

V&V Reference Report

L2 ASCDS Version : 8.4.5

Observation 930 - L2 Version 4
Chandra X-Ray Center

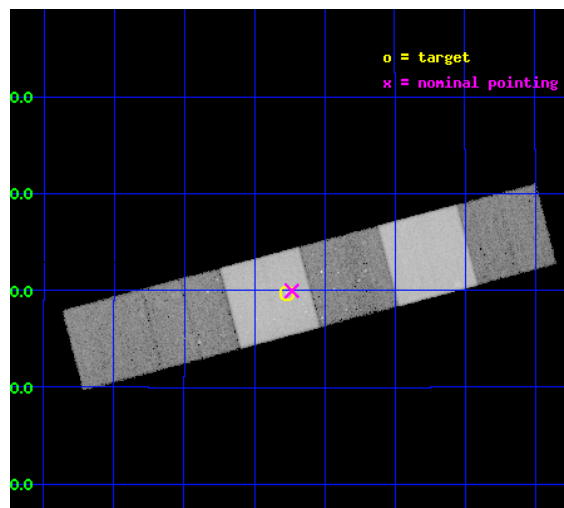
L2 Processing Date : Aug 25 2012

Contents

1	Front	2
2	OBI	3
2.1	OBI	3
2.1.1	Images	3
2.1.2	Bias	3
2.1.3	Parameters	4
2.1.4	Events	4
2.2	Compared Parameters	5
2.3	Aspect	6
2.4	Star Slots	9
2.4.1	Slot 3	9
2.4.2	Slot 4	10
2.4.3	Slot 5	11
2.4.4	Slot 6	12
2.4.5	Slot 7	13
2.5	FID Slots	14
2.5.1	Slot 0	14
2.5.2	Slot 1	15
2.5.3	Slot 2	16
A	Summary	17
A.1	Status	17
A.2	Comments	17

1 Front

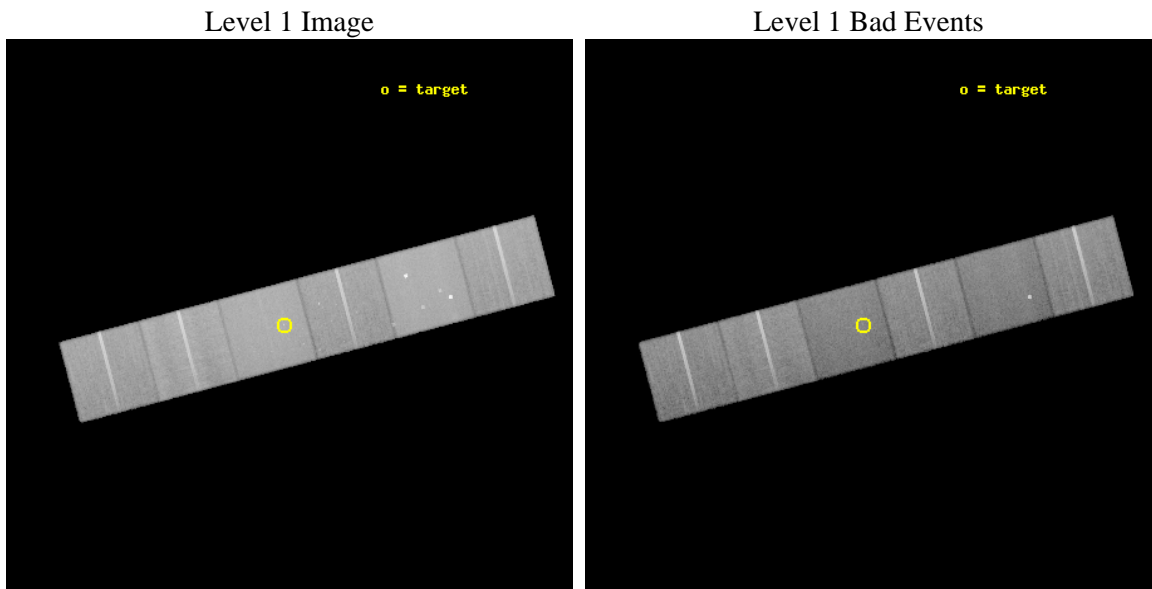
seq_num	800106	Sequence number
obs_id	930	Observation id
title	X-RAY SEARCH FOR DARK GRAVITATIONAL LENSES	Proposal title
observer	Dr. Makoto Hattori	Principal investigator
object	H1413+117	Source name
dtycycle	0	
cycle	P	events from which exps? Prim/Second/Both
ra_targ	213.9425	Observer's specified target RA [deg]
dec_targ	11.495222	Observer's specified target Dec [deg]
ra_nom	213.93325517907	Nominal RA [deg]
dec_nom	11.499542529936	Nominal Dec [deg]
roll_nom	165.15448313094	Nominal Roll [deg]
revision	4	Processing version of data
ontime	38673.824028149	Sum of GTIs [s]
livetime	38184.112781724	Livetime [s]
ontime4	38664.142137527	Sum of GTIs [s]
ontime5	38673.782988146	Sum of GTIs [s]
ontime6	38673.741948158	Sum of GTIs [s]
ontime7	38673.824028149	Sum of GTIs [s]
ontime8	38670.459928006	Sum of GTIs [s]
ontime9	38667.178067297	Sum of GTIs [s]
l2events	464136	Number of level 2 events



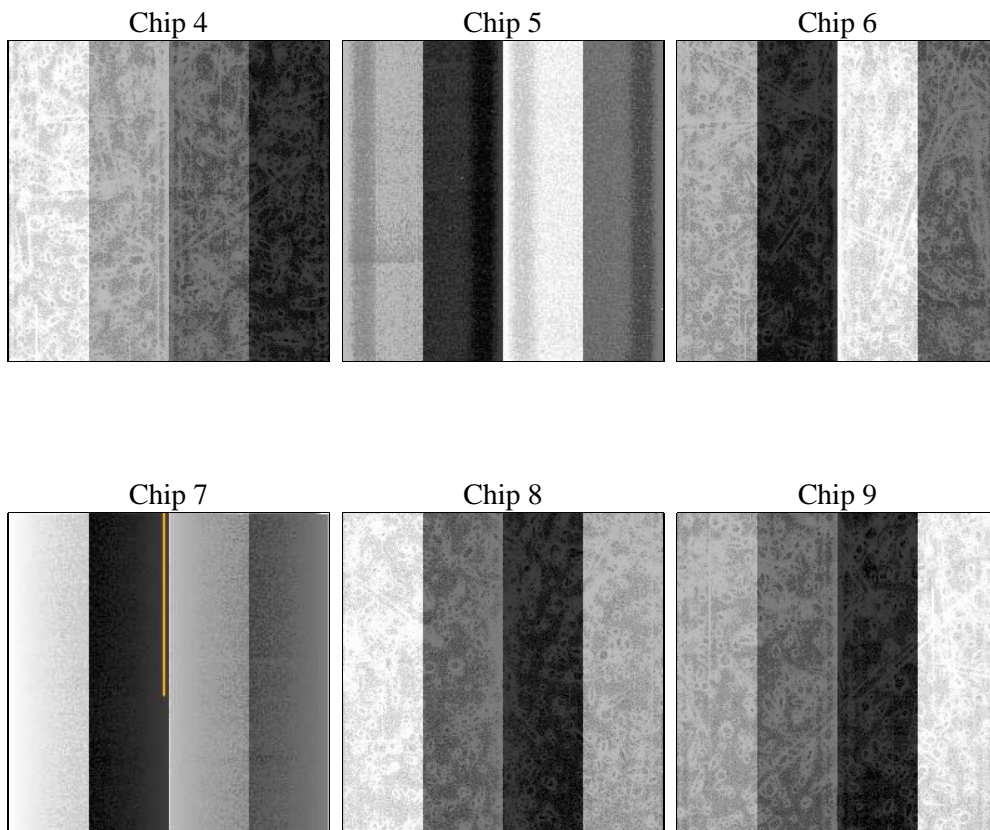
2 OBI

2.1 OBI

2.1.1 Images



2.1.2 Bias



2.1.3 Parameters

obi_num	0	Obi number	sched_exp_time	38500.000000	[s] Scheduled observation exposure time
ascdsver	8.4.5	Processing system revision	ontime	38673.824028149	Sum of GTIs [s]
caldbver	4.5.1.1	 	ontime4	38664.142137527	Sum of GTIs [s]
date	2012-08-25T21:59:01	Date and time of file creation	ontime5	38673.782988146	Sum of GTIs [s]
revision	4	Processing version of data	ontime6	38673.741948158	Sum of GTIs [s]
			ontime7	38673.824028149	Sum of GTIs [s]
			ontime8	38670.459928006	Sum of GTIs [s]
			ontime9	38667.178067297	Sum of GTIs [s]
			l1events	1979223	Number of level 1 events

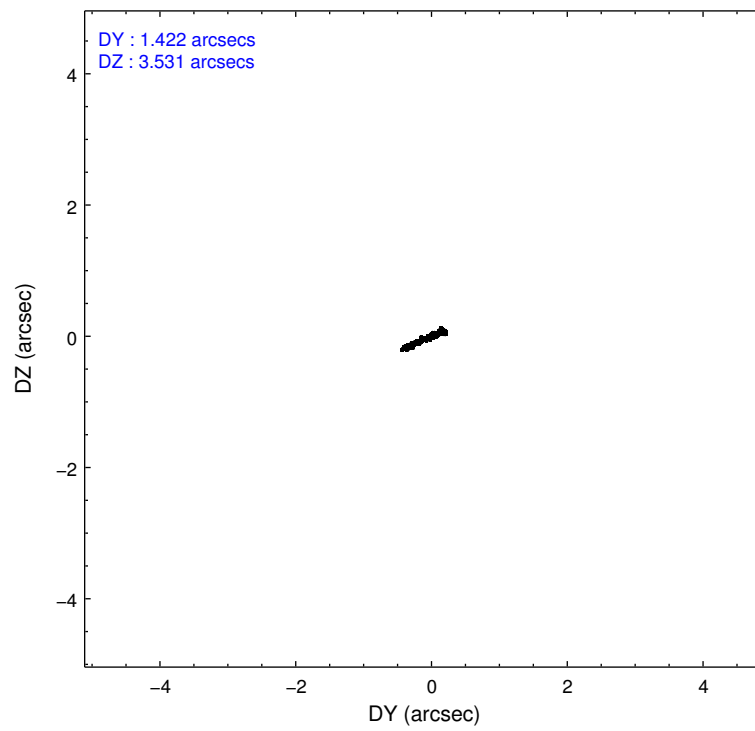
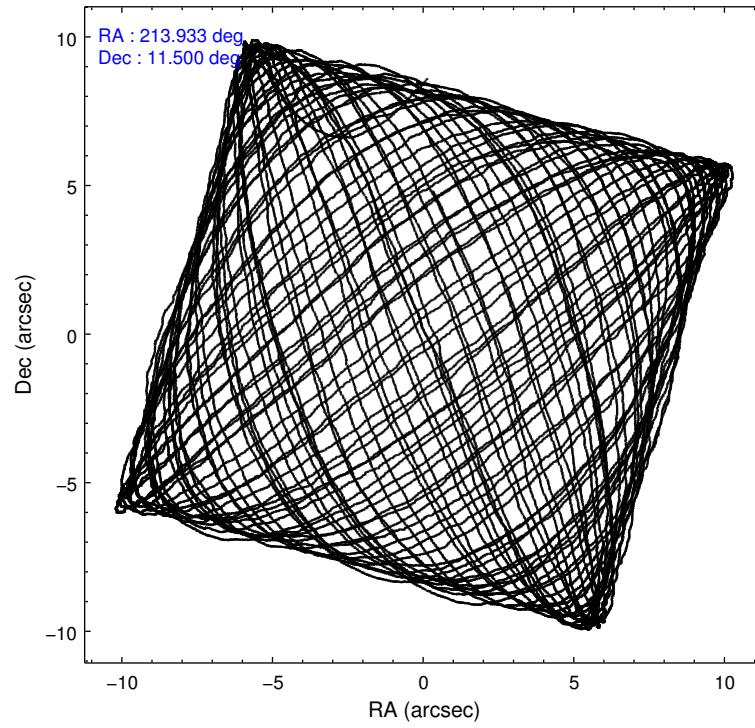
2.1.4 Events

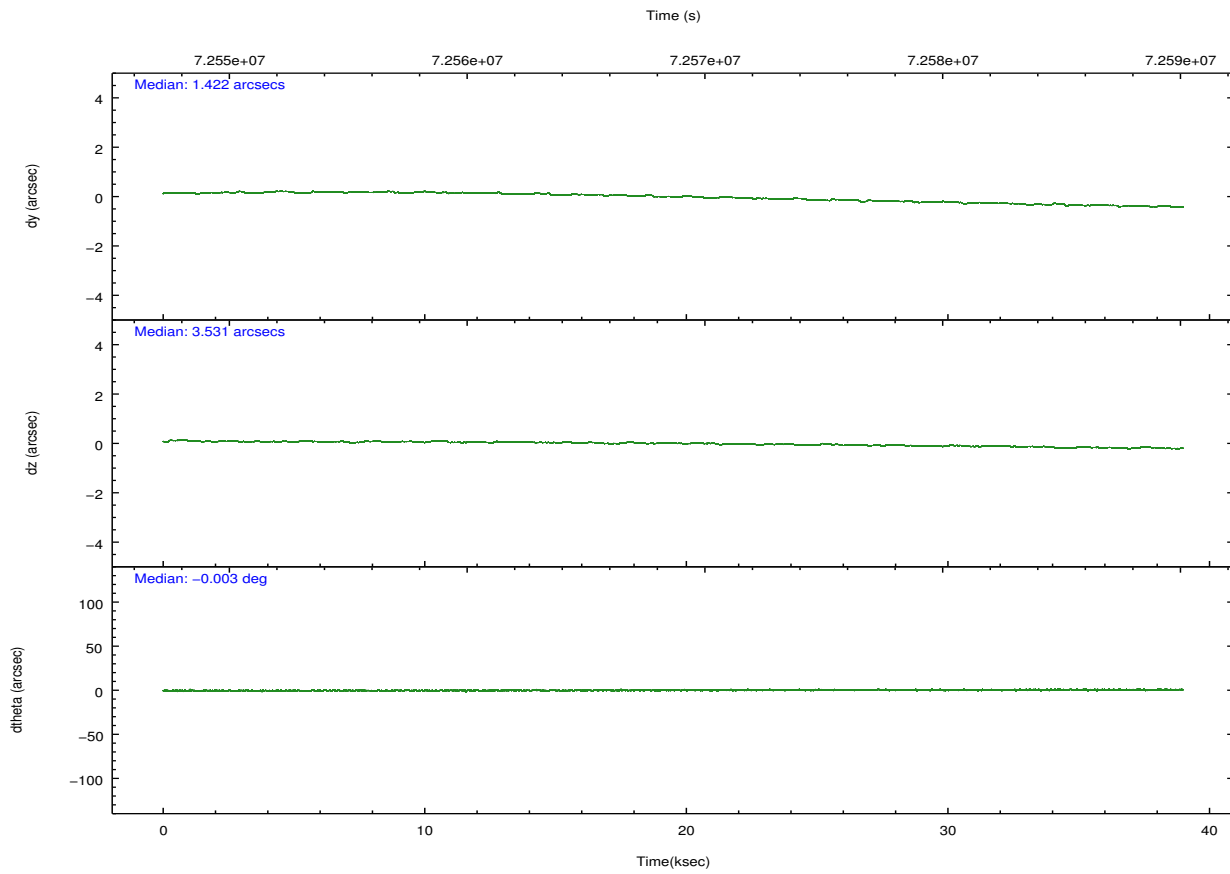
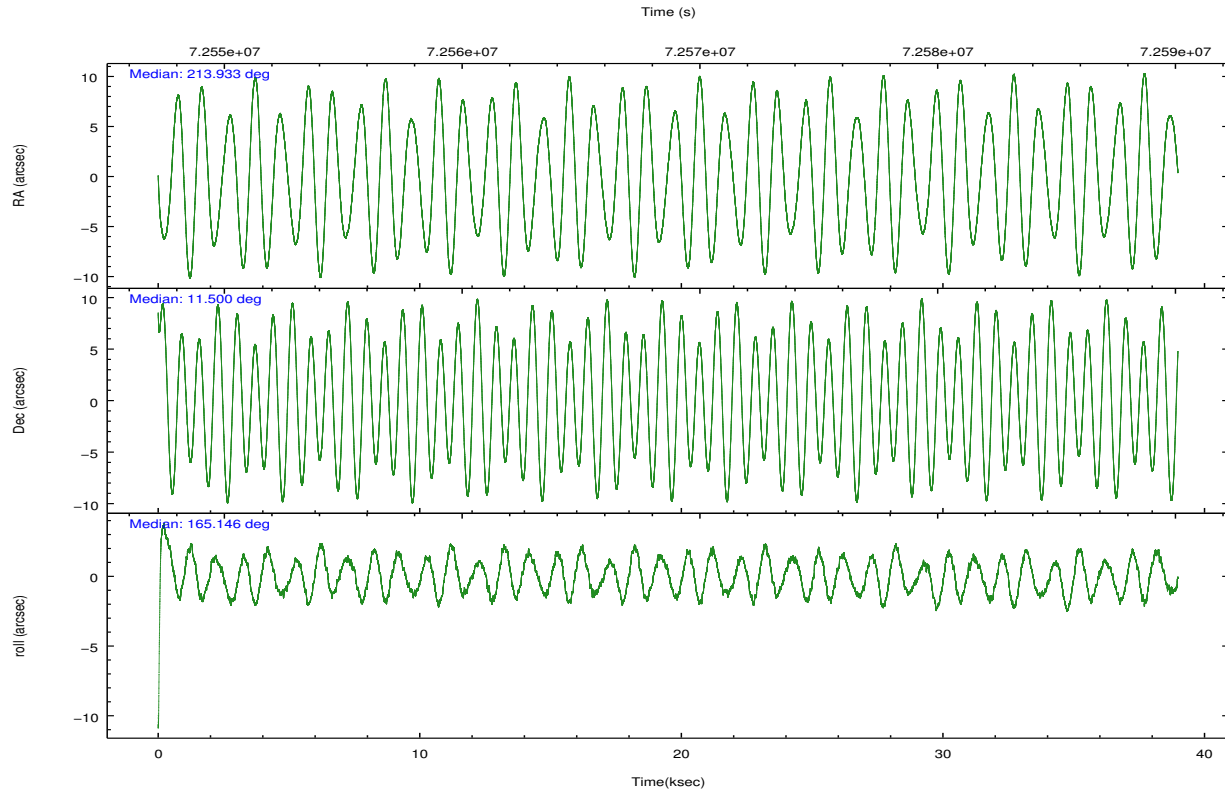
	ccd 4	ccd 5	ccd 6	ccd 7	ccd 8	ccd 9		ccd 4	ccd 5	ccd 6	ccd 7	ccd 8	ccd 9
level 1 events	313917	396825	286296	357378	350166	274641	grade 0 events	14250	29908	15669	19530	22761	14445
rejected events	281522	194825	252685	187417	283557	242564		4%	7%	5%	5%	6%	5%
rejected %	89%	49%	88%	52%	80%	88%	grade 1 events	150	441	132	291	193	110
								0%	0%	0%	0%	0%	0%
							grade 2 events	7278	58879	6055	33349	14107	6021
								2%	14%	2%	9%	4%	2%
							grade 3 events	2884	9397	3222	15600	6859	3112
								0%	2%	1%	4%	1%	1%
							grade 4 events	2818	9149	3044	15319	6300	2918
								0%	2%	1%	4%	1%	1%
							grade 5 events	8577	27520	10282	30977	13079	10478
								2%	6%	3%	8%	3%	3%
							grade 6 events	5170	94682	5624	86173	16585	5586
								1%	23%	1%	24%	4%	2%
							grade 7 events	272790	166849	242268	156139	270282	231971
								86%	42%	84%	43%	77%	84%

2.2 Compared Parameters

Parameter	Planned	Actual	Parameter	Planned	Actual
Instrument	ACIS	ACIS	Obspar format version number	7	7
Detector	ACIS-456789	ACIS-456789	Obspar file type	PREDICTED	ACTUAL
Grating	NONE	NONE	Obspar update status	NONE	UPDATED
Data mode	VFAINT	VFAINT	Number of optional ACIS chips dropped	0	0
Observation mode	POINTING	POINTING	On-chip summing requested	N	N
[deg] Pointing RA	213.960274	213.9332551790668	Subarray requested	NONE	NONE
[deg] Pointing Dec	11.506778	11.49954252993562	Alternating exposures requested	N	N
[deg] Pointing Roll	164.992467	165.1544831309387	[s] Primary exposure time	0.000000	3.2
[mm] SIM focus pos	-0.684267	-0.6828225247311905			
[mm] SIM defocus	0	0.001444936568705701			
[mm] SIM translation stage pos	-190.132523	-190.1425803651734			
[mm] SIM translation stage offset	0	0.01005778216563158			
[s] Observation start time (MET)	72549651.184000	72548415.94746201			
Observation start date	2000-04-19T16:39:47	2000-04-19T16:20:15			
[s] Observation end time (MET)	72588151.184000	72588845.023945			
Observation end date	2000-04-20T03:21:27	2000-04-20T03:34:05			
Read mode	TIMED	TIMED			

2.3 Aspect





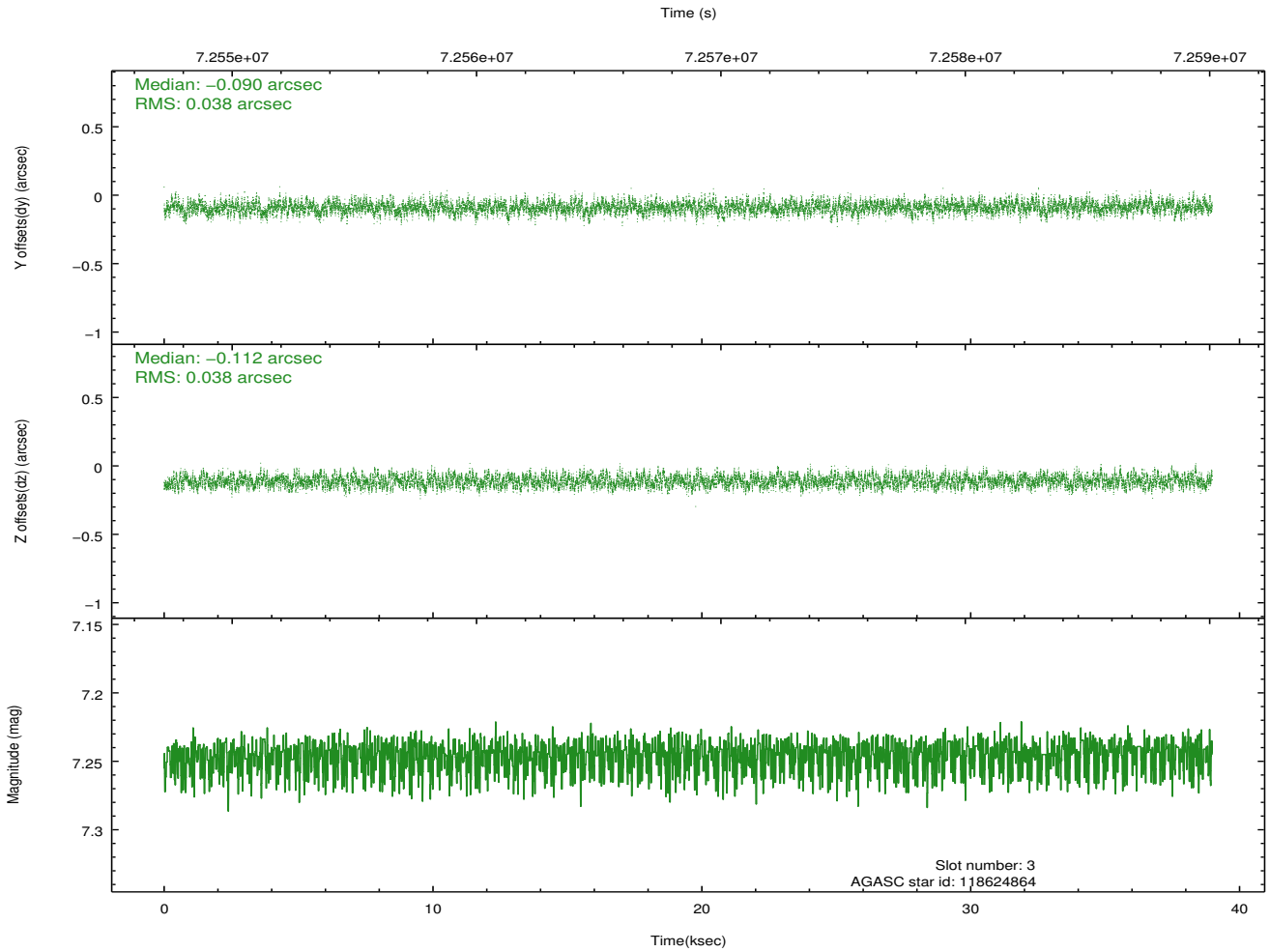
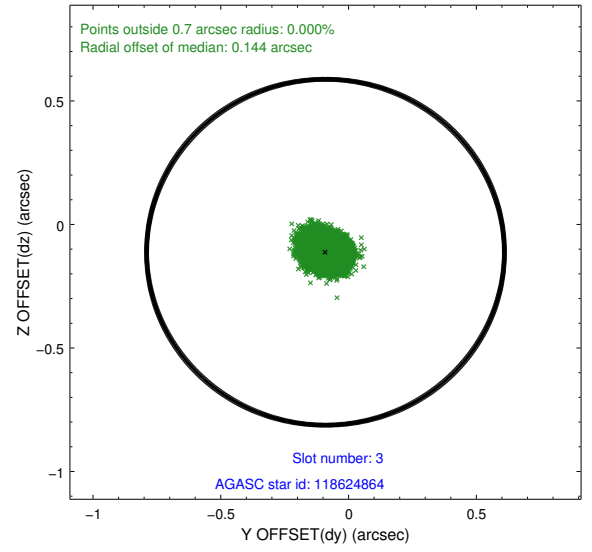
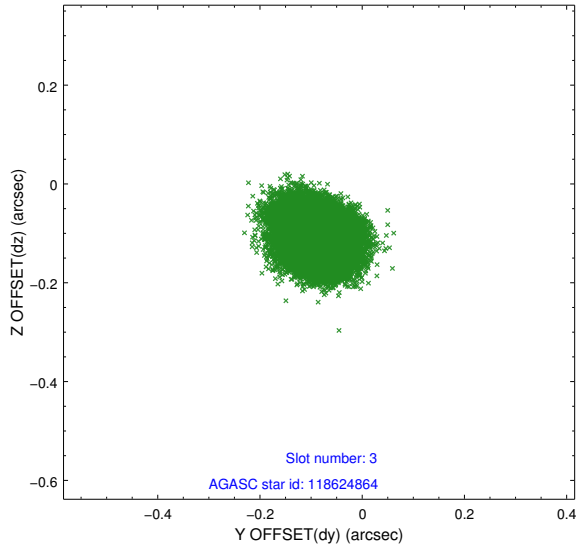
Slot Statistics

slot	status	id	mag	n_pts	med_dy	med_dz	dr1	dr2	ra	dec	mean_y	mean_z
0	FID	ACIS-S-2	7.11	9509	-0.005	-0.016	0.007	0.011	0.000000	0.000000	-754.03	-1724.52
1	FID	ACIS-S-4	7.21	9509	-0.006	0.007	0.006	0.010	0.000000	0.000000	2159.29	183.89
2	FID	ACIS-S-5	7.23	9509	-0.021	0.018	0.006	0.011	0.000000	0.000000	-1806.81	177.69
3	GUIDE	118624864	7.25	19018	-0.090	-0.112	0.058	0.091	214.403642	11.335239	-1671.22	189.93
4	GUIDE	118628296	8.57	19011	0.141	0.070	0.059	0.097	213.196147	11.063615	2195.39	2237.32
5	GUIDE	118626824	9.27	19006	-0.086	0.105	0.073	0.120	213.749334	12.111955	1281.83	-1911.74
6	GUIDE	118628136	8.81	19010	0.006	-0.020	0.061	0.101	213.887181	11.834140	554.27	-1071.49
7	GUIDE	118626032	9.74	19006	0.025	-0.042	0.105	0.172	214.111327	10.931412	-1052.16	1862.26

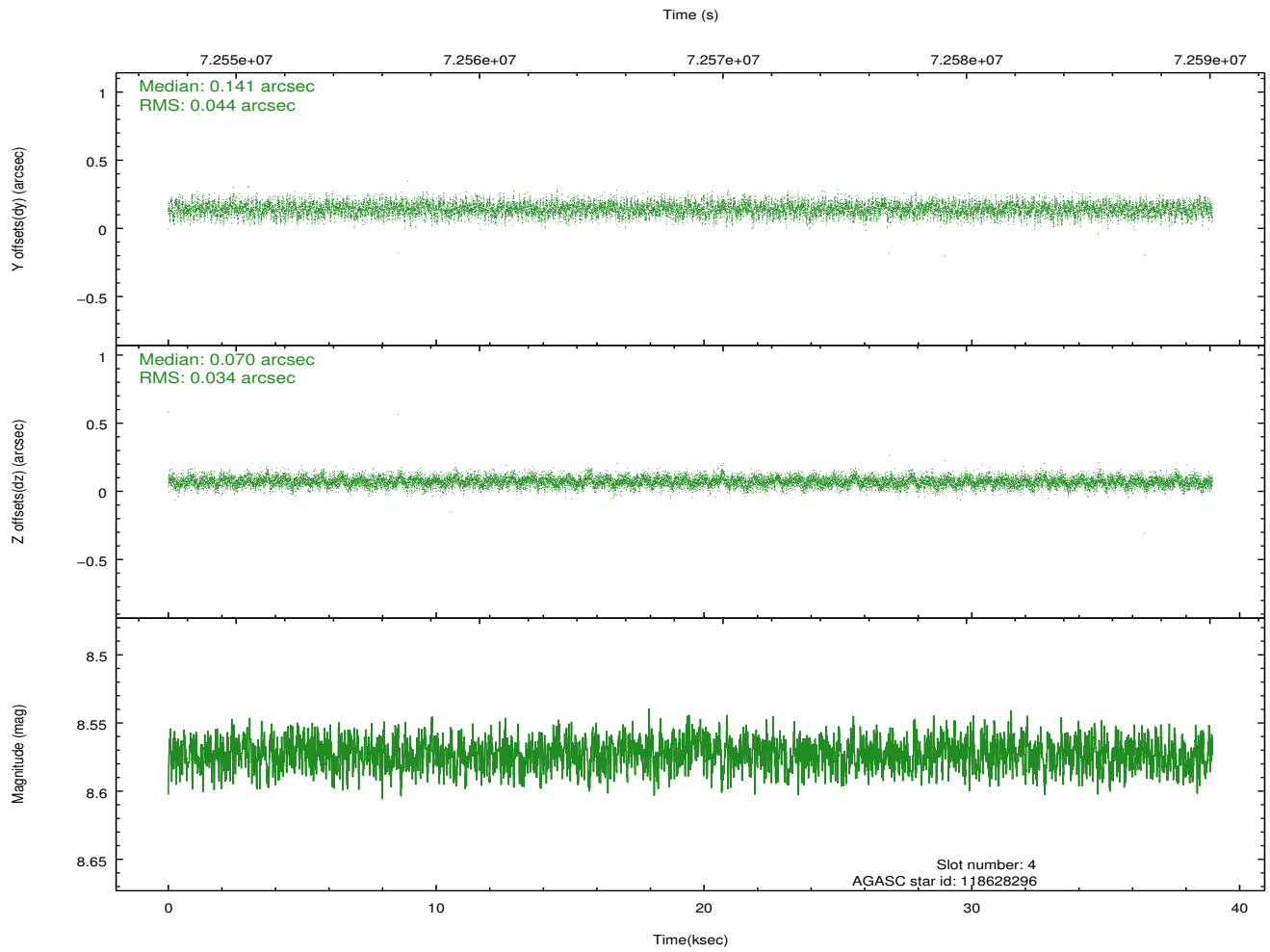
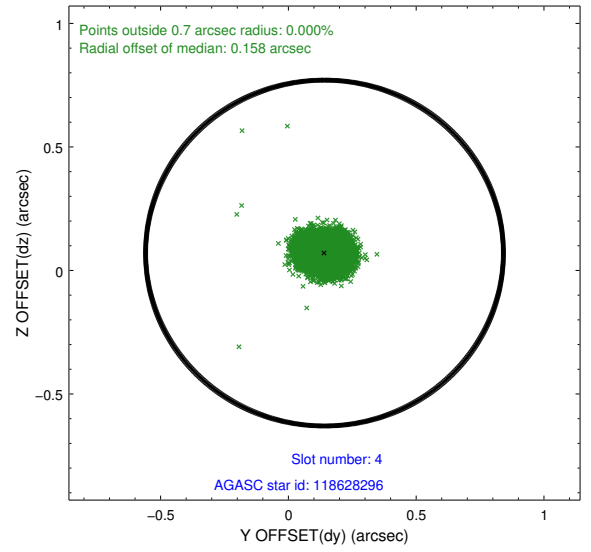
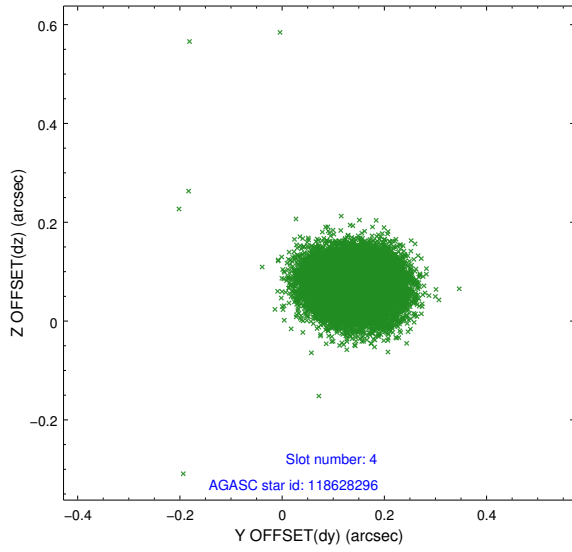
∞

2.4 Star Slots

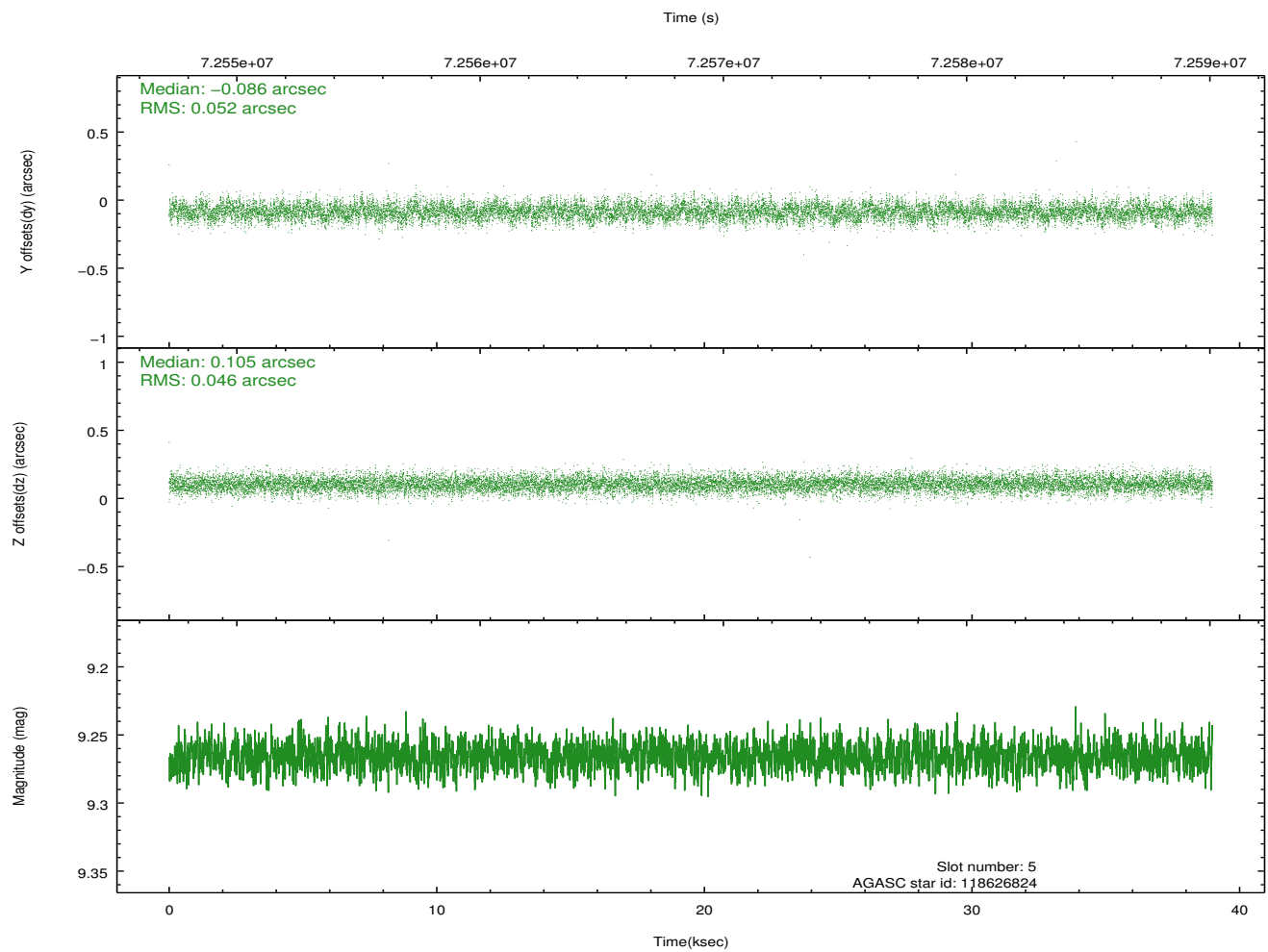
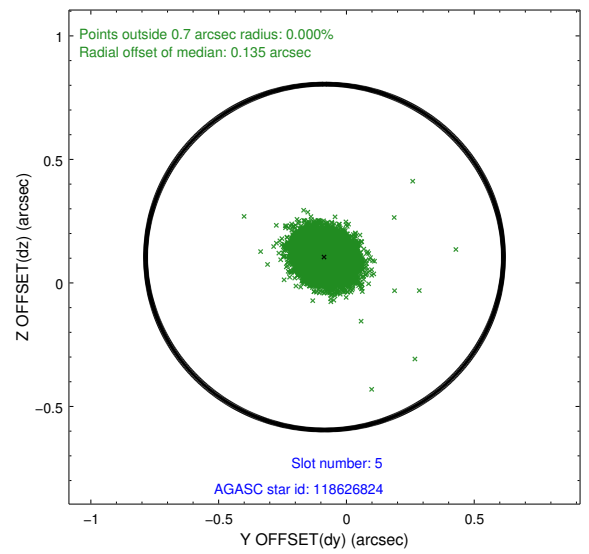
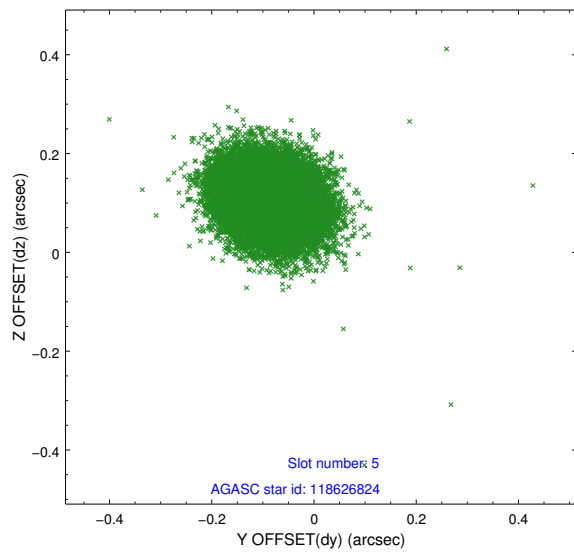
2.4.1 Slot 3



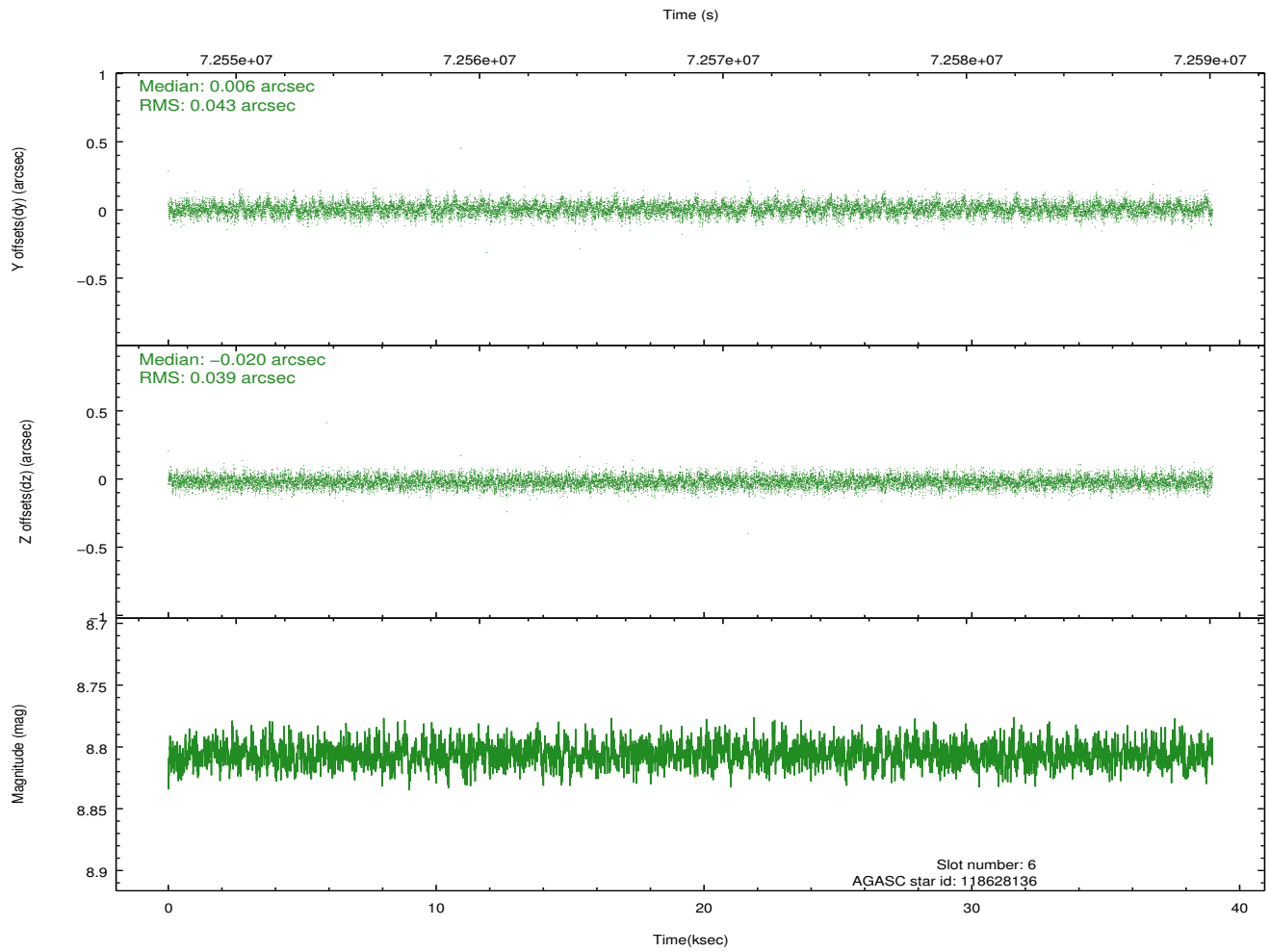
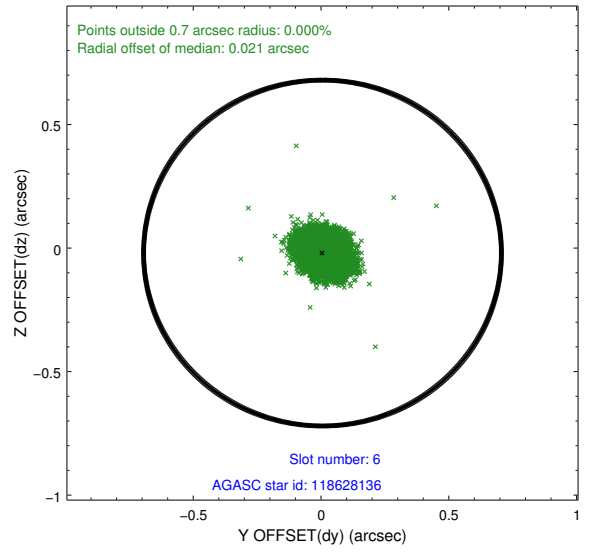
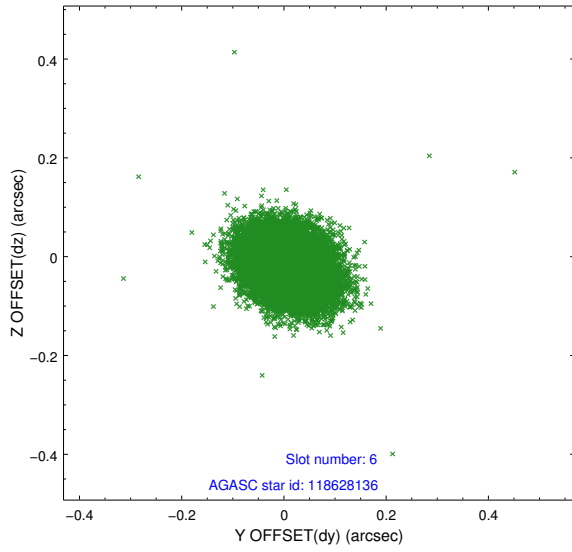
2.4.2 Slot 4



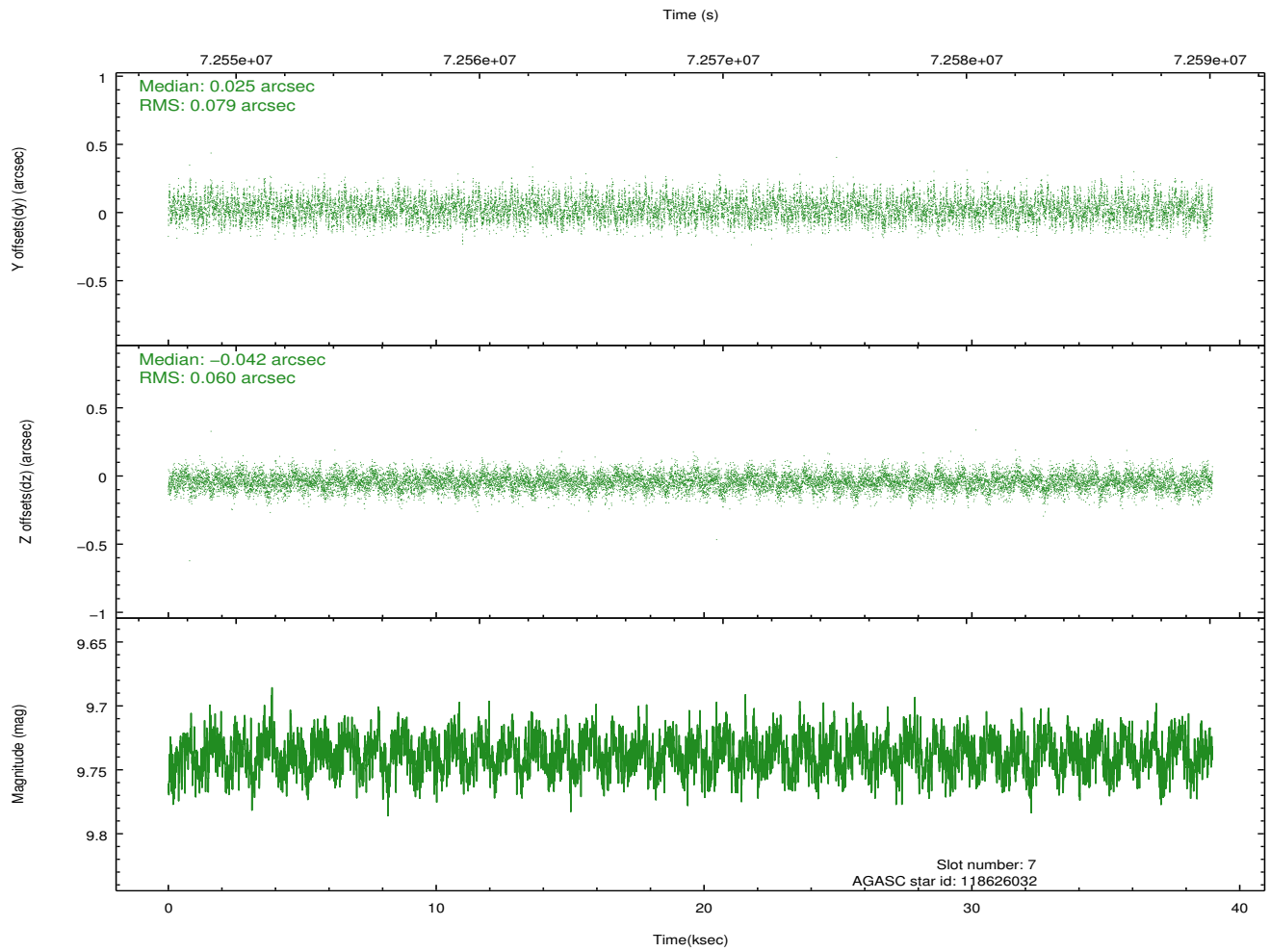
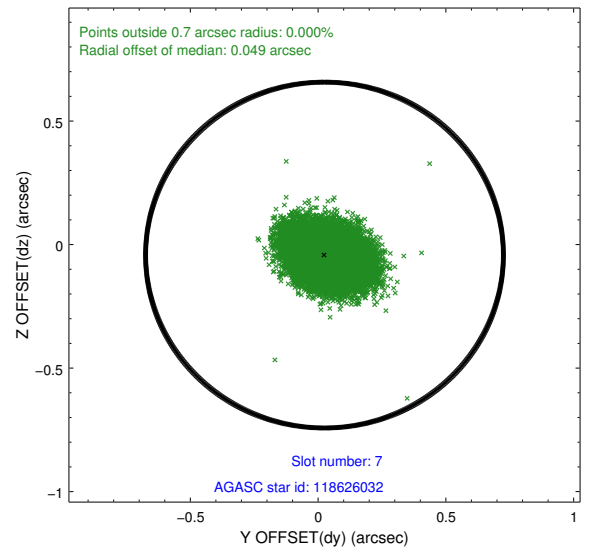
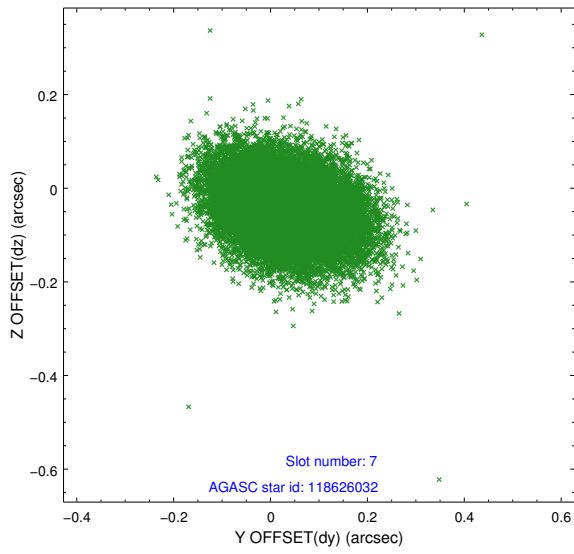
2.4.3 Slot 5



2.4.4 Slot 6

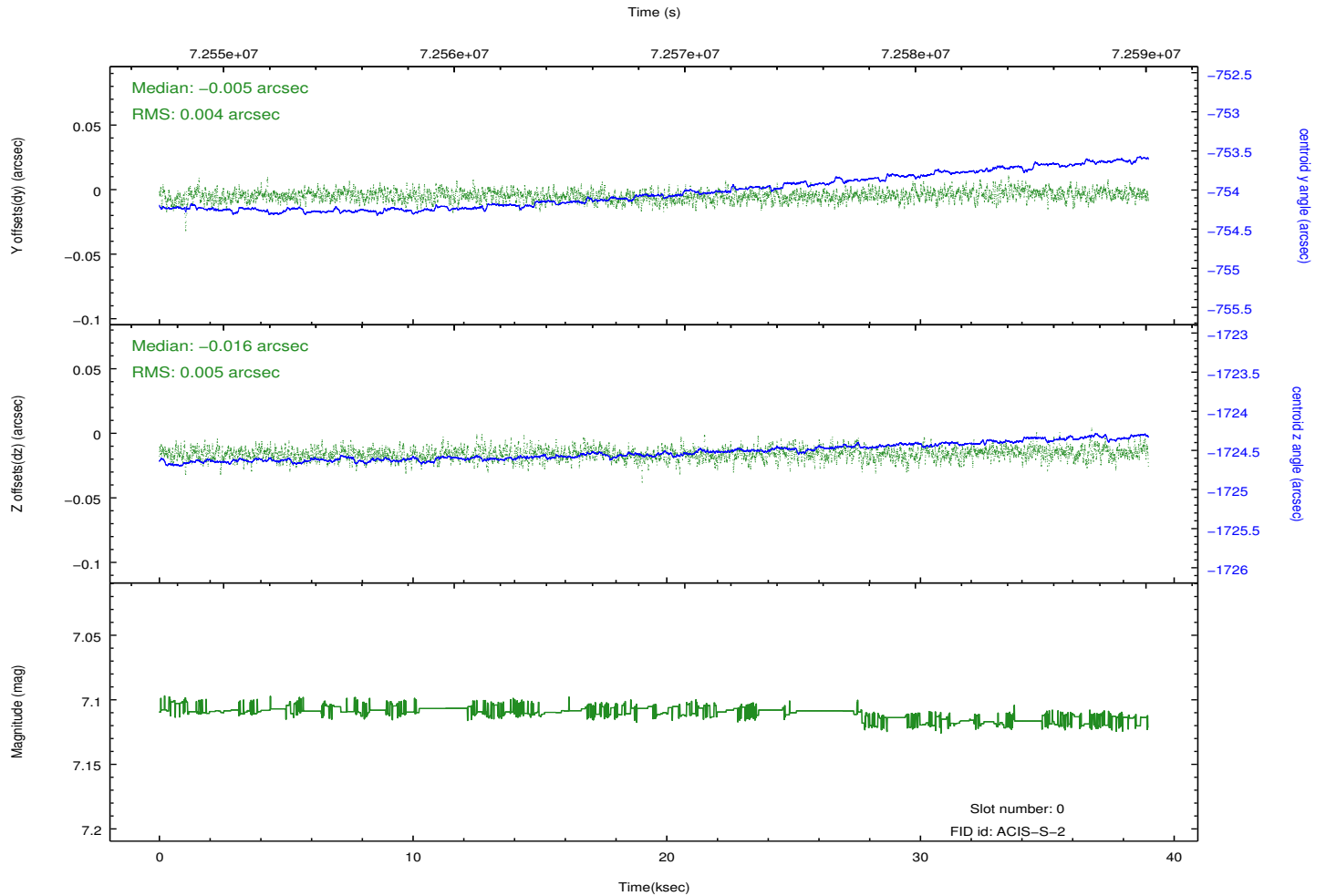
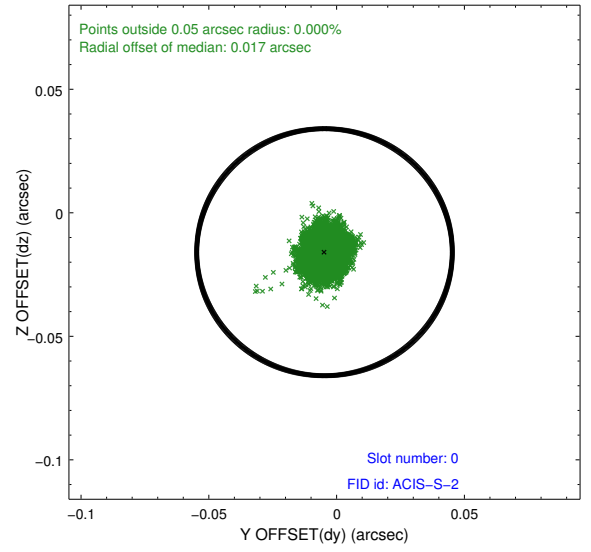
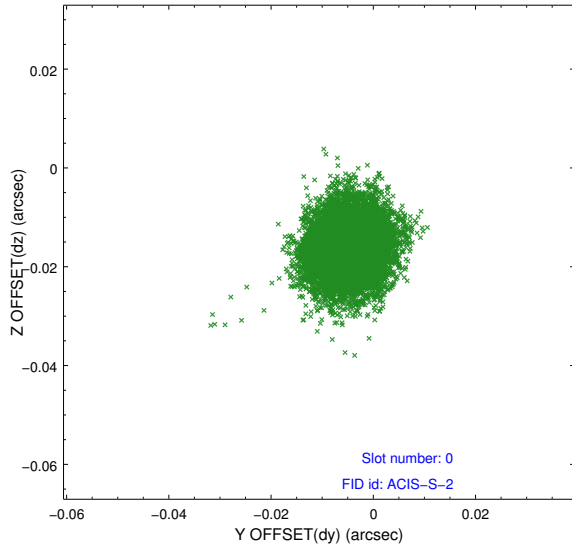


2.4.5 Slot 7

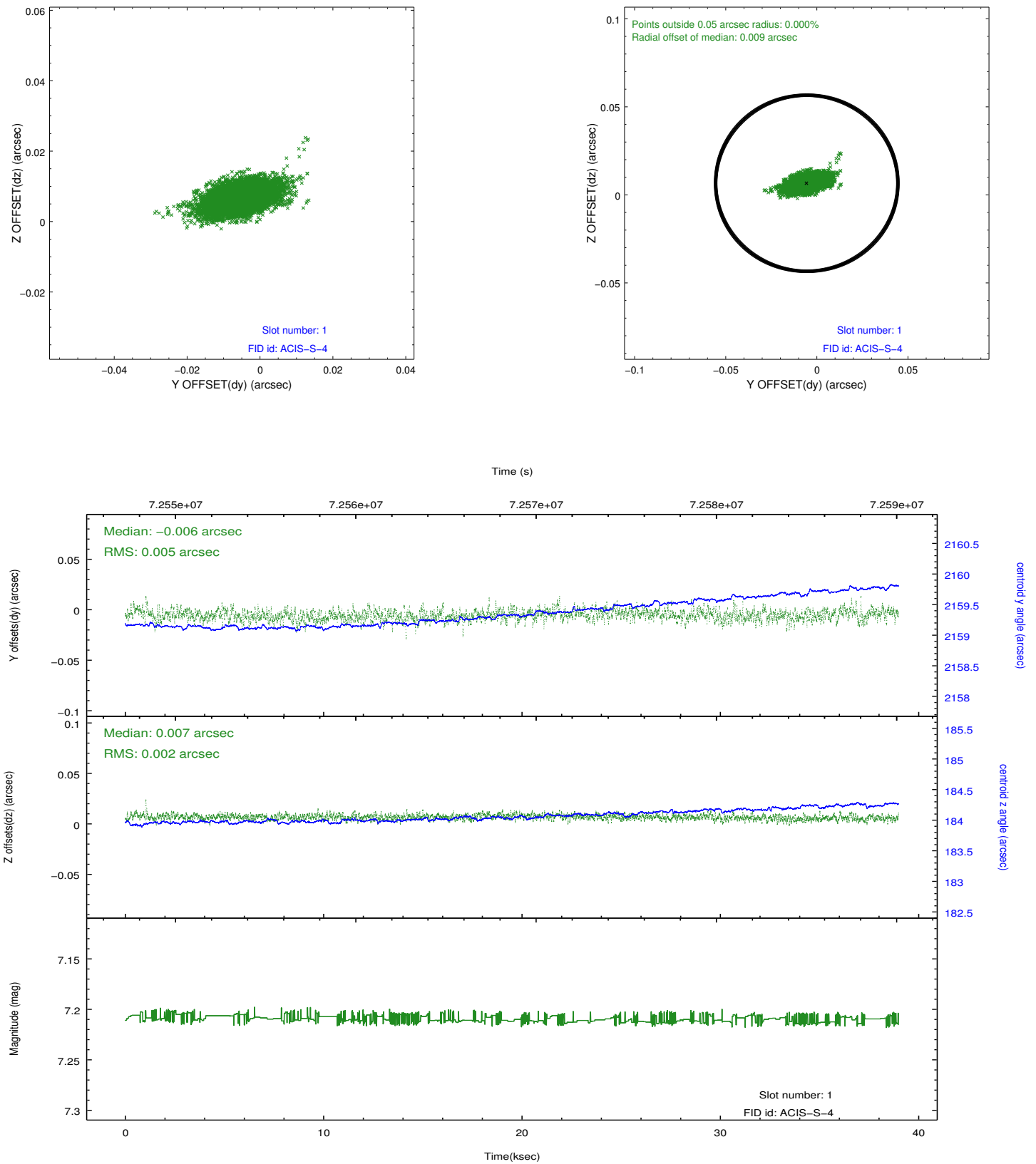


2.5 FID Slots

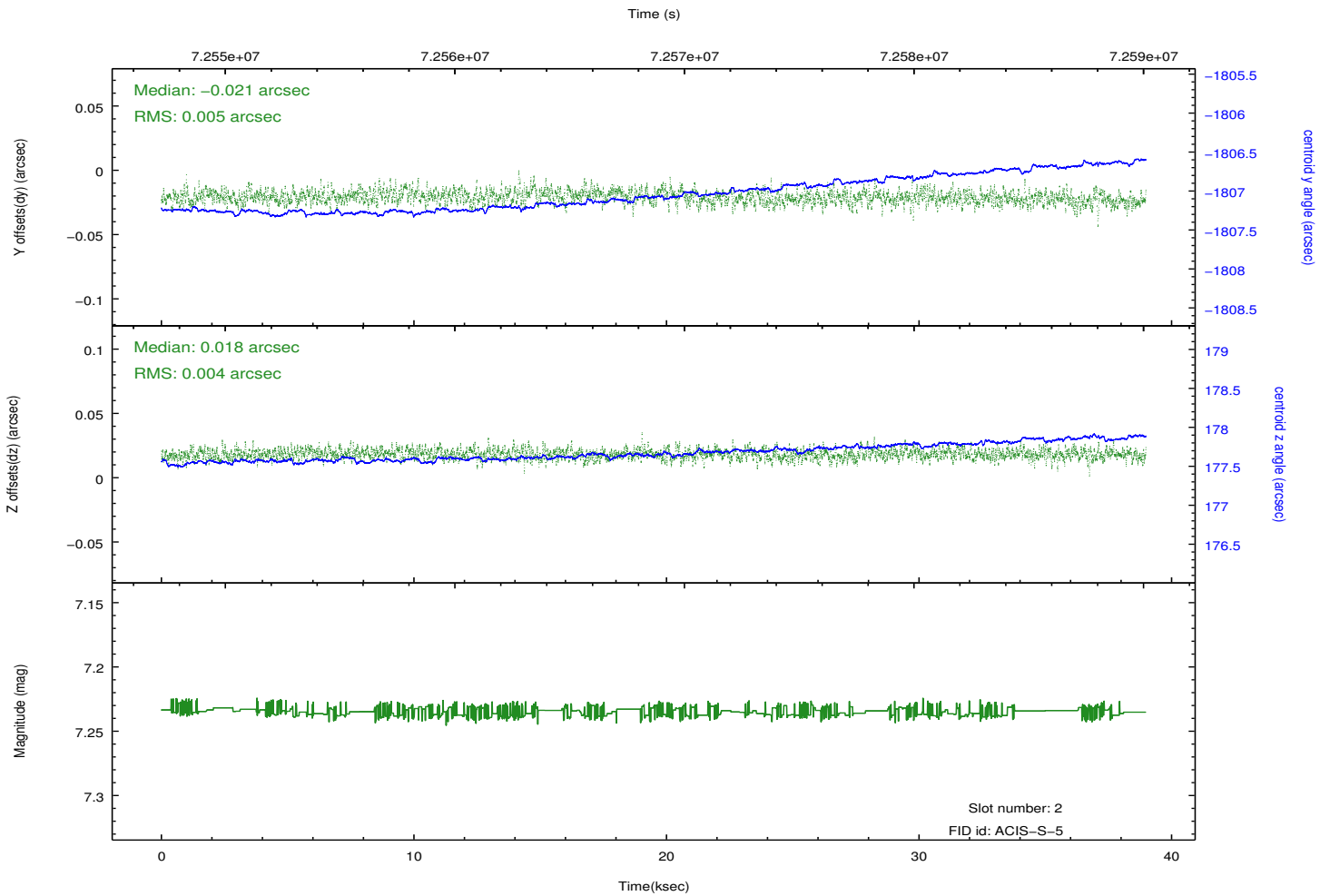
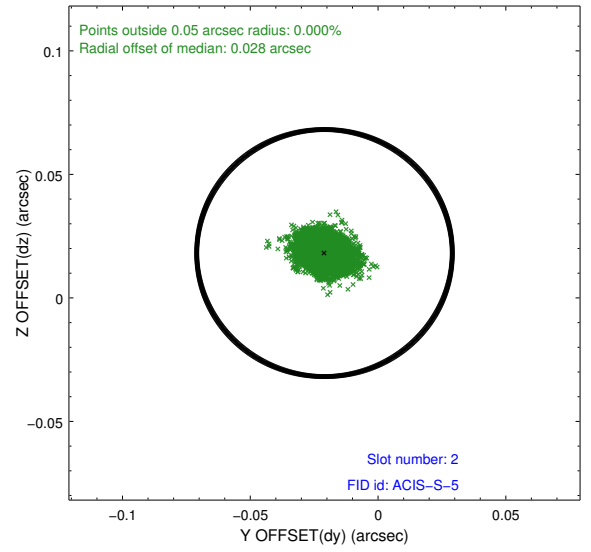
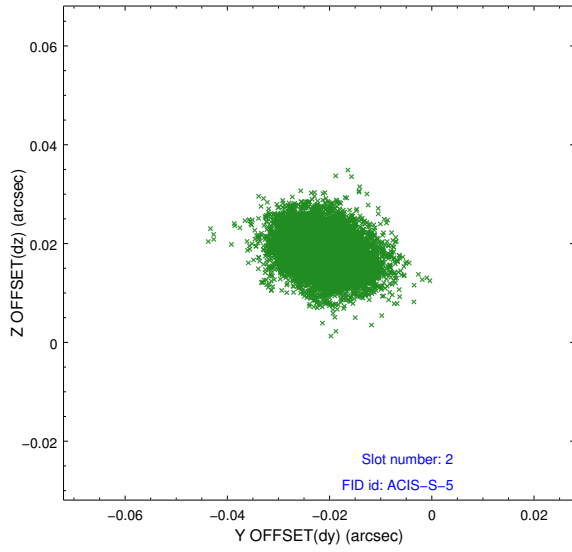
2.5.1 Slot 0



2.5.2 Slot 1



2.5.3 Slot 2



A Summary

A.1 Status

V&V Scientist	Jen Lauer
V&V Date (YYYY-MM-DD)	2012.08.29
V&V Edition	1
V&V Disposition and Status	OK
V&V Charge Time	38.675

A.2 Comments