

V&V Reference Report

L2 ASCDS Version : 8.4.4

Observation 9760 - L2 Version 2
Chandra X-Ray Center

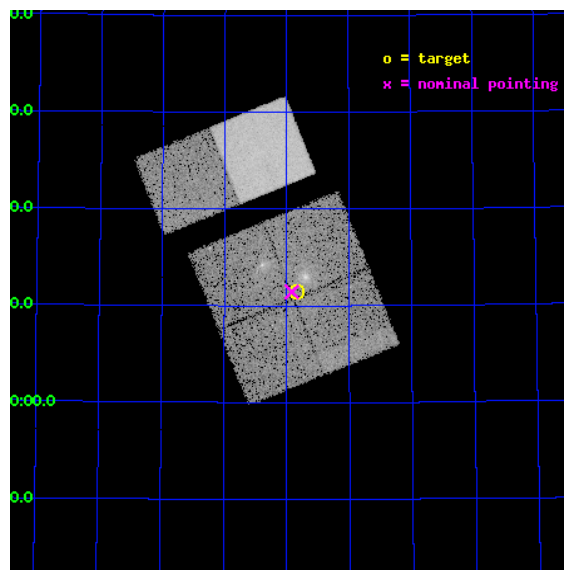
L2 Processing Date : May 4 2012

Contents

1	Front	2
2	OBI	3
2.1	OBI	3
2.1.1	Images	3
2.1.2	Bias	3
2.1.3	Parameters	4
2.1.4	Events	4
2.2	Compared Parameters	5
2.3	Aspect	6
2.4	Star Slots	9
2.4.1	Slot 3	9
2.4.2	Slot 4	10
2.4.3	Slot 5	11
2.4.4	Slot 6	12
2.4.5	Slot 7	13
2.5	FID Slots	14
2.5.1	Slot 0	14
2.5.2	Slot 1	15
2.5.3	Slot 2	16
A	Summary	17
A.1	Status	17
A.2	Comments	17

1 Front

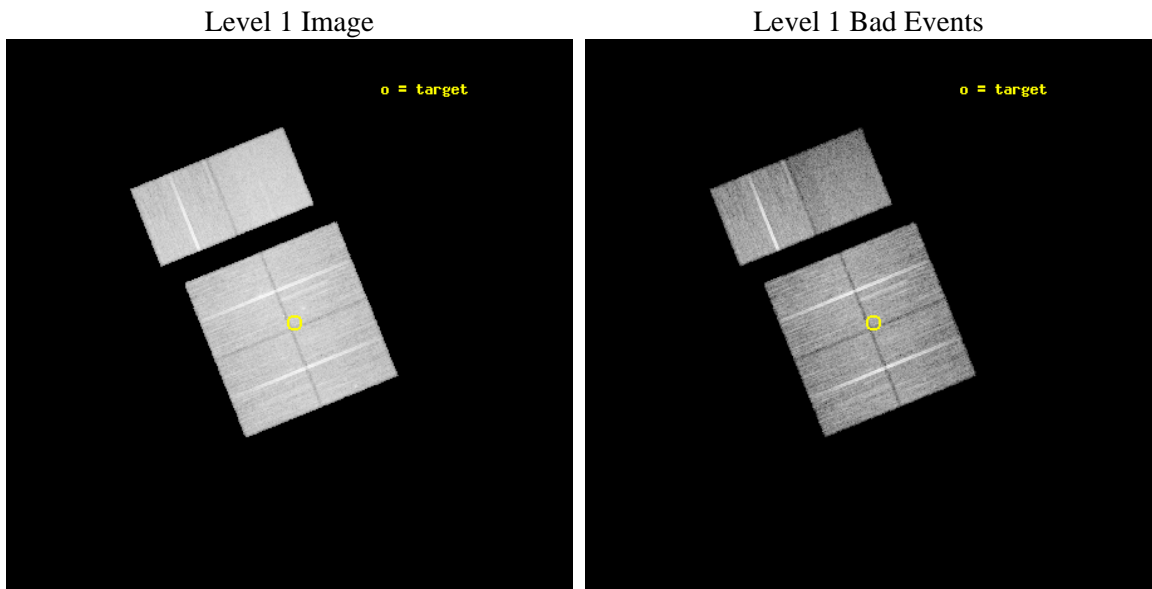
seq_num	900576	Sequence number
obs_id	9760	Observation id
title	AGN in the Cosmic Web: A Proto-Cluster at z=2.3	Proposal title
observer	Prof Kirpal Nandra	Principal investigator
object	HS 1700+643	Source name
dtcycle	0	
cycle	P	events from which exps? Prim/Second/Both
ra_targ	255.210833	Observer's specified target RA [deg]
dec_targ	64.191417	Observer's specified target Dec [deg]
ra_nom	255.22942467296	Nominal RA [deg]
dec_nom	64.190747156999	Nominal Dec [deg]
roll_nom	337.99193014955	Nominal Roll [deg]
revision	2	Processing version of data
ontime	17167.999936104	Sum of GTIs [s]
livetime	16950.608383584	Livetime [s]
ontime0	17167.999936104	Sum of GTIs [s]
ontime1	17167.999936104	Sum of GTIs [s]
ontime2	17164.758945882	Sum of GTIs [s]
ontime3	17167.999936104	Sum of GTIs [s]
ontime6	17164.758975863	Sum of GTIs [s]
ontime7	17167.999936104	Sum of GTIs [s]
l2events	130264	Number of level 2 events



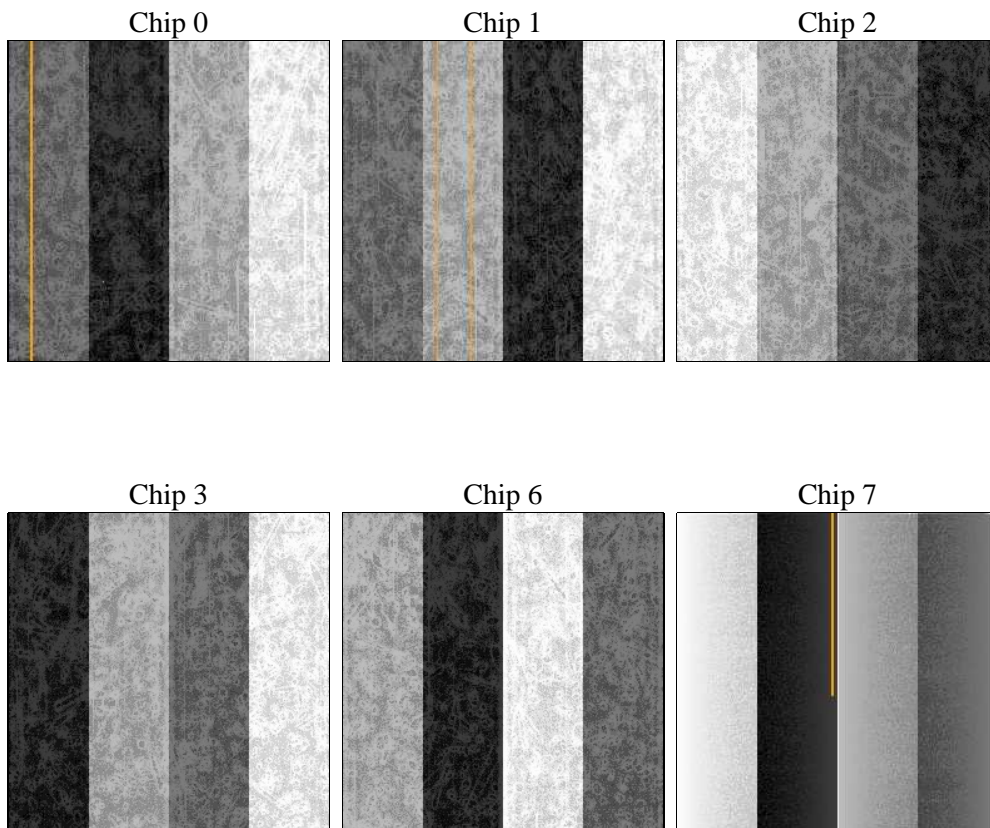
2 OBI

2.1 OBI

2.1.1 Images



2.1.2 Bias



2.1.3 Parameters

obi_num	0	Obi number	sched_exp_time	17127.597000	[s] Scheduled observation exposure time
ascdsver	8.4.4	Processing system revision	ontime	17167.999936104	Sum of GTIs [s]
caldsver	4.4.9	 	ontime0	17167.999936104	Sum of GTIs [s]
date	2012-05-04T15:04:51	Date and time of file creation	ontime1	17167.999936104	Sum of GTIs [s]
revision	2	Processing version of data	ontime2	17164.758945882	Sum of GTIs [s]
			ontime3	17167.999936104	Sum of GTIs [s]
			ontime6	17164.758975863	Sum of GTIs [s]
			ontime7	17167.999936104	Sum of GTIs [s]
			l1events	839386	Number of level 1 events

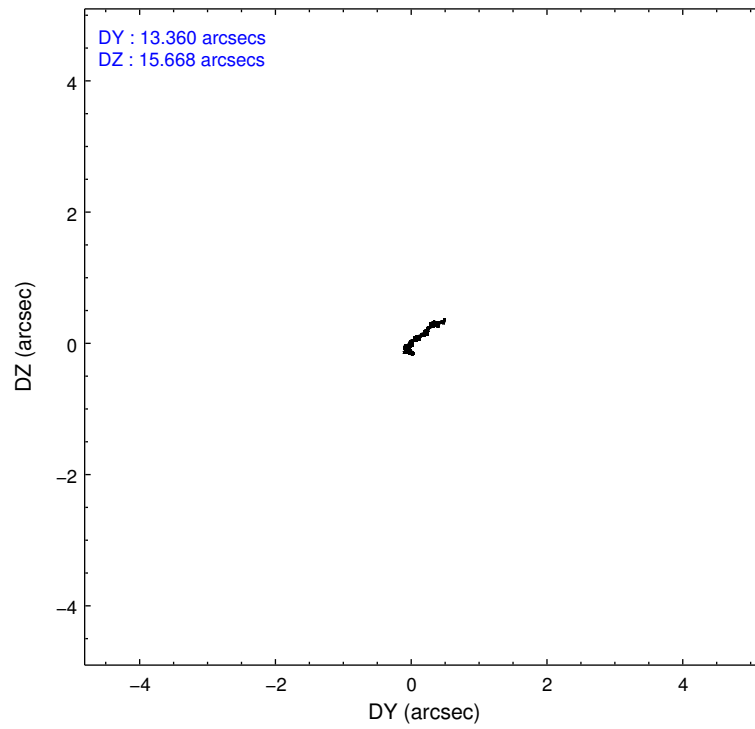
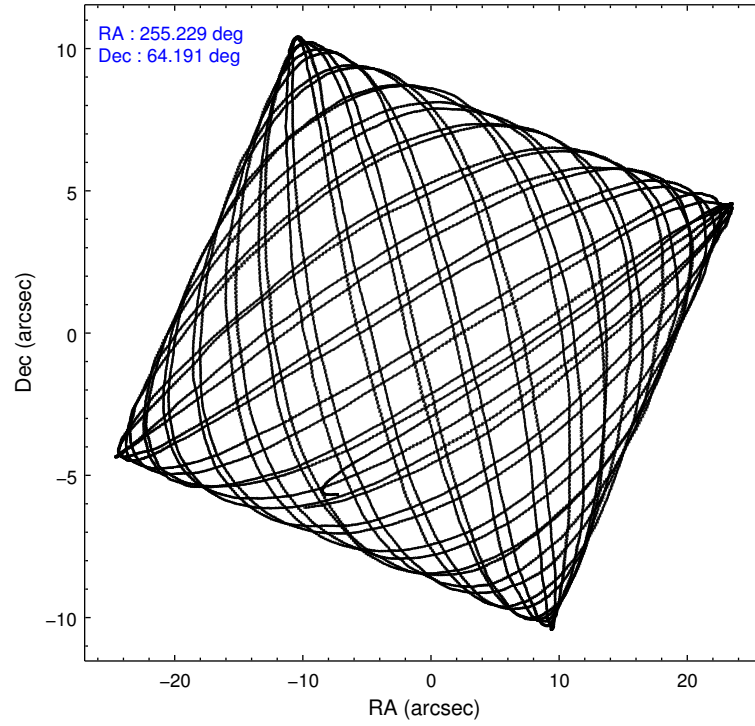
2.1.4 Events

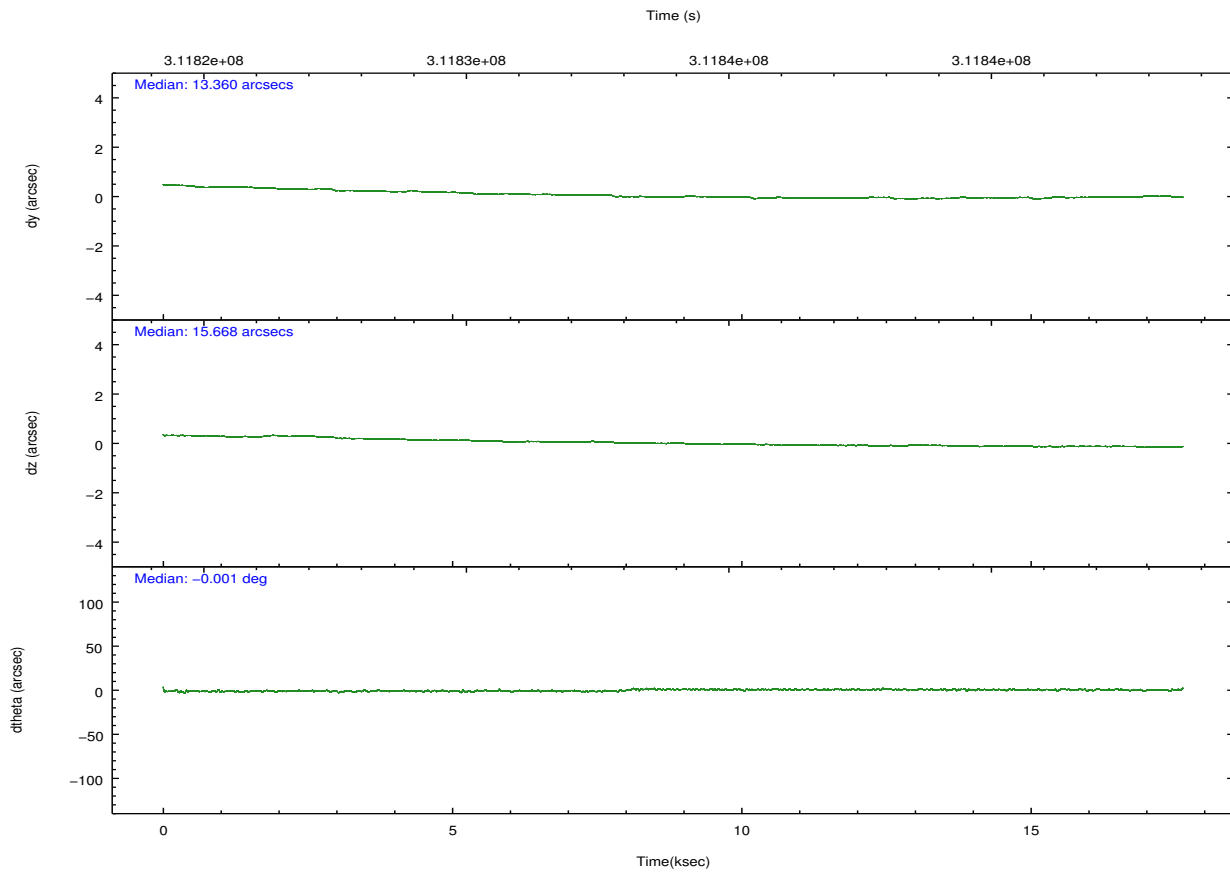
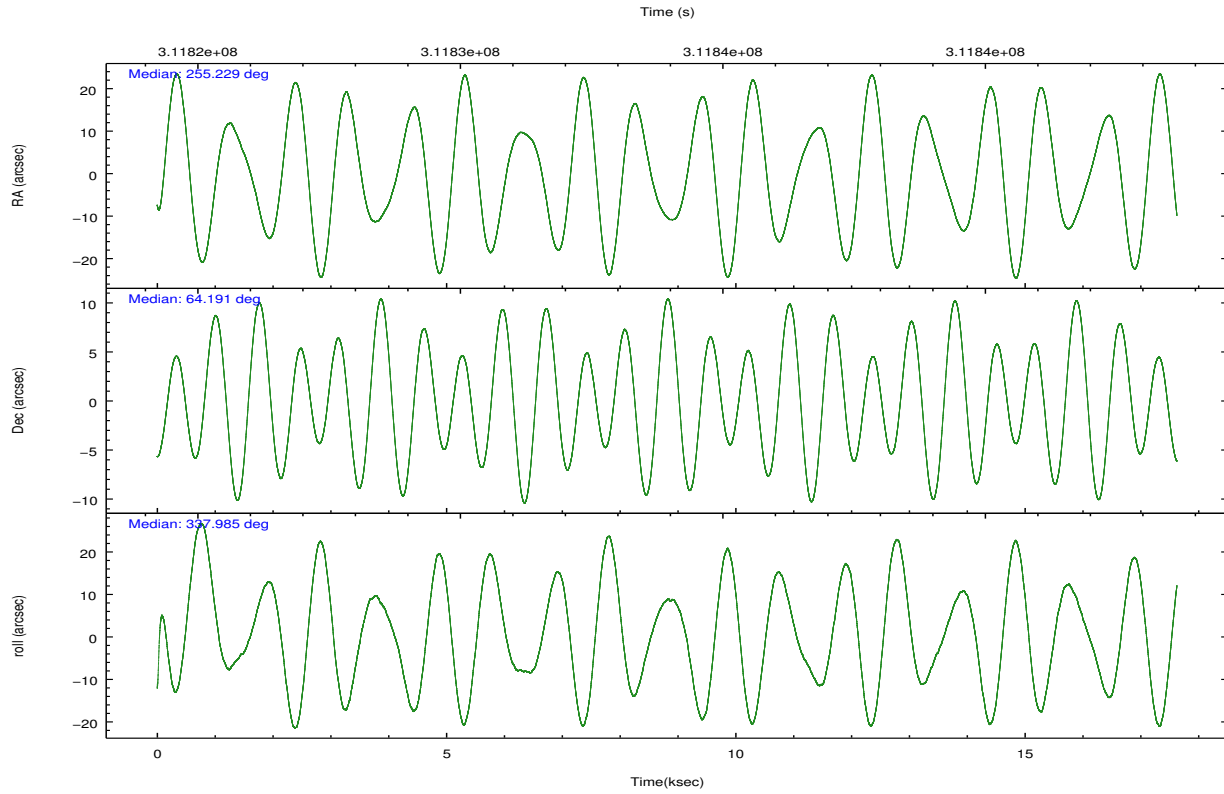
	ccd 0	ccd 1	ccd 2	ccd 3	ccd 6	ccd 7		ccd 0	ccd 1	ccd 2	ccd 3	ccd 6	ccd 7
level 1 events	132399	126508	146213	138624	141659	153983	grade 0 events	4894	5677	6216	5958	5356	6728
rejected events	118695	111038	131155	124163	126814	82967		3%	4%	4%	4%	3%	4%
rejected %	89%	87%	89%	89%	89%	53%	grade 1 events	73	91	93	91	78	191
								0%	0%	0%	0%	0%	0%
							grade 2 events	3244	3378	3365	2941	3220	14199
								2%	2%	2%	2%	2%	9%
							grade 3 events	1513	1672	1436	1433	1531	6560
								1%	1%	0%	1%	1%	4%
							grade 4 events	1462	1629	1517	1525	1553	6463
								1%	1%	1%	1%	1%	4%
							grade 5 events	4581	5167	4389	5469	5547	16289
								3%	4%	3%	3%	3%	10%
							grade 6 events	2596	3121	2527	2607	3192	37091
								1%	2%	1%	1%	2%	24%
							grade 7 events	114036	105773	126670	118600	121182	66462
								86%	83%	86%	85%	85%	43%

2.2 Compared Parameters

Parameter	Planned	Actual	Parameter	Planned	Actual
Instrument	ACIS	ACIS	Obspar format version number	7	7
Detector	ACIS-012367	ACIS-012367	Obspar file type	PREDICTED	ACTUAL
Grating	NONE	NONE	Obspar update status	NONE	UPDATED
Data mode	VFAINT	VFAINT	CCD I0 on	Y	Y
Observation mode	POINTING	POINTING	CCD I1 on	Y	Y
[deg] Pointing RA	255.166840	255.2294246729633	CCD I2 on	Y	Y
[deg] Pointing Dec	64.186820	64.19074715699948	CCD I3 on	Y	Y
[deg] Pointing Roll	337.839603	337.9919301495538	CCD S0 on	N	N
[mm] SIM focus pos	-0.782348	-0.7809083437167272	CCD S1 on	N	N
[mm] SIM defocus	0	0.001439871863259334	CCD S2 on	Y	Y
[mm] SIM translation stage pos	-233.592463	-233.5874344608287	CCD S3 on	O1	Y
[mm] SIM translation stage offset	0	-0.005018542100998502	CCD S4 on	N	N
[s] Observation start time (MET)	311825615.184000	311824450.38609	CCD S5 on	N	N
Observation start date	2007-11-19T02:12:30	2007-11-19T01:54:10	Number of optional ACIS chips dropped	0	0
[s] Observation end time (MET)	311842743.184000	311842984.43699	On-chip summing requested	N	N
Observation end date	2007-11-19T06:57:58	2007-11-19T07:03:04	Subarray requested	NONE	NONE
Read mode	TIMED	TIMED	Alternating exposures requested	N	N
			[s] Primary exposure time	0.000000	3.2

2.3 Aspect



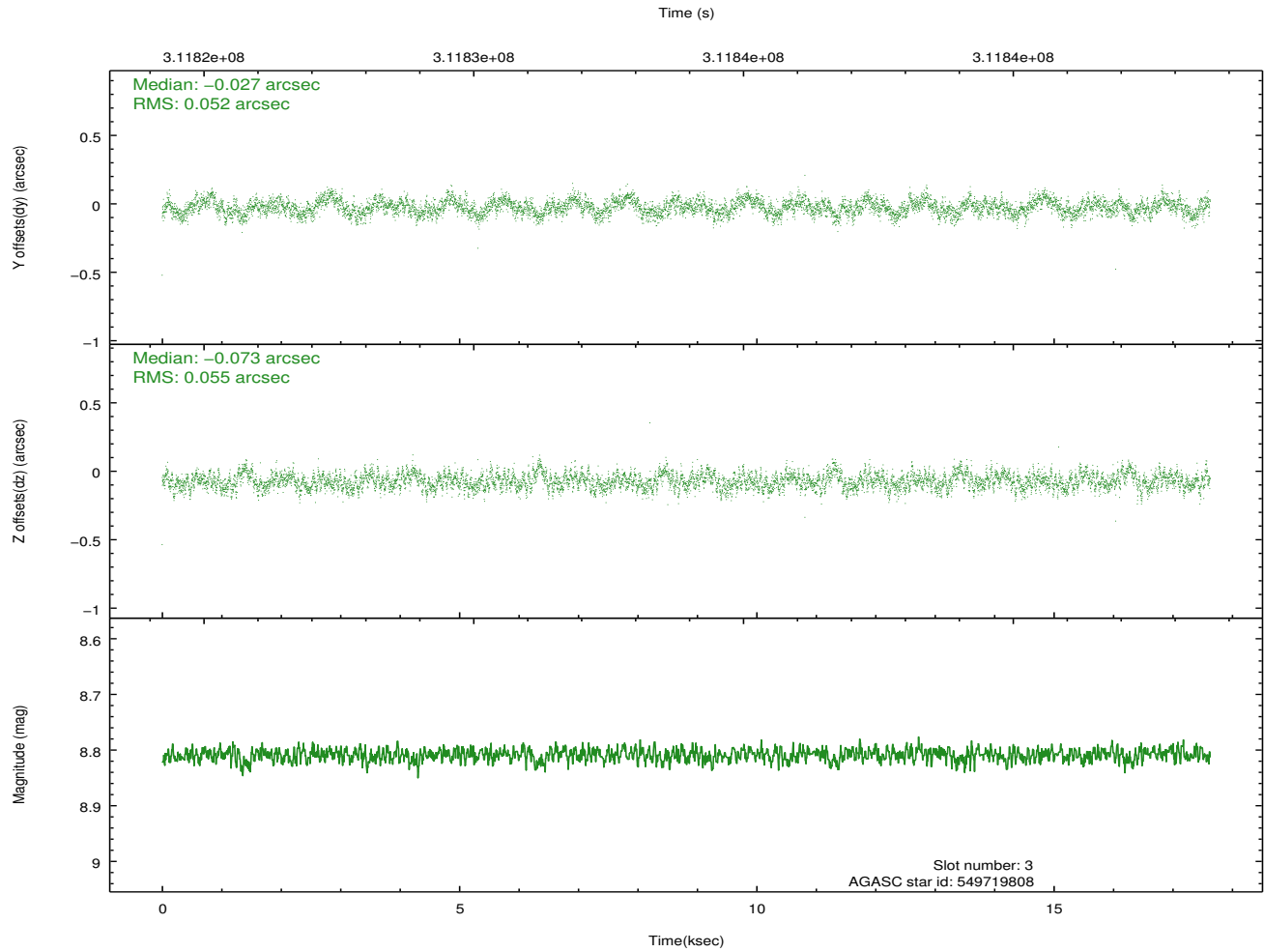
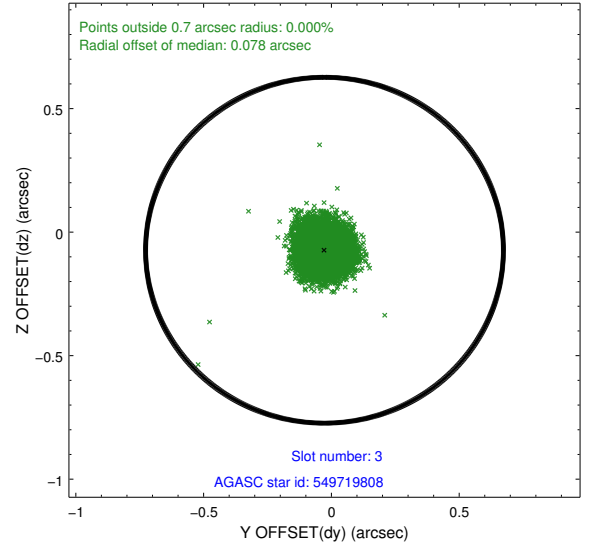
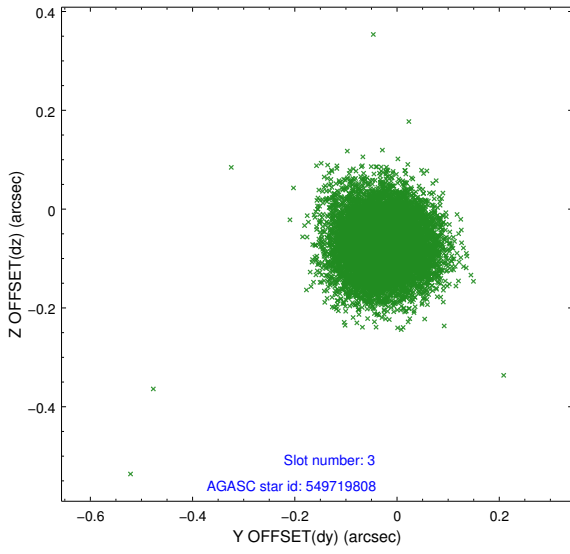


Slot Statistics

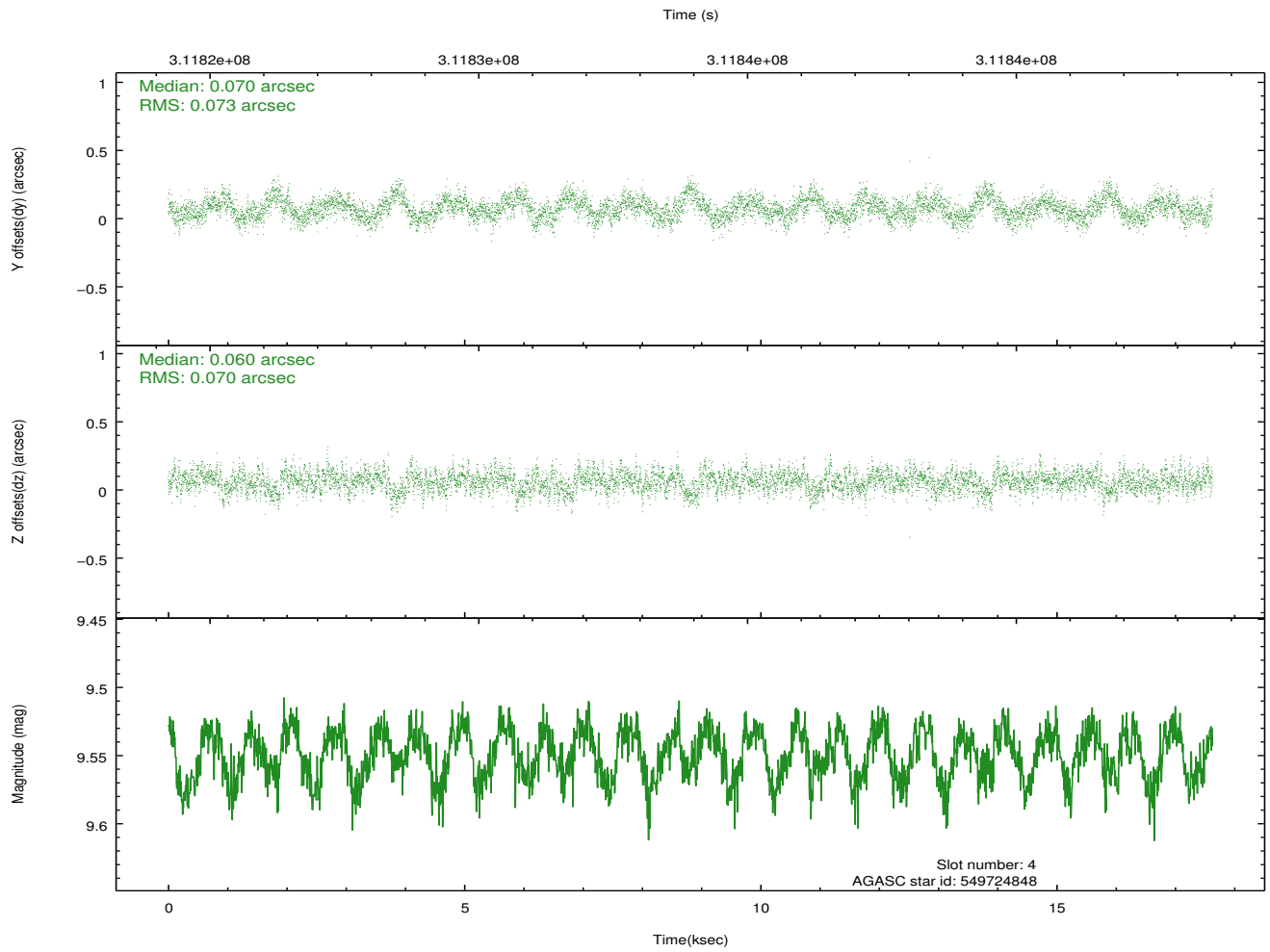
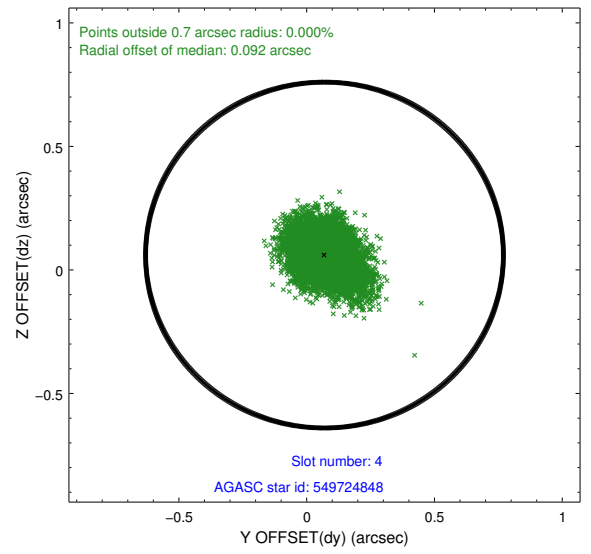
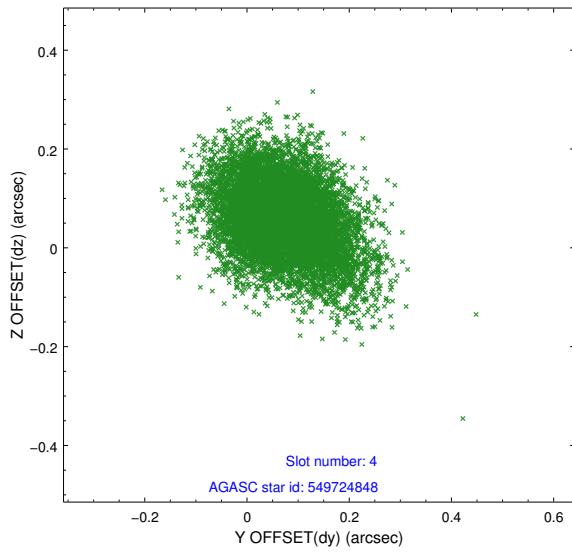
slot	status	id	mag	n_pts	med_dy	med_dz	dr1	dr2	ra	dec	mean_y	mean_z
0	FID	ACIS-I-1	7.23	4300	-0.005	-0.028	0.027	0.045	0.000000	0.000000	926.05	-839.37
1	FID	ACIS-I-4	7.15	4299	0.161	0.045	0.020	0.032	0.000000	0.000000	2146.41	1060.40
2	FID	ACIS-I-5	7.22	4300	-0.254	0.055	0.010	0.015	0.000000	0.000000	-1821.88	1058.56
3	GUIDE	549719808	8.81	8597	-0.027	-0.073	0.081	0.126	255.292775	64.694097	-509.37	1764.69
4	GUIDE	549724848	9.55	8594	0.070	0.060	0.105	0.178	255.389284	63.950133	647.29	-655.32
5	GUIDE	549726784	8.96	8593	-0.018	0.025	0.117	0.192	255.680869	64.026795	967.04	-224.51
6	GUIDE	549726944	8.19	8591	-0.039	-0.190	0.088	0.144	254.598381	64.304516	-983.37	61.37
7	GUIDE	549728568	9.33	8593	0.003	0.195	0.100	0.160	253.813006	64.122814	-1891.17	-994.57

2.4 Star Slots

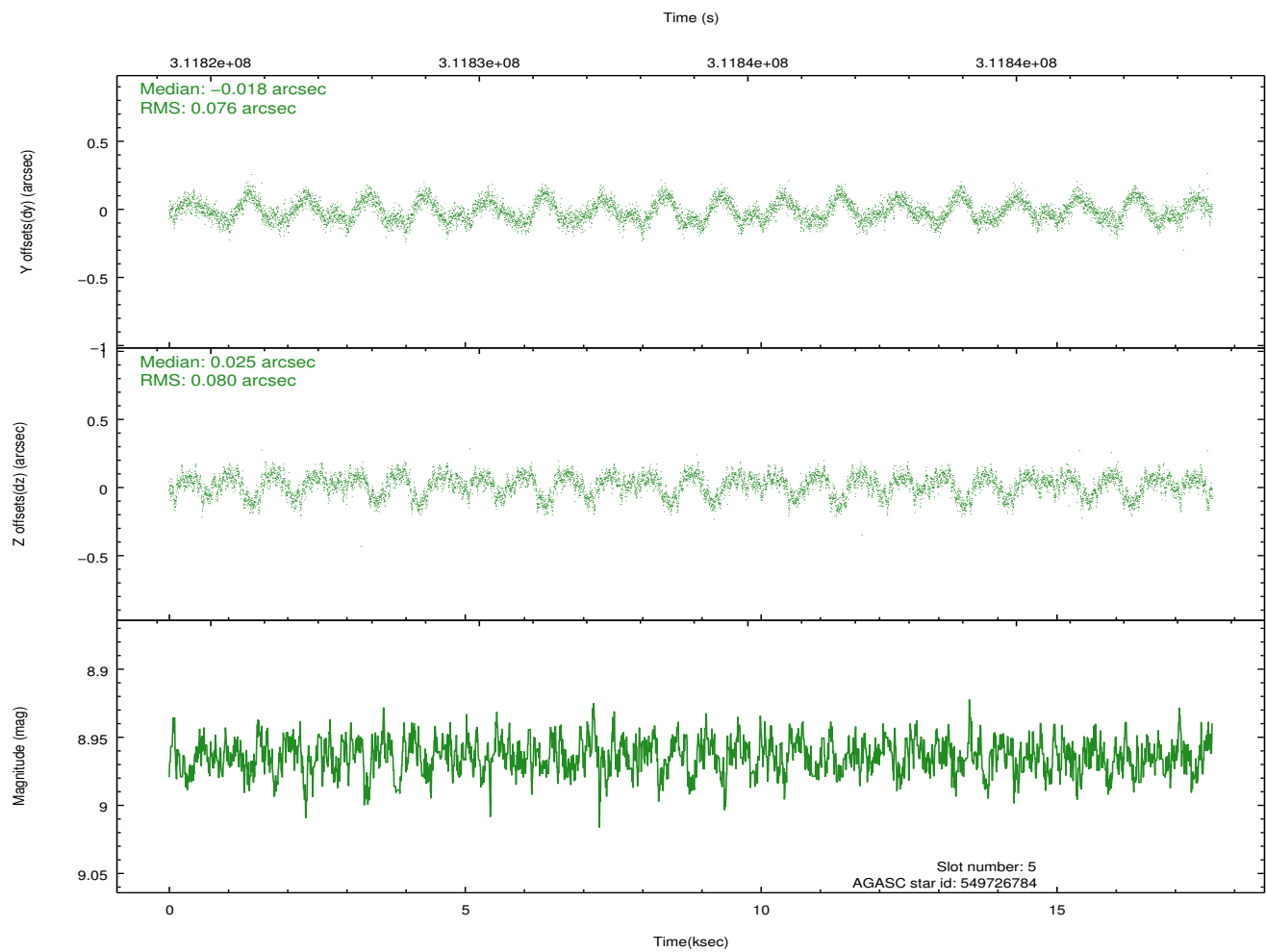
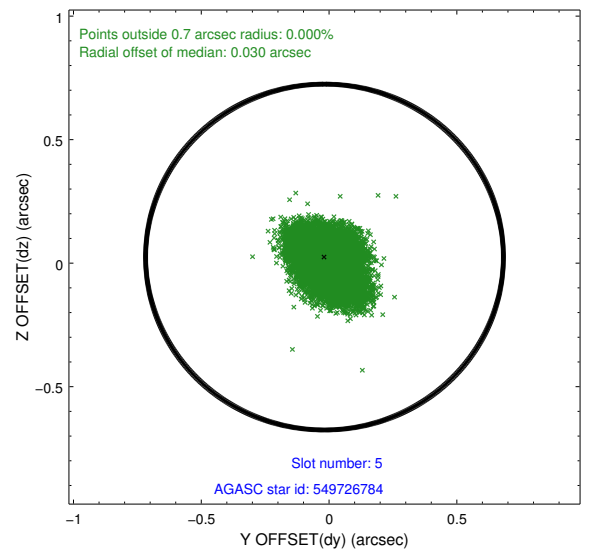
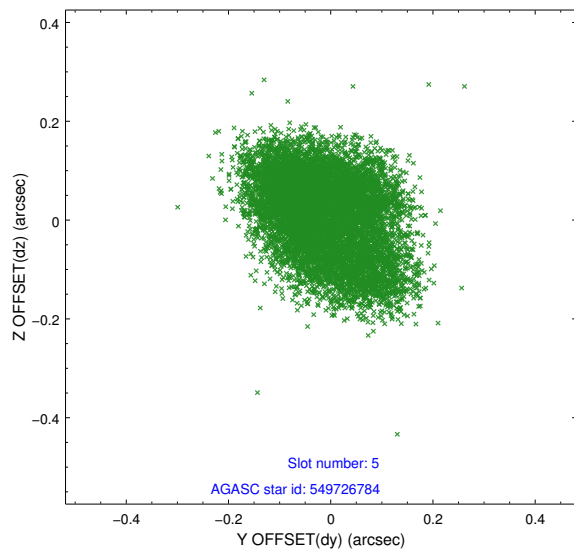
2.4.1 Slot 3



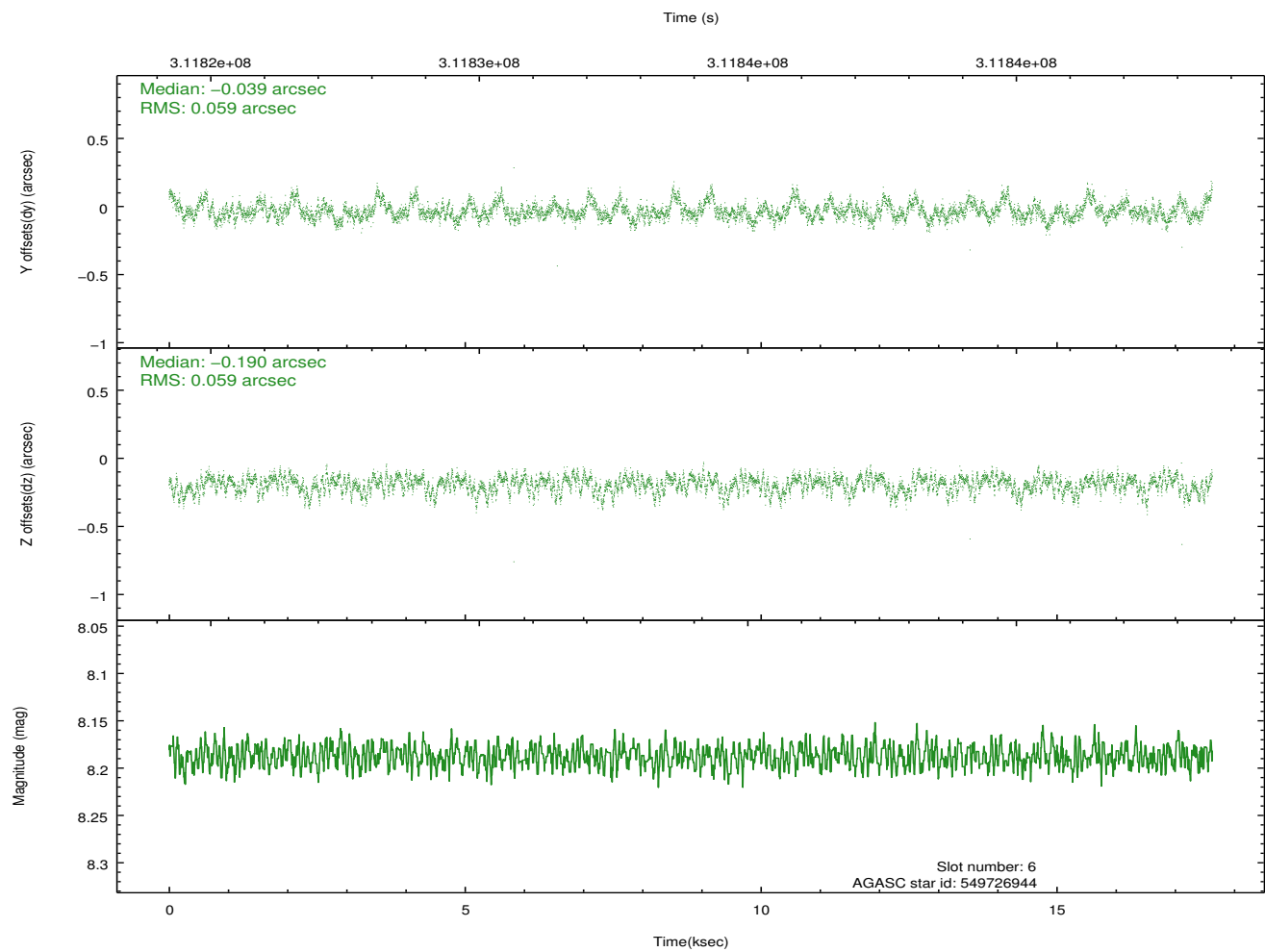
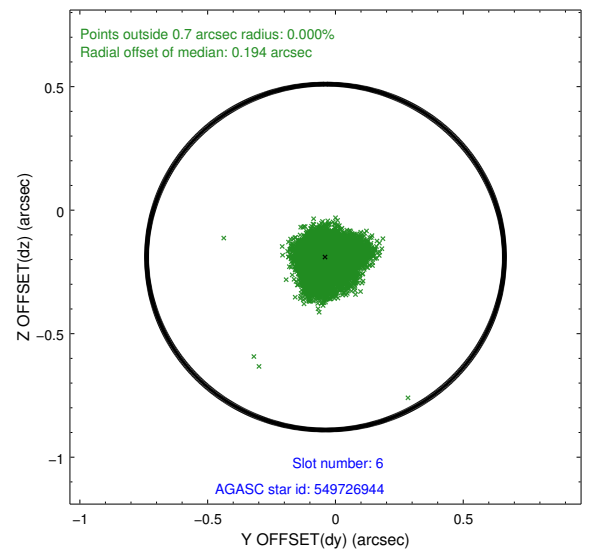
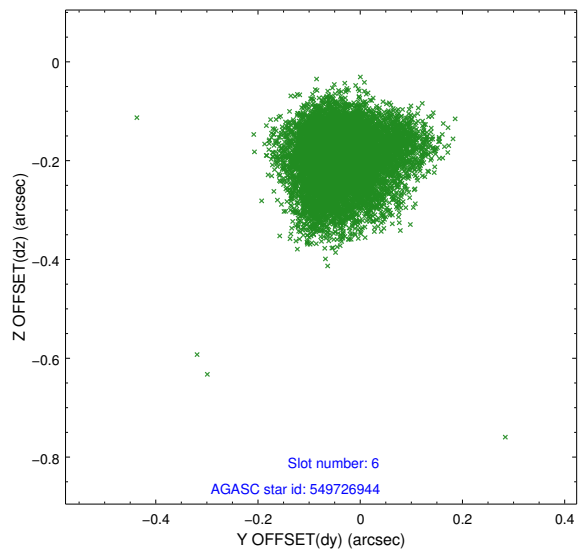
2.4.2 Slot 4



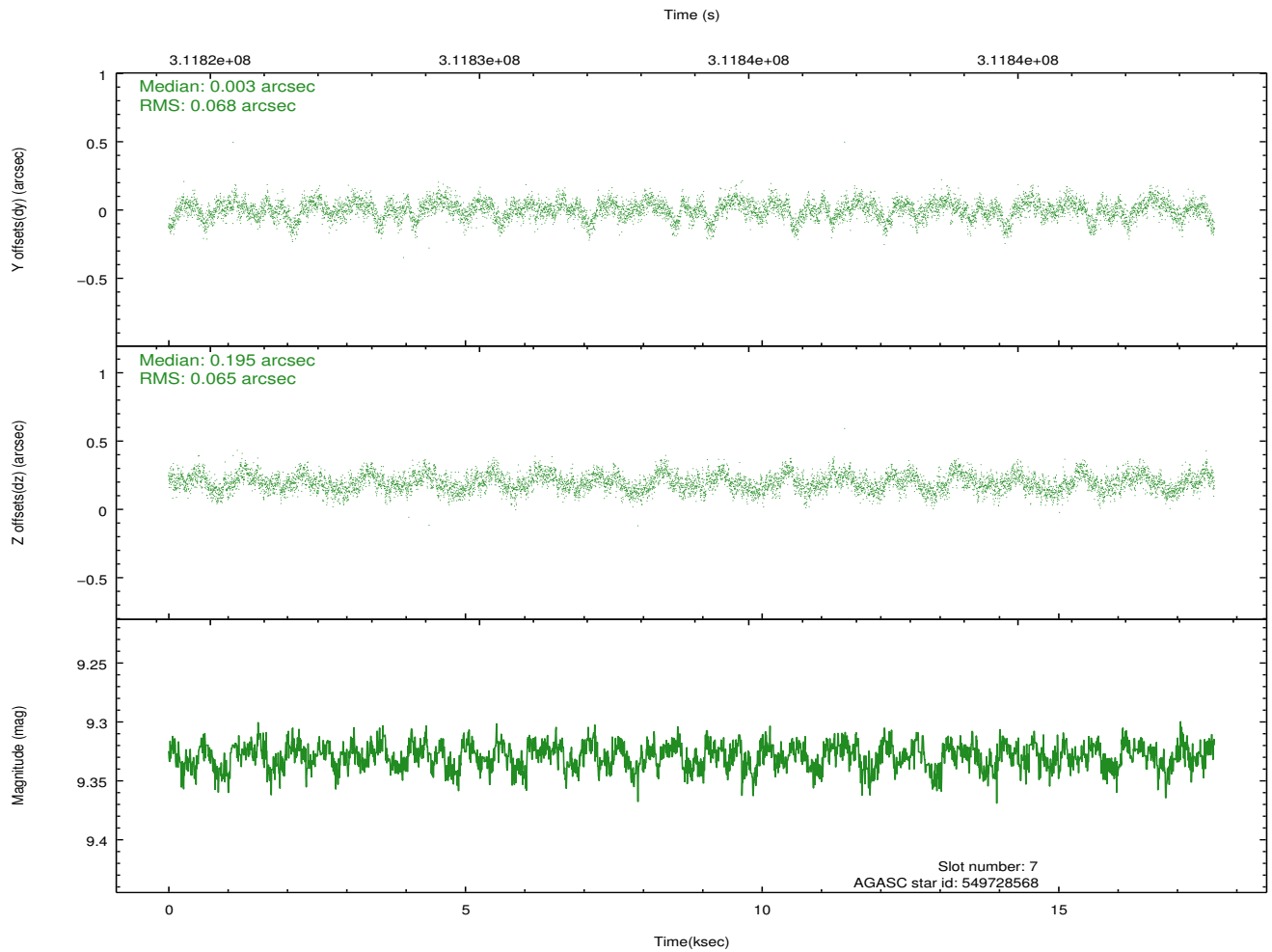
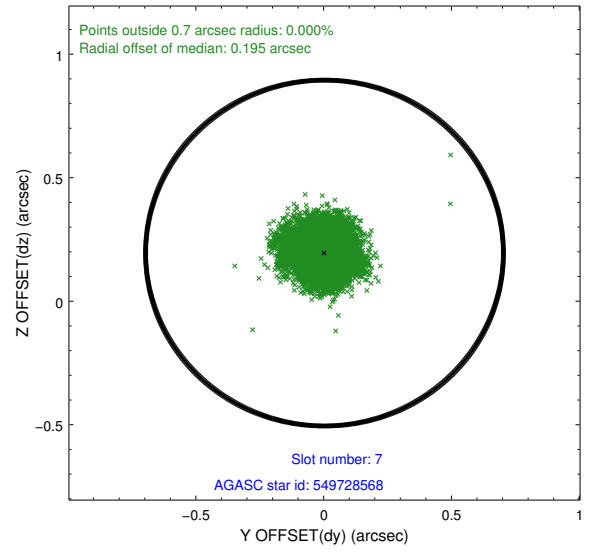
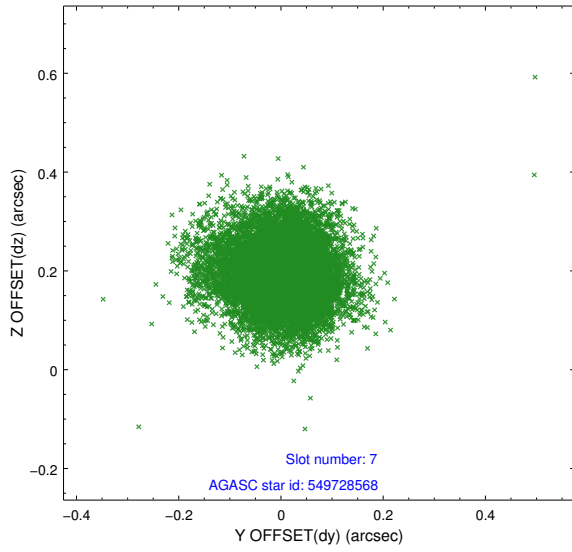
2.4.3 Slot 5



2.4.4 Slot 6

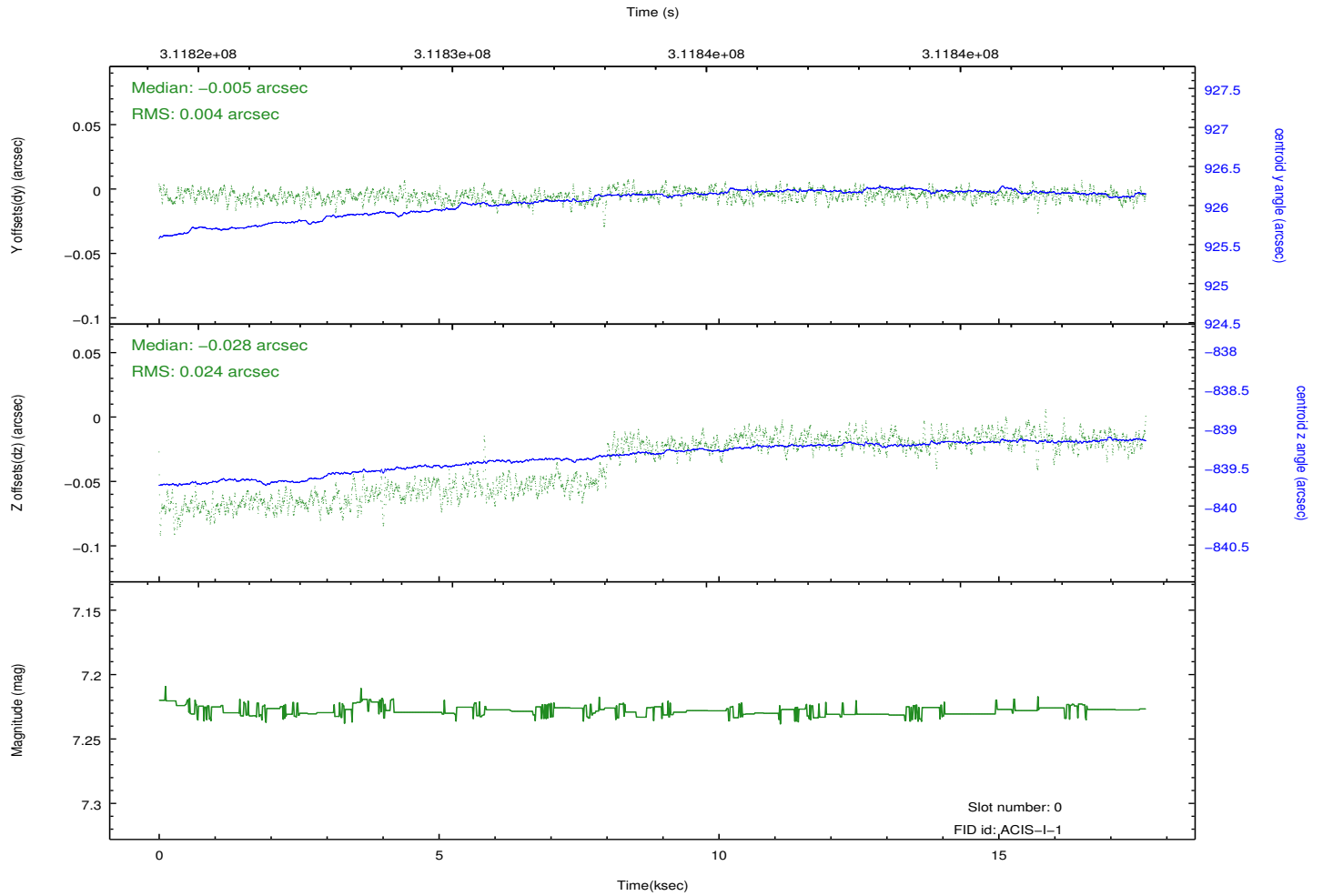
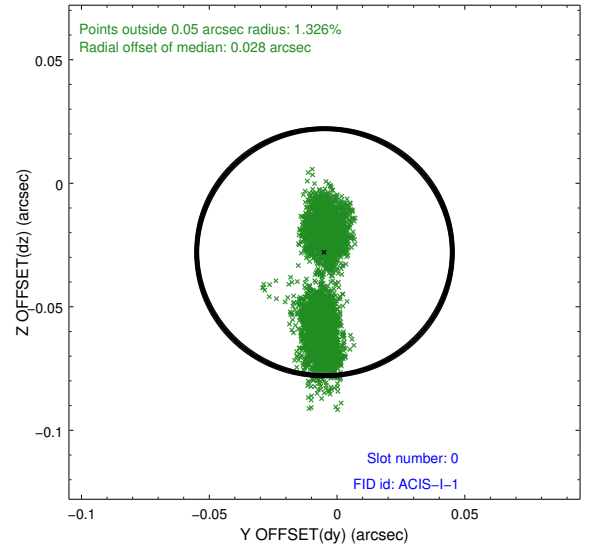
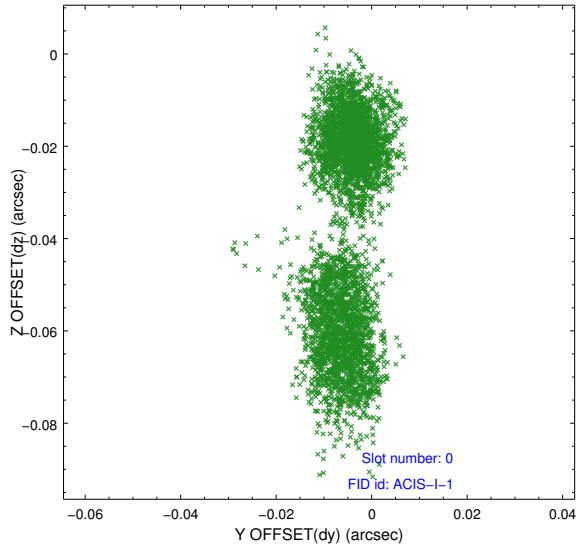


2.4.5 Slot 7

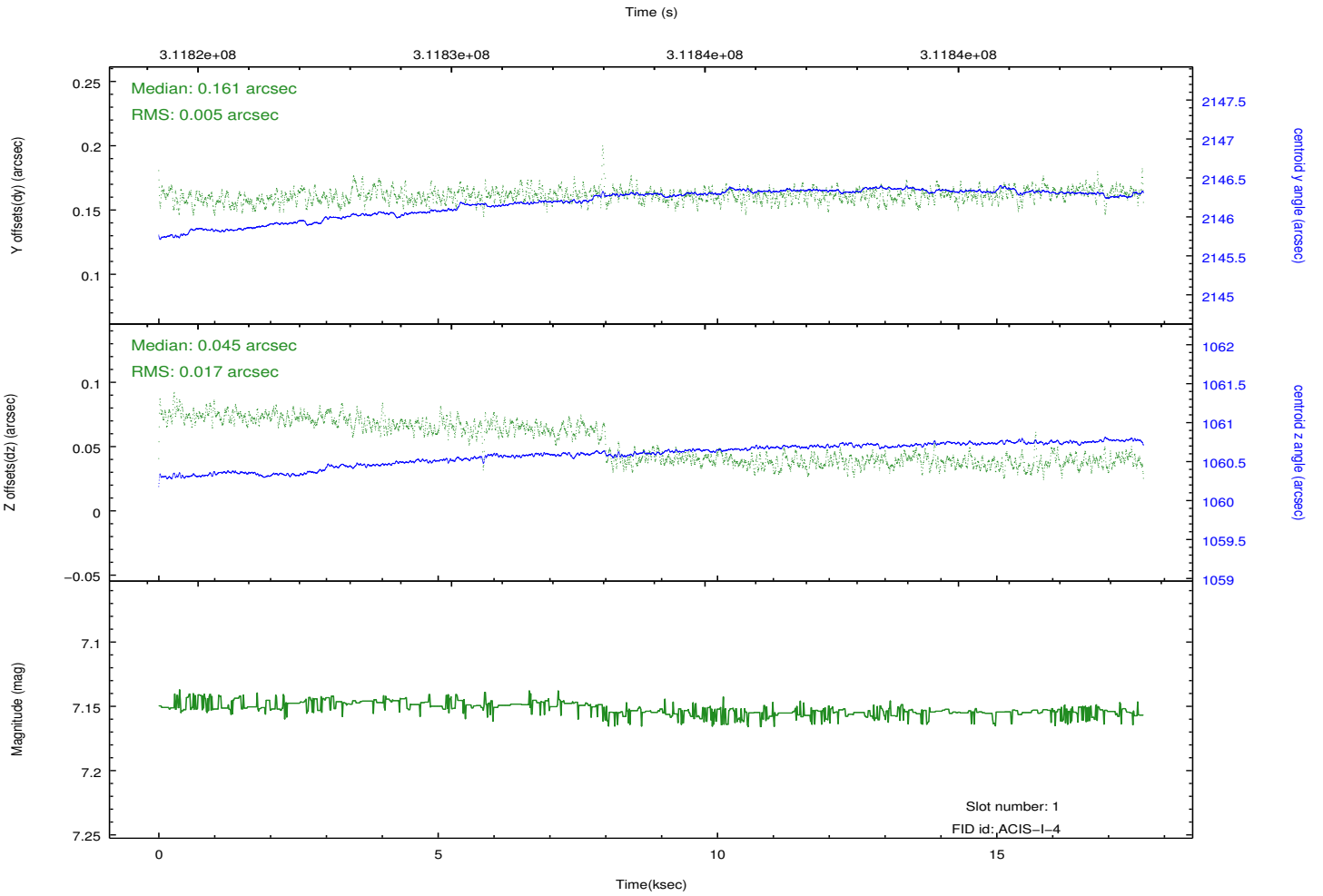
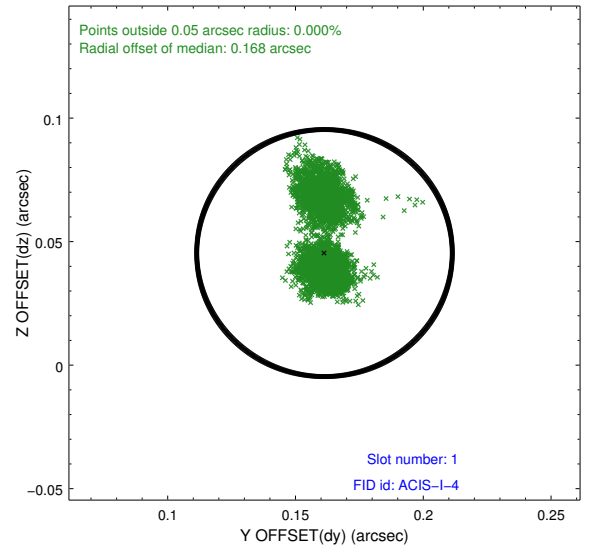
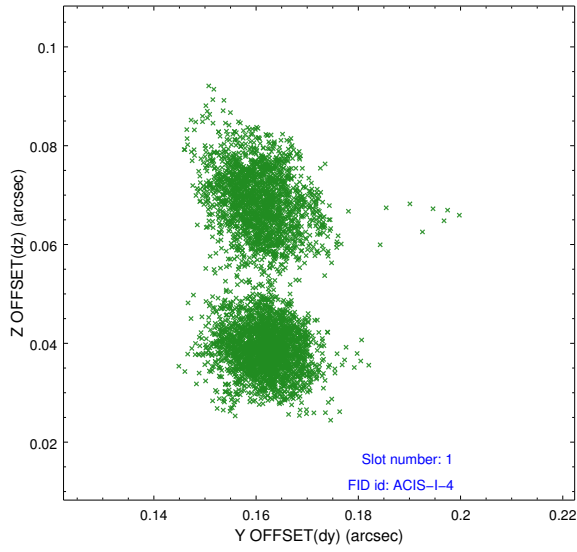


2.5 FID Slots

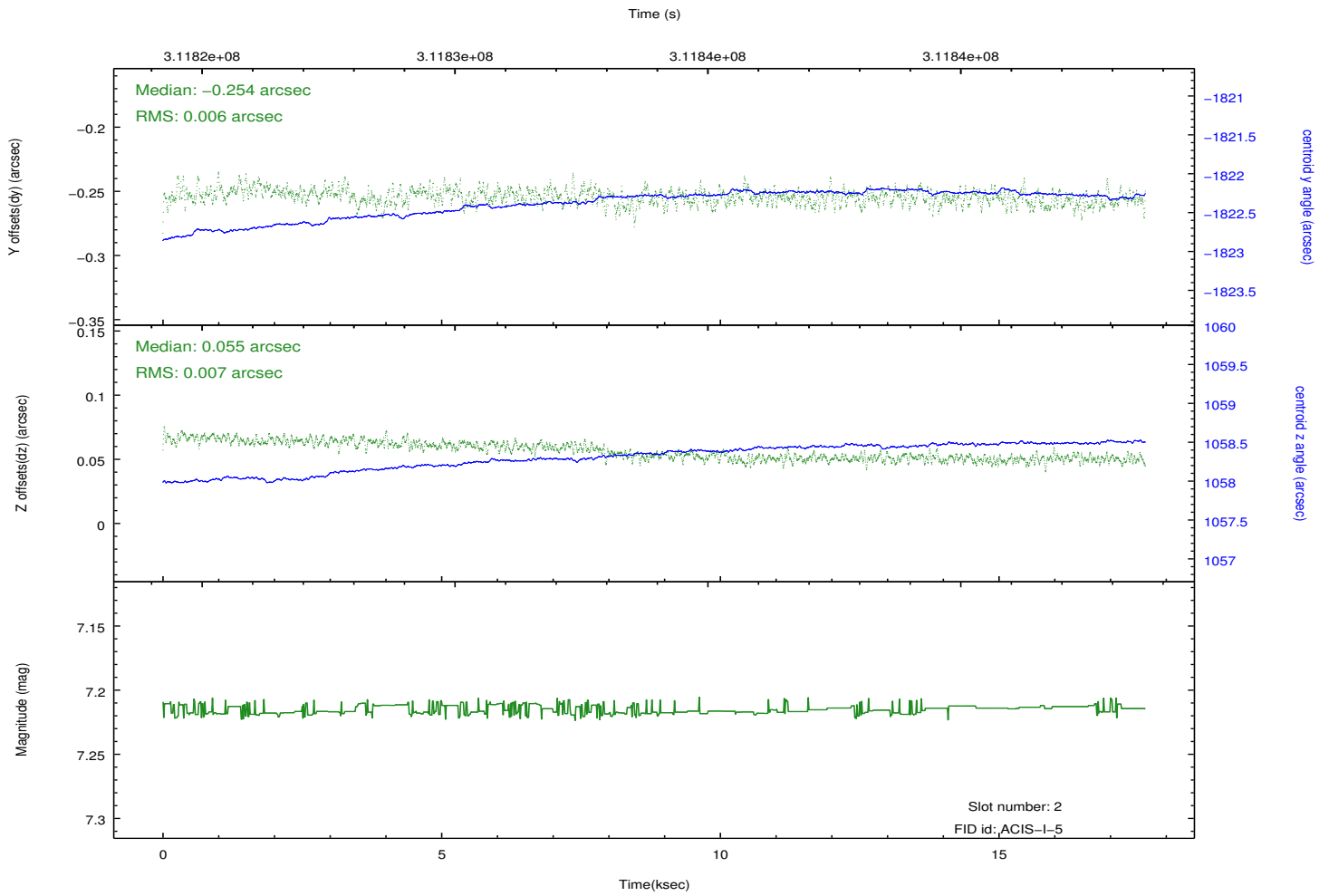
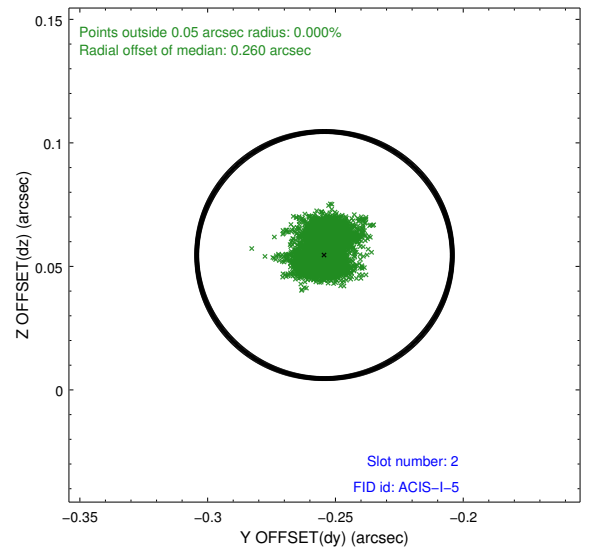
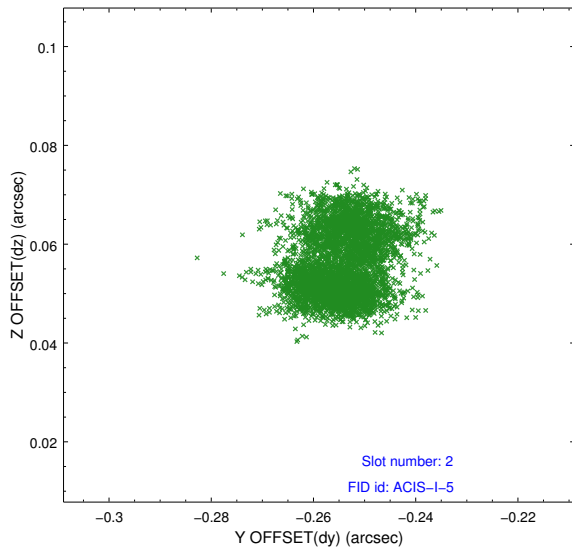
2.5.1 Slot 0



2.5.2 Slot 1



2.5.3 Slot 2



A Summary

A.1 Status

V&V Scientist	Jen Lauer
V&V Date (YYYY-MM-DD)	2012.05.07
V&V Edition	1
V&V Disposition and Status	OK
V&V Charge Time	17.1679999

A.2 Comments

Roll preference met.