

# V&V Reference Report

## L2 ASCDS Version : 8.4.4

Observation 9800 - L2 Version 2  
Chandra X-Ray Center

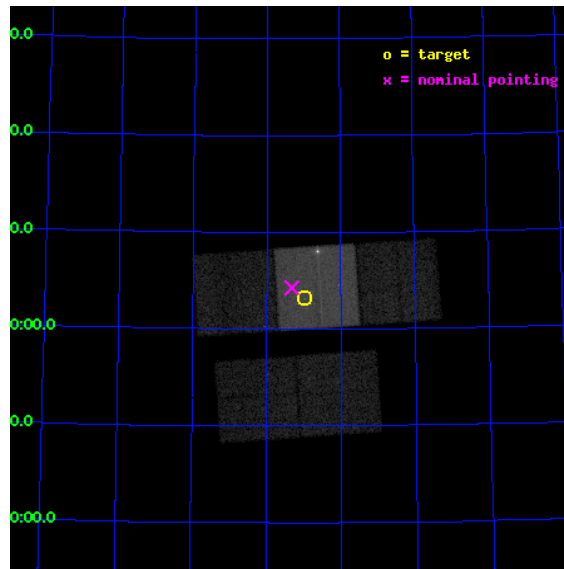
L2 Processing Date : May 8 2012

## Contents

<b>1</b>	<b>Front</b>	<b>2</b>
<b>2</b>	<b>OBI</b>	<b>3</b>
2.1	OBI . . . . .	3
2.1.1	Images . . . . .	3
2.1.2	Bias . . . . .	3
2.1.3	Parameters . . . . .	4
2.1.4	Events . . . . .	4
2.2	Compared Parameters . . . . .	5
2.3	Aspect . . . . .	6
2.4	Star Slots . . . . .	9
2.4.1	Slot 3 . . . . .	9
2.4.2	Slot 4 . . . . .	10
2.4.3	Slot 5 . . . . .	11
2.4.4	Slot 6 . . . . .	12
2.4.5	Slot 7 . . . . .	13
2.5	FID Slots . . . . .	14
2.5.1	Slot 0 . . . . .	14
2.5.2	Slot 1 . . . . .	15
2.5.3	Slot 2 . . . . .	16
<b>A</b>	<b>Summary</b>	<b>17</b>
A.1	Status . . . . .	17
A.2	Comments . . . . .	17

# 1 Front

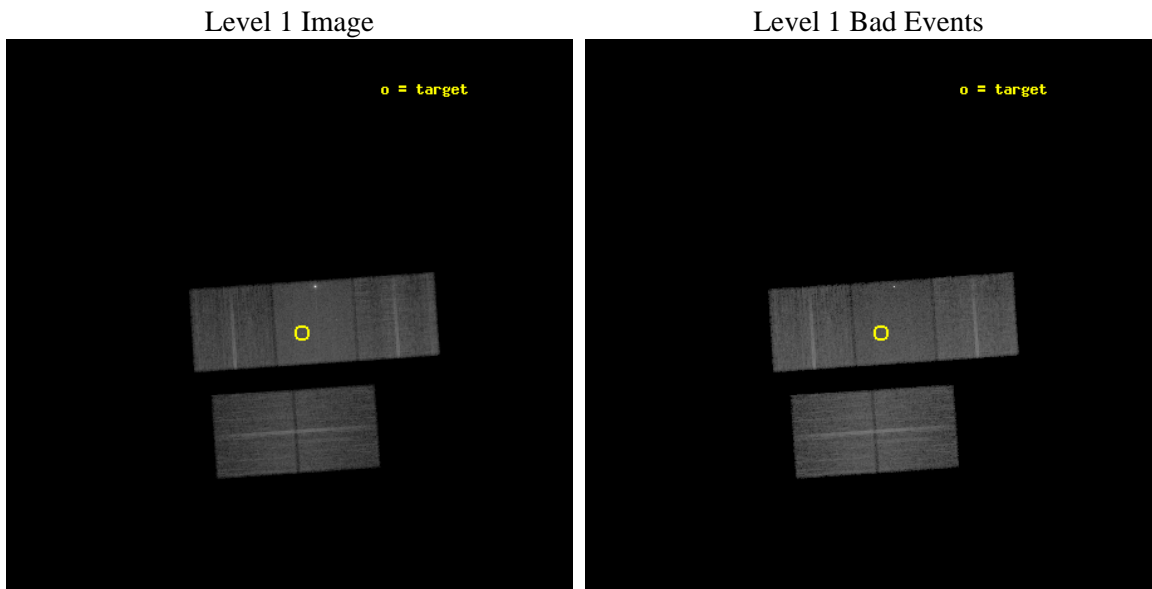
seq_num	701672	Sequence number
obs_id	9800	Observation id
title	Investigating the physics behind the X-ray / radio offset in 4C 74.26	Proposal title
observer	Ms Mary Erlund	Principal investigator
object	4C 74.26 Southern Hotspot	Source name
dtcycle	0	&#160
cycle	P	events from which exps? Prim/Second/Both
ra_targ	310.744583	Observer's specified target RA [deg]
dec_targ	75.053611	Observer's specified target Dec [deg]
ra_nom	310.83040905314	Nominal RA [deg]
dec_nom	75.071308233043	Nominal Dec [deg]
roll_nom	356.07369809051	Nominal Roll [deg]
revision	2	Processing version of data
ontime	13029.300100207	Sum of GTIs [s]
livetime	12859.062702367	Livetime [s]
ontime2	13023.018299043	Sum of GTIs [s]
ontime3	13029.300100207	Sum of GTIs [s]
ontime6	13029.300100207	Sum of GTIs [s]
ontime7	13029.300100207	Sum of GTIs [s]
ontime8	13029.300100207	Sum of GTIs [s]
l2events	146025	Number of level 2 events



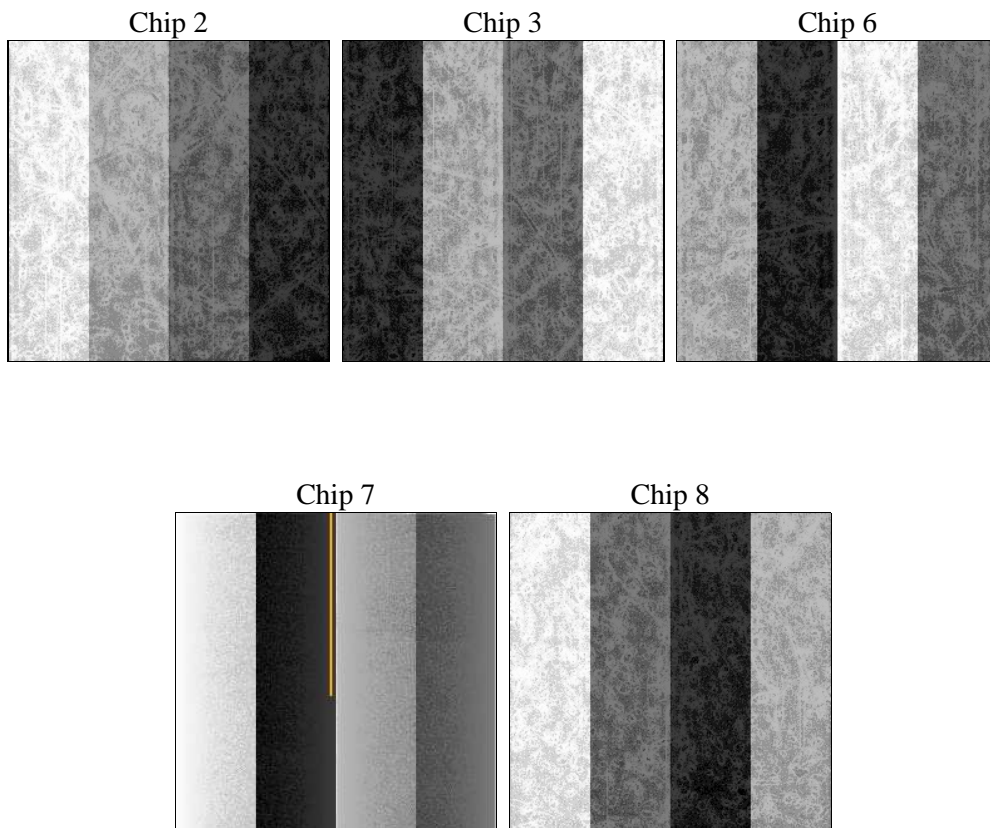
## 2 OBI

### 2.1 OBI

#### 2.1.1 Images



#### 2.1.2 Bias



### 2.1.3 Parameters

obi_num	0	Obi number	sched_exp_time	13000.000000	[s] Scheduled observation exposure time
ascdsver	8.4.4	Processing system revision	ontime	13029.300100207	Sum of GTIs [s]
caldbver	4.4.9	&#160	ontime2	13023.018299043	Sum of GTIs [s]
date	2012-05-08T14:51:15	Date and time of file creation	ontime3	13029.300100207	Sum of GTIs [s]
revision	2	Processing version of data	ontime6	13029.300100207	Sum of GTIs [s]
			ontime7	13029.300100207	Sum of GTIs [s]
			ontime8	13029.300100207	Sum of GTIs [s]
			l1events	749920	Number of level 1 events

### 2.1.4 Events

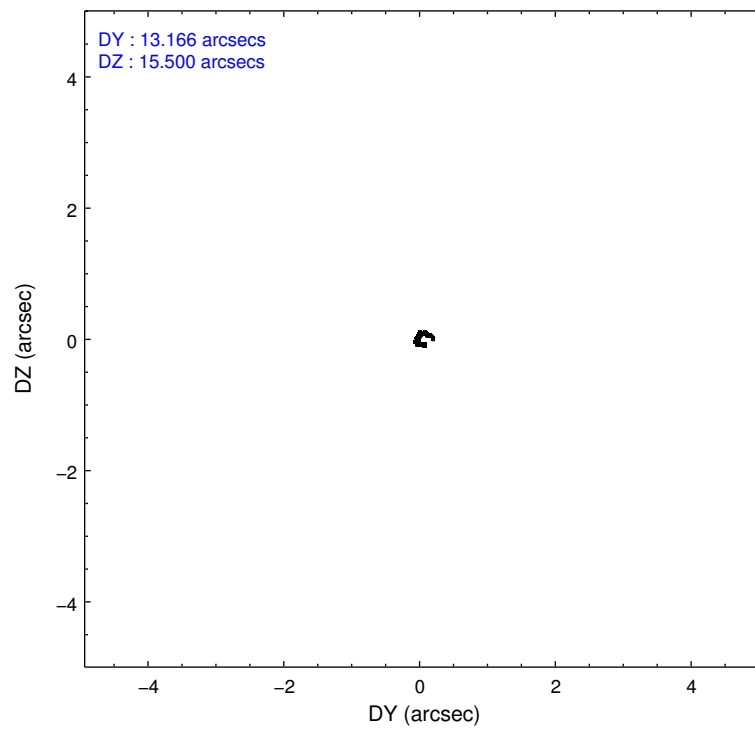
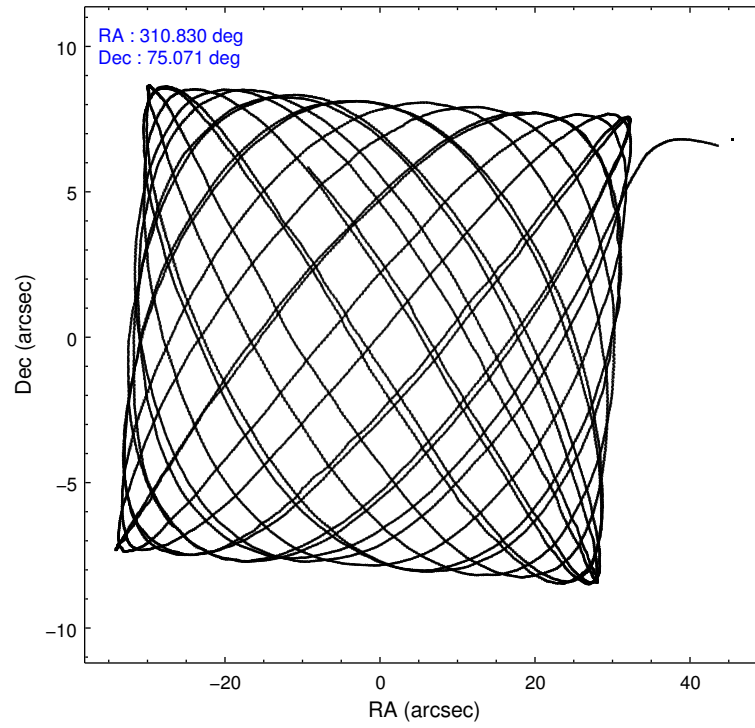
	ccd 2	ccd 3	ccd 6	ccd 7	ccd 8
level 1 events	124720	124034	131062	208290	161814
rejected events	109604	109040	115453	115801	125317
rejected %	87%	87%	88%	55%	77%

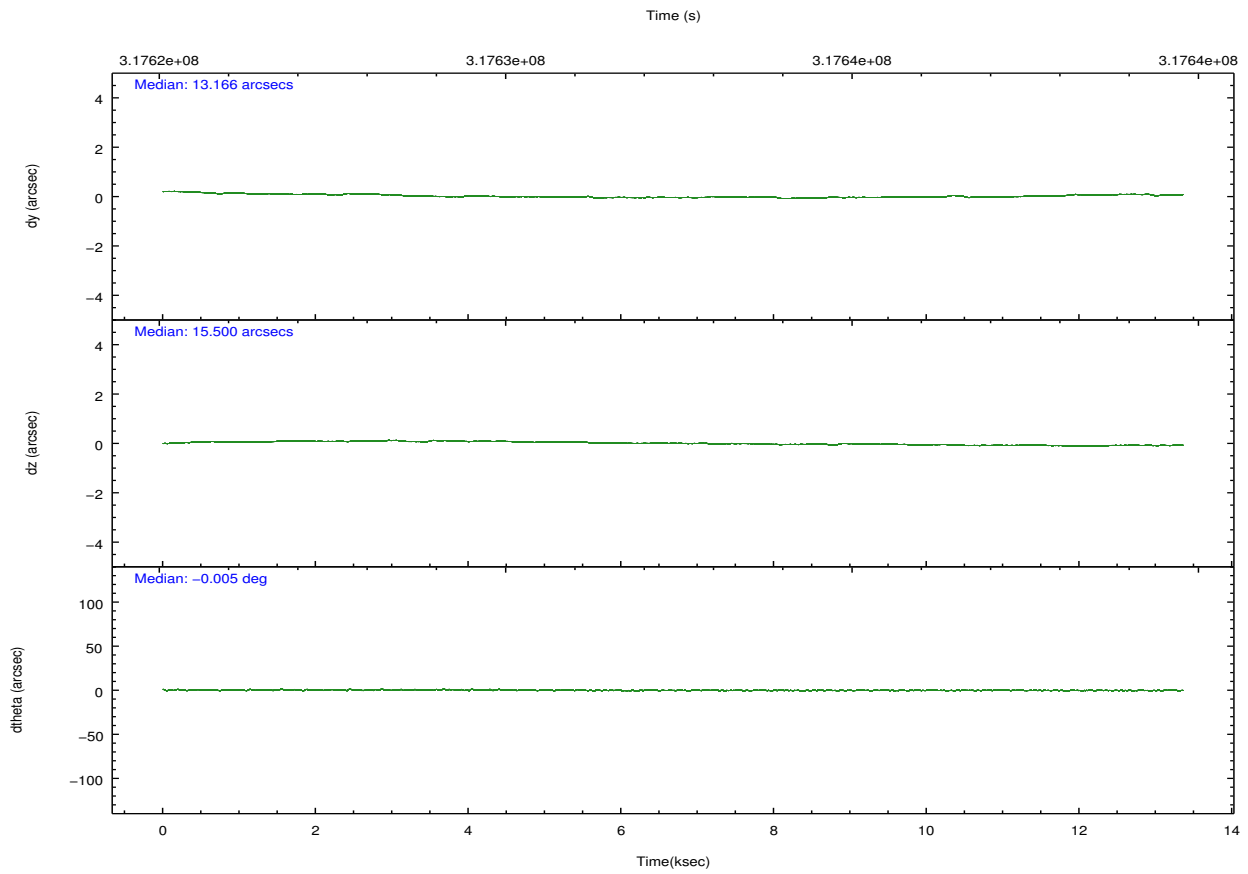
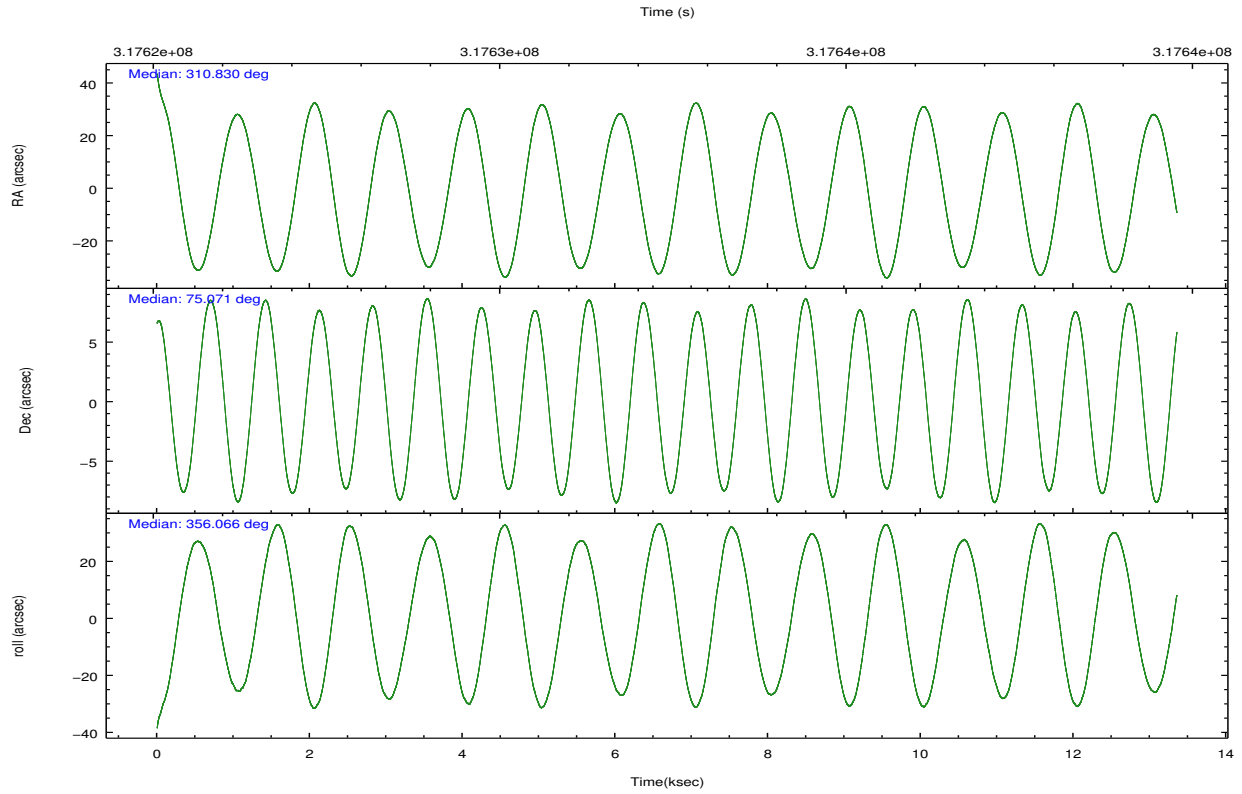
	ccd 2	ccd 3	ccd 6	ccd 7	ccd 8
grade 0 events	6615	6529	5989	9665	11518
	5%	5%	4%	4%	7%
grade 1 events	93	78	67	1005	108
	0%	0%	0%	0%	0%
grade 2 events	3225	2982	3521	19826	8055
	2%	2%	2%	9%	4%
grade 3 events	1348	1402	1484	8300	3819
	1%	1%	1%	3%	2%
grade 4 events	1444	1384	1422	8461	3521
	1%	1%	1%	4%	2%
grade 5 events	4992	5899	6064	19292	8034
	4%	4%	4%	9%	4%
grade 6 events	2489	2704	3196	46282	9593
	1%	2%	2%	22%	5%
grade 7 events	104514	103056	109319	95459	117166
	83%	83%	83%	45%	72%

## 2.2 Compared Parameters

Parameter	Planned	Actual	Parameter	Planned	Actual
Instrument	ACIS	ACIS	Obspar format version number	7	7
Detector	ACIS-23678	ACIS-23678	Obspar file type	PREDICTED	ACTUAL
Grating	NONE	NONE	Obspar update status	NONE	UPDATED
Data mode	VFAINT	VFAINT	CCD I0 on	N	N
Observation mode	POINTING	POINTING	CCD I1 on	N	N
[deg] Pointing RA	310.735653	310.8304090531371	CCD I2 on	O1	Y
[deg] Pointing Dec	75.058966	75.07130823304276	CCD I3 on	Y	Y
[deg] Pointing Roll	356.008624	356.0736980905076	CCD S0 on	N	N
[mm] SIM focus pos	-0.684267	-0.6828225247311905	CCD S1 on	N	N
[mm] SIM defocus	0	0.001444936568705701	CCD S2 on	Y	Y
[mm] SIM translation stage pos	-190.132523	-190.1400660498719	CCD S3 on	Y	Y
[mm] SIM translation stage offset	0	0.00754346686406393	CCD S4 on	Y	Y
[s] Observation start time (MET)	317626091.184000	317625075.82925	CCD S5 on	N	N
Observation start date	2008-01-25T05:27:06	2008-01-25T05:11:15	Number of optional ACIS chips dropped	0	0
[s] Observation end time (MET)	317639091.184000	317639735.89246	On-chip summing requested	N	N
Observation end date	2008-01-25T09:03:46	2008-01-25T09:15:35	Subarray requested	NONE	NONE
Read mode	TIMED	TIMED	Alternating exposures requested	N	N
			[s] Primary exposure time	0.000000	3.1

## 2.3 Aspect



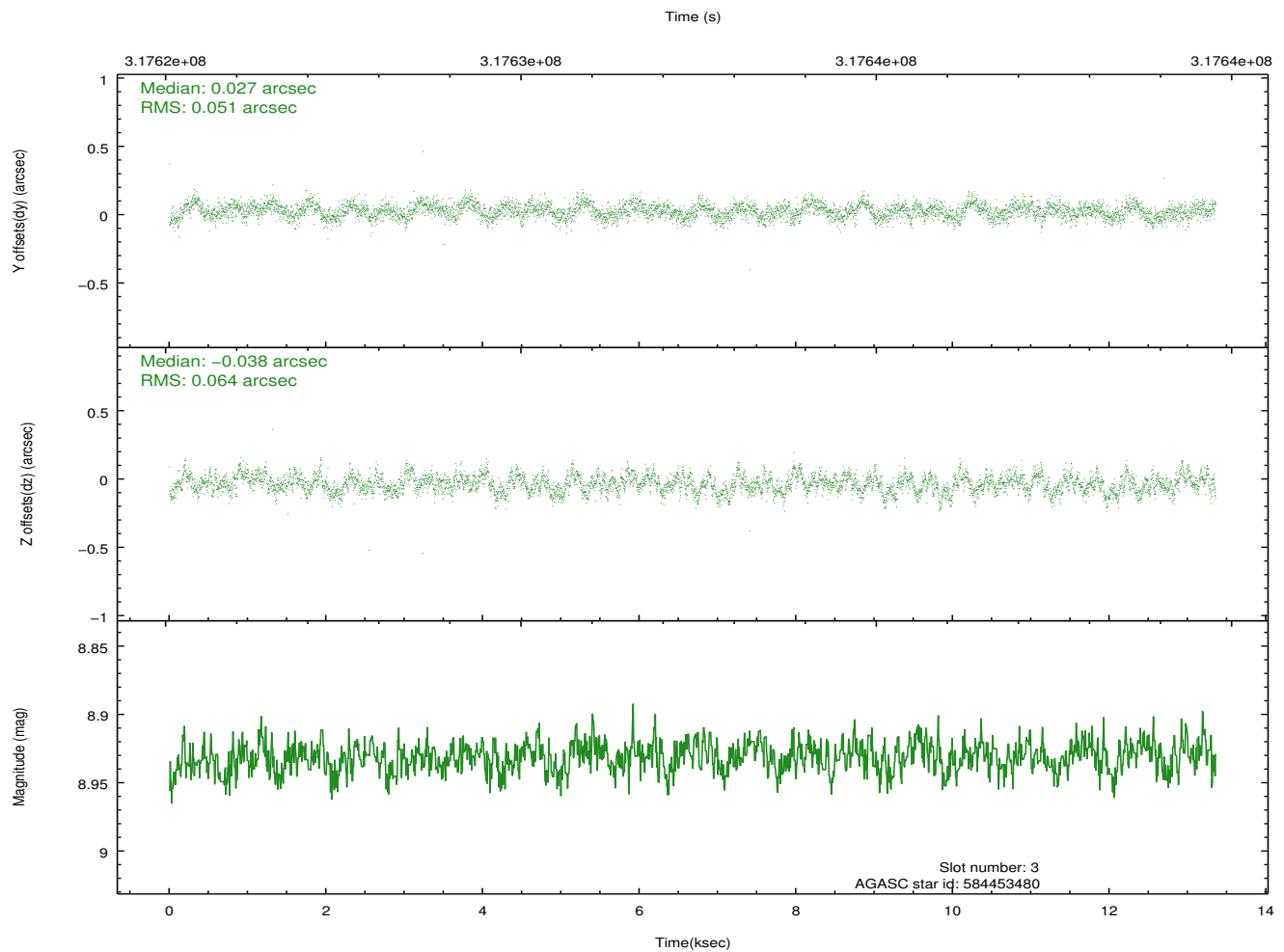
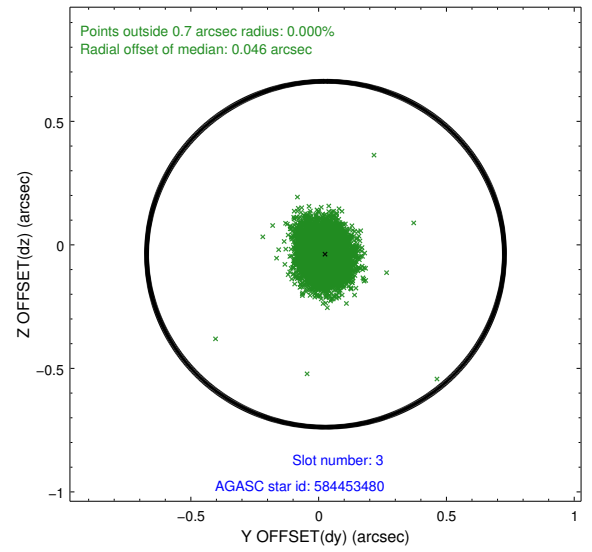
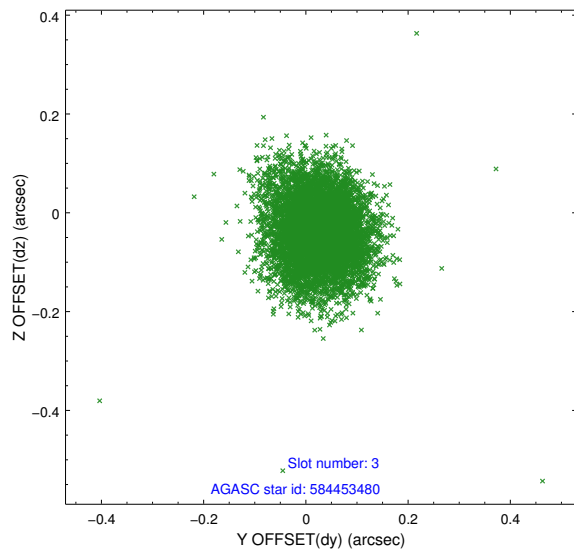


### Slot Statistics

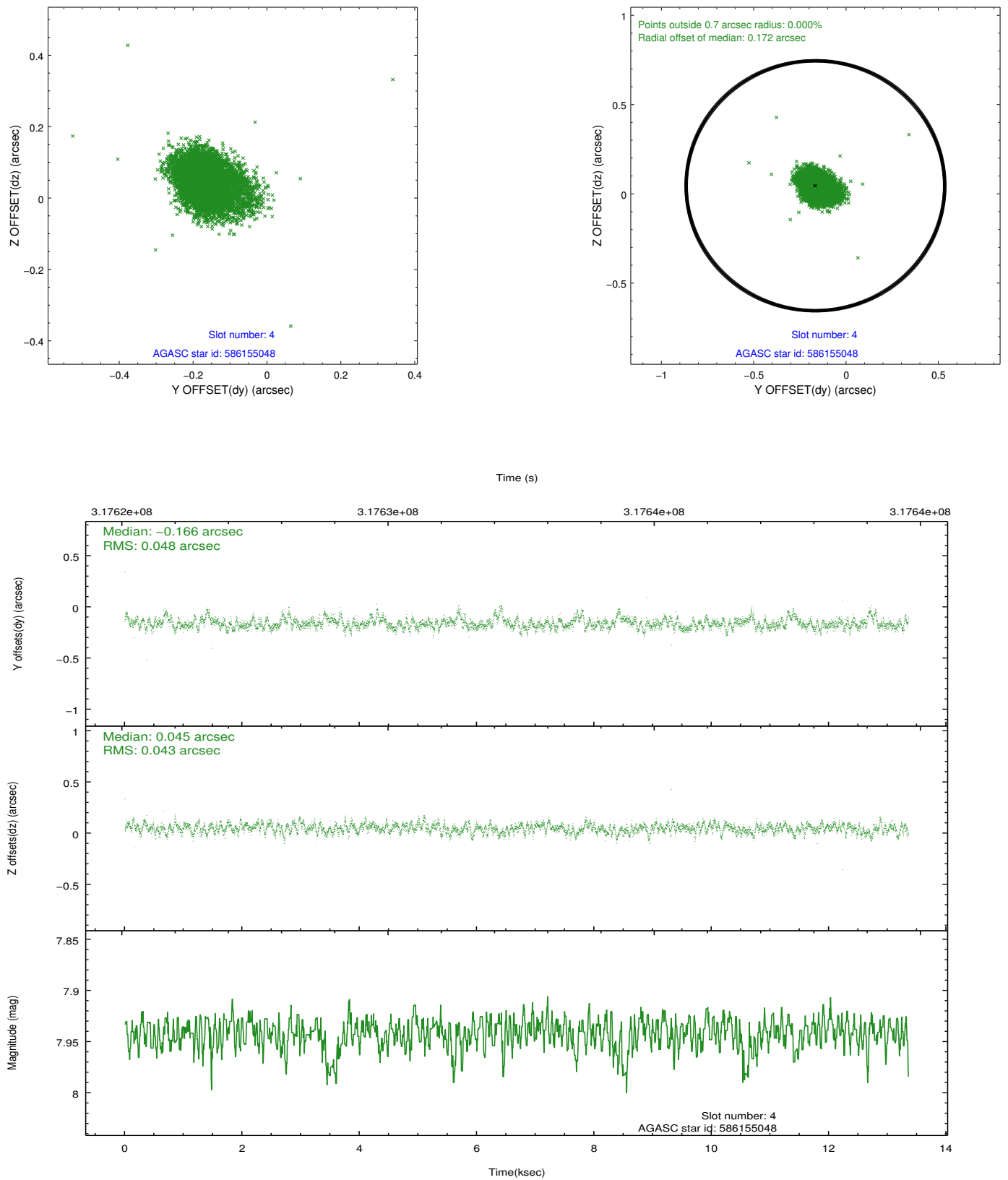
slot	status	id	mag	n_pts	med_dy	med_dz	dr1	dr2	ra	dec	mean_y	mean_z
0	FID	ACIS-S-2	7.09	3258	-0.056	-0.023	0.011	0.018	0.000000	0.000000	-766.14	-1736.93
1	FID	ACIS-S-4	7.19	3257	0.179	0.033	0.010	0.019	0.000000	0.000000	2147.18	171.28
2	FID	ACIS-S-5	7.22	3258	-0.153	-0.002	0.010	0.016	0.000000	0.000000	-1818.65	165.26
3	GUIDE	584453480	8.93	6507	0.027	-0.038	0.085	0.140	311.245727	74.720187	567.87	-1180.61
4	GUIDE	586155048	7.94	6515	-0.166	0.045	0.065	0.115	312.135794	74.489876	1486.57	-1933.44
5	GUIDE	586158584	7.67	6515	0.112	-0.081	0.092	0.138	312.959225	74.639083	2217.95	-1320.73
6	GUIDE	601098528	9.12	6512	0.042	-0.022	0.097	0.151	310.058226	75.008164	-616.24	-222.83
7	GUIDE	601099480	9.94	6500	-0.012	0.098	0.127	0.210	313.504982	75.400753	2416.27	1461.82

## 2.4 Star Slots

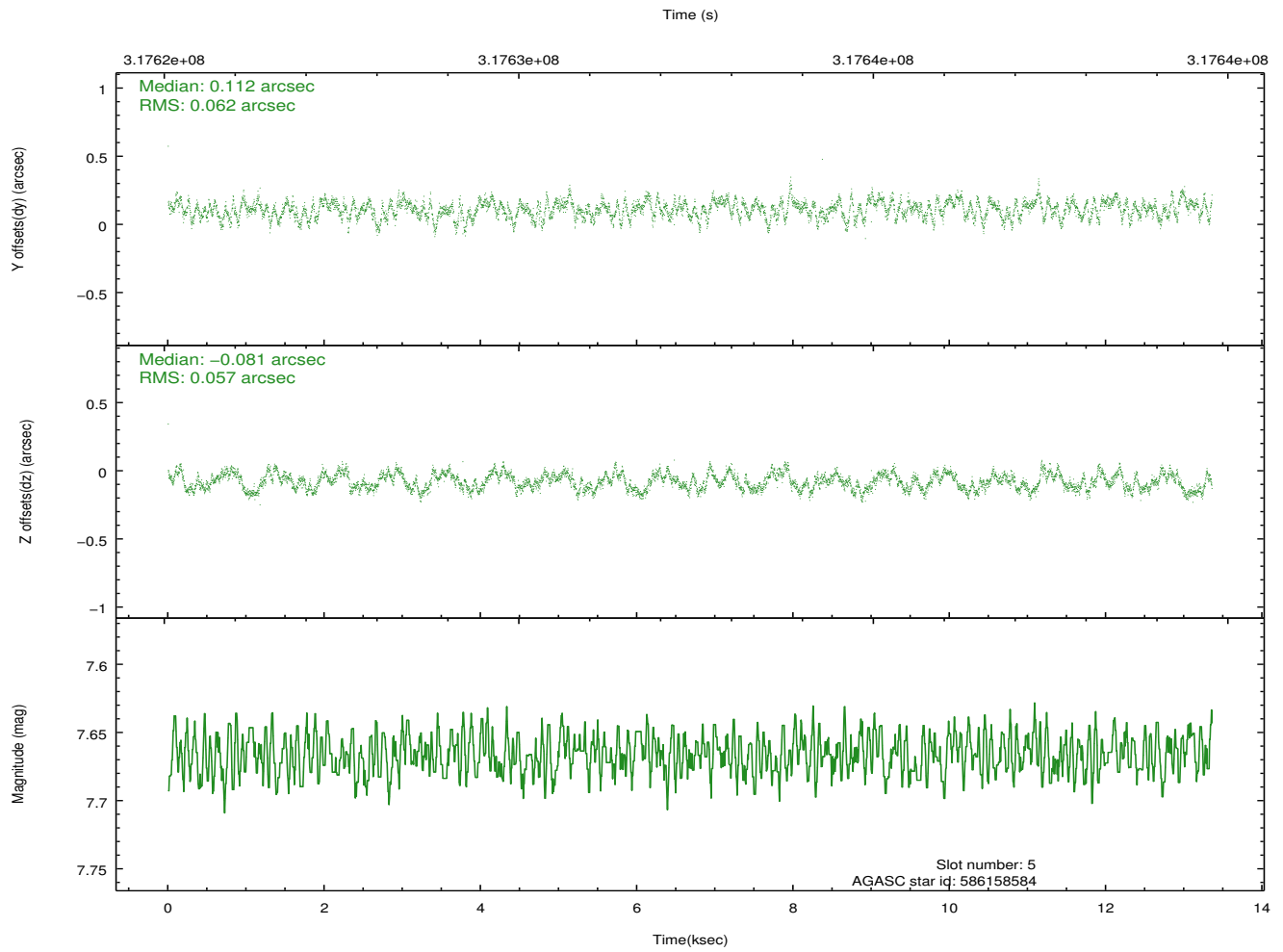
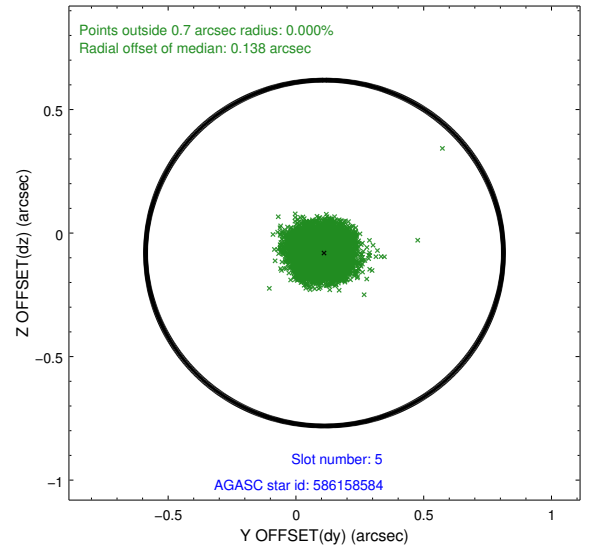
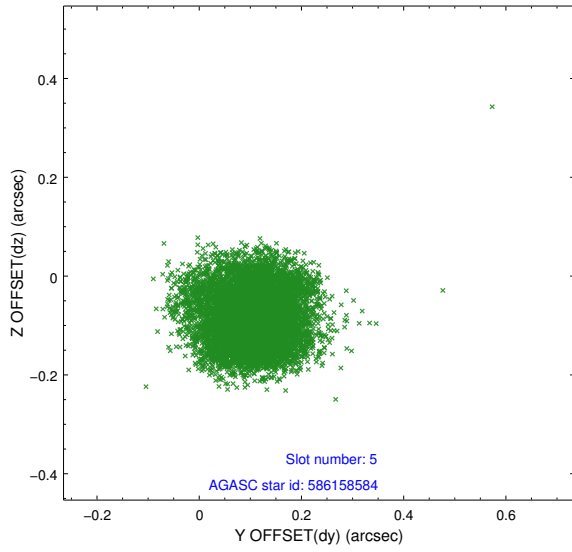
### 2.4.1 Slot 3



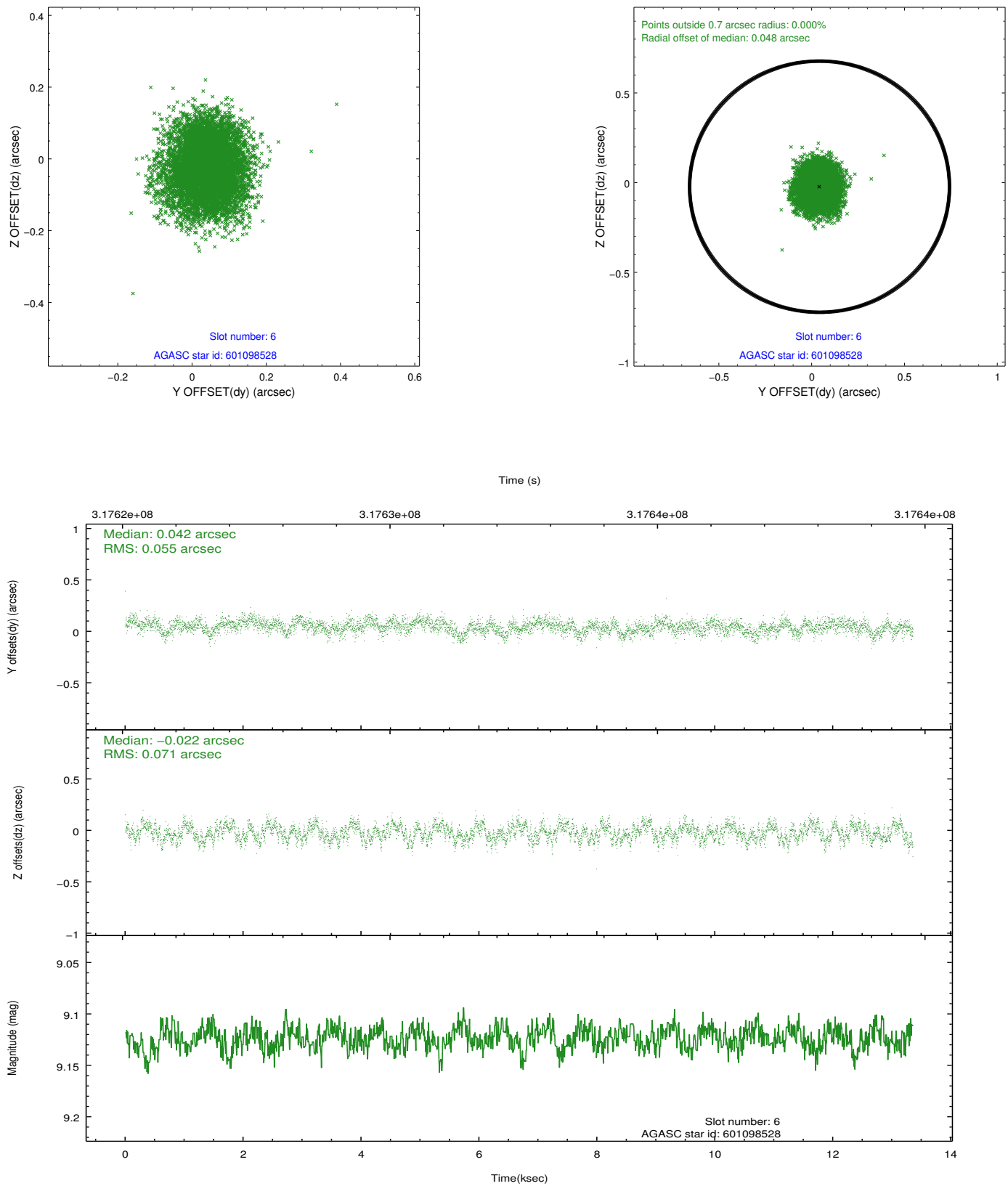
## 2.4.2 Slot 4



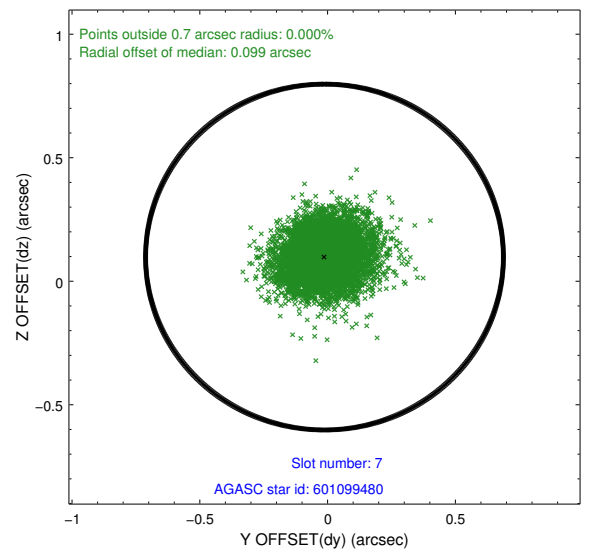
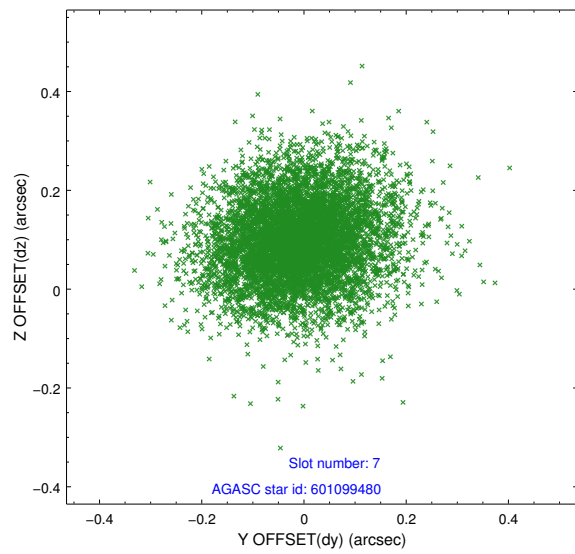
### 2.4.3 Slot 5



## 2.4.4 Slot 6



## 2.4.5 Slot 7

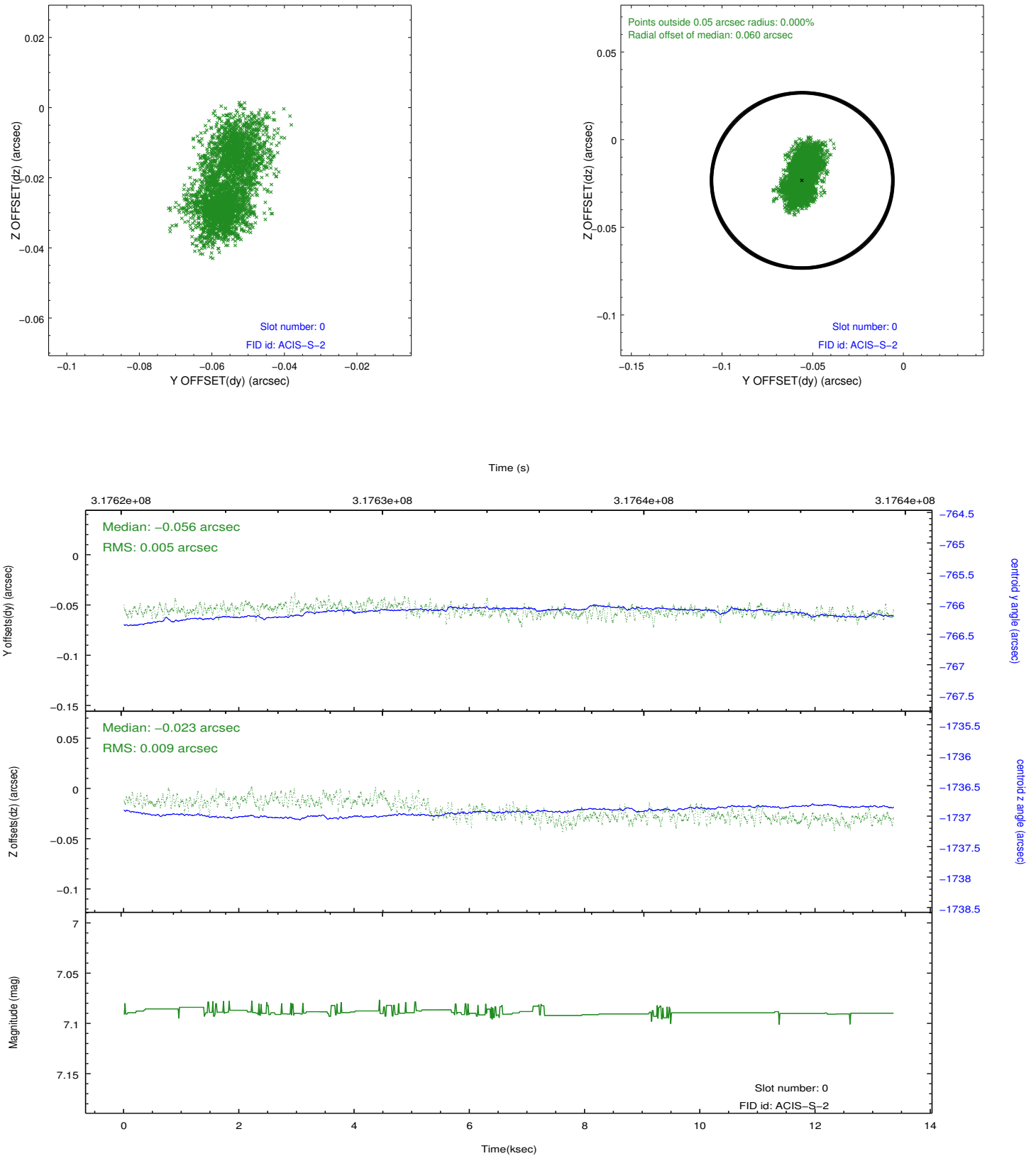


Time (s)

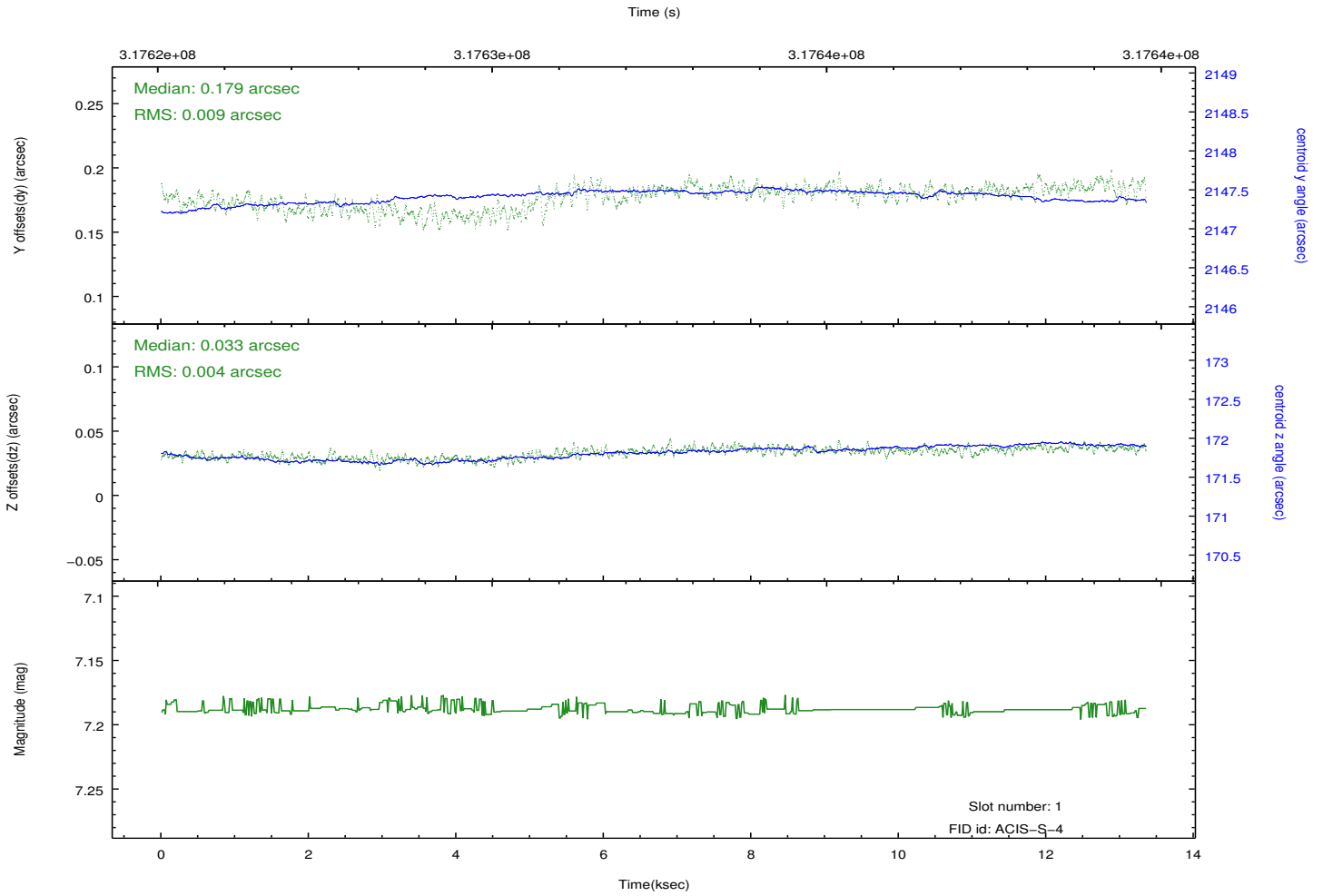
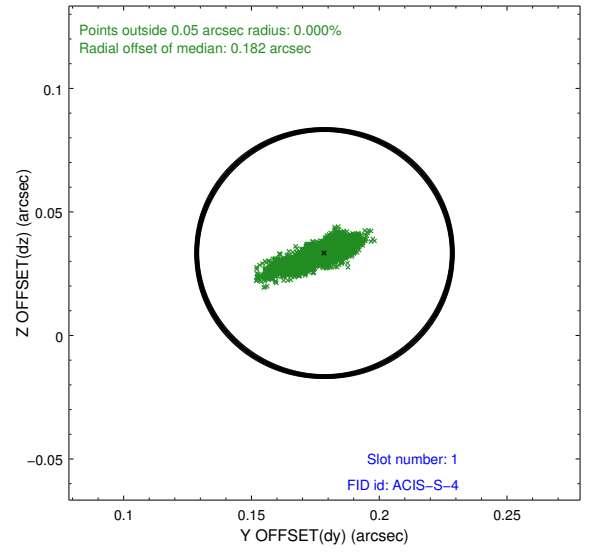
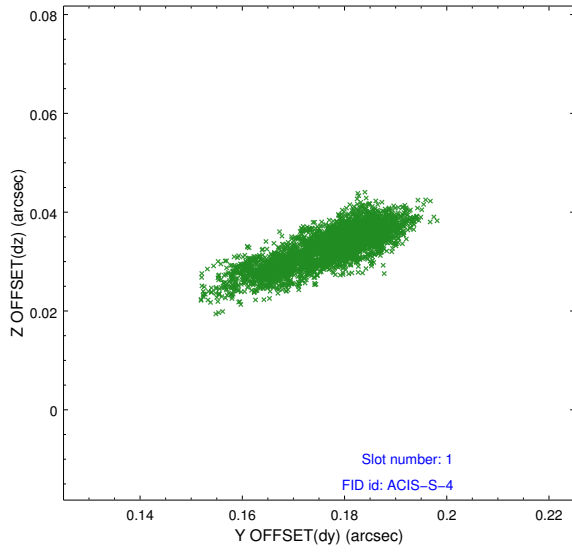


## 2.5 FID Slots

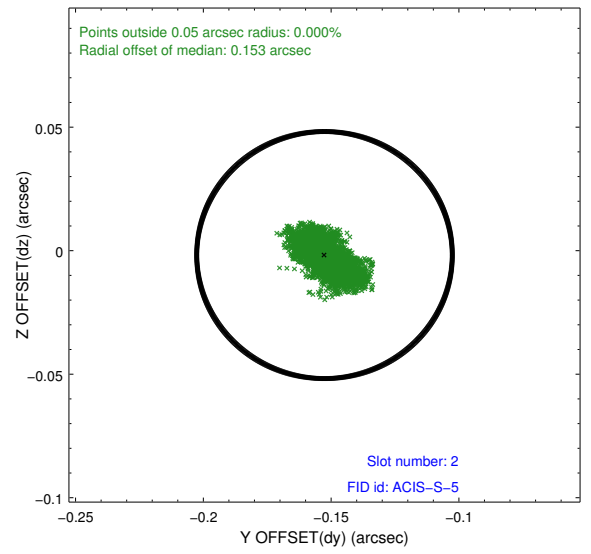
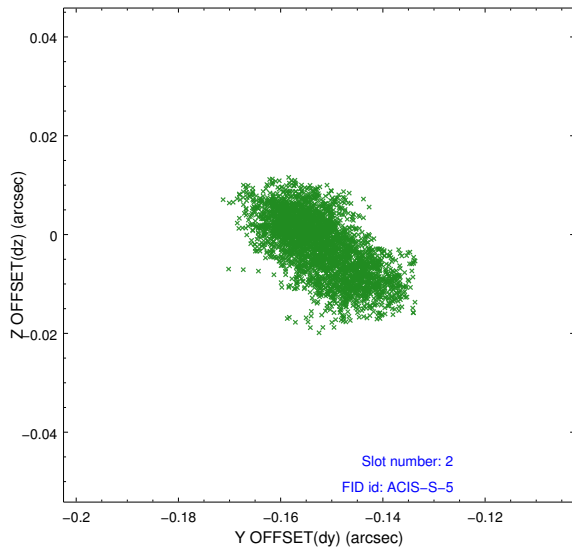
### 2.5.1 Slot 0



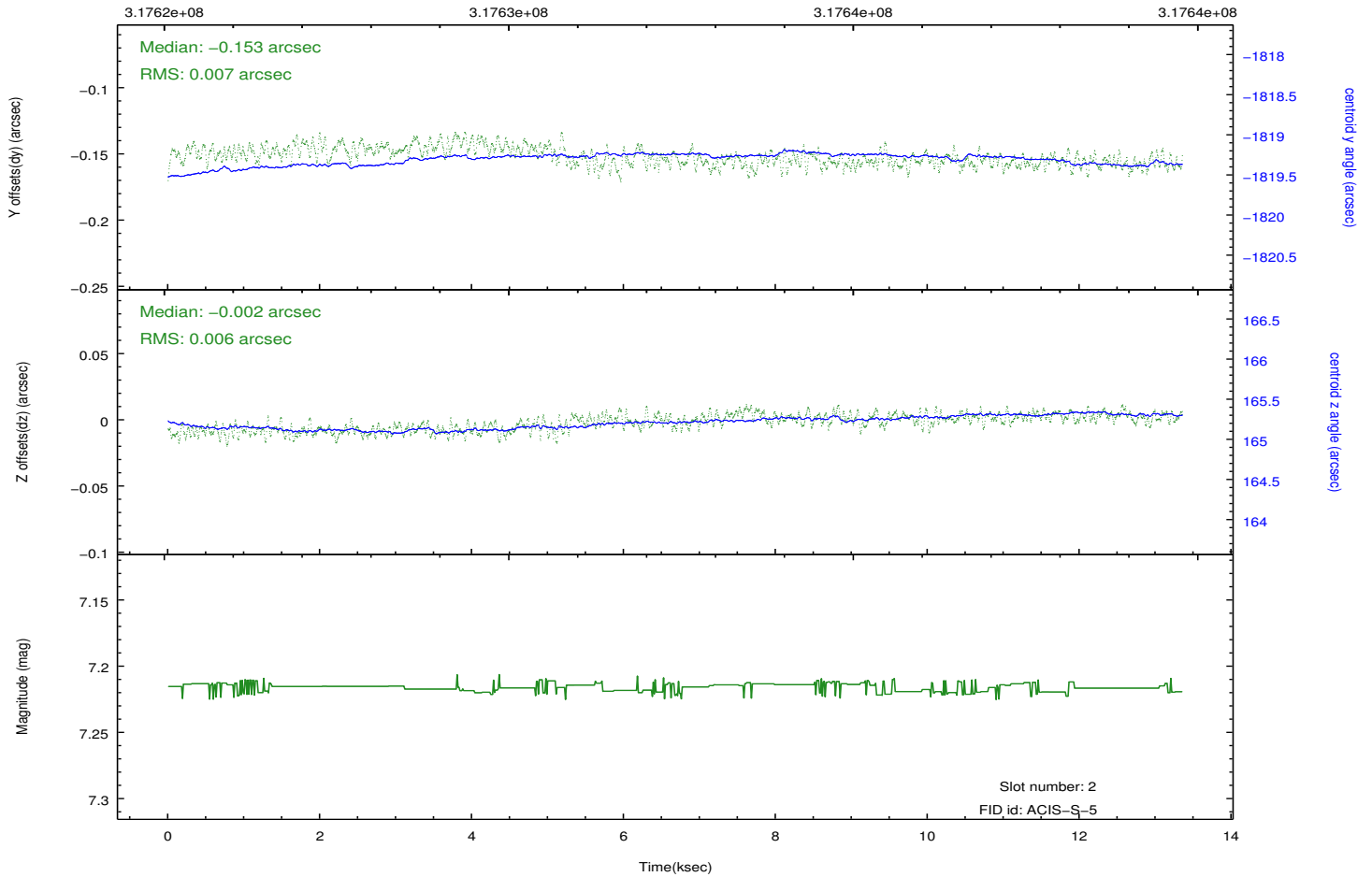
## 2.5.2 Slot 1



### 2.5.3 Slot 2



Time (s)



# A Summary

## A.1 Status

V&V Scientist	Jen Lauer
V&V Date (YYYY-MM-DD)	2012.05.10
V&V Edition	1
V&V Disposition and Status	OK
V&V Charge Time	13.0293001

## A.2 Comments