

V&V Reference Report

L2 ASCDS Version : 8.4.5

Observation 10531 - L2 Version 2
Chandra X-Ray Center

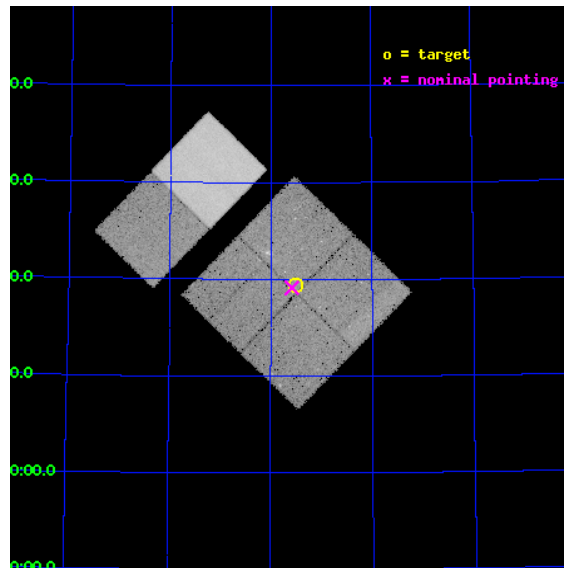
L2 Processing Date : Jun 7 2012

Contents

1	Front	2
2	OBI	3
2.1	OBI	3
2.1.1	Images	3
2.1.2	Bias	3
2.1.3	Parameters	4
2.1.4	Events	4
2.2	Compared Parameters	5
2.3	Aspect	6
2.4	Star Slots	9
2.4.1	Slot 3	9
2.4.2	Slot 4	10
2.4.3	Slot 5	11
2.4.4	Slot 6	12
2.4.5	Slot 7	13
2.5	FID Slots	14
2.5.1	Slot 0	14
2.5.2	Slot 1	15
2.5.3	Slot 2	16
A	Summary	17
A.1	Status	17
A.2	Comments	17

1 Front

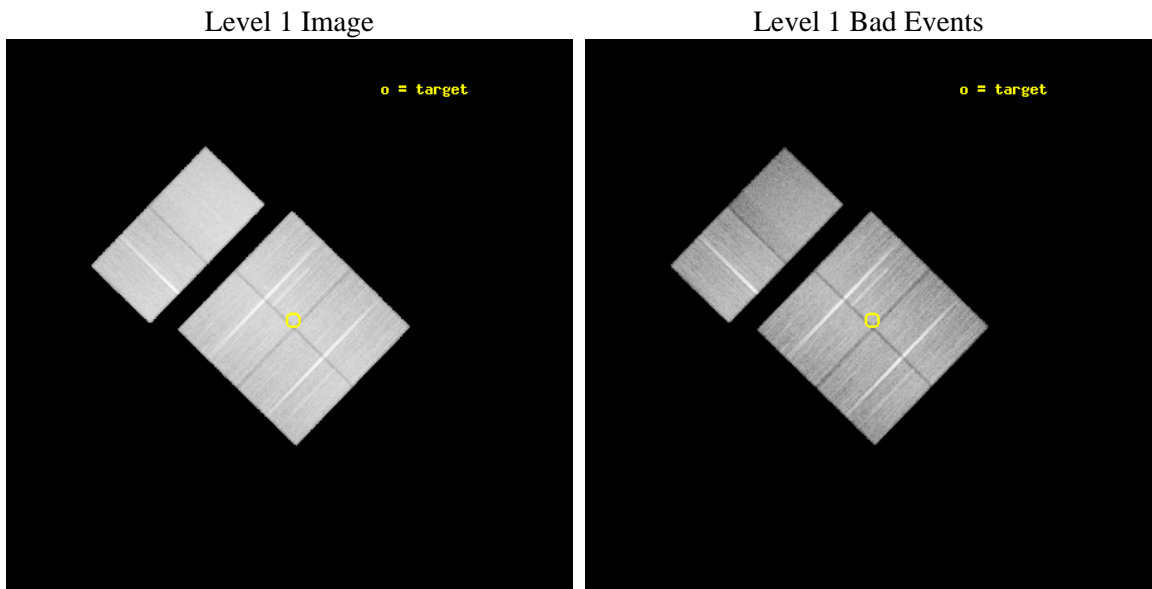
seq_num	600724	Sequence number
obs_id	10531	Observation id
title	The Baryons Content of the Most Massive Spiral Galaxy	Proposal tit
observer	Dr. Joel Bregman	Principal investigator
object	NGC 1961	Source name
dtcycle	0	
cycle	P	events from which exps? Prim/Second/Both
ra_targ	85.375613	Observer's specified target RA [deg]
dec_targ	69.322707	Observer's specified target Dec [deg]
ra_nom	85.395729900961	Nominal RA [deg]
dec_nom	69.318826843551	Nominal Dec [deg]
roll_nom	314.18986674408	Nominal Roll [deg]
revision	2	Processing version of data
ontime	33253.520585656	Sum of GTIs [s]
liveltime	32832.444485134	Livetime [s]
ontime0	33253.397485554	Sum of GTIs [s]
ontime1	33250.197535276	Sum of GTIs [s]
ontime2	33253.479595423	Sum of GTIs [s]
ontime3	33253.520585656	Sum of GTIs [s]
ontime6	33253.602715552	Sum of GTIs [s]
ontime7	33256.802615881	Sum of GTIs [s]
l2events	267720	Number of level 2 events



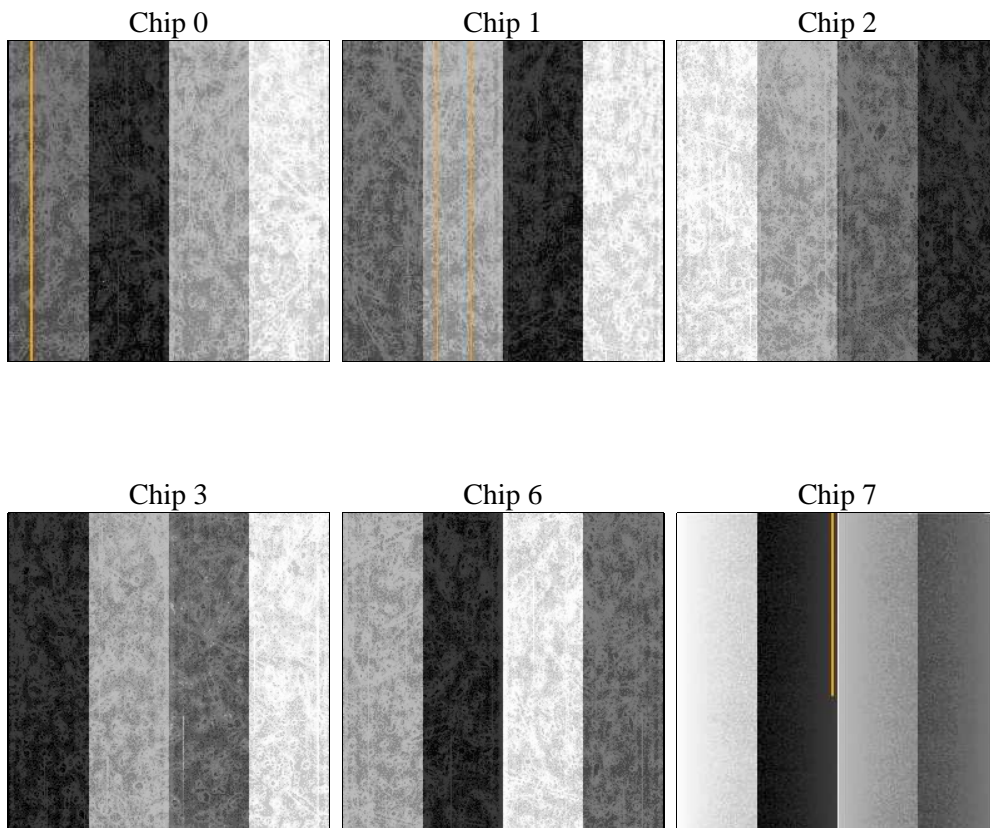
2 OBI

2.1 OBI

2.1.1 Images



2.1.2 Bias



2.1.3 Parameters

obi_num	0	Obi number	sched_exp_time	33500.000000	[s] Scheduled observation exposure time
ascdsver	8.4.5	Processing system revision	ontime	33253.520585656	Sum of GTIs [s]
caldbver	4.4.10	 	ontime0	33253.397485554	Sum of GTIs [s]
date	2012-06-07T00:35:42	Date and time of file creation	ontime1	33250.197535276	Sum of GTIs [s]
revision	2	Processing version of data	ontime2	33253.479595423	Sum of GTIs [s]
			ontime3	33253.520585656	Sum of GTIs [s]
			ontime6	33253.602715552	Sum of GTIs [s]
			ontime7	33256.802615881	Sum of GTIs [s]
			l1events	1731989	Number of level 1 events

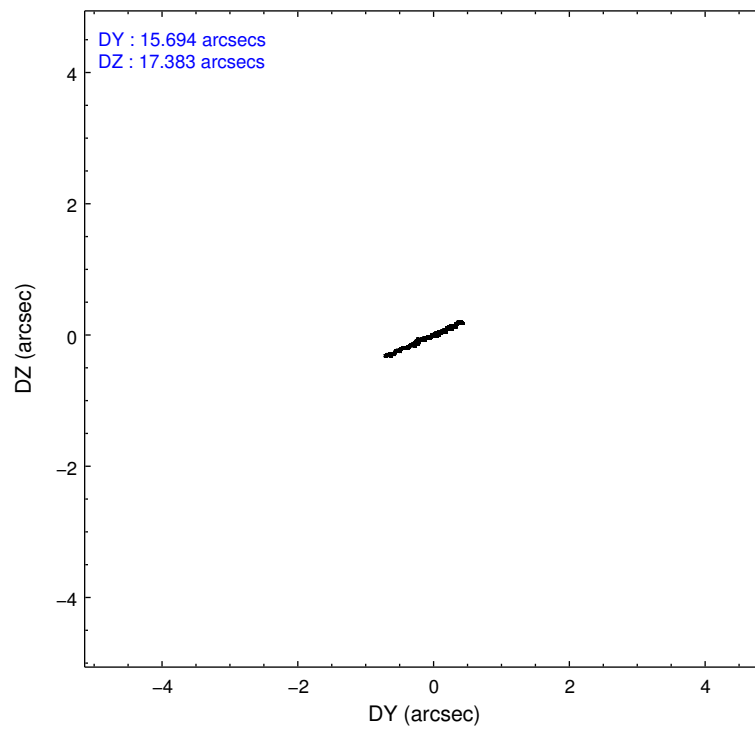
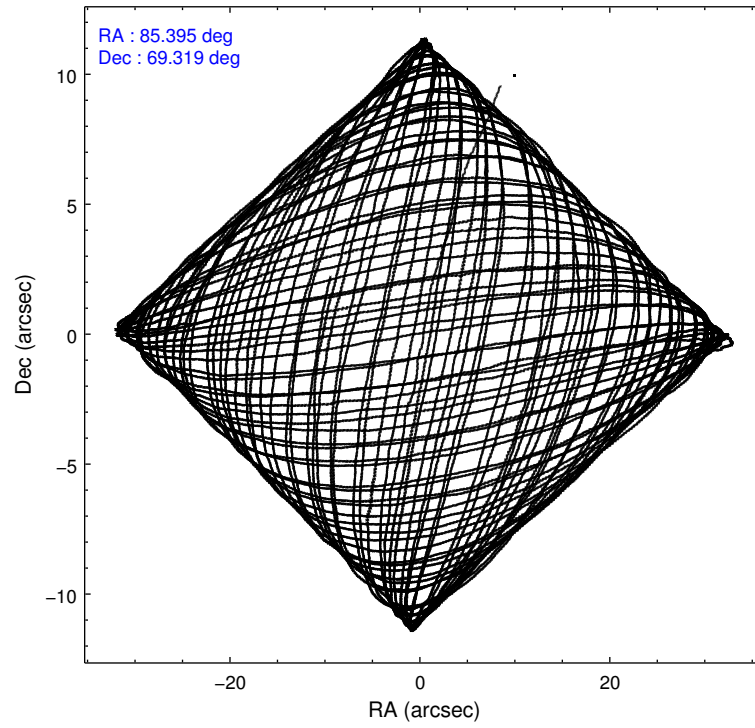
2.1.4 Events

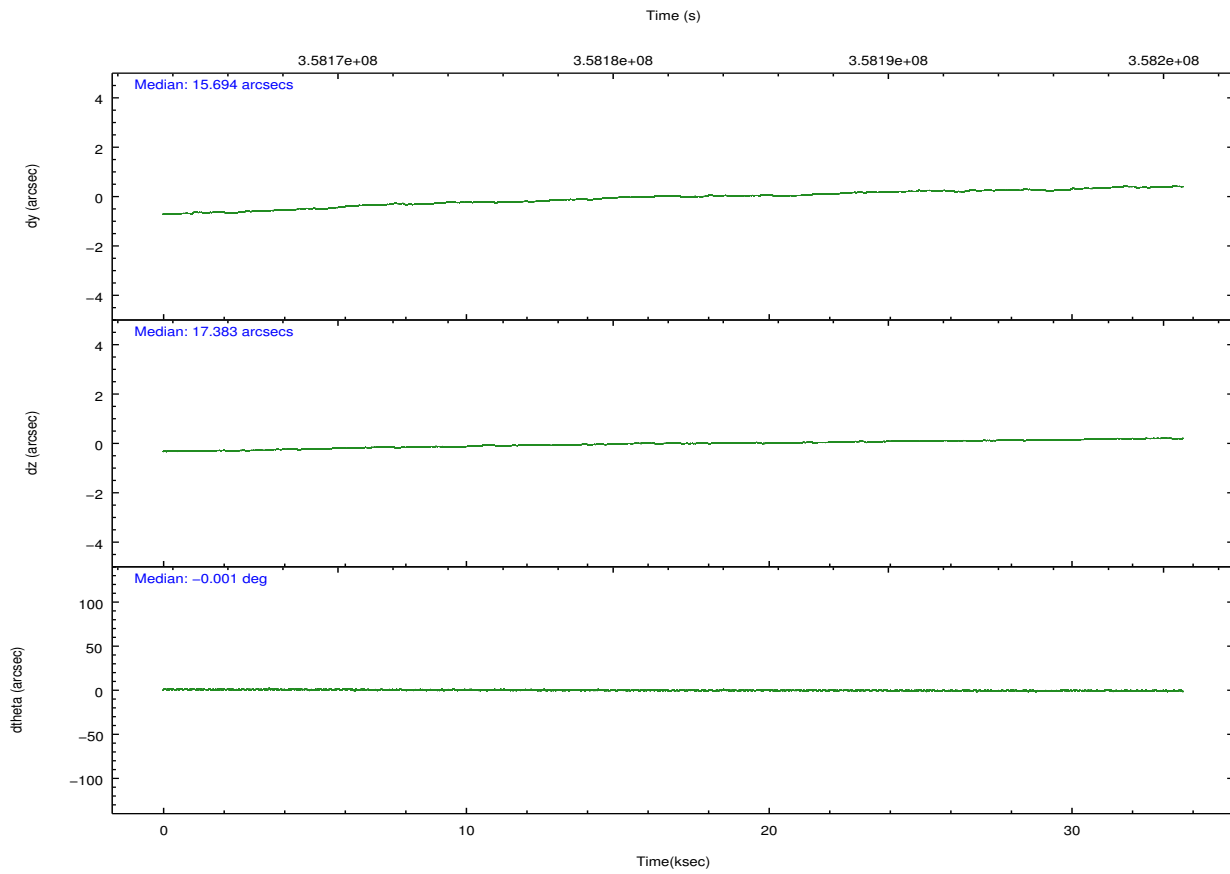
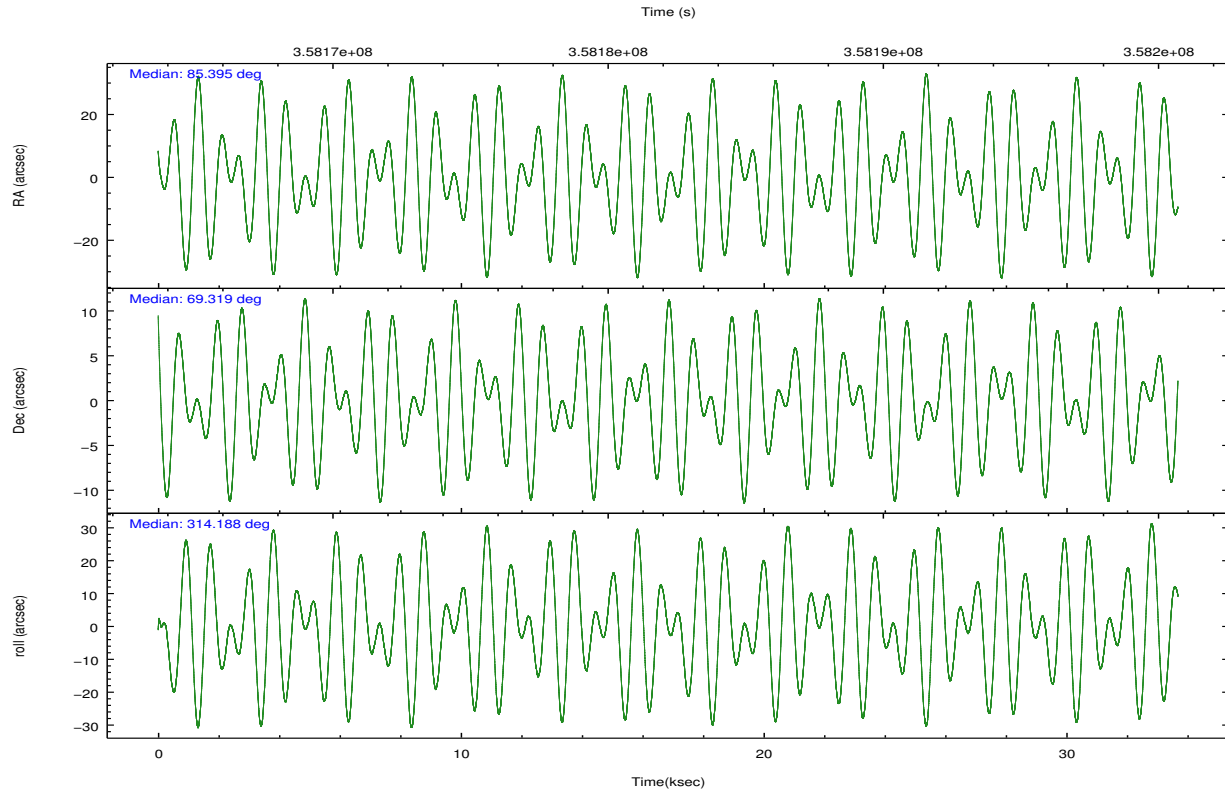
	ccd 0	ccd 1	ccd 2	ccd 3	ccd 6	ccd 7		ccd 0	ccd 1	ccd 2	ccd 3	ccd 6	ccd 7
level 1 events	265776	266075	297492	285873	290800	325973	grade 0 events	9963	11764	10353	10820	10194	13540
rejected events	236981	233450	268904	257159	260634	177782		3%	4%	3%	3%	3%	4%
rejected %	89%	87%	90%	89%	89%	54%	grade 1 events	164	130	187	168	166	453
								0%	0%	0%	0%	0%	0%
							grade 2 events	7177	7508	6966	6255	7067	30320
								2%	2%	2%	2%	2%	9%
							grade 3 events	3121	3442	2926	3169	3196	13682
								1%	1%	0%	1%	1%	4%
							grade 4 events	2995	3407	2988	3000	3065	13189
								1%	1%	1%	1%	1%	4%
							grade 5 events	10386	10955	9768	11801	12104	34639
								3%	4%	3%	4%	4%	10%
							grade 6 events	5544	6517	5361	5476	6651	77494
								2%	2%	1%	1%	2%	23%
							grade 7 events	226426	222352	258943	245184	248357	142656
								85%	83%	87%	85%	85%	43%

2.2 Compared Parameters

Parameter	Planned	Actual	Parameter	Planned	Actual
Instrument	ACIS	ACIS	Obspar format version number	7	7
Detector	ACIS-012367	ACIS-012367	Obspar file type	PREDICTED	ACTUAL
Grating	NONE	NONE	Obspar update status	NONE	UPDATED
Data mode	VFAINT	VFAINT	CCD I0 on	Y	Y
Observation mode	POINTING	POINTING	CCD I1 on	Y	Y
[deg] Pointing RA	85.320707	85.3957299009607	CCD I2 on	Y	Y
[deg] Pointing Dec	69.326205	69.31882684355111	CCD I3 on	Y	Y
[deg] Pointing Roll	314.051379	314.1898667440782	CCD S0 on	N	N
[mm] SIM focus pos	-0.782348	-0.7809083437167272	CCD S1 on	N	N
[mm] SIM defocus	0	0.001439871863259334	CCD S2 on	O1	Y
[mm] SIM translation stage pos	-233.592463	-233.5874344608287	CCD S3 on	Y	Y
[mm] SIM translation stage offset	0	-0.005018542100998502	CCD S4 on	N	N
[s] Observation start time (MET)	358165508.184000	358164650.66929	CCD S5 on	N	N
Observation start date	2009-05-08T10:24:02	2009-05-08T10:10:50	Number of optional ACIS chips dropped	0	0
[s] Observation end time (MET)	358199008.184000	358199142.43351	On-chip summing requested	N	N
Observation end date	2009-05-08T19:42:22	2009-05-08T19:45:42	Subarray requested	NONE	NONE
Read mode	TIMED	TIMED	Alternating exposures requested	N	N
			[s] Primary exposure time	0.000000	3.2

2.3 Aspect



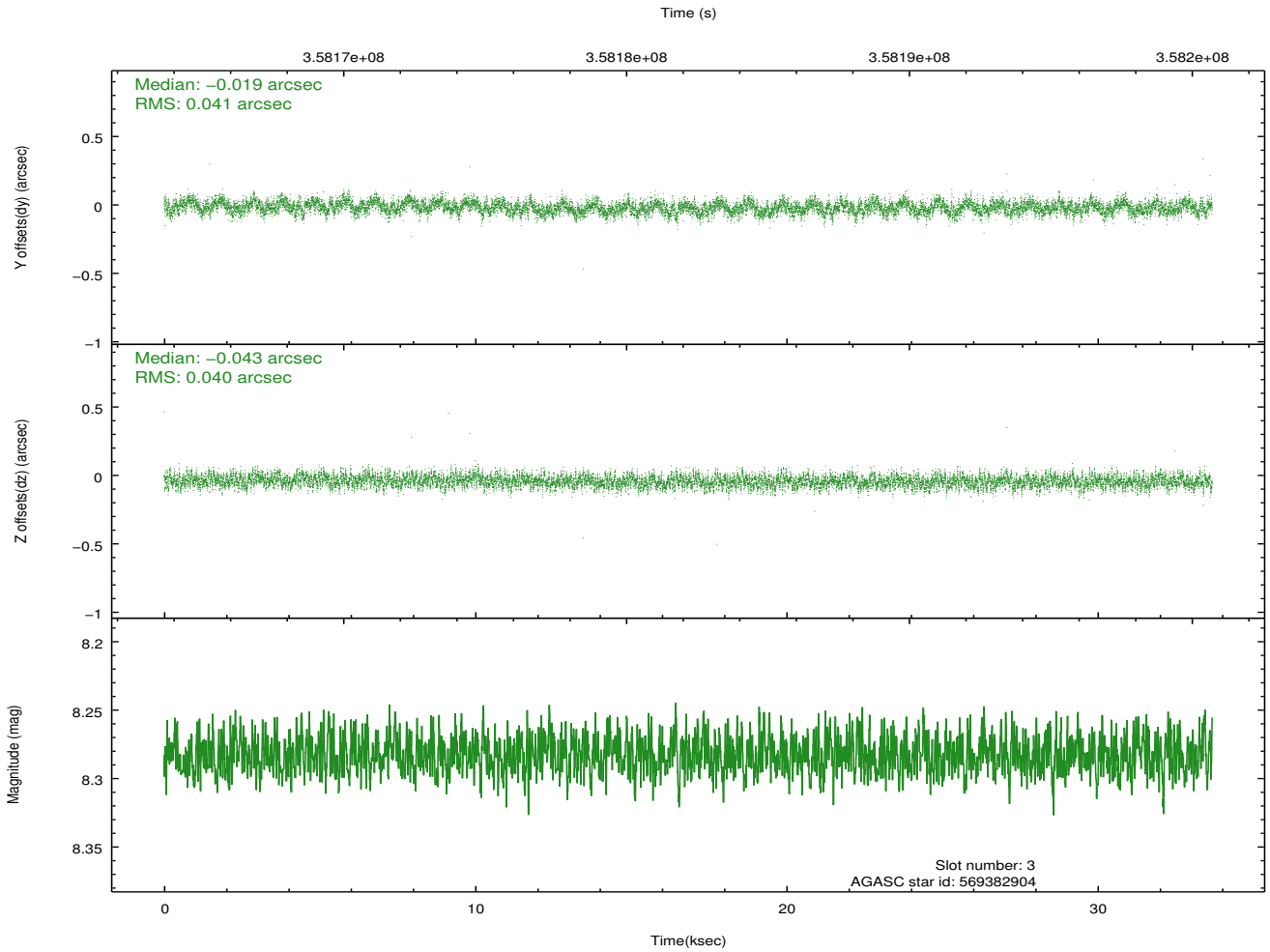
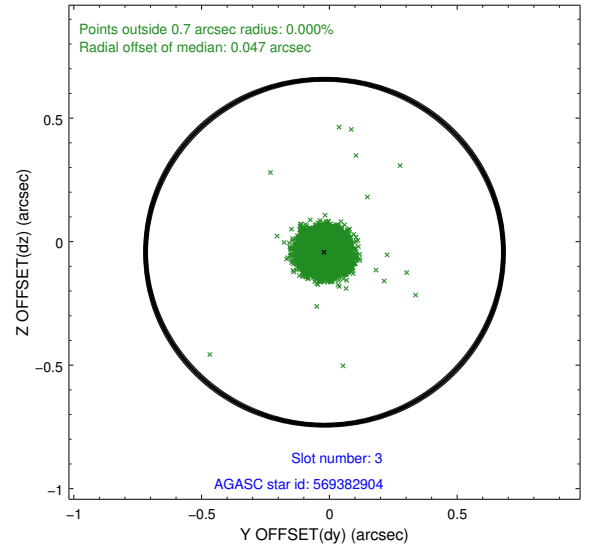
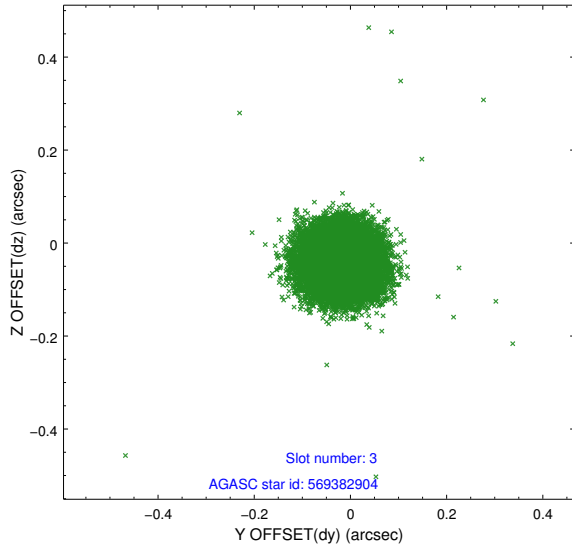


Slot Statistics

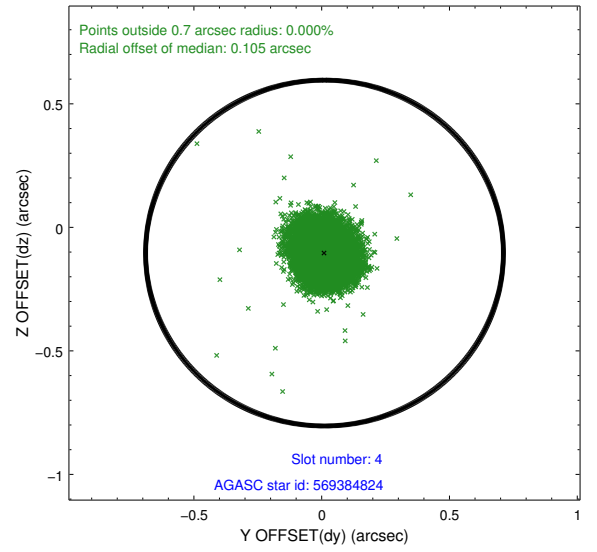
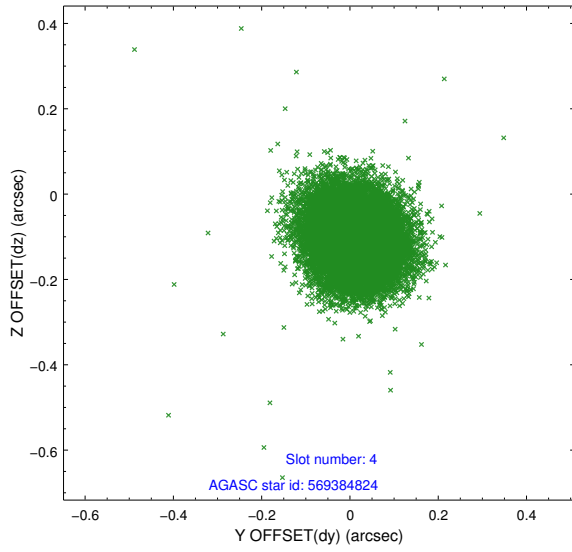
slot	status	id	mag	n_pts	med_dy	med_dz	dr1	dr2	ra	dec	mean_y	mean_z
0	FID	ACIS-I-1	7.02	8215	0.040	0.014	0.017	0.038	0.000000	0.000000	923.85	-841.01
1	FID	ACIS-I-5	7.02	8214	-0.187	0.058	0.013	0.028	0.000000	0.000000	-1824.45	1056.53
2	FID	ACIS-I-6	7.03	8213	0.055	0.000	0.011	0.020	0.000000	0.000000	389.38	1701.01
3	GUIDE	569382904	8.28	16424	-0.019	-0.043	0.060	0.096	86.395503	69.273356	1080.44	860.41
4	GUIDE	569384824	9.34	16415	0.011	-0.104	0.085	0.139	86.214875	69.095669	1389.41	254.45
5	GUIDE	569385320	8.14	16420	0.154	-0.021	0.062	0.100	84.115590	69.098544	-496.89	-1671.77
6	GUIDE	569907016	6.83	16427	-0.185	0.080	0.054	0.094	85.055781	69.981849	-1923.92	1407.10
7	GUIDE	569775360	8.83	16419	0.035	0.090	0.077	0.125	83.824614	69.708320	-2303.45	-369.73

2.4 Star Slots

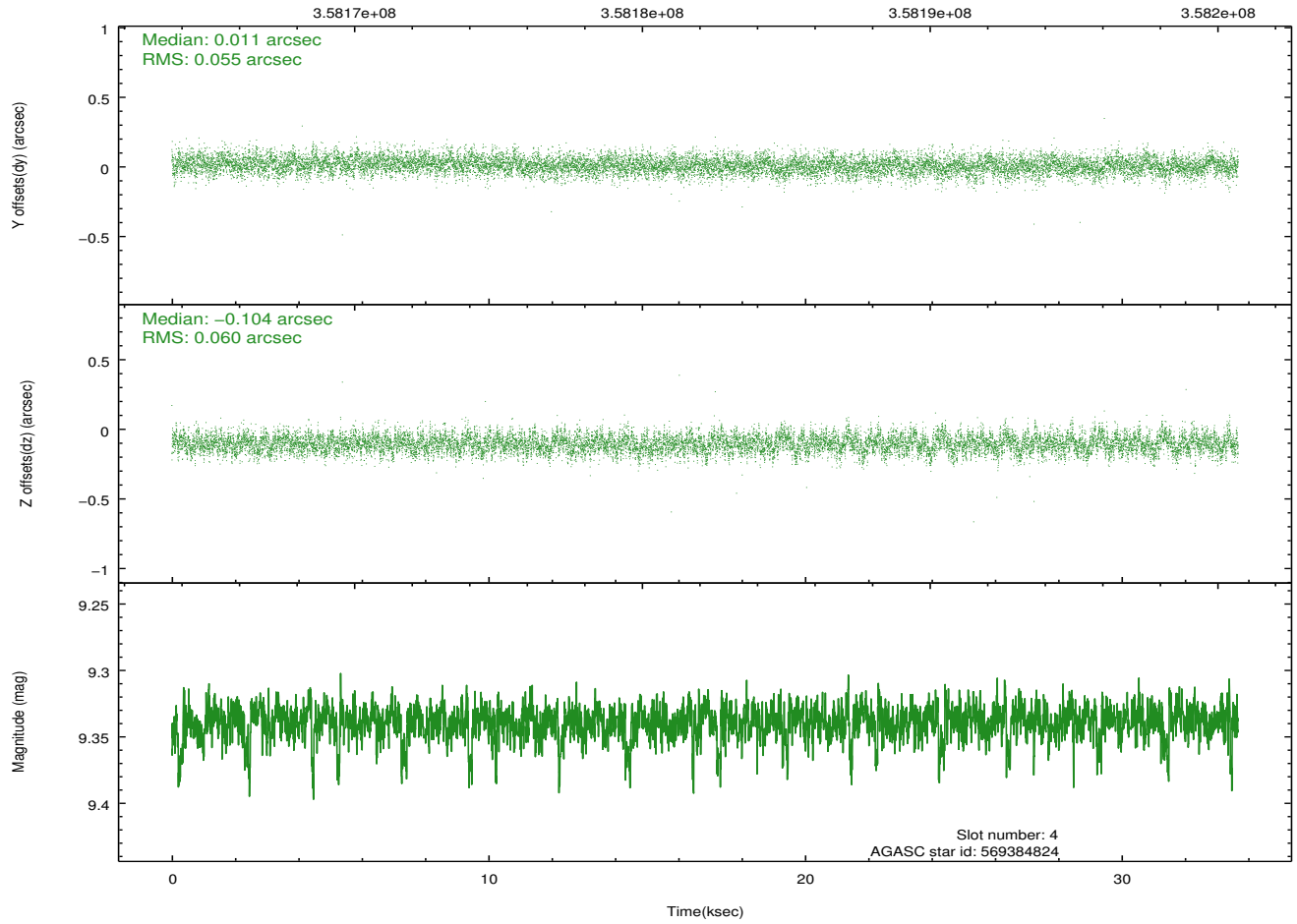
2.4.1 Slot 3



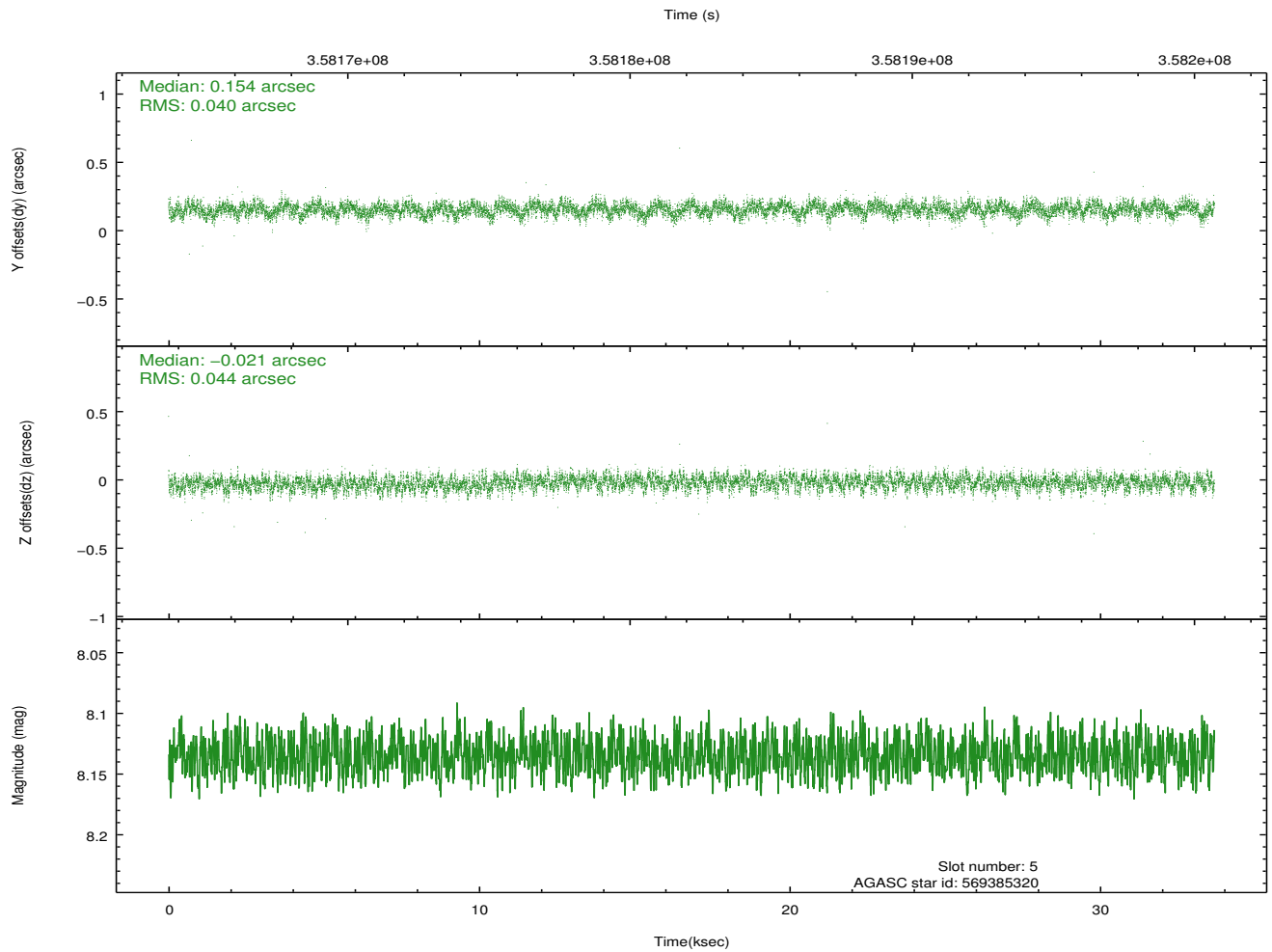
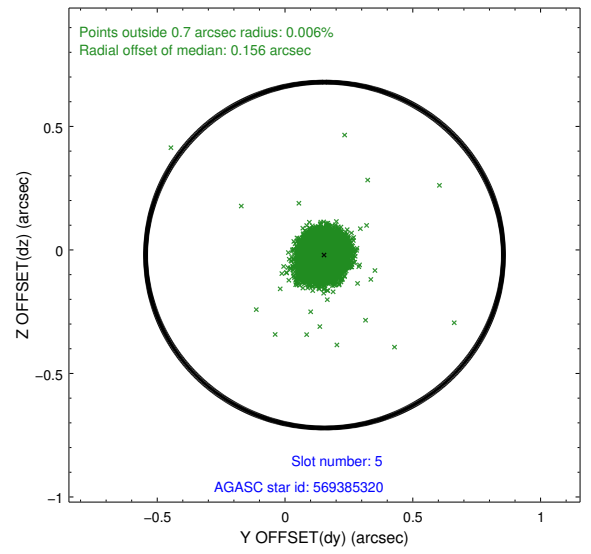
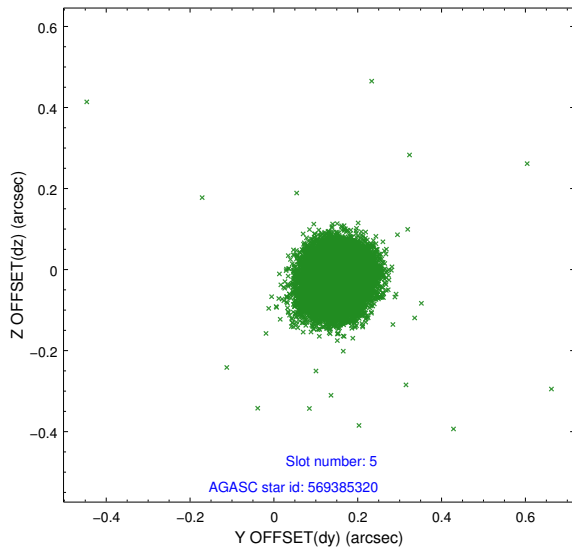
2.4.2 Slot 4



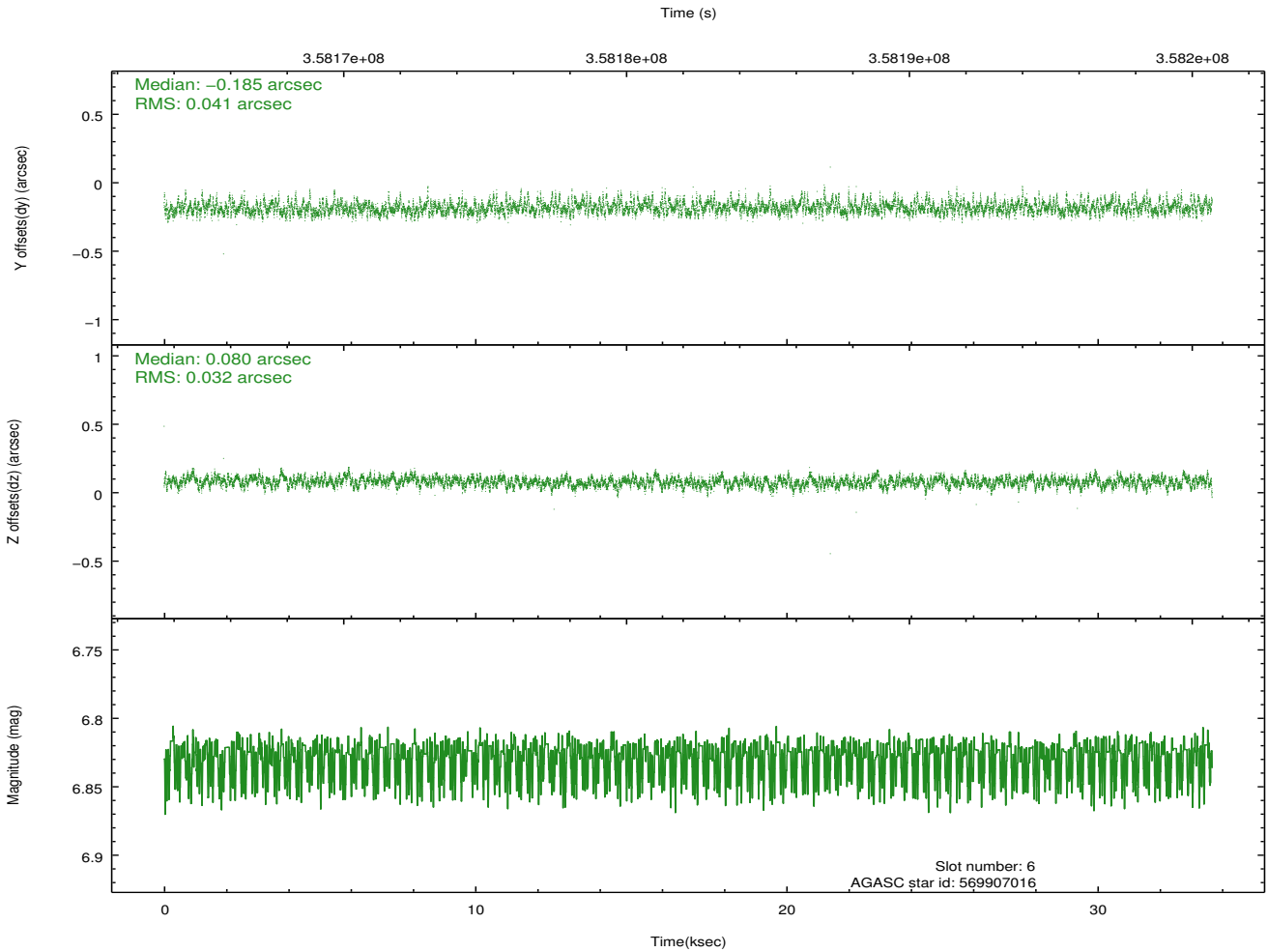
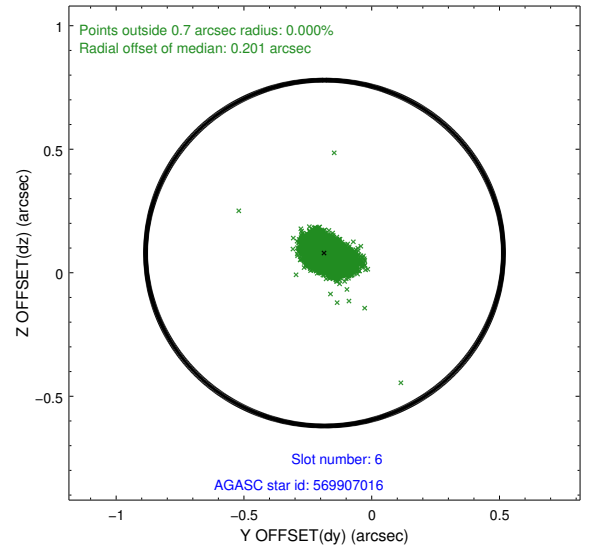
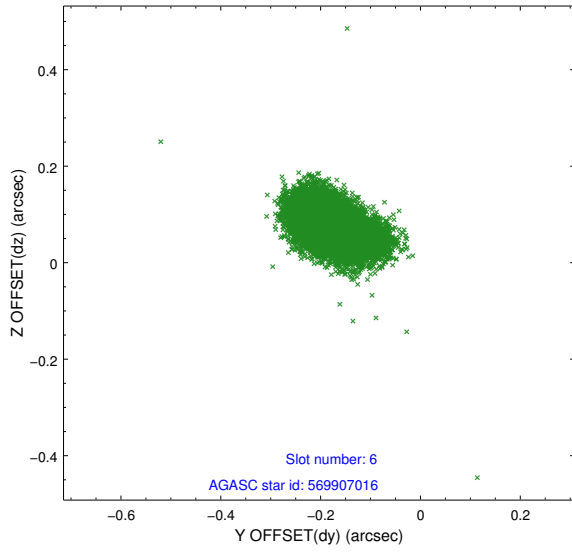
Time (s)



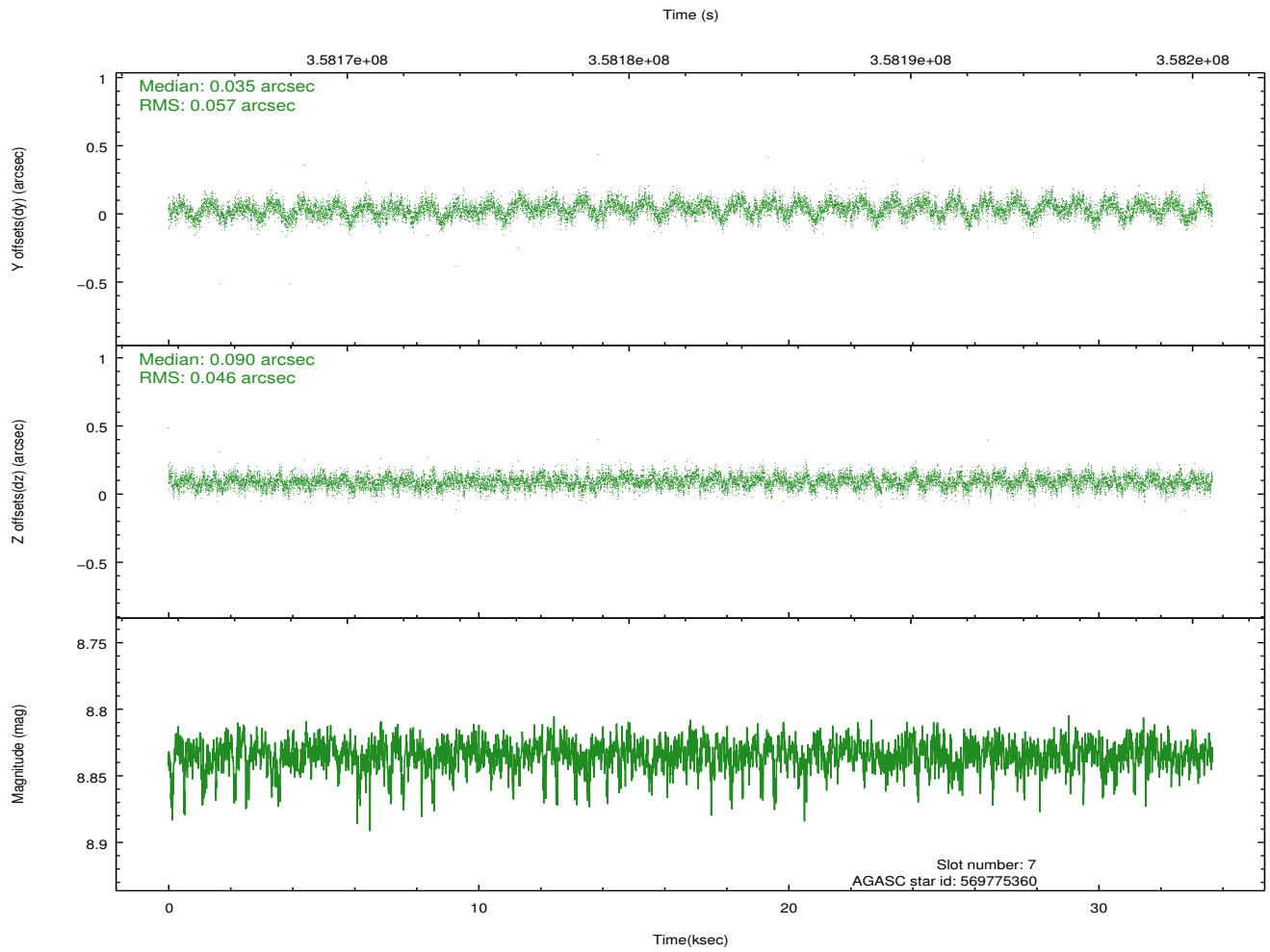
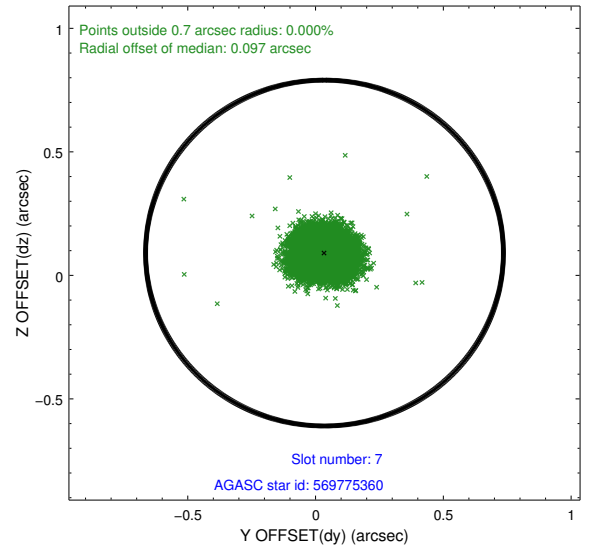
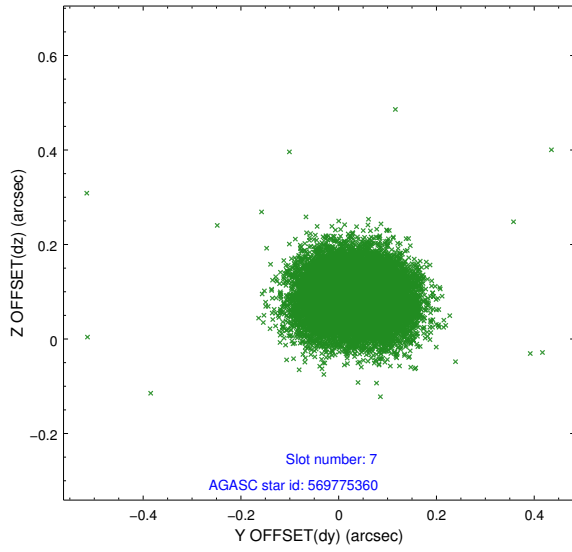
2.4.3 Slot 5



2.4.4 Slot 6

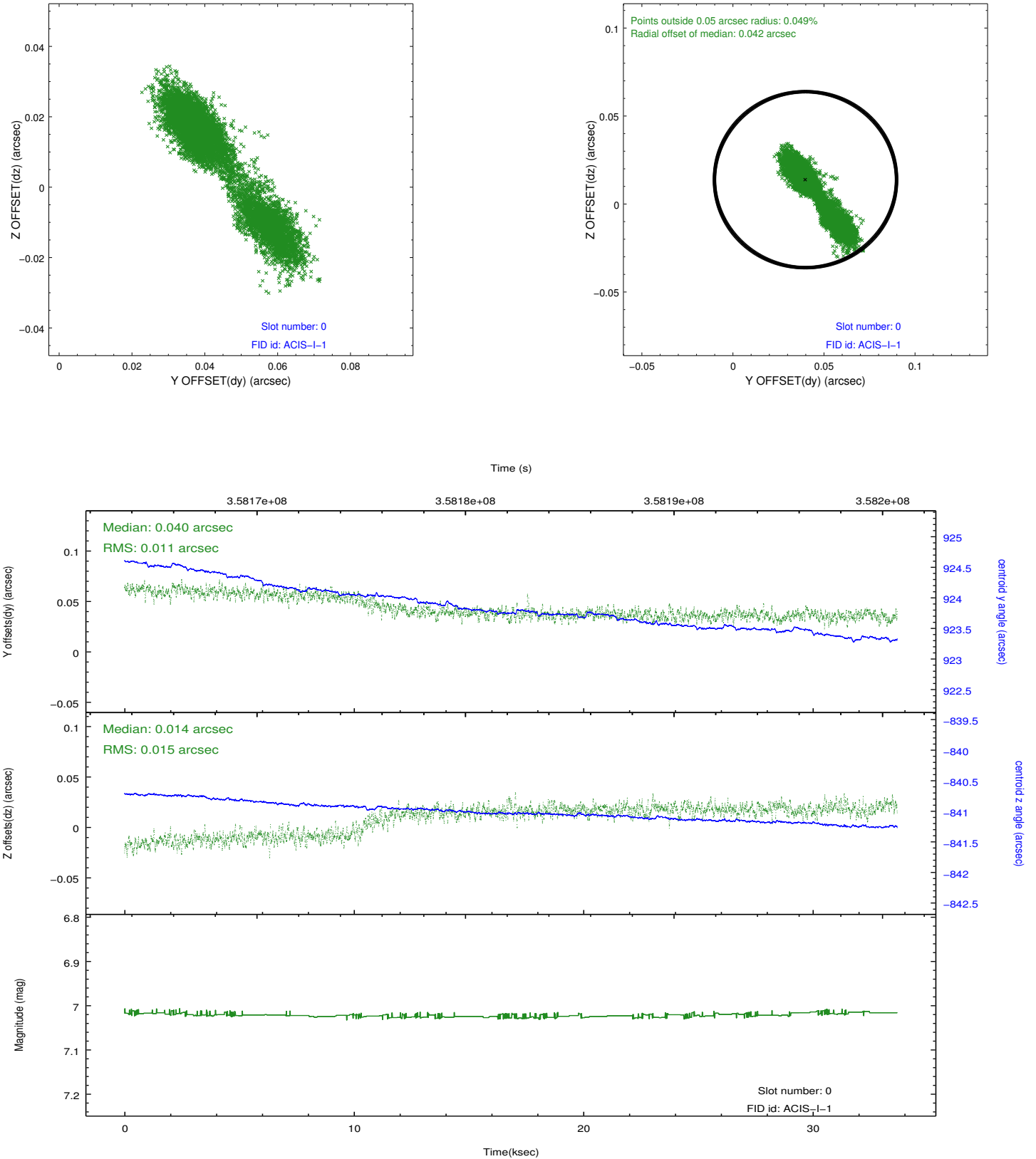


2.4.5 Slot 7

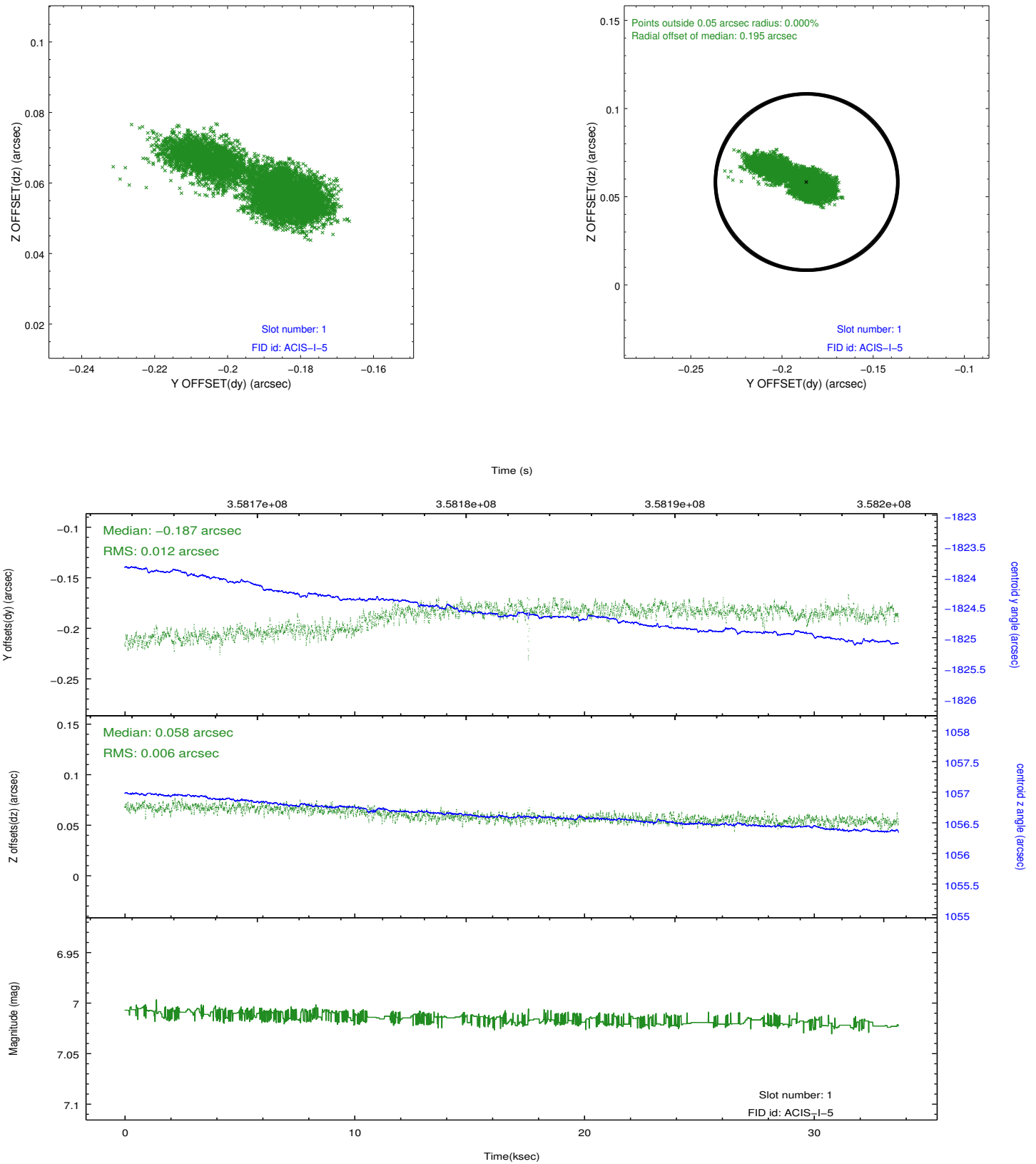


2.5 FID Slots

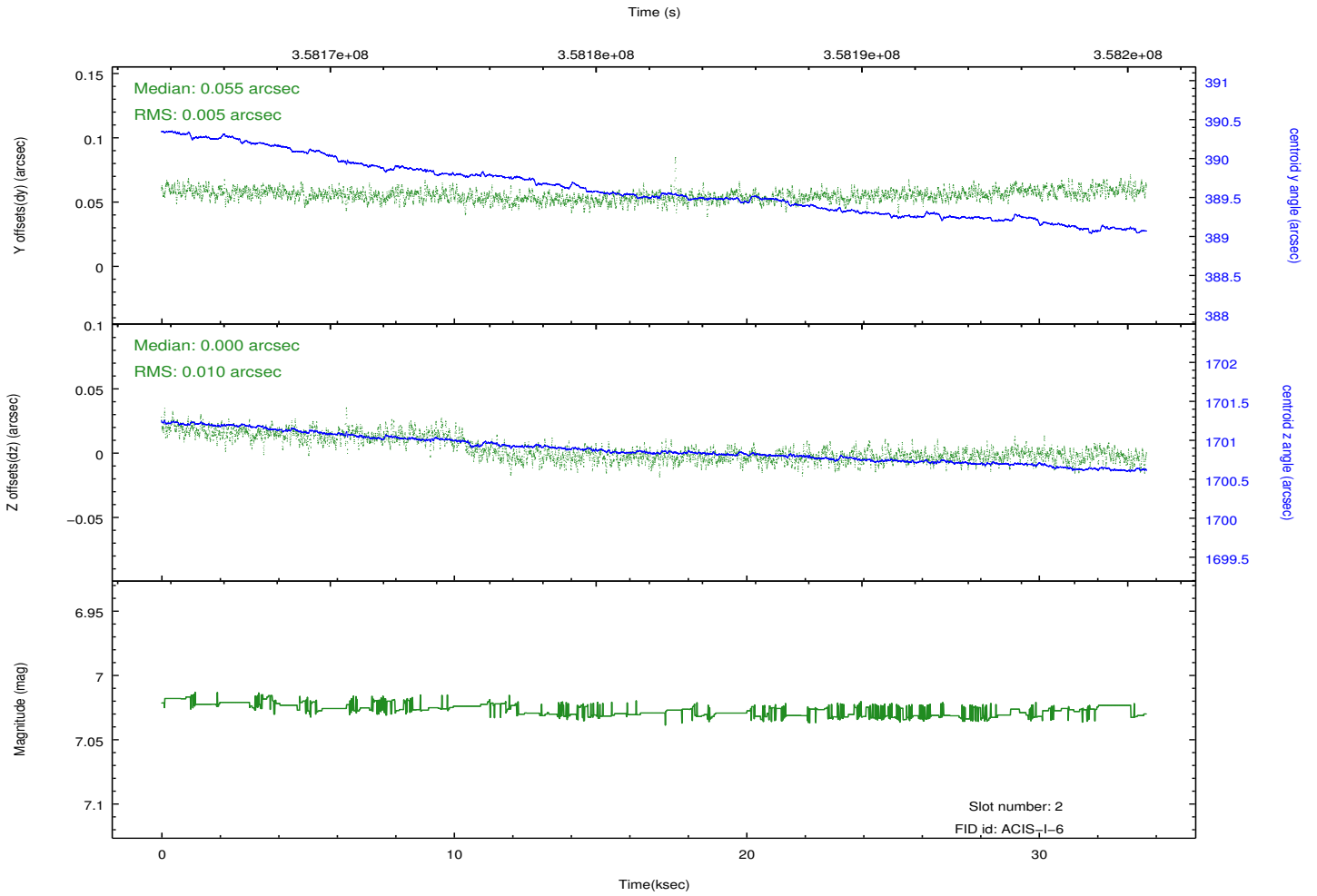
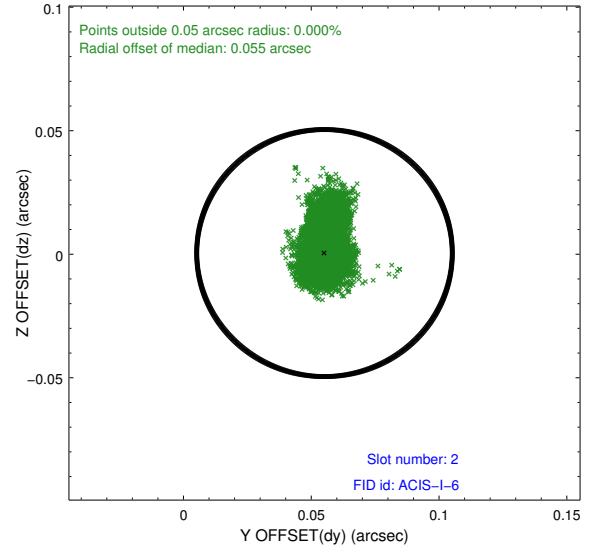
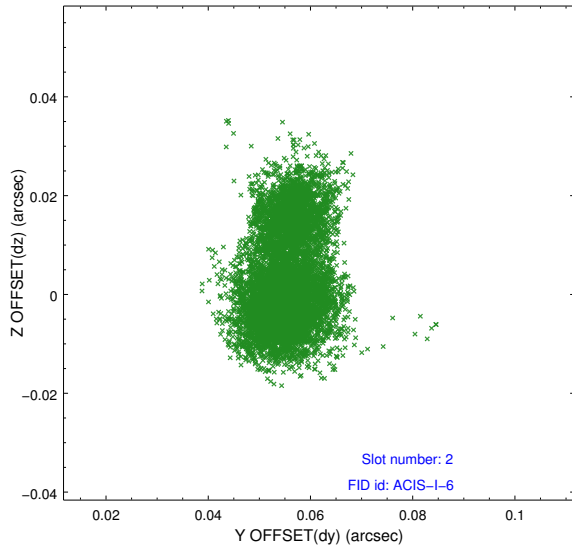
2.5.1 Slot 0



2.5.2 Slot 1



2.5.3 Slot 2



A Summary

A.1 Status

V&V Scientist	Jen Lauer
V&V Date (YYYY-MM-DD)	2012.06.11
V&V Edition	1
V&V Disposition and Status	OK
V&V Charge Time	33.2543588

A.2 Comments