

V&V Reference Report

L2 ASCDS Version : 8.4.5

Observation 10911 - L2 Version 2
Chandra X-Ray Center

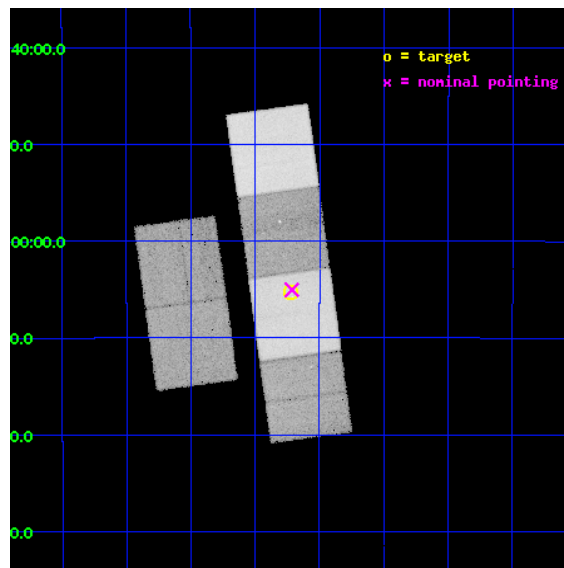
L2 Processing Date : Jun 7 2012

Contents

1	Front	2
2	OBI	3
2.1	OBI	3
2.1.1	Images	3
2.1.2	Bias	3
2.1.3	Parameters	4
2.1.4	Events	4
2.2	Compared Parameters	5
2.3	Aspect	6
2.4	Star Slots	9
2.4.1	Slot 3	9
2.4.2	Slot 4	10
2.4.3	Slot 5	11
2.4.4	Slot 6	12
2.4.5	Slot 7	13
2.5	FID Slots	14
2.5.1	Slot 0	14
2.5.2	Slot 1	15
2.5.3	Slot 2	16
A	Summary	17
A.1	Status	17
A.2	Comments	17

1 Front

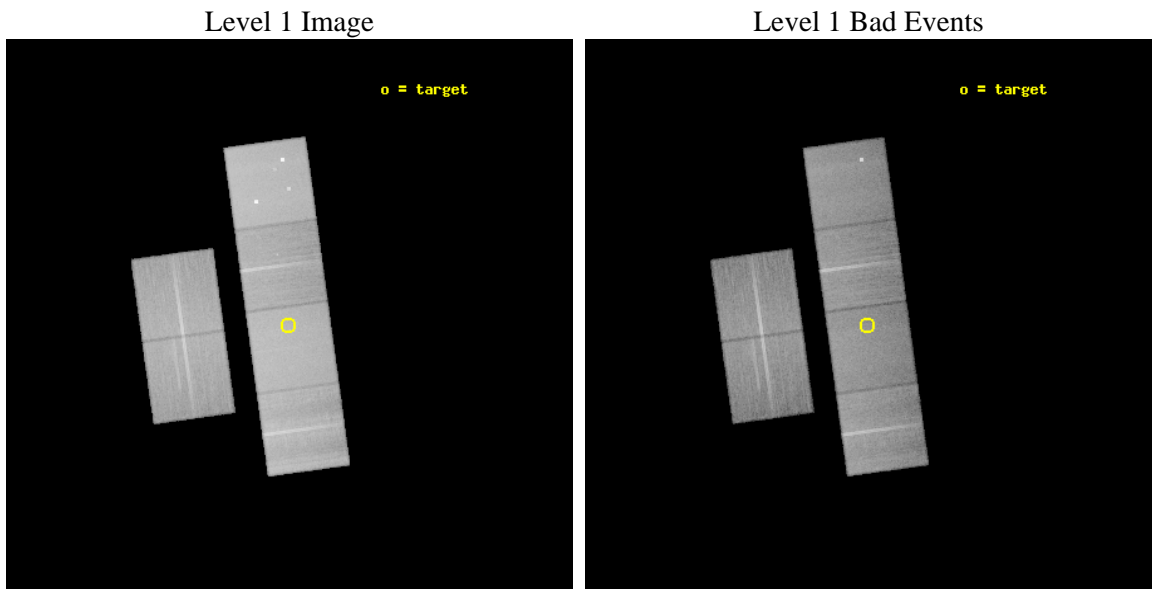
seq_num	401001	Sequence number
obs_id	10911	Observation id
title	Crustal cooling in the neutron star KS 1731-260	Proposal title
observer	Dr Edward Cackett	Principal investigator
object	KS 1731-260	Source name
dtcycle	0	
cycle	P	events from which exps? Prim/Second/Both
ra_targ	263.555833	Observer's specified target RA [deg]
dec_targ	-26.088528	Observer's specified target Dec [deg]
ra_nom	263.55365422729	Nominal RA [deg]
dec_nom	-26.084098908579	Nominal Dec [deg]
roll_nom	82.155673403238	Nominal Roll [deg]
revision	2	Processing version of data
ontime	27921.885679781	Sum of GTIs [s]
livetime	27568.321950763	Livetime [s]
ontime2	27921.926719785	Sum of GTIs [s]
ontime3	27918.521568954	Sum of GTIs [s]
ontime5	27921.844639778	Sum of GTIs [s]
ontime6	27921.803599775	Sum of GTIs [s]
ontime7	27921.885679781	Sum of GTIs [s]
ontime8	27918.480519056	Sum of GTIs [s]
l2events	497604	Number of level 2 events



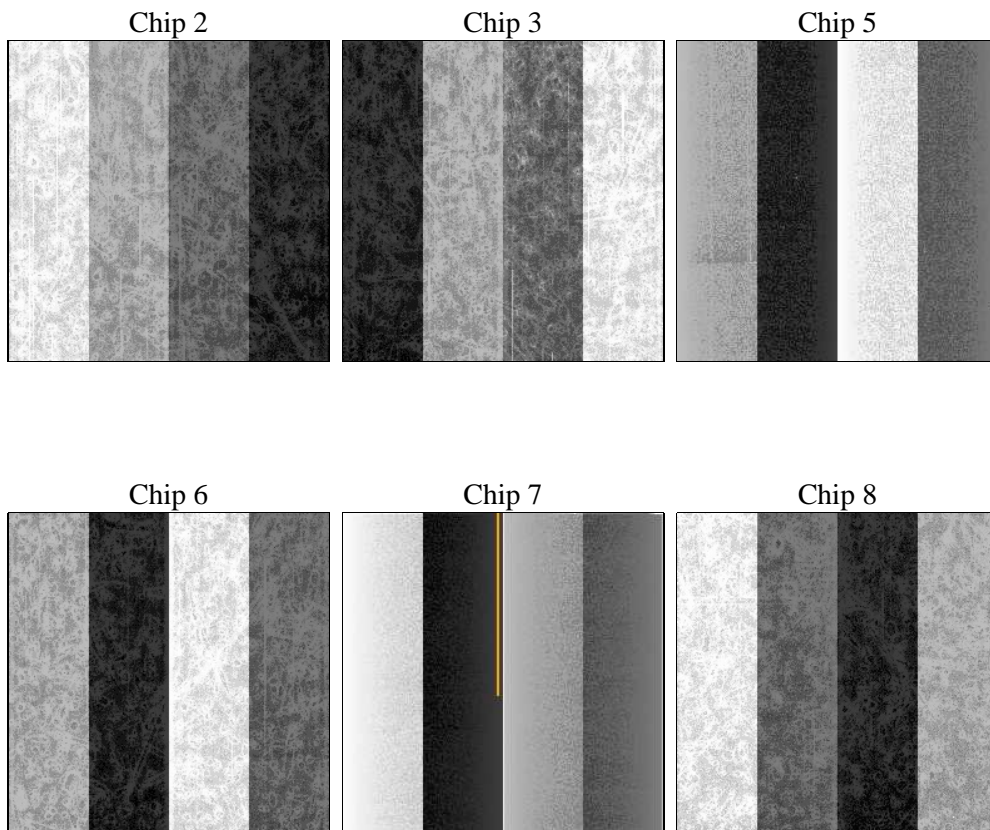
2 OBI

2.1 OBI

2.1.1 Images



2.1.2 Bias



2.1.3 Parameters

obi_num	0	Obi number	sched_exp_time	27976.595000	[s] Scheduled observation exposure time
ascdsver	8.4.5	Processing system revision	ontime	27921.885679781	Sum of GTIs [s]
caldbver	4.4.10	 	ontime2	27921.926719785	Sum of GTIs [s]
date	2012-06-07T16:20:02	Date and time of file creation	ontime3	27918.521568954	Sum of GTIs [s]
revision	2	Processing version of data	ontime5	27921.844639778	Sum of GTIs [s]
			ontime6	27921.803599775	Sum of GTIs [s]
			ontime7	27921.885679781	Sum of GTIs [s]
			ontime8	27918.480519056	Sum of GTIs [s]
			l1events	2147711	Number of level 1 events

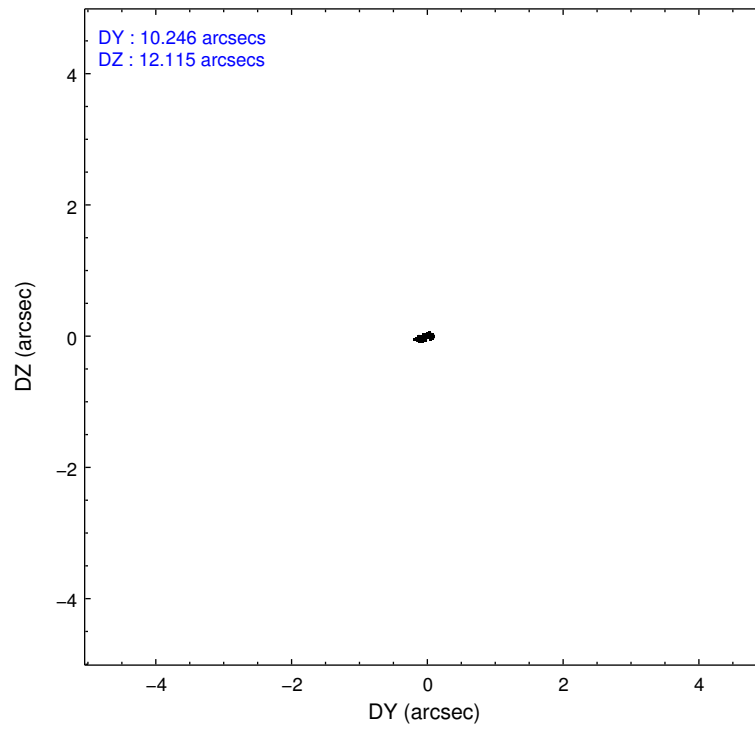
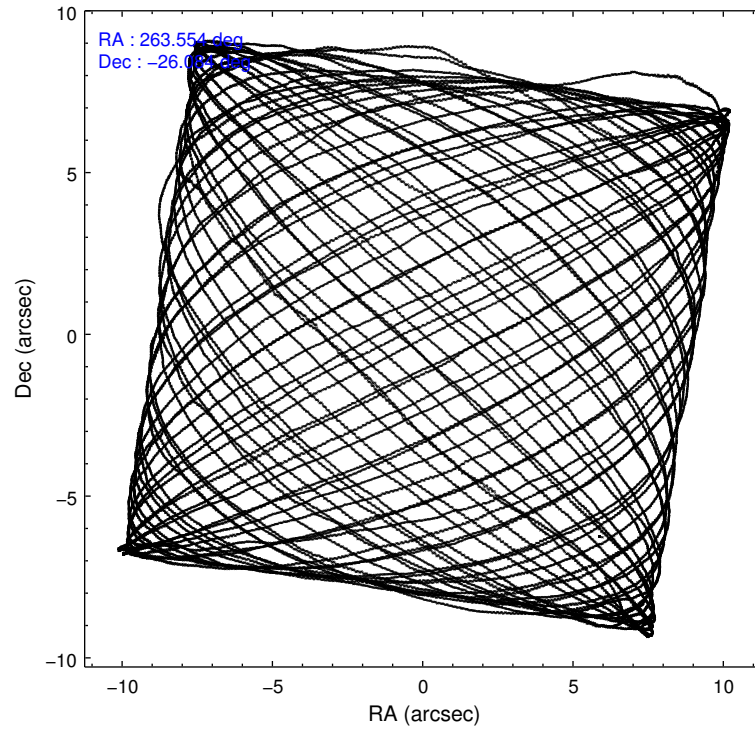
2.1.4 Events

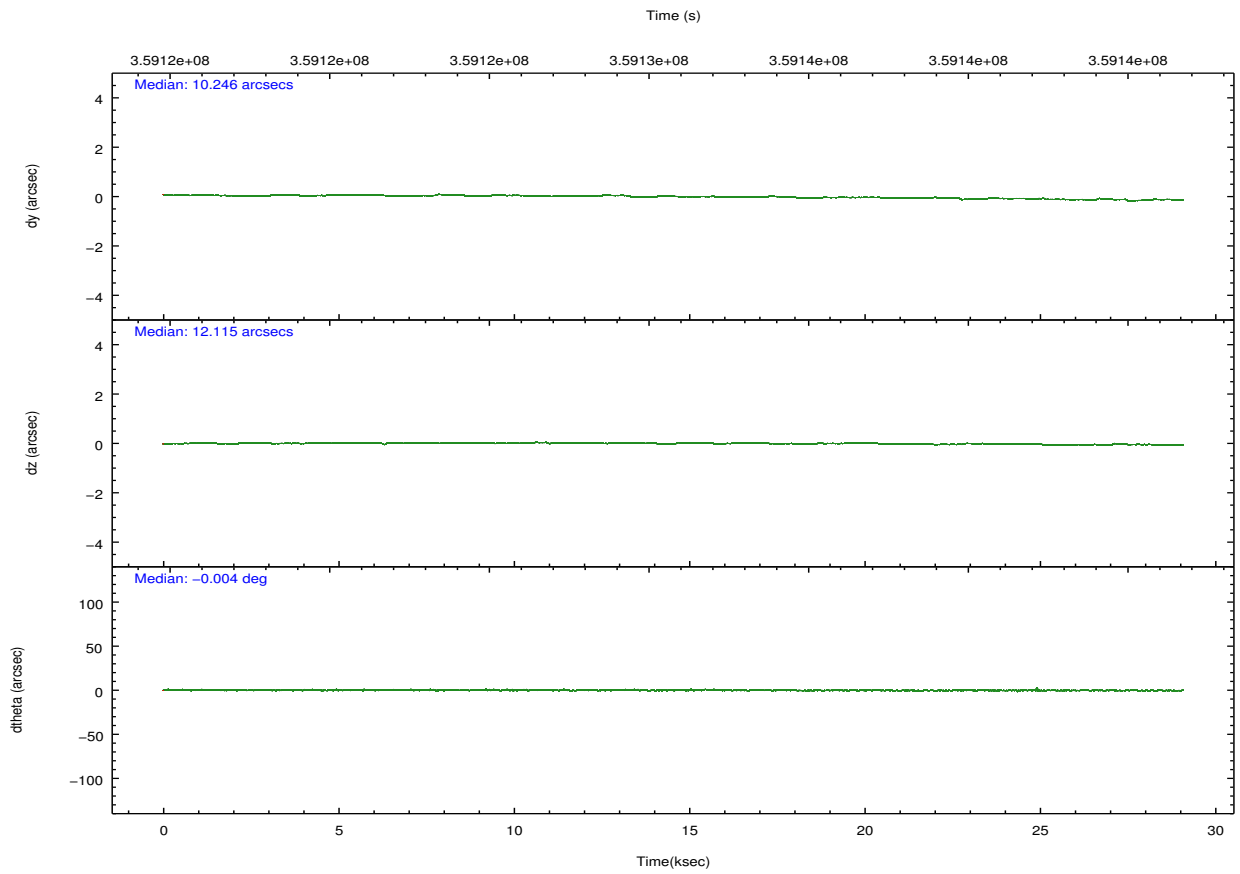
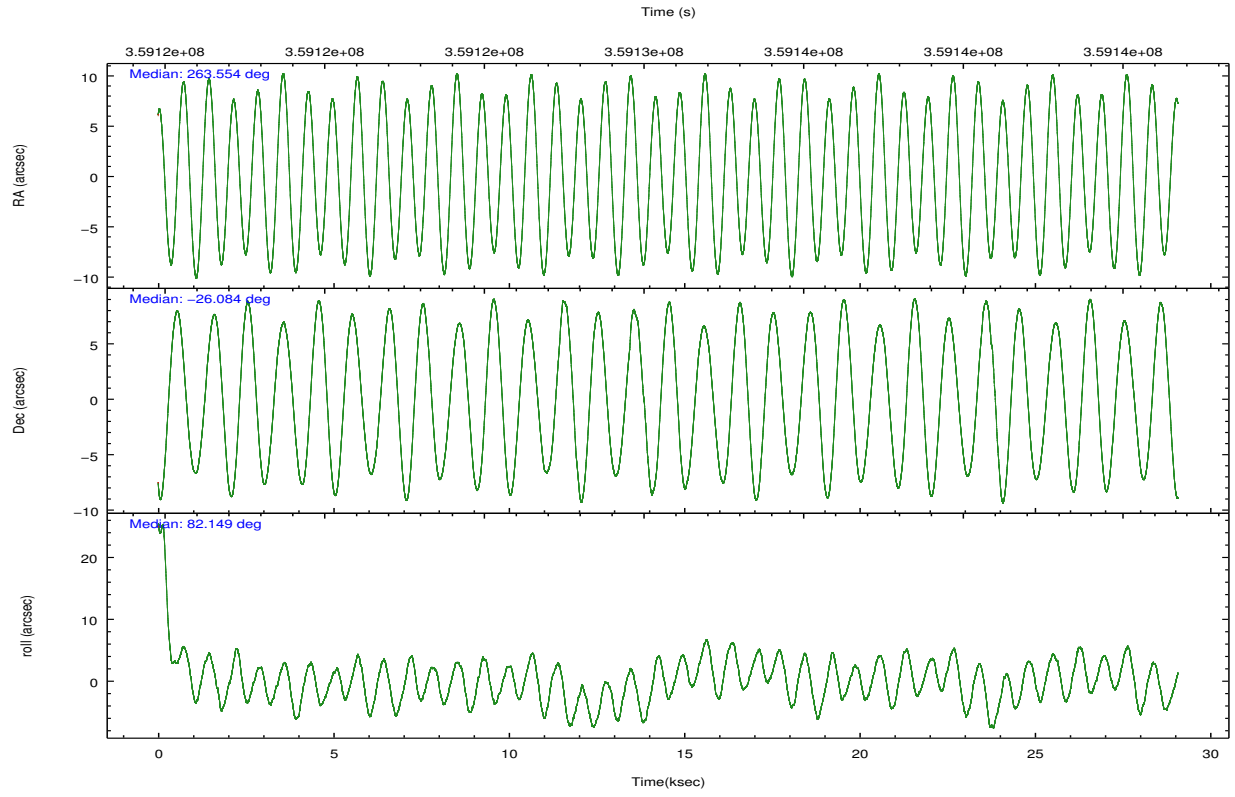
	ccd 2	ccd 3	ccd 5	ccd 6	ccd 7	ccd 8		ccd 2	ccd 3	ccd 5	ccd 6	ccd 7	ccd 8
level 1 events	299717	284915	468024	300393	414530	380132	grade 0 events	14957	15866	21994	14752	14468	28590
rejected events	264722	249045	252368	263511	243344	289050		4%	5%	4%	4%	3%	7%
rejected %	88%	87%	53%	87%	58%	76%	grade 1 events	231	240	666	155	456	316
								0%	0%	0%	0%	0%	0%
							grade 2 events	7569	7106	66194	8089	35259	20746
								2%	2%	14%	2%	8%	5%
							grade 3 events	3220	3295	7770	3454	14051	9282
								1%	1%	1%	1%	3%	2%
							grade 4 events	3300	3329	7209	3248	14096	8582
								1%	1%	1%	1%	3%	2%
							grade 5 events	12221	13713	33095	14489	38247	19231
								4%	4%	7%	4%	9%	5%
							grade 6 events	5965	6284	112547	7345	93344	23899
								1%	2%	24%	2%	22%	6%
							grade 7 events	252254	235082	218549	248861	204609	269486
								84%	82%	46%	82%	49%	70%

2.2 Compared Parameters

Parameter	Planned	Actual	Parameter	Planned	Actual
Instrument	ACIS	ACIS	Obspar format version number	7	7
Detector	ACIS-235678	ACIS-235678	Obspar file type	PREDICTED	ACTUAL
Grating	NONE	NONE	Obspar update status	NONE	UPDATED
Data mode	FAINT	FAINT	CCD I0 on	N	N
Observation mode	POINTING	POINTING	CCD I1 on	N	N
[deg] Pointing RA	263.565517	263.5536542272891	CCD I2 on	O1	Y
[deg] Pointing Dec	-26.109282	-26.08409890857911	CCD I3 on	O2	Y
[deg] Pointing Roll	82.004262	82.15567340323821	CCD S0 on	N	N
[mm] SIM focus pos	-0.684267	-0.6828225247311905	CCD S1 on	Y	Y
[mm] SIM defocus	0	0.001444936568705701	CCD S2 on	Y	Y
[mm] SIM translation stage pos	-190.132523	-190.1425803651734	CCD S3 on	Y	Y
[mm] SIM translation stage offset	0	0.01005778216563158	CCD S4 on	Y	Y
[s] Observation start time (MET)	359117311.184000	359115895.81672	CCD S5 on	N	N
Observation start date	2009-05-19T10:47:25	2009-05-19T10:24:55	Number of optional ACIS chips dropped	0	0
[s] Observation end time (MET)	359145287.184000	359145511.65569	On-chip summing requested	N	N
Observation end date	2009-05-19T18:33:41	2009-05-19T18:38:31	Subarray requested	NONE	NONE
Read mode	TIMED	TIMED	Alternating exposures requested	N	N
			[s] Primary exposure time	0.000000	3.2

2.3 Aspect



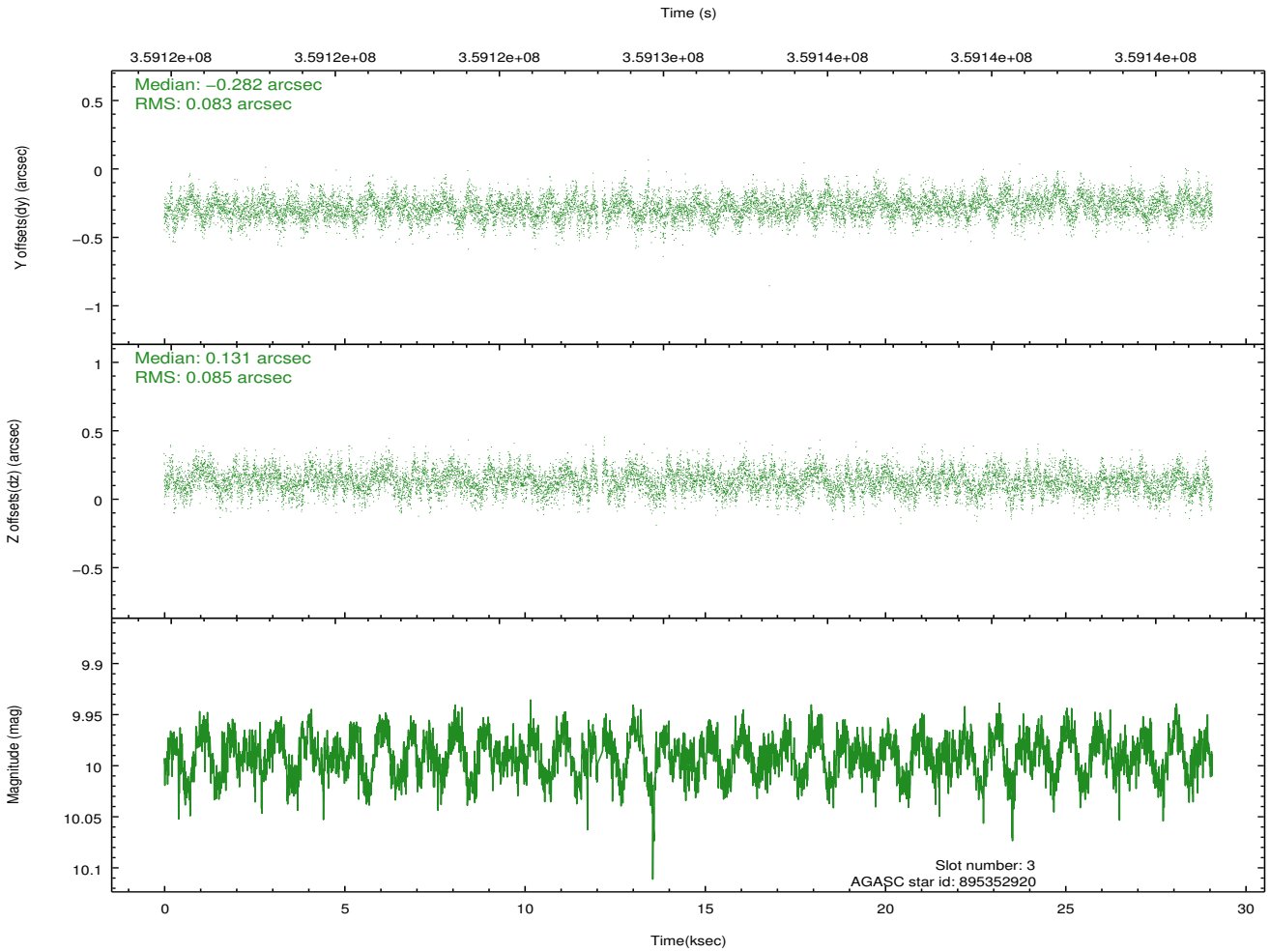
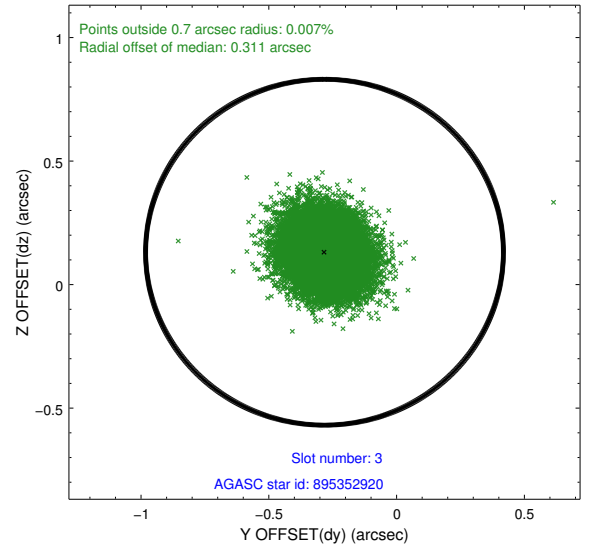
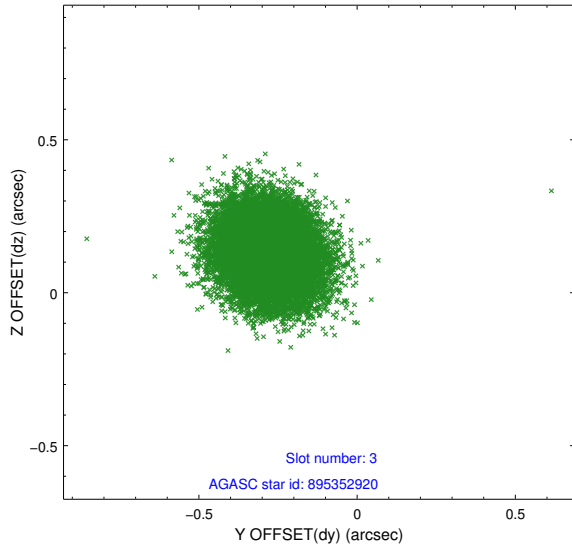


Slot Statistics

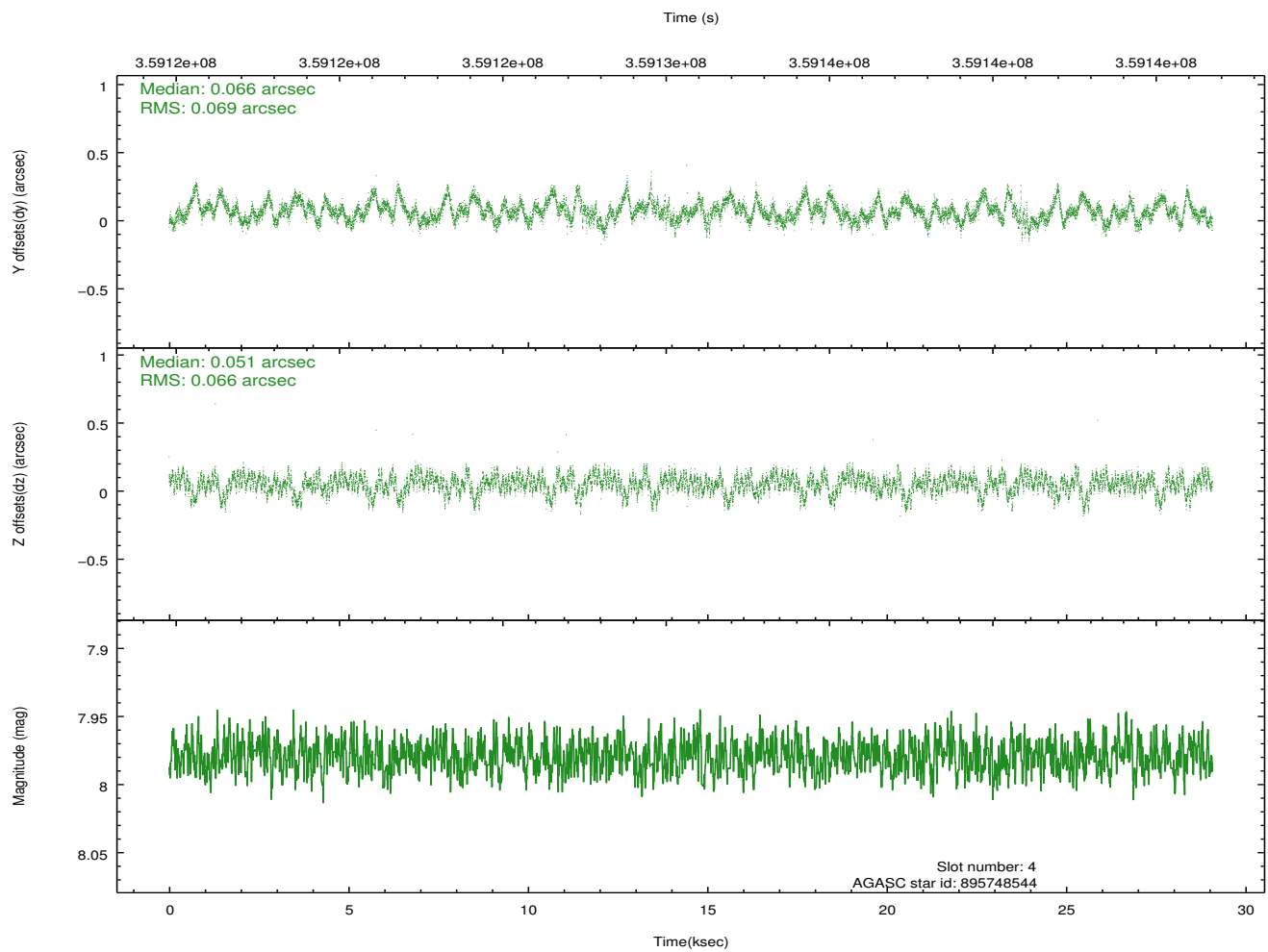
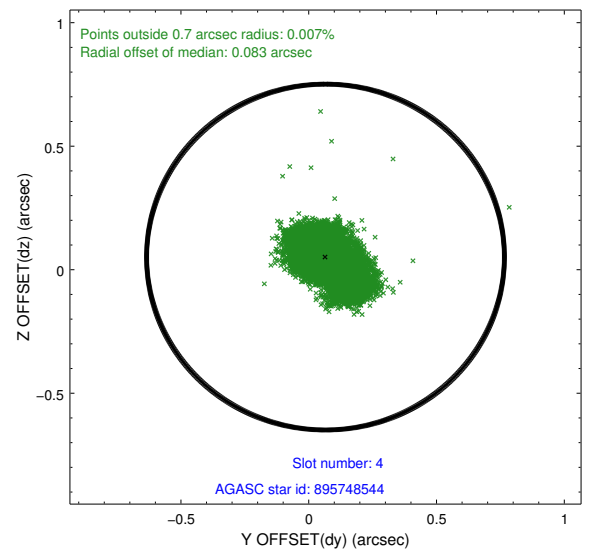
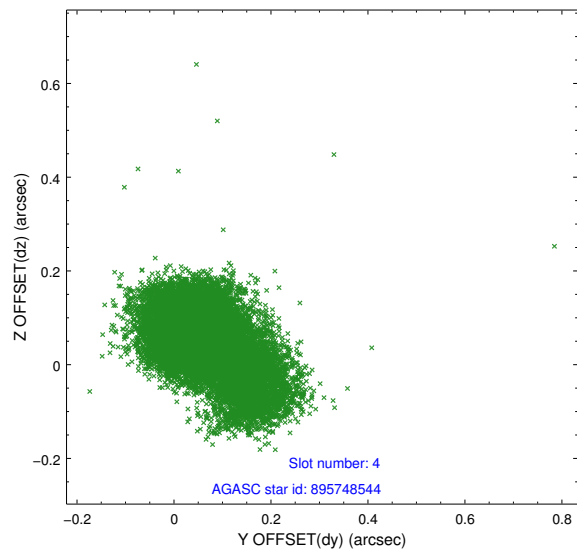
slot	status	id	mag	n_pts	med_dy	med_dz	dr1	dr2	ra	dec	mean_y	mean_z
0	FID	ACIS-S-1	7.02	7092	0.040	-0.075	0.010	0.017	0.000000	0.000000	932.96	-1729.08
1	FID	ACIS-S-4	7.03	7092	0.093	0.037	0.012	0.020	0.000000	0.000000	2150.50	175.08
2	FID	ACIS-S-5	7.06	7092	-0.160	0.051	0.014	0.023	0.000000	0.000000	-1815.97	168.86
3	GUIDE	895352920	9.99	14103	-0.282	0.131	0.126	0.205	264.217496	-25.713600	1699.58	-1896.03
4	GUIDE	895748544	7.98	14181	0.066	0.051	0.098	0.177	263.692859	-26.739685	-2190.08	-721.26
5	GUIDE	895881920	9.42	14161	0.134	-0.050	0.104	0.171	263.913988	-26.630022	-1701.53	-1371.59
6	GUIDE	895882448	10.24	14156	0.086	0.093	0.188	0.299	264.180279	-26.834668	-2315.63	-2319.82
7	GUIDE	895223200	10.44	14148	-0.013	-0.212	0.194	0.320	262.834279	-26.055766	-145.34	2367.07

2.4 Star Slots

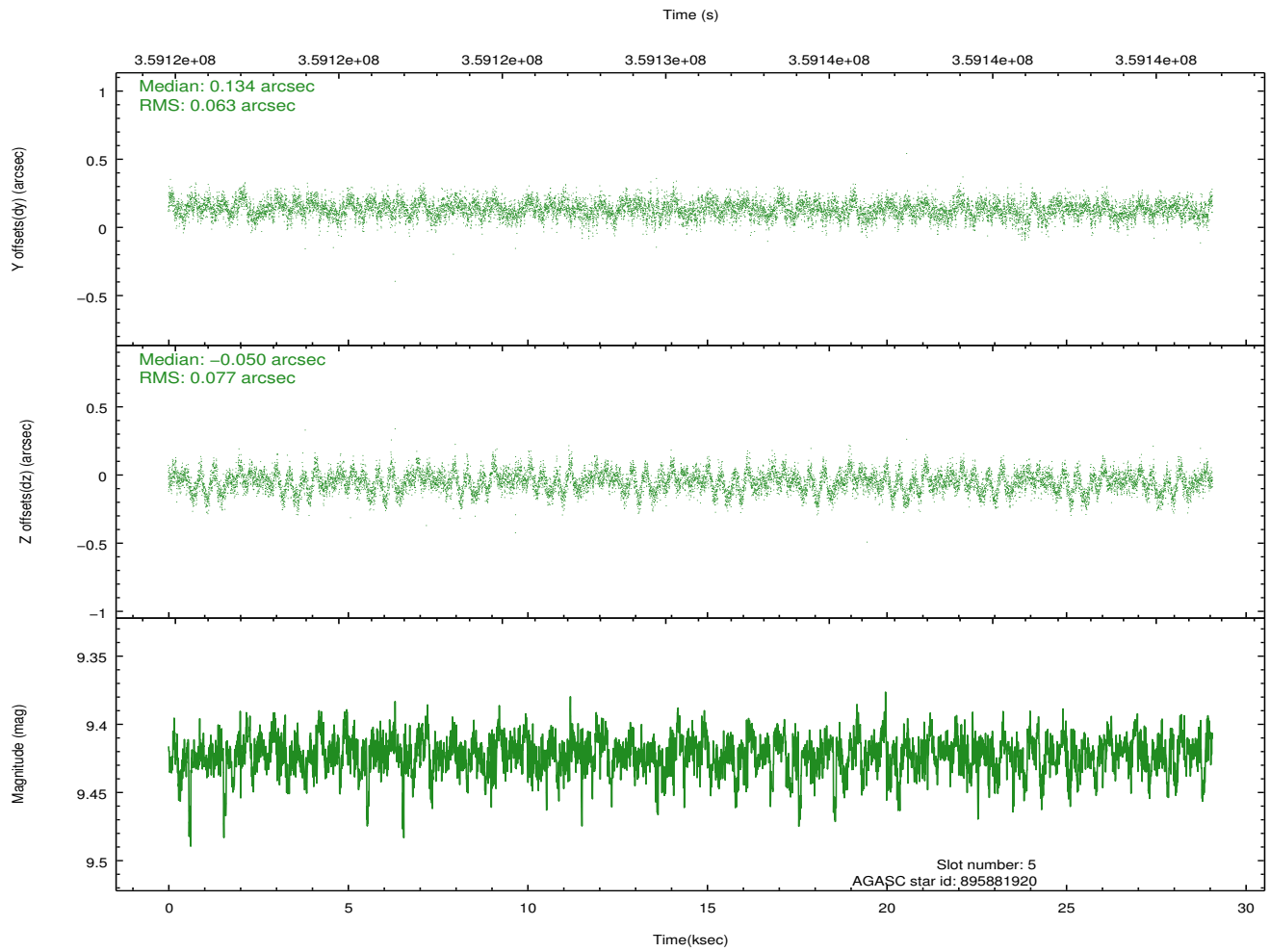
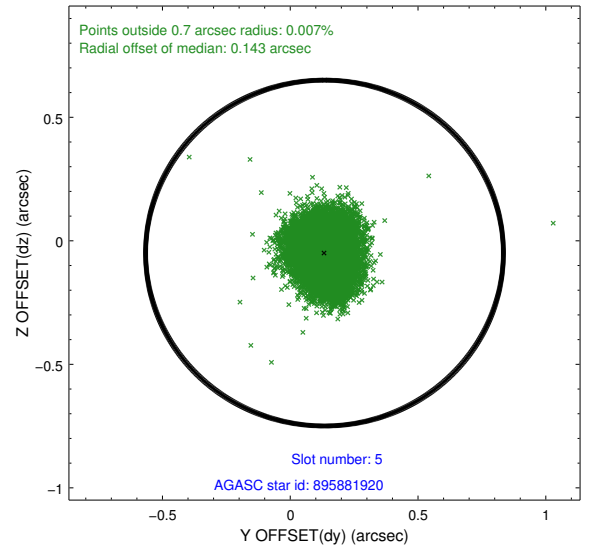
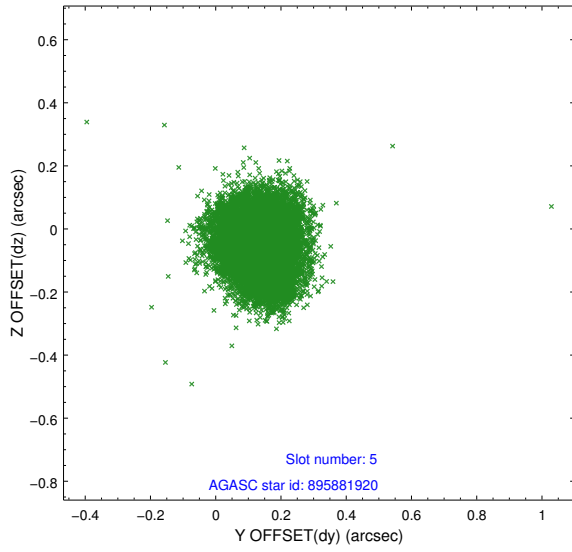
2.4.1 Slot 3



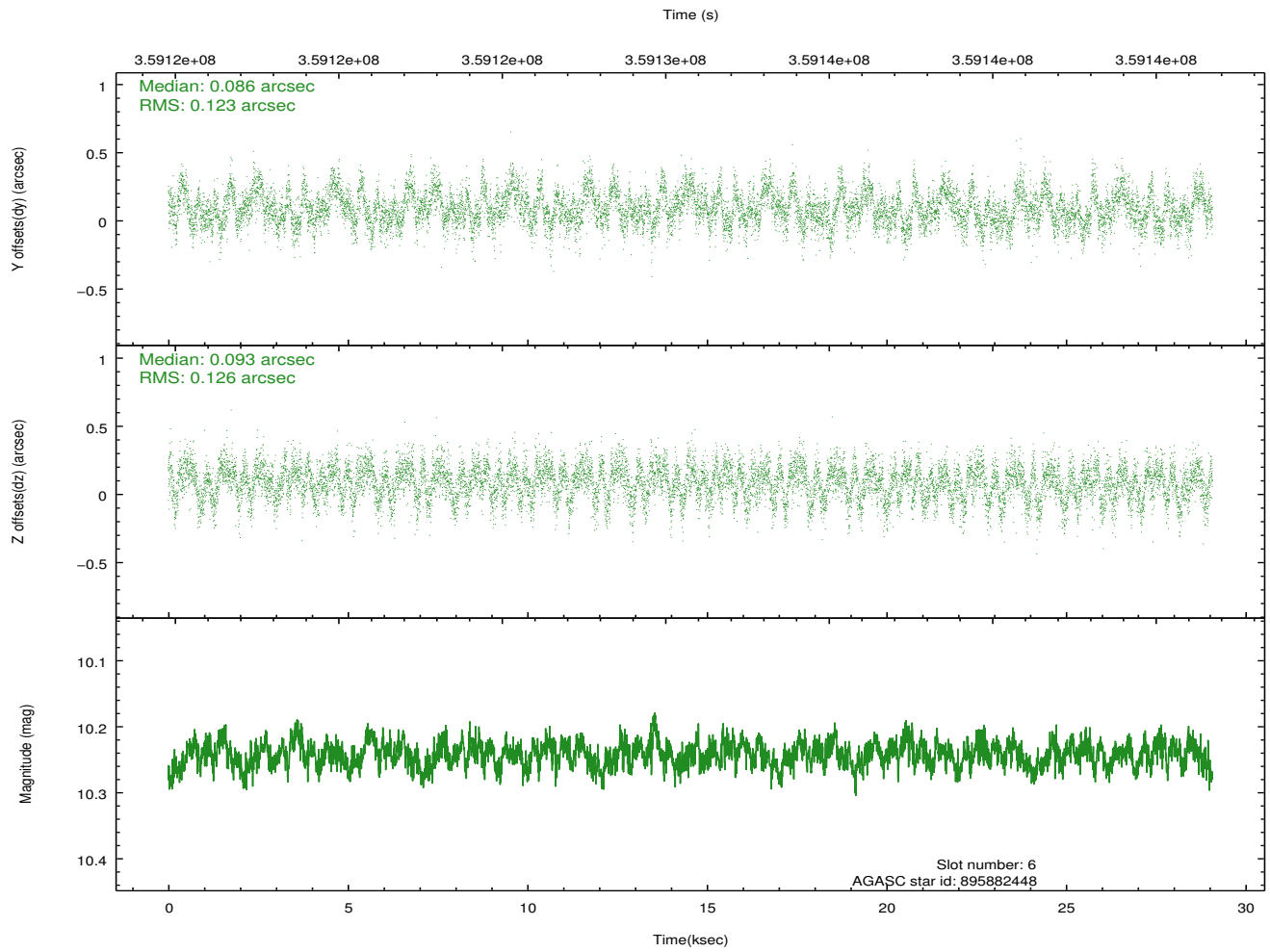
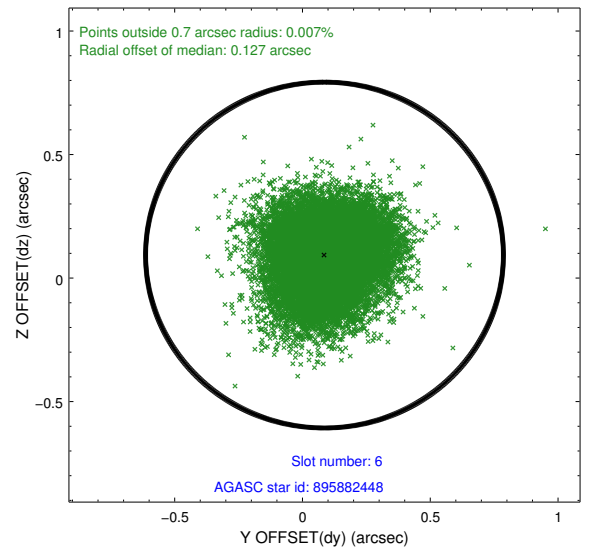
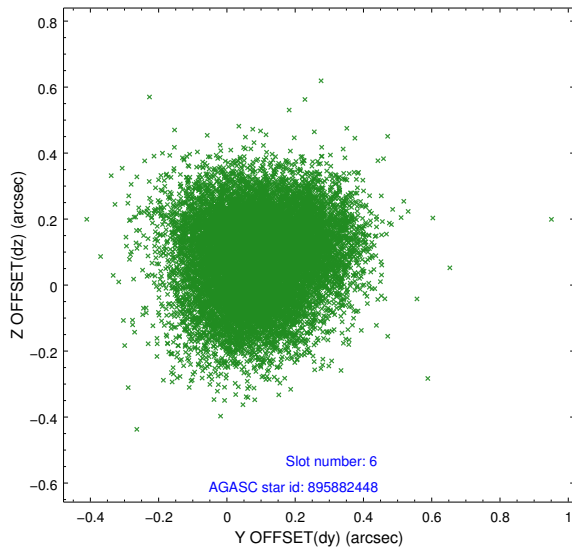
2.4.2 Slot 4



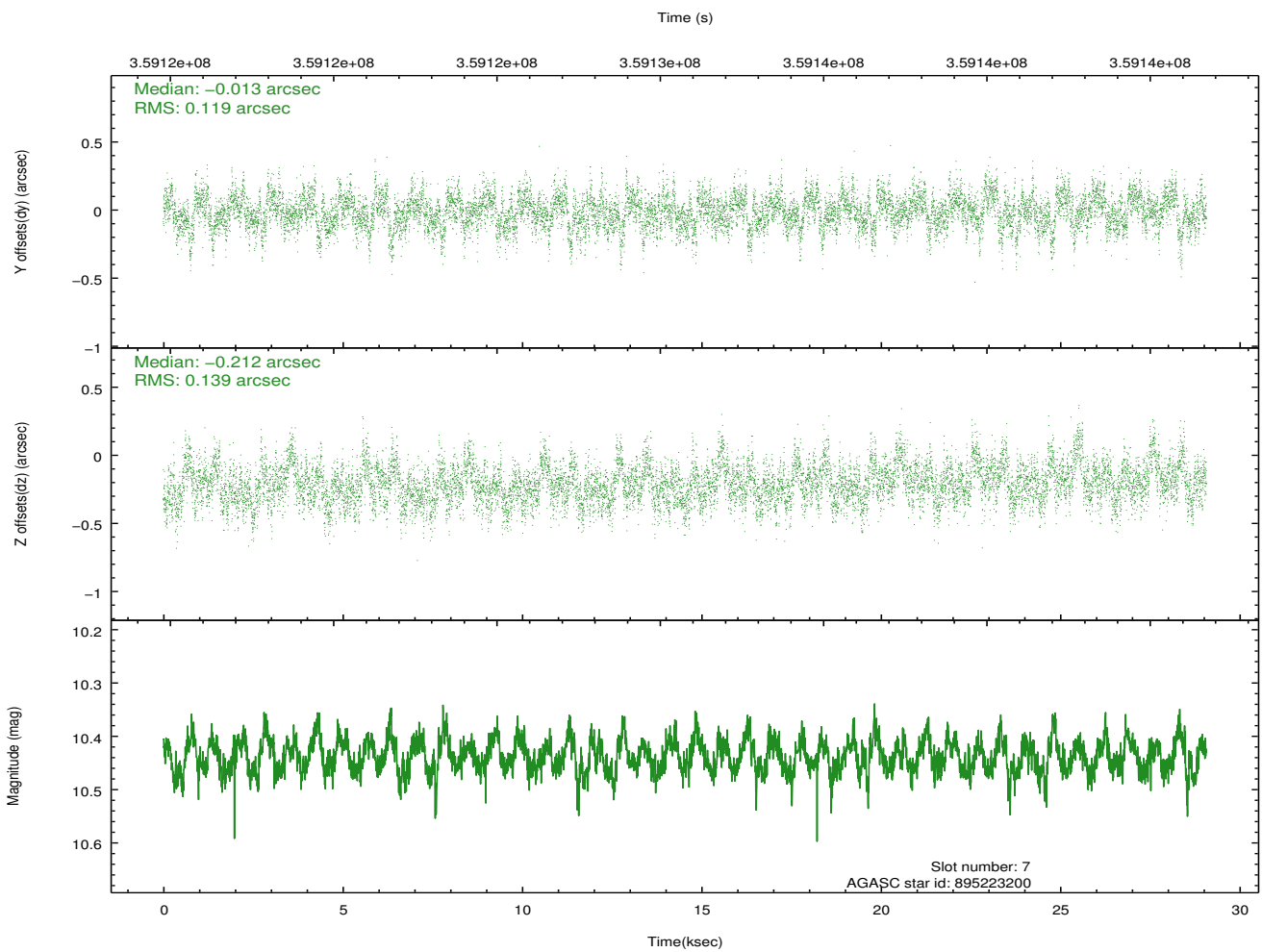
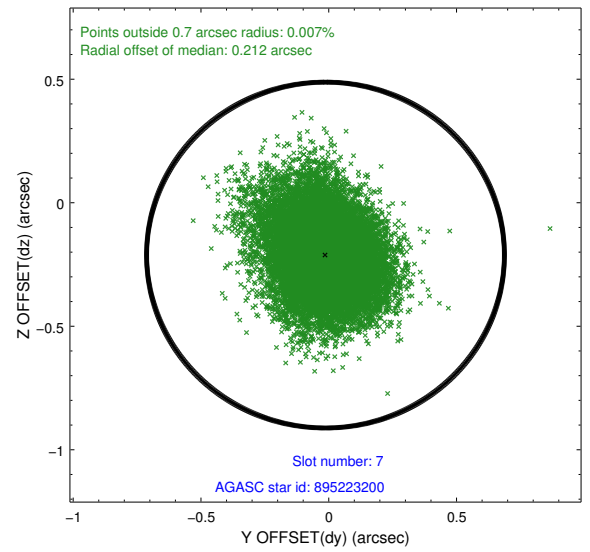
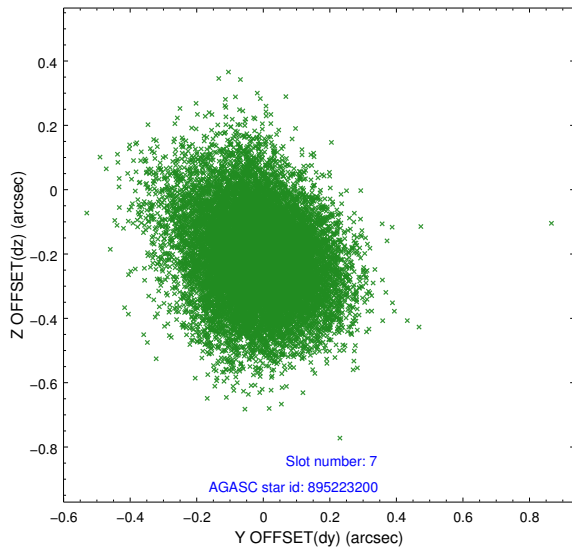
2.4.3 Slot 5



2.4.4 Slot 6

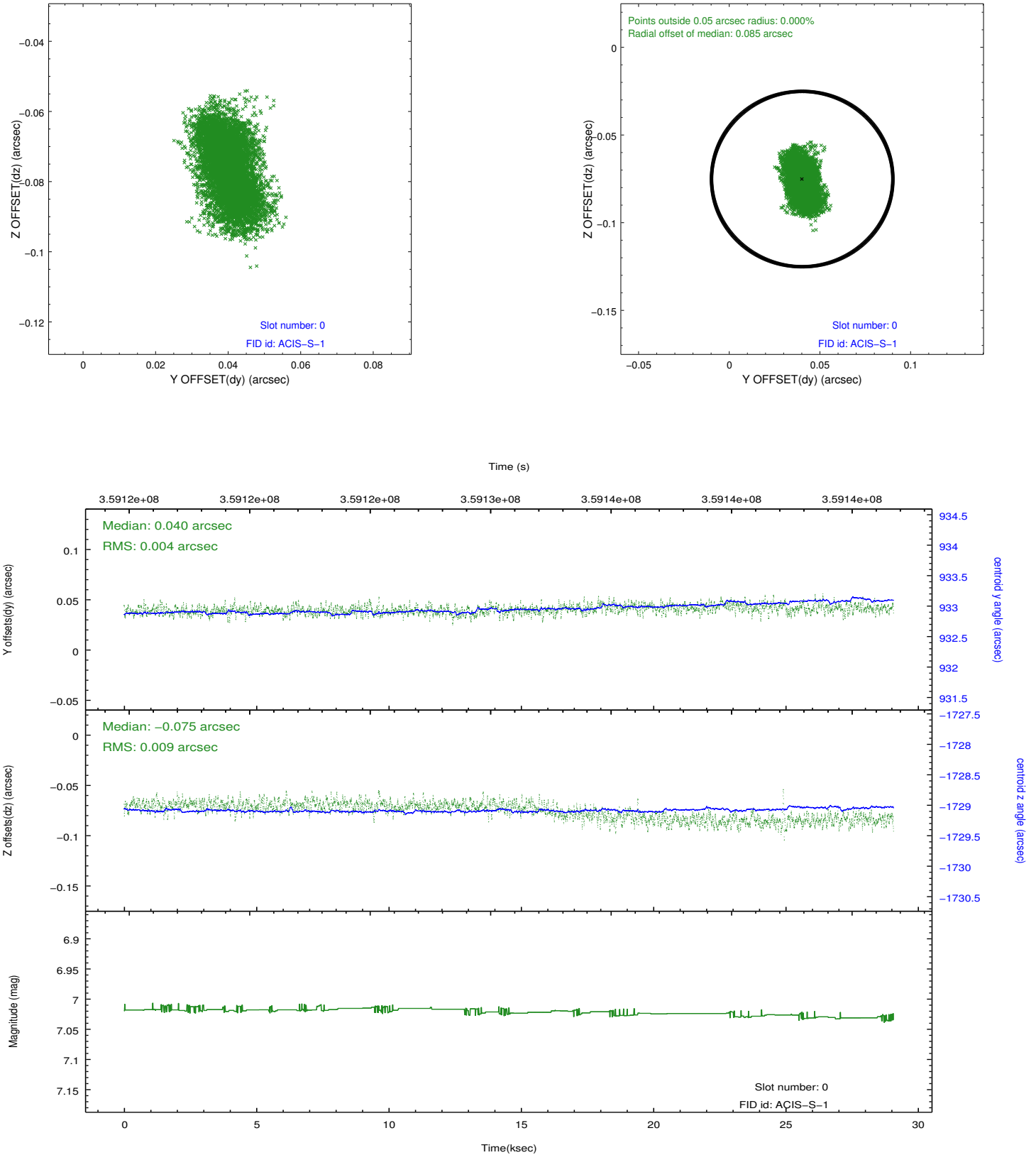


2.4.5 Slot 7

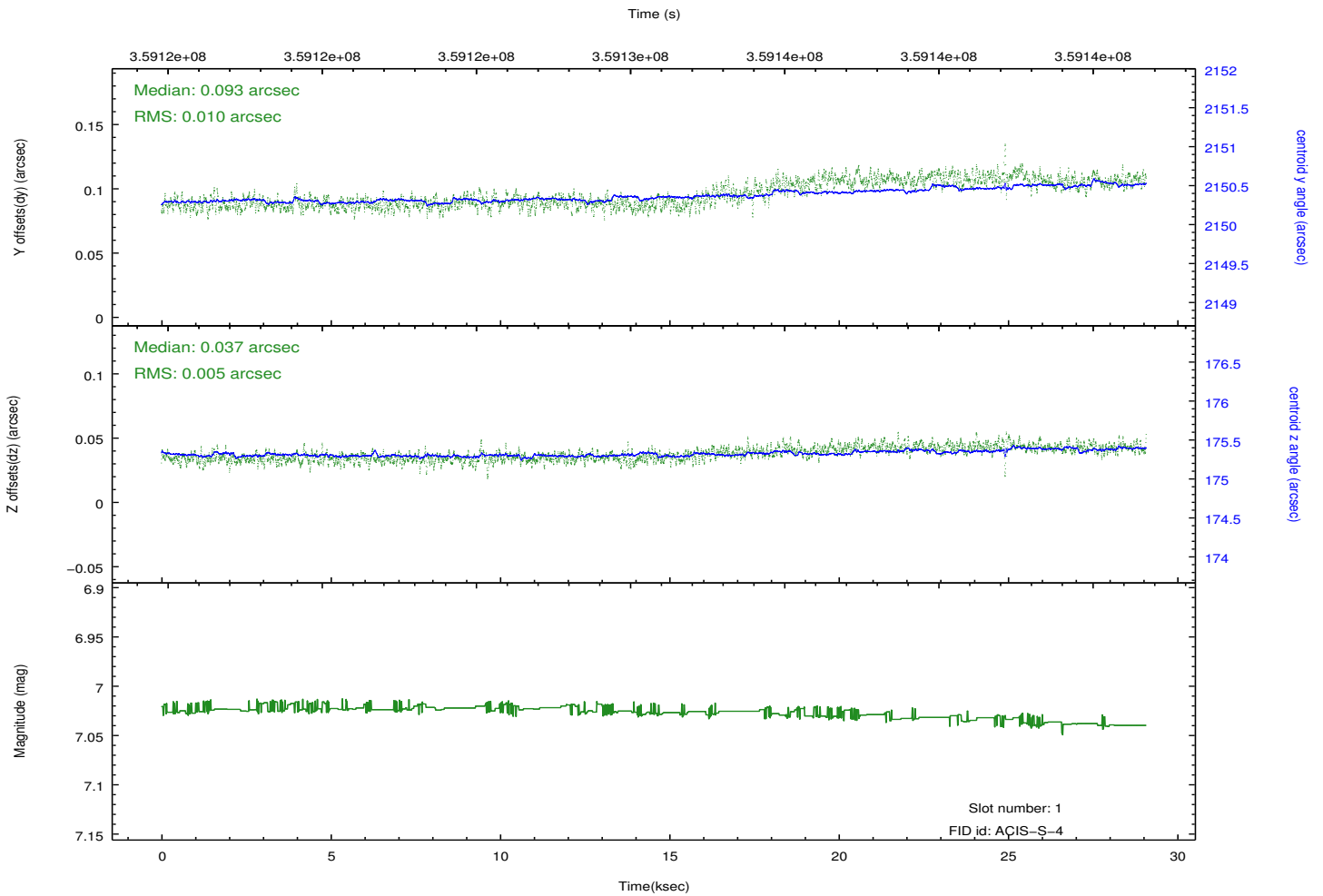
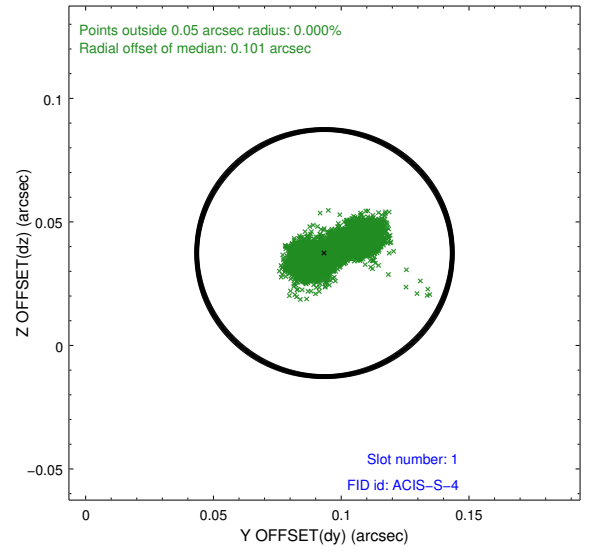
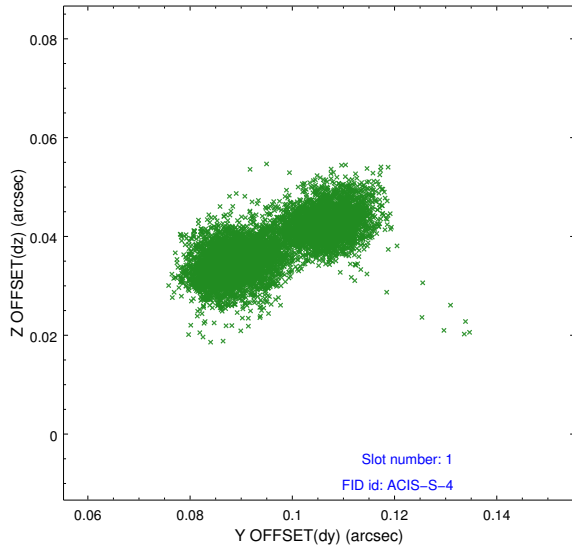


2.5 FID Slots

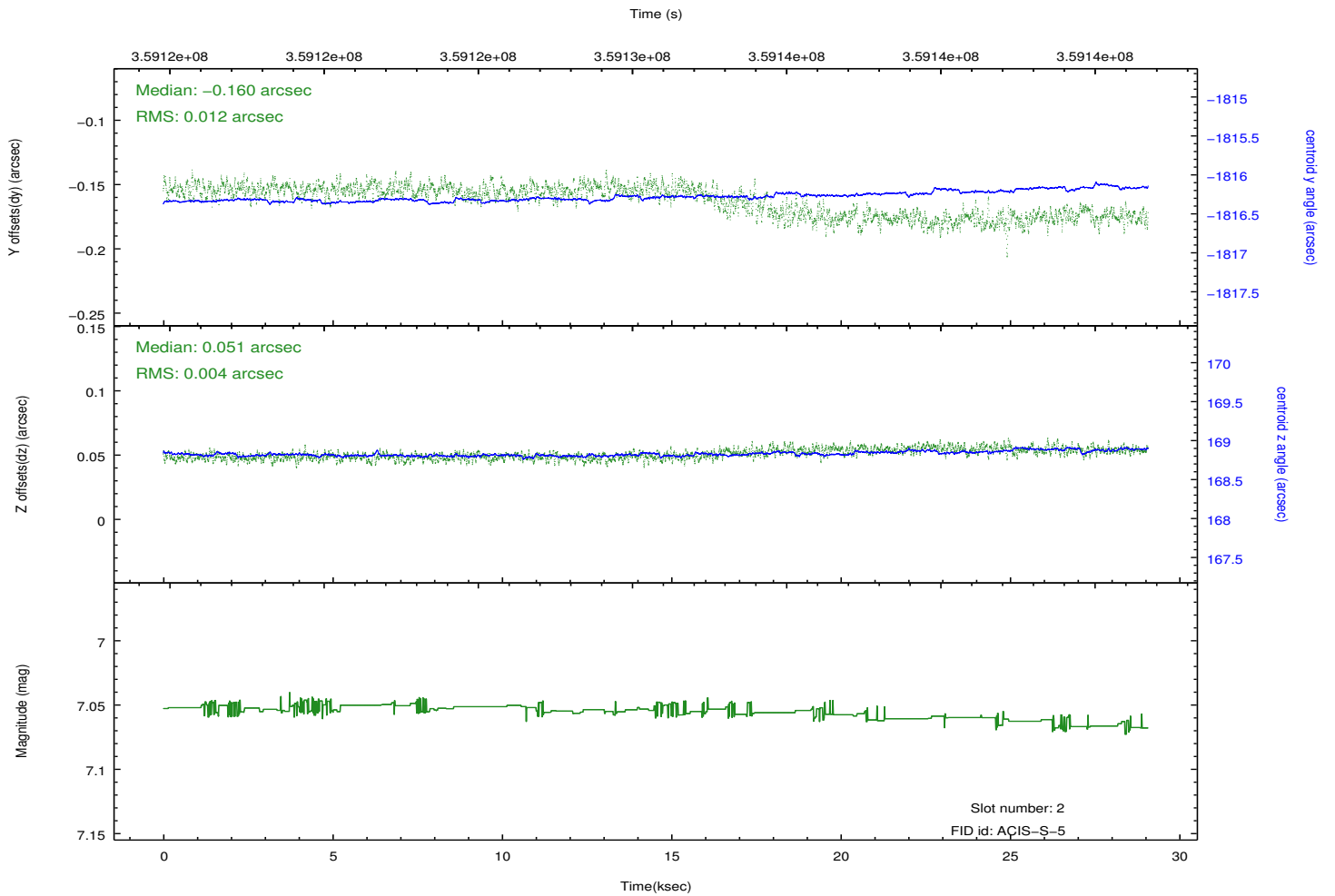
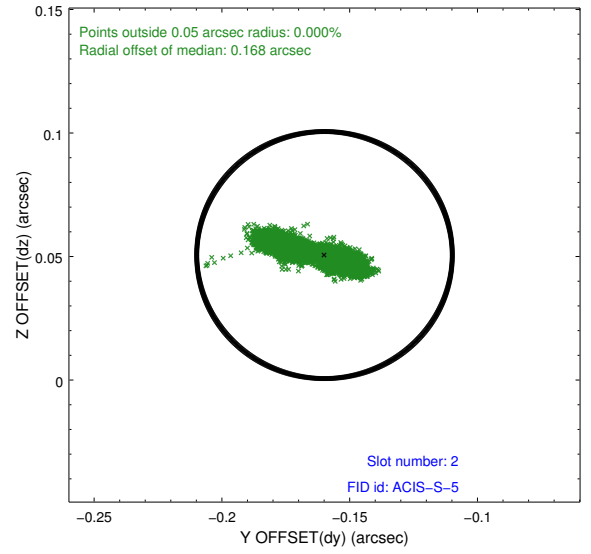
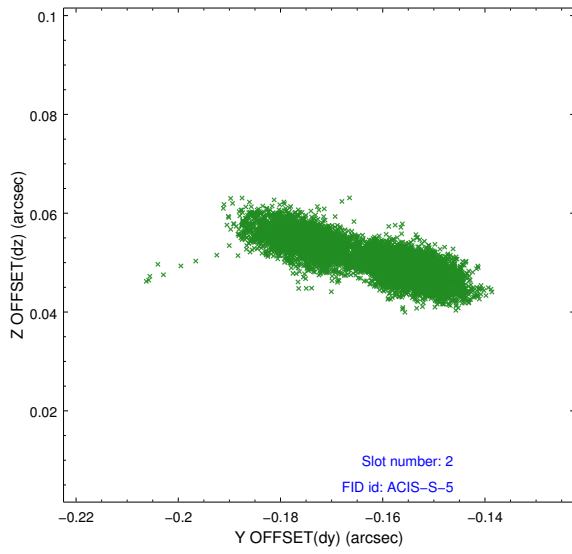
2.5.1 Slot 0



2.5.2 Slot 1



2.5.3 Slot 2



A Summary

A.1 Status

V&V Scientist	Jen Lauer
V&V Date (YYYY-MM-DD)	2012.06.11
V&V Edition	1
V&V Disposition and Status	OK
V&V Charge Time	27.9231998

A.2 Comments