

V&V Reference Report

L2 ASCDS Version : 8.4.5

Observation 12001 - L2 Version 3
Chandra X-Ray Center

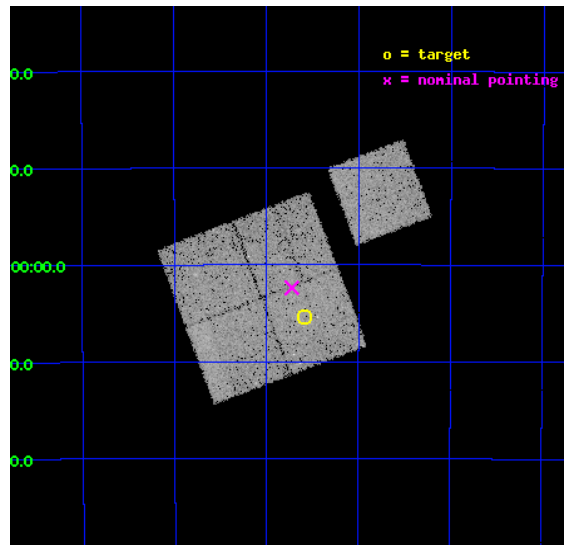
L2 Processing Date : Jun 15 2012

Contents

1	Front	2
2	OBI	3
2.1	OBI	3
2.1.1	Images	3
2.1.2	Bias	3
2.1.3	Parameters	4
2.1.4	Events	4
2.2	Compared Parameters	5
2.3	Aspect	6
2.4	Star Slots	9
2.4.1	Slot 3	9
2.4.2	Slot 4	10
2.4.3	Slot 5	11
2.4.4	Slot 6	12
2.4.5	Slot 7	13
2.5	FID Slots	14
2.5.1	Slot 0	14
2.5.2	Slot 1	15
2.5.3	Slot 2	16
A	Summary	17
A.1	Status	17
A.2	Comments	17

1 Front

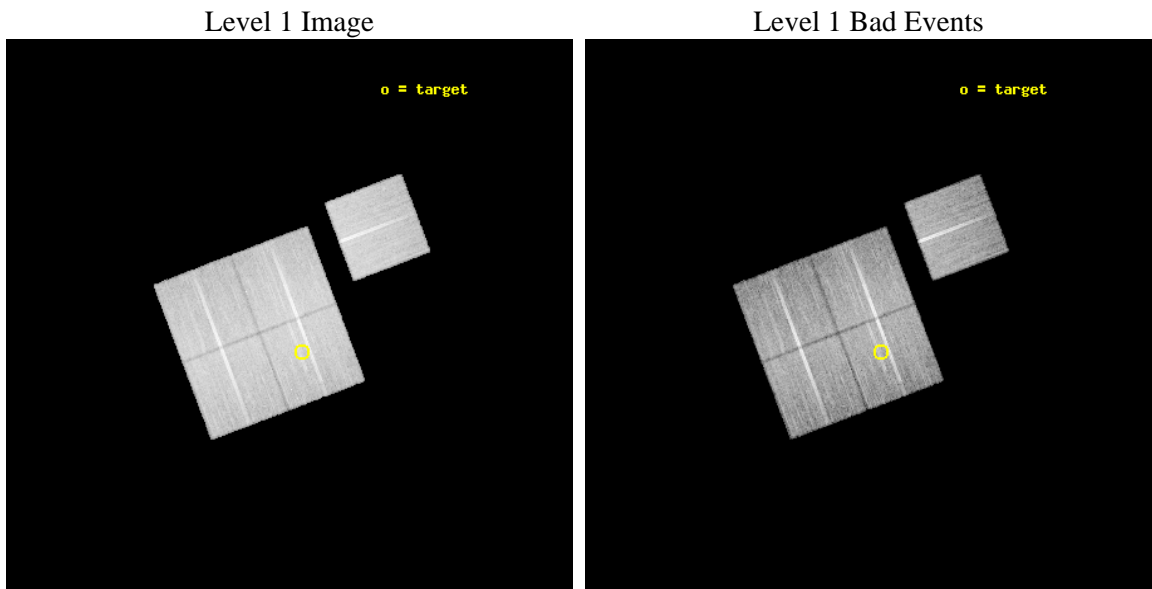
seq_num	800888	Sequence number
obs_id	12001	Observation id
title	Chandra Observations of a Complete Sample of SZE Selected Galaxy Clusters	Proposal title
observer	Dr Joseph Mohr	Principal investigator
object	SPT-CL 0534-5005	Source name
dtcycle	0	
cycle	P	events from which exps? Prim/Second/Both
ra_targ	83.397917	Observer's specified target RA [deg]
dec_targ	-50.09	Observer's specified target Dec [deg]
ra_nom	83.430770396639	Nominal RA [deg]
dec_nom	-50.039881114184	Nominal Dec [deg]
roll_nom	69.233874752753	Nominal Roll [deg]
revision	3	Processing version of data
ontime	19536.118129849	Sum of GTIs [s]
livetime	19280.864364202	Livetime [s]
ontime0	19539.259130061	Sum of GTIs [s]
ontime1	19536.118159771	Sum of GTIs [s]
ontime2	19539.259159923	Sum of GTIs [s]
ontime3	19536.118129849	Sum of GTIs [s]
ontime6	19542.400150299	Sum of GTIs [s]
l2events	74471	Number of level 2 events



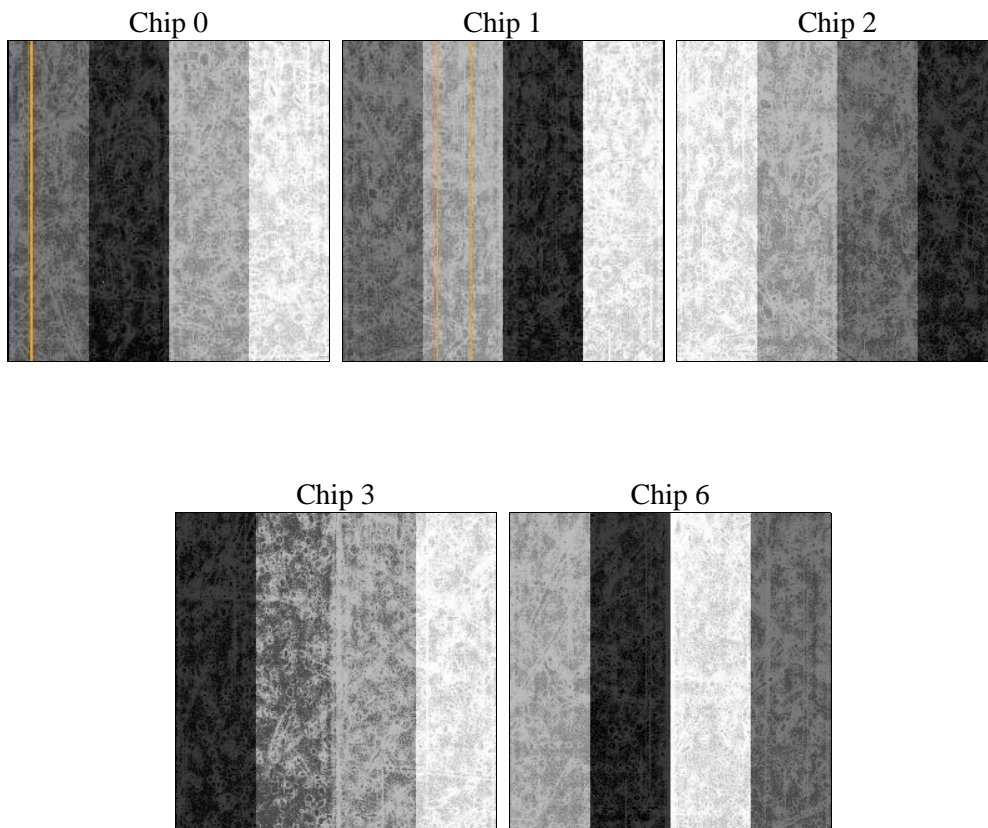
2 OBI

2.1 OBI

2.1.1 Images



2.1.2 Bias



2.1.3 Parameters

obi_num	0	Obi number	sched_exp_time	19500.000000	[s] Scheduled observation exposure time
ascdsver	8.4.5	Processing system revision	ontime	19536.118129849	Sum of GTIs [s]
caldbver	4.4.10	 	ontime0	19539.259130061	Sum of GTIs [s]
date	2012-06-15T12:19:53	Date and time of file creation	ontime1	19536.118159771	Sum of GTIs [s]
revision	3	Processing version of data	ontime2	19539.259159923	Sum of GTIs [s]
			ontime3	19536.118129849	Sum of GTIs [s]
			ontime6	19542.400150299	Sum of GTIs [s]
			l1events	843355	Number of level 1 events

2.1.4 Events

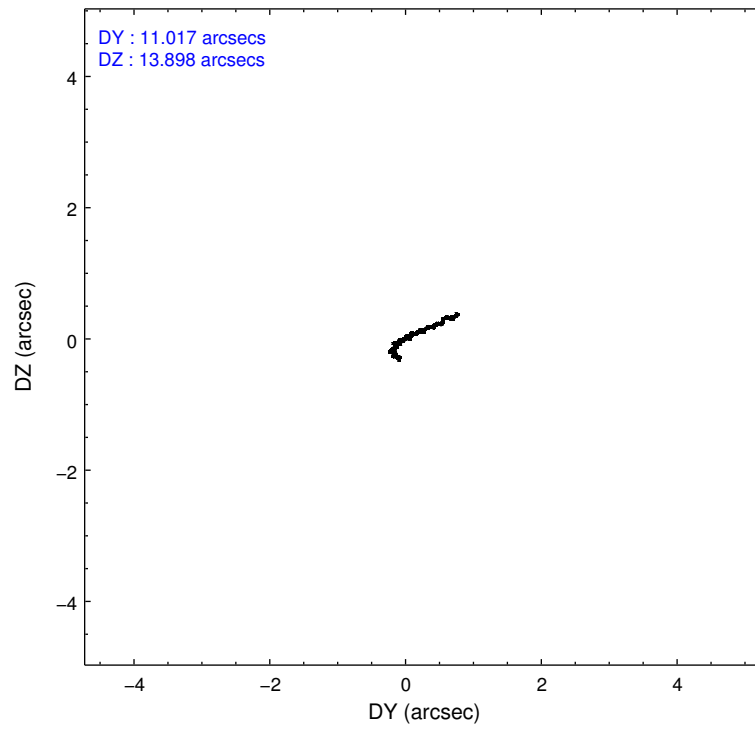
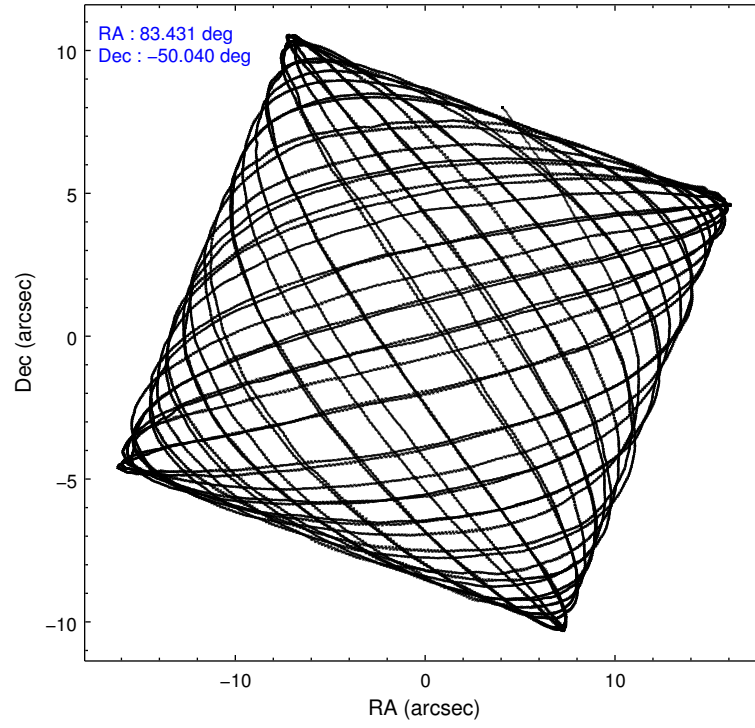
	ccd 0	ccd 1	ccd 2	ccd 3	ccd 6
level 1 events	158382	164048	177074	171307	172544
rejected events	140629	144401	159933	154120	154492
rejected %	88%	88%	90%	89%	89%

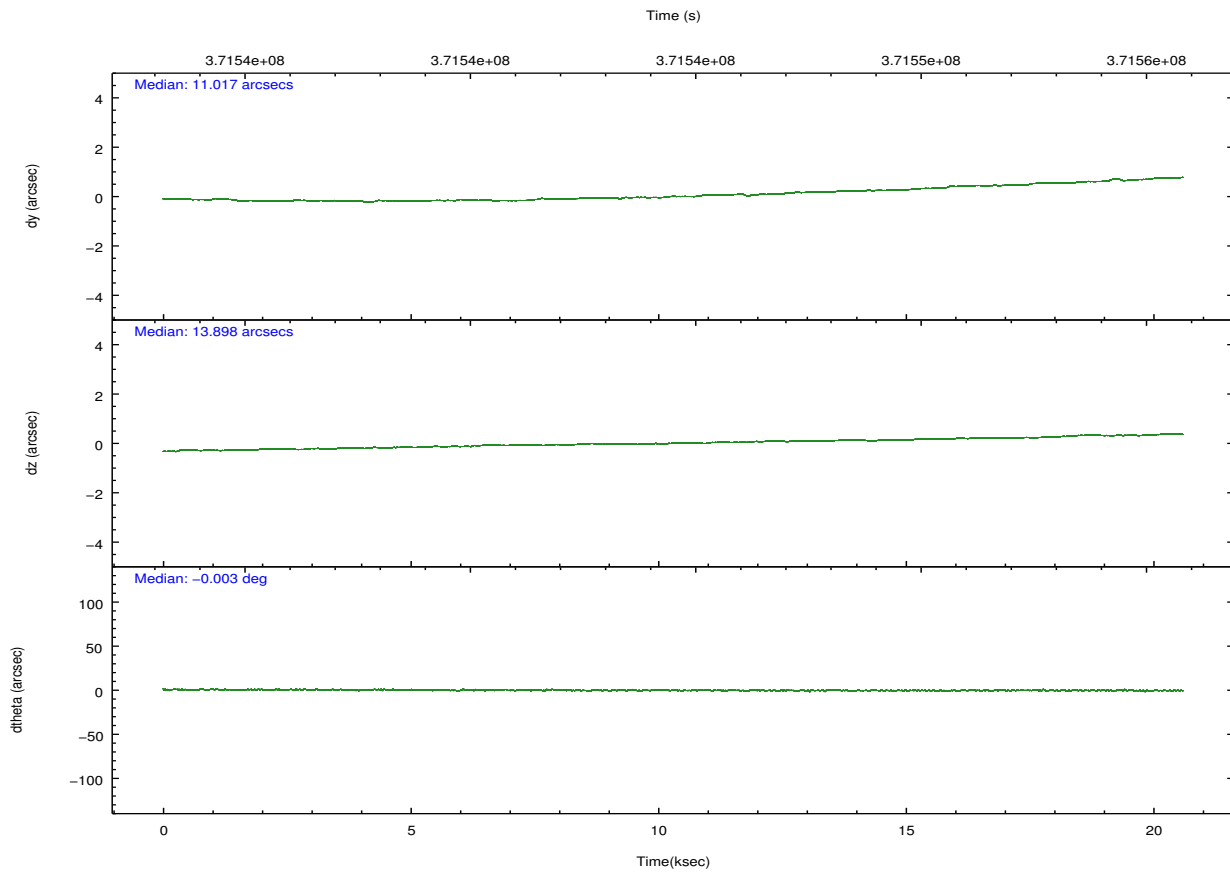
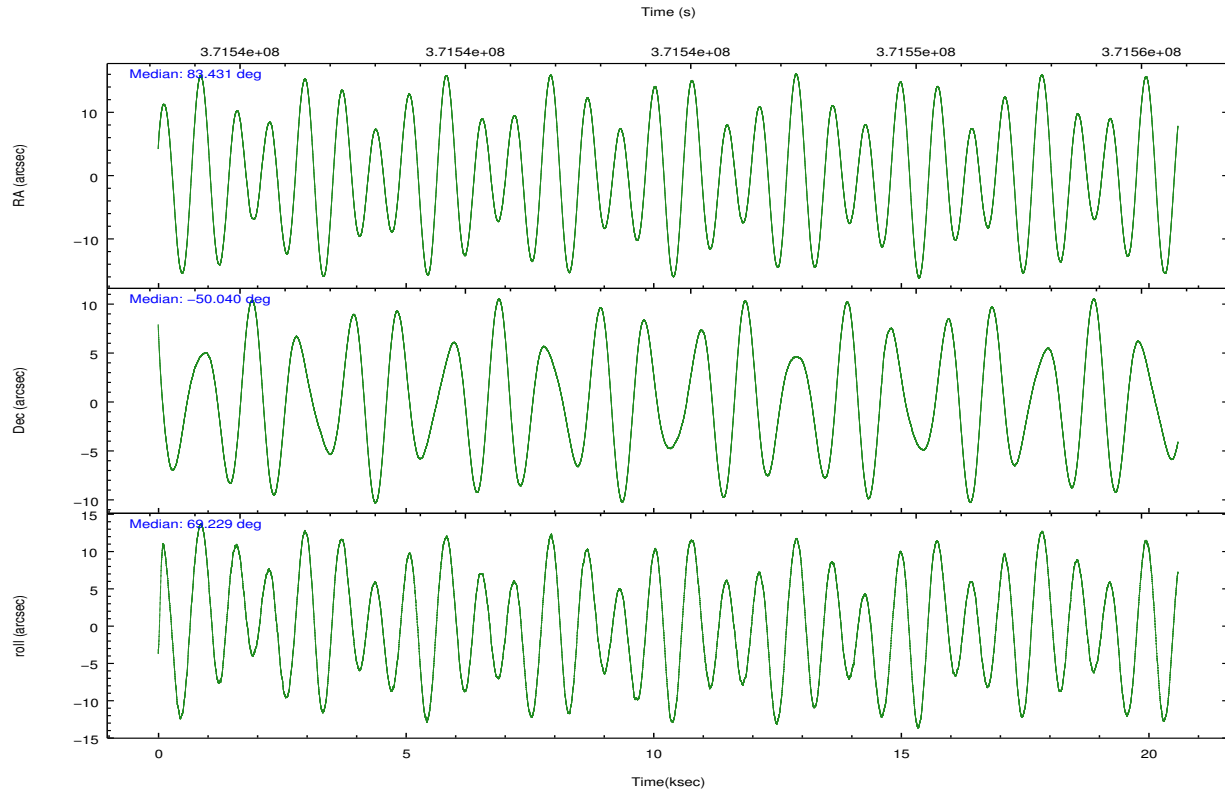
	ccd 0	ccd 1	ccd 2	ccd 3	ccd 6
grade 0 events	6153	6998	6128	6104	6221
	3%	4%	3%	3%	3%
grade 1 events	108	73	98	116	89
	0%	0%	0%	0%	0%
grade 2 events	4396	4661	4218	3831	3941
	2%	2%	2%	2%	2%
grade 3 events	1959	2109	1816	1937	1950
	1%	1%	1%	1%	1%
grade 4 events	1774	1942	1786	1842	2000
	1%	1%	1%	1%	1%
grade 5 events	6309	6936	5945	7147	7059
	3%	4%	3%	4%	4%
grade 6 events	3475	3941	3198	3475	3945
	2%	2%	1%	2%	2%
grade 7 events	134208	137388	153885	146855	147339
	84%	83%	86%	85%	85%

2.2 Compared Parameters

Parameter	Planned	Actual	Parameter	Planned	Actual
Instrument	ACIS	ACIS	Obspar format version number	7	7
Detector	ACIS-01236	ACIS-01236	Obspar file type	PREDICTED	ACTUAL
Grating	NONE	NONE	Obspar update status	NONE	UPDATED
Data mode	VFAINT	VFAINT	CCD I0 on	Y	Y
Observation mode	POINTING	POINTING	CCD I1 on	Y	Y
[deg] Pointing RA	83.437826	83.43077039663918	CCD I2 on	Y	Y
[deg] Pointing Dec	-50.066975	-50.03988111418383	CCD I3 on	Y	Y
[deg] Pointing Roll	69.030596	69.23387475275281	CCD S0 on	N	N
[mm] SIM focus pos	-0.782348	-0.7809083437167272	CCD S1 on	N	N
[mm] SIM defocus	0	0.001439871863259334	CCD S2 on	O1	Y
[mm] SIM translation stage pos	-225.840463	-225.8433433320239	CCD S3 on	N	N
[mm] SIM translation stage offset	-7.752	-7.749109670905796	CCD S4 on	N	N
[s] Observation start time (MET)	371535294.184000	371533414.22573	CCD S5 on	N	N
Observation start date	2009-10-10T04:13:48	2009-10-10T03:43:34	Number of optional ACIS chips dropped	0	0
[s] Observation end time (MET)	371554794.184000	371555455.31434	On-chip summing requested	N	N
Observation end date	2009-10-10T09:38:48	2009-10-10T09:50:55	Subarray requested	NONE	NONE
Read mode	TIMED	TIMED	Alternating exposures requested	N	N
			[s] Primary exposure time	0.000000	3.1

2.3 Aspect



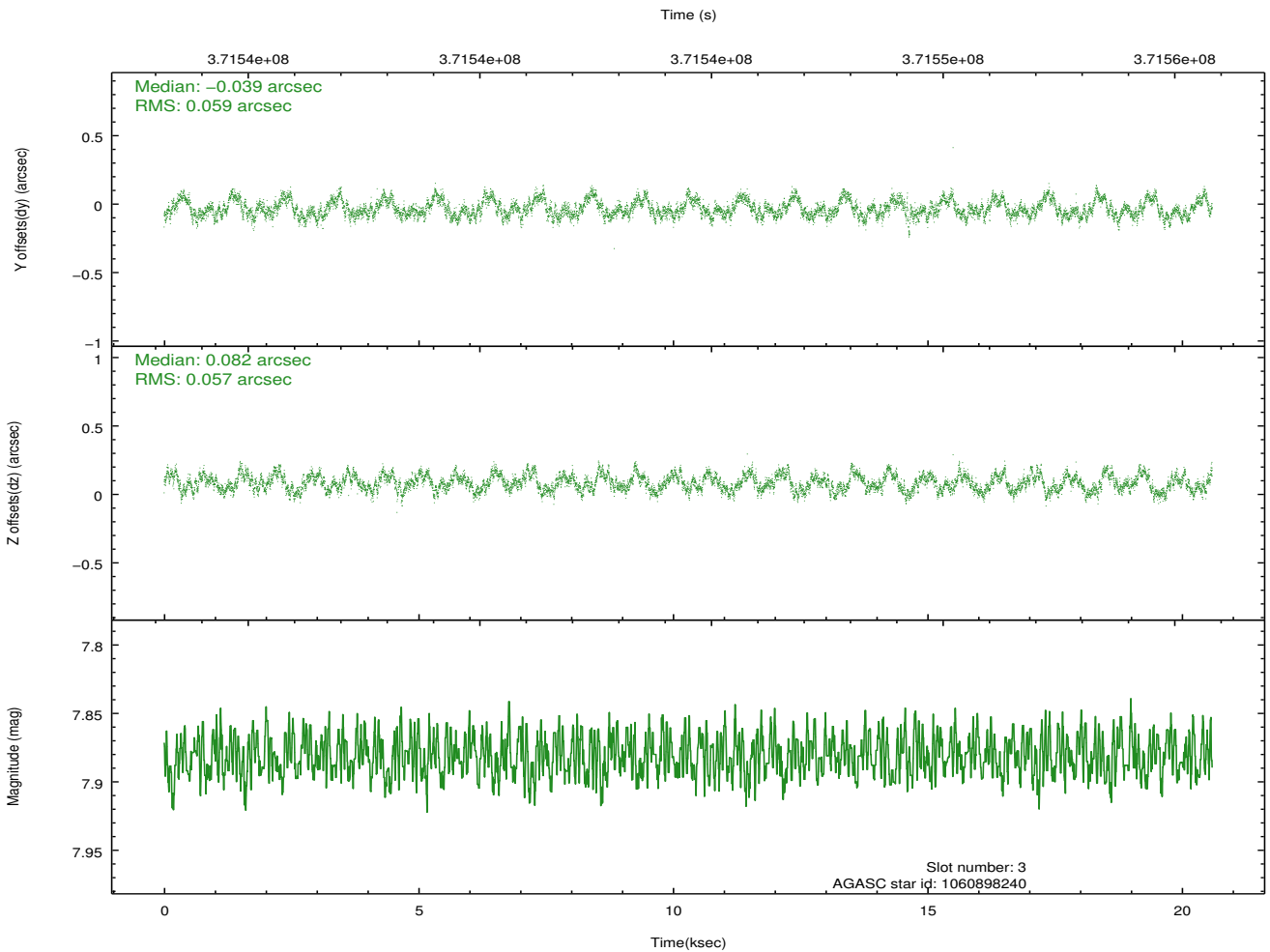
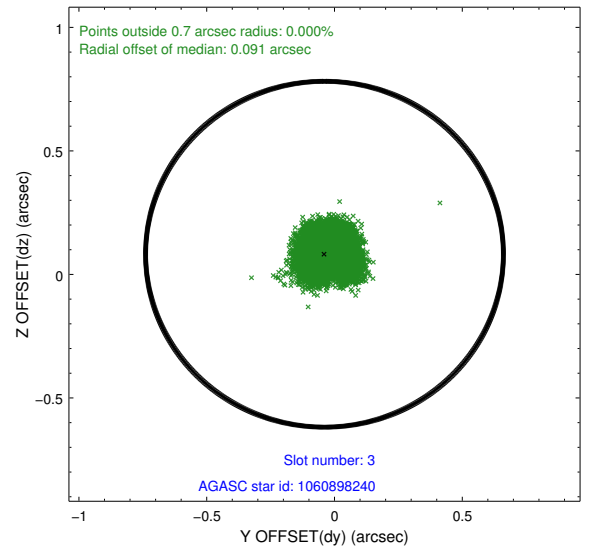
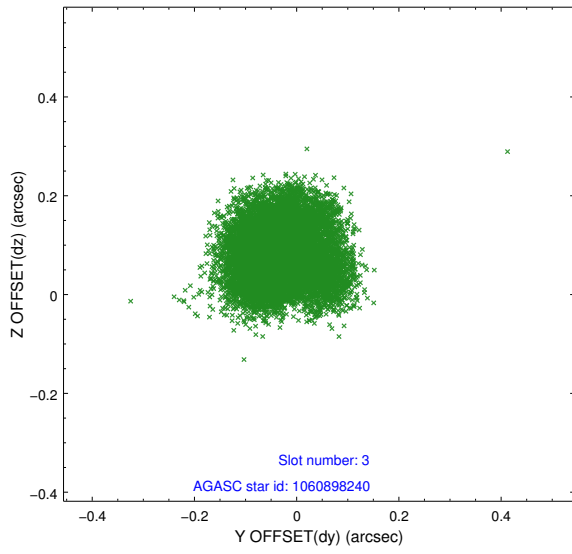


Slot Statistics

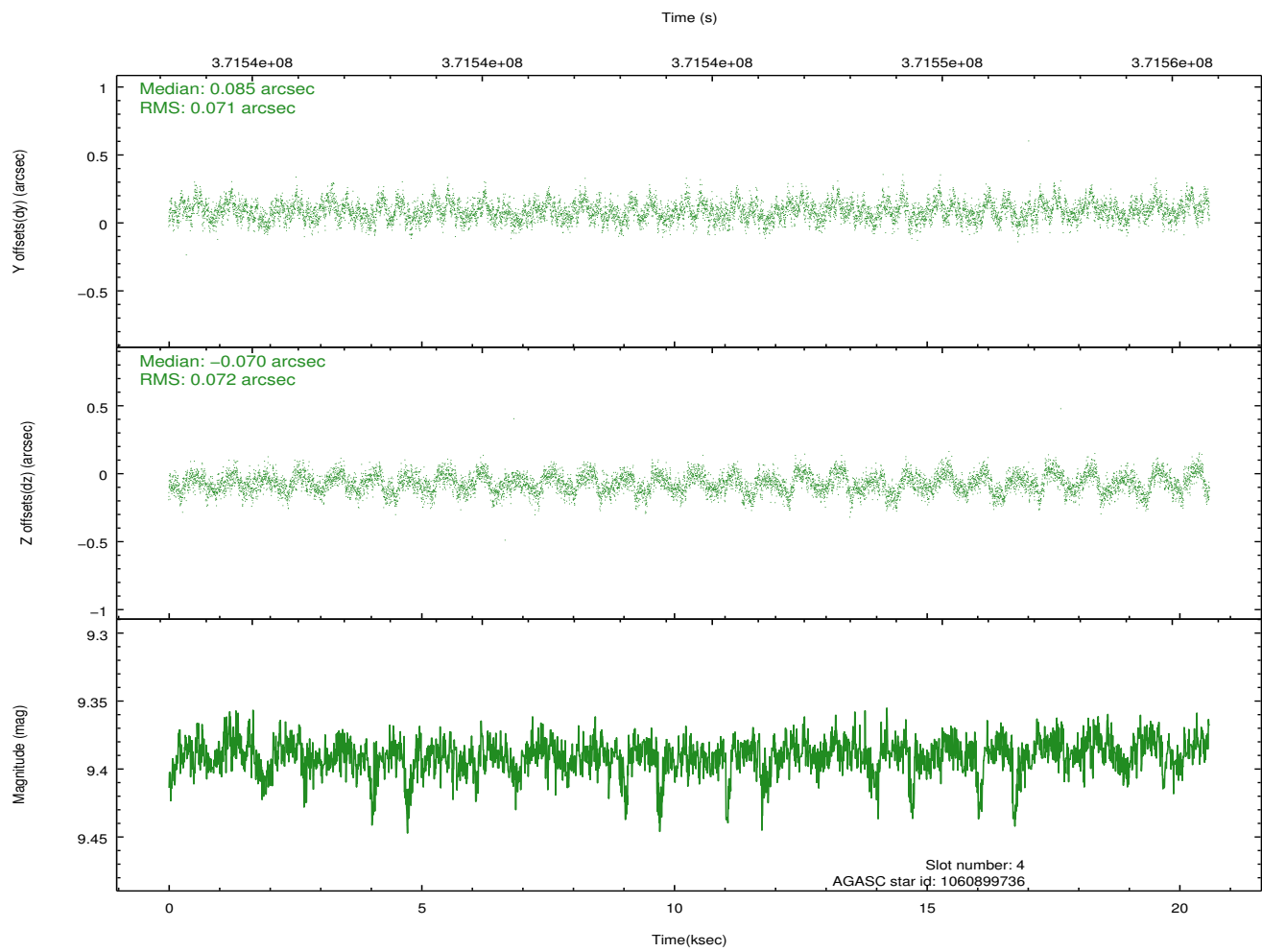
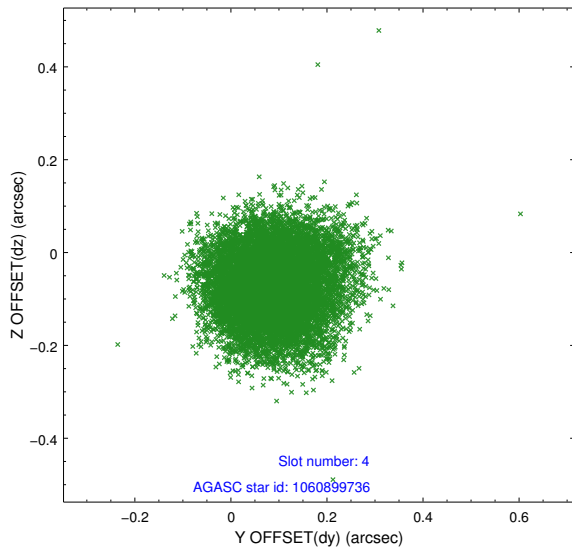
slot	status	id	mag	n_pts	med_dy	med_dz	dr1	dr2	ra	dec	mean_y	mean_z
0	FID	ACIS-I-1	6.99	5023	0.092	-0.070	0.008	0.013	0.000000	0.000000	928.41	-996.62
1	FID	ACIS-I-5	6.97	5022	-0.233	0.083	0.010	0.018	0.000000	0.000000	-1819.97	900.85
2	FID	ACIS-I-6	7.00	5023	0.050	0.057	0.009	0.017	0.000000	0.000000	393.66	1545.58
3	GUIDE	1060898240	7.88	10043	-0.039	0.082	0.089	0.136	84.284698	-50.408719	-463.26	-2258.15
4	GUIDE	1060899736	9.39	10037	0.085	-0.070	0.109	0.170	82.882261	-49.324117	2026.29	2172.75
5	GUIDE	1060903184	9.06	10035	-0.007	0.118	0.083	0.135	84.153090	-49.579220	2230.67	-932.81
6	GUIDE	1060906824	7.05	10046	-0.116	-0.148	0.056	0.092	82.626321	-50.099887	-790.42	1703.56
7	GUIDE	1060906856	8.91	10038	0.068	0.017	0.075	0.125	82.563664	-50.533678	-2294.97	1262.37

2.4 Star Slots

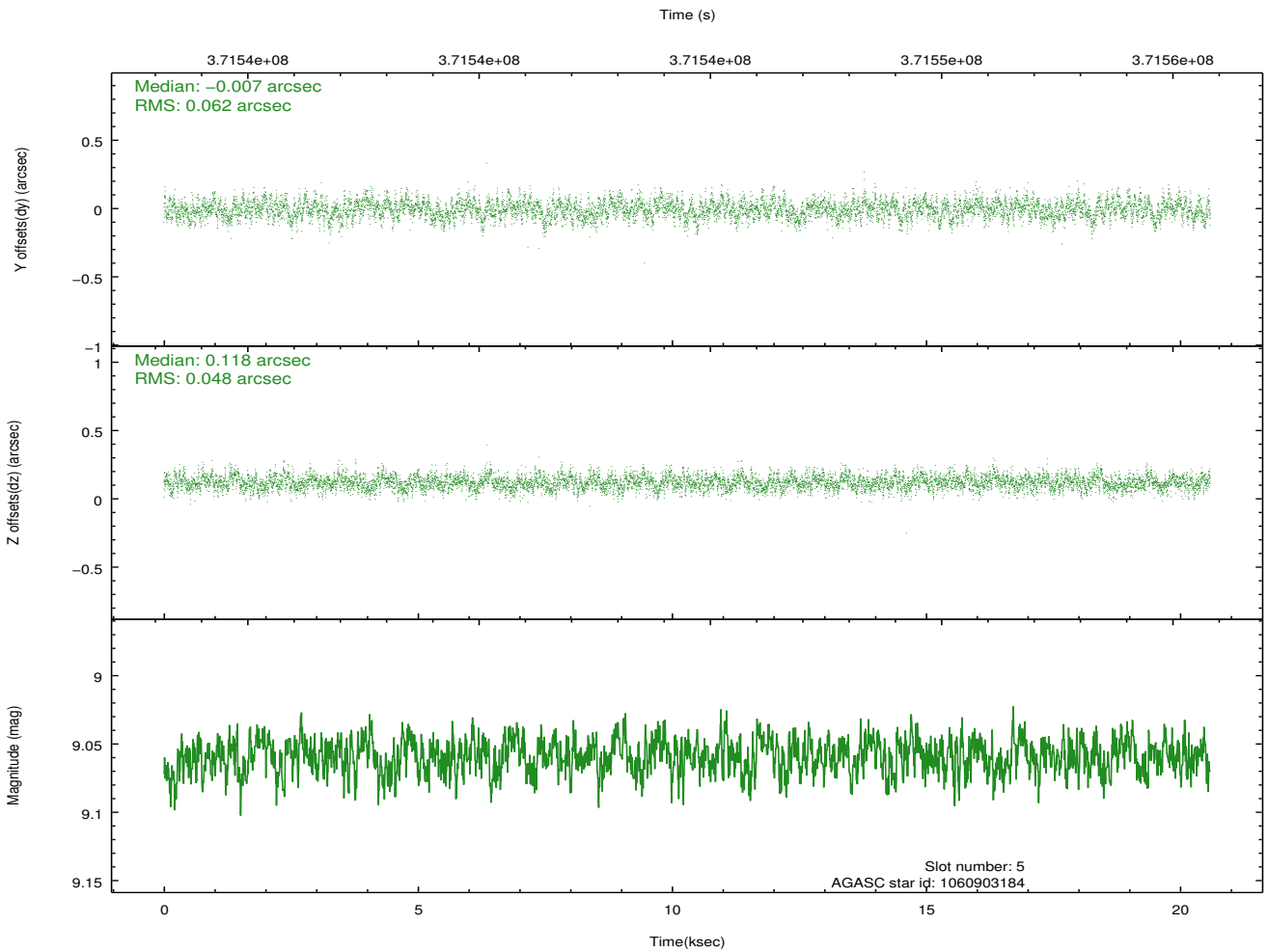
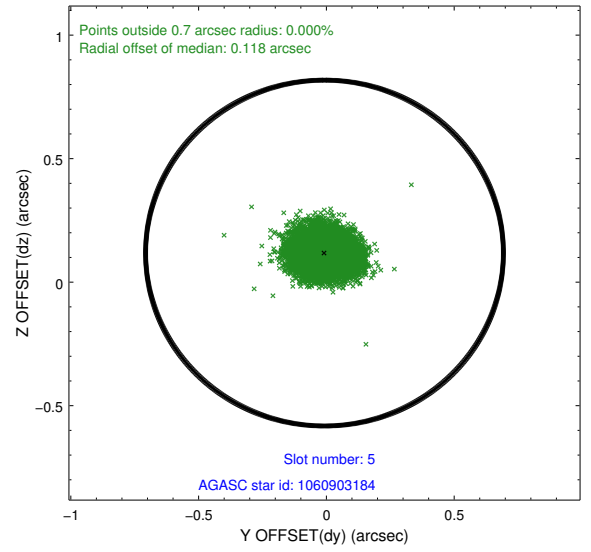
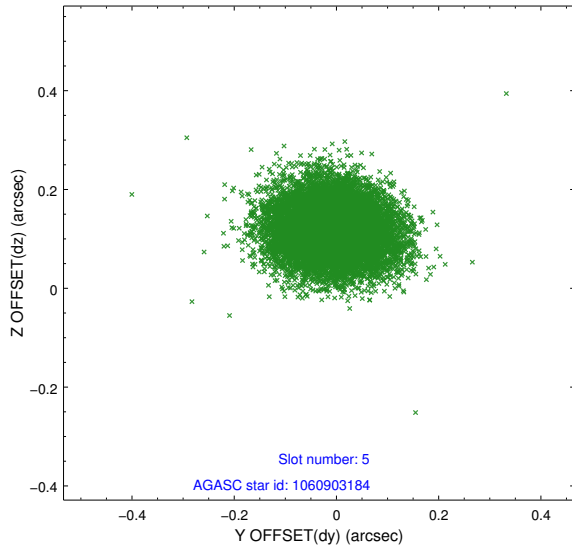
2.4.1 Slot 3



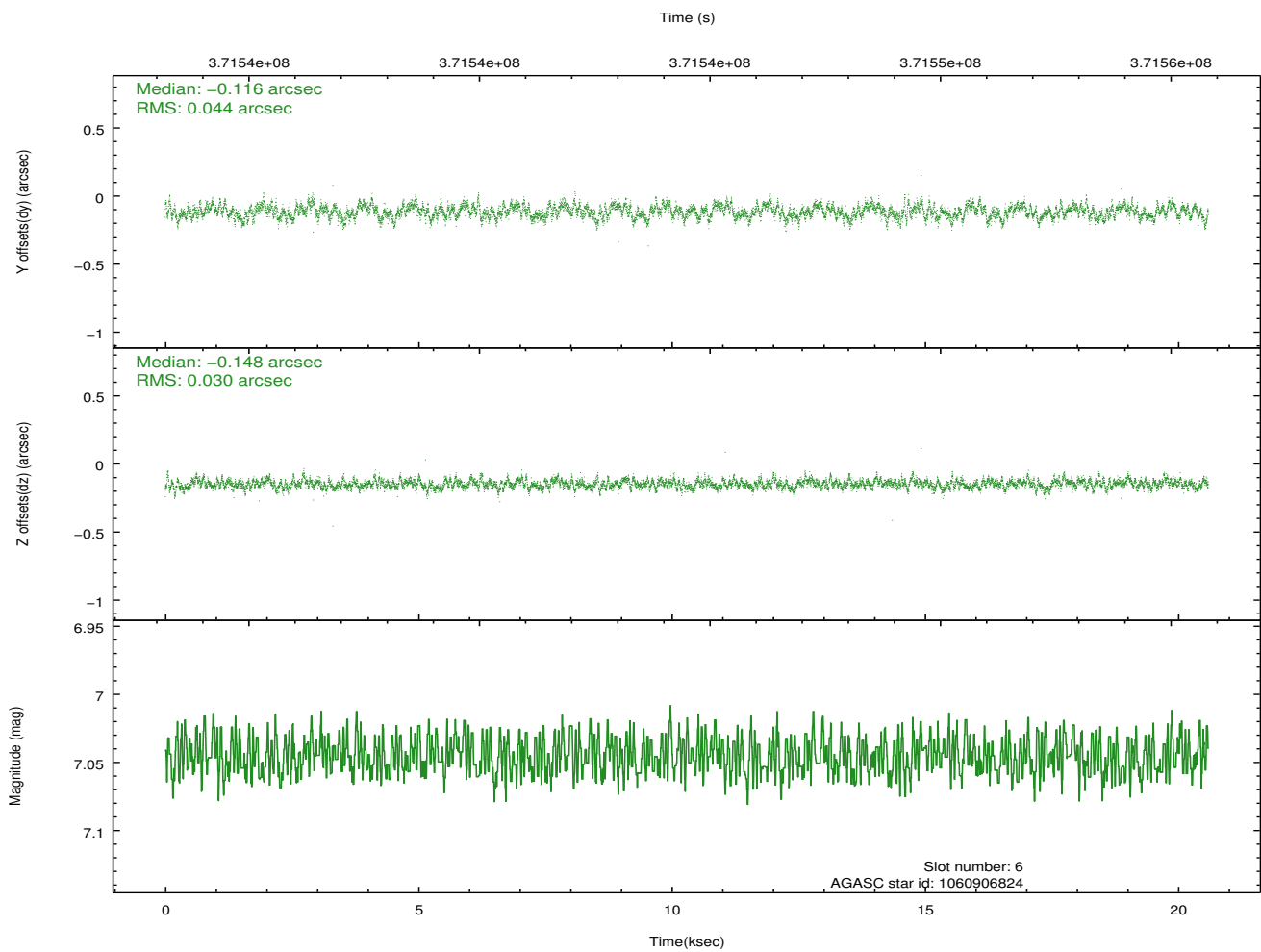
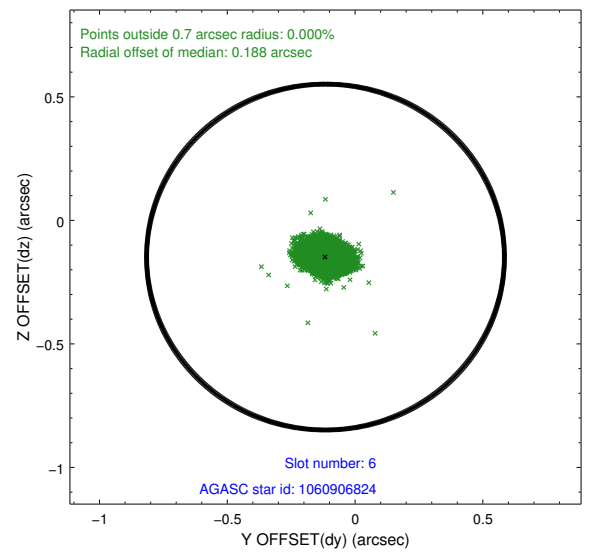
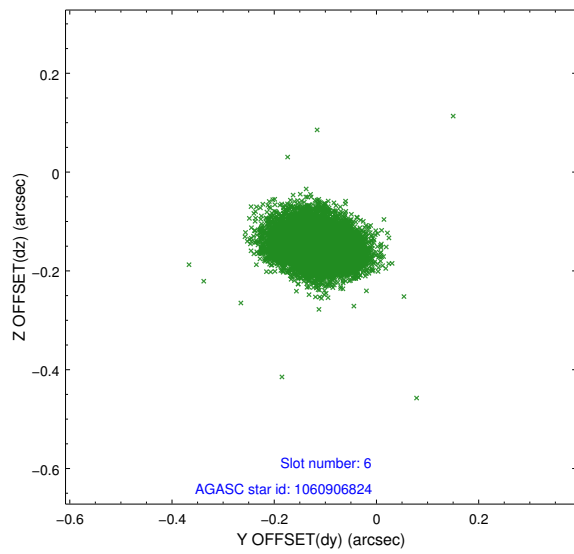
2.4.2 Slot 4



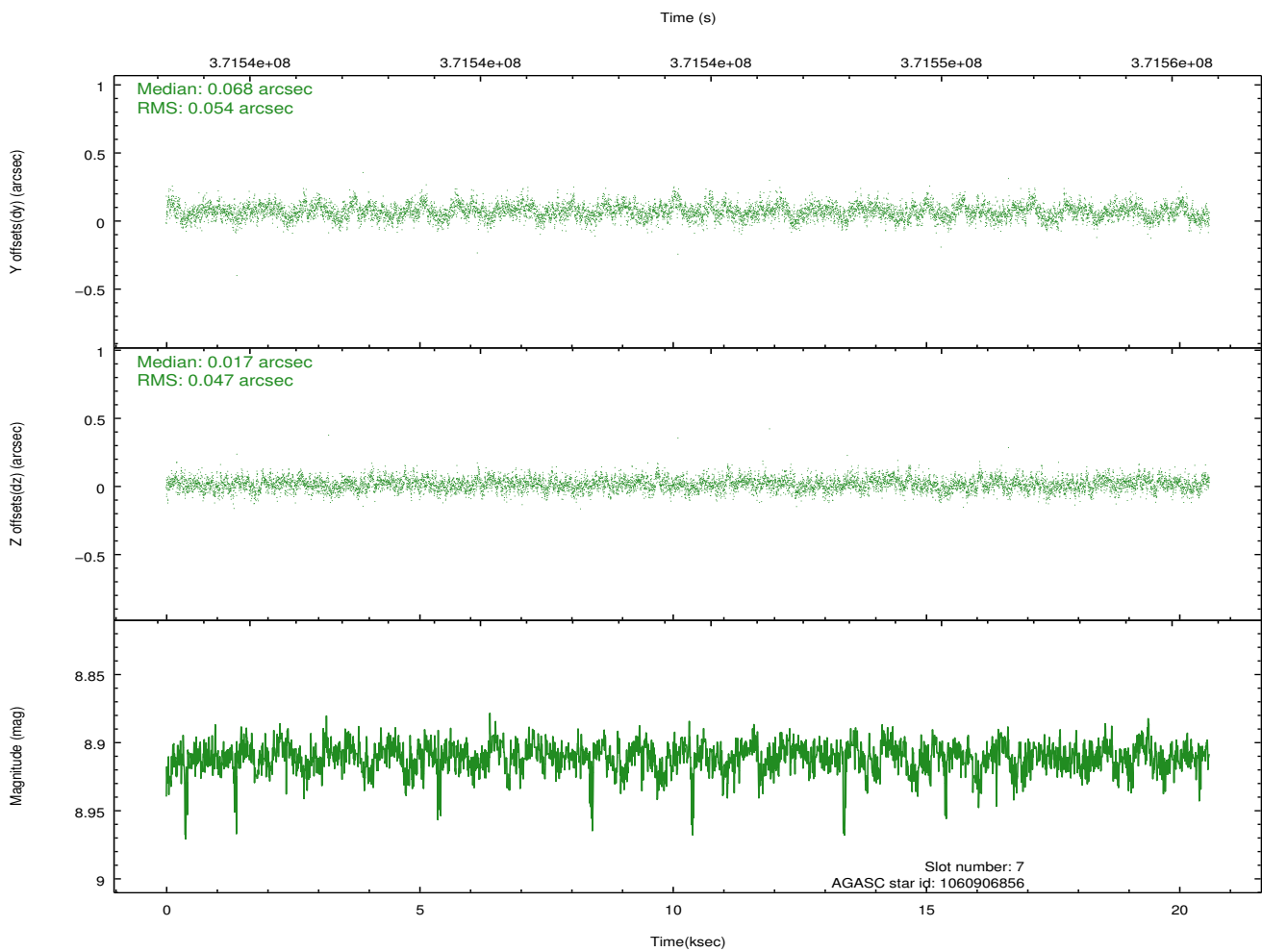
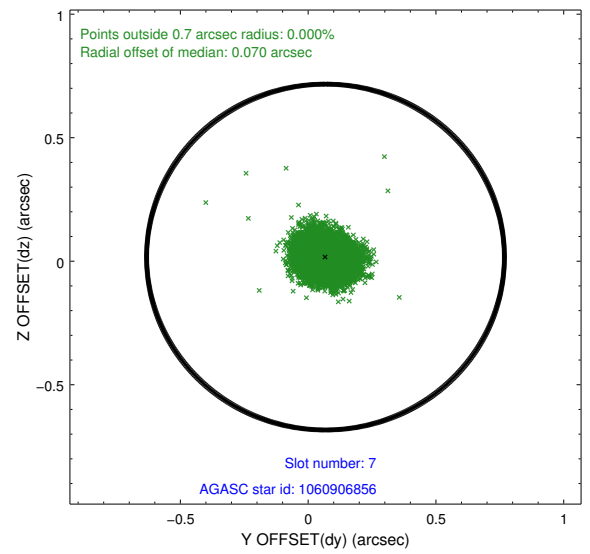
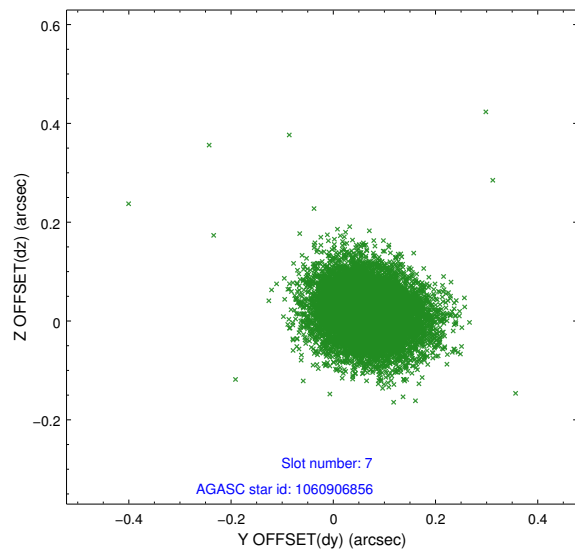
2.4.3 Slot 5



2.4.4 Slot 6

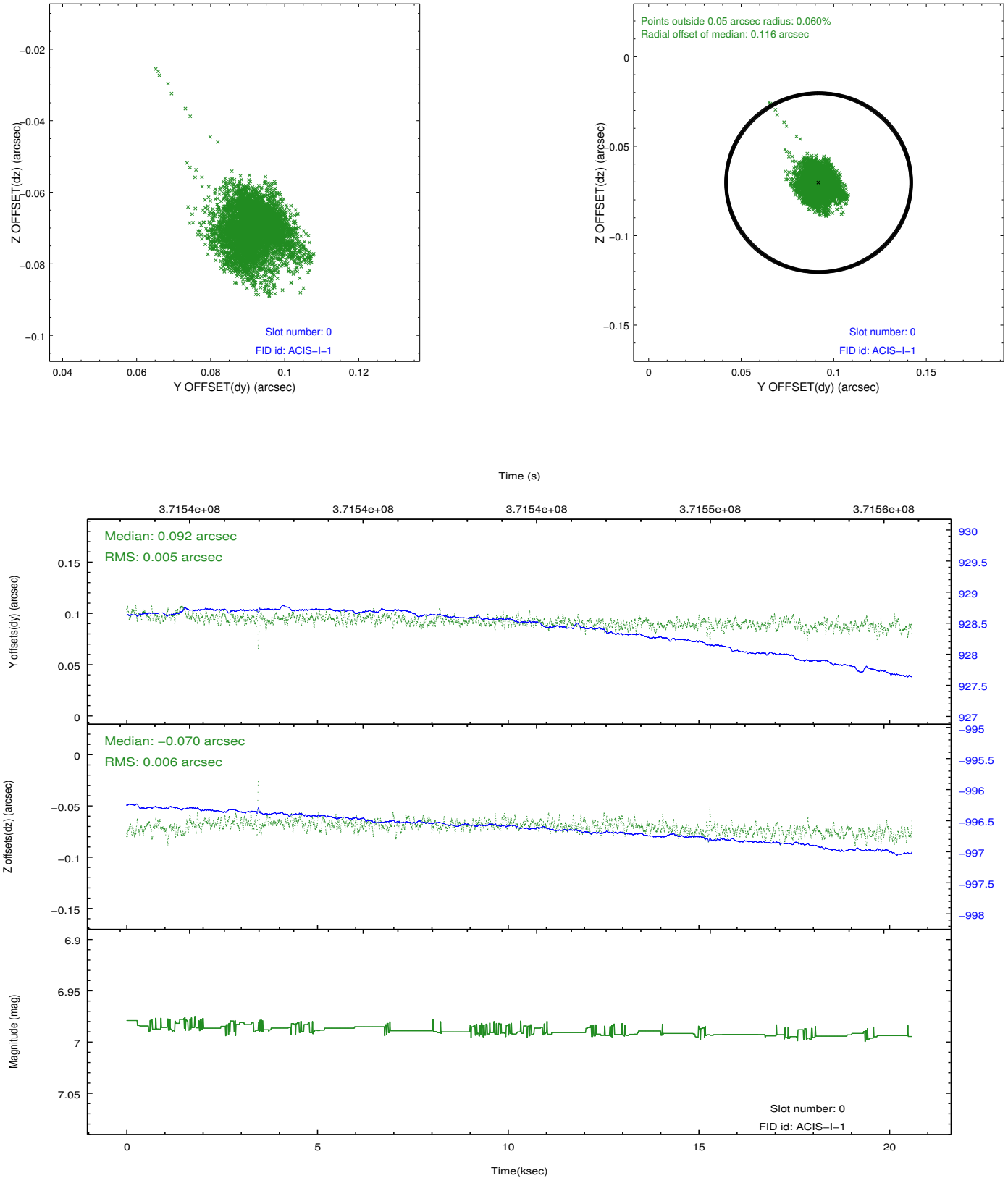


2.4.5 Slot 7

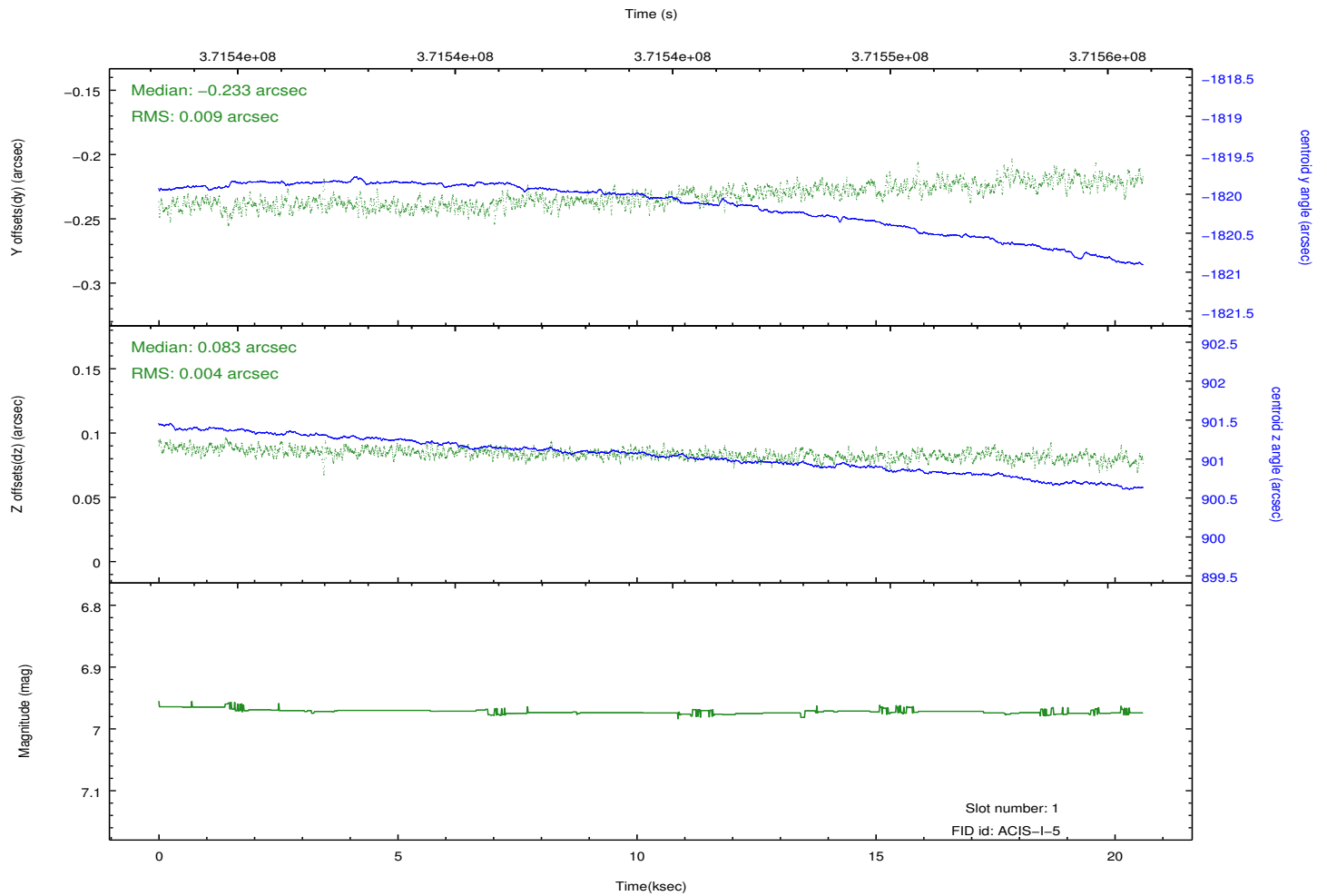
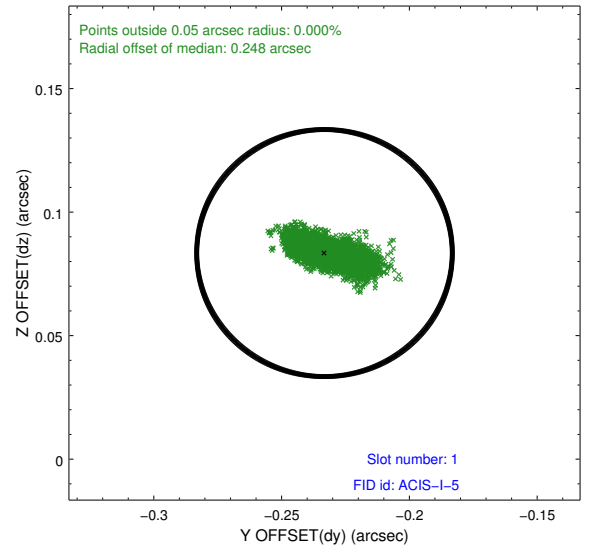
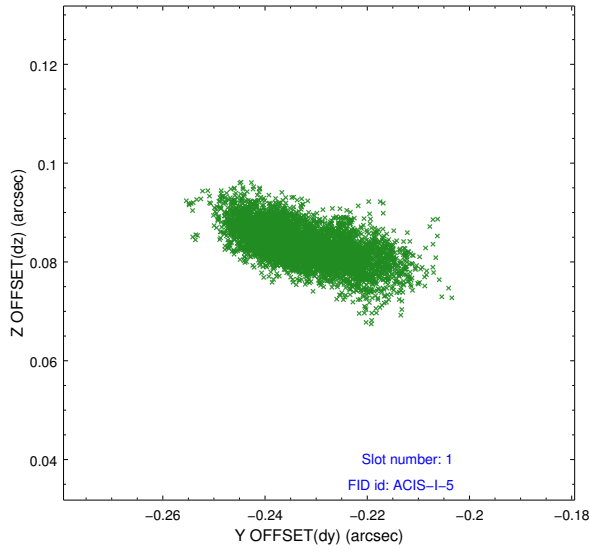


2.5 FID Slots

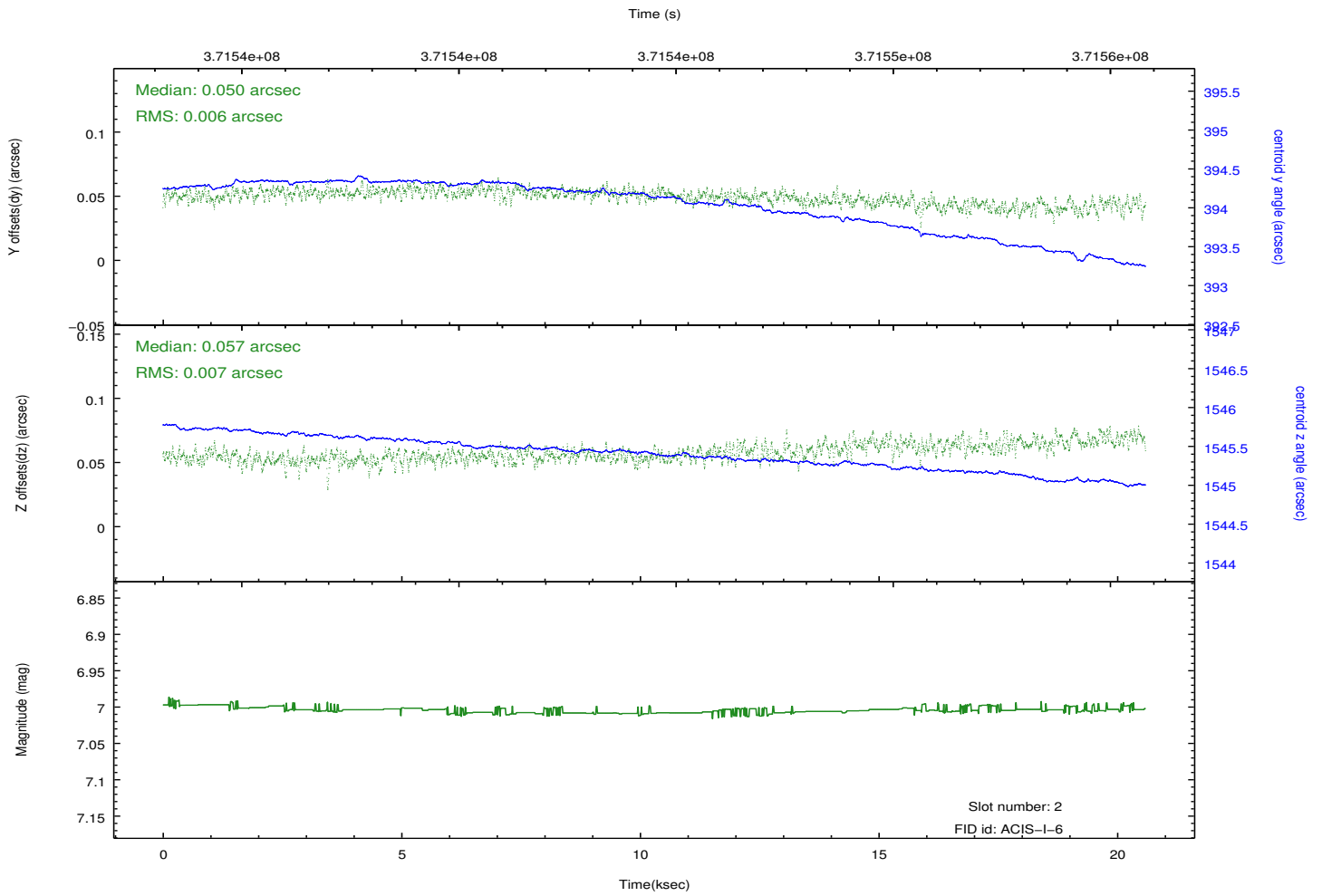
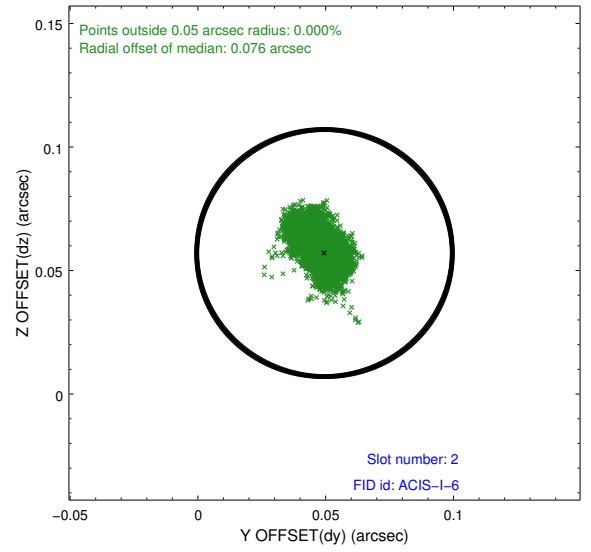
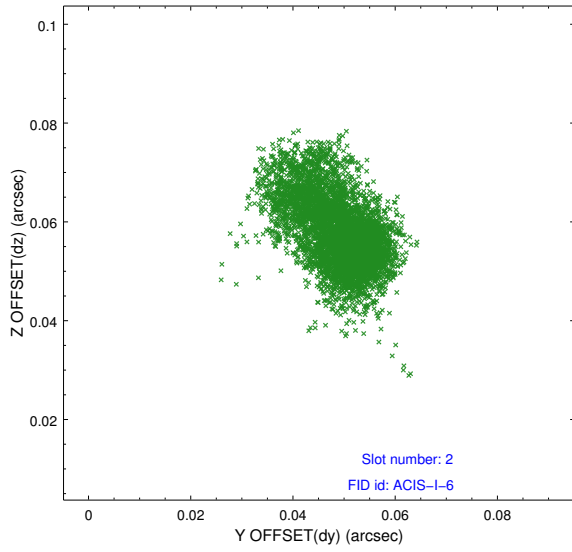
2.5.1 Slot 0



2.5.2 Slot 1



2.5.3 Slot 2



A Summary

A.1 Status

V&V Scientist	Jen Lauer
V&V Date (YYYY-MM-DD)	2012.06.19
V&V Edition	1
V&V Disposition and Status	OK
V&V Charge Time	19.500695235074

A.2 Comments

Charge time for this ObsId remains at previous value of 19.500695235074 ks although with the current processing the charge time would have been 19.53612 ksec.