

V&V Reference Report

L2 ASCDS Version : 8.4.5

Observation 12201 - L2 Version 2
Chandra X-Ray Center

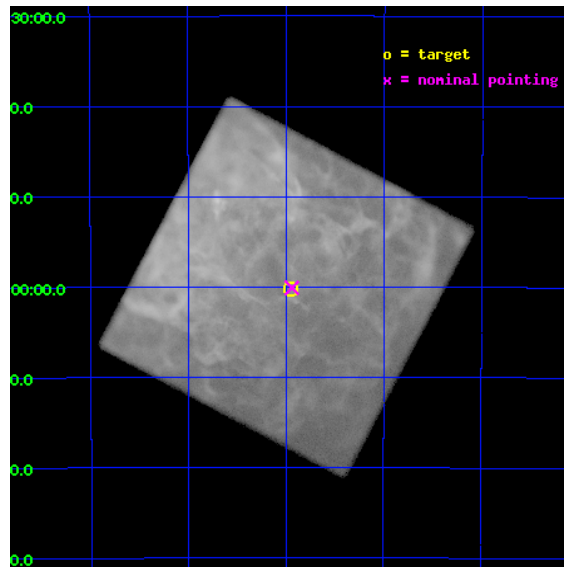
L2 Processing Date : Jul 1 2012

Contents

1	Front	2
2	OBI	3
2.1	OBI	3
2.1.1	Images	3
2.1.2	Parameters	4
2.1.3	Events	4
2.2	Compared Parameters	5
2.3	Aspect	6
2.4	Star Slots	9
2.4.1	Slot 3	9
2.4.2	Slot 4	10
2.4.3	Slot 5	11
2.4.4	Slot 6	12
2.4.5	Slot 7	13
2.5	FID Slots	14
2.5.1	Slot 0	14
2.5.2	Slot 1	15
2.5.3	Slot 2	16
A	Summary	17
A.1	Status	17
A.2	Comments	17

1 Front

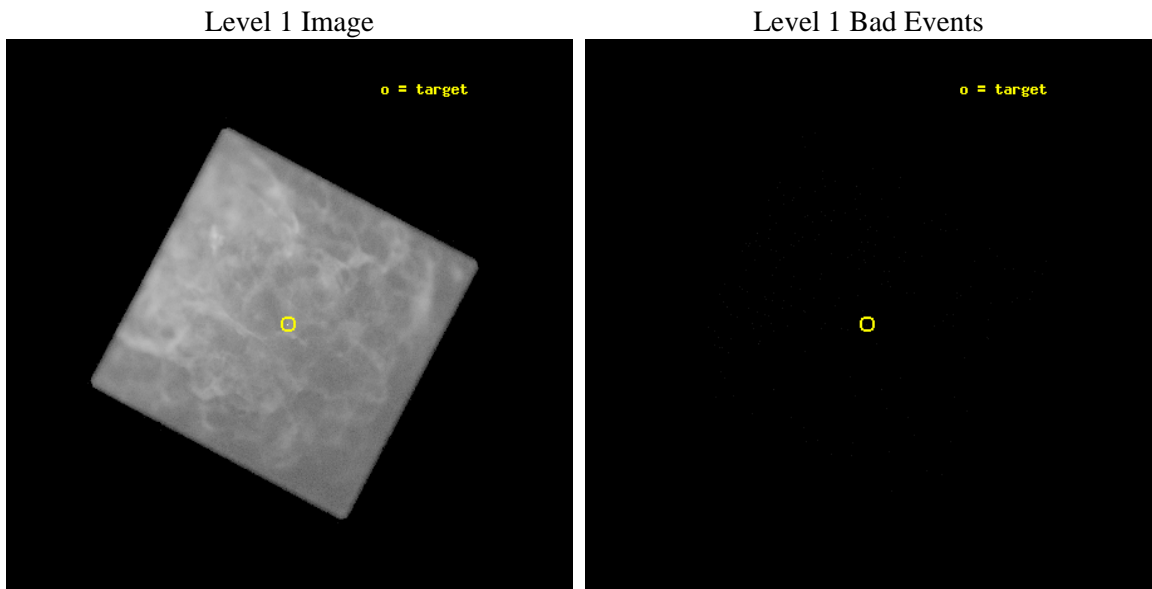
seq_num	401140	Sequence number
obs_id	12201	Observation id
title	Confirming the Proper Motion of the Neutron Star in Puppis-A	Propo
observer	Dr. Peter Predehl	Principal investigator
object	RXJ0822-4300	Source name
ra_targ	125.489583	Observer's specified target RA [deg]
dec_targ	-43.004361	Observer's specified target Dec [deg]
ra_nom	125.48507595218	Nominal RA [deg]
dec_nom	-43.001708879905	Nominal Dec [deg]
roll_nom	162.96387250508	Nominal Roll [deg]
revision	2	Processing version of data
ontime	38680.683219612	[s]
livetime	17808.557924763	Ontime multiplied by DTCOR
l2events	6277025	Number of level 2 events



2 OBI

2.1 OBI

2.1.1 Images



2.1.2 Parameters

obi_num	1	Obi number	sched_exp_time	38500.000000	[s] Scheduled observation exposure time
ascdsver	8.4.5	Processing system revision	ontime	38680.683229625	[s]
caldbver	4.5.0	 	l1events	7172564	Number of level 1 events
date	2012-07-01T18:00:50	Date and time of file creation			
revision	2	Processing version of data			

2.1.3 Events

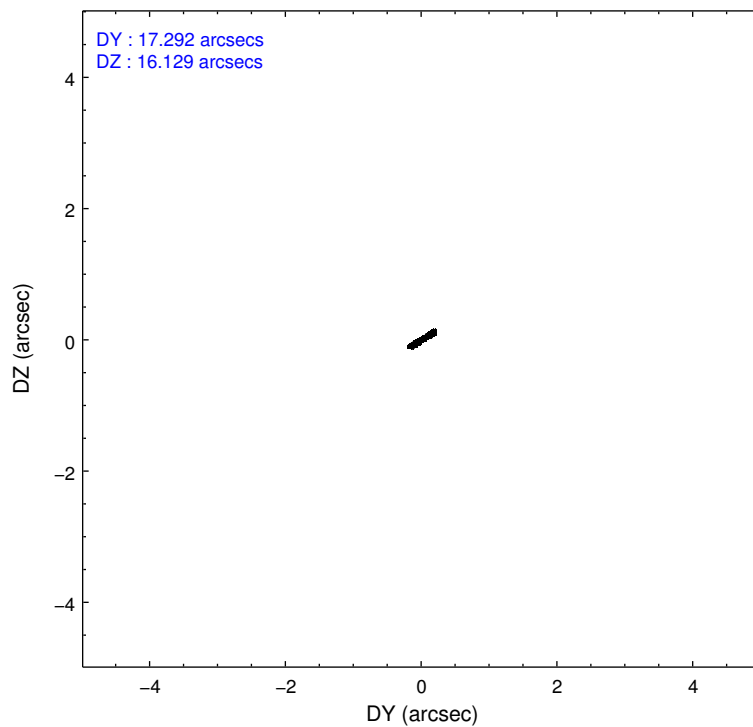
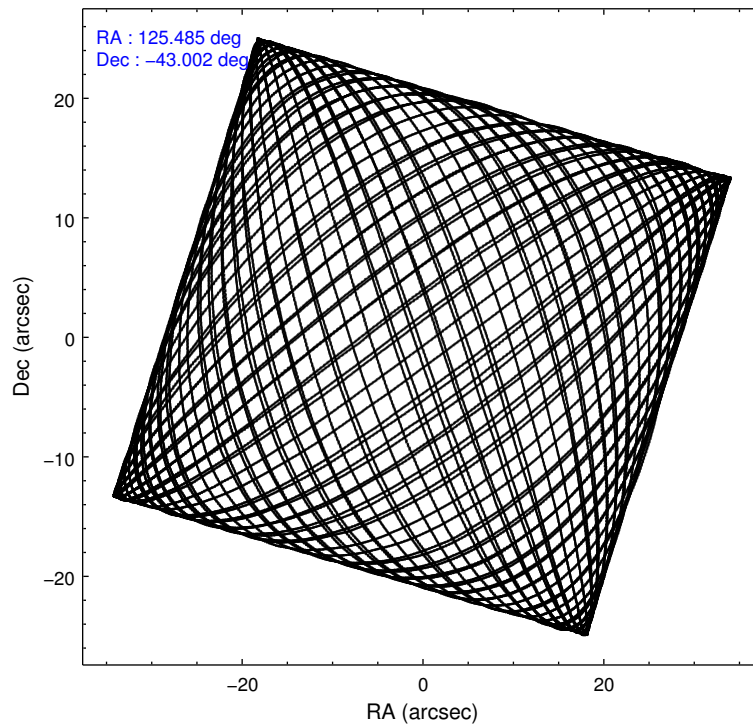
Level 1 Events

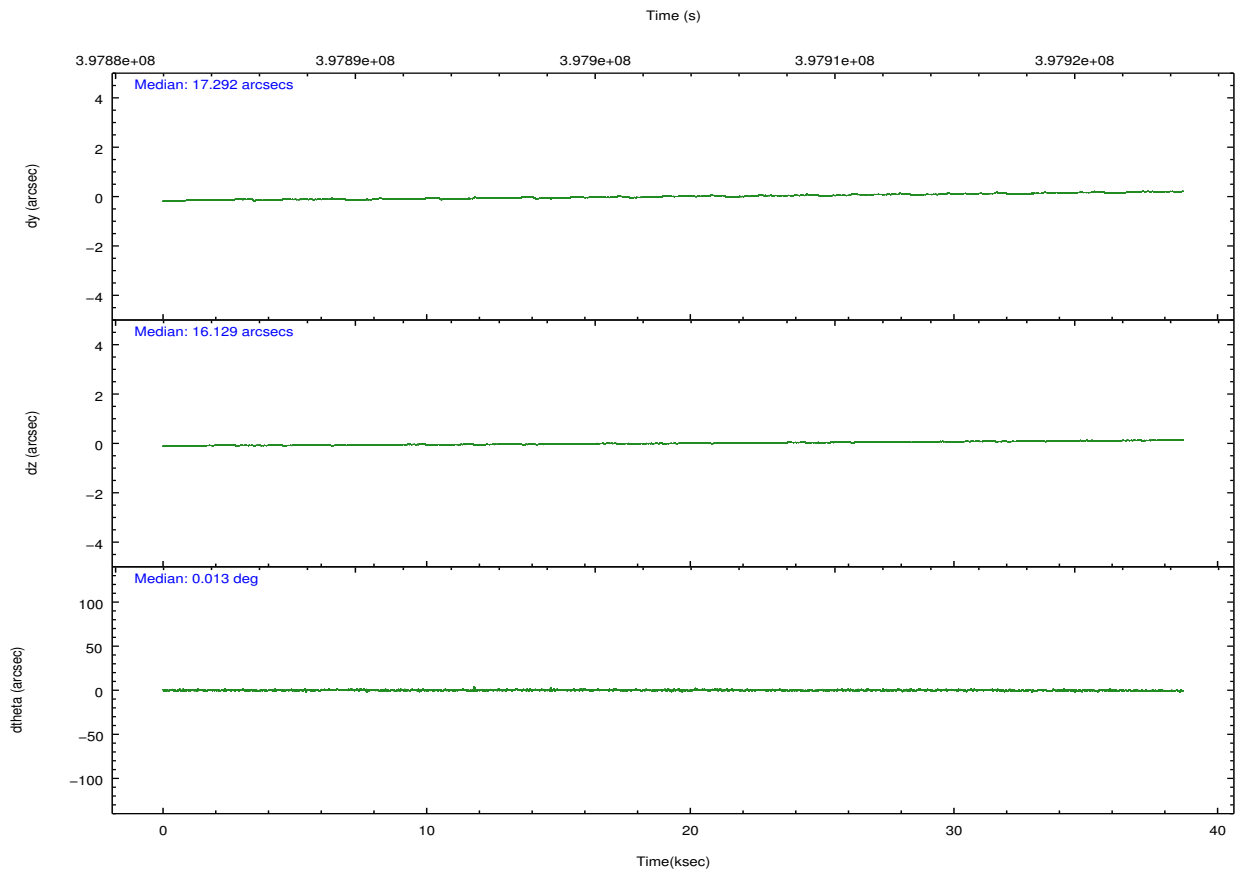
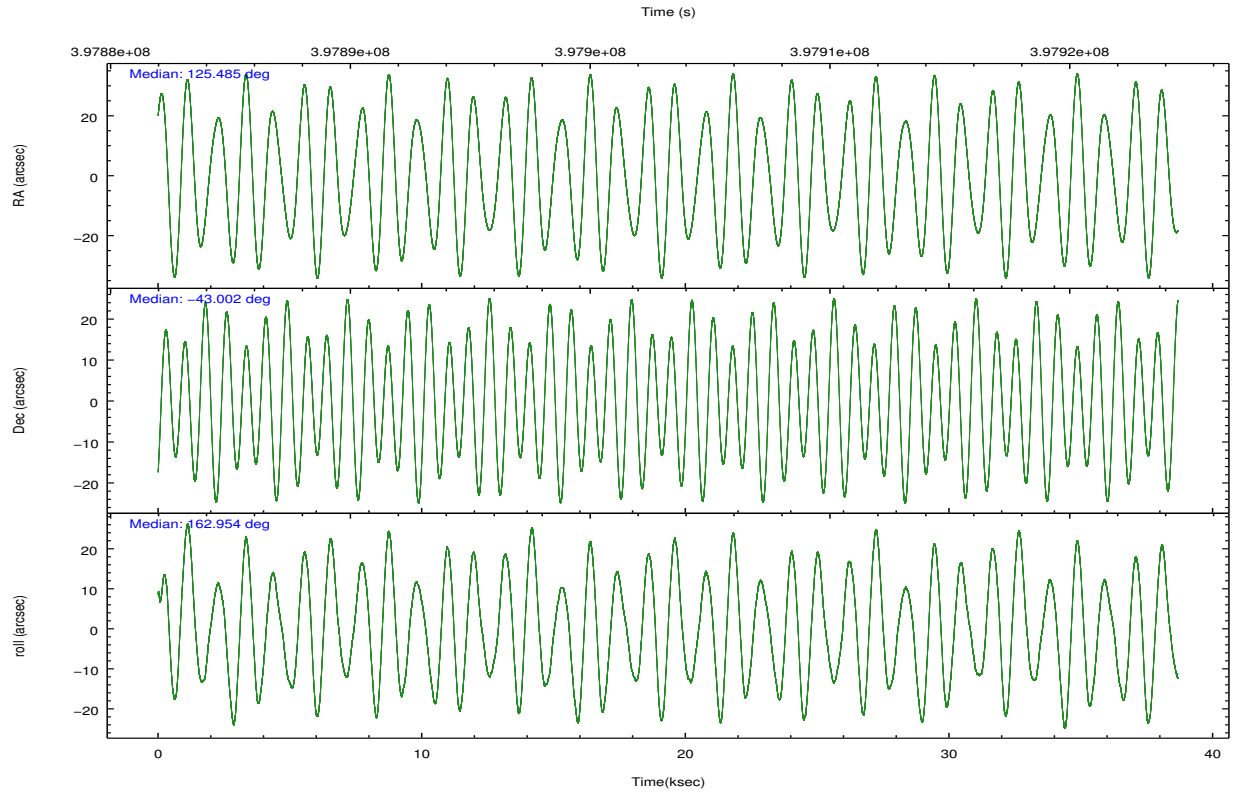
	segment 0
level 1 events	7172564
rejected events	40226
rejected %	0%

2.2 Compared Parameters

Parameter	Planned	Actual	Parameter	Planned	Actual
Instrument	HRC	HRC	Obspar format version number	7	7
Detector	HRC-I	HRC-I	Obspar file type	PREDICTED	ACTUAL
Grating	NONE	NONE	Obspar update status	NONE	UPDATED
Data mode	OBSERVING	OBSERVING			
Observation mode	POINTING	POINTING			
[deg] Pointing RA	125.521103	125.485075952184			
[deg] Pointing Dec	-42.994999	-43.0017088799048			
[deg] Pointing Roll	163.083937	162.963872505079			
[mm] SIM focus pos	-1.040293	-1.038866356238299			
[mm] SIM defocus	0	0.001426264420575141			
[mm] SIM translation stage pos	126.985494	126.9829799899862			
[mm] SIM translation stage offset	0	0.002508901615314585			
[s] Observation start time (MET)	397884091.184000	397883714.78776			
Observation start date	2010-08-11T03:20:25	2010-08-11T03:15:14			
[s] Observation end time (MET)	397922591.184000	397923526.30229			
Observation end date	2010-08-11T14:02:05	2010-08-11T14:18:46			

2.3 Aspect



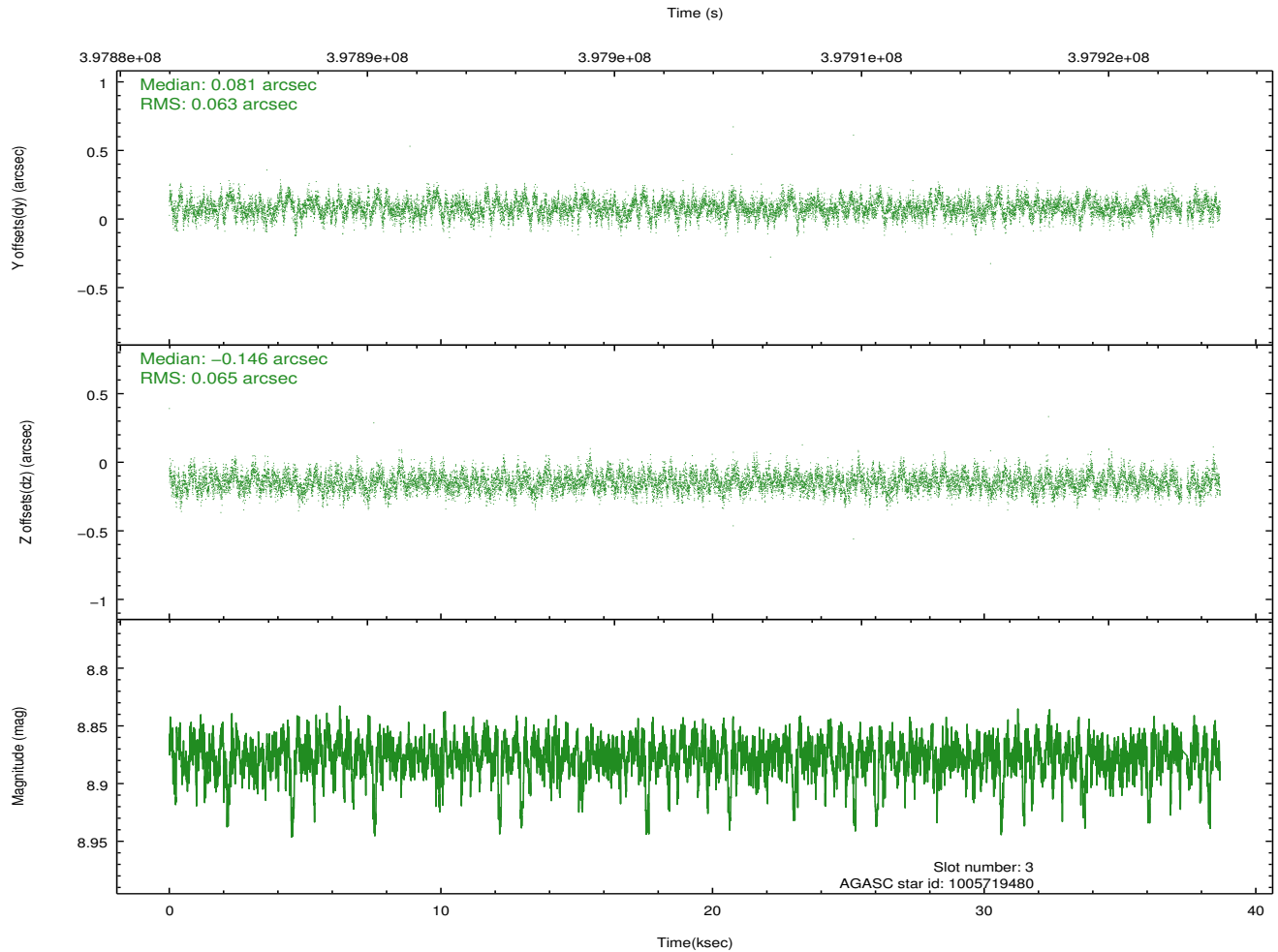
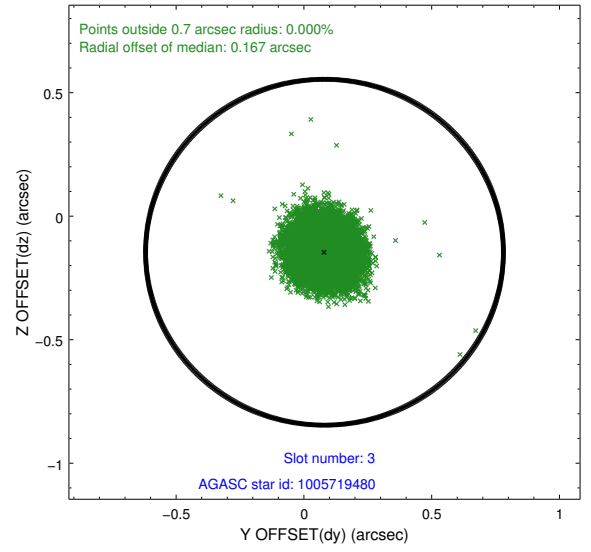
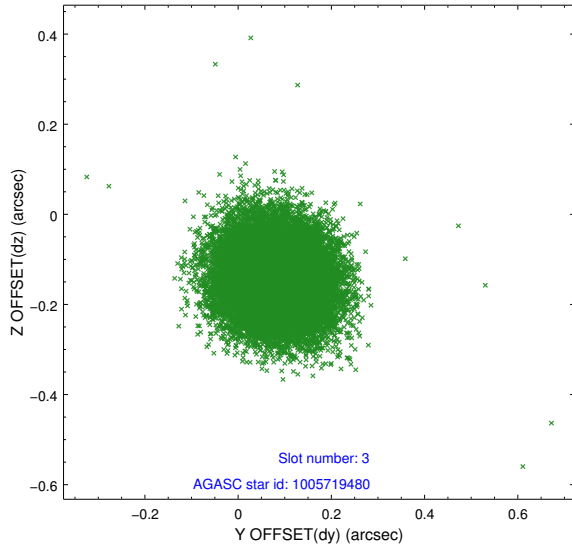


Slot Statistics

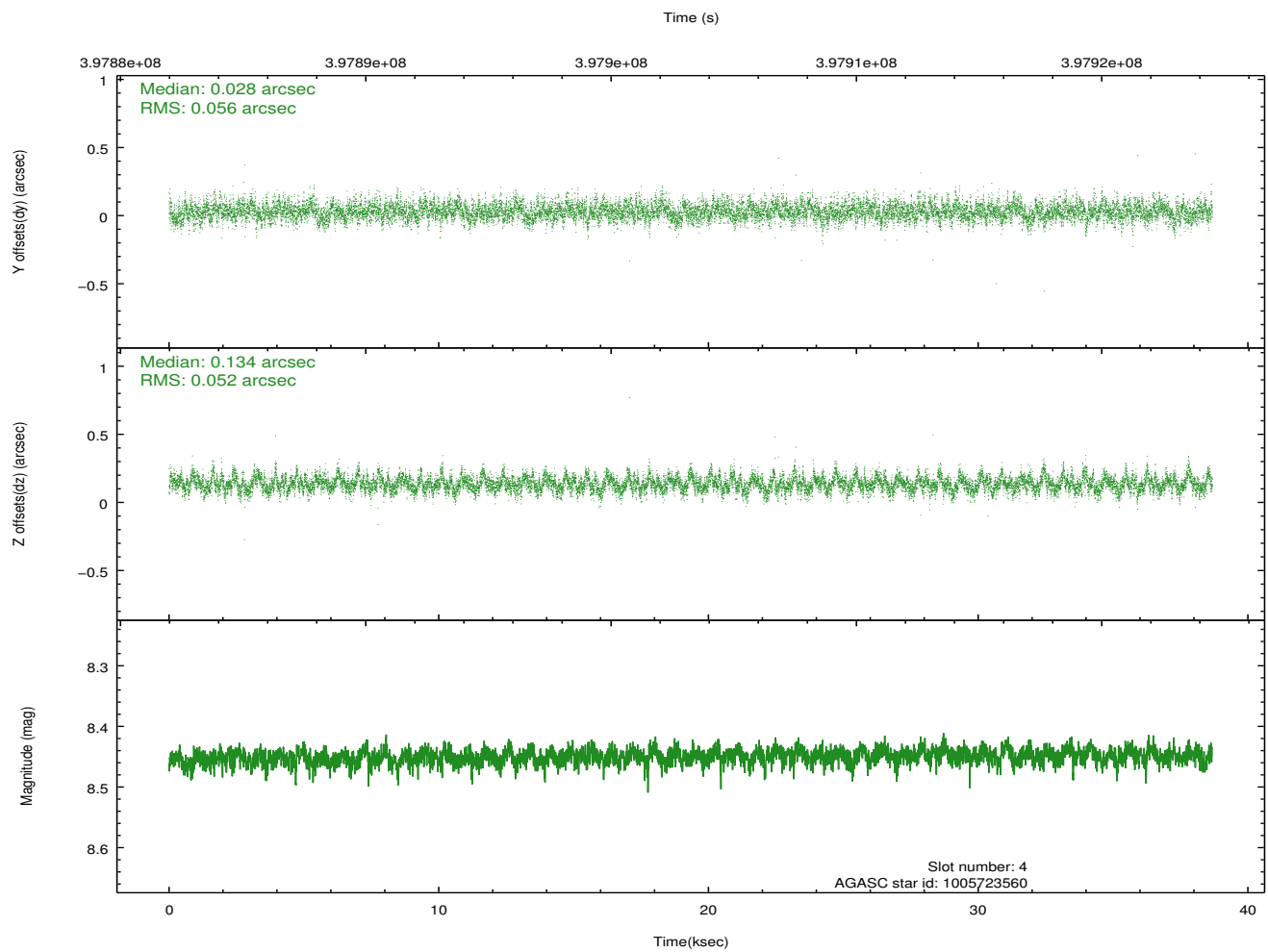
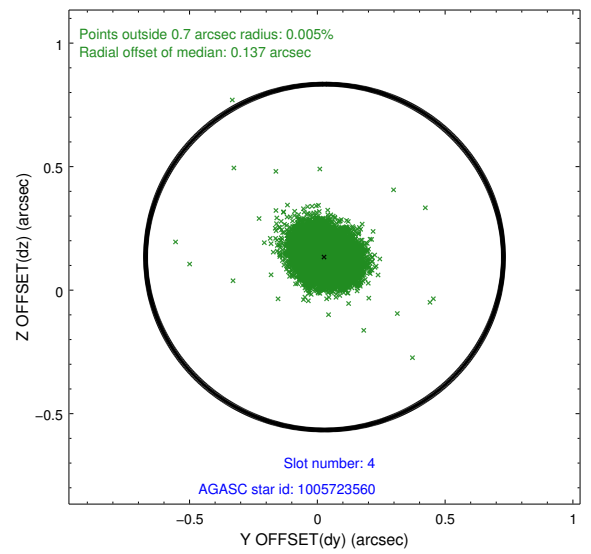
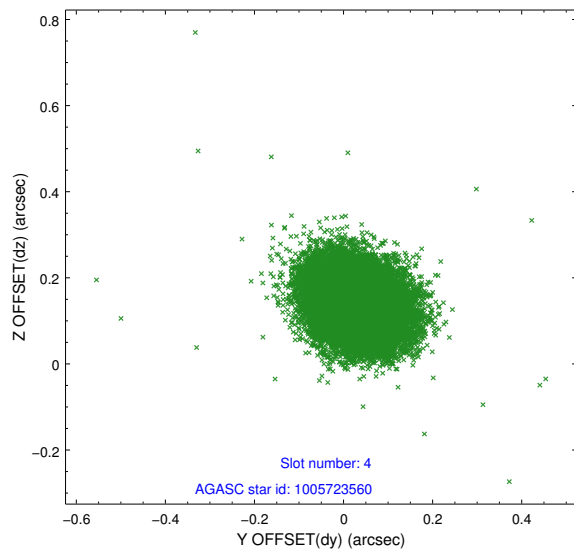
slot	status	id	mag	n_pts	med_dy	med_dz	dr1	dr2	ra	dec	mean_y	mean_z
0	FID	HRC-I-1	6.96	9435	-0.131	-0.060	0.008	0.014	0.000000	0.000000	-773.39	-1304.25
1	FID	HRC-I-2	7.00	9434	0.183	-0.048	0.008	0.015	0.000000	0.000000	839.47	-1306.06
2	FID	HRC-I-4	6.96	9433	0.065	0.016	0.006	0.011	0.000000	0.000000	1269.85	997.71
3	GUIDE	1005719480	8.88	18776	0.081	-0.146	0.097	0.155	125.476619	-43.605627	-528.86	2137.03
4	GUIDE	1005723560	8.45	18860	0.028	0.134	0.080	0.133	126.279097	-43.364629	-2287.66	704.61
5	GUIDE	1005724040	7.59	18860	-0.029	0.017	0.120	0.194	125.738175	-43.227880	-788.92	637.38
6	GUIDE	1005726872	7.39	18866	-0.083	-0.167	0.075	0.120	125.535449	-43.662820	-735.58	2289.21
7	GUIDE	1005219184	9.86	18739	0.007	0.163	0.193	0.315	125.451801	-42.433714	764.50	-1878.82

2.4 Star Slots

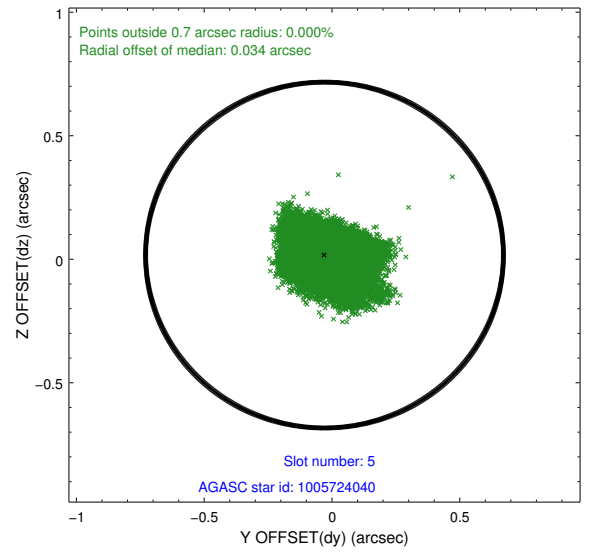
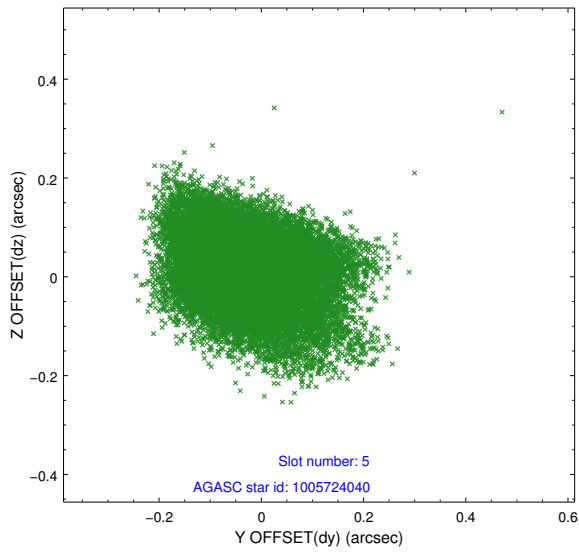
2.4.1 Slot 3



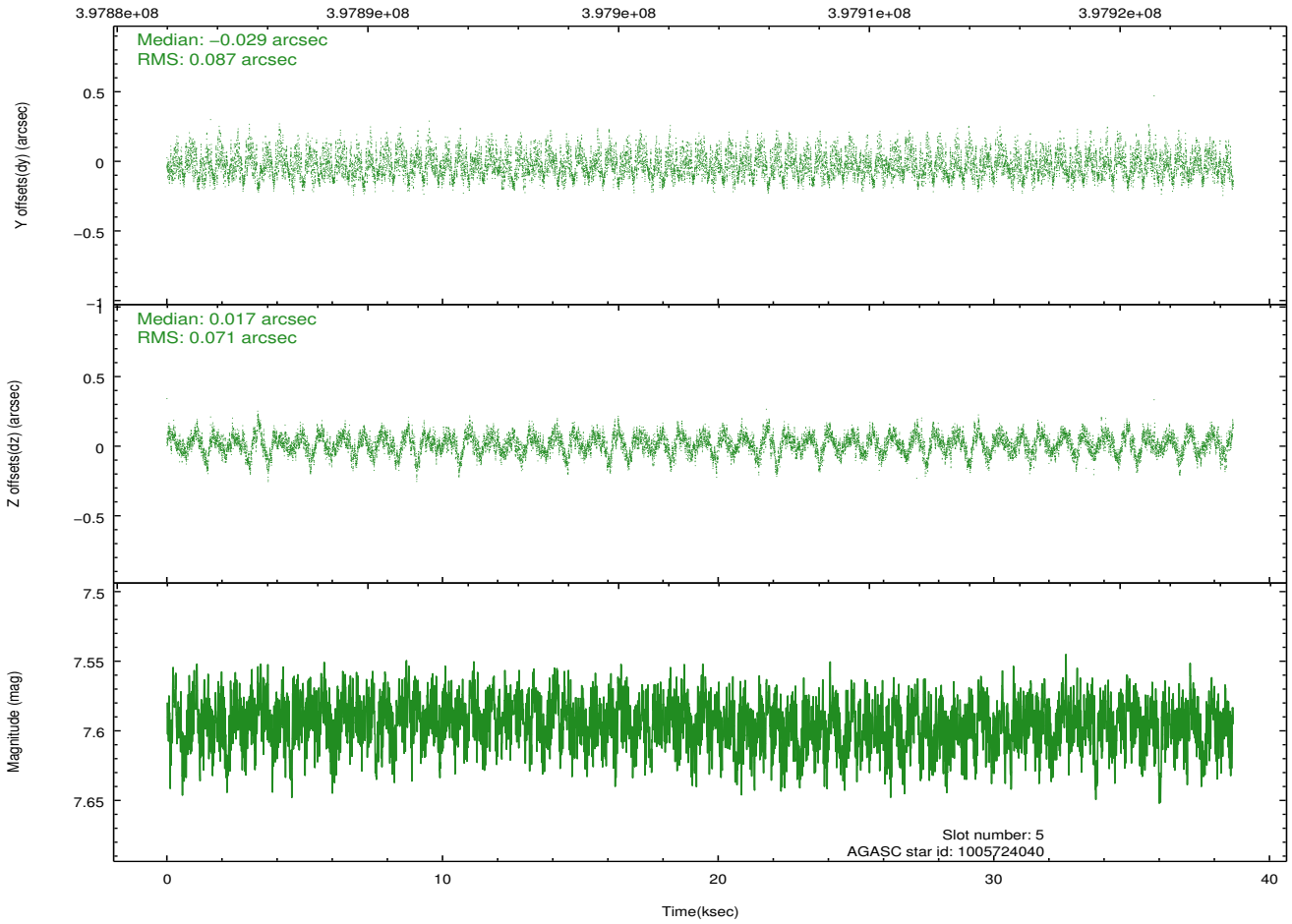
2.4.2 Slot 4



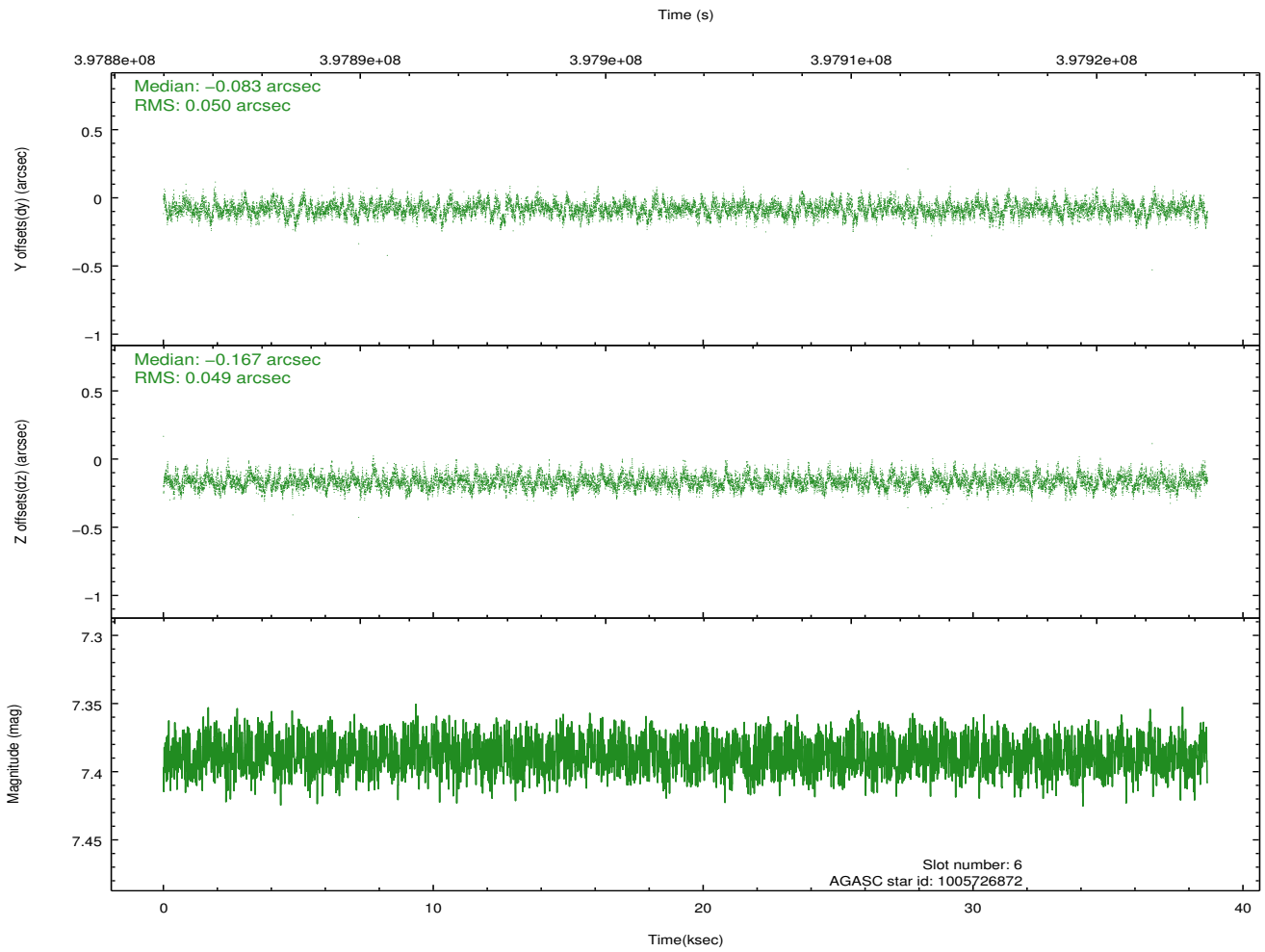
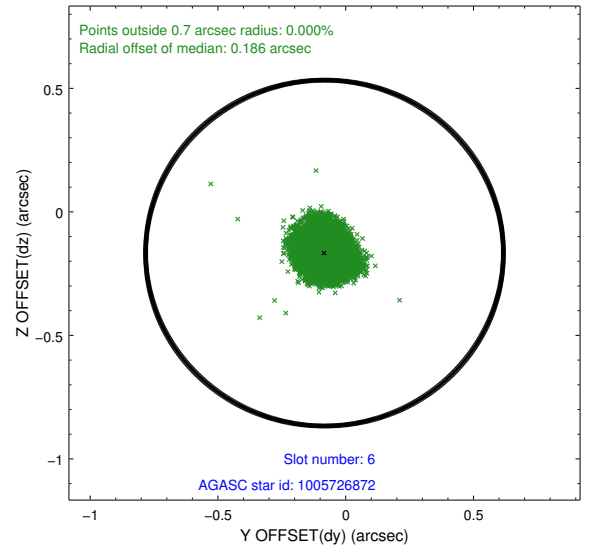
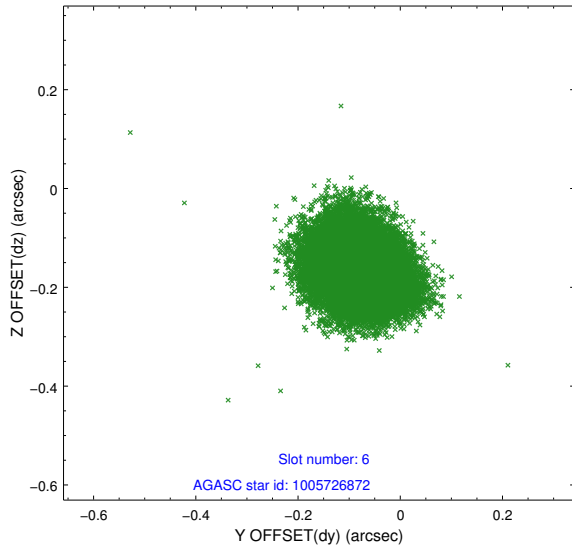
2.4.3 Slot 5



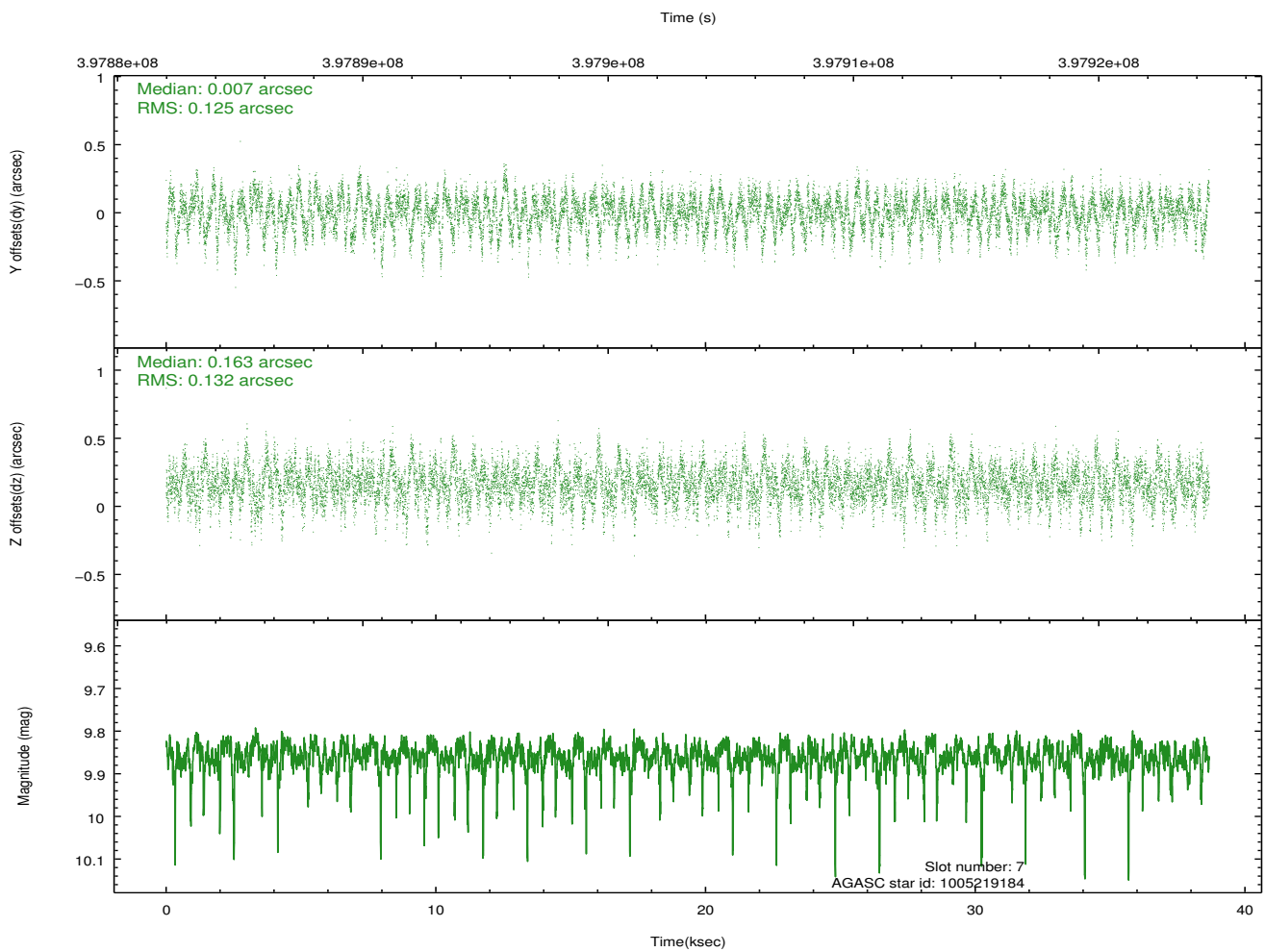
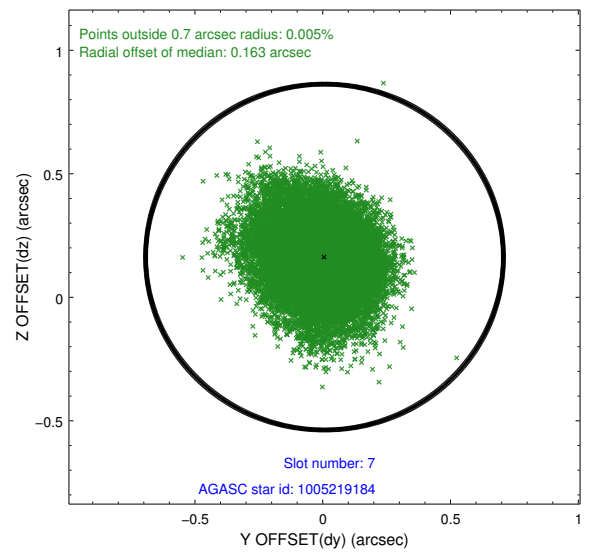
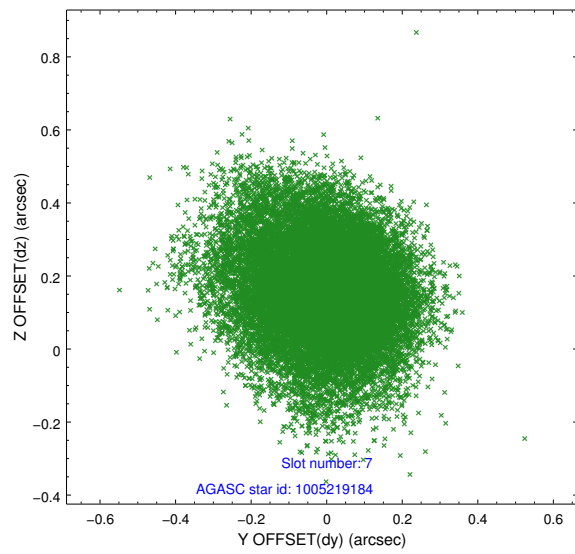
Time (s)



2.4.4 Slot 6

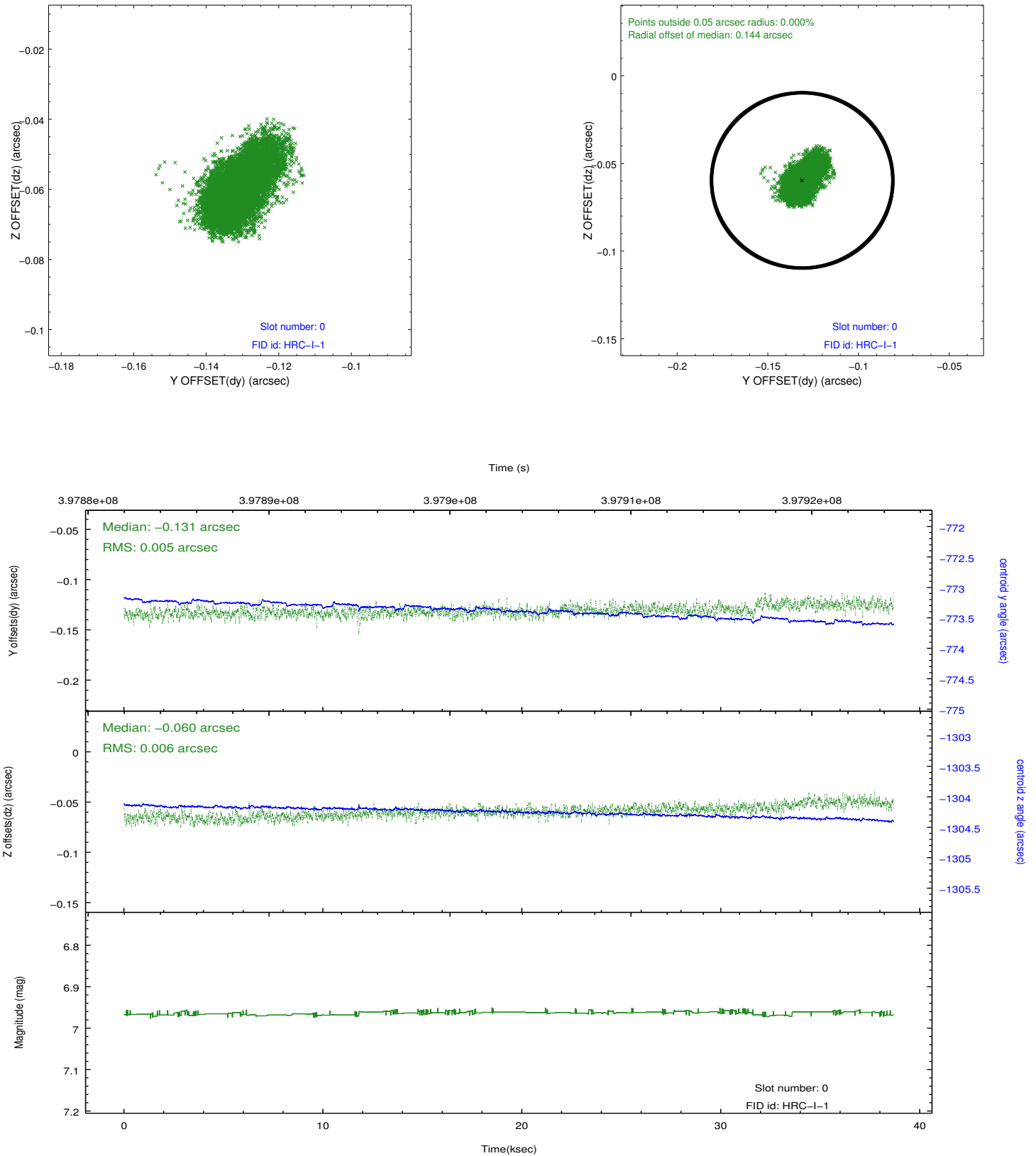


2.4.5 Slot 7

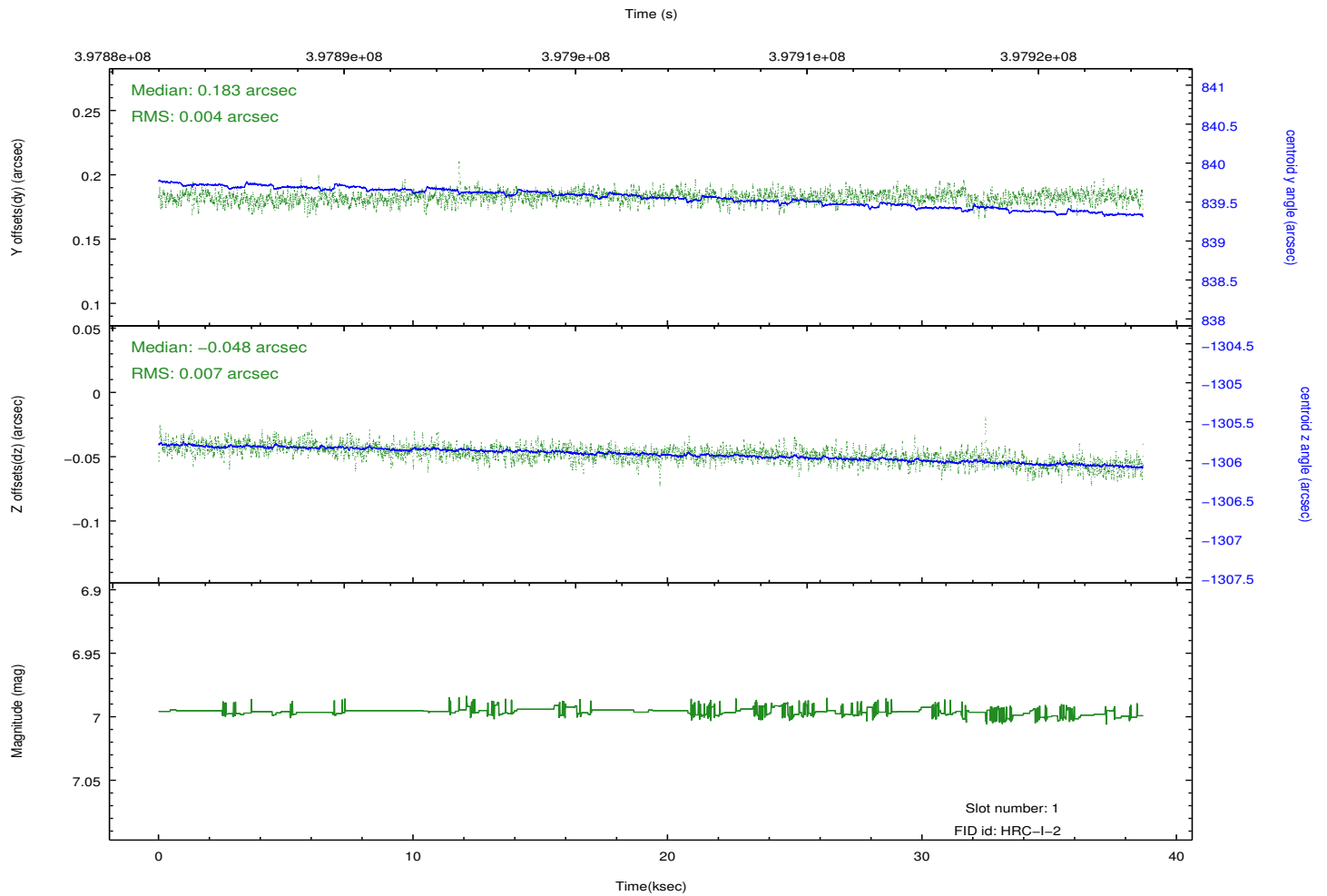
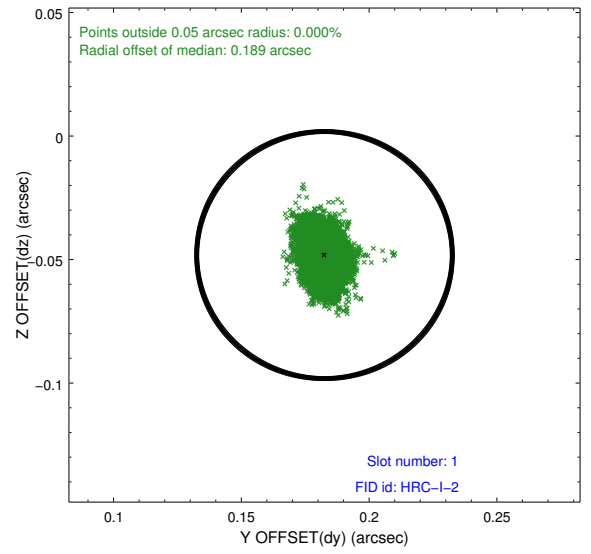
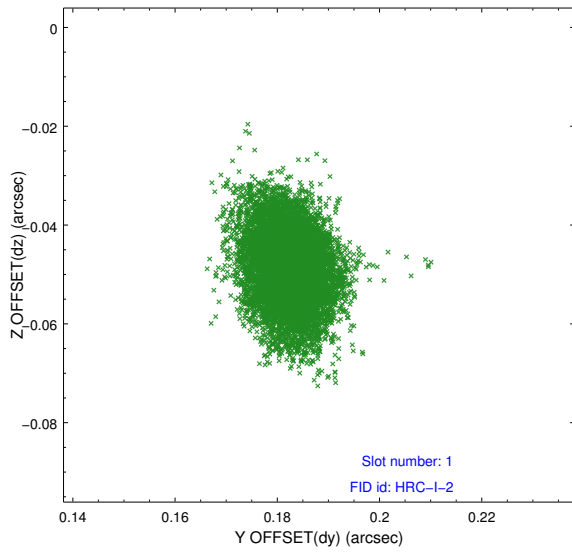


2.5 FID Slots

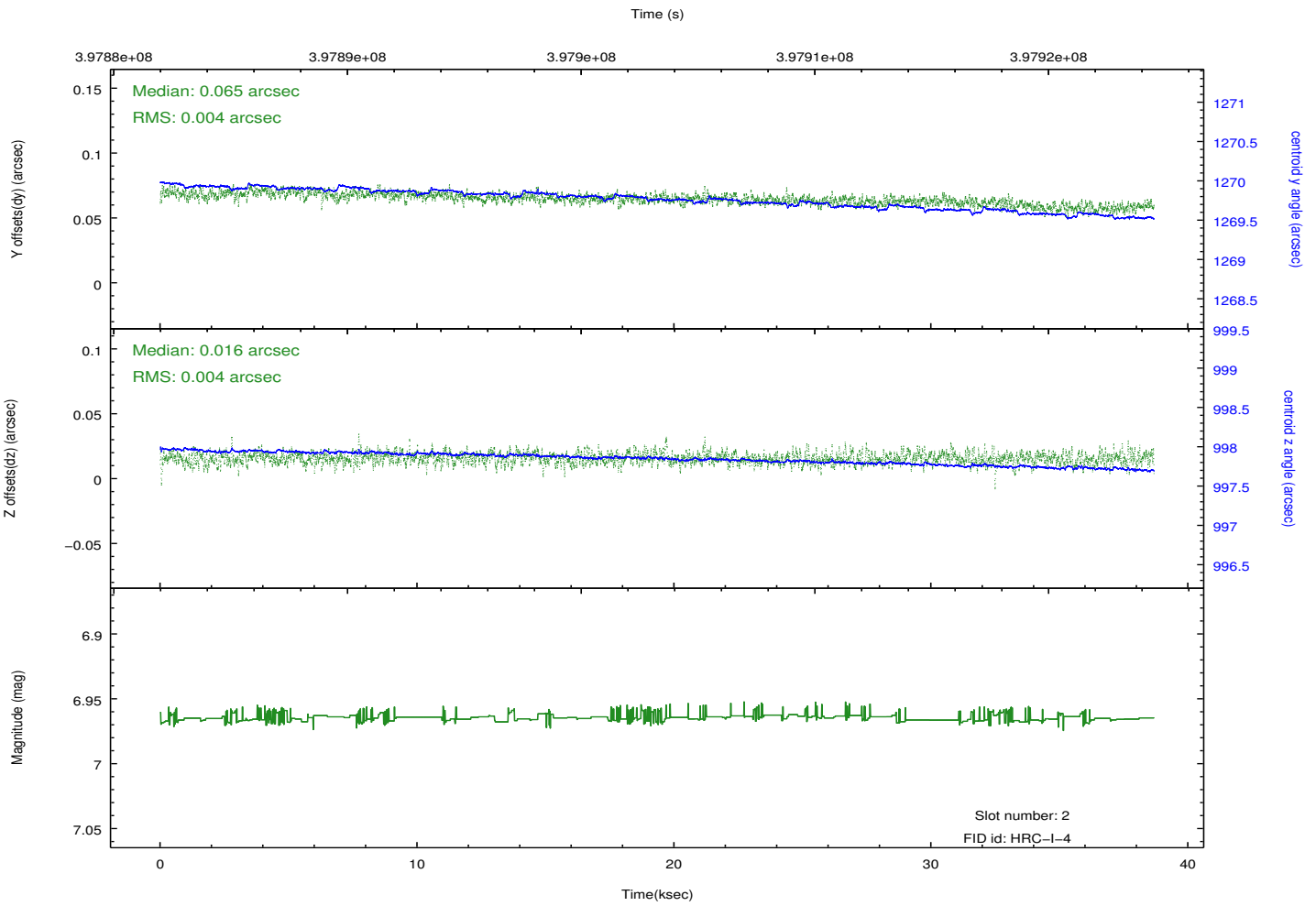
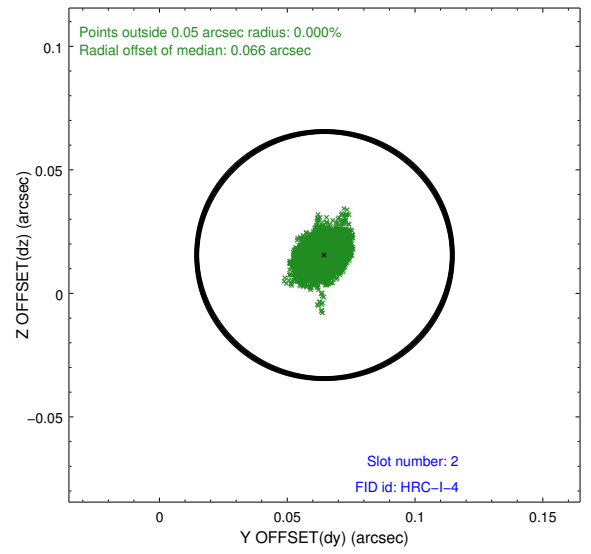
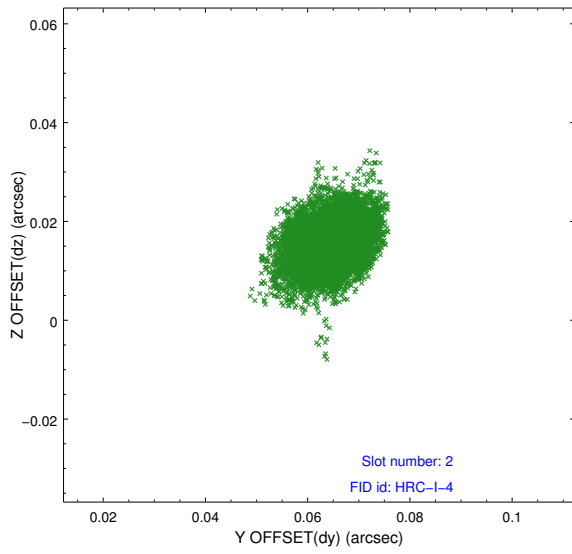
2.5.1 Slot 0



2.5.2 Slot 1



2.5.3 Slot 2



A Summary

A.1 Status

V&V Scientist	Beth Sundheim
V&V Date (YYYY-MM-DD)	2012.07.10
V&V Edition	1
V&V Disposition and Status	OK
V&V Charge Time	38.680426977038

A.2 Comments