

V&V Reference Report

L2 ASCDS Version : 8.4.5

Observation 12361 - L2 Version 2
Chandra X-Ray Center

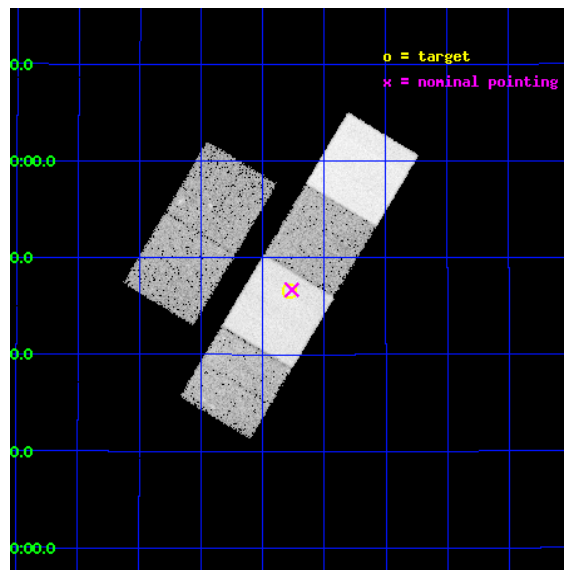
L2 Processing Date : Jul 5 2012

Contents

1	Front	2
2	OBI	3
2.1	OBI	3
2.1.1	Images	3
2.1.2	Bias	3
2.1.3	Parameters	4
2.1.4	Events	4
2.2	Compared Parameters	5
2.3	Aspect	6
2.4	Star Slots	9
2.4.1	Slot 3	9
2.4.2	Slot 4	10
2.4.3	Slot 5	11
2.4.4	Slot 6	12
2.4.5	Slot 7	13
2.5	FID Slots	14
2.5.1	Slot 0	14
2.5.2	Slot 1	15
2.5.3	Slot 2	16
A	Summary	17
A.1	Status	17
A.2	Comments	17

1 Front

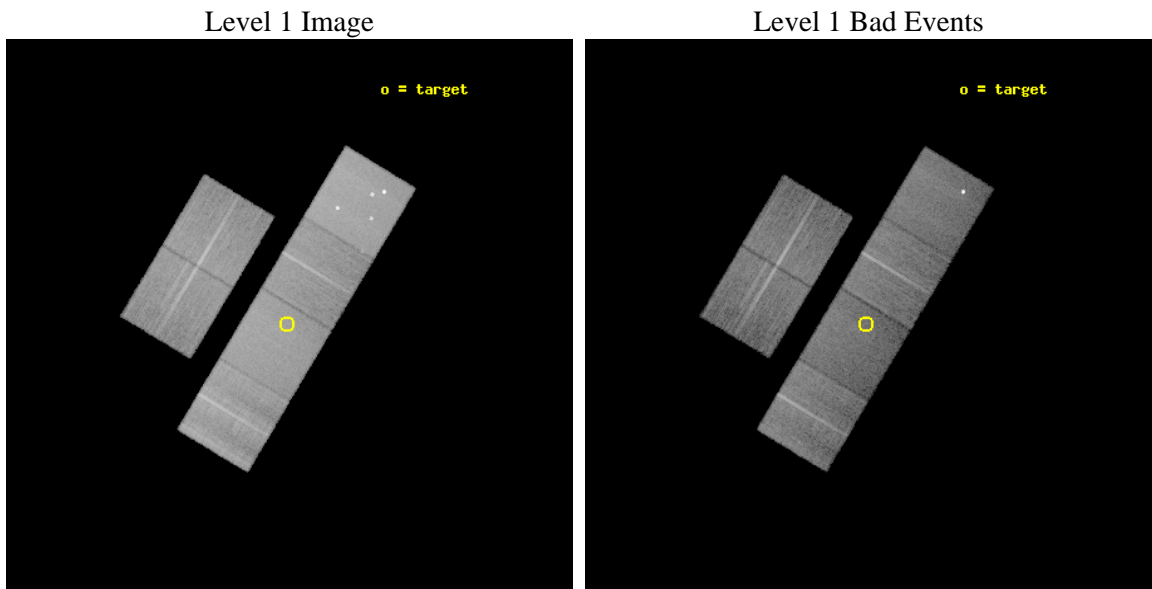
seq_num	200695	Sequence number
obs_id	12361	Observation id
title	X-rays from Planetary Nebulae: Unveiling Binarity, Magnetic Fields, and Wind Collisions	Proposal title
observer	Dr. Joel Kastner	Principal investigator
object	NGC 1514	Source name
dtcycle	0	
cycle	P	events from which exps? Prim/Second/Both
ra_targ	62.320833	Observer's specified target RA [deg]
dec_targ	30.775972	Observer's specified target Dec [deg]
ra_nom	62.315825823007	Nominal RA [deg]
dec_nom	30.778176069881	Nominal Dec [deg]
roll_nom	120.93591399971	Nominal Roll [deg]
revision	2	Processing version of data
ontime	21046.399921656	Sum of GTIs [s]
livetime	20779.897733227	Livetime [s]
ontime2	21046.399921656	Sum of GTIs [s]
ontime3	21043.158920825	Sum of GTIs [s]
ontime5	21046.399921656	Sum of GTIs [s]
ontime6	21043.158890784	Sum of GTIs [s]
ontime7	21046.399921656	Sum of GTIs [s]
ontime8	21043.158890903	Sum of GTIs [s]
l2events	246797	Number of level 2 events



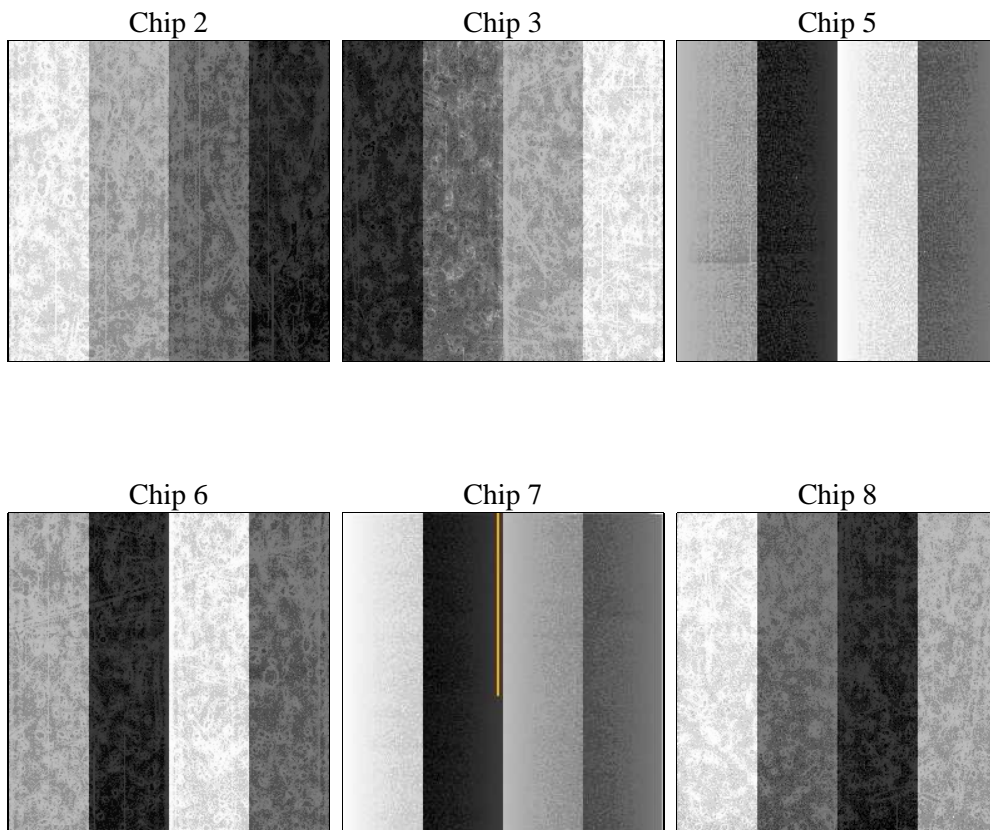
2 OBI

2.1 OBI

2.1.1 Images



2.1.2 Bias



2.1.3 Parameters

obi_num	0	Obi number	sched_exp_time	21000.000000	[s] Scheduled observation exposure time
ascdsver	8.4.5	Processing system revision	ontime	21046.399921656	Sum of GTIs [s]
caldbver	4.5.0	 	ontime2	21046.399921656	Sum of GTIs [s]
date	2012-07-05T22:41:50	Date and time of file creation	ontime3	21043.158920825	Sum of GTIs [s]
revision	2	Processing version of data	ontime5	21046.399921656	Sum of GTIs [s]
			ontime6	21043.158890784	Sum of GTIs [s]
			ontime7	21046.399921656	Sum of GTIs [s]
			ontime8	21043.158890903	Sum of GTIs [s]
			l1events	1079833	Number of level 1 events

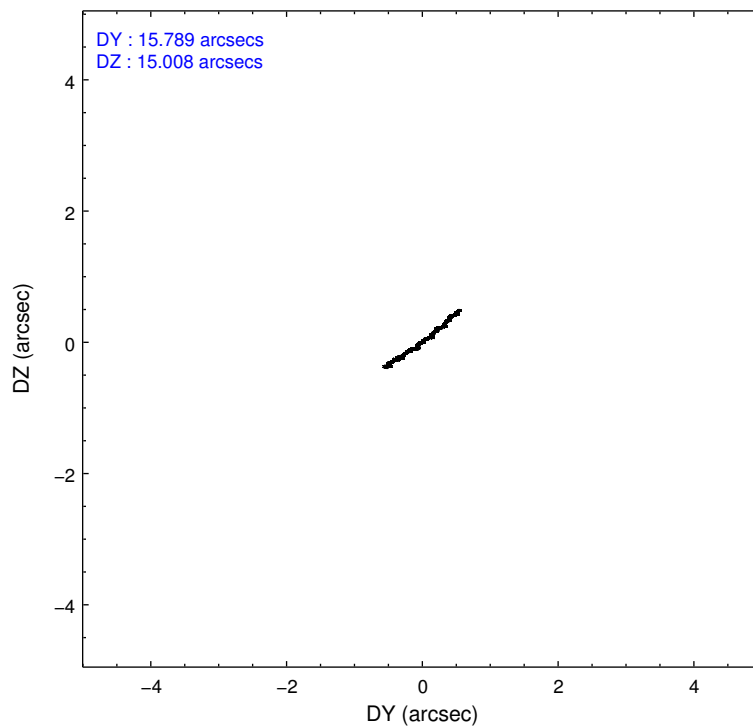
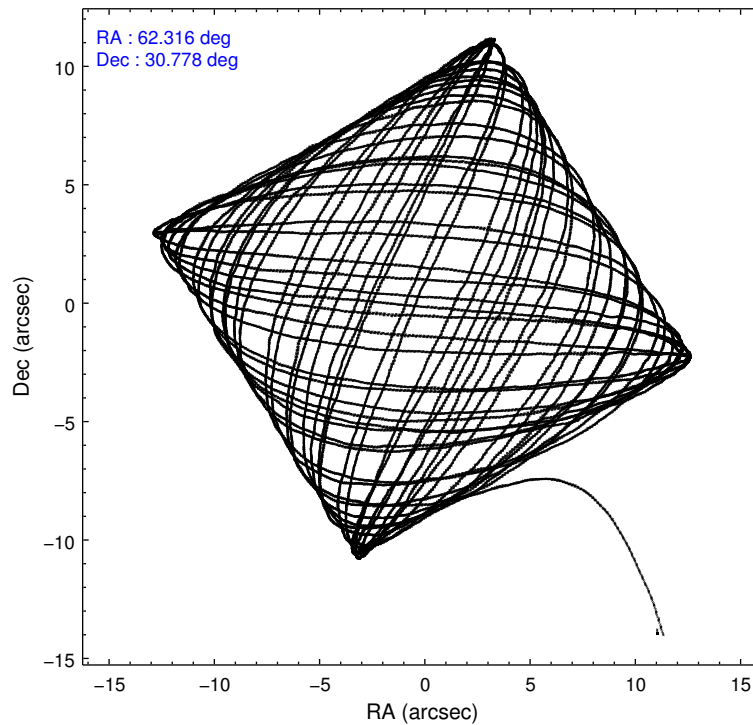
2.1.4 Events

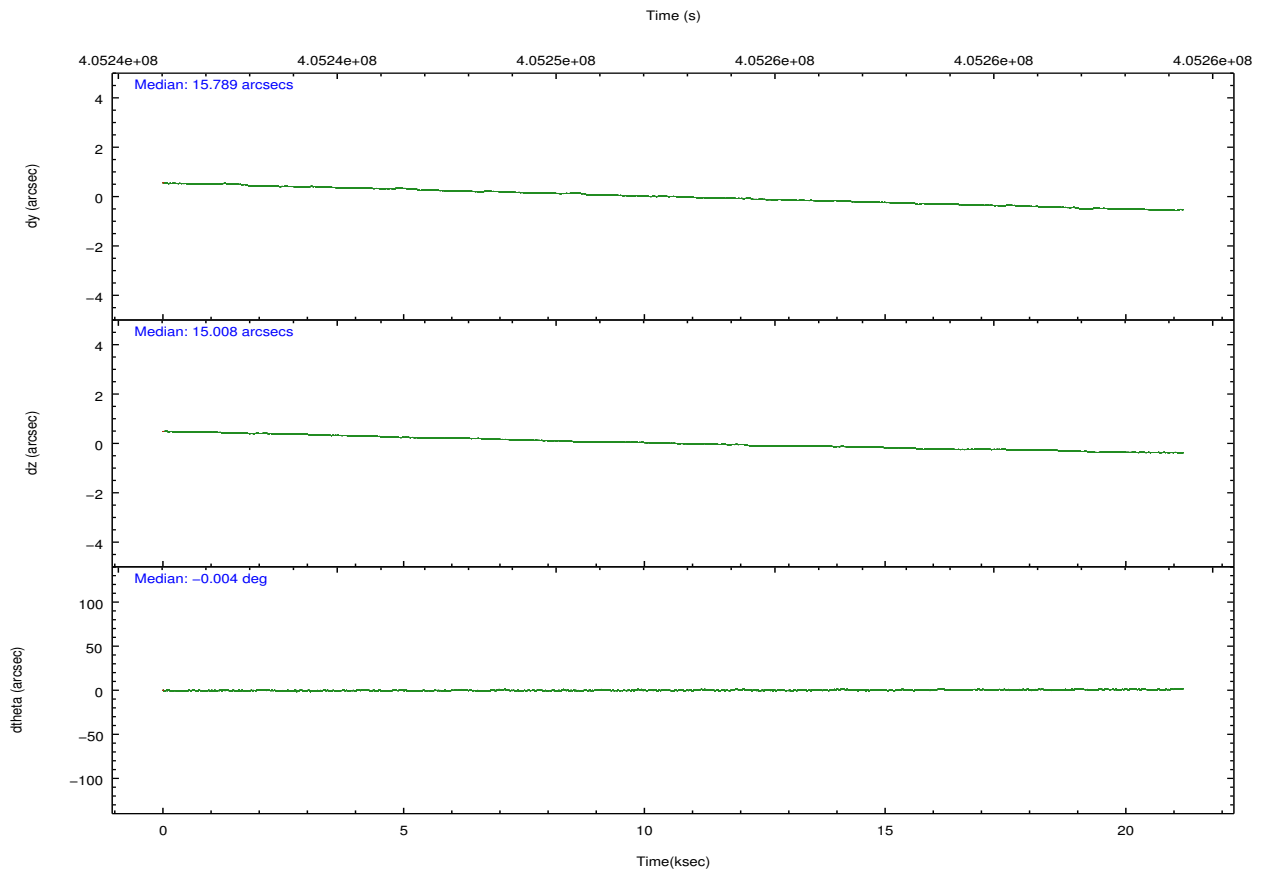
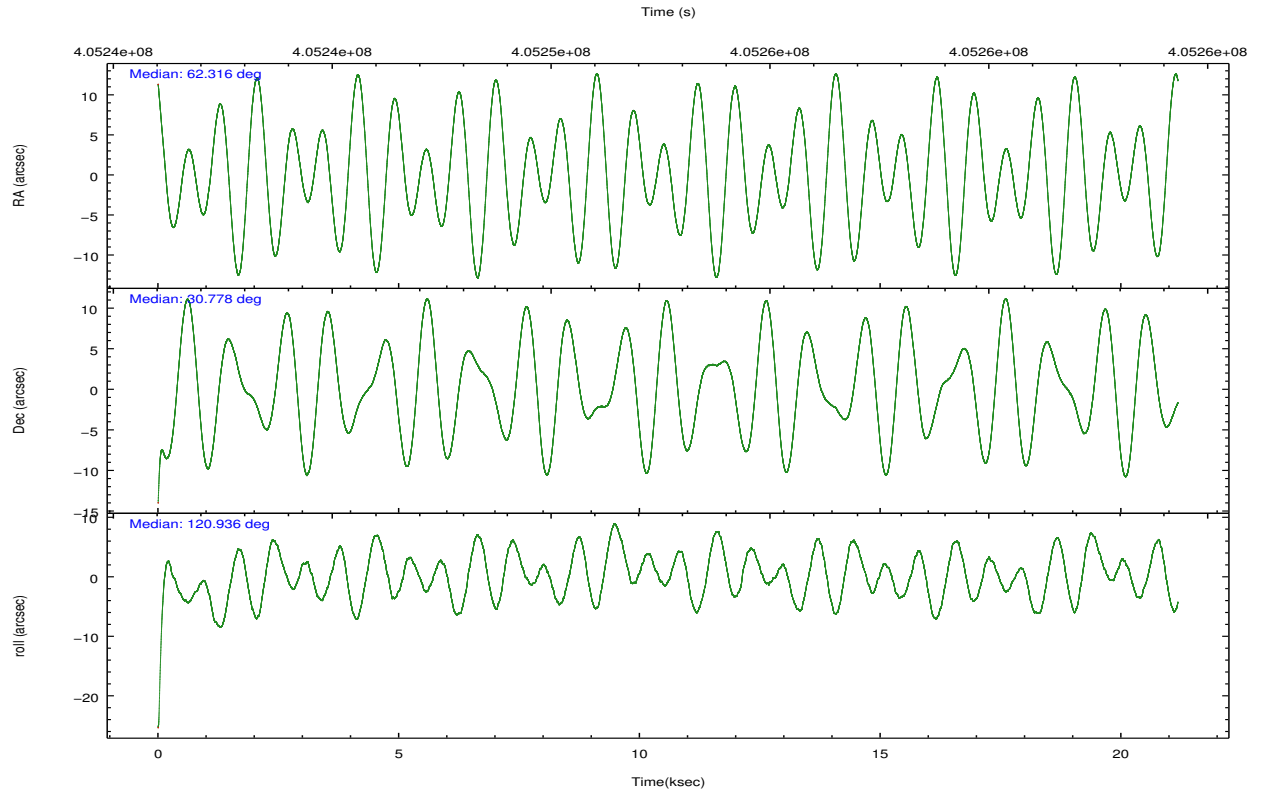
	ccd 2	ccd 3	ccd 5	ccd 6	ccd 7	ccd 8		ccd 2	ccd 3	ccd 5	ccd 6	ccd 7	ccd 8
level 1 events	152565	143828	244221	154606	187147	197466	grade 0 events	5623	5116	17461	5815	7257	14691
rejected events	136516	128904	123196	137549	103873	146064		3%	3%	7%	3%	3%	7%
rejected %	89%	89%	50%	88%	55%	73%	grade 1 events	108	83	426	86	251	154
								0%	0%	0%	0%	0%	0%
							grade 2 events	3871	3271	34567	3898	17181	12309
								2%	2%	14%	2%	9%	6%
							grade 3 events	1728	1672	4086	1782	7377	5442
								1%	1%	1%	1%	3%	2%
							grade 4 events	1705	1646	4098	1806	7290	5084
								1%	1%	1%	1%	3%	2%
							grade 5 events	6044	6803	17976	7239	19604	9956
								3%	4%	7%	4%	10%	5%
							grade 6 events	3127	3223	60853	3765	44202	13884
								2%	2%	24%	2%	23%	7%
							grade 7 events	130359	122014	104754	130215	83985	135946
								85%	84%	42%	84%	44%	68%

2.2 Compared Parameters

Parameter	Planned	Actual	Parameter	Planned	Actual
Instrument	ACIS	ACIS	Obspar format version number	7	7
Detector	ACIS-235678	ACIS-235678	Obspar file type	PREDICTED	ACTUAL
Grating	NONE	NONE	Obspar update status	NONE	UPDATED
Data mode	VFAINT	VFAINT	CCD I0 on	N	N
Observation mode	POINTING	POINTING	CCD I1 on	N	N
[deg] Pointing RA	62.343845	62.31582582300735	CCD I2 on	O4	Y
[deg] Pointing Dec	30.765235	30.77817606988053	CCD I3 on	O5	Y
[deg] Pointing Roll	120.764959	120.9359139997082	CCD S0 on	N	N
[mm] SIM focus pos	-0.684267	-0.6828225247311905	CCD S1 on	O3	Y
[mm] SIM defocus	0	0.001444936568705701	CCD S2 on	O1	Y
[mm] SIM translation stage pos	-190.132523	-190.1425803651734	CCD S3 on	Y	Y
[mm] SIM translation stage offset	0	0.01005778216563158	CCD S4 on	O2	Y
[s] Observation start time (MET)	405242265.184000	405241062.66549	CCD S5 on	N	N
Observation start date	2010-11-04T07:16:39	2010-11-04T06:57:42	Number of optional ACIS chips dropped	0	0
[s] Observation end time (MET)	405263265.184000	405263984.22917	On-chip summing requested	N	N
Observation end date	2010-11-04T13:06:39	2010-11-04T13:19:44	Subarray requested	NONE	NONE
Read mode	TIMED	TIMED	Alternating exposures requested	N	N
			[s] Primary exposure time	0.000000	3.2

2.3 Aspect



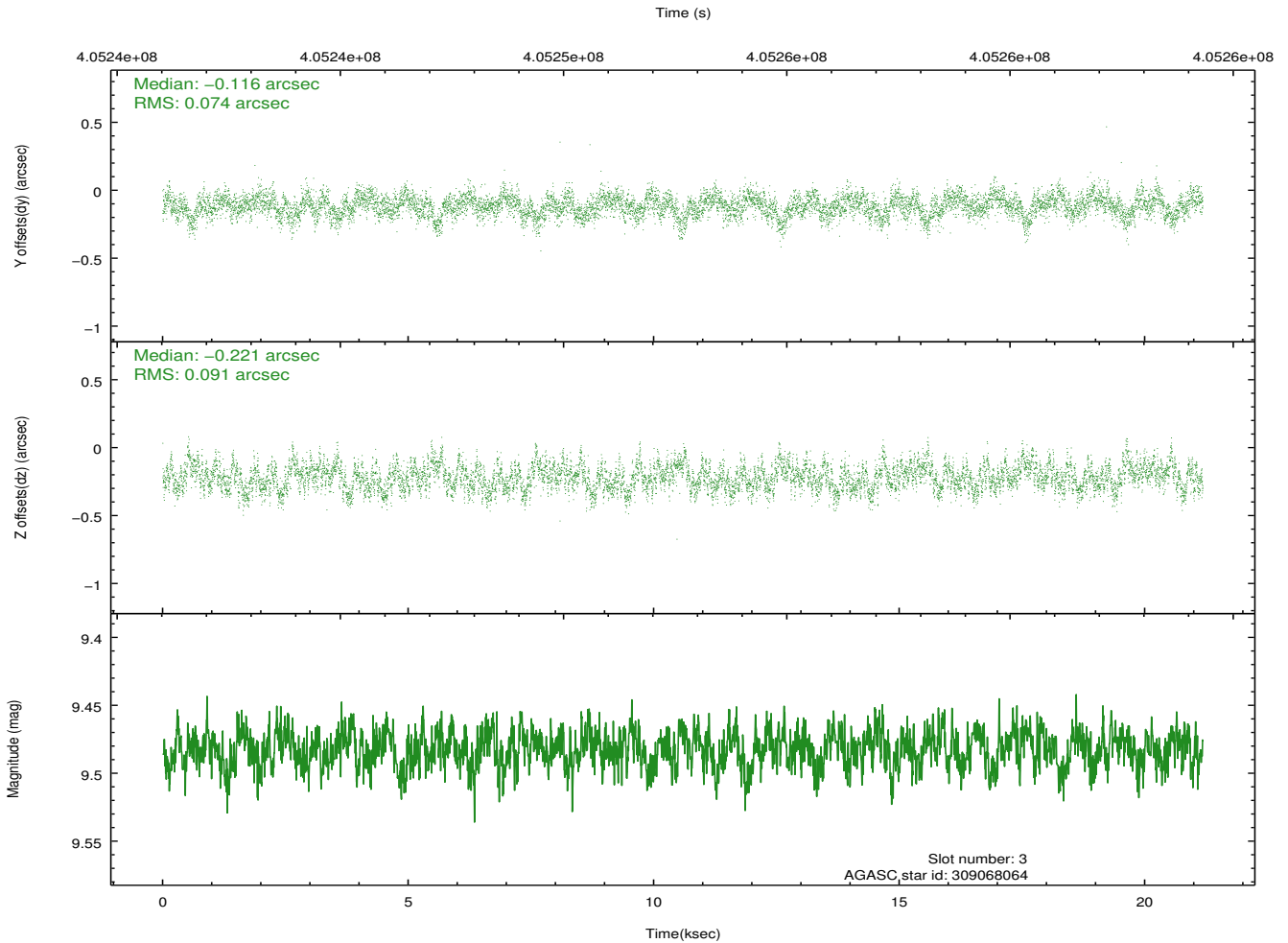
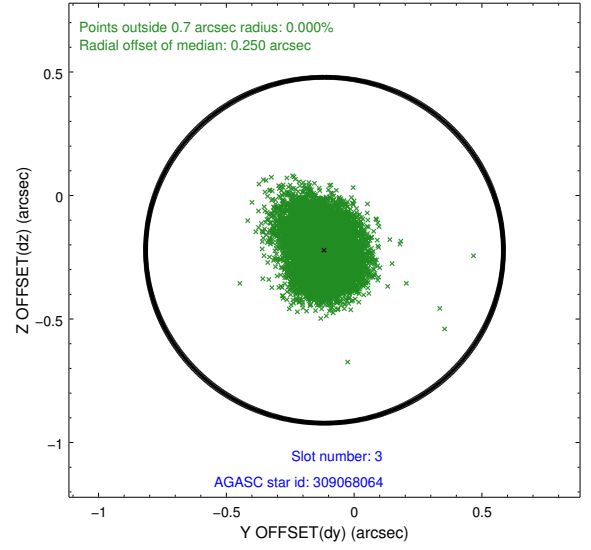
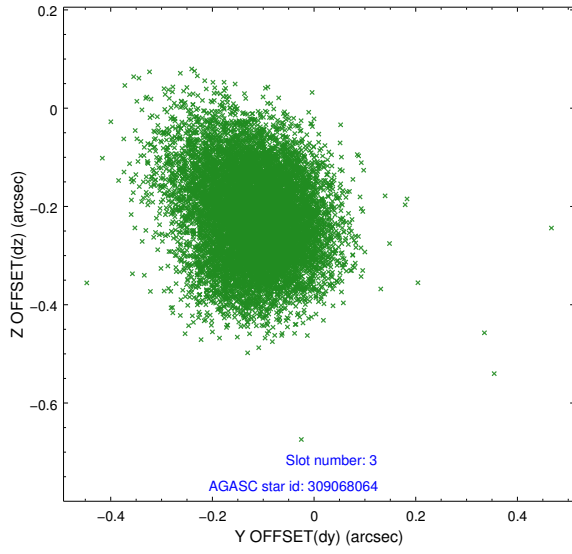


Slot Statistics

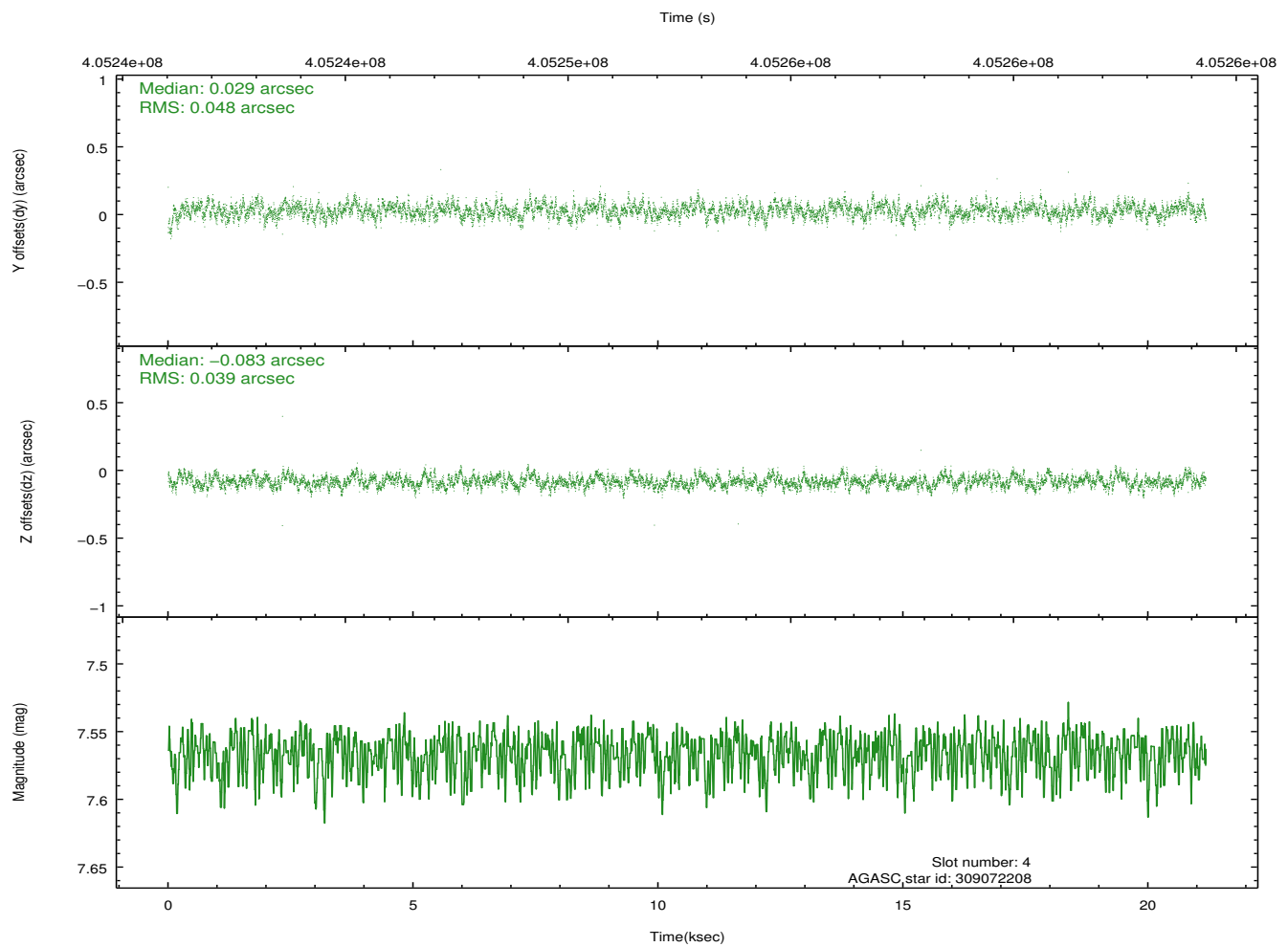
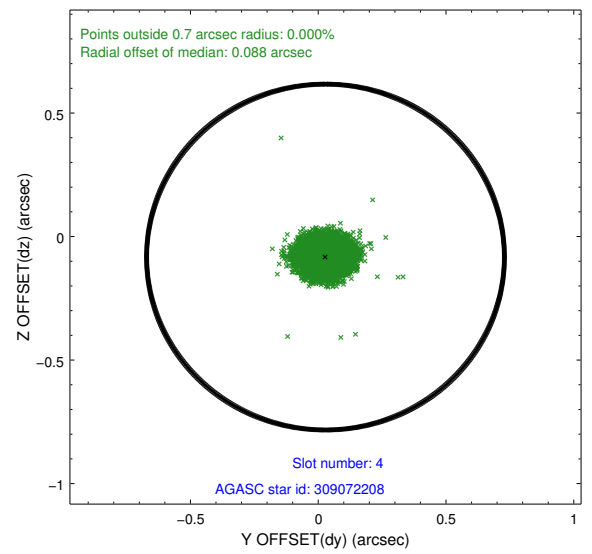
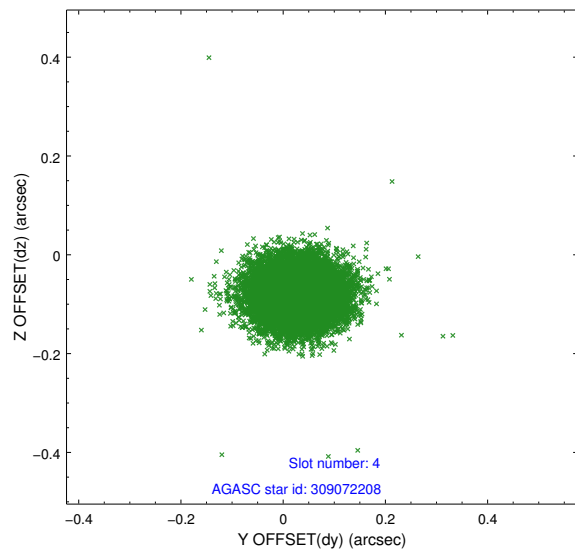
slot	status	id	mag	n_pts	med_dy	med_dz	dr1	dr2	ra	dec	mean_y	mean_z
0	FID	ACIS-S-2	6.96	5167	-0.107	-0.030	0.012	0.025	0.000000	0.000000	-768.87	-1736.39
1	FID	ACIS-S-4	7.03	5167	0.202	0.060	0.011	0.026	0.000000	0.000000	2144.63	172.02
2	FID	ACIS-S-5	7.07	5167	-0.126	-0.021	0.012	0.032	0.000000	0.000000	-1821.53	165.79
3	GUIDE	309068064	9.48	10325	-0.116	-0.221	0.124	0.201	61.945024	30.801024	742.91	992.60
4	GUIDE	309072208	7.57	10333	0.029	-0.083	0.066	0.105	62.323797	30.642868	-346.34	279.05
5	GUIDE	309078384	8.07	10330	-0.037	0.192	0.068	0.108	62.576033	30.648350	-728.53	-402.68
6	GUIDE	309085200	8.82	10327	-0.158	-0.011	0.086	0.141	62.058720	30.833867	664.10	630.63
7	GUIDE	310790800	9.35	10316	0.286	0.123	0.106	0.171	63.050750	30.416785	-2193.86	-1247.02

2.4 Star Slots

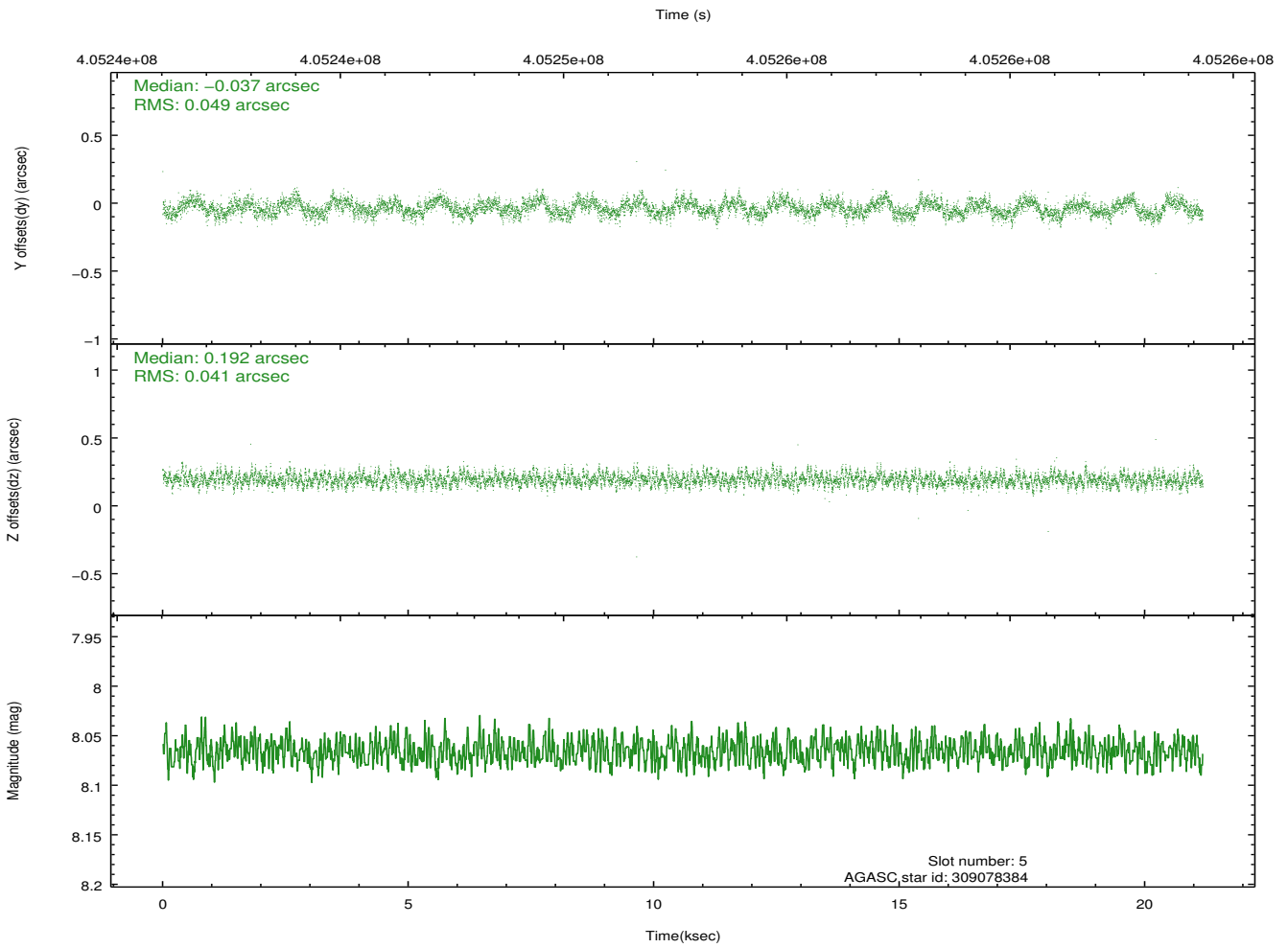
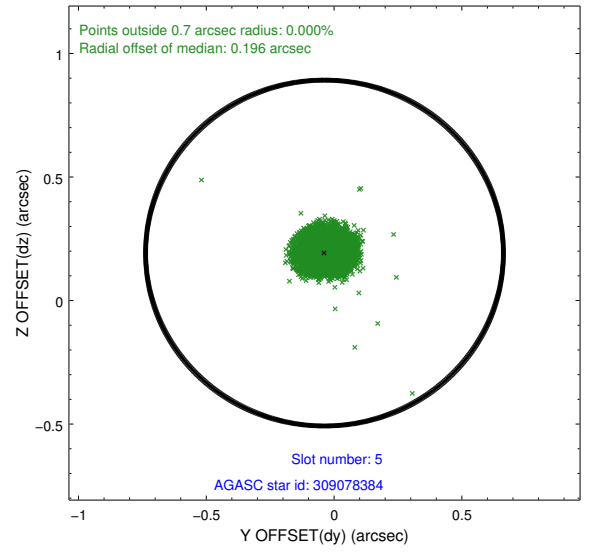
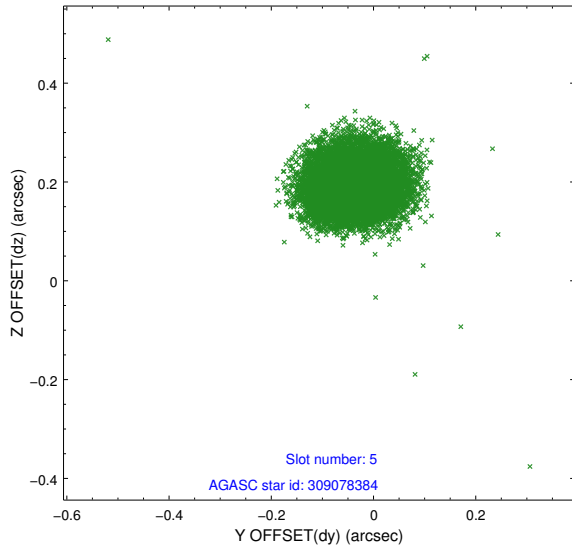
2.4.1 Slot 3



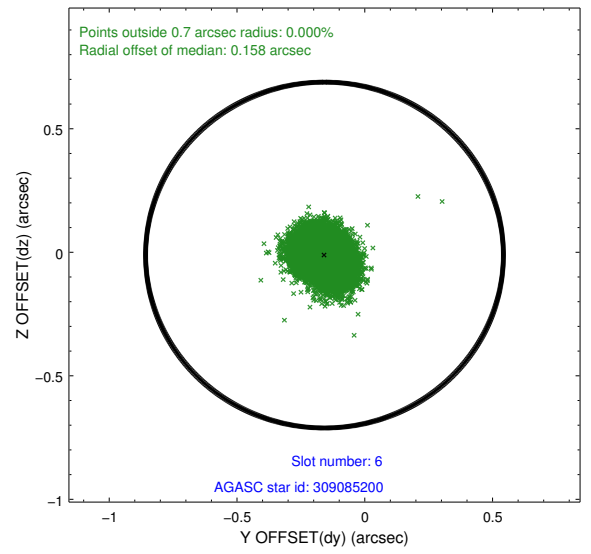
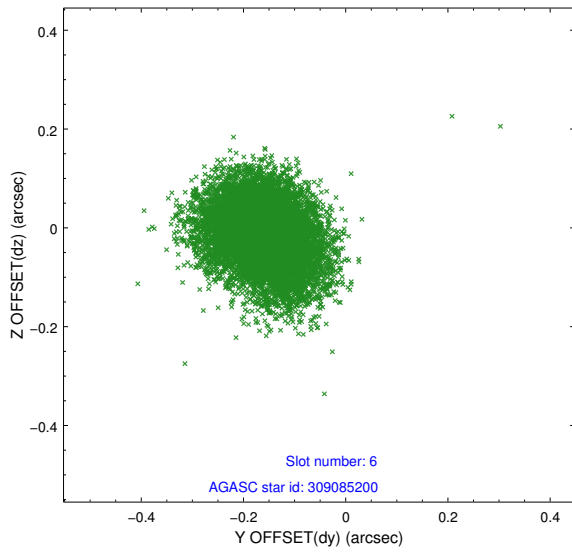
2.4.2 Slot 4



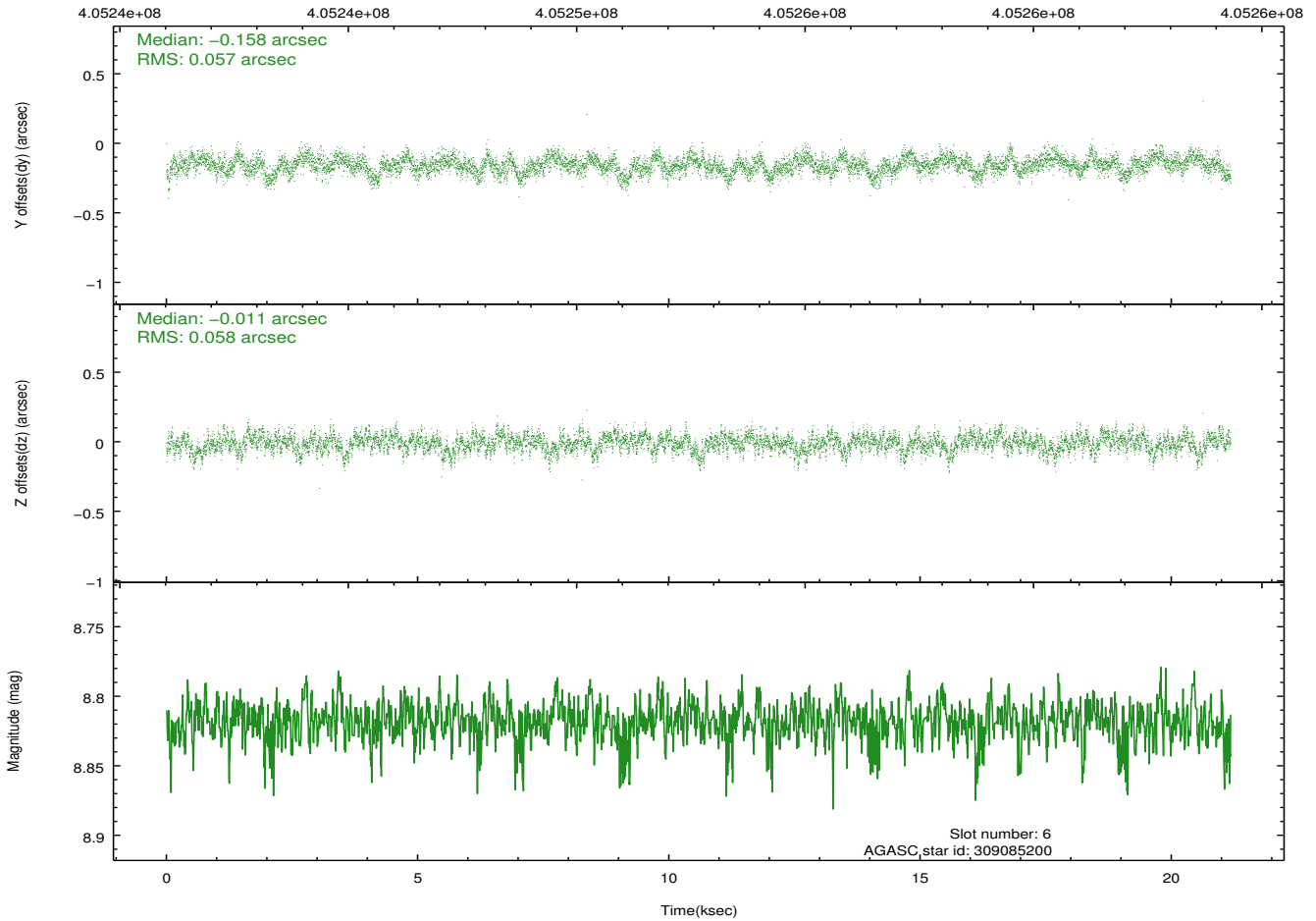
2.4.3 Slot 5



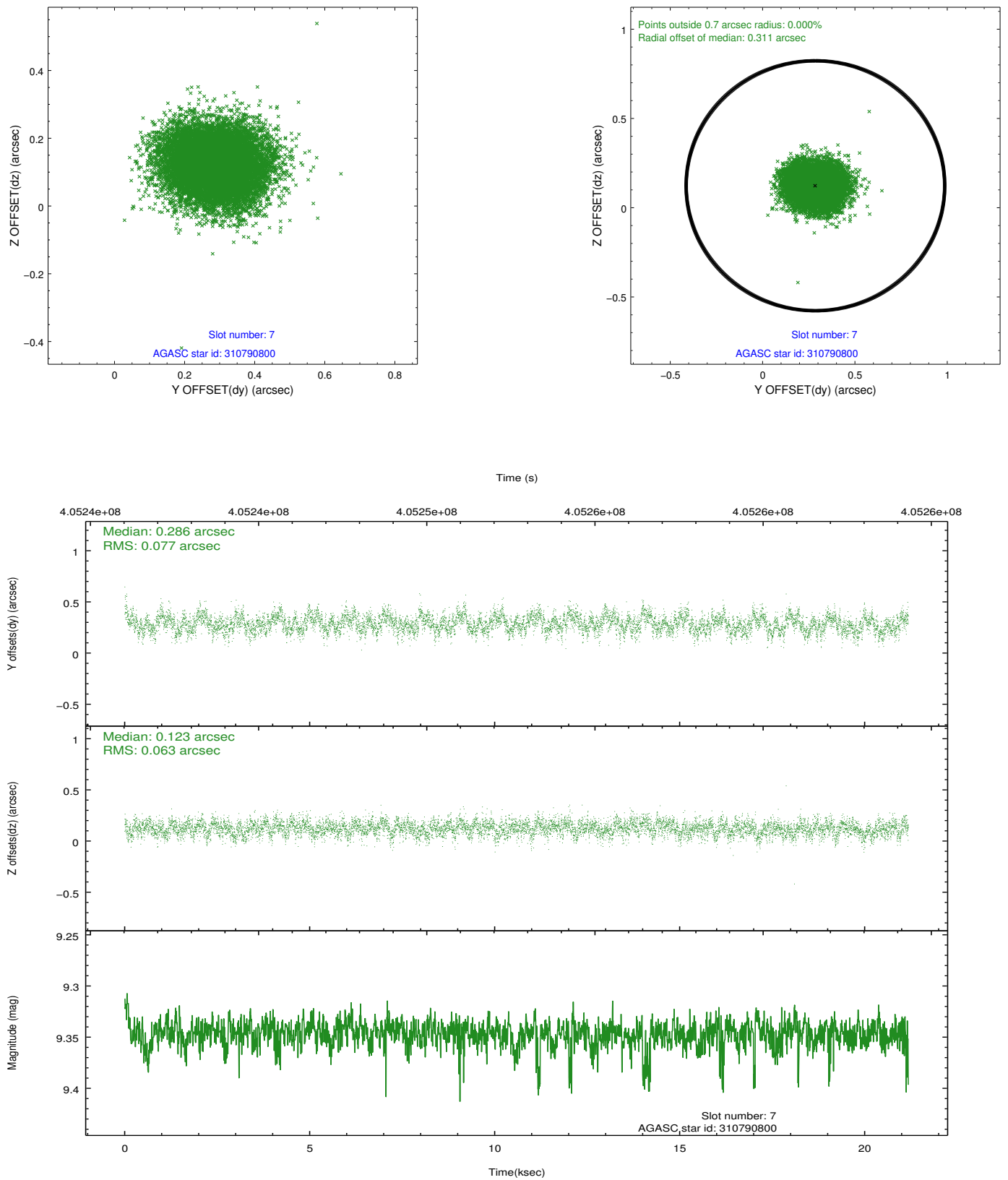
2.4.4 Slot 6



Time (s)

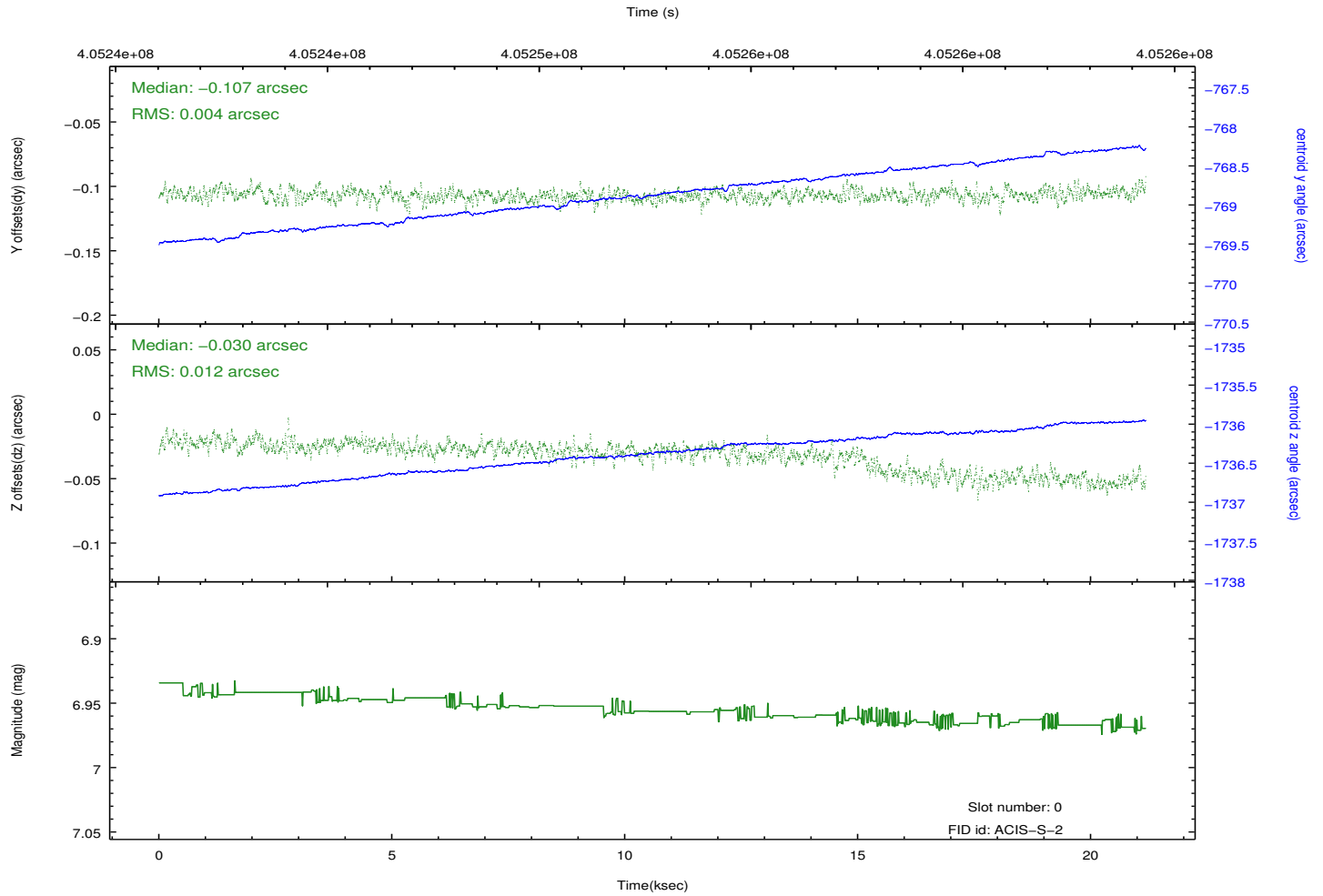
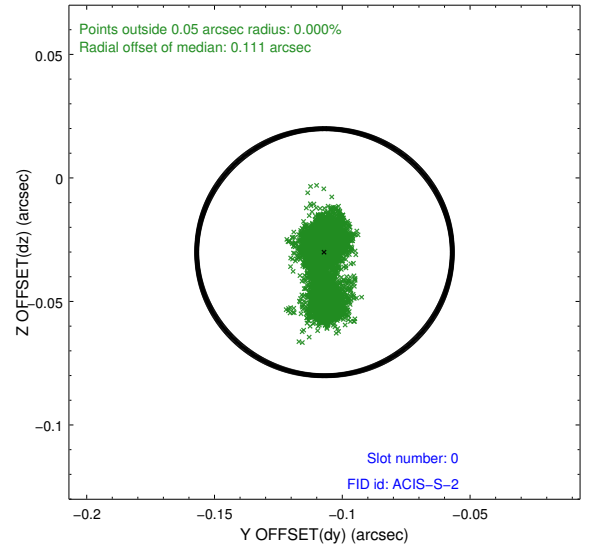
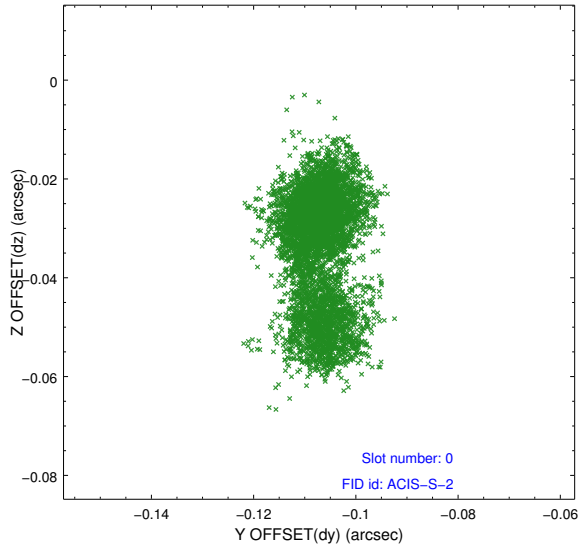


2.4.5 Slot 7

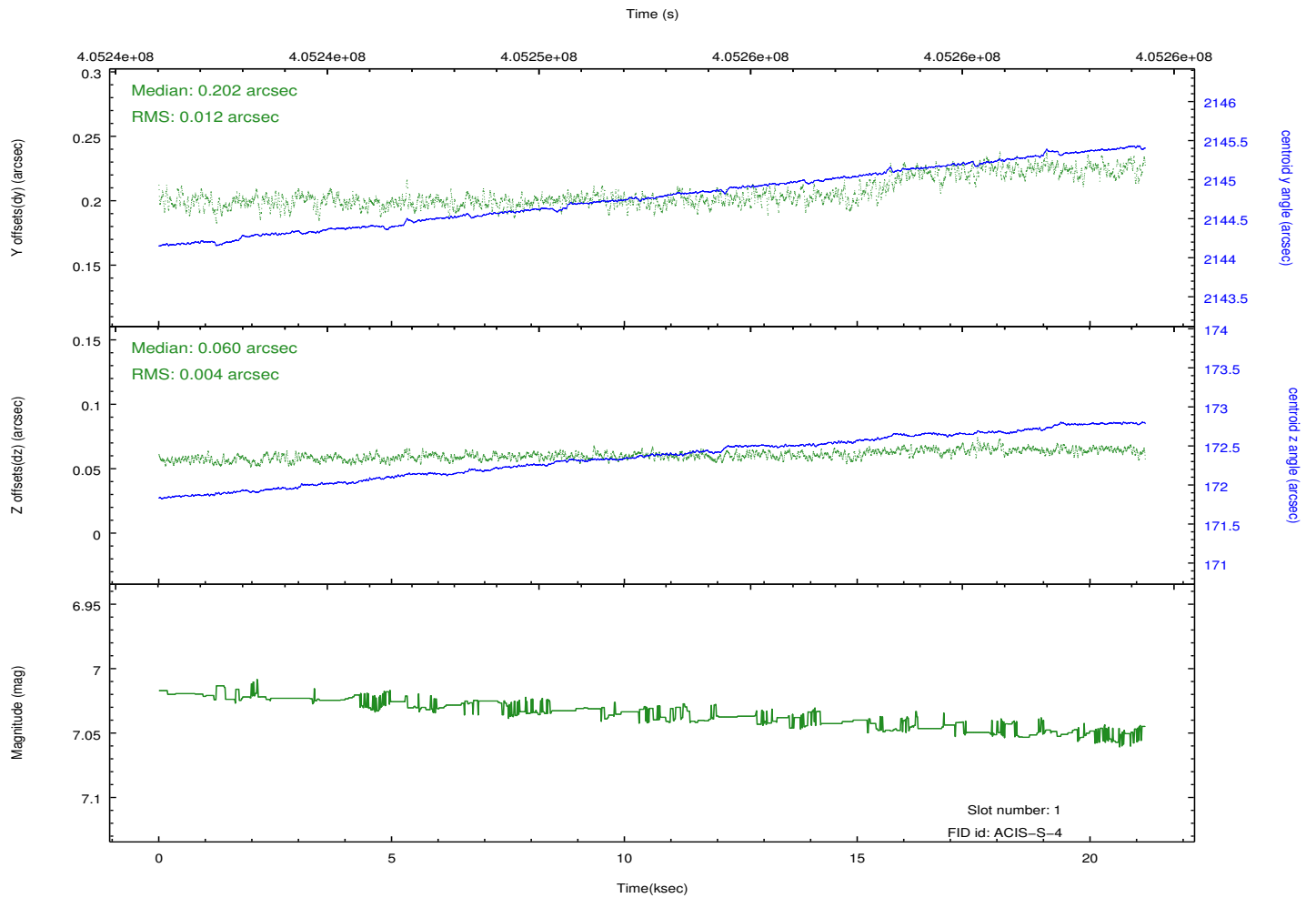
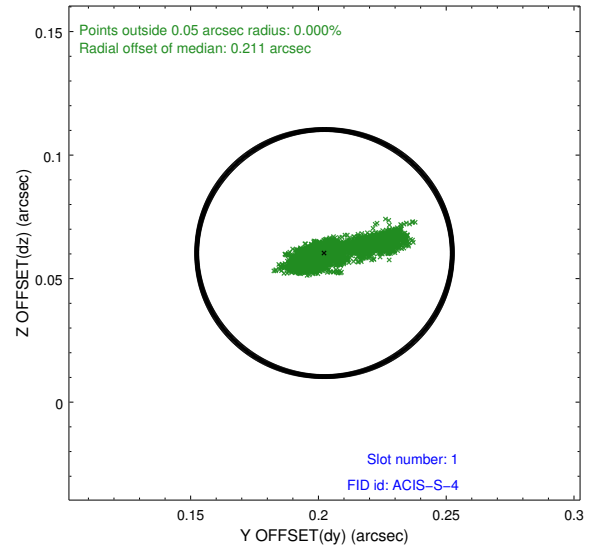
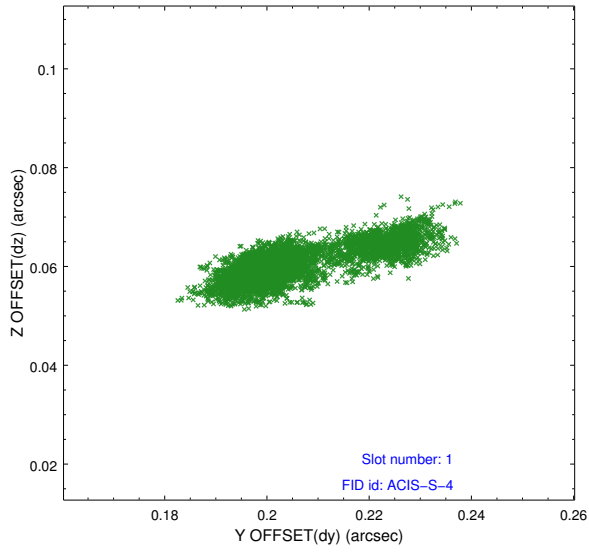


2.5 FID Slots

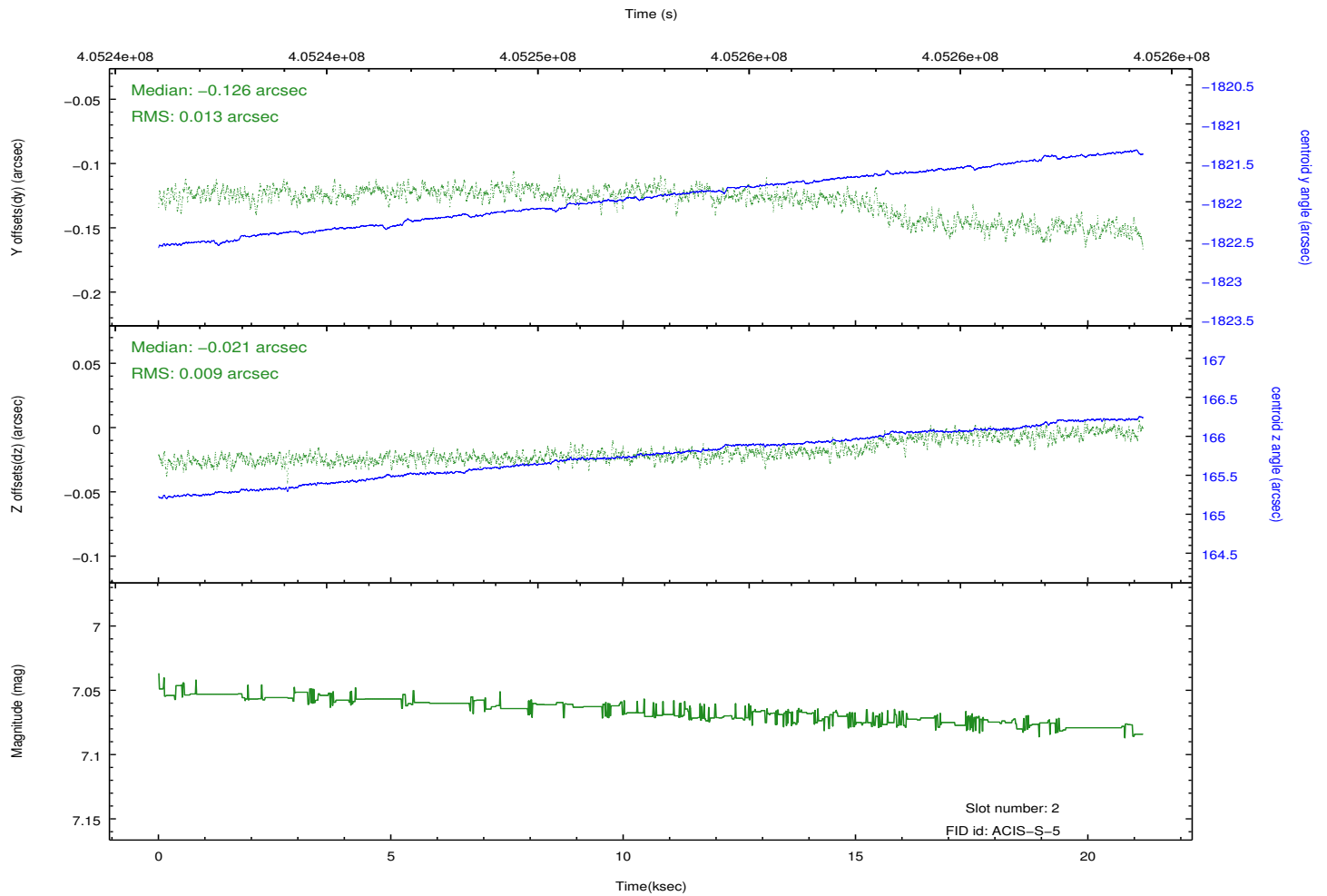
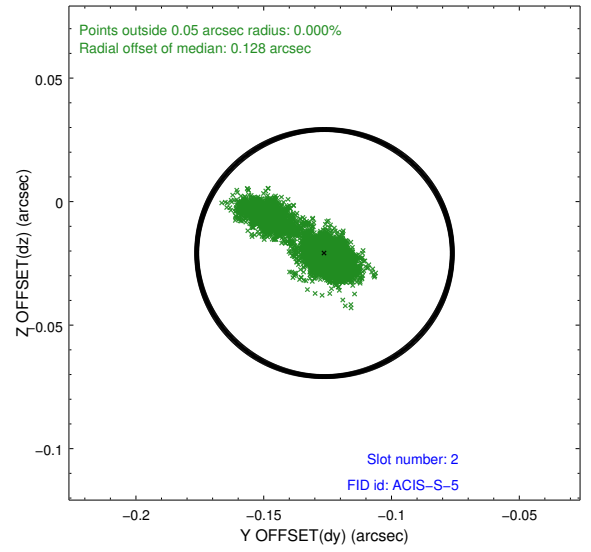
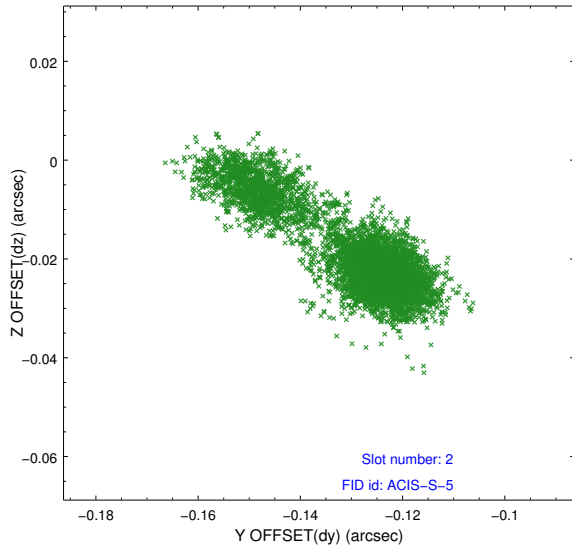
2.5.1 Slot 0



2.5.2 Slot 1



2.5.3 Slot 2



A Summary

A.1 Status

V&V Scientist	Jen Lauer
V&V Date (YYYY-MM-DD)	2012.07.16
V&V Edition	1
V&V Disposition and Status	OK
V&V Charge Time	21.046399921656

A.2 Comments