

V&V Reference Report

L2 ASCDS Version : 8.4.5

Observation 12391 - L2 Version 2
Chandra X-Ray Center

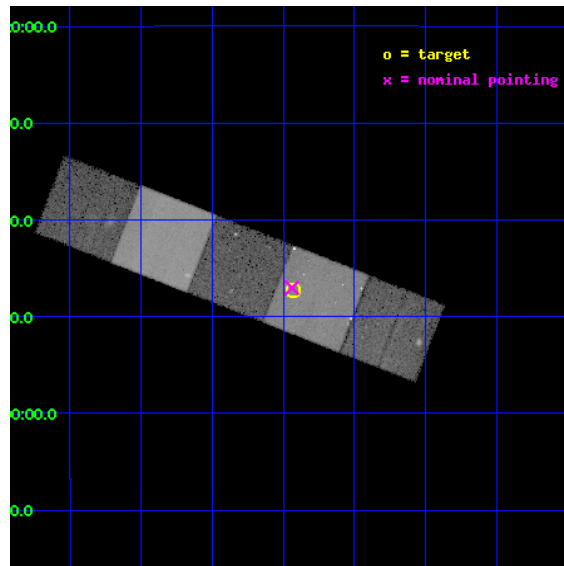
L2 Processing Date : Jul 7 2012

Contents

1	Front	2
2	OBI	3
2.1	OBI	3
2.1.1	Images	3
2.1.2	Bias	3
2.1.3	Parameters	4
2.1.4	Events	4
2.2	Compared Parameters	5
2.3	Aspect	6
2.4	Star Slots	9
2.4.1	Slot 3	9
2.4.2	Slot 4	10
2.4.3	Slot 5	11
2.4.4	Slot 6	12
2.4.5	Slot 7	13
2.5	FID Slots	14
2.5.1	Slot 0	14
2.5.2	Slot 1	15
2.5.3	Slot 2	16
A	Summary	17
A.1	Status	17
A.2	Comments	17

1 Front

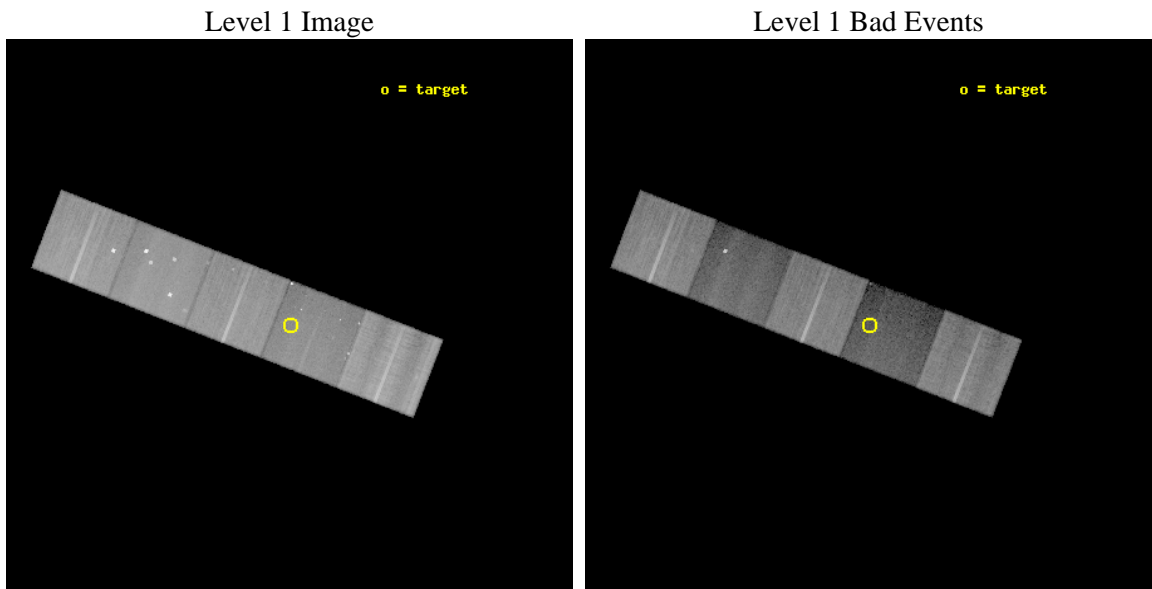
seq_num	200725	Sequence number
obs_id	12391	Observation id
title	What is the nature of HH~2's X-ray emission?	Proposal title
observer	Dr Peter Schneider	Principal investigator
object	HH 2	Source name
dtycycle	0	
cycle	P	events from which exps? Prim/Second/Both
ra_targ	84.107083	Observer's specified target RA [deg]
dec_targ	-6.78775	Observer's specified target Dec [deg]
ra_nom	84.110038262242	Nominal RA [deg]
dec_nom	-6.7838888870678	Nominal Dec [deg]
roll_nom	21.215278978047	Nominal Roll [deg]
revision	2	Processing version of data
ontime	40658.23346889	Sum of GTIs [s]
livetime	40127.003716463	Livetime [s]
ontime4	40654.928298473	Sum of GTIs [s]
ontime5	40658.192428887	Sum of GTIs [s]
ontime6	40655.010358572	Sum of GTIs [s]
ontime7	40658.23346889	Sum of GTIs [s]
ontime8	40651.828298151	Sum of GTIs [s]
l2events	291287	Number of level 2 events



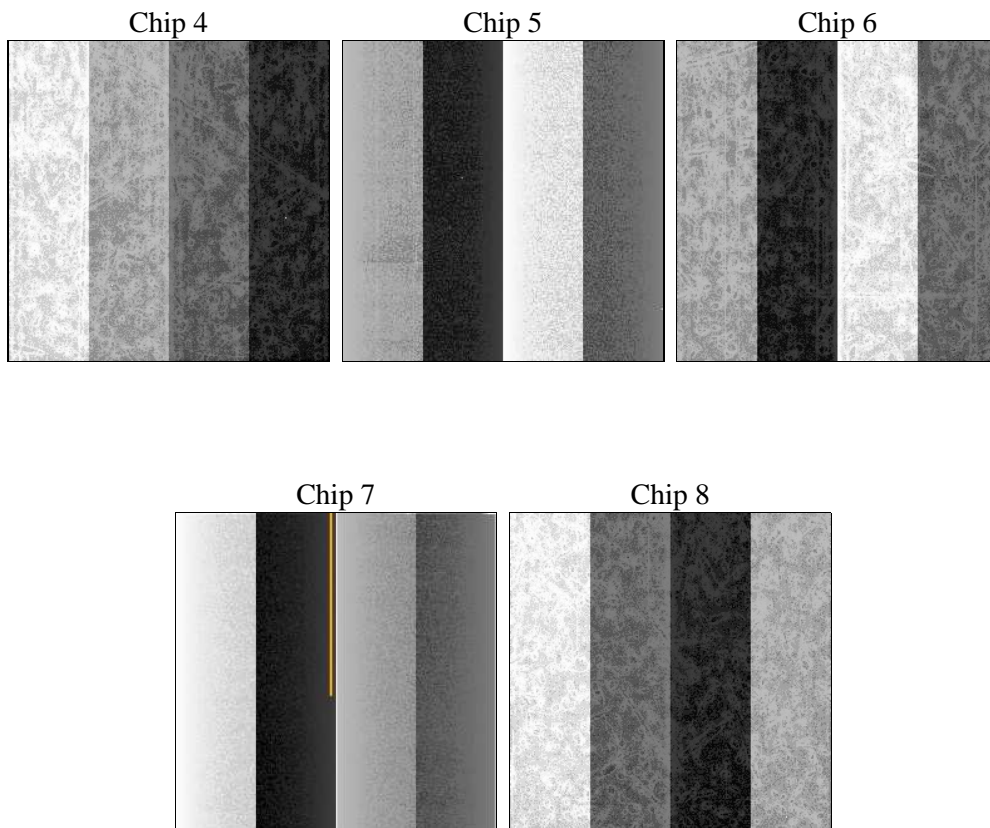
2 OBI

2.1 OBI

2.1.1 Images



2.1.2 Bias



2.1.3 Parameters

obi_num	0	Obi number	sched_exp_time	40626.000000	[s] Scheduled observation exposure time
ascdsver	8.4.5	Processing system revision	ontime	40658.23346889	Sum of GTIs [s]
caldsver	4.5.0	 	ontime4	40654.928298473	Sum of GTIs [s]
date	2012-07-07T19:33:27	Date and time of file creation	ontime5	40658.192428887	Sum of GTIs [s]
revision	2	Processing version of data	ontime6	40655.010358572	Sum of GTIs [s]
			ontime7	40658.23346889	Sum of GTIs [s]
			ontime8	40651.828298151	Sum of GTIs [s]
			l1events	1260321	Number of level 1 events

2.1.4 Events

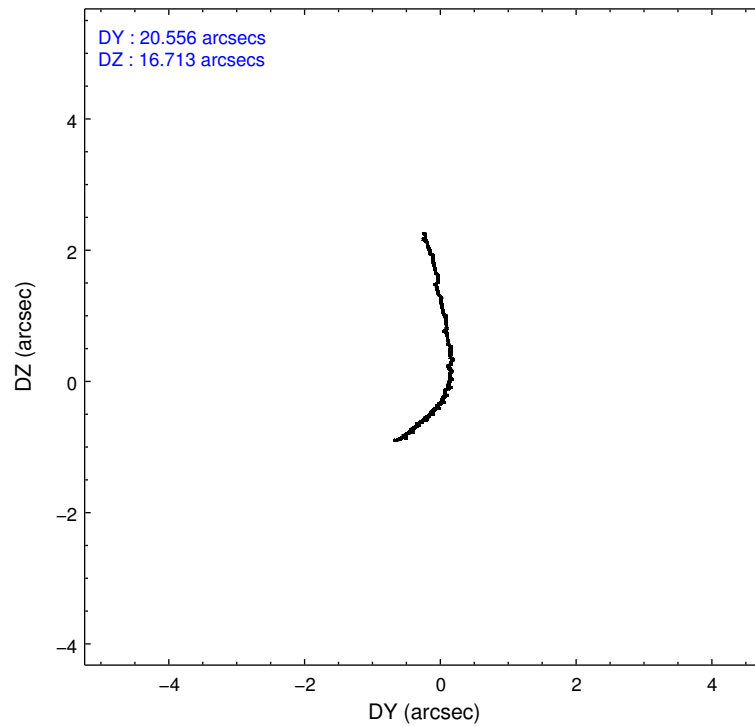
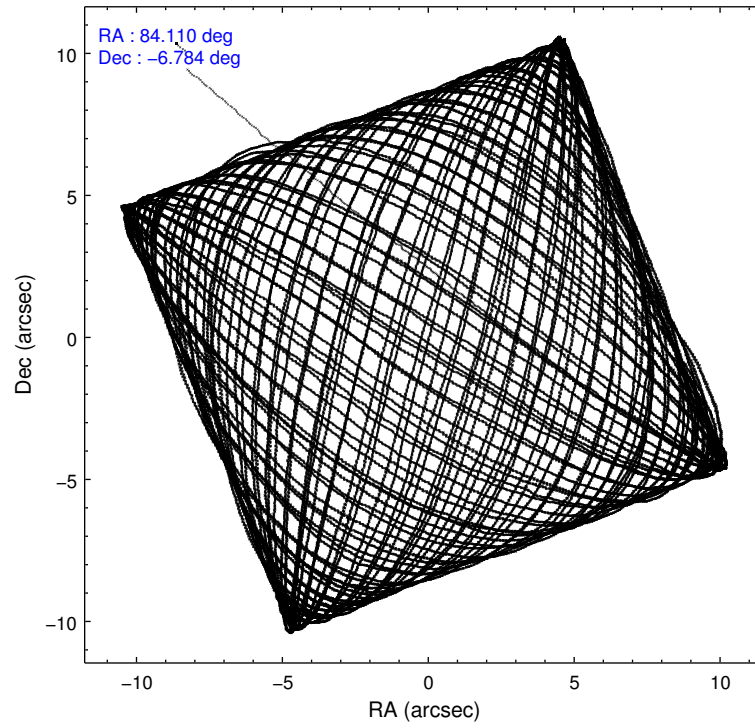
	ccd 4	ccd 5	ccd 6	ccd 7	ccd 8
level 1 events	286542	261870	241128	168182	302599
rejected events	251479	102441	216922	70574	212208
rejected %	87%	39%	89%	41%	70%

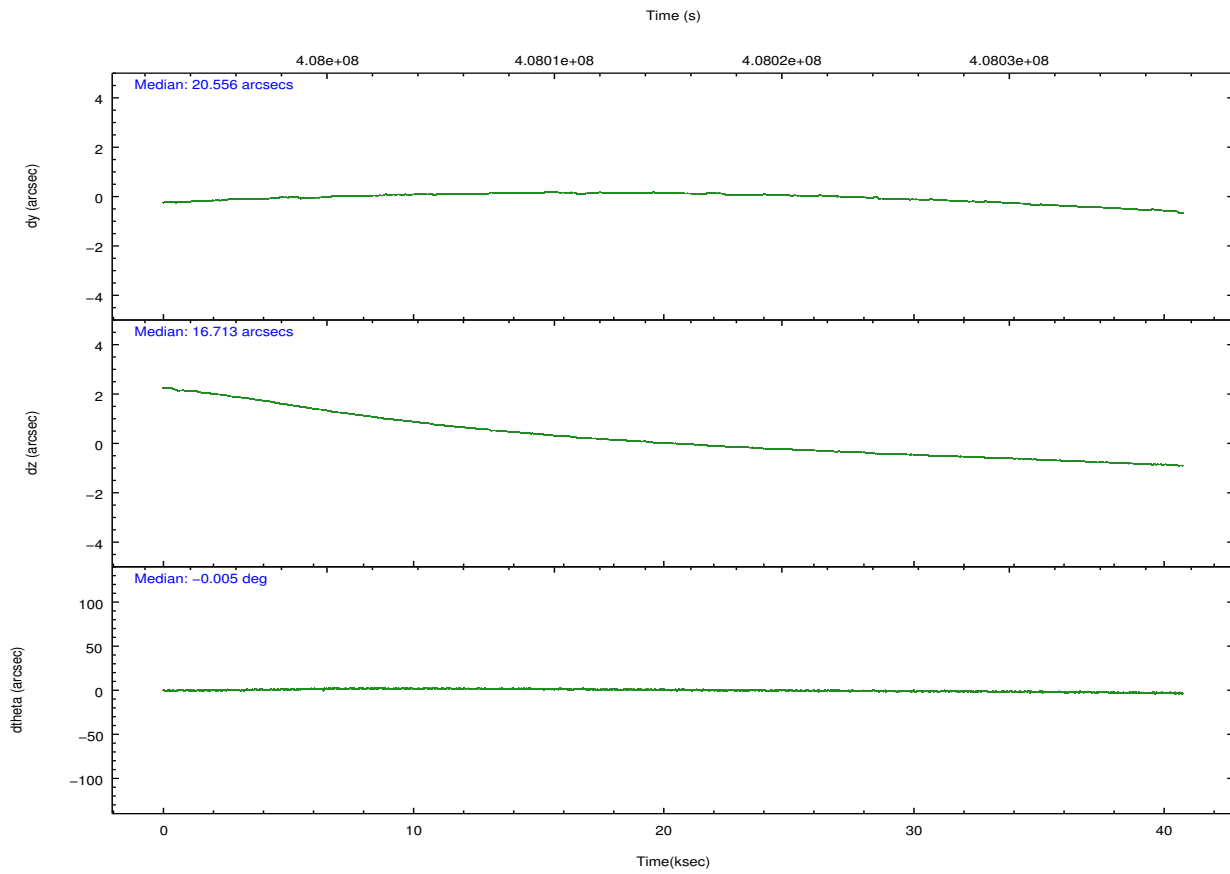
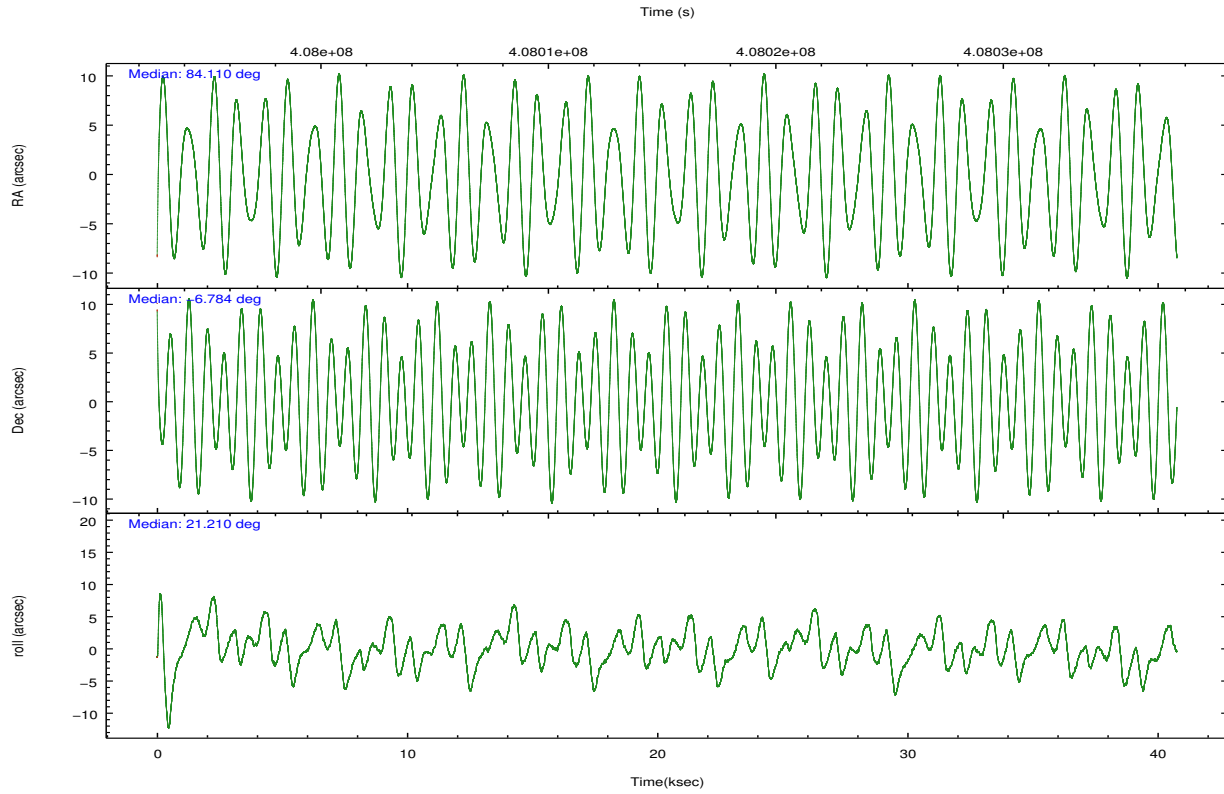
	ccd 4	ccd 5	ccd 6	ccd 7	ccd 8
grade 0 events	19792	25731	9771	12999	26189
	6%	9%	4%	7%	8%
grade 1 events	293	757	129	456	309
	0%	0%	0%	0%	0%
grade 2 events	6645	53811	5473	23862	21737
	2%	20%	2%	14%	7%
grade 3 events	2631	6829	2465	9838	9788
	0%	2%	1%	5%	3%
grade 4 events	2538	6513	2364	9587	9162
	0%	2%	0%	5%	3%
grade 5 events	5610	20297	5631	16979	9966
	1%	7%	2%	10%	3%
grade 6 events	3462	66573	4137	41339	23556
	1%	25%	1%	24%	7%
grade 7 events	245571	81359	211158	53122	201892
	85%	31%	87%	31%	66%

2.2 Compared Parameters

Parameter	Planned	Actual	Parameter	Planned	Actual
Instrument	ACIS	ACIS	Obspar format version number	7	7
Detector	ACIS-45678	ACIS-45678	Obspar file type	PREDICTED	ACTUAL
Grating	NONE	NONE	Obspar update status	NONE	UPDATED
Data mode	VFAINT	VFAINT	Number of optional ACIS chips dropped	0	0
Observation mode	POINTING	POINTING	On-chip summing requested	N	N
[deg] Pointing RA	84.093076	84.11003826224243	Subarray requested	NONE	NONE
[deg] Pointing Dec	-6.805430	-6.783888887067791	Alternating exposures requested	N	N
[deg] Pointing Roll	21.056653	21.21527897804674	[s] Primary exposure time	0.000000	3.1
[mm] SIM focus pos	-0.684267	-0.6828225247311905			
[mm] SIM defocus	0	0.001444936568705701			
[mm] SIM translation stage pos	-190.132523	-190.1400660498719			
[mm] SIM translation stage offset	0	0.00754346686406393			
[s] Observation start time (MET)	407994974.184000	407993719.78232			
Observation start date	2010-12-06T03:55:08	2010-12-06T03:35:19			
[s] Observation end time (MET)	408035600.184000	408036624.74703			
Observation end date	2010-12-06T15:12:14	2010-12-06T15:30:24			
Read mode	TIMED	TIMED			

2.3 Aspect



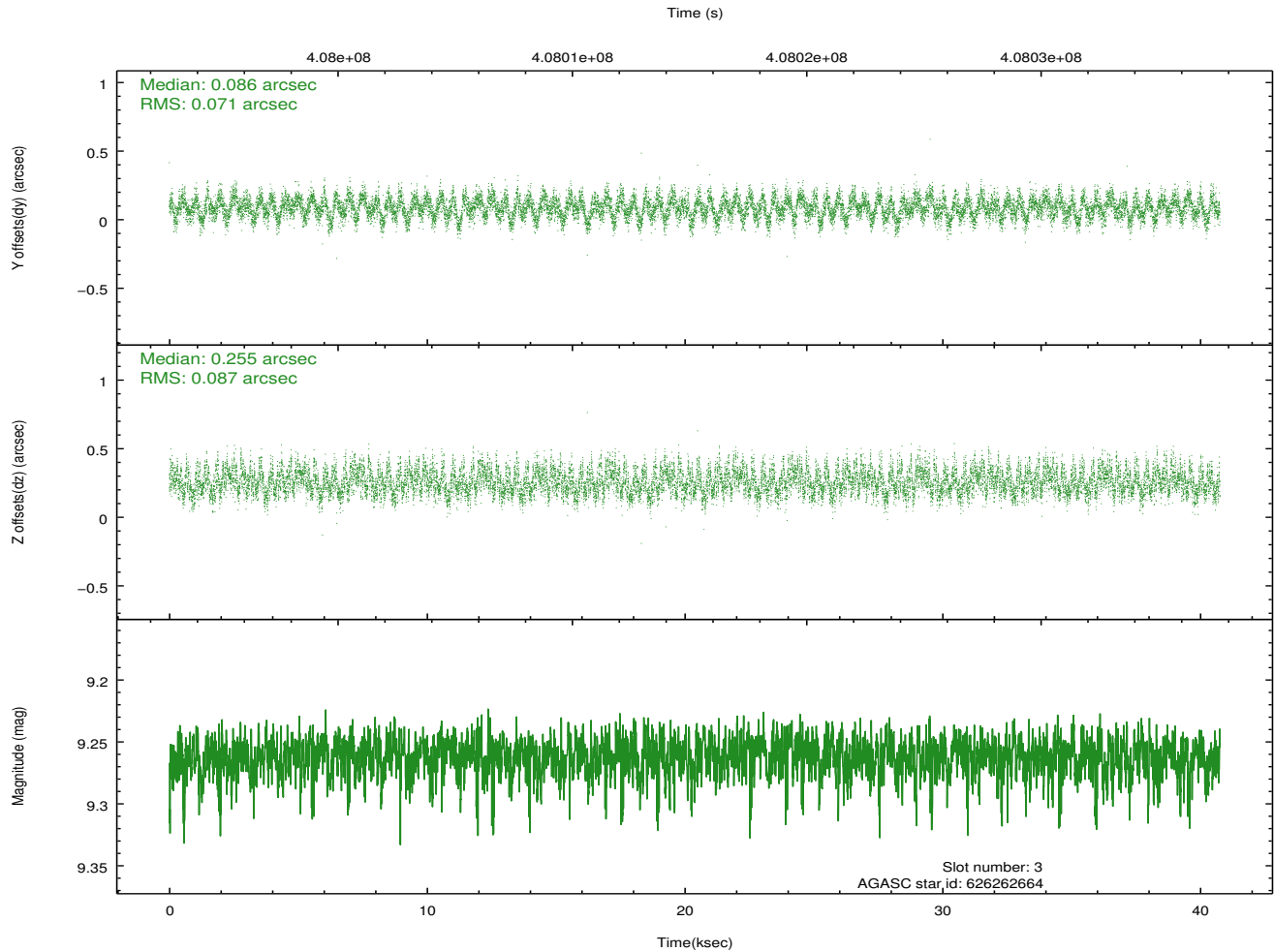
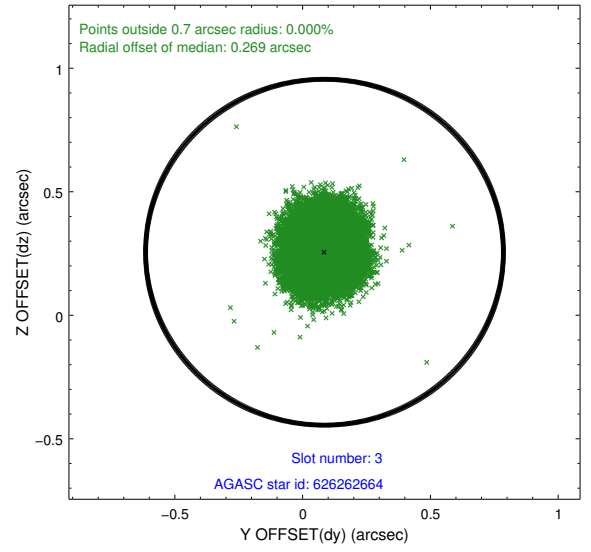
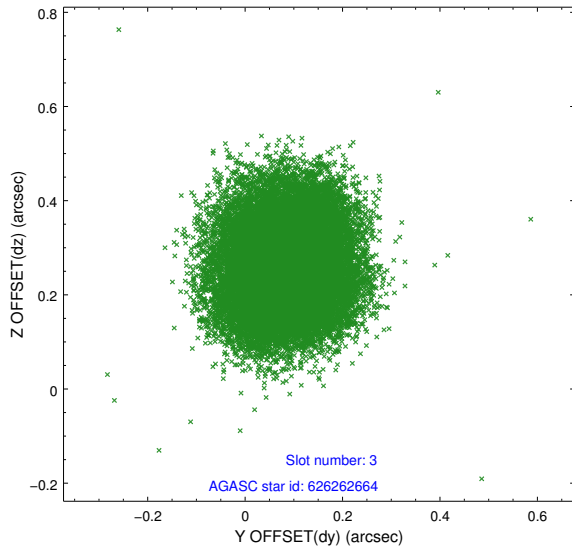


Slot Statistics

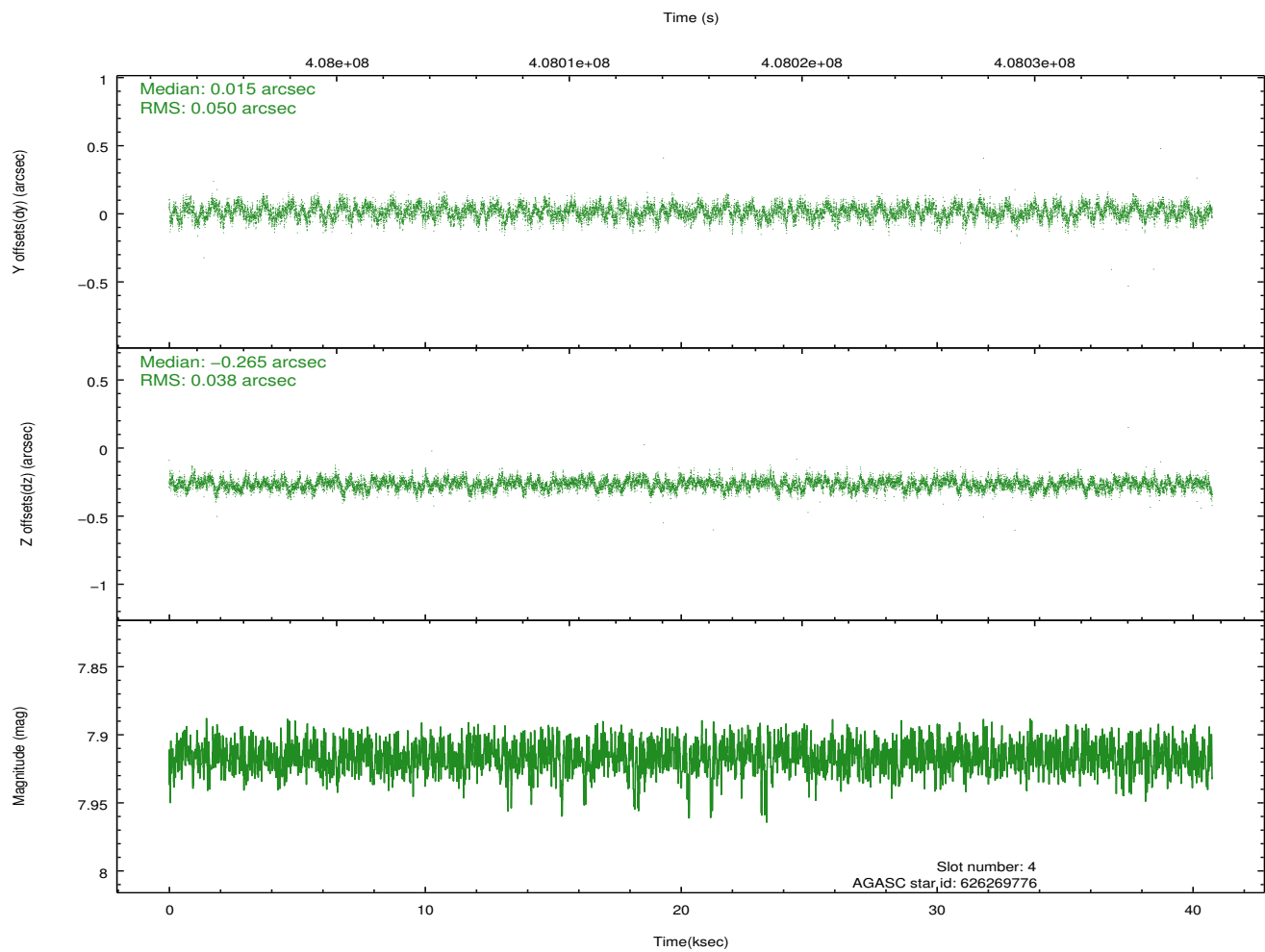
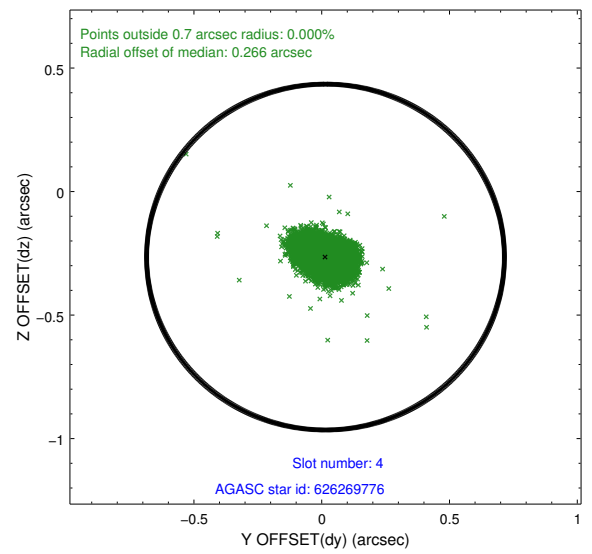
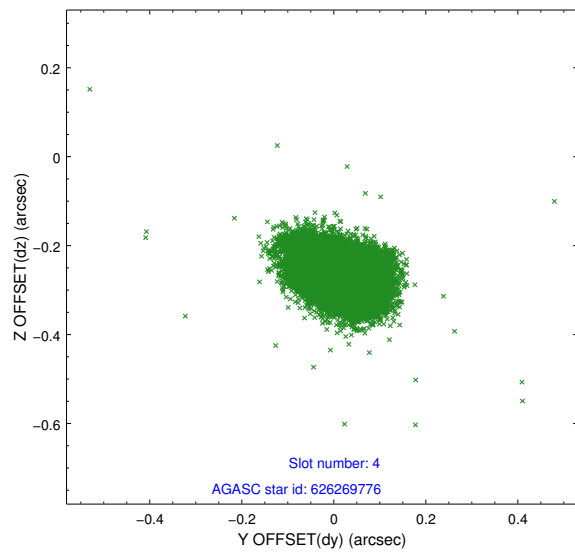
slot	status	id	mag	n_pts	med_dy	med_dz	dr1	dr2	ra	dec	mean_y	mean_z
0	FID	ACIS-S-1	7.00	9943	0.076	-0.094	0.020	0.080	0.000000	0.000000	922.50	-1734.10
1	FID	ACIS-S-5	7.05	9943	-0.133	0.044	0.015	0.023	0.000000	0.000000	-1826.69	163.57
2	FID	ACIS-S-6	7.15	9940	0.034	0.067	0.034	0.090	0.000000	0.000000	388.01	807.55
3	GUIDE	626262664	9.26	19786	0.086	0.255	0.121	0.188	83.922249	-7.374043	-1302.46	-1690.33
4	GUIDE	626269776	7.92	19879	0.015	-0.265	0.066	0.107	83.358607	-6.532867	-2099.66	1857.38
5	GUIDE	626273280	7.89	19880	0.067	0.235	0.075	0.118	84.025977	-7.396474	-987.61	-1899.23
6	GUIDE	626396736	8.51	19867	-0.141	-0.193	0.094	0.145	84.507196	-6.393921	1914.54	849.51
7	GUIDE	626272848	8.55	19868	-0.032	-0.032	0.088	0.141	84.129003	-6.453841	574.97	1135.26

2.4 Star Slots

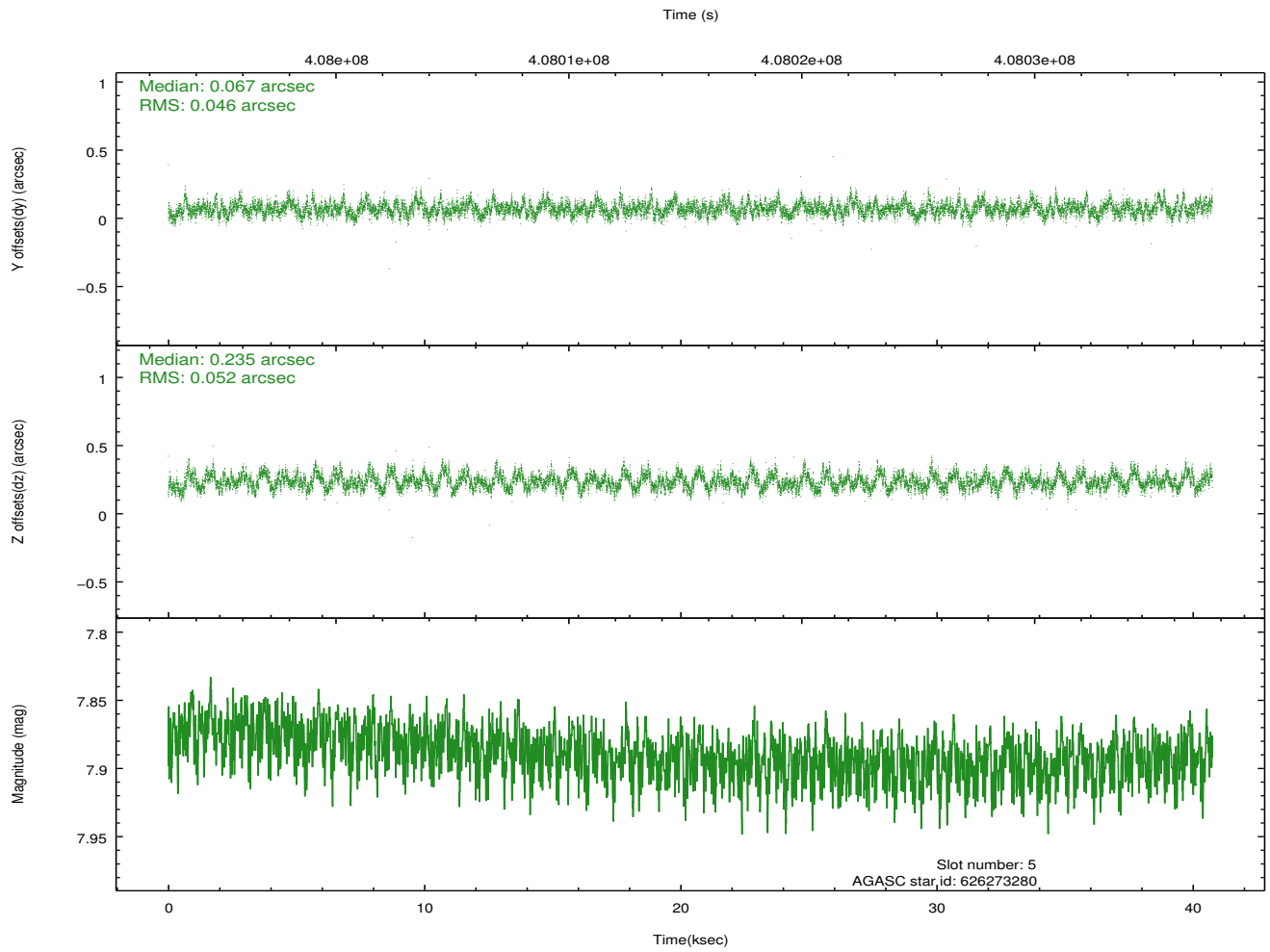
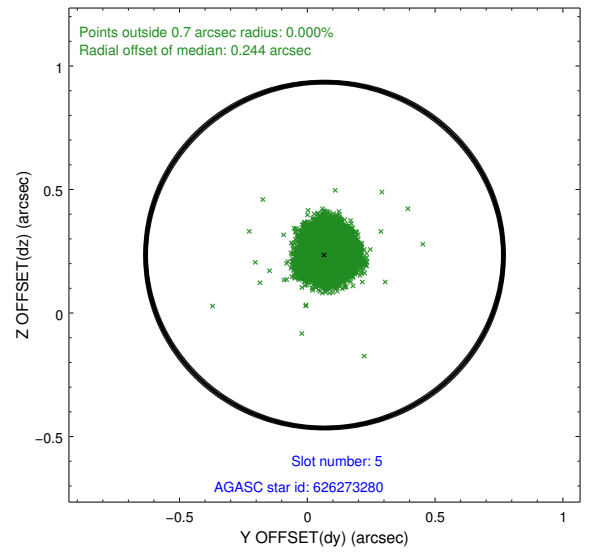
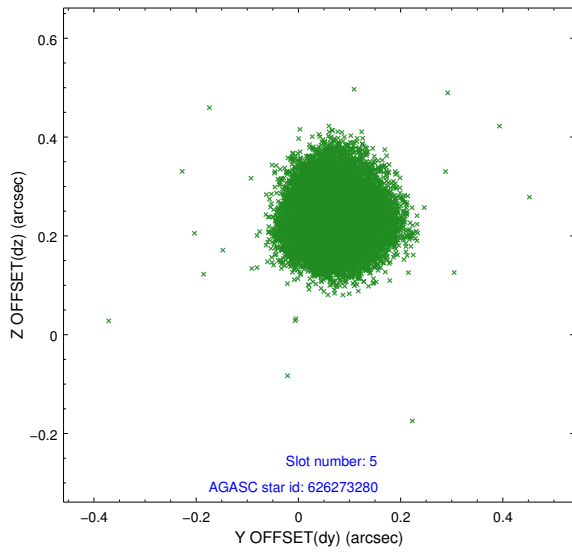
2.4.1 Slot 3



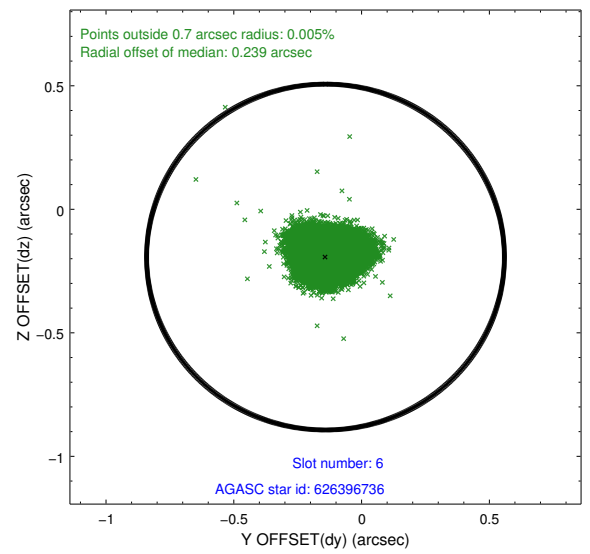
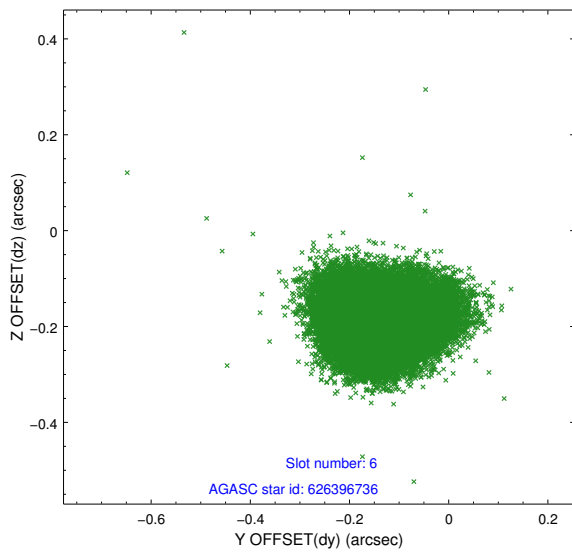
2.4.2 Slot 4



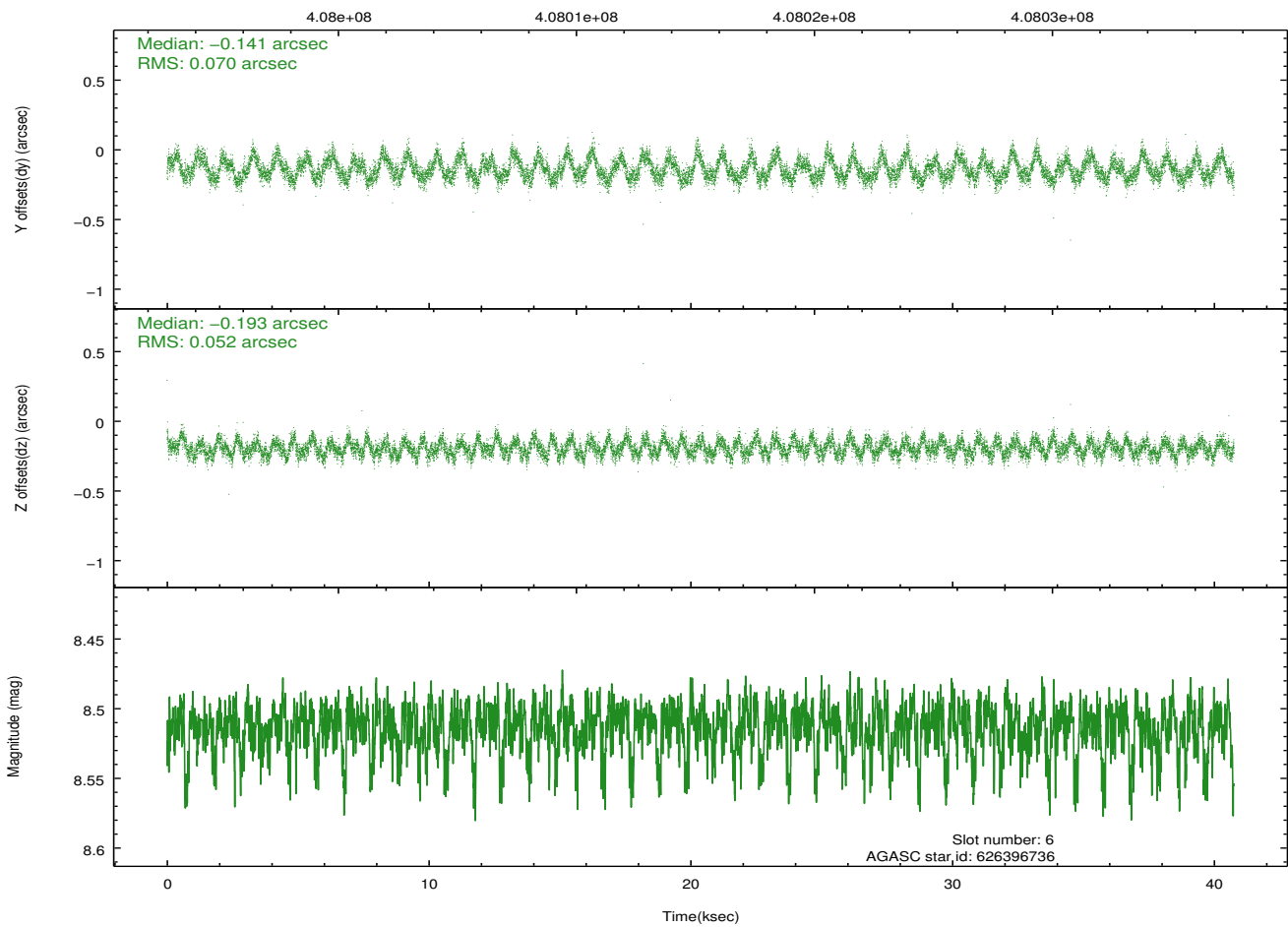
2.4.3 Slot 5



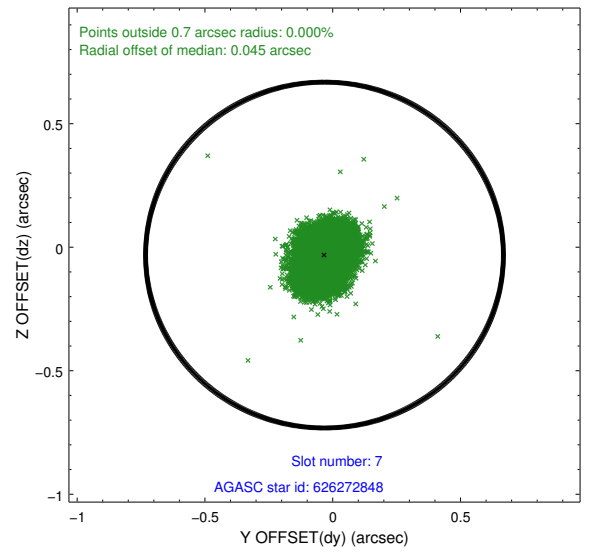
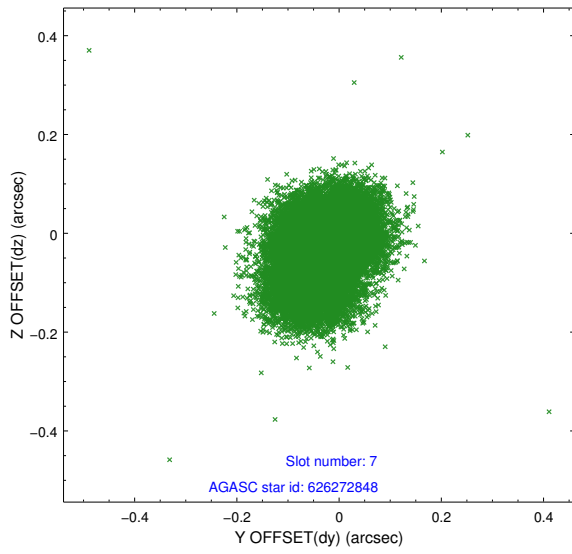
2.4.4 Slot 6



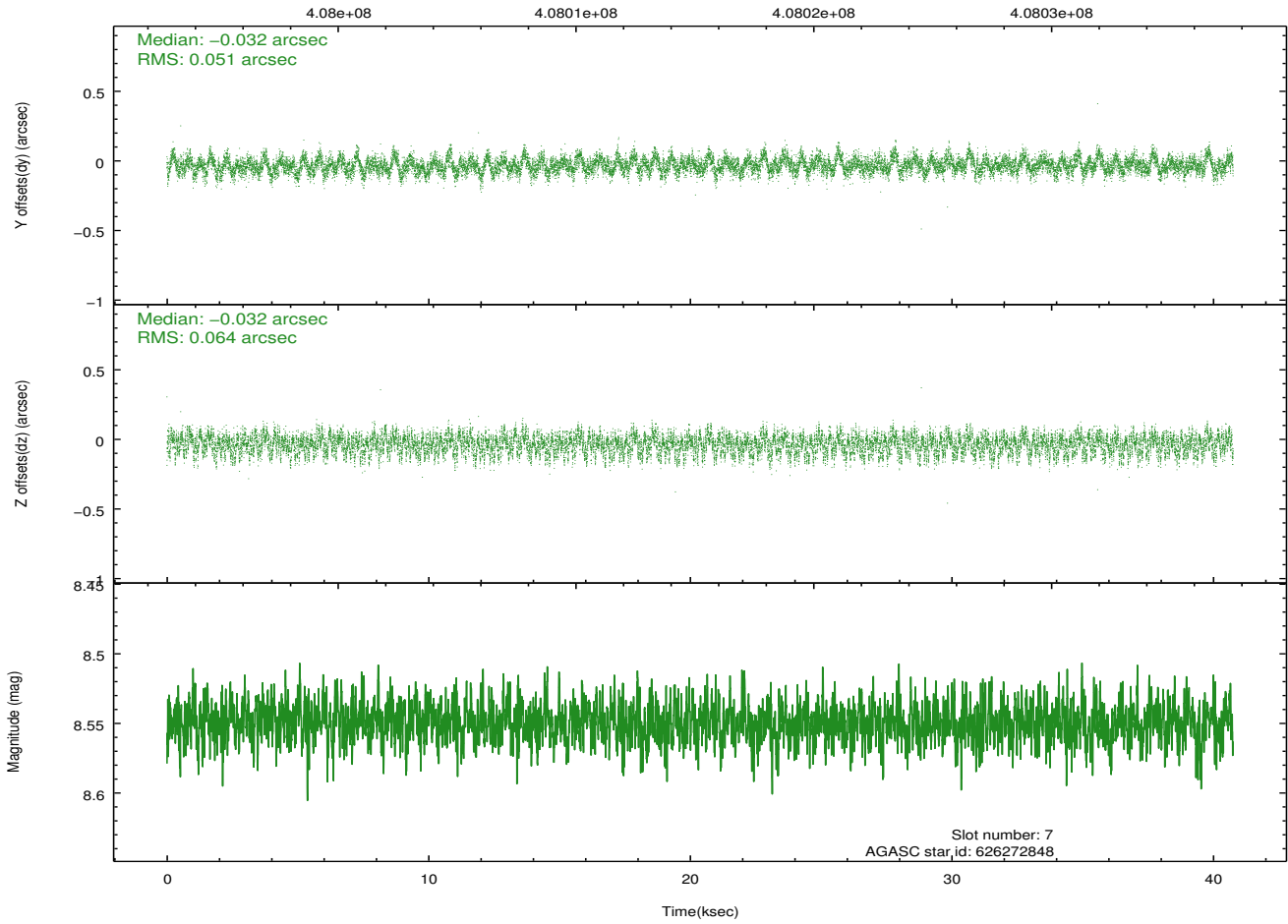
Time (s)



2.4.5 Slot 7

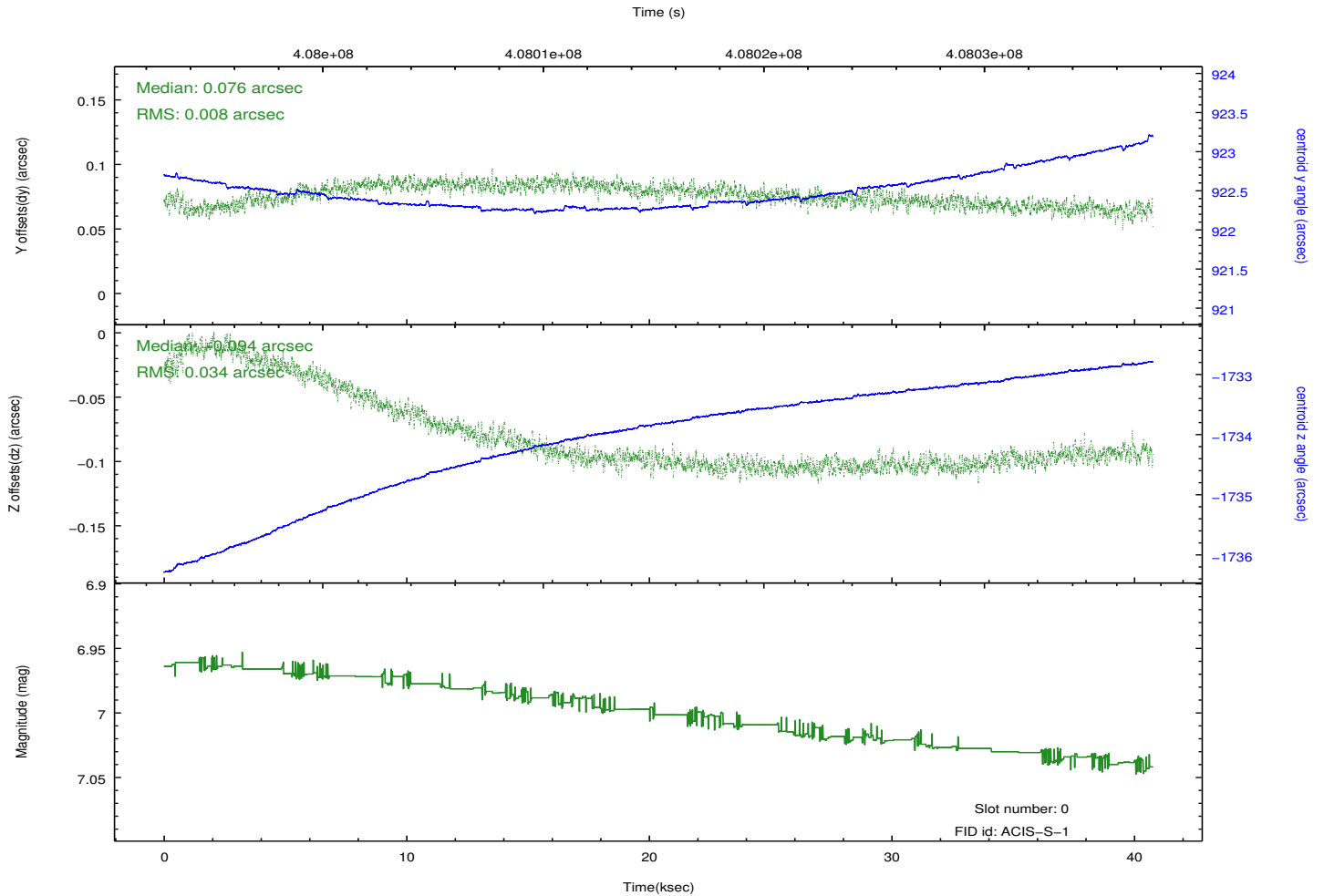
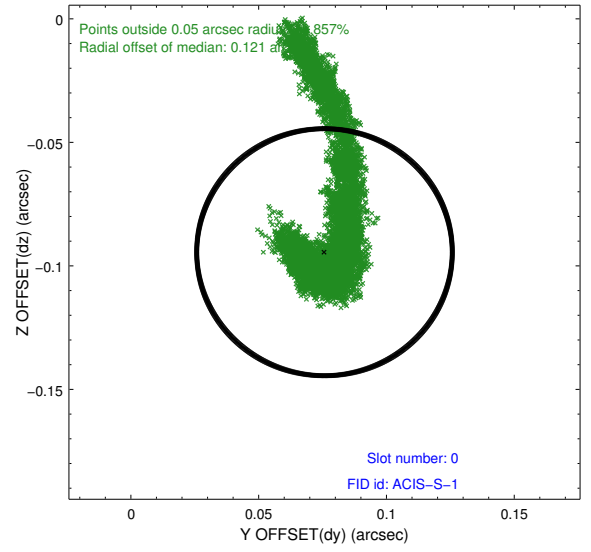
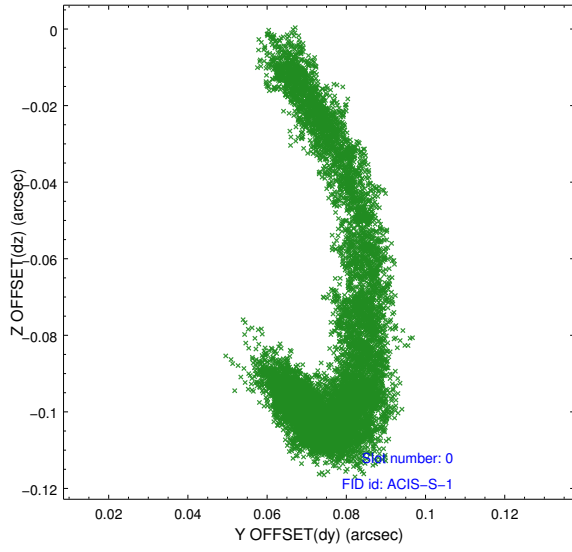


Time (s)

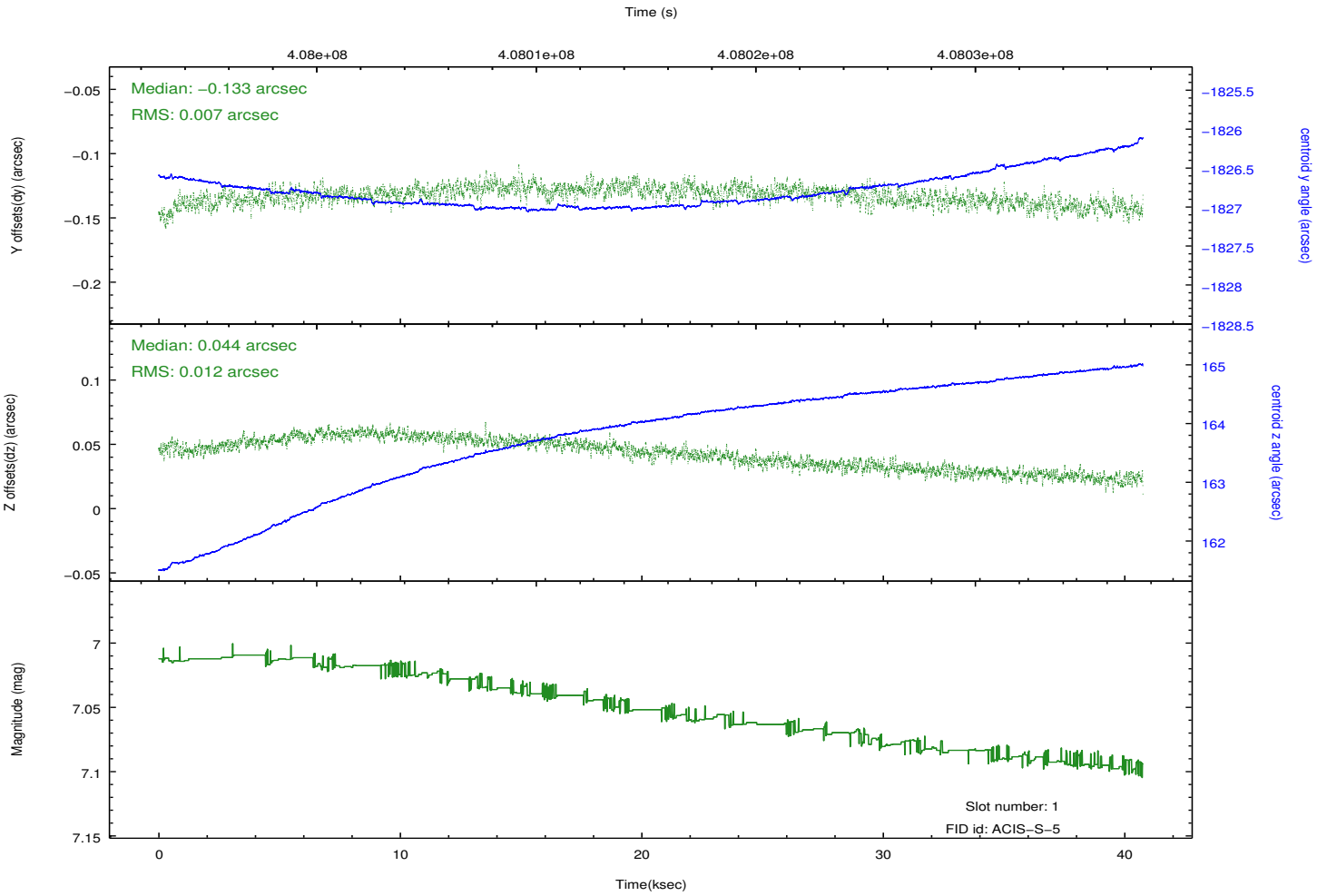
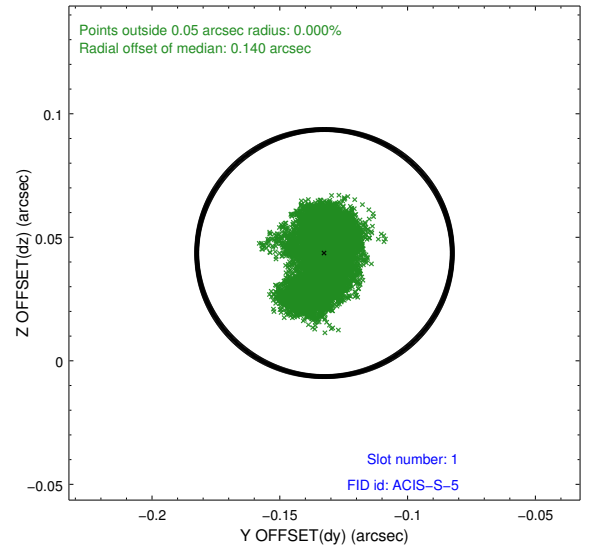
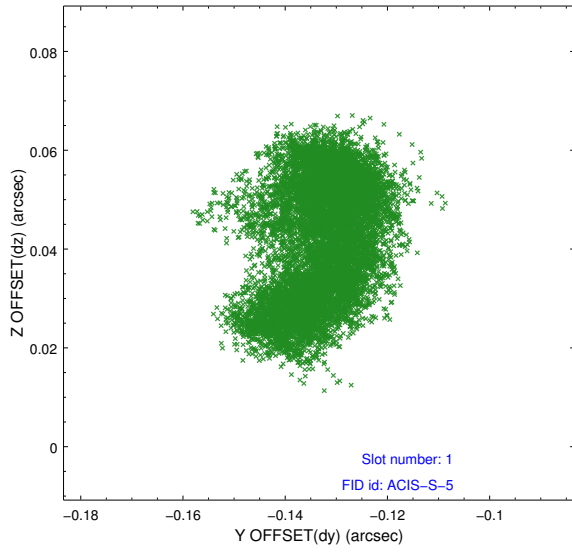


2.5 FID Slots

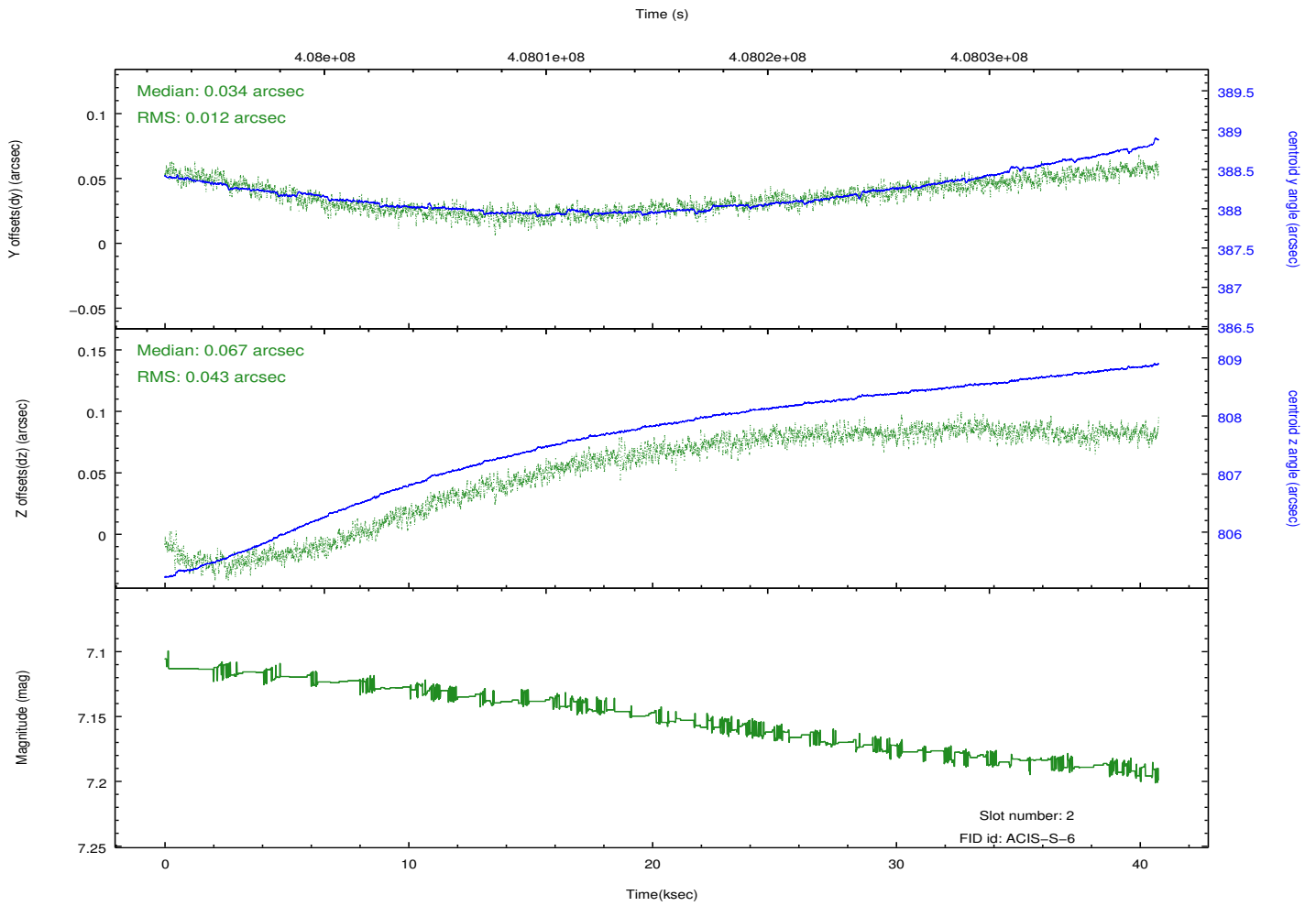
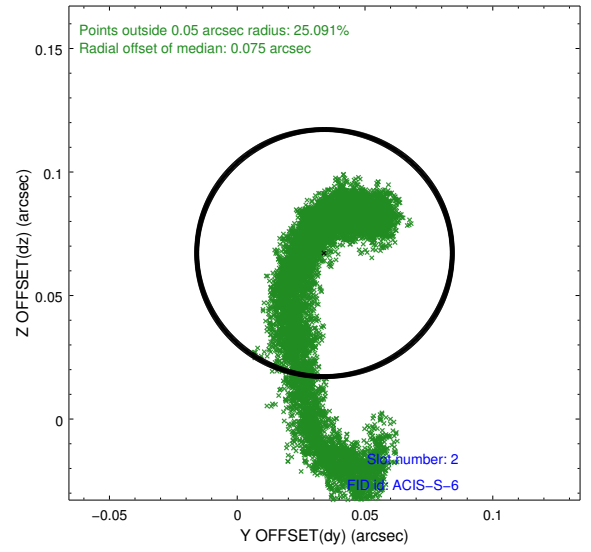
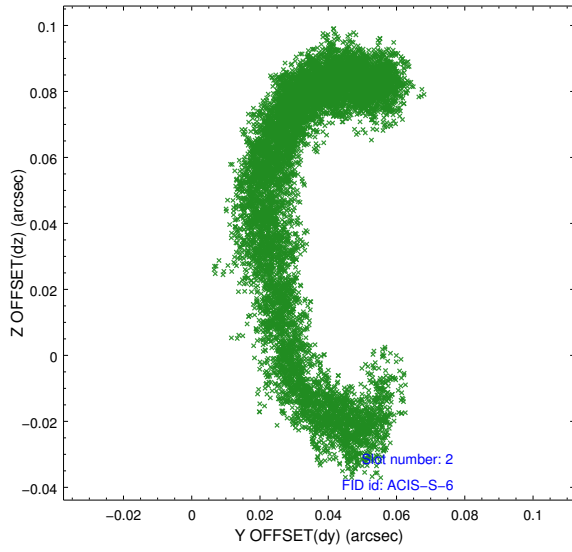
2.5.1 Slot 0



2.5.2 Slot 1



2.5.3 Slot 2



A Summary

A.1 Status

V&V Scientist	Jen Lauer
V&V Date (YYYY-MM-DD)	2012.07.17
V&V Edition	1
V&V Disposition and Status	OK
V&V Charge Time	40.658233474255

A.2 Comments