

V&V Reference Report

L2 ASCDS Version : 8.4.5

Observation 13181 - L2 Version 2
Chandra X-Ray Center

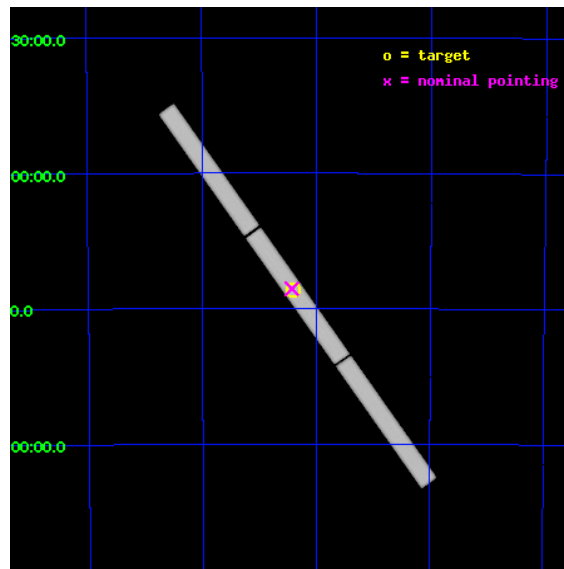
L2 Processing Date : Jul 7 2012

Contents

| | | |
|----------|-------------------------------|-----------|
| 1 | Front | 2 |
| 2 | OBI | 3 |
| 2.1 | OBI | 3 |
| 2.1.1 | Images | 3 |
| 2.1.2 | Parameters | 4 |
| 2.1.3 | Events | 4 |
| 2.2 | Compared Parameters | 5 |
| 2.3 | Aspect | 6 |
| 2.4 | Star Slots | 9 |
| 2.4.1 | Slot 3 | 9 |
| 2.4.2 | Slot 4 | 10 |
| 2.4.3 | Slot 5 | 11 |
| 2.4.4 | Slot 6 | 12 |
| 2.4.5 | Slot 7 | 13 |
| 2.5 | FID Slots | 14 |
| 2.5.1 | Slot 0 | 14 |
| 2.5.2 | Slot 1 | 15 |
| 2.5.3 | Slot 2 | 16 |
| 3 | Gratings | 17 |
| 3.1 | LETG Arm | 17 |
| A | Summary | 19 |
| A.1 | Status | 19 |
| A.2 | Comments | 19 |

1 Front

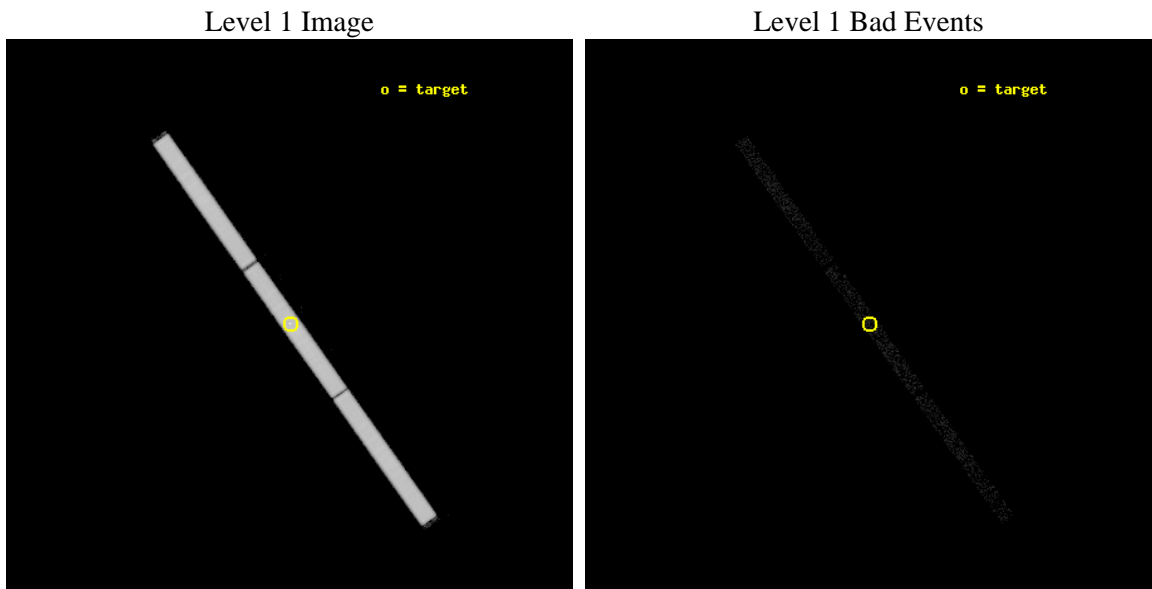
| | | |
|----------|---|---------------------------------------|
| seq_num | 501541 | Sequence number |
| obs_id | 13181 | Observation id |
| title | RXJ0720.4-3125: a precessing isolated neutron star? | Proposal title |
| observer | Dr. Peter Predehl | Principal investigator |
| object | RXJ0720.4-3125 | Source name |
| ra_targ | 110.104167 | Observer's specified target RA [deg] |
| dec_targ | -31.430611 | Observer's specified target Dec [deg] |
| ra_nom | 110.1075715998 | Nominal RA [deg] |
| dec_nom | -31.426765888388 | Nominal Dec [deg] |
| roll_nom | 54.469097700335 | Nominal Roll [deg] |
| revision | 2 | Processing version of data |
| ontime | 19979.301029503 | [s] |
| livetime | 19798.653780342 | Ontime multiplied by DTCOR |
| l2events | 1545148 | Number of level 2 events |



2 OBI

2.1 OBI

2.1.1 Images



2.1.2 Parameters

| | | | | | |
|----------|---------------------|--------------------------------|----------------|-----------------|---|
| obi_num | 0 | Obi number | sched_exp_time | 20000.000000 | [s] Scheduled observation exposure time |
| ascdsver | 8.4.5 | Processing system revision | ontime | 19979.301029503 | [s] |
| caldbver | 4.5.0 | | l1events | 1994295 | Number of level 1 events |
| date | 2012-07-07T03:23:44 | Date and time of file creation | | | |
| revision | 2 | Processing version of data | | | |

2.1.3 Events

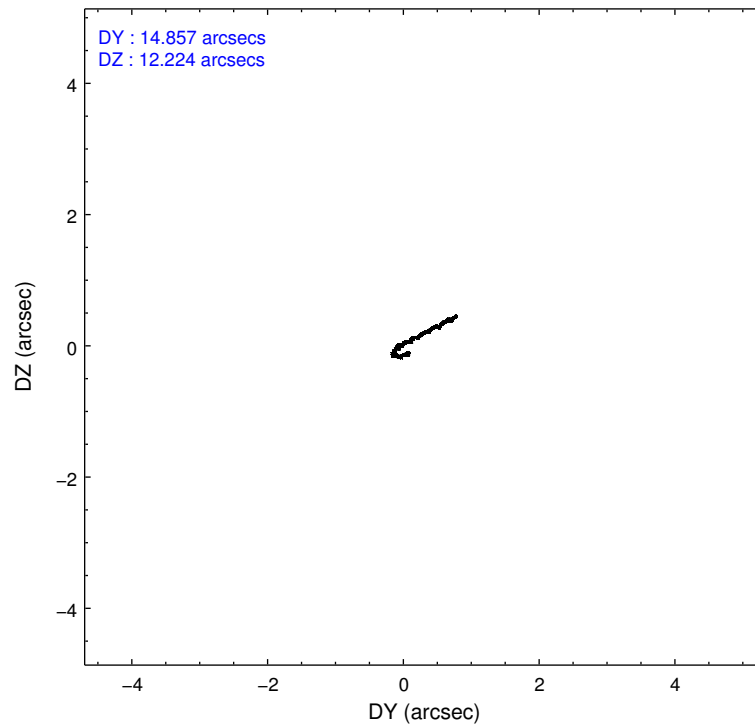
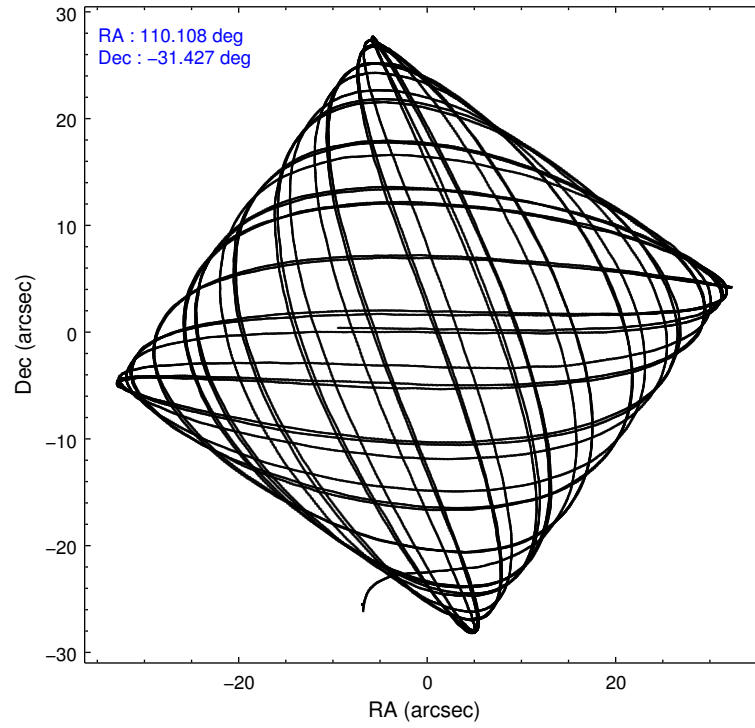
Level 1 Events

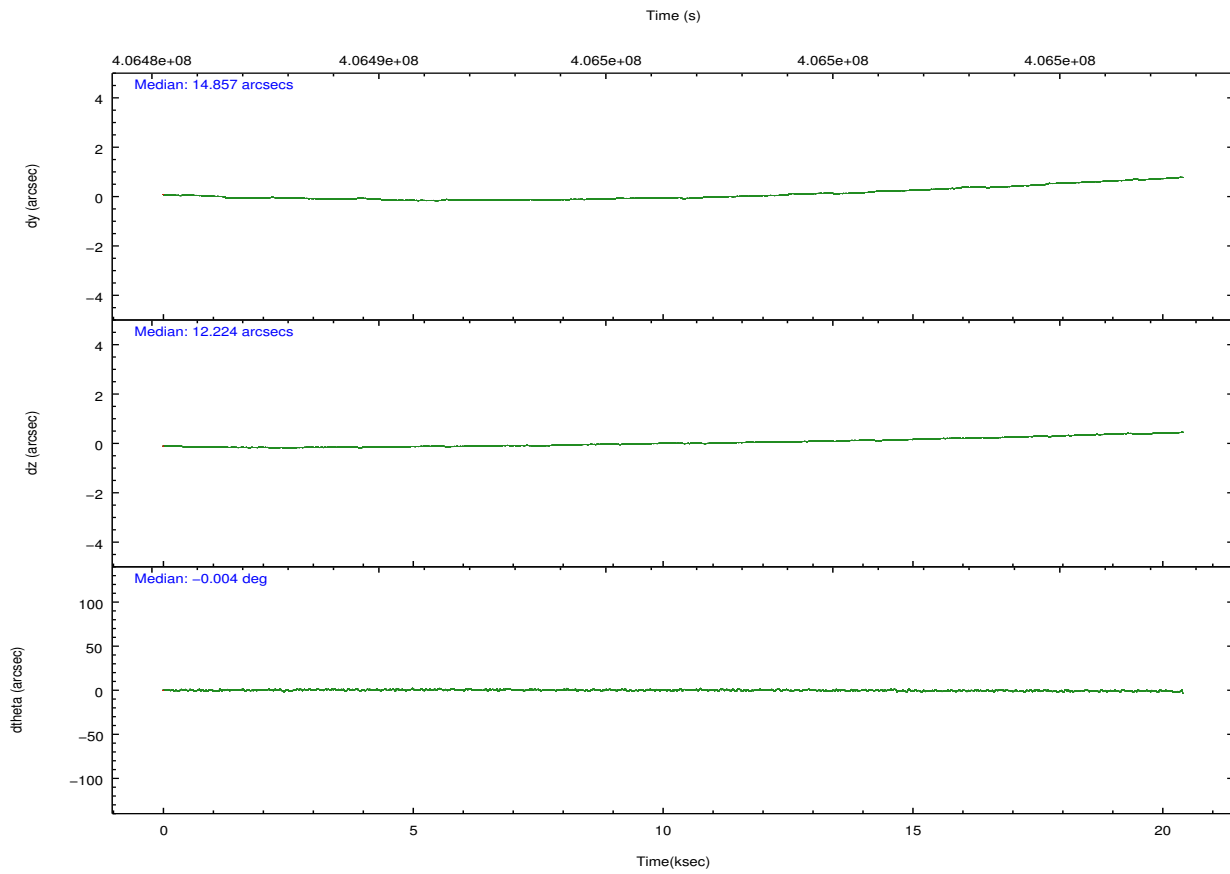
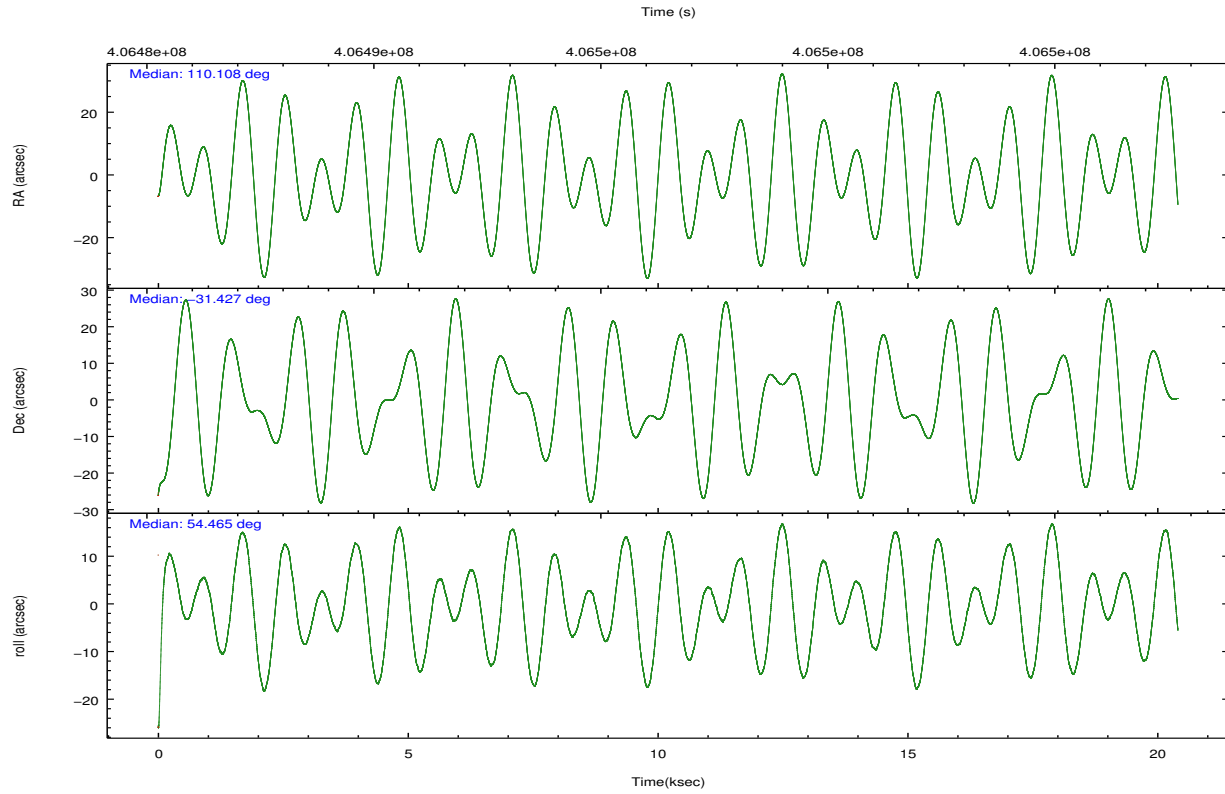
| | segment 1 | segment 2 | segment 3 |
|-----------------|----------------------|----------------------|----------------------|
| level 1 events | 662055 | 665180 | 667060 |
| rejected events | 2067 | 2309 | 2257 |
| rejected % | 0% | 0% | 0% |

2.2 Compared Parameters

| Parameter | Planned | Actual | Parameter | Planned | Actual |
|-----------------------------------|---------------------|-----------------------|------------------------------|-----------|---------|
| Instrument | HRC | HRC | Obspar format version number | 7 | 7 |
| Detector | HRC-S | HRC-S | | | |
| Grating | LETG | LETG | | | |
| Data mode | OBSERVING | OBSERVING | Obspar file type | PREDICTED | ACTUAL |
| Observation mode | POINTING | POINTING | | | |
| [deg] Pointing RA | 110.105909 | 110.107571599805 | Obspar update status | NONE | UPDATED |
| [deg] Pointing Dec | -31.455452 | -31.42676588838776 | | | |
| [deg] Pointing Roll | 54.400909 | 54.46909770033496 | | | |
| [mm] SIM focus pos | -1.429586 | -1.428180813131781 | | | |
| [mm] SIM defocus | 0.1037507710433287 | 0.1051558262725154 | | | |
| [mm] SIM translation stage pos | 250.455976 | 250.4635187648994 | | | |
| [mm] SIM translation stage offset | 0 | -0.007540371344731511 | | | |
| [s] Observation start time (MET) | 406486674.184000 | 406485442.96708 | | | |
| Observation start date | 2010-11-18T16:56:48 | 2010-11-18T16:37:22 | | | |
| [s] Observation end time (MET) | 406506674.184000 | 406507450.74321 | | | |
| Observation end date | 2010-11-18T22:30:08 | 2010-11-18T22:44:10 | | | |

2.3 Aspect



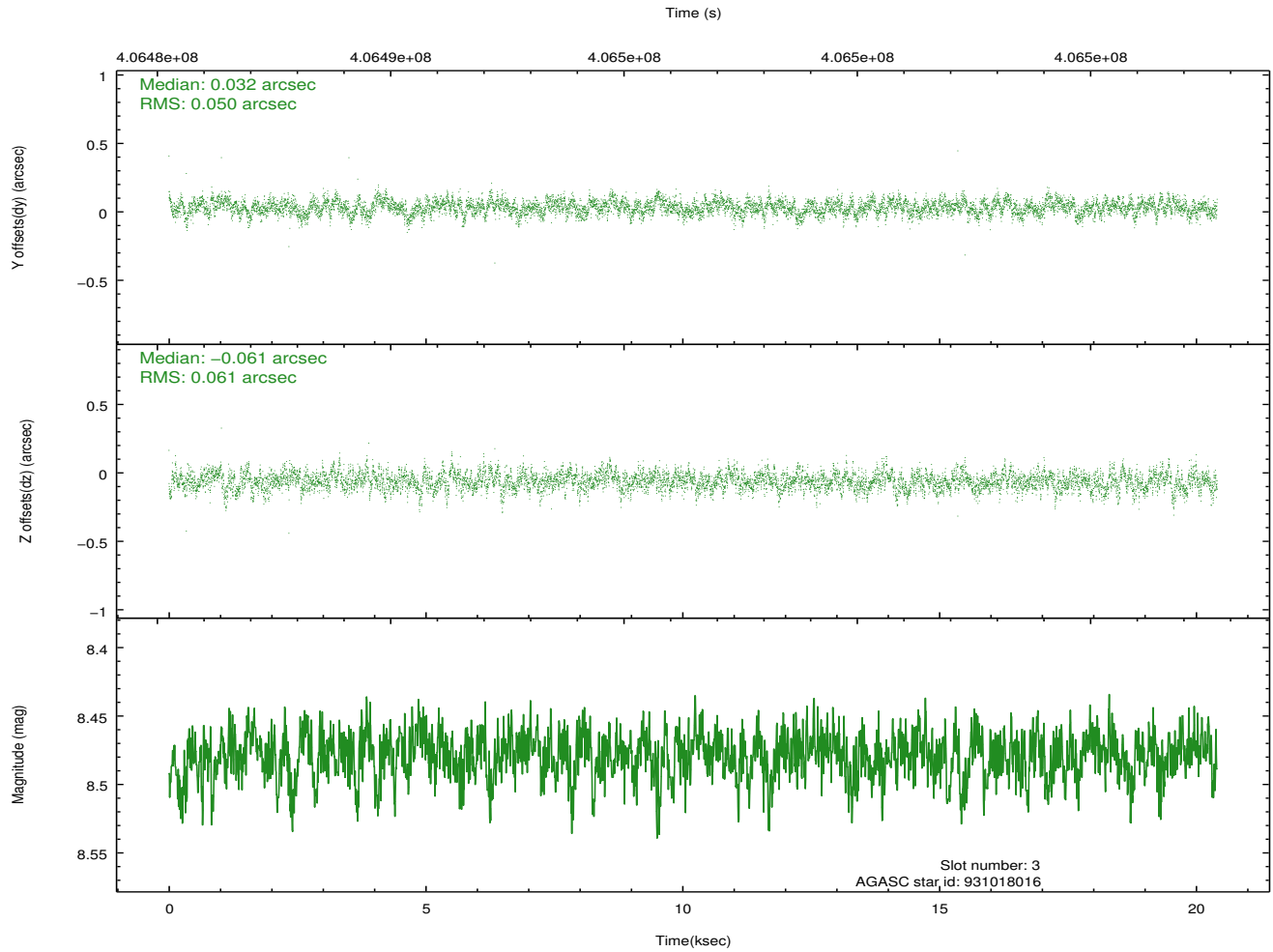
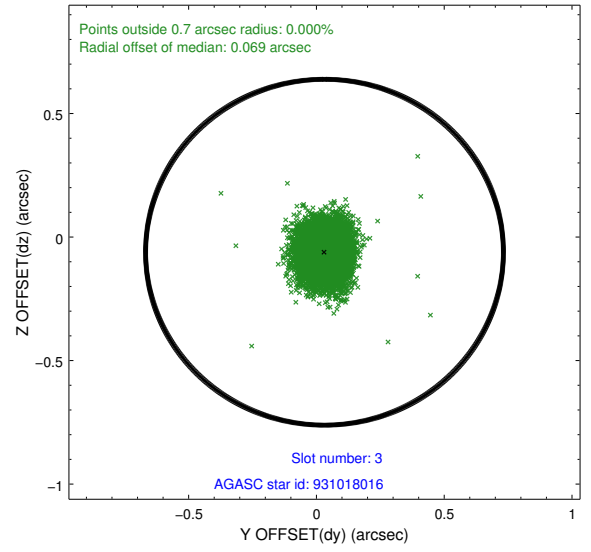
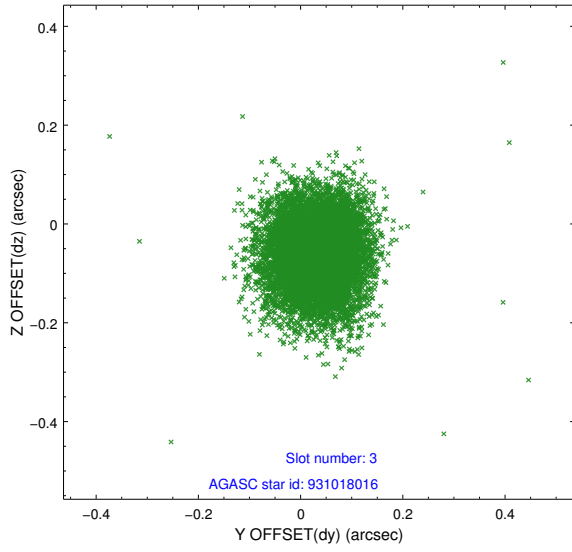


Slot Statistics

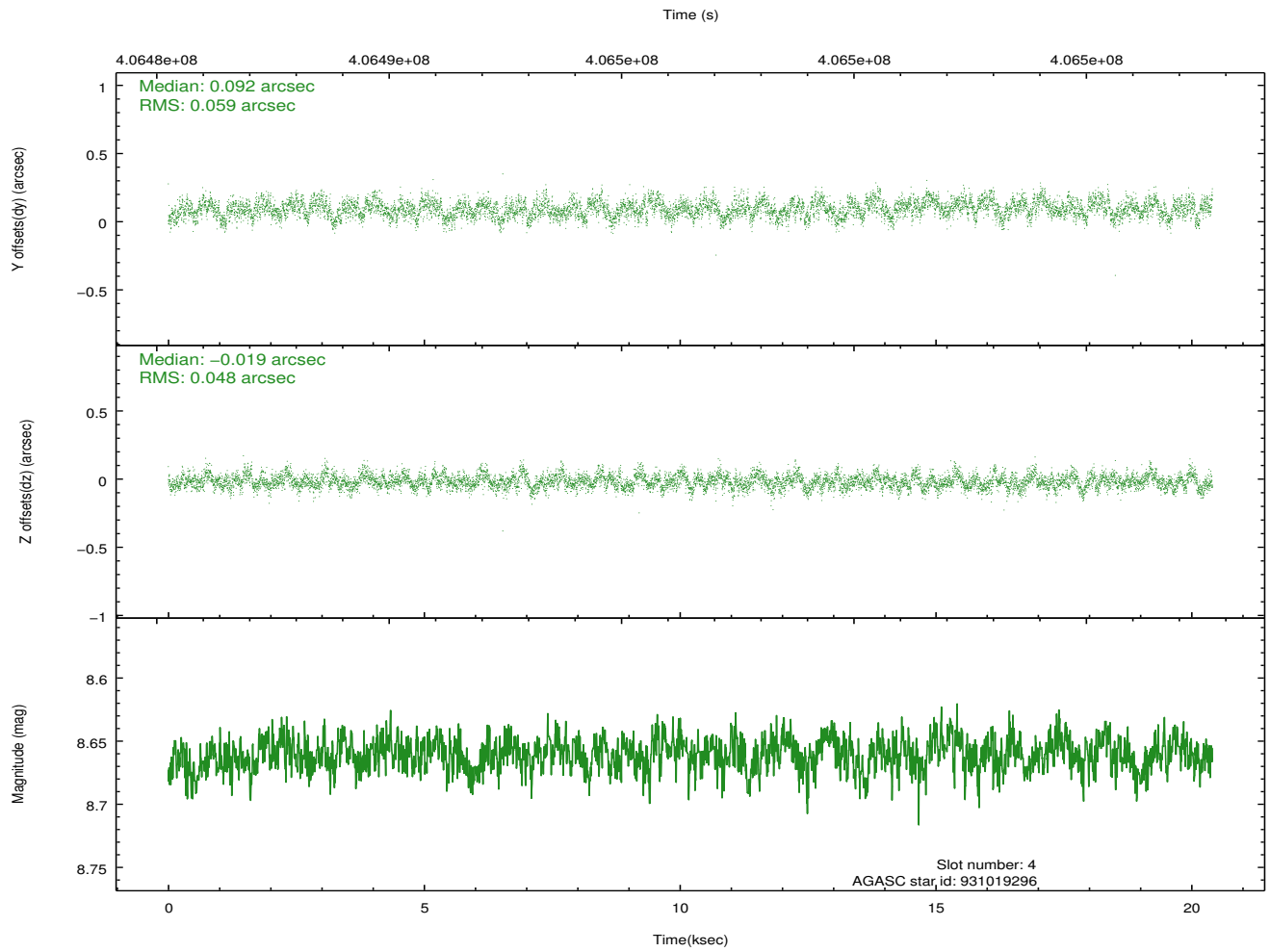
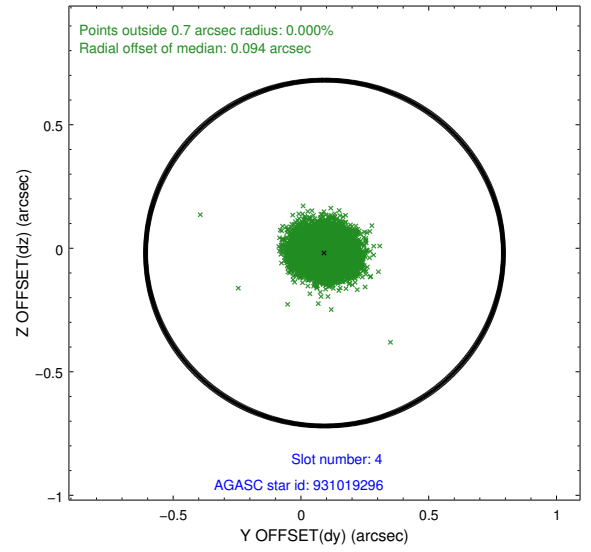
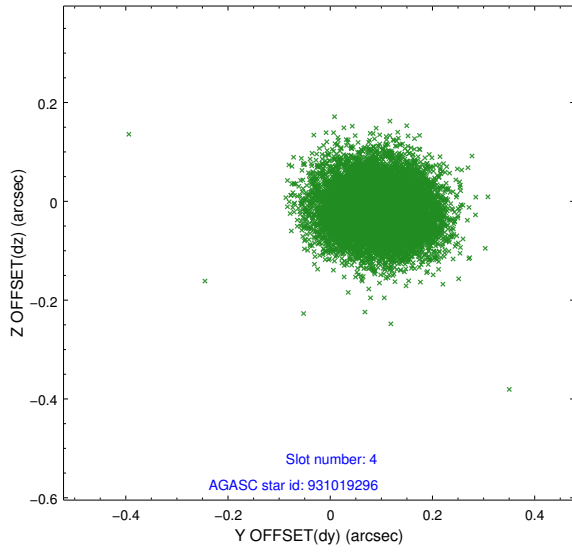
| slot | status | id | mag | n_pts | med_dy | med_dz | dr1 | dr2 | ra | dec | mean_y | mean_z |
|------|--------|-----------|------|-------|--------|--------|-------|-------|------------|------------|----------|----------|
| 0 | FID | HRC-S-1 | 7.07 | 4978 | 0.059 | -0.148 | 0.010 | 0.017 | 0.000000 | 0.000000 | -1169.40 | -460.99 |
| 1 | FID | HRC-S-2 | 7.03 | 4978 | 0.240 | -0.117 | 0.008 | 0.019 | 0.000000 | 0.000000 | 1230.23 | -453.67 |
| 2 | FID | HRC-S-3 | 7.05 | 4978 | 0.091 | -0.037 | 0.009 | 0.015 | 0.000000 | 0.000000 | -1171.85 | 568.56 |
| 3 | GUIDE | 931018016 | 8.48 | 9946 | 0.032 | -0.061 | 0.081 | 0.137 | 109.684535 | -31.226562 | -87.30 | 1533.24 |
| 4 | GUIDE | 931019296 | 8.66 | 9951 | 0.092 | -0.019 | 0.081 | 0.131 | 109.471771 | -31.694370 | -1835.37 | 1075.75 |
| 5 | GUIDE | 931160352 | 8.63 | 9950 | -0.147 | -0.072 | 0.070 | 0.112 | 110.268138 | -30.864891 | 2019.92 | 830.56 |
| 6 | GUIDE | 931163512 | 8.47 | 9955 | -0.021 | 0.137 | 0.094 | 0.153 | 110.894384 | -31.299941 | 1860.29 | -1650.61 |
| 7 | GUIDE | 931012368 | 8.75 | 9944 | 0.047 | 0.015 | 0.080 | 0.129 | 109.359817 | -31.783345 | -2295.07 | 1164.89 |

2.4 Star Slots

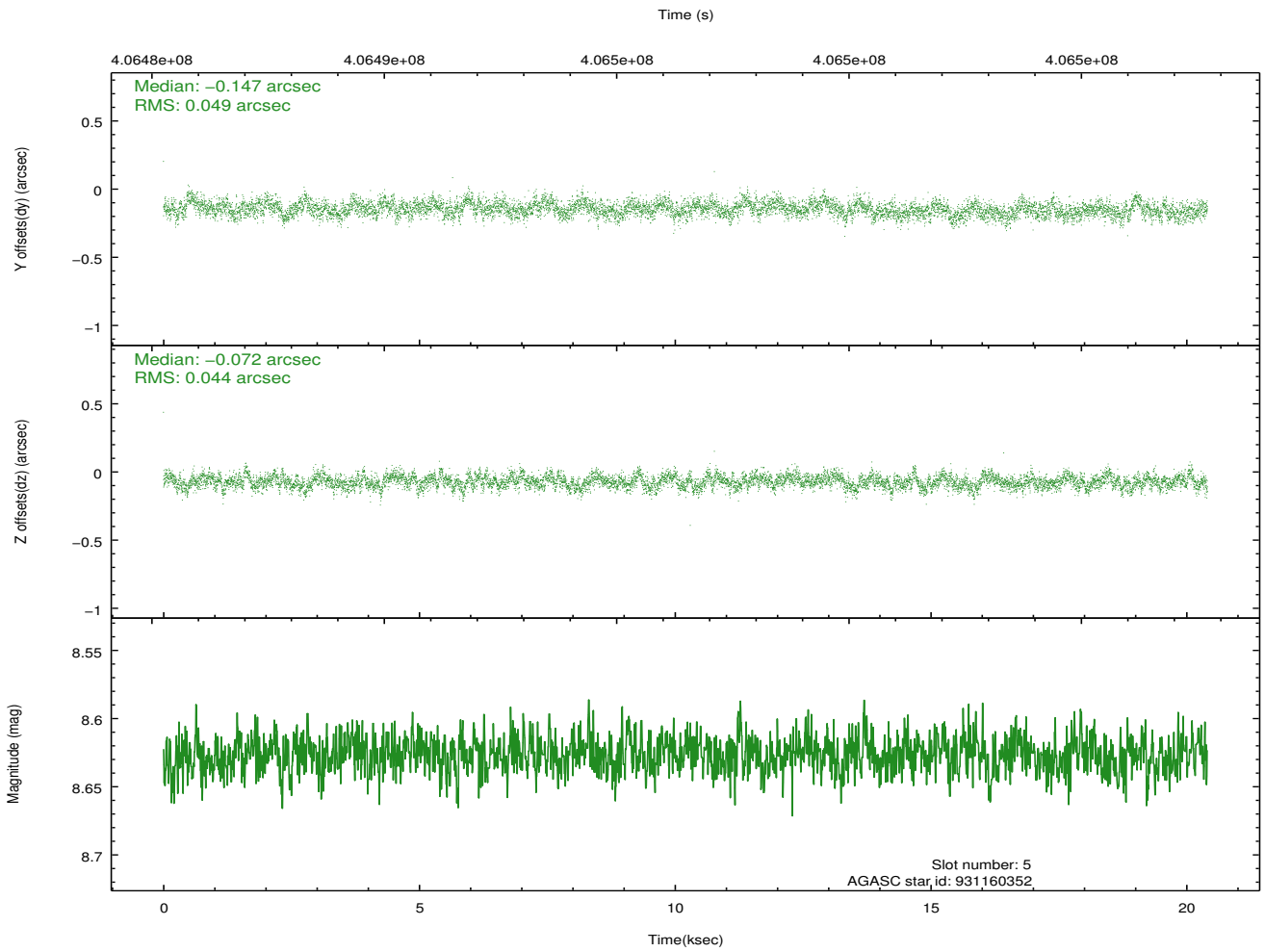
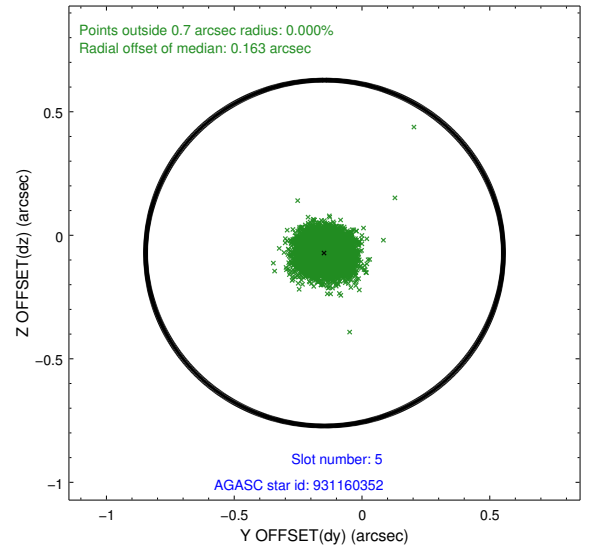
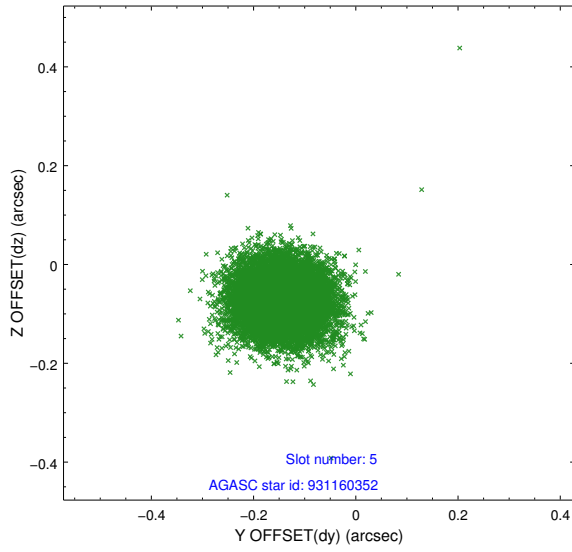
2.4.1 Slot 3



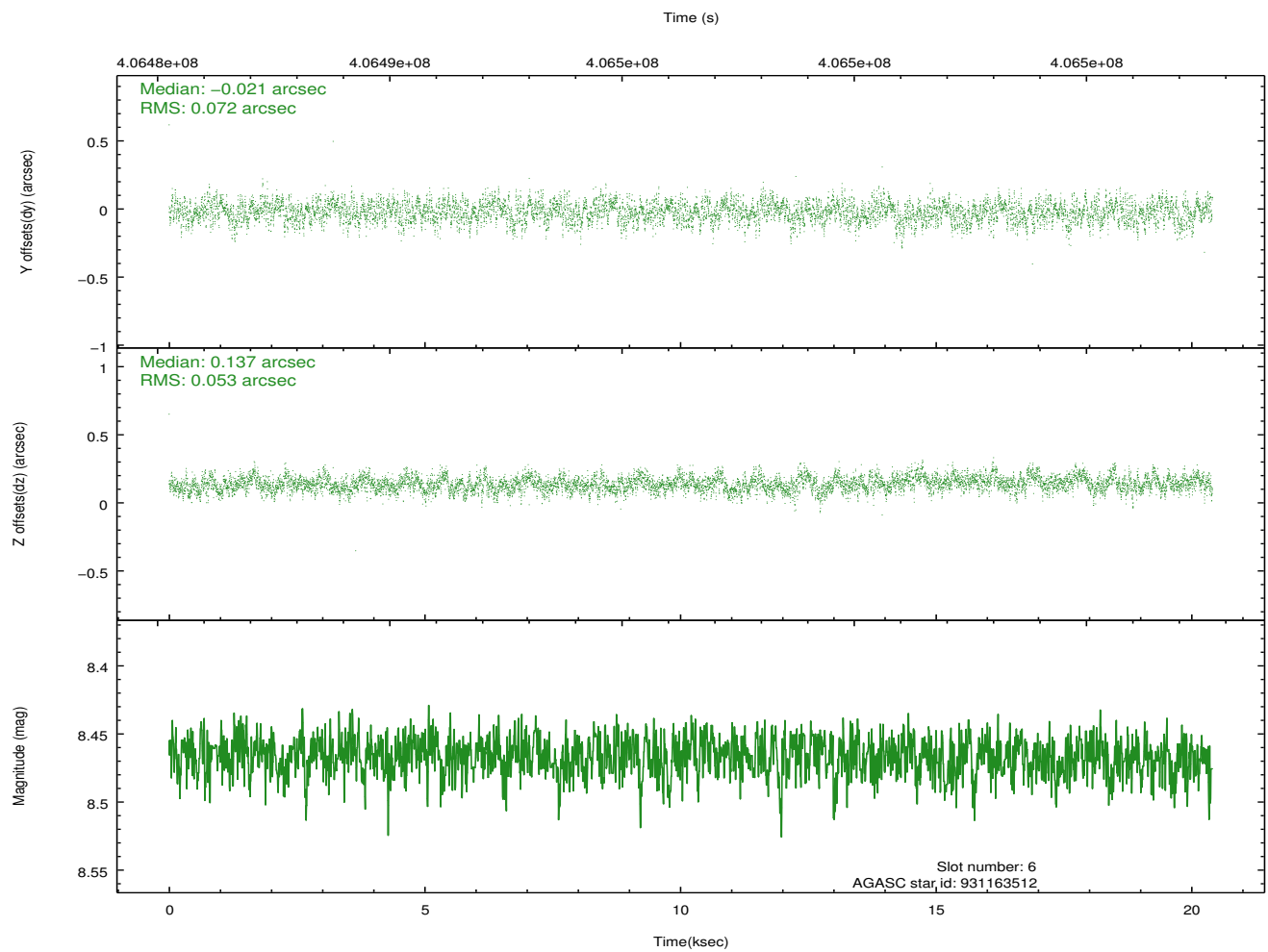
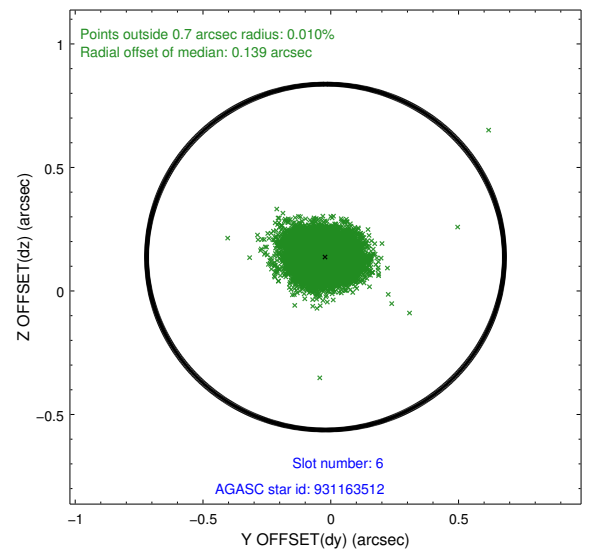
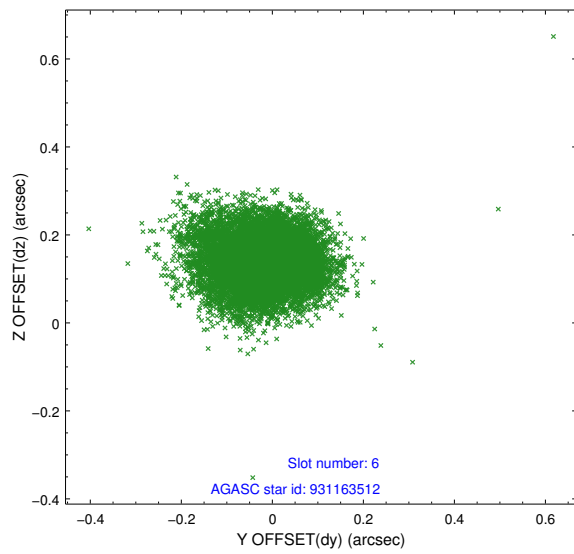
2.4.2 Slot 4



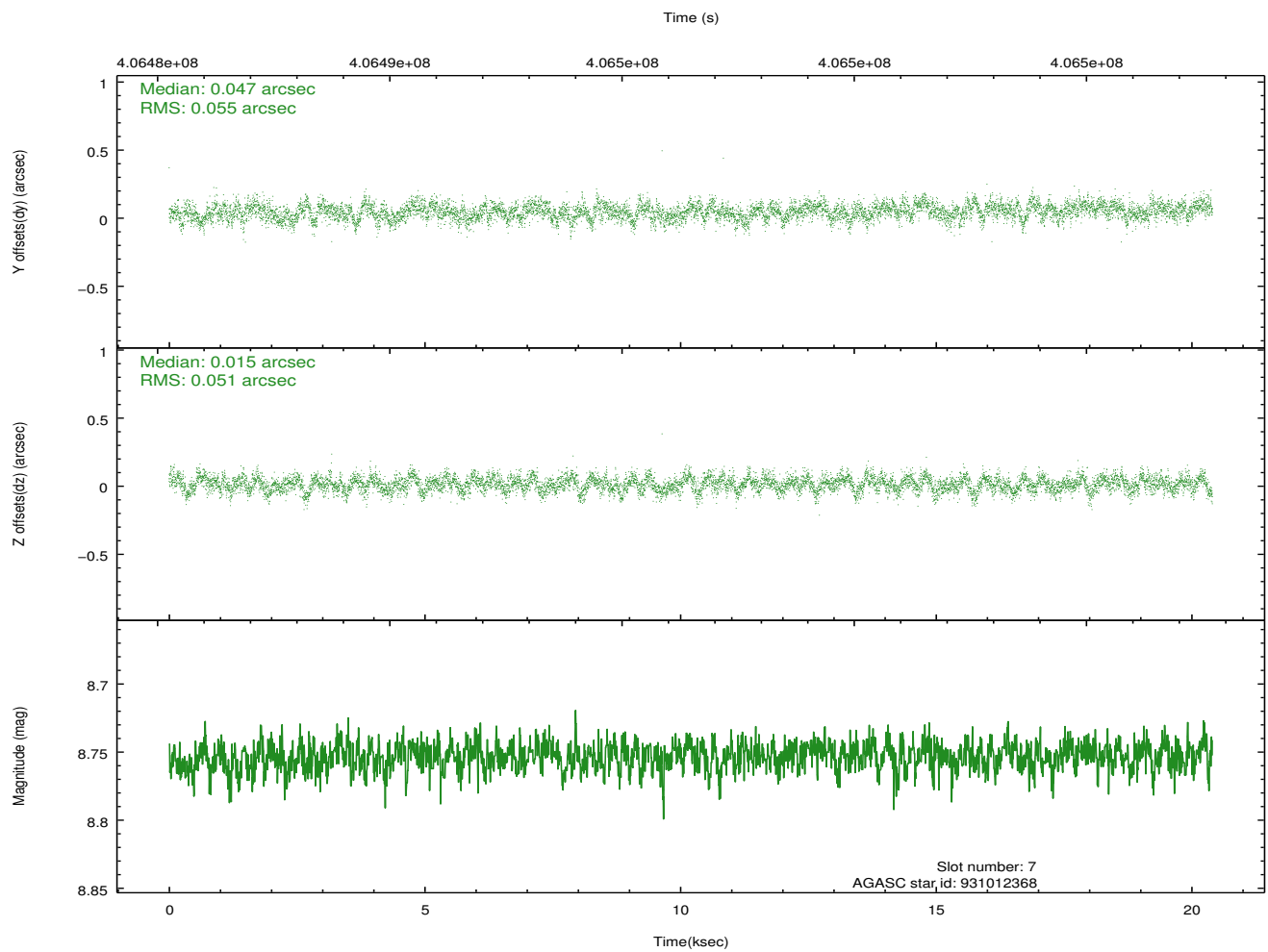
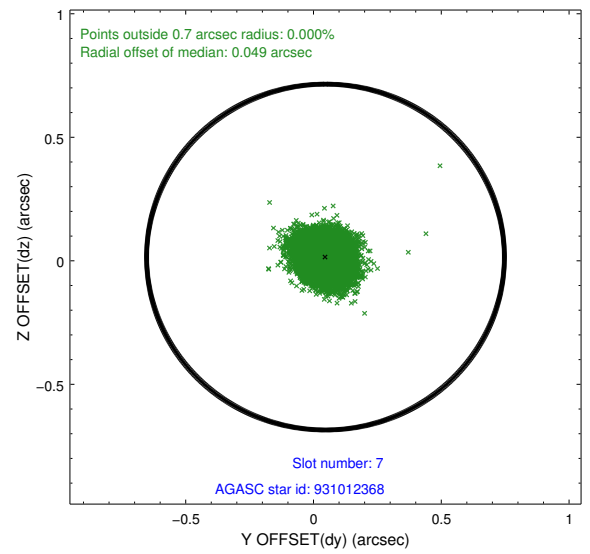
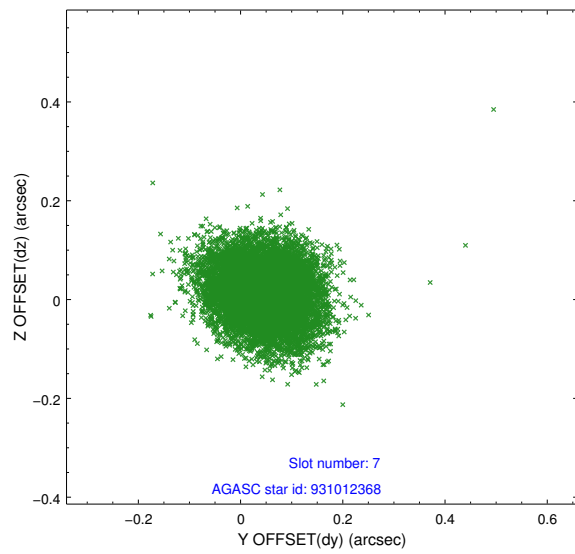
2.4.3 Slot 5



2.4.4 Slot 6

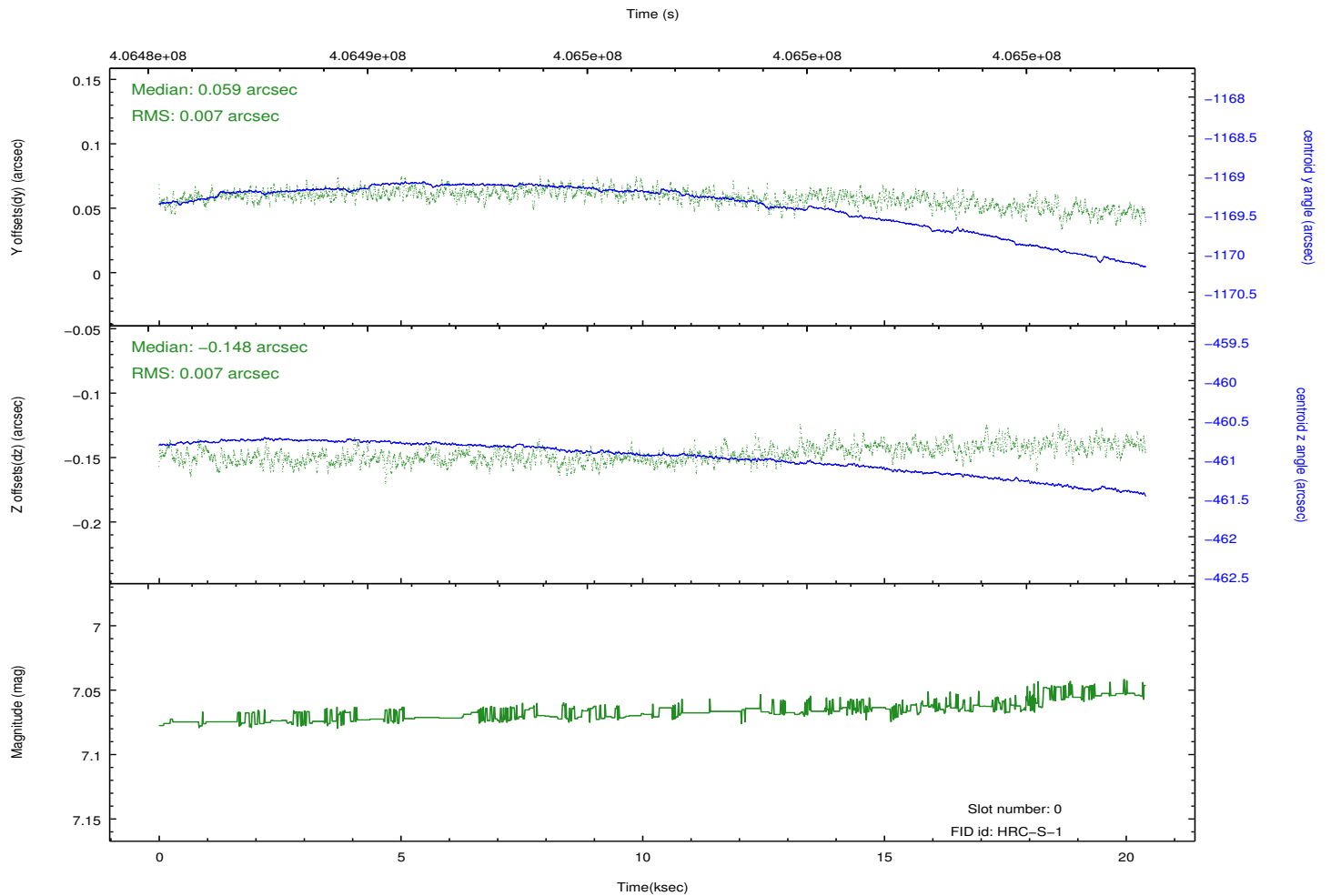
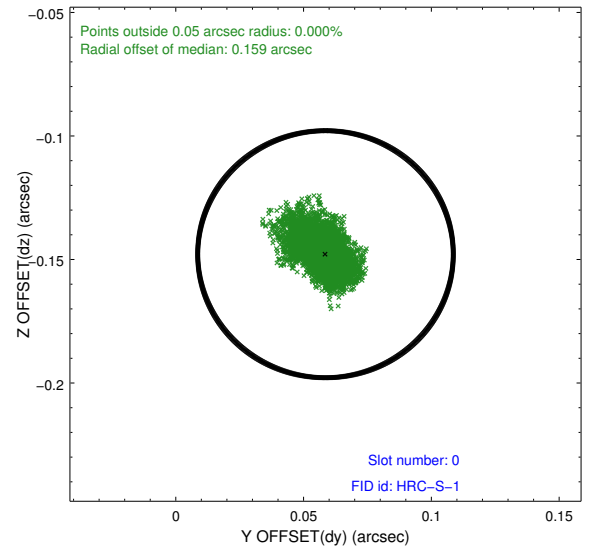
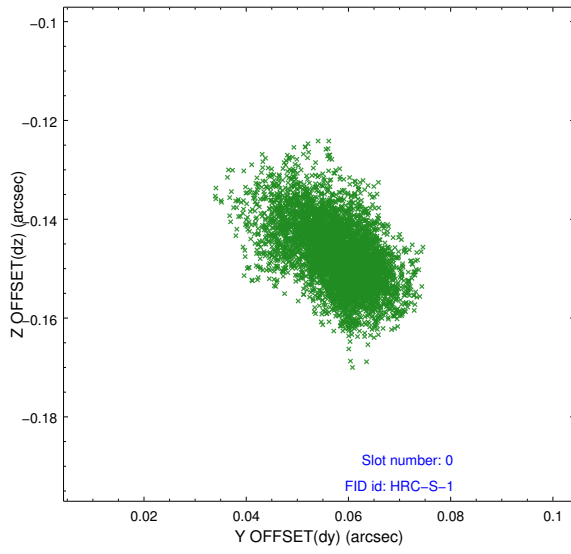


2.4.5 Slot 7

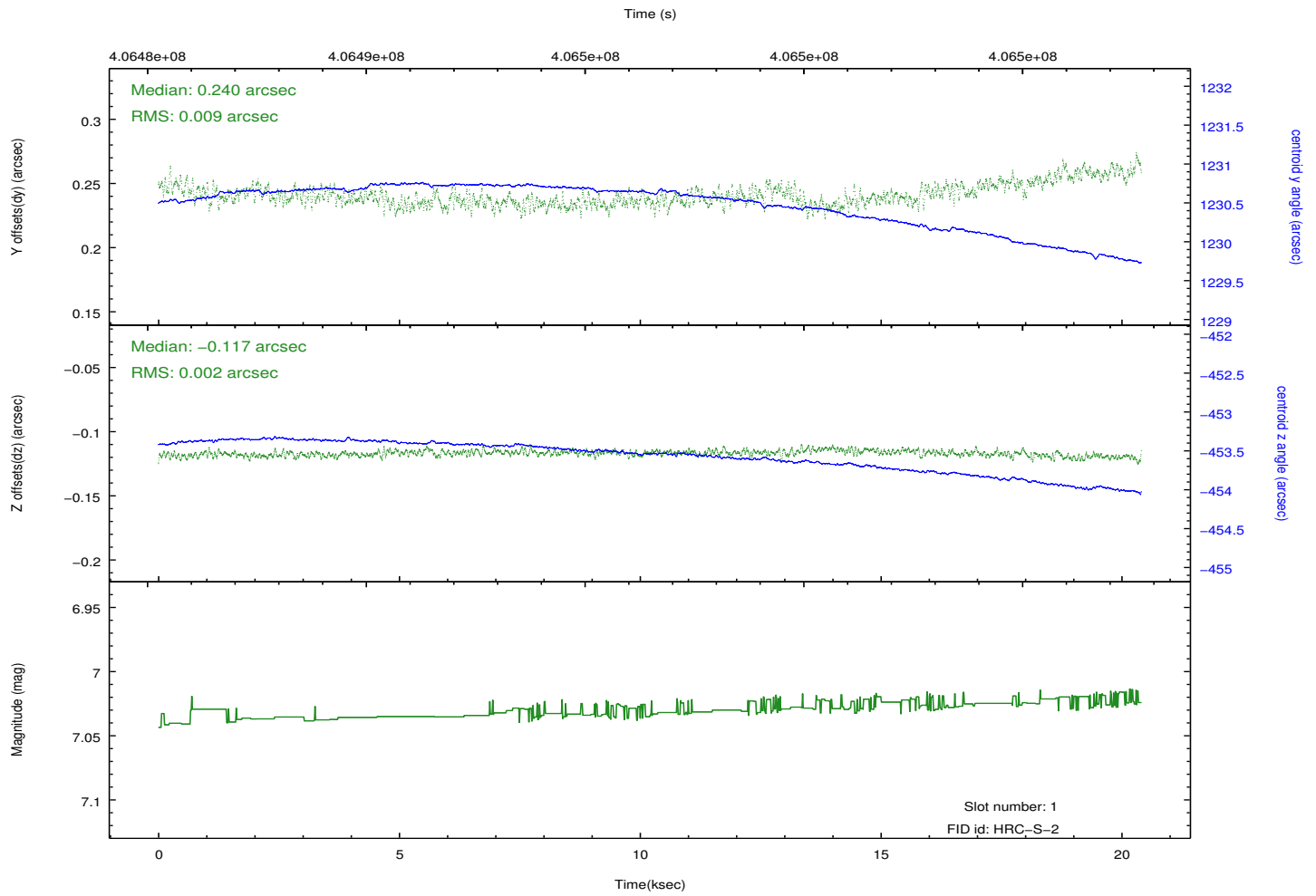
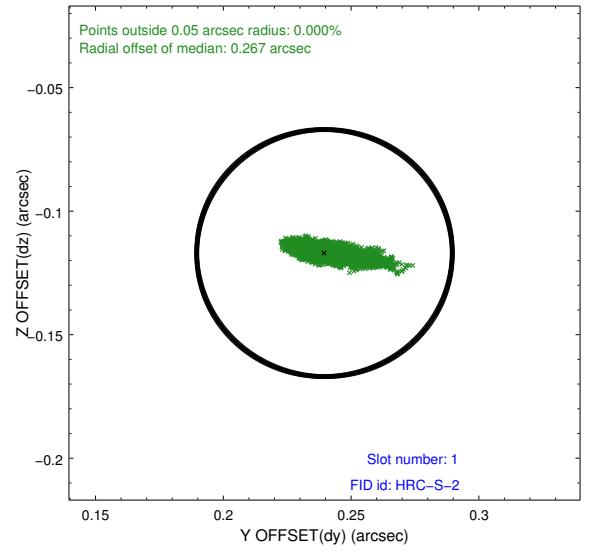
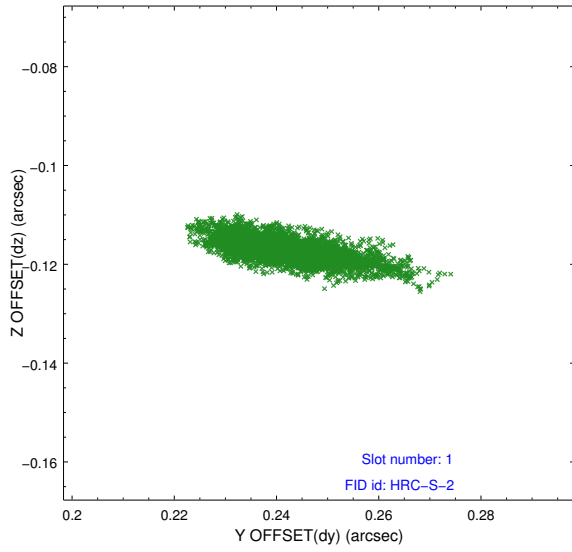


2.5 FID Slots

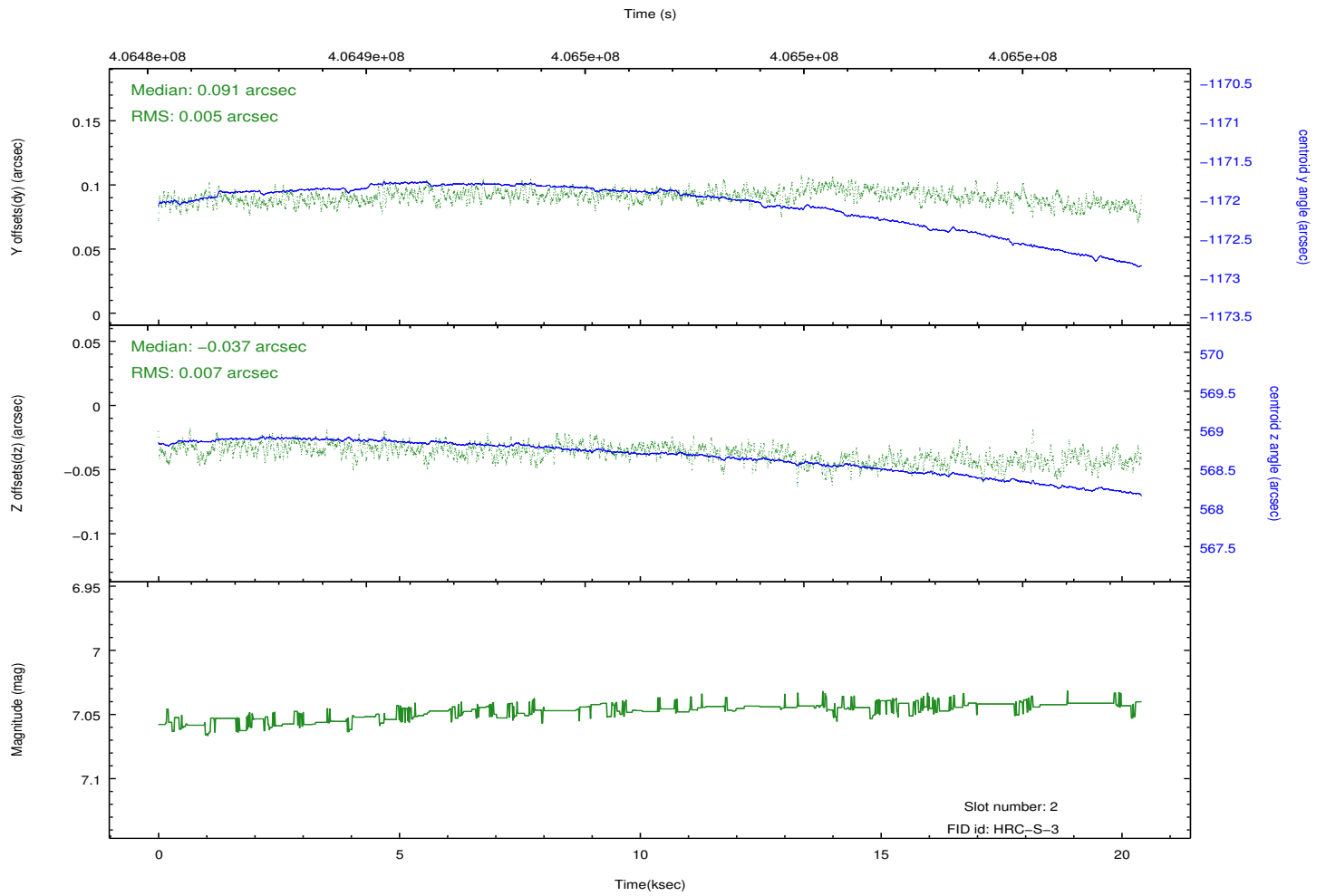
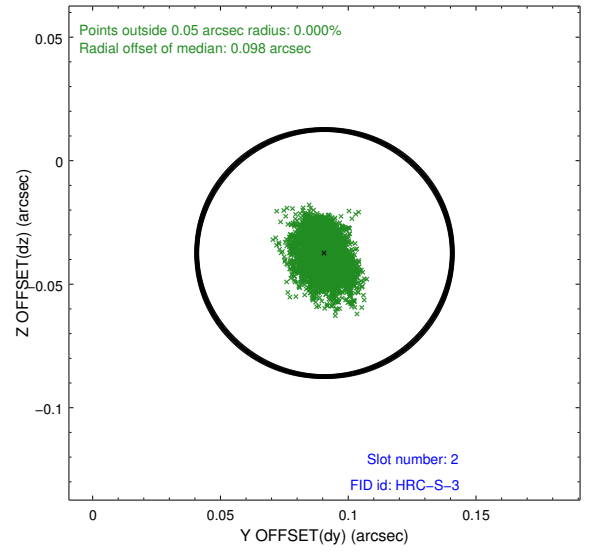
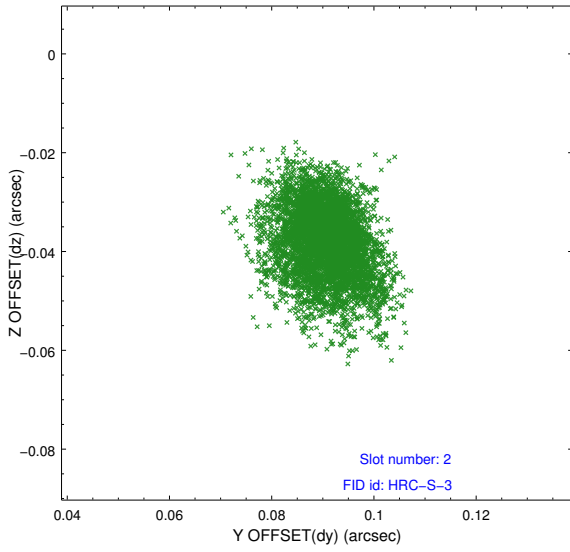
2.5.1 Slot 0



2.5.2 Slot 1

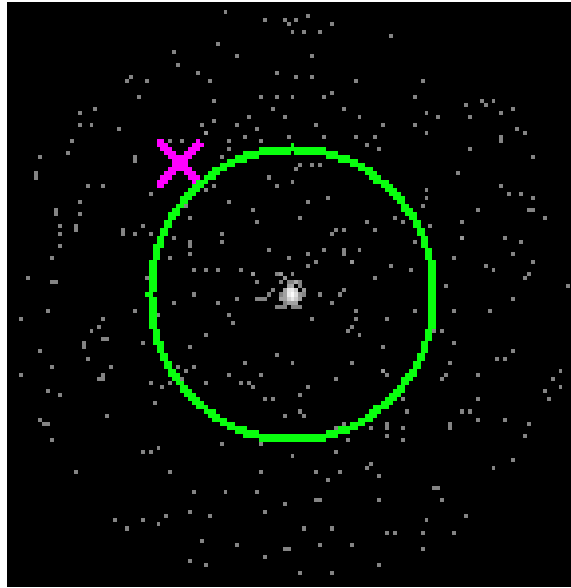


2.5.3 Slot 2



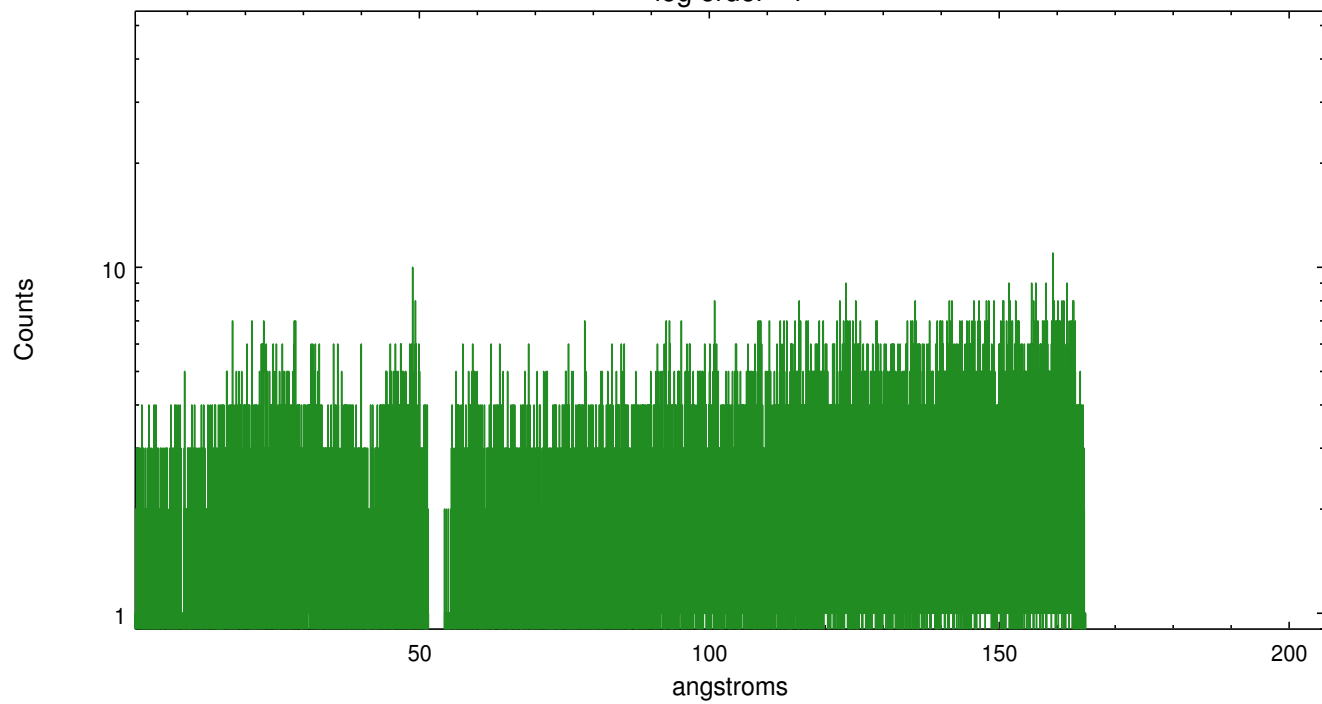
3 Gratings

3.1 LETG Arm

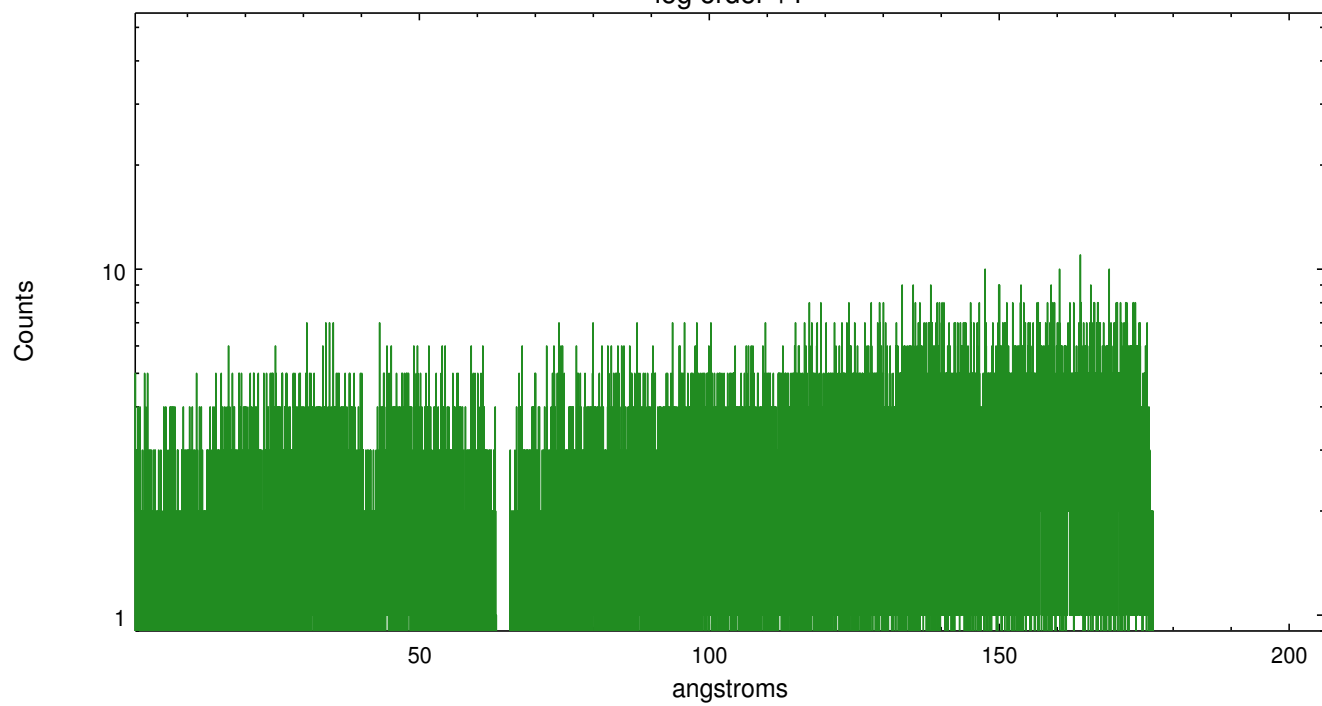


LETG Zero Order

leg order -1



leg order +1



A Summary

A.1 Status

| | |
|----------------------------|-----------------|
| V&V Scientist | Joy Nichols |
| V&V Date (YYYY-MM-DD) | 2012.07.19 |
| V&V Edition | 1 |
| V&V Disposition and Status | OK |
| V&V Charge Time | 19.979301033854 |

A.2 Comments