

V&V Reference Report

L2 ASCDS Version : 8.4.3

Observation 13791 - L2 Version 1
Chandra X-Ray Center

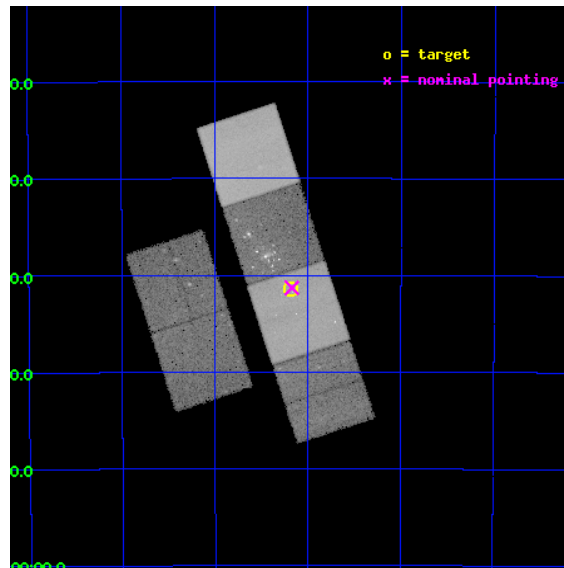
L2 Processing Date : Jan 11 2012

Contents

1	Front	2
2	OBI	3
2.1	OBI	3
2.1.1	Images	3
2.1.2	Bias	3
2.1.3	Parameters	4
2.1.4	Events	4
2.2	Compared Parameters	5
2.3	Aspect	6
2.4	Star Slots	9
2.4.1	Slot 3	9
2.4.2	Slot 4	10
2.4.3	Slot 5	11
2.4.4	Slot 6	12
2.4.5	Slot 7	13
2.5	FID Slots	14
2.5.1	Slot 0	14
2.5.2	Slot 1	15
2.5.3	Slot 2	16
A	Summary	17
A.1	Status	17
A.2	Comments	17

1 Front

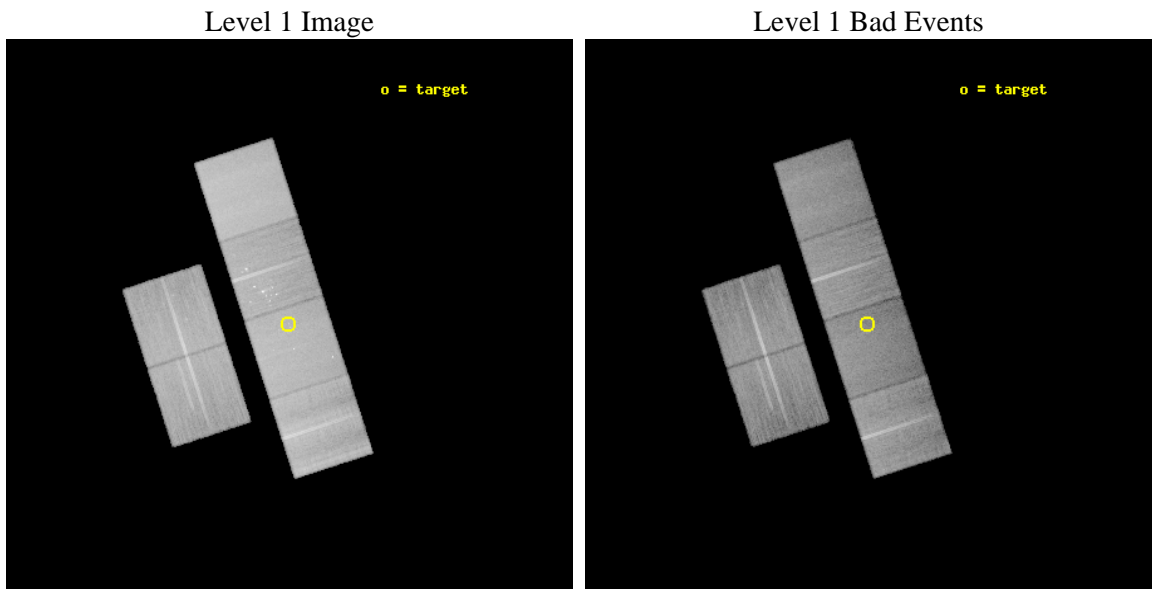
seq_num	501623	Sequence number
obs_id	13791	Observation id
title	X-ray and Radio emission from type IIP supernovae	Proposal title
observer	Prof. Alak Ray	Principal investigator
object	SN2011ja	Source name
dtycycle	0	
cycle	P	events from which exps? Prim/Second/Both
ra_targ	196.296208	Observer's specified target RA [deg]
dec_targ	-49.524194	Observer's specified target Dec [deg]
ra_nom	196.29325406199	Nominal RA [deg]
dec_nom	-49.521860977005	Nominal Dec [deg]
roll_nom	72.088514520703	Nominal Roll [deg]
revision	1	Processing version of data
ontime	39960.790748954	Sum of GTIs [s]
livetime	39454.783154991	Livetime [s]
ontime2	39957.59080869	Sum of GTIs [s]
ontime3	39960.667628944	Sum of GTIs [s]
ontime5	39960.749708951	Sum of GTIs [s]
ontime6	39960.708668947	Sum of GTIs [s]
ontime7	39960.790748954	Sum of GTIs [s]
ontime8	39954.144598365	Sum of GTIs [s]
l2events	442065	Number of level 2 events



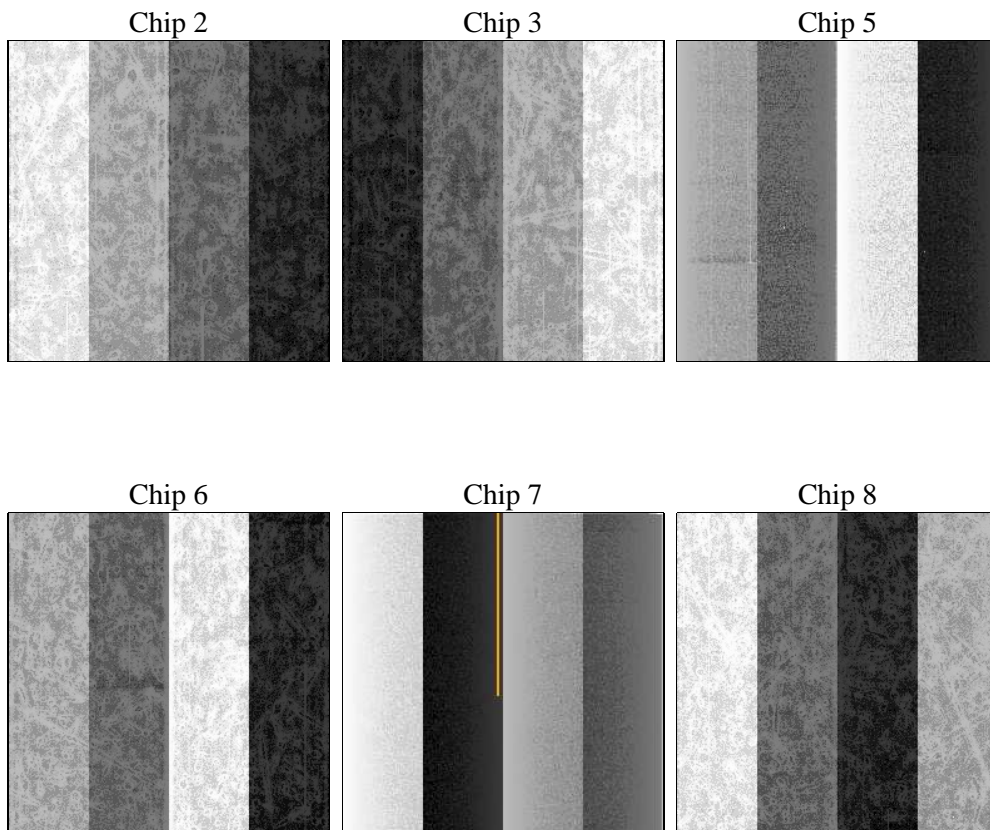
2 OBI

2.1 OBI

2.1.1 Images



2.1.2 Bias



2.1.3 Parameters

obi_num	0	Obi number	sched_exp_time	40000.000000	[s] Scheduled observation exposure time
ascdsver	8.4.3	Processing system revision	ontime	39960.790748954	Sum of GTIs [s]
caldbver	4.4.7	 	ontime2	39957.59080869	Sum of GTIs [s]
date	2012-01-11T22:56:41	Date and time of file creation	ontime3	39960.667628944	Sum of GTIs [s]
revision	1	Processing version of data	ontime5	39960.749708951	Sum of GTIs [s]
			ontime6	39960.708668947	Sum of GTIs [s]
			ontime7	39960.790748954	Sum of GTIs [s]
			ontime8	39954.144598365	Sum of GTIs [s]
			l1events	1834133	Number of level 1 events

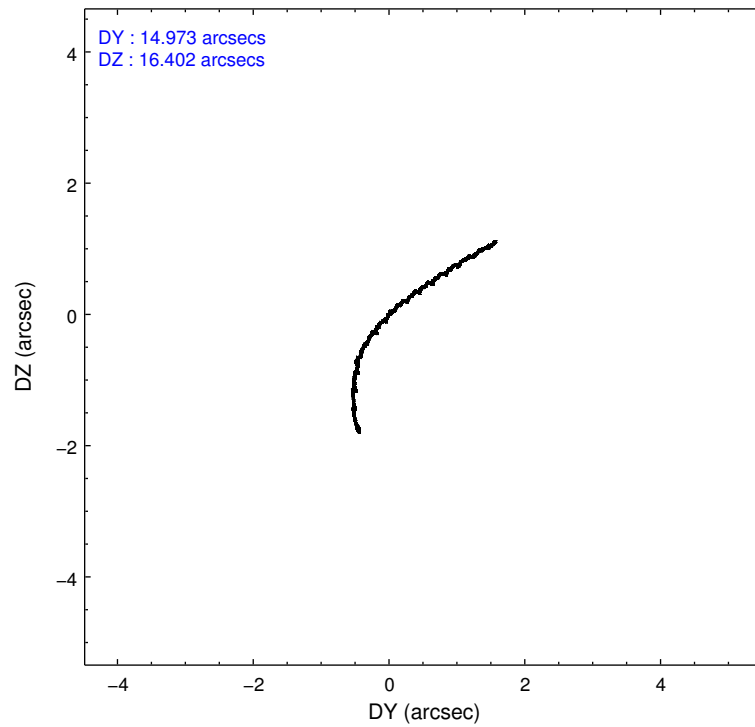
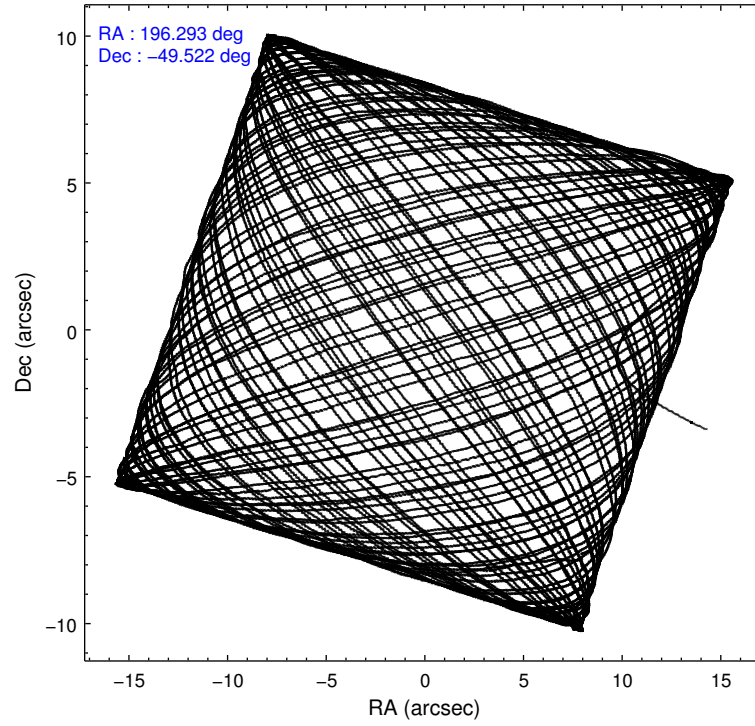
2.1.4 Events

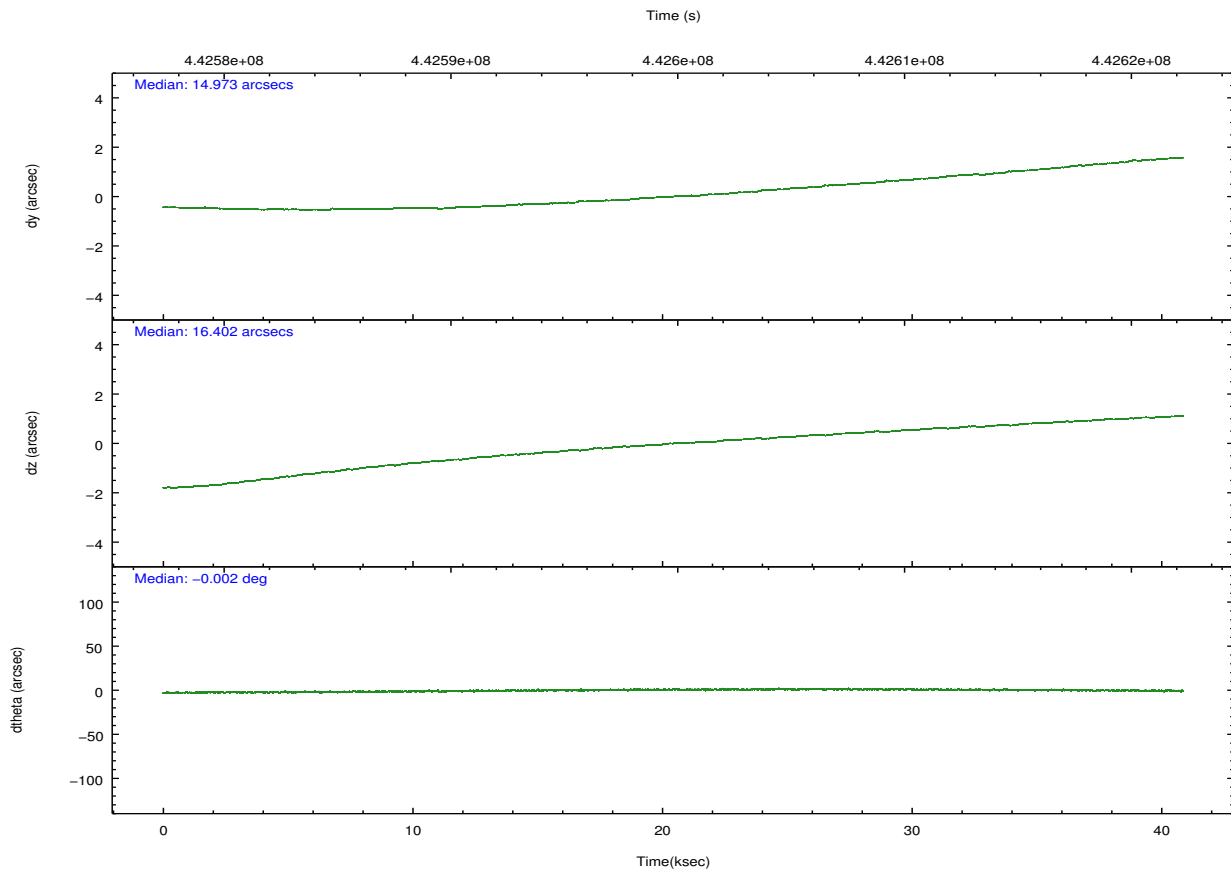
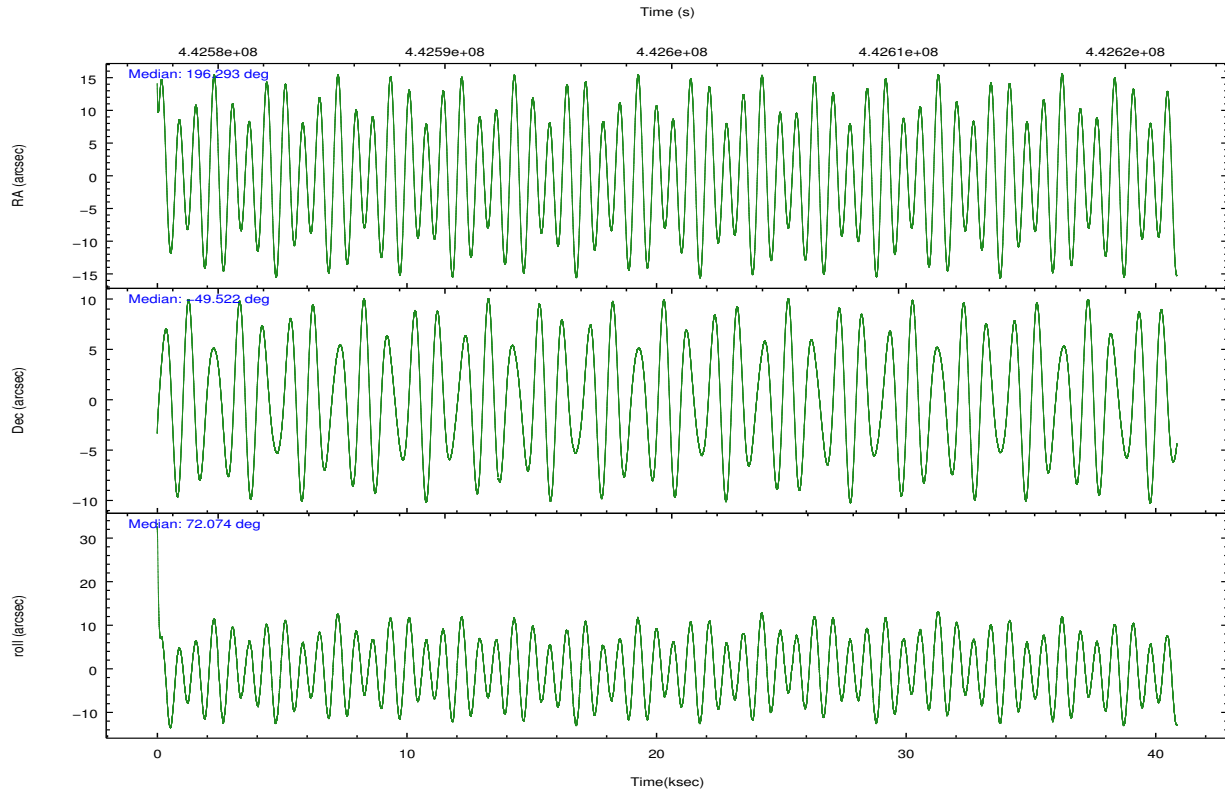
	ccd 2	ccd 3	ccd 5	ccd 6	ccd 7	ccd 8		ccd 2	ccd 3	ccd 5	ccd 6	ccd 7	ccd 8
level 1 events	262969	242907	391555	273444	330218	333040	grade 0 events	10434	9240	11283	18449	13818	26567
rejected events	233768	216476	203580	233100	182269	243932		3%	3%	2%	6%	4%	7%
rejected %	88%	89%	51%	85%	55%	73%	grade 1 events	146	154	605	190	366	274
								0%	0%	0%	0%	0%	0%
							grade 2 events	7097	5870	57918	8056	30174	20624
								2%	2%	14%	2%	9%	6%
							grade 3 events	3001	2887	7247	3388	12721	9552
								1%	1%	1%	1%	3%	2%
							grade 4 events	2914	2930	7014	3411	13101	8791
								1%	1%	1%	1%	3%	2%
							grade 5 events	11145	12164	30010	12373	33704	17861
								4%	5%	7%	4%	10%	5%
							grade 6 events	5757	5505	104532	7046	78142	23578
								2%	2%	26%	2%	23%	7%
							grade 7 events	222475	204157	172946	220531	148192	225793
								84%	84%	44%	80%	44%	67%

2.2 Compared Parameters

Parameter	Planned	Actual	Parameter	Planned	Actual
Instrument	ACIS	ACIS	Obspar format version number	7	7
Detector	ACIS-235678	ACIS-235678	Obspar file type	PREDICTED	ACTUAL
Grating	NONE	NONE	Obspar update status	NONE	UPDATED
Data mode	VFAINT	VFAINT	CCD I0 on	N	N
Observation mode	POINTING	POINTING	CCD I1 on	N	N
[deg] Pointing RA	196.302625	196.2932540619913	CCD I2 on	Y	Y
[deg] Pointing Dec	-49.548516	-49.52186097700491	CCD I3 on	O1	Y
[deg] Pointing Roll	71.939005	72.08851452070303	CCD S0 on	N	N
[mm] SIM focus pos	-0.684267	-0.6828225247311905	CCD S1 on	Y	Y
[mm] SIM defocus	0	0.001444936568705701	CCD S2 on	Y	Y
[mm] SIM translation stage pos	-190.132523	-190.1400660498719	CCD S3 on	Y	Y
[mm] SIM translation stage offset	0	0.00754346686406393	CCD S4 on	Y	Y
[s] Observation start time (MET)	442580209.184000	442578352.6014	CCD S5 on	N	N
Observation start date	2012-01-10T10:55:43	2012-01-10T10:25:52	Number of optional ACIS chips dropped	0	0
[s] Observation end time (MET)	442620209.184000	442620798.36614	On-chip summing requested	N	N
Observation end date	2012-01-10T22:02:23	2012-01-10T22:13:18	Subarray requested	NONE	NONE
Read mode	TIMED	TIMED	Alternating exposures requested	N	N
			[s] Primary exposure time	0.000000	3.2

2.3 Aspect



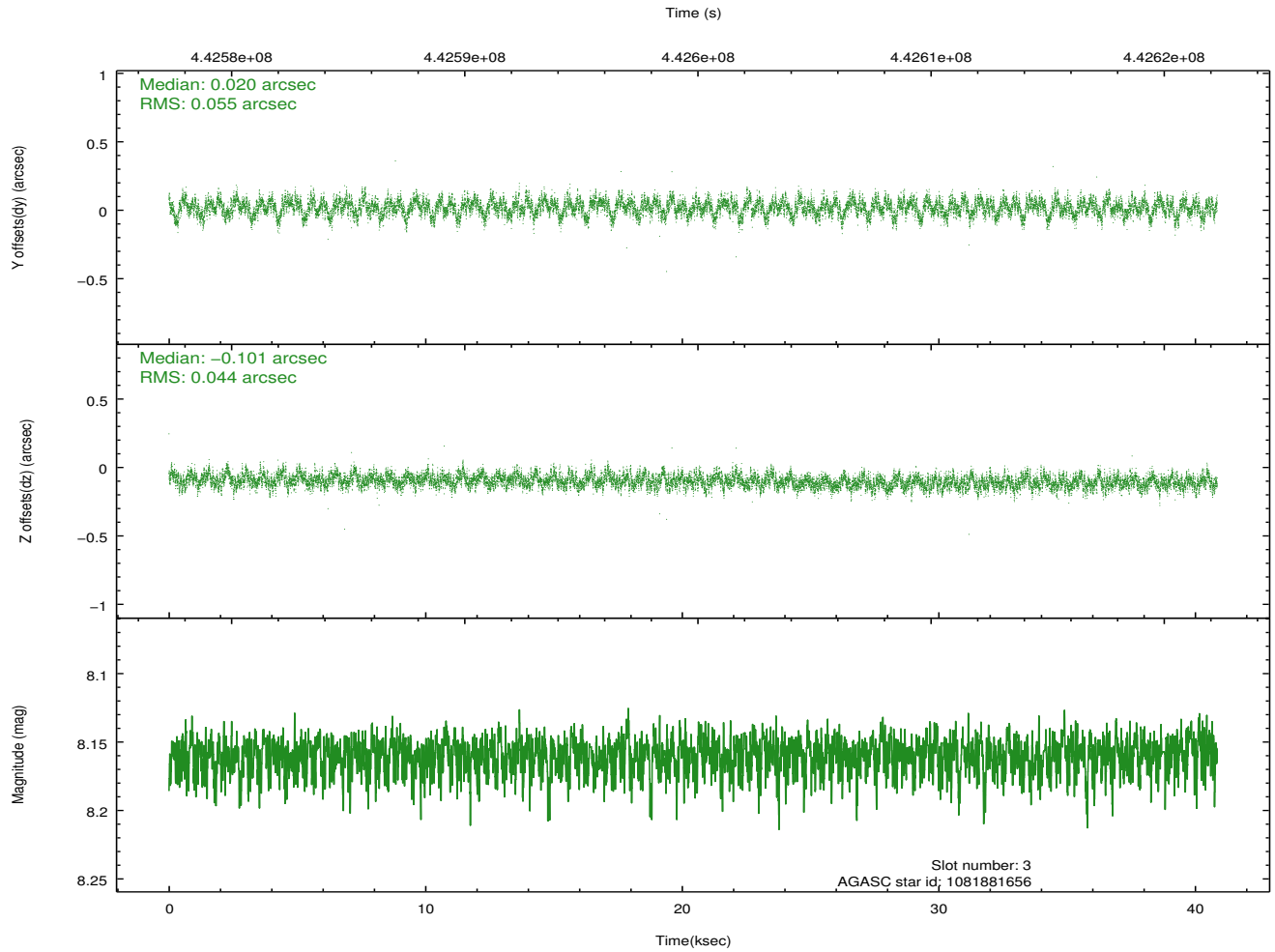
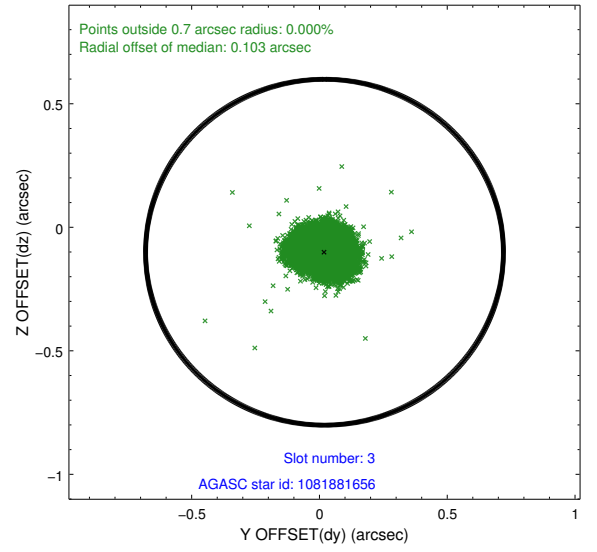
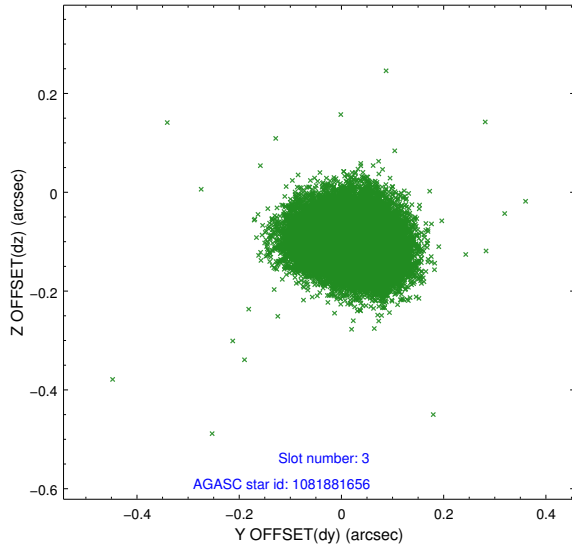


Slot Statistics

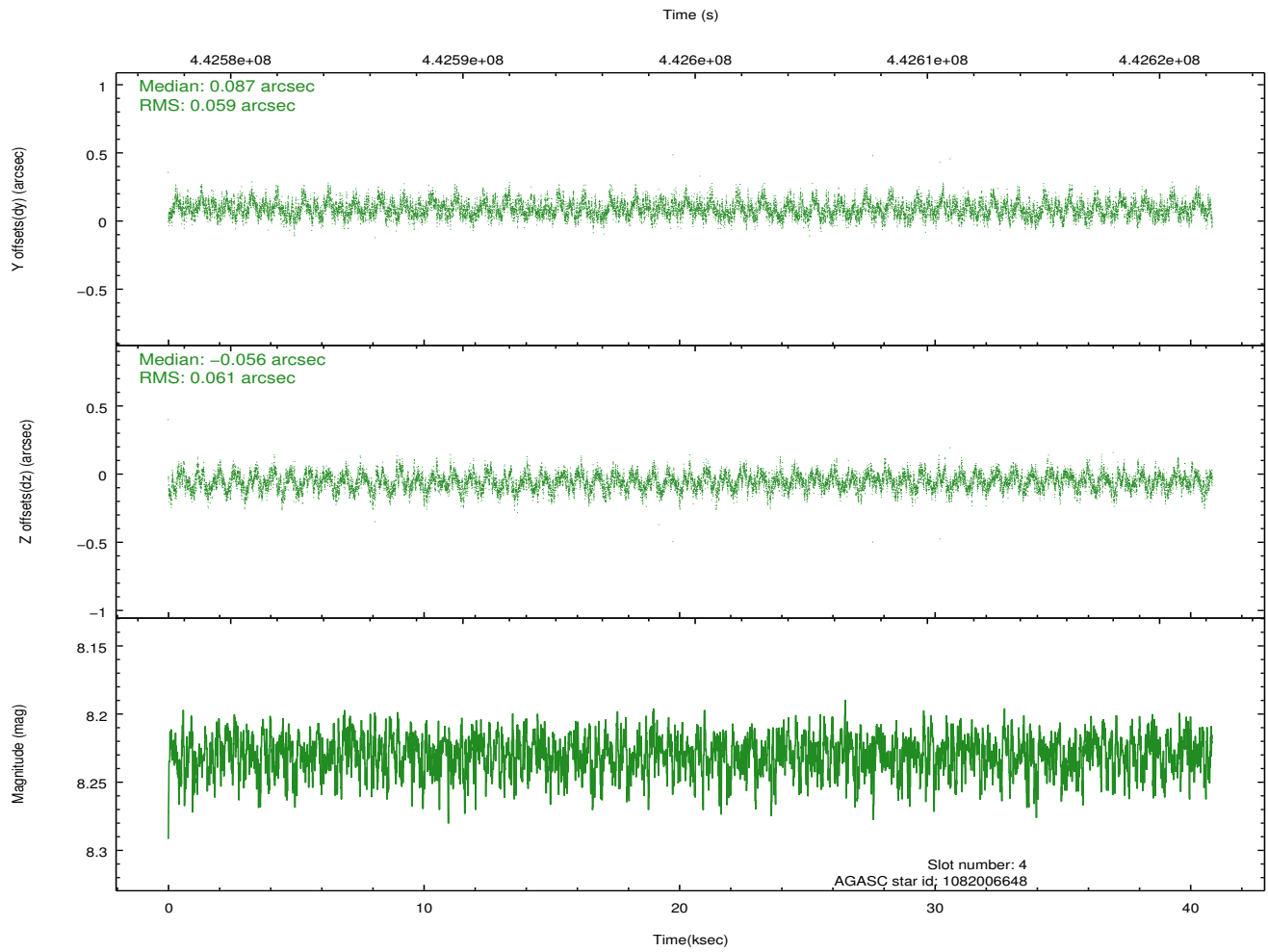
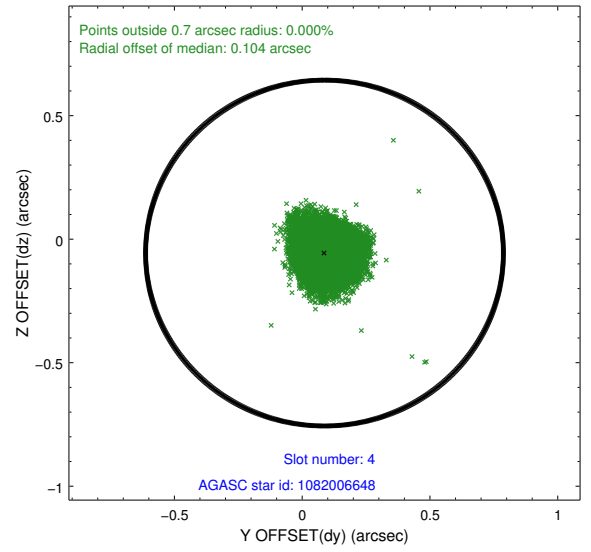
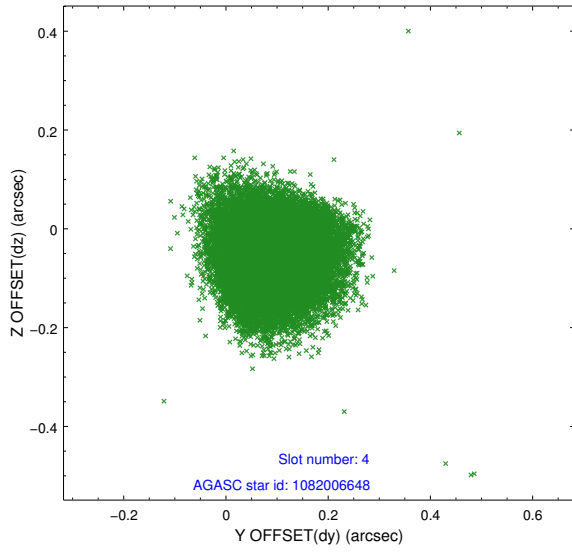
slot	status	id	mag	n_pts	med_dy	med_dz	dr1	dr2	ra	dec	mean_y	mean_z
0	FID	ACIS-S-2	6.94	9966	-0.131	-0.084	0.012	0.023	0.000000	0.000000	-768.33	-1737.73
1	FID	ACIS-S-4	7.02	9966	0.167	0.060	0.013	0.021	0.000000	0.000000	2145.31	170.78
2	FID	ACIS-S-6	7.16	9964	-0.065	0.031	0.009	0.014	0.000000	0.000000	393.83	808.22
3	GUIDE	1081881656	8.16	19925	0.020	-0.101	0.075	0.119	196.213950	-49.649201	-408.52	84.07
4	GUIDE	1082006648	8.23	19921	0.087	-0.056	0.091	0.143	197.274351	-49.494968	874.44	-2104.14
5	GUIDE	1082008112	8.40	19908	-0.169	0.037	0.074	0.117	197.377739	-49.248431	1793.98	-2072.12
6	GUIDE	1082011856	8.17	19929	-0.175	0.015	0.065	0.104	197.058878	-49.171293	1834.99	-1273.48
7	GUIDE	1082011656	8.73	19921	0.235	0.103	0.096	0.149	196.918669	-50.351021	-2313.91	-2240.93

2.4 Star Slots

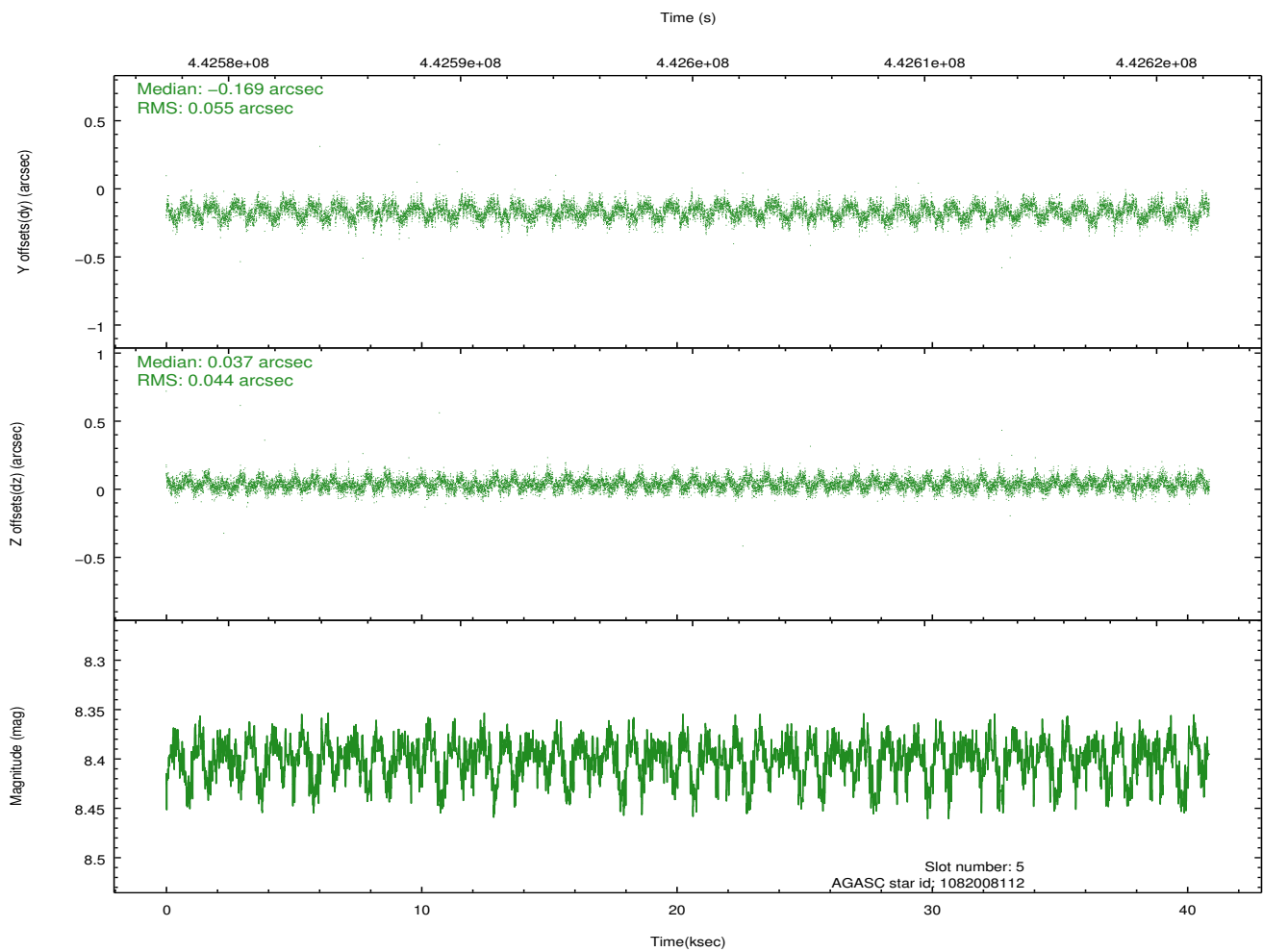
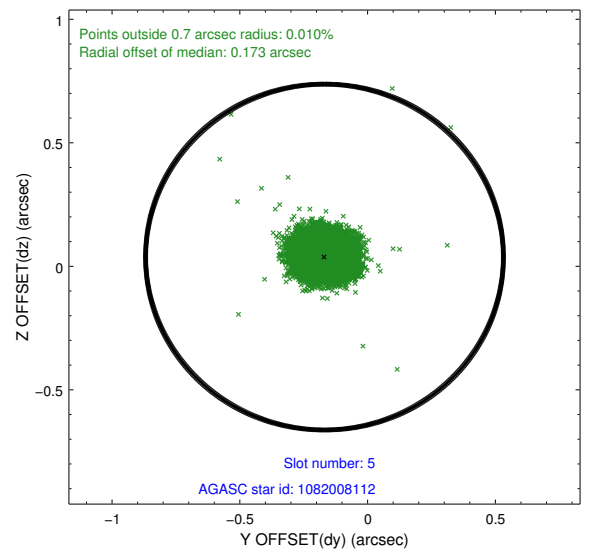
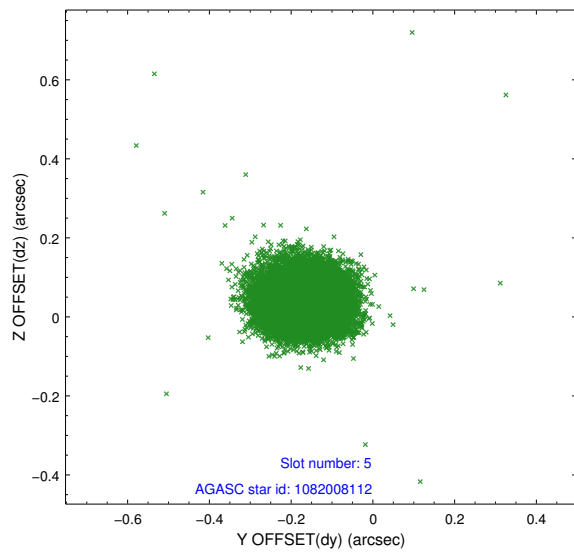
2.4.1 Slot 3



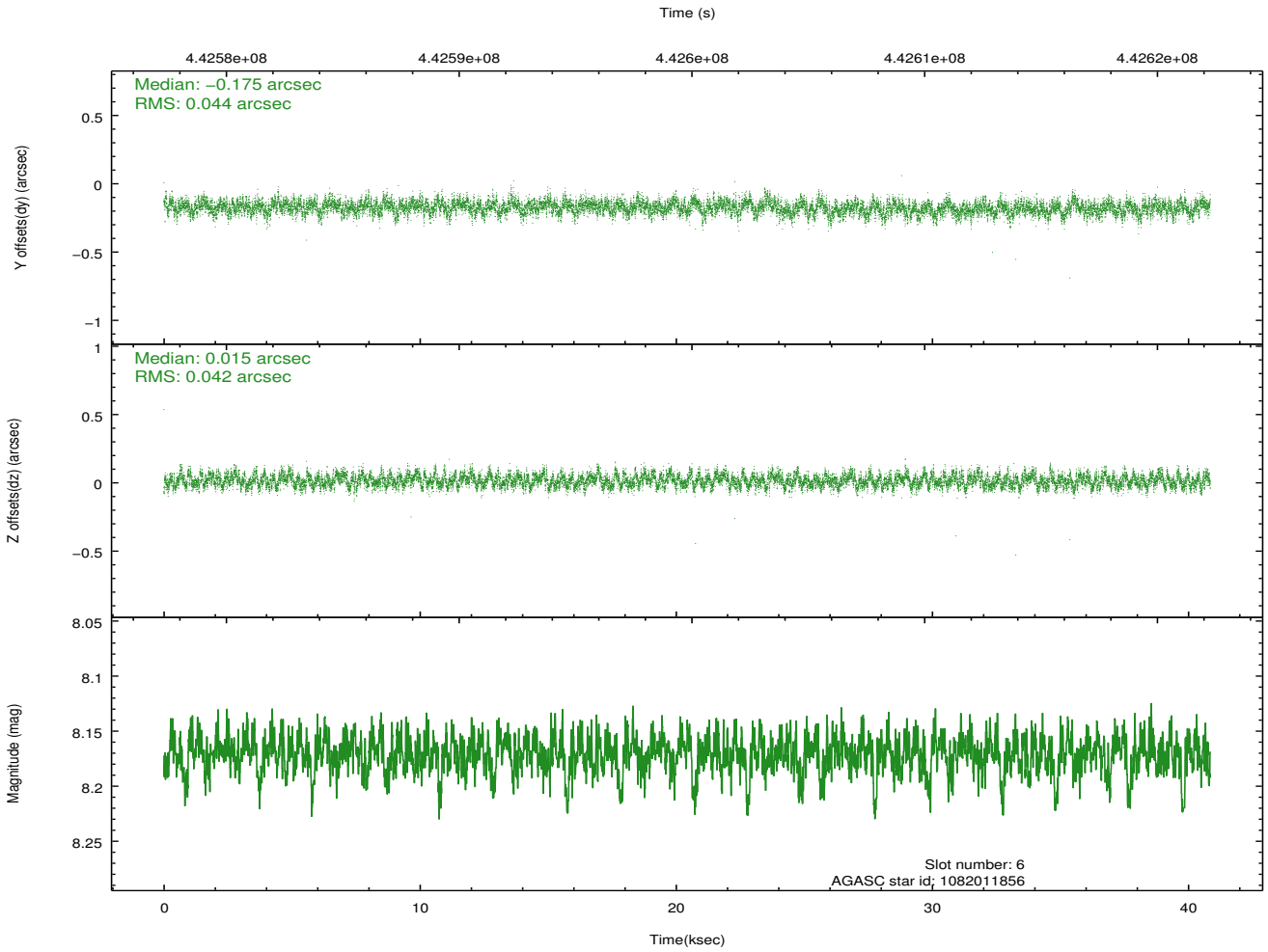
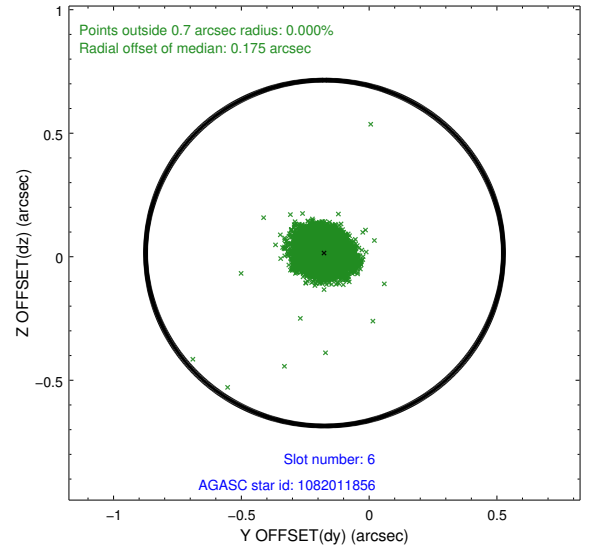
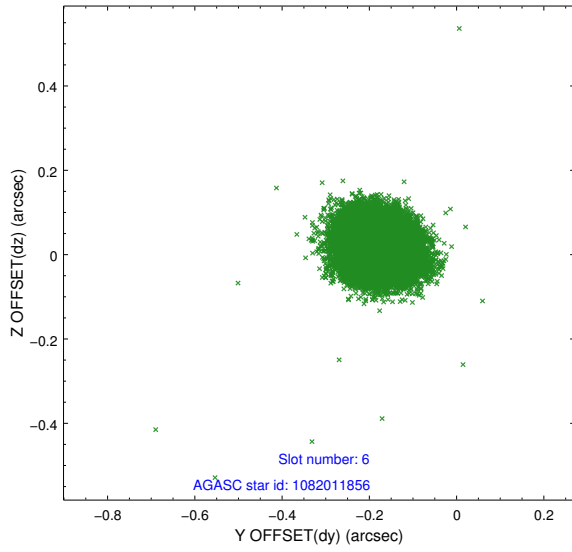
2.4.2 Slot 4



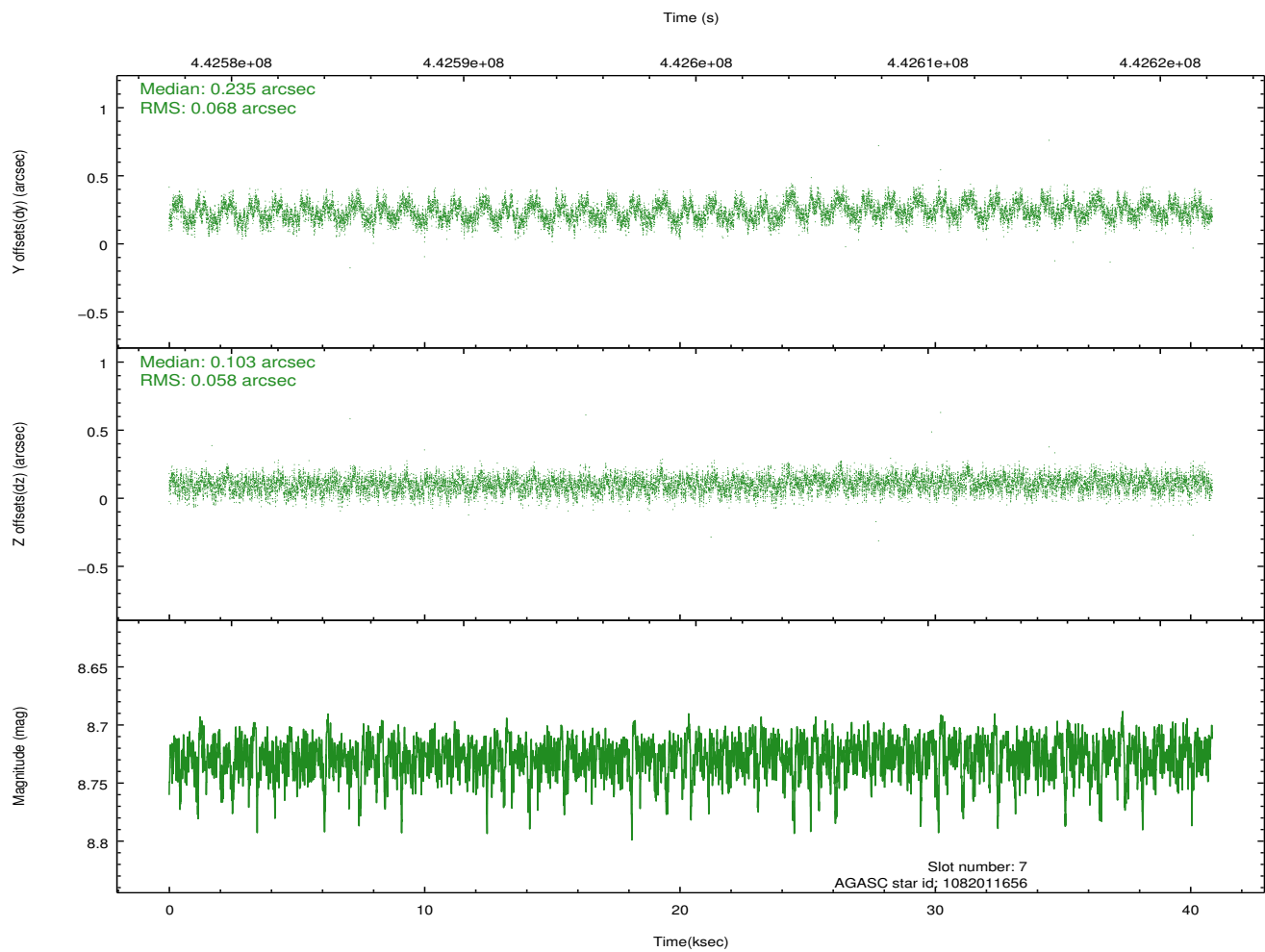
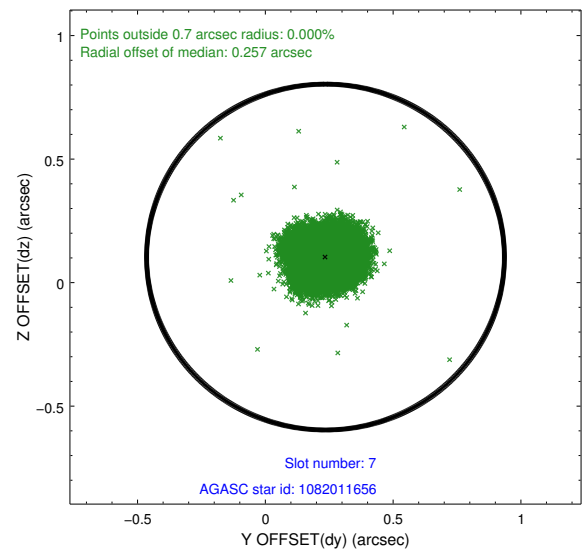
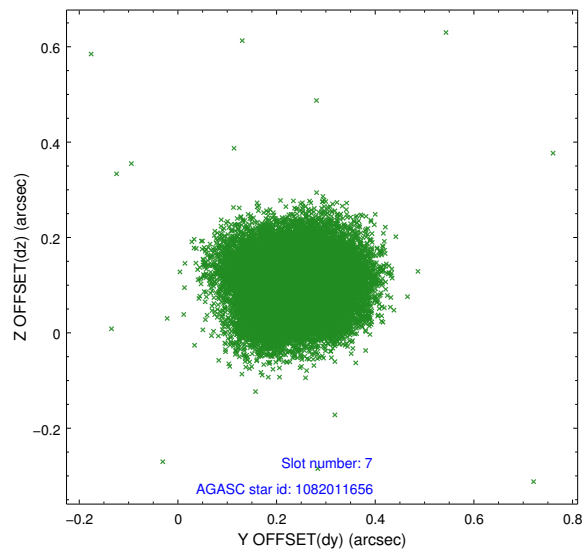
2.4.3 Slot 5



2.4.4 Slot 6

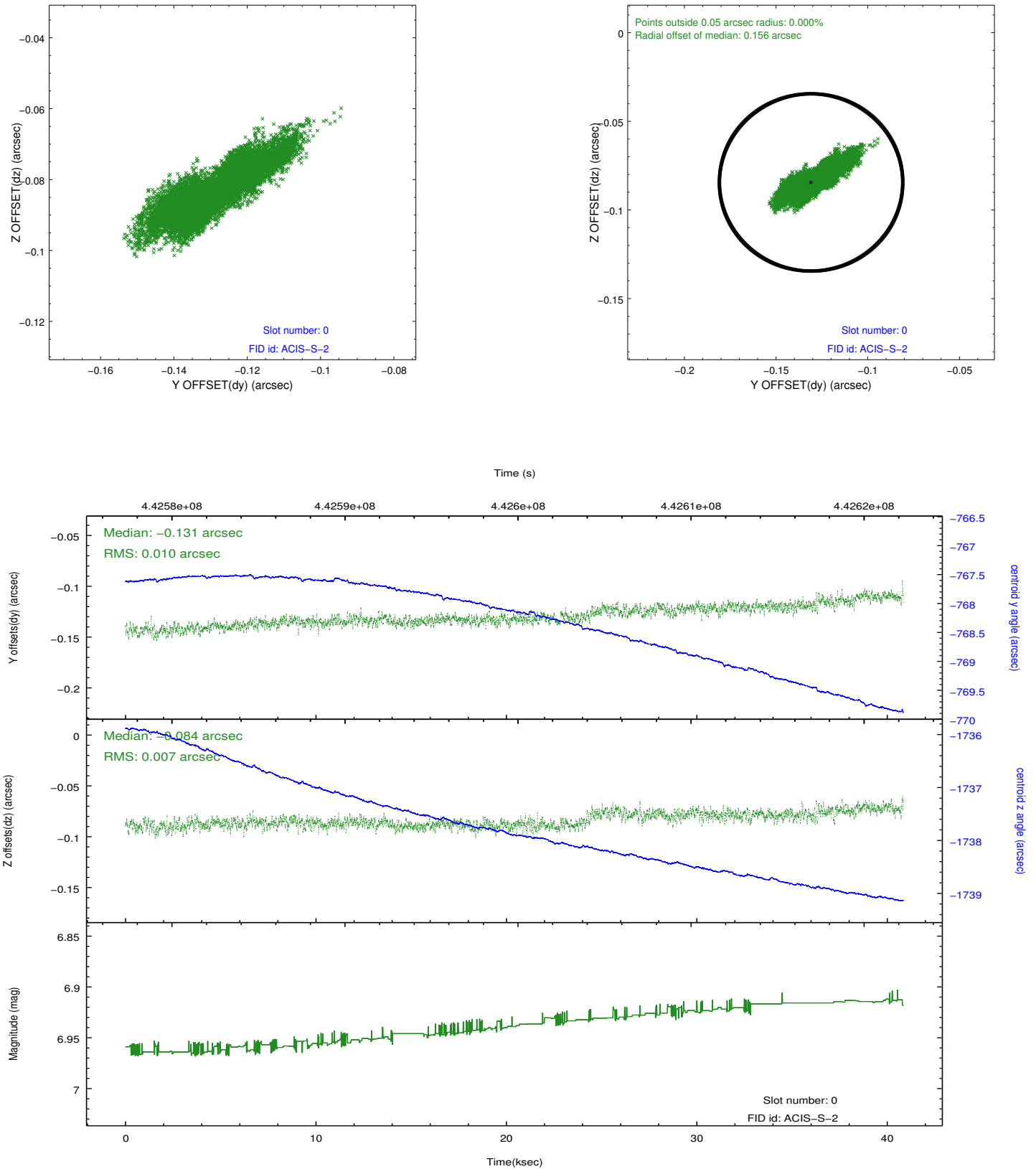


2.4.5 Slot 7

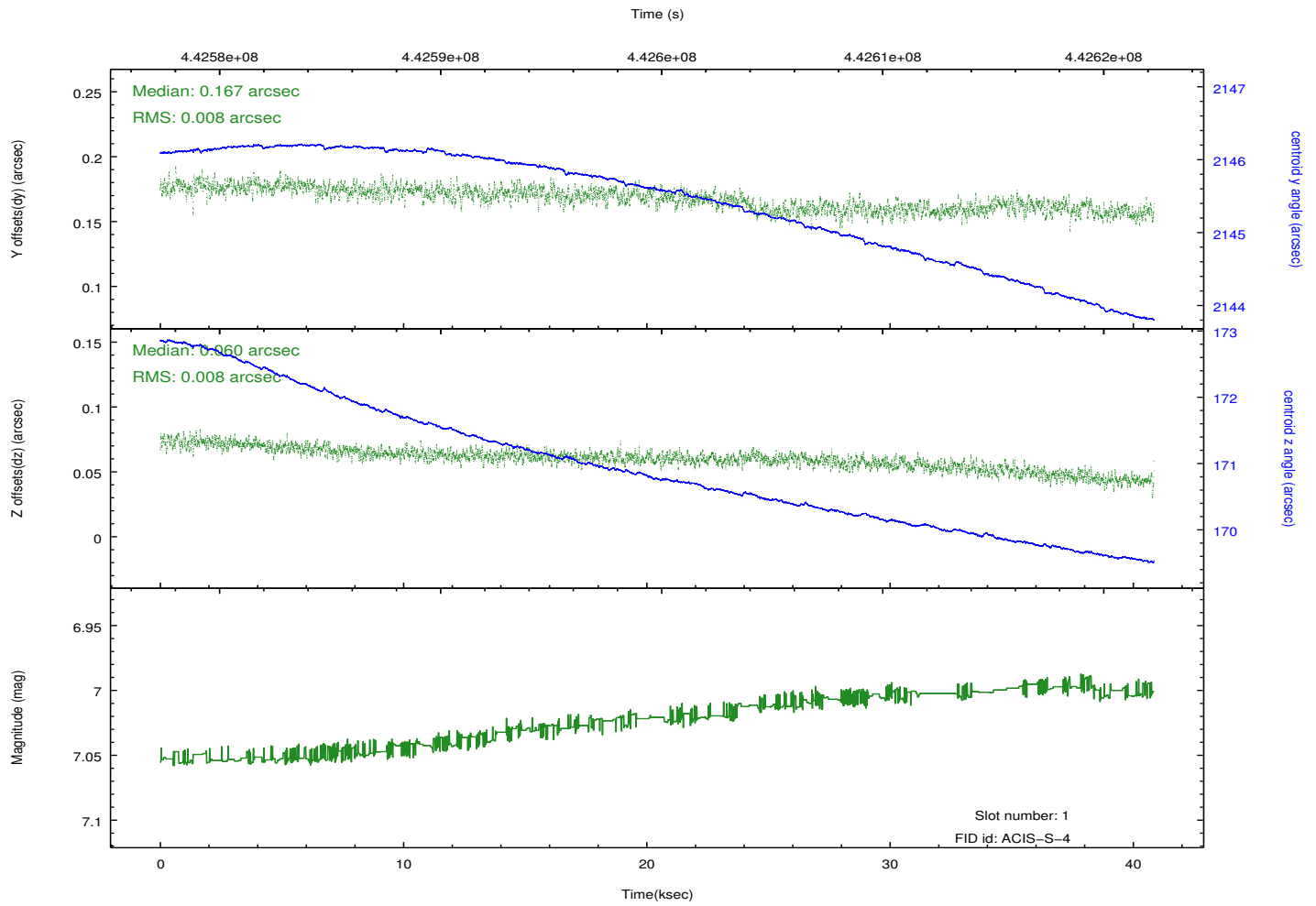
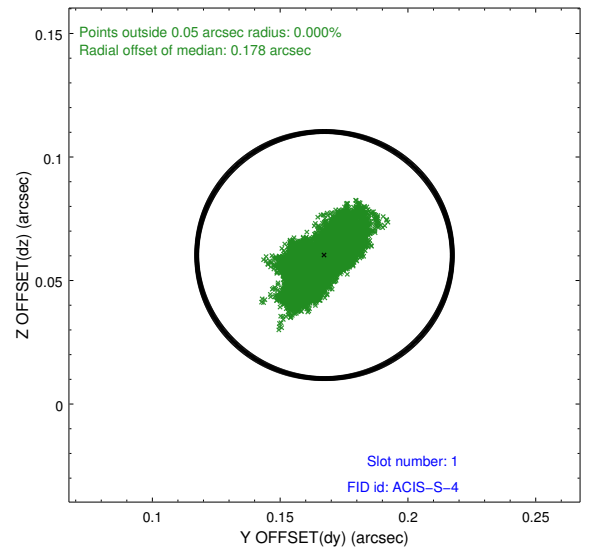
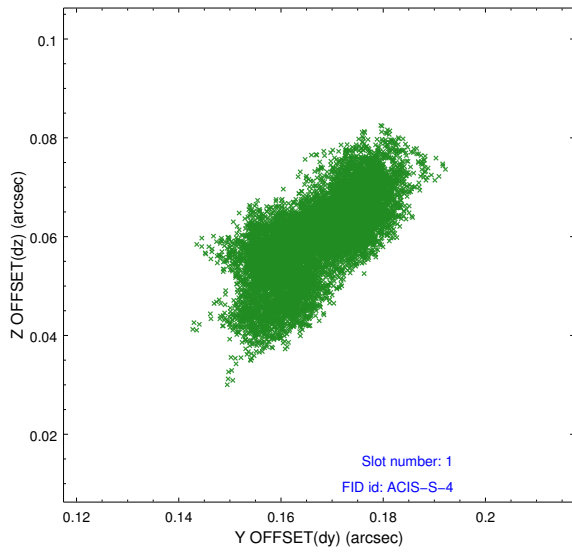


2.5 FID Slots

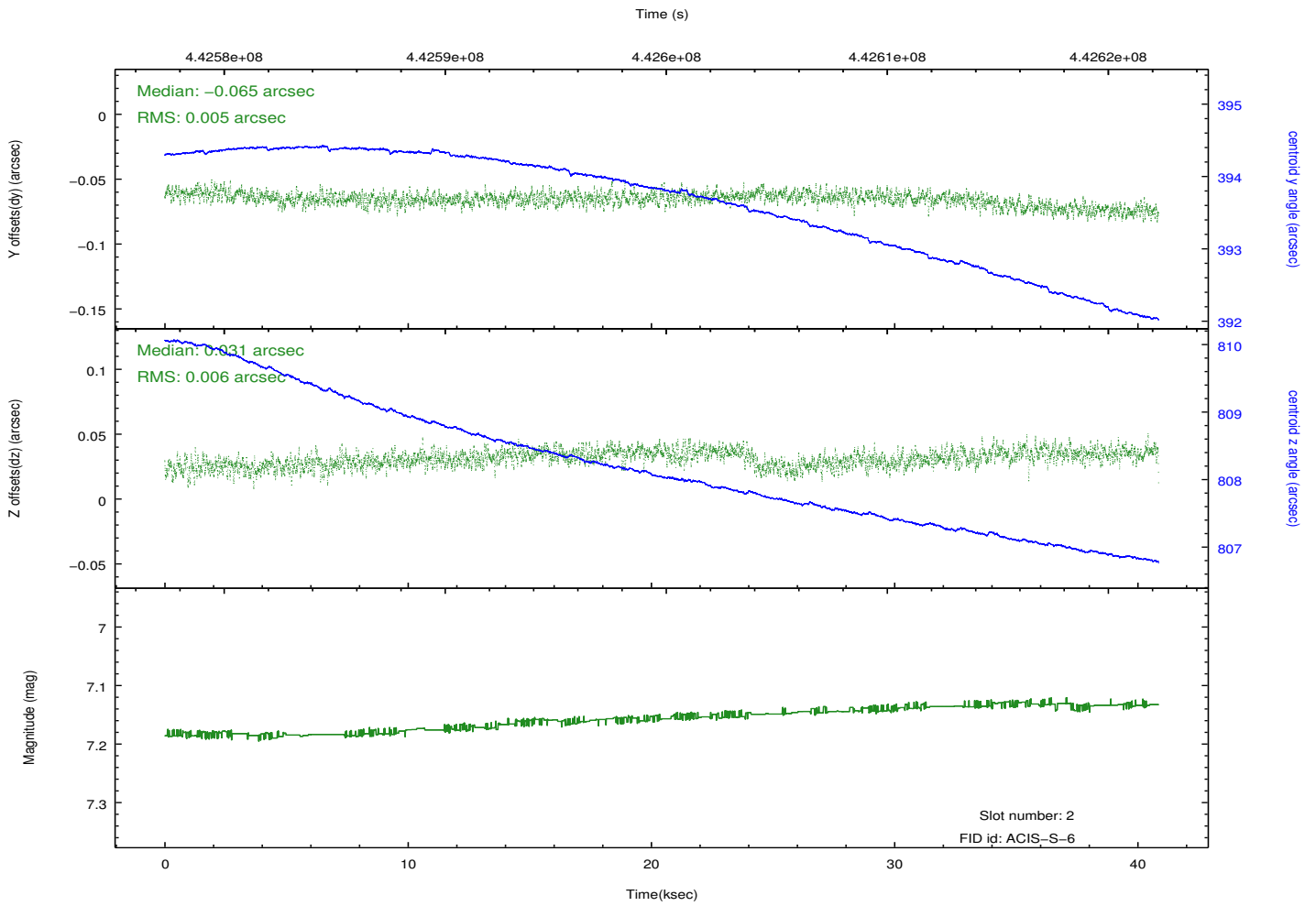
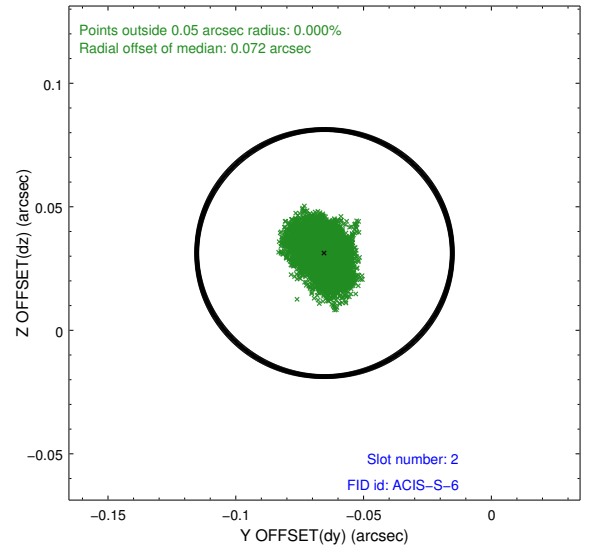
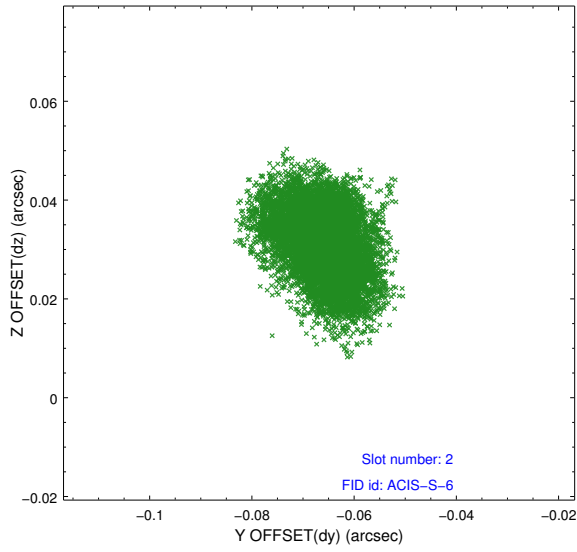
2.5.1 Slot 0



2.5.2 Slot 1



2.5.3 Slot 2



A Summary

A.1 Status

V&V Scientist	Jen Lauer
V&V Date (YYYY-MM-DD)	2012.01.12
V&V Edition	1
V&V Disposition and Status	OK
V&V Charge Time	39.960790748954

A.2 Comments

Joint Proposal: NRAO