

V&V Reference Report

L2 ASCDS Version : 8.4.3

Observation 14021 - L2 Version 2
Chandra X-Ray Center

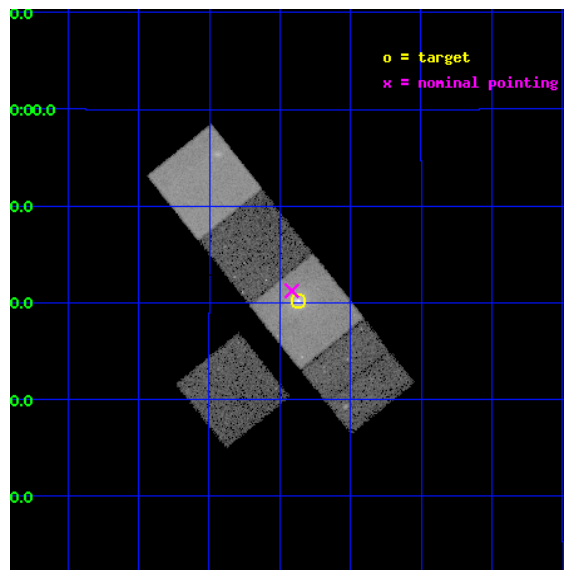
L2 Processing Date : Feb 27 2012

Contents

1	Front	2
2	OBI	3
2.1	OBI	3
2.1.1	Images	3
2.1.2	Bias	3
2.1.3	Parameters	4
2.1.4	Events	4
2.2	Compared Parameters	5
2.3	Aspect	6
2.4	Star Slots	9
2.4.1	Slot 3	9
2.4.2	Slot 4	10
2.4.3	Slot 5	11
2.4.4	Slot 6	12
2.4.5	Slot 7	13
2.5	FID Slots	14
2.5.1	Slot 0	14
2.5.2	Slot 1	15
2.5.3	Slot 2	16
A	Summary	17
A.1	Status	17
A.2	Comments	17

1 Front

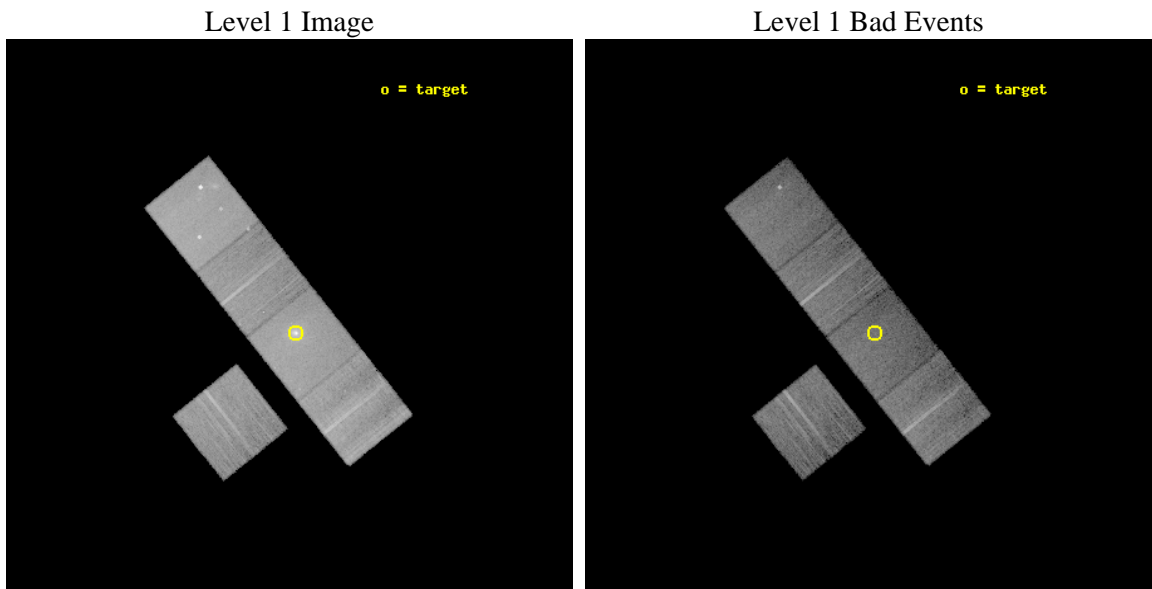
seq_num	801199	Sequence number
obs_id	14021	Observation id
title	The most overlooked strong cool core cluster - RXCJ1350.3+0940	Pro
observer	Dr ALASTAIR EDGE	Principal investigator
object	RXCJ1350.3+0940	Source name
dtcycle	0	
cycle	P	events from which exps? Prim/Second/Both
ra_targ	207.5925	Observer's specified target RA [deg]
dec_targ	9.669667	Observer's specified target Dec [deg]
ra_nom	207.60366750593	Nominal RA [deg]
dec_nom	9.6874532110406	Nominal Dec [deg]
roll_nom	51.37789353751	Nominal Roll [deg]
revision	2	Processing version of data
ontime	20041.500154138	Sum of GTIs [s]
livetime	19779.643200286	Livetime [s]
ontime3	20041.500154138	Sum of GTIs [s]
ontime5	20041.500154138	Sum of GTIs [s]
ontime6	20041.500154138	Sum of GTIs [s]
ontime7	20041.500154138	Sum of GTIs [s]
ontime8	20041.500154138	Sum of GTIs [s]
l2events	220723	Number of level 2 events



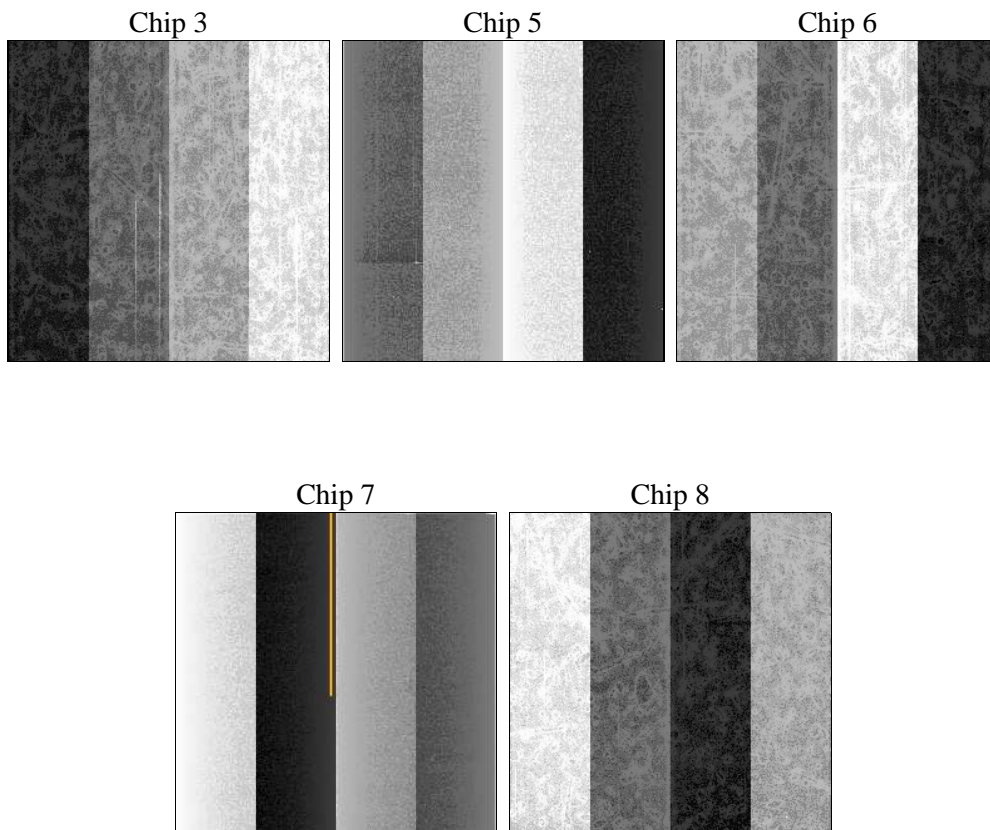
2 OBI

2.1 OBI

2.1.1 Images



2.1.2 Bias



2.1.3 Parameters

obi_num	2	Obi number	sched_exp_time	20000.000000	[s] Scheduled observation exposure time
ascdsver	8.4.3	Processing system revision	ontime	20041.500154138	Sum of GTIs [s]
caldbver	4.4.8	 	ontime3	20041.500154138	Sum of GTIs [s]
date	2012-02-28T00:56:10	Date and time of file creation	ontime5	20041.500154138	Sum of GTIs [s]
revision	2	Processing version of data	ontime6	20041.500154138	Sum of GTIs [s]
			ontime7	20041.500154138	Sum of GTIs [s]
			ontime8	20041.500154138	Sum of GTIs [s]
			l1events	789309	Number of level 1 events

2.1.4 Events

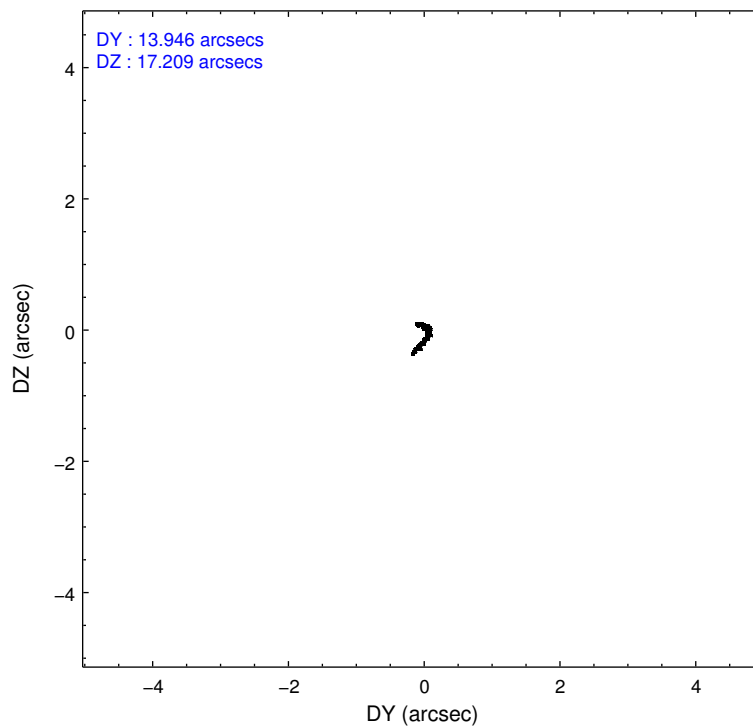
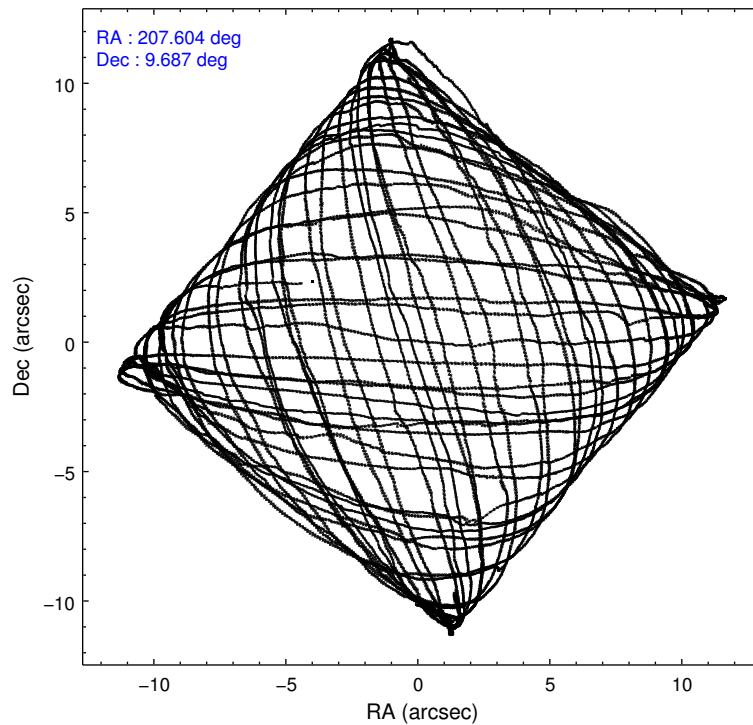
	ccd 3	ccd 5	ccd 6	ccd 7	ccd 8
level 1 events	121230	200180	125275	177580	165044
rejected events	107867	100416	109664	87120	120038
rejected %	88%	50%	87%	49%	72%

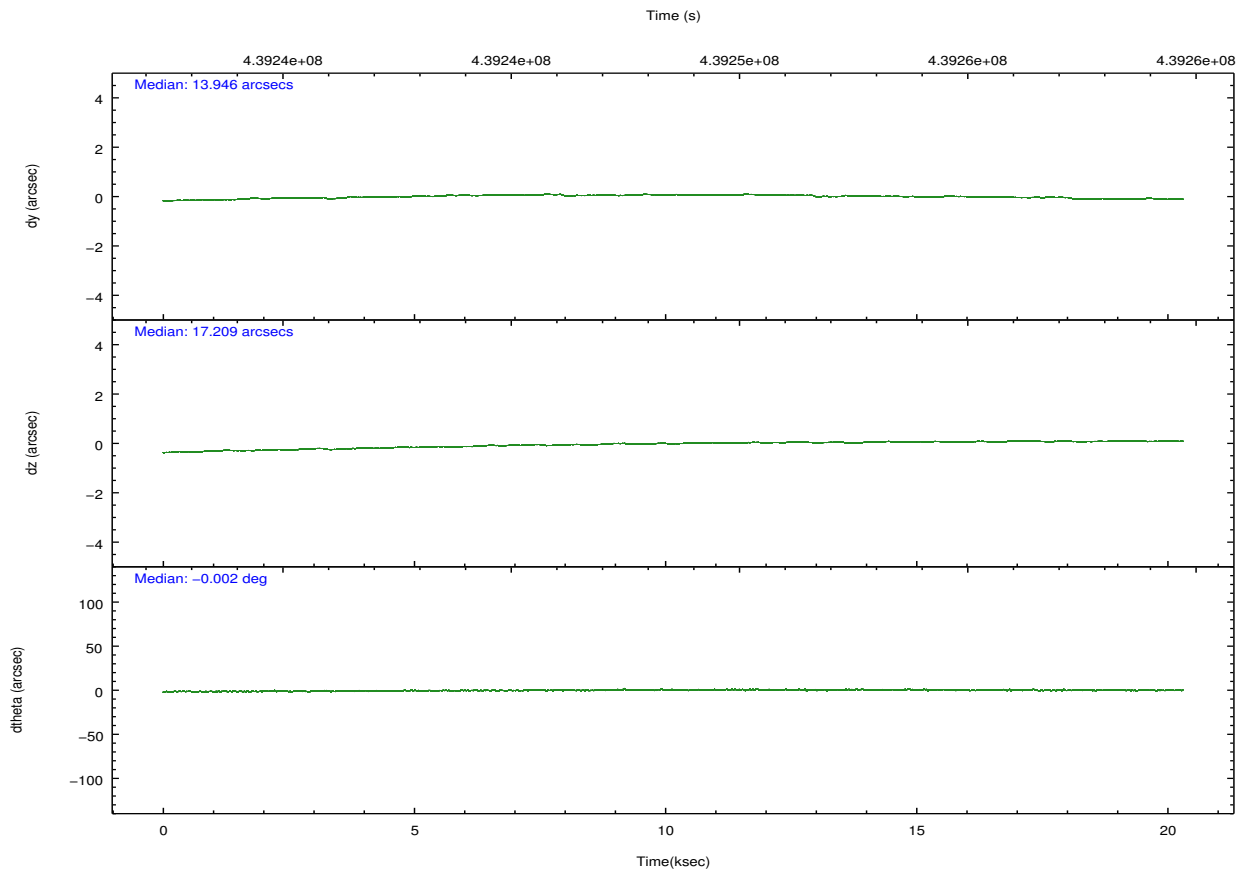
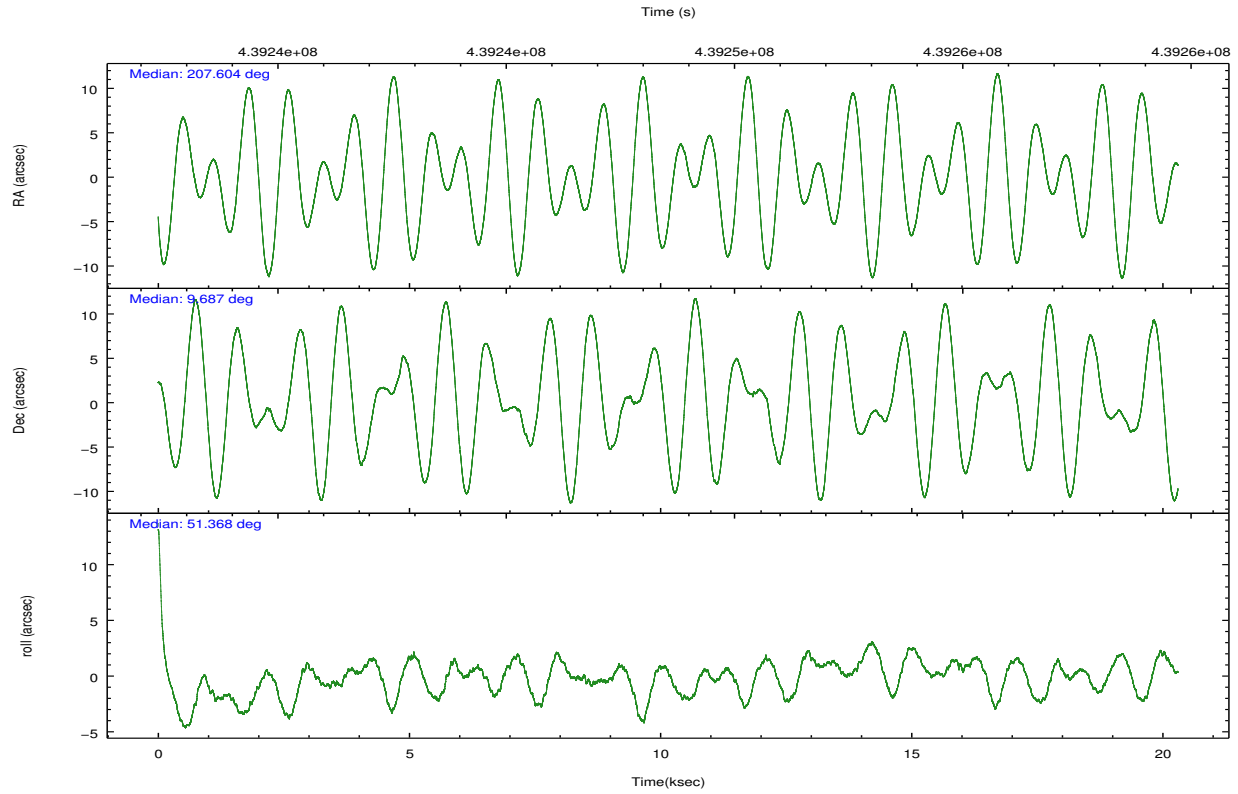
	ccd 3	ccd 5	ccd 6	ccd 7	ccd 8
grade 0 events	4689	10121	5752	12874	13537
	3%	5%	4%	7%	8%
grade 1 events	81	355	77	193	127
	0%	0%	0%	0%	0%
grade 2 events	2934	31638	3403	19694	10432
	2%	15%	2%	11%	6%
grade 3 events	1508	3762	1533	8458	4736
	1%	1%	1%	4%	2%
grade 4 events	1406	3547	1527	8434	4444
	1%	1%	1%	4%	2%
grade 5 events	5888	15111	6053	16843	8635
	4%	7%	4%	9%	5%
grade 6 events	2829	50713	3398	41013	11866
	2%	25%	2%	23%	7%
grade 7 events	101895	84933	103532	70071	111267
	84%	42%	82%	39%	67%

2.2 Compared Parameters

Parameter	Planned	Actual	Parameter	Planned	Actual
Instrument	ACIS	ACIS	Obspar format version number	7	7
Detector	ACIS-35678	ACIS-35678	Obspar file type	PREDICTED	ACTUAL
Grating	NONE	NONE	Obspar update status	NONE	UPDATED
Data mode	VFAINT	VFAINT	CCD I0 on	N	N
Observation mode	POINTING	POINTING	CCD I1 on	N	N
[deg] Pointing RA	207.599903	207.603667505927	CCD I2 on	N	N
[deg] Pointing Dec	9.660391	9.687453211040644	CCD I3 on	O1	Y
[deg] Pointing Roll	51.221895	51.37789353750992	CCD S0 on	N	N
[mm] SIM focus pos	-0.684267	-0.6828225247311905	CCD S1 on	Y	Y
[mm] SIM defocus	0	0.001444936568705701	CCD S2 on	Y	Y
[mm] SIM translation stage pos	-190.132523	-190.1425803651734	CCD S3 on	Y	Y
[mm] SIM translation stage offset	0	0.01005778216563158	CCD S4 on	O2	Y
[s] Observation start time (MET)	439238699.184000	439237708.30003	CCD S5 on	N	N
Observation start date	2011-12-02T18:43:53	2011-12-02T18:28:28	Number of optional ACIS chips dropped	0	0
[s] Observation end time (MET)	439258699.184000	439259172.31366	On-chip summing requested	N	N
Observation end date	2011-12-03T00:17:13	2011-12-03T00:26:12	Subarray requested	NONE	NONE
Read mode	TIMED	TIMED	Alternating exposures requested	N	N
			[s] Primary exposure time	0.000000	3.1

2.3 Aspect



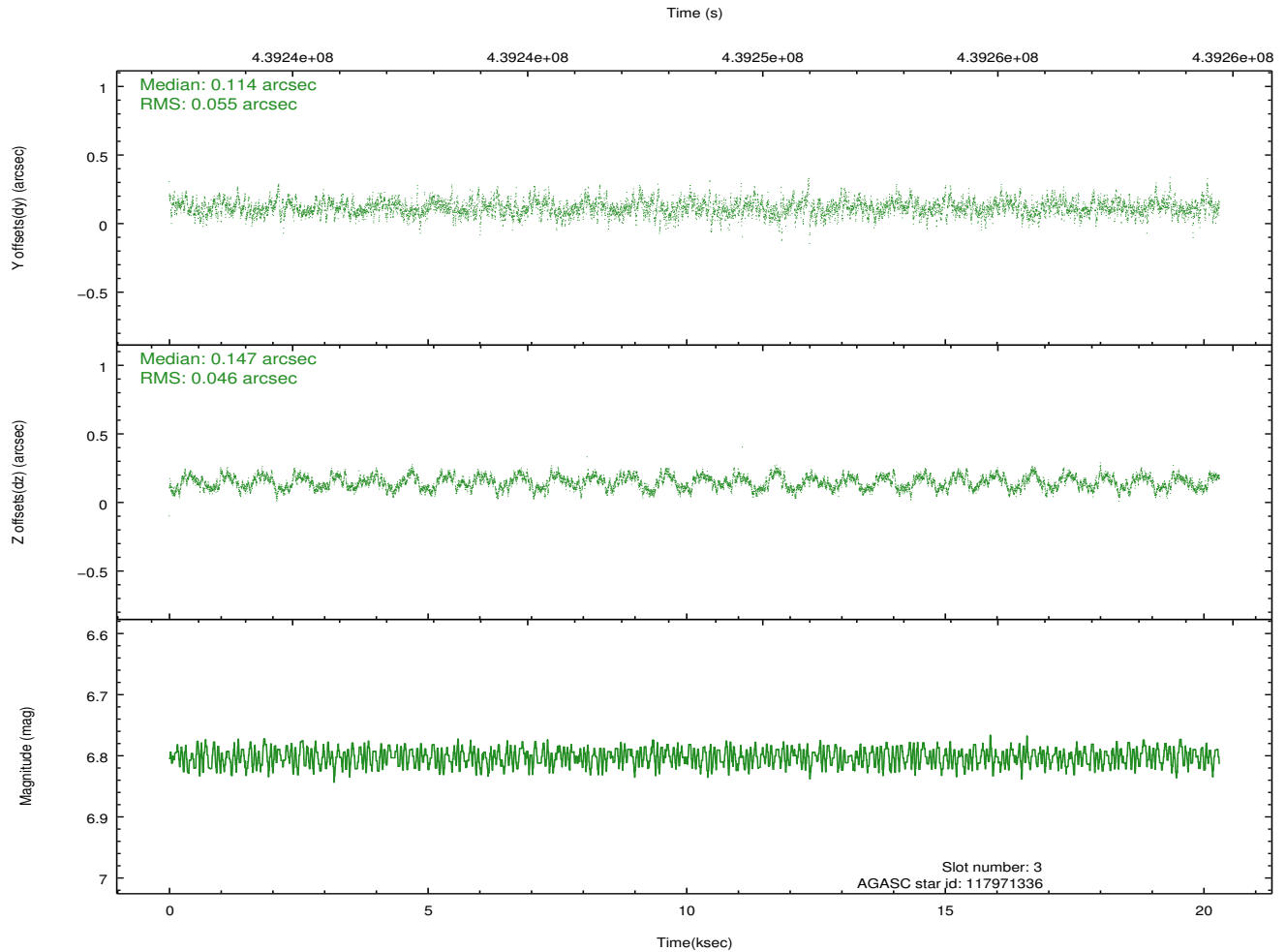
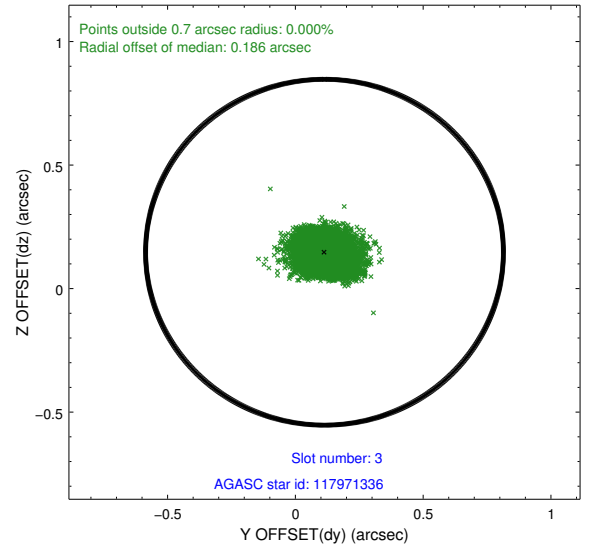
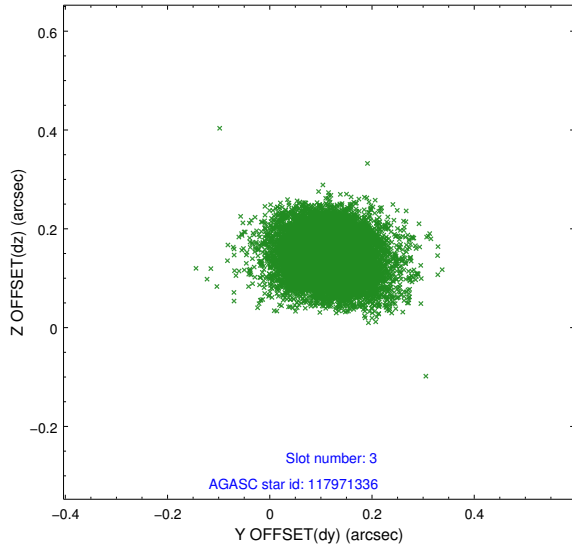


Slot Statistics

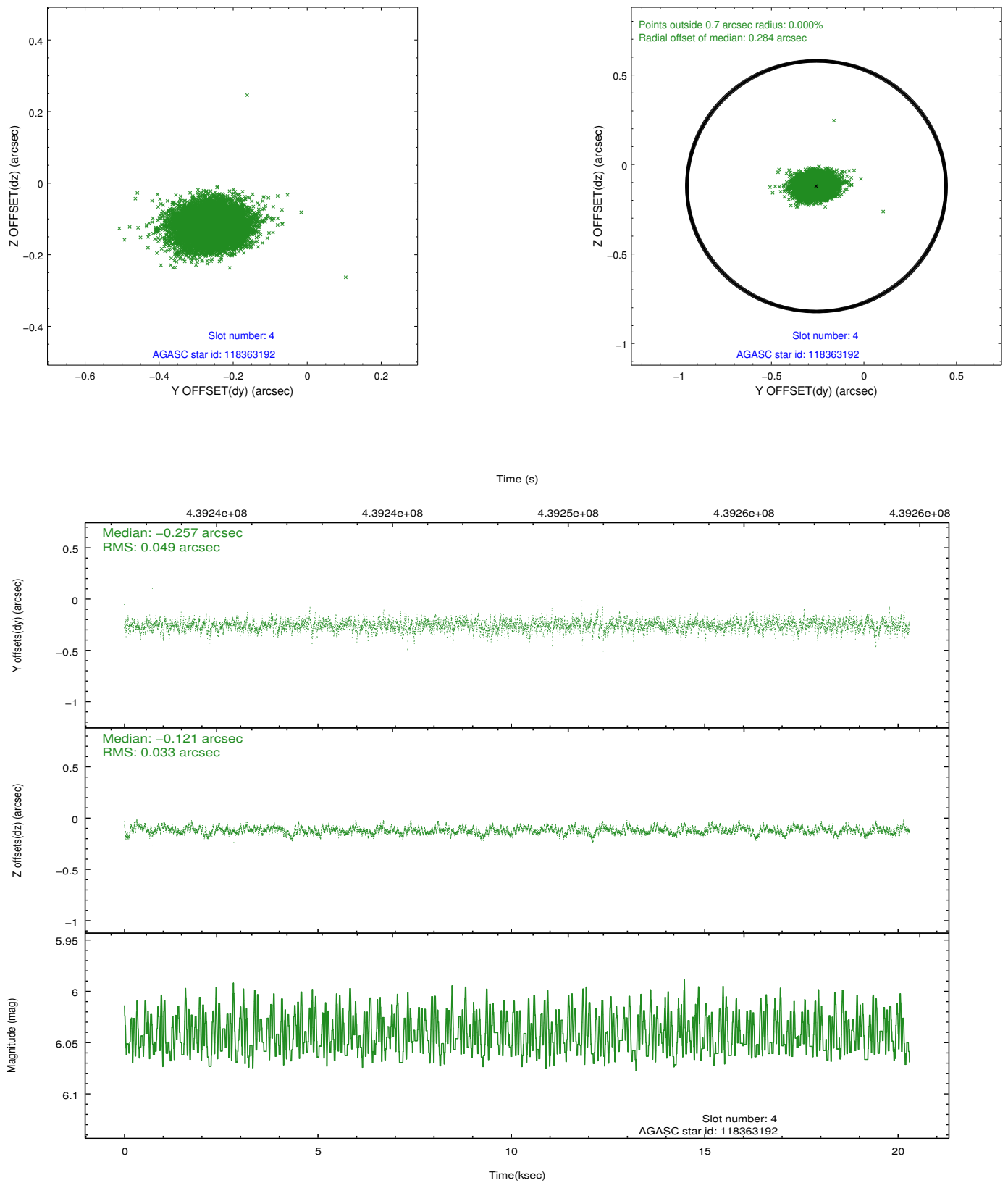
slot	status	id	mag	n_pts	med_dy	med_dz	dr1	dr2	ra	dec	mean_y	mean_z
0	FID	ACIS-S-2	6.89	4951	-0.054	-0.039	0.008	0.014	0.000000	0.000000	-766.98	-1738.56
1	FID	ACIS-S-4	6.97	4951	0.235	0.037	0.006	0.011	0.000000	0.000000	2146.55	169.73
2	FID	ACIS-S-5	7.01	4953	-0.212	0.011	0.008	0.013	0.000000	0.000000	-1819.69	163.69
3	GUIDE	117971336	6.80	9904	0.114	0.147	0.075	0.122	207.213356	9.713286	-710.30	1189.19
4	GUIDE	118363192	6.04	9905	-0.257	-0.121	0.060	0.103	207.965823	10.135923	2146.88	62.16
5	GUIDE	118367408	7.86	9903	0.075	-0.204	0.077	0.124	207.249768	10.074605	386.08	1901.60
6	GUIDE	117969976	8.79	9901	0.066	0.344	0.117	0.195	208.454893	9.635369	1834.34	-2419.00
7	GUIDE	118364080	8.98	9898	0.006	-0.165	0.109	0.166	207.138411	10.151191	355.21	2382.05

2.4 Star Slots

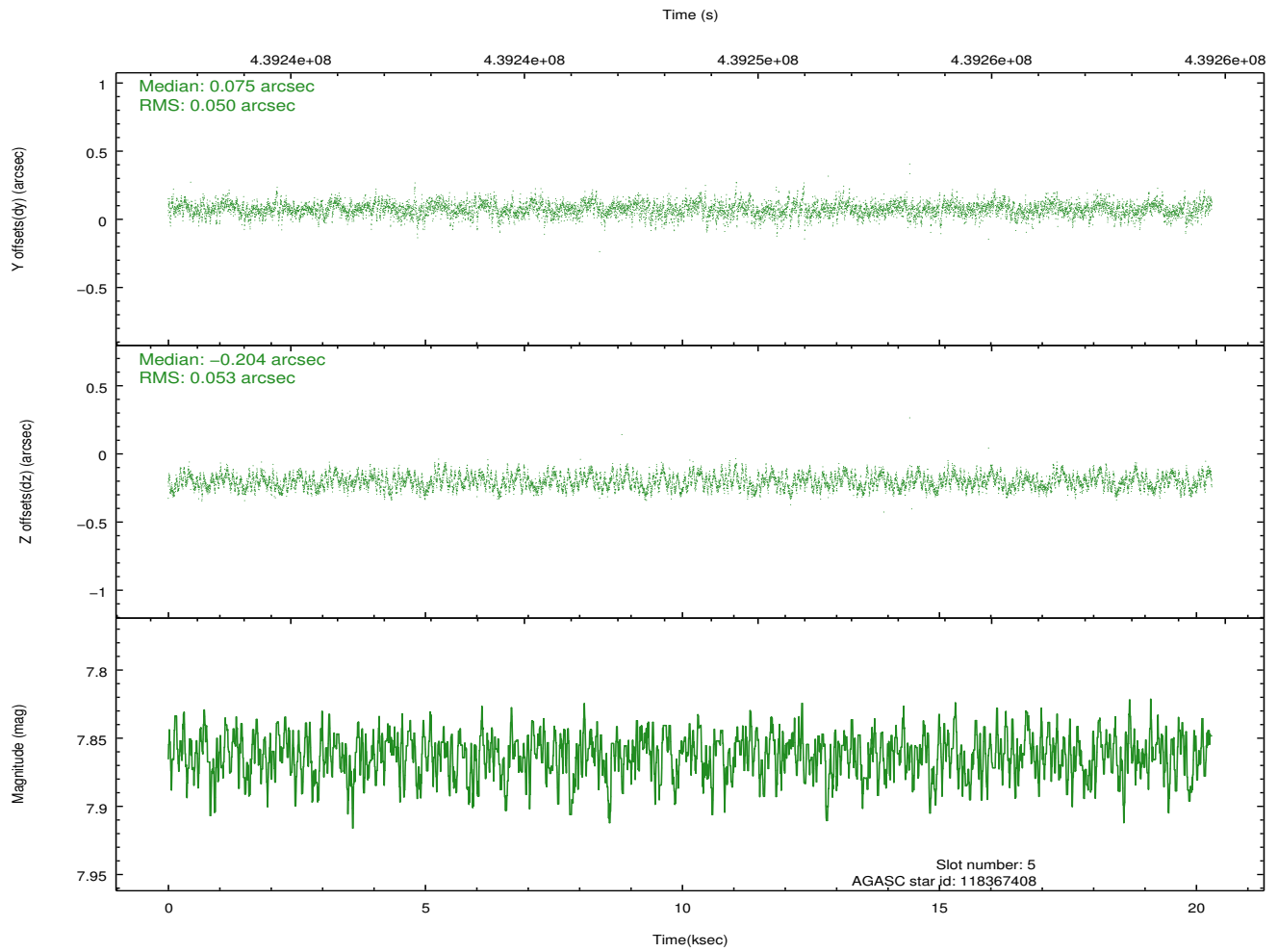
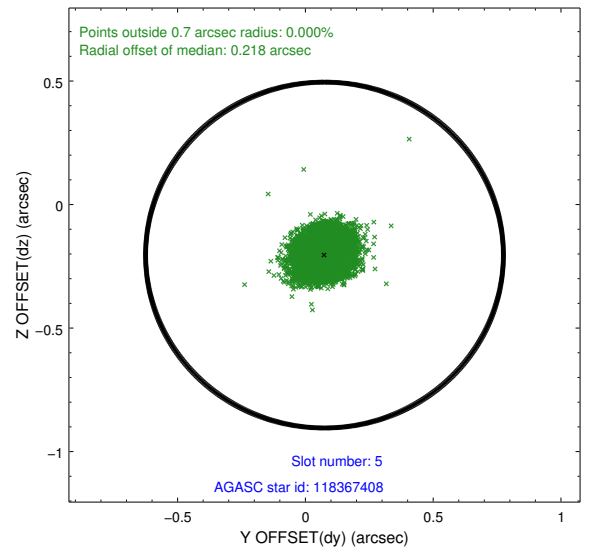
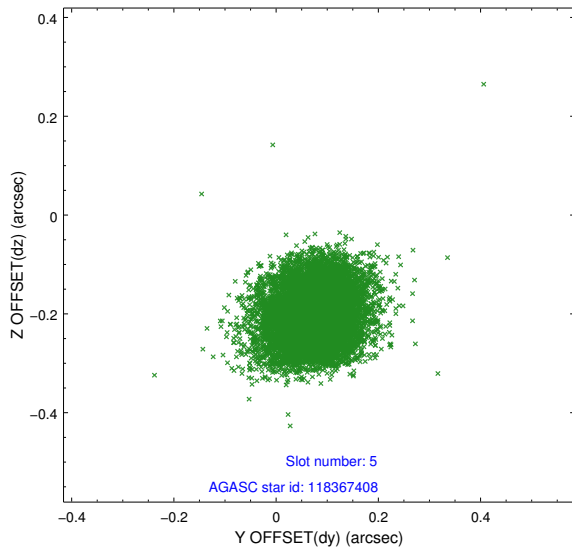
2.4.1 Slot 3



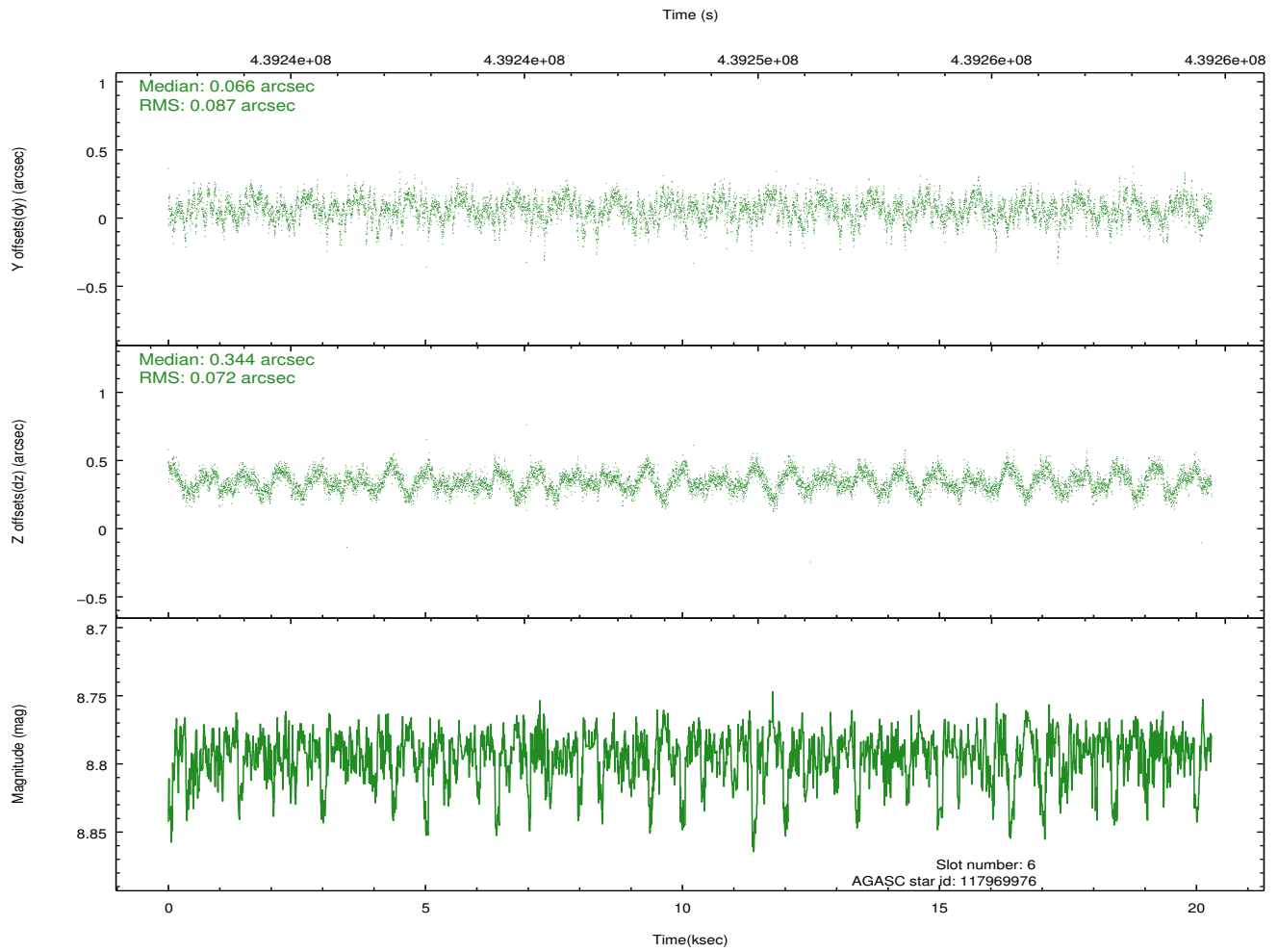
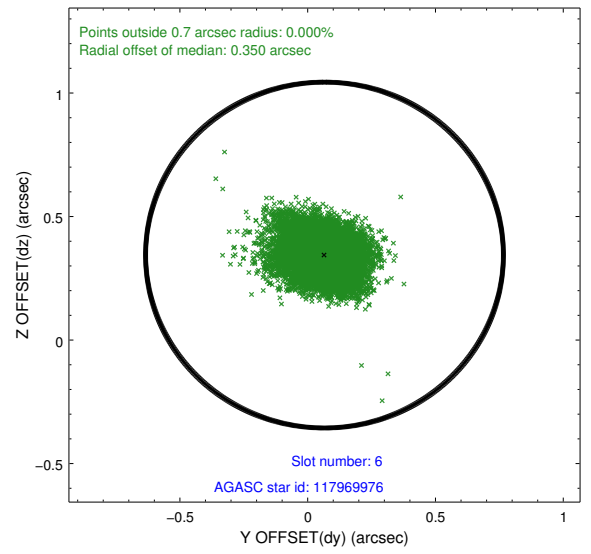
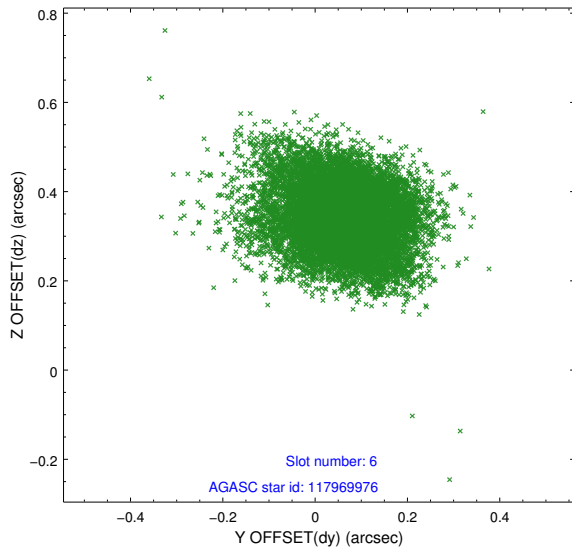
2.4.2 Slot 4



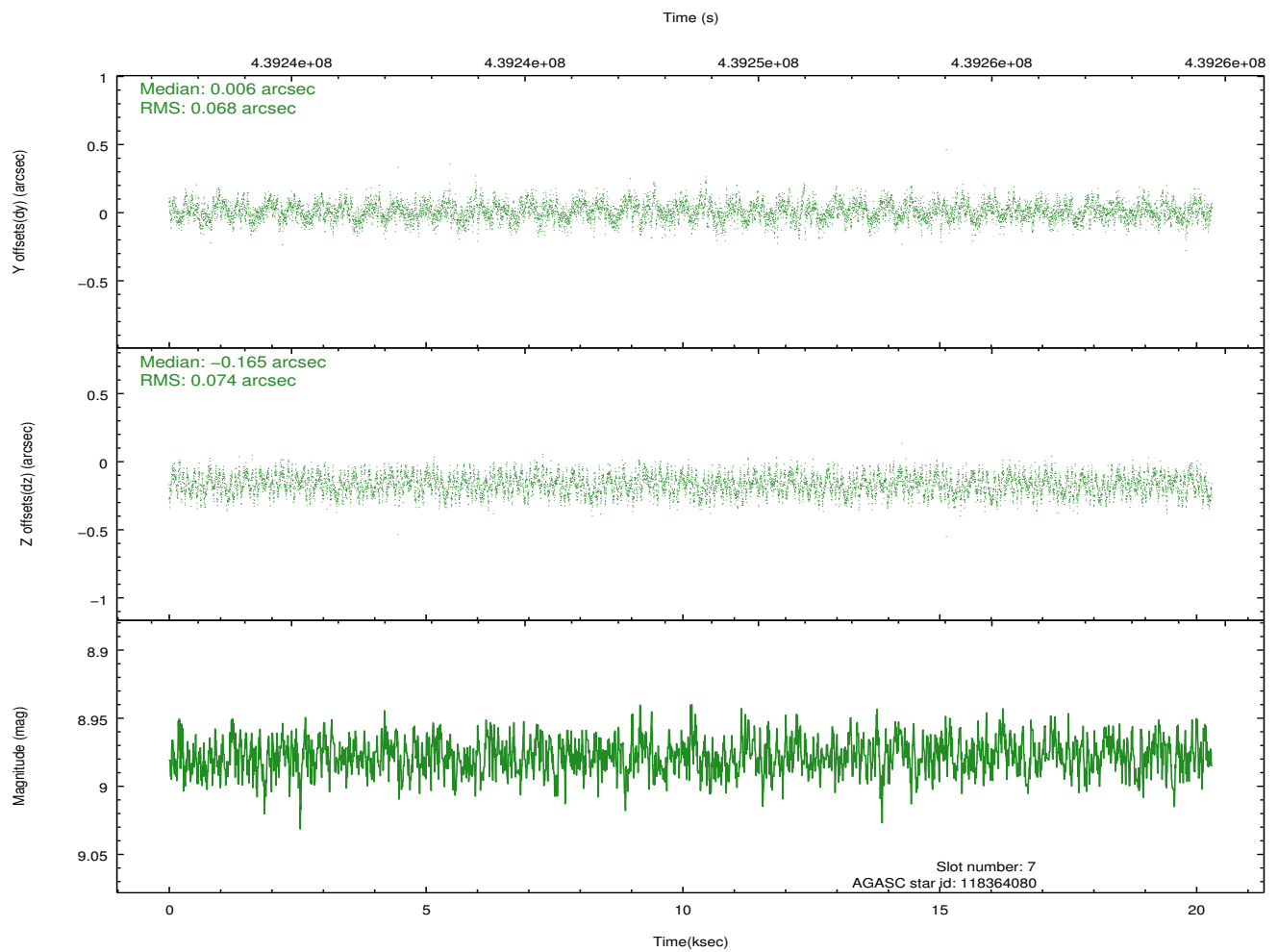
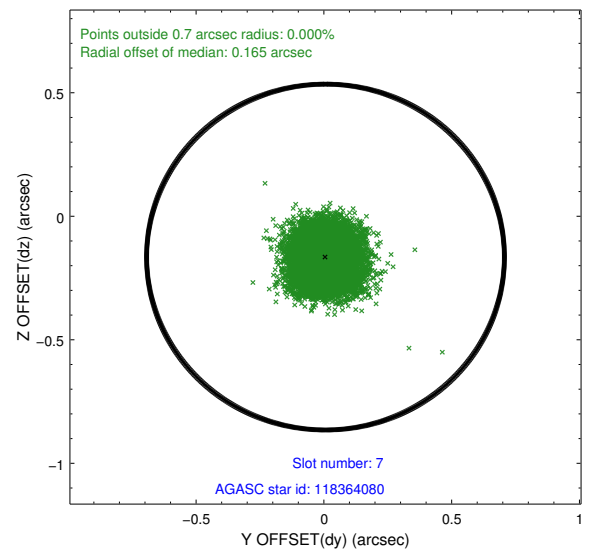
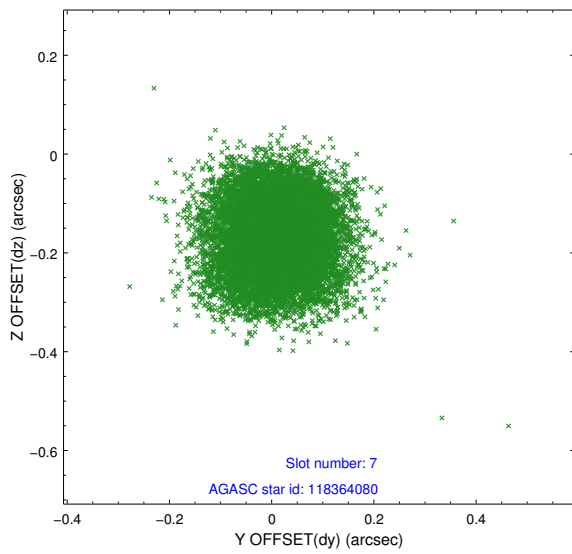
2.4.3 Slot 5



2.4.4 Slot 6

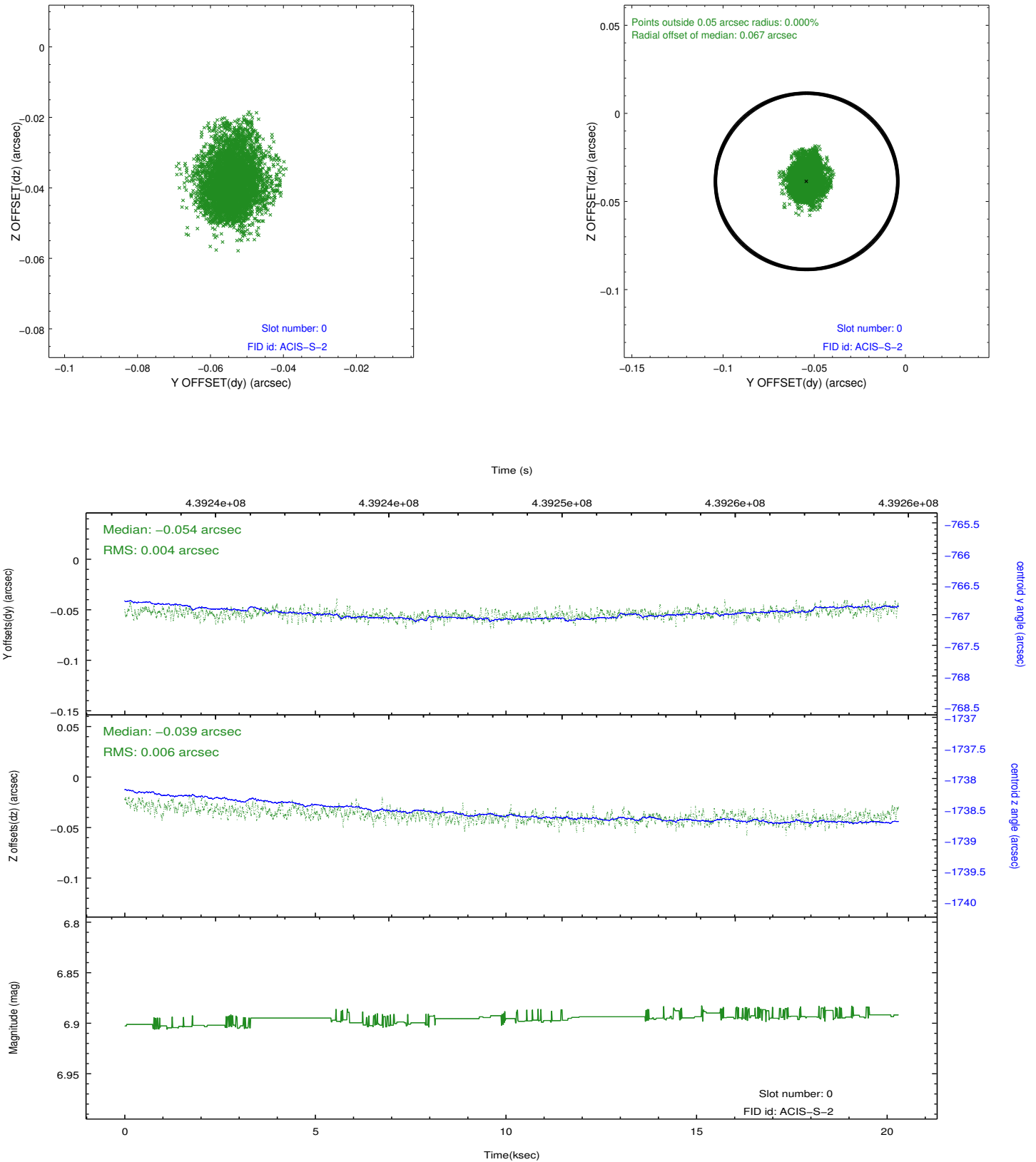


2.4.5 Slot 7

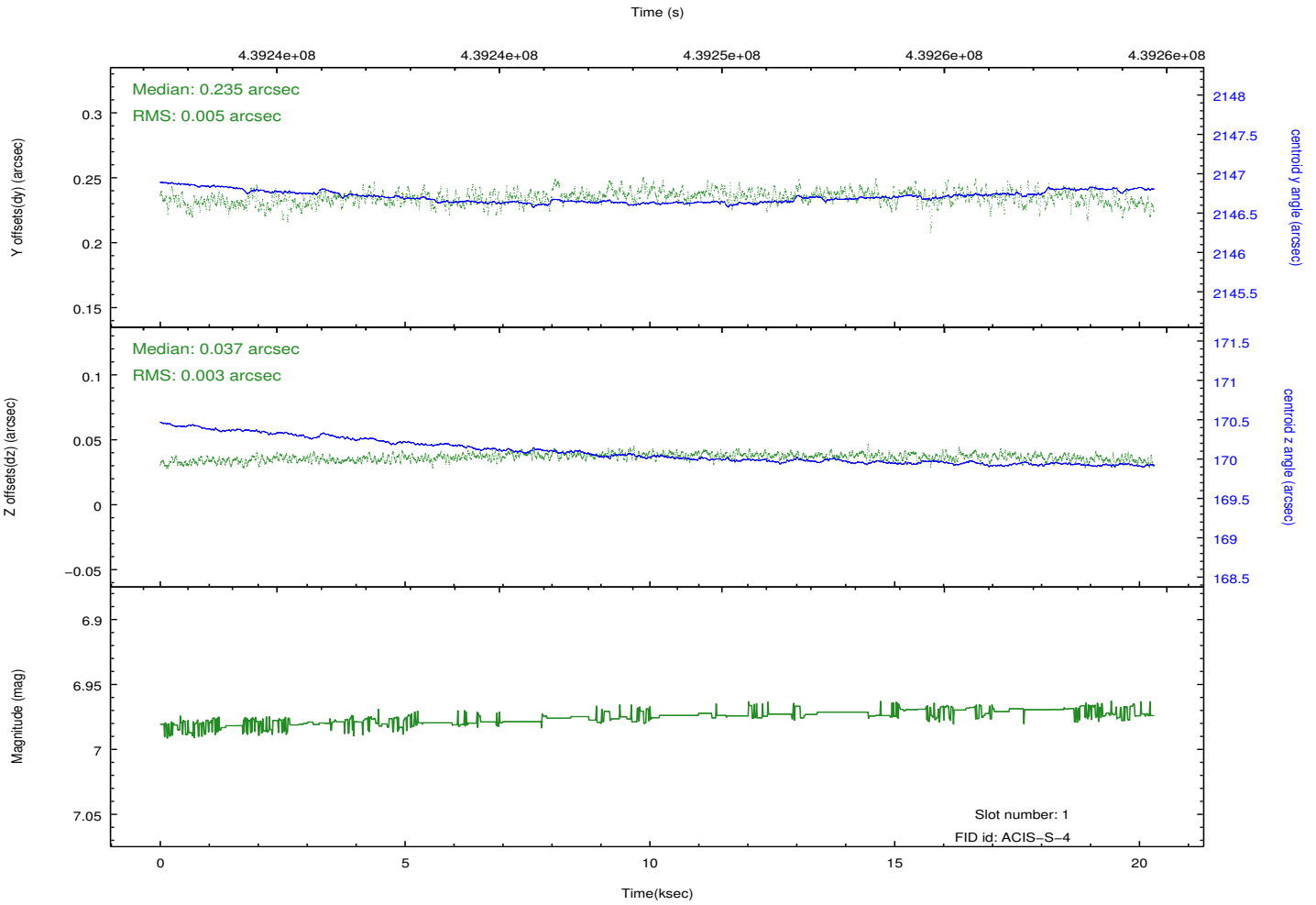
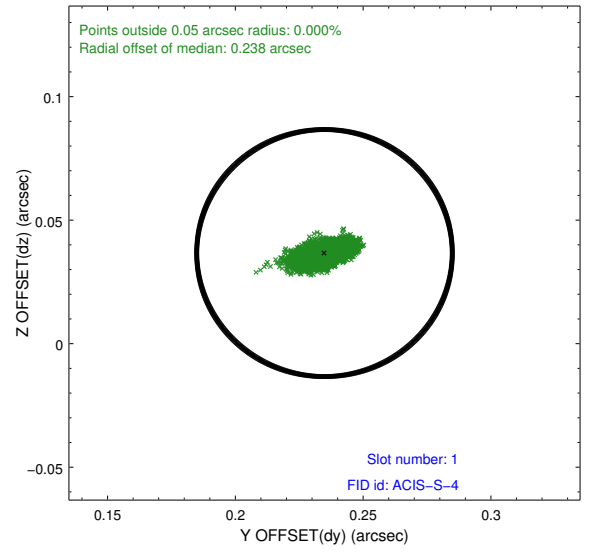
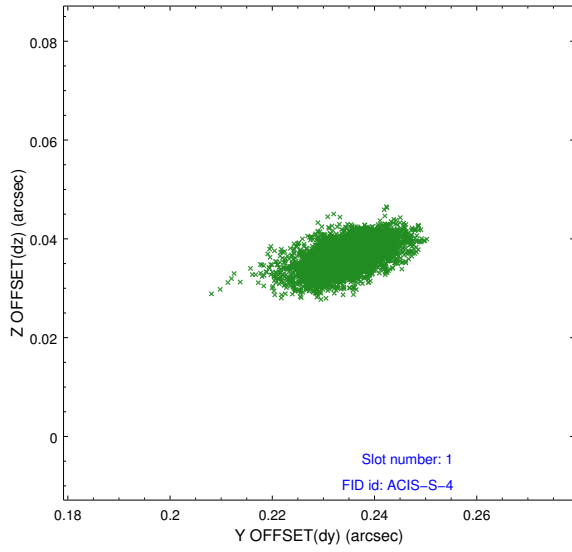


2.5 FID Slots

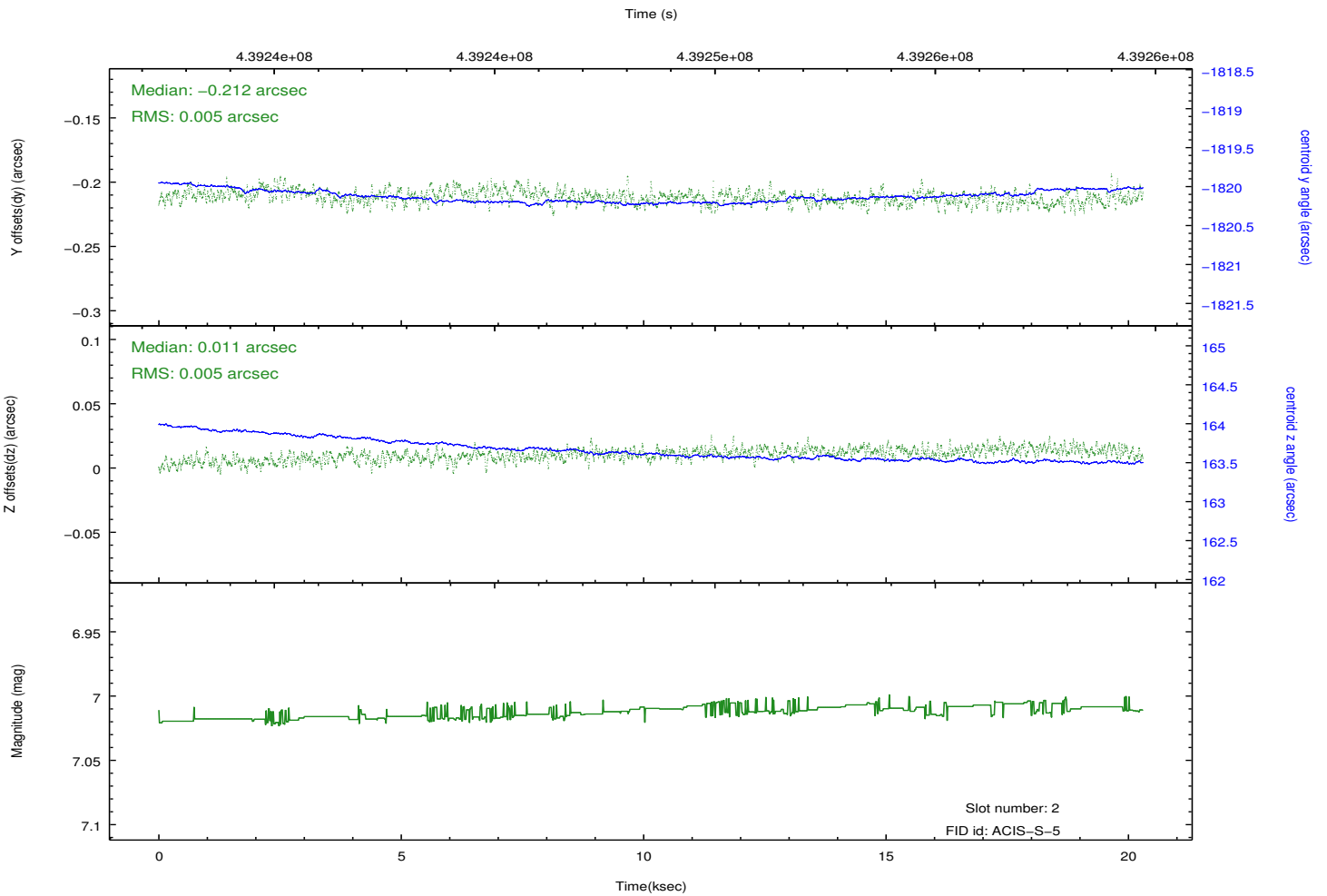
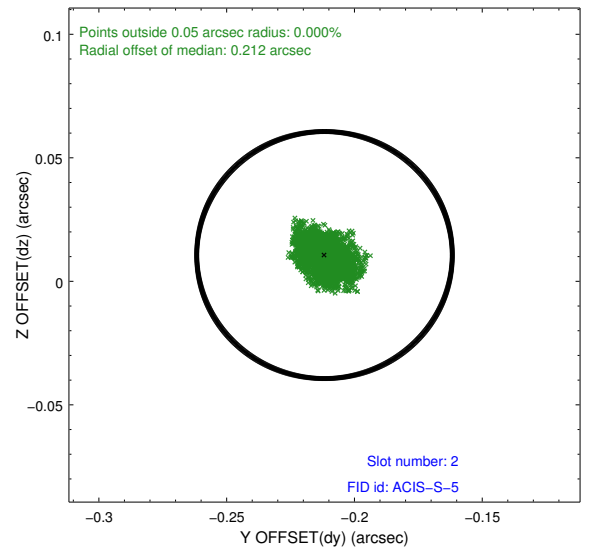
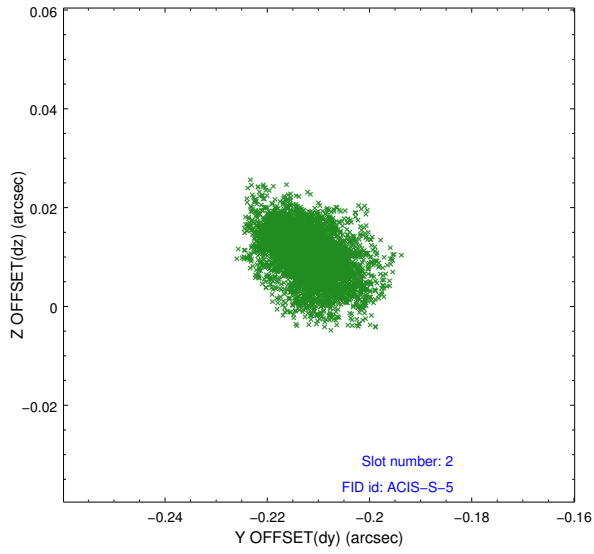
2.5.1 Slot 0



2.5.2 Slot 1



2.5.3 Slot 2



A Summary

A.1 Status

V&V Scientist	Beth Sundheim
V&V Date (YYYY-MM-DD)	2012.02.29
V&V Edition	1
V&V Disposition and Status	OK
V&V Charge Time	20.041500154138

A.2 Comments