

V&V Reference Report

L2 ASCDS Version : 8.4.3

Observation 14051 - L2 Version 2
Chandra X-Ray Center

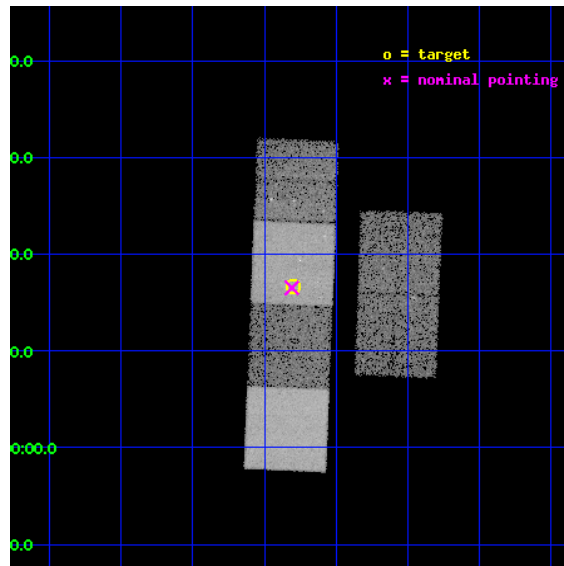
L2 Processing Date : Feb 23 2012

Contents

1	Front	2
2	OBI	3
2.1	OBI	3
2.1.1	Images	3
2.1.2	Bias	3
2.1.3	Parameters	4
2.1.4	Events	4
2.2	Compared Parameters	5
2.3	Aspect	6
2.4	Star Slots	9
2.4.1	Slot 3	9
2.4.2	Slot 4	10
2.4.3	Slot 5	11
2.4.4	Slot 6	12
2.4.5	Slot 7	13
2.5	FID Slots	14
2.5.1	Slot 0	14
2.5.2	Slot 1	15
2.5.3	Slot 2	16
A	Summary	17
A.1	Status	17
A.2	Comments	17

1 Front

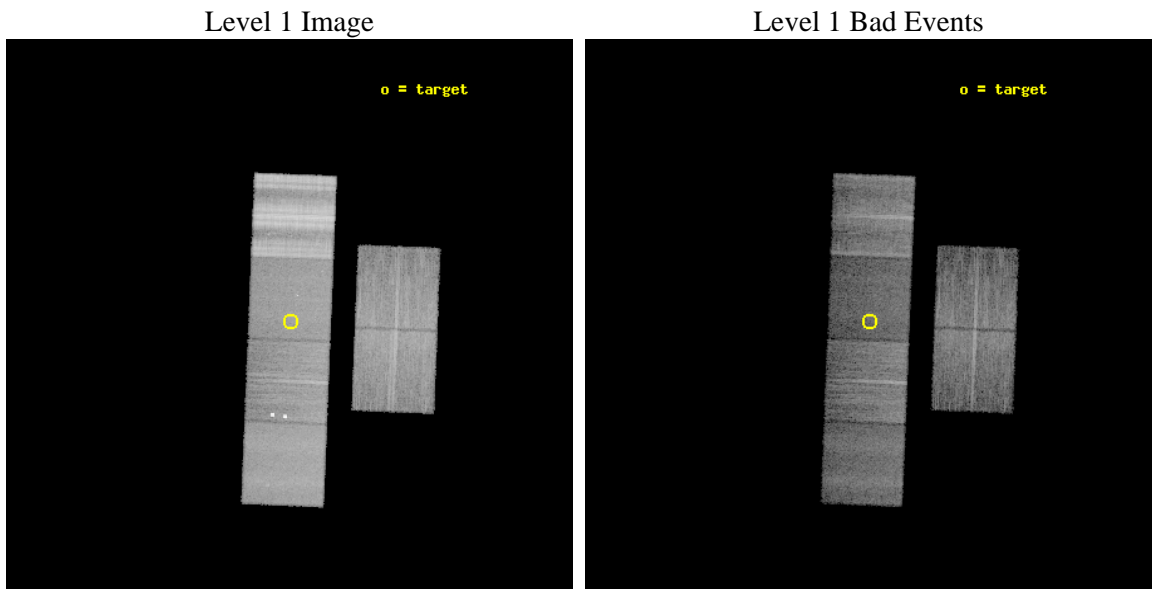
seq_num	901017	Sequence number
obs_id	14051	Observation id
title	The demographics of dark gamma-ray bursts	Proposal title
observer	Dr Andrew Levan	Principal investigator
object	GRB 110915A	Source name
dtcycle	0	
cycle	P	events from which exps? Prim/Second/Both
ra_targ	310.824542	Observer's specified target RA [deg]
dec_targ	-0.723222	Observer's specified target Dec [deg]
ra_nom	310.8271423642	Nominal RA [deg]
dec_nom	-0.72474777787934	Nominal Dec [deg]
roll_nom	272.26432405372	Nominal Roll [deg]
revision	2	Processing version of data
ontime	15046.399944007	Sum of GTIs [s]
livetime	14855.873368062	Livetime [s]
ontime2	15043.158913672	Sum of GTIs [s]
ontime3	15039.917933047	Sum of GTIs [s]
ontime5	15046.399944007	Sum of GTIs [s]
ontime6	15046.399944007	Sum of GTIs [s]
ontime7	15046.399944007	Sum of GTIs [s]
ontime8	15046.399944007	Sum of GTIs [s]
l2events	164689	Number of level 2 events



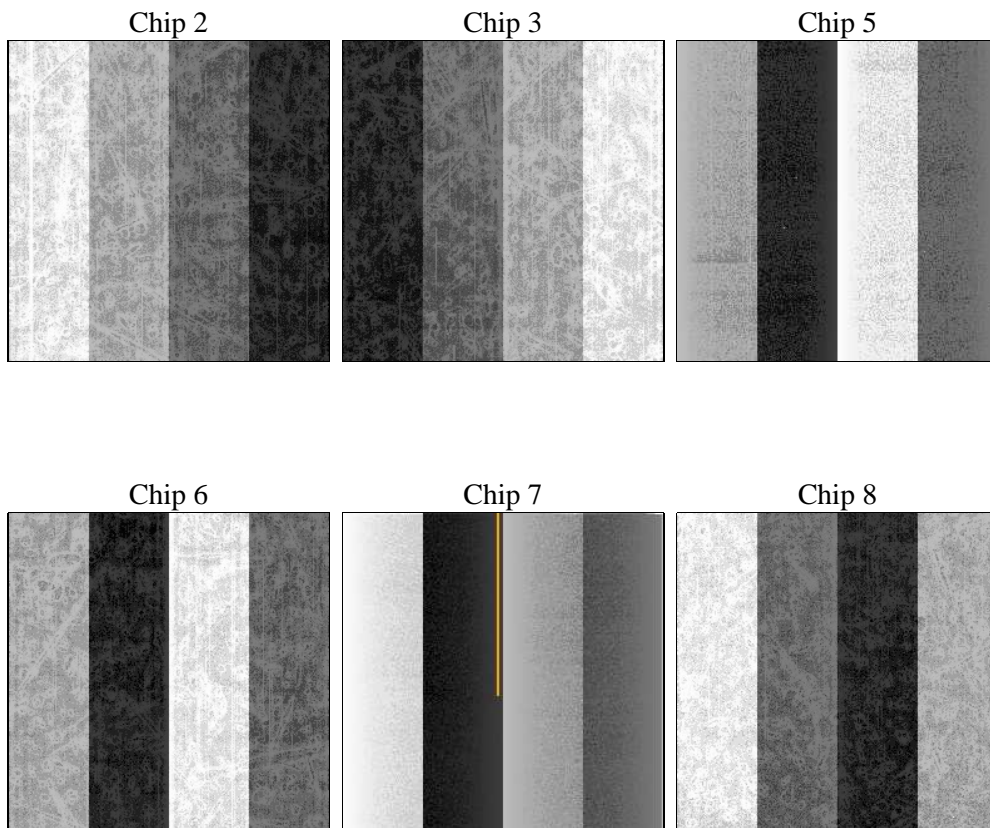
2 OBI

2.1 OBI

2.1.1 Images



2.1.2 Bias



2.1.3 Parameters

obi_num	0	Obi number	sched_exp_time	15000.000000	[s] Scheduled observation exposure time
ascdsver	8.4.3	Processing system revision	ontime	15046.399944007	Sum of GTIs [s]
caldbver	4.4.8	 	ontime2	15043.158913672	Sum of GTIs [s]
date	2012-02-23T14:58:26	Date and time of file creation	ontime3	15039.917933047	Sum of GTIs [s]
revision	2	Processing version of data	ontime5	15046.399944007	Sum of GTIs [s]
			ontime6	15046.399944007	Sum of GTIs [s]
			ontime7	15046.399944007	Sum of GTIs [s]
			ontime8	15046.399944007	Sum of GTIs [s]
			l1events	891332	Number of level 1 events

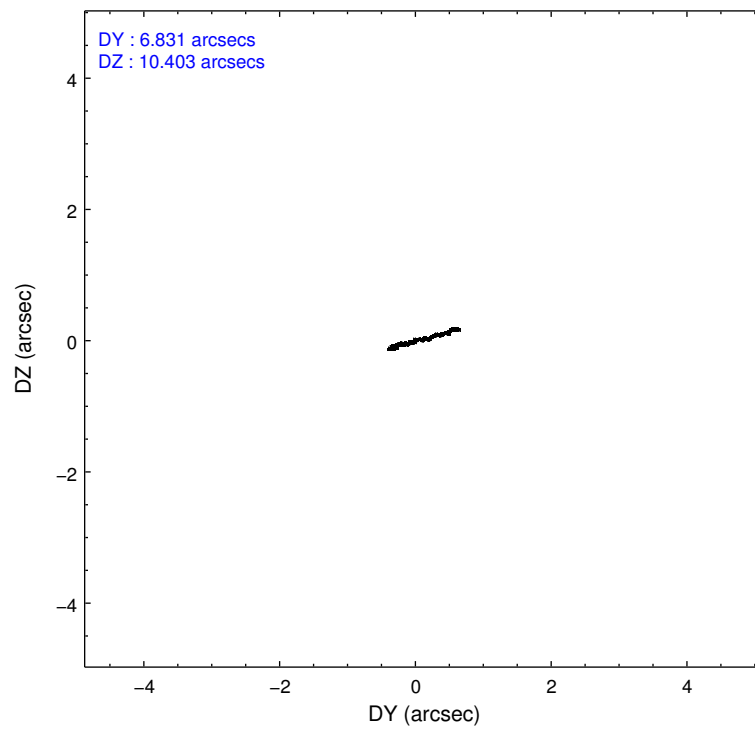
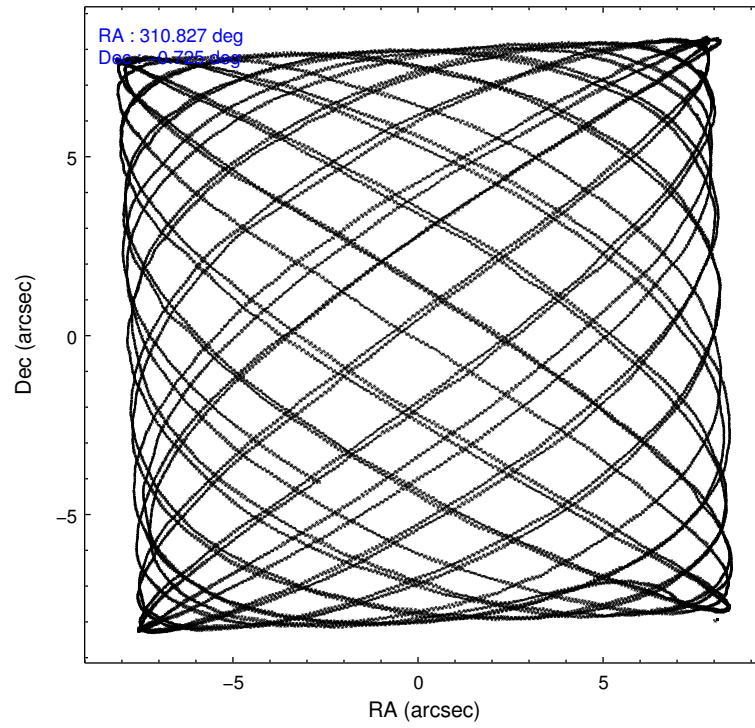
2.1.4 Events

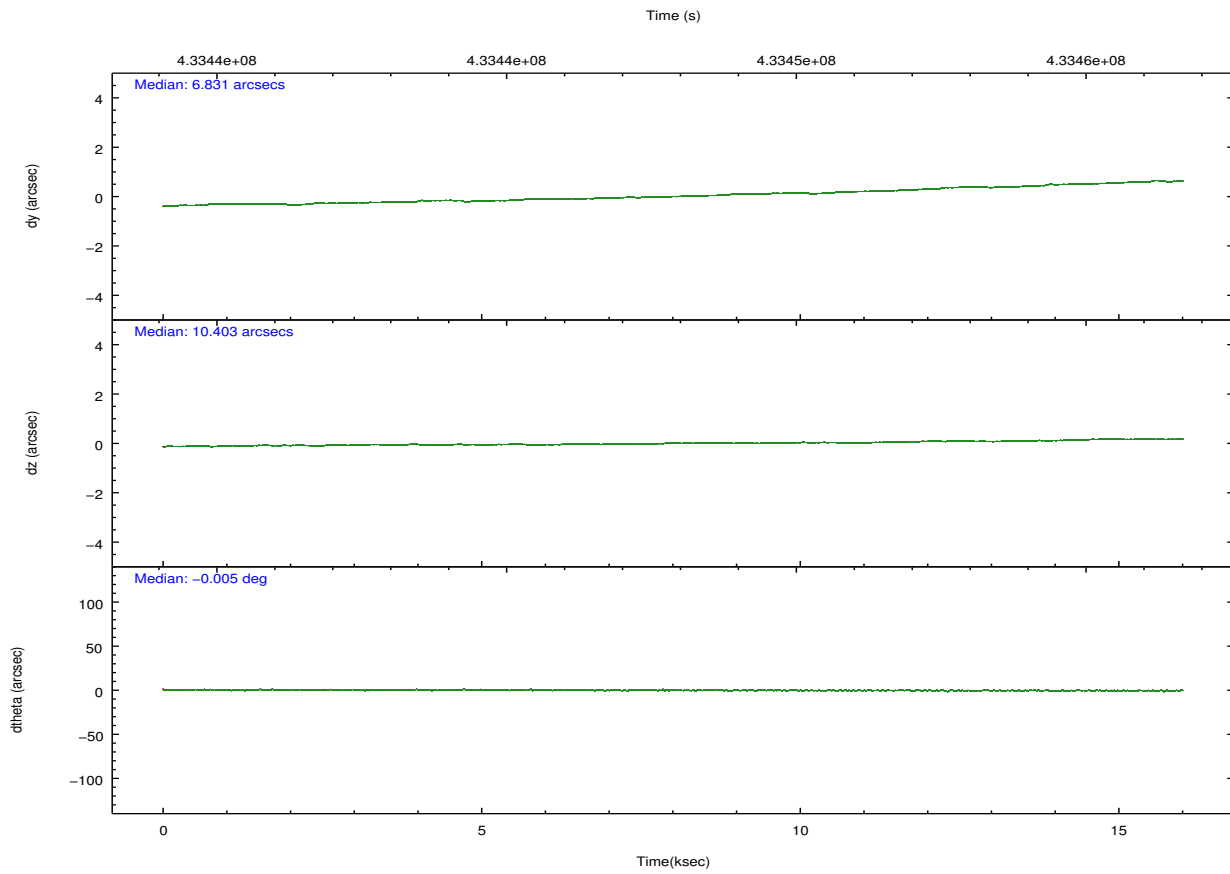
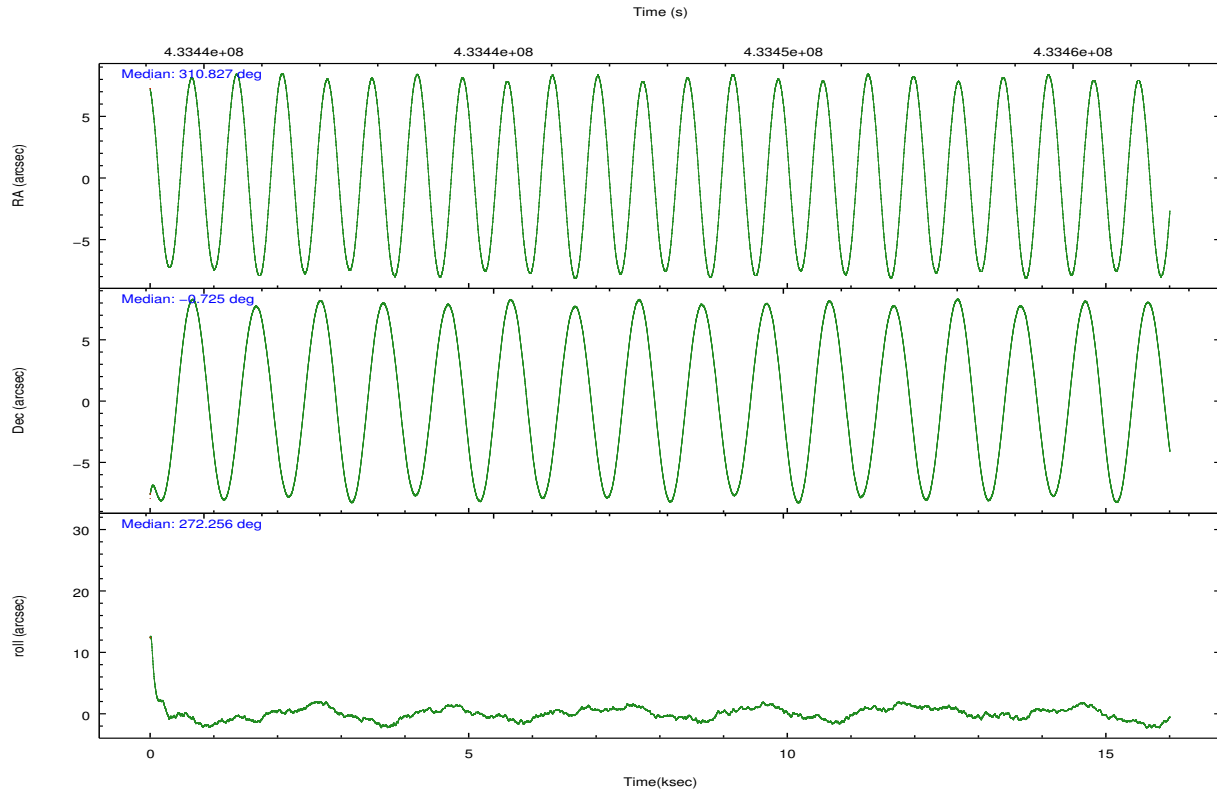
	ccd 2	ccd 3	ccd 5	ccd 6	ccd 7	ccd 8		ccd 2	ccd 3	ccd 5	ccd 6	ccd 7	ccd 8
level 1 events	112223	103211	147629	123956	119554	284759	grade 0 events	6367	4086	5408	14988	5371	56596
rejected events	97344	92708	76717	100691	64378	113044		5%	3%	3%	12%	4%	19%
rejected %	86%	89%	51%	81%	53%	39%	grade 1 events	87	60	380	92	220	486
								0%	0%	0%	0%	0%	0%
							grade 2 events	4033	2331	22424	3739	12525	23410
								3%	2%	15%	3%	10%	8%
							grade 3 events	1010	1042	3519	1123	4820	30486
								0%	1%	2%	0%	4%	10%
							grade 4 events	1343	1024	3363	1050	4761	27769
								1%	0%	2%	0%	3%	9%
							grade 5 events	3572	3939	10694	4021	11729	7644
								3%	3%	7%	3%	9%	2%
							grade 6 events	2132	2022	36211	2375	27712	33472
								1%	1%	24%	1%	23%	11%
							grade 7 events	93679	88707	65630	96568	52416	104896
								83%	85%	44%	77%	43%	36%

2.2 Compared Parameters

Parameter	Planned	Actual	Parameter	Planned	Actual
Instrument	ACIS	ACIS	Obspar format version number	7	7
Detector	ACIS-235678	ACIS-235678	Obspar file type	PREDICTED	ACTUAL
Grating	NONE	NONE	Obspar update status	NONE	UPDATED
Data mode	VFAINT	VFAINT	CCD I0 on	N	N
Observation mode	POINTING	POINTING	CCD I1 on	N	N
[deg] Pointing RA	310.812246	310.827142364197	CCD I2 on	O1	Y
[deg] Pointing Dec	-0.701825	-0.724747777879336	CCD I3 on	O2	Y
[deg] Pointing Roll	272.107511	272.2643240537197	CCD S0 on	N	N
[mm] SIM focus pos	-0.684267	-0.6828225247311905	CCD S1 on	Y	Y
[mm] SIM defocus	0	0.001444936568705701	CCD S2 on	Y	Y
[mm] SIM translation stage pos	-190.132523	-190.1400660498719	CCD S3 on	Y	Y
[mm] SIM translation stage offset	0	0.00754346686406393	CCD S4 on	Y	Y
[s] Observation start time (MET)	433440877.184000	433439229.39528	CCD S5 on	N	N
Observation start date	2011-09-26T16:13:31	2011-09-26T15:47:09	Number of optional ACIS chips dropped	0	0
[s] Observation end time (MET)	433455877.184000	433456544.20869	On-chip summing requested	N	N
Observation end date	2011-09-26T20:23:31	2011-09-26T20:35:44	Subarray requested	NONE	NONE
Read mode	TIMED	TIMED	Alternating exposures requested	N	N
			[s] Primary exposure time	0.000000	3.2

2.3 Aspect



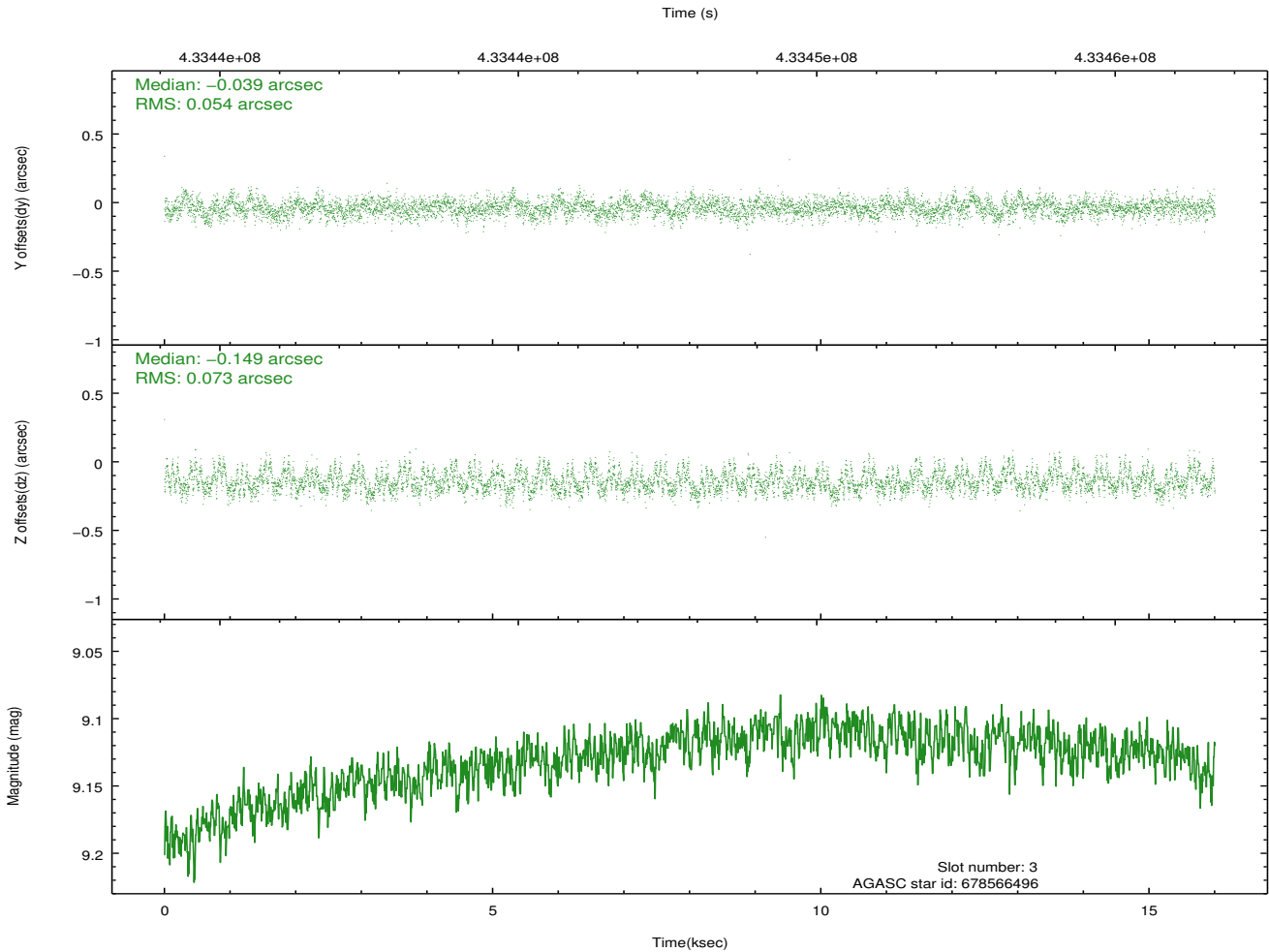
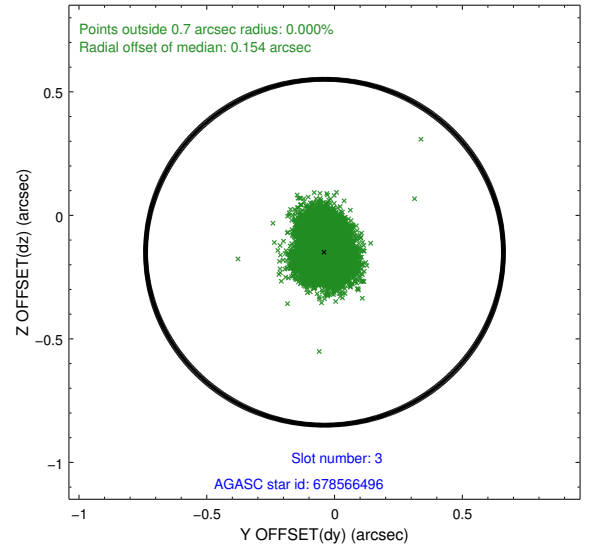
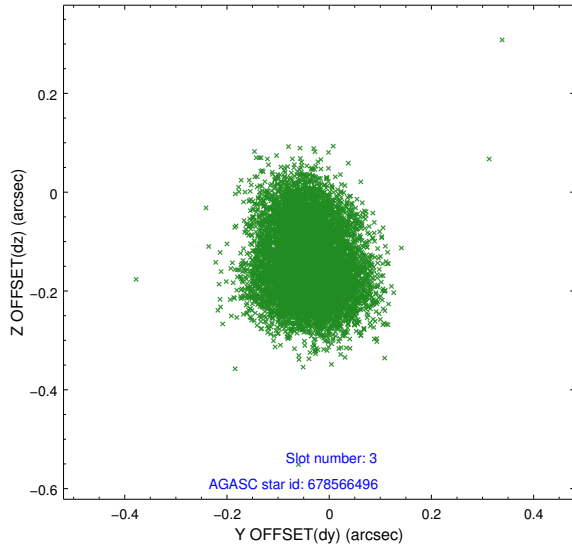


Slot Statistics

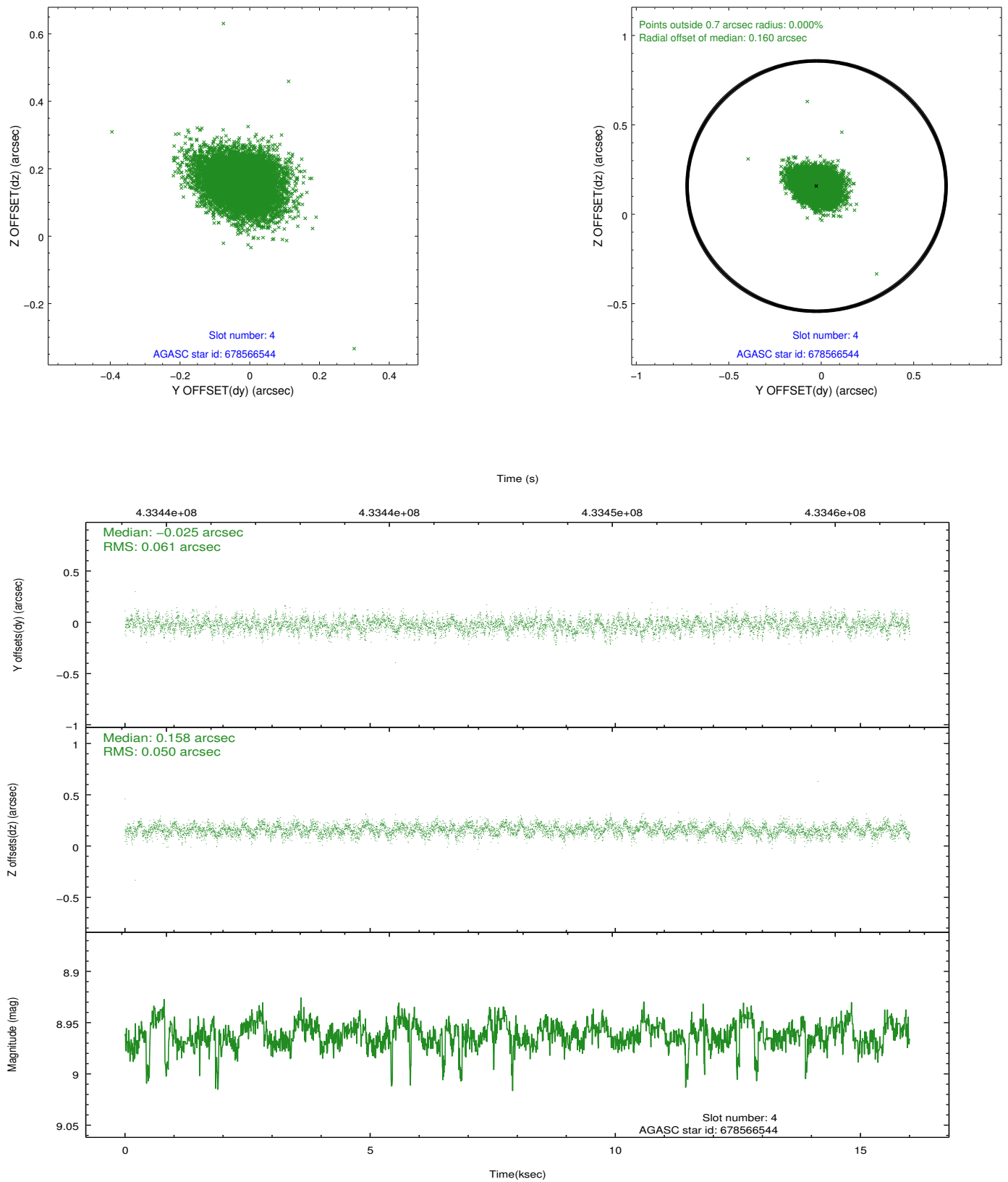
slot	status	id	mag	n_pts	med_dy	med_dz	dr1	dr2	ra	dec	mean_y	mean_z
0	FID	ACIS-S-1	7.03	3904	0.029	-0.069	0.011	0.019	0.000000	0.000000	936.43	-1727.36
1	FID	ACIS-S-4	7.05	3904	0.128	0.039	0.007	0.012	0.000000	0.000000	2154.08	176.63
2	FID	ACIS-S-5	7.07	3904	-0.183	0.043	0.011	0.020	0.000000	0.000000	-1812.31	170.51
3	GUIDE	678566496	9.13	7803	-0.039	-0.149	0.097	0.154	310.224984	-0.597414	-452.31	-2099.31
4	GUIDE	678566544	8.96	7805	-0.025	0.158	0.082	0.136	311.152506	-0.101328	-2115.13	1303.95
5	GUIDE	678567480	8.98	7805	0.063	-0.055	0.078	0.124	310.342585	-0.463802	-918.07	-1657.76
6	GUIDE	678692472	8.93	7803	-0.032	0.026	0.089	0.142	311.351291	-0.805097	443.22	1925.22
7	GUIDE	678570896	9.50	7797	0.034	0.017	0.106	0.170	310.259774	-1.042307	1152.80	-2031.63

2.4 Star Slots

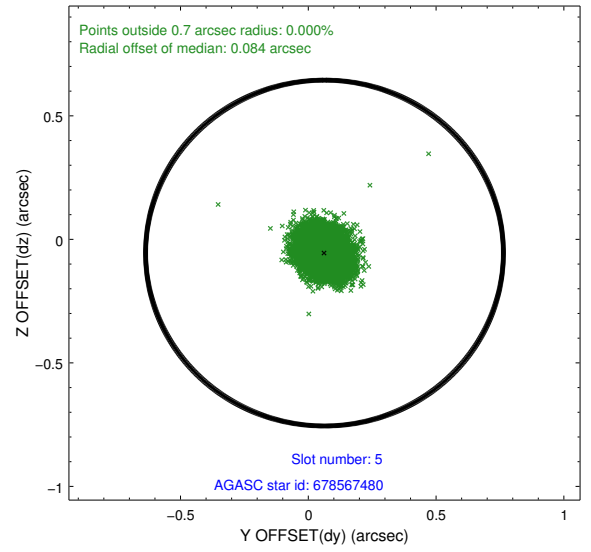
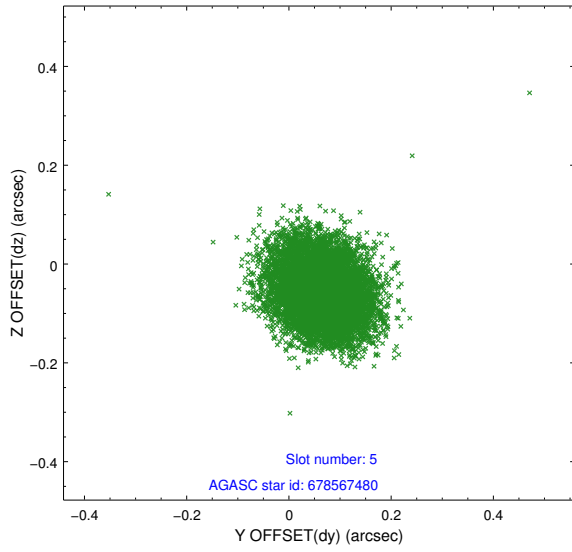
2.4.1 Slot 3



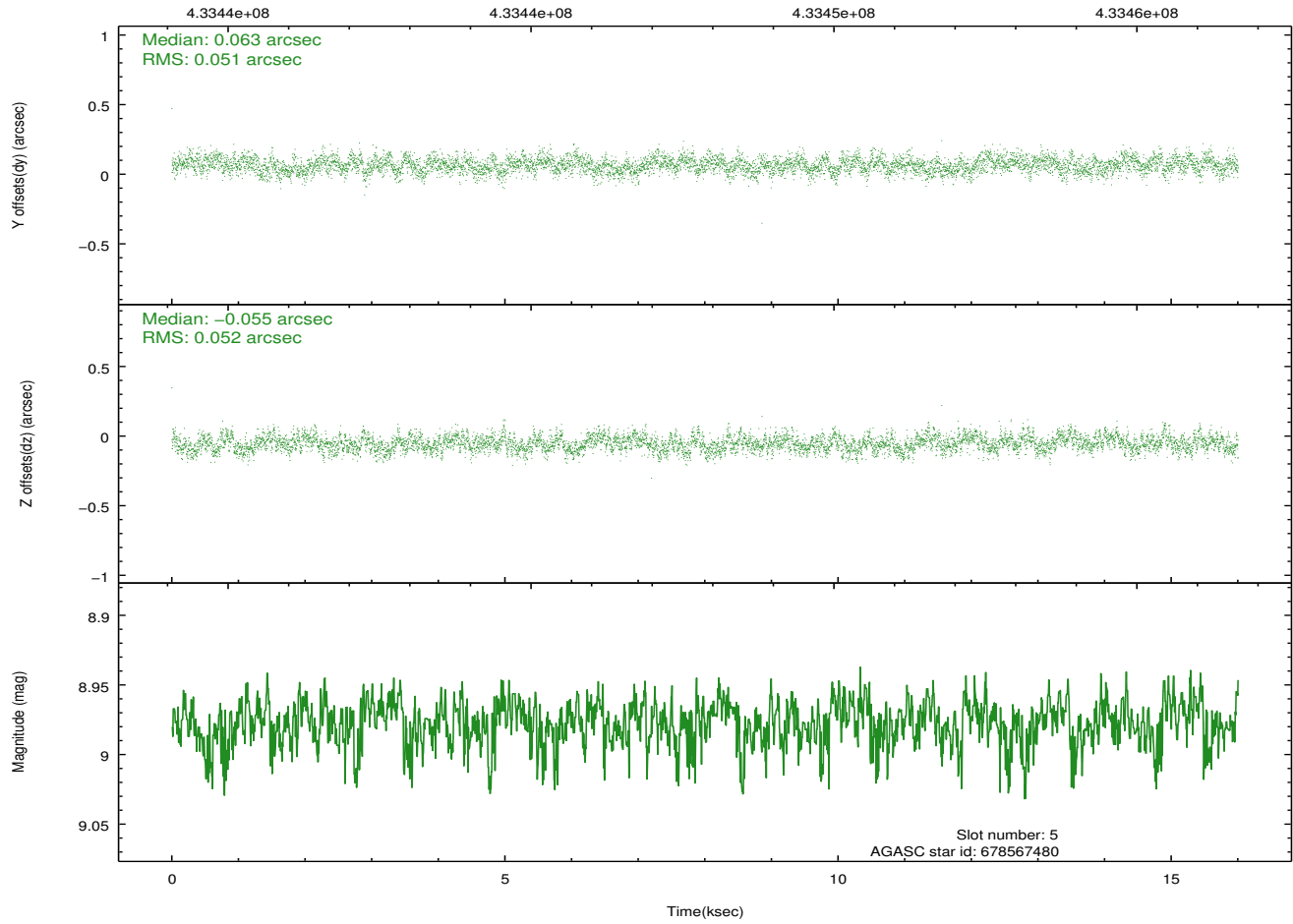
2.4.2 Slot 4



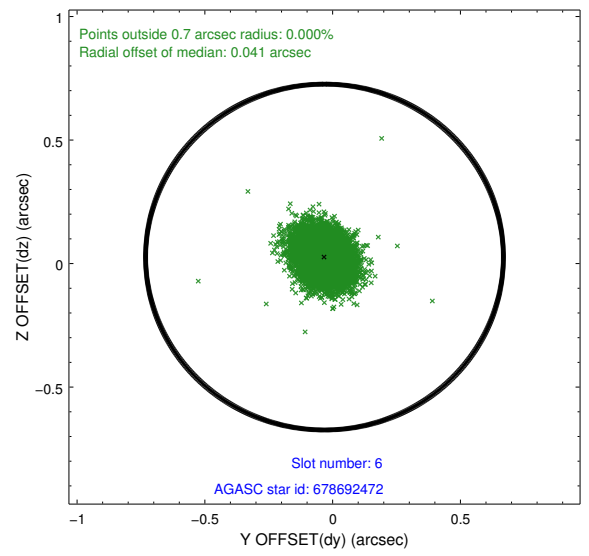
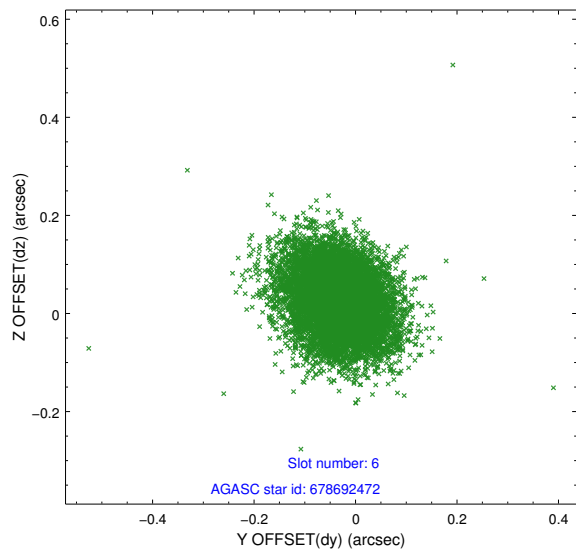
2.4.3 Slot 5



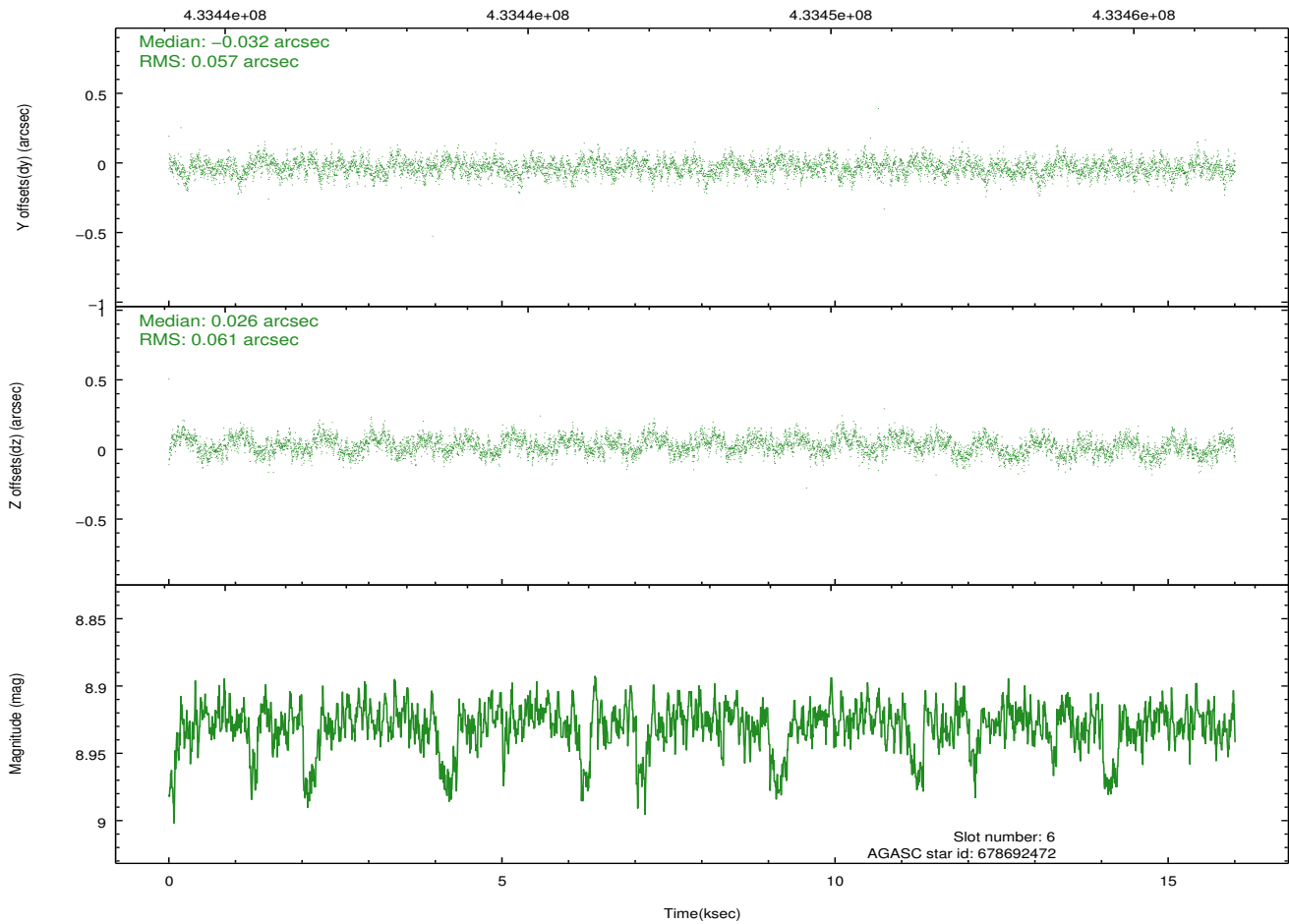
Time (s)



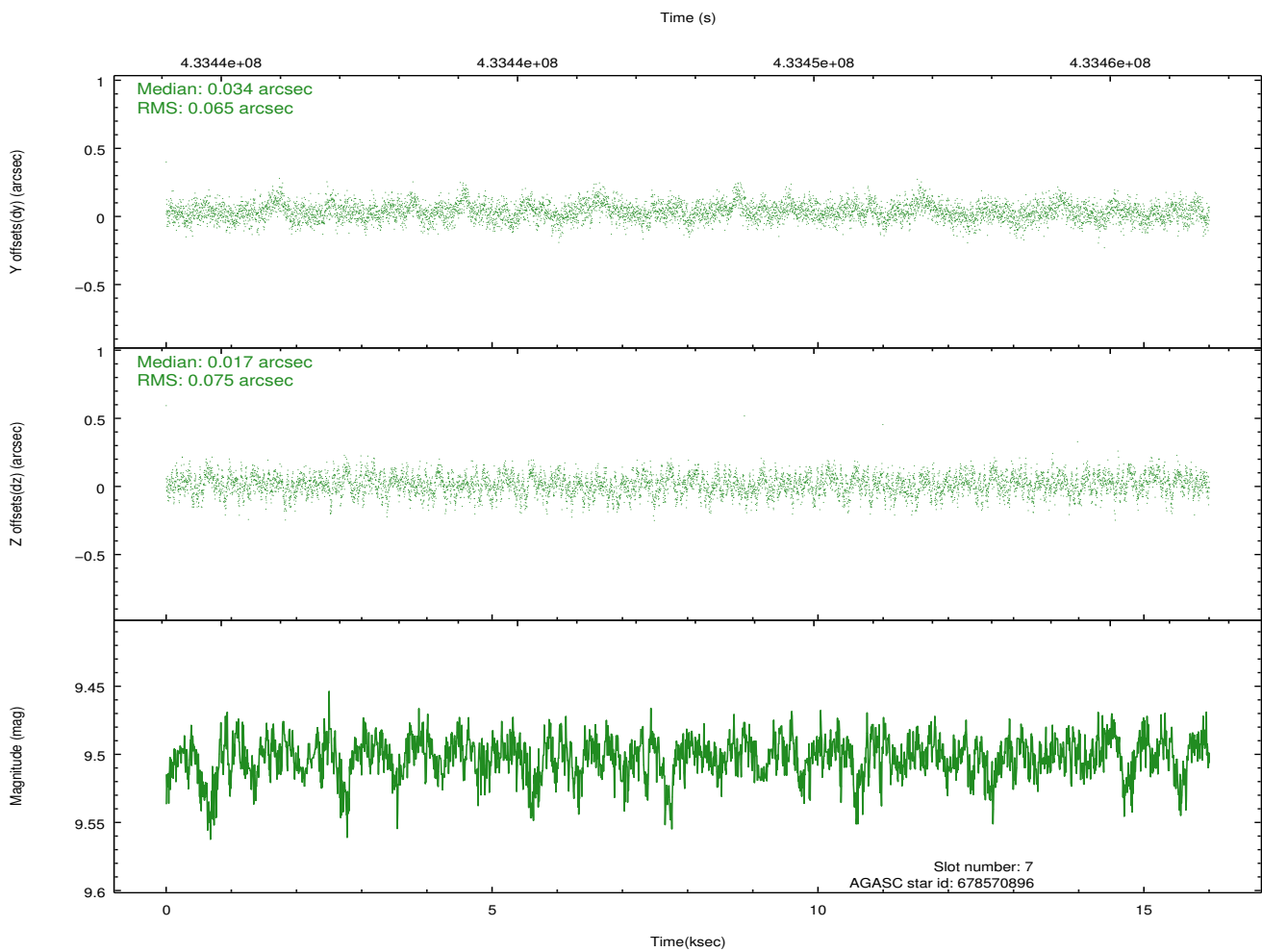
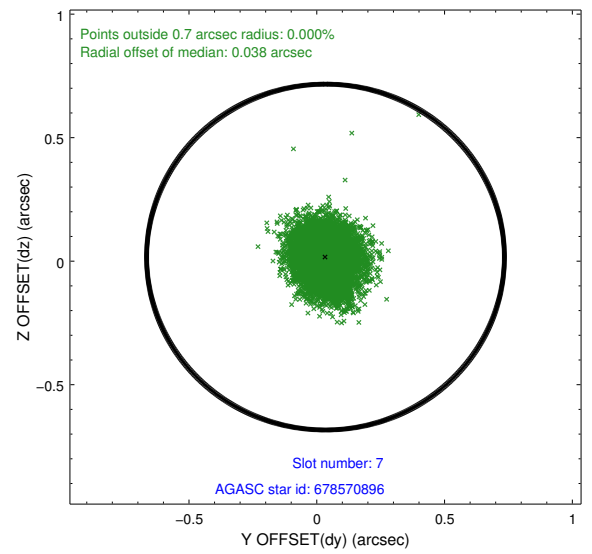
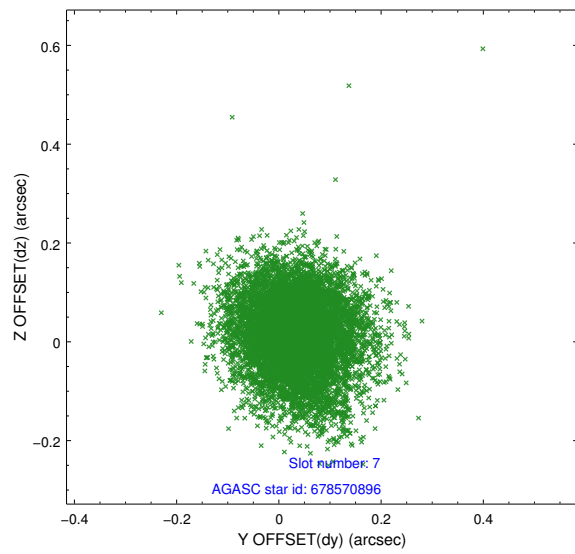
2.4.4 Slot 6



Time (s)

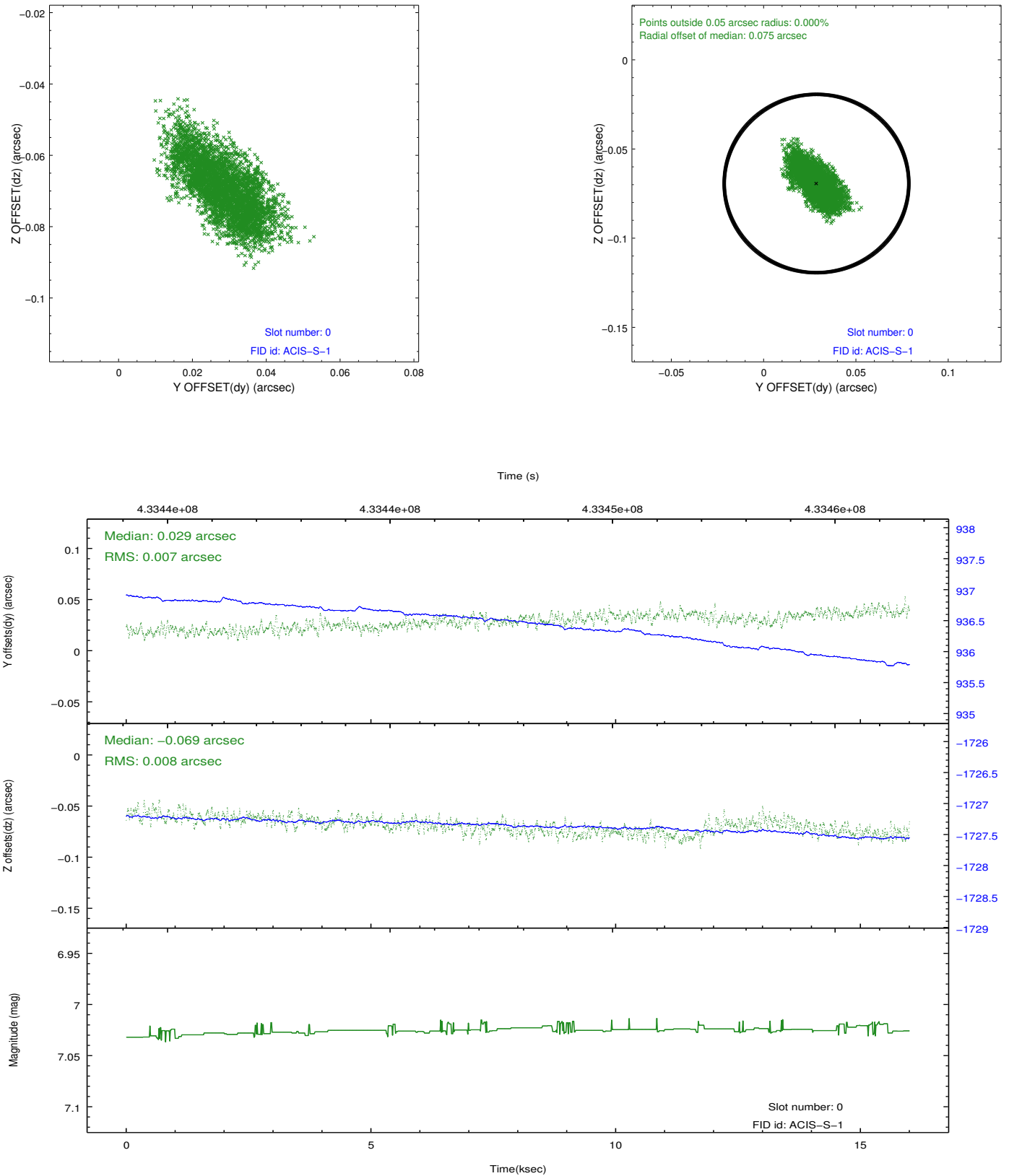


2.4.5 Slot 7

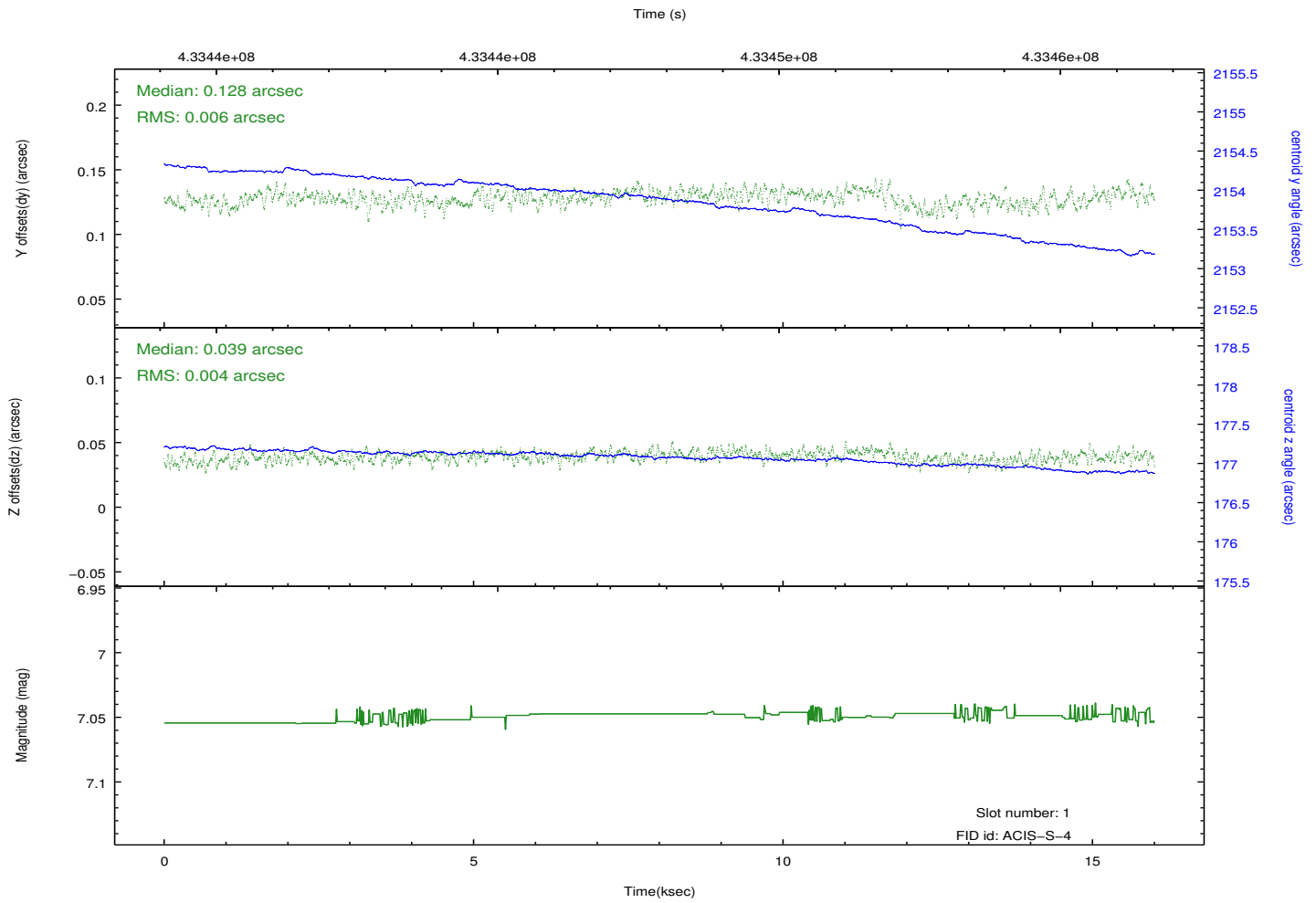
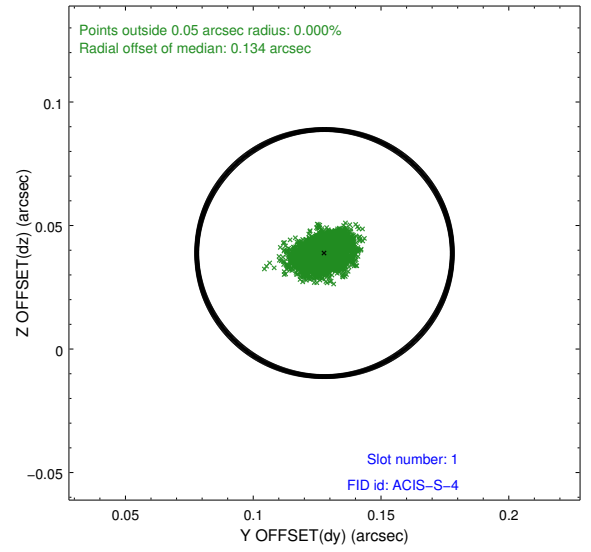
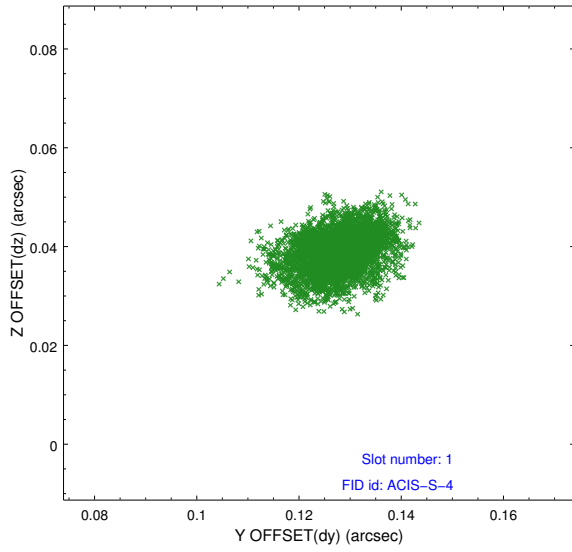


2.5 FID Slots

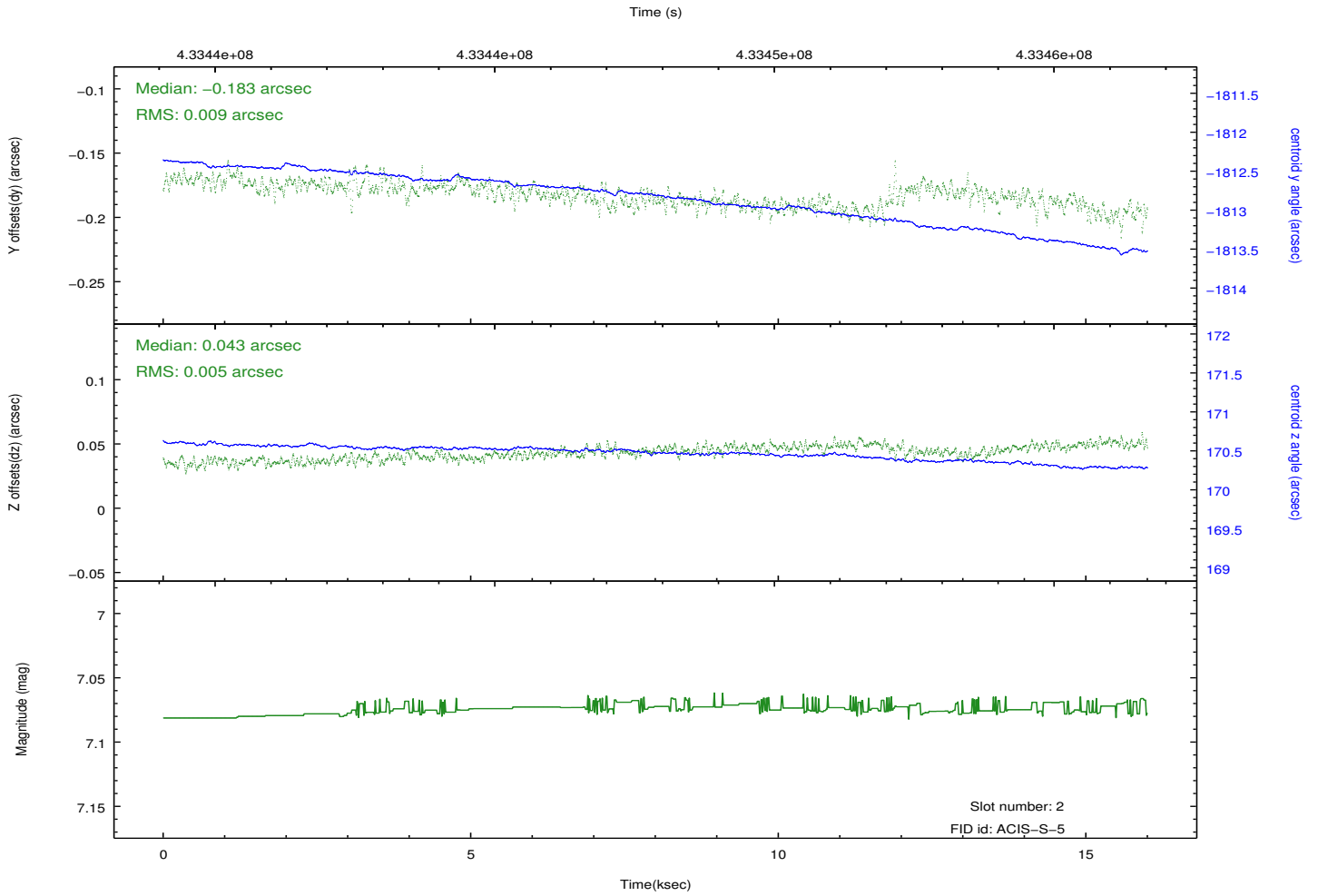
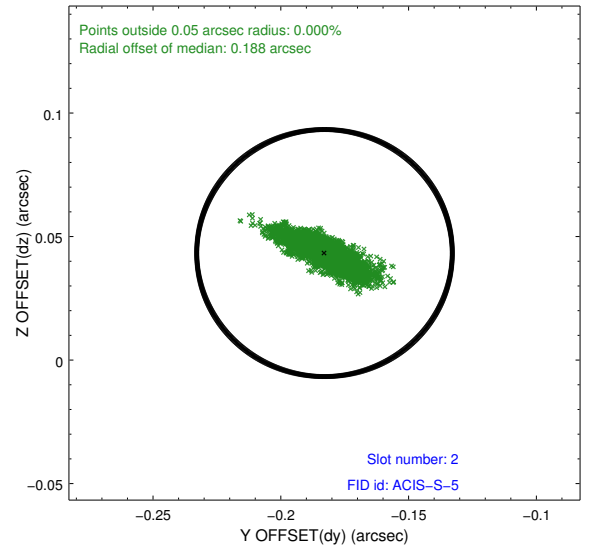
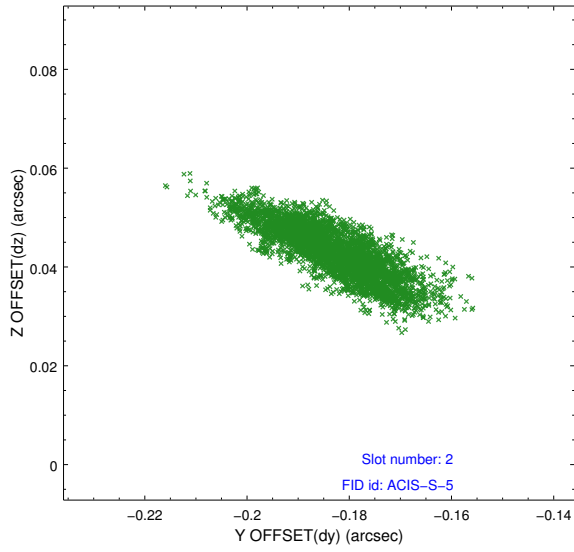
2.5.1 Slot 0



2.5.2 Slot 1



2.5.3 Slot 2



A Summary

A.1 Status

V&V Scientist	Jen Lauer
V&V Date (YYYY-MM-DD)	2012.02.23
V&V Edition	1
V&V Disposition and Status	OK
V&V Charge Time	15.046399944007

A.2 Comments

Joint proposal : HST