

V&V Reference Report

L2 ASCDS Version : 8.1.1

Observation 1471 - L2 Version 4
Chandra X-Ray Center

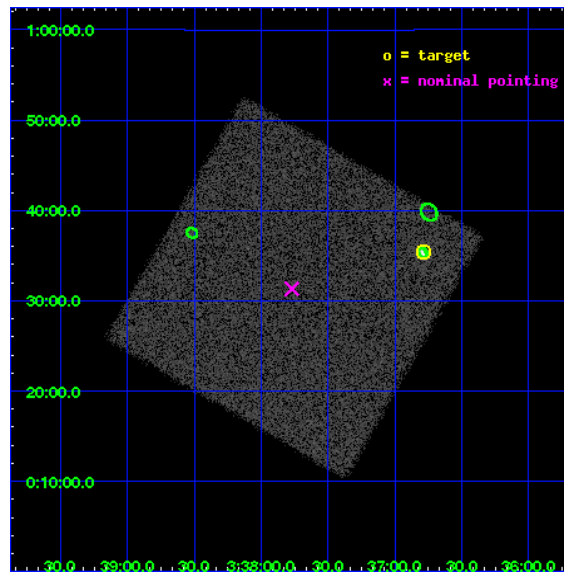
L2 Processing Date : Nov 24 2009

Contents

1	Front	2
2	OBI	3
2.1	OBI	3
2.1.1	Images	3
2.1.2	Parameters	4
2.1.3	Events	4
2.2	Compared Parameters	5
2.3	Aspect	6
2.4	Star Slots	9
2.4.1	Slot 3	9
2.4.2	Slot 4	10
2.4.3	Slot 5	11
2.4.4	Slot 6	12
2.5	FID Slots	13
2.5.1	Slot 0	13
2.5.2	Slot 1	14
2.5.3	Slot 2	15
3	Point Sources	16
A	Summary	17
A.1	Status	17
A.2	Comments	17

1 Front

seq_num	290047	Sequence number
obs_id	1471	Observation id
title	 	Proposal title
observer	Dr. CXC Calibration	Principal investigator
object	HR1099	Source name
ra_targ	54.197083	Observer's specified target RA
dec_targ	0.589972	Observer's specified target Dec
ra_nom	54.442726360236	Nominal RA
dec_nom	0.52200985641655	Nominal Dec
roll_nom	344.90199288521	Nominal Roll
revision	4	Processing version of data
ontime	2274.7313321978	[s]
livetime	2259.5923242819	Ontime multiplied by DTCOR
l2events	84215	Number of level 2 events

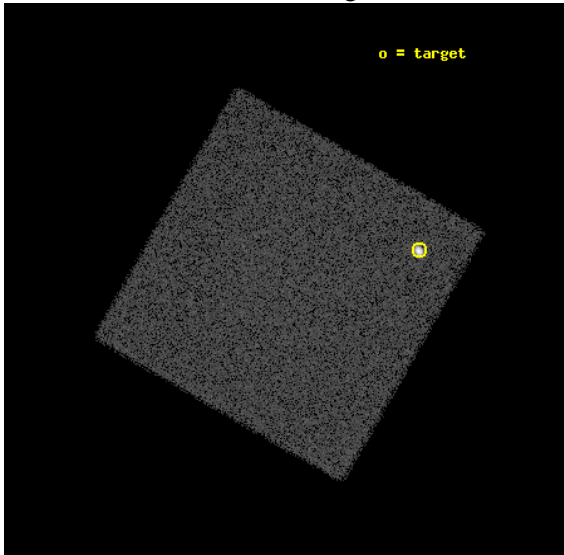


2 OBI

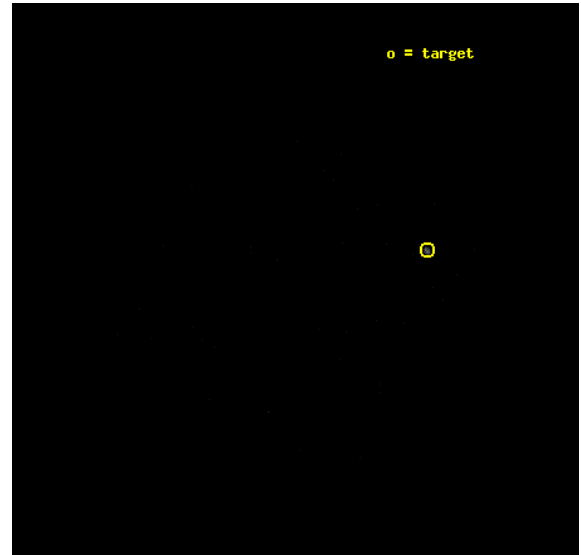
2.1 OBI

2.1.1 Images

Level 1 Image



Level 1 Bad Events



2.1.2 Parameters

obi_num	0	Obi number	sched_exp_time	2000.000000	Scheduled observation exposure time
ascdsver	8.1.1	Processing system revision	ontime	2274.7313321978	[s]
caldbver	4.1.4	 	l1events	122845	Number of level 1 events
date	2009-11-24T14:54:20	Date and time of file creation			
revision	4	Processing version of data			

2.1.3 Events

Level 1 Events

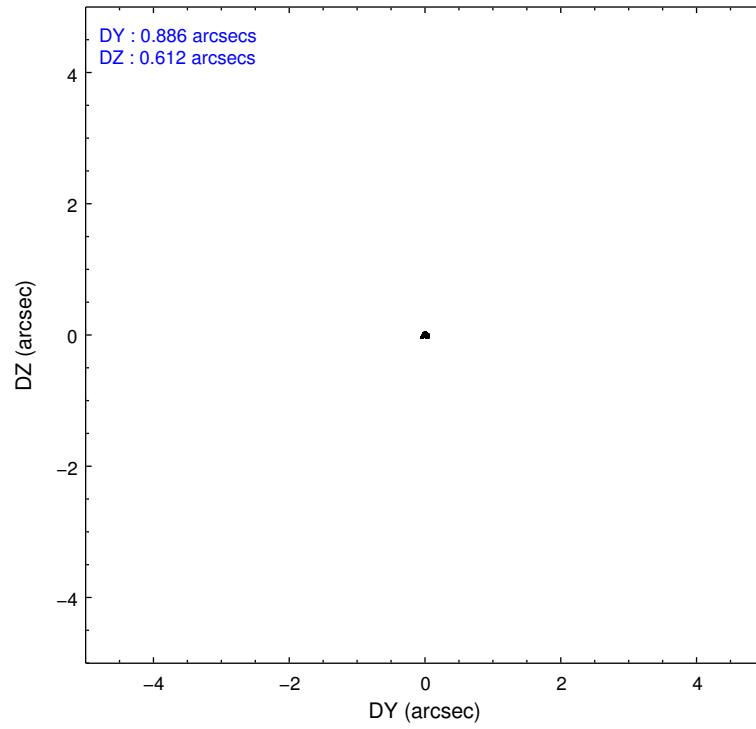
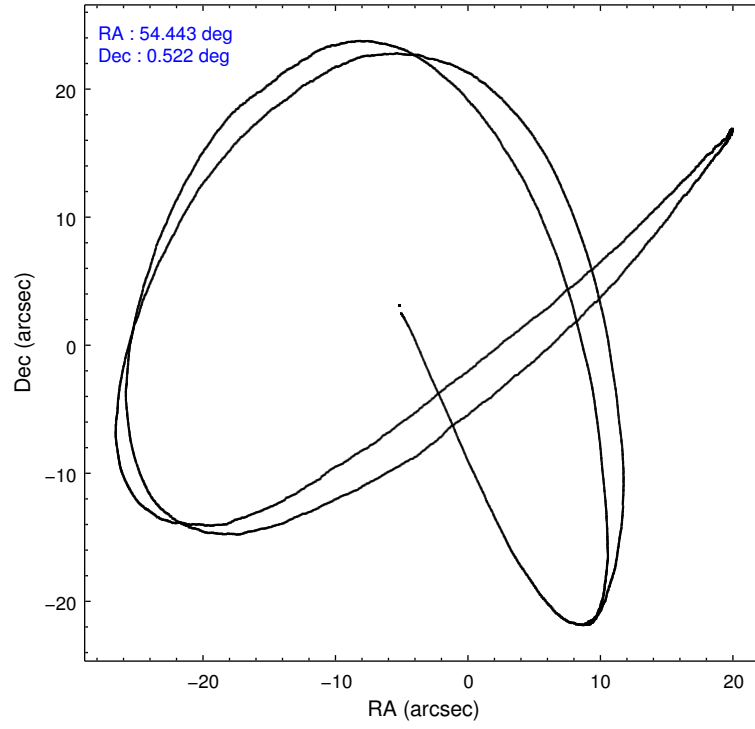
	segment 0
level 1 events	122845
rejected events	2621
rejected %	2%

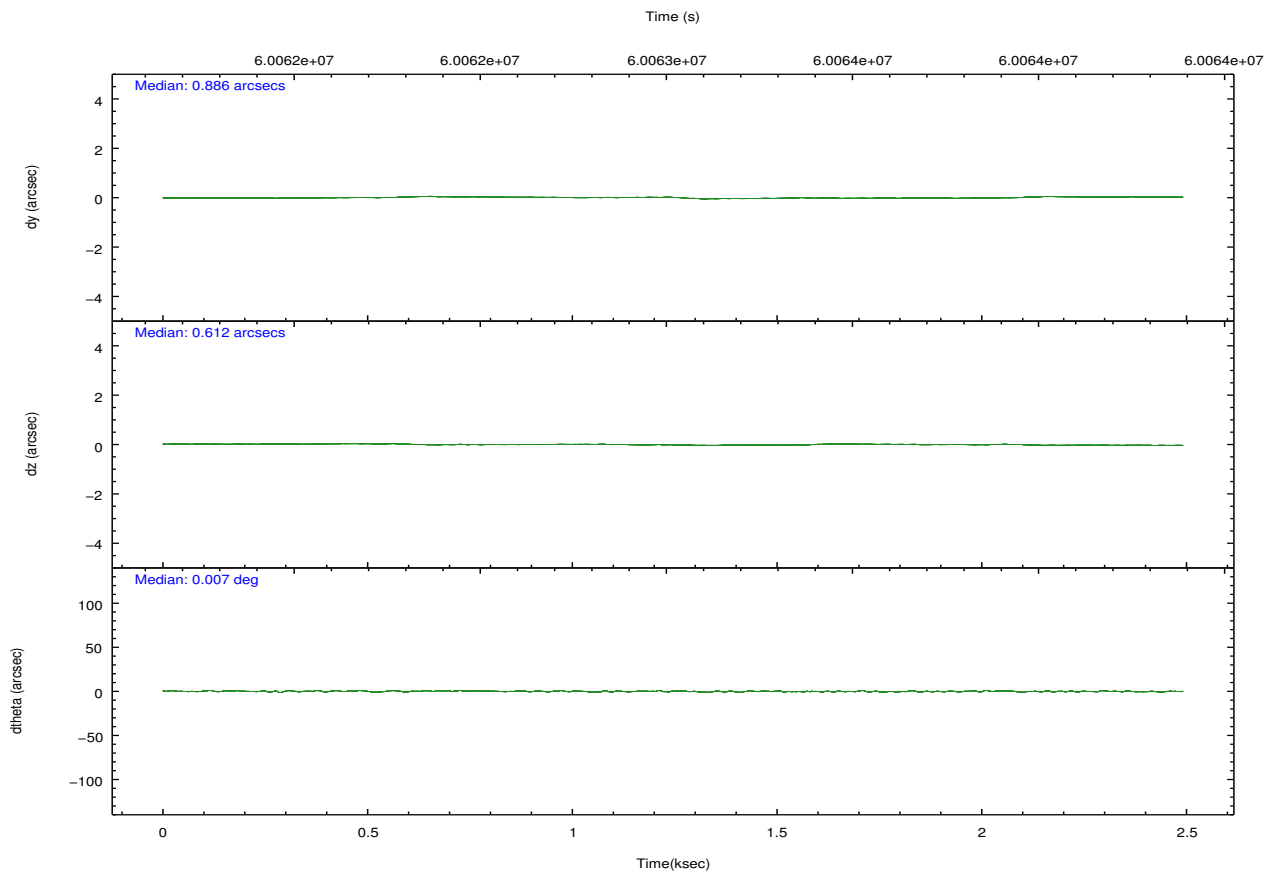
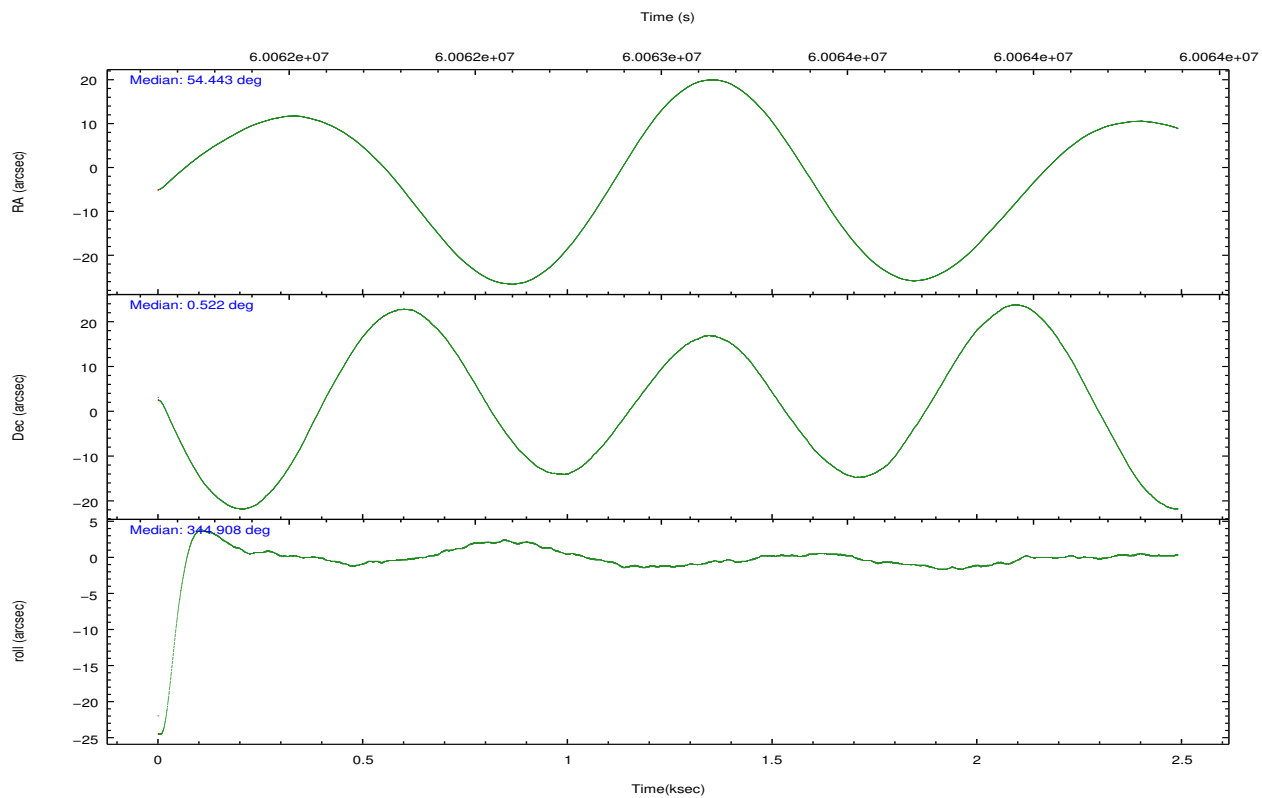
2.2 Compared Parameters

Parameter	Planned	Actual
Instrument	HRC	HRC
Detector	HRC-I	HRC-I
Grating	NONE	NONE
Data mode	OBSERVING	OBSERVING
Observation mode	POINTING	POINTING
Pointing RA	54.415843	54.44272636023589
Pointing Dec	0.515140	0.5220098564165535
Pointing Roll	344.997855	344.9019928852057
SIM focus pos (mm)	-1.040293	-1.038866356238299
SIM defocus (mm)	0	0.001426264420575141
SIM translation stage pos (mm)	126.985494	126.9854943052878
SIM translation stage offset (mm)	0	-5.413686238853188e-06
Observation start time	60062264.184000	60061472.863906
Observation start date	1999-11-27T03:56:40	1999-11-27T03:44:32
Observation end time	60064264.184000	60064529.414016
Observation end date	1999-11-27T04:30:00	1999-11-27T04:35:29

Parameter	Planned	Actual
Obspar format version number	6	6
Obspar file type	PREDICTED	ACTUAL
Obspar update status	NONE	UPDATED

2.3 Aspect



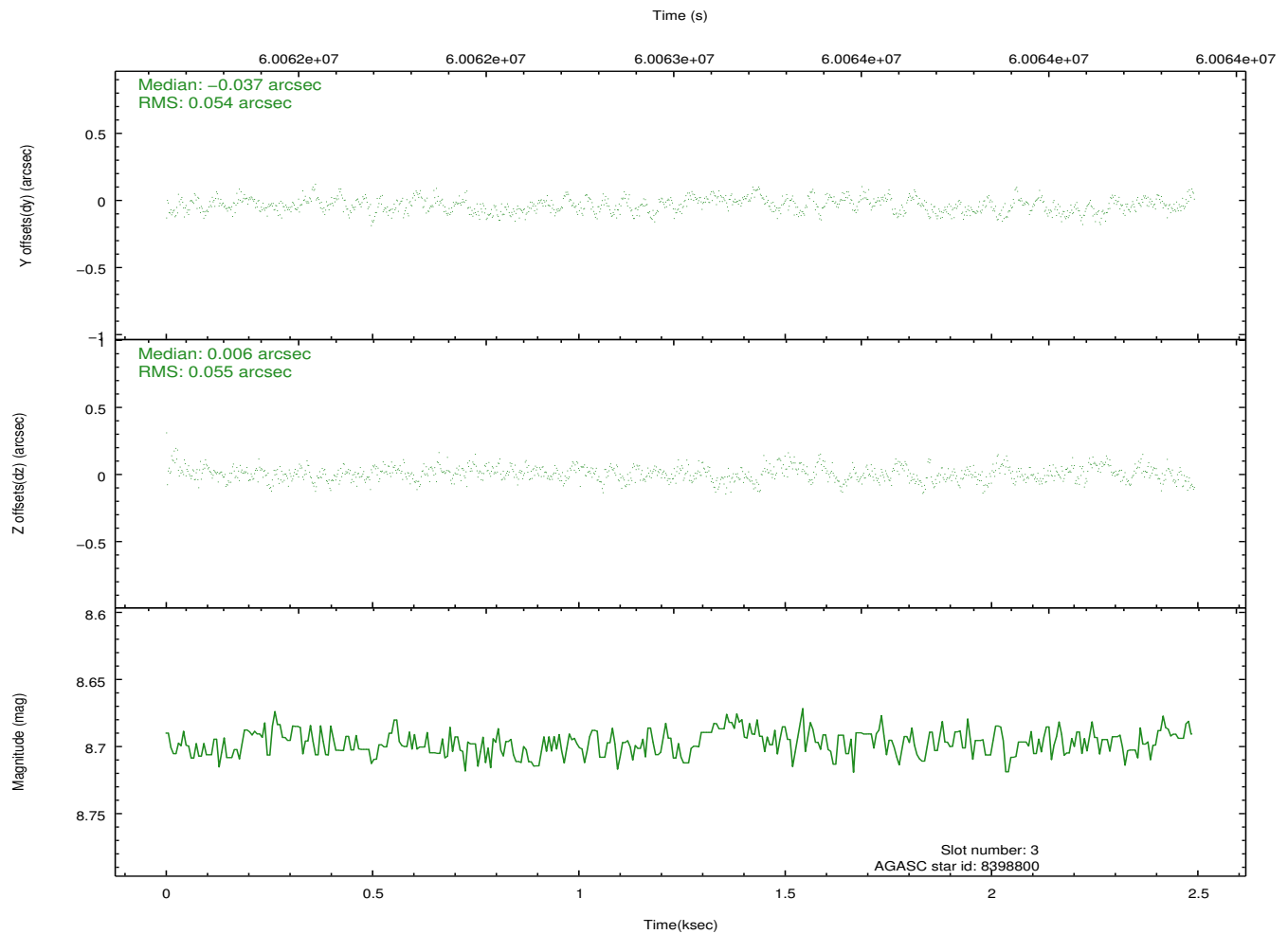
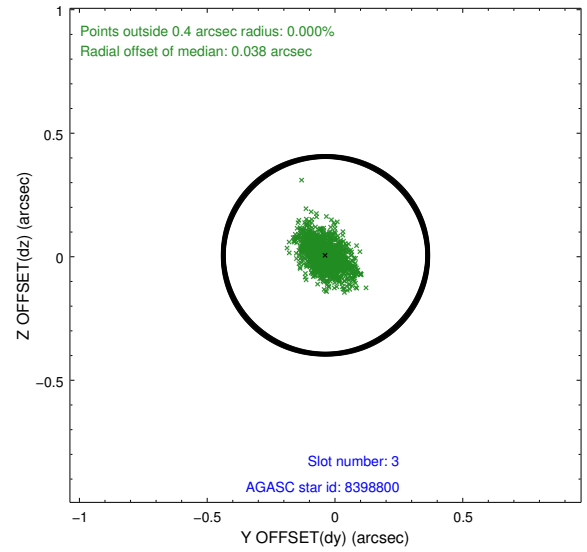
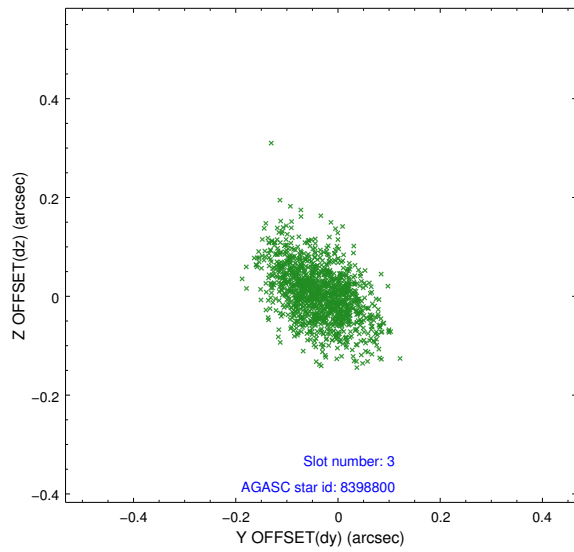


Slot Statistics

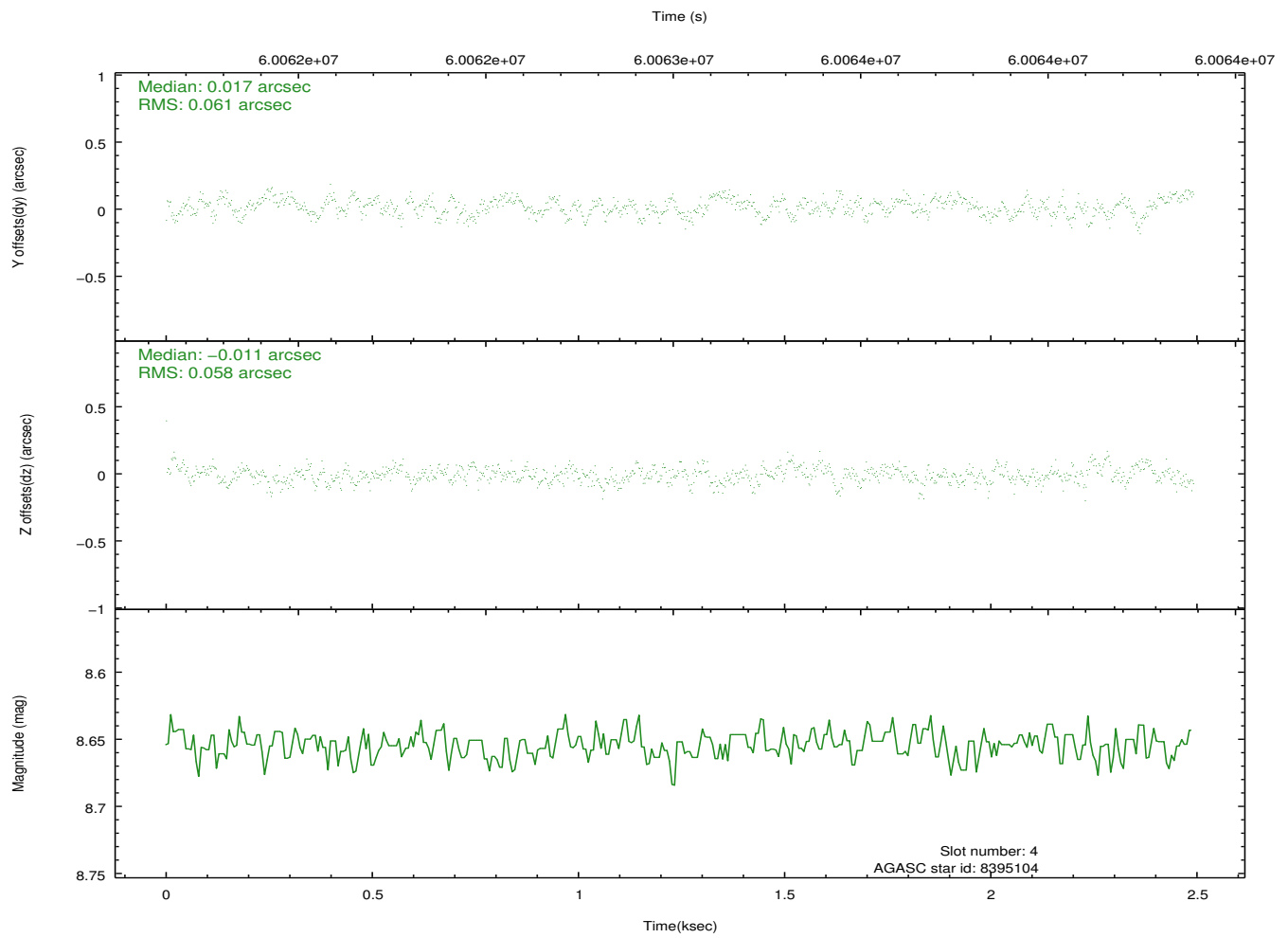
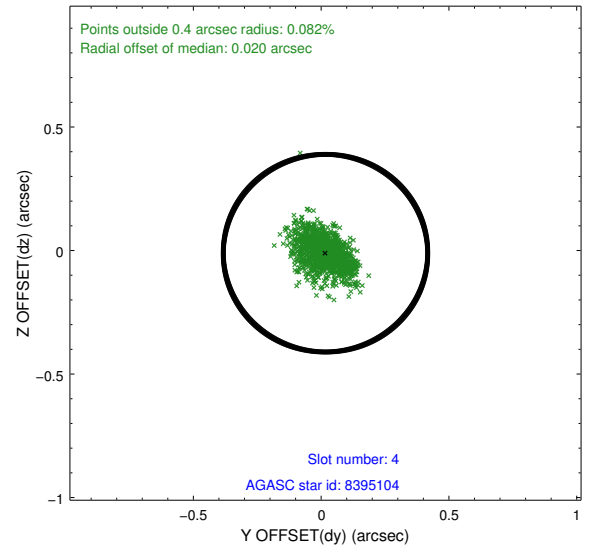
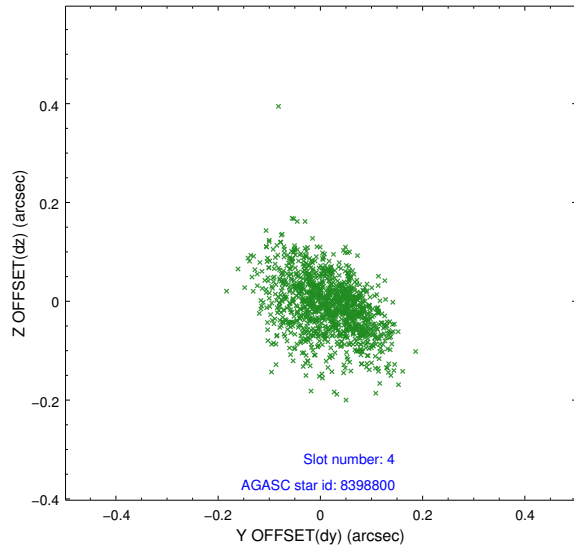
slot	status	id	mag	n_pts	med_dy	med_dz	dr1	dr2	ra	dec	mean_y	mean_z
0	FID	HRC-I-1	6.98	1216	-0.003	-0.034	0.006	0.011	0.000000	0.000000	-756.27	-1288.38
1	FID	HRC-I-3	7.06	1216	0.044	-0.063	0.007	0.012	0.000000	0.000000	-1185.40	1015.08
2	FID	HRC-I-4	7.00	1216	0.073	0.008	0.005	0.009	0.000000	0.000000	1285.55	1014.72
3	GUIDE	8398800	8.70	1216	-0.037	0.006	0.079	0.138	54.242352	0.922024	-983.51	1253.72
4	GUIDE	8395104	8.65	1214	0.017	-0.011	0.087	0.145	54.744893	0.796520	879.99	1286.45
5	GUIDE	8395504	9.76	1215	0.034	0.016	0.105	0.175	54.466573	0.973564	-251.11	1642.85
6	GUIDE	8399352	9.94	1214	-0.022	-0.012	0.147	0.257	53.946831	1.204693	-2274.45	1962.95
7	UNUSED		0.00	0	0.000	0.000	0.000	0.000	0.000000	0.000000	0.00	0.00

2.4 Star Slots

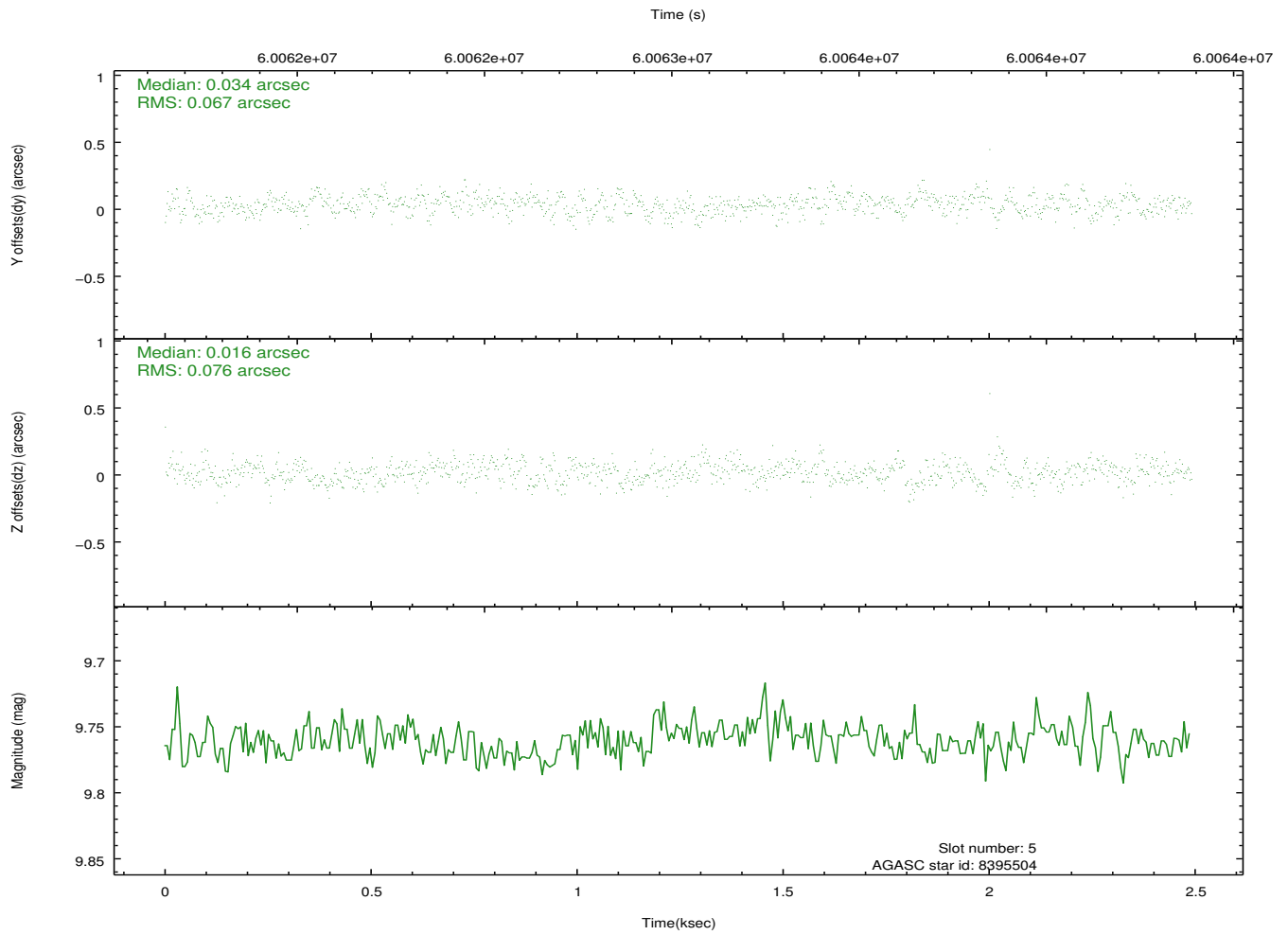
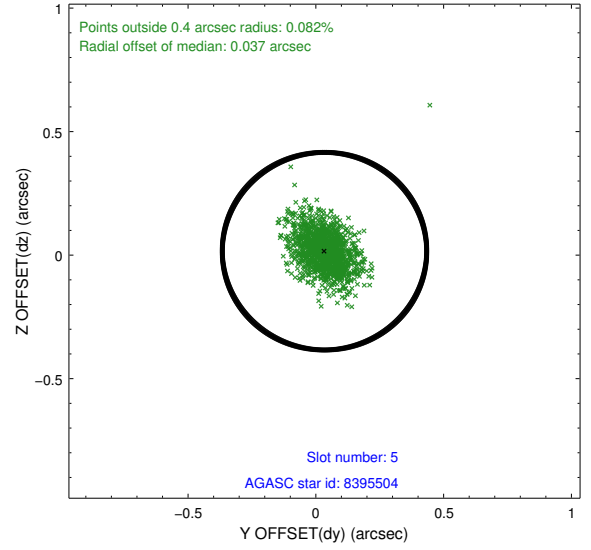
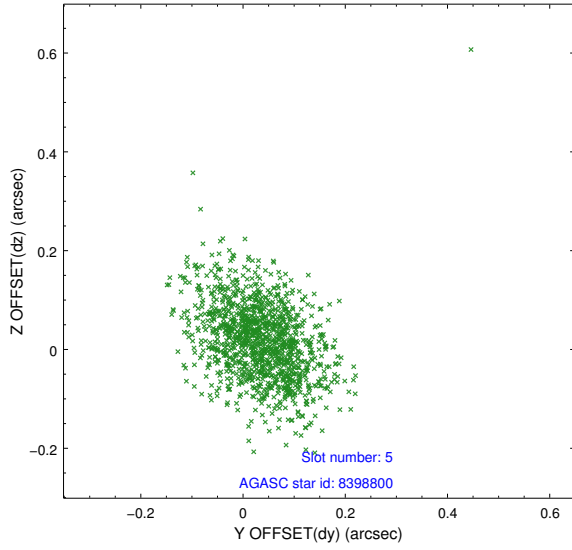
2.4.1 Slot 3



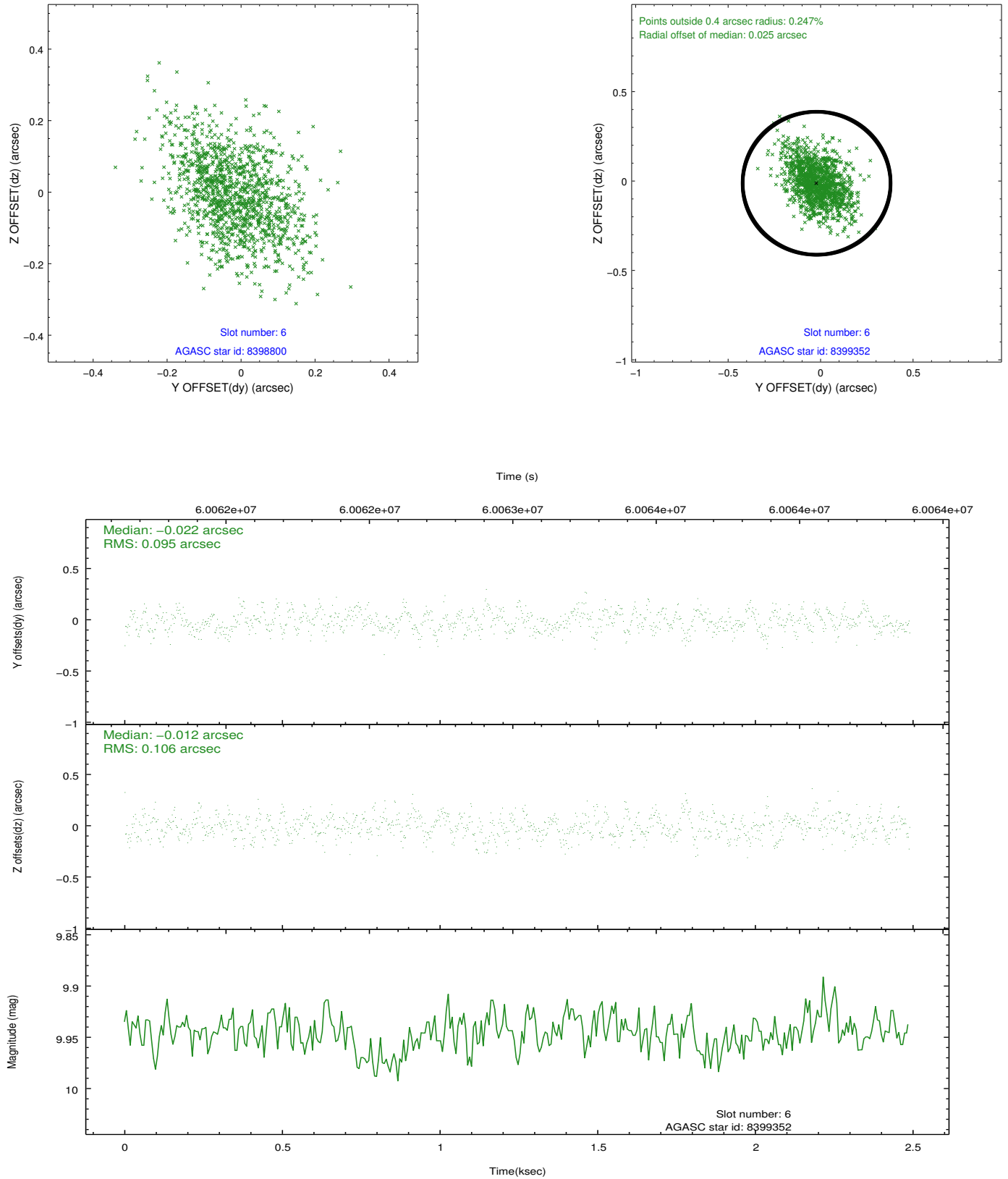
2.4.2 Slot 4



2.4.3 Slot 5

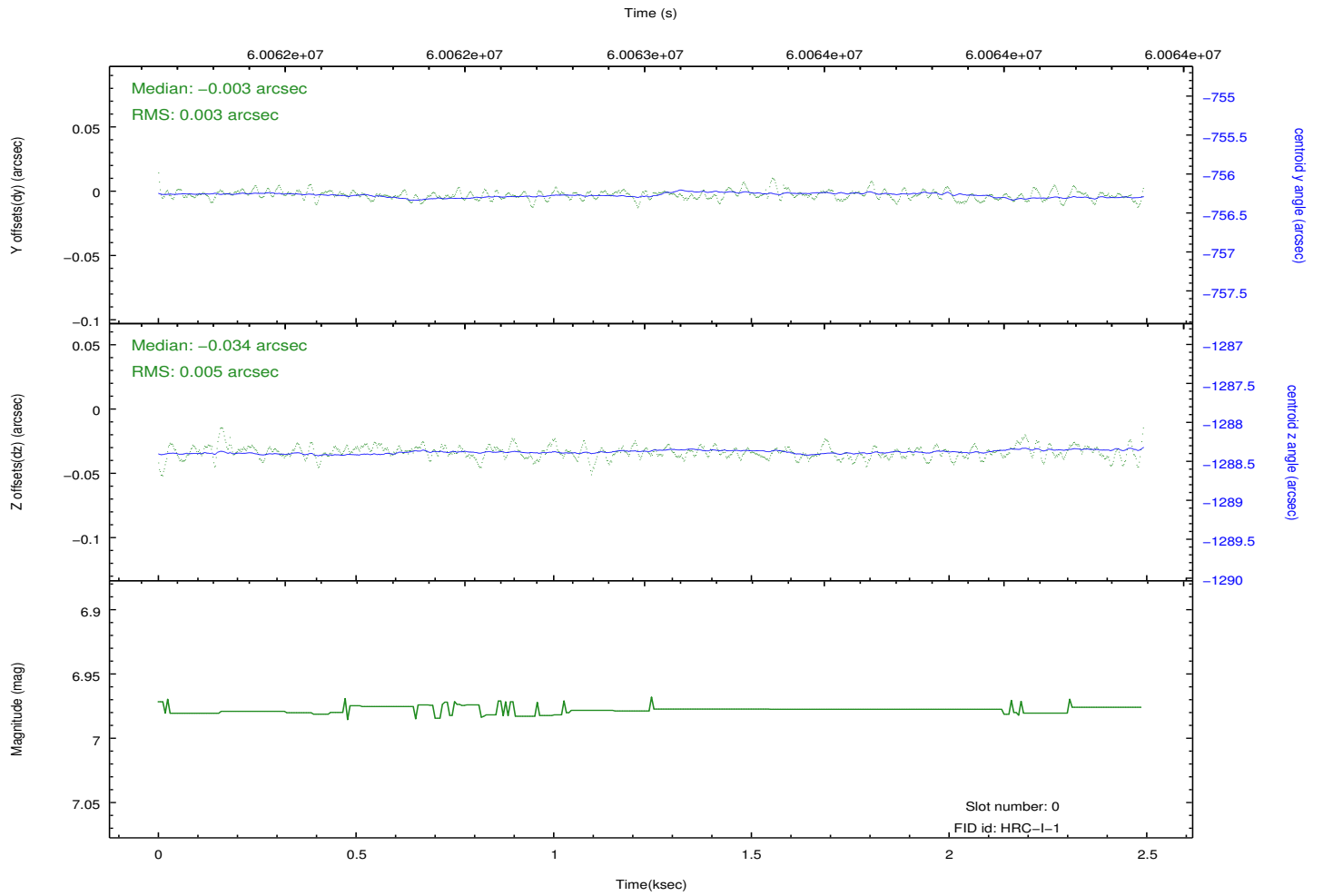
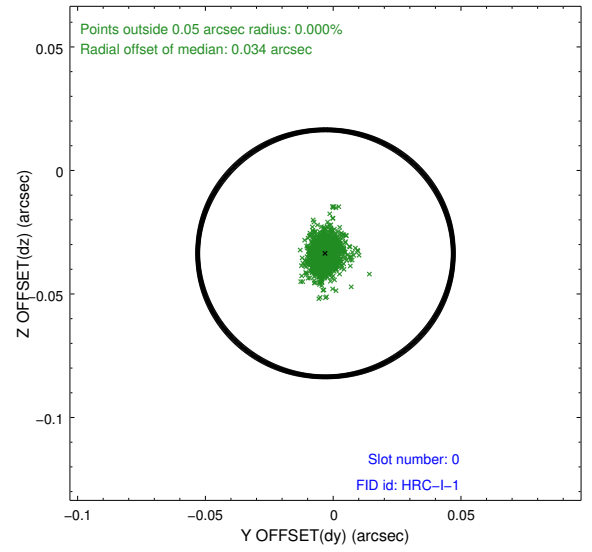
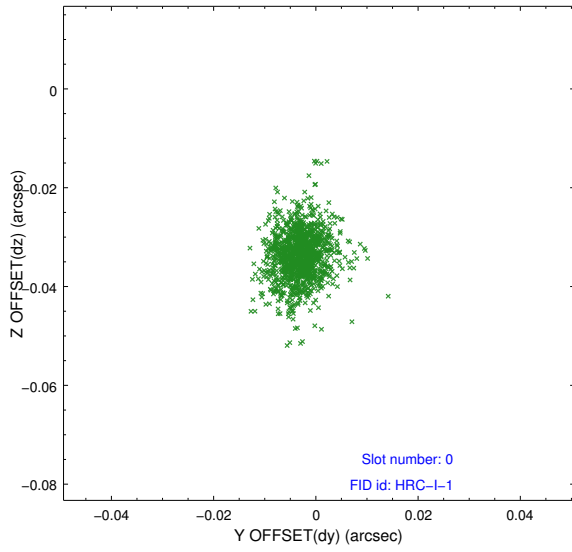


2.4.4 Slot 6

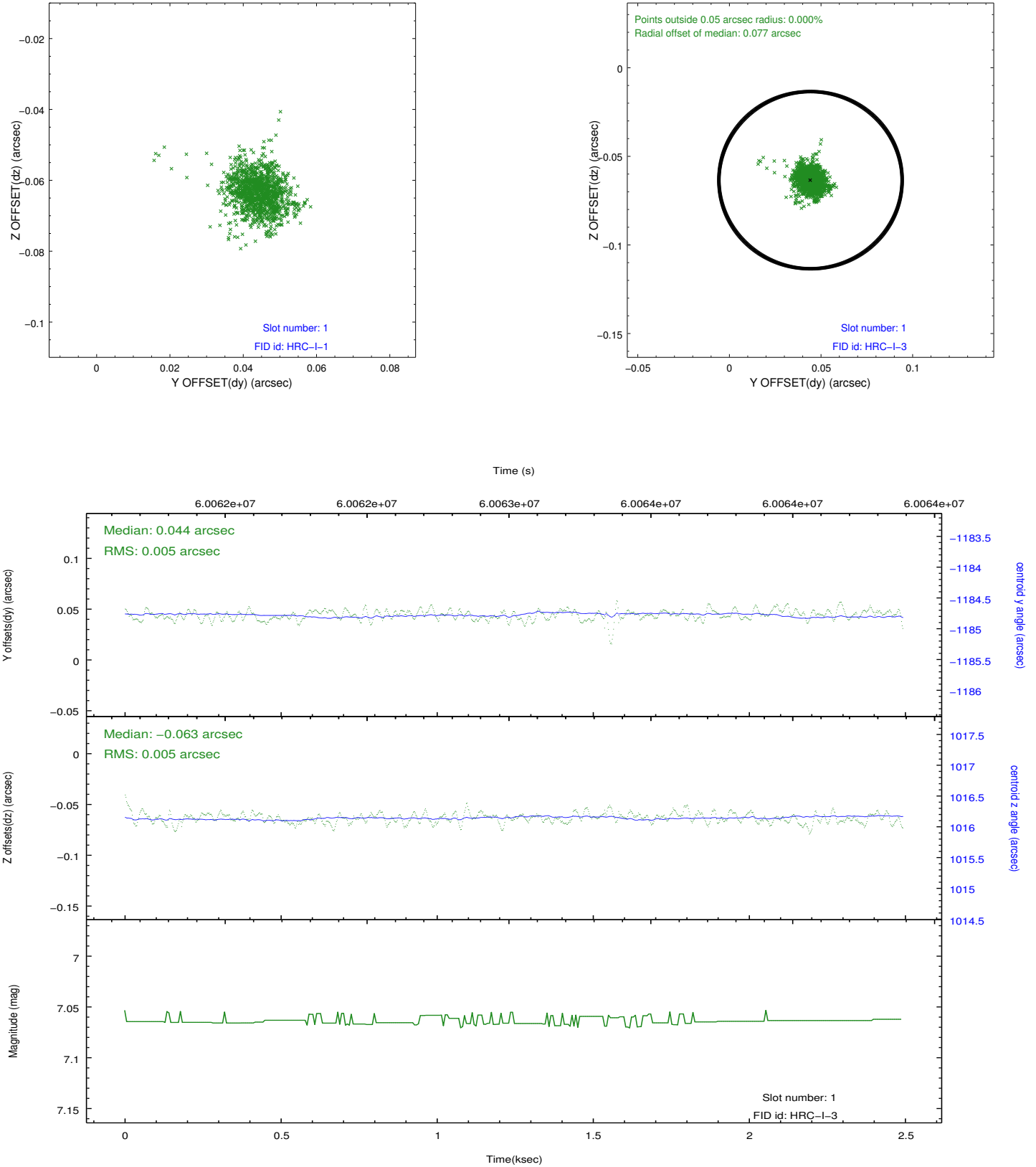


2.5 FID Slots

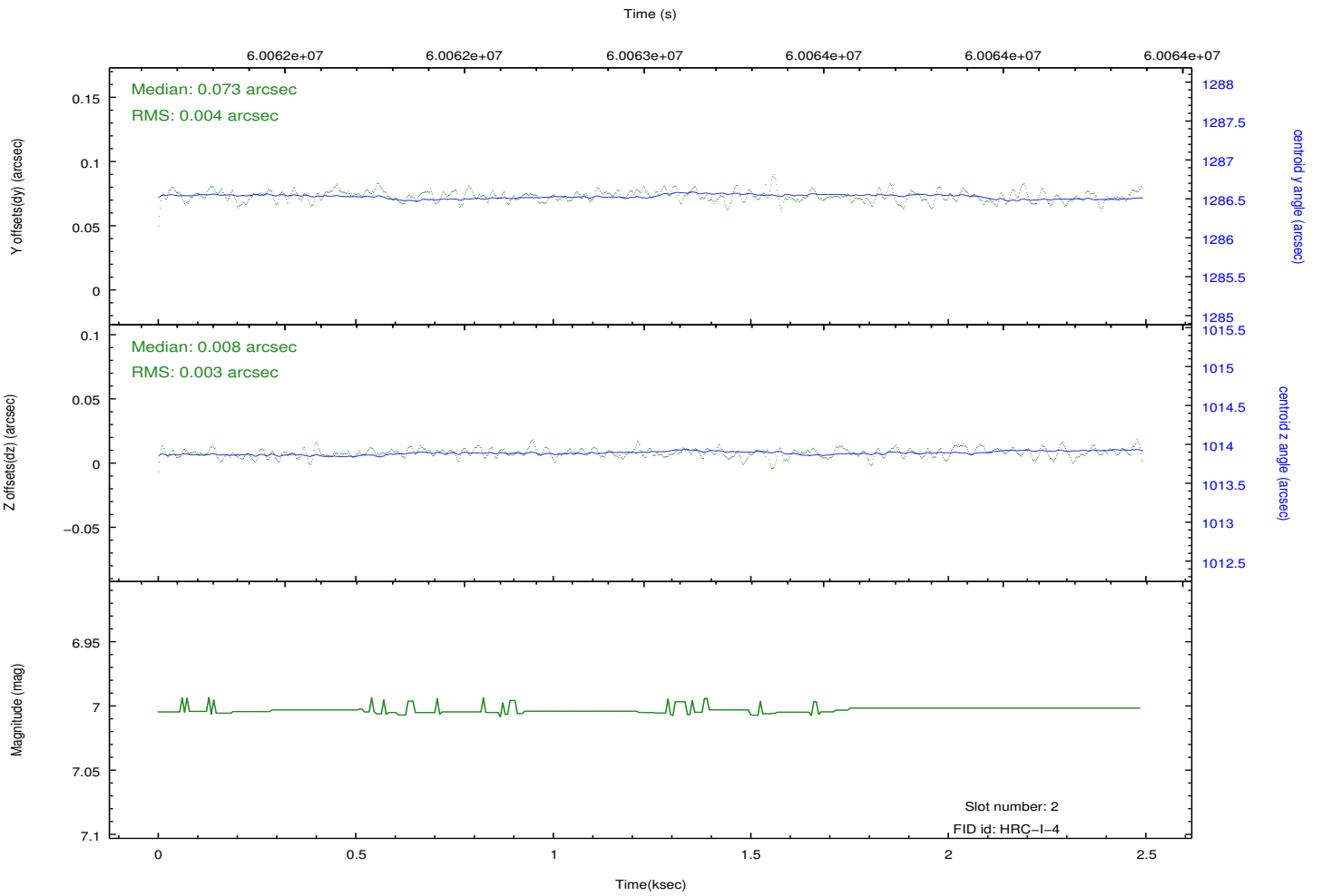
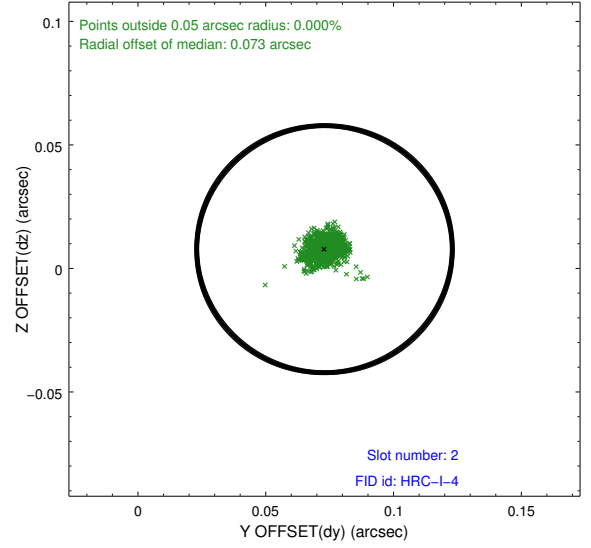
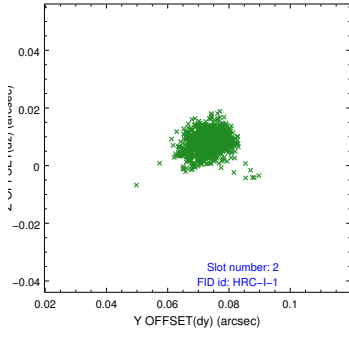
2.5.1 Slot 0



2.5.2 Slot 1



2.5.3 Slot 2



3 Point Sources

17.58 arcmin



A Summary

A.1 Status

V&V Scientist	Joy Nichols
V&V Date (YYYY-MM-DD)	2009.12.02
V&V Edition	1
V&V Disposition and Status	OK
V&V Charge Time	2.274

A.2 Comments

HRC-I point spread function calibration. Target is off-axis.