

V&V Reference Report

L2 ASCDS Version : 10

Observation 15181 - L2 Version 1
Chandra X-Ray Center

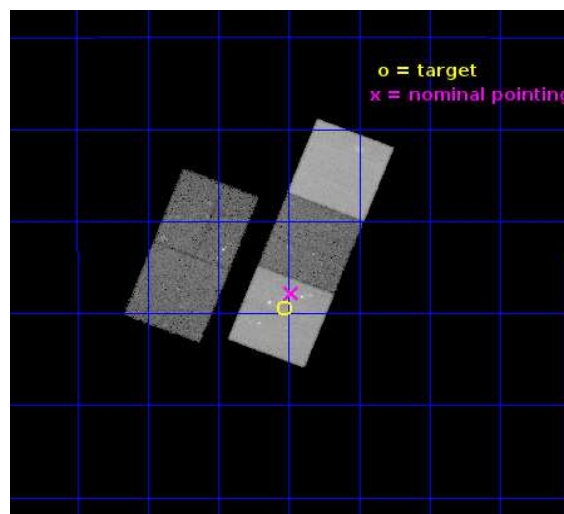
L2 Processing Date : Jul 17 2013

Contents

1	Front	2
2	OBI	3
2.1	OBI	3
2.1.1	Images	3
2.1.2	Bias	3
2.1.3	Parameters	4
2.1.4	Events	4
2.2	Compared Parameters	5
2.3	Aspect	6
2.4	Star Slots	9
2.4.1	Slot 3	9
2.4.2	Slot 4	10
2.4.3	Slot 5	11
2.4.4	Slot 6	12
2.4.5	Slot 7	13
2.5	FID Slots	14
2.5.1	Slot 0	14
2.5.2	Slot 1	15
2.5.3	Slot 2	16
A	Summary	17
A.1	Status	17
A.2	Comments	17

1 Front

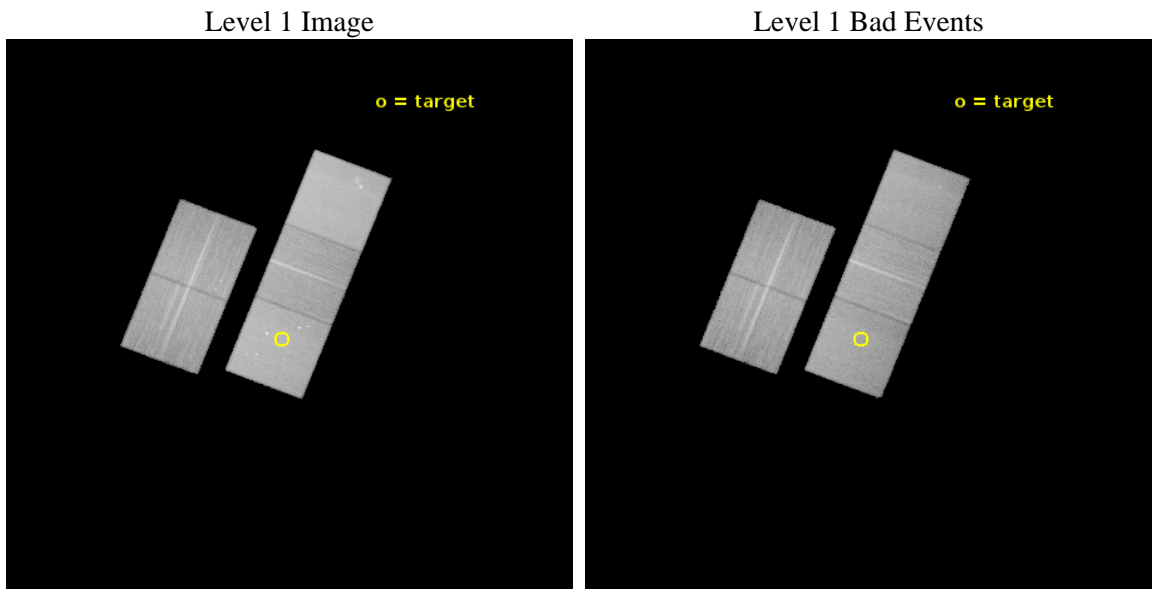
seq_num	801306	Sequence number
obs_id	15181	Observation id
title	Hot gas in spiral-dominated groups: does HGC 16 have a halo?	Propo
observer	Dr. Jan Vrtilik	Principal investigator
object	HGC 16	Source name
dtcycle	0	
cycle	P	events from which exps? Prim/Second/Both
ra_targ	32.383333	Observer's specified target RA [deg]
dec_targ	-10.156667	Observer's specified target Dec [deg]
ra_nom	32.370221011002	Nominal RA [deg]
dec_nom	-10.130445681514	Nominal Dec [deg]
roll_nom	111.35432096671	Nominal Roll [deg]
revision	1	Processing version of data
ontime	50111.278133929	Sum of GTIs [s]
livetime	49456.537393723	Livetime [s]
ontime2	50107.972973645	Sum of GTIs [s]
ontime3	50108.014033556	Sum of GTIs [s]
ontime5	50111.237093925	Sum of GTIs [s]
ontime6	50111.196053922	Sum of GTIs [s]
ontime7	50111.278133929	Sum of GTIs [s]
l2events	384155	Number of level 2 events



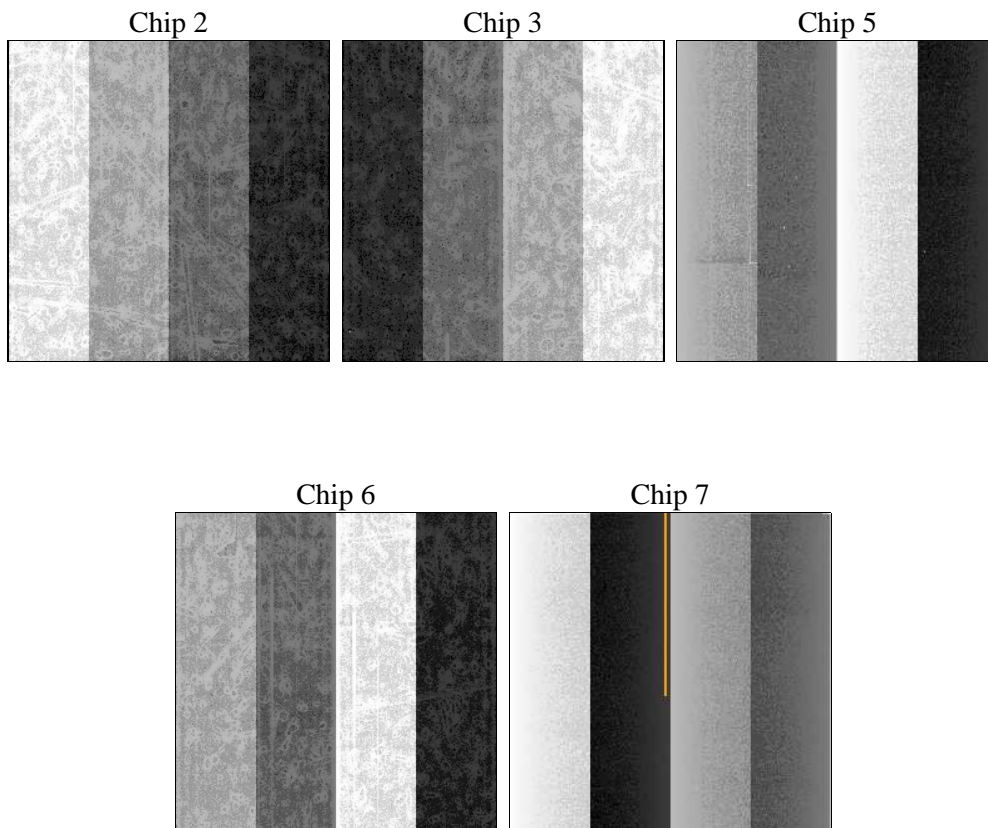
2 OBI

2.1 OBI

2.1.1 Images



2.1.2 Bias



2.1.3 Parameters

obi_num	0	Obi number	sched_exp_time	50000.000000	[s] Scheduled observation exposure time
ascdsver	10	Processing system revision	ontime	50111.278133929	Sum of GTIs [s]
caldbver	4.5.7	 	ontime2	50107.972973645	Sum of GTIs [s]
date	2013-07-17T13:10:38	Date and time of file creation	ontime3	50108.014033556	Sum of GTIs [s]
revision	1	Processing version of data	ontime5	50111.237093925	Sum of GTIs [s]
			ontime6	50111.196053922	Sum of GTIs [s]
			ontime7	50111.278133929	Sum of GTIs [s]
			l1events	1363928	Number of level 1 events

2.1.4 Events

	ccd 2	ccd 3	ccd 5	ccd 6	ccd 7
level 1 events	223295	215393	376358	231956	316926
rejected events	196423	190287	195957	203721	175164
rejected %	87%	88%	52%	87%	55%

	ccd 2	ccd 3	ccd 5	ccd 6	ccd 7
grade 0 events	10064	8589	12125	9478	13849
	4%	3%	3%	4%	4%
grade 1 events	121	125	761	106	352
	0%	0%	0%	0%	0%
grade 2 events	6459	5591	55076	6407	29446
	2%	2%	14%	2%	9%
grade 3 events	2596	2771	6957	2940	11983
	1%	1%	1%	1%	3%
grade 4 events	2754	2750	6934	2897	12002
	1%	1%	1%	1%	3%
grade 5 events	9765	12206	29257	12346	32479
	4%	5%	7%	5%	10%
grade 6 events	4999	5405	99313	6515	74491
	2%	2%	26%	2%	23%
grade 7 events	186537	177956	165935	191267	142324
	83%	82%	44%	82%	44%

2.2 Compared Parameters

Parameter	Planned	Actual	Parameter	Planned	Actual
Instrument	ACIS	ACIS	Obspar format version number	7	7
Detector	ACIS-23567	ACIS-23567	Obspar file type	PREDICTED	ACTUAL
Grating	NONE	NONE	Obspar update status	NONE	UPDATED
Data mode	VFAINT	VFAINT	CCD I0 on	N	N
Observation mode	POINTING	POINTING	CCD I1 on	N	N
[deg] Pointing RA	32.392143	32.37022101100192	CCD I2 on	O1	Y
[deg] Pointing Dec	-10.147220	-10.13044568151418	CCD I3 on	Y	Y
[deg] Pointing Roll	111.201552	111.3543209667139	CCD S0 on	N	N
[mm] SIM focus pos	-0.684267	-0.6828225247311905	CCD S1 on	Y	Y
[mm] SIM defocus	0	0.001444936568705701	CCD S2 on	Y	Y
[mm] SIM translation stage pos	-190.132523	-190.1400660498719	CCD S3 on	Y	Y
[mm] SIM translation stage offset	0	0.00754346686406393	CCD S4 on	N	N
[s] Observation start time (MET)	490339125.184000	490337379.92148	CCD S5 on	N	N
Observation start date	2013-07-16T05:17:38	2013-07-16T04:49:39	Number of optional ACIS chips dropped	0	0
[s] Observation end time (MET)	490389125.184000	490390086.96188	On-chip summing requested	N	N
Observation end date	2013-07-16T19:10:58	2013-07-16T19:28:06	Subarray requested	NONE	NONE
Read mode	TIMED	TIMED	Alternating exposures requested	N	N
			[s] Primary exposure time	0.000000	3.1

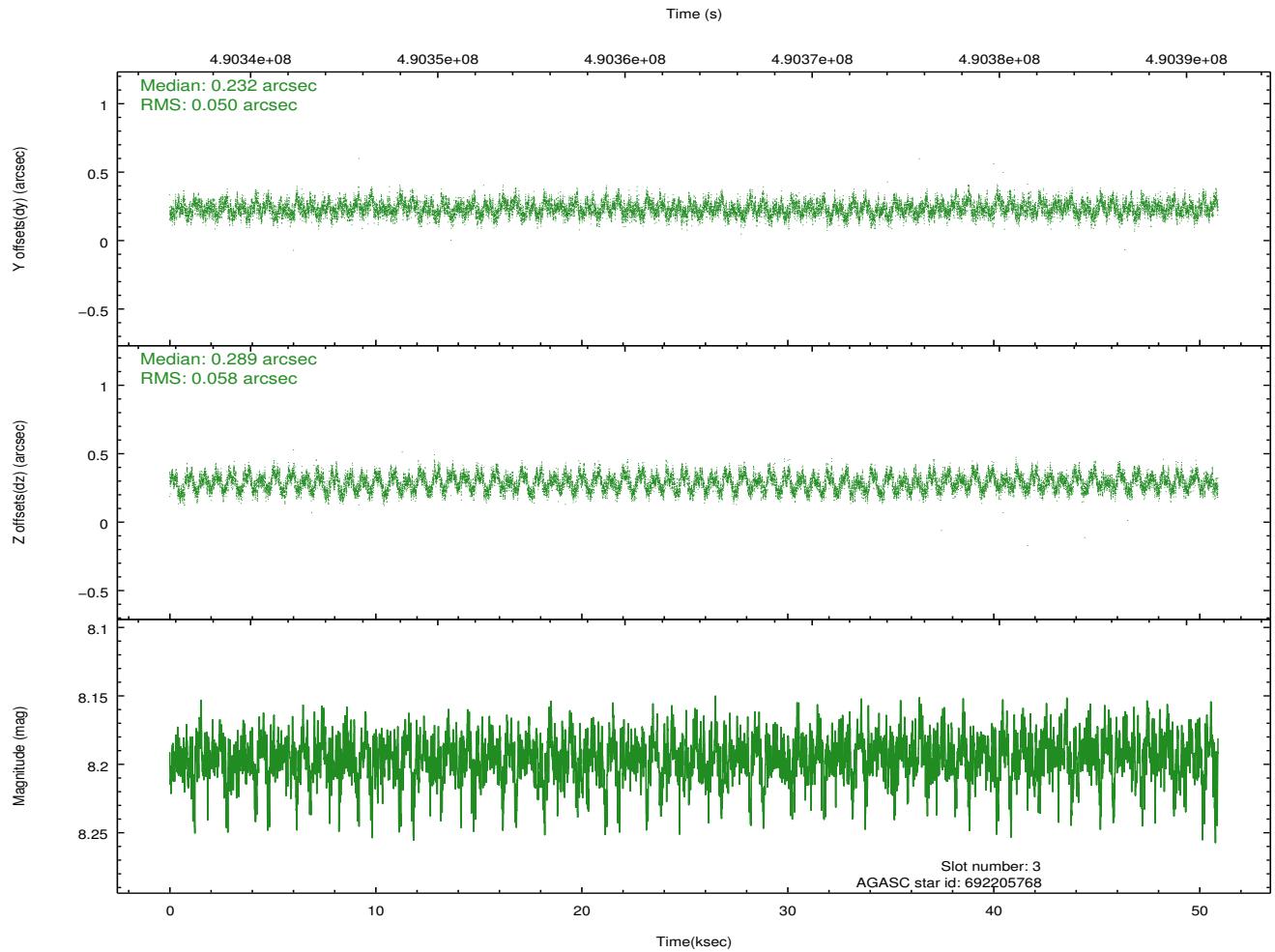
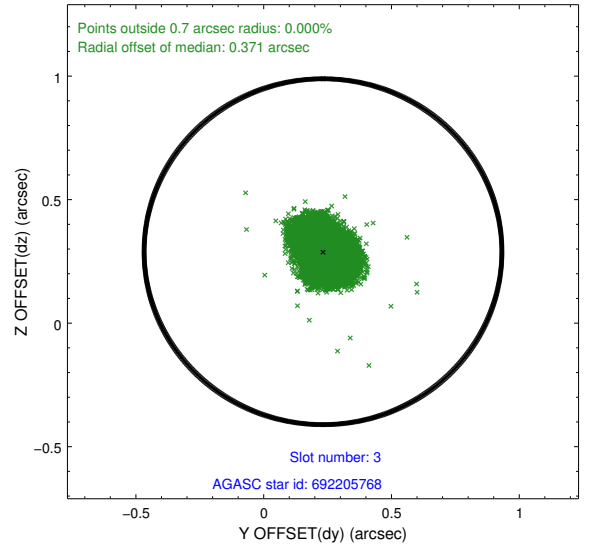
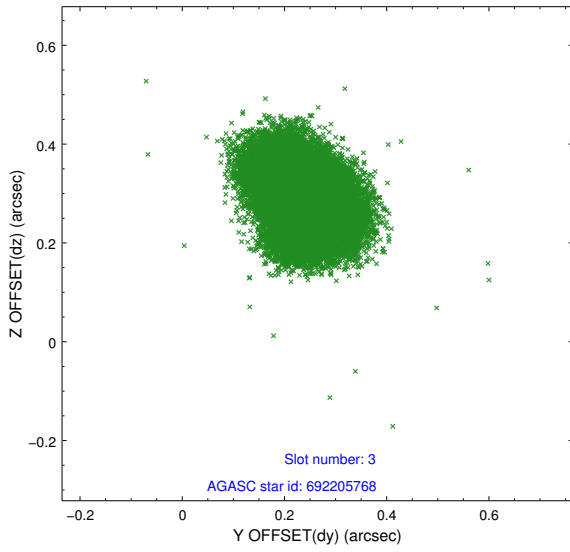
2.3 Aspect

Slot Statistics

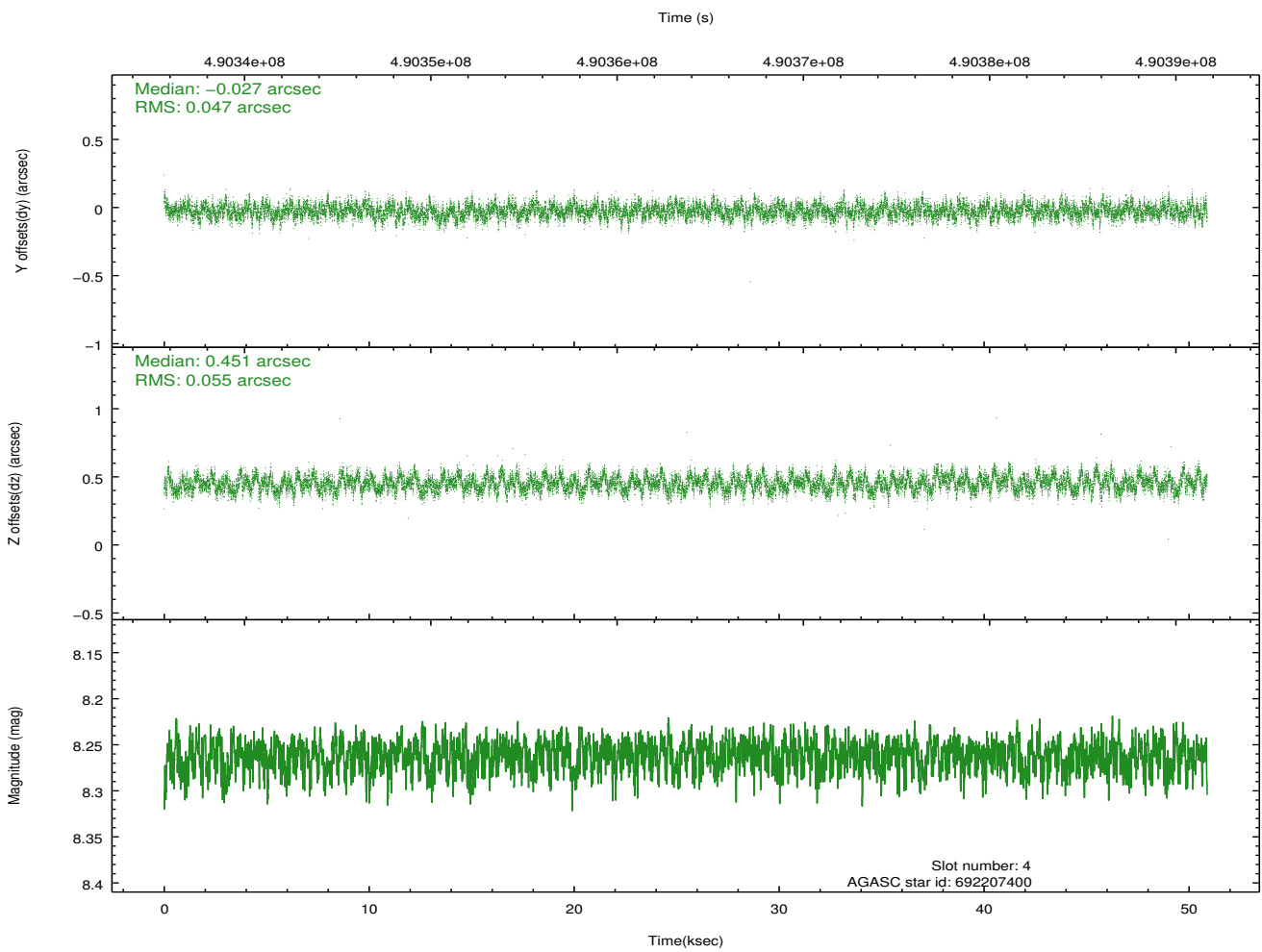
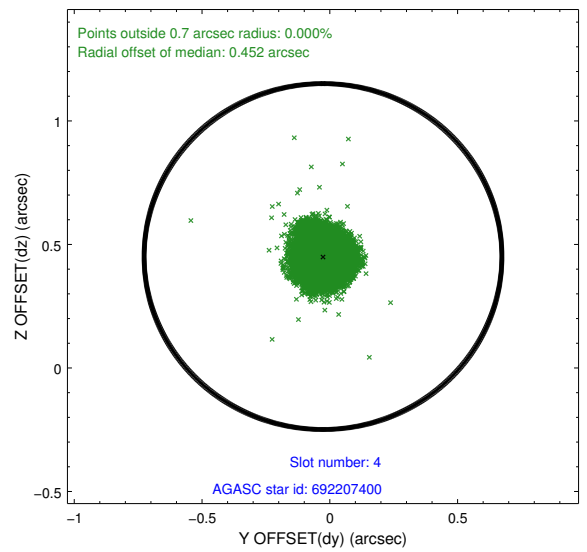
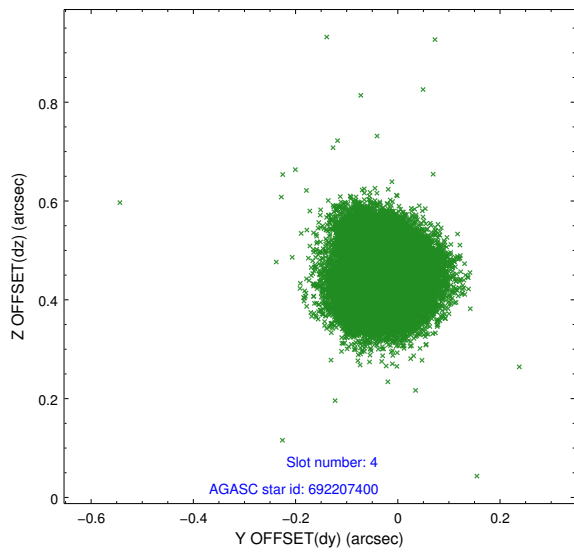
slot	status	id	mag	n_pts	med_dy	med_dz	dr1	dr2	ra	dec	mean_y	mean_z
0	FID	ACIS-S-2	6.97	12414	-0.110	-0.046	0.020	0.026	0.000000	0.000000	-772.69	-1740.01
1	FID	ACIS-S-4	7.04	12414	0.263	0.066	0.012	0.020	0.000000	0.000000	2140.99	168.57
2	FID	ACIS-S-5	7.07	12411	-0.190	-0.008	0.014	0.041	0.000000	0.000000	-1825.61	162.19
3	GUIDE	692205768	8.19	24821	0.232	0.289	0.083	0.128	32.434117	-10.419931	-968.66	216.82
4	GUIDE	692207400	8.26	24818	-0.027	0.451	0.077	0.121	32.382891	-9.868805	946.51	-331.44
5	GUIDE	692207496	7.34	24821	-0.098	-0.070	0.084	0.131	32.082363	-10.041338	751.88	885.60
6	GUIDE	692203840	8.09	24825	-0.238	-0.367	0.079	0.122	31.608949	-9.990830	1525.46	2386.24
7	GUIDE	692202464	9.08	24683	0.140	-0.312	0.141	0.223	31.840289	-10.514654	-528.47	2299.89

2.4 Star Slots

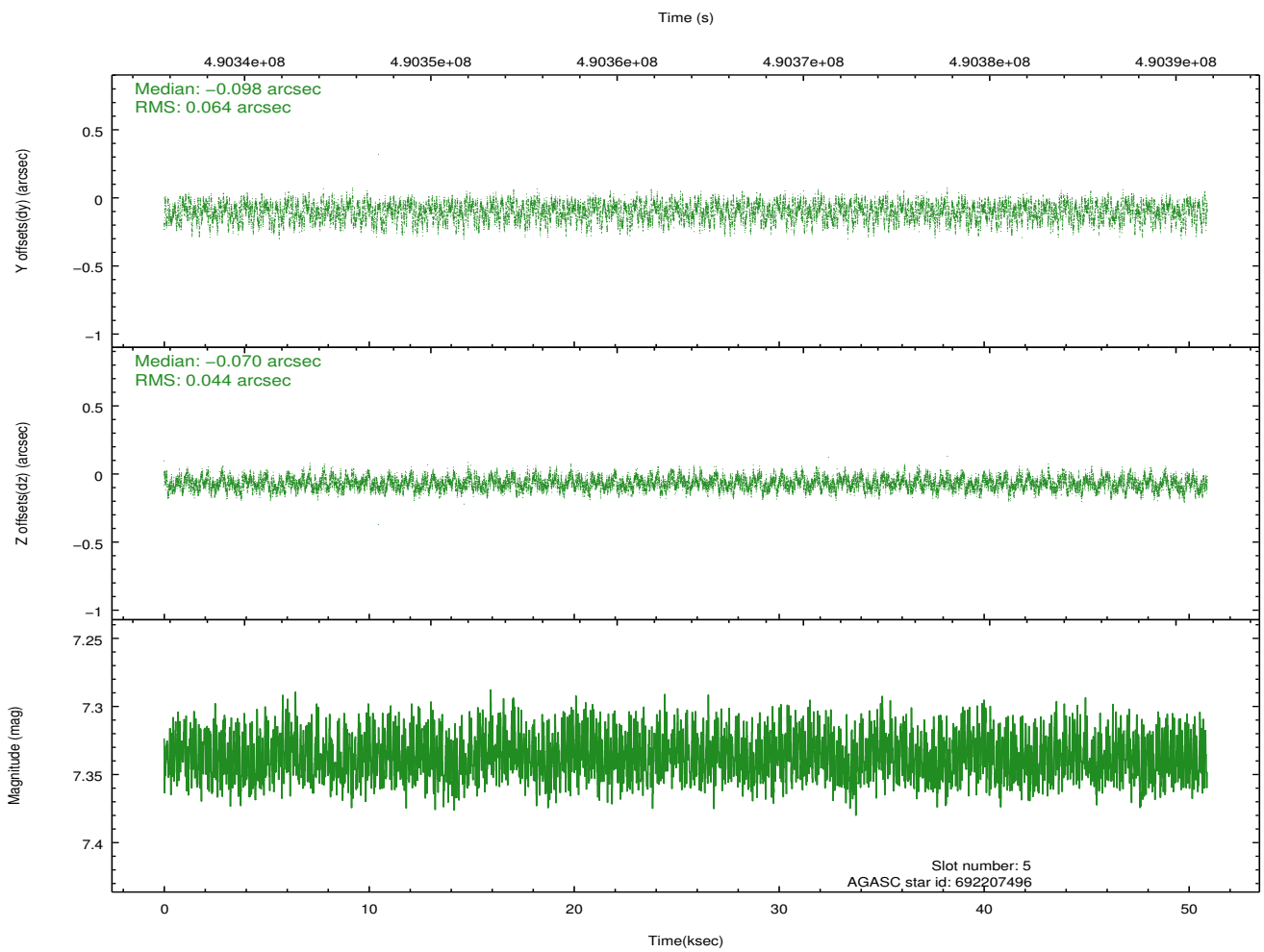
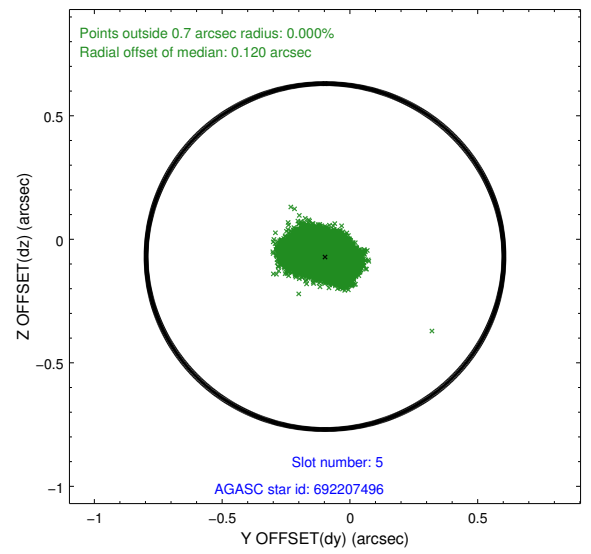
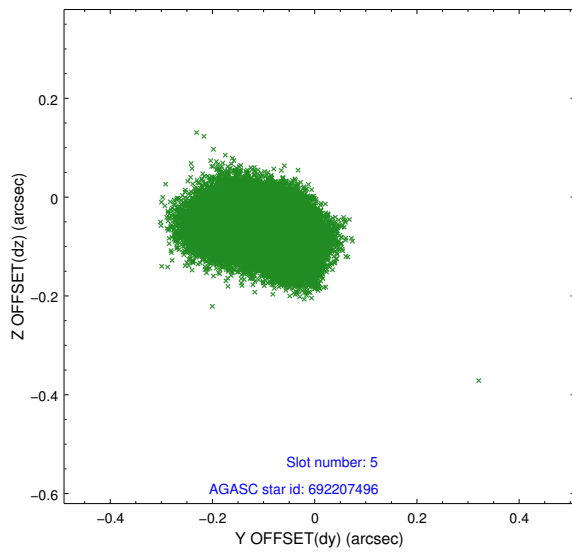
2.4.1 Slot 3



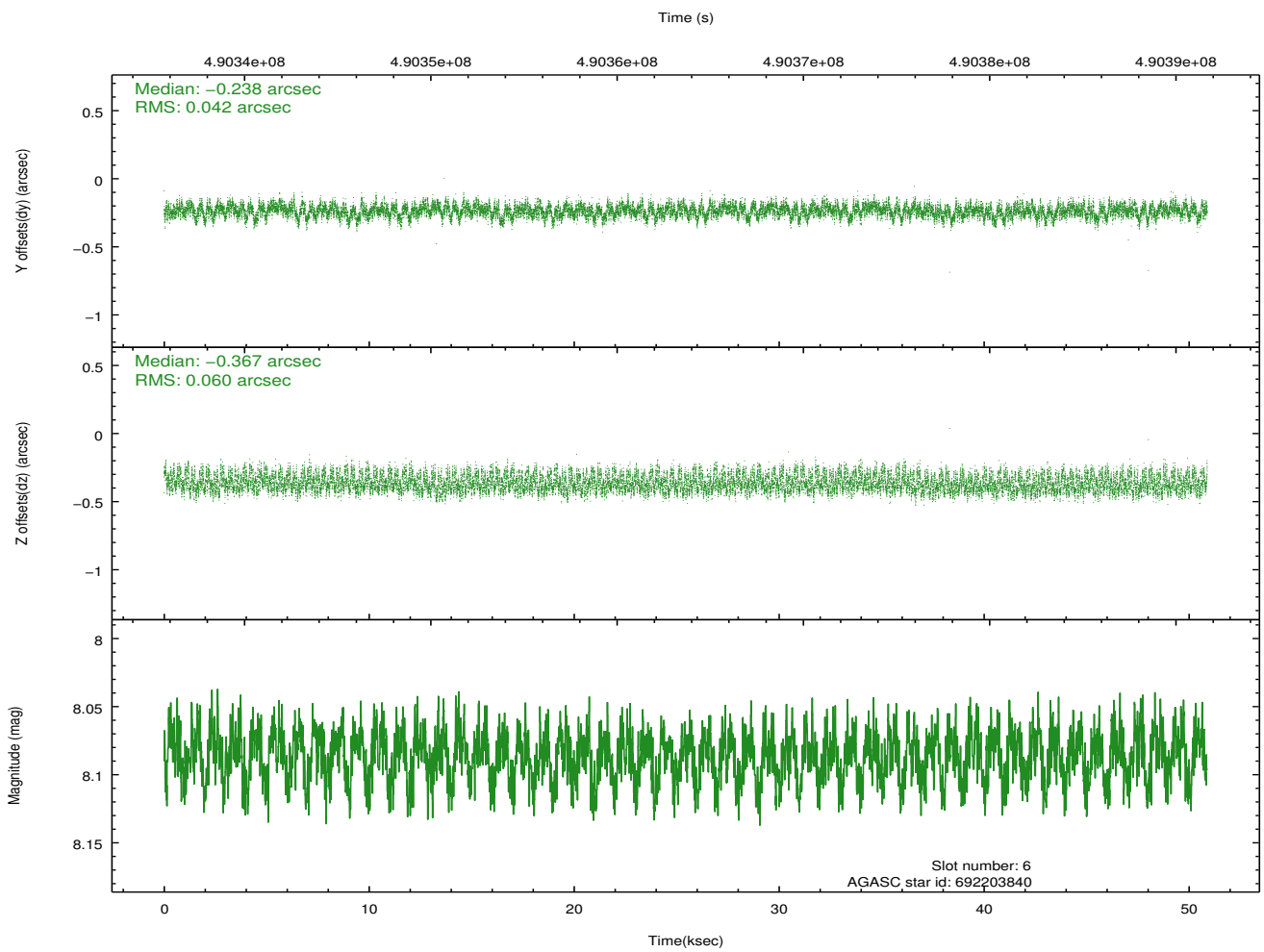
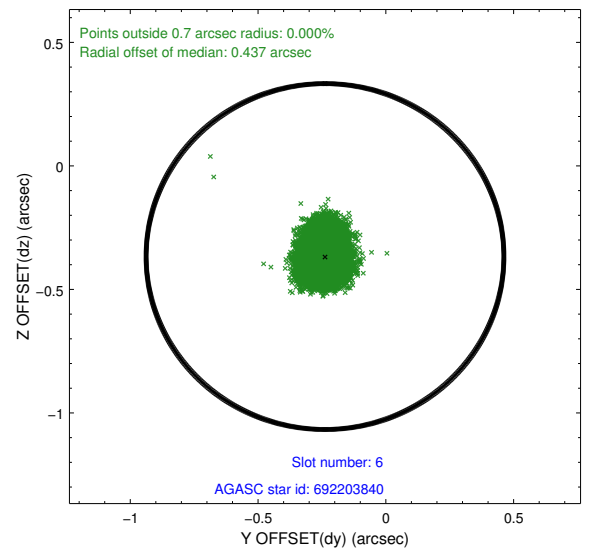
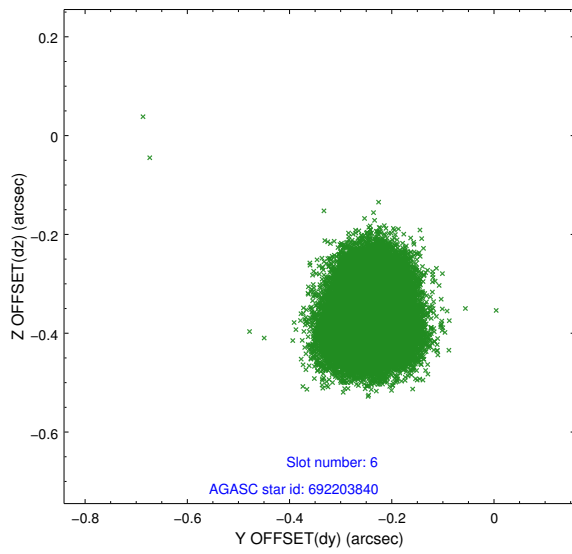
2.4.2 Slot 4



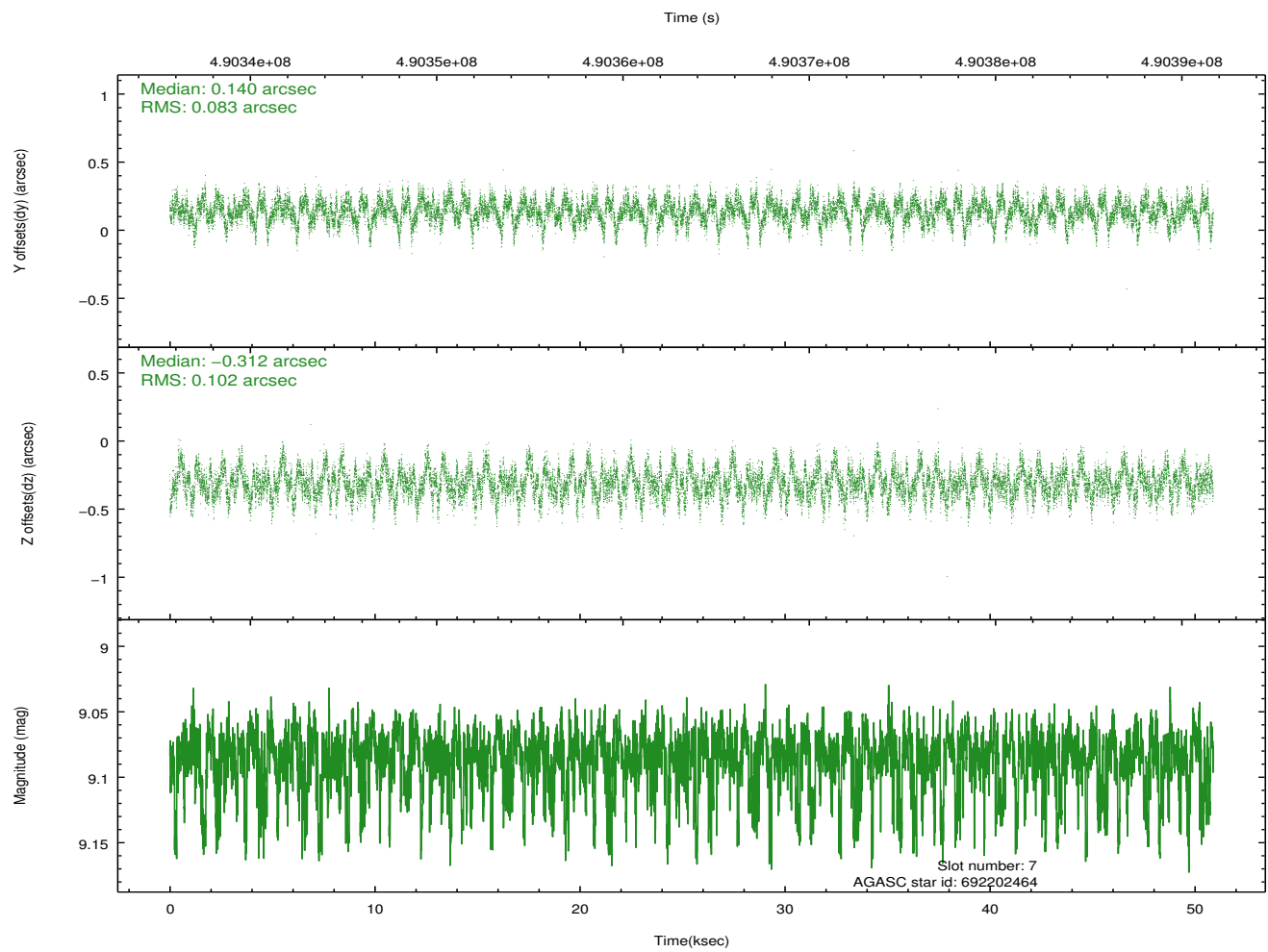
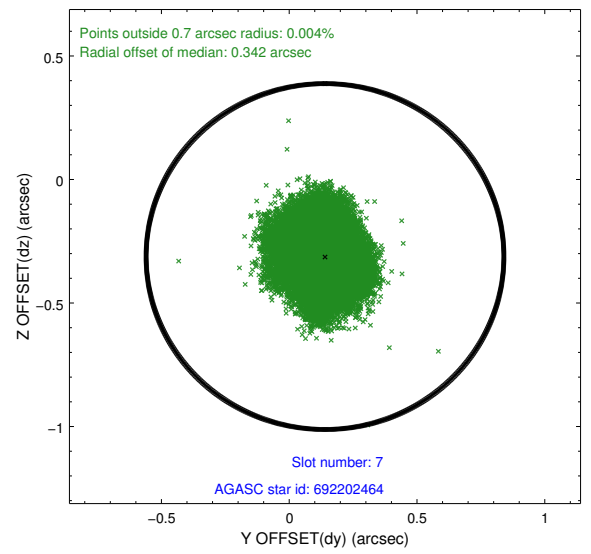
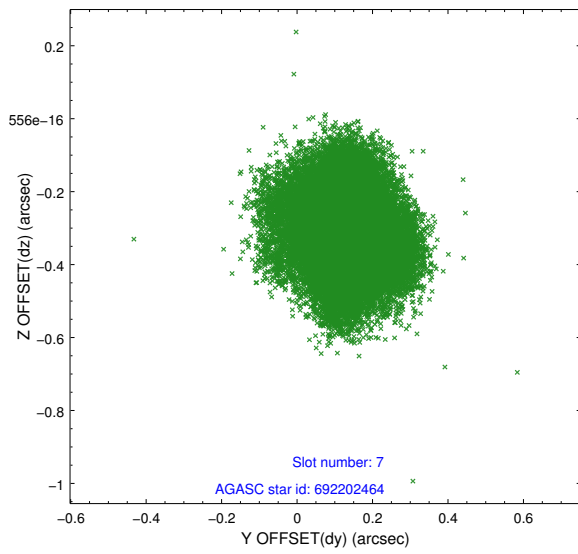
2.4.3 Slot 5



2.4.4 Slot 6

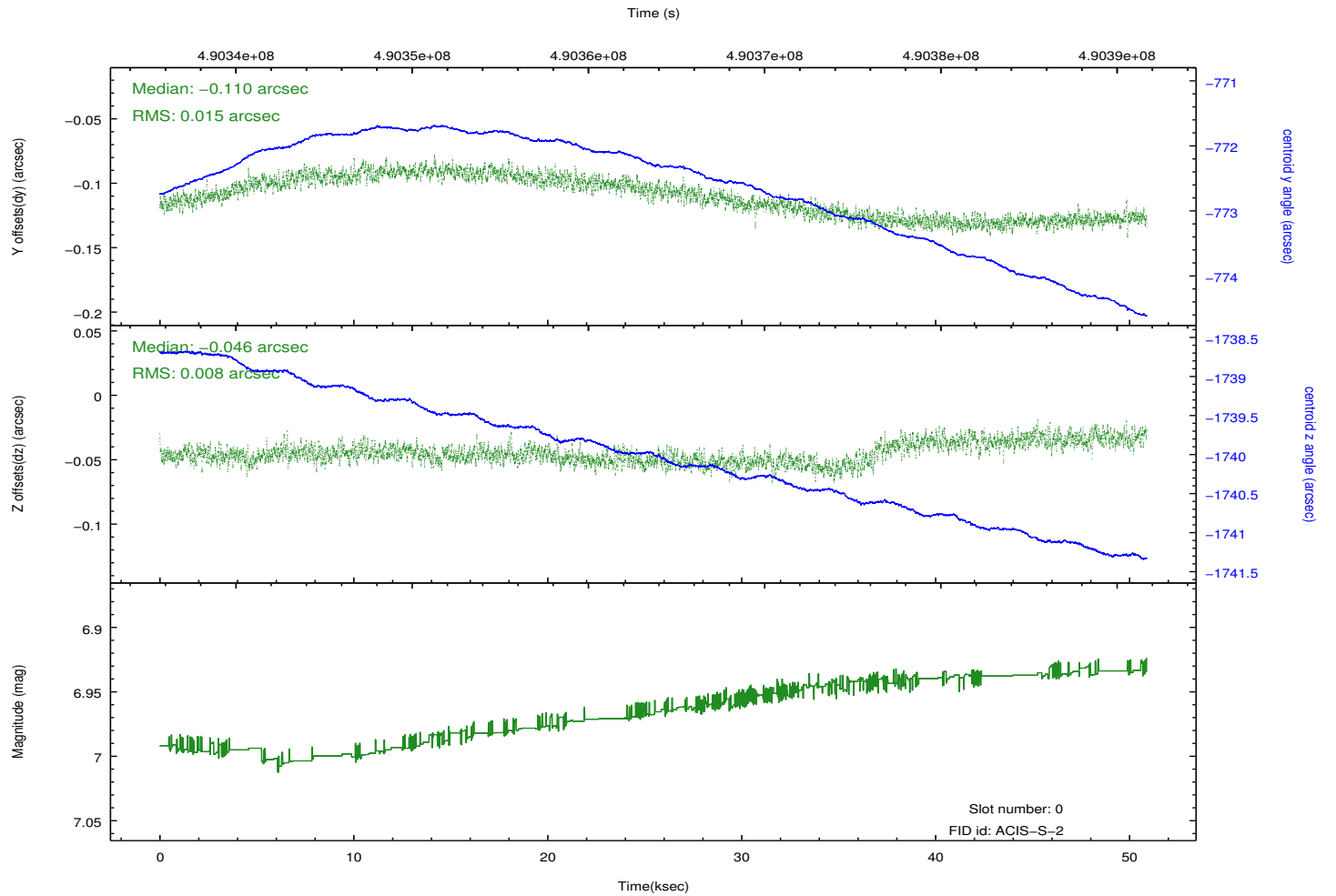
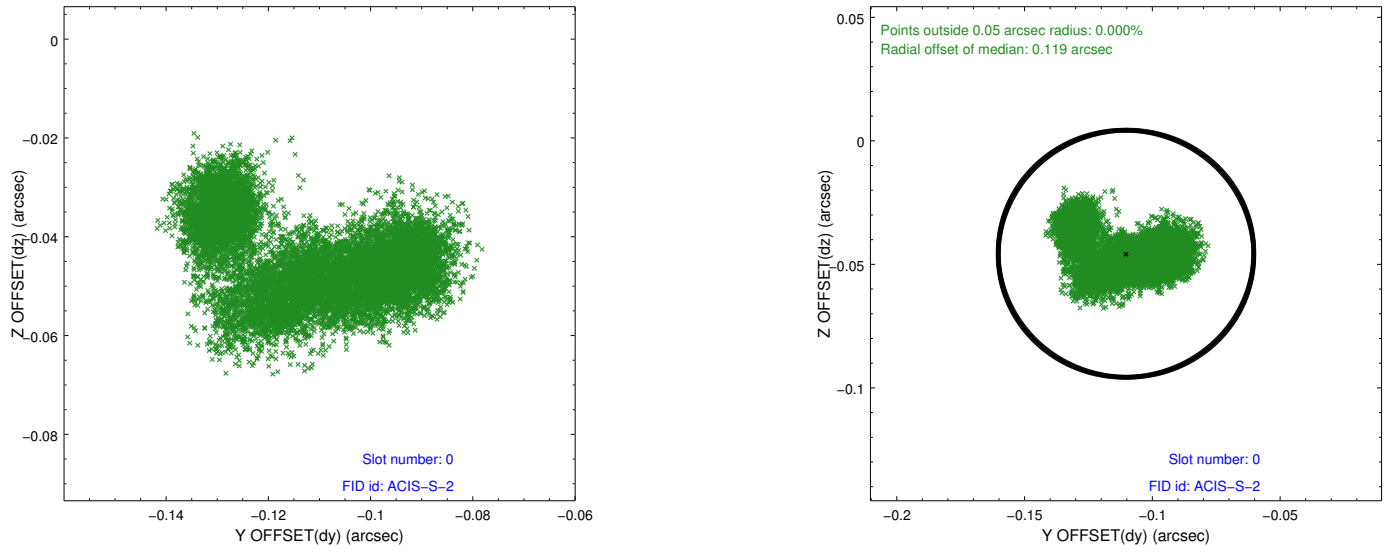


2.4.5 Slot 7

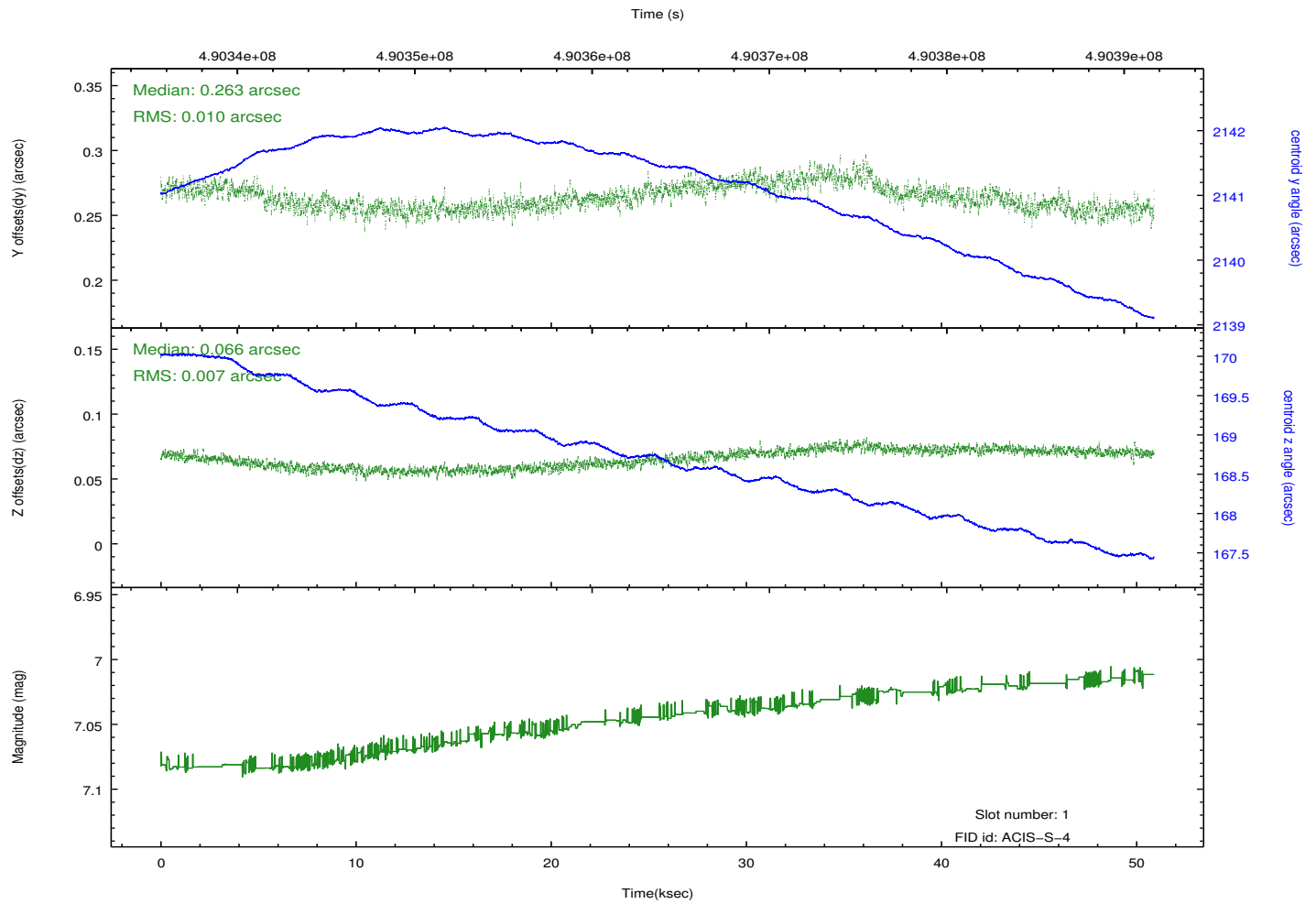
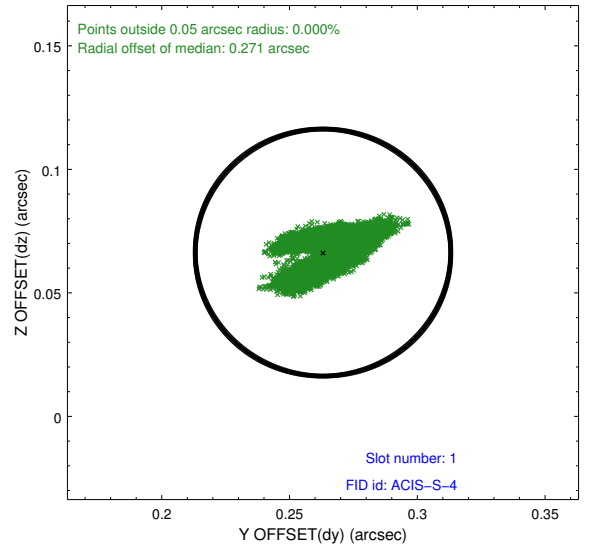
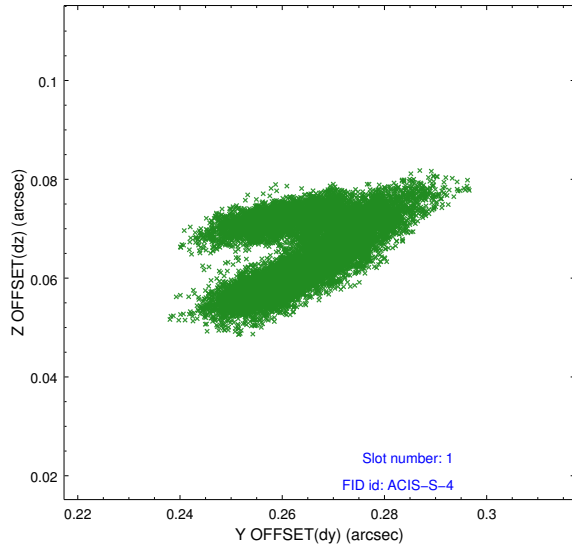


2.5 FID Slots

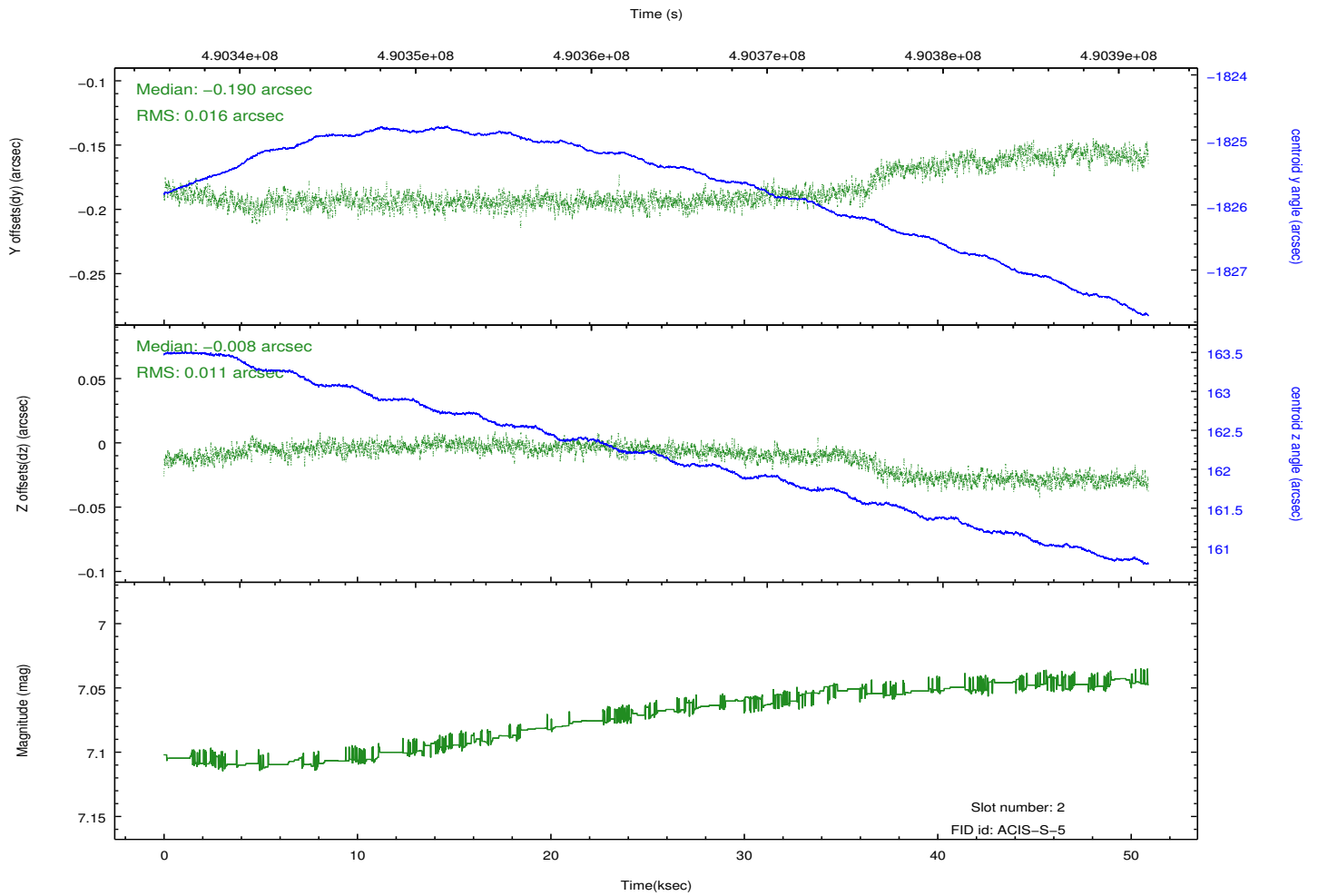
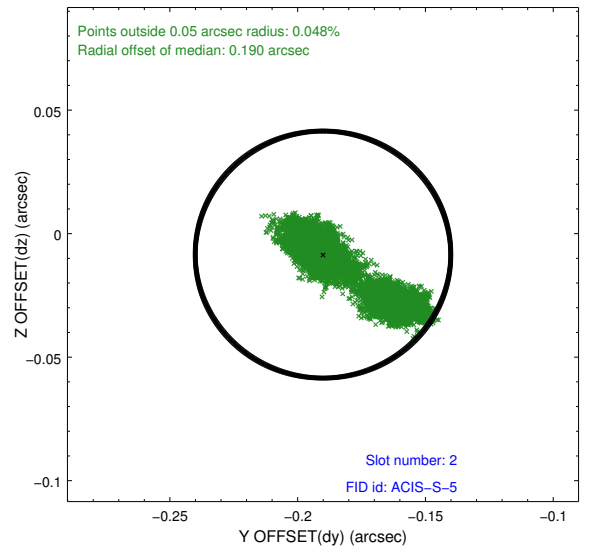
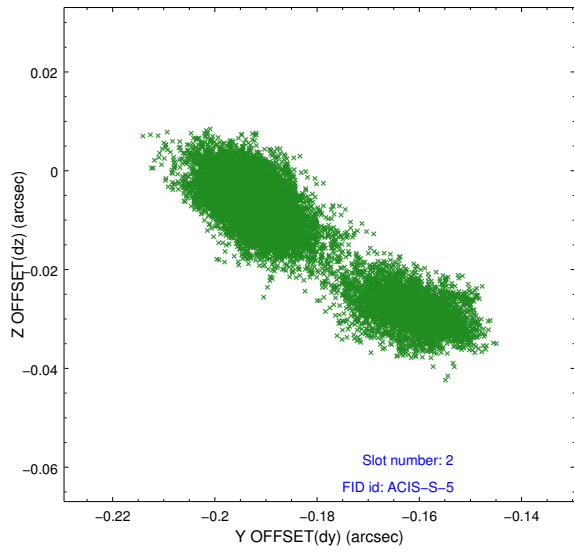
2.5.1 Slot 0



2.5.2 Slot 1



2.5.3 Slot 2



A Summary

A.1 Status

V&V Scientist	Beth Sundheim
V&V Date (YYYY-MM-DD)	2013.07.17
V&V Edition	1
V&V Disposition and Status	OK
V&V Charge Time	50.111278133929

A.2 Comments