

# V&V Reference Report

## L2 ASCDS Version : 10.1.1

Observation 15291 - L2 Version 2  
Chandra X-Ray Center

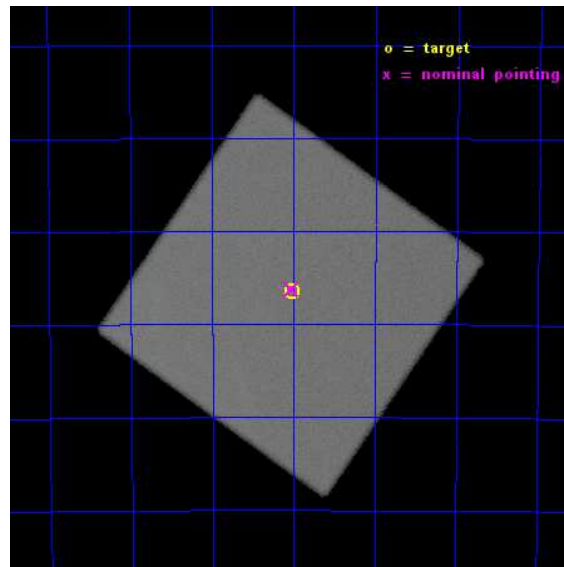
L2 Processing Date : Dec 8 2014

## Contents

<b>1</b>	<b>Front</b>	<b>2</b>
<b>2</b>	<b>OBI</b>	<b>3</b>
2.1	OBI . . . . .	3
2.1.1	Images . . . . .	3
2.1.2	Parameters . . . . .	4
2.1.3	Events . . . . .	4
2.2	Compared Parameters . . . . .	5
2.3	Aspect . . . . .	6
2.4	Star Slots . . . . .	9
2.4.1	Slot 3 . . . . .	9
2.4.2	Slot 4 . . . . .	10
2.4.3	Slot 5 . . . . .	11
2.4.4	Slot 6 . . . . .	12
2.4.5	Slot 7 . . . . .	13
2.5	FID Slots . . . . .	14
2.5.1	Slot 0 . . . . .	14
2.5.2	Slot 1 . . . . .	15
2.5.3	Slot 2 . . . . .	16
<b>A</b>	<b>Summary</b>	<b>17</b>
A.1	Status . . . . .	17
A.2	Comments . . . . .	17

# 1 Front

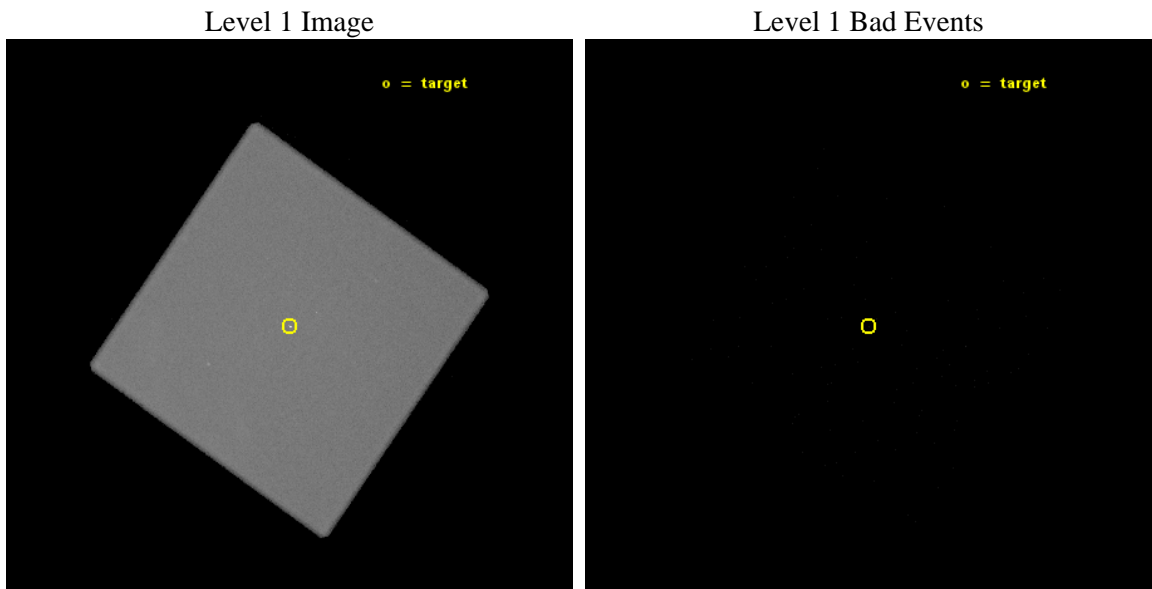
seq_num	502022	Sequence number
obs_id	15291	Observation id
title	Proper Motion Measurement of the CCO 1E 1207.4-5209 in SNR G296.5+10.0	Proposal title
observer	Dr. Peter Predehl	Principal investigator
object	1E 1207.4-5209	Source name
ra_targ	182.50375	Observer's specified target RA [deg]
dec_targ	-52.441111	Observer's specified target Dec [deg]
ra_nom	182.50737142845	Nominal RA [deg]
dec_nom	-52.437537771988	Nominal Dec [deg]
roll_nom	80.028736212519	Nominal Roll [deg]
revision	2	Processing version of data
ontime	36146.883232355	[s]
livetime	35880.391032347	Ontime multiplied by DTCOR
l2events	2070244	Number of level 2 events



## 2 OBI

### 2.1 OBI

#### 2.1.1 Images



### 2.1.2 Parameters

obi_num	0	Obi number	sched_exp_time	35960.000000	[s] Scheduled observation exposure time
ascdsver	10.3.1	Processing system revision	ontime	36146.883232355	[s]
caldbver	4.6.4	&#160	l1events	2829882	Number of level 1 events
date	2014-12-08T10:32:00	Date and time of file creation			
revision	2	Processing version of data			

### 2.1.3 Events

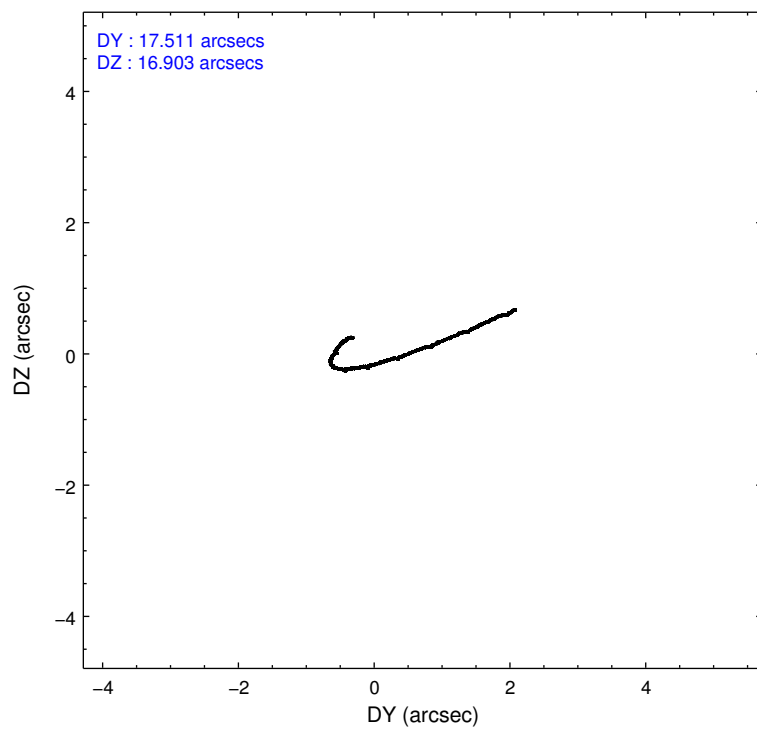
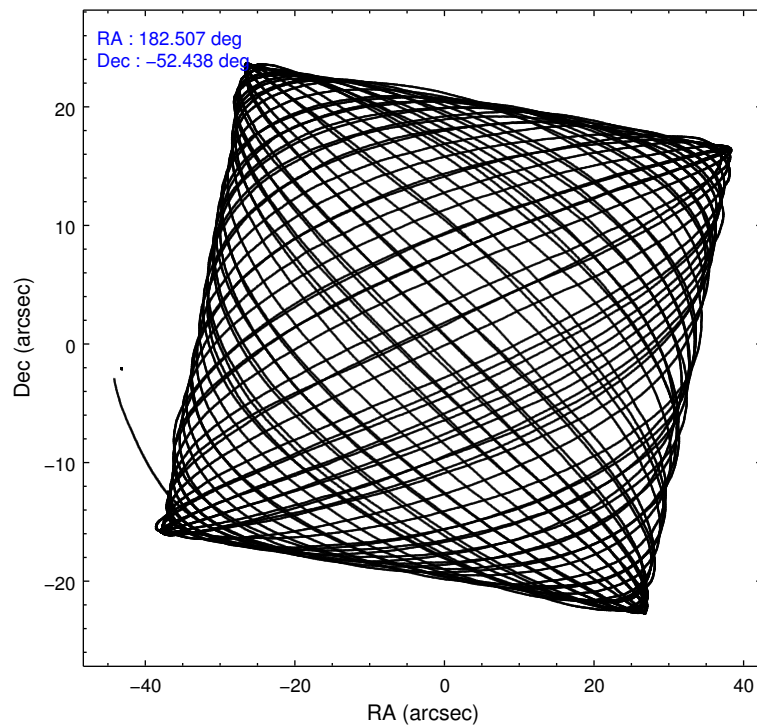
#### Level 1 Events

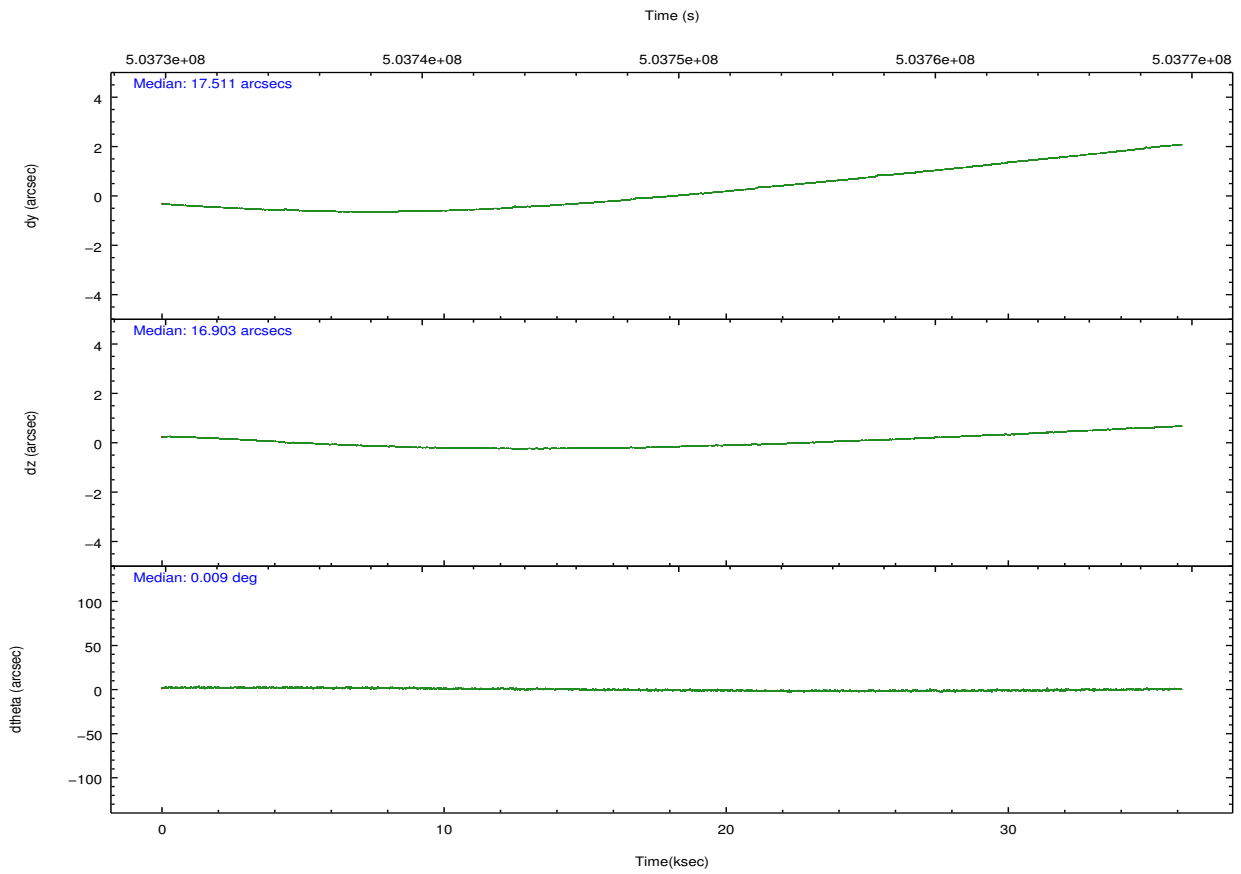
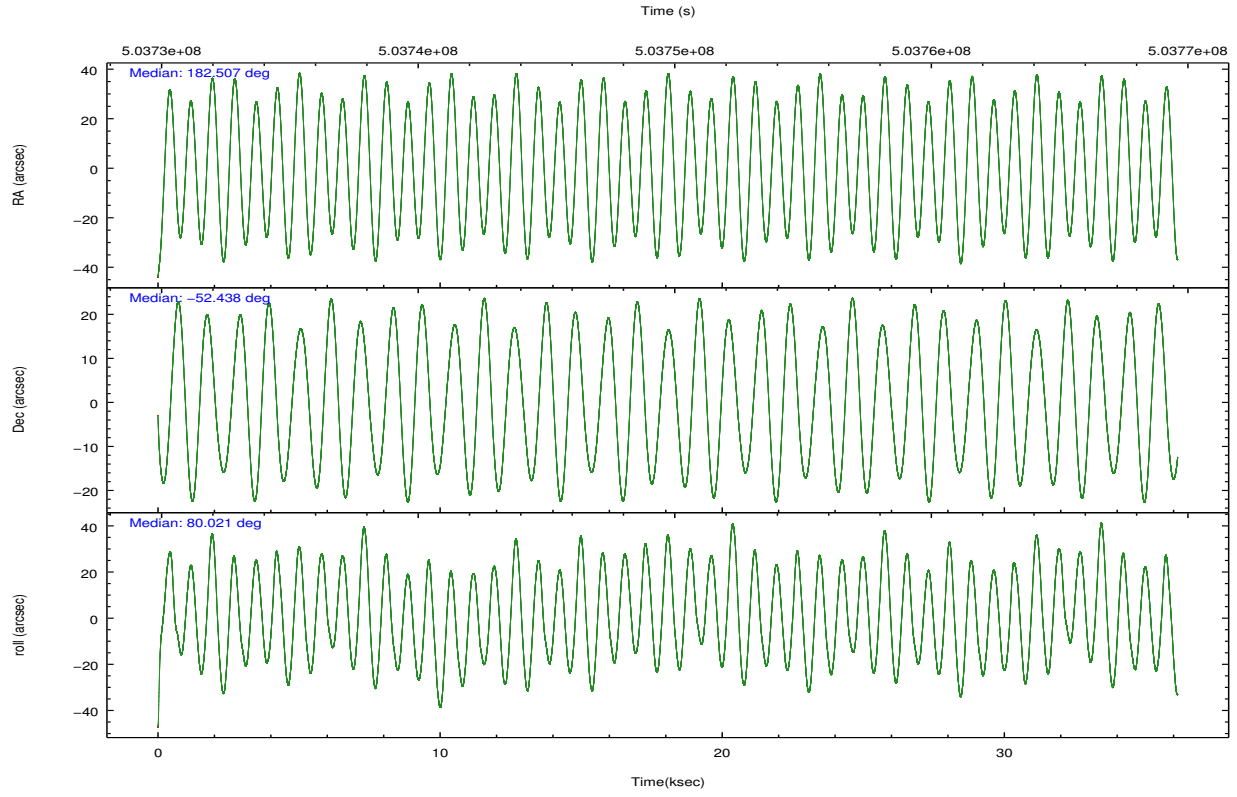
	<b>segment 0</b>
level 1 events	2829882
rejected events	43255
rejected %	1%

## 2.2 Compared Parameters

Parameter	Planned	Actual	Parameter	Planned	Actual
Instrument	HRC	HRC	Obspar format version number	7	7
Detector	HRC-I	HRC-I	Obspar file type	PREDICTED	ACTUAL
Grating	NONE	NONE	Obspar update status	NONE	UPDATED
Data mode	OBSERVING	OBSERVING			
Observation mode	POINTING	POINTING			
[deg] Pointing RA	182.523643	182.5073714284464			
[deg] Pointing Dec	-52.462838	-52.43753777198791			
[deg] Pointing Roll	80.137135	80.0287362125186			
[mm] SIM focus pos	-1.040293	-1.038866356238299			
[mm] SIM defocus	0	0.001426264420575141			
[mm] SIM translation stage pos	126.985494	126.9829799899862			
[mm] SIM translation stage offset	0	0.002508901615314585			
[s] Observation start time (MET)	503731834.184000	503731118.17862			
Observation start date	2013-12-18T05:29:27	2013-12-18T05:18:38			
[s] Observation end time (MET)	503767794.184000	503768367.19317			
Observation end date	2013-12-18T15:28:47	2013-12-18T15:39:27			

## 2.3 Aspect





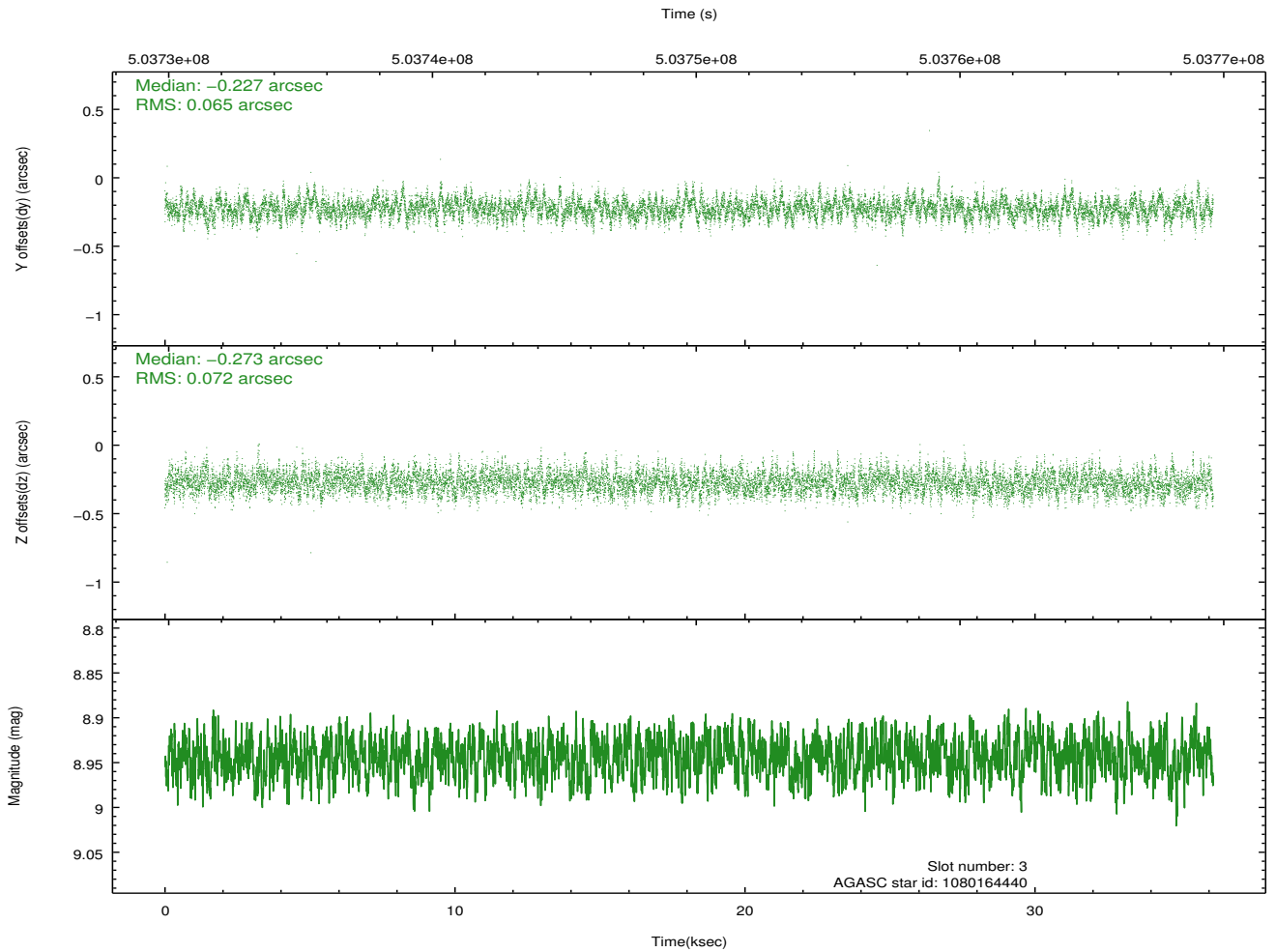
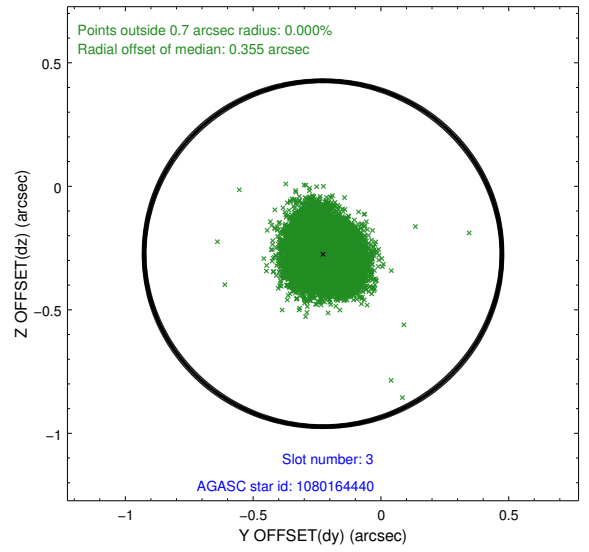
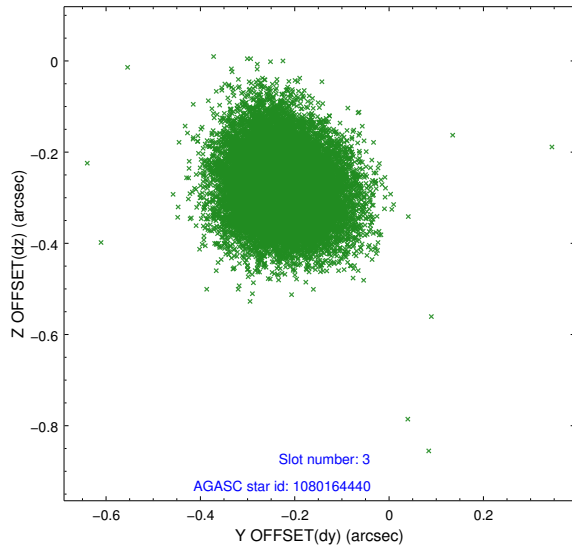
### Slot Statistics

slot	status	used	id	mag	n_pts	med_dy	med_dz	dr1	dr2	ra	dec	mean_y	mean_z
0	FID		HRC-I-1	6.98	8817	-0.089	0.051	0.010	0.018	0.000000	0.000000	-773.76	-1305.05
1	FID		HRC-I-2	7.01	8817	0.257	-0.148	0.017	0.025	0.000000	0.000000	839.13	-1306.97
2	FID		HRC-I-3	7.06	8817	-0.049	0.008	0.013	0.023	0.000000	0.000000	-1202.10	999.33
3	GUIDE	used	1080164440	8.94	17626	-0.227	-0.273	0.104	0.166	181.986340	-52.264623	496.06	1287.87
4	GUIDE	used	1080189880	9.62	17603	-0.180	0.176	0.167	0.306	182.794721	-51.898848	2102.79	-244.91
5	GUIDE	used	1131414168	8.94	17628	0.118	0.378	0.112	0.181	183.224863	-52.915912	-1352.58	-1779.86
6	GUIDE	used	1131423616	8.85	17628	0.181	-0.002	0.106	0.172	182.073492	-52.590429	-623.69	890.84
7	GUIDE	used	1131424824	9.24	17623	0.111	-0.272	0.109	0.185	181.758646	-52.547110	-594.11	1596.45

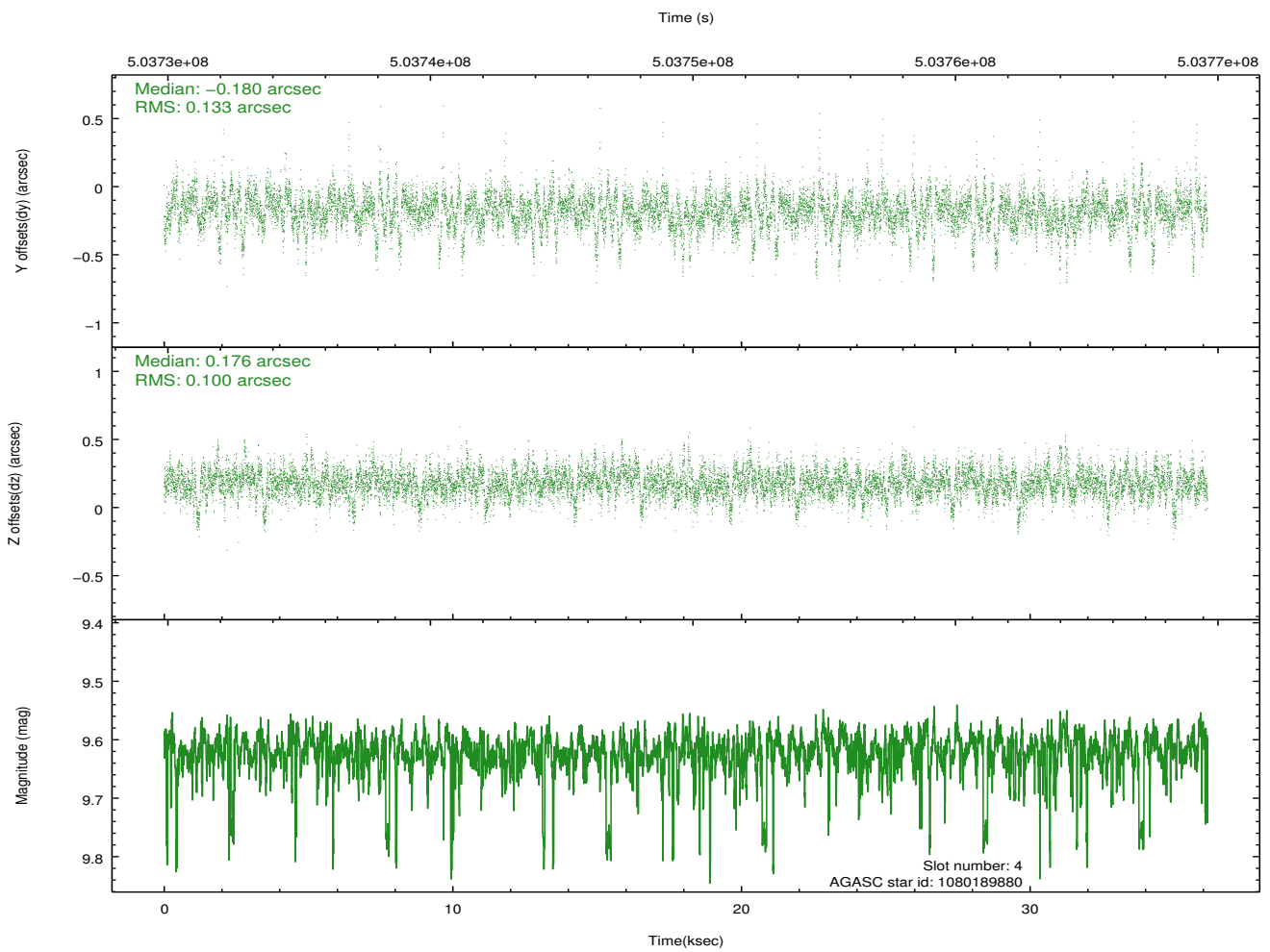
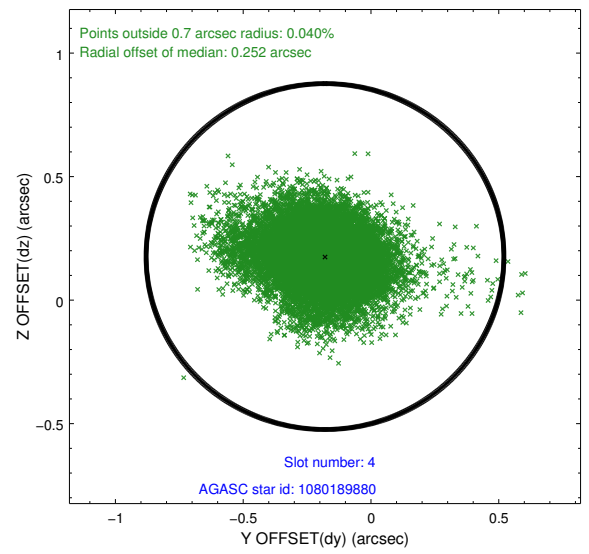
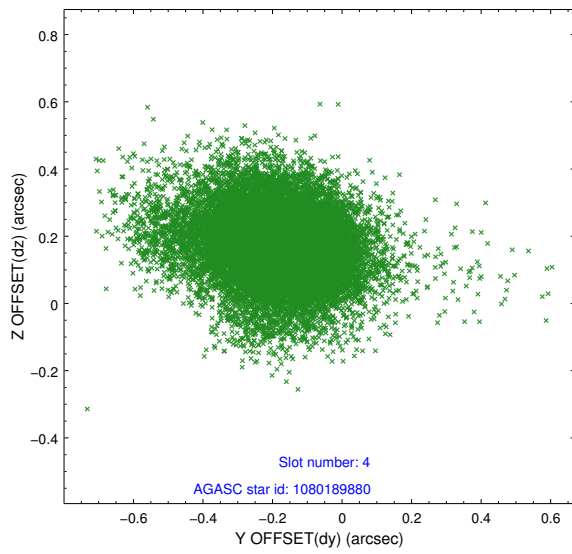
∞

## 2.4 Star Slots

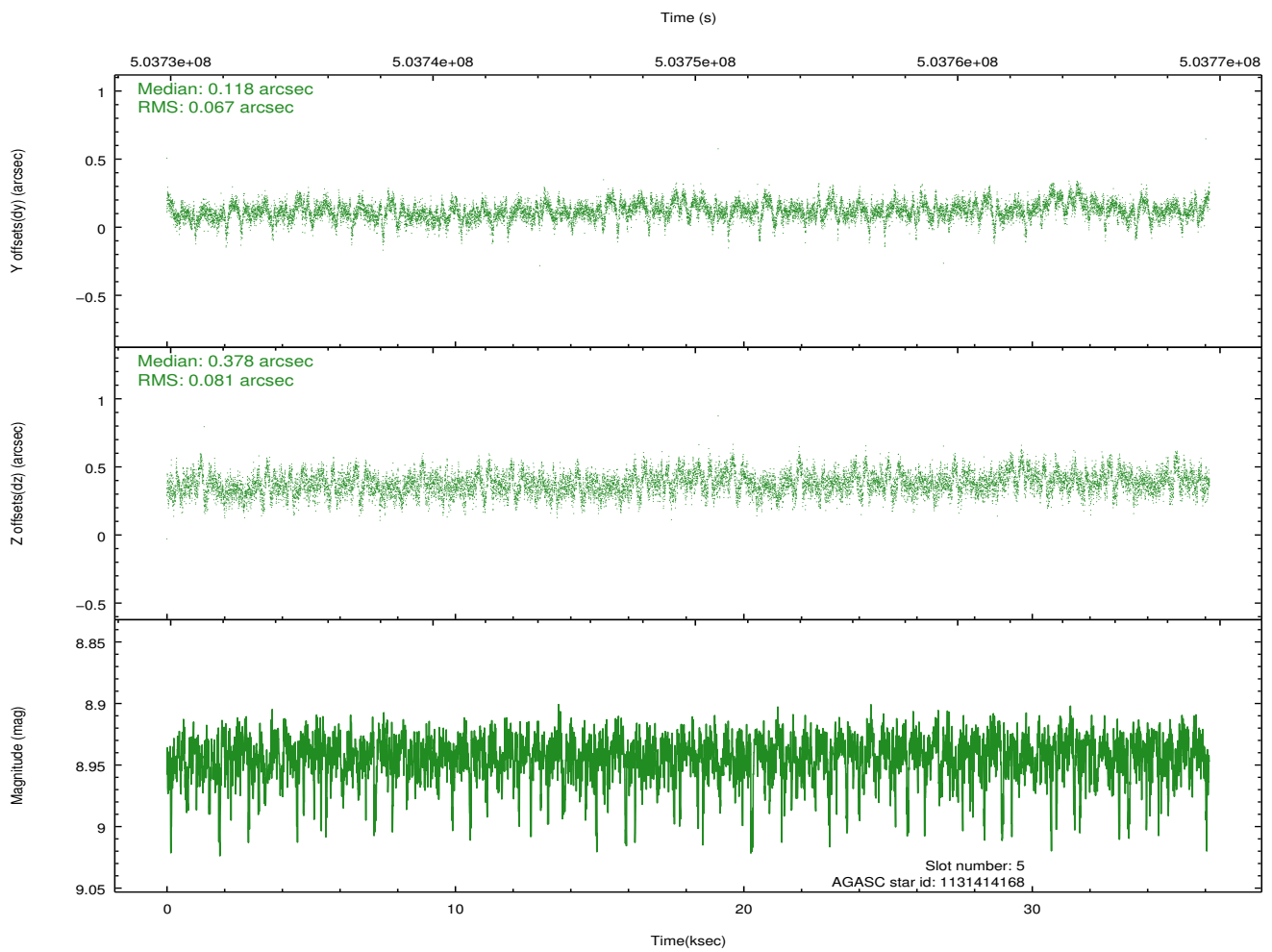
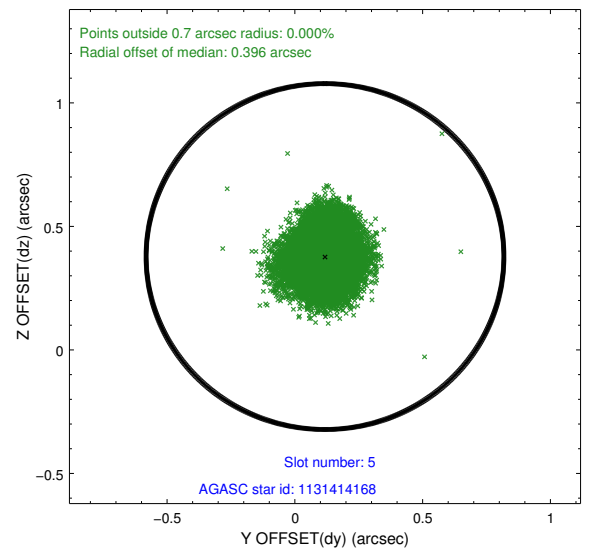
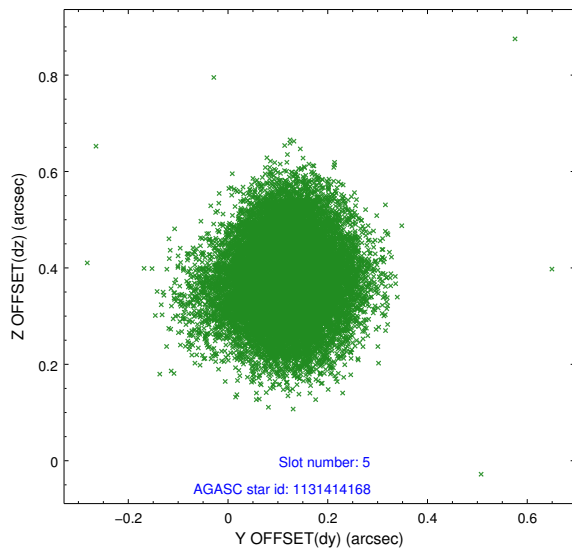
### 2.4.1 Slot 3



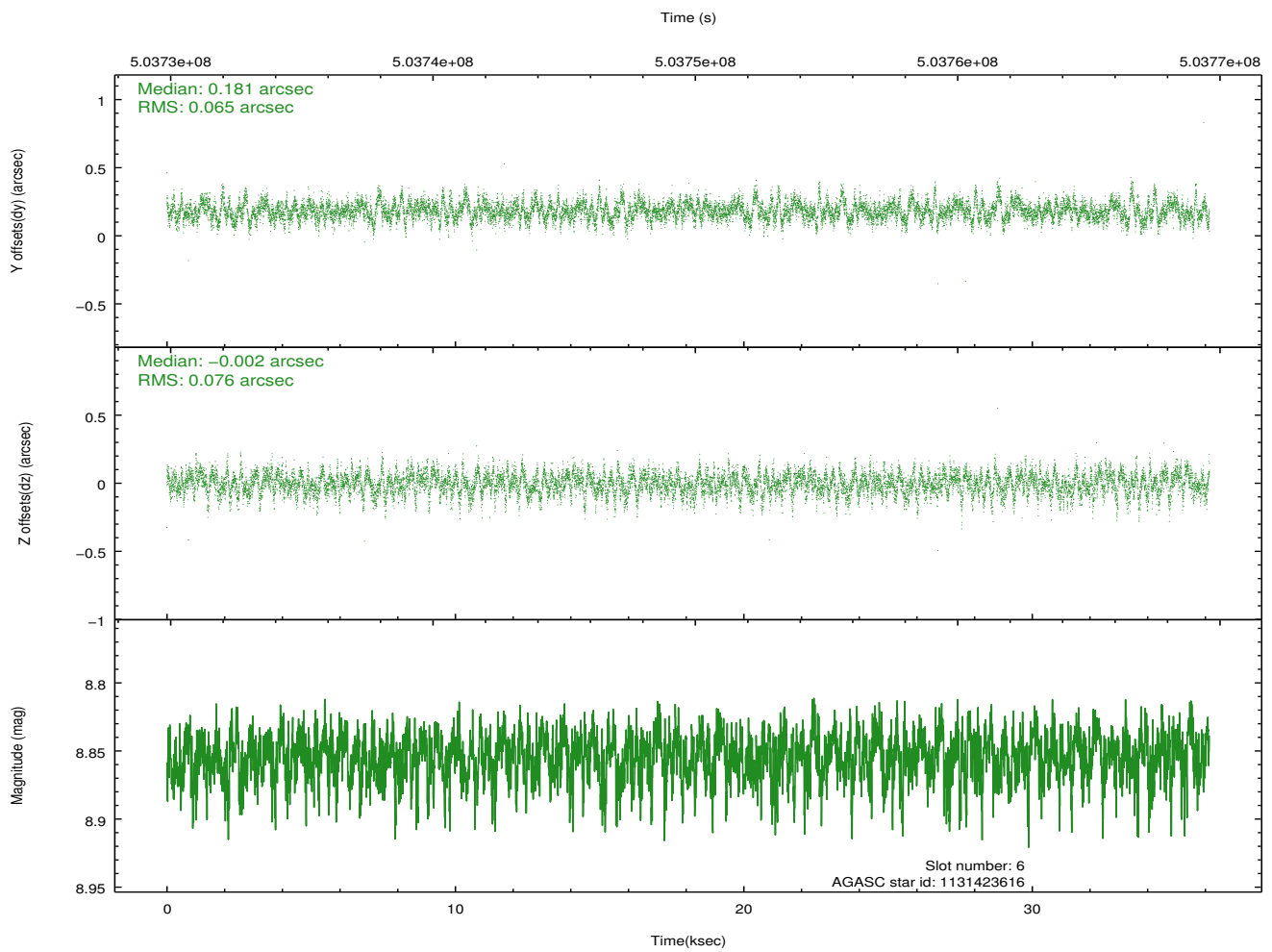
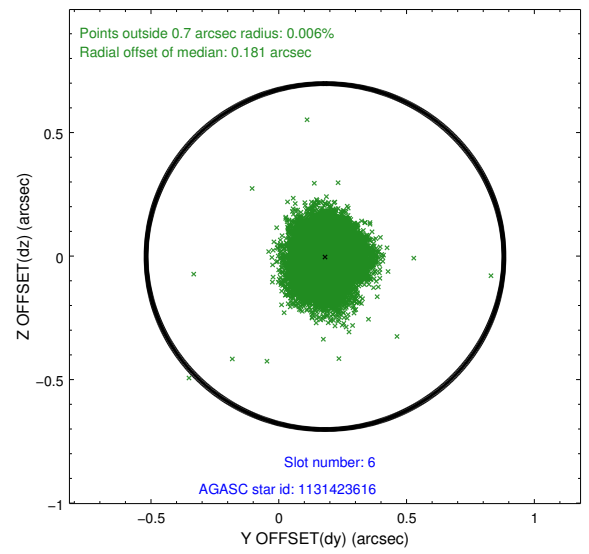
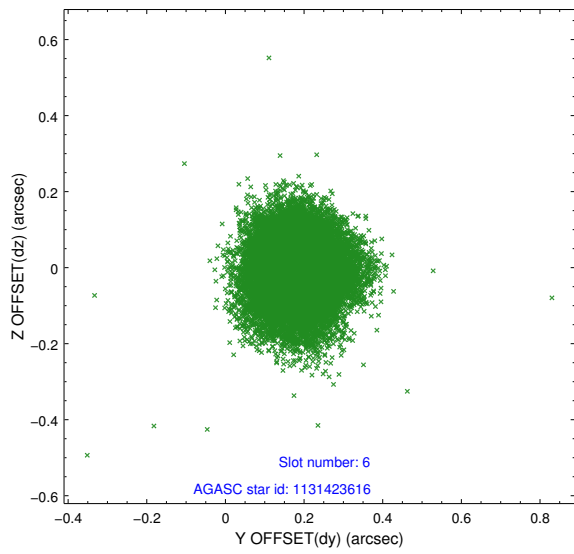
## 2.4.2 Slot 4



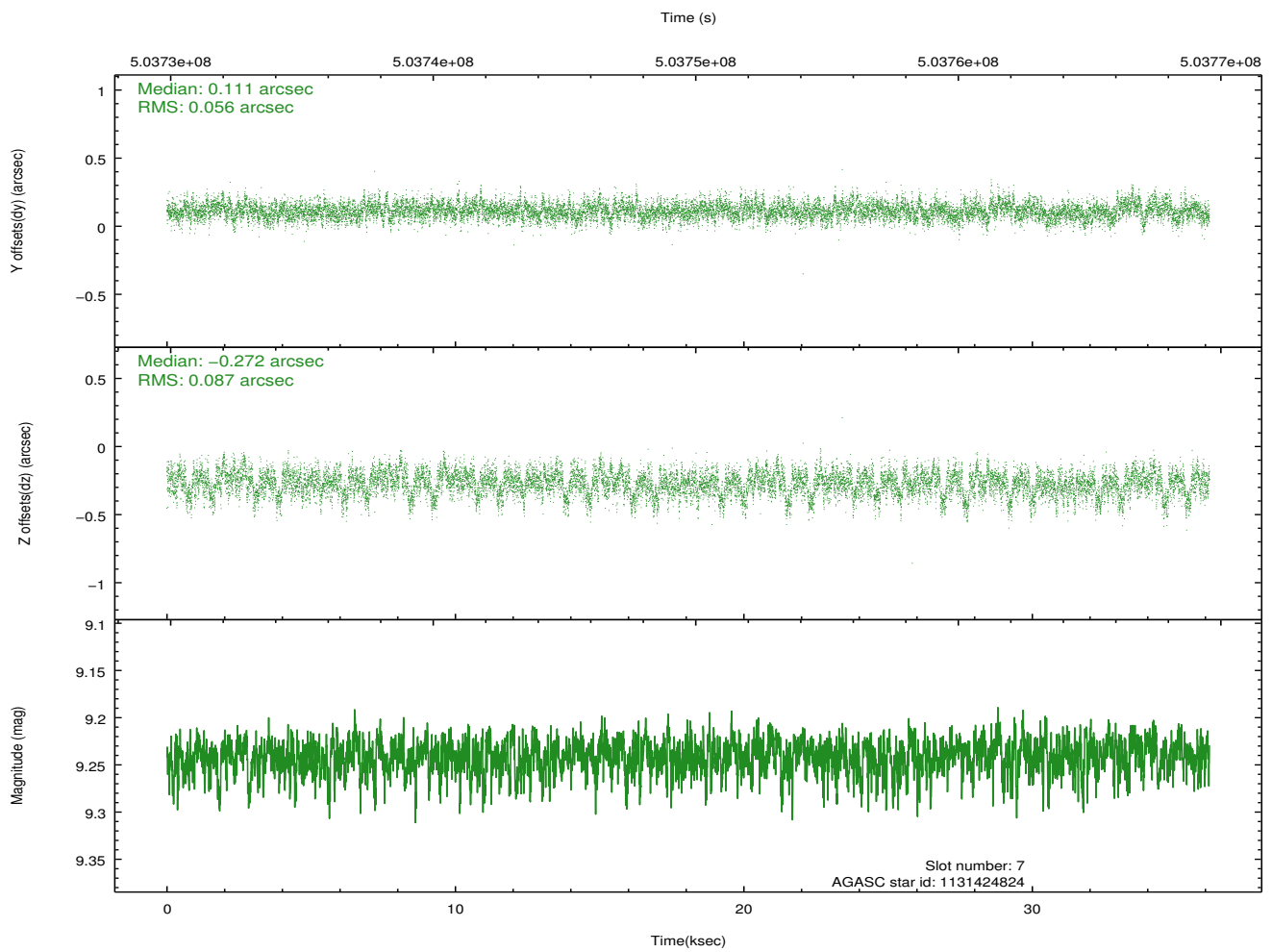
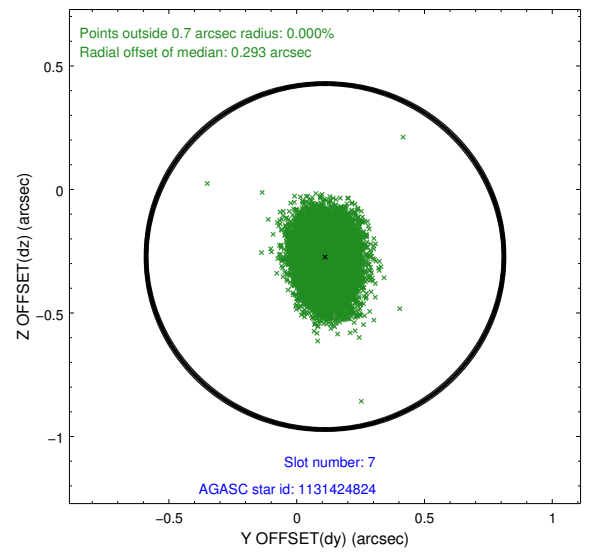
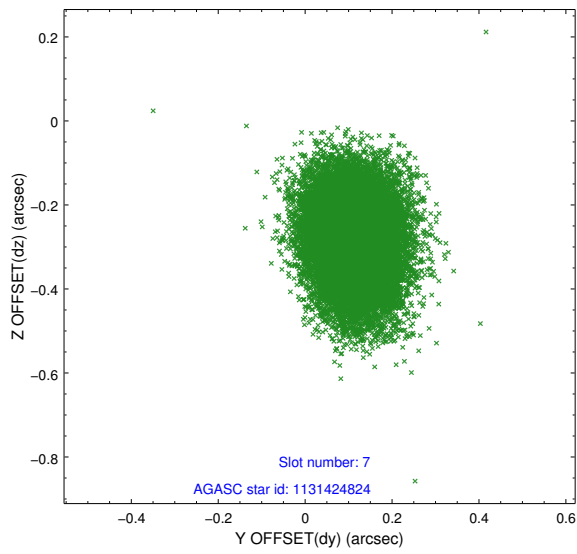
### 2.4.3 Slot 5



## 2.4.4 Slot 6

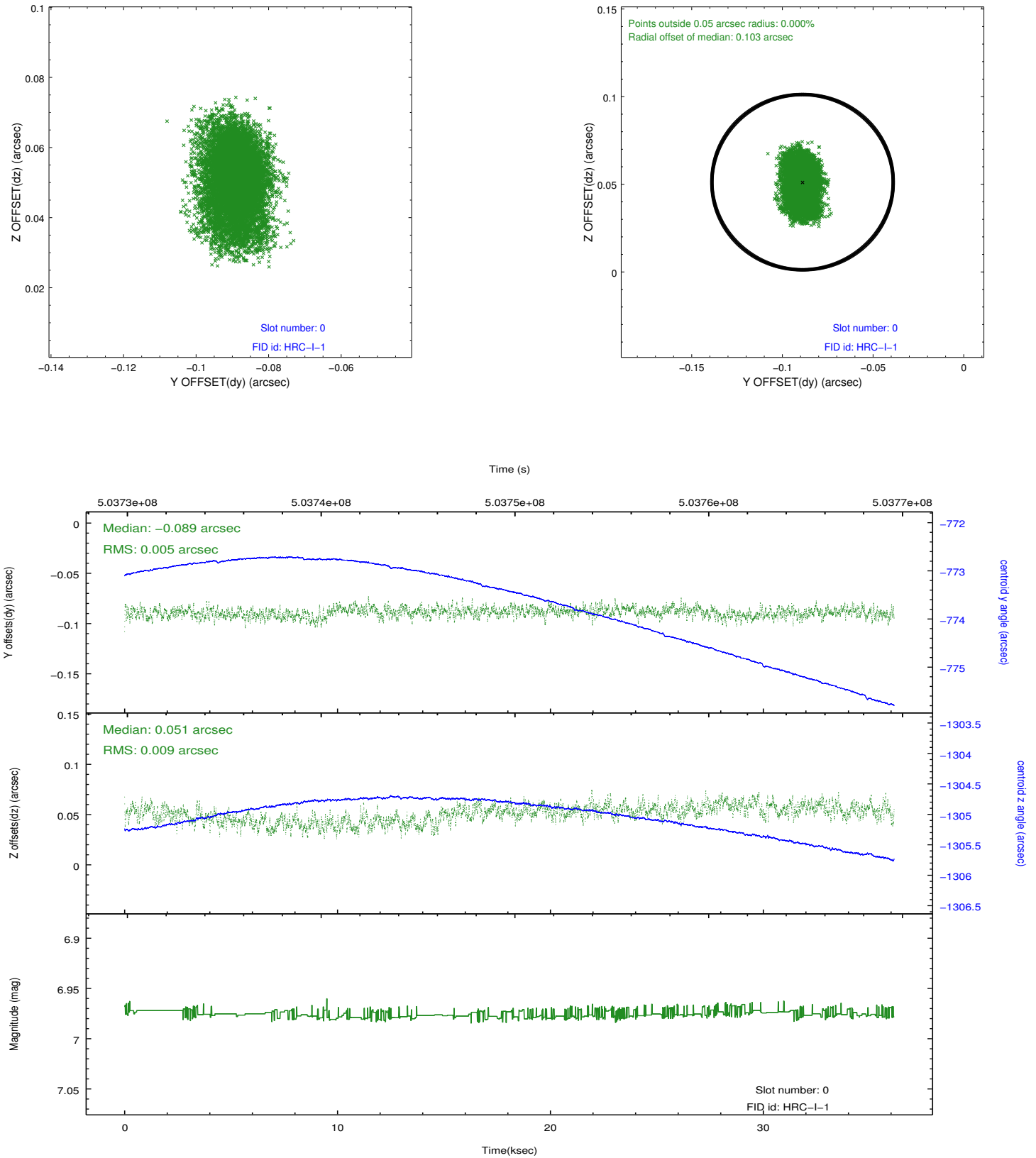


## 2.4.5 Slot 7

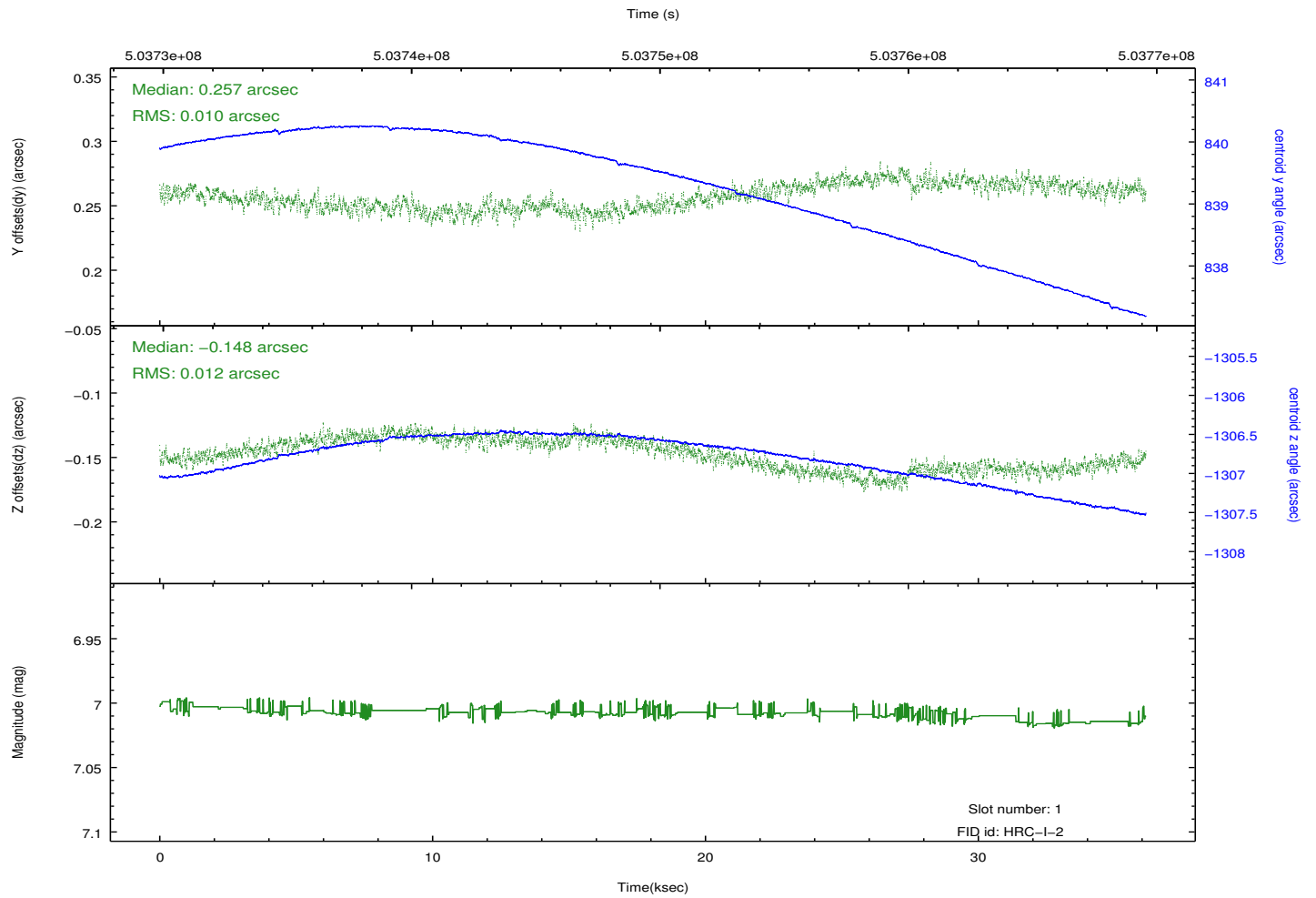
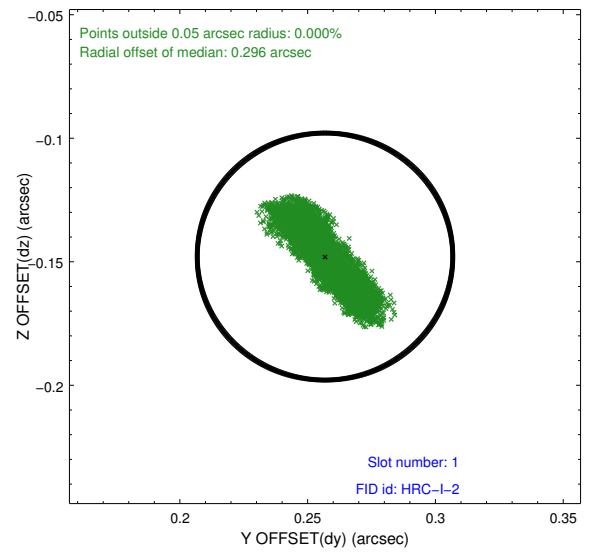
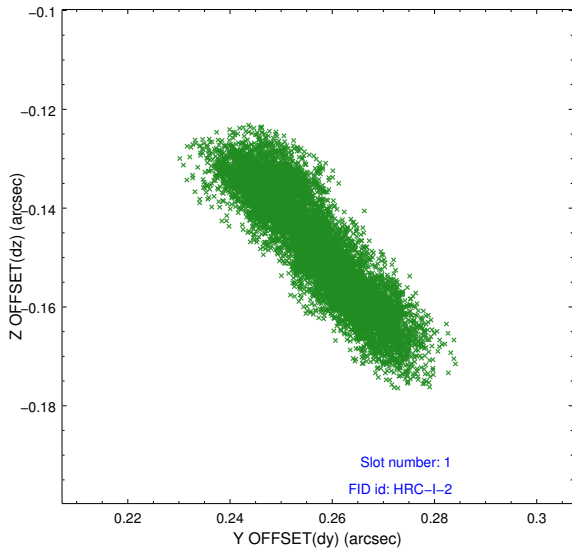


## 2.5 FID Slots

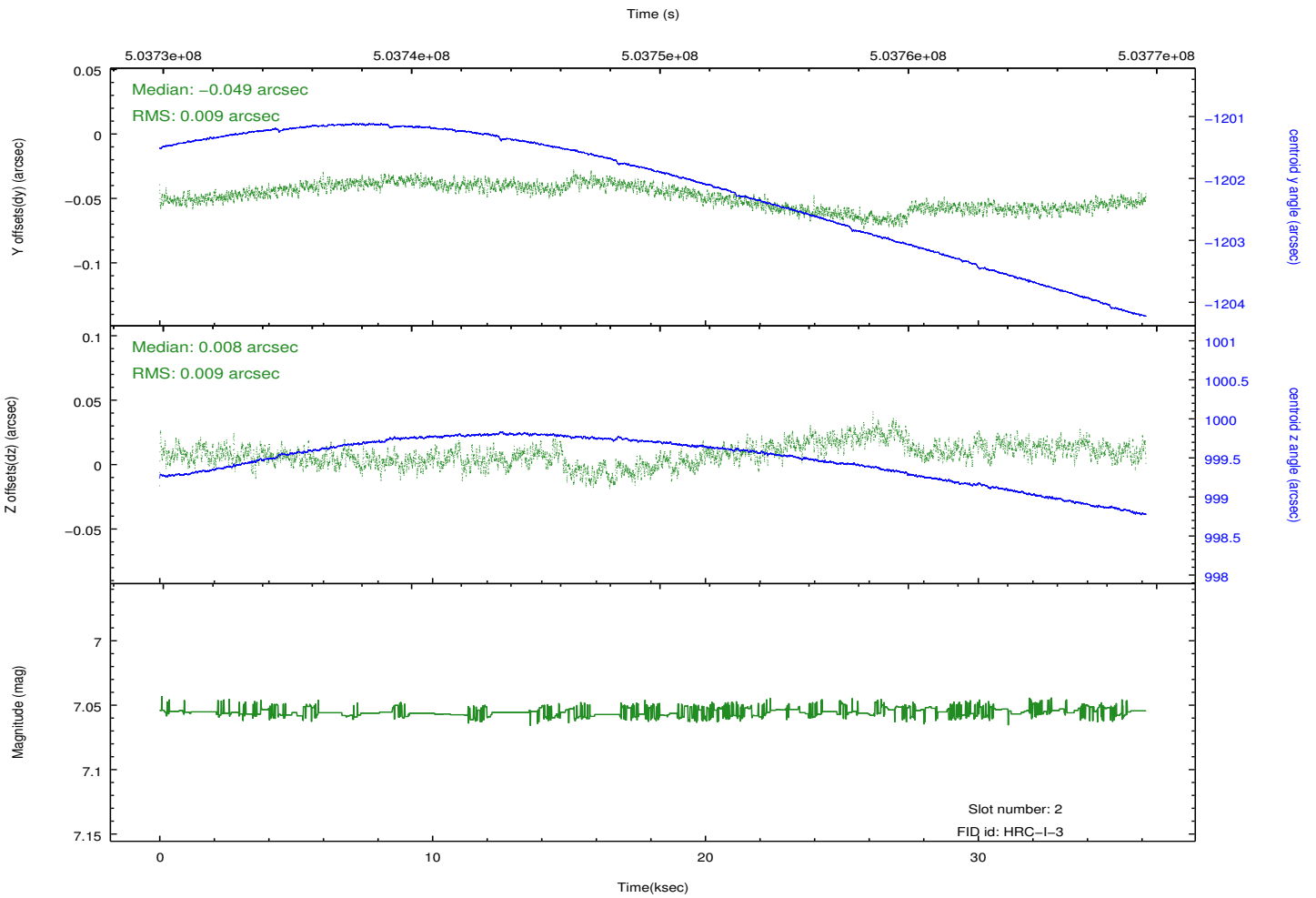
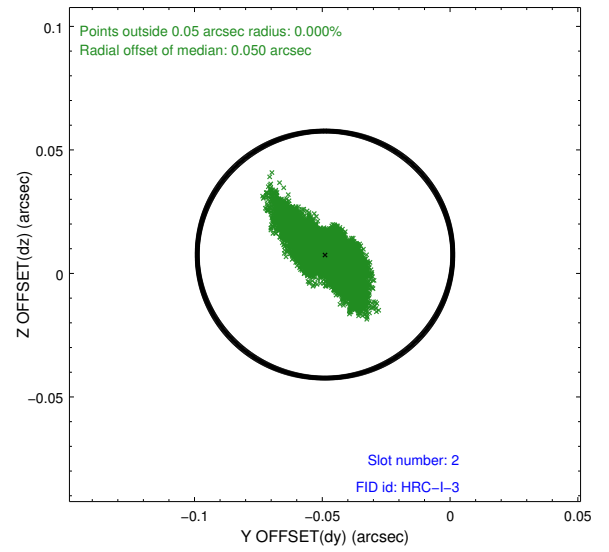
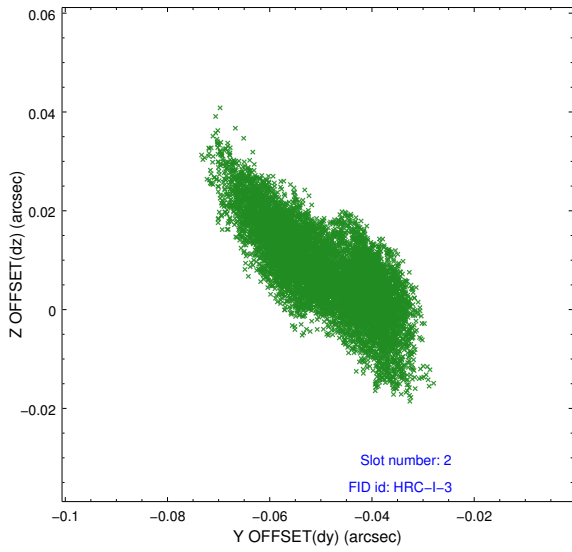
### 2.5.1 Slot 0



## 2.5.2 Slot 1



### 2.5.3 Slot 2



# A Summary

## A.1 Status

V&V Scientist	Beth Sundheim
V&V Date (YYYY-MM-DD)	2014.12.15
V&V Edition	1
V&V Disposition and Status	OK
V&V Charge Time	36.146883232355

## A.2 Comments

These data have been reprocessed with new aspect alignment calibration files that correct small mean offsets (up to 0.4 arcsecs) and improve overall astrometric accuracy. The new calibration was determined using data from the time period being reprocessed and was performed using cross-correlation of X-ray sources with radio and optical counterparts.