

V&V Reference Report

L2 ASCDS Version : 8.4.5

Observation 1631 - L2 Version 3
Chandra X-Ray Center

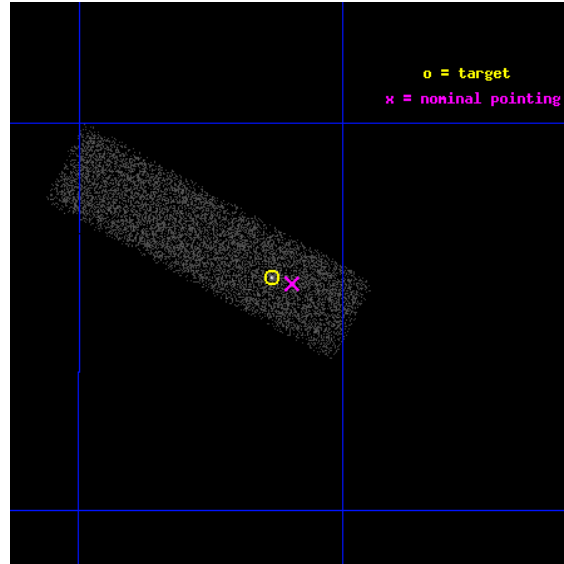
L2 Processing Date : Sep 16 2012

Contents

1	Front	2
2	OBI	3
2.1	OBI	3
2.1.1	Images	3
2.1.2	Bias	3
2.1.3	Parameters	4
2.1.4	Events	4
2.2	Compared Parameters	5
2.3	Aspect	6
2.4	Star Slots	9
2.4.1	Slot 3	9
2.4.2	Slot 4	10
2.4.3	Slot 5	11
2.4.4	Slot 6	12
2.4.5	Slot 7	13
2.5	FID Slots	14
2.5.1	Slot 0	14
2.5.2	Slot 1	15
2.5.3	Slot 2	16
A	Summary	17
A.1	Status	17
A.2	Comments	17

1 Front

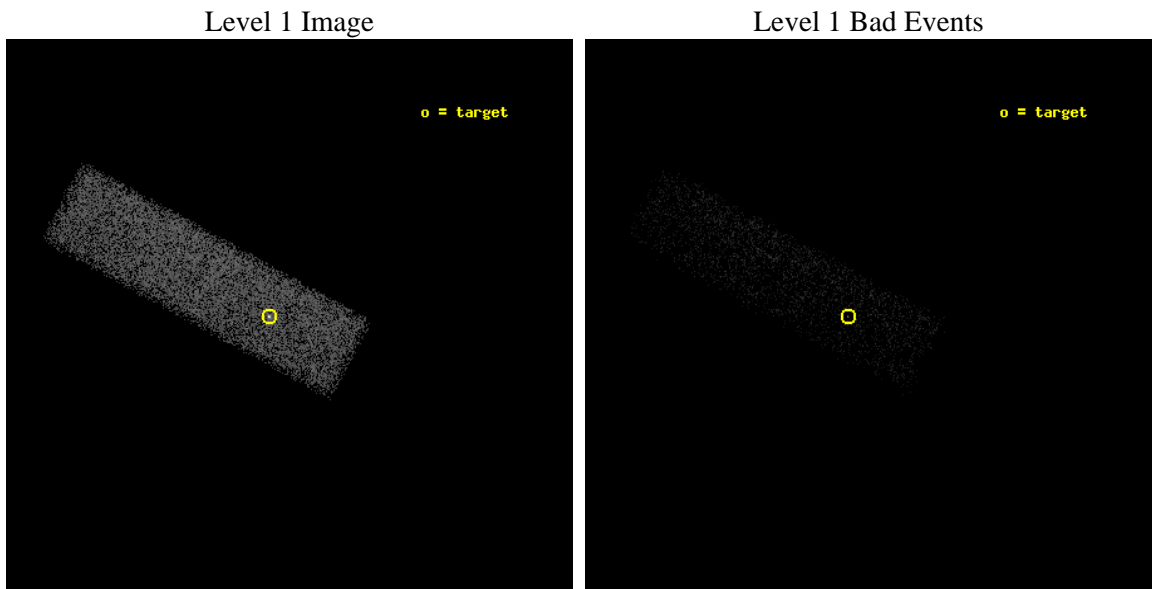
seq_num	700247	Sequence number
obs_id	1631	Observation id
title	FOLLOW - UP ON CHANDRA SURVEY OF GRAVITATIONAL LENSES FOR TIME-DELAY MEASUREMENTS	Proposal title
observer	Professor Gordon Garmire	Principal investigator
object	Q1422+231	Source name
dtcycle	0	
cycle	P	events from which exps? Prim/Second/Both
ra_targ	216.15875	Observer's specified target RA [deg]
dec_targ	22.933611	Observer's specified target Dec [deg]
ra_nom	216.14917853123	Nominal RA [deg]
dec_nom	22.930809639479	Nominal Dec [deg]
roll_nom	208.54023048954	Nominal Roll [deg]
revision	3	Processing version of data
ontime	11197.599958301	Sum of GTIs [s]
livetime	10651.193720442	Livetime [s]
ontime7	11197.599958301	Sum of GTIs [s]
l2events	11991	Number of level 2 events



2 OBI

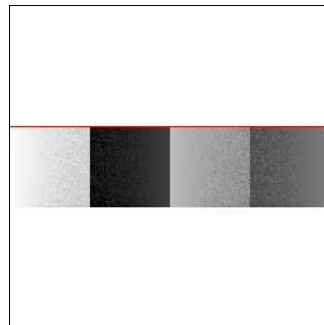
2.1 OBI

2.1.1 Images



2.1.2 Bias

Chip 7



2.1.3 Parameters

obi_num	0	Obi number	sched_exp_time	11000.000000	[s] Scheduled observation exposure time
ascdsver	8.4.5	Processing system revision	ontime	11197.599958301	Sum of GTIs [s]
caldbver	4.5.1.1	 	ontime7	11197.599958301	Sum of GTIs [s]
date	2012-09-16T23:01:52	Date and time of file creation	l1events	27676	Number of level 1 events
revision	3	Processing version of data			

2.1.4 Events

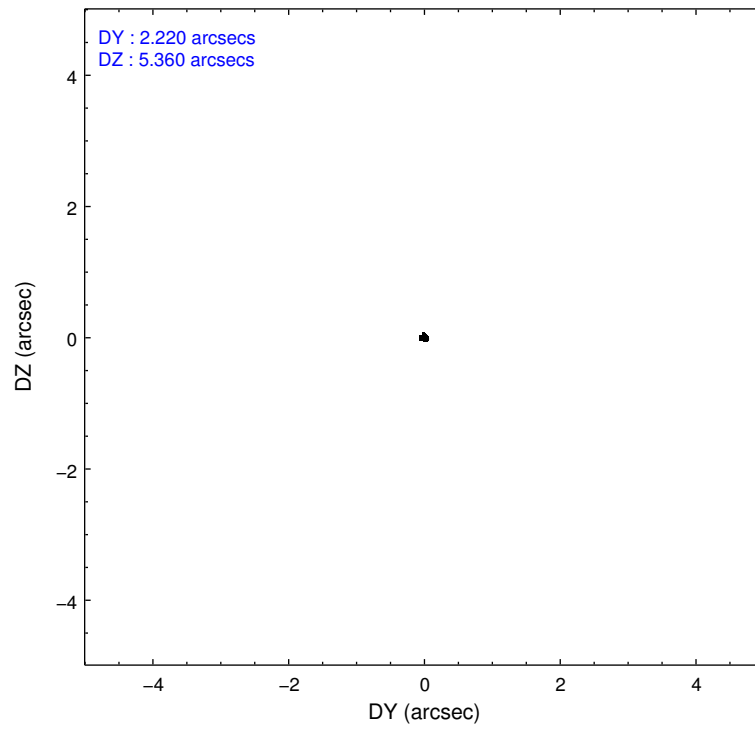
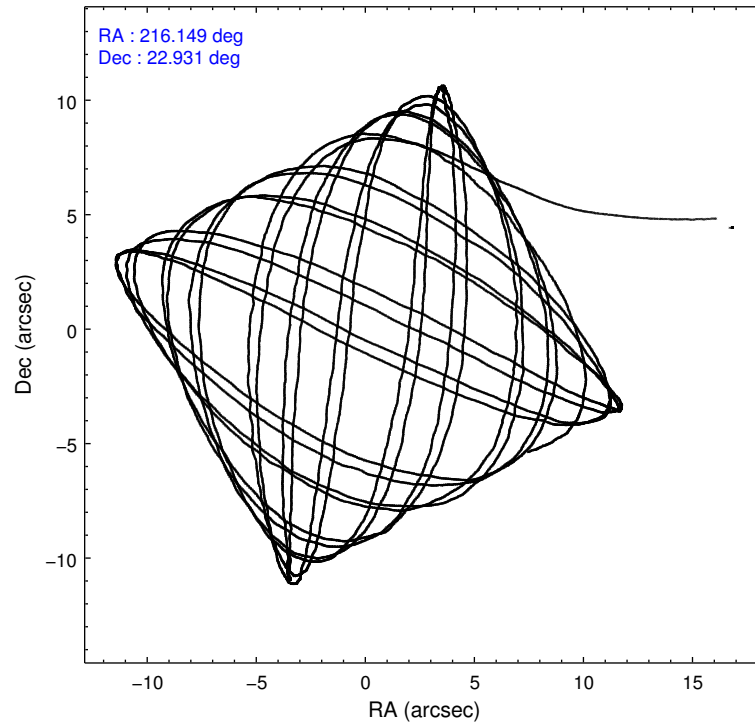
	ccd 7
level 1 events	27676
rejected events	15329
rejected %	55%

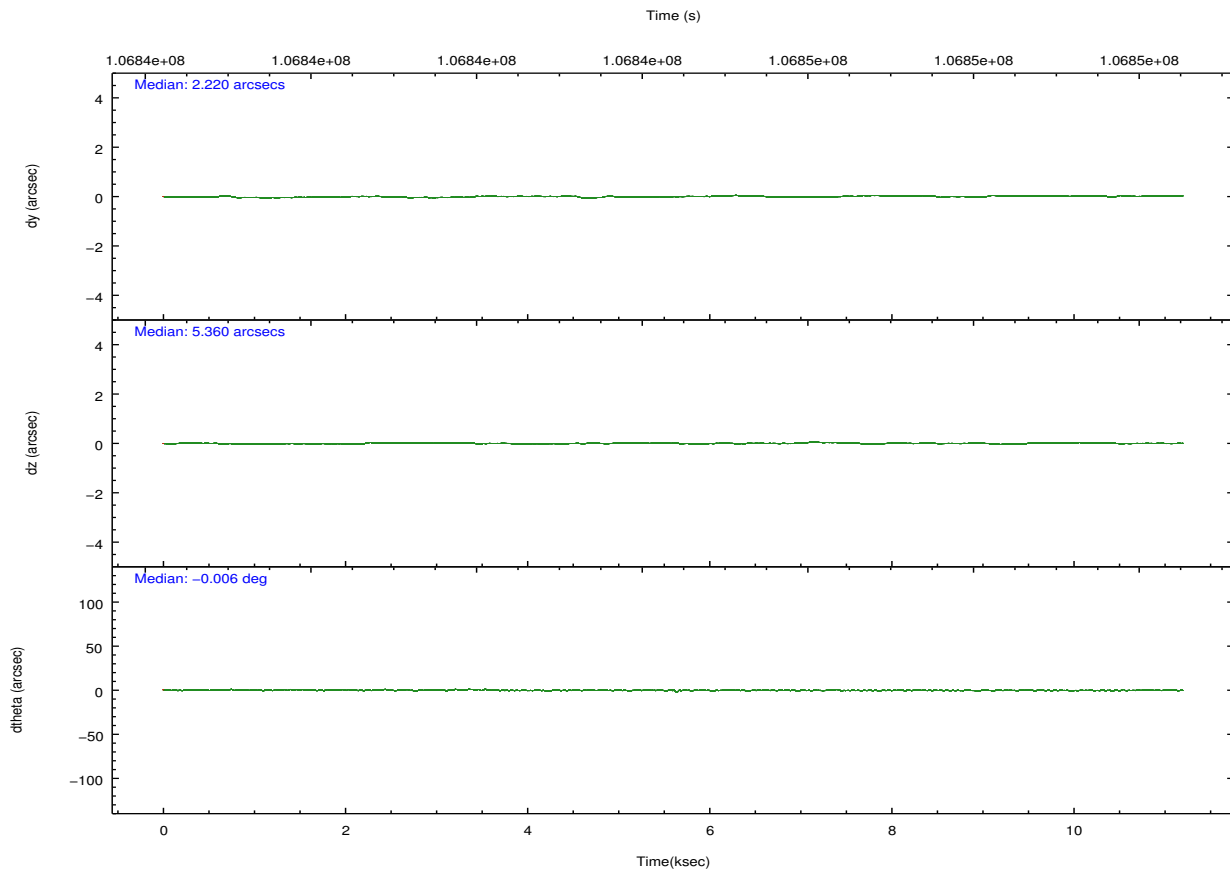
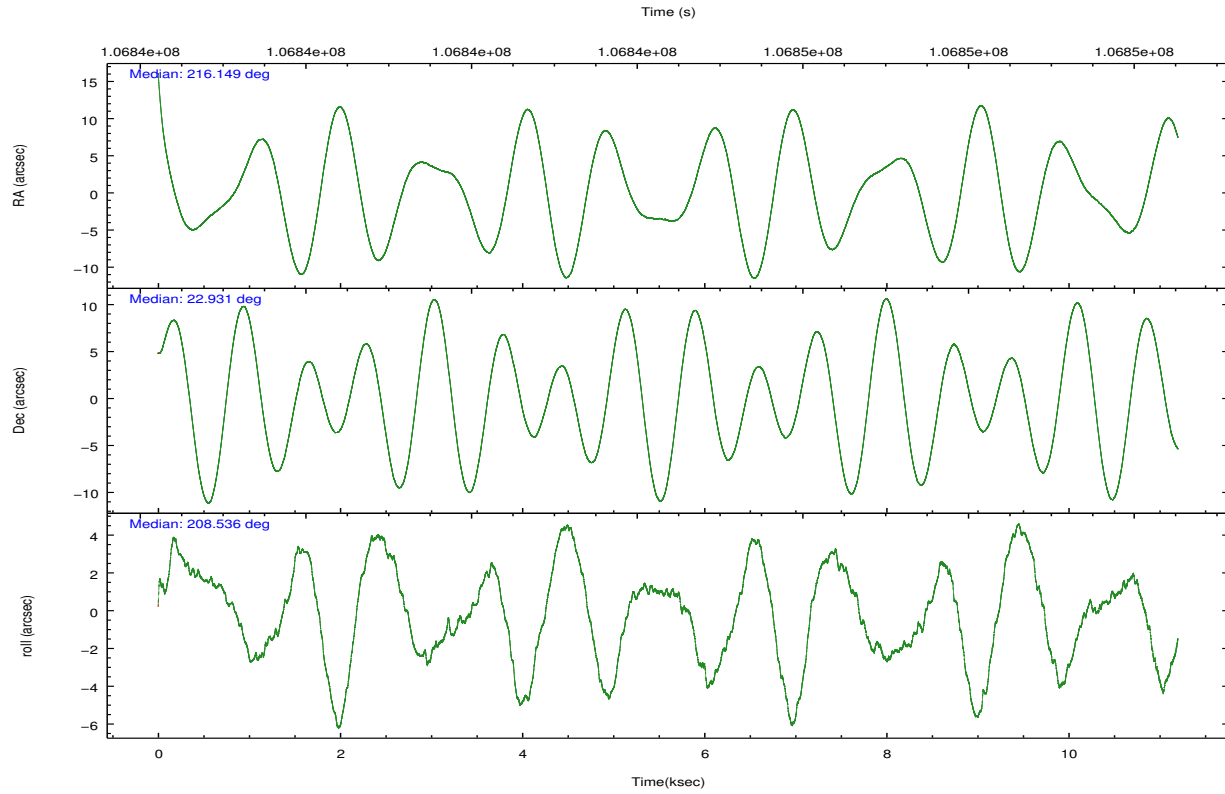
	ccd 7
grade 0 events	1803
	6%
grade 1 events	39
	0%
grade 2 events	2641
	9%
grade 3 events	1556
	5%
grade 4 events	1508
	5%
grade 5 events	2480
	8%
grade 6 events	5892
	21%
grade 7 events	11757
	42%

2.2 Compared Parameters

Parameter	Planned	Actual	Parameter	Planned	Actual
Instrument	ACIS	ACIS	Obspar format version number	7	7
Detector	ACIS-7	ACIS-7	Obspar file type	PREDICTED	ACTUAL
Grating	NONE	NONE	Obspar update status	NONE	UPDATED
Data mode	FAINT	FAINT	Number of optional ACIS chips dropped	0	0
Observation mode	POINTING	POINTING	On-chip summing requested	N	N
[deg] Pointing RA	216.164359	216.1491785312313	Subarray requested	CUSTOM	1/4
[deg] Pointing Dec	22.954209	22.93080963947919	Subarray start row	384	384
[deg] Pointing Roll	208.377675	208.5402304895369	Subarray row count	256	256
[mm] SIM focus pos	-0.684267	-0.6828225247311905	Alternating exposures requested	N	N
[mm] SIM defocus	0	0.001444936568705701	[s] Primary exposure time	0.000000	0.8
[mm] SIM translation stage pos	-190.132523	-190.145094680475			
[mm] SIM translation stage offset	0	0.01257209746719923			
[s] Observation start time (MET)	106838972.184000	106837701.75795			
Observation start date	2001-05-21T13:28:28	2001-05-21T13:08:21			
[s] Observation end time (MET)	106849972.184000	106850394.33344			
Observation end date	2001-05-21T16:31:48	2001-05-21T16:39:54			
Read mode	TIMED	TIMED			

2.3 Aspect



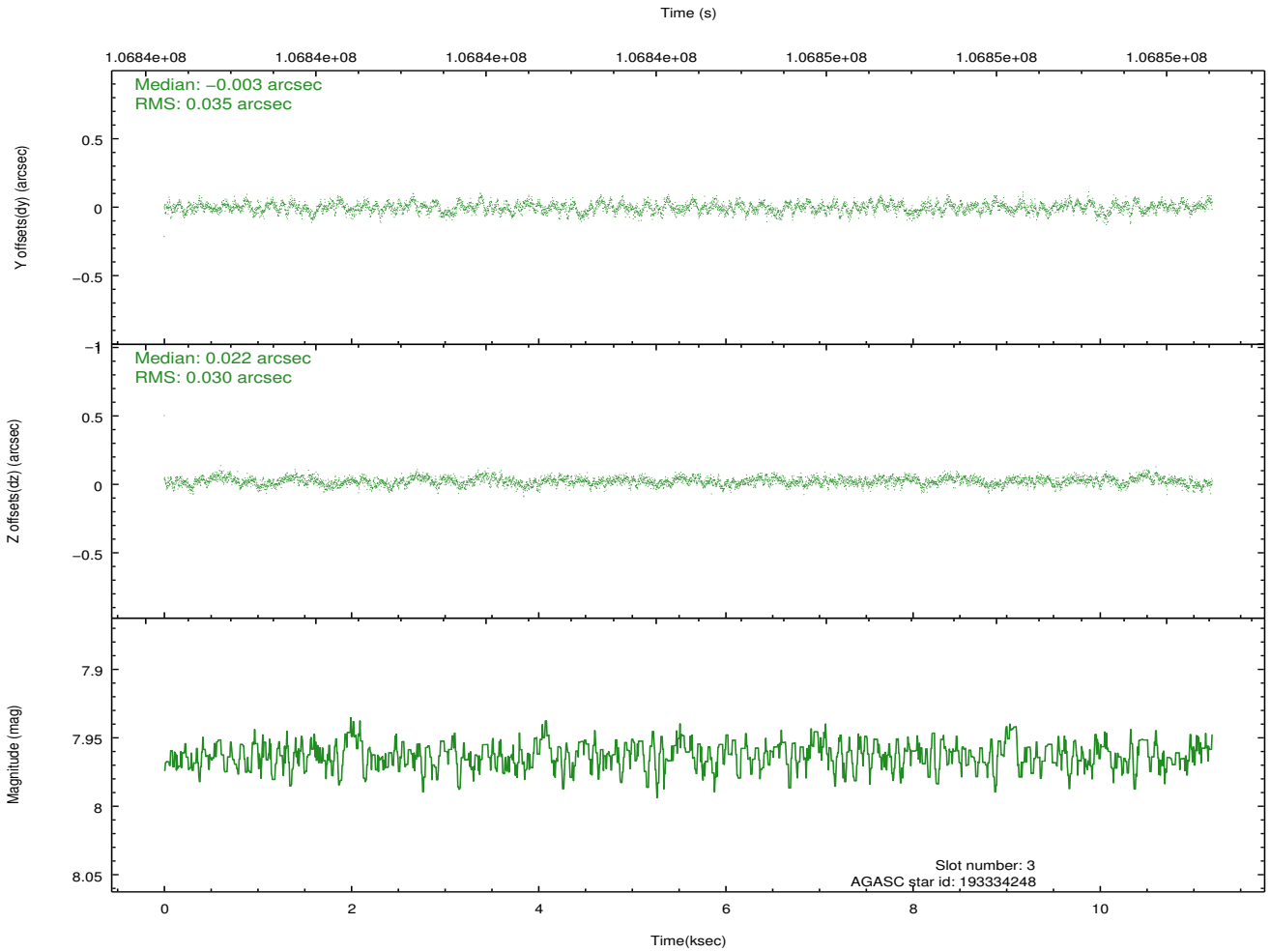
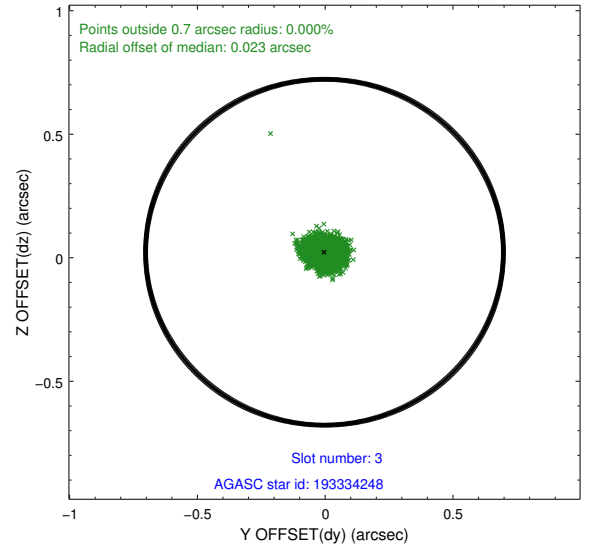
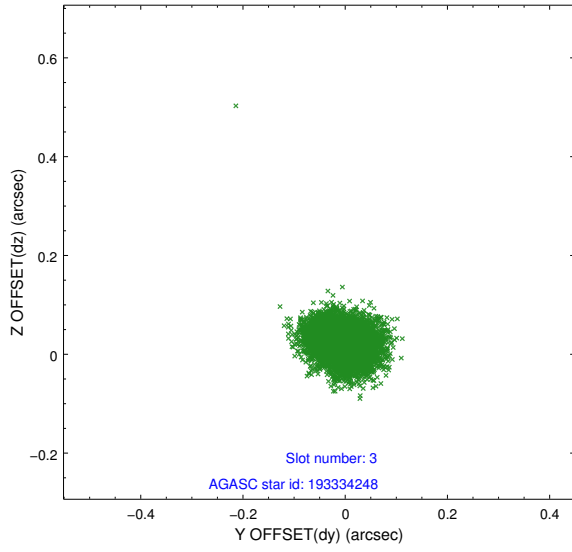


Slot Statistics

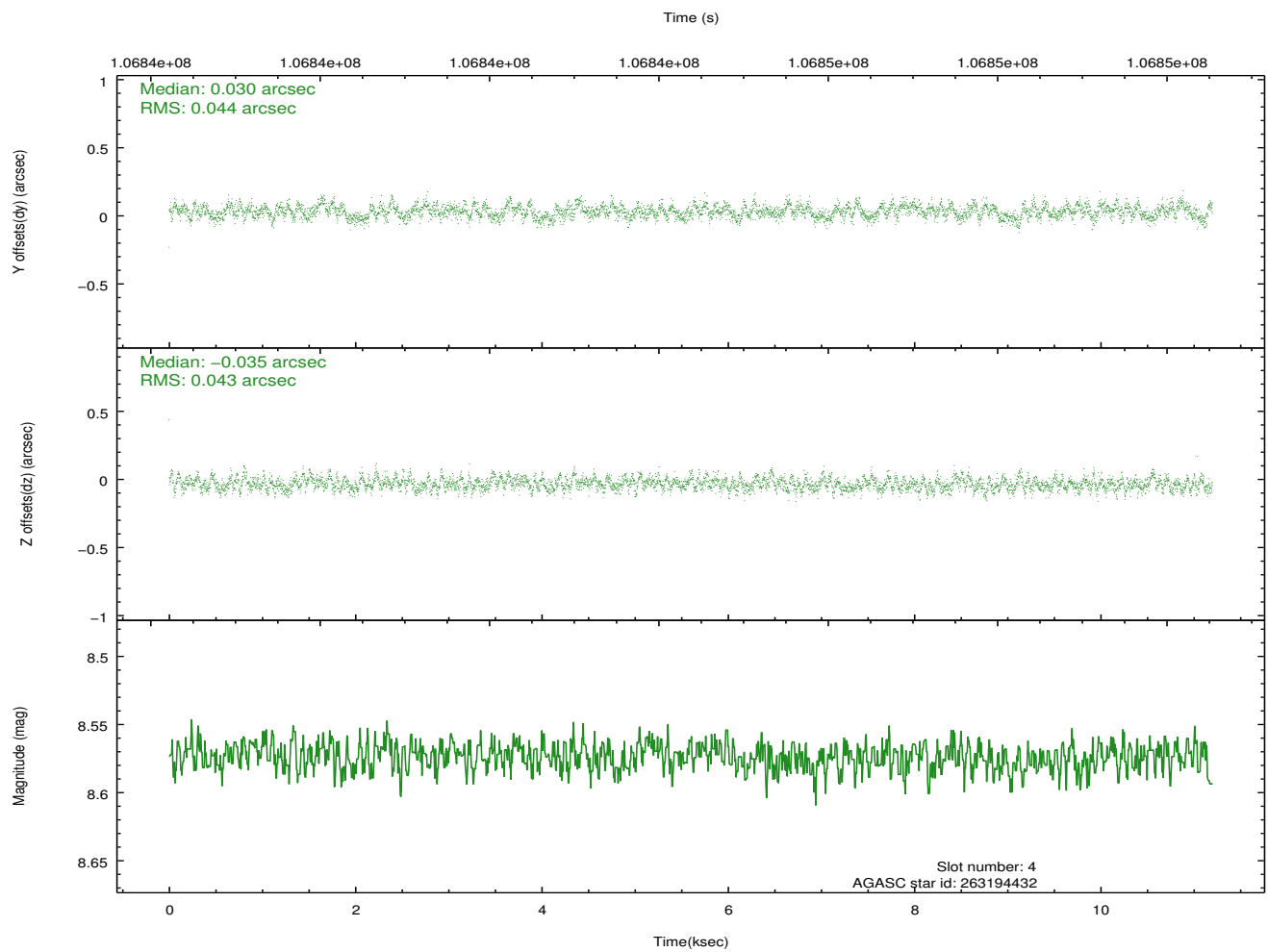
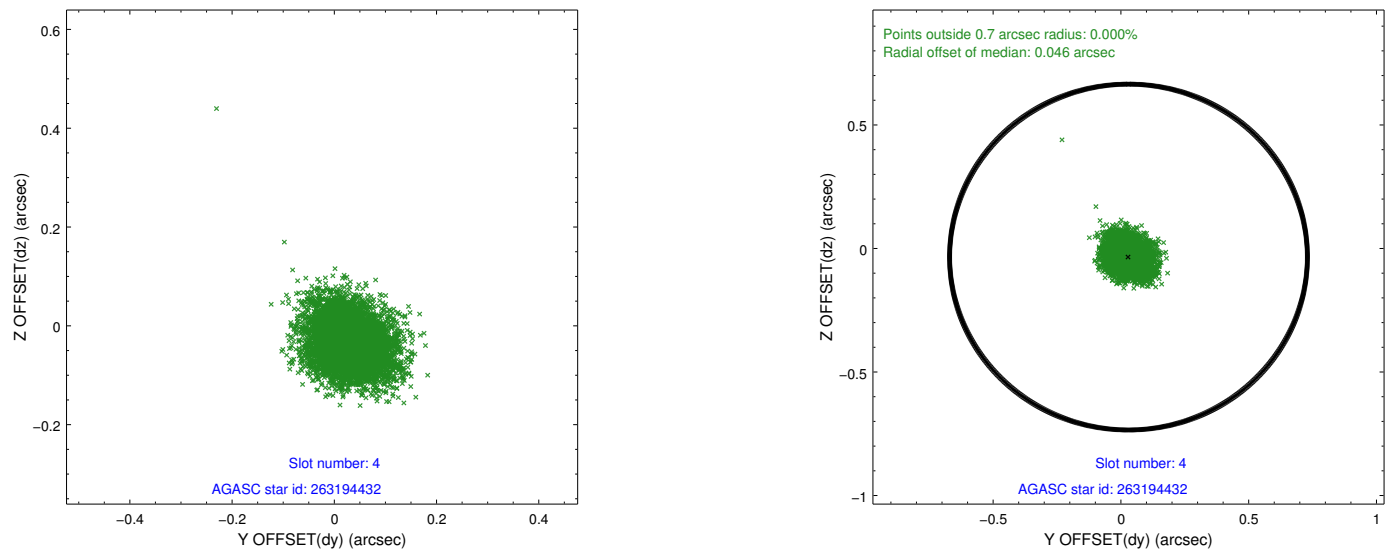
slot	status	id	mag	n_pts	med_dy	med_dz	dr1	dr2	ra	dec	mean_y	mean_z
0	FID	ACIS-S-2	7.11	2732	-0.036	-0.002	0.007	0.011	0.000000	0.000000	-754.83	-1726.40
1	FID	ACIS-S-4	7.20	2732	-0.029	0.018	0.005	0.010	0.000000	0.000000	2158.20	181.71
2	FID	ACIS-S-5	7.24	2731	0.034	-0.007	0.007	0.011	0.000000	0.000000	-1807.06	175.77
3	GUIDE	193334248	7.96	5463	-0.003	0.022	0.048	0.078	215.839819	22.271930	2118.21	1646.78
4	GUIDE	263194432	8.57	5461	0.030	-0.035	0.065	0.105	216.192636	22.671847	401.02	939.69
5	GUIDE	263196048	8.70	5463	0.010	0.043	0.062	0.101	216.468737	22.828170	-673.22	878.88
6	GUIDE	263198168	8.84	5464	-0.025	-0.003	0.080	0.130	216.844674	22.716629	-1583.74	1822.00
7	GUIDE	263200584	9.67	5461	-0.005	-0.031	0.099	0.165	215.715152	23.220906	850.16	-1552.31

2.4 Star Slots

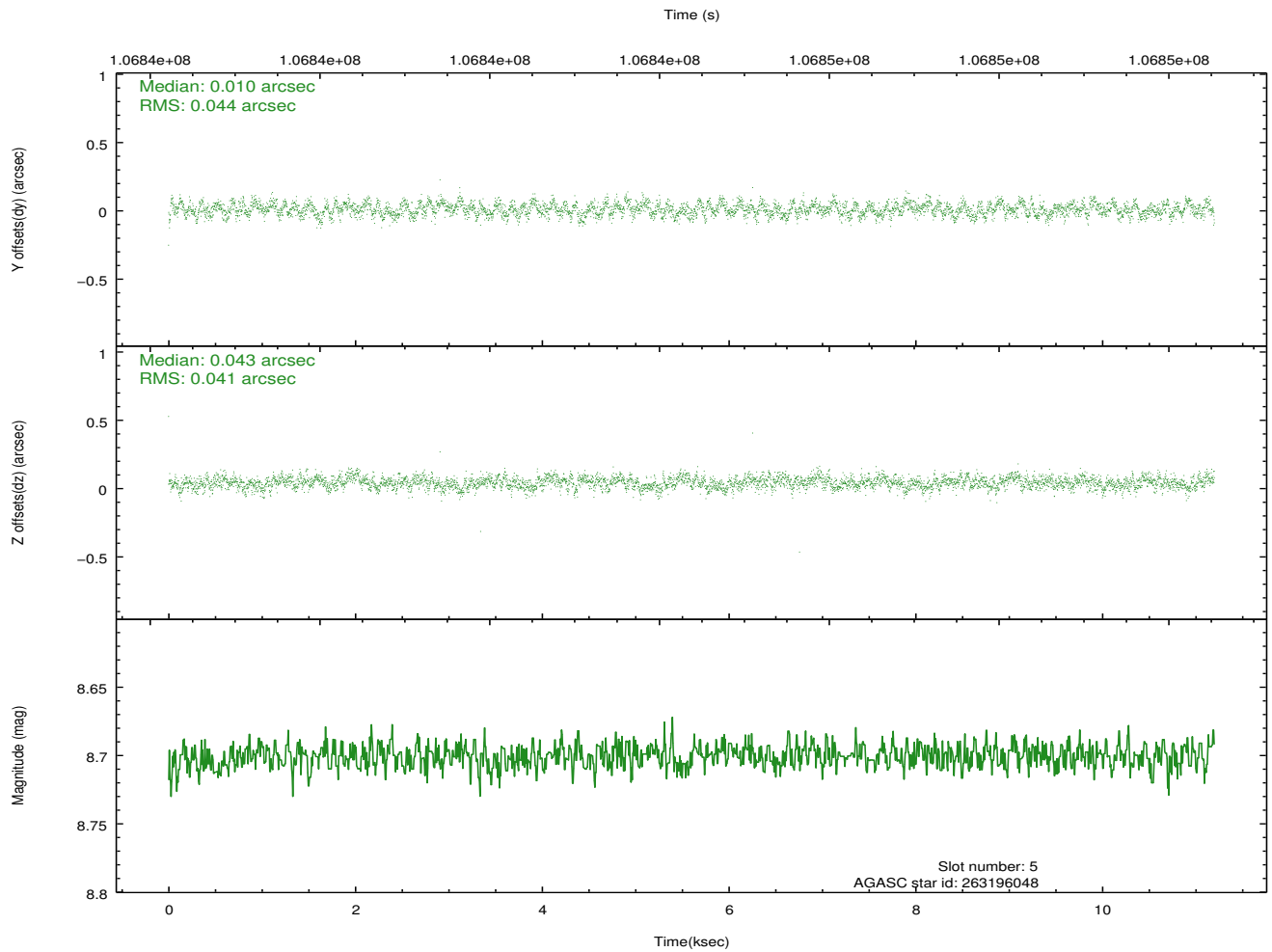
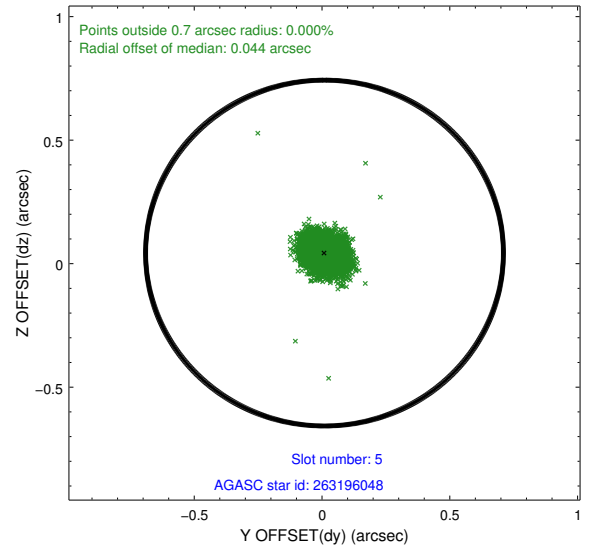
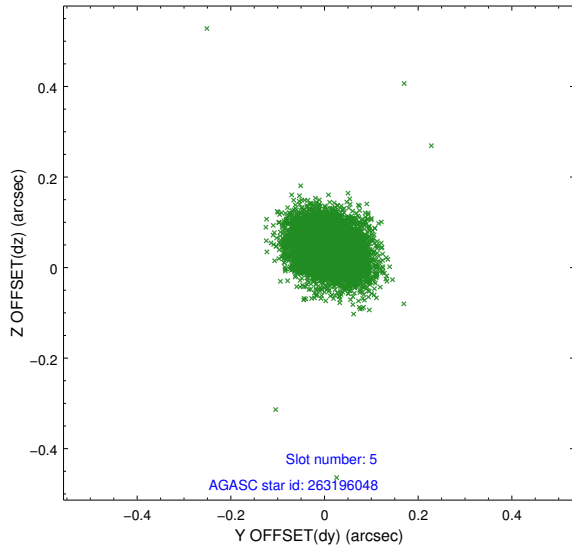
2.4.1 Slot 3



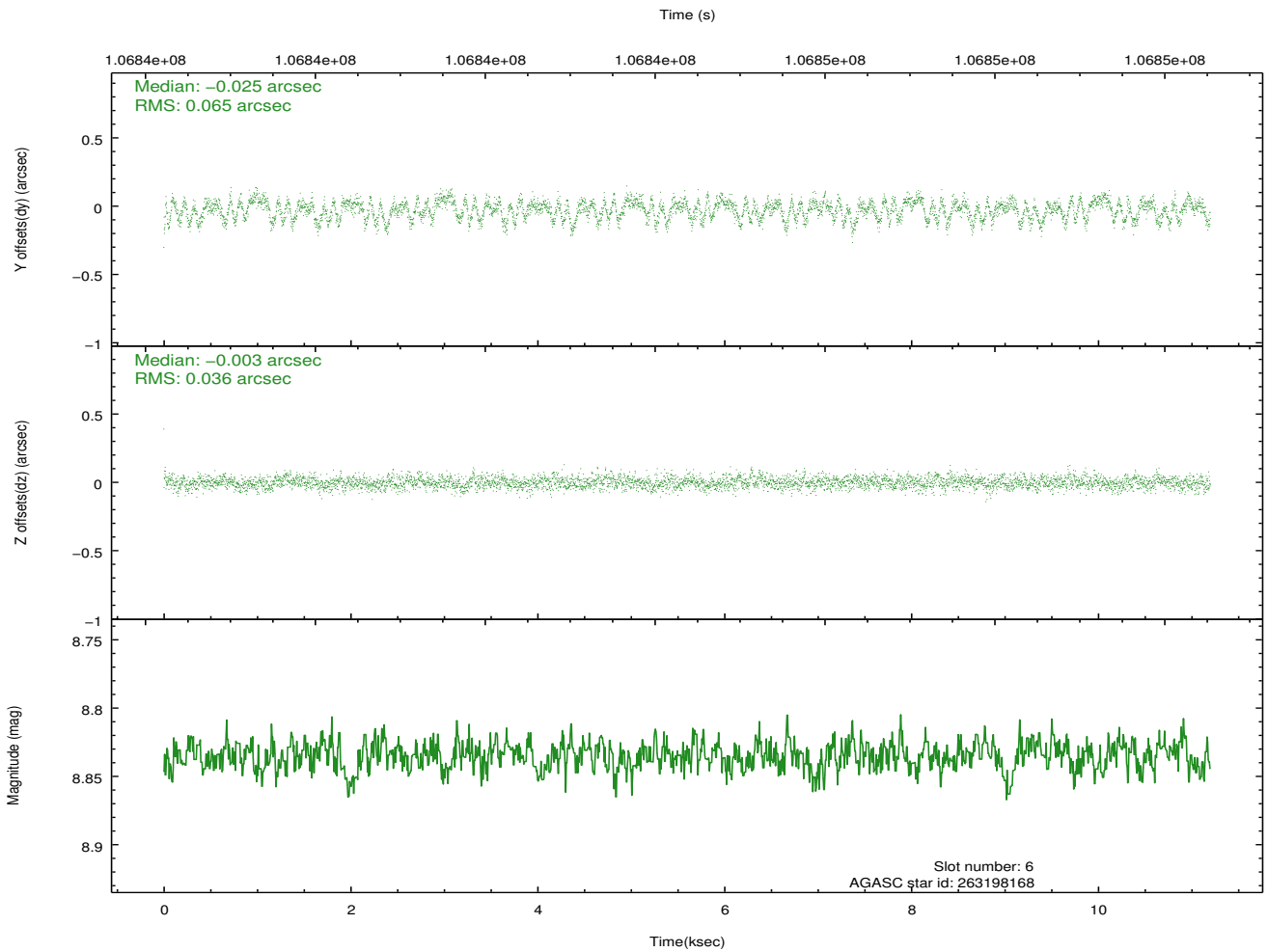
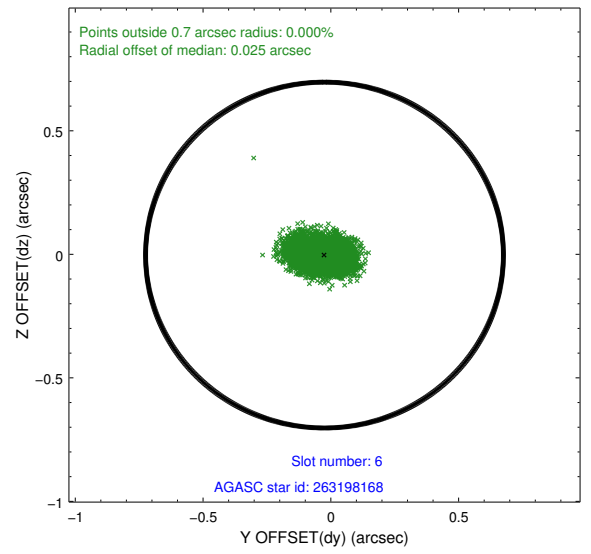
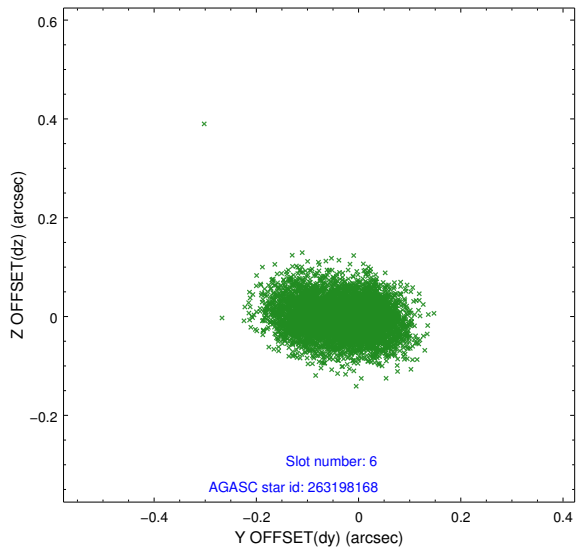
2.4.2 Slot 4



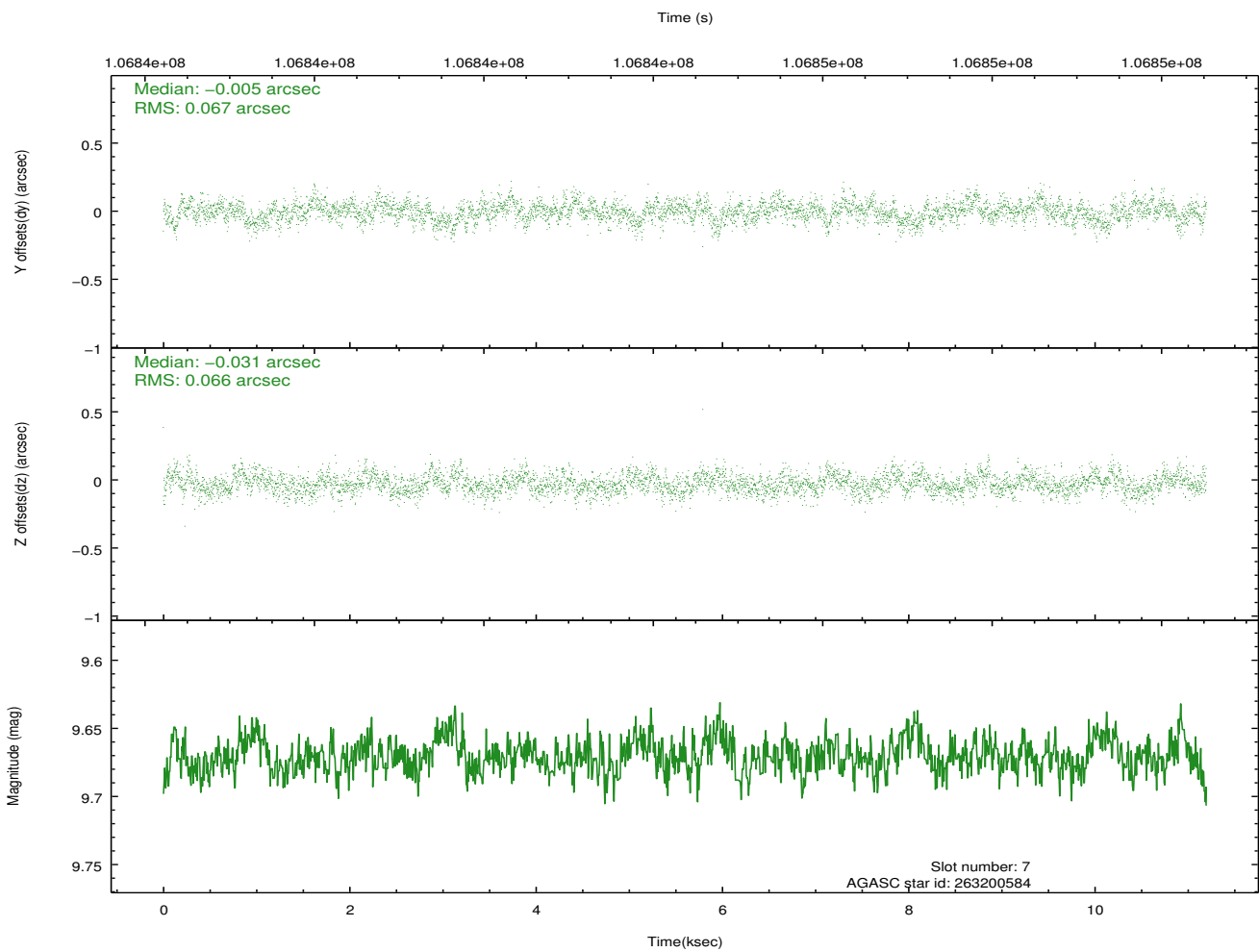
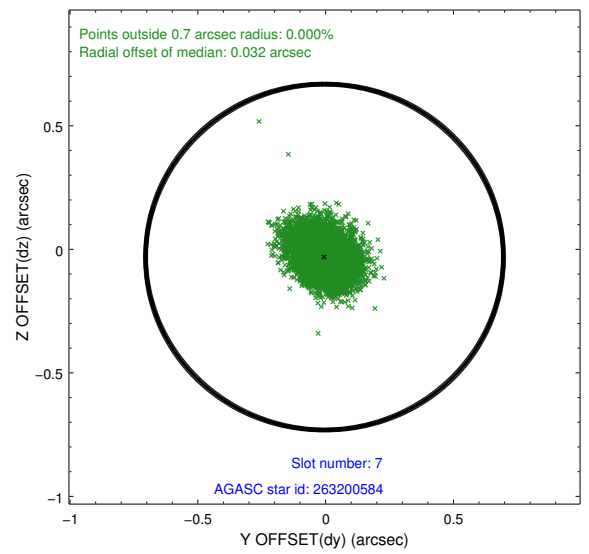
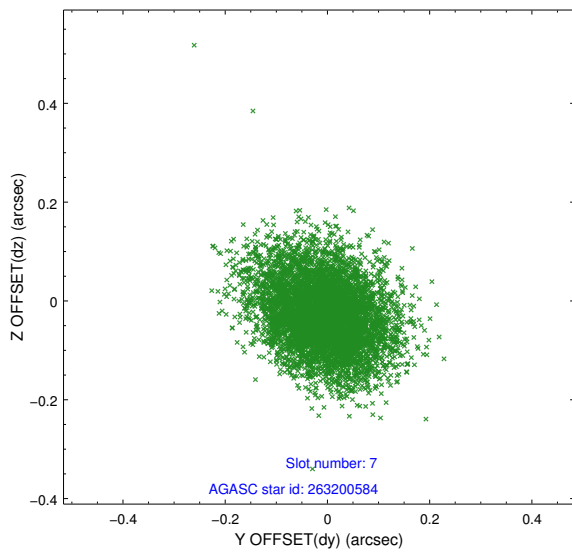
2.4.3 Slot 5



2.4.4 Slot 6

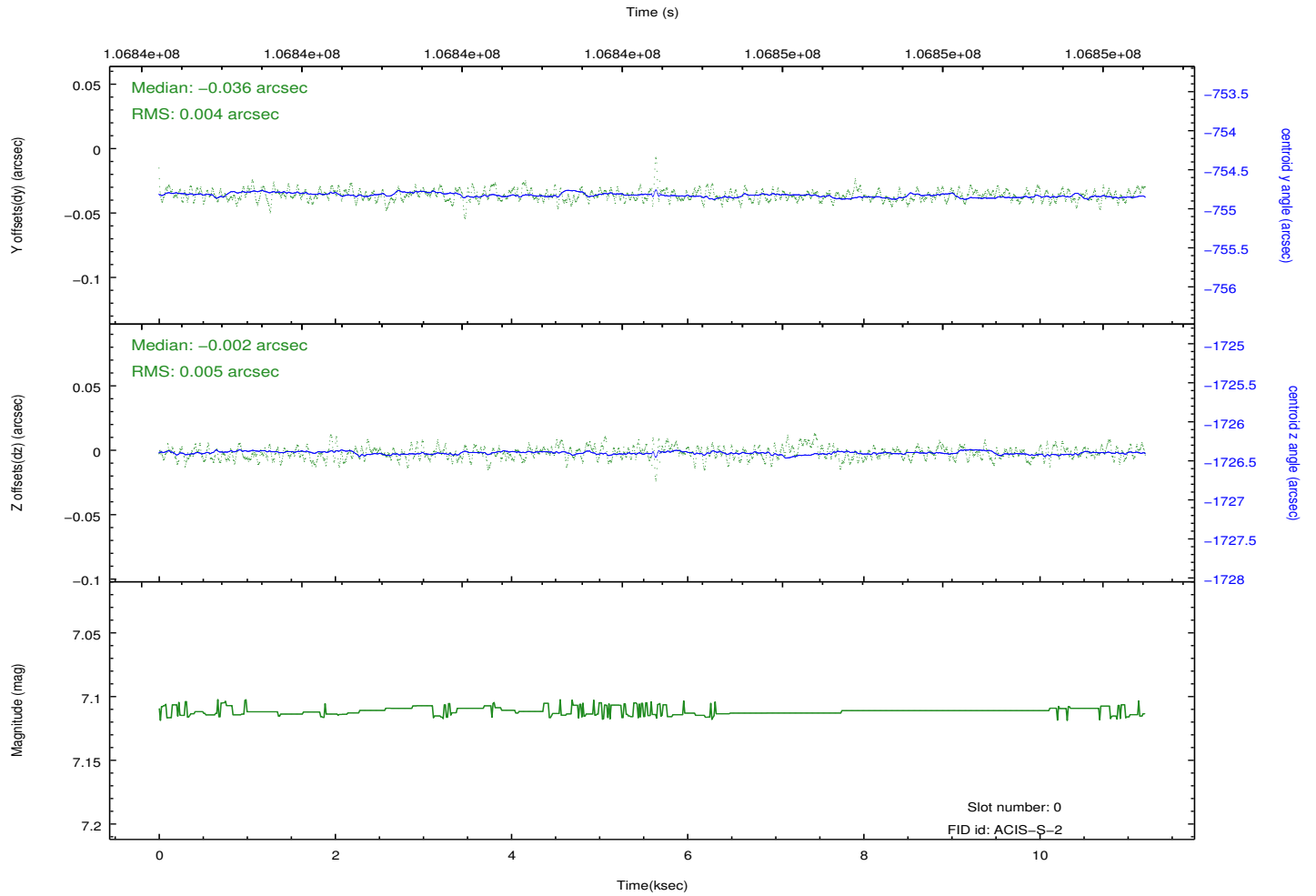
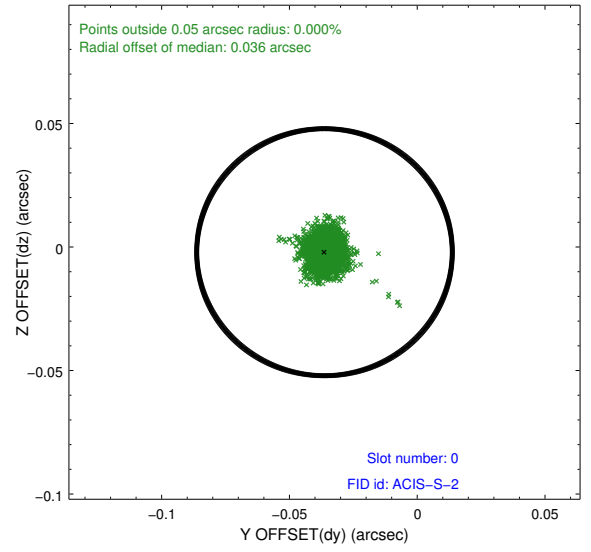
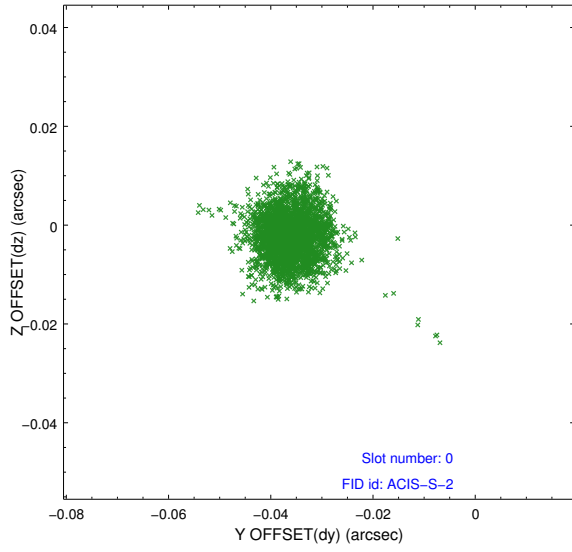


2.4.5 Slot 7

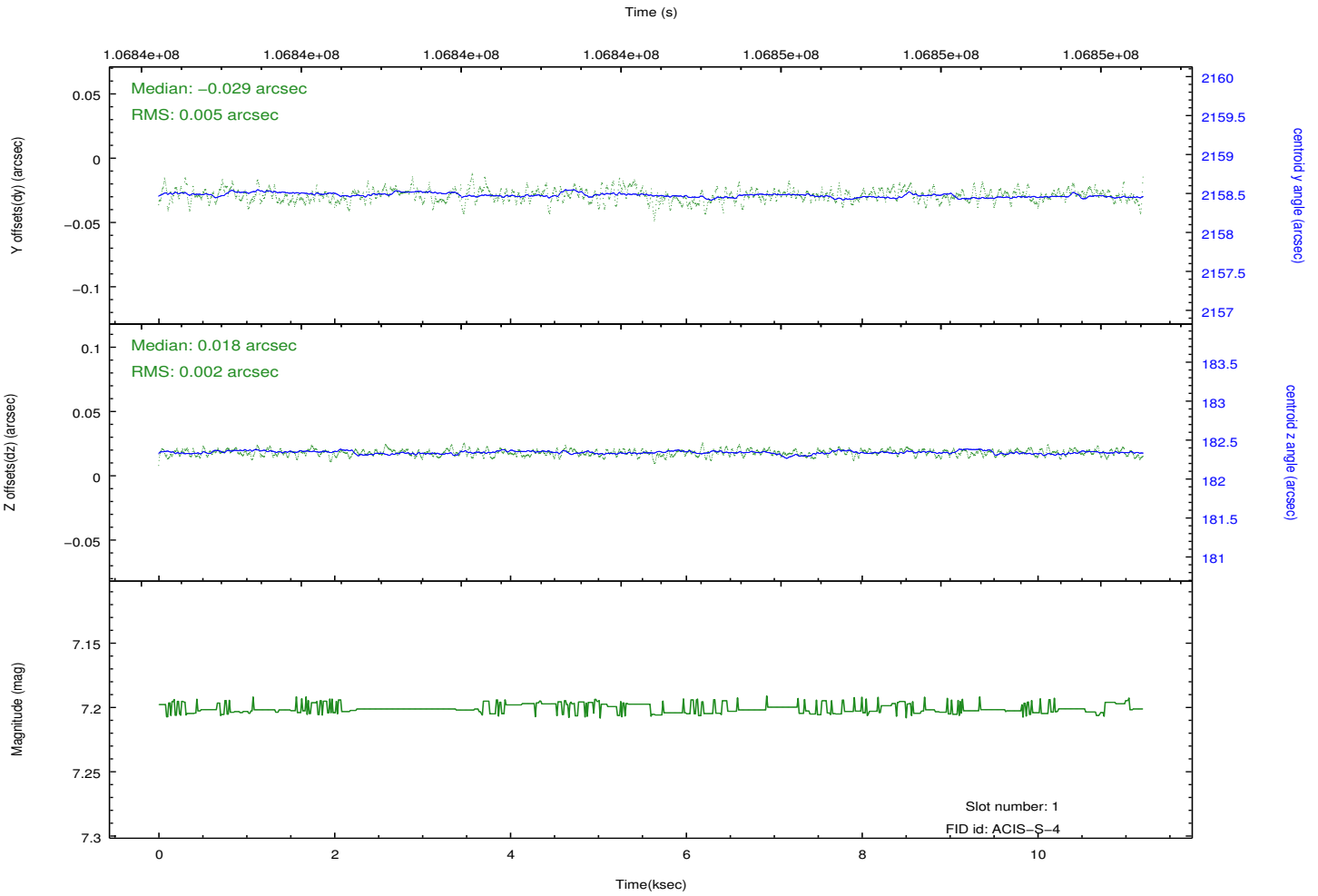
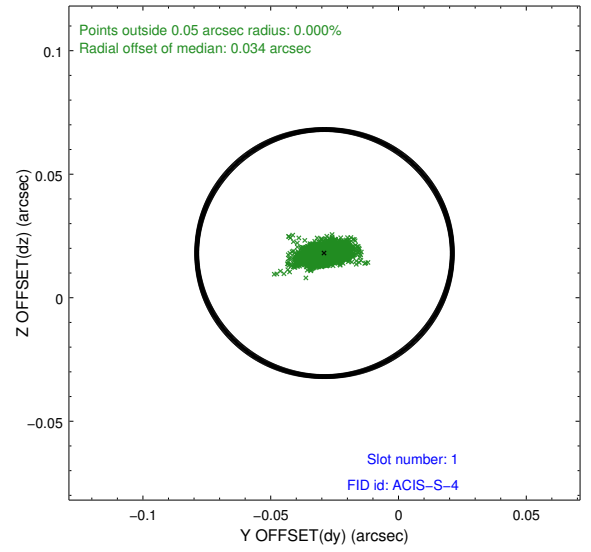
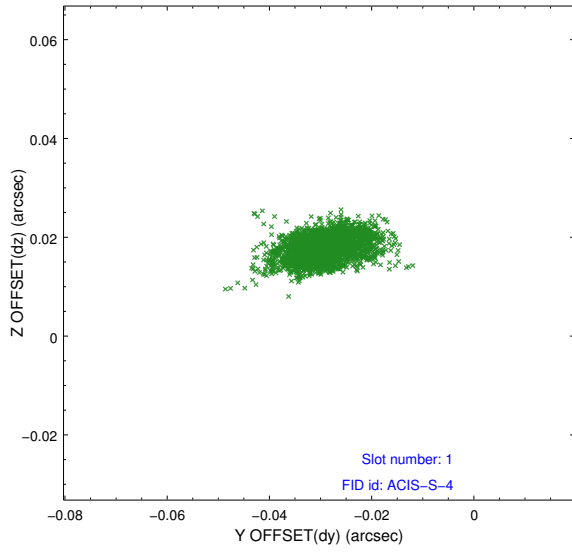


2.5 FID Slots

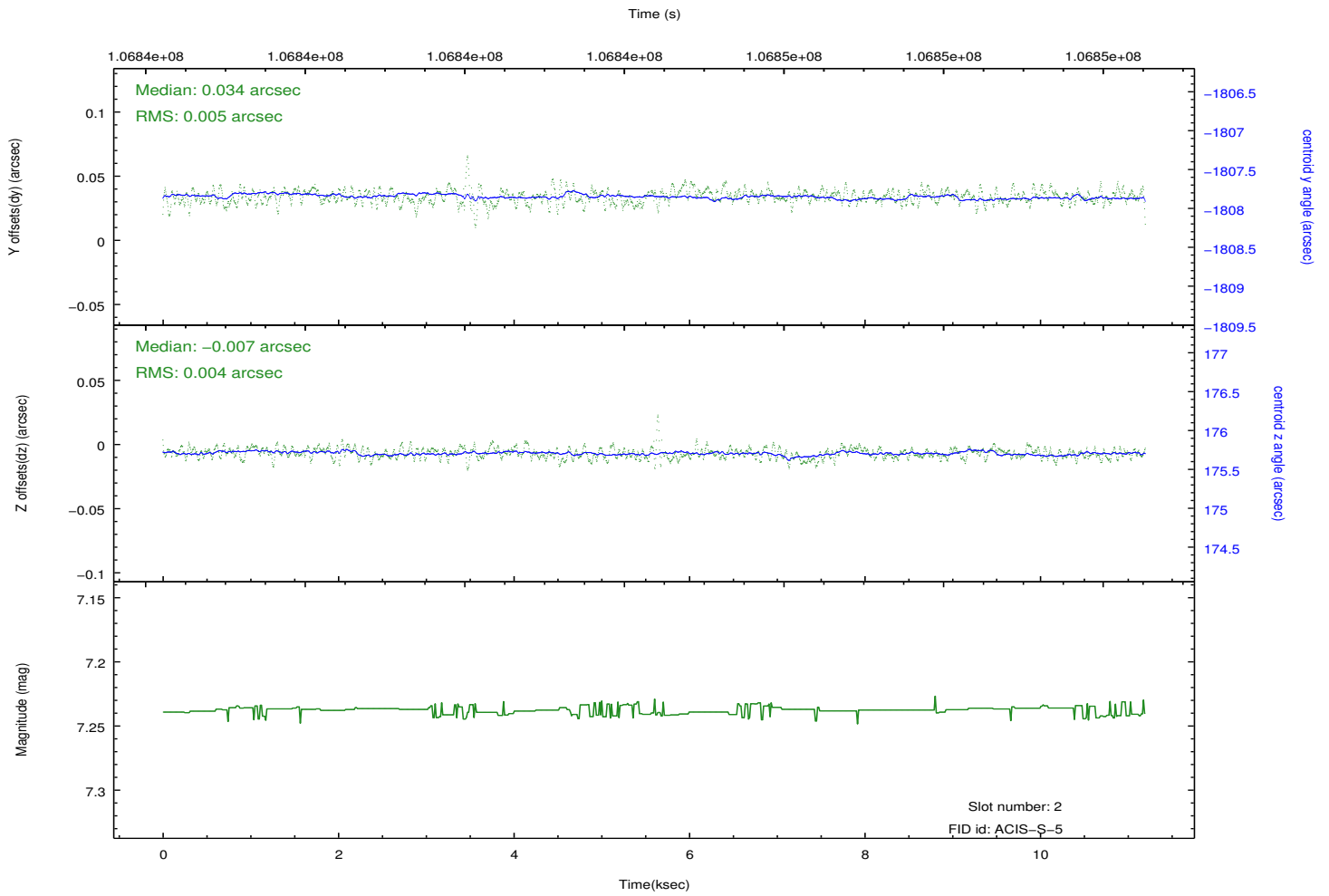
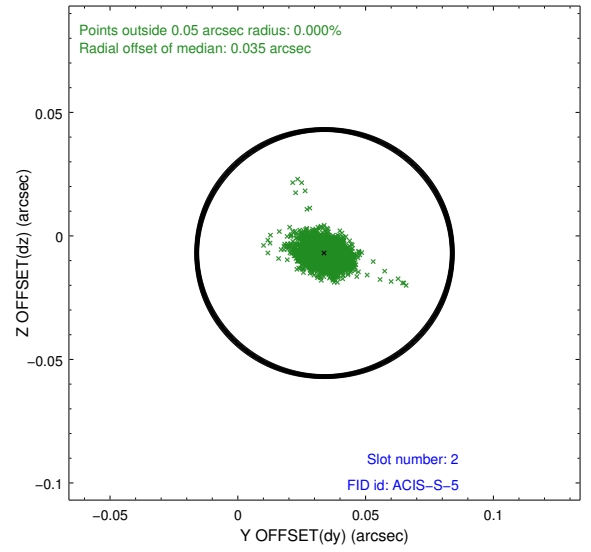
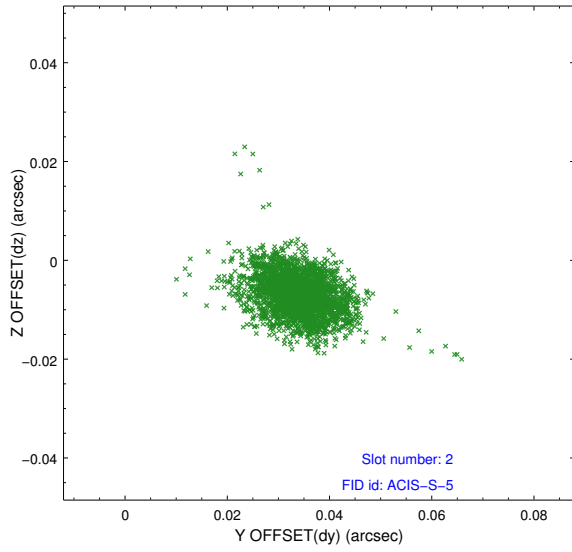
2.5.1 Slot 0



2.5.2 Slot 1



2.5.3 Slot 2



A Summary

A.1 Status

V&V Scientist	Jen Lauer
V&V Date (YYYY-MM-DD)	2012.09.19
V&V Edition	1
V&V Disposition and Status	OK
V&V Charge Time	11.2

A.2 Comments