

V&V Reference Report

L2 ASCDS Version : 8.4.5

Observation 1721 - L2 Version 4
Chandra X-Ray Center

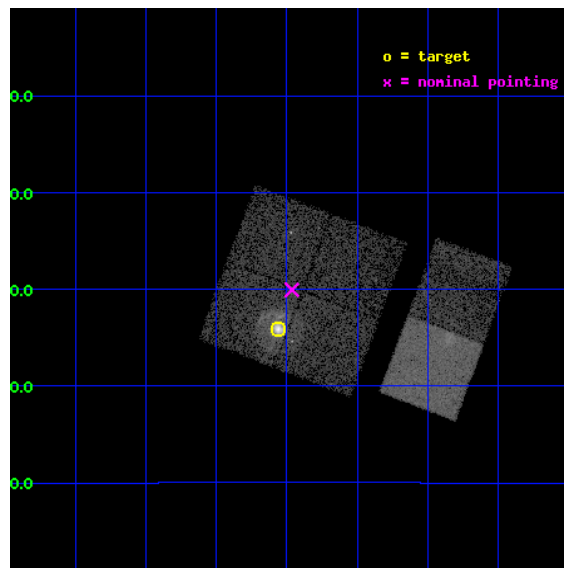
L2 Processing Date : Aug 28 2012

Contents

1	Front	2
2	OBI	3
2.1	OBI	3
2.1.1	Images	3
2.1.2	Bias	3
2.1.3	Parameters	4
2.1.4	Events	4
2.2	Compared Parameters	5
2.3	Aspect	6
2.4	Star Slots	9
2.4.1	Slot 3	9
2.4.2	Slot 4	10
2.4.3	Slot 5	11
2.4.4	Slot 6	12
2.4.5	Slot 7	13
2.5	FID Slots	14
2.5.1	Slot 0	14
2.5.2	Slot 1	15
2.5.3	Slot 2	16
A	Summary	17
A.1	Status	17
A.2	Comments	17

1 Front

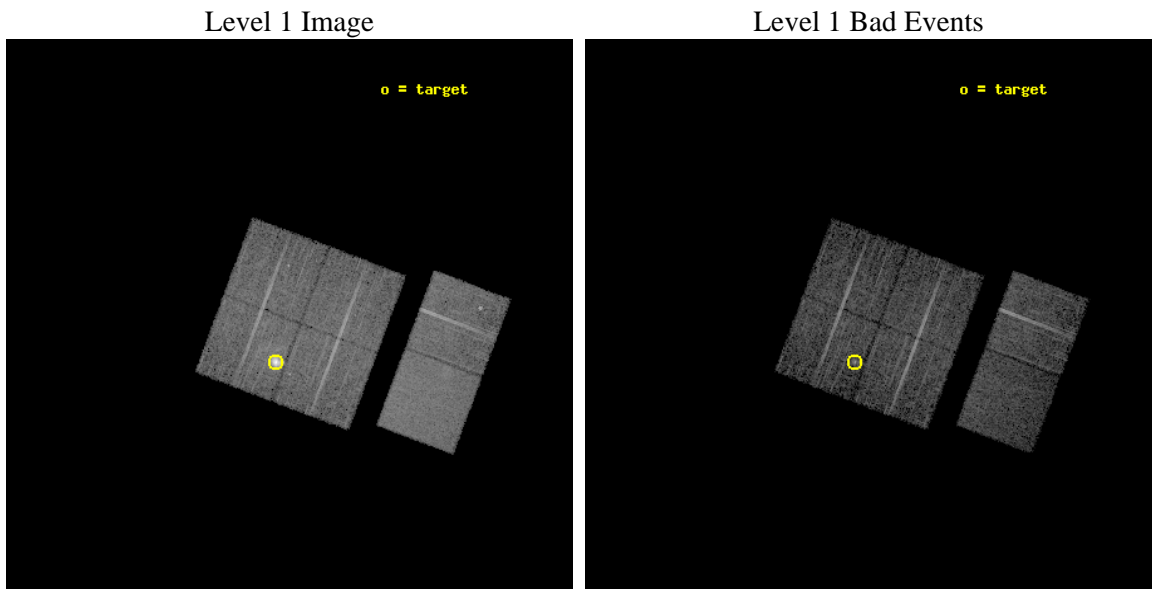
seq_num	590174	Sequence number
obs_id	1721	Observation id
title	HRC RESPONSE TO CONTINUUM SOURCE.	Proposal title
observer	Dr. CXC Calibration	Principal investigator
object	G21.5-0.9 [Chip I1, T=120, Offsets=-4,0,-1]	Source name
dtcycle	0	
cycle	P	events from which exps? Prim/Second/Both
ra_targ	278.389583	Observer's specified target RA [deg]
dec_targ	-10.568528	Observer's specified target Dec [deg]
ra_nom	278.36606007823	Nominal RA [deg]
dec_nom	-10.501149282679	Nominal Dec [deg]
roll_nom	110.65116875057	Nominal Roll [deg]
revision	4	Processing version of data
ontime	7664.0000071228	Sum of GTIs [s]
livetime	7566.9538243258	Livetime [s]
ontime0	7664.0000071228	Sum of GTIs [s]
ontime1	7664.0000071228	Sum of GTIs [s]
ontime2	7664.0000071228	Sum of GTIs [s]
ontime3	7664.0000071228	Sum of GTIs [s]
ontime6	7664.0000071228	Sum of GTIs [s]
ontime7	7664.0000071228	Sum of GTIs [s]
l2events	79509	Number of level 2 events



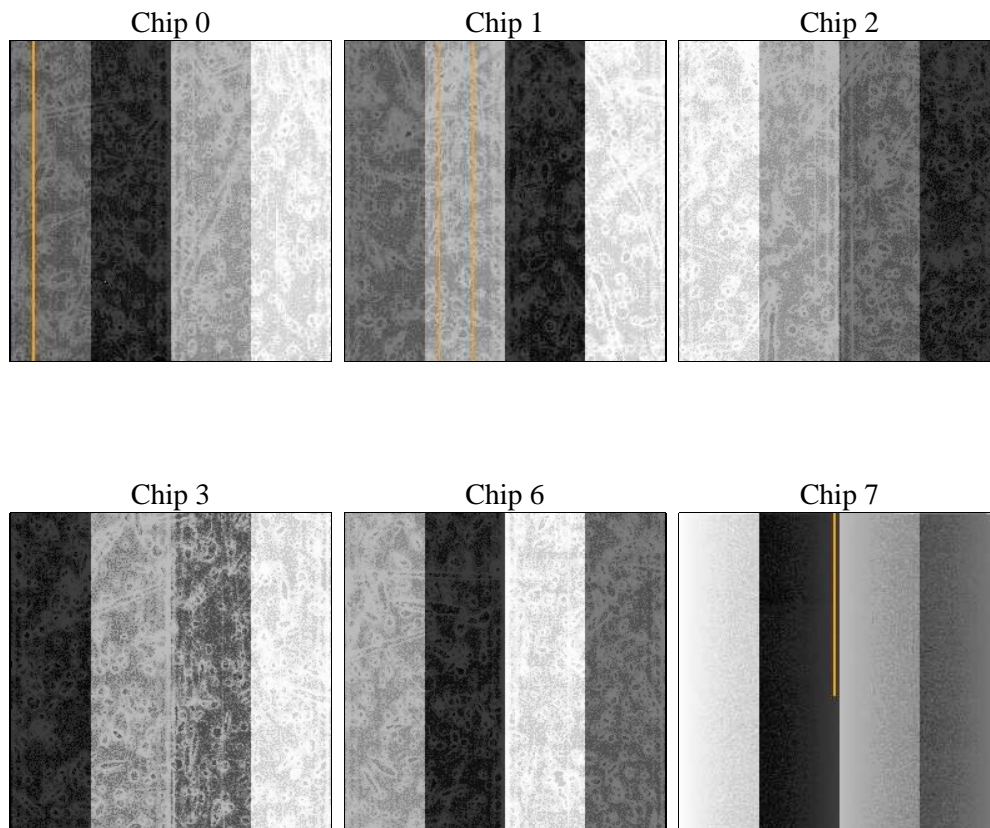
2 OBI

2.1 OBI

2.1.1 Images



2.1.2 Bias



2.1.3 Parameters

obi_num	0	Obi number	sched_exp_time	8000.000000	[s] Scheduled observation exposure time
ascdsver	8.4.5	Processing system revision	ontime	7664.0000071228	Sum of GTIs [s]
caldbver	4.5.1.1	 	ontime0	7664.0000071228	Sum of GTIs [s]
date	2012-08-28T04:36:33	Date and time of file creation	ontime1	7664.0000071228	Sum of GTIs [s]
revision	4	Processing version of data	ontime2	7664.0000071228	Sum of GTIs [s]
			ontime3	7664.0000071228	Sum of GTIs [s]
			ontime6	7664.0000071228	Sum of GTIs [s]
			ontime7	7664.0000071228	Sum of GTIs [s]
			l1events	335198	Number of level 1 events

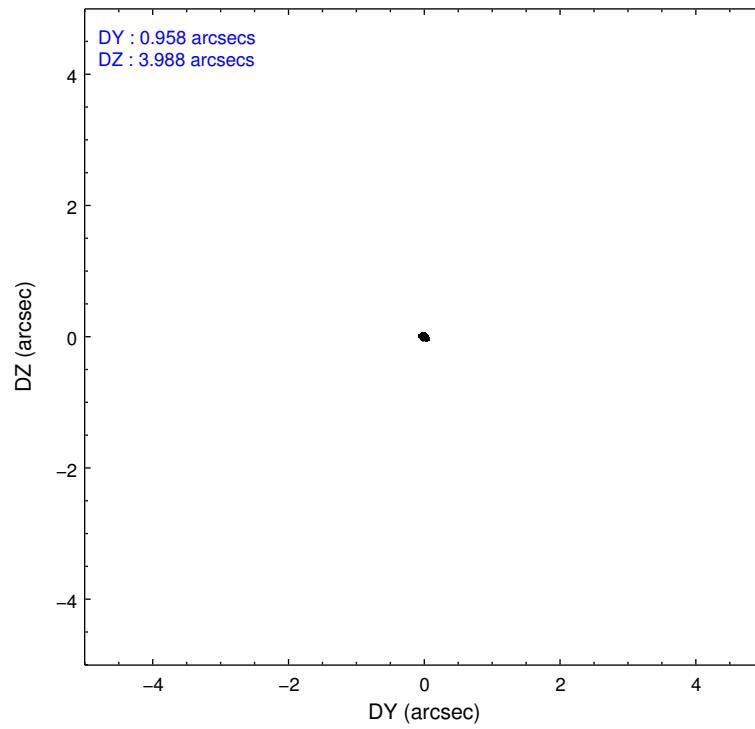
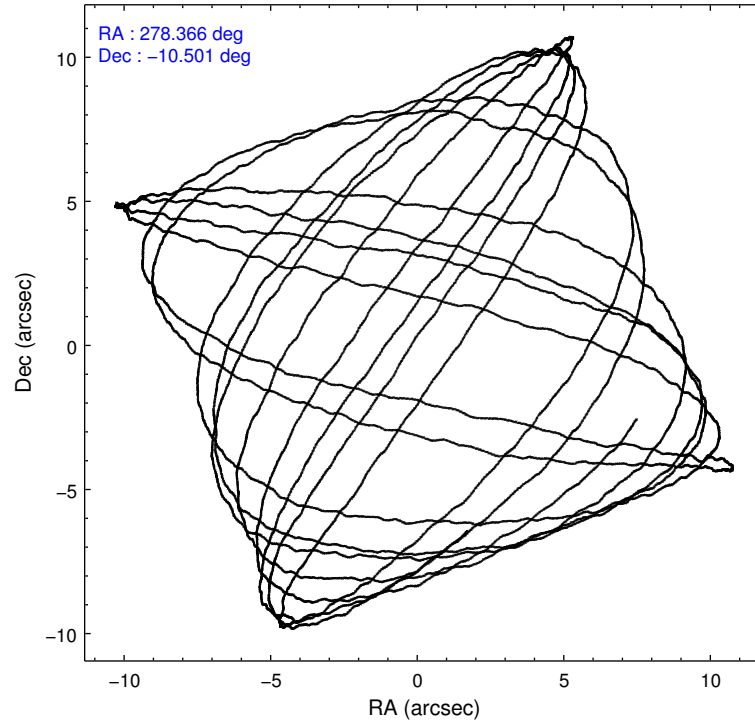
2.1.4 Events

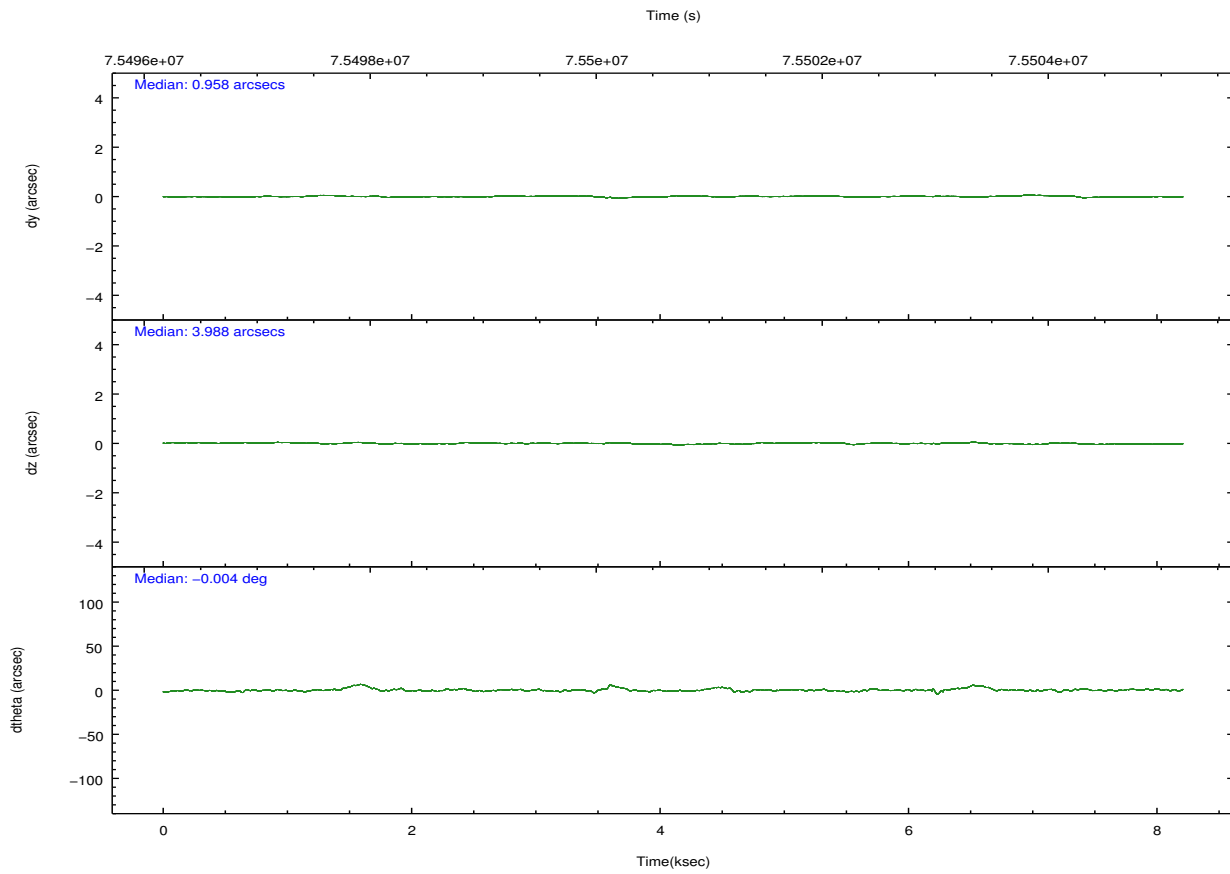
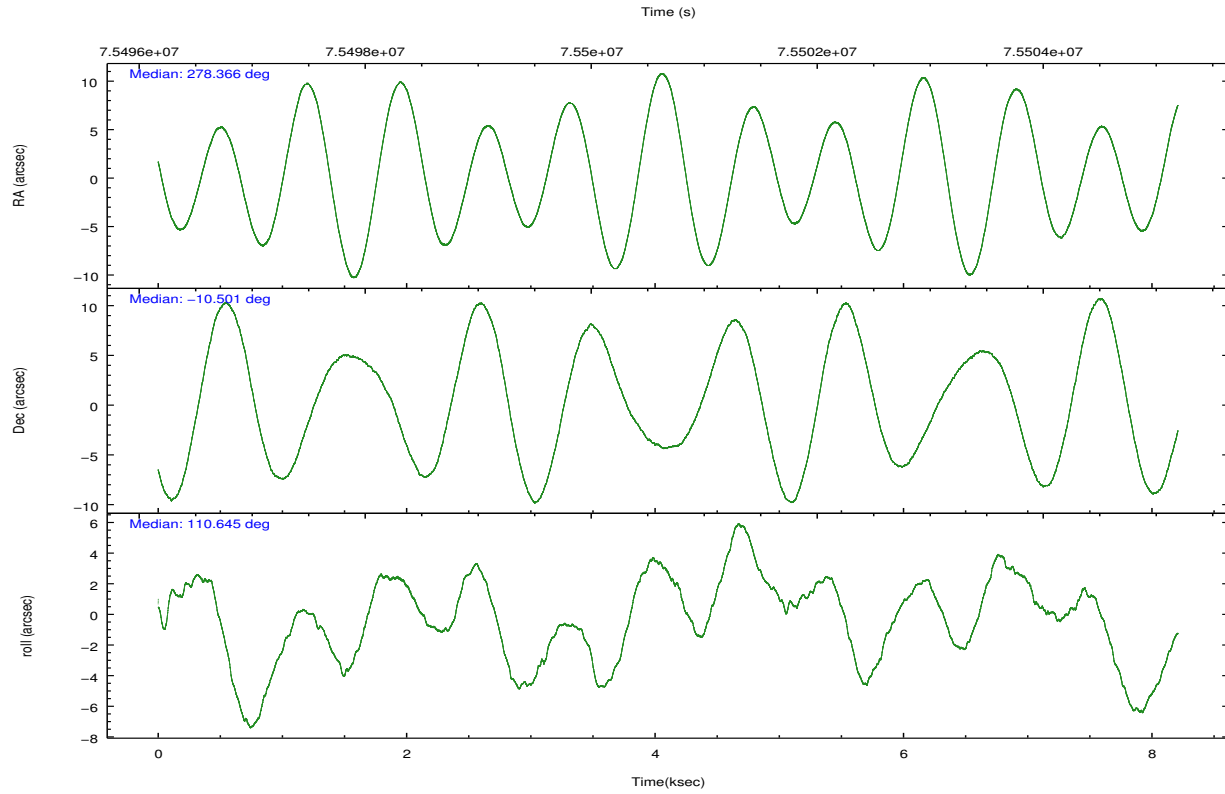
	ccd 0	ccd 1	ccd 2	ccd 3	ccd 6	ccd 7		ccd 0	ccd 1	ccd 2	ccd 3	ccd 6	ccd 7
level 1 events	46430	71852	49166	51909	54057	61784	grade 0 events	3790	20918	2942	3886	3857	2984
rejected events	38963	40818	42878	44360	46485	33222		8%	29%	5%	7%	7%	4%
rejected %	83%	56%	87%	85%	85%	53%	grade 1 events	31	182	19	26	46	40
								0%	0%	0%	0%	0%	0%
							grade 2 events	1430	4555	1305	1484	1432	5578
								3%	6%	2%	2%	2%	9%
							grade 3 events	640	1566	530	568	597	2644
								1%	2%	1%	1%	1%	4%
							grade 4 events	533	1613	507	576	564	2629
								1%	2%	1%	1%	1%	4%
							grade 5 events	1570	1789	1487	1680	1854	5463
								3%	2%	3%	3%	3%	8%
							grade 6 events	1076	2391	1007	1038	1124	14740
								2%	3%	2%	1%	2%	23%
							grade 7 events	37360	38838	41369	42651	44583	27706
								80%	54%	84%	82%	82%	44%

2.2 Compared Parameters

Parameter	Planned	Actual	Parameter	Planned	Actual
Instrument	ACIS	ACIS	Obspar format version number	7	7
Detector	ACIS-012367	ACIS-012367	Obspar file type	PREDICTED	ACTUAL
Grating	NONE	NONE	Obspar update status	NONE	UPDATED
Data mode	FAINT	FAINT	Number of optional ACIS chips dropped	0	0
Observation mode	POINTING	POINTING	On-chip summing requested	N	N
[deg] Pointing RA	278.387699	278.3660600782283	Subarray requested	NONE	NONE
[deg] Pointing Dec	-10.518698	-10.50114928267916	Alternating exposures requested	N	N
[deg] Pointing Roll	110.446421	110.6511687505727	[s] Primary exposure time	0.000000	3.2
[mm] SIM focus pos	-0.782348	-0.7809083437167272			
[mm] SIM defocus	0	0.001439871863259334			
[mm] SIM translation stage pos	-238.277263	-238.2741181829365			
[mm] SIM translation stage offset	4.6848	4.681665180006831			
[s] Observation start time (MET)	75496785.184000	75496389.8557			
Observation start date	2000-05-23T19:18:41	2000-05-23T19:13:09			
[s] Observation end time (MET)	75504785.184000	75504919.39351401			
Observation end date	2000-05-23T21:32:01	2000-05-23T21:35:19			
Read mode	TIMED	TIMED			

2.3 Aspect



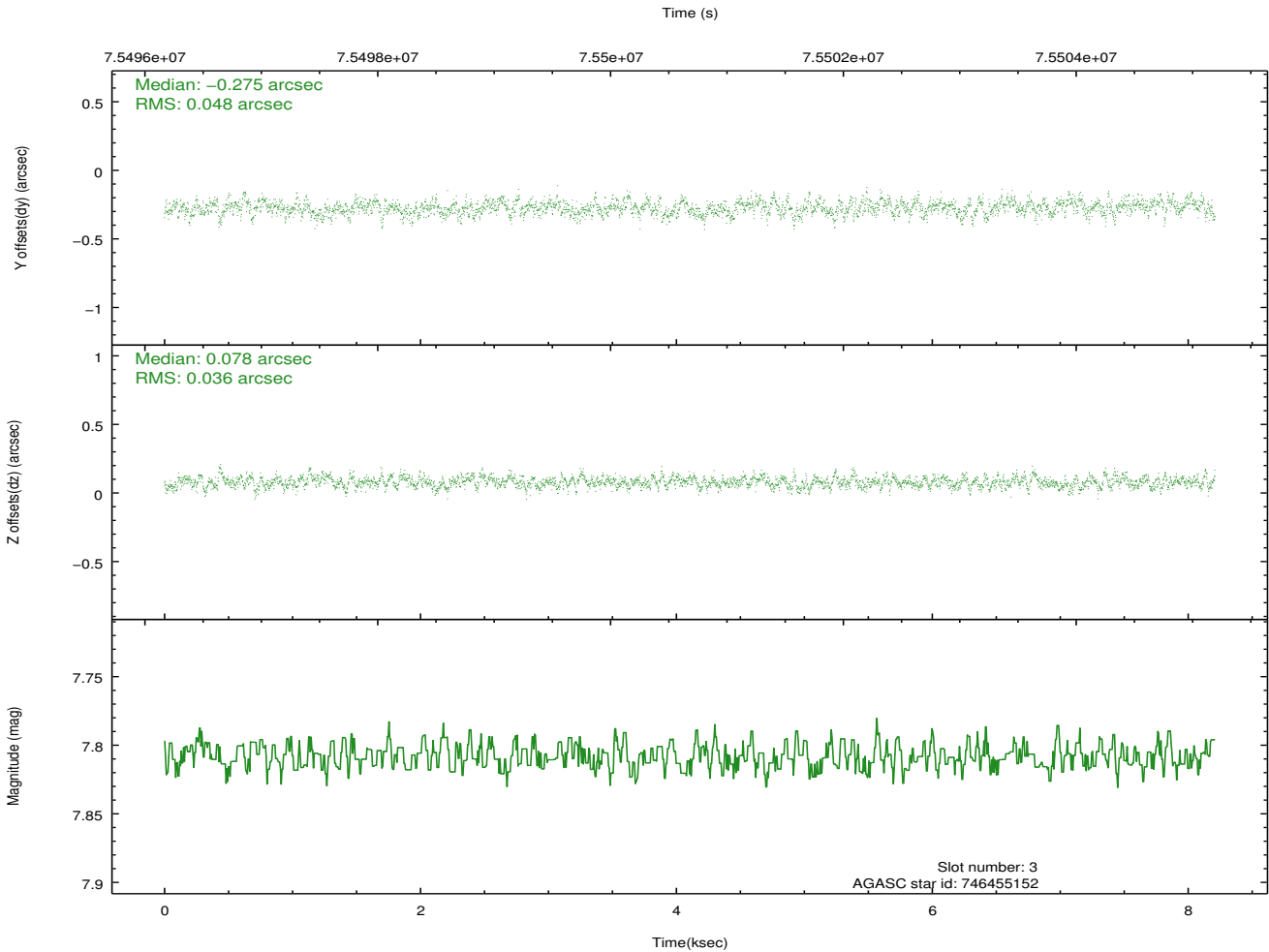
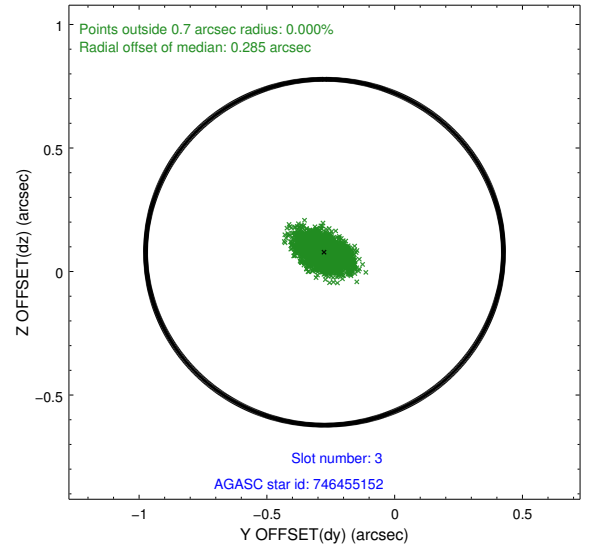
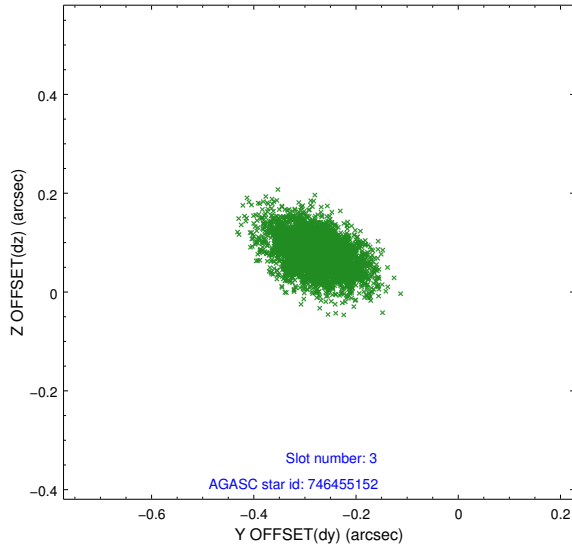


Slot Statistics

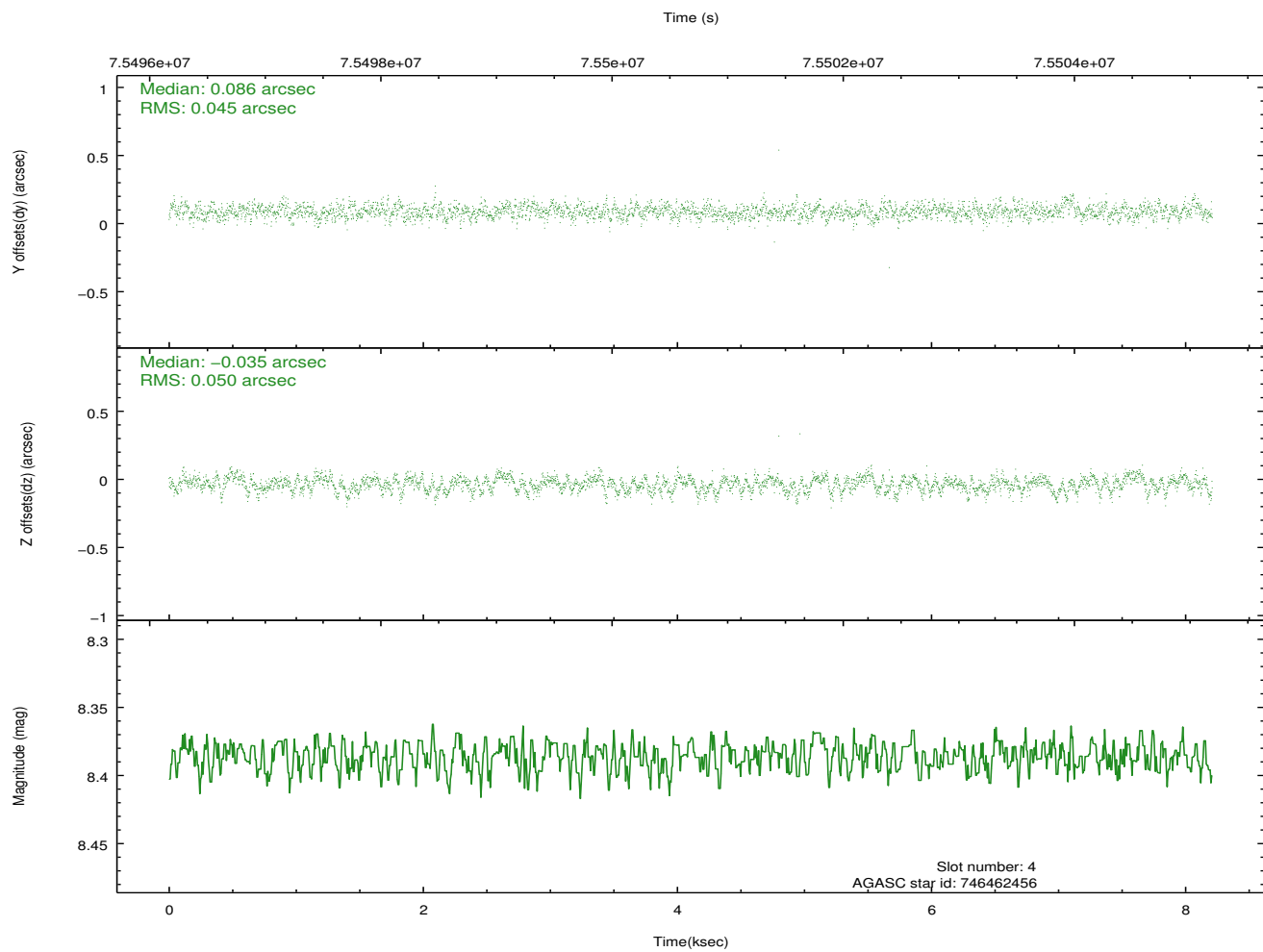
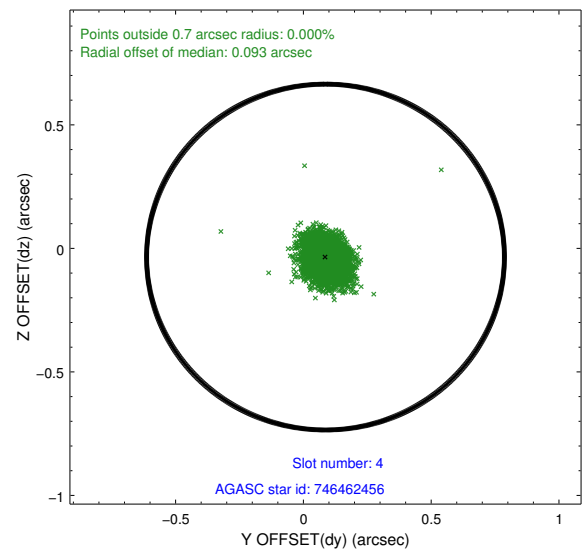
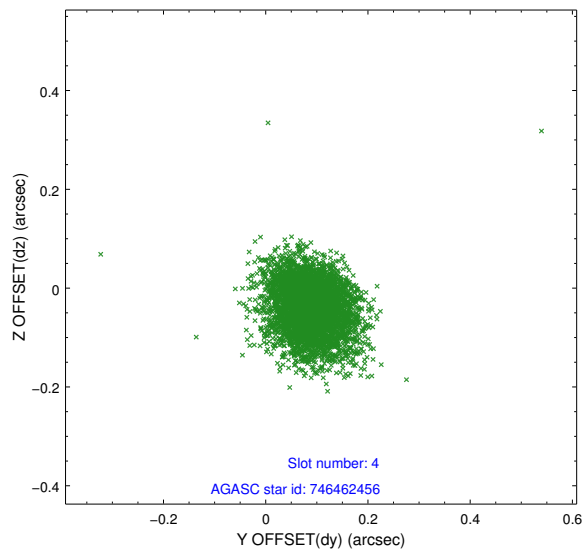
slot	status	id	mag	n_pts	med_dy	med_dz	dr1	dr2	ra	dec	mean_y	mean_z
0	FID	ACIS-I-2	7.16	2002	-0.063	-0.082	0.013	0.023	0.000000	0.000000	-754.98	-738.12
1	FID	ACIS-I-4	7.19	2003	-0.047	0.063	0.014	0.070	0.000000	0.000000	2158.75	1168.04
2	FID	ACIS-I-5	7.24	2003	0.007	0.088	0.013	0.055	0.000000	0.000000	-1808.18	1167.14
3	GUIDE	746455152	7.81	4006	-0.275	0.078	0.062	0.106	278.447893	-9.976732	1753.77	-881.90
4	GUIDE	746462456	8.39	4003	0.086	-0.035	0.071	0.116	278.652171	-10.530173	-365.16	-863.43
5	GUIDE	746455112	8.93	4006	0.092	0.086	0.077	0.131	278.266531	-10.703234	-472.55	632.89
6	GUIDE	746460328	9.80	4002	-0.076	0.073	0.116	0.189	278.603974	-9.898096	1825.56	-1499.27
7	GUIDE	746995400	9.62	4004	0.169	-0.200	0.114	0.185	278.078957	-11.289885	-2220.44	1989.98

2.4 Star Slots

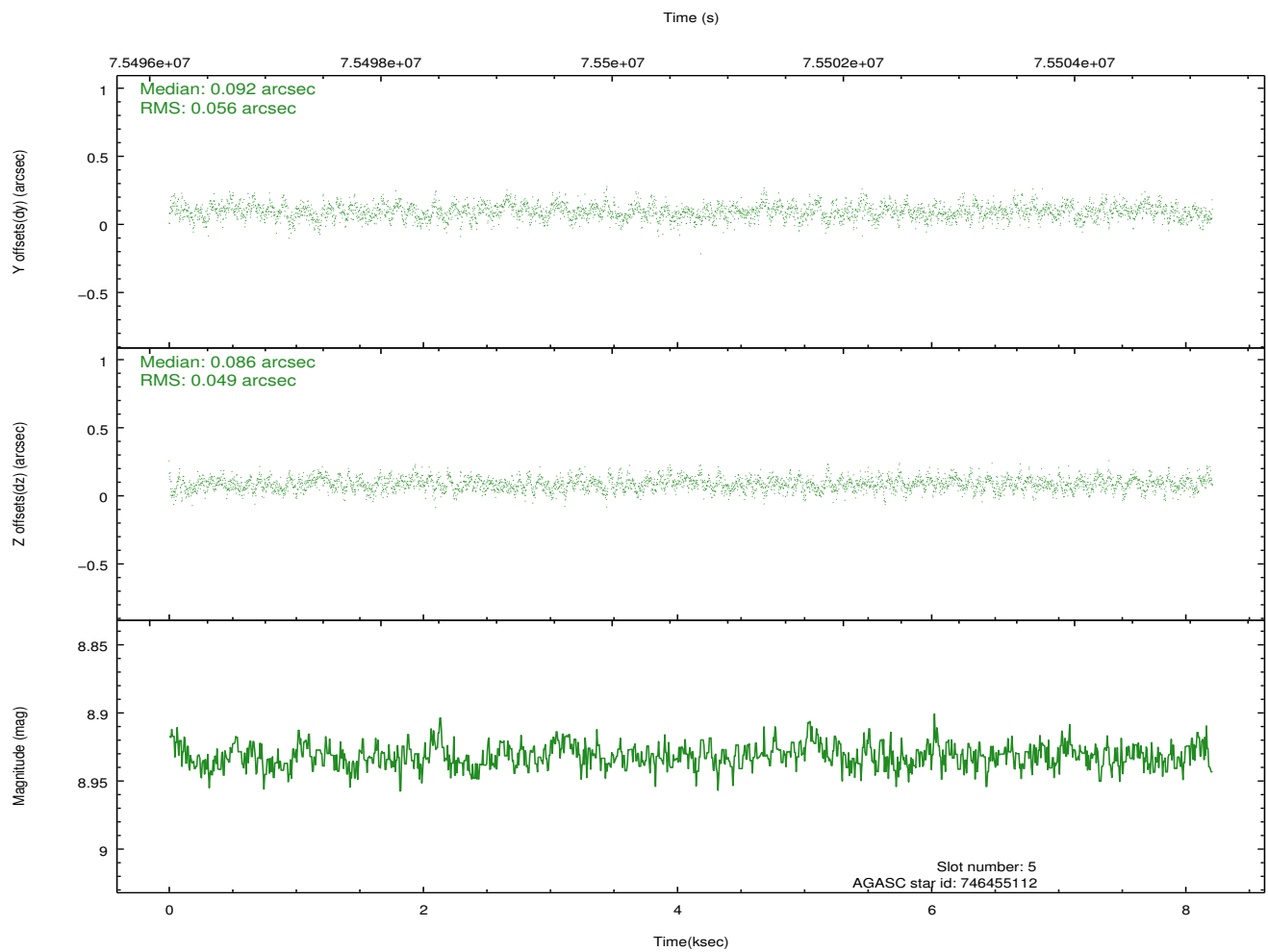
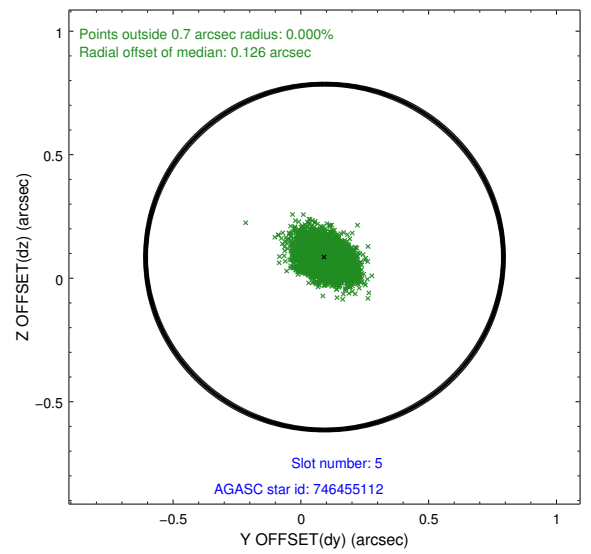
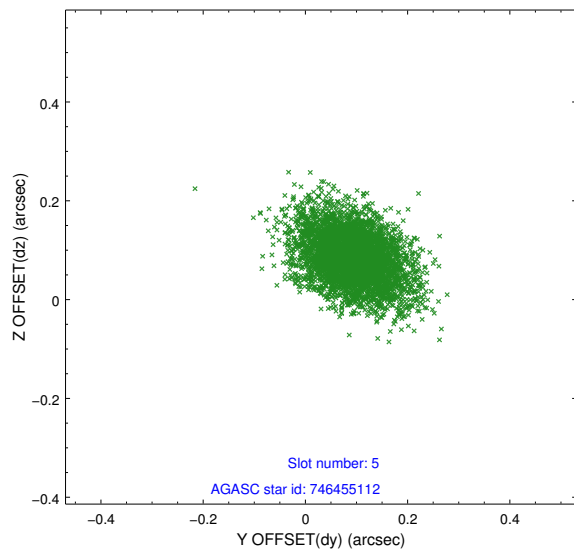
2.4.1 Slot 3



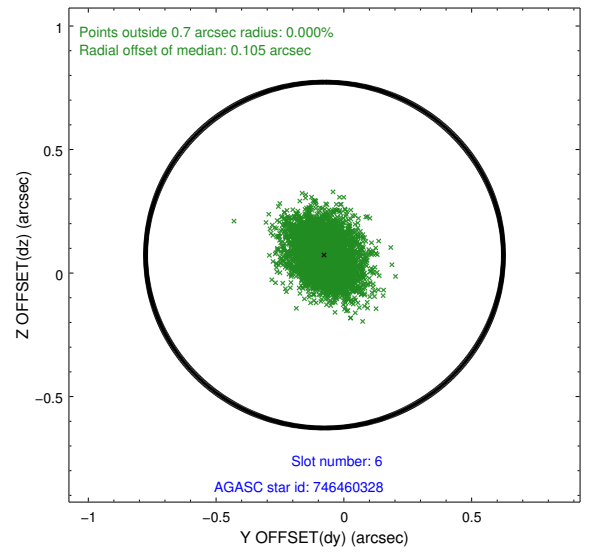
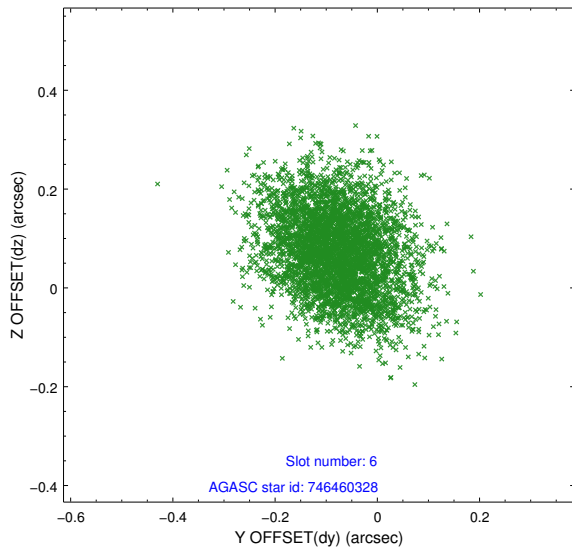
2.4.2 Slot 4



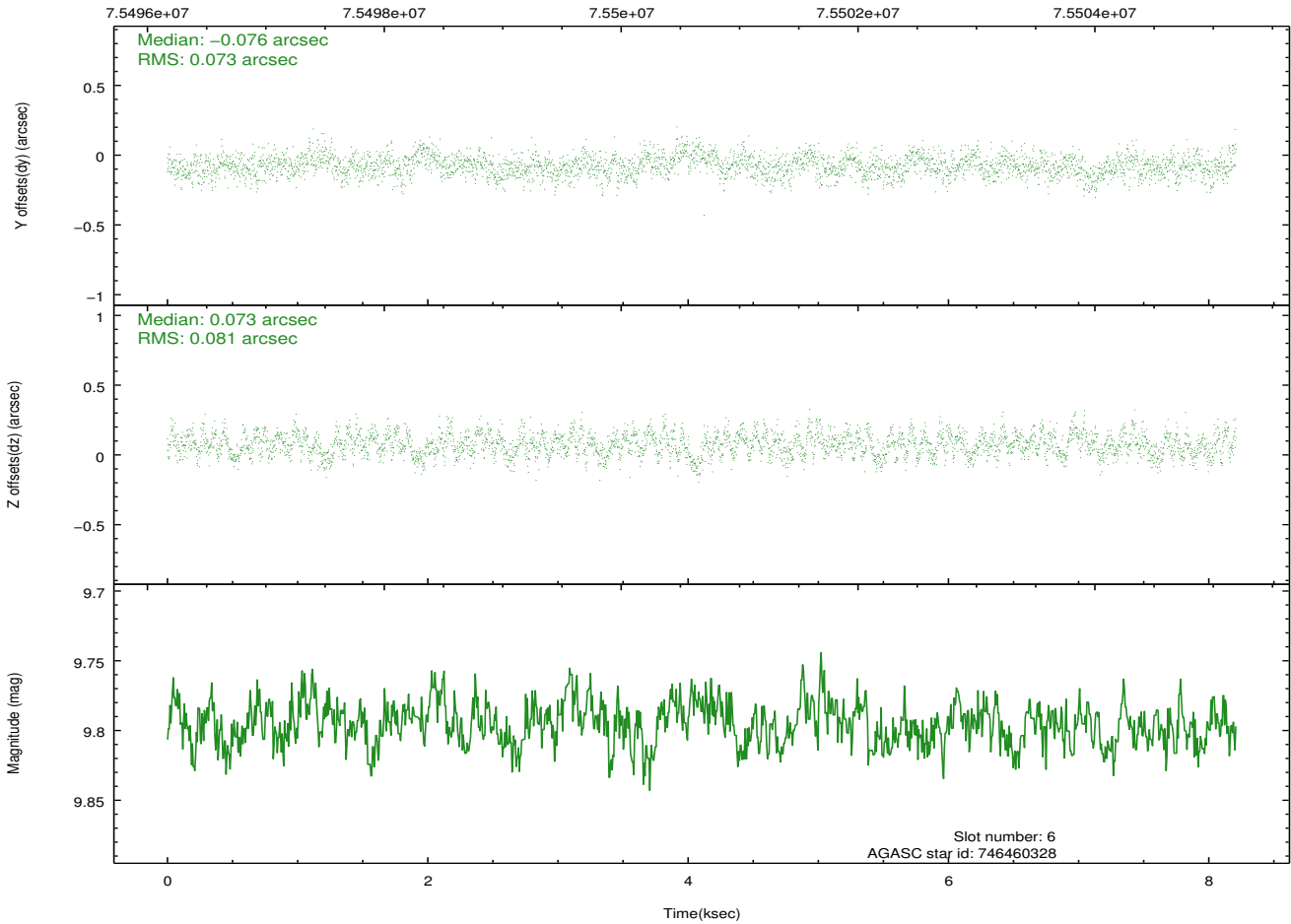
2.4.3 Slot 5



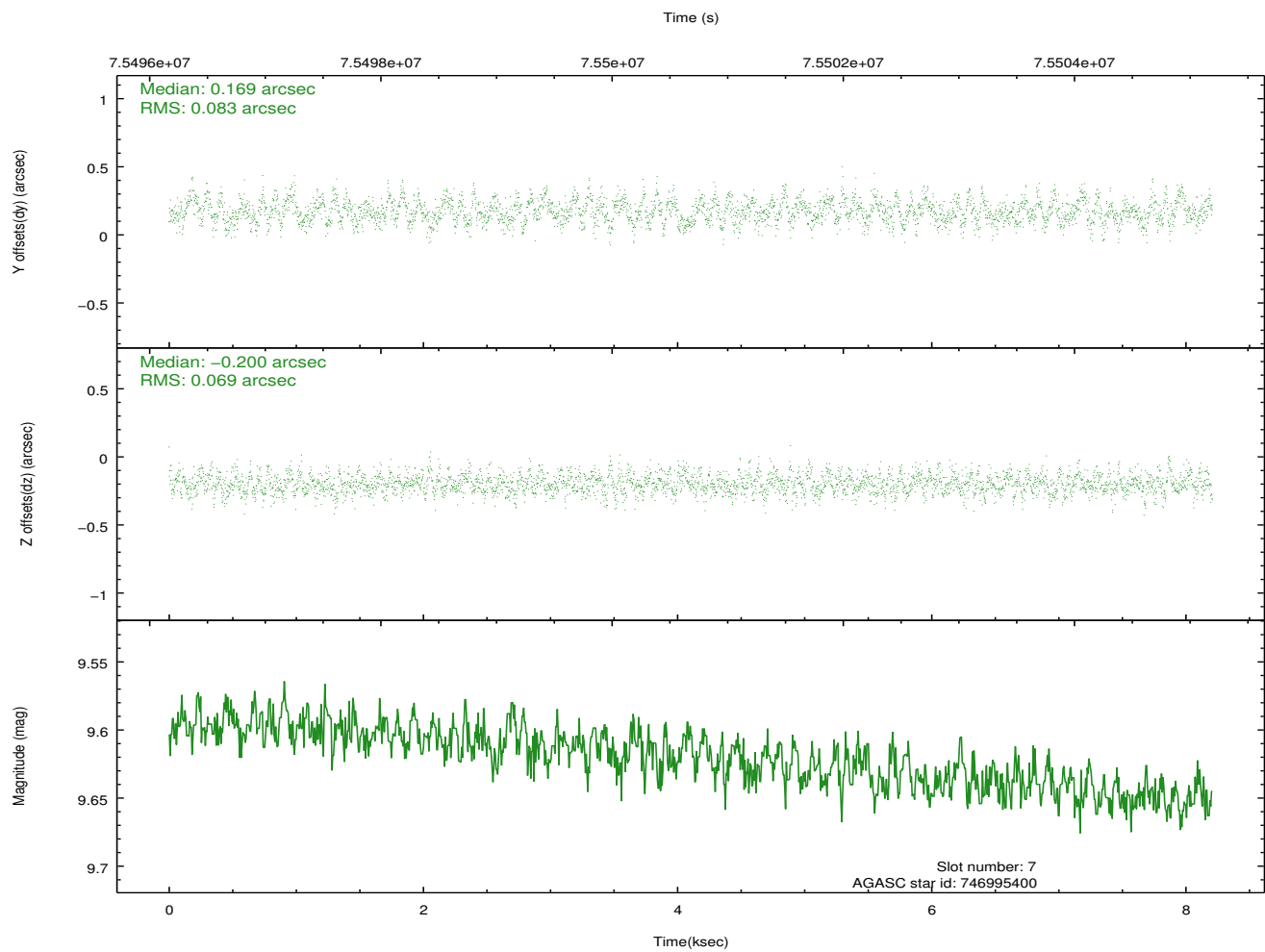
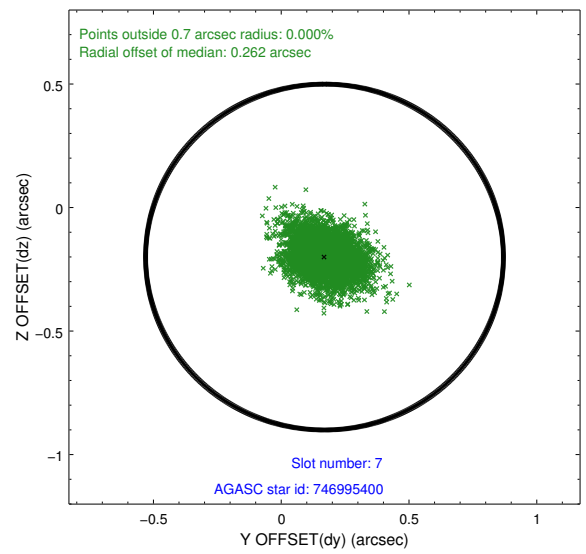
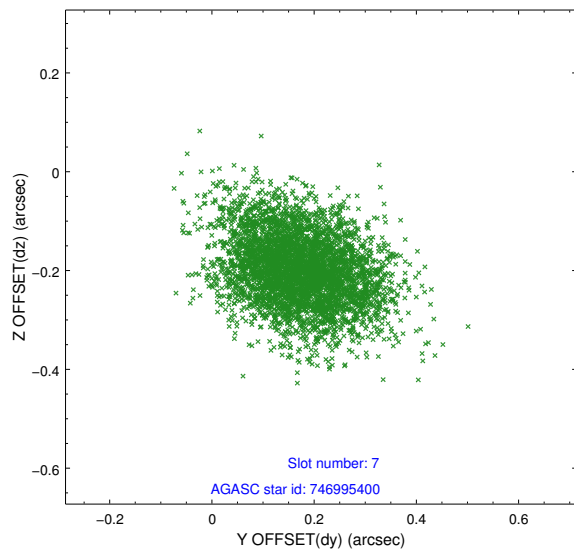
2.4.4 Slot 6



Time (s)

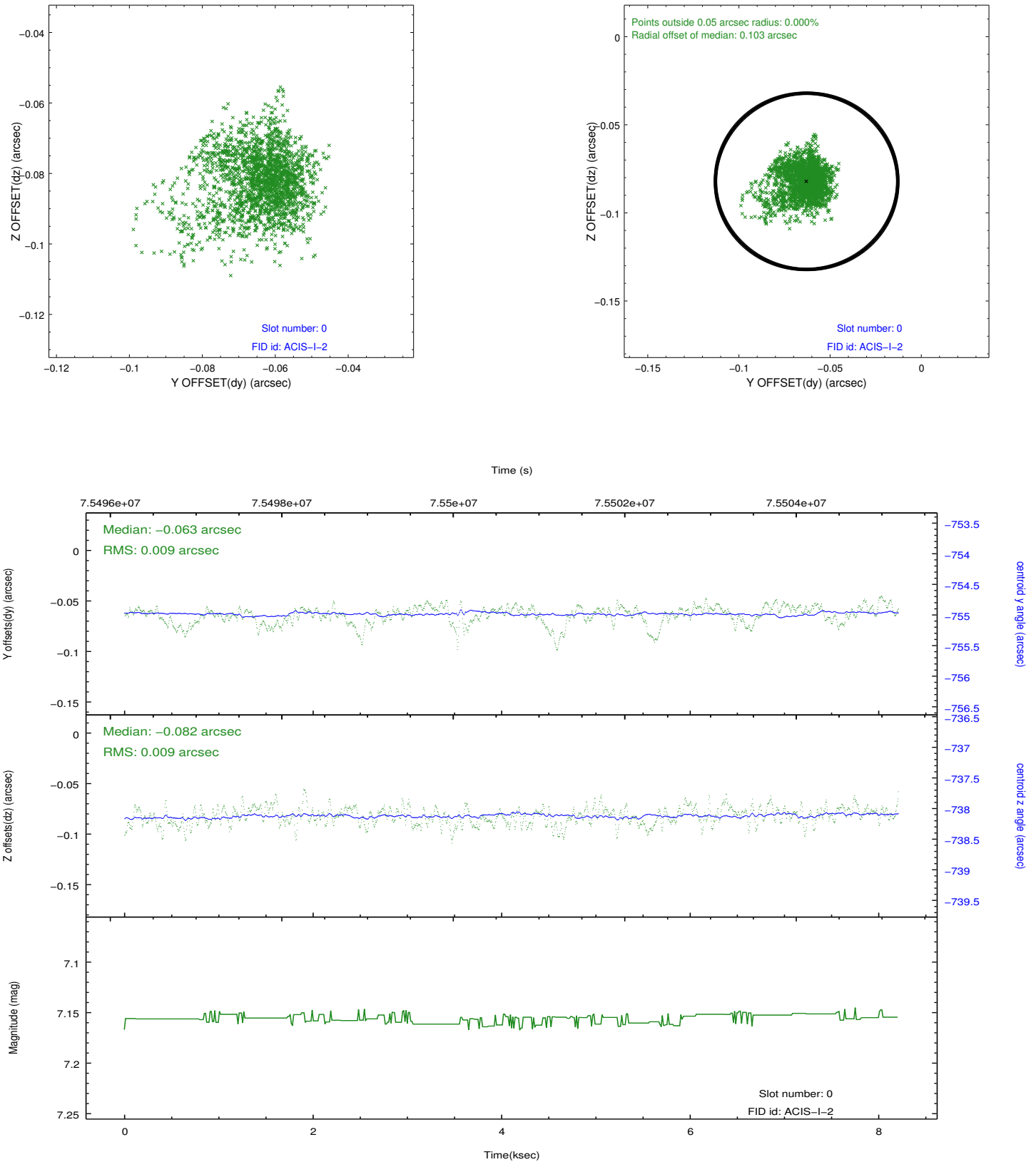


2.4.5 Slot 7

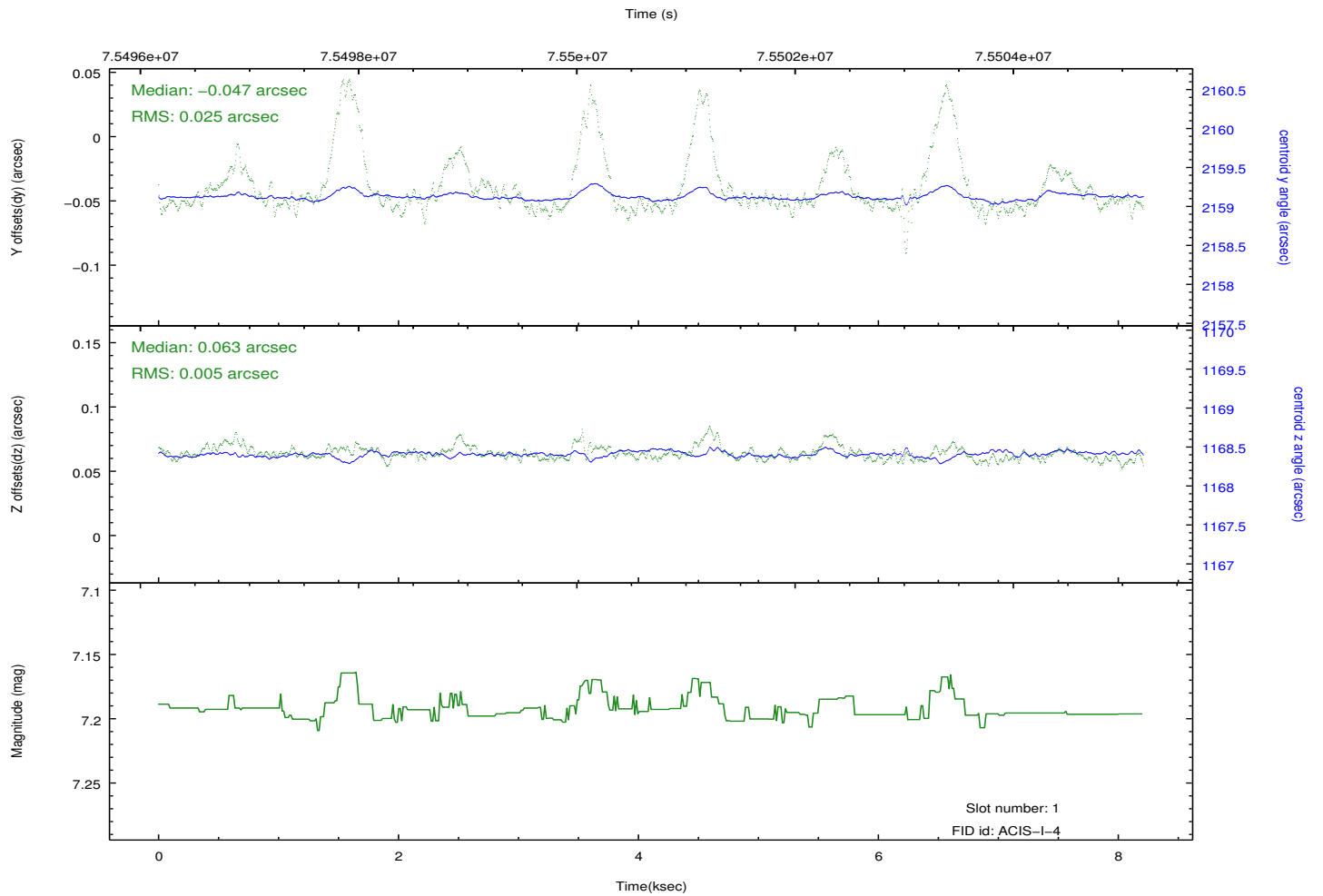
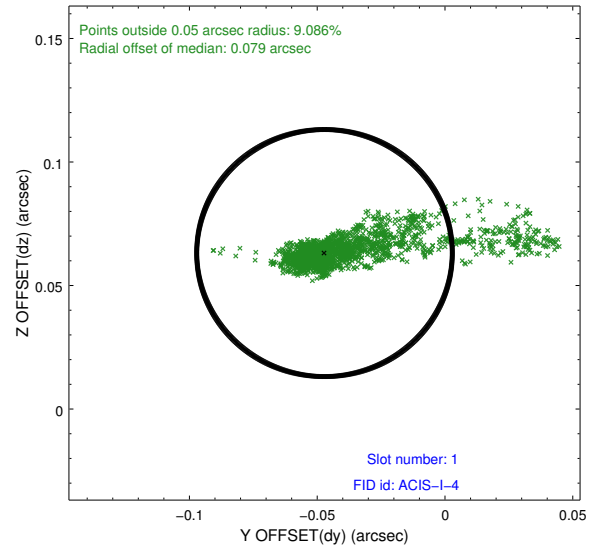
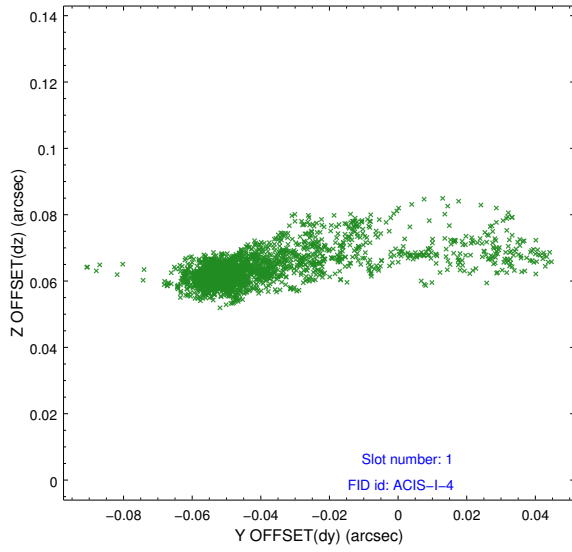


2.5 FID Slots

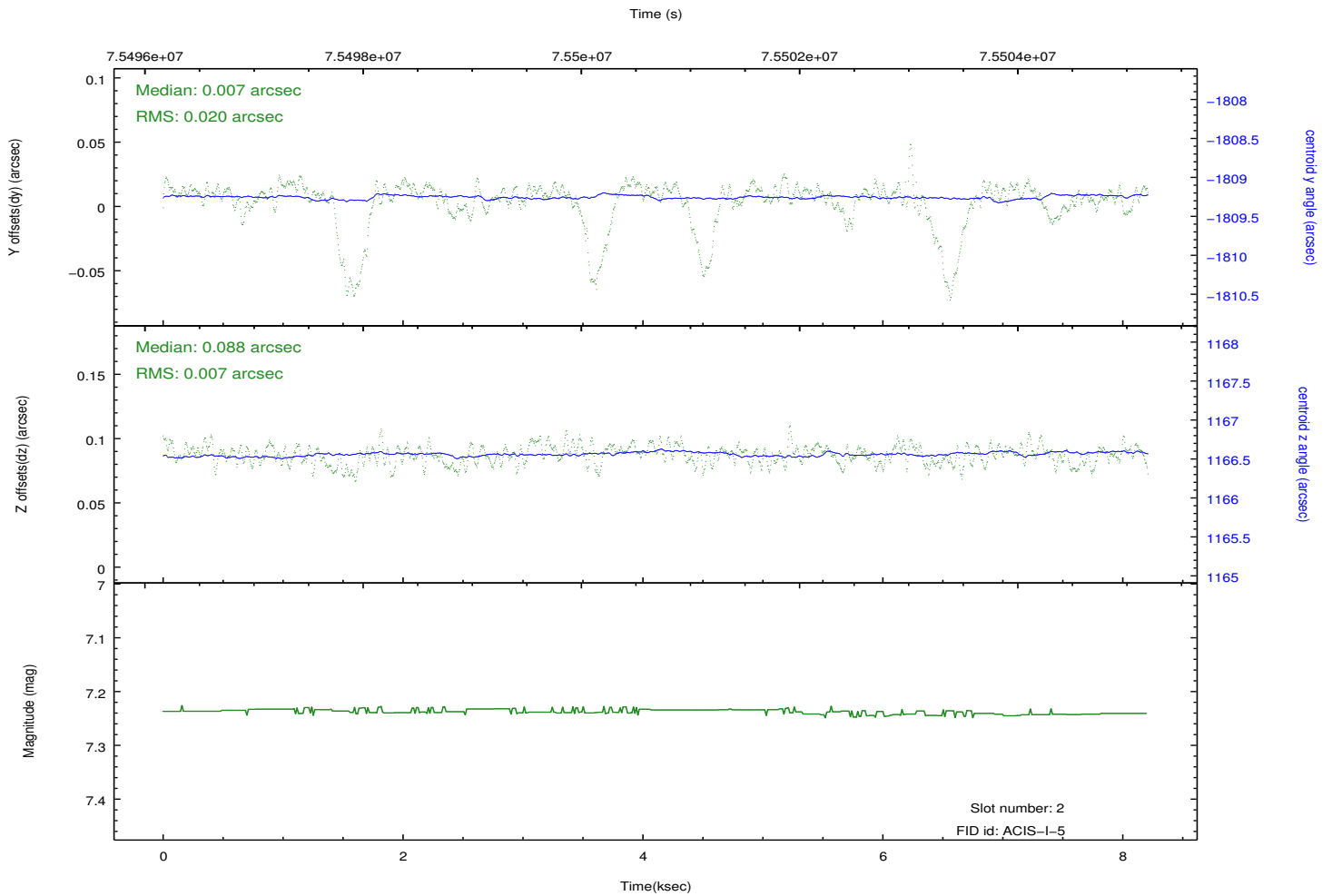
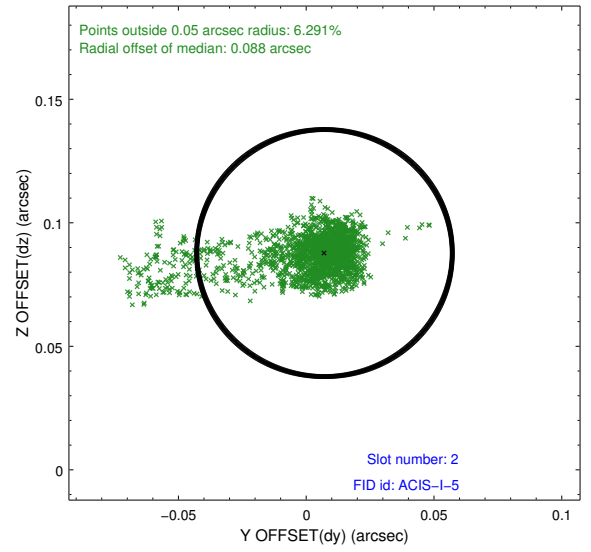
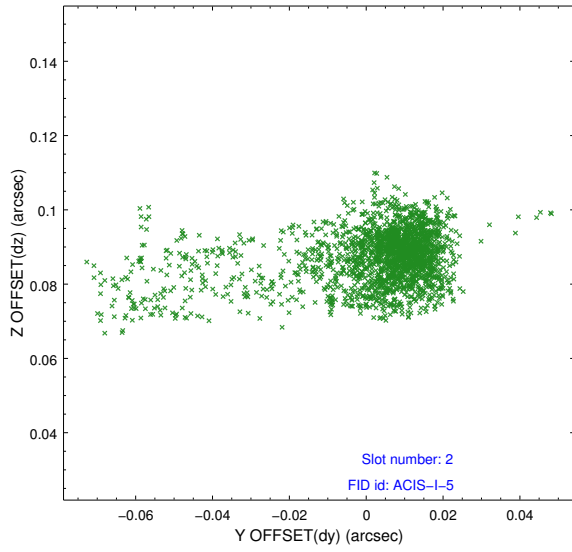
2.5.1 Slot 0



2.5.2 Slot 1



2.5.3 Slot 2



A Summary

A.1 Status

V&V Scientist	Jen Lauer
V&V Date (YYYY-MM-DD)	2012.08.31
V&V Edition	1
V&V Disposition and Status	OK
V&V Charge Time	7.67

A.2 Comments