

V&V Reference Report

L2 ASCDS Version : 10.3.3

Observation 17641 - L2 Version 1
Chandra X-Ray Center

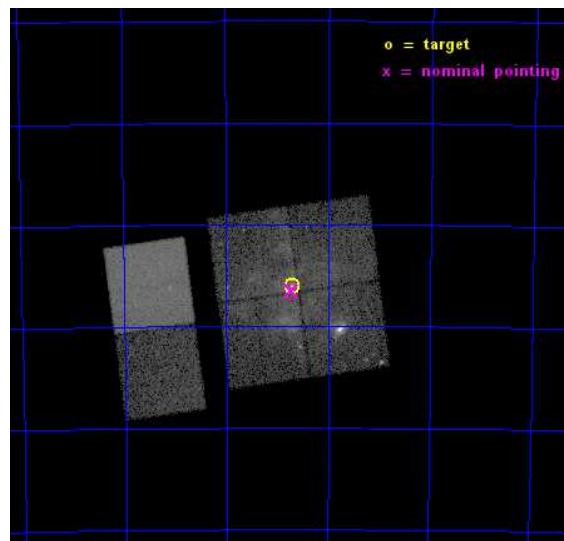
L2 Processing Date : Apr 5 2015

Contents

1	Front	2
2	OBI	3
2.1	OBI	3
2.1.1	Images	3
2.1.2	Bias	3
2.1.3	Parameters	4
2.1.4	Events	4
2.2	Compared Parameters	5
2.3	Aspect	6
2.4	Star Slots	9
2.4.1	Slot 3	9
2.4.2	Slot 4	10
2.4.3	Slot 5	11
2.4.4	Slot 6	12
2.4.5	Slot 7	13
2.5	FID Slots	14
2.5.1	Slot 0	14
2.5.2	Slot 1	15
2.5.3	Slot 2	16
A	Summary	17
A.1	Status	17
A.2	Comments	17

1 Front

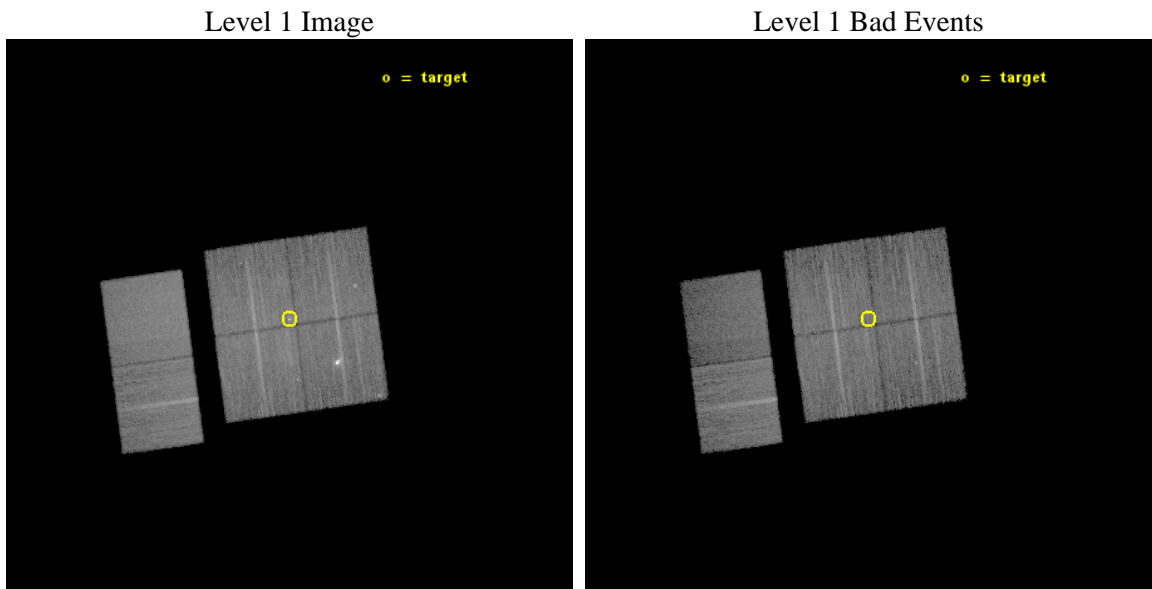
seq_num	901116	Sequence number
obs_id	17641	Observation id
title	The Tarantula -- Revealed by X-rays (T-ReX): A Definitive Chandra Investigation of 30 Doradus	Proposal title
observer	Dr. Leisa Townsley	Principal investigator
object	30 Doradus	Source name
dtcycle	0	
cycle	P	events from which exps? Prim/Second/Both
ra_targ	84.676667	Observer's specified target RA [deg]
dec_targ	-69.100806	Observer's specified target Dec [deg]
ra_nom	84.68051711439	Nominal RA [deg]
dec_nom	-69.108884500965	Nominal Dec [deg]
roll_nom	262.21230793508	Nominal Roll [deg]
revision	1	Processing version of data
ontime	24953.51841116	Sum of GTIs [s]
livetime	24637.541935833	Livetime [s]
ontime0	24960.000371933	Sum of GTIs [s]
ontime1	24956.759371638	Sum of GTIs [s]
ontime2	24960.000371933	Sum of GTIs [s]
ontime3	24953.51841116	Sum of GTIs [s]
ontime6	24960.000371933	Sum of GTIs [s]
ontime7	24960.000371933	Sum of GTIs [s]
l2events	155300	Number of level 2 events



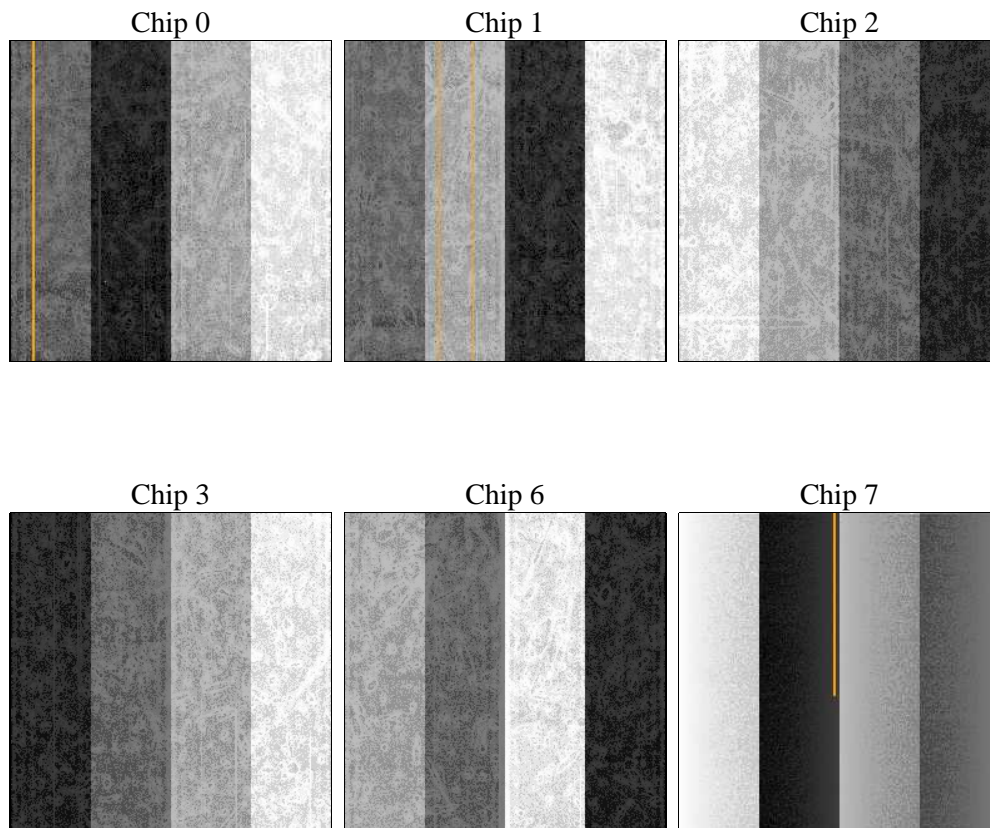
2 OBI

2.1 OBI

2.1.1 Images



2.1.2 Bias



2.1.3 Parameters

obi_num	1	Obi number	sched_exp_time	25000.000000	[s] Scheduled observation exposure time
ascdsver	10.3.3	Processing system revision	ontime	24953.51841116	Sum of GTIs [s]
caldbver	4.6.7	 	ontime0	24960.000371933	Sum of GTIs [s]
date	2015-04-05T17:38:43	Date and time of file creation	ontime1	24956.759371638	Sum of GTIs [s]
revision	1	Processing version of data	ontime2	24960.000371933	Sum of GTIs [s]
			ontime3	24953.51841116	Sum of GTIs [s]
			ontime6	24960.000371933	Sum of GTIs [s]
			ontime7	24960.000371933	Sum of GTIs [s]
			l1events	696749	Number of level 1 events

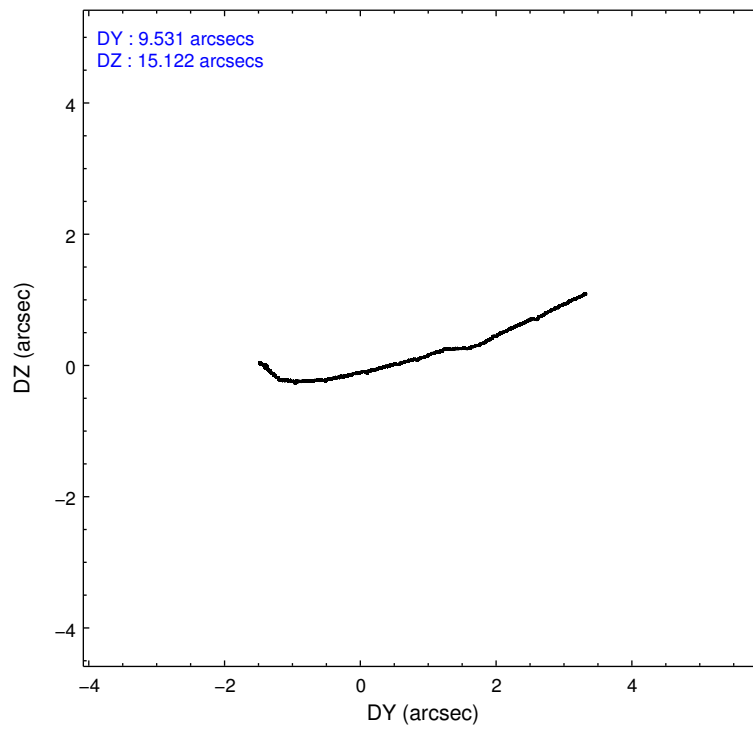
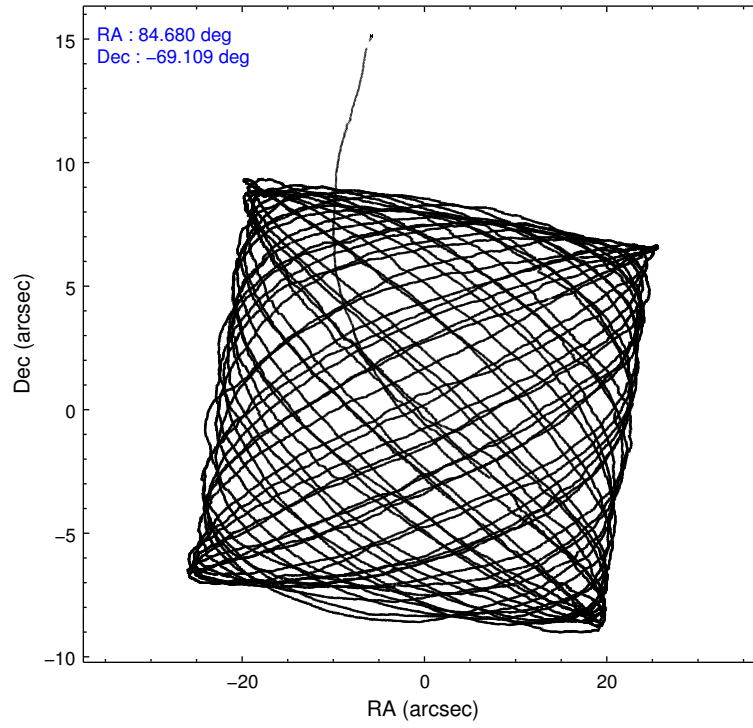
2.1.4 Events

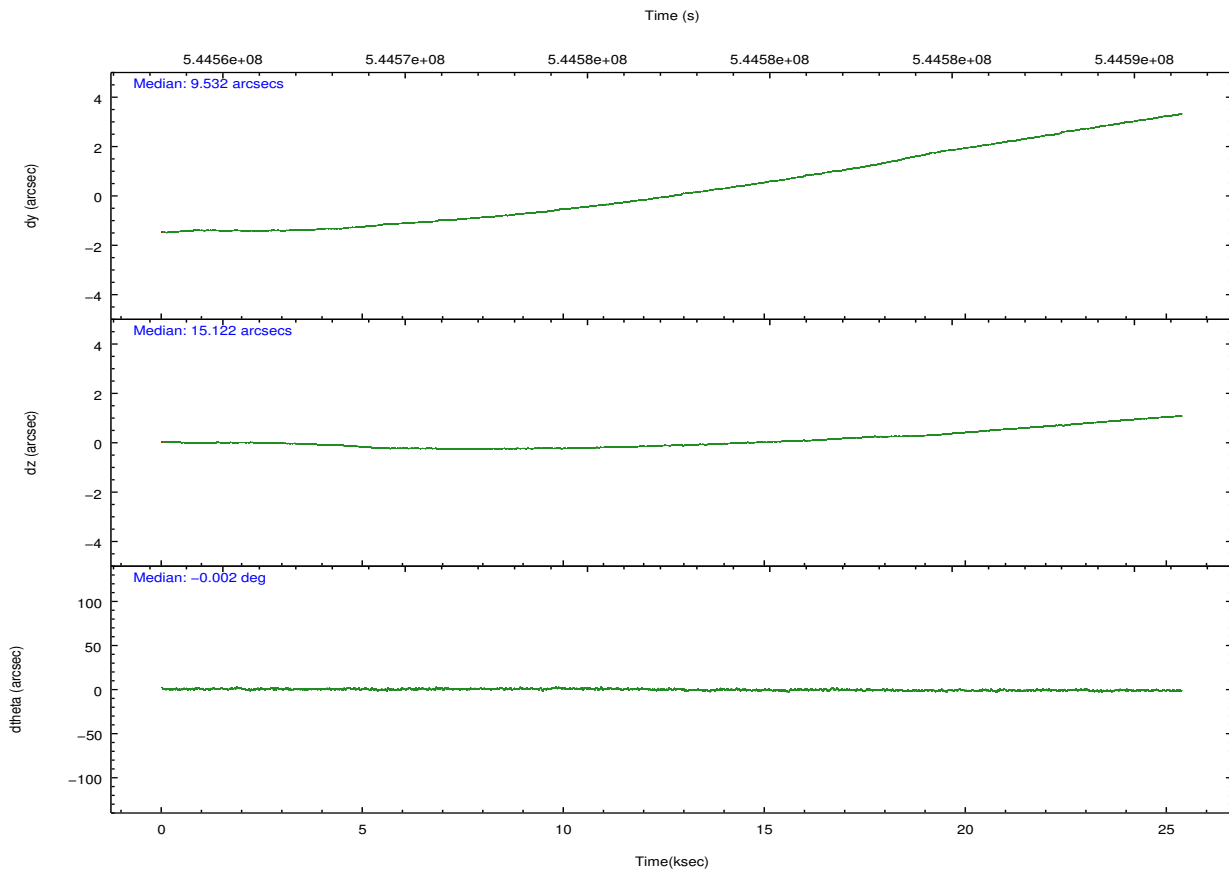
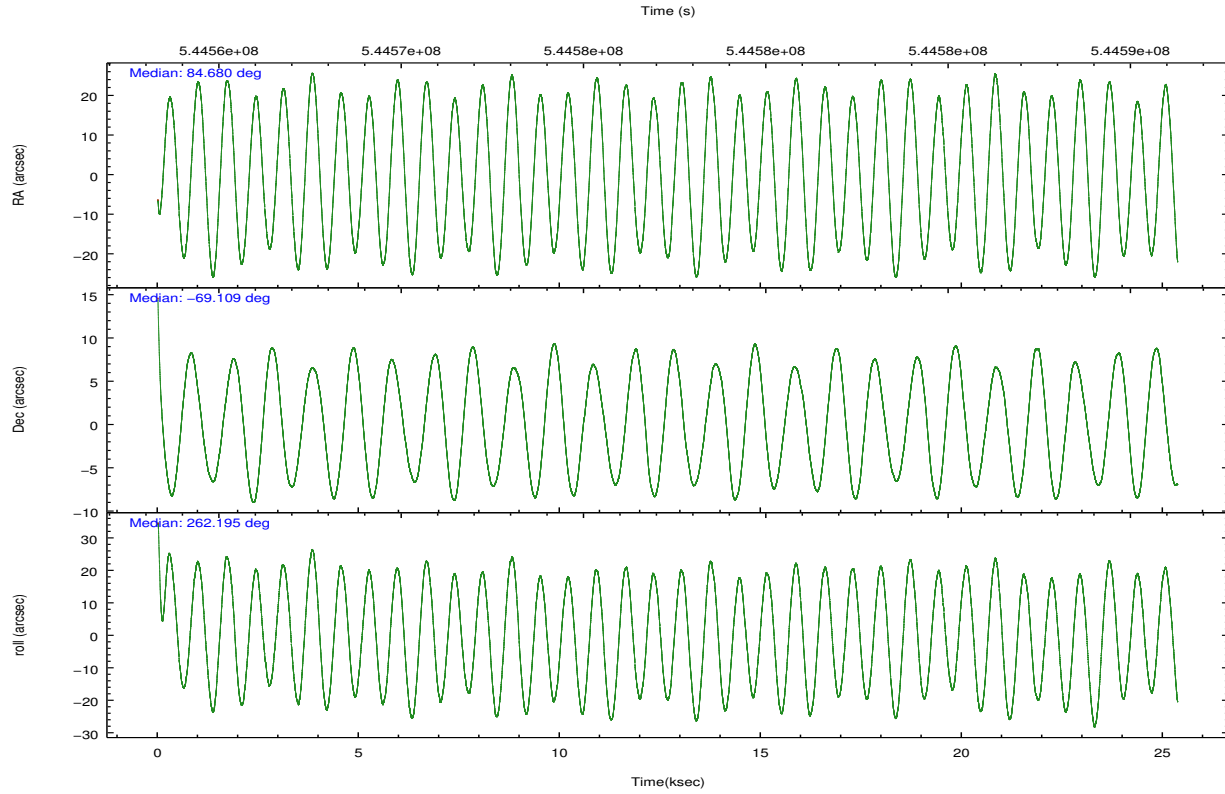
	ccd 0	ccd 1	ccd 2	ccd 3	ccd 6	ccd 7		ccd 0	ccd 1	ccd 2	ccd 3	ccd 6	ccd 7
level 1 events	116712	101822	118365	115918	112784	131148	grade 0 events	20649	9377	10932	12231	5938	7067
rejected events	84480	83230	98731	94818	98084	66929		17%	9%	9%	10%	5%	5%
rejected %	72%	81%	83%	81%	86%	51%	grade 1 events	155	70	75	107	62	206
								0%	0%	0%	0%	0%	0%
							grade 2 events	5212	3537	3657	3369	3264	14100
								4%	3%	3%	2%	2%	10%
							grade 3 events	1860	1502	1434	1478	1302	5786
								1%	1%	1%	1%	1%	4%
							grade 4 events	1719	1371	1332	1425	1317	5681
								1%	1%	1%	1%	1%	4%
							grade 5 events	4223	4569	4007	5006	4995	13336
								3%	4%	3%	4%	4%	10%
							grade 6 events	2796	2807	2279	2600	2881	31591
								2%	2%	1%	2%	2%	24%
							grade 7 events	80098	78589	94649	89702	93025	53381
								68%	77%	79%	77%	82%	40%

2.2 Compared Parameters

Parameter	Planned	Actual	Parameter	Planned	Actual
Instrument	ACIS	ACIS	Obspar format version number	7	7
Detector	ACIS-012367	ACIS-012367	Obspar file type	PREDICTED	ACTUAL
Grating	NONE	NONE	Obspar update status	NONE	UPDATED
Data mode	VFAINT	VFAINT	CCD I0 on	Y	Y
Observation mode	POINTING	POINTING	CCD I1 on	Y	Y
[deg] Pointing RA	84.651004	84.68051711439017	CCD I2 on	Y	Y
[deg] Pointing Dec	-69.083353	-69.10888450096503	CCD I3 on	Y	Y
[deg] Pointing Roll	261.976029	262.2123079350838	CCD S0 on	N	N
[mm] SIM focus pos	-0.782348	-0.7809083437167272	CCD S1 on	N	N
[mm] SIM defocus	0	0.001439871863259334	CCD S2 on	O1	Y
[mm] SIM translation stage pos	-233.592463	-233.5874344608287	CCD S3 on	O2	Y
[mm] SIM translation stage offset	0	-0.005018542100998502	CCD S4 on	N	N
[s] Observation start time (MET)	544564989.184000	544563940.89259	CCD S5 on	N	N
Observation start date	2015-04-04T20:02:02	2015-04-04T19:45:40	Number of optional ACIS chips dropped	0	0
[s] Observation end time (MET)	544589989.184000	544590545.28158	On-chip summing requested	N	N
Observation end date	2015-04-05T02:58:42	2015-04-05T03:09:05	Subarray requested	NONE	NONE
Read mode	TIMED	TIMED	Alternating exposures requested	N	N
			[s] Primary exposure time	0.000000	3.2

2.3 Aspect





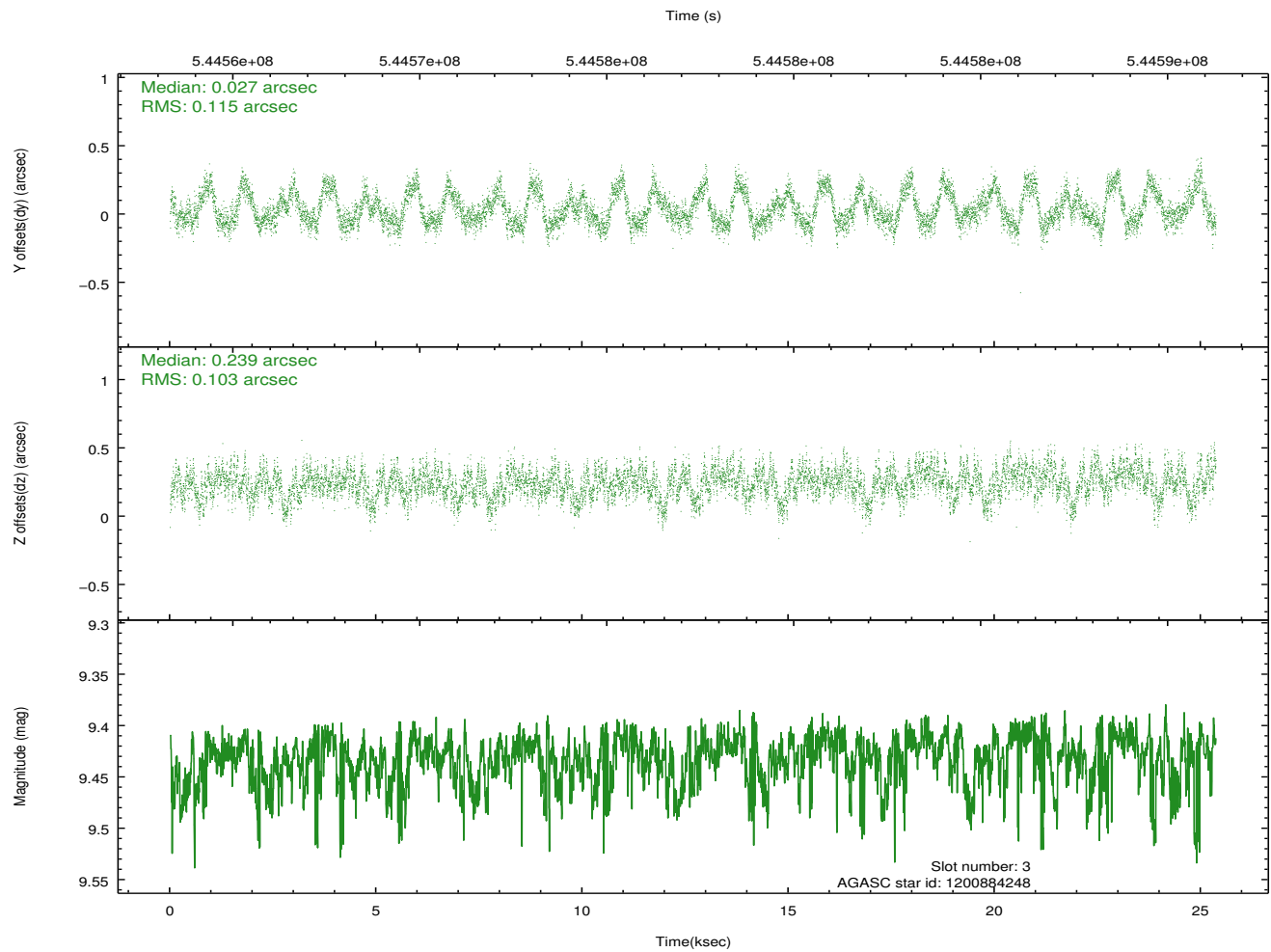
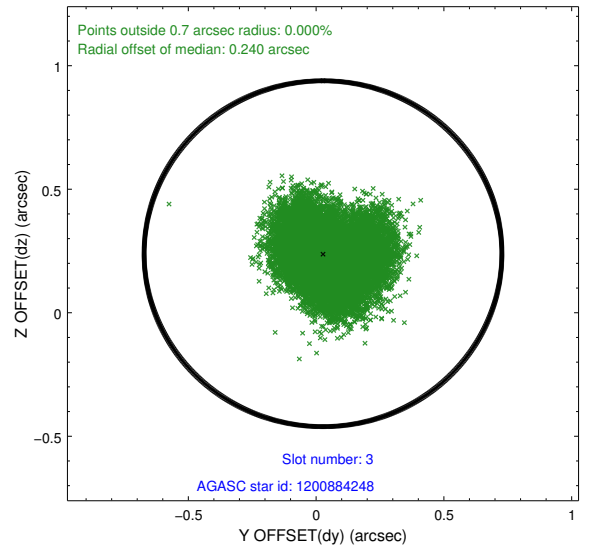
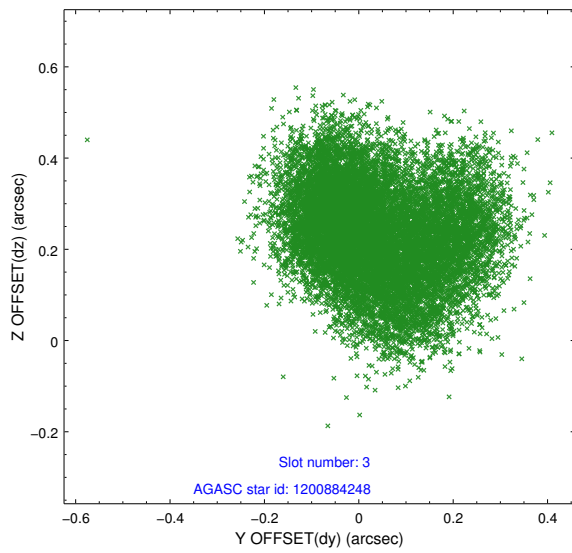
Slot Statistics

slot	status	used	id	mag	n_pts	med_dy	med_dz	dr1	dr2	ra	dec	mean_y	mean_z
0	FID		ACIS-I-1	7.08	6187	-0.052	-0.015	0.017	0.060	0.000000	0.000000	929.67	-838.88
1	FID		ACIS-I-4	7.01	6187	0.062	0.034	0.030	0.070	0.000000	0.000000	2149.90	1060.93
2	FID		ACIS-I-6	7.06	6187	-0.105	0.045	0.018	0.033	0.000000	0.000000	395.69	1703.25
3	GUIDE	used	1200884248	9.43	12358	0.027	0.239	0.169	0.258	83.880915	-68.565170	-1699.27	-1262.27
4	GUIDE	used	1200885760	9.46	12367	0.059	0.237	0.116	0.184	83.723637	-68.777667	-911.28	-1348.60
5	GUIDE	used	1201018312	9.60	12361	-0.199	-0.369	0.129	0.218	86.298231	-69.115627	-152.58	2113.01
6	GUIDE	used	1201018384	9.03	12361	0.089	-0.026	0.102	0.176	85.801362	-68.593260	-1944.37	1252.95
7	GUIDE	used	1201020040	8.57	12372	0.011	-0.075	0.086	0.137	85.379163	-68.879396	-853.54	833.72

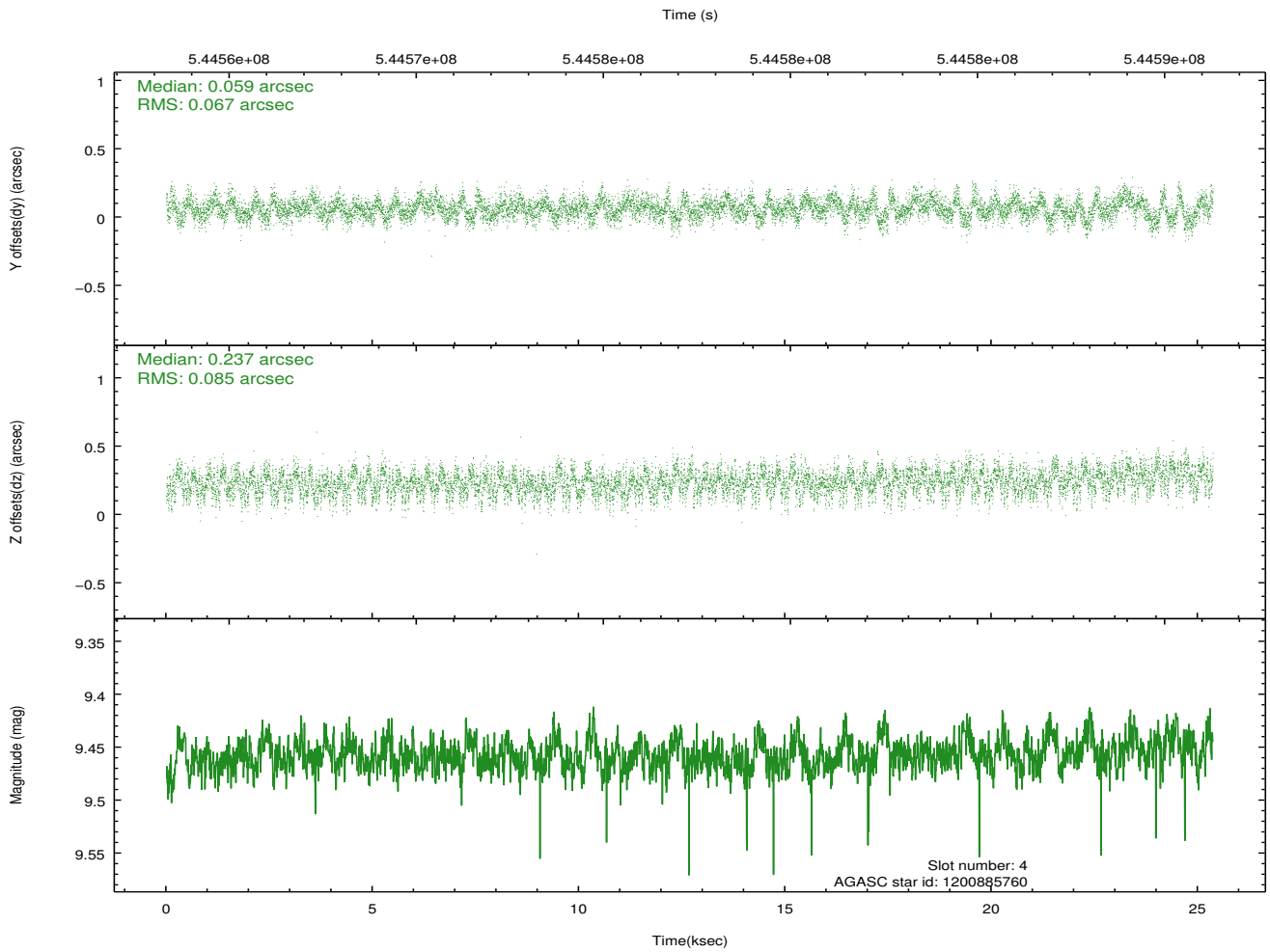
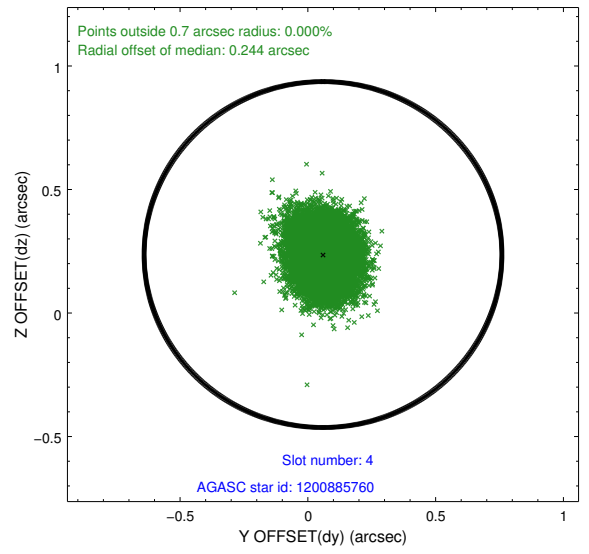
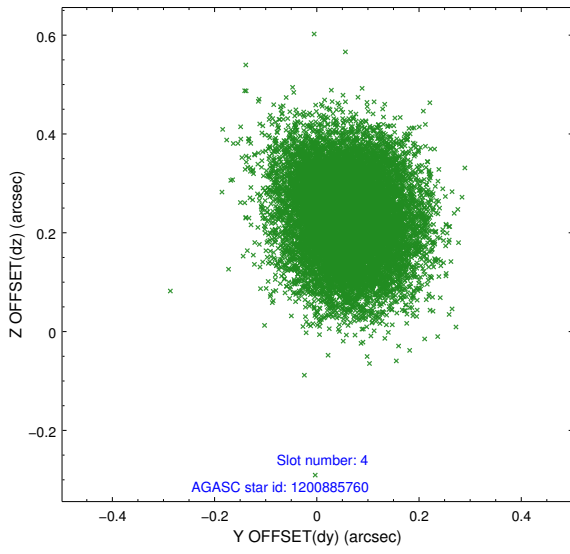
∞

2.4 Star Slots

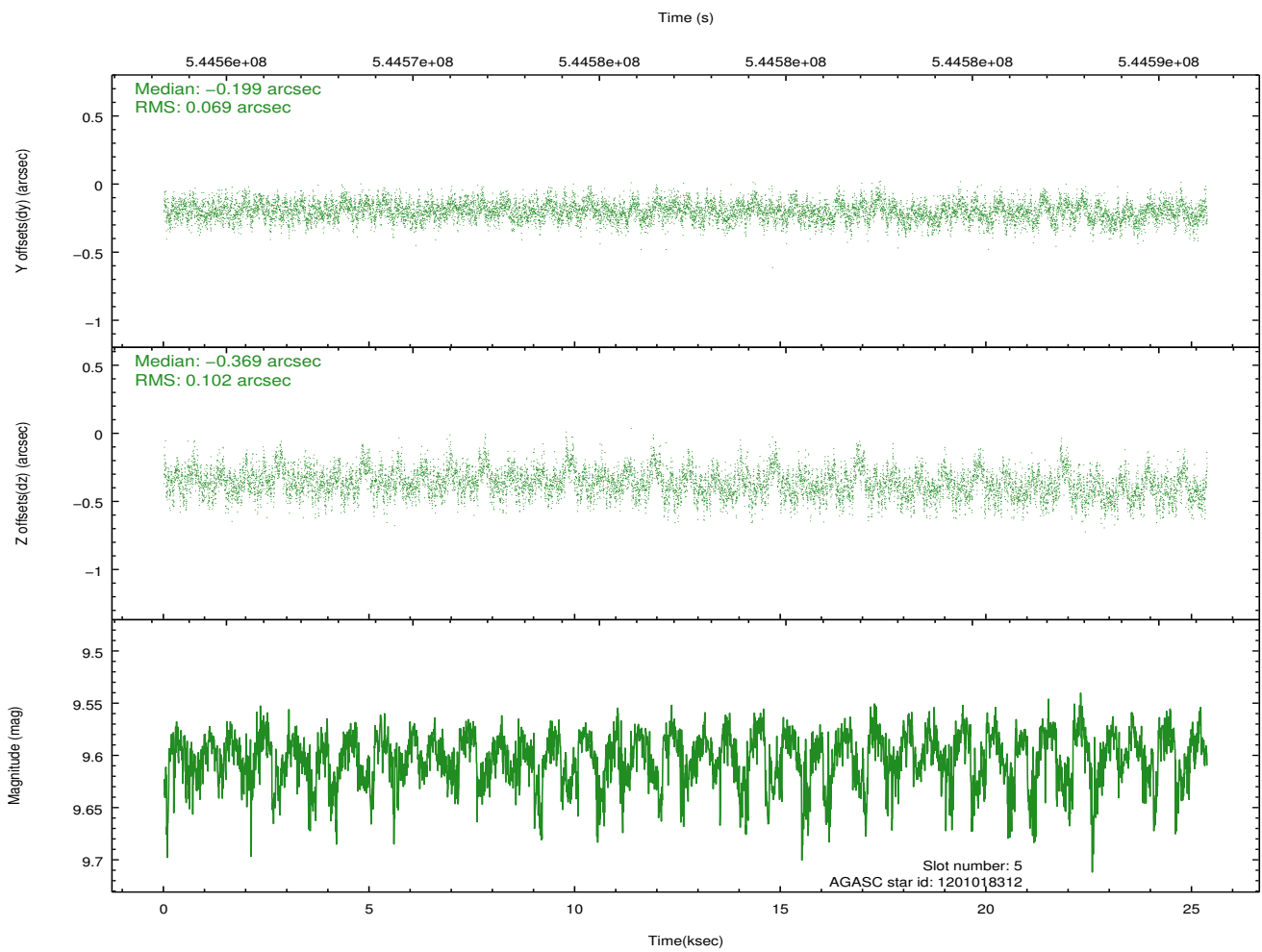
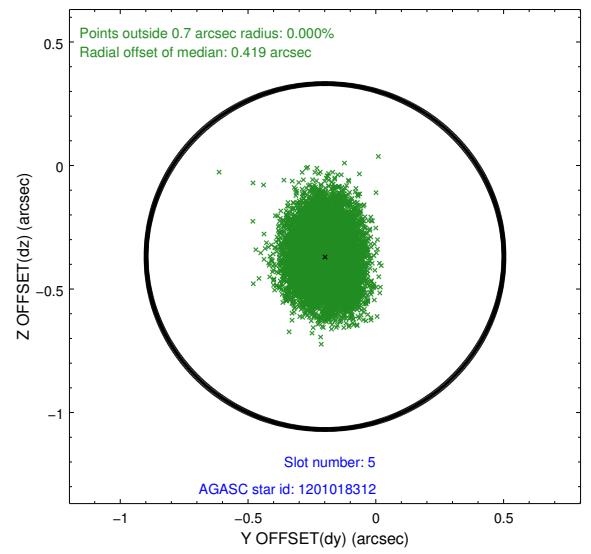
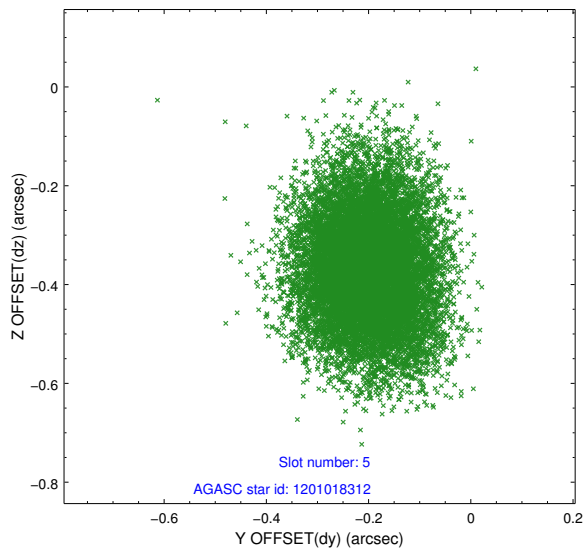
2.4.1 Slot 3



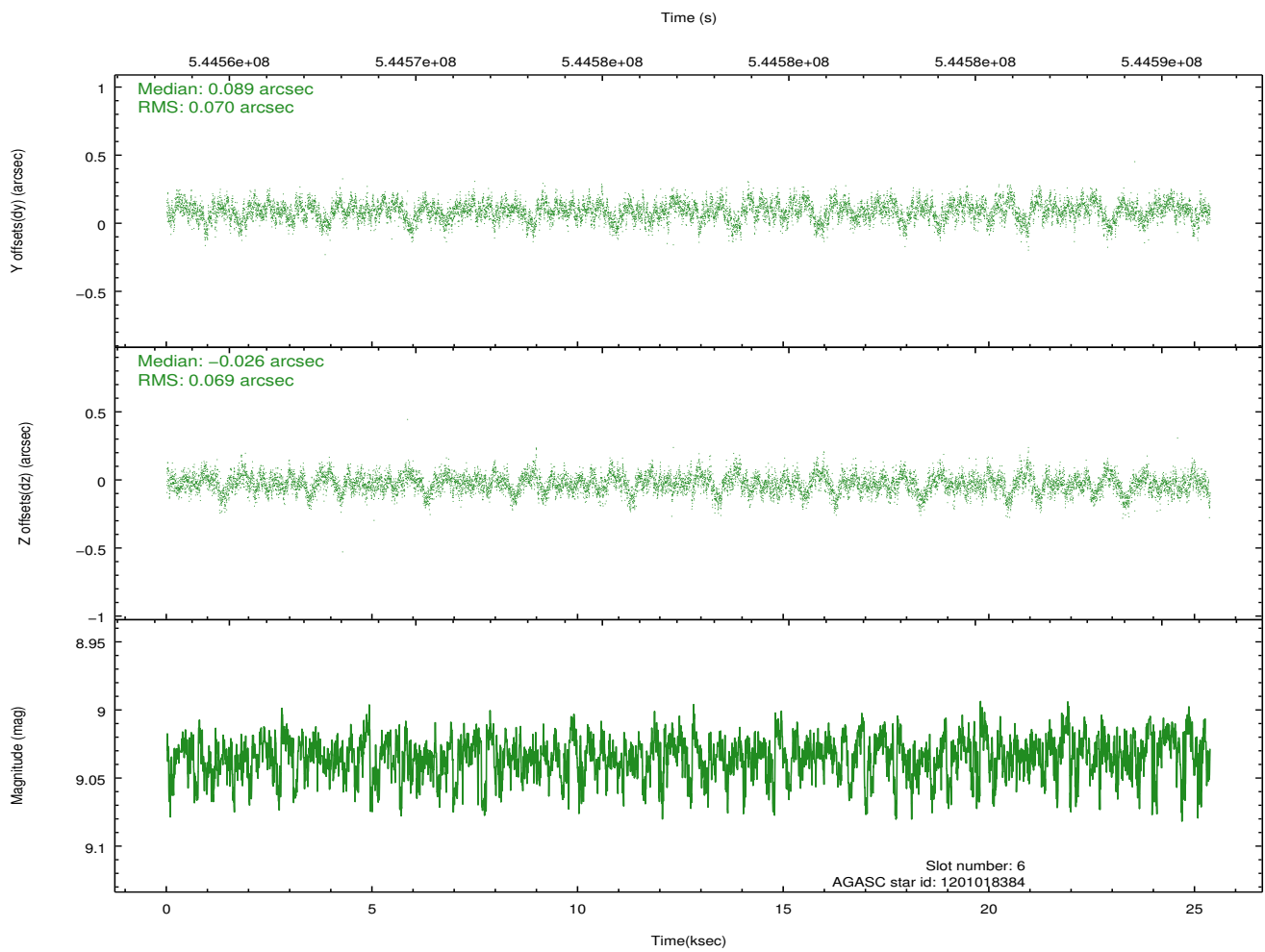
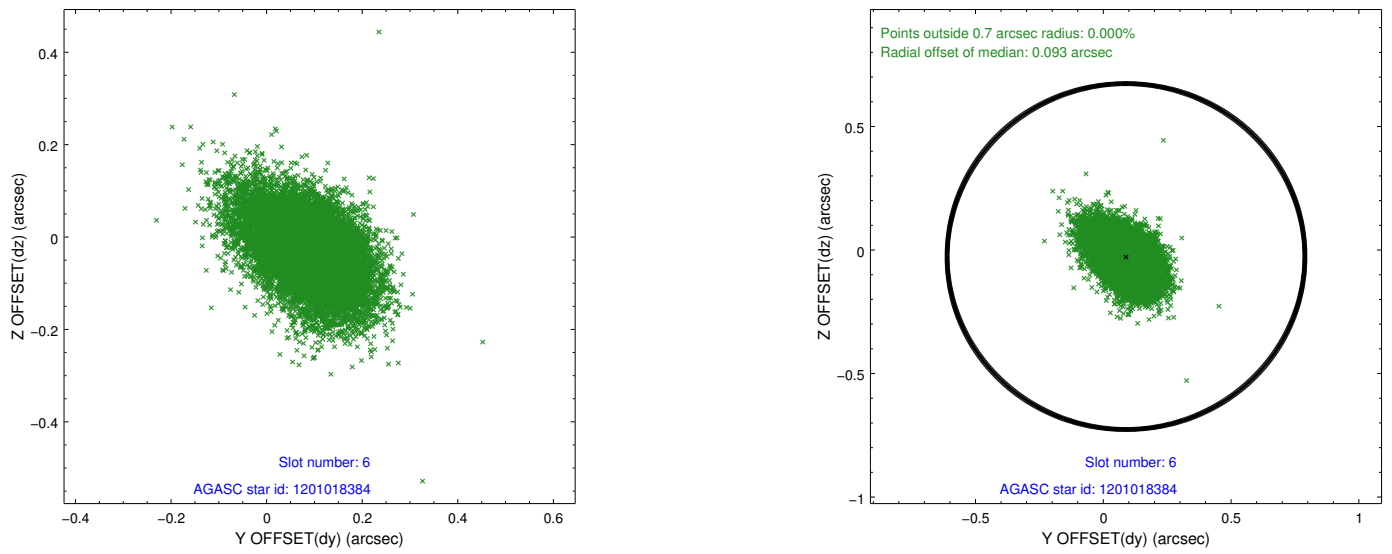
2.4.2 Slot 4



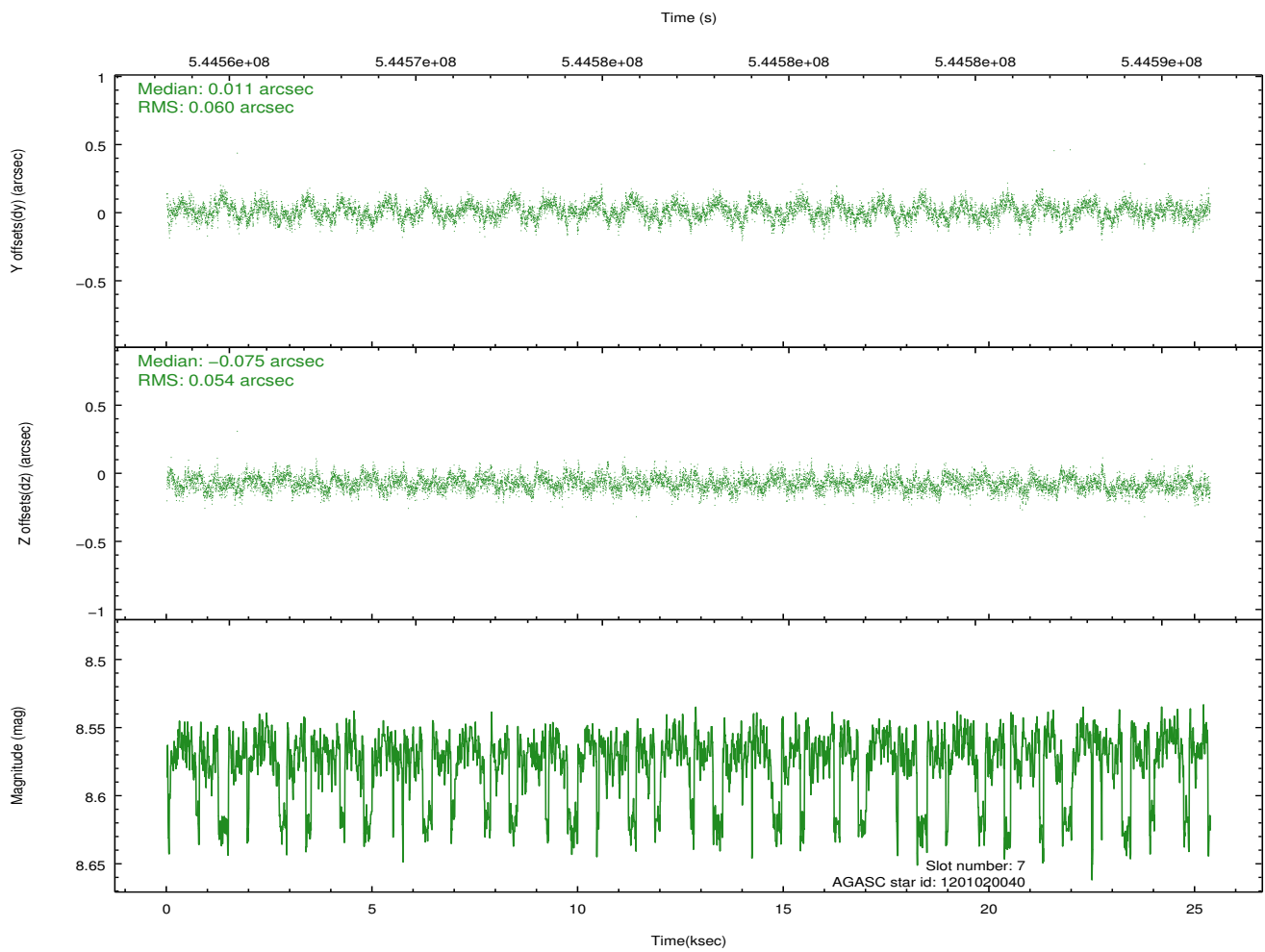
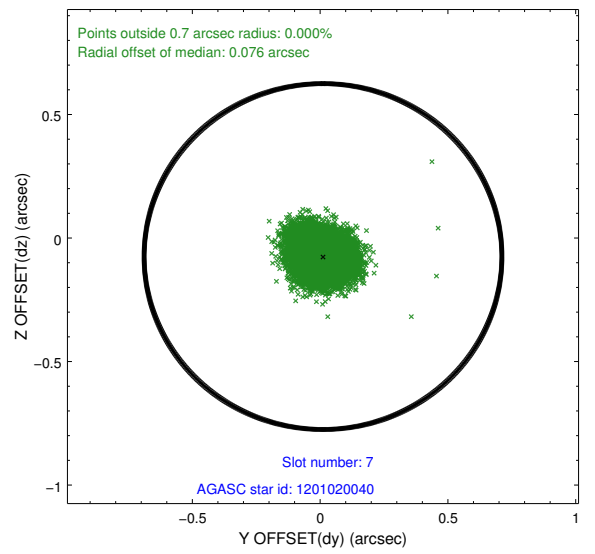
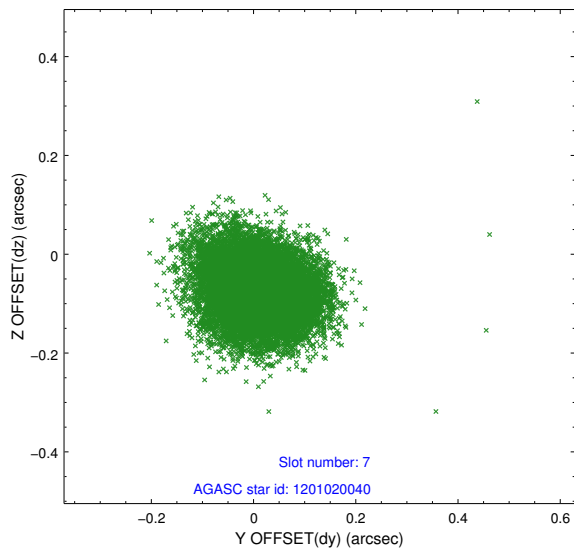
2.4.3 Slot 5



2.4.4 Slot 6

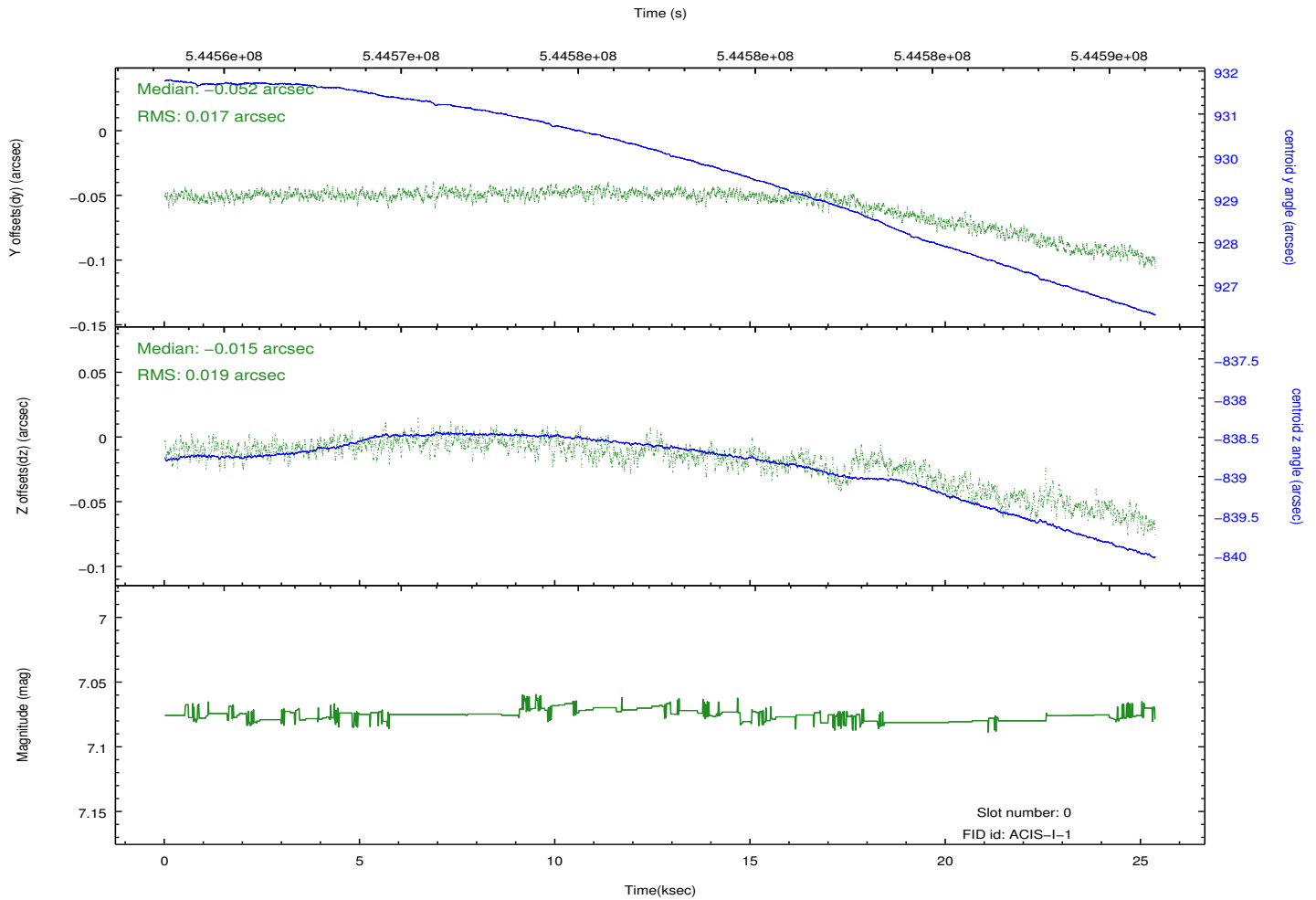
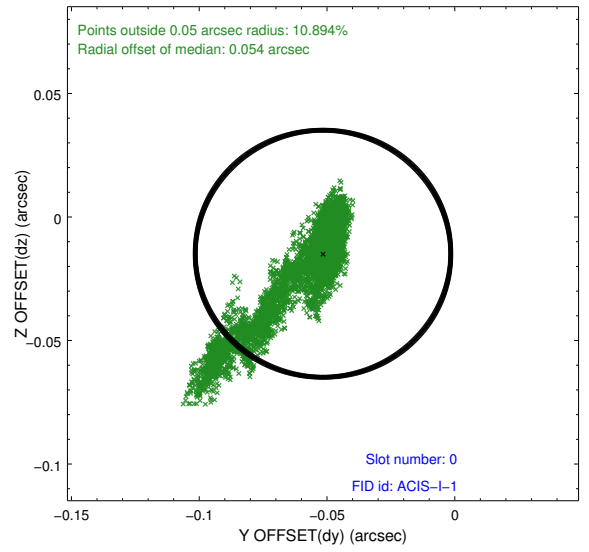
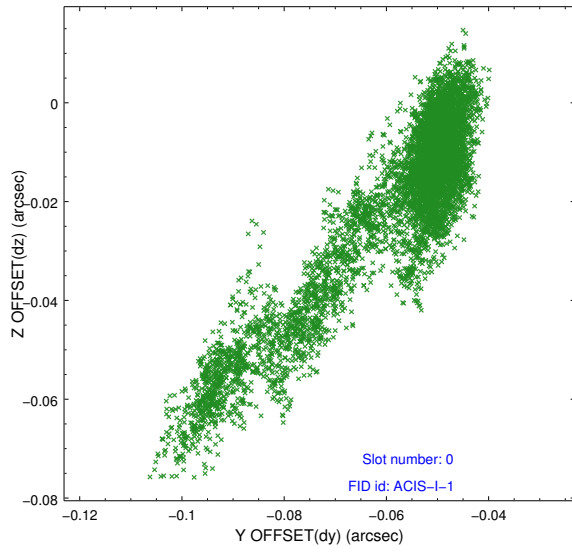


2.4.5 Slot 7

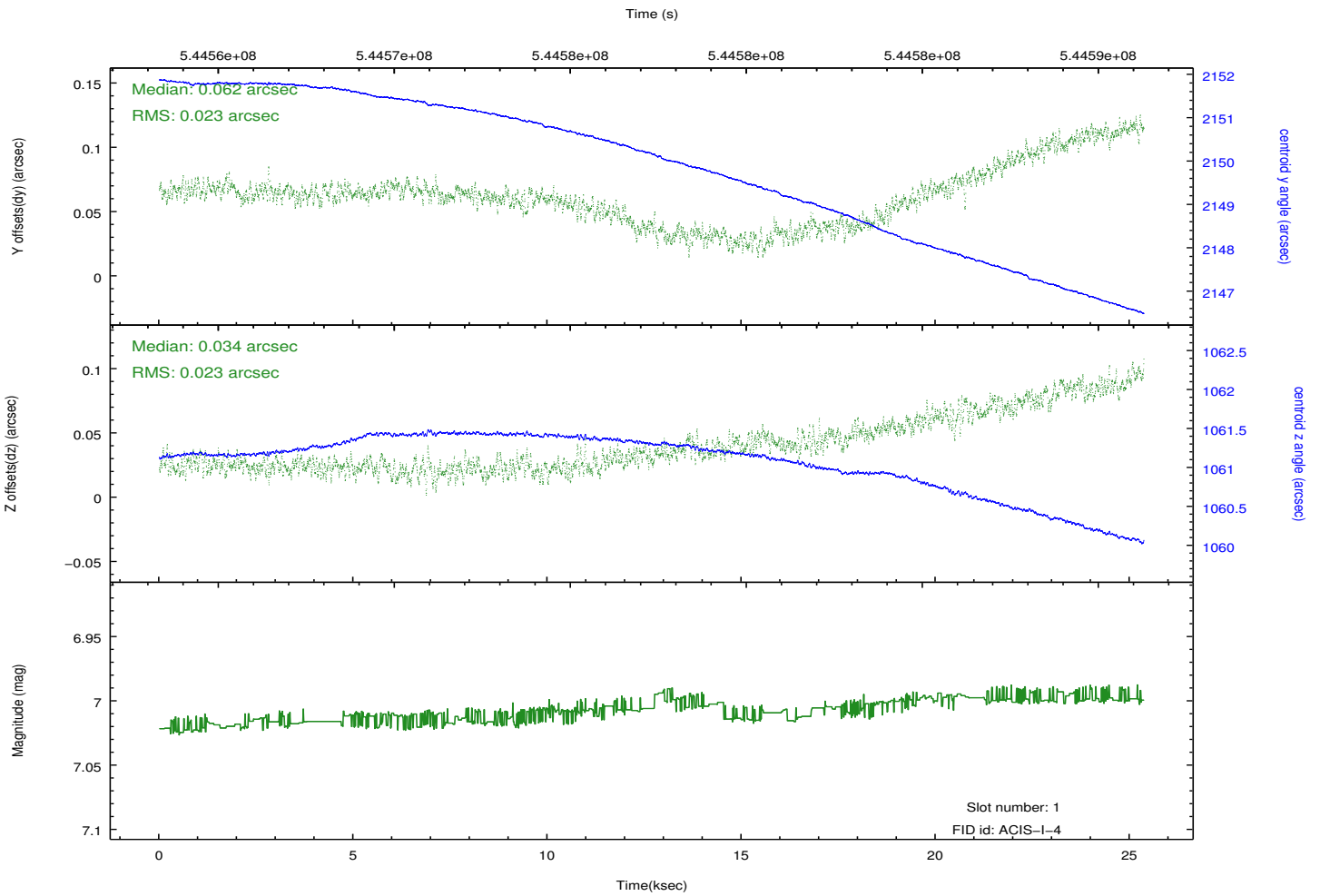
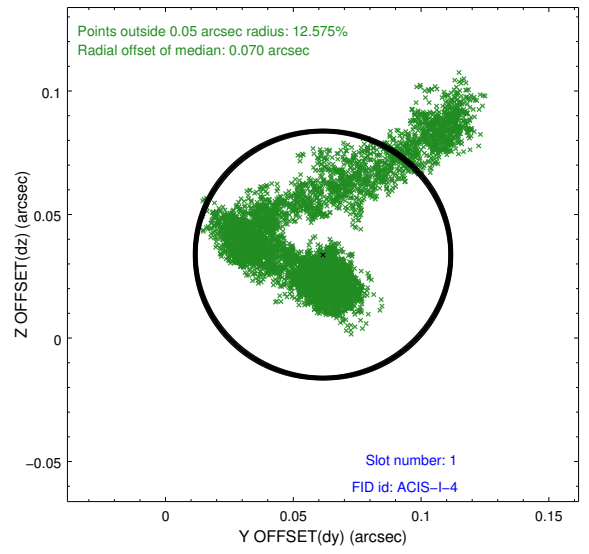
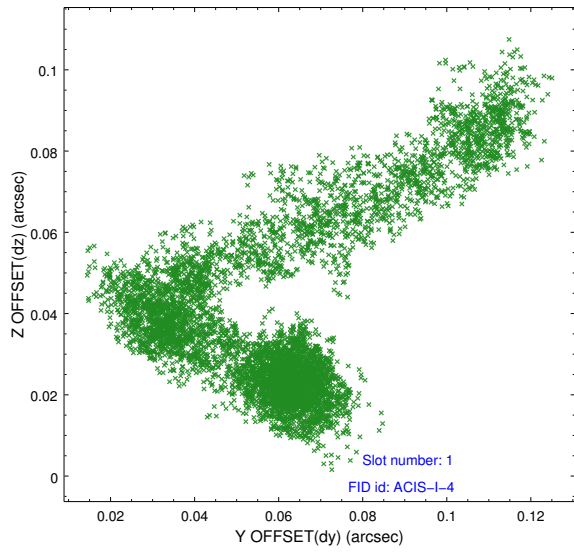


2.5 FID Slots

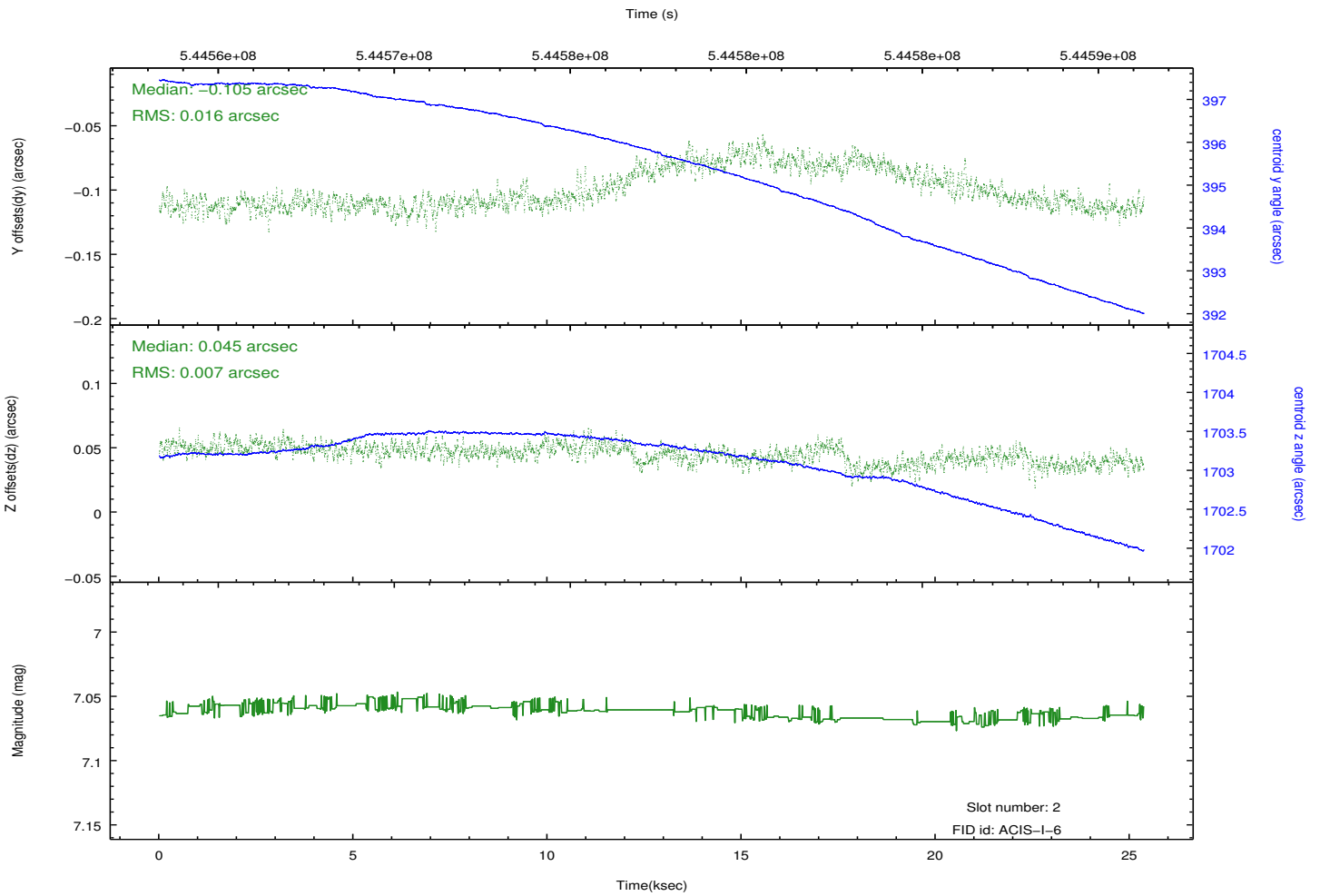
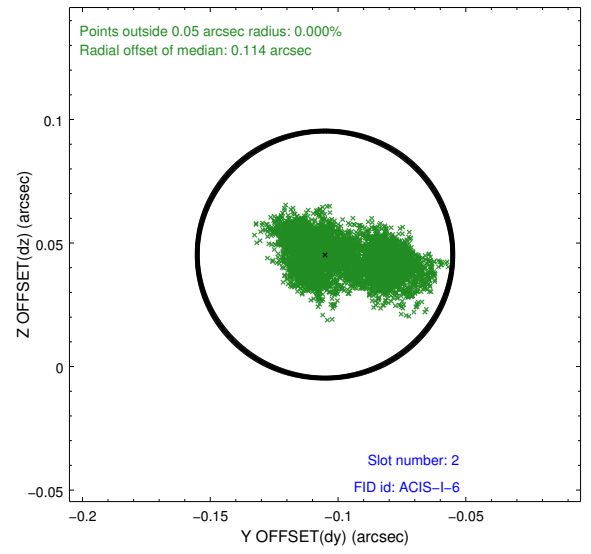
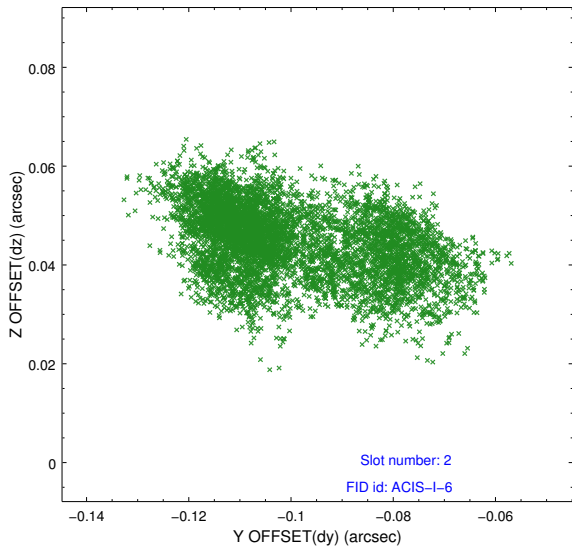
2.5.1 Slot 0



2.5.2 Slot 1



2.5.3 Slot 2



A Summary

A.1 Status

V&V Scientist	Jen Lauer
V&V Date (YYYY-MM-DD)	2015.04.06
V&V Edition	1
V&V Disposition and Status	OK
V&V Charge Time	24.95351841116

A.2 Comments