

V&V Reference Report

L2 ASCDS Version : 8.4.5

Observation 1851 - L2 Version 5
Chandra X-Ray Center

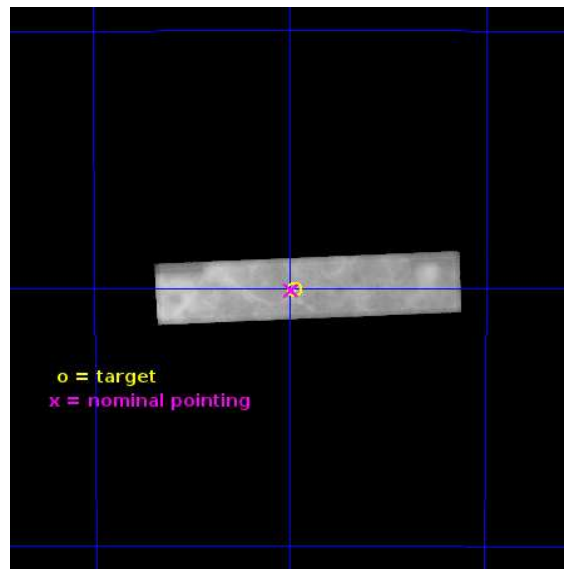
L2 Processing Date : Jun 28 2013

Contents

1	Front	2
2	OBI	3
2.1	OBI	3
2.1.1	Images	3
2.1.2	Parameters	4
2.1.3	Events	4
2.2	Compared Parameters	5
2.3	Aspect	6
2.4	Star Slots	9
2.4.1	Slot 3	9
2.4.2	Slot 4	10
2.4.3	Slot 5	11
2.4.4	Slot 6	12
2.4.5	Slot 7	13
2.5	FID Slots	14
2.5.1	Slot 0	14
2.5.2	Slot 1	15
2.5.3	Slot 2	16
A	Summary	17
A.1	Status	17
A.2	Comments	17

1 Front

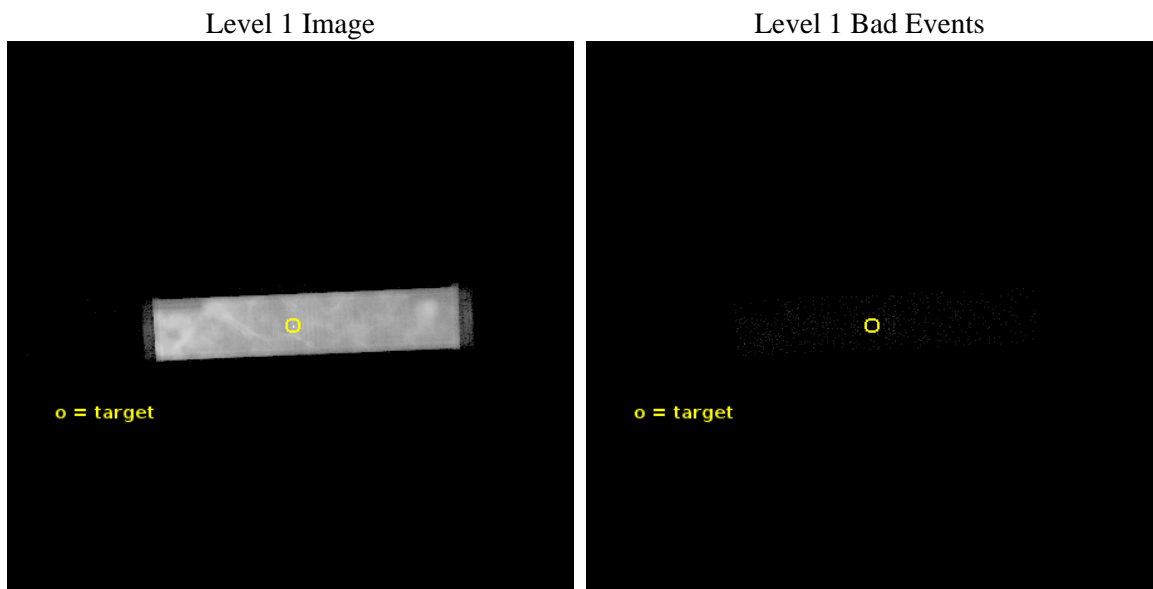
seq_num	500122	Sequence number
obs_id	1851	Observation id
title	RADIO-SILENT NEUTRON STARS IN SUPERNOVA REMNANTS	Proposal title
observer	Dr. George Pavlov	Principal investigator
object	RX J0822-4300	Source name
ra_targ	125.489583	Observer's specified target RA [deg]
dec_targ	-43.004361	Observer's specified target Dec [deg]
ra_nom	125.49614800221	Nominal RA [deg]
dec_nom	-43.004736349266	Nominal Dec [deg]
roll_nom	357.43306151505	Nominal Roll [deg]
revision	5	Processing version of data
ontime	19666.932006583	[s]
livetime	19522.940935366	Ontime multiplied by DTCOR
l2events	1812147	Number of level 2 events



2 OBI

2.1 OBI

2.1.1 Images



2.1.2 Parameters

obi_num	0	Obi number	sched_exp_time	19500.000000	[s] Scheduled observation exposure time
ascdsver	10	Processing system revision	ontime	19666.932006583	[s]
caldbver	4.5.7	 	l1events	2182504	Number of level 1 events
date	2013-06-28T23:21:07	Date and time of file creation			
revision	5	Processing version of data			

2.1.3 Events

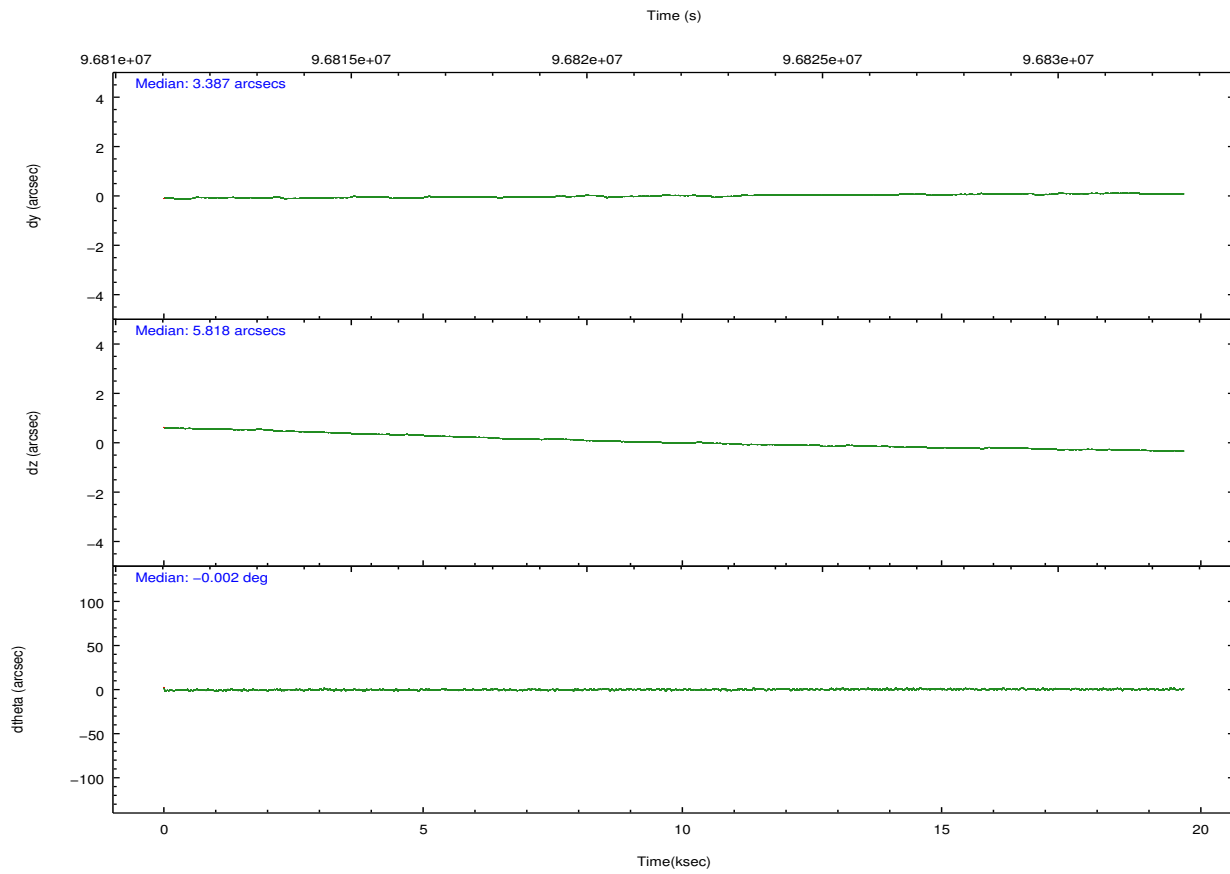
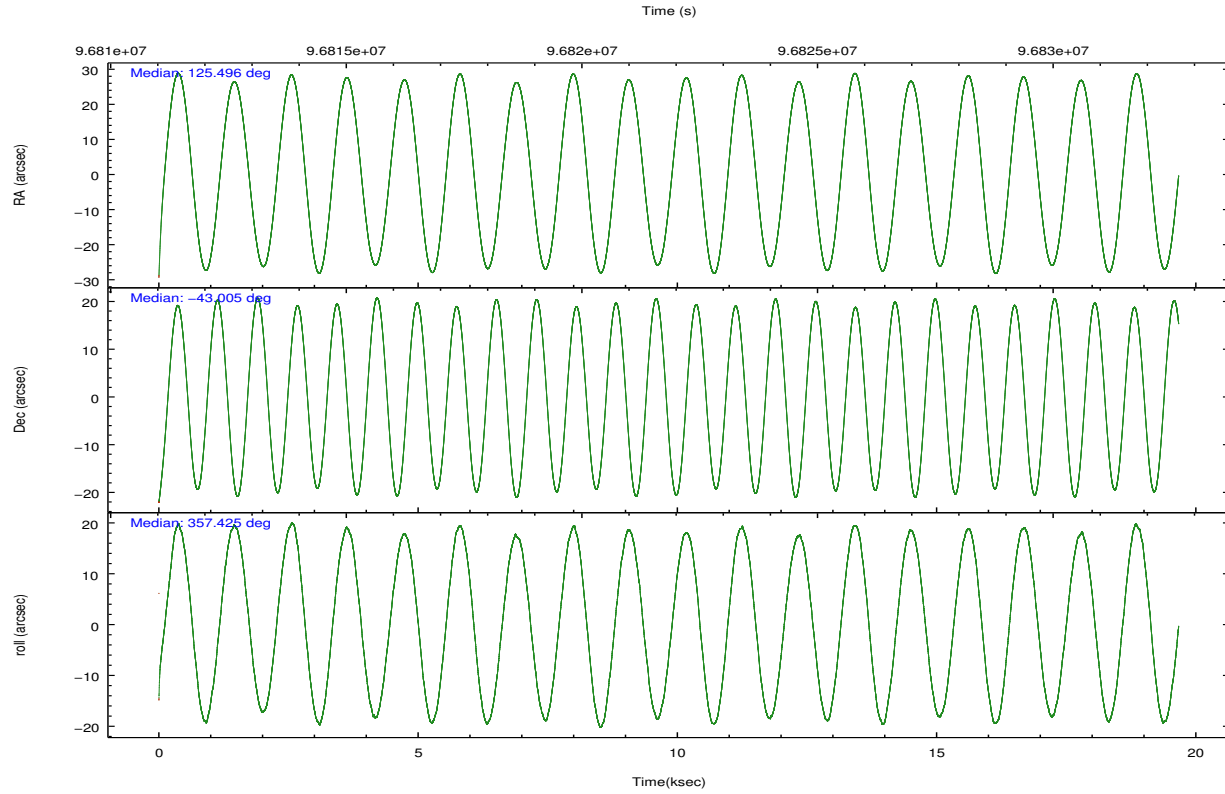
Level 1 Events

	segment 1	segment 2	segment 3
level 1 events	23039	2135560	23905
rejected events	21912	34902	23901
rejected %	95%	1%	99%

2.2 Compared Parameters

Parameter	Planned	Actual	Parameter	Planned	Actual
Instrument	HRC	HRC	Obspar format version number	7	7
Detector	HRC-S	HRC-S	Obspar file type	PREDICTED	ACTUAL
Grating	NONE	NONE	Obspar update status	NONE	UPDATED
Data mode	OBSERVING	OBSERVING			
Observation mode	POINTING	POINTING			
[deg] Pointing RA	125.462183	125.496148002207			
[deg] Pointing Dec	-43.019113	-43.00473634926571			
[deg] Pointing Roll	357.342556	357.4330615150503			
[mm] SIM focus pos	-1.429586	-1.428180813131781			
[mm] SIM defocus	0.1037507710433287	0.1051558262725154			
[mm] SIM translation stage pos	250.455976	250.466033080201			
[mm] SIM translation stage offset	0	-0.01005468664627074			
[s] Observation start time (MET)	96812178.184000	96810904.85752299			
Observation start date	2001-01-25T12:15:14	2001-01-25T11:55:04			
[s] Observation end time (MET)	96831678.184000	96832653.820859			
Observation end date	2001-01-25T17:40:14	2001-01-25T17:57:33			

2.3 Aspect

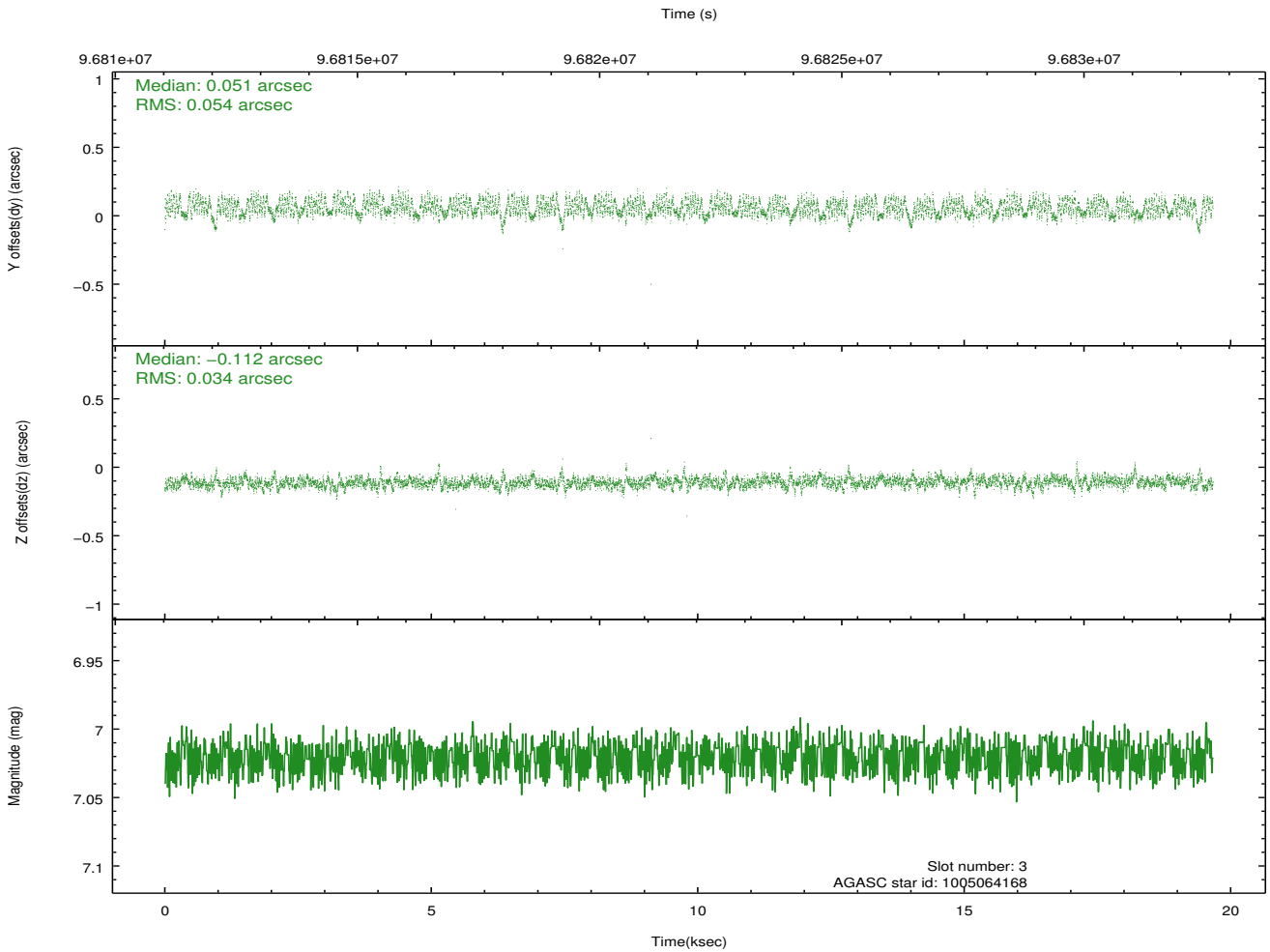
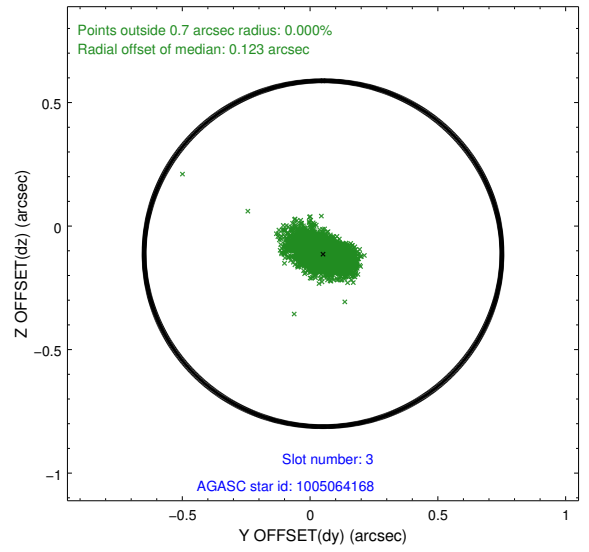
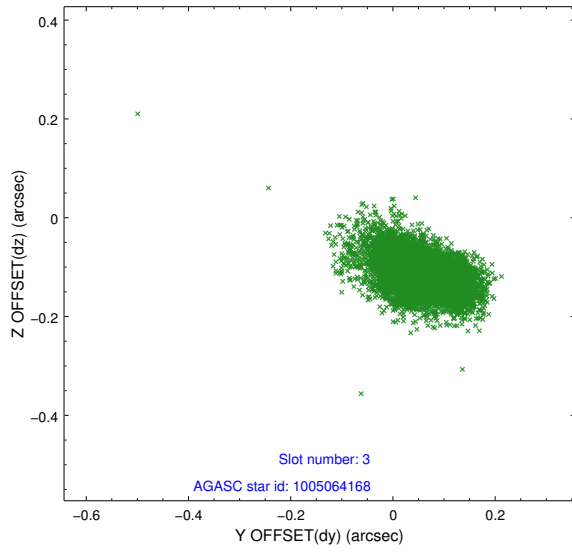


Slot Statistics

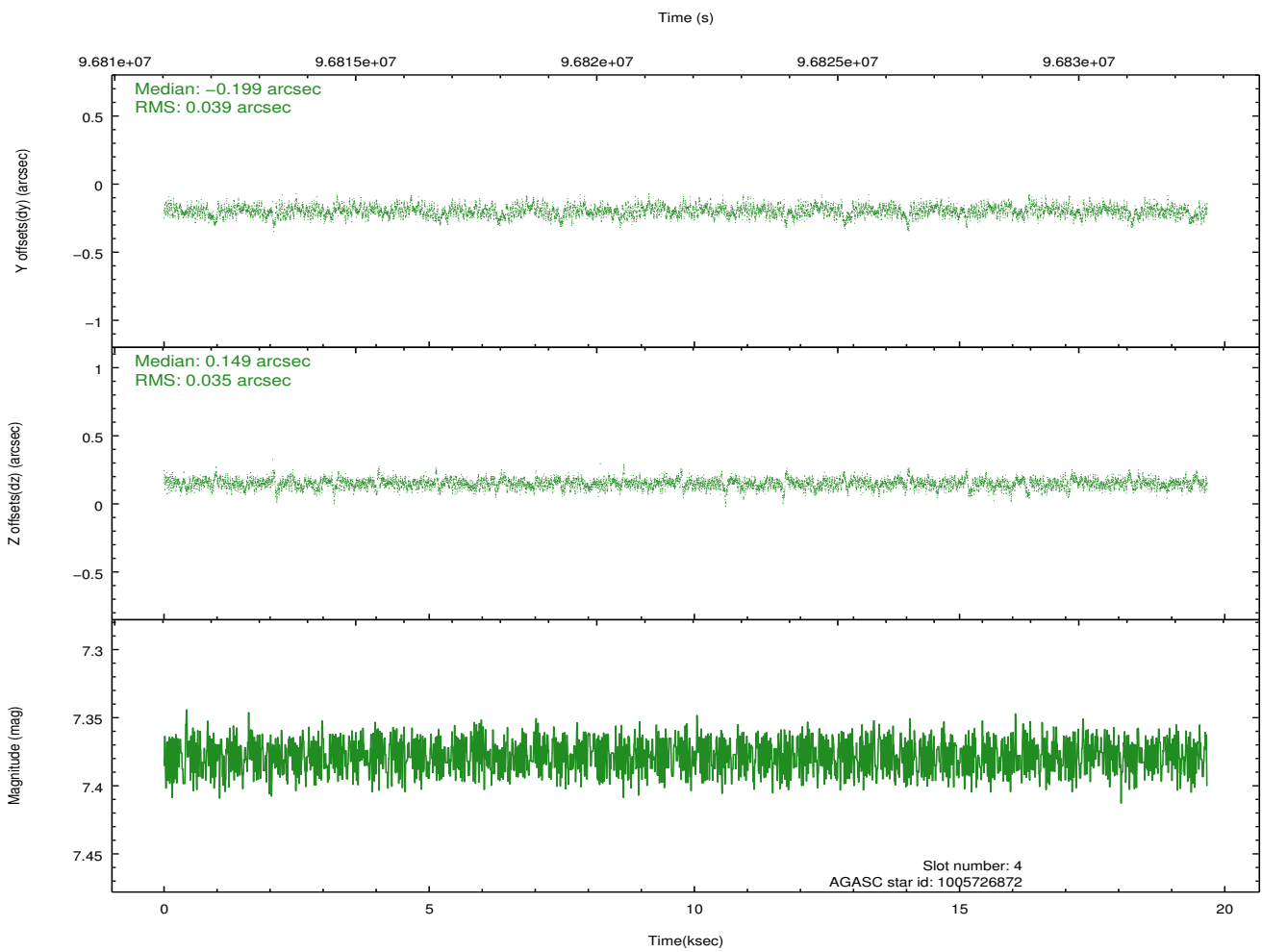
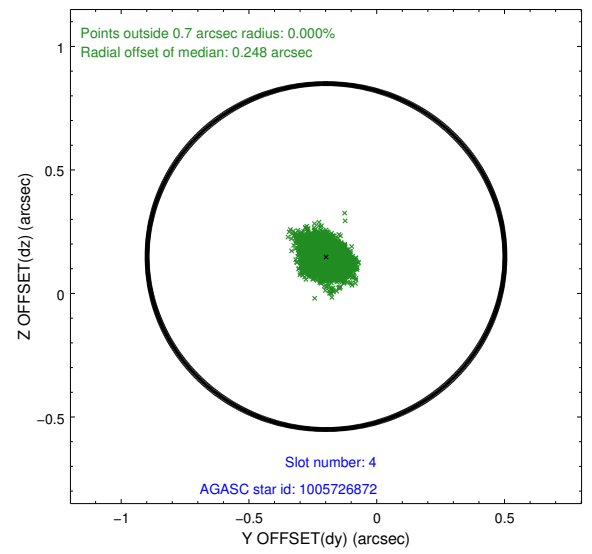
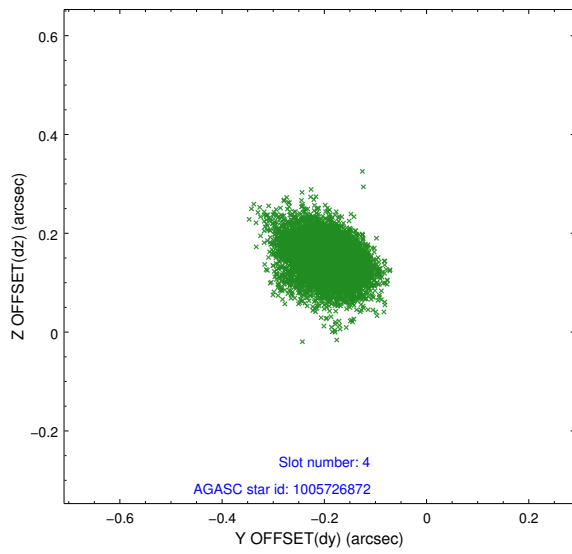
slot	status	id	mag	n_pts	med_dy	med_dz	dr1	dr2	ra	dec	mean_y	mean_z
0	FID	HRC-S-1	6.98	4797	0.155	-0.149	0.015	0.031	0.000000	0.000000	-1157.43	-454.39
1	FID	HRC-S-2	6.98	4797	0.089	-0.094	0.005	0.009	0.000000	0.000000	1241.94	-447.13
2	FID	HRC-S-3	7.00	4797	0.146	-0.059	0.015	0.033	0.000000	0.000000	-1159.88	575.13
3	GUIDE	1005064168	7.02	9595	0.051	-0.112	0.067	0.111	124.723843	-42.526737	-2039.00	1670.86
4	GUIDE	1005726872	7.38	9593	-0.199	0.149	0.054	0.093	125.535449	-43.662820	297.72	-2305.77
5	GUIDE	1005724040	7.57	9595	0.105	-0.004	0.067	0.276	125.738175	-43.227880	758.07	-718.58
6	GUIDE	1005065848	7.59	9595	0.013	-0.074	0.056	0.091	124.947854	-42.722303	-1408.46	999.78
7	GUIDE	1005723560	8.48	9591	0.023	0.038	0.095	0.142	126.279097	-43.364629	2193.66	-1153.45

2.4 Star Slots

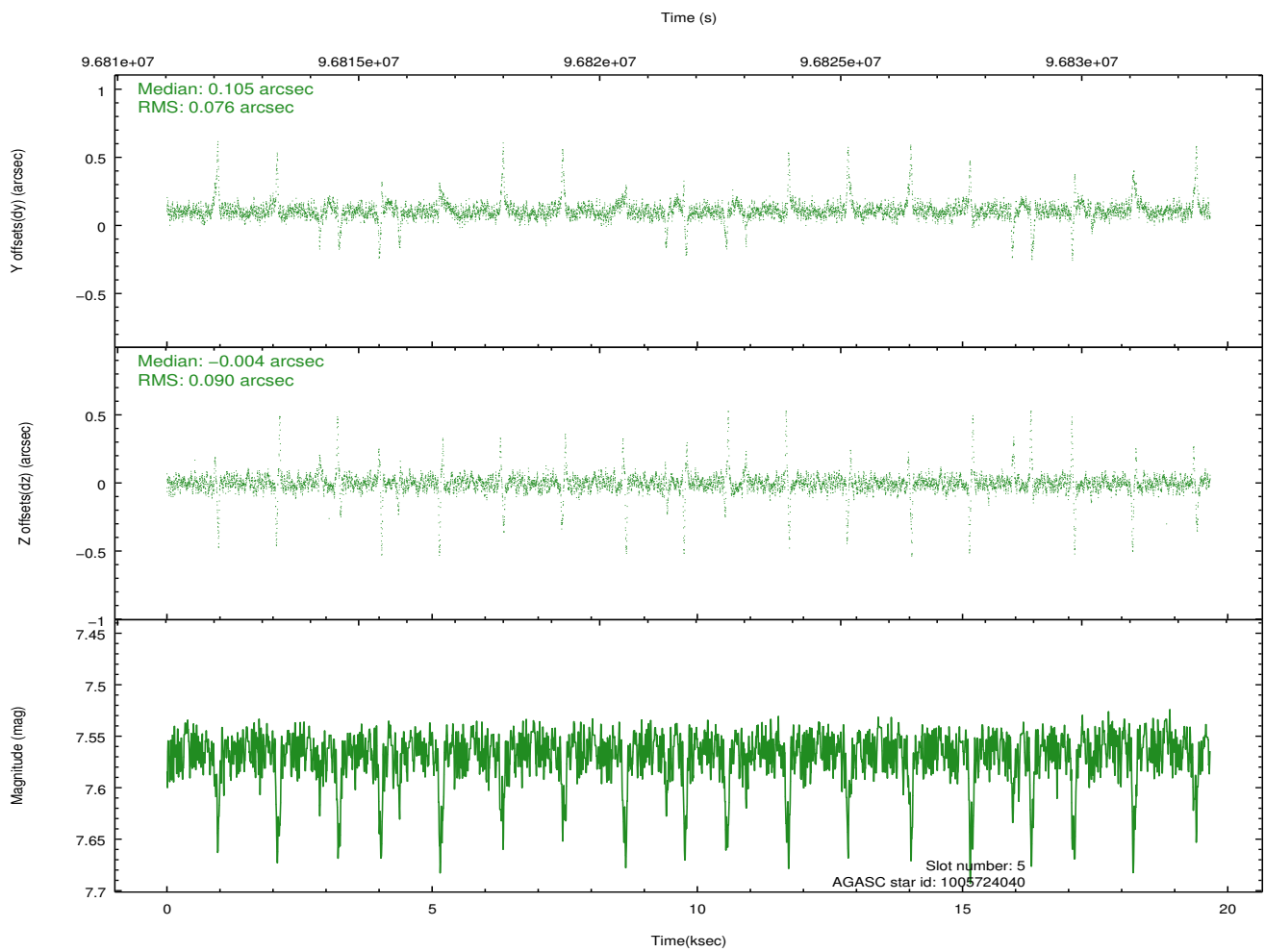
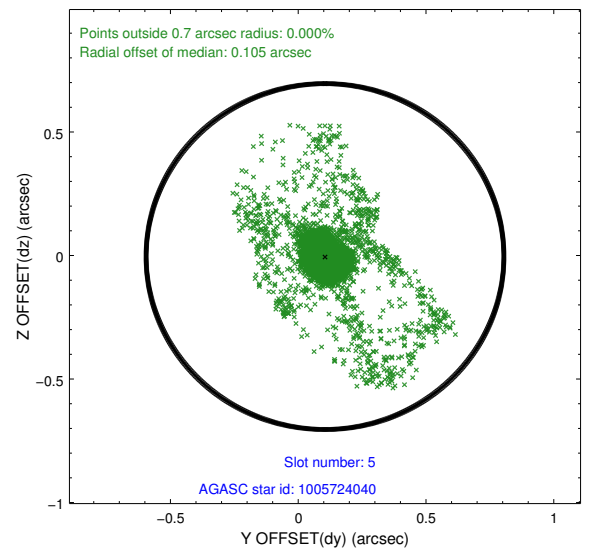
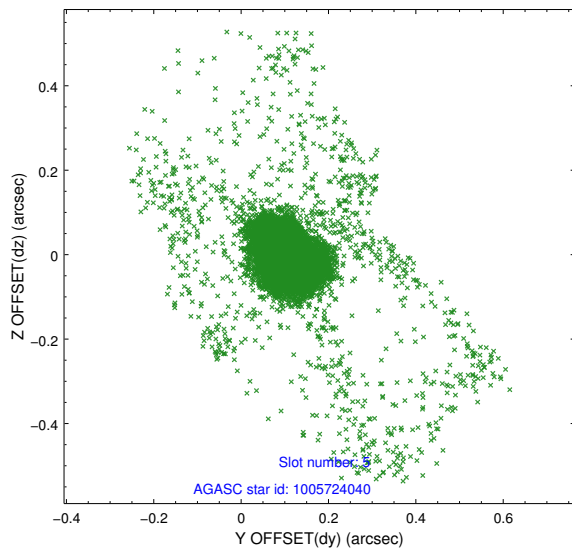
2.4.1 Slot 3



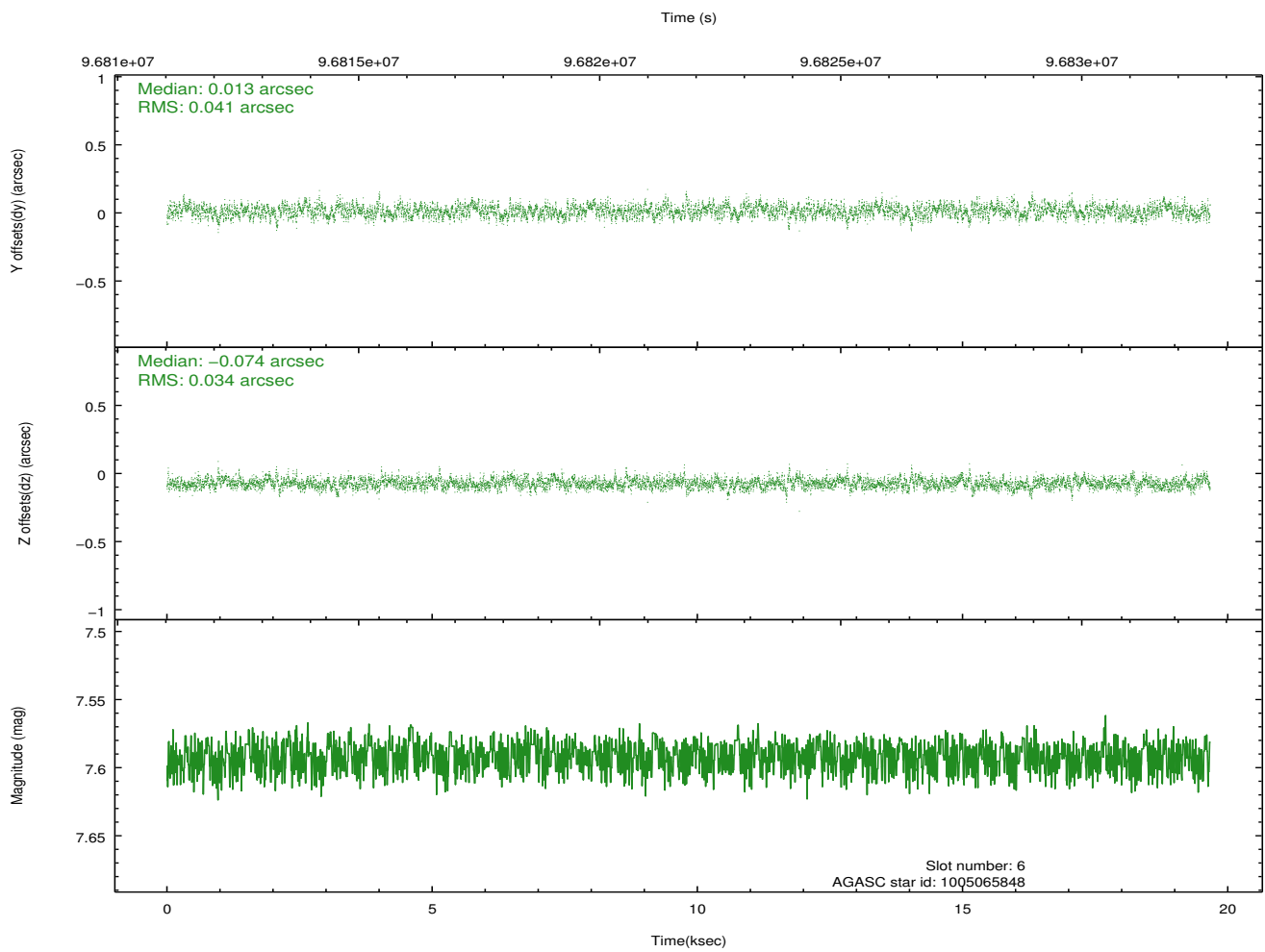
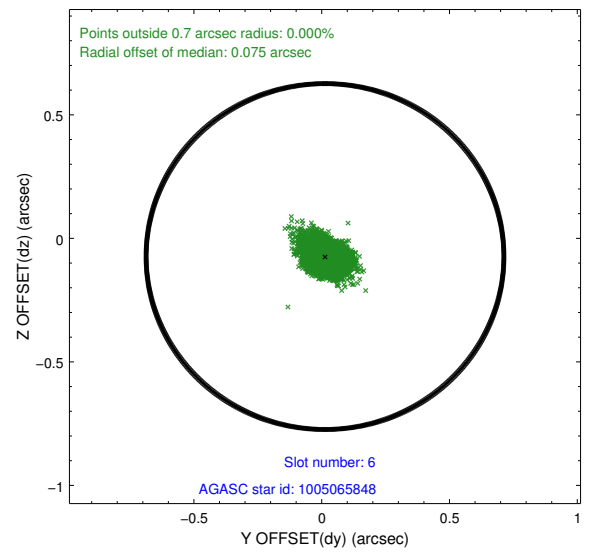
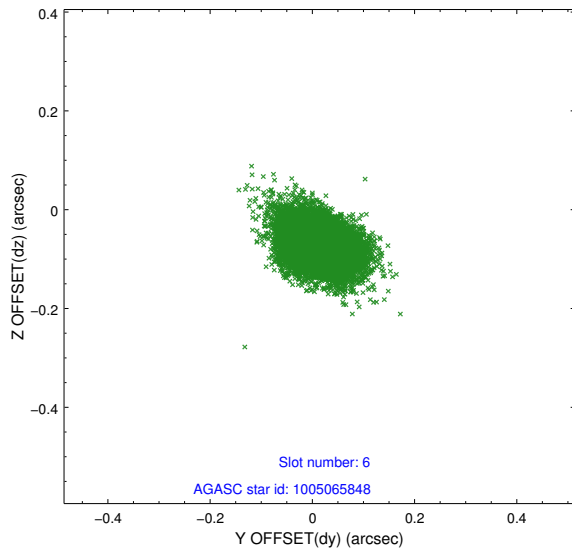
2.4.2 Slot 4



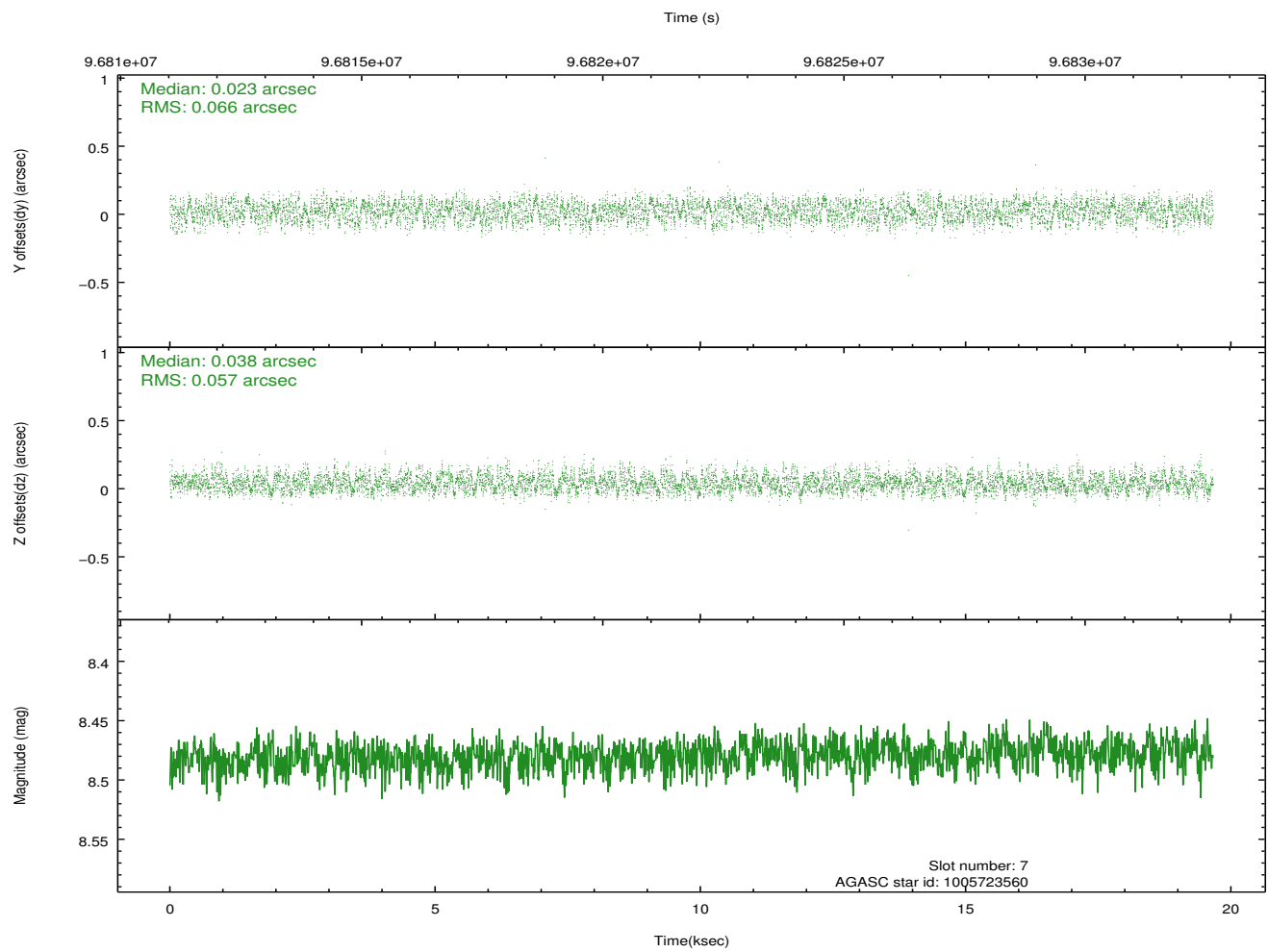
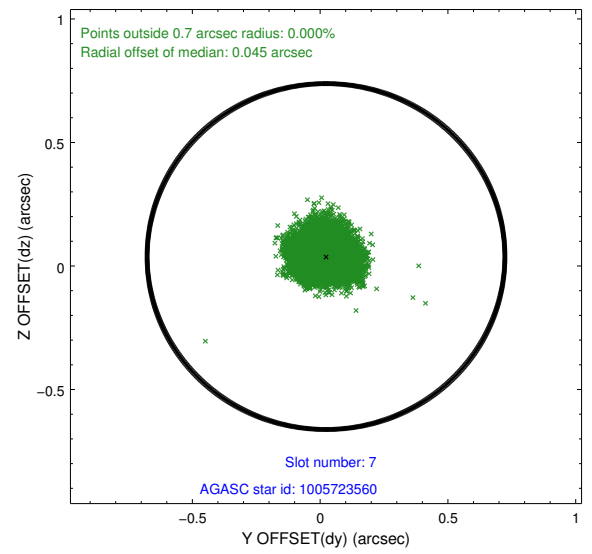
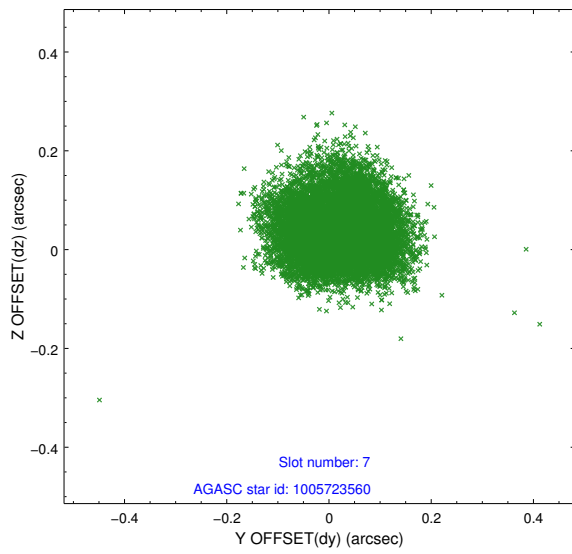
2.4.3 Slot 5



2.4.4 Slot 6

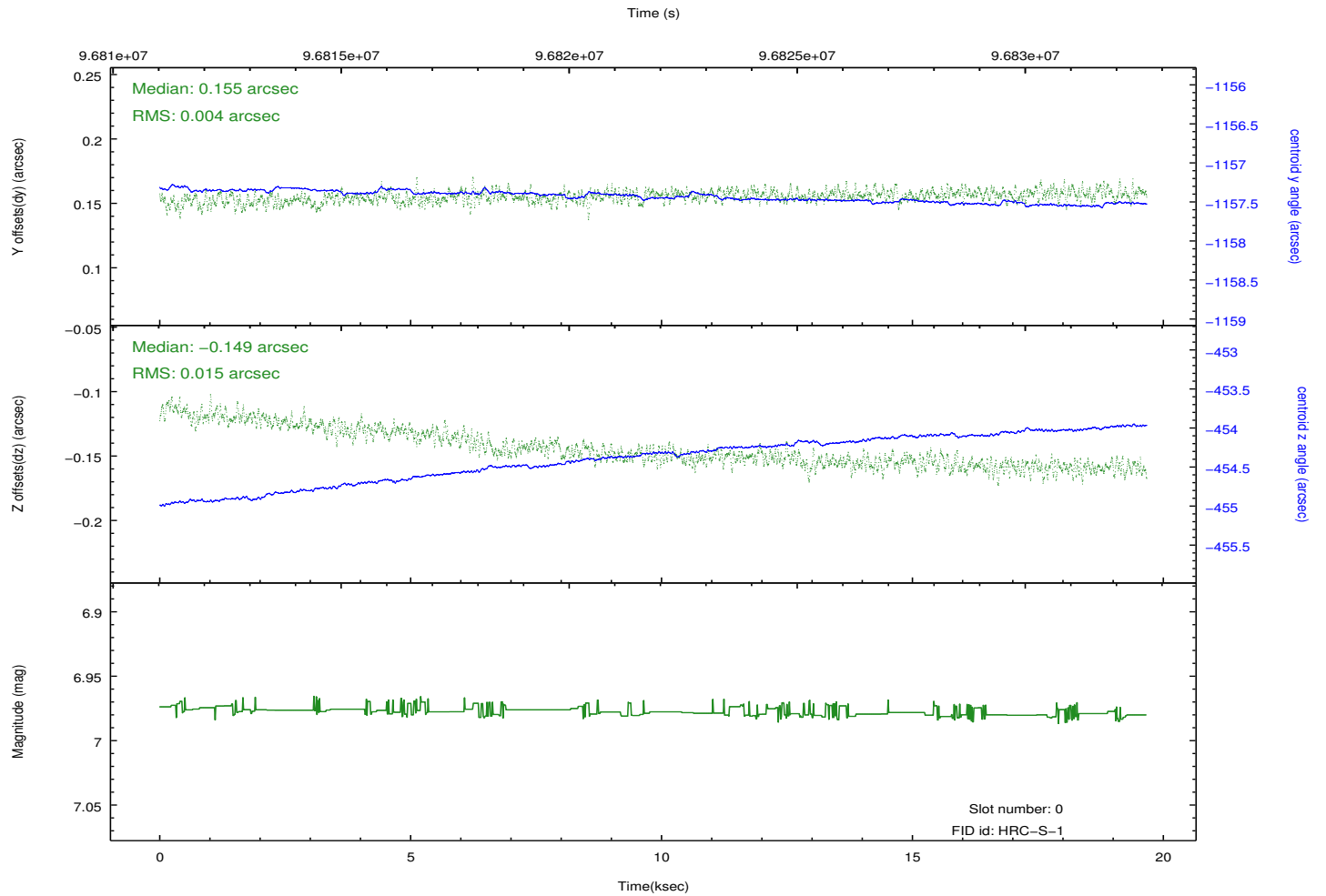
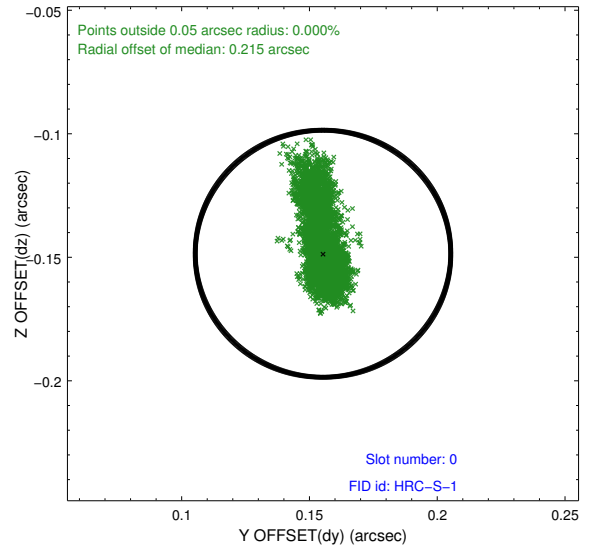
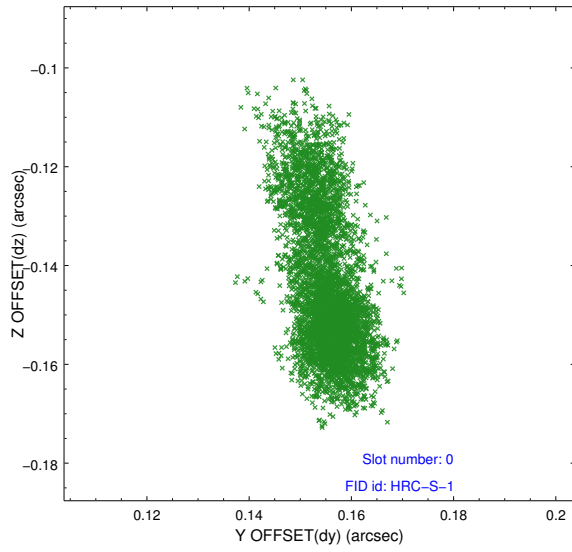


2.4.5 Slot 7

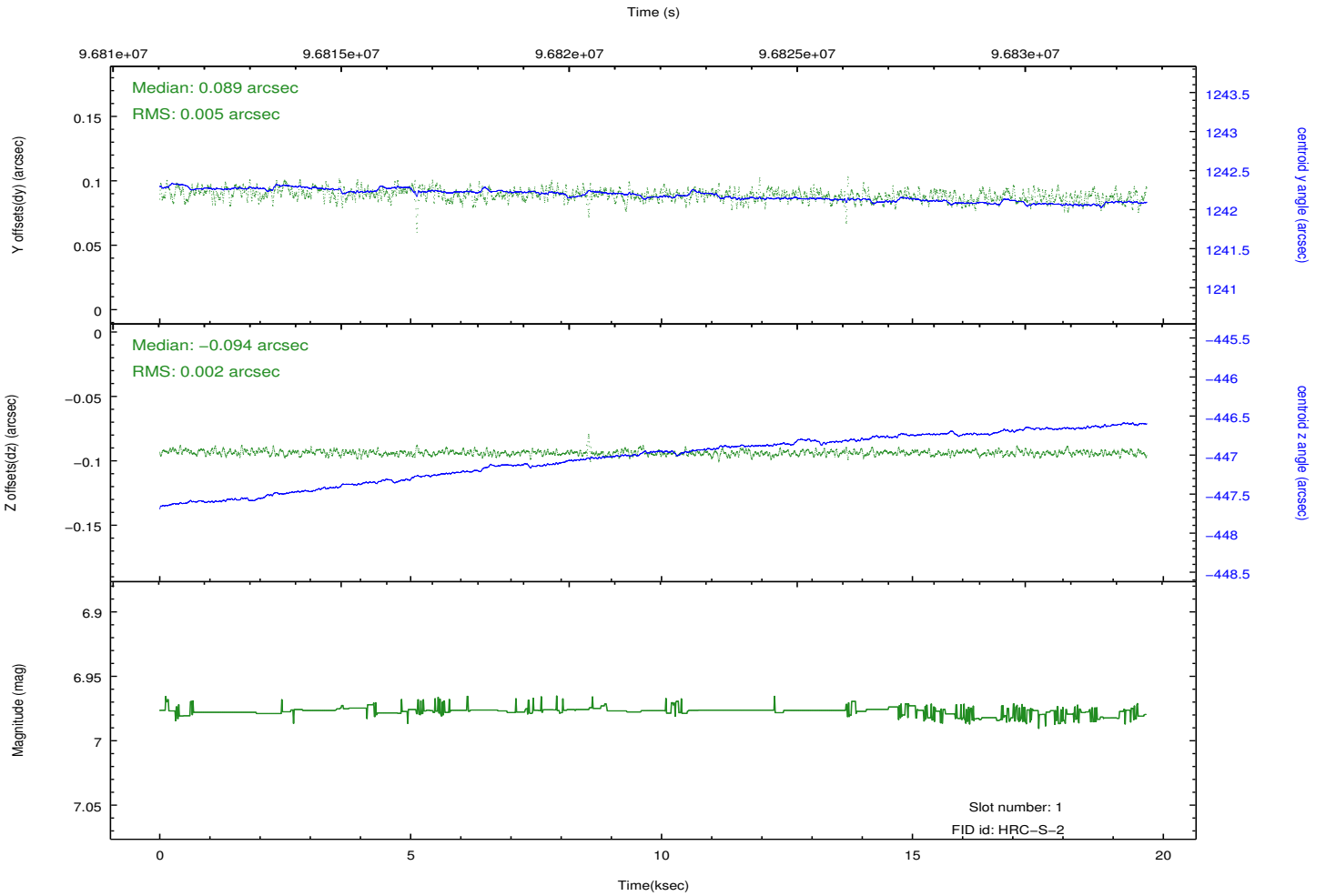
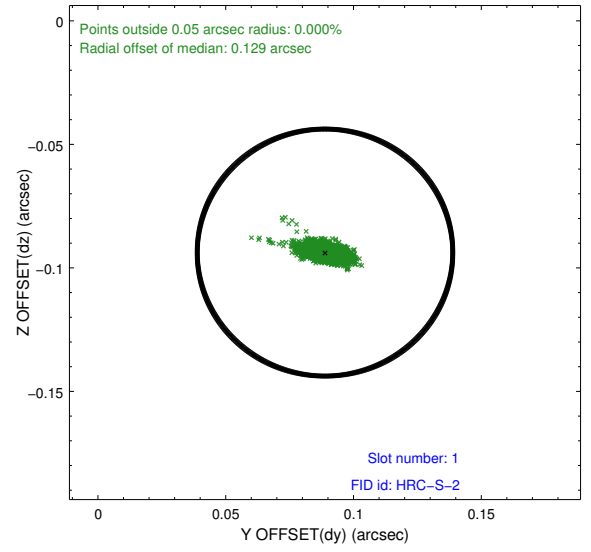
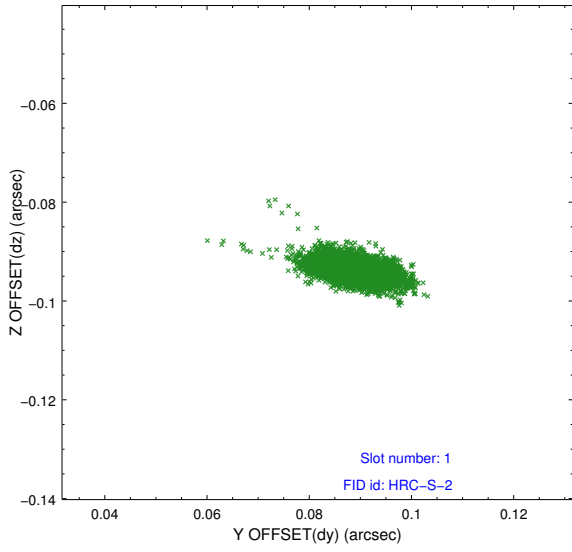


2.5 FID Slots

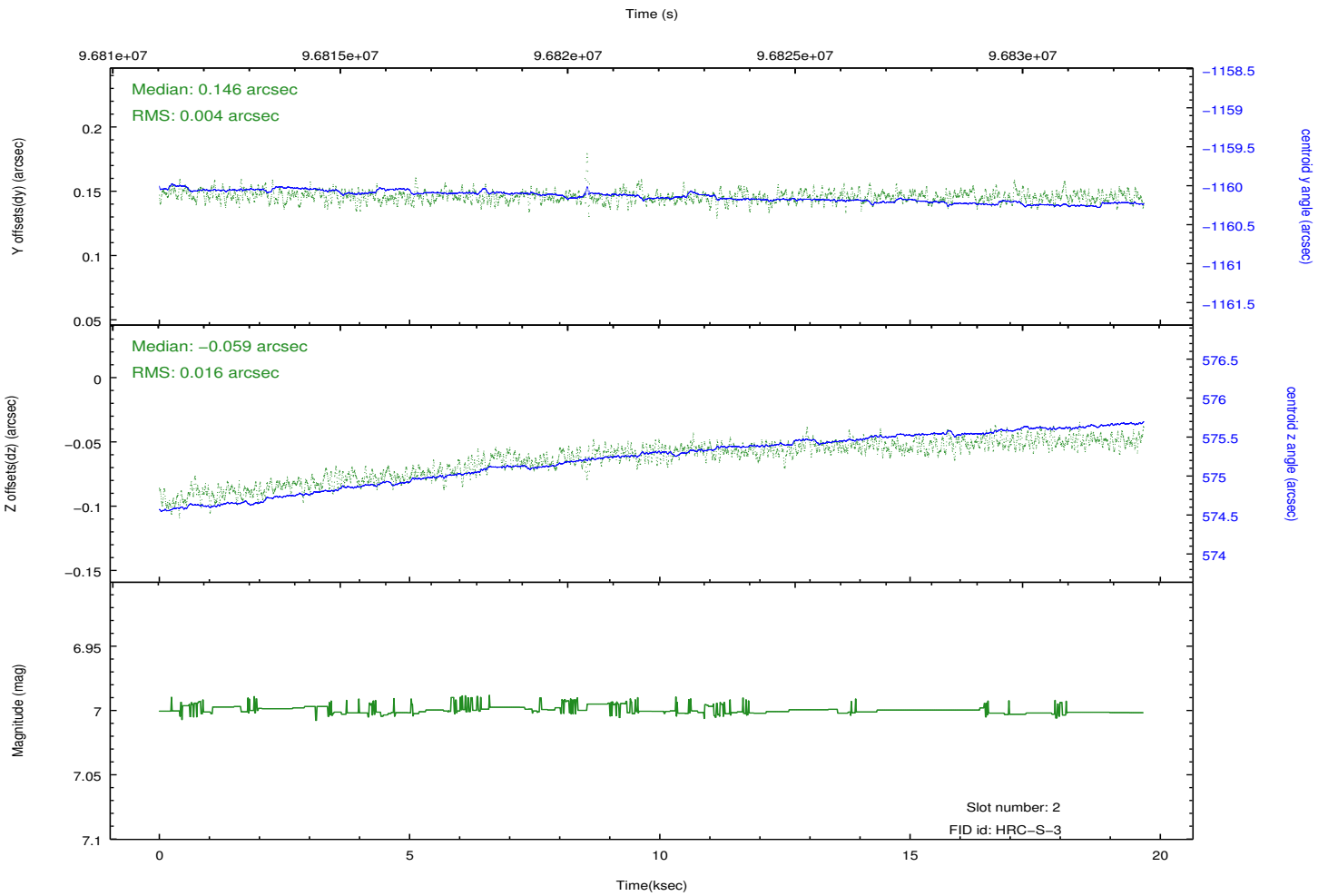
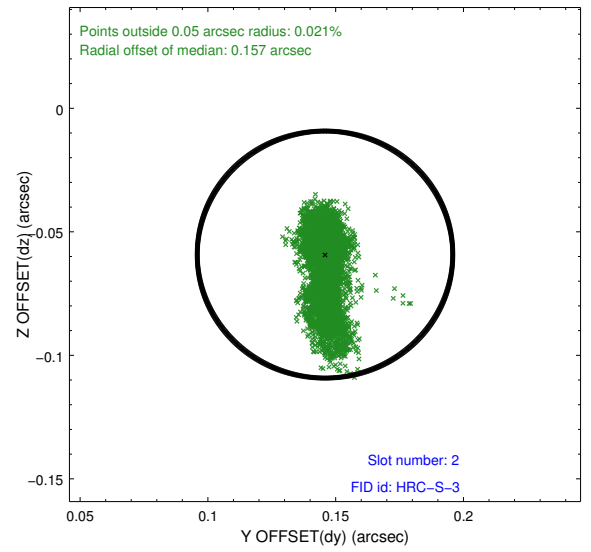
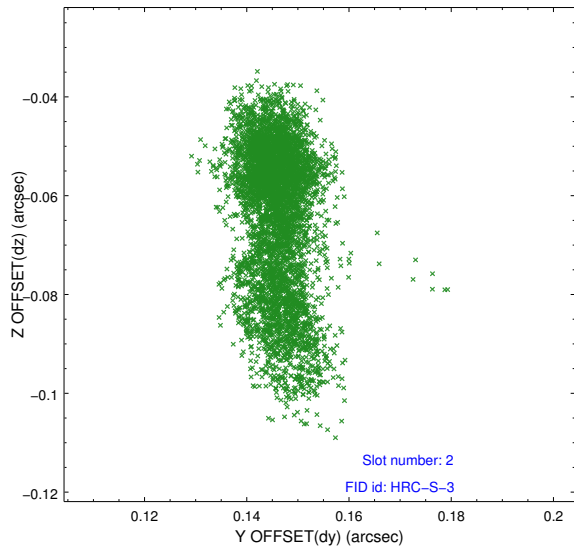
2.5.1 Slot 0



2.5.2 Slot 1



2.5.3 Slot 2



A Summary

A.1 Status

V&V Scientist	Beth Sundheim
V&V Date (YYYY-MM-DD)	2013.07.02
V&V Edition	1
V&V Disposition and Status	OK
V&V Charge Time	19.66

A.2 Comments