

V&V Reference Report

L2 ASCDS Version : 8.4.5

Observation 2581 - L2 Version 3
Chandra X-Ray Center

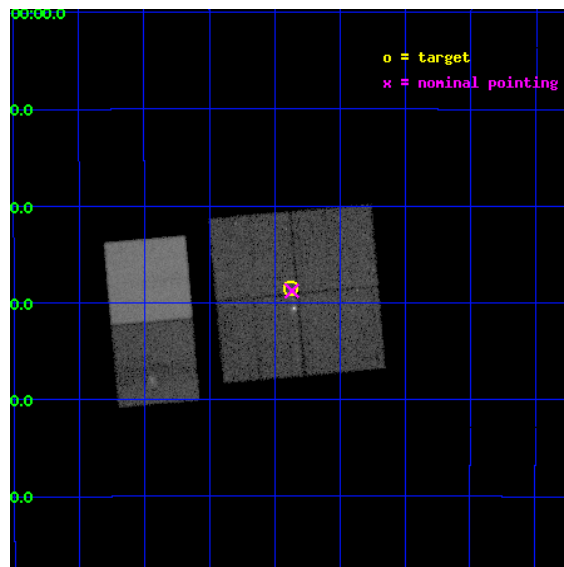
L2 Processing Date : Oct 9 2012

Contents

1	Front	2
2	OBI	3
2.1	OBI	3
2.1.1	Images	3
2.1.2	Bias	3
2.1.3	Parameters	4
2.1.4	Events	4
2.2	Compared Parameters	5
2.3	Aspect	6
2.4	Star Slots	9
2.4.1	Slot 3	9
2.4.2	Slot 4	10
2.4.3	Slot 5	11
2.4.4	Slot 6	12
2.4.5	Slot 7	13
2.5	FID Slots	14
2.5.1	Slot 0	14
2.5.2	Slot 1	15
2.5.3	Slot 2	16
A	Summary	17
A.1	Status	17
A.2	Comments	17

1 Front

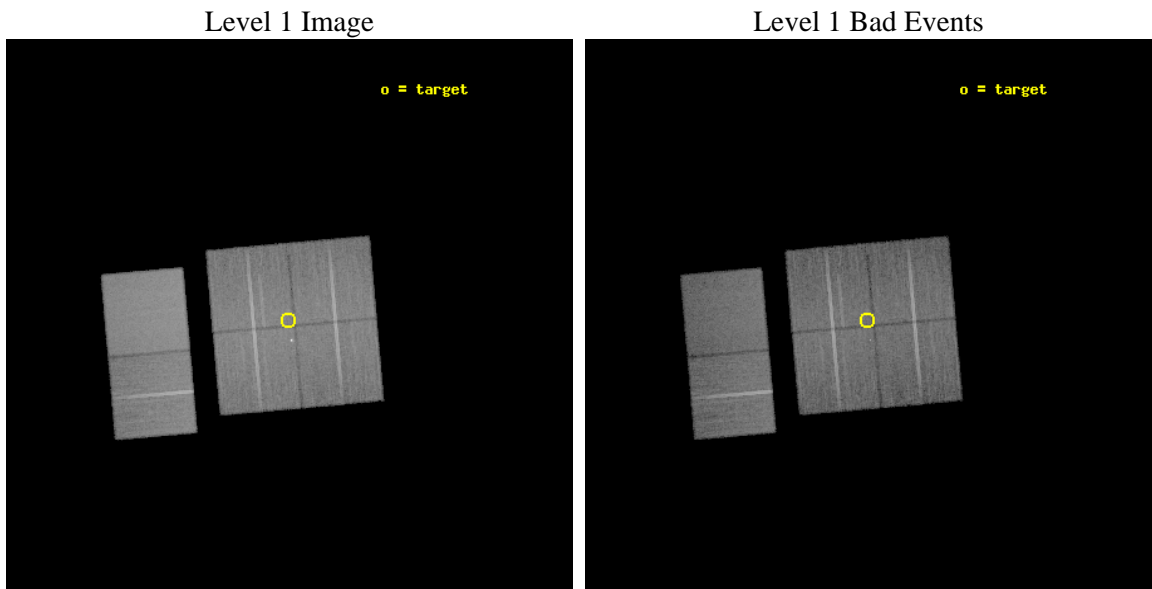
seq_num	200189	Sequence number
obs_id	2581	Observation id
title	X-RAY INDUCED CHEMISTRY IN PROTOSTARS	Proposal title
observer	Dr. Thierry Montmerle	Principal investigator
object	IRAS16293	Source name
dtycycle	0	
cycle	P	events from which exps? Prim/Second/Both
ra_targ	248.094583	Observer's specified target RA [deg]
dec_targ	-24.475556	Observer's specified target Dec [deg]
ra_nom	248.09217349252	Nominal RA [deg]
dec_nom	-24.479686003864	Nominal Dec [deg]
roll_nom	264.94286225395	Nominal Roll [deg]
revision	3	Processing version of data
ontime	30131.199887753	Sum of GTIs [s]
livetime	29749.660491943	Livetime [s]
ontime0	30131.199887753	Sum of GTIs [s]
ontime1	30124.717927307	Sum of GTIs [s]
ontime2	30127.958917469	Sum of GTIs [s]
ontime3	30131.199887753	Sum of GTIs [s]
ontime6	30131.199887753	Sum of GTIs [s]
ontime7	30131.199887753	Sum of GTIs [s]
l2events	196900	Number of level 2 events



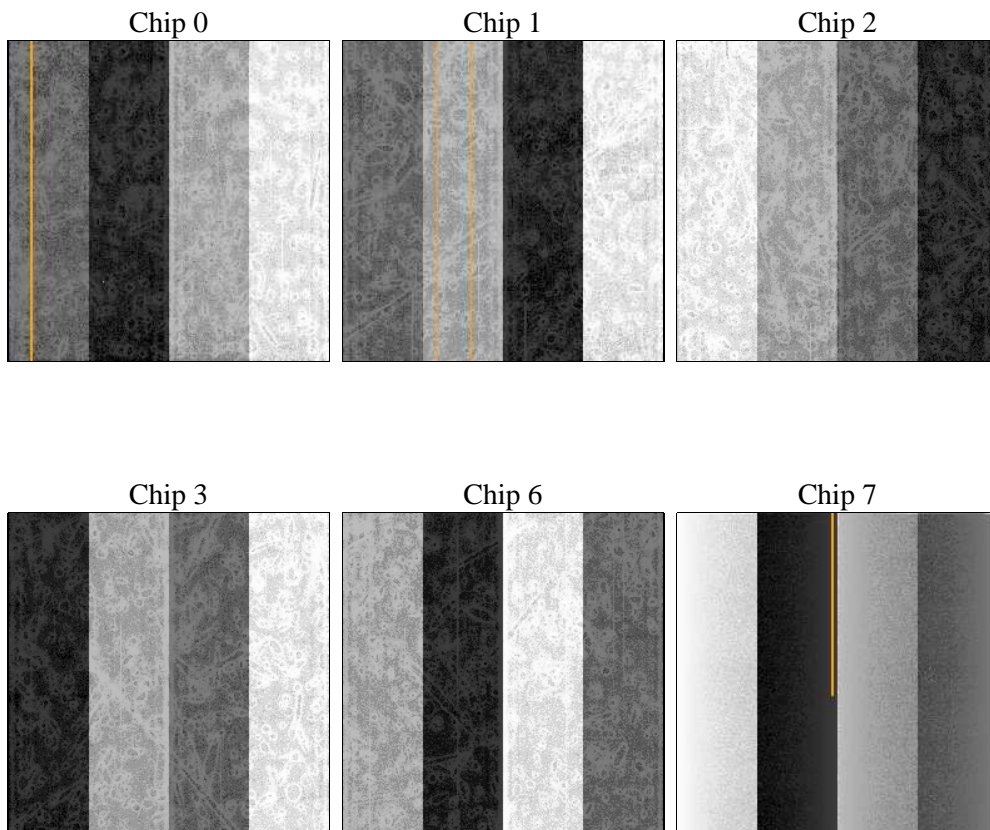
2 OBI

2.1 OBI

2.1.1 Images



2.1.2 Bias



2.1.3 Parameters

obi_num	0	Obi number	sched_exp_time	30000.000000	[s] Scheduled observation exposure time
ascdsver	8.4.5	Processing system revision	ontime	30131.199887753	Sum of GTIs [s]
caldbver	4.5.2	 	ontime0	30131.199887753	Sum of GTIs [s]
date	2012-10-09T04:39:42	Date and time of file creation	ontime1	30124.717927307	Sum of GTIs [s]
revision	3	Processing version of data	ontime2	30127.958917469	Sum of GTIs [s]
			ontime3	30131.199887753	Sum of GTIs [s]
			ontime6	30131.199887753	Sum of GTIs [s]
			ontime7	30131.199887753	Sum of GTIs [s]
			l1events	1193699	Number of level 1 events

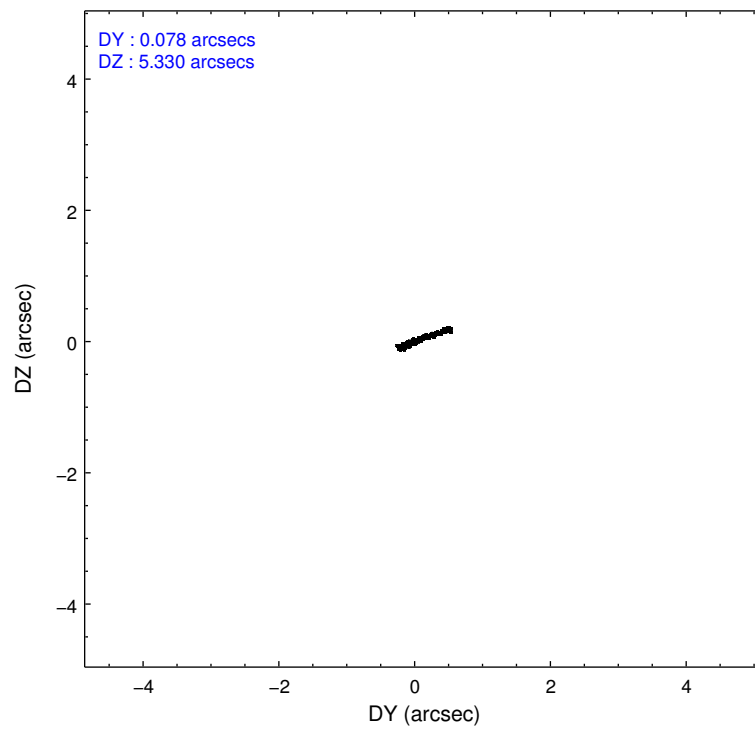
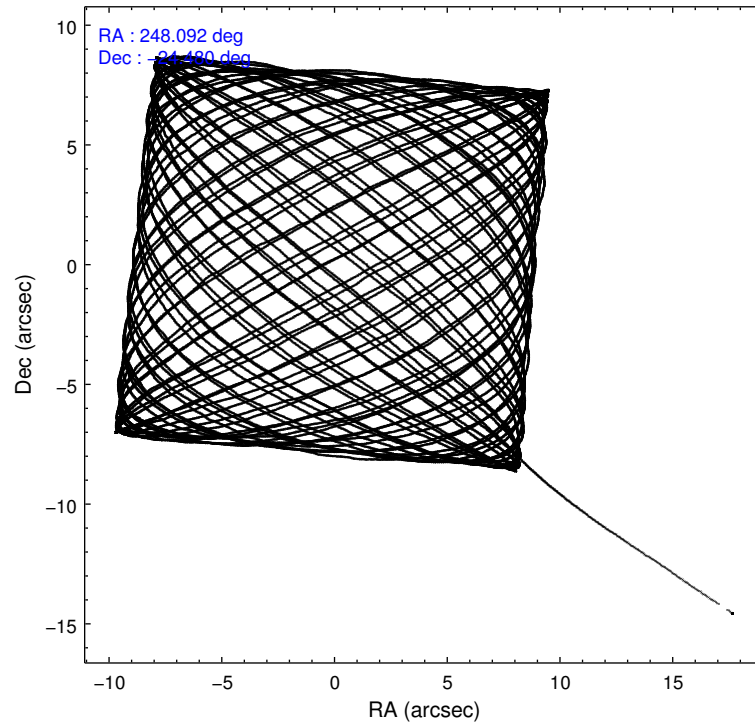
2.1.4 Events

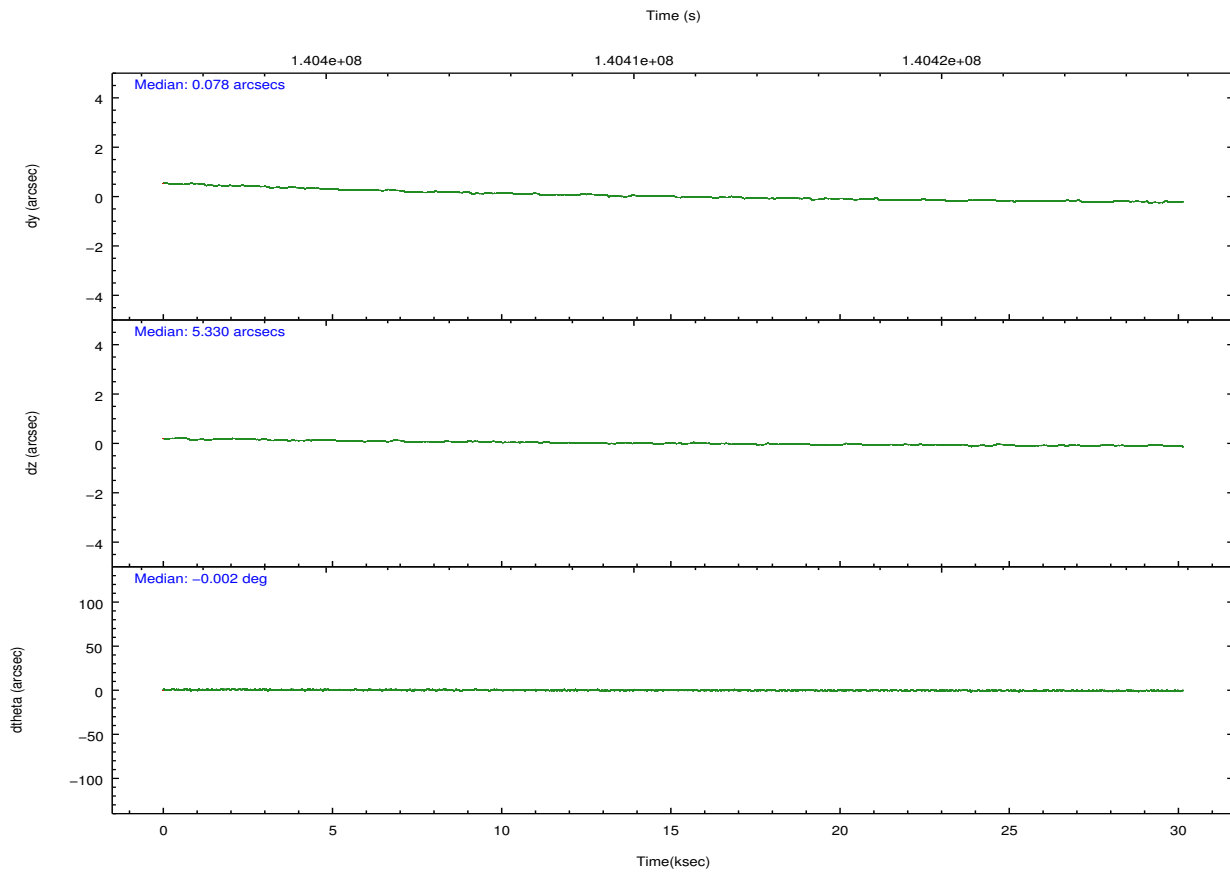
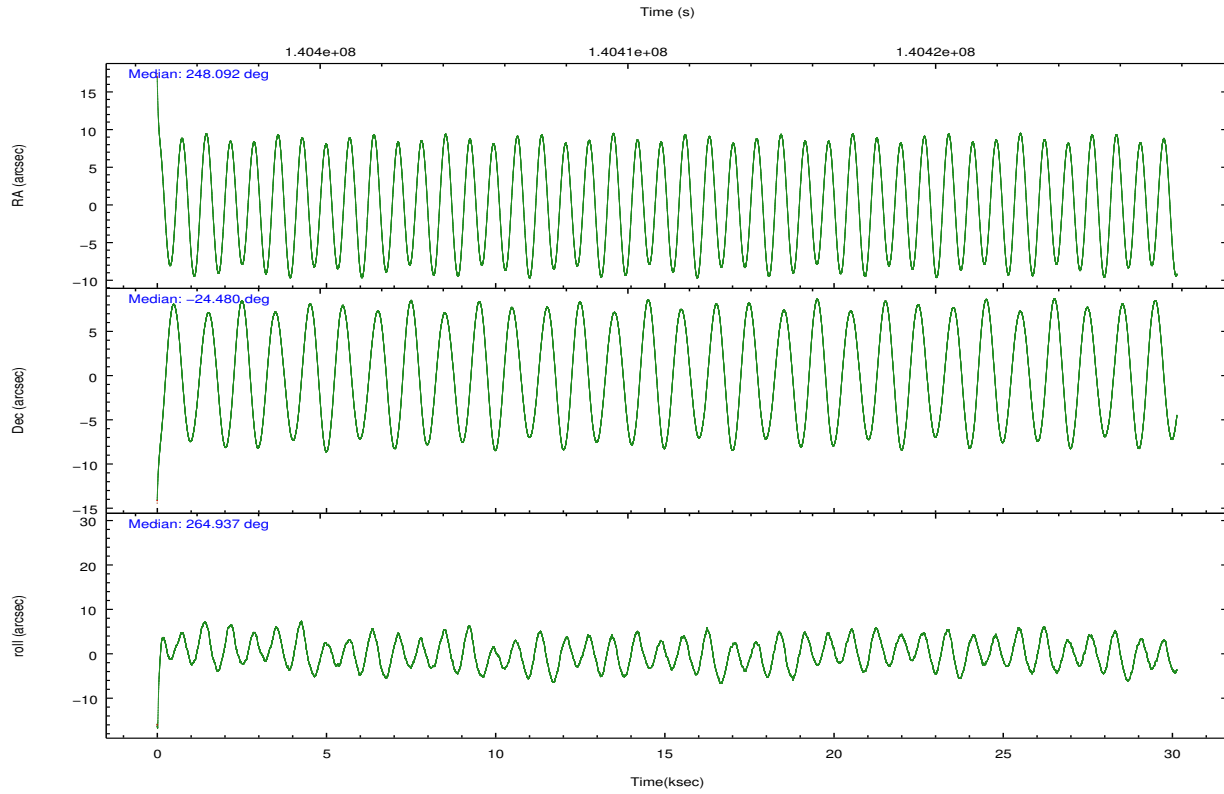
	ccd 0	ccd 1	ccd 2	ccd 3	ccd 6	ccd 7		ccd 0	ccd 1	ccd 2	ccd 3	ccd 6	ccd 7
level 1 events	175922	180225	198998	186297	198909	253348	grade 0 events	9262	9285	12067	8988	8682	8813
rejected events	153961	156987	173497	164941	176990	152536		5%	5%	6%	4%	4%	3%
rejected %	87%	87%	87%	88%	88%	60%	grade 1 events	97	86	268	111	95	261
								0%	0%	0%	0%	0%	0%
							grade 2 events	4885	4956	5332	4480	4741	20166
								2%	2%	2%	2%	2%	7%
							grade 3 events	2190	2510	2220	2103	2152	9361
								1%	1%	1%	1%	1%	3%
							grade 4 events	2016	2410	2273	2112	2162	9033
								1%	1%	1%	1%	1%	3%
							grade 5 events	7174	7953	6949	7685	8809	24497
								4%	4%	3%	4%	4%	9%
							grade 6 events	4056	4505	4005	4090	4589	55706
								2%	2%	2%	2%	2%	21%
							grade 7 events	146242	148520	165884	156728	167679	125511
								83%	82%	83%	84%	84%	49%

2.2 Compared Parameters

Parameter	Planned	Actual	Parameter	Planned	Actual
Instrument	ACIS	ACIS	Obspar format version number	7	7
Detector	ACIS-012367	ACIS-012367	Obspar file type	PREDICTED	ACTUAL
Grating	NONE	NONE	Obspar update status	NONE	UPDATED
Data mode	FAINT	FAINT	Number of optional ACIS chips dropped	0	0
Observation mode	POINTING	POINTING	On-chip summing requested	N	N
[deg] Pointing RA	248.079399	248.0921734925246	Subarray requested	NONE	NONE
[deg] Pointing Dec	-24.454870	-24.47968600386399	Alternating exposures requested	N	N
[deg] Pointing Roll	264.728890	264.9428622539529	[s] Primary exposure time	0.000000	3.2
[mm] SIM focus pos	-0.782348	-0.7809083437167272			
[mm] SIM defocus	0	0.001439871863259334			
[mm] SIM translation stage pos	-233.592463	-233.5874344608287			
[mm] SIM translation stage offset	0	-0.005018542100998502			
[s] Observation start time (MET)	140396341.184000	140394970.02361			
Observation start date	2002-06-13T22:57:57	2002-06-13T22:36:10			
[s] Observation end time (MET)	140426341.184000	140427312.36243			
Observation end date	2002-06-14T07:17:57	2002-06-14T07:35:12			
Read mode	TIMED	TIMED			

2.3 Aspect



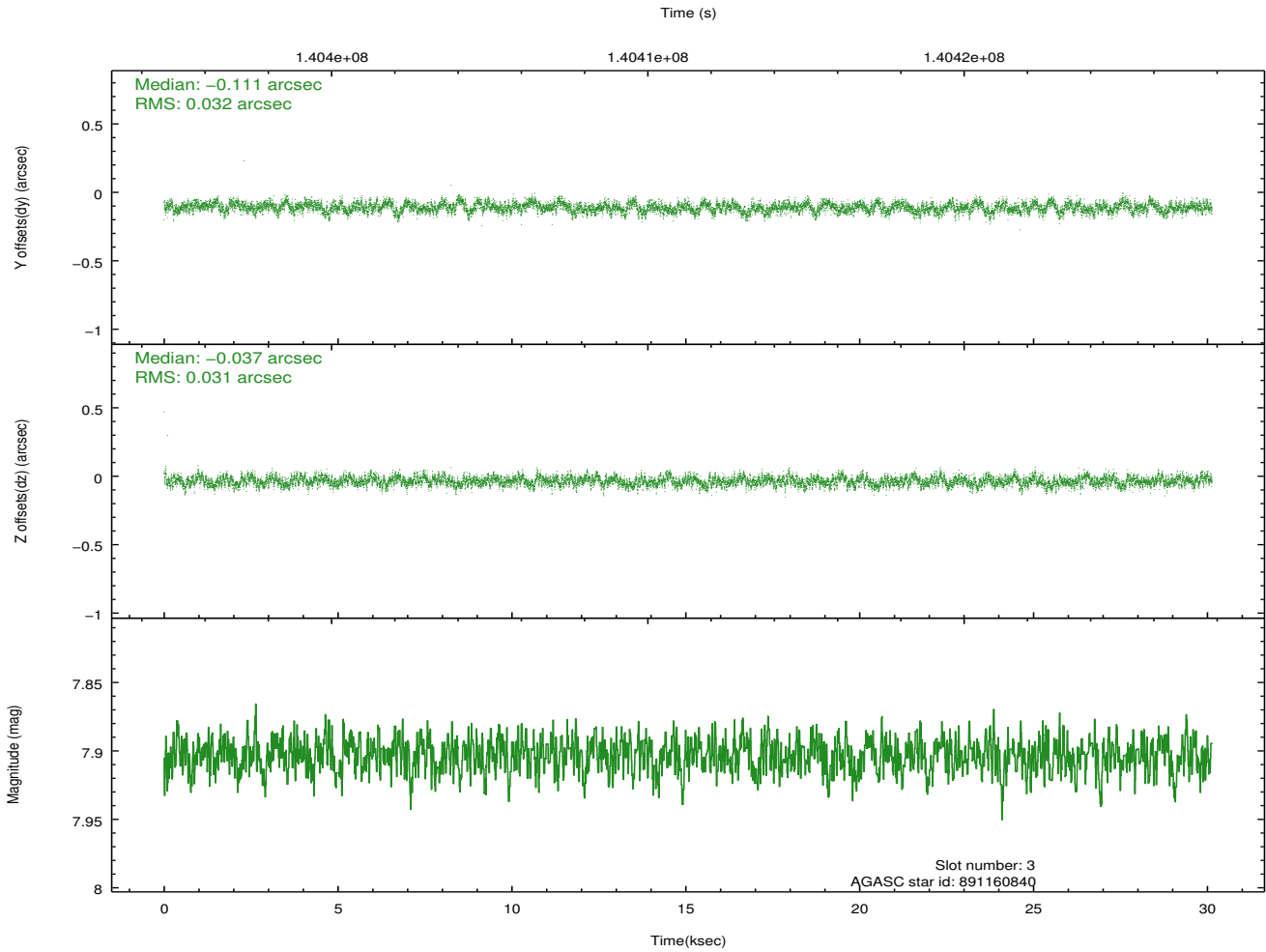
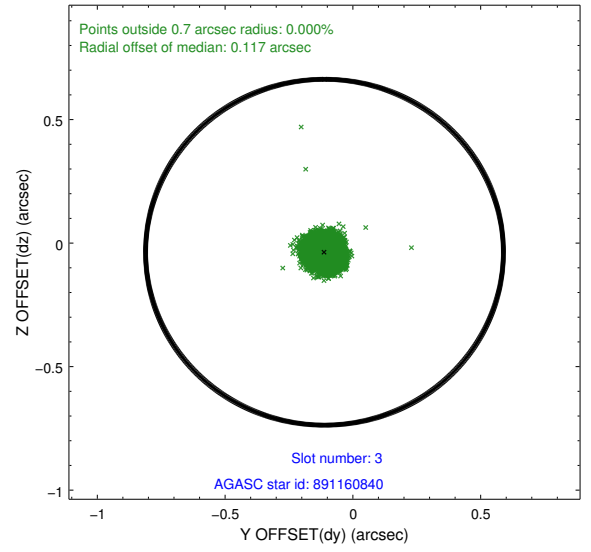
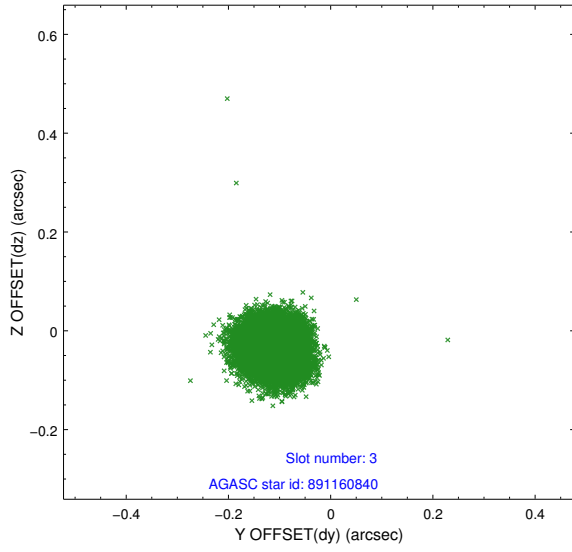


Slot Statistics

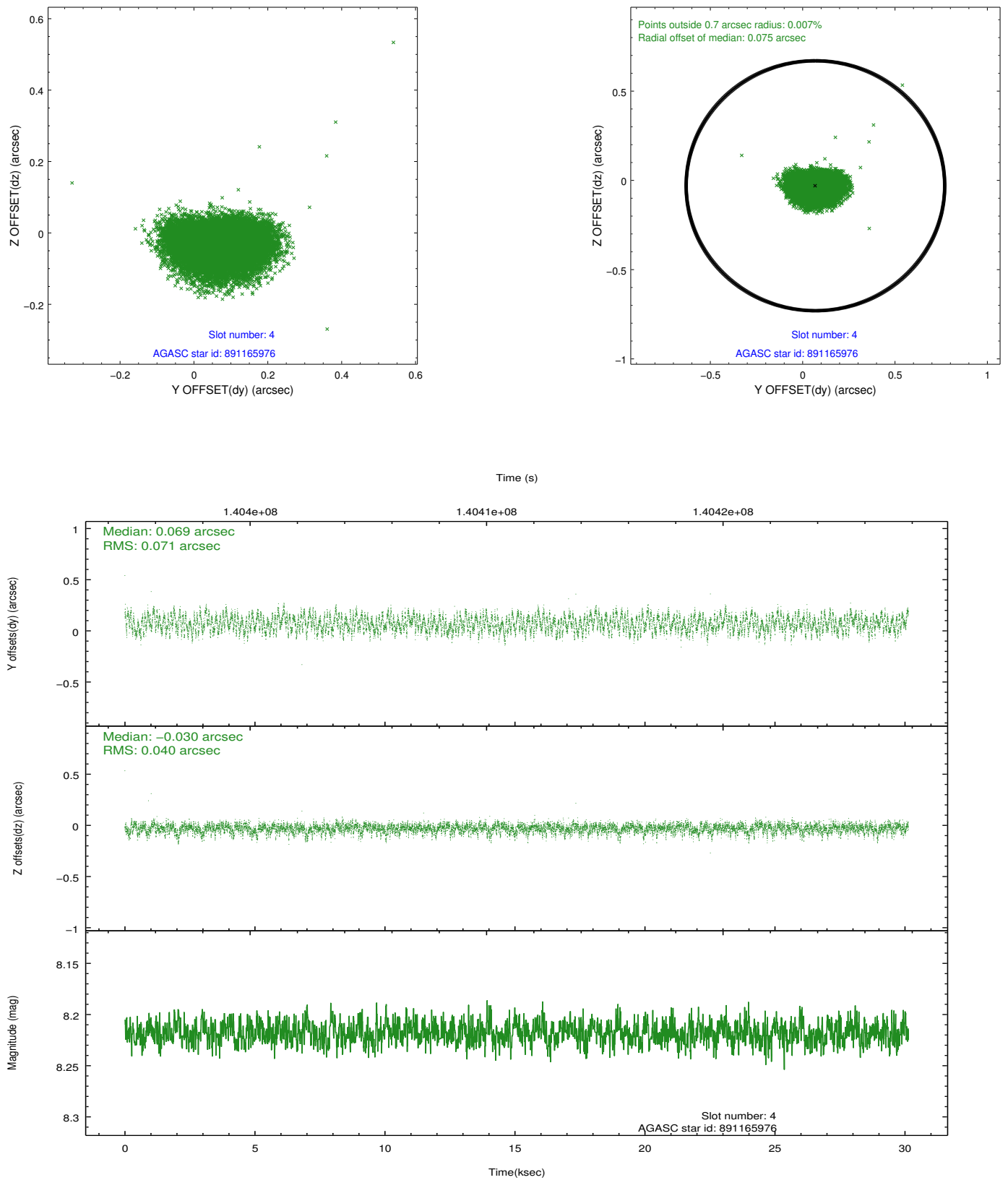
slot	status	id	mag	n_pts	med_dy	med_dz	dr1	dr2	ra	dec	mean_y	mean_z
0	FID	ACIS-I-1	7.25	7348	-0.013	0.021	0.008	0.014	0.000000	0.000000	939.73	-828.67
1	FID	ACIS-I-5	7.23	7349	-0.103	0.022	0.007	0.012	0.000000	0.000000	-1808.42	1068.78
2	FID	ACIS-I-6	7.26	7351	0.025	0.028	0.009	0.014	0.000000	0.000000	405.24	1713.37
3	GUIDE	891160840	7.90	14698	-0.111	-0.037	0.048	0.077	248.551631	-25.001114	1819.64	1715.83
4	GUIDE	891165976	8.22	14699	0.069	-0.030	0.088	0.137	247.477470	-24.979460	2066.27	-1781.33
5	GUIDE	890638488	8.63	14699	-0.031	0.040	0.063	0.101	248.462653	-24.290552	-702.26	1198.34
6	GUIDE	891163512	9.52	14685	0.052	-0.064	0.098	0.158	248.270486	-25.128617	2358.85	843.96
7	GUIDE	891161000	9.57	14688	0.017	0.093	0.098	0.160	247.919483	-24.421185	-71.48	-532.40

2.4 Star Slots

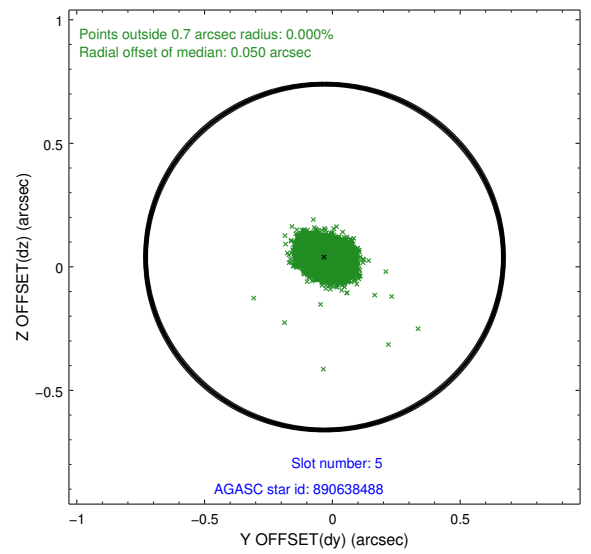
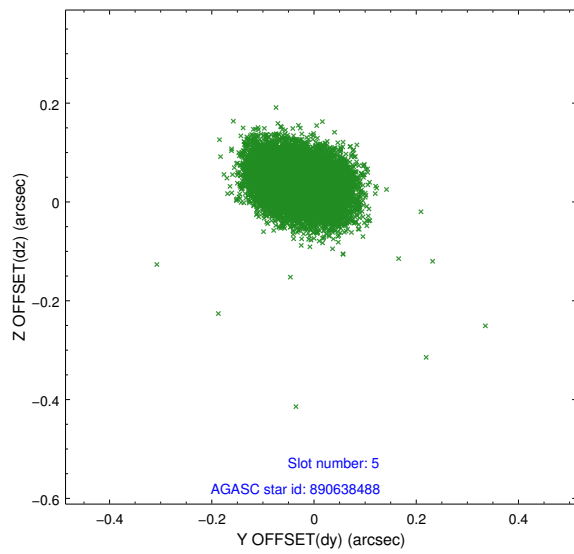
2.4.1 Slot 3



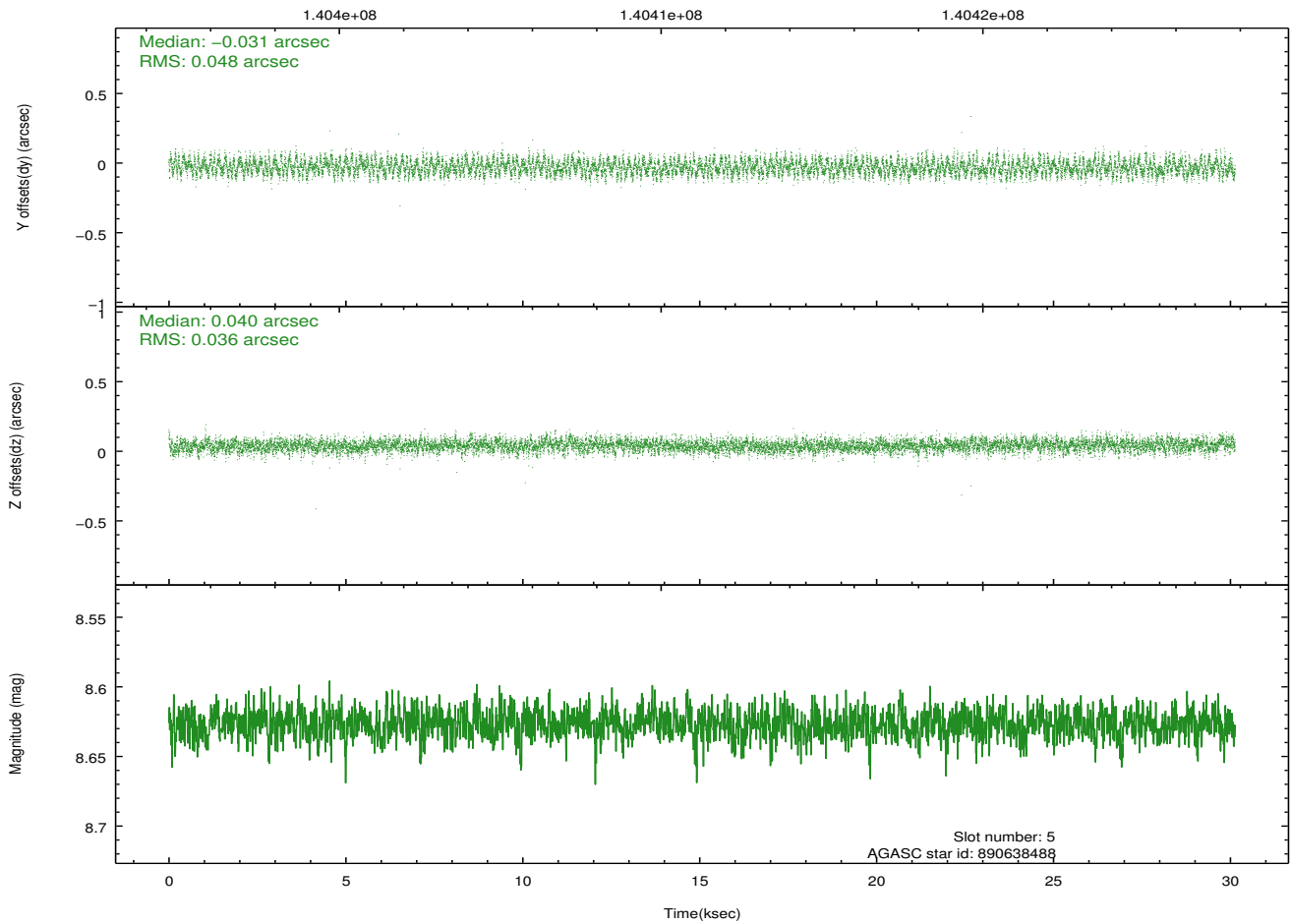
2.4.2 Slot 4



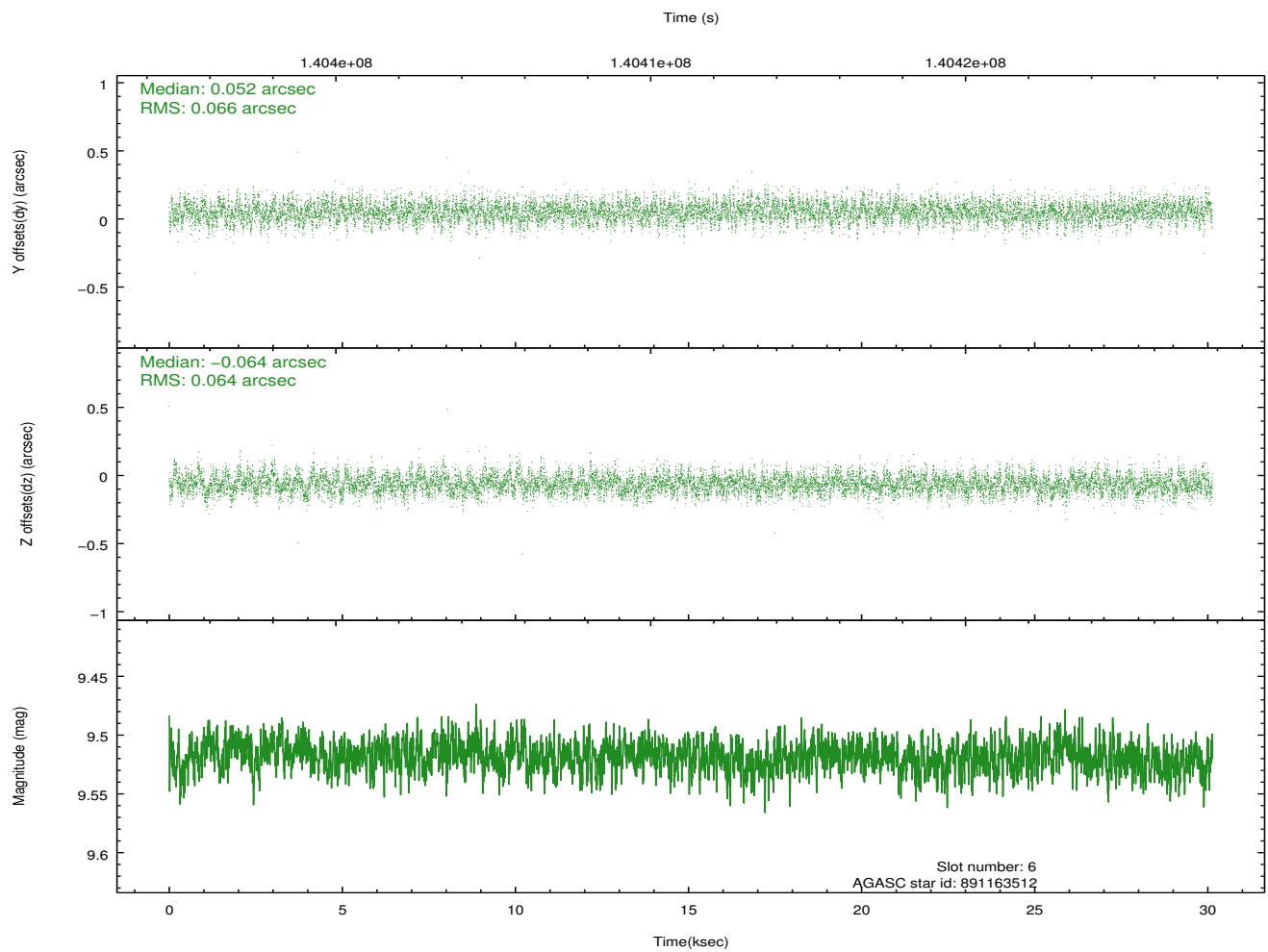
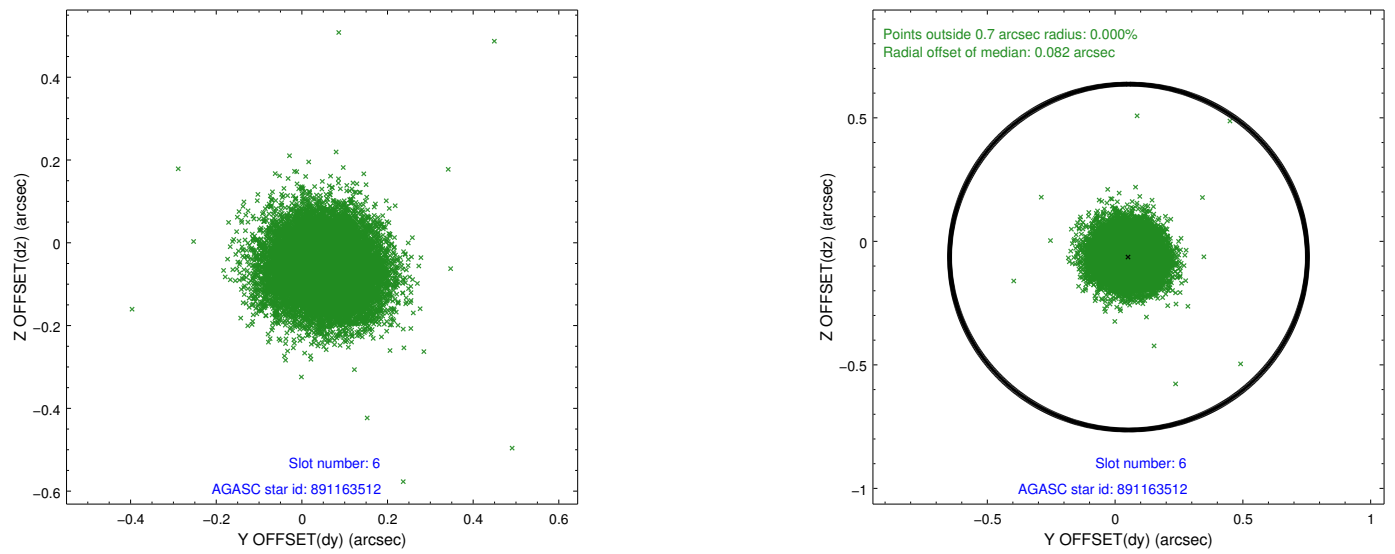
2.4.3 Slot 5



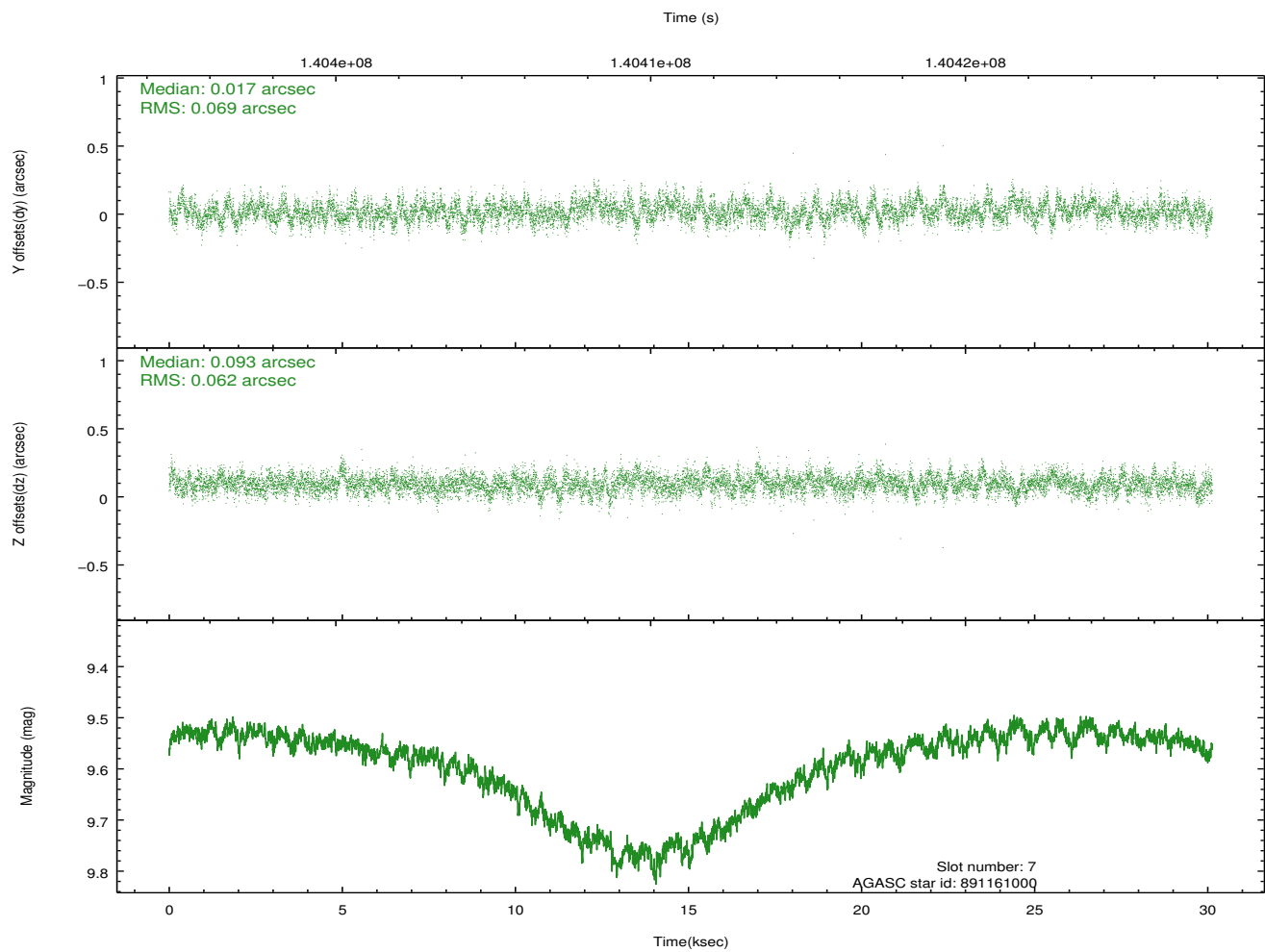
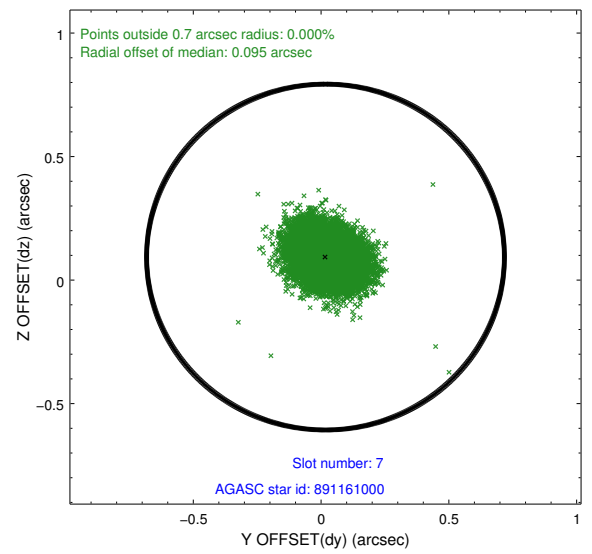
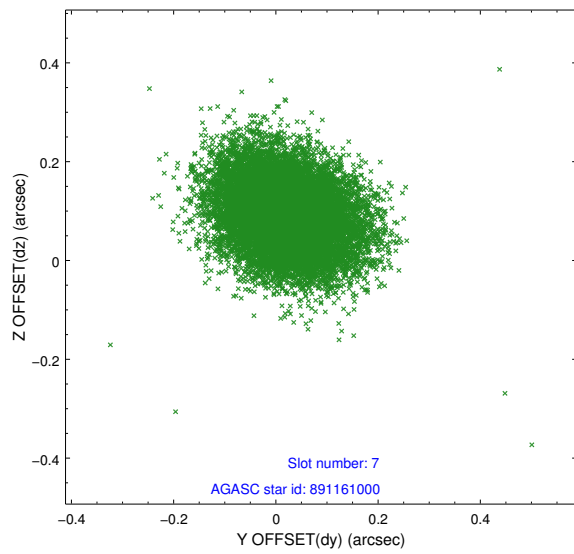
Time (s)



2.4.4 Slot 6

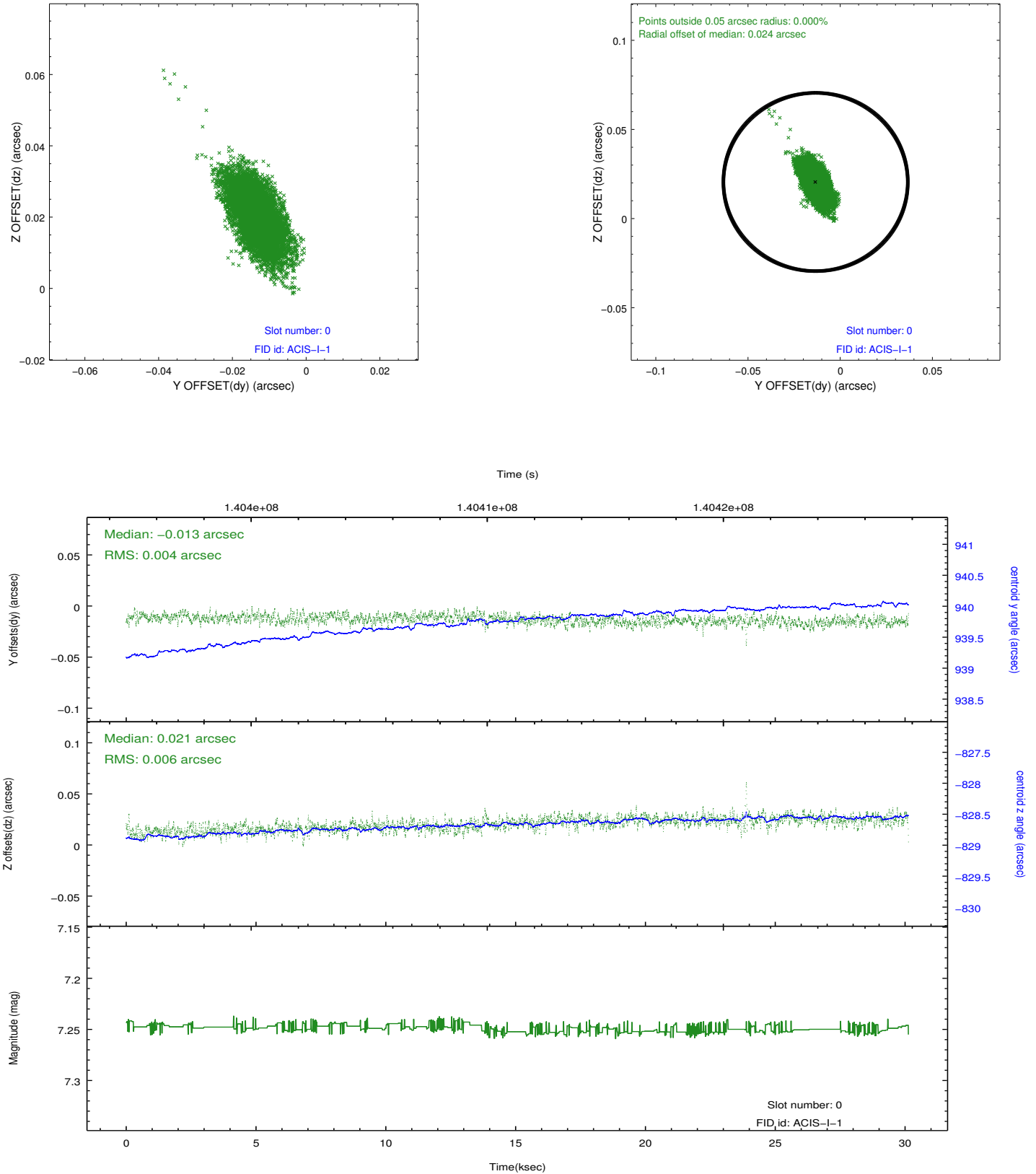


2.4.5 Slot 7

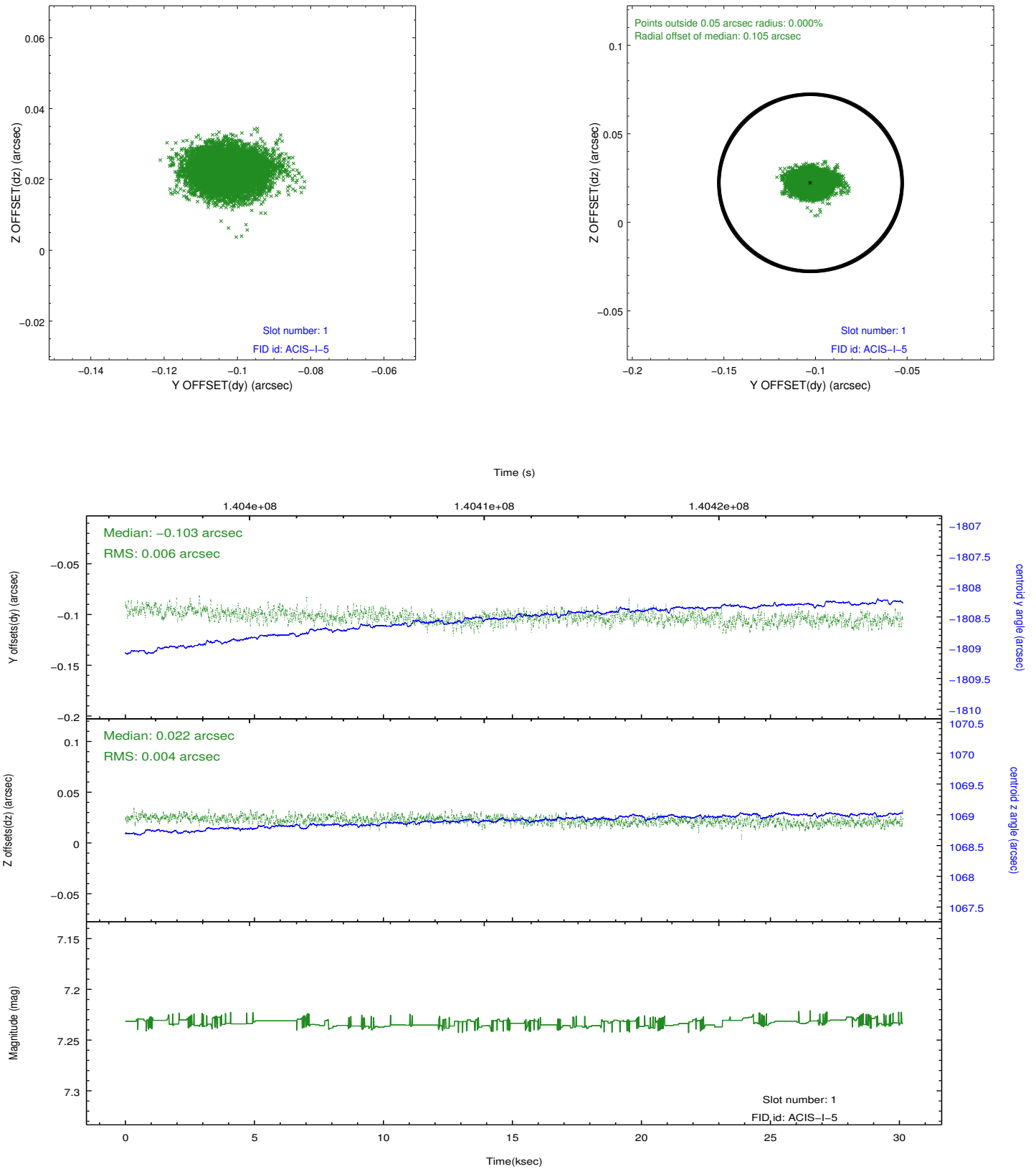


2.5 FID Slots

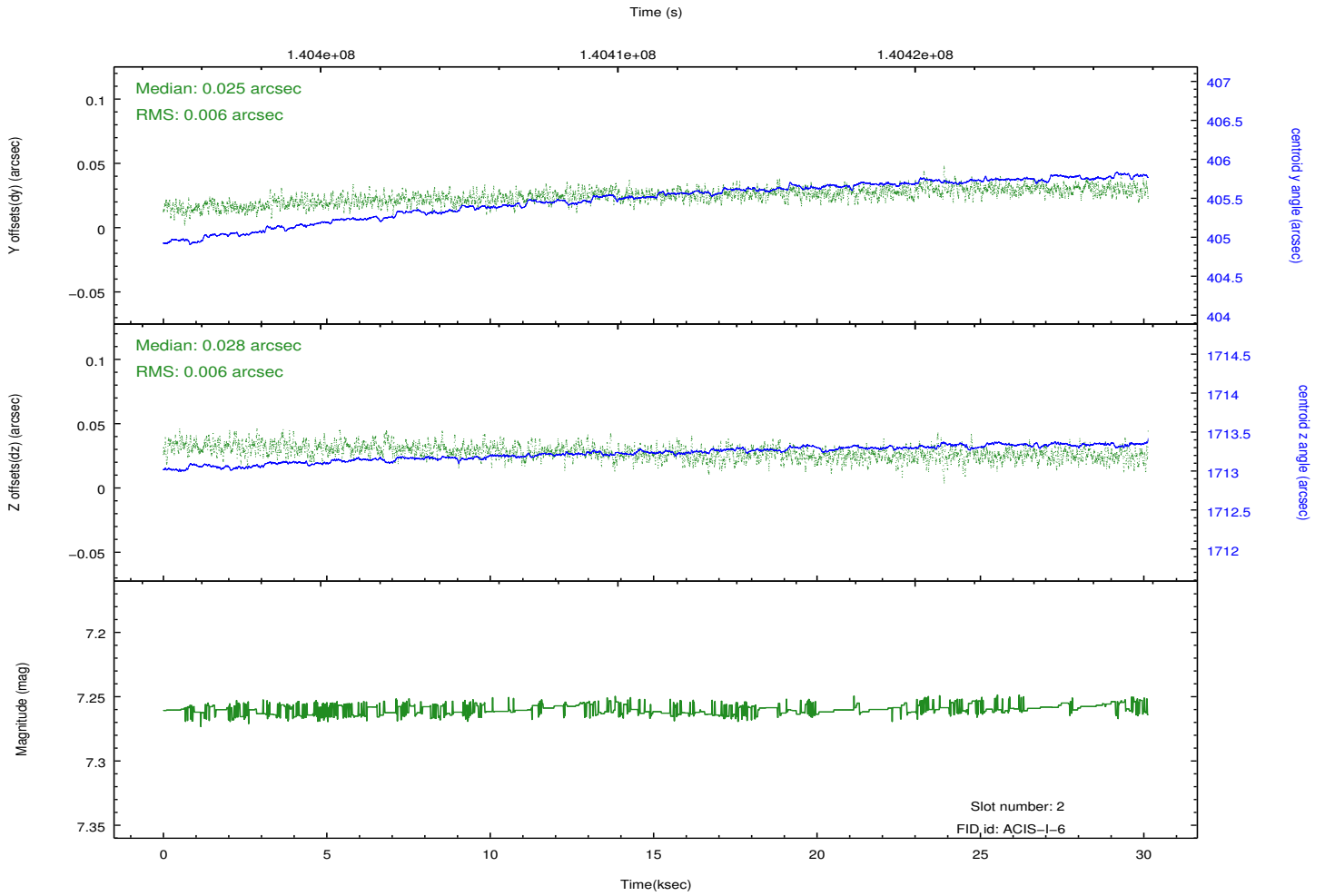
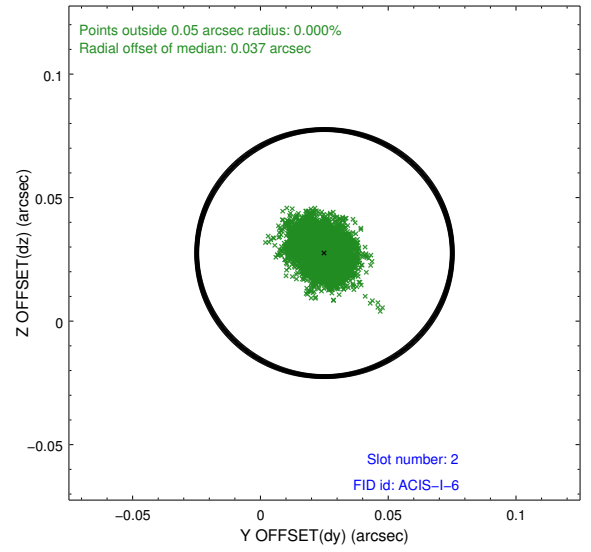
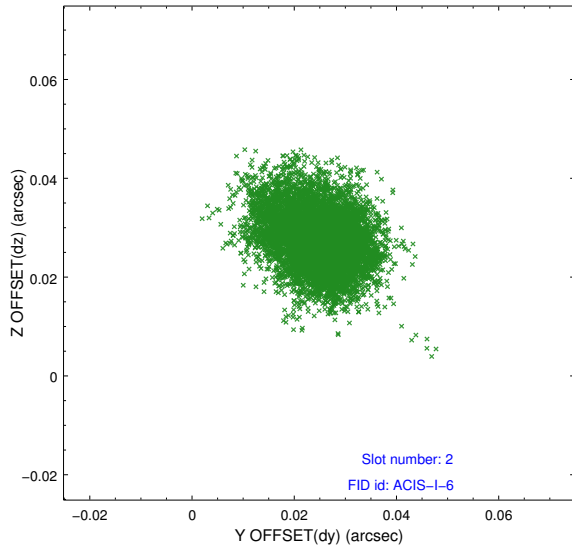
2.5.1 Slot 0



2.5.2 Slot 1



2.5.3 Slot 2



A Summary

A.1 Status

V&V Scientist	Beth Sundheim
V&V Date (YYYY-MM-DD)	2012.10.18
V&V Edition	1
V&V Disposition and Status	OK
V&V Charge Time	30.131

A.2 Comments