

V&V Reference Report

L2 ASCDS Version : 8.4.5

Observation 3191 - L2 Version 3
Chandra X-Ray Center

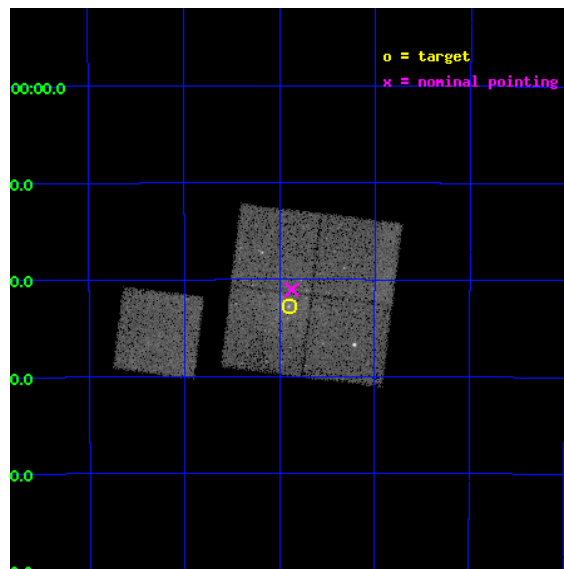
L2 Processing Date : Oct 17 2012

Contents

1	Front	2
2	OBI	3
2.1	OBI	3
2.1.1	Images	3
2.1.2	Bias	3
2.1.3	Parameters	4
2.1.4	Events	4
2.2	Compared Parameters	5
2.3	Aspect	6
2.4	Star Slots	9
2.4.1	Slot 3	9
2.4.2	Slot 4	10
2.4.3	Slot 5	11
2.4.4	Slot 6	12
2.4.5	Slot 7	13
2.5	FID Slots	14
2.5.1	Slot 0	14
2.5.2	Slot 1	15
2.5.3	Slot 2	16
A	Summary	17
A.1	Status	17
A.2	Comments	17

1 Front

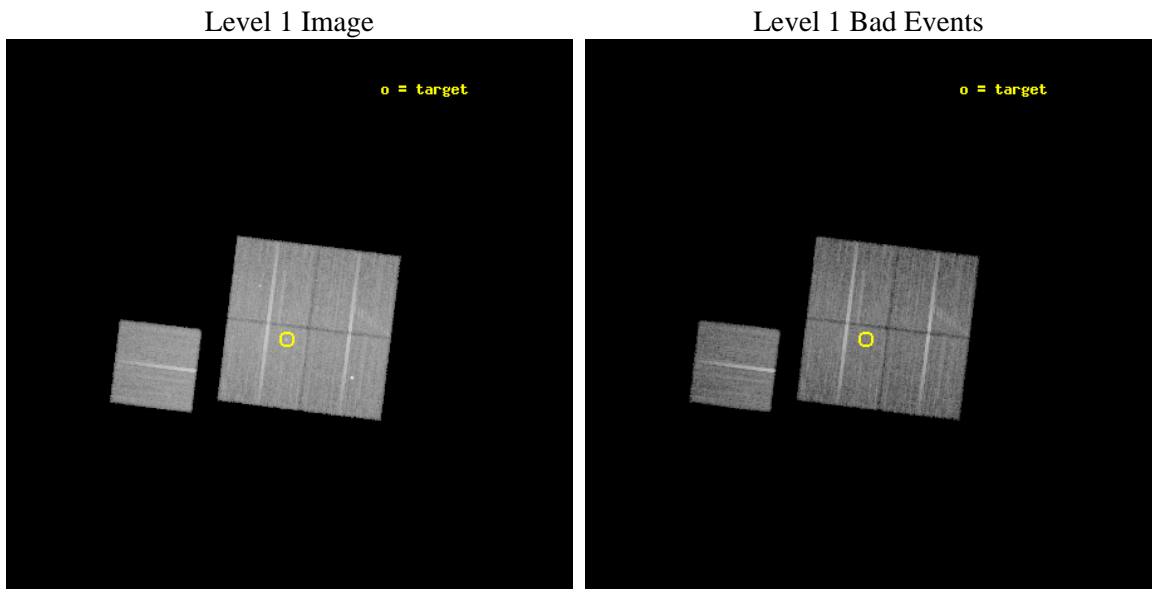
seq_num	800191	Sequence number
obs_id	3191	Observation id
title	COLLIDING GROUPS	Proposal title
observer	Dr. Stephen Murray	Principal investigator
object	NGC6868	Source name
dtcycle	0	
cycle	P	events from which exps? Prim/Second/Both
ra_targ	302.475417	Observer's specified target RA [deg]
dec_targ	-48.379722	Observer's specified target Dec [deg]
ra_nom	302.46751884697	Nominal RA [deg]
dec_nom	-48.351109116269	Nominal Dec [deg]
roll_nom	277.0331083171	Nominal Roll [deg]
revision	3	Processing version of data
ontime	23770.758974046	Sum of GTIs [s]
livetime	23460.176508271	Livetime [s]
ontime0	23773.857601404	Sum of GTIs [s]
ontime1	23767.616710871	Sum of GTIs [s]
ontime2	23770.758974046	Sum of GTIs [s]
ontime3	23773.899954259	Sum of GTIs [s]
ontime6	23764.393660694	Sum of GTIs [s]
l2events	69165	Number of level 2 events



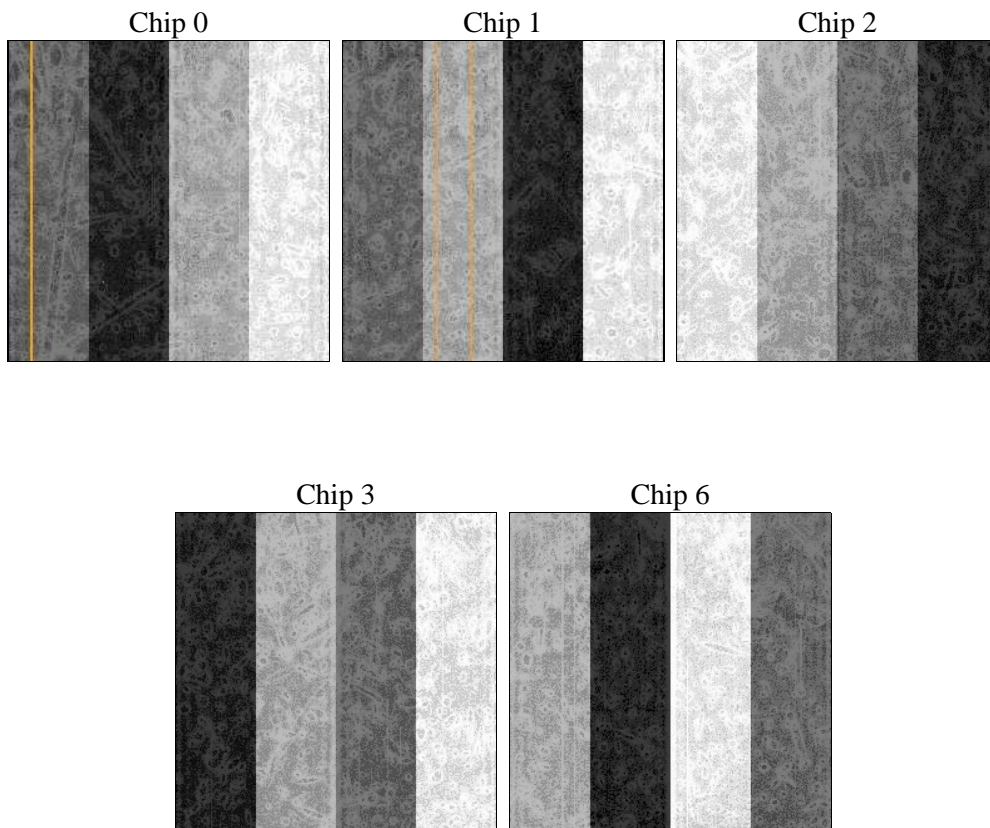
2 OBI

2.1 OBI

2.1.1 Images



2.1.2 Bias



2.1.3 Parameters

obi_num	1	Obi number	sched_exp_time	24000.000000	[s] Scheduled observation exposure time
ascdsver	8.4.5	Processing system revision	ontime	23770.758974046	Sum of GTIs [s]
caldbver	4.5.2	 	ontime0	23773.857601404	Sum of GTIs [s]
date	2012-10-17T00:26:10	Date and time of file creation	ontime1	23767.616710871	Sum of GTIs [s]
revision	3	Processing version of data	ontime2	23770.758974046	Sum of GTIs [s]
			ontime3	23773.899954259	Sum of GTIs [s]
			ontime6	23764.393660694	Sum of GTIs [s]
			l1events	660235	Number of level 1 events

2.1.4 Events

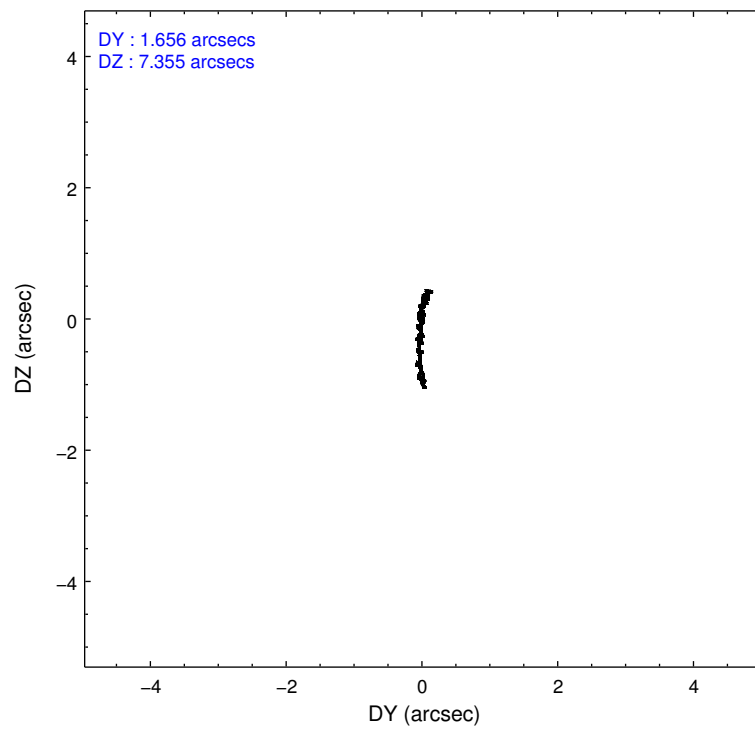
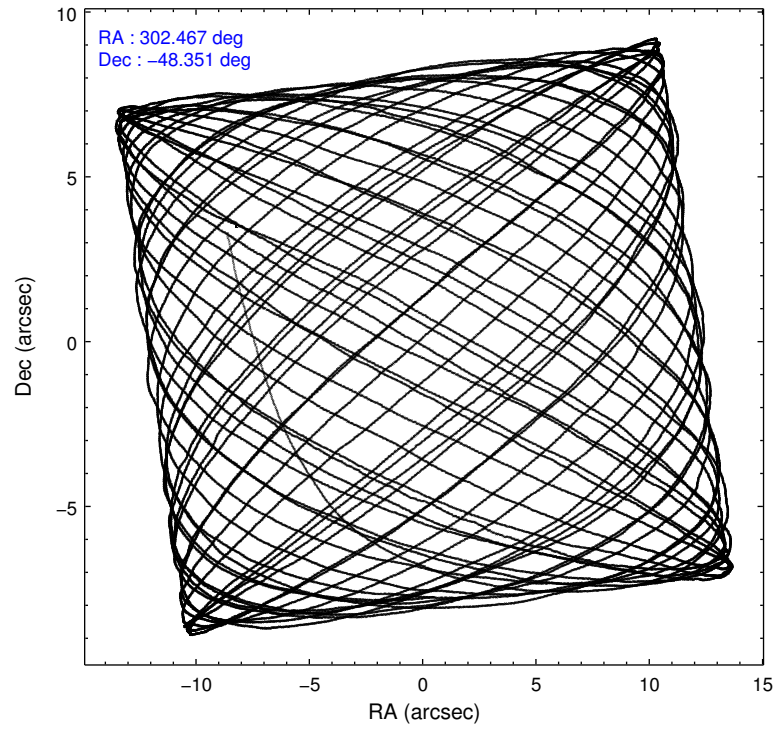
	ccd 0	ccd 1	ccd 2	ccd 3	ccd 6
level 1 events	126585	124514	142858	134323	131955
rejected events	109127	108215	124744	119523	116757
rejected %	86%	86%	87%	88%	88%

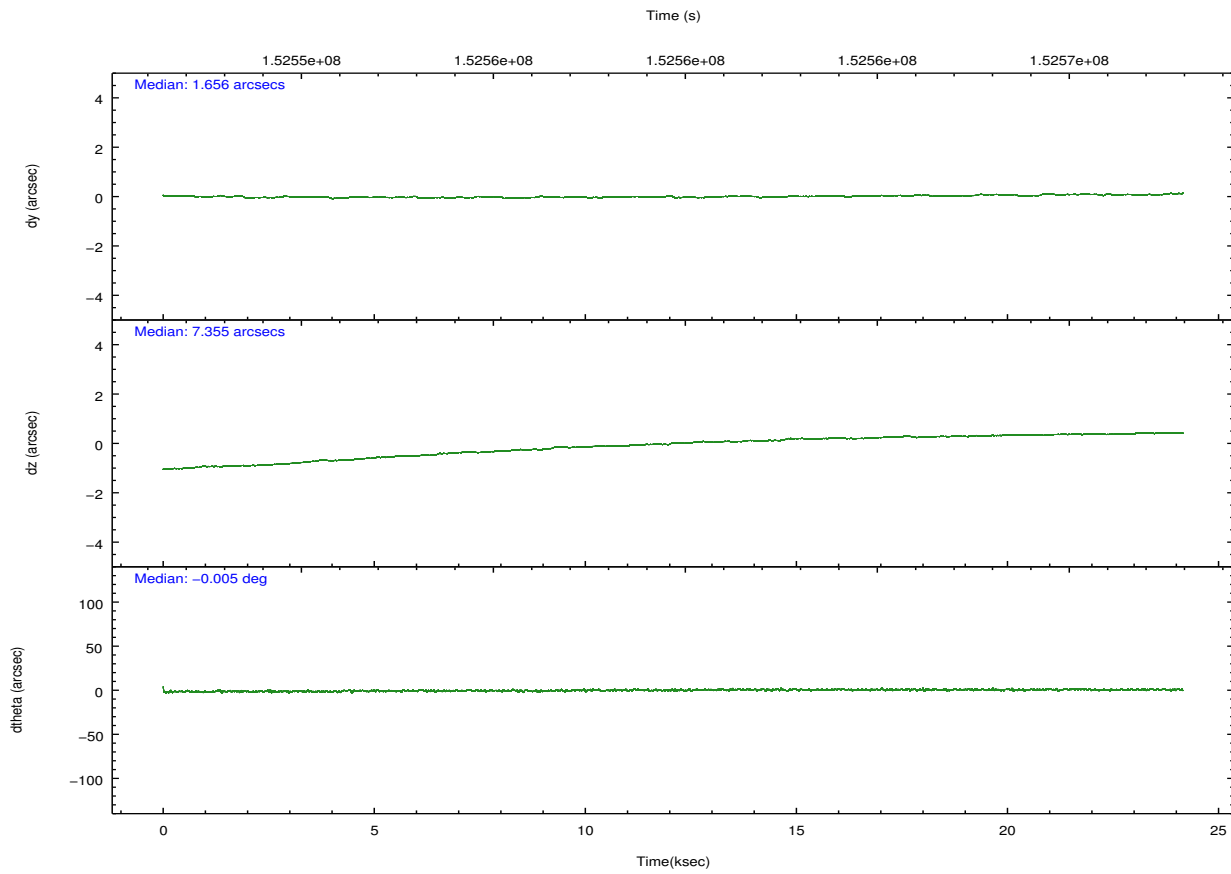
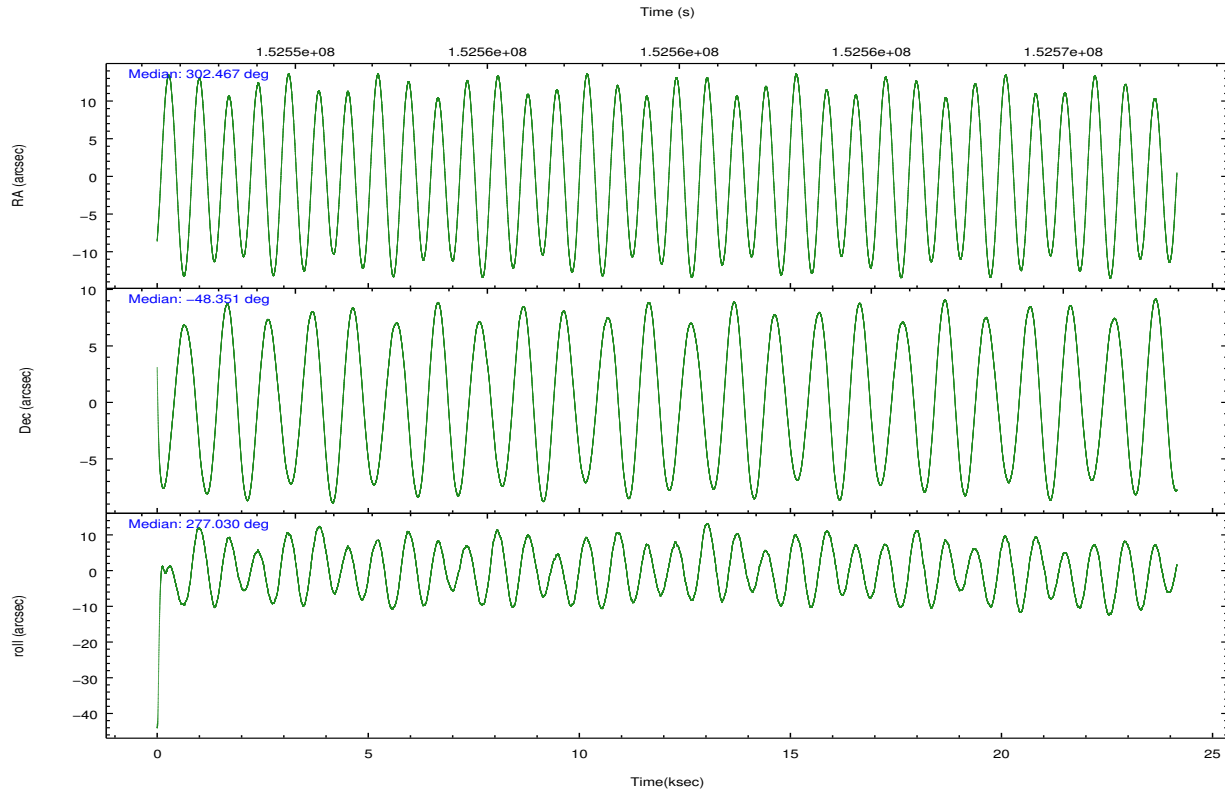
	ccd 0	ccd 1	ccd 2	ccd 3	ccd 6
grade 0 events	8538	6763	9281	6655	6280
	6%	5%	6%	4%	4%
grade 1 events	71	58	69	76	49
	0%	0%	0%	0%	0%
grade 2 events	3210	3197	3411	2737	2952
	2%	2%	2%	2%	2%
grade 3 events	1555	1767	1480	1463	1531
	1%	1%	1%	1%	1%
grade 4 events	1502	1689	1559	1547	1591
	1%	1%	1%	1%	1%
grade 5 events	4325	4573	4134	4812	4874
	3%	3%	2%	3%	3%
grade 6 events	2655	2885	2386	2403	2846
	2%	2%	1%	1%	2%
grade 7 events	104729	103582	120538	114630	111832
	82%	83%	84%	85%	84%

2.2 Compared Parameters

Parameter	Planned	Actual	Parameter	Planned	Actual
Instrument	ACIS	ACIS	Obspar format version number	7	7
Detector	ACIS-01236	ACIS-01236	Obspar file type	PREDICTED	ACTUAL
Grating	NONE	NONE	Obspar update status	NONE	UPDATED
Data mode	VFAINT	VFAINT	Number of optional ACIS chips dropped	0	0
Observation mode	POINTING	POINTING	On-chip summing requested	N	N
[deg] Pointing RA	302.442604	302.4675188469655	Subarray requested	NONE	NONE
[deg] Pointing Dec	-48.329294	-48.35110911626875	Alternating exposures requested	N	N
[deg] Pointing Roll	276.805828	277.033108317102	[s] Primary exposure time	0.000000	3.1
[mm] SIM focus pos	-0.782348	-0.7809083437167272			
[mm] SIM defocus	0	0.001439871863259334			
[mm] SIM translation stage pos	-229.092463	-229.0842957557347			
[mm] SIM translation stage offset	-4.5	-4.508157247194958			
[s] Observation start time (MET)	152547757.184000	152546628.93722			
Observation start date	2002-11-01T14:21:33	2002-11-01T14:03:48			
[s] Observation end time (MET)	152571757.184000	152572521.4633			
Observation end date	2002-11-01T21:01:33	2002-11-01T21:15:21			
Read mode	TIMED	TIMED			

2.3 Aspect





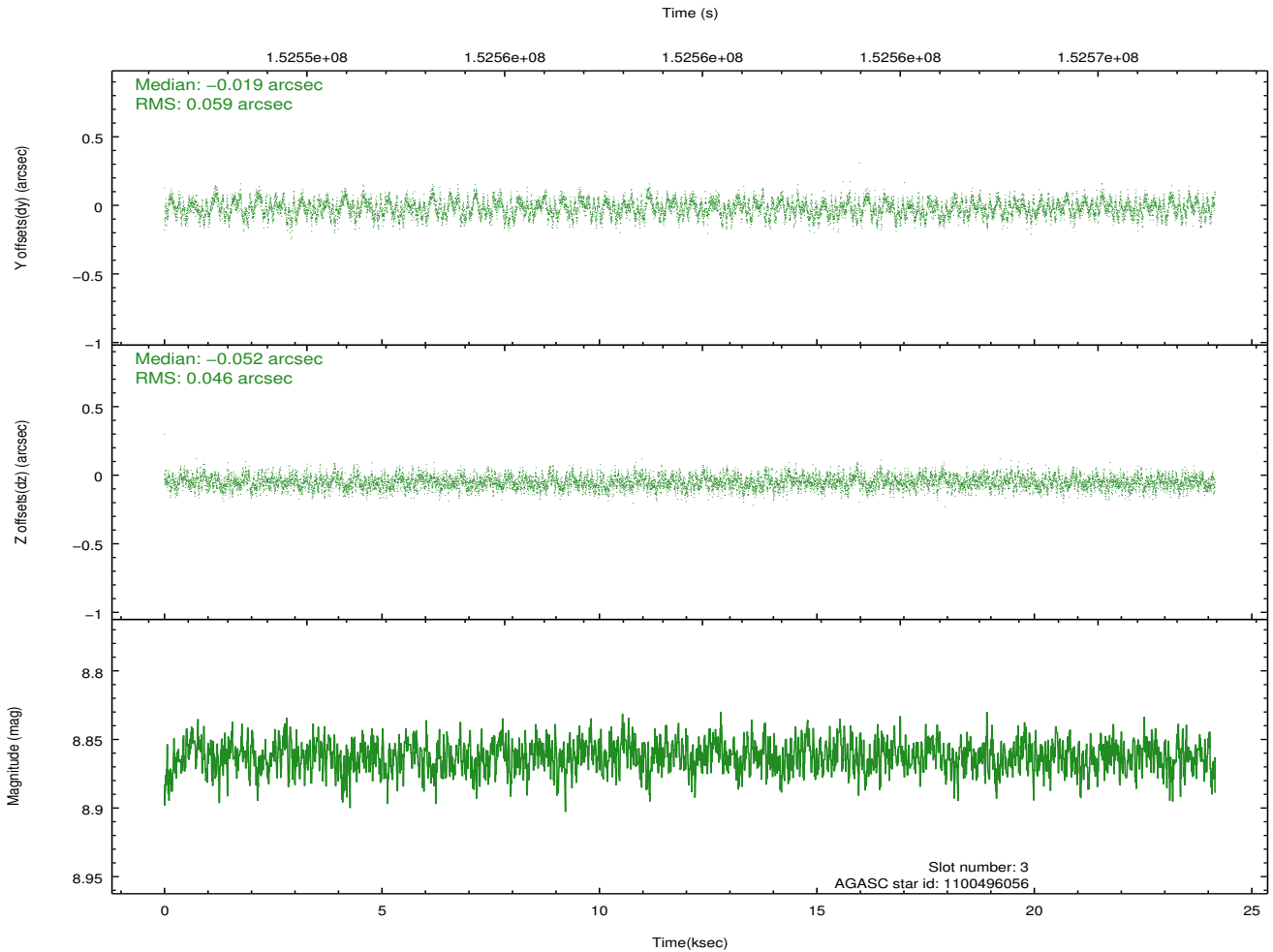
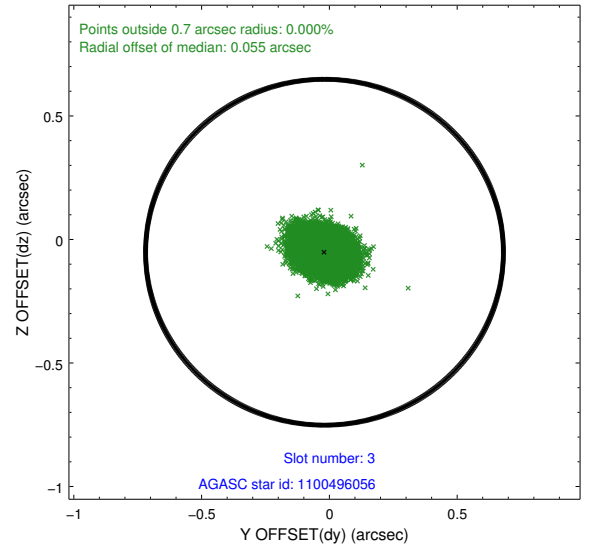
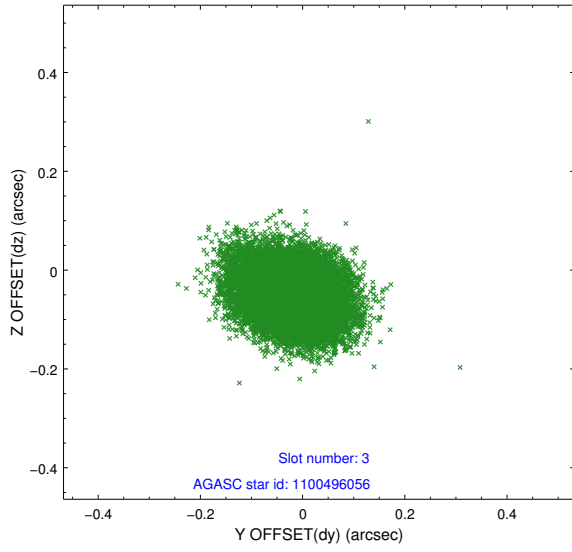
Slot Statistics

slot	status	id	mag	n_pts	med_dy	med_dz	dr1	dr2	ra	dec	mean_y	mean_z
0	FID	ACIS-I-2	7.15	5891	-0.021	-0.140	0.011	0.020	0.000000	0.000000	-756.31	-929.07
1	FID	ACIS-I-4	7.16	5889	-0.018	0.059	0.007	0.016	0.000000	0.000000	2157.60	977.31
2	FID	ACIS-I-5	7.23	5892	-0.062	0.150	0.010	0.017	0.000000	0.000000	-1809.85	974.66
3	GUIDE	1100496056	8.86	11778	-0.019	-0.052	0.080	0.128	301.571771	-48.709419	1126.31	-2217.03
4	GUIDE	1100497896	9.48	11773	-0.079	-0.011	0.095	0.157	302.103458	-48.025223	-1181.07	-680.95
5	GUIDE	1101018712	9.45	11780	0.119	-0.010	0.082	0.132	302.763008	-48.818100	1839.65	546.08
6	GUIDE	1100500168	9.56	11772	-0.146	-0.060	0.097	0.154	302.668144	-47.772171	-1925.32	779.93
7	GUIDE	1101015168	8.99	11775	0.126	0.136	0.077	0.125	303.522981	-48.811673	2046.53	2336.26

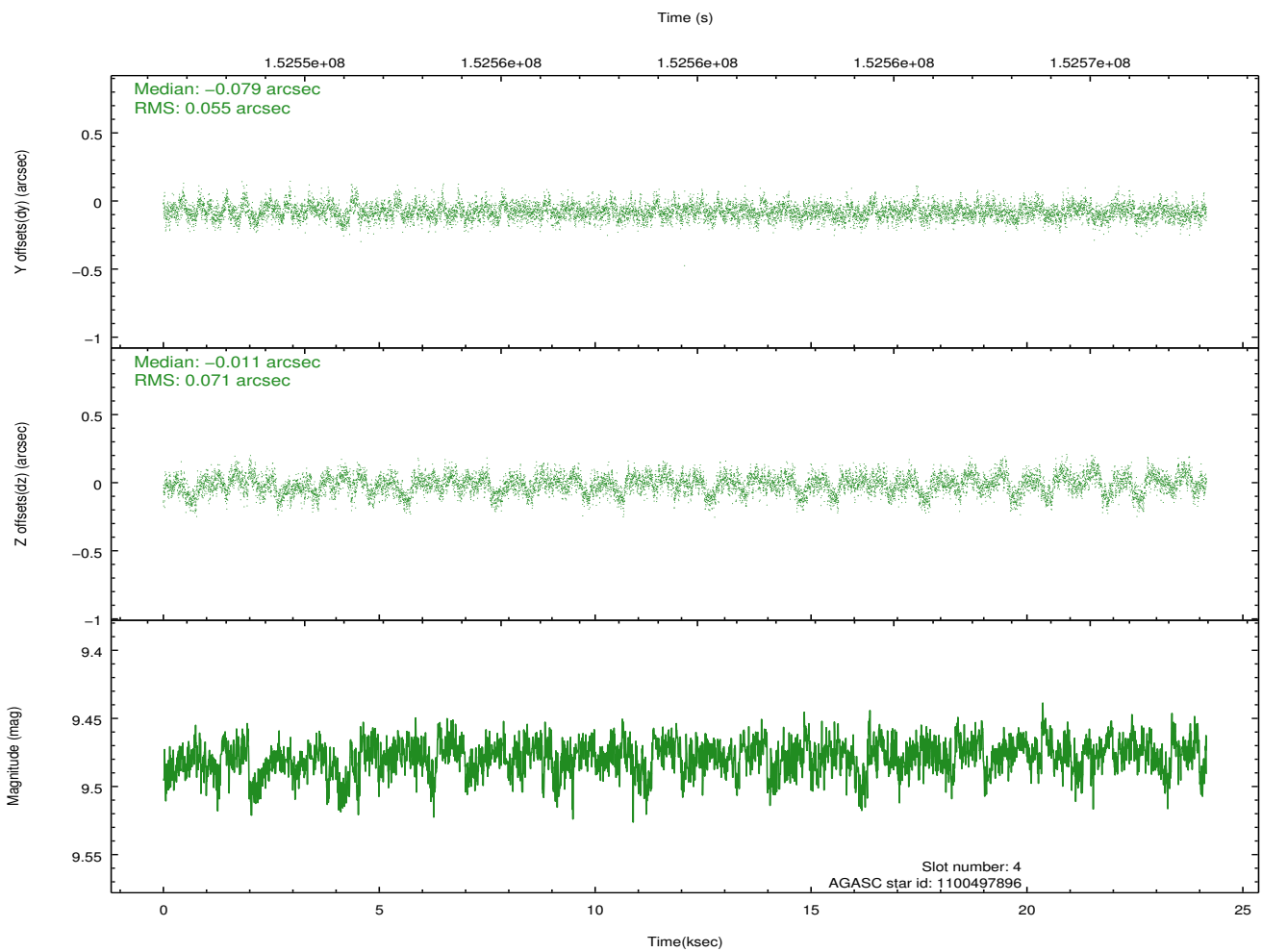
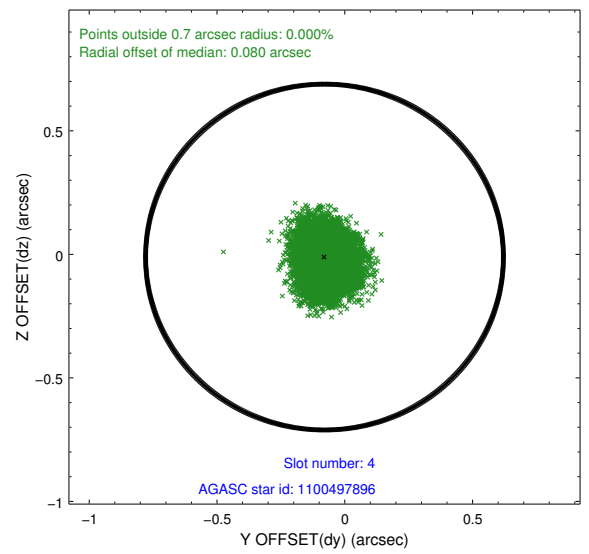
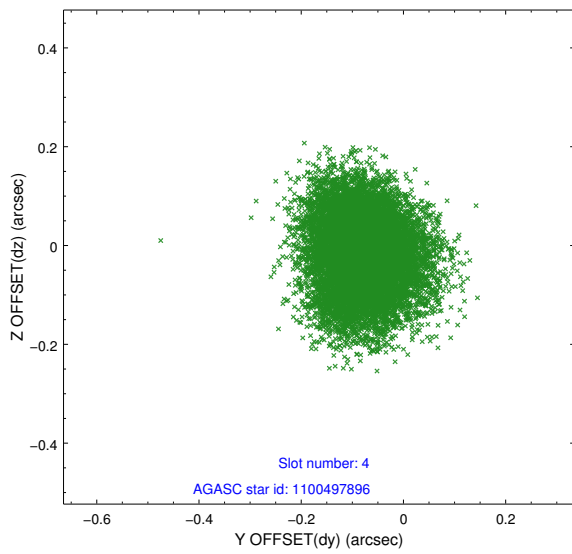
∞

2.4 Star Slots

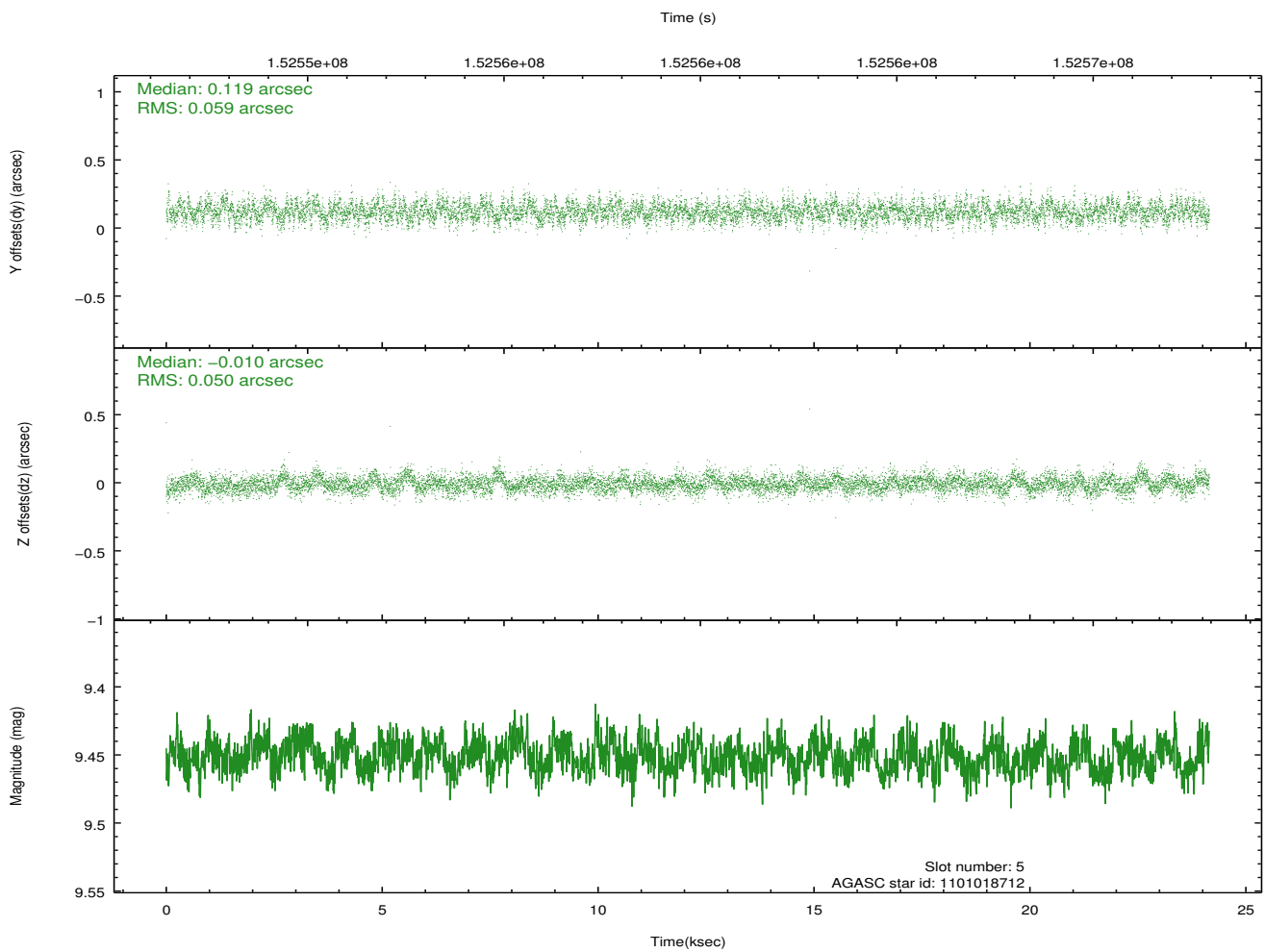
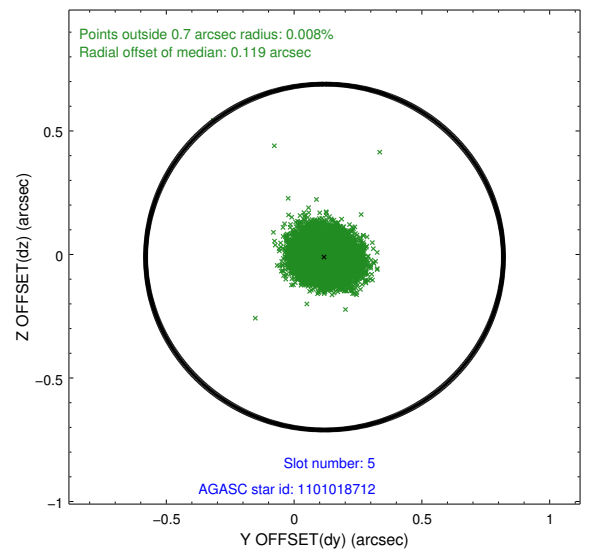
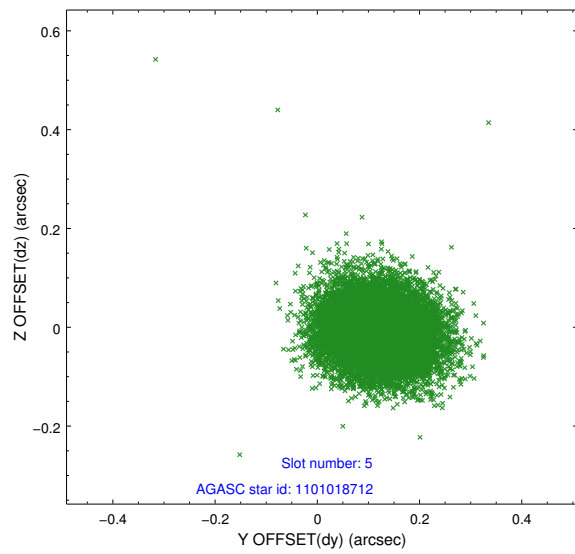
2.4.1 Slot 3



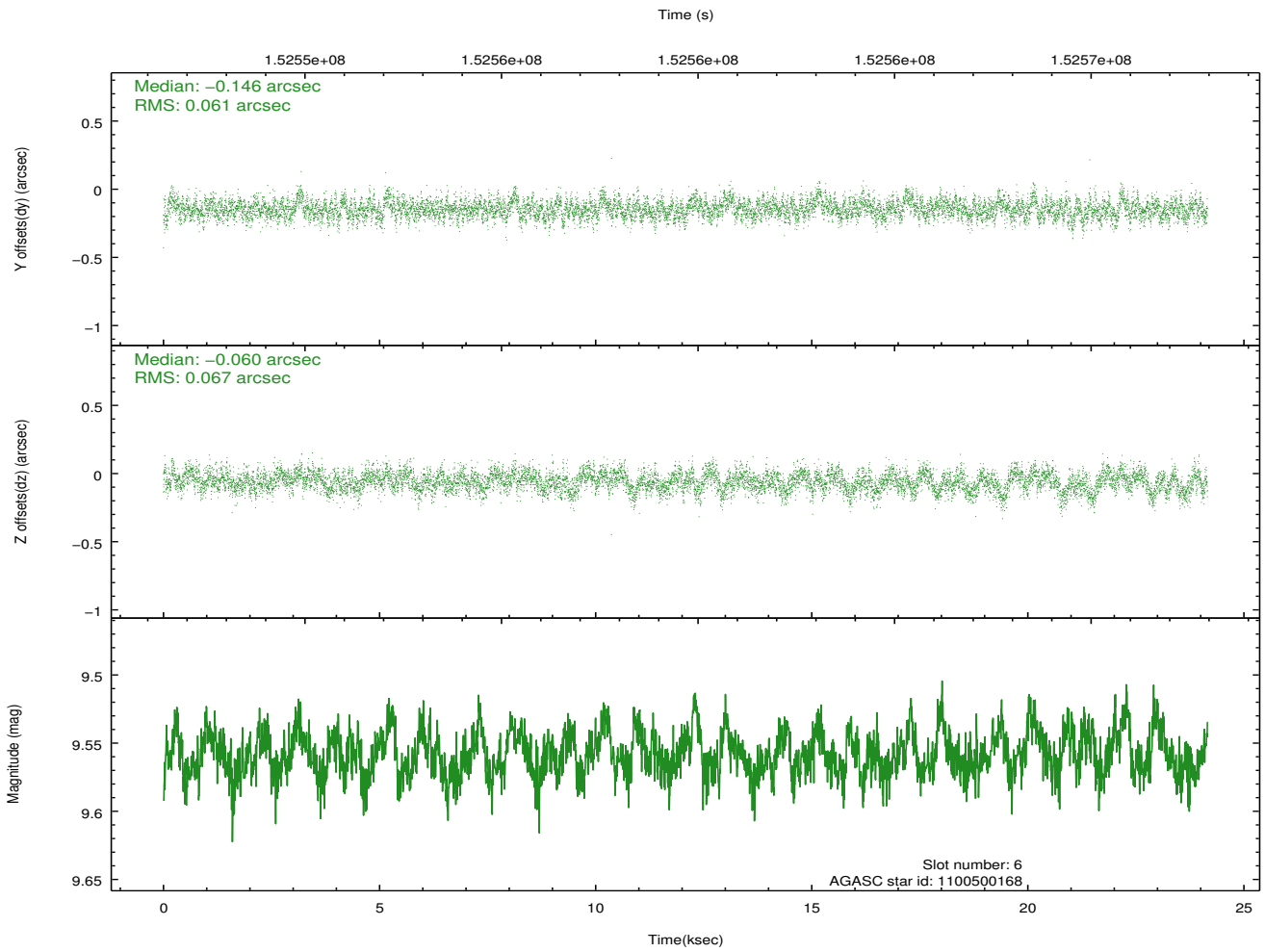
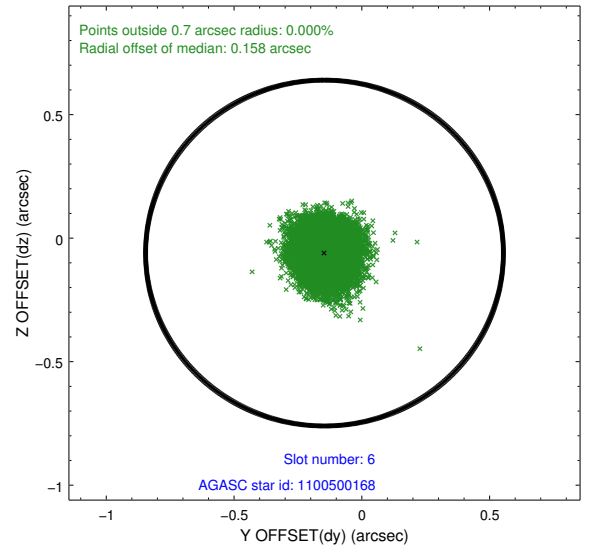
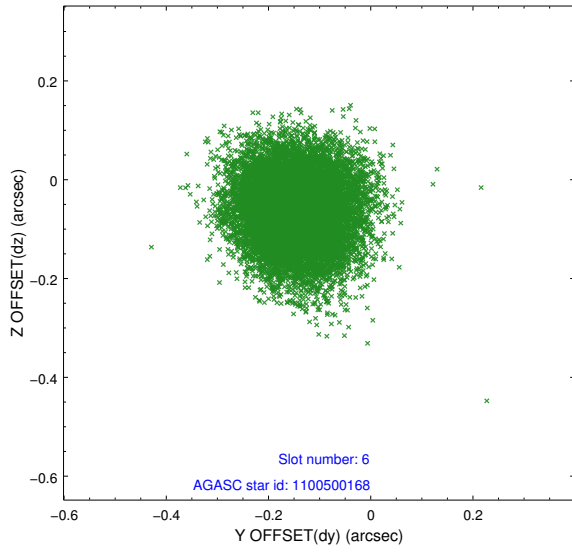
2.4.2 Slot 4



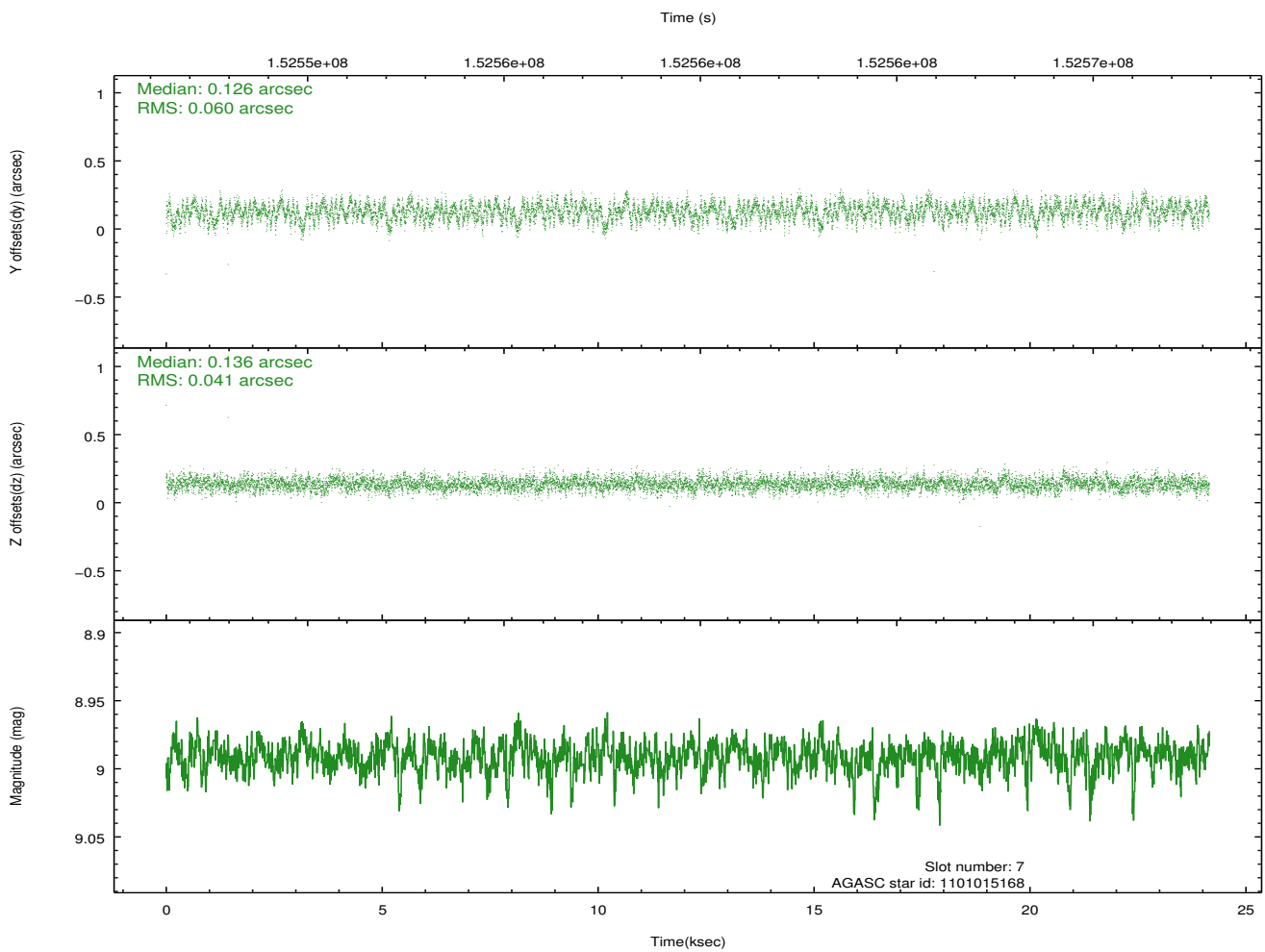
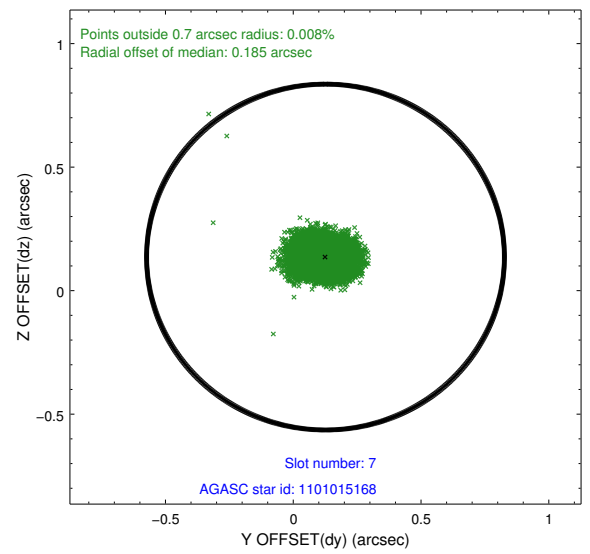
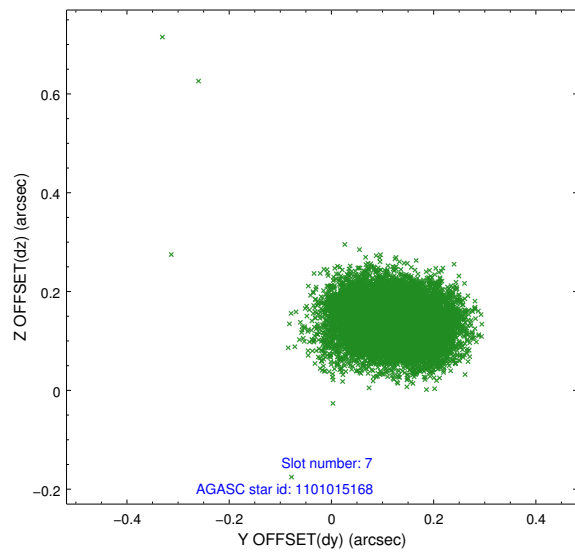
2.4.3 Slot 5



2.4.4 Slot 6

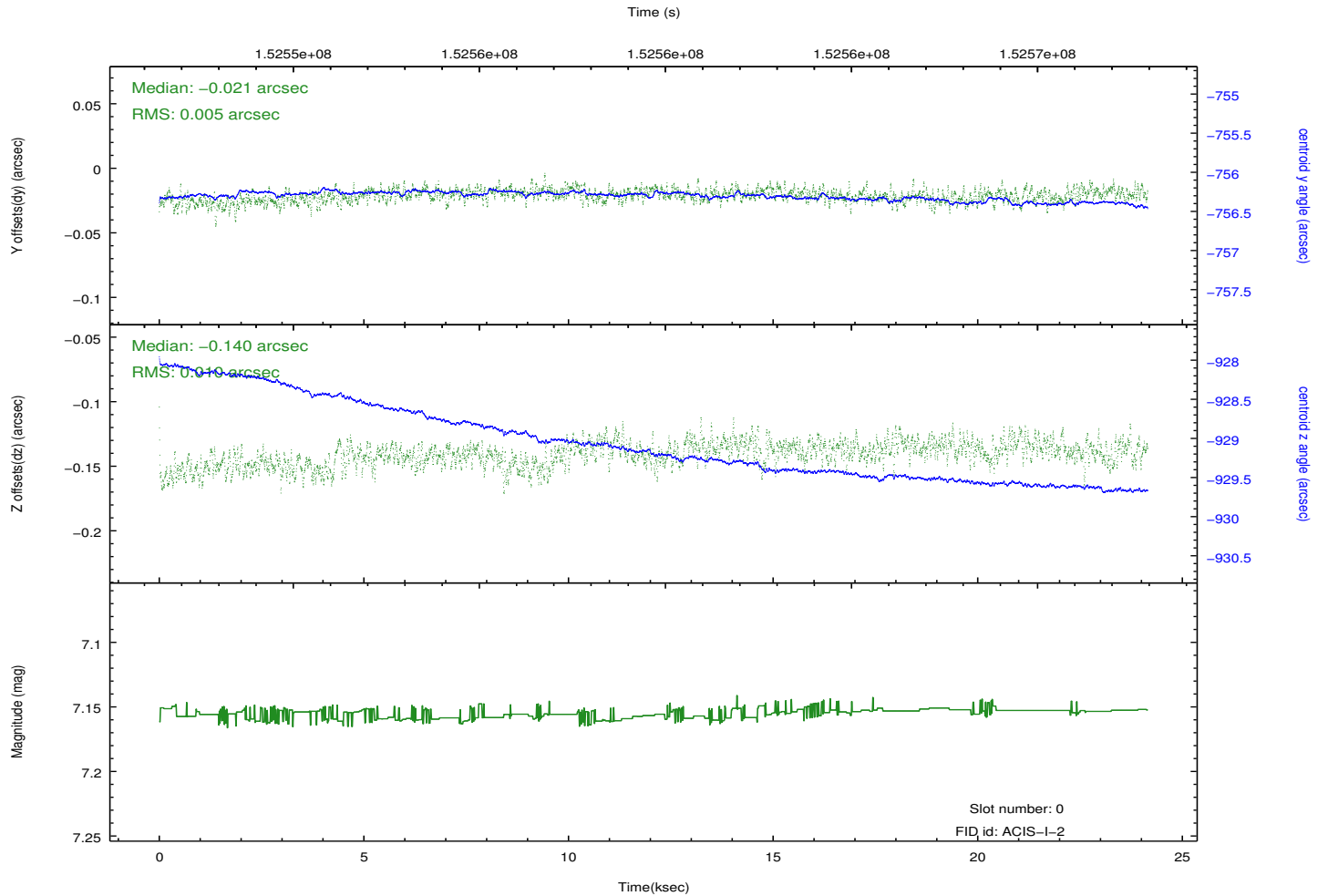
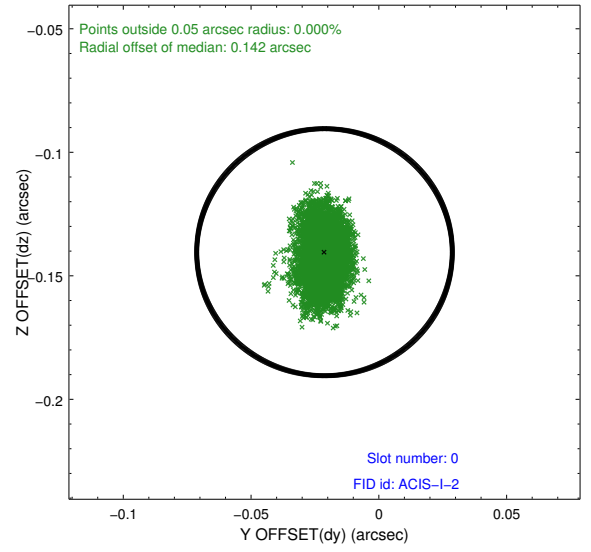
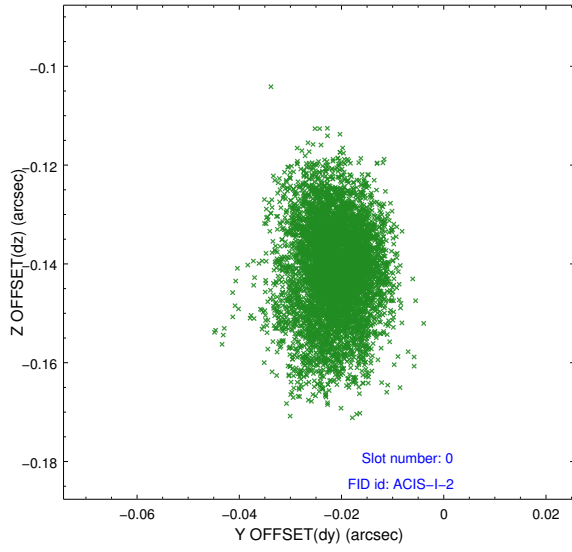


2.4.5 Slot 7

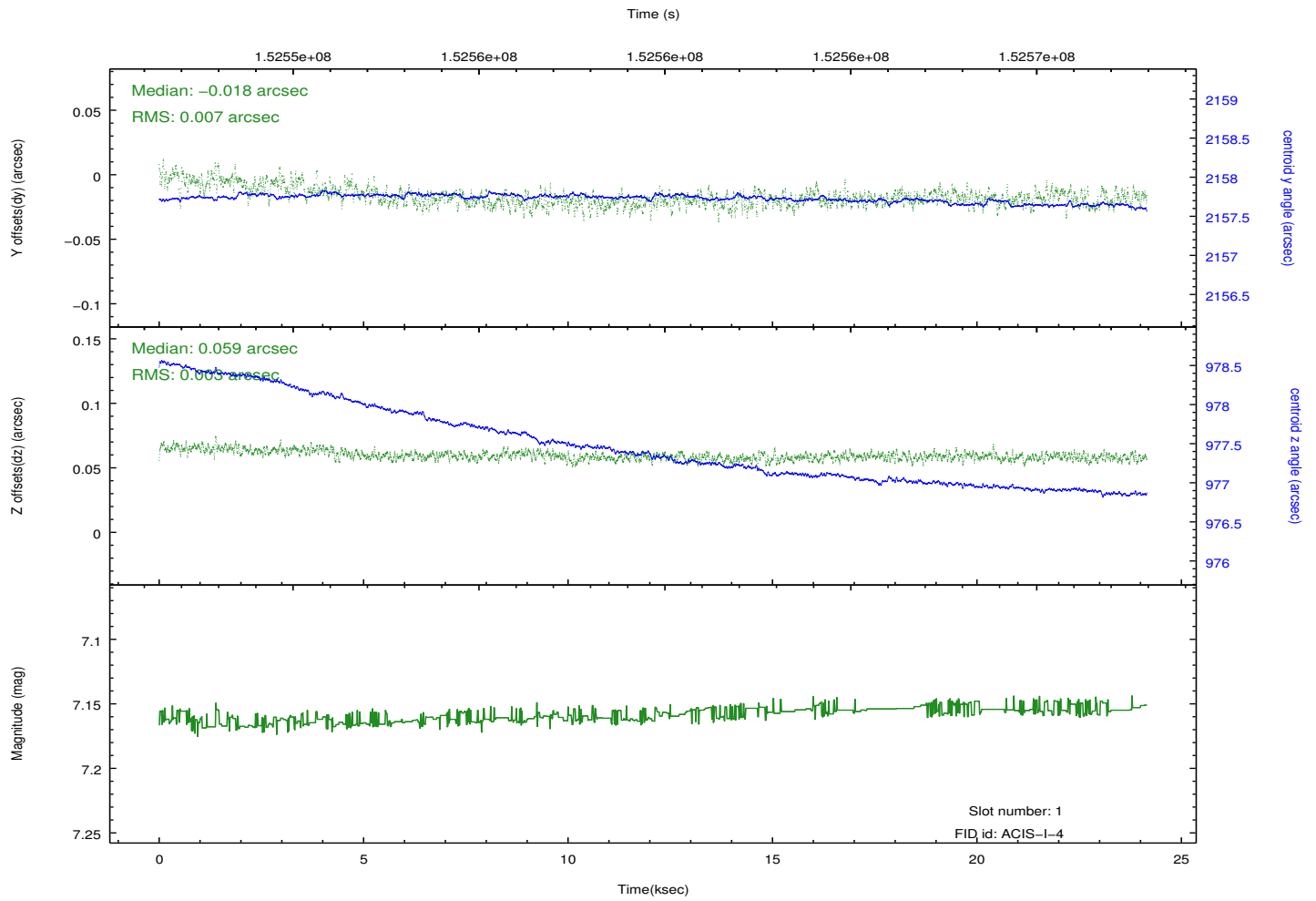
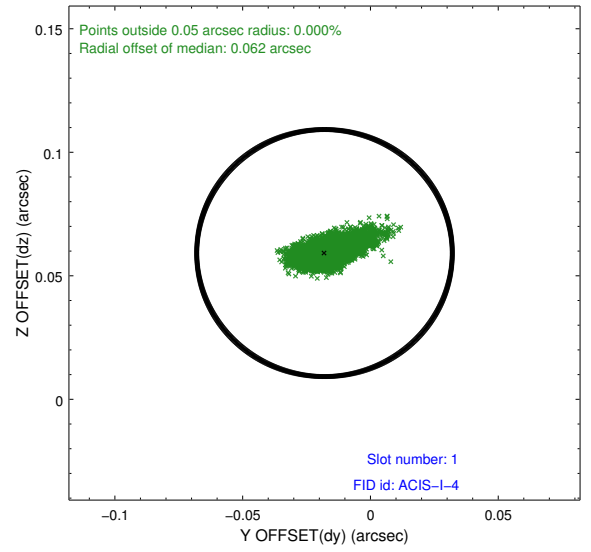
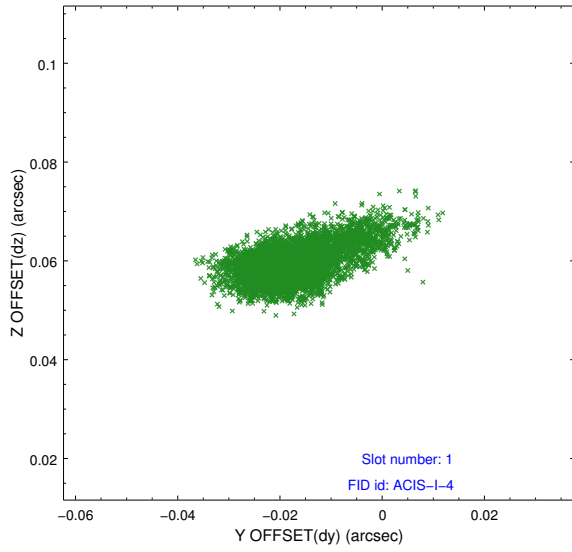


2.5 FID Slots

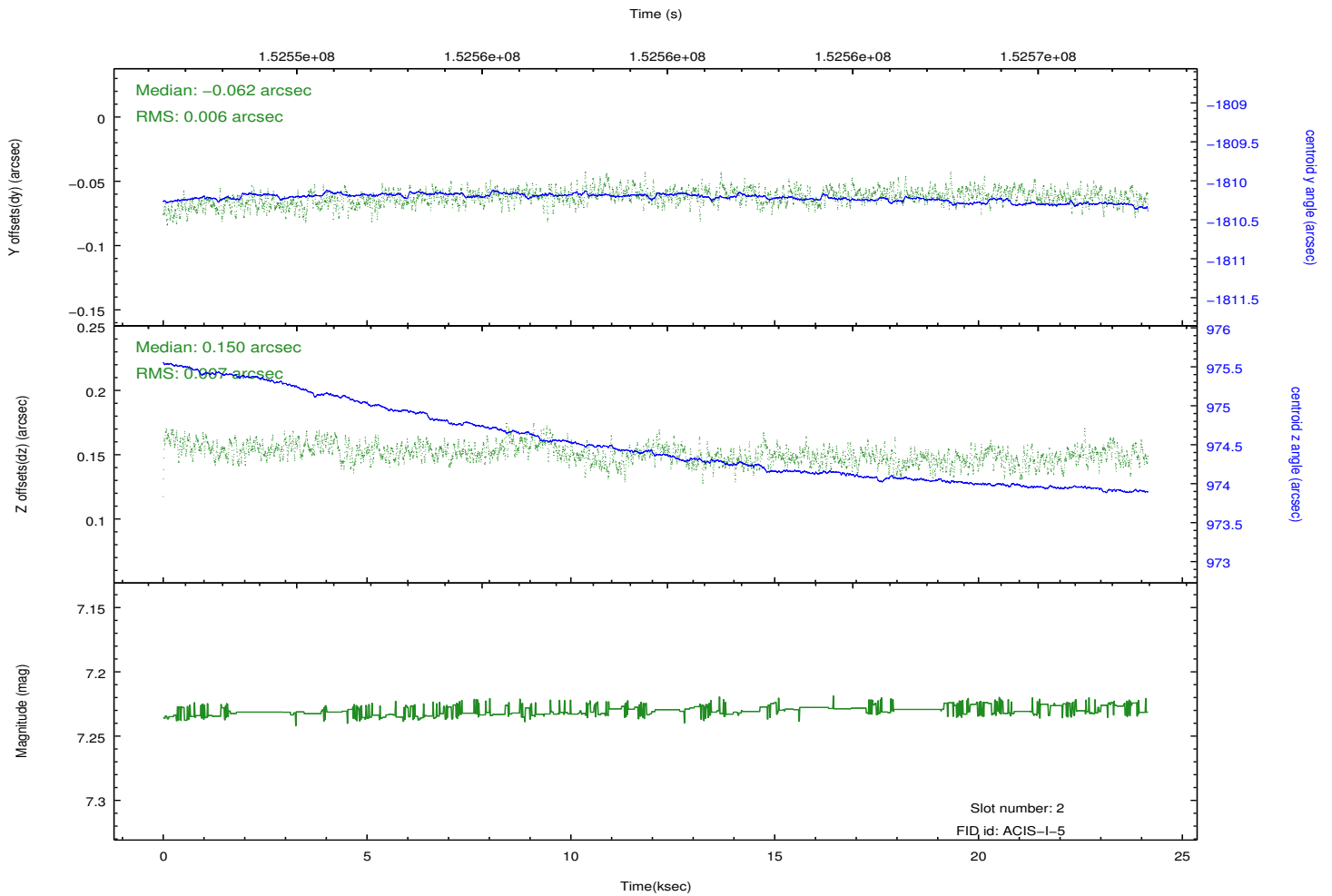
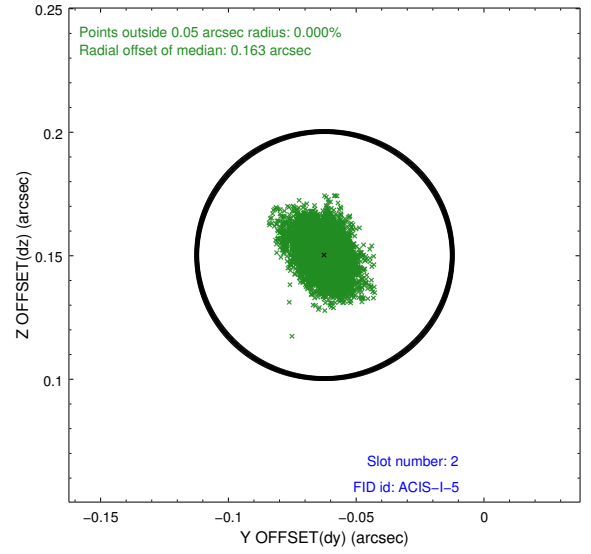
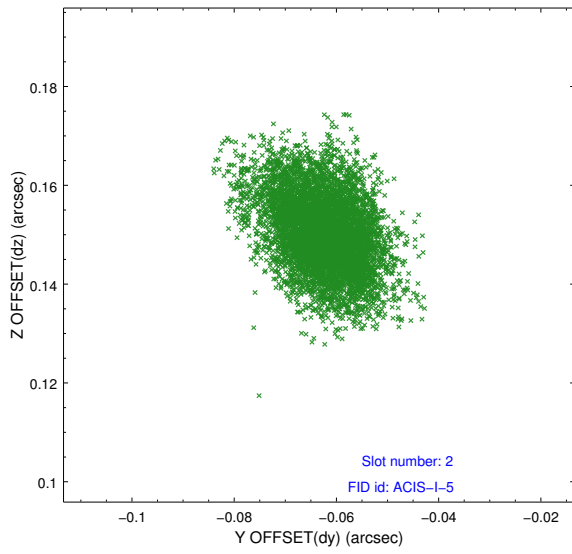
2.5.1 Slot 0



2.5.2 Slot 1



2.5.3 Slot 2



A Summary

A.1 Status

V&V Scientist	Jen Lauer
V&V Date (YYYY-MM-DD)	2012.10.26
V&V Edition	1
V&V Disposition and Status	OK
V&V Charge Time	23.773

A.2 Comments

There was an apparent grazing incident cosmic ray artifact in level 1, but it is removed in level 2