

V&V Reference Report

L2 ASCDS Version : 8.4.5

Observation 3271 - L2 Version 3
Chandra X-Ray Center

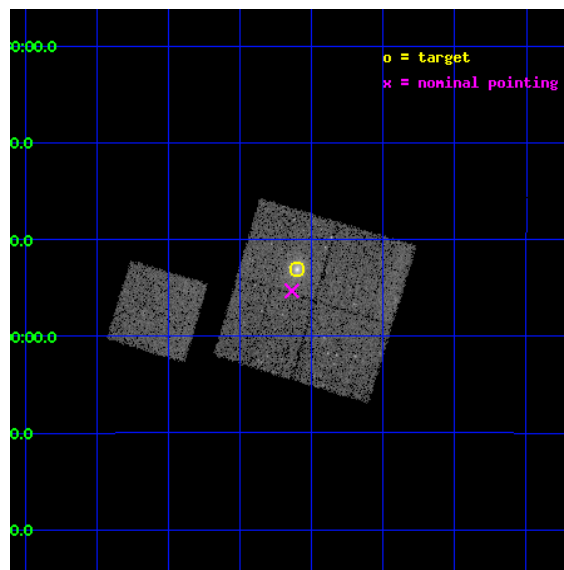
L2 Processing Date : Oct 2 2012

Contents

1	Front	2
2	OBI	3
2.1	OBI	3
2.1.1	Images	3
2.1.2	Bias	3
2.1.3	Parameters	4
2.1.4	Events	4
2.2	Compared Parameters	5
2.3	Aspect	6
2.4	Star Slots	9
2.4.1	Slot 3	9
2.4.2	Slot 4	10
2.4.3	Slot 5	11
2.4.4	Slot 6	12
2.4.5	Slot 7	13
2.5	FID Slots	14
2.5.1	Slot 0	14
2.5.2	Slot 1	15
2.5.3	Slot 2	16
A	Summary	17
A.1	Status	17
A.2	Comments	17

1 Front

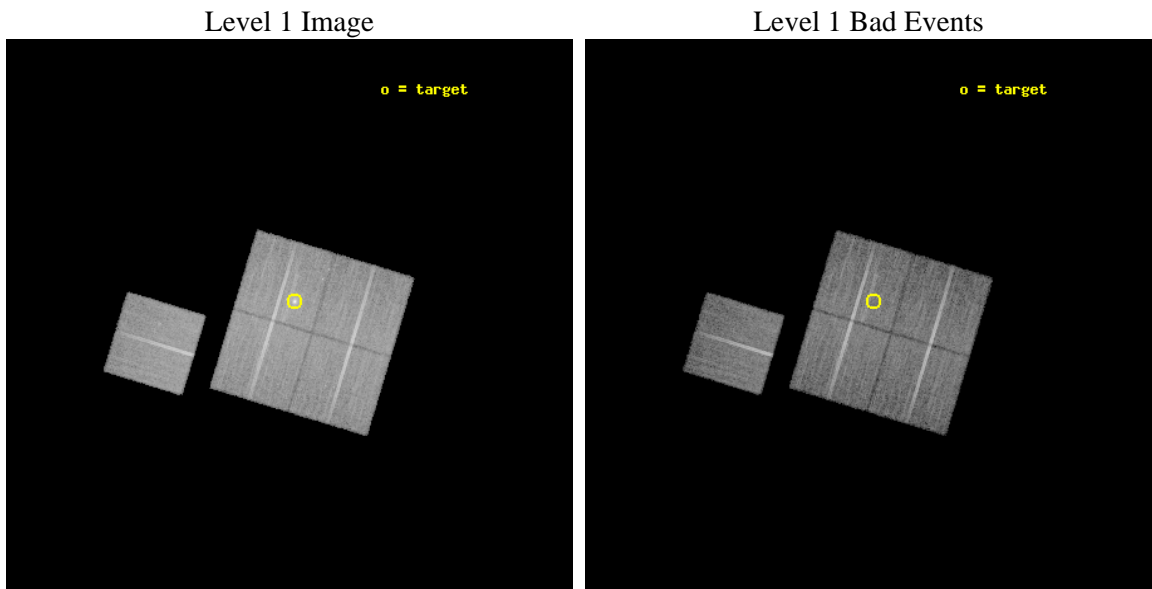
seq_num	800271	Sequence number
obs_id	3271	Observation id
title	MACS: THE X-RAY PROPERTIES OF THE MOST MASSIVE GALAXY CLUSTERS AT Z>0.3	Proposal title
observer	Dr. Harald Ebeling	Principal investigator
object	MACSJ0429.6-0253	Source name
dtcycle	0	
cycle	P	events from which exps? Prim/Second/Both
ra_targ	67.400417	Observer's specified target RA [deg]
dec_targ	-2.885278	Observer's specified target Dec [deg]
ra_nom	67.409482662717	Nominal RA [deg]
dec_nom	-2.9218831270088	Nominal Dec [deg]
roll_nom	286.87929421738	Nominal Roll [deg]
revision	3	Processing version of data
ontime	23472.264084071	Sum of GTIs [s]
livetime	23165.581673783	Livetime [s]
ontime0	23472.140964076	Sum of GTIs [s]
ontime1	23472.181974128	Sum of GTIs [s]
ontime2	23465.94108364	Sum of GTIs [s]
ontime3	23472.264084071	Sum of GTIs [s]
ontime6	23468.958963811	Sum of GTIs [s]
l2events	62248	Number of level 2 events



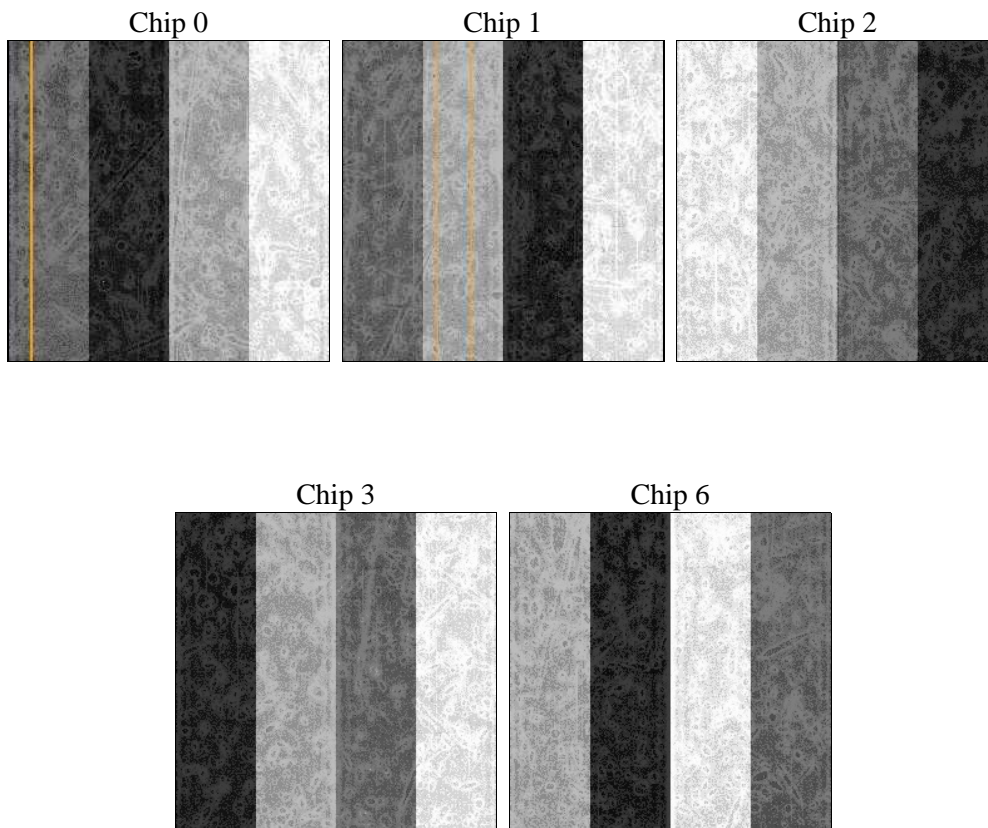
2 OBI

2.1 OBI

2.1.1 Images



2.1.2 Bias



2.1.3 Parameters

obi_num	0	Obi number	sched_exp_time	23700.000000	[s] Scheduled observation exposure time
ascdsver	8.4.5	Processing system revision	ontime	23472.264084071	Sum of GTIs [s]
caldbver	4.5.2	 	ontime0	23472.140964076	Sum of GTIs [s]
date	2012-10-02T05:56:18	Date and time of file creation	ontime1	23472.181974128	Sum of GTIs [s]
revision	3	Processing version of data	ontime2	23465.94108364	Sum of GTIs [s]
			ontime3	23472.264084071	Sum of GTIs [s]
			ontime6	23468.958963811	Sum of GTIs [s]
			l1events	657379	Number of level 1 events

2.1.4 Events

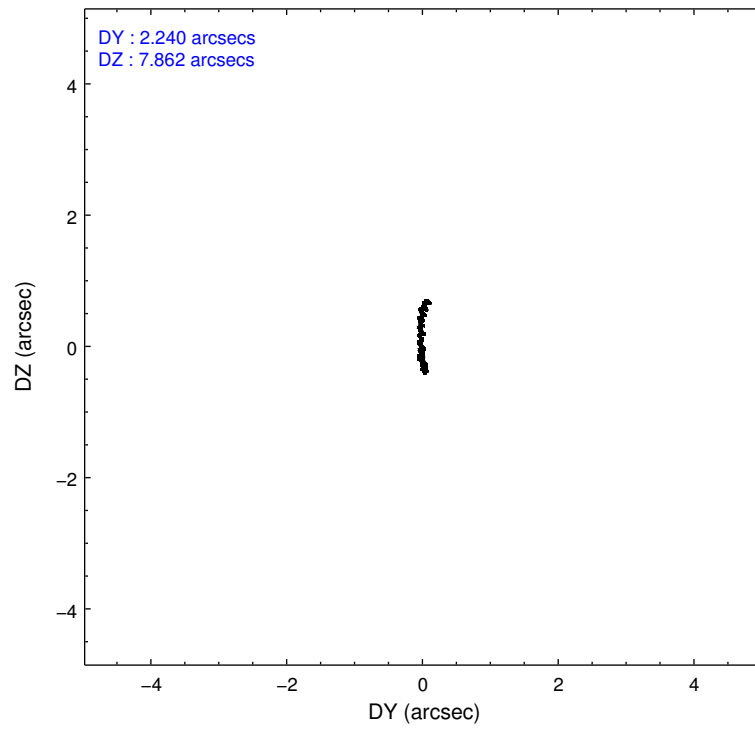
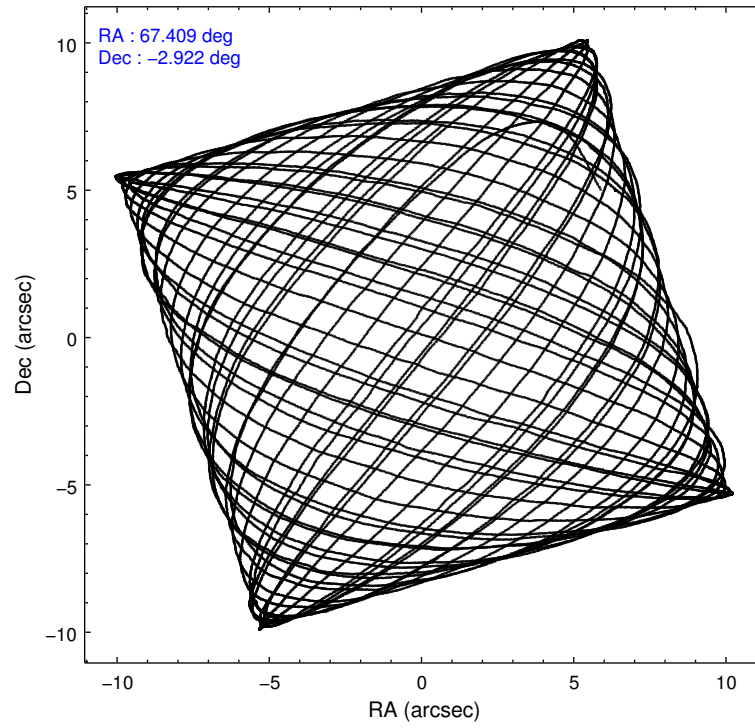
	ccd 0	ccd 1	ccd 2	ccd 3	ccd 6
level 1 events	122577	123500	136752	142685	131865
rejected events	109442	109216	124189	122276	118501
rejected %	89%	88%	90%	85%	89%

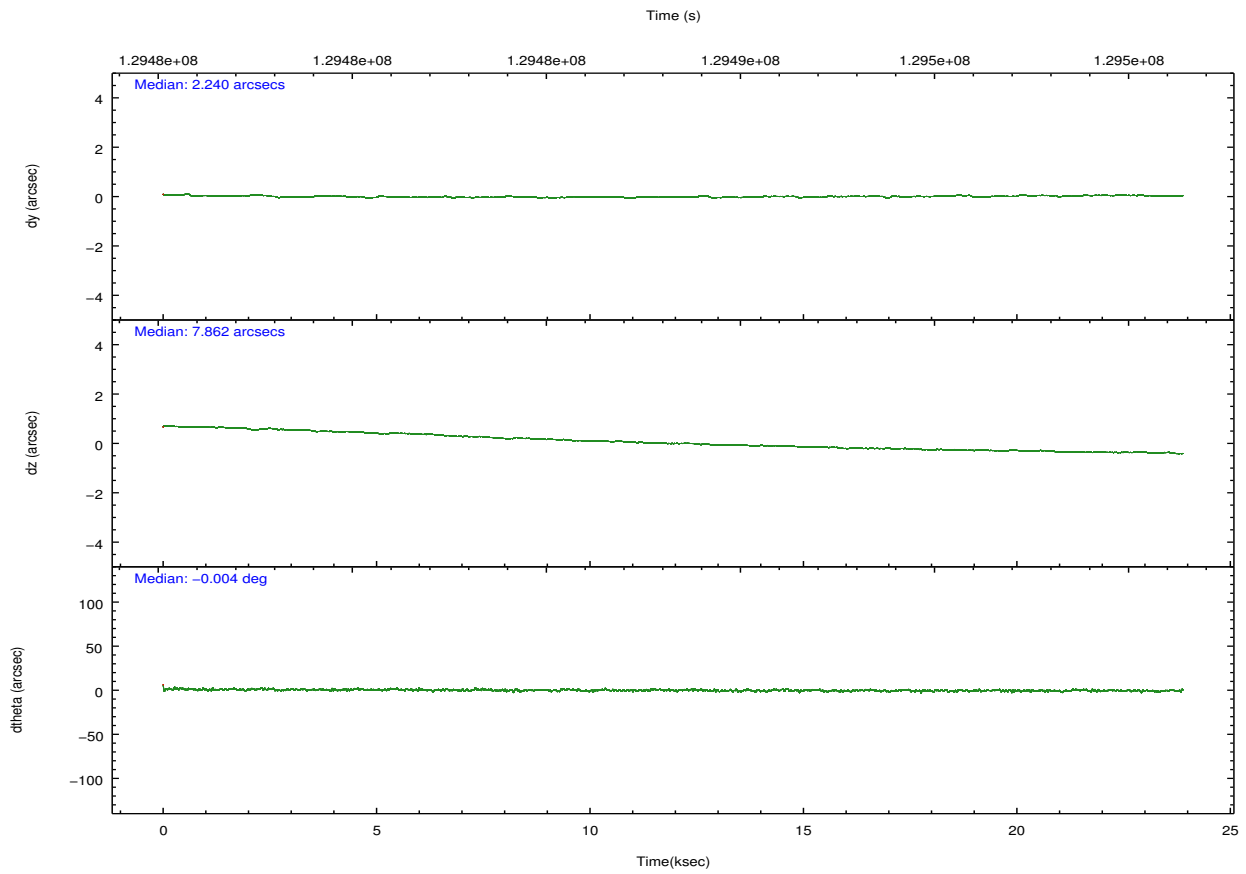
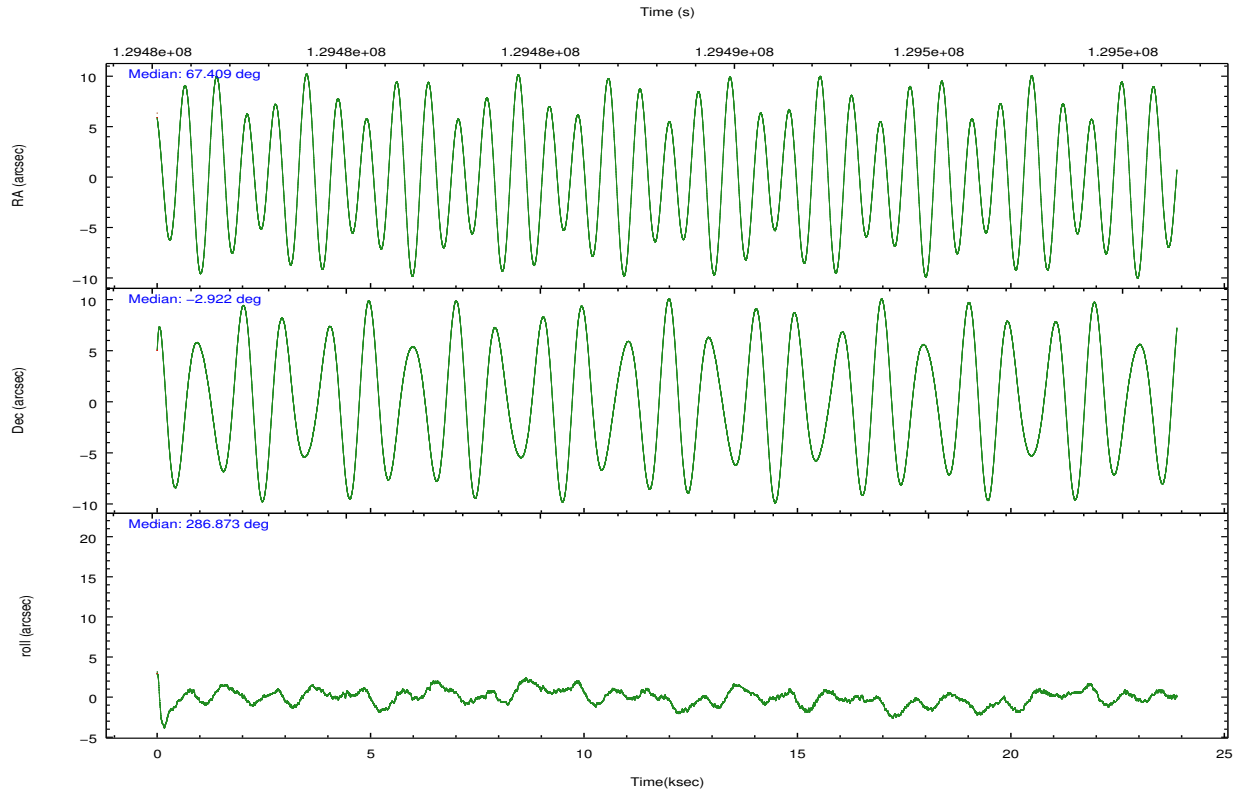
	ccd 0	ccd 1	ccd 2	ccd 3	ccd 6
grade 0 events	4776	5427	4759	11131	5080
	3%	4%	3%	7%	3%
grade 1 events	56	59	61	77	63
	0%	0%	0%	0%	0%
grade 2 events	3000	2914	2803	3328	2714
	2%	2%	2%	2%	2%
grade 3 events	1542	1642	1347	1678	1432
	1%	1%	0%	1%	1%
grade 4 events	1407	1573	1392	1616	1456
	1%	1%	1%	1%	1%
grade 5 events	4193	4437	3891	4678	4789
	3%	3%	2%	3%	3%
grade 6 events	2413	2730	2266	2656	2687
	1%	2%	1%	1%	2%
grade 7 events	105190	104718	120233	117521	113644
	85%	84%	87%	82%	86%

2.2 Compared Parameters

Parameter	Planned	Actual	Parameter	Planned	Actual
Instrument	ACIS	ACIS	Obspar format version number	7	7
Detector	ACIS-01236	ACIS-01236	Obspar file type	PREDICTED	ACTUAL
Grating	NONE	NONE	Obspar update status	NONE	UPDATED
Data mode	VFAINT	VFAINT	Number of optional ACIS chips dropped	0	0
Observation mode	POINTING	POINTING	On-chip summing requested	N	N
[deg] Pointing RA	67.389412	67.40948266271745	Subarray requested	NONE	NONE
[deg] Pointing Dec	-2.903178	-2.921883127008836	Alternating exposures requested	N	N
[deg] Pointing Roll	286.669587	286.8792942173843	[s] Primary exposure time	0.000000	3.1
[mm] SIM focus pos	-0.782348	-0.7809083437167272			
[mm] SIM defocus	0	0.001439871863259334			
[mm] SIM translation stage pos	-227.742463	-227.734108438797			
[mm] SIM translation stage offset	-5.85	-5.858344564132665			
[s] Observation start time (MET)	129476509.184000	129475715.30498			
Observation start date	2002-02-07T13:40:45	2002-02-07T13:28:35			
[s] Observation end time (MET)	129500209.184000	129500805.25599			
Observation end date	2002-02-07T20:15:45	2002-02-07T20:26:45			
Read mode	TIMED	TIMED			

2.3 Aspect



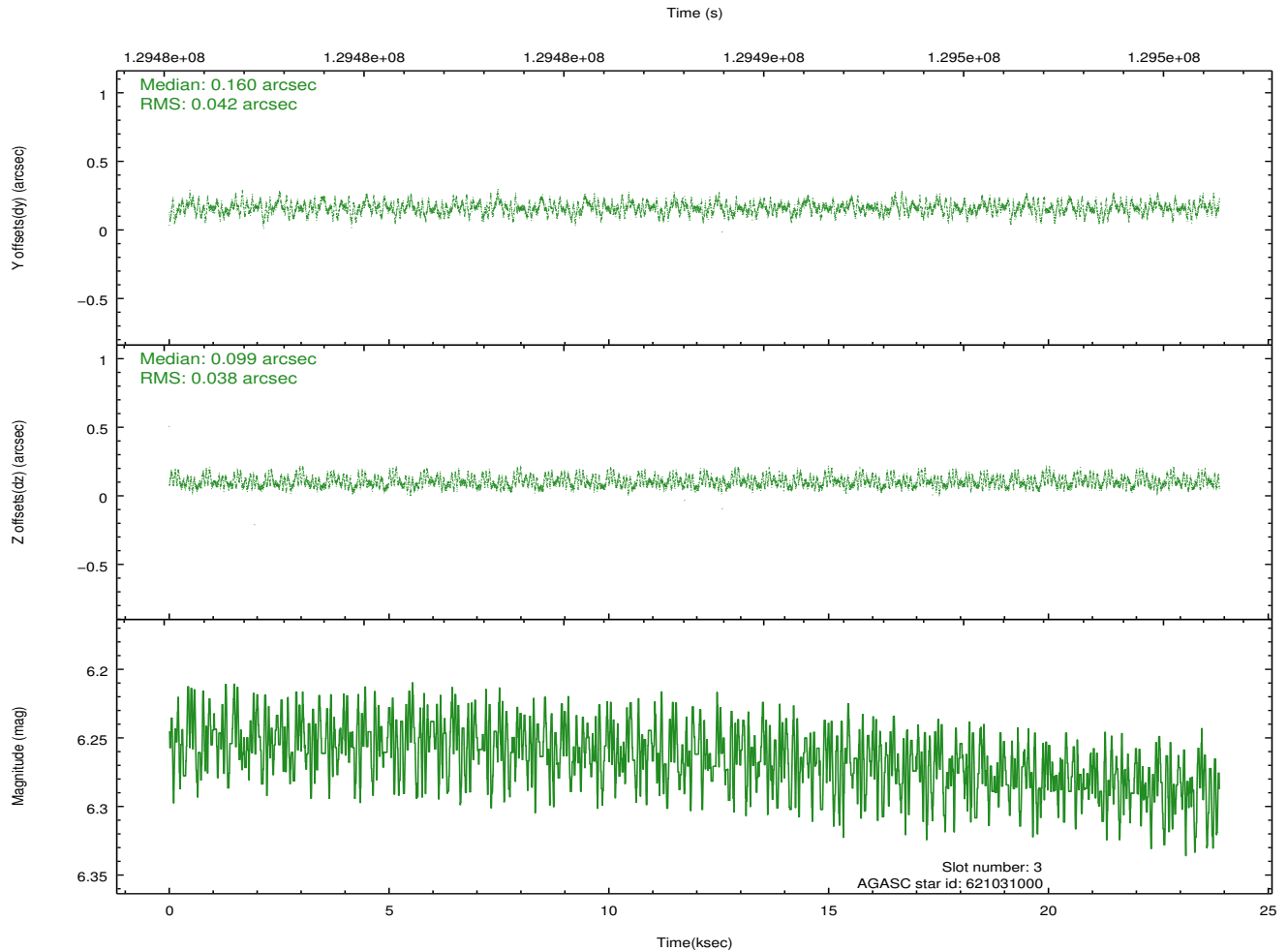
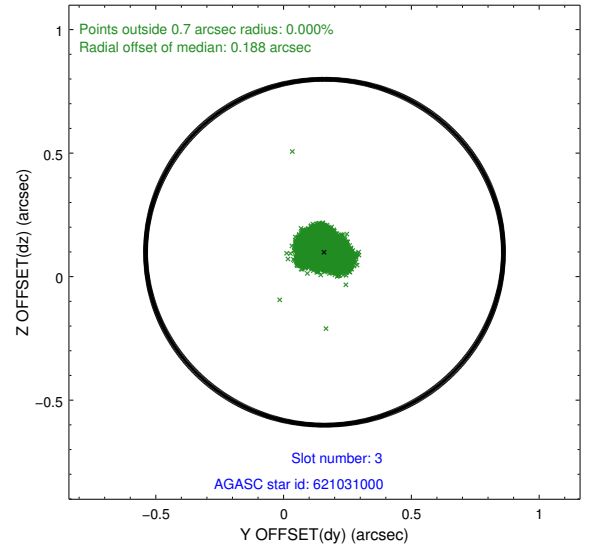
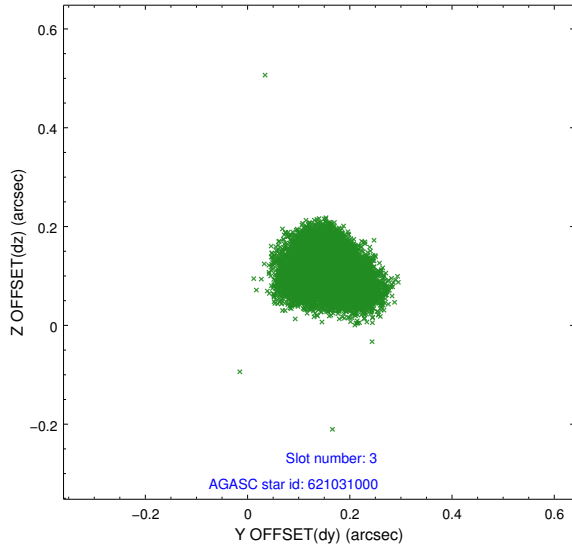


Slot Statistics

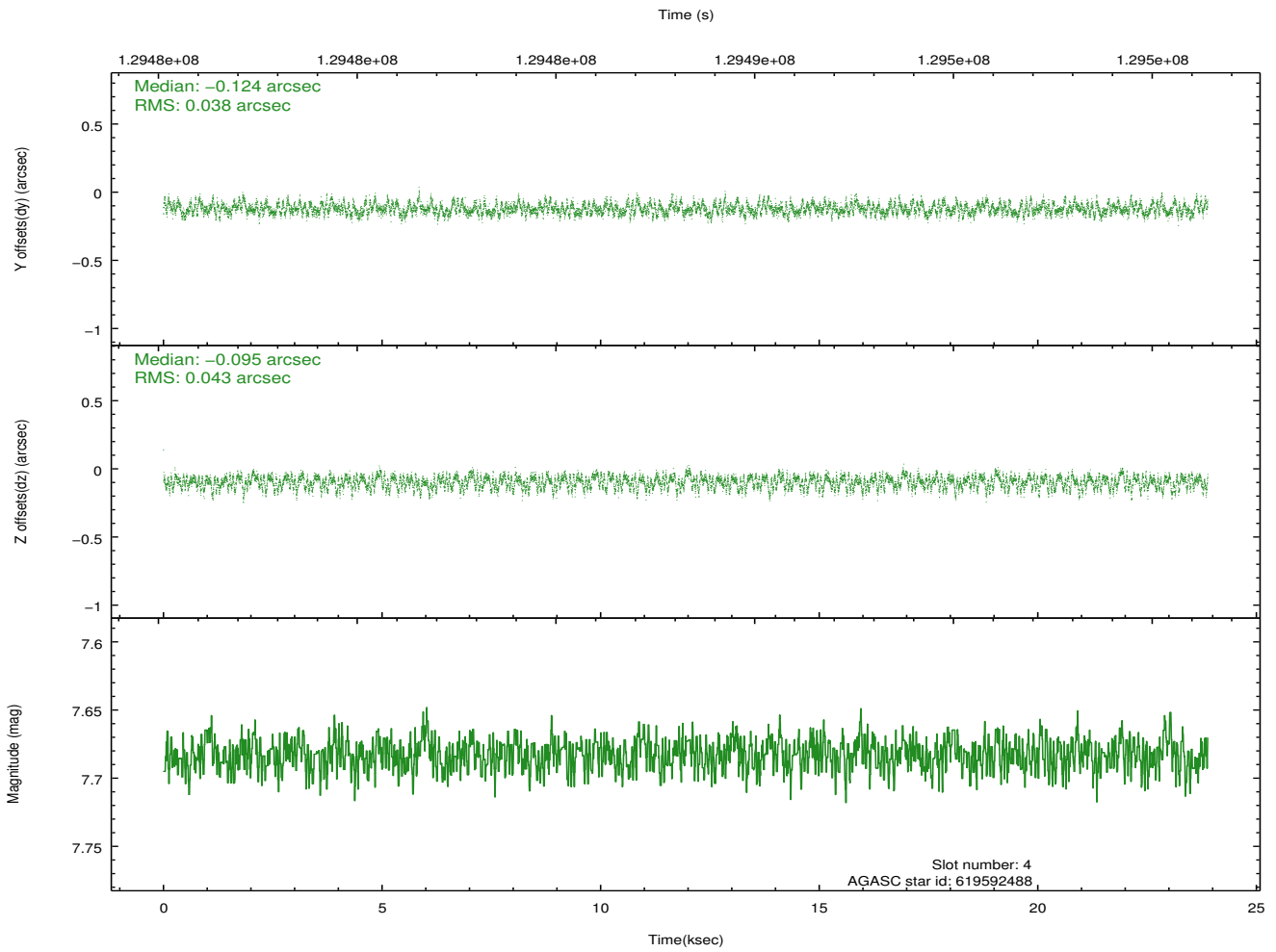
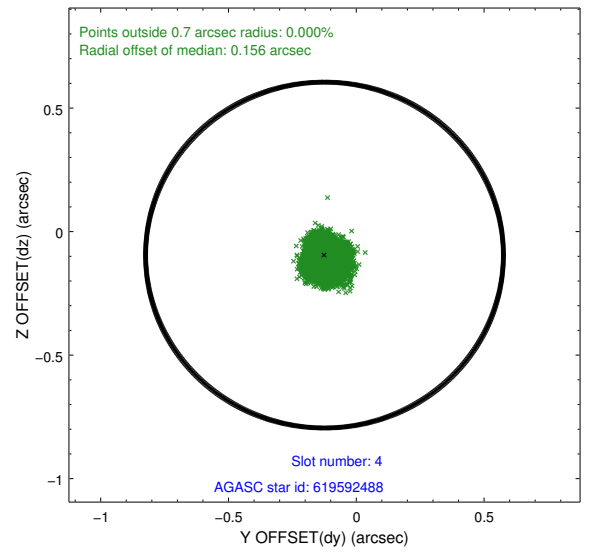
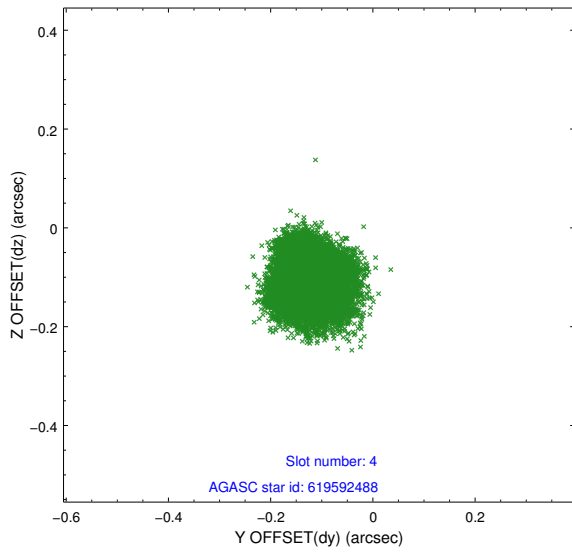
slot	status	id	mag	n_pts	med_dy	med_dz	dr1	dr2	ra	dec	mean_y	mean_z
0	FID	ACIS-I-2	6.96	5826	-0.128	-0.027	0.011	0.017	0.000000	0.000000	-757.12	-957.21
1	FID	ACIS-I-4	6.95	5824	-0.026	0.125	0.015	0.022	0.000000	0.000000	2156.91	949.05
2	FID	ACIS-I-6	7.00	5825	0.056	-0.034	0.011	0.018	0.000000	0.000000	403.56	1590.45
3	GUIDE	621031000	6.26	11652	0.160	0.099	0.061	0.095	68.156472	-3.209539	1848.86	2324.92
4	GUIDE	619592488	7.68	11647	-0.124	-0.095	0.062	0.097	67.359237	-2.414102	-1717.18	400.93
5	GUIDE	619972720	8.94	11648	0.012	-0.121	0.084	0.134	66.729190	-2.831960	-925.35	-2201.02
6	GUIDE	621019928	8.66	11651	-0.060	0.136	0.066	0.108	67.503503	-2.339611	-1825.62	974.85
7	GUIDE	619979216	8.29	11648	0.007	-0.021	0.073	0.115	66.776292	-3.188767	353.92	-2406.26

2.4 Star Slots

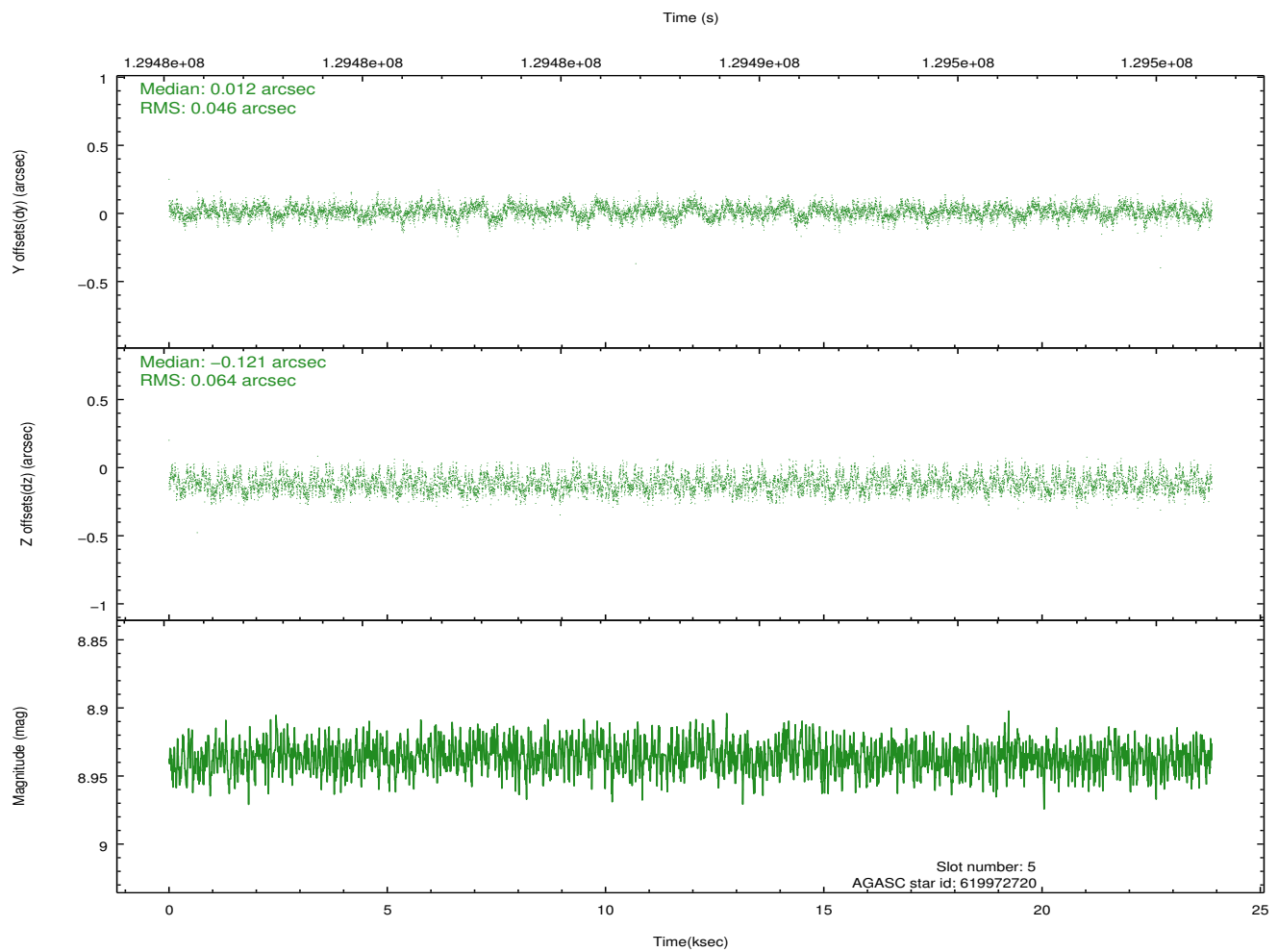
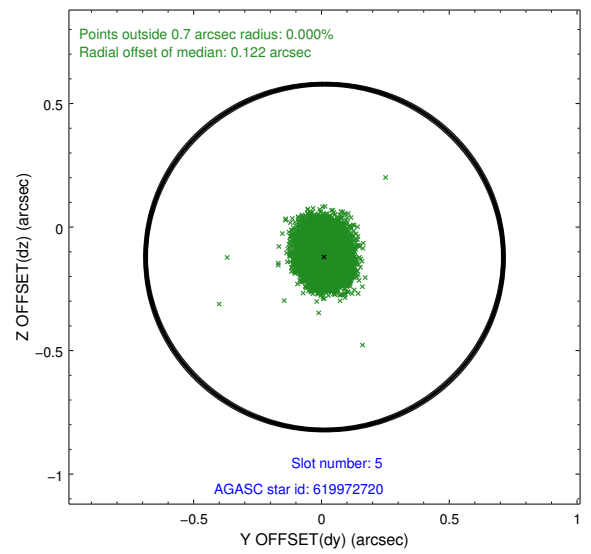
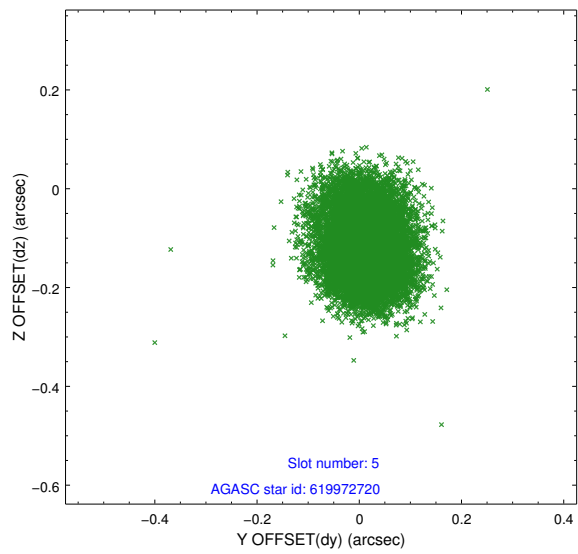
2.4.1 Slot 3



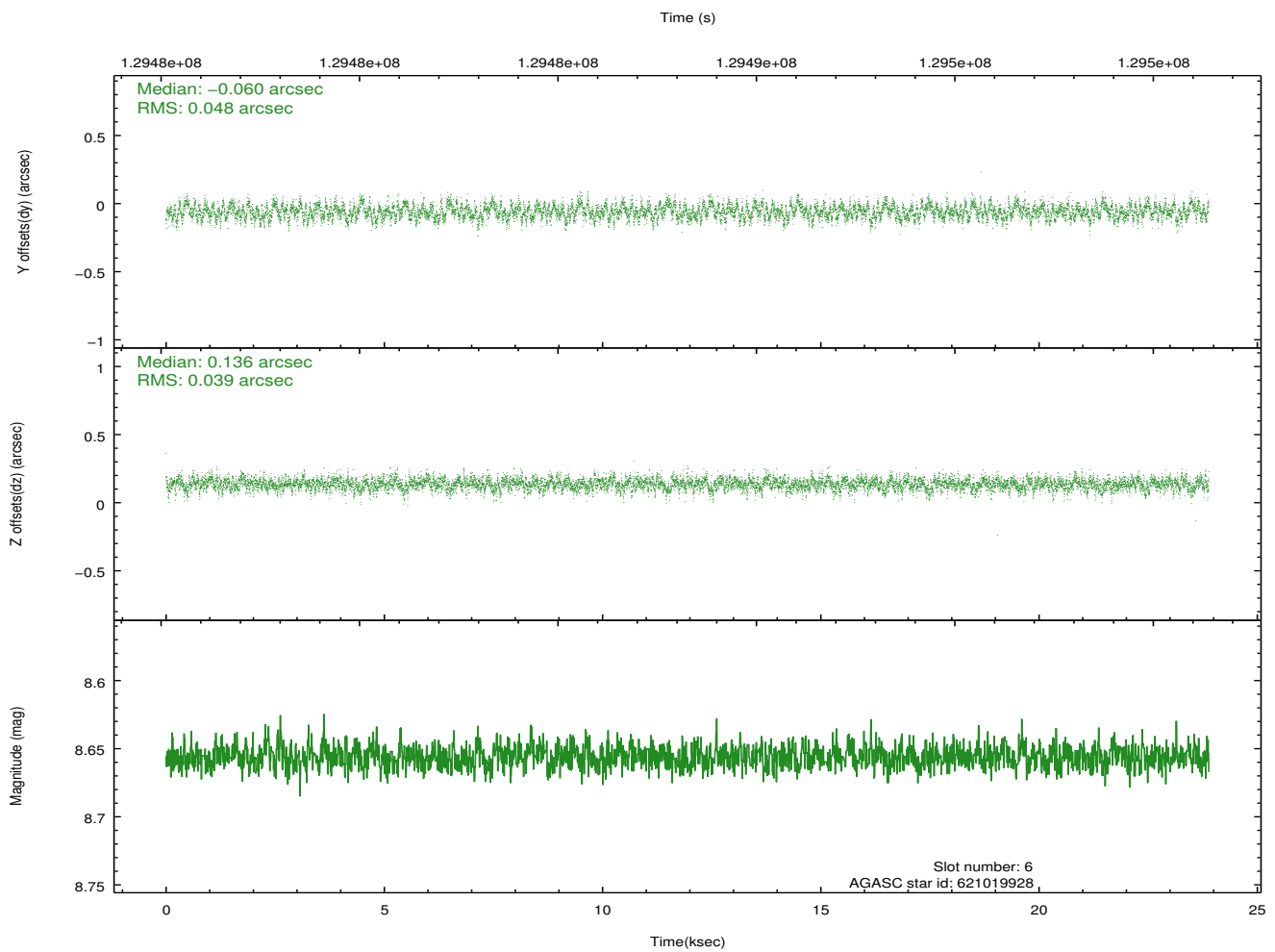
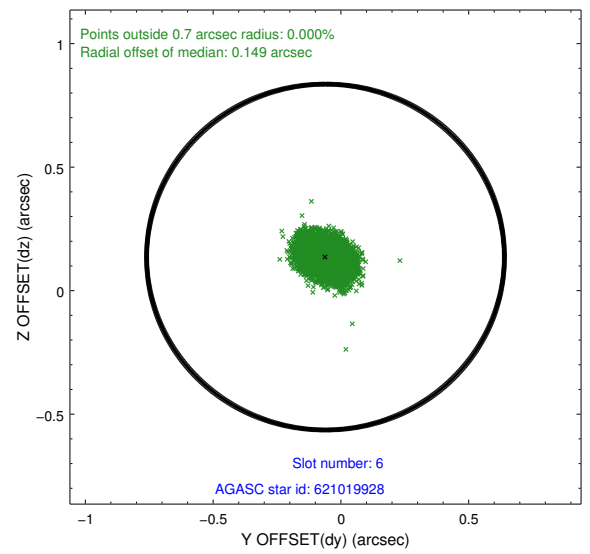
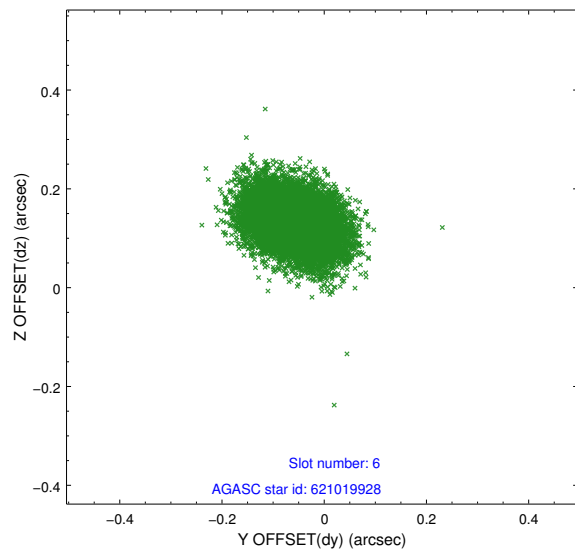
2.4.2 Slot 4



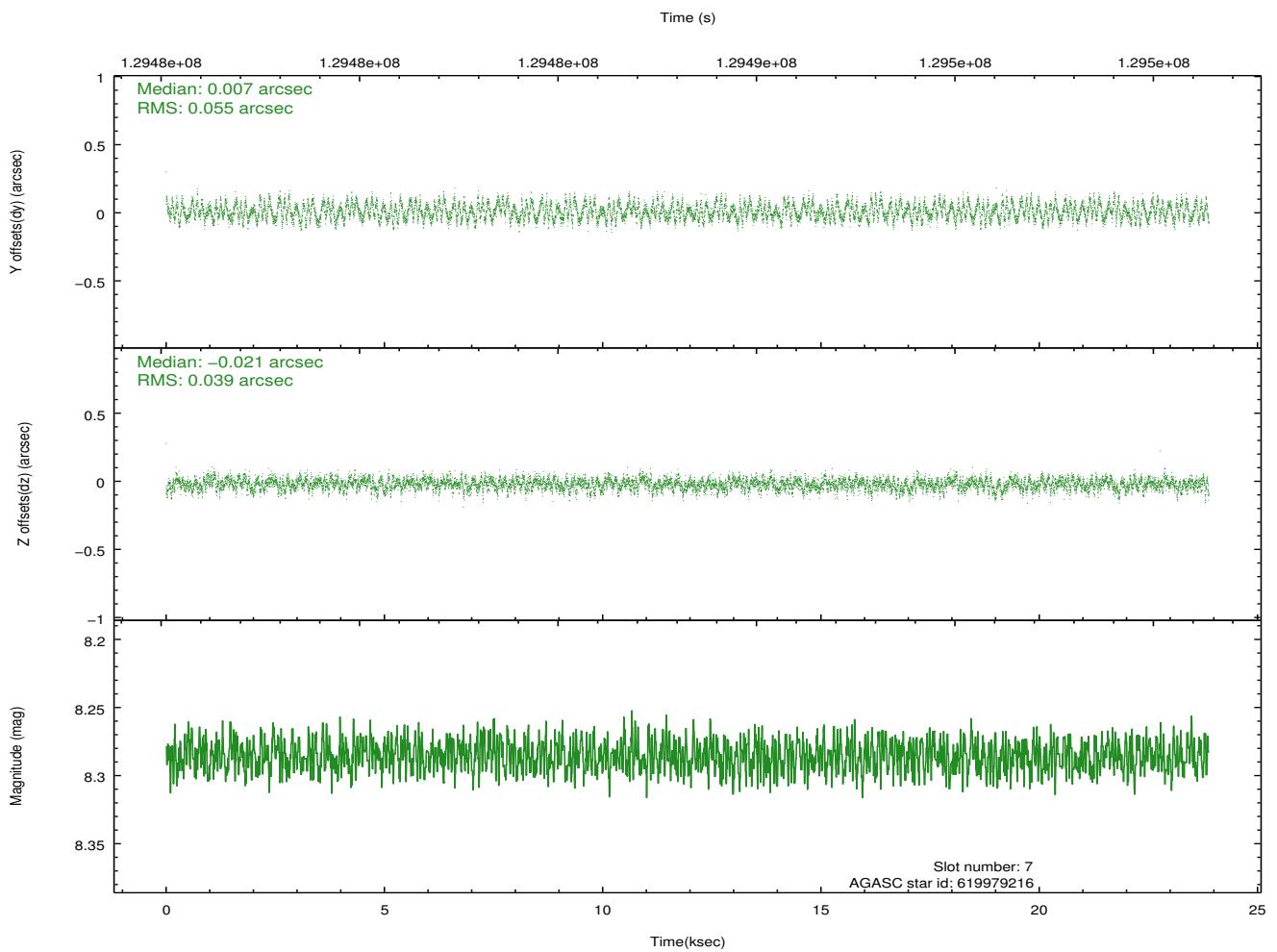
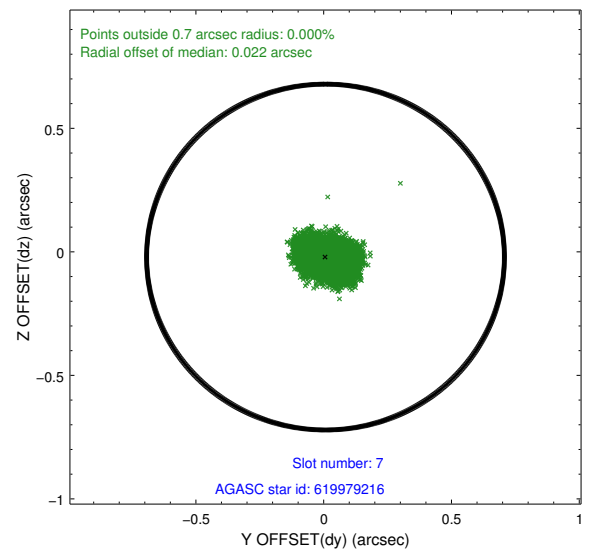
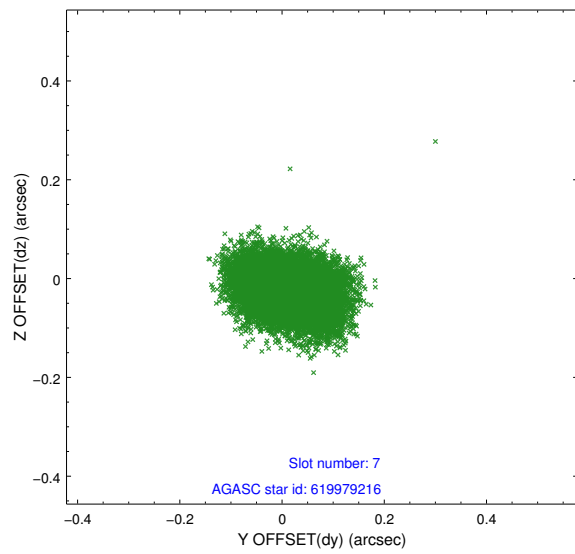
2.4.3 Slot 5



2.4.4 Slot 6

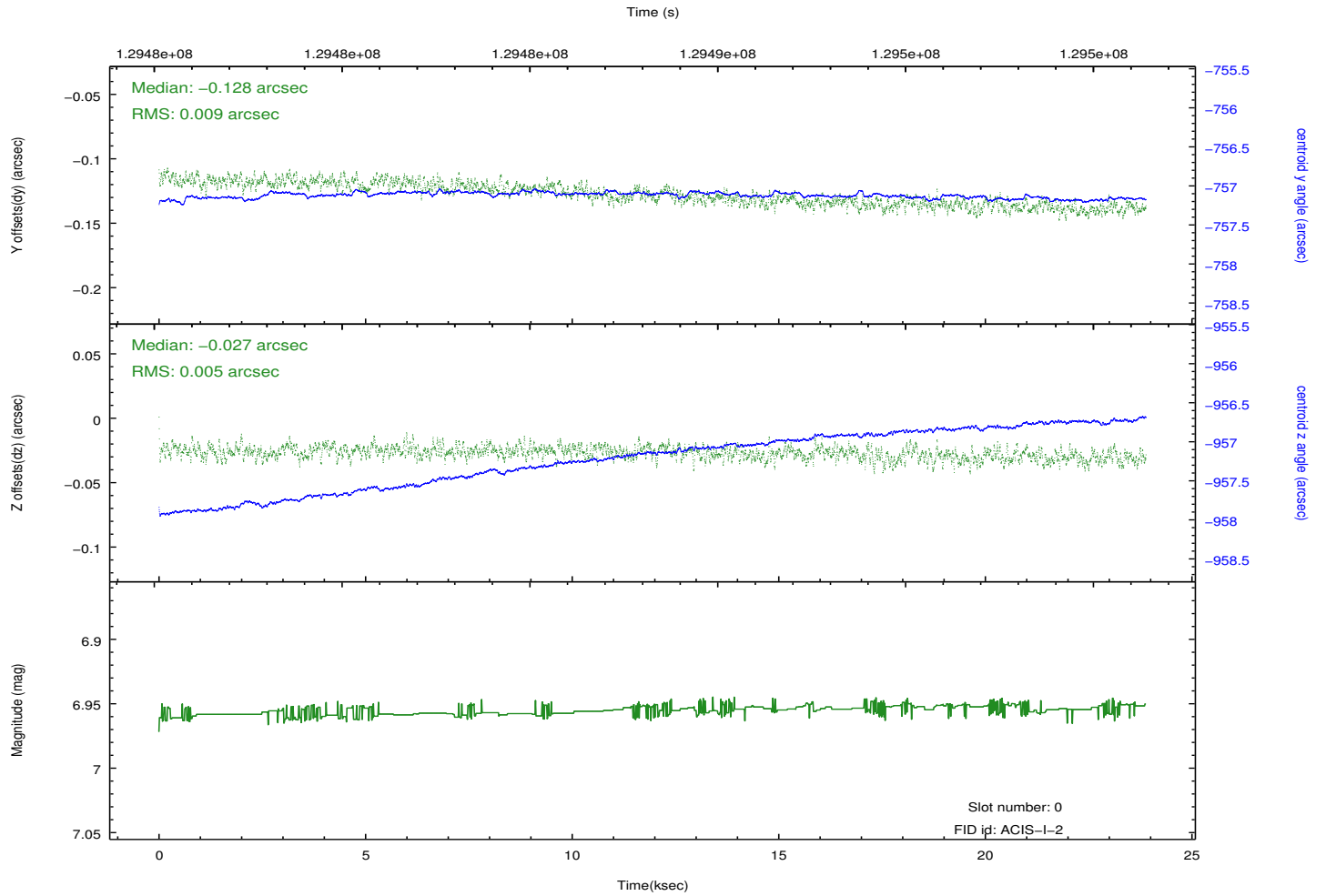
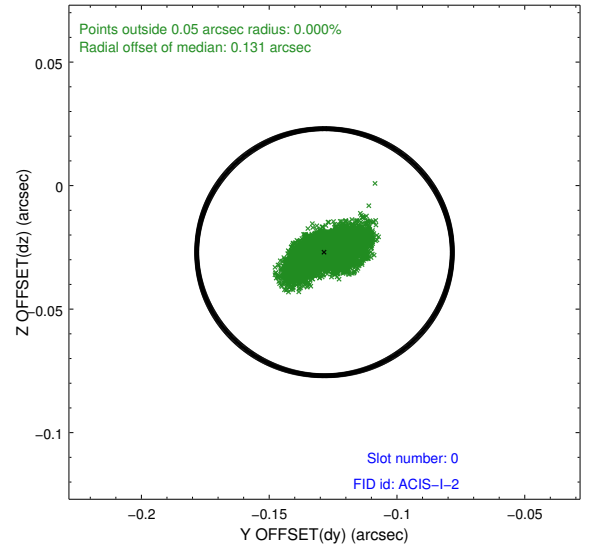
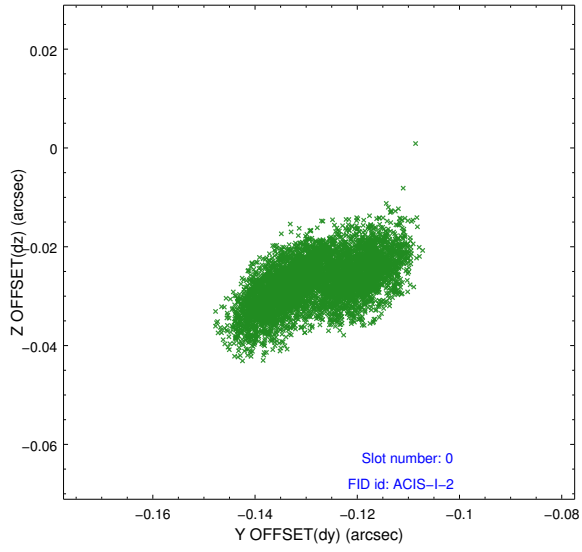


2.4.5 Slot 7

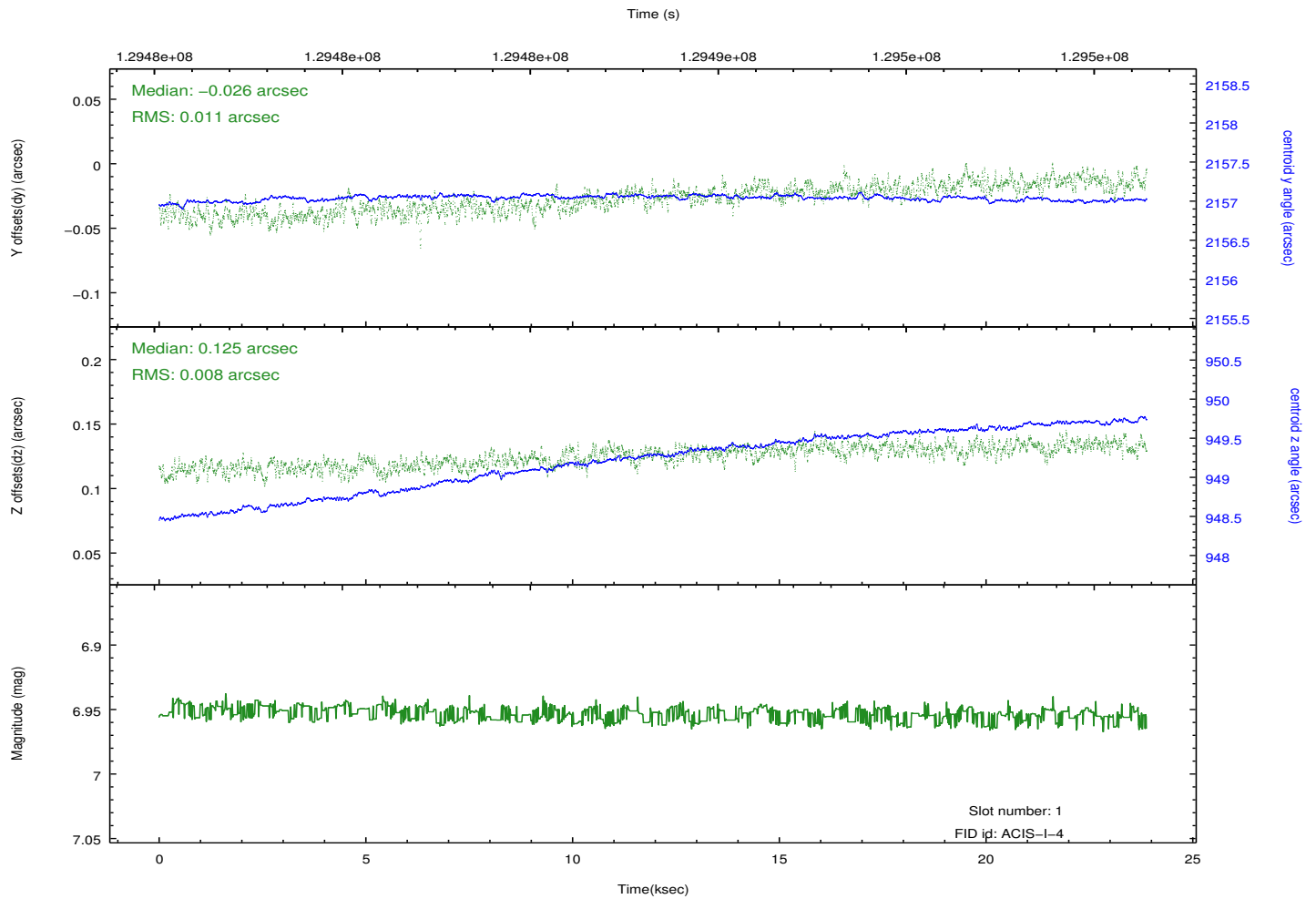
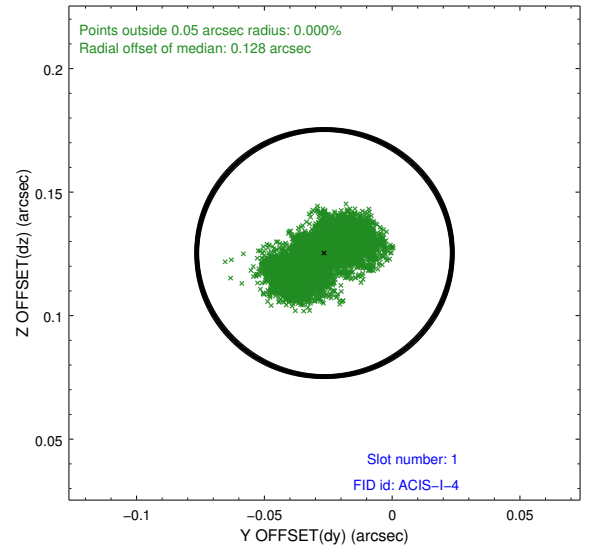
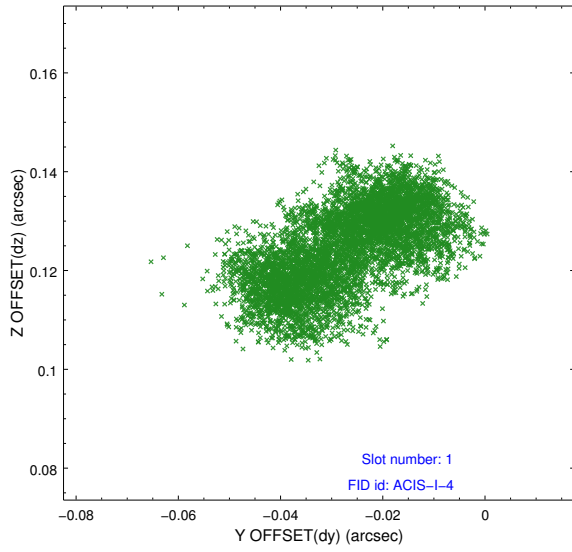


2.5 FID Slots

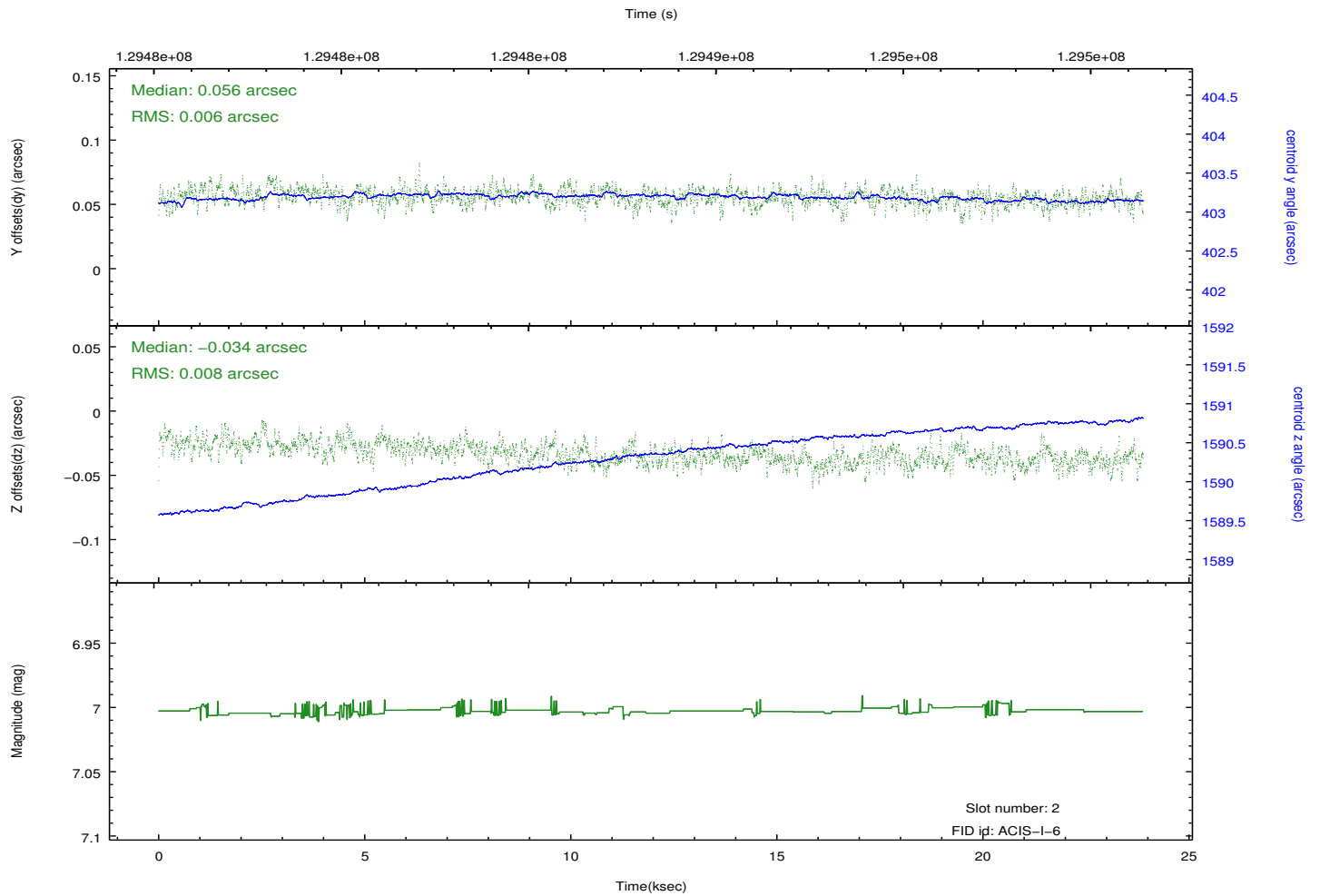
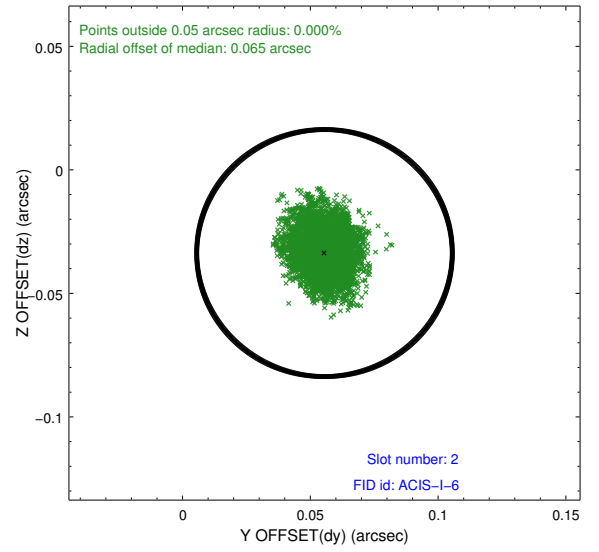
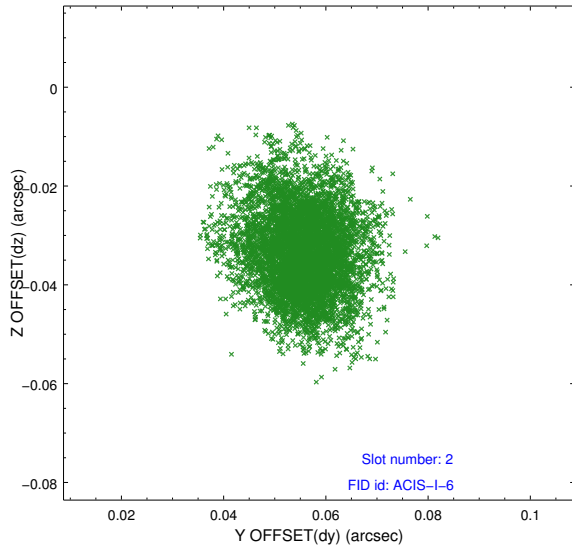
2.5.1 Slot 0



2.5.2 Slot 1



2.5.3 Slot 2



A Summary

A.1 Status

V&V Scientist	Jen Lauer
V&V Date (YYYY-MM-DD)	2012.10.04
V&V Edition	1
V&V Disposition and Status	OK
V&V Charge Time	23.473

A.2 Comments