

V&V Reference Report

L2 ASCDS Version : 8.4.5

Observation 3291 - L2 Version 3
Chandra X-Ray Center

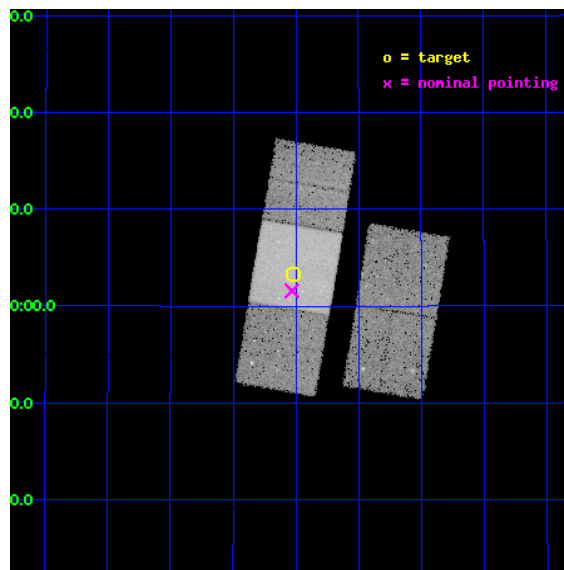
L2 Processing Date : Oct 14 2012

Contents

1	Front	2
2	OBI	3
2.1	OBI	3
2.1.1	Images	3
2.1.2	Bias	3
2.1.3	Parameters	4
2.1.4	Events	4
2.2	Compared Parameters	5
2.3	Aspect	6
2.4	Star Slots	9
2.4.1	Slot 3	9
2.4.2	Slot 4	10
2.4.3	Slot 5	11
2.4.4	Slot 6	12
2.4.5	Slot 7	13
2.5	FID Slots	14
2.5.1	Slot 0	14
2.5.2	Slot 1	15
2.5.3	Slot 2	16
A	Summary	17
A.1	Status	17
A.2	Comments	17

1 Front

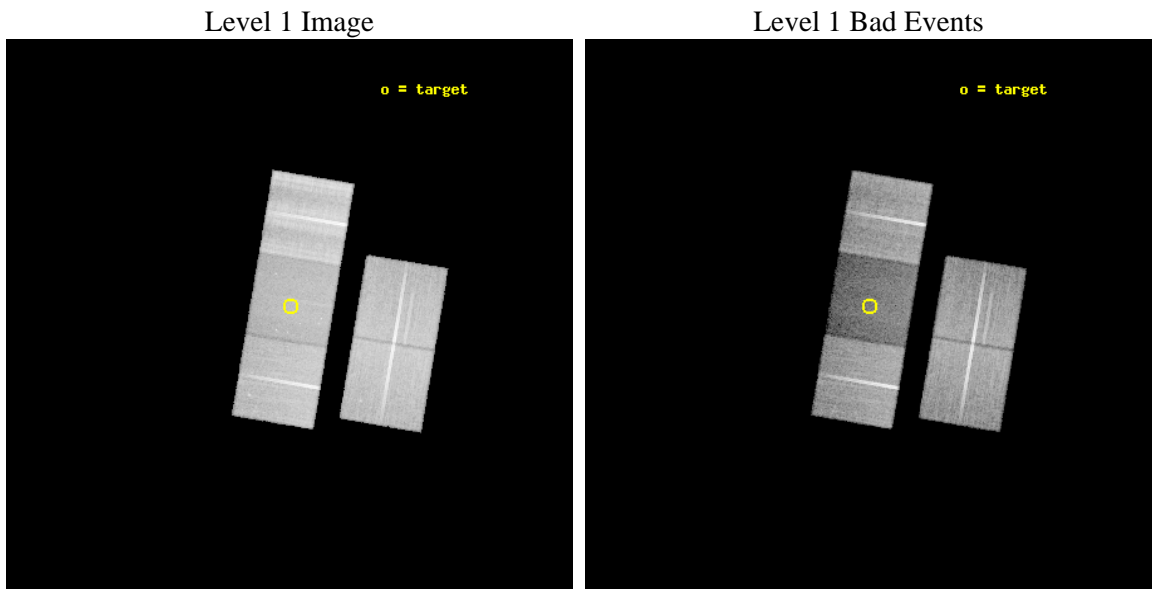
seq_num	800291	Sequence number
obs_id	3291	Observation id
title	MAPPING DARK MATTER IN A COLLING FLOW CLUSTER AND A DARK CLUMP	Pro
observer	Professor Gordon Garmire	Principal investigator
object	RCS1325+2858	Source name
dtcycle	0	
cycle	P	events from which exps? Prim/Second/Both
ra_targ	201.629458	Observer's specified target RA [deg]
dec_targ	29.0555	Observer's specified target Dec [deg]
ra_nom	201.63300425153	Nominal RA [deg]
dec_nom	29.026566129116	Nominal Dec [deg]
roll_nom	279.58490742014	Nominal Roll [deg]
revision	3	Processing version of data
ontime	31315.001060158	Sum of GTIs [s]
livetime	30905.847517539	Livetime [s]
ontime2	31311.695909977	Sum of GTIs [s]
ontime3	31311.778019905	Sum of GTIs [s]
ontime6	31311.819169581	Sum of GTIs [s]
ontime7	31315.001060158	Sum of GTIs [s]
ontime8	31311.73695001	Sum of GTIs [s]
l2events	146569	Number of level 2 events



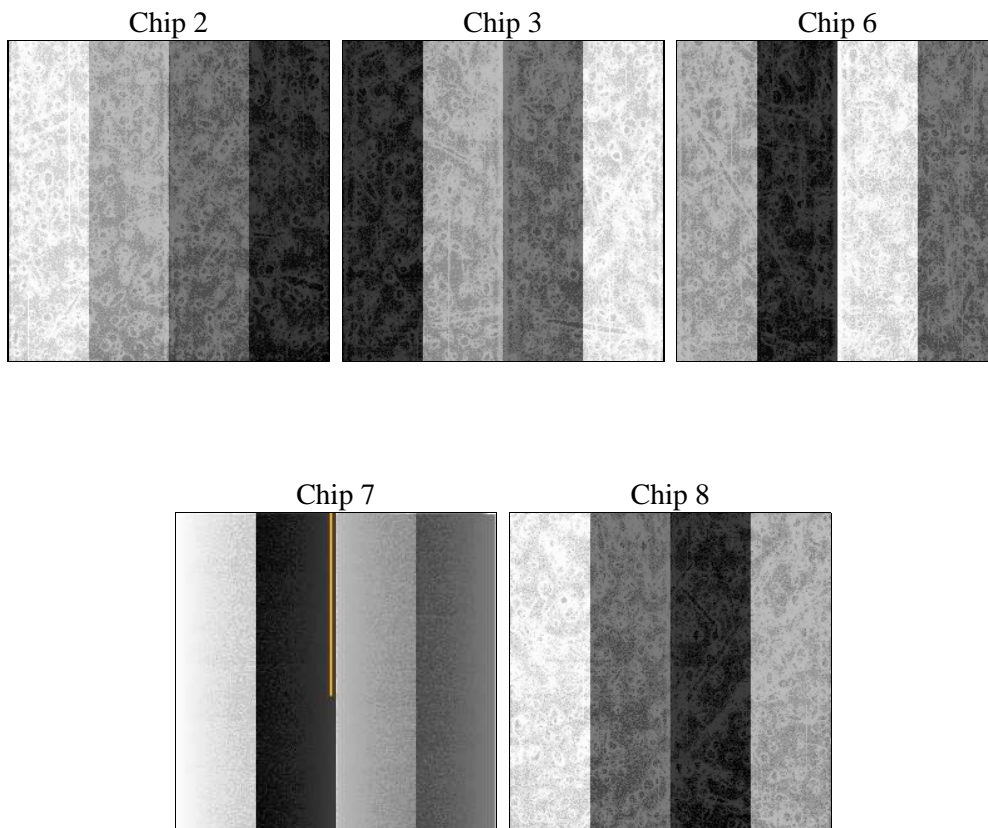
2 OBI

2.1 OBI

2.1.1 Images



2.1.2 Bias



2.1.3 Parameters

obi_num	2	Obi number	sched_exp_time	31217.667000	[s] Scheduled observation exposure time
ascdsver	8.4.5	Processing system revision	ontime	31315.001060158	Sum of GTIs [s]
caldbver	4.5.2	 	ontime2	31311.695909977	Sum of GTIs [s]
date	2012-10-14T01:46:30	Date and time of file creation	ontime3	31311.778019905	Sum of GTIs [s]
revision	3	Processing version of data	ontime6	31311.819169581	Sum of GTIs [s]
			ontime7	31315.001060158	Sum of GTIs [s]
			ontime8	31311.73695001	Sum of GTIs [s]
			l1events	1075126	Number of level 1 events

2.1.4 Events

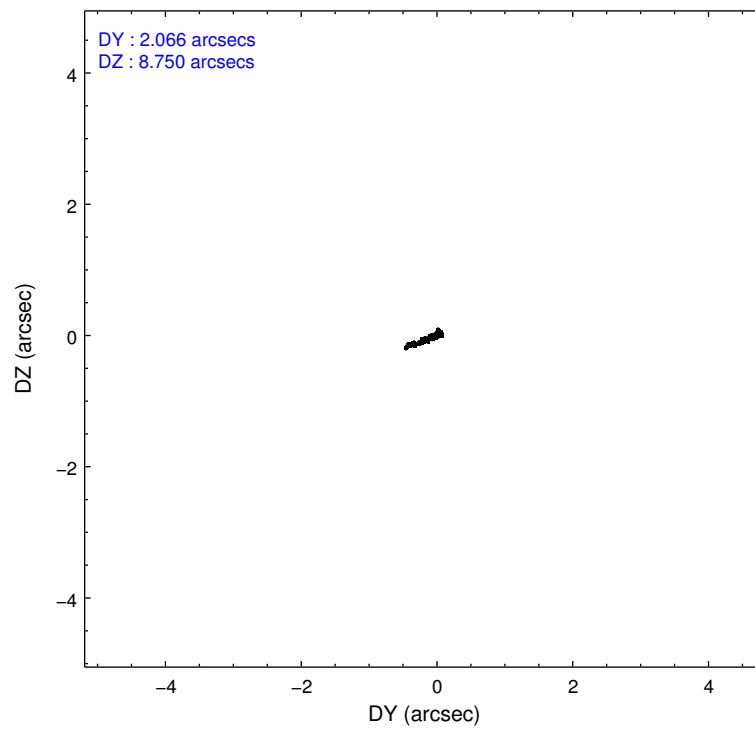
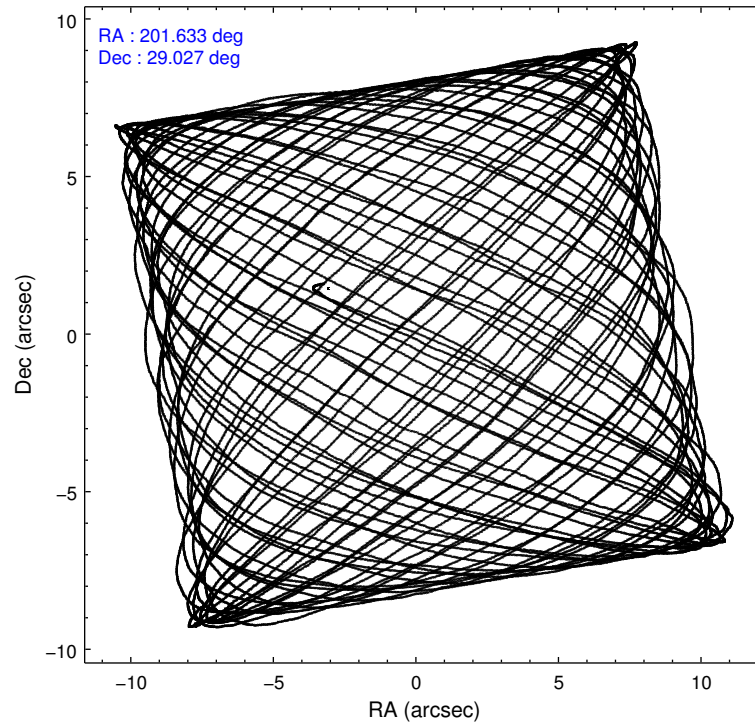
	ccd 2	ccd 3	ccd 6	ccd 7	ccd 8
level 1 events	216811	203755	212746	152260	289554
rejected events	196121	185984	191305	69768	189294
rejected %	90%	91%	89%	45%	65%

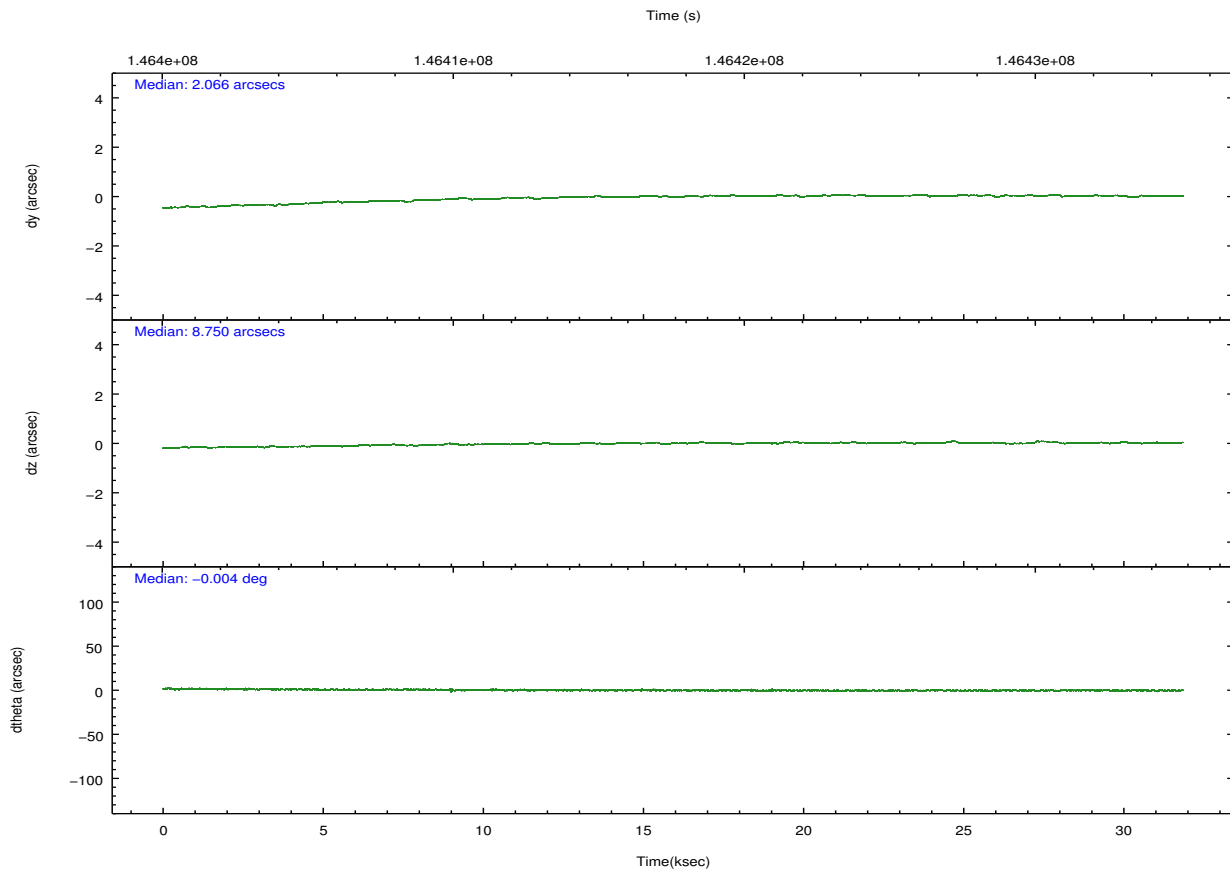
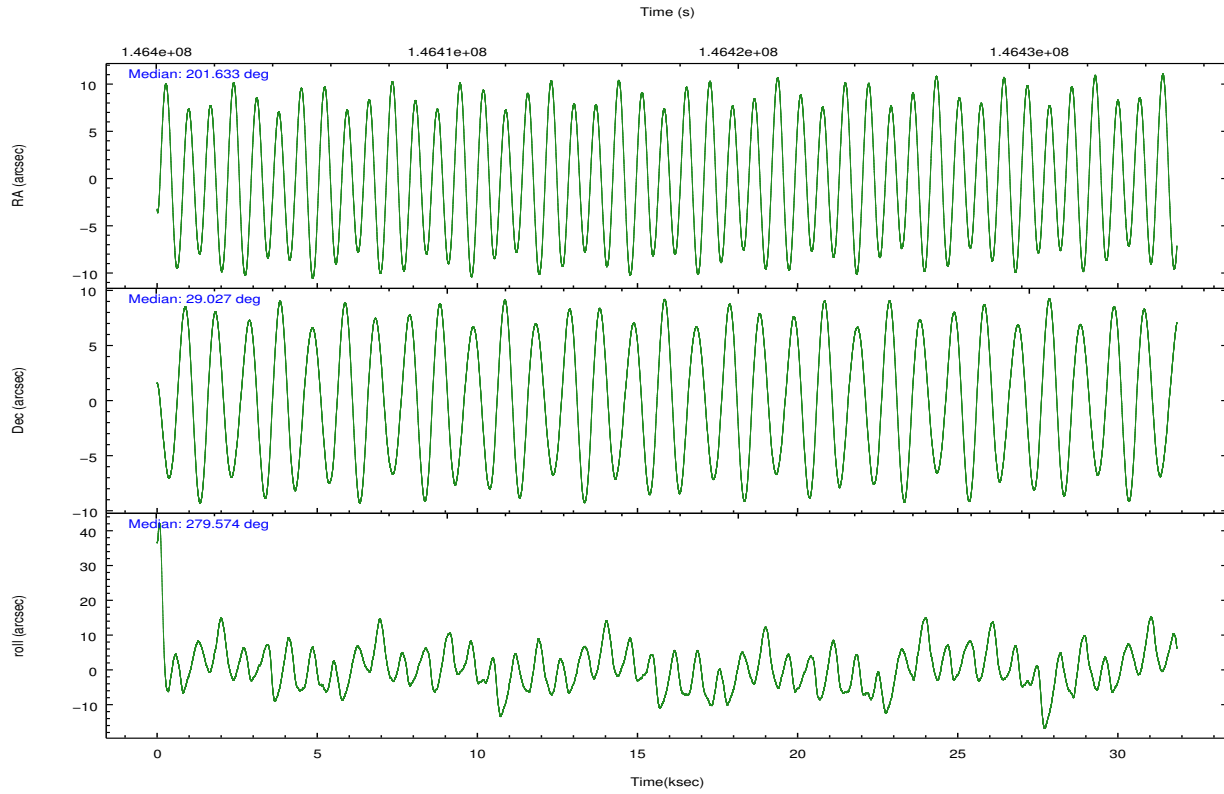
	ccd 2	ccd 3	ccd 6	ccd 7	ccd 8
grade 0 events	8904	7397	9091	9135	30356
	4%	3%	4%	5%	10%
grade 1 events	105	101	98	182	247
	0%	0%	0%	0%	0%
grade 2 events	4620	3483	4461	17970	18281
	2%	1%	2%	11%	6%
grade 3 events	2001	2018	2147	8329	14588
	0%	0%	1%	5%	5%
grade 4 events	2189	1897	2115	8080	13027
	1%	0%	0%	5%	4%
grade 5 events	3846	4667	4823	15133	7879
	1%	2%	2%	9%	2%
grade 6 events	2977	2978	3628	38984	24011
	1%	1%	1%	25%	8%
grade 7 events	192169	181214	186383	54447	181165
	88%	88%	87%	35%	62%

2.2 Compared Parameters

Parameter	Planned	Actual	Parameter	Planned	Actual
Instrument	ACIS	ACIS	Obspar format version number	7	7
Detector	ACIS-23678	ACIS-23678	Obspar file type	PREDICTED	ACTUAL
Grating	NONE	NONE	Obspar update status	NONE	UPDATED
Data mode	VFAINT	VFAINT	Number of optional ACIS chips dropped	0	0
Observation mode	POINTING	POINTING	On-chip summing requested	N	N
[deg] Pointing RA	201.612845	201.6330042515253	Subarray requested	NONE	NONE
[deg] Pointing Dec	29.047343	29.02656612911579	Alternating exposures requested	N	N
[deg] Pointing Roll	279.438068	279.5849074201443	[s] Primary exposure time	0.000000	3.1
[mm] SIM focus pos	-0.684267	-0.6828225247311905			
[mm] SIM defocus	0	0.001444936568705701			
[mm] SIM translation stage pos	-190.132523	-190.1425803651734			
[mm] SIM translation stage offset	0	0.01005778216563158			
[s] Observation start time (MET)	146402258.184000	146401076.15784			
Observation start date	2002-08-22T11:16:34	2002-08-22T10:57:56			
[s] Observation end time (MET)	146433476.184000	146433790.57169			
Observation end date	2002-08-22T19:56:52	2002-08-22T20:03:10			
Read mode	TIMED	TIMED			

2.3 Aspect



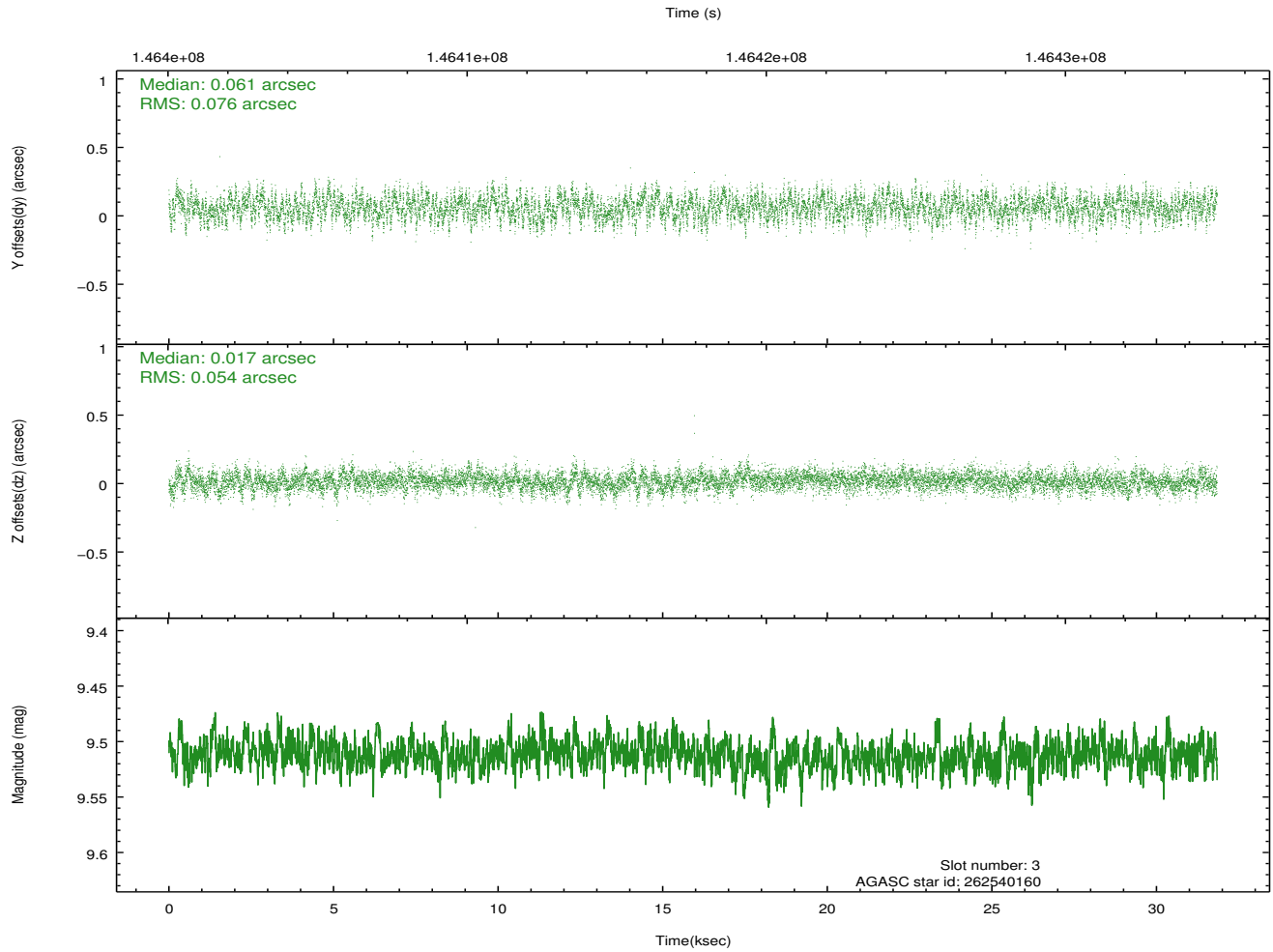
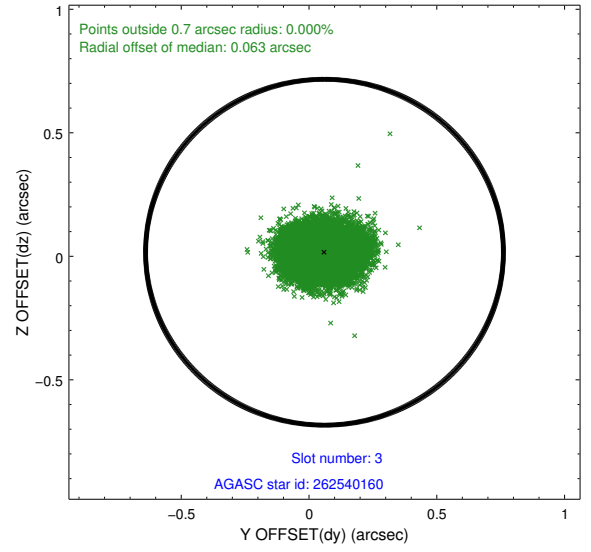
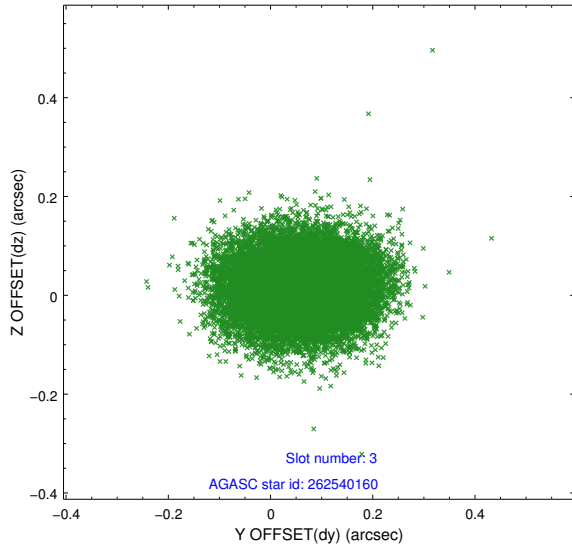


Slot Statistics

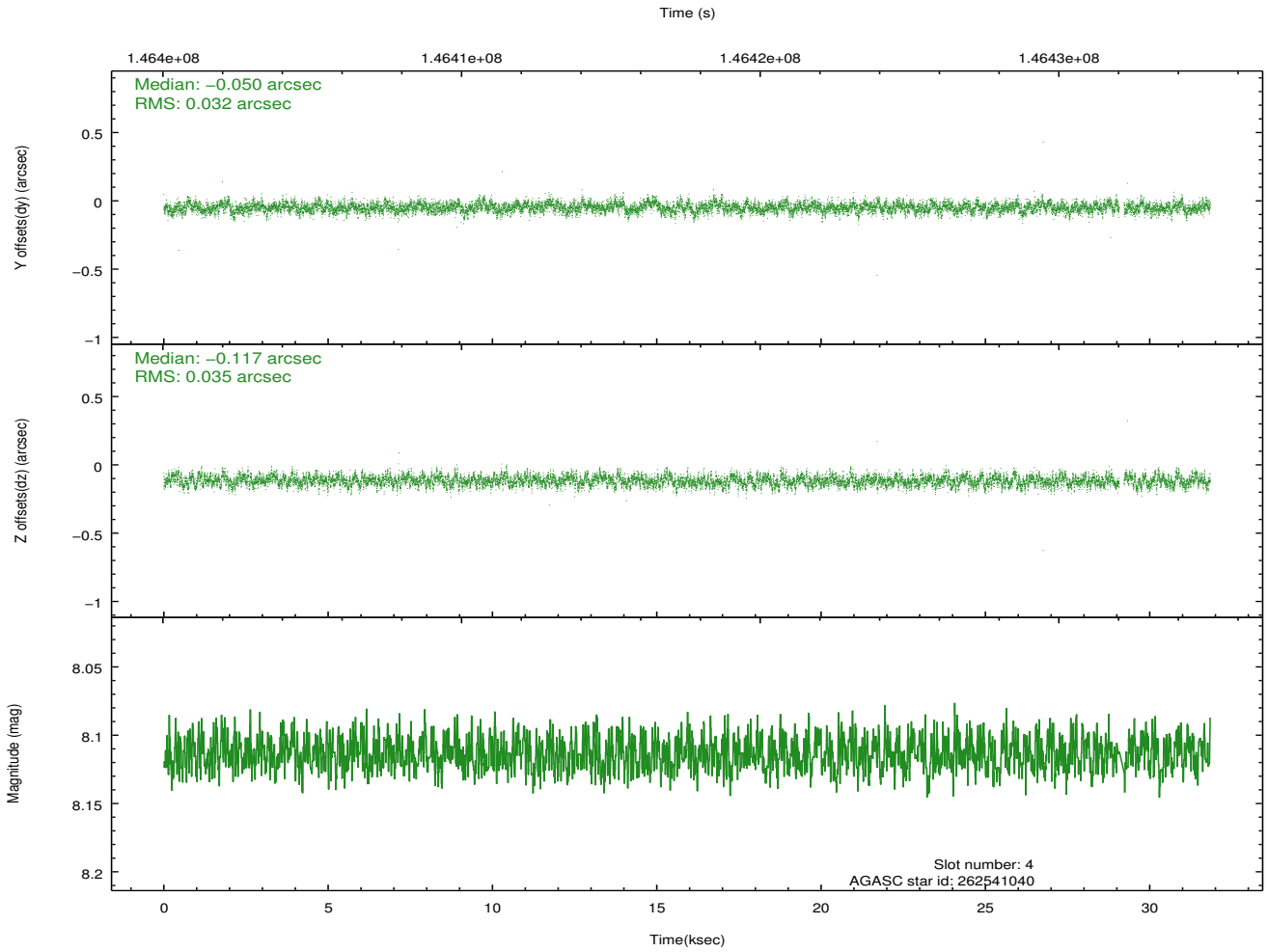
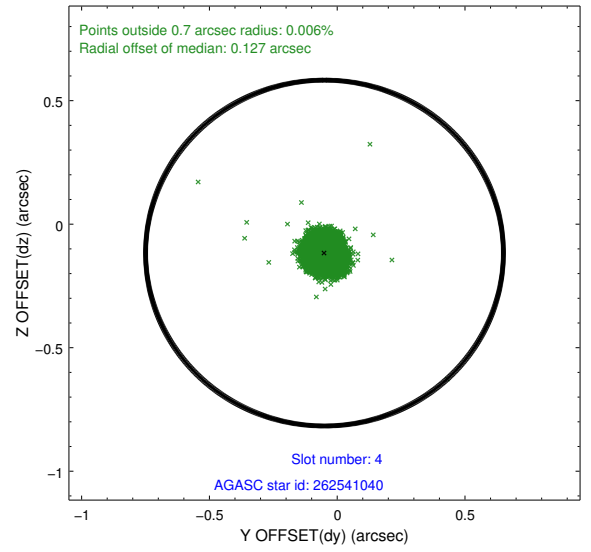
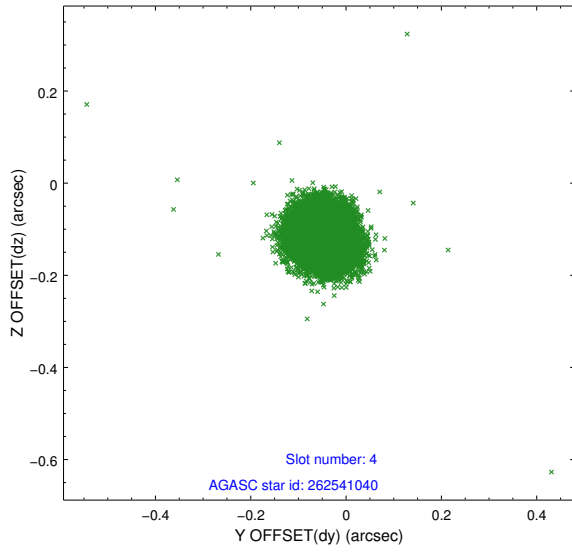
slot	status	id	mag	n_pts	med_dy	med_dz	dr1	dr2	ra	dec	mean_y	mean_z
0	FID	ACIS-S-2	7.10	7767	-0.030	-0.011	0.007	0.011	0.000000	0.000000	-754.65	-1729.89
1	FID	ACIS-S-4	7.20	7767	-0.010	0.017	0.006	0.010	0.000000	0.000000	2158.63	178.54
2	FID	ACIS-S-5	7.23	7766	0.008	0.003	0.007	0.011	0.000000	0.000000	-1807.36	172.29
3	GUIDE	262540160	9.51	15521	0.061	0.017	0.100	0.161	202.451747	28.646358	1849.81	2378.88
4	GUIDE	262541040	8.11	15461	-0.050	-0.117	0.050	0.080	201.795177	28.874292	709.08	464.17
5	GUIDE	262541520	9.89	15444	0.165	0.004	0.127	0.201	202.020350	28.446195	2345.02	917.58
6	GUIDE	262543840	10.22	15406	-0.095	-0.020	0.121	0.196	201.181001	29.472362	-1732.73	-1085.06
7	GUIDE	262545664	8.43	15529	-0.082	0.115	0.058	0.094	202.163719	28.448585	2408.82	1366.62

2.4 Star Slots

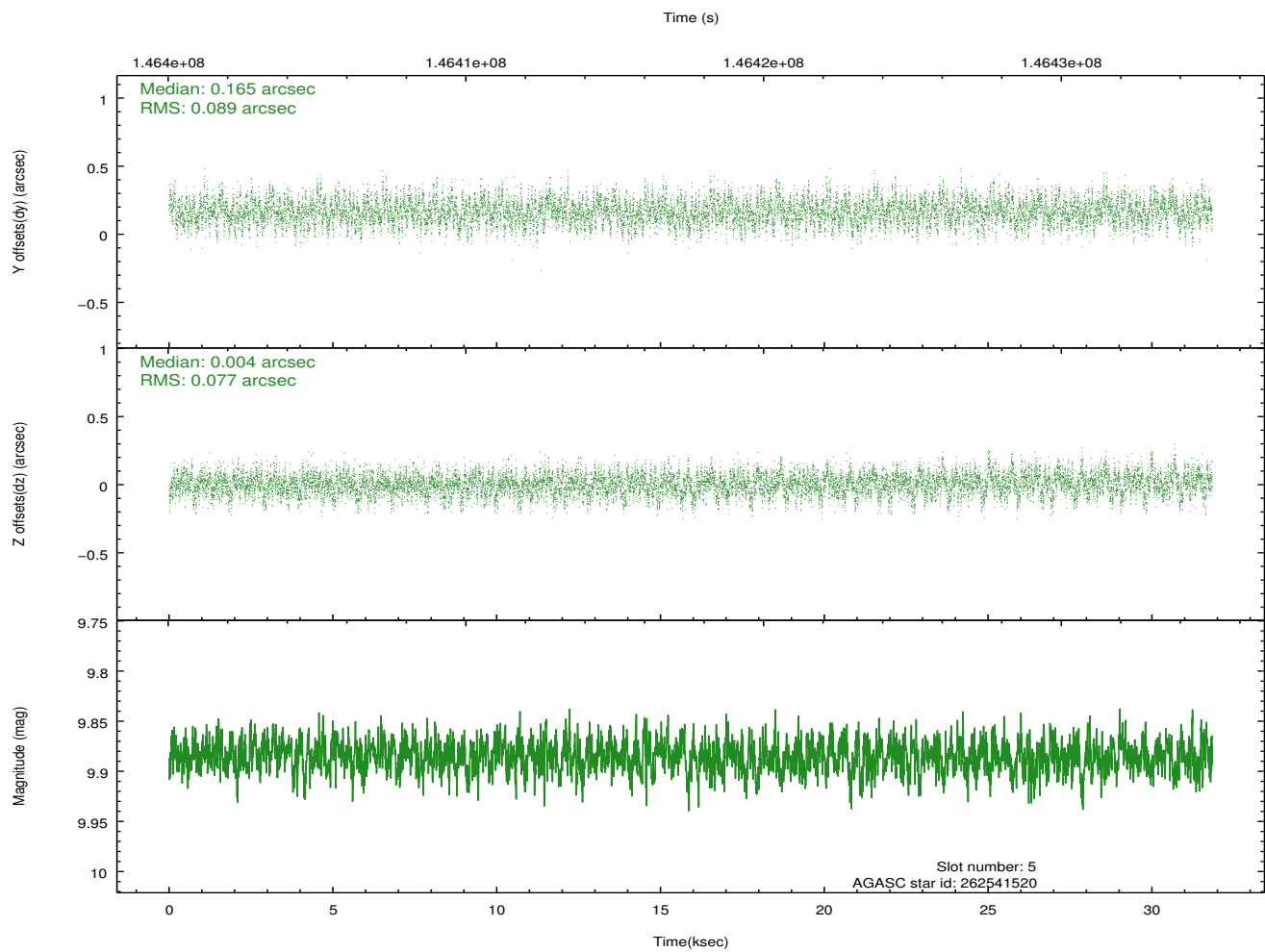
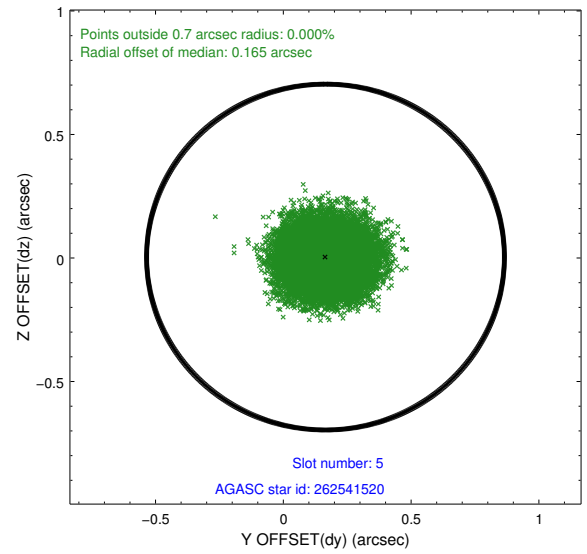
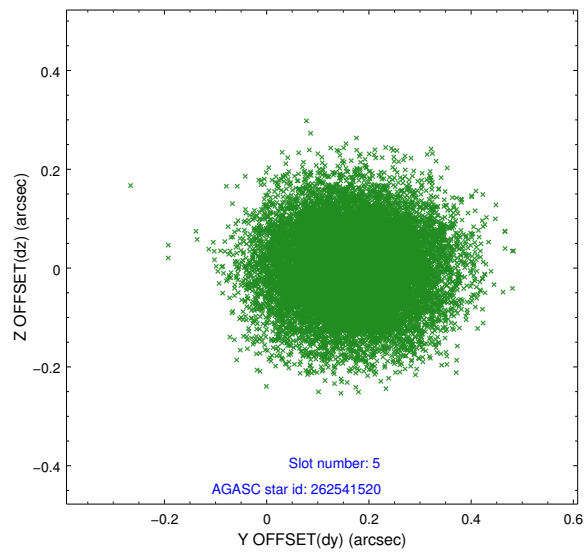
2.4.1 Slot 3



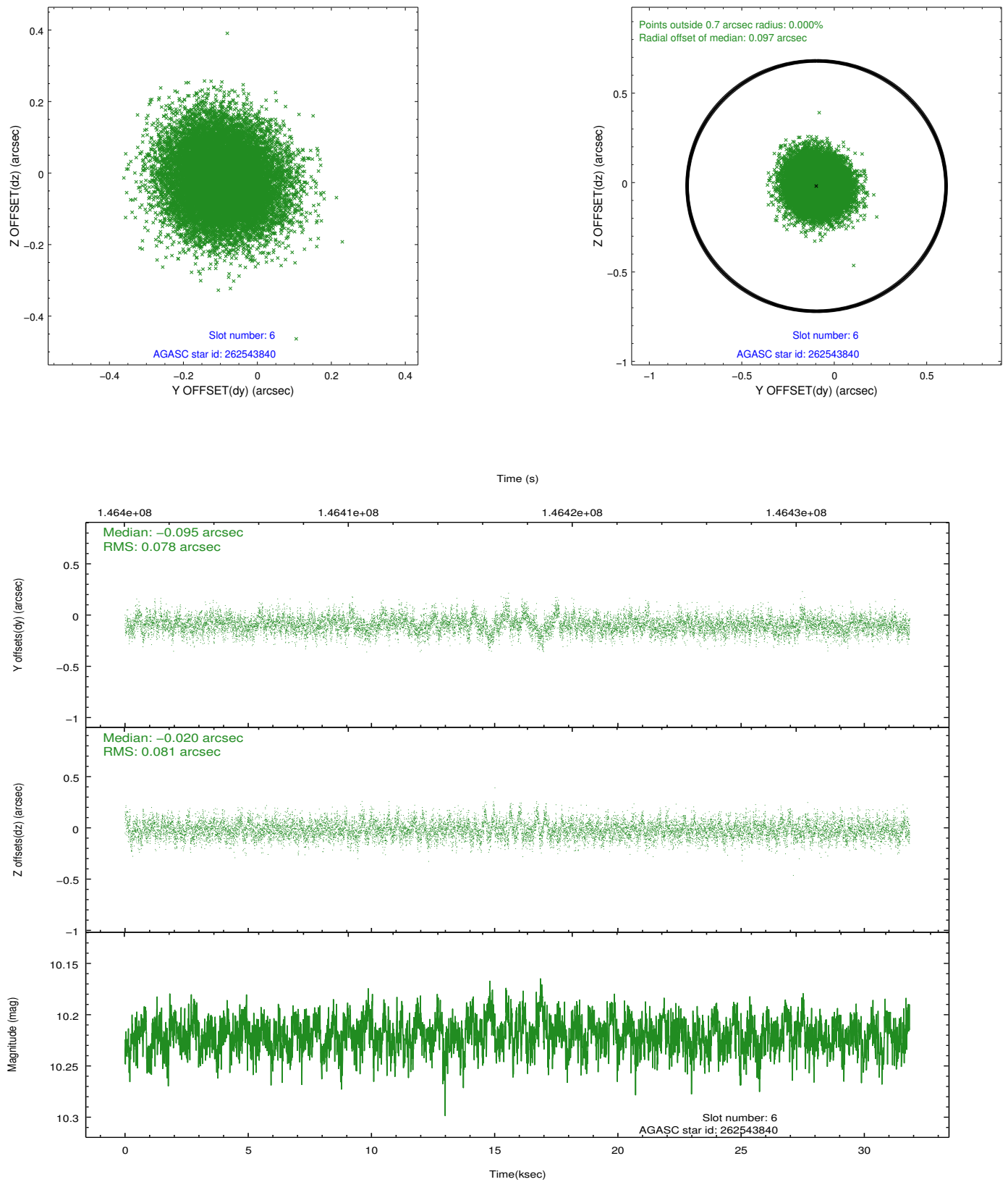
2.4.2 Slot 4



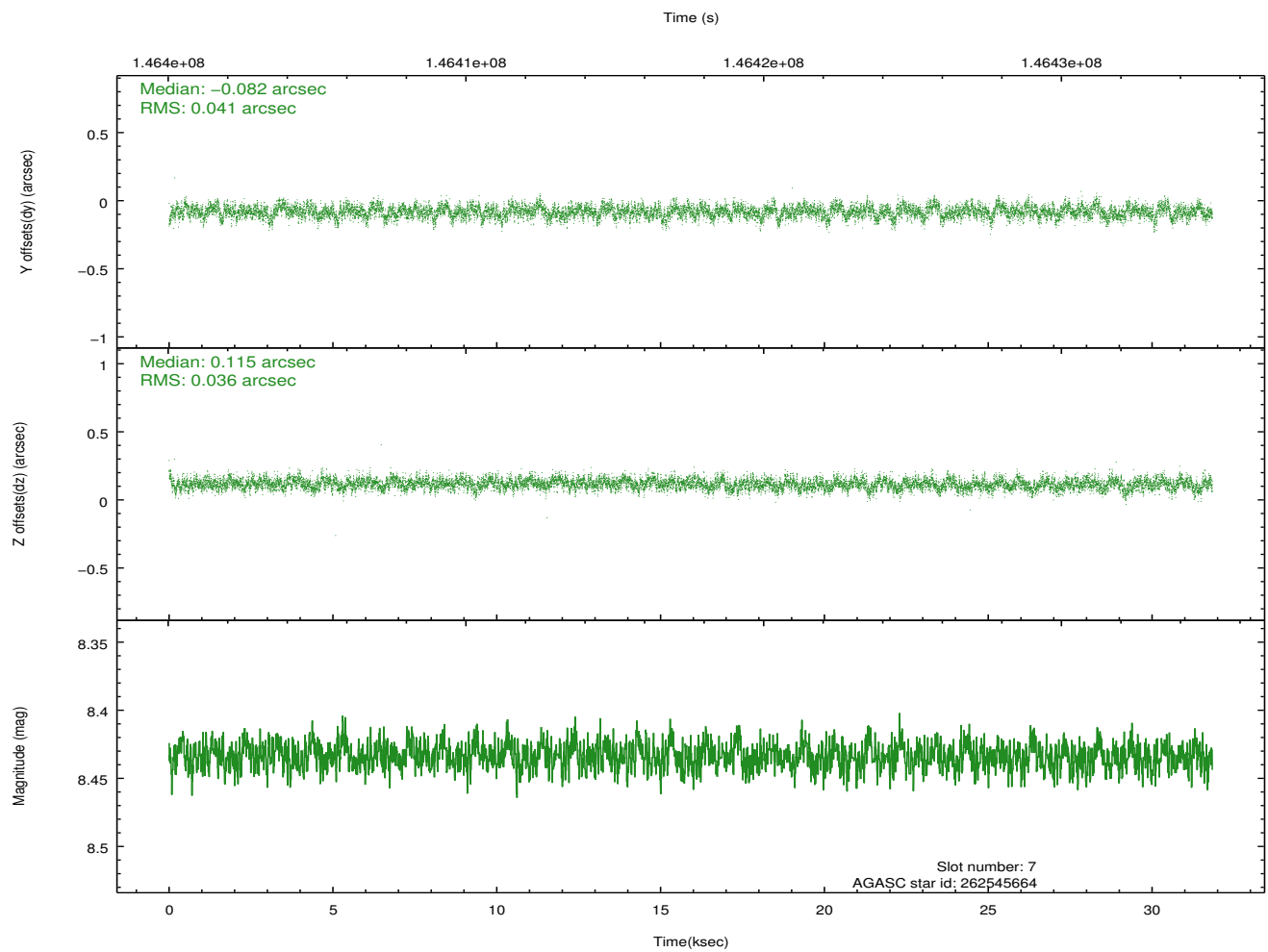
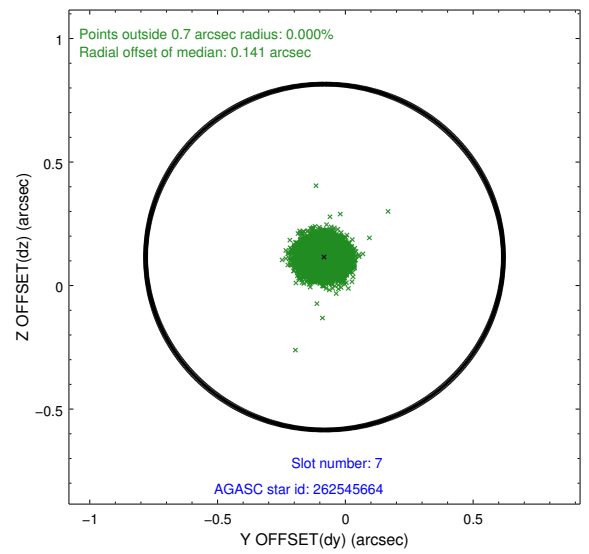
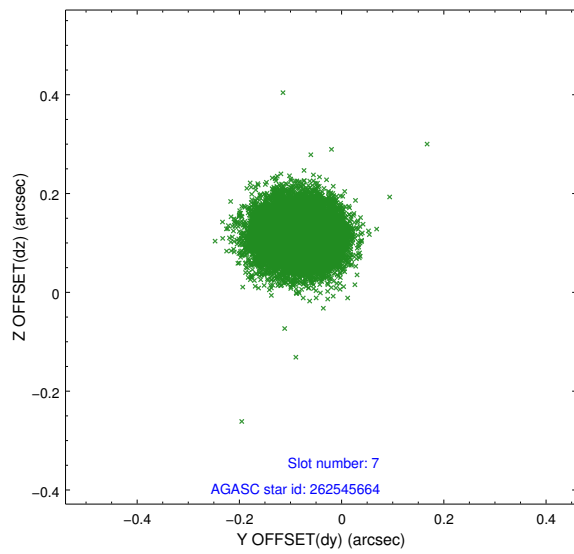
2.4.3 Slot 5



2.4.4 Slot 6

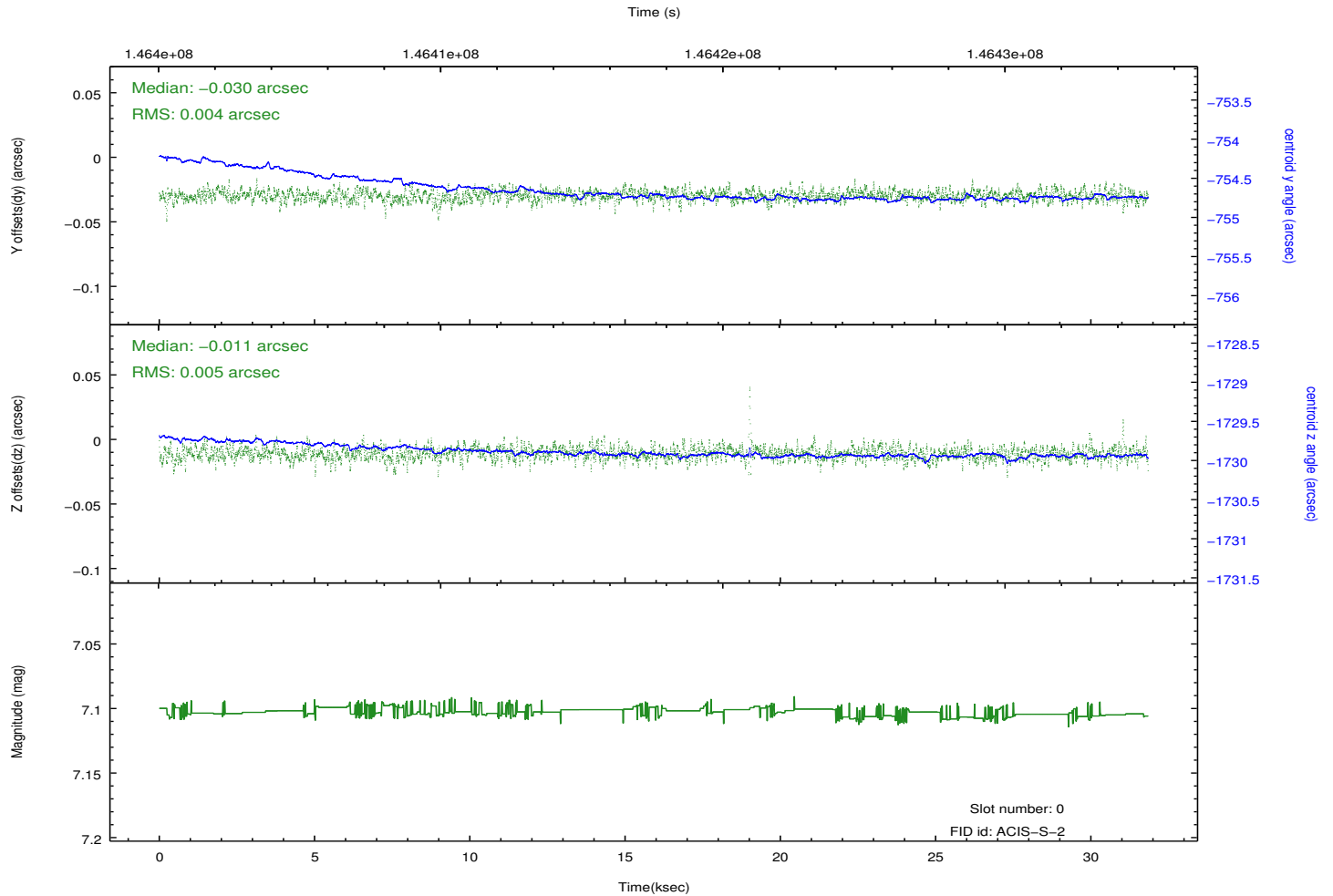
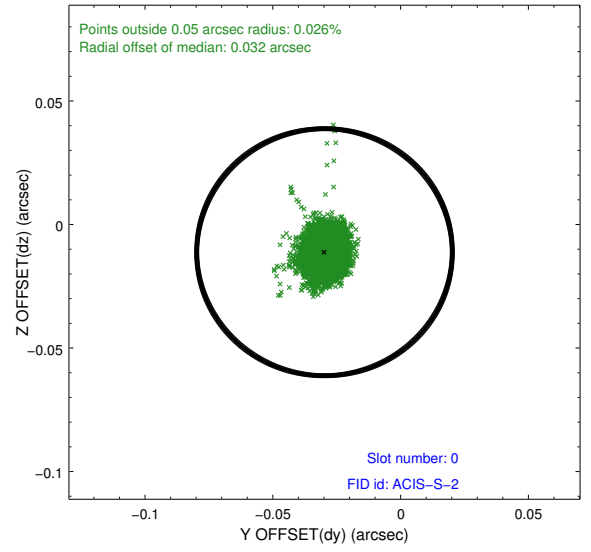
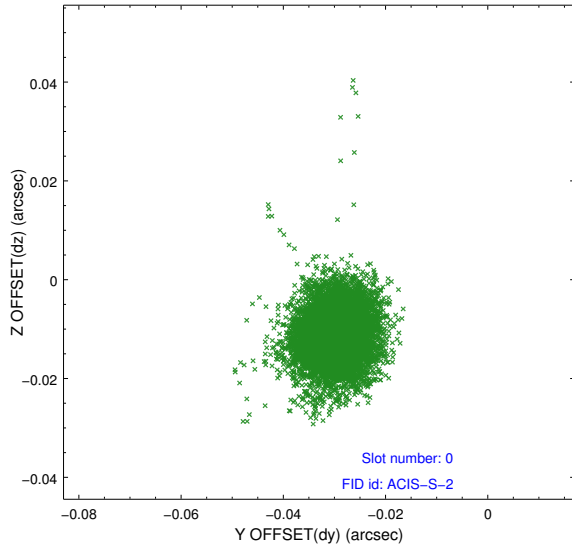


2.4.5 Slot 7

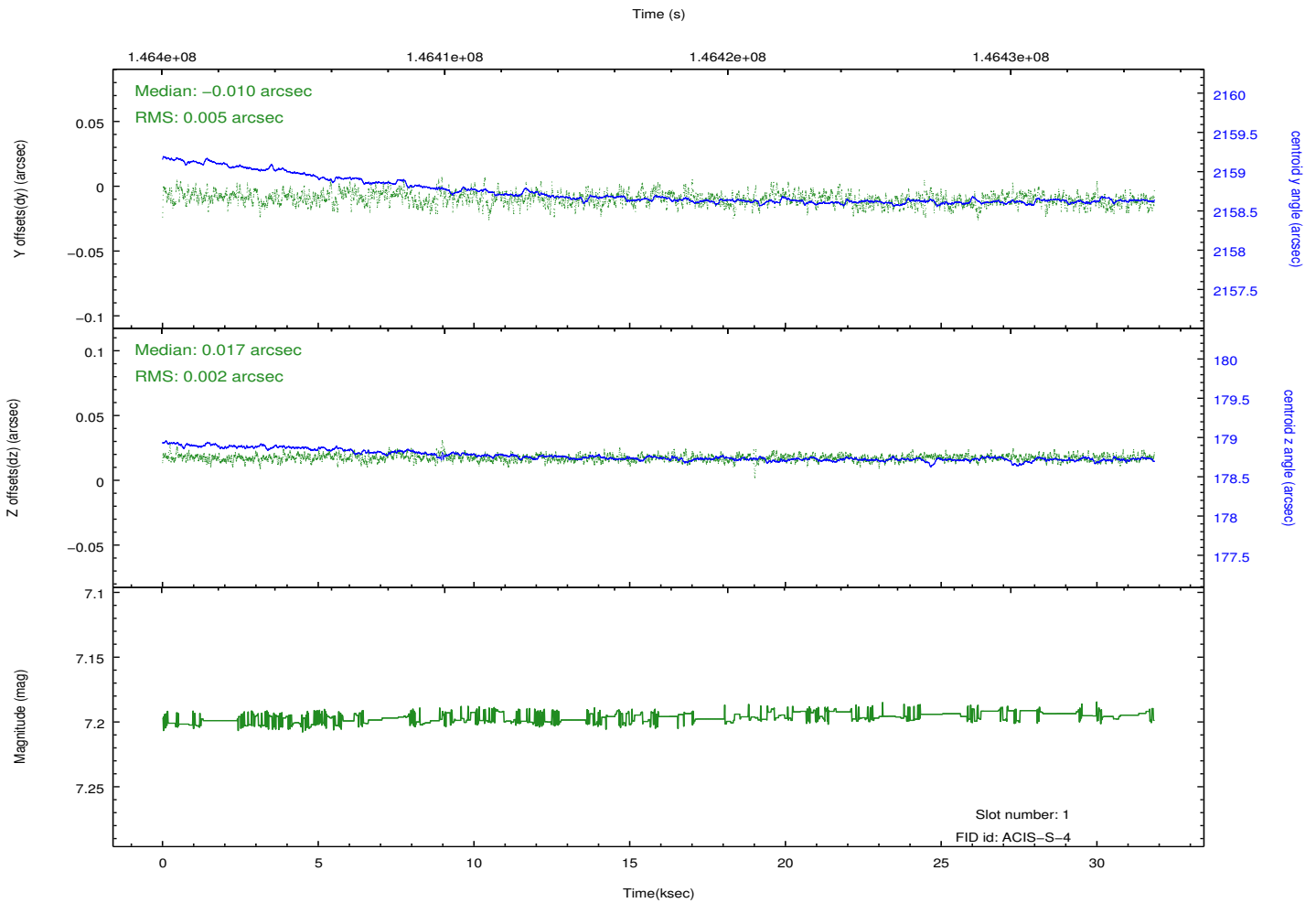
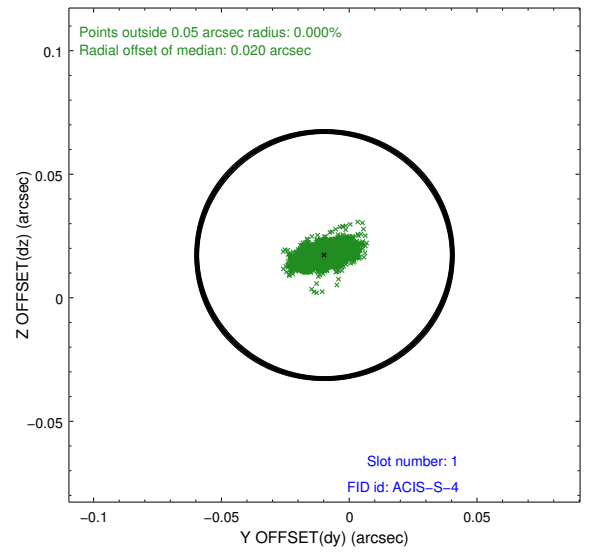
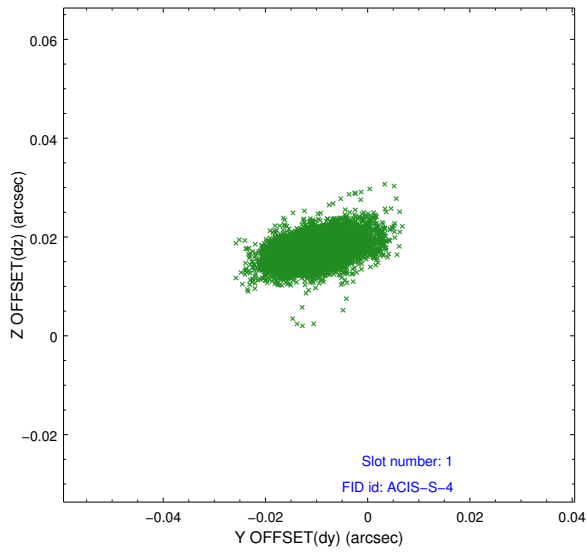


2.5 FID Slots

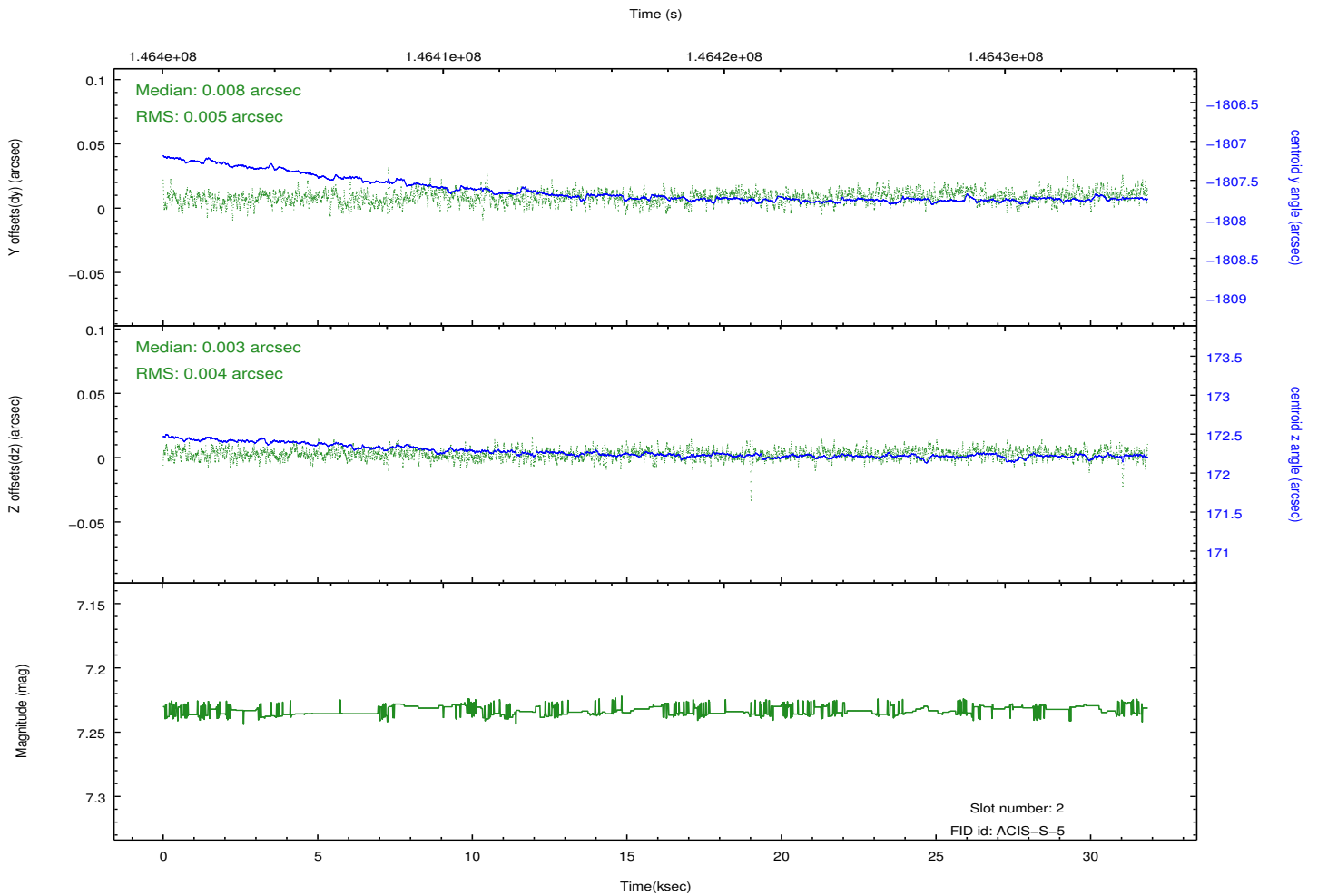
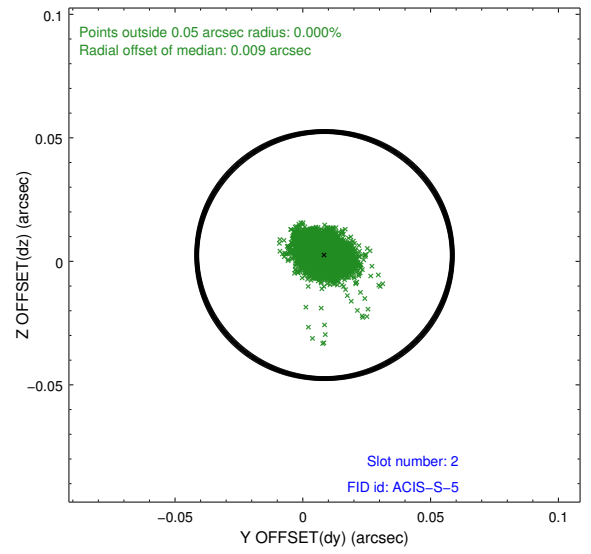
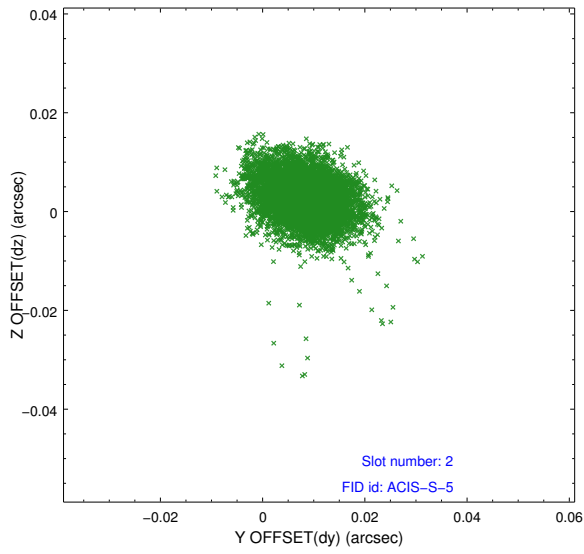
2.5.1 Slot 0



2.5.2 Slot 1



2.5.3 Slot 2



A Summary

A.1 Status

V&V Scientist	Beth Sundheim
V&V Date (YYYY-MM-DD)	2012.10.23
V&V Edition	1
V&V Disposition and Status	OK
V&V Charge Time	31.316

A.2 Comments