

V&V Reference Report

L2 ASCDS Version : 8.4.5

Observation 3411 - L2 Version 3
Chandra X-Ray Center

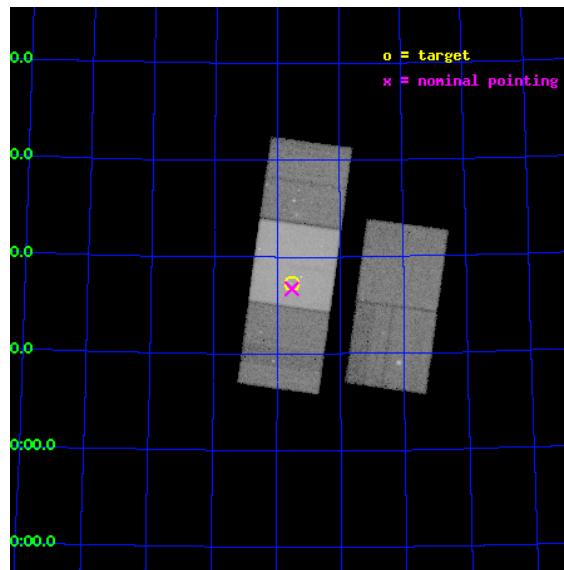
L2 Processing Date : Sep 27 2012

Contents

1	Front	2
2	OBI	3
2.1	OBI	3
2.1.1	Images	3
2.1.2	Bias	3
2.1.3	Parameters	4
2.1.4	Events	4
2.2	Compared Parameters	5
2.3	Aspect	6
2.4	Star Slots	9
2.4.1	Slot 3	9
2.4.2	Slot 4	10
2.4.3	Slot 5	11
2.4.4	Slot 6	12
2.4.5	Slot 7	13
2.5	FID Slots	14
2.5.1	Slot 0	14
2.5.2	Slot 1	15
2.5.3	Slot 2	16
A	Summary	17
A.1	Status	17
A.2	Comments	17

1 Front

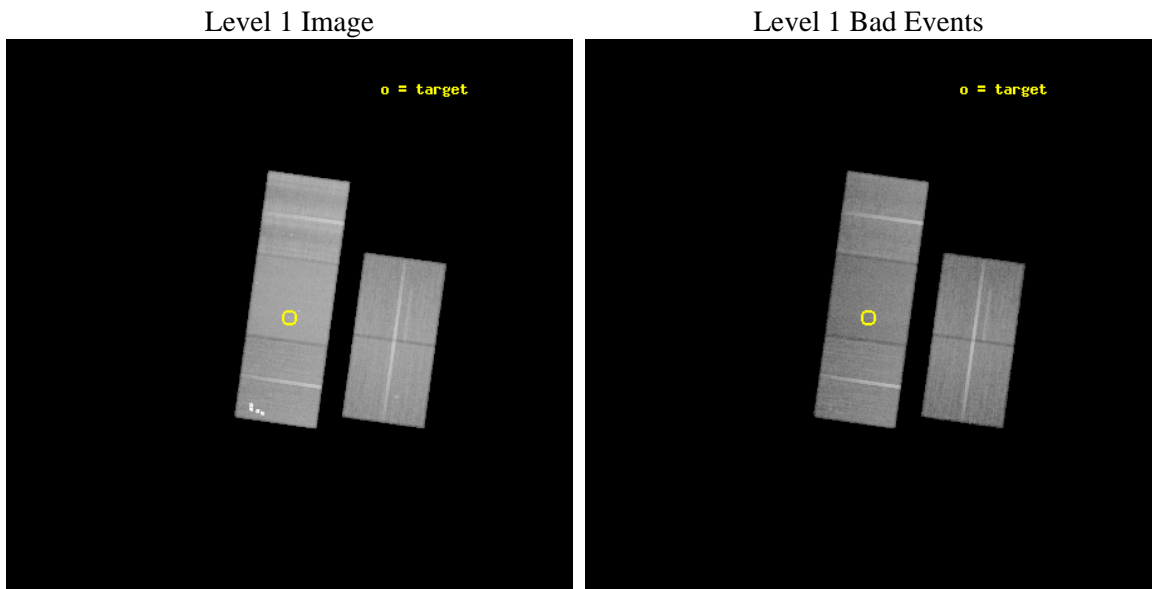
seq_num	100031	Sequence number
obs_id	3411	Observation id
title	X-RAY OBSERVATIONS OF THE FIRST COUNTERPART TO A FAST X-RAY TRANSIENT, XRF010930	Proposal title
observer	Prof. Fiona Harrison	Principal investigator
object	FXRT011030	Source name
dtcycle	0	
cycle	P	events from which exps? Prim/Second/Both
ra_targ	310.884583	Observer's specified target RA [deg]
dec_targ	77.288583	Observer's specified target Dec [deg]
ra_nom	310.88275470844	Nominal RA [deg]
dec_nom	77.278853093088	Nominal Dec [deg]
roll_nom	277.85249715363	Nominal Roll [deg]
revision	3	Processing version of data
ontime	47206.400043949	Sum of GTIs [s]
livetime	46608.644182311	Livetime [s]
ontime2	47206.400043949	Sum of GTIs [s]
ontime3	47203.159053788	Sum of GTIs [s]
ontime6	47203.159083694	Sum of GTIs [s]
ontime7	47206.400043949	Sum of GTIs [s]
ontime8	47206.400043949	Sum of GTIs [s]
l2events	392433	Number of level 2 events



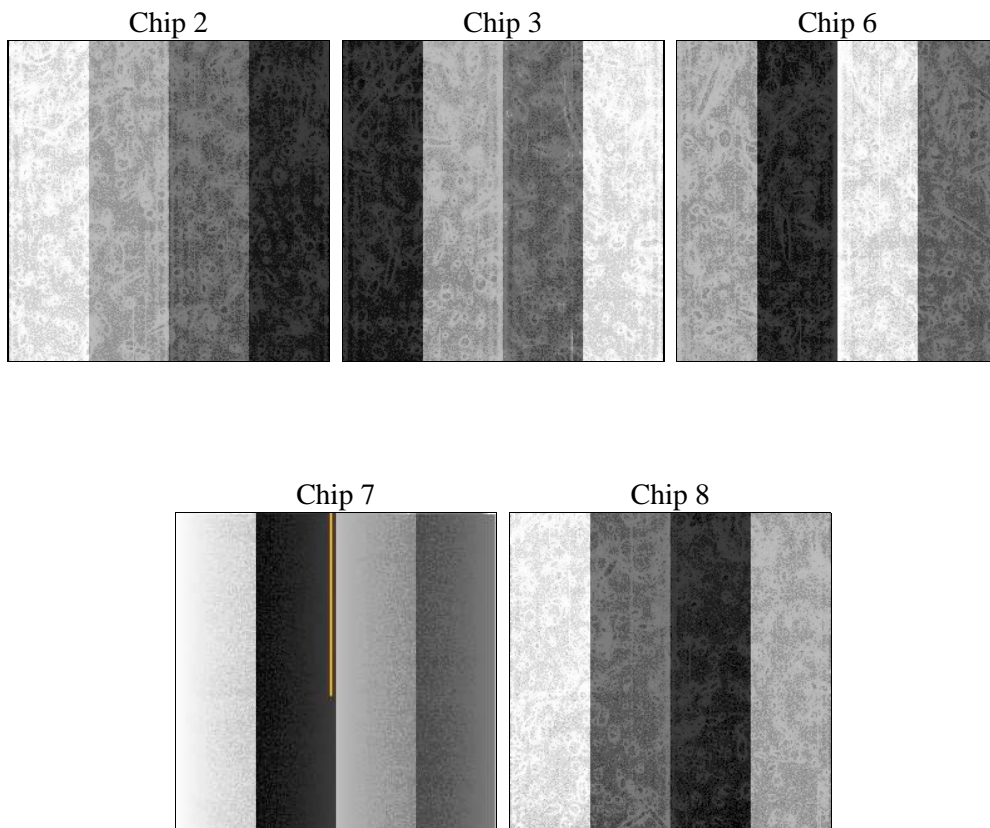
2 OBI

2.1 OBI

2.1.1 Images



2.1.2 Bias



2.1.3 Parameters

obi_num	0	Obi number	sched_exp_time	47110.738000	[s] Scheduled observation exposure time
ascdsver	8.4.5	Processing system revision	ontime	47206.400043949	Sum of GTIs [s]
caldbver	4.5.1.1	 	ontime2	47206.400043949	Sum of GTIs [s]
date	2012-09-27T02:08:57	Date and time of file creation	ontime3	47203.159053788	Sum of GTIs [s]
revision	3	Processing version of data	ontime6	47203.159083694	Sum of GTIs [s]
			ontime7	47206.400043949	Sum of GTIs [s]
			ontime8	47206.400043949	Sum of GTIs [s]
			l1events	1936265	Number of level 1 events

2.1.4 Events

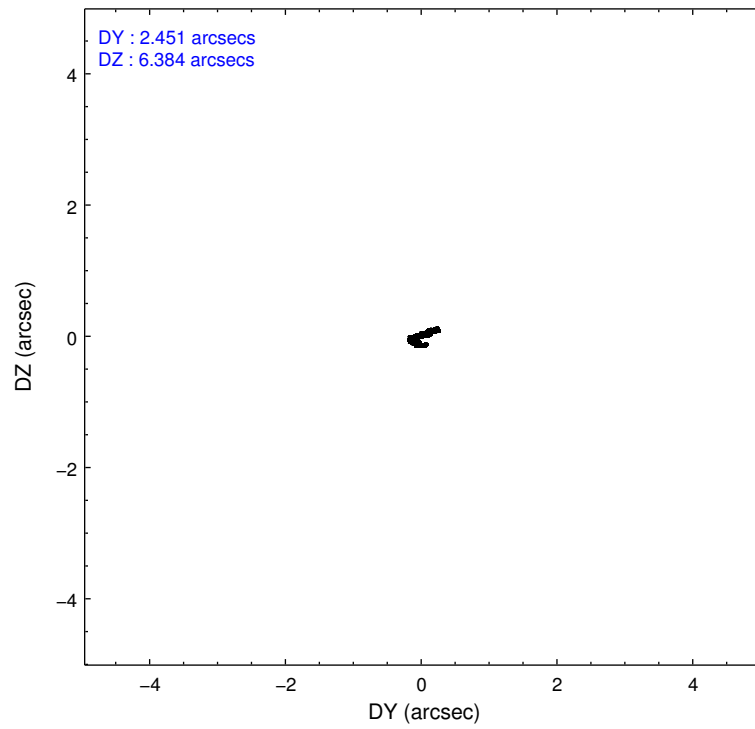
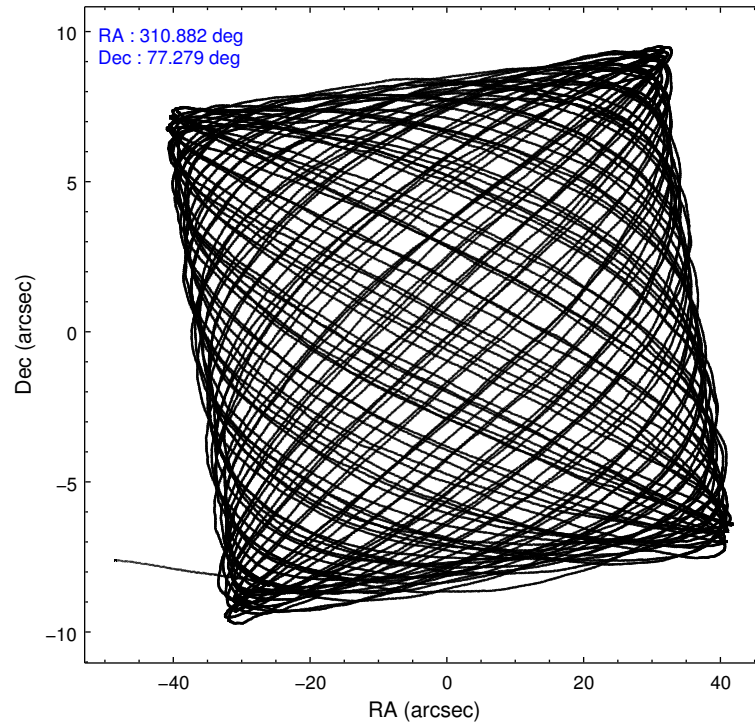
	ccd 2	ccd 3	ccd 6	ccd 7	ccd 8
level 1 events	325005	317283	384859	432991	476127
rejected events	275166	267623	280408	219243	306880
rejected %	84%	84%	72%	50%	64%

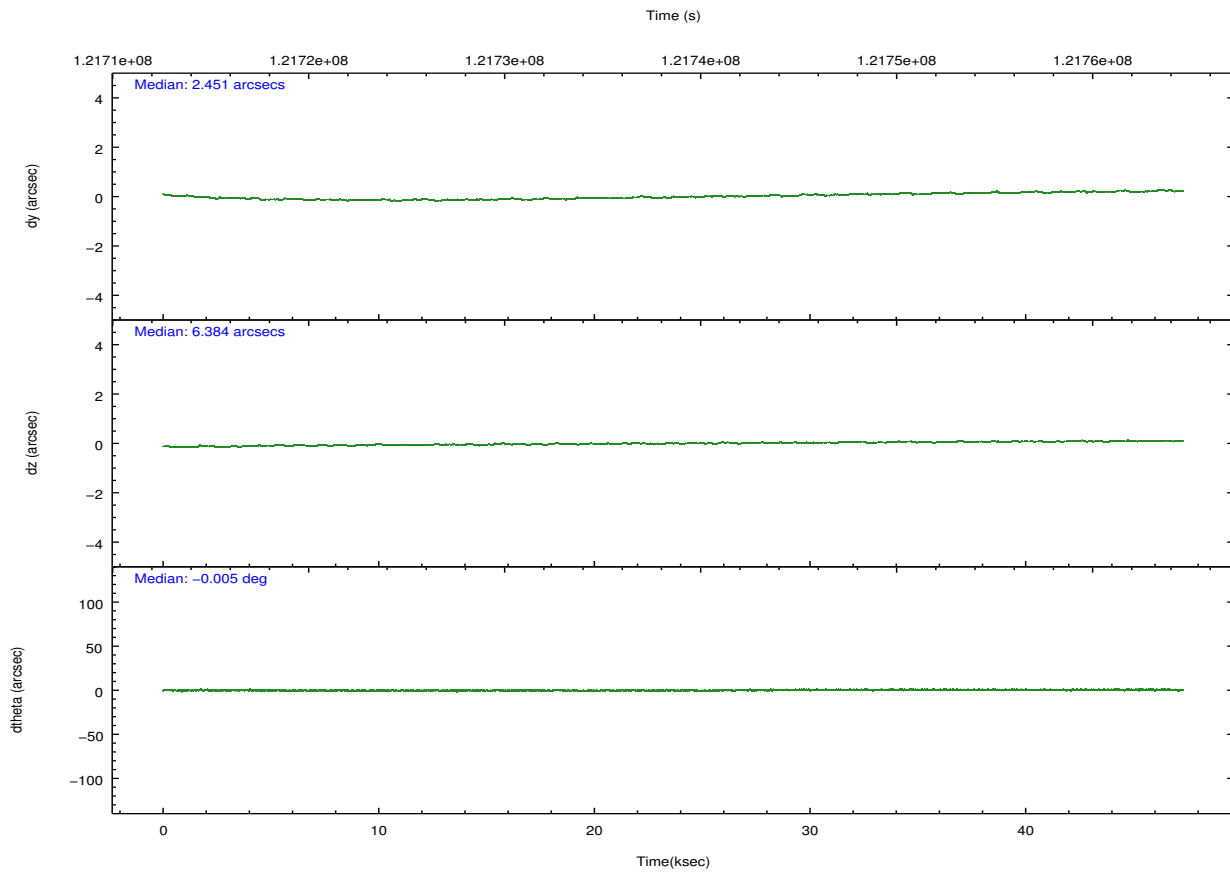
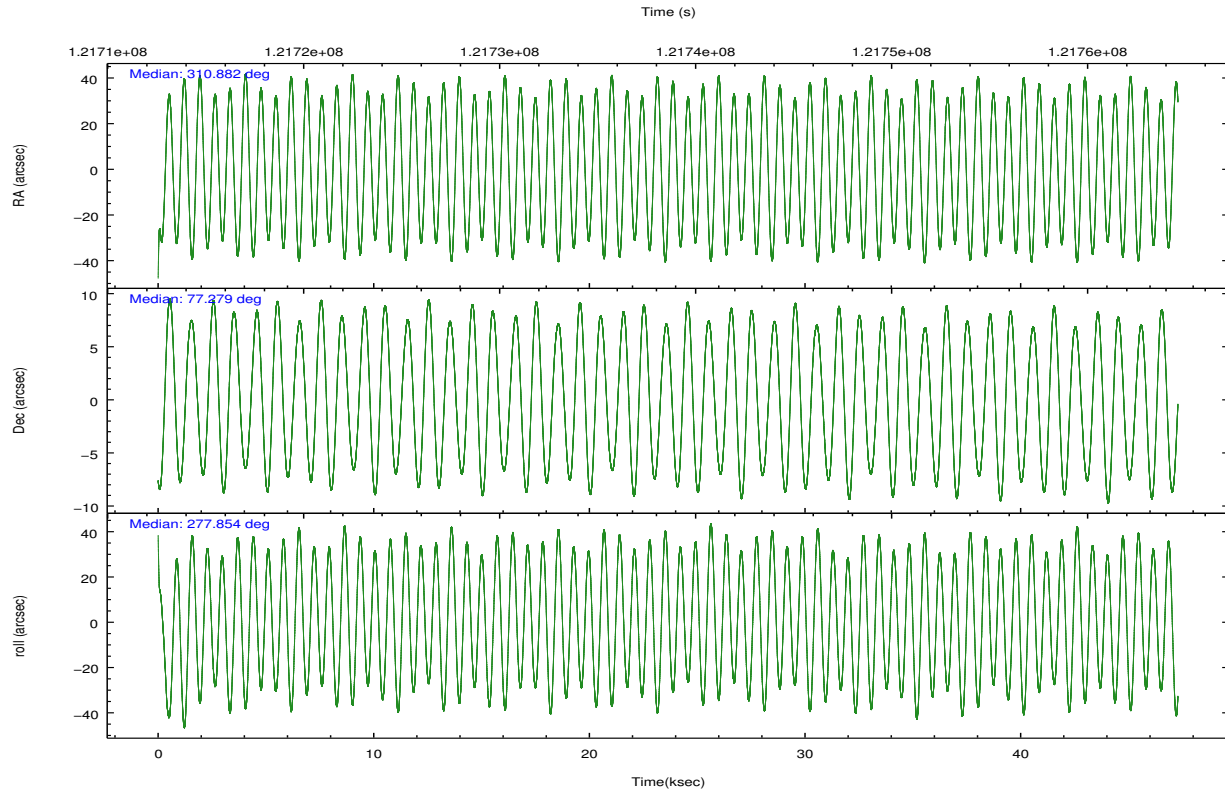
	ccd 2	ccd 3	ccd 6	ccd 7	ccd 8
grade 0 events	24003	24121	63299	22480	59020
	7%	7%	16%	5%	12%
grade 1 events	193	158	293	377	443
	0%	0%	0%	0%	0%
grade 2 events	10811	10194	23867	42074	28430
	3%	3%	6%	9%	5%
grade 3 events	3500	3692	3857	18810	23730
	1%	1%	1%	4%	4%
grade 4 events	3697	3726	3898	18866	21421
	1%	1%	1%	4%	4%
grade 5 events	10348	11410	12708	36622	16743
	3%	3%	3%	8%	3%
grade 6 events	7841	7936	9541	111559	36701
	2%	2%	2%	25%	7%
grade 7 events	264612	256046	267396	182203	289639
	81%	80%	69%	42%	60%

2.2 Compared Parameters

Parameter	Planned	Actual	Parameter	Planned	Actual
Instrument	ACIS	ACIS	Obspar format version number	7	7
Detector	ACIS-23678	ACIS-23678	Obspar file type	PREDICTED	ACTUAL
Grating	NONE	NONE	Obspar update status	NONE	UPDATED
Data mode	FAINT	FAINT	Number of optional ACIS chips dropped	0	0
Observation mode	POINTING	POINTING	On-chip summing requested	N	N
[deg] Pointing RA	310.805543	310.8827547084442	Subarray requested	NONE	NONE
[deg] Pointing Dec	77.300198	77.27885309308793	Alternating exposures requested	N	N
[deg] Pointing Roll	277.771189	277.8524971536337	[s] Primary exposure time	0.000000	3.2
[mm] SIM focus pos	-0.684267	-0.6828225247311905			
[mm] SIM defocus	0	0.001444936568705701			
[mm] SIM translation stage pos	-190.132523	-190.1400660498719			
[mm] SIM translation stage offset	0	0.00754346686406393			
[s] Observation start time (MET)	121715126.184000	121714155.15605			
Observation start date	2001-11-09T17:44:22	2001-11-09T17:29:15			
[s] Observation end time (MET)	121762237.184000	121762551.55798			
Observation end date	2001-11-10T06:49:33	2001-11-10T06:55:51			
Read mode	TIMED	TIMED			

2.3 Aspect



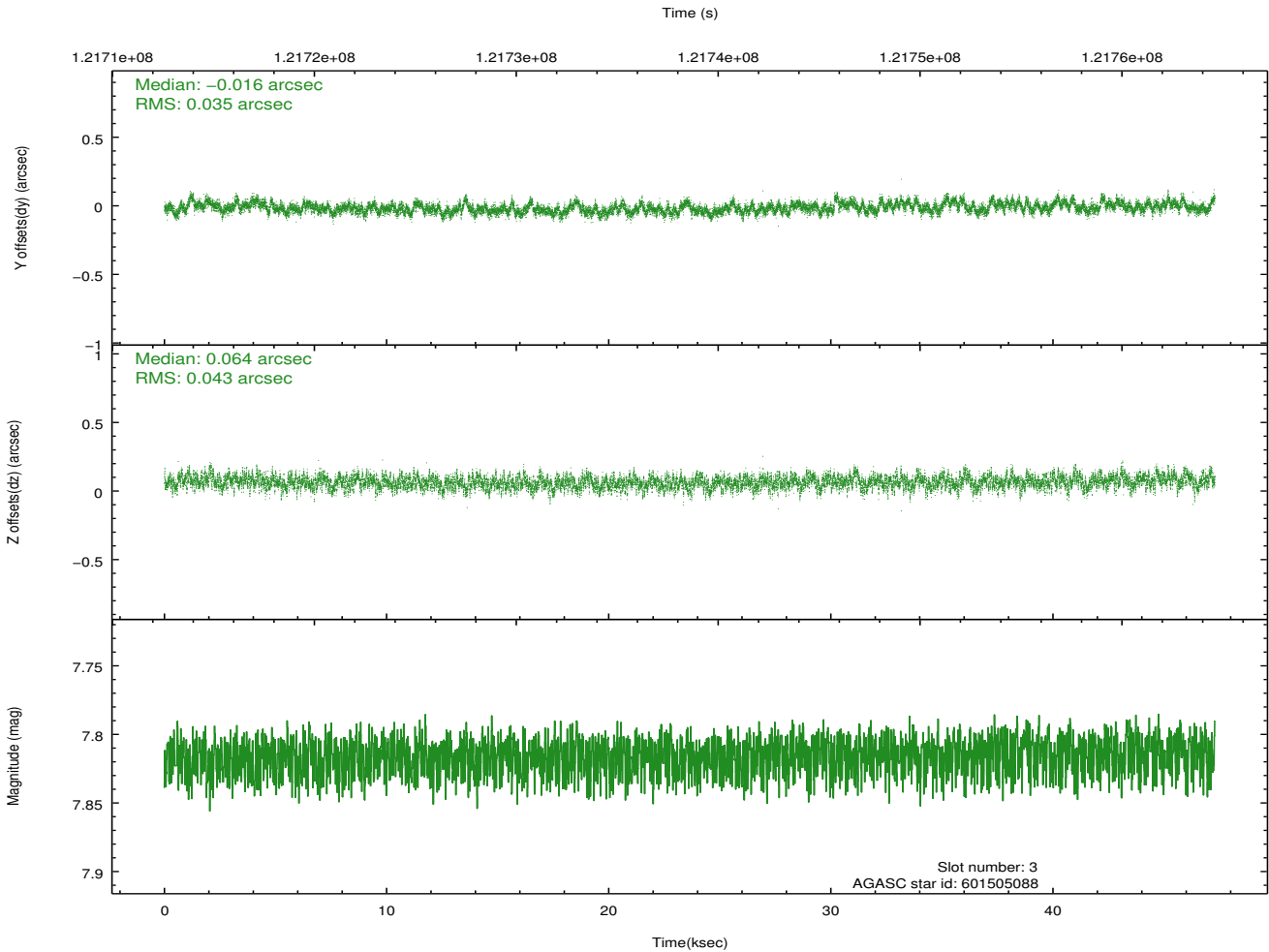
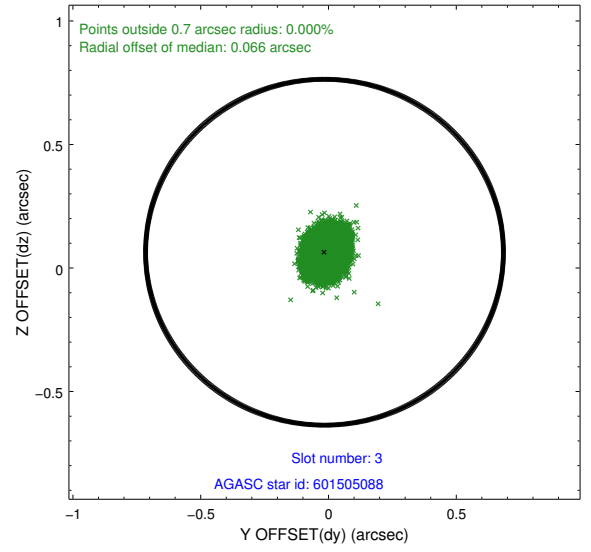
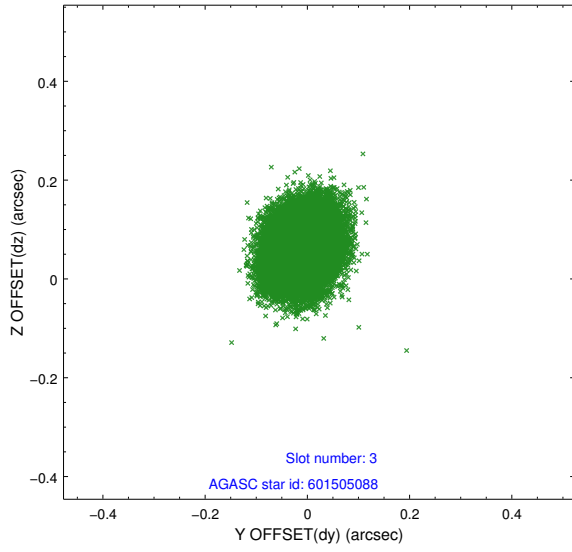


Slot Statistics

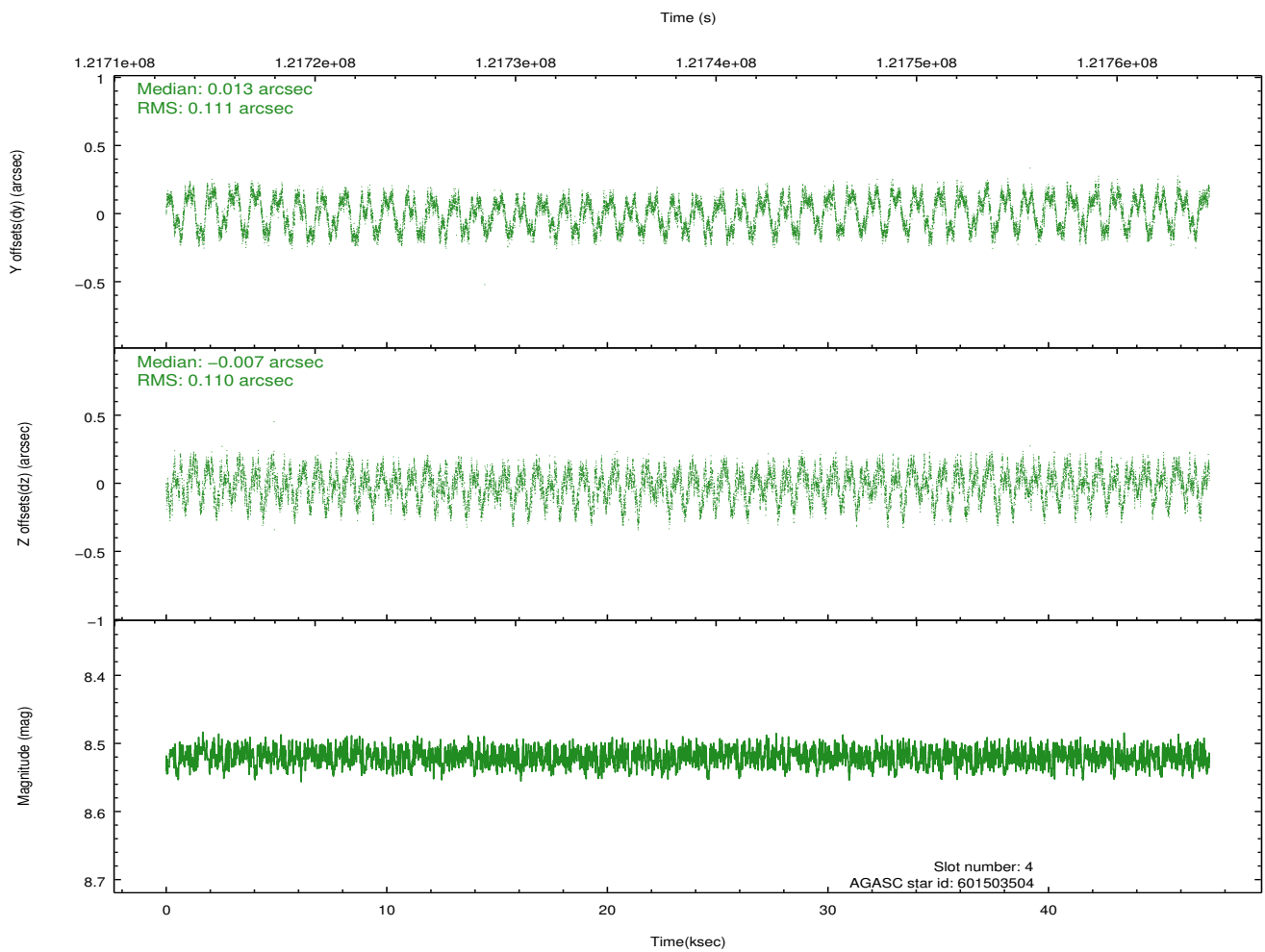
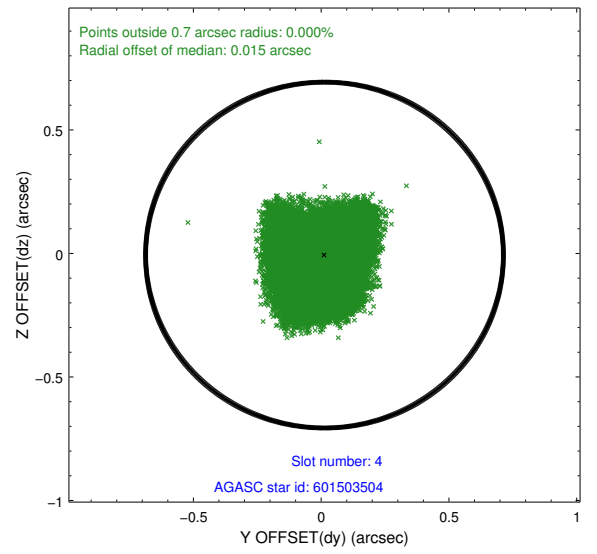
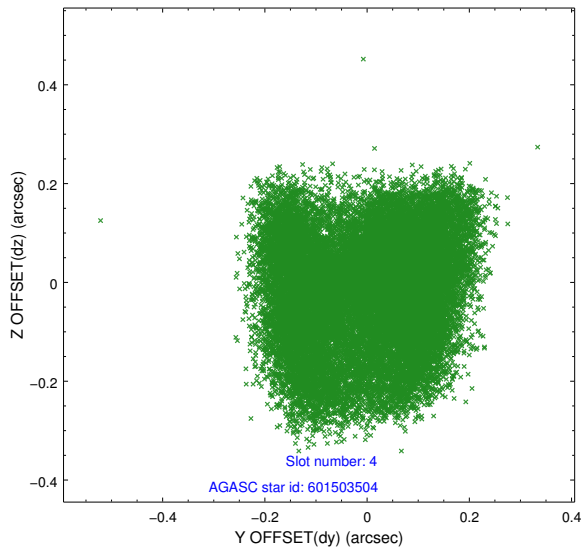
slot	status	id	mag	n_pts	med_dy	med_dz	dr1	dr2	ra	dec	mean_y	mean_z
0	FID	ACIS-S-2	7.11	11535	-0.038	0.007	0.014	0.019	0.000000	0.000000	-755.10	-1727.53
1	FID	ACIS-S-4	7.20	11535	-0.027	0.016	0.019	0.026	0.000000	0.000000	2158.16	181.02
2	FID	ACIS-S-5	7.24	11535	0.031	-0.015	0.011	0.018	0.000000	0.000000	-1807.92	174.58
3	GUIDE	601505088	7.82	23068	-0.016	0.064	0.058	0.095	307.953606	77.436284	-840.69	-2137.57
4	GUIDE	601503504	8.52	23068	0.013	-0.007	0.175	0.247	307.576234	77.735466	-1953.41	-2223.97
5	GUIDE	601633624	9.83	23056	-0.045	-0.026	0.120	0.194	313.008559	77.412541	-198.88	1771.78
6	GUIDE	600969144	10.62	23046	0.005	-0.058	0.242	0.389	309.816154	76.667723	2138.48	-1120.02
7	GUIDE	601507200	9.66	23059	0.060	0.039	0.112	0.179	309.587464	77.035998	799.81	-1101.14

2.4 Star Slots

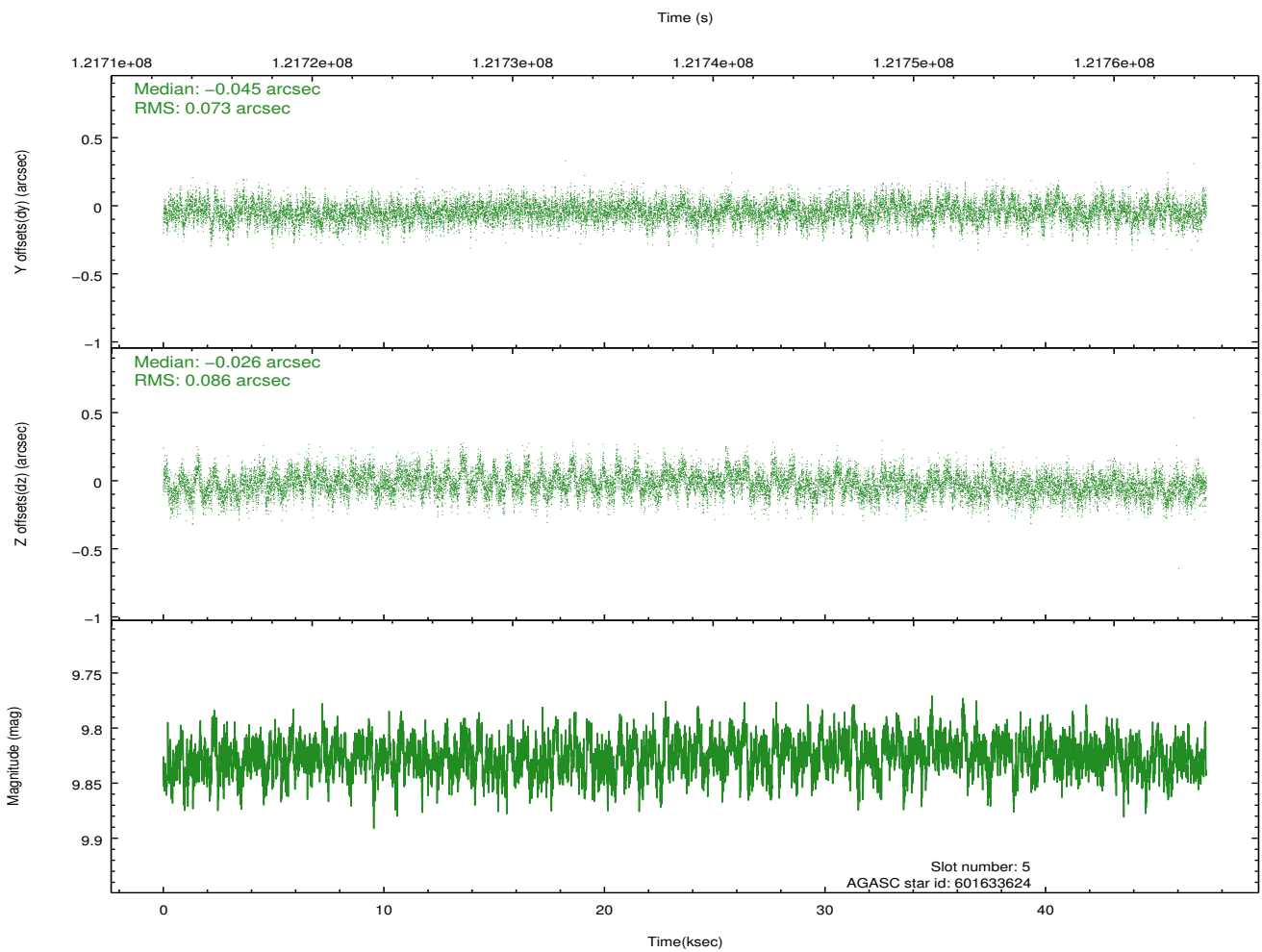
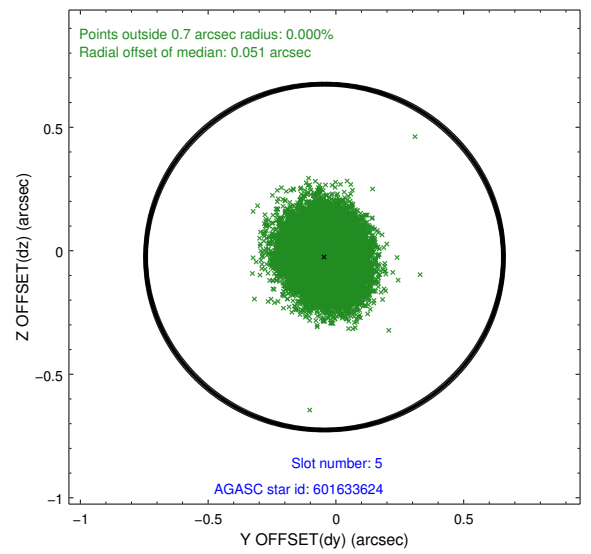
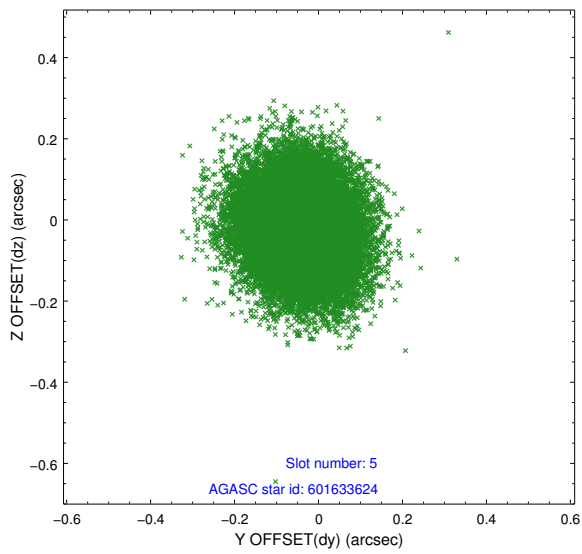
2.4.1 Slot 3



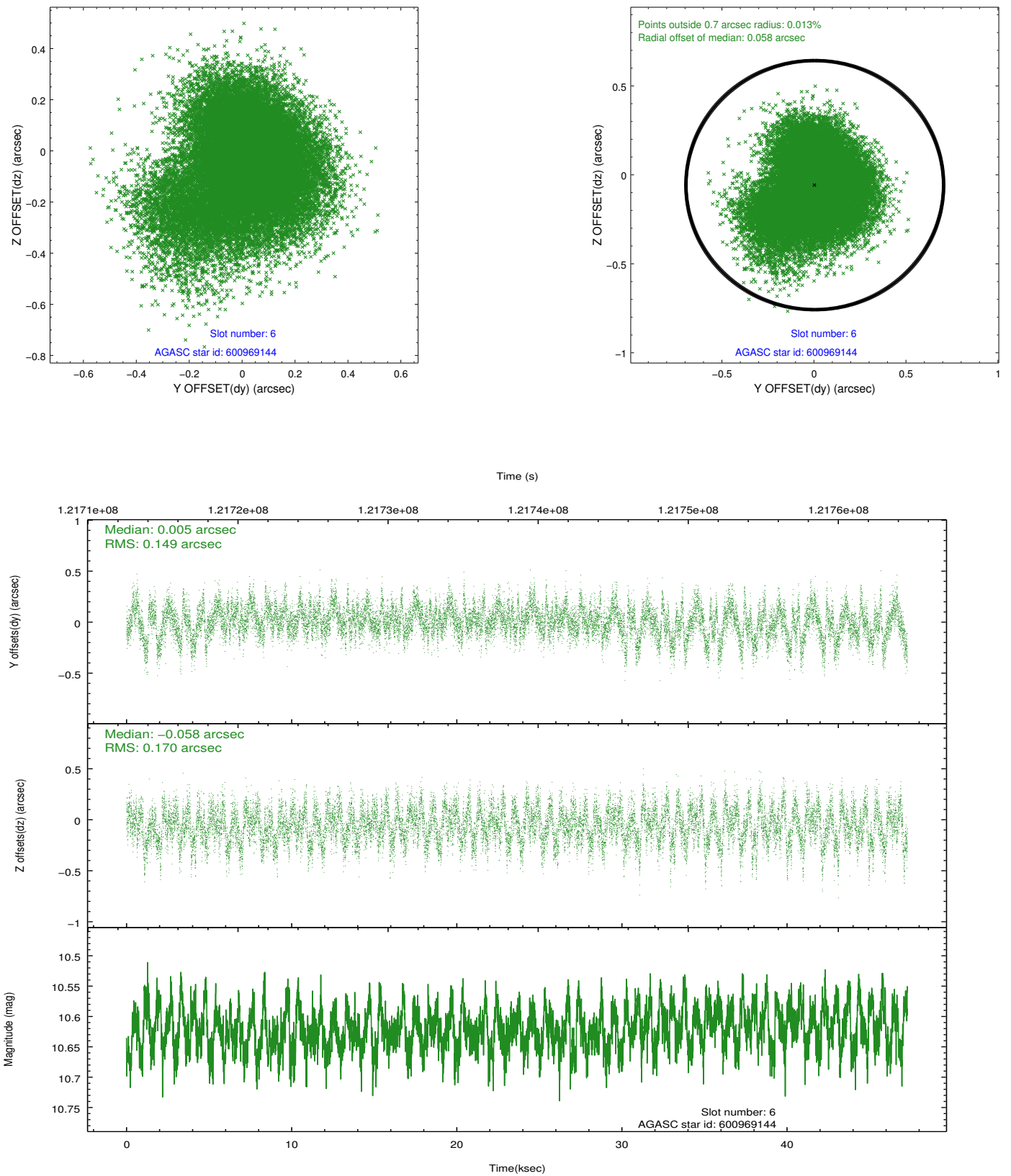
2.4.2 Slot 4



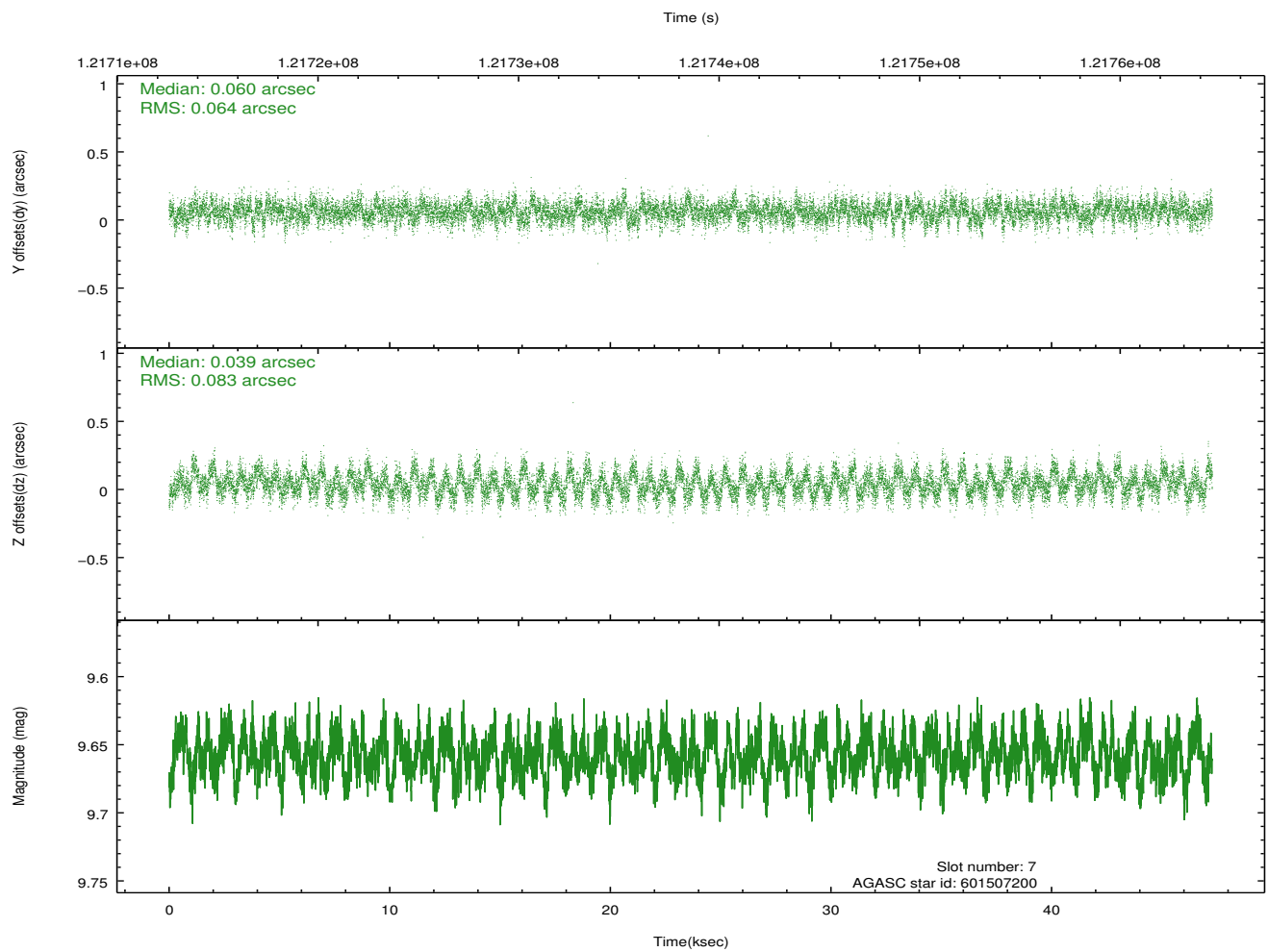
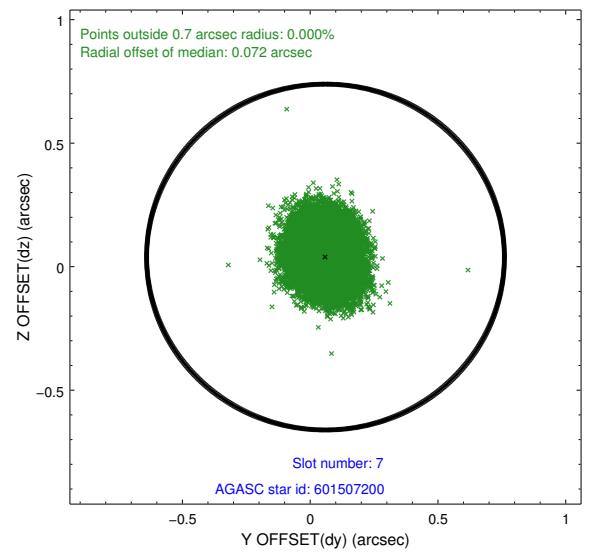
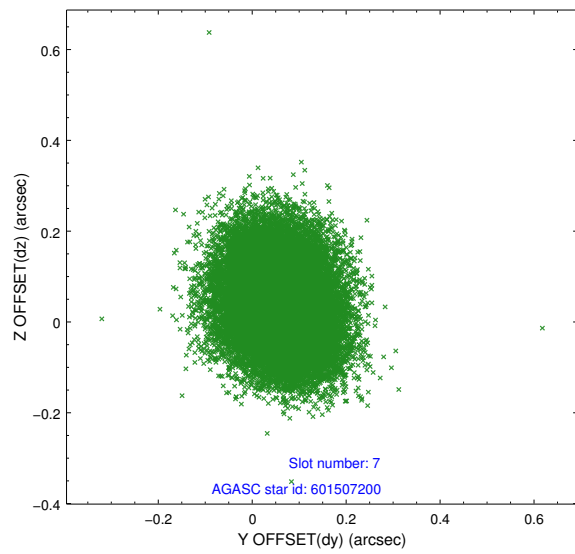
2.4.3 Slot 5



2.4.4 Slot 6

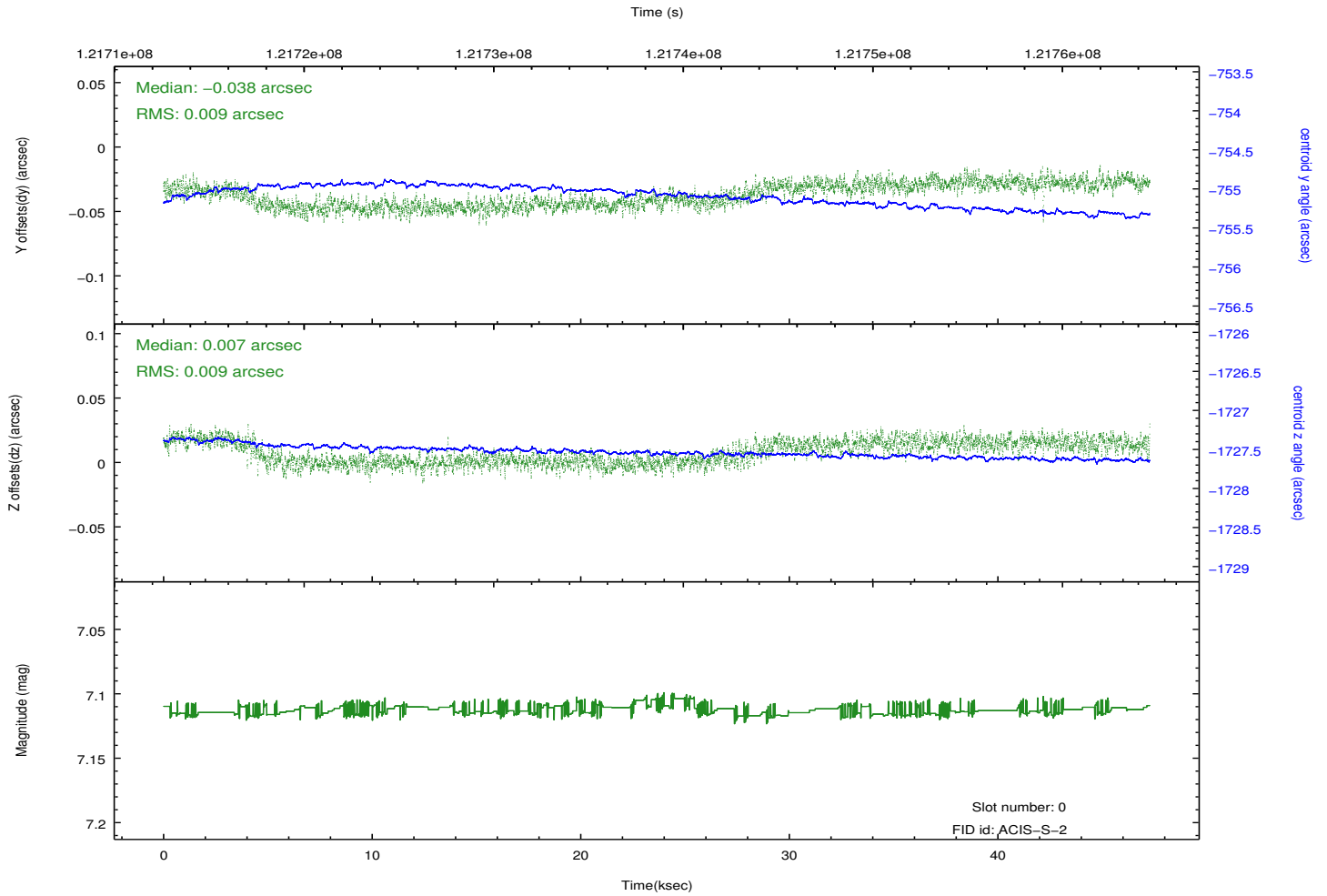
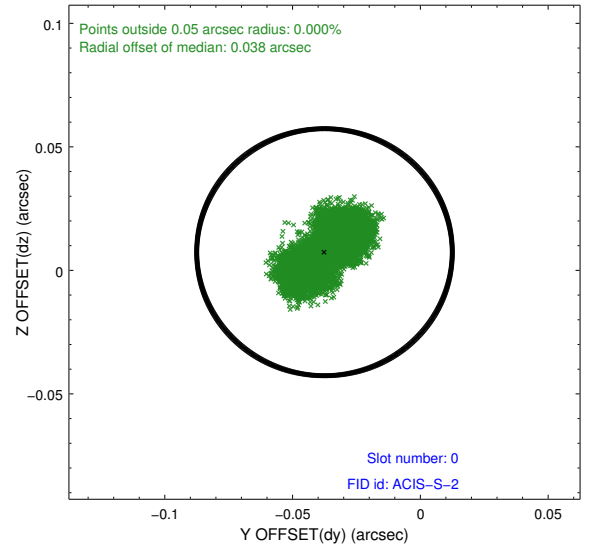
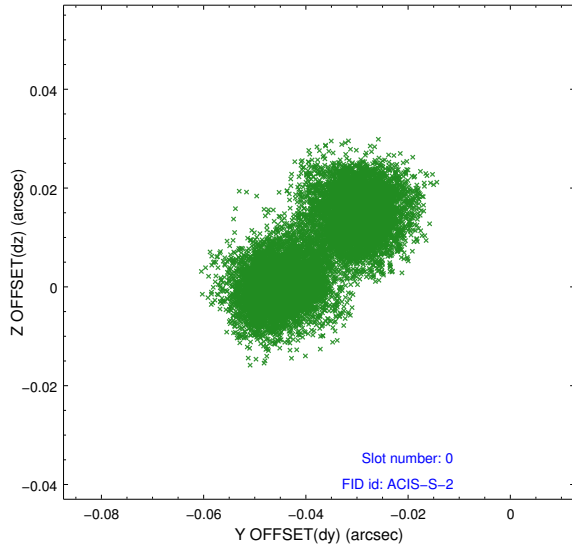


2.4.5 Slot 7

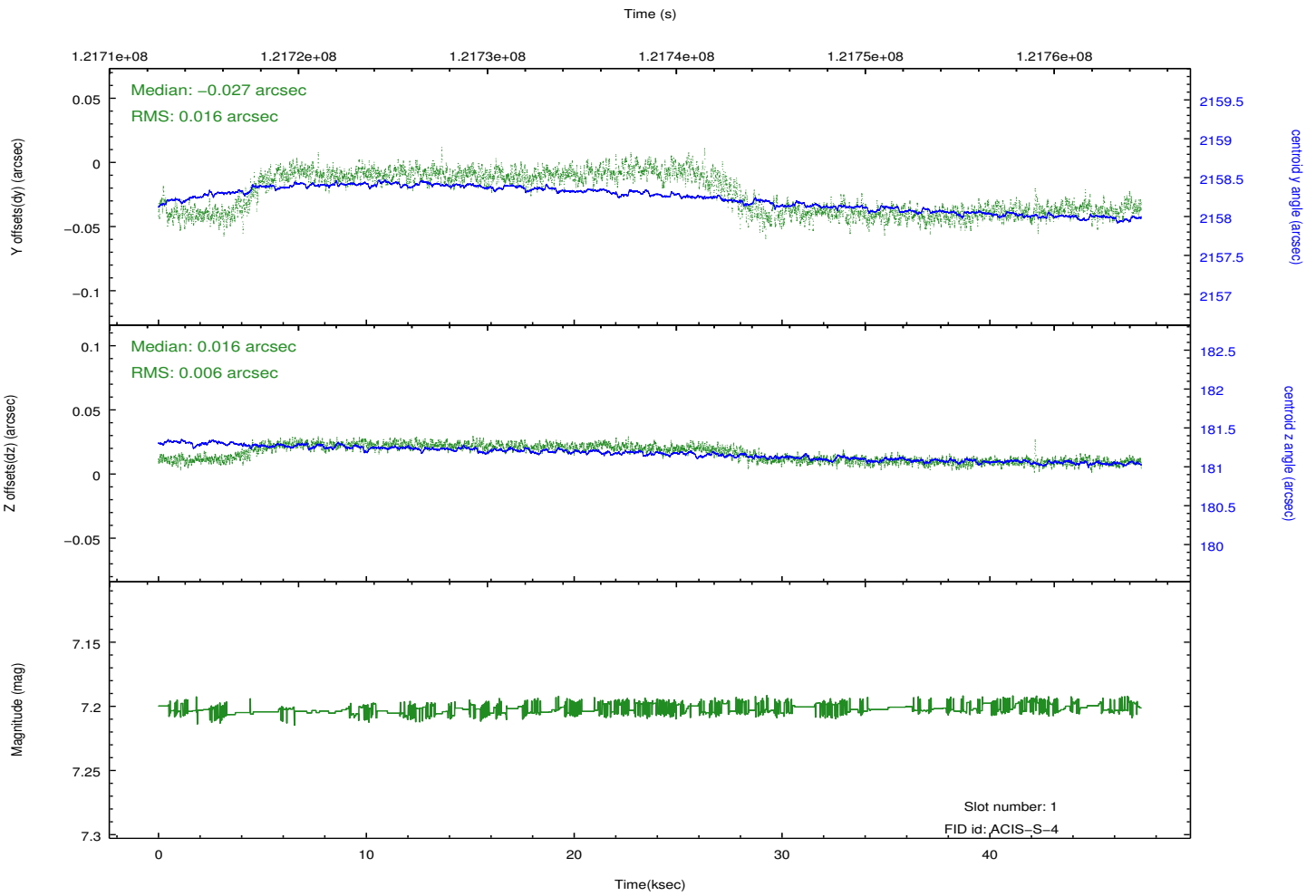
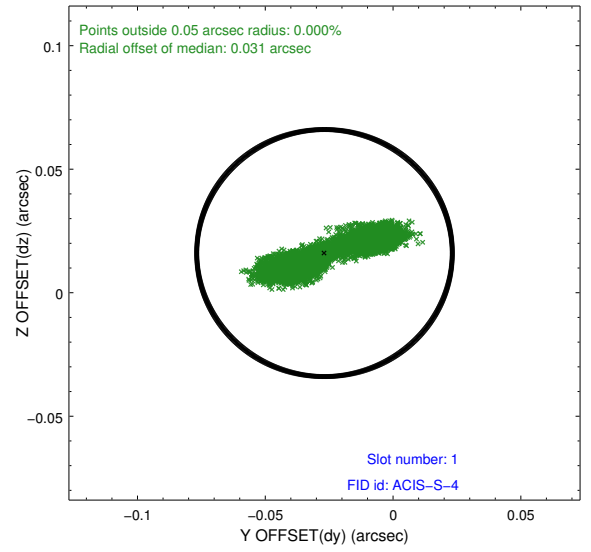
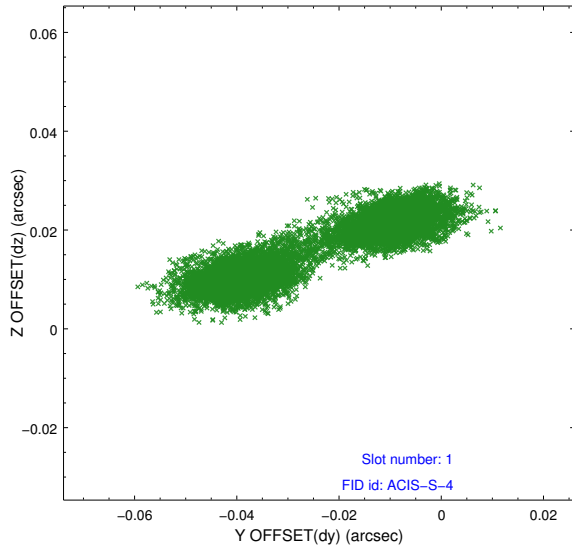


2.5 FID Slots

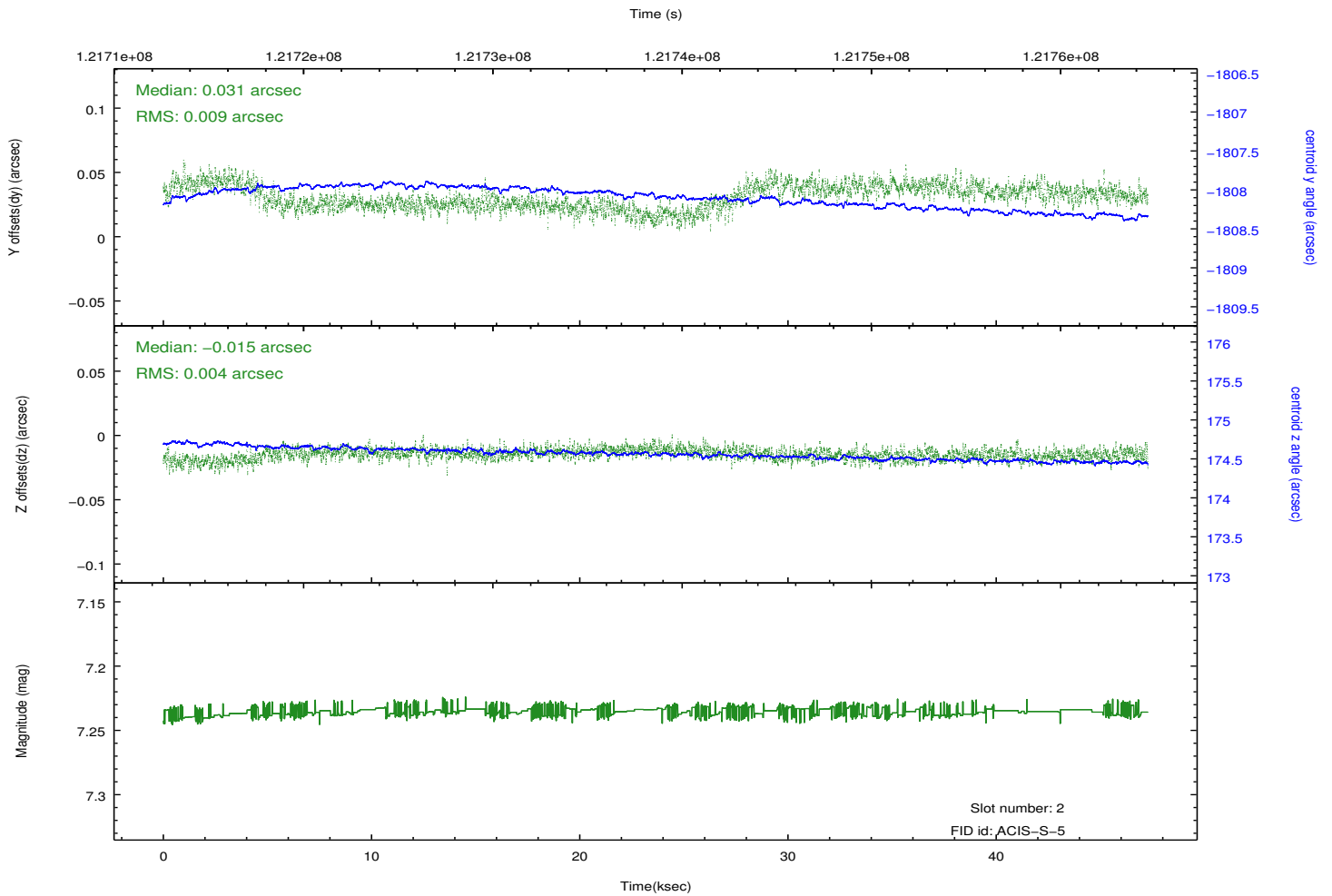
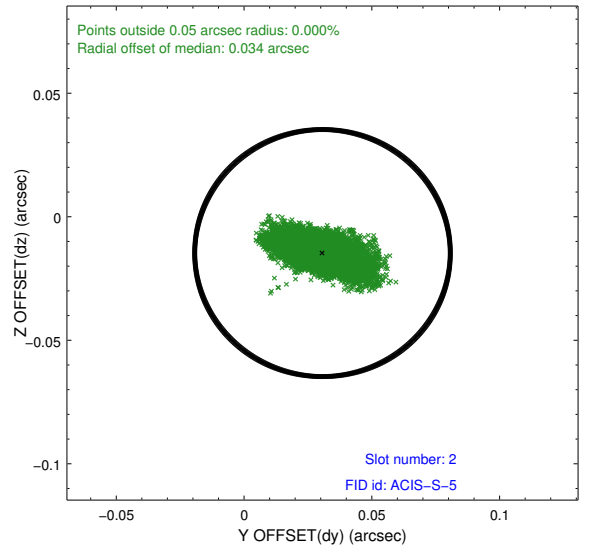
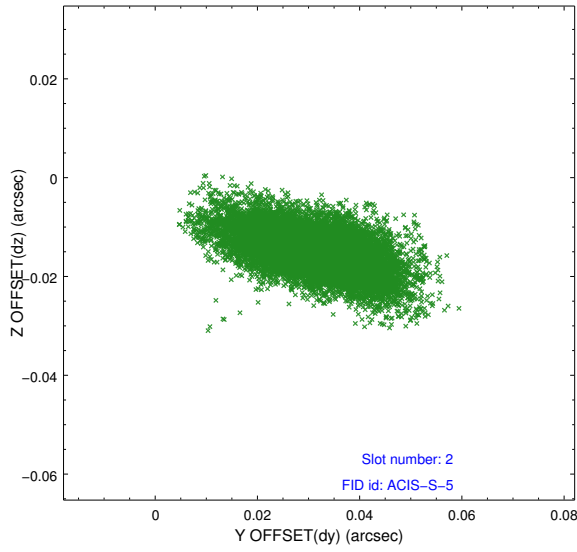
2.5.1 Slot 0



2.5.2 Slot 1



2.5.3 Slot 2



A Summary

A.1 Status

V&V Scientist	Jen Lauer
V&V Date (YYYY-MM-DD)	2012.09.28
V&V Edition	1
V&V Disposition and Status	OK
V&V Charge Time	47.209

A.2 Comments