

V&V Reference Report

L2 ASCDS Version : 8.4.5

Observation 3971 - L2 Version 3
Chandra X-Ray Center

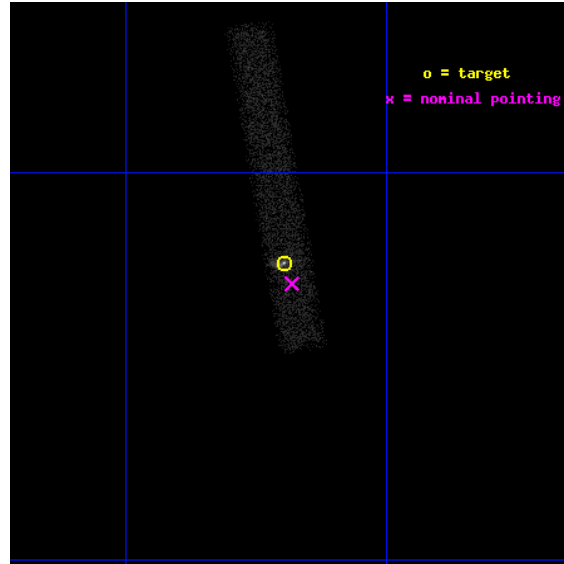
L2 Processing Date : Oct 31 2012

Contents

1	Front	2
2	OBI	3
2.1	OBI	3
2.1.1	Images	3
2.1.2	Bias	3
2.1.3	Parameters	4
2.1.4	Events	4
2.2	Compared Parameters	5
2.3	Aspect	6
2.4	Star Slots	9
2.4.1	Slot 3	9
2.4.2	Slot 4	10
2.4.3	Slot 5	11
2.4.4	Slot 6	12
2.4.5	Slot 7	13
2.5	FID Slots	14
2.5.1	Slot 0	14
2.5.2	Slot 1	15
2.5.3	Slot 2	16
A	Summary	17
A.1	Status	17
A.2	Comments	17

1 Front

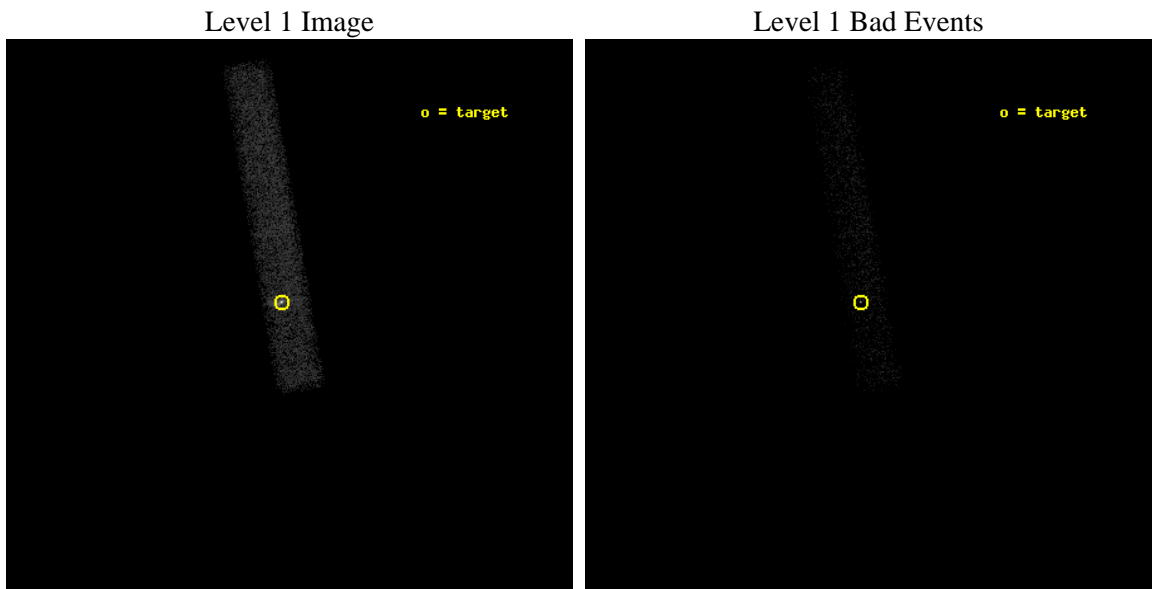
seq_num	700650	Sequence number
obs_id	3971	Observation id
title	STRUCTURES AND SPECTRA OF EXTENDED EMISSION REGIONS IN THREE BL LAC OBJECTS	Proposal title
observer	Prof Mark Birkinshaw	Principal investigator
object	AP LIBRAE	Source name
dtcycle	0	
cycle	P	events from which exps? Prim/Second/Both
ra_targ	229.424167	Observer's specified target RA [deg]
dec_targ	-24.371944	Observer's specified target Dec [deg]
ra_nom	229.42056500255	Nominal RA [deg]
dec_nom	-24.38107043899	Nominal Dec [deg]
roll_nom	260.26706703075	Nominal Roll [deg]
revision	3	Processing version of data
ontime	14127.600210488	Sum of GTIs [s]
livetime	12812.98767503	Livetime [s]
ontime7	14127.600210488	Sum of GTIs [s]
l2events	12716	Number of level 2 events



2 OBI

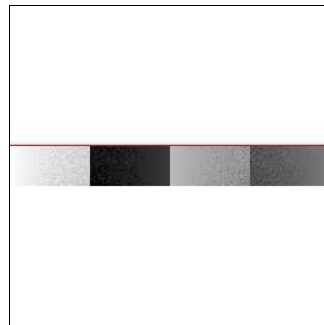
2.1 OBI

2.1.1 Images



2.1.2 Bias

Chip 7



2.1.3 Parameters

obi_num	1	Obi number	sched_exp_time	14000.000000	[s] Scheduled observation exposure time
ascdsver	8.4.5	Processing system revision	ontime	14127.600210488	Sum of GTIs [s]
caldbver	4.5.2	 	ontime7	14127.600210488	Sum of GTIs [s]
date	2012-10-31T05:14:31	Date and time of file creation	l1events	22916	Number of level 1 events
revision	3	Processing version of data			

2.1.4 Events

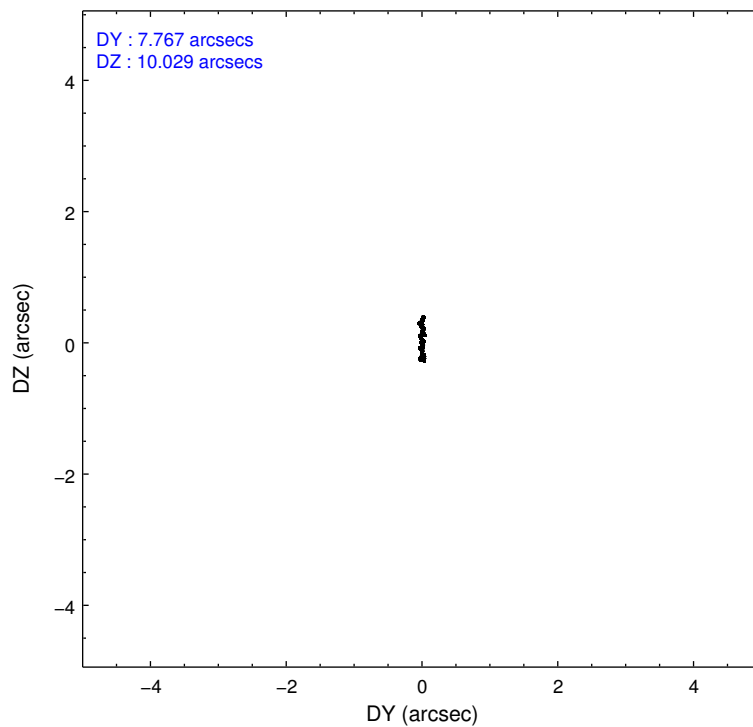
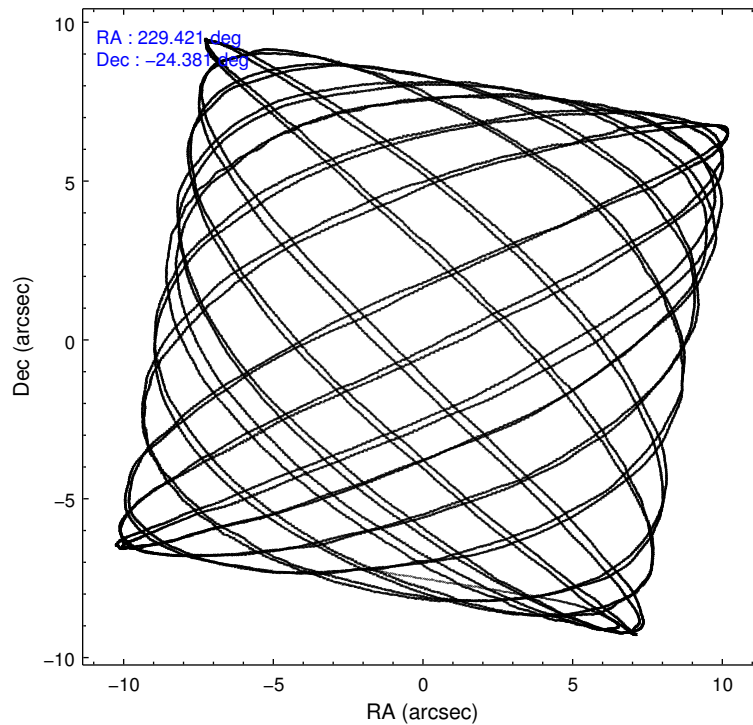
	ccd 7
level 1 events	22916
rejected events	9380
rejected %	40%

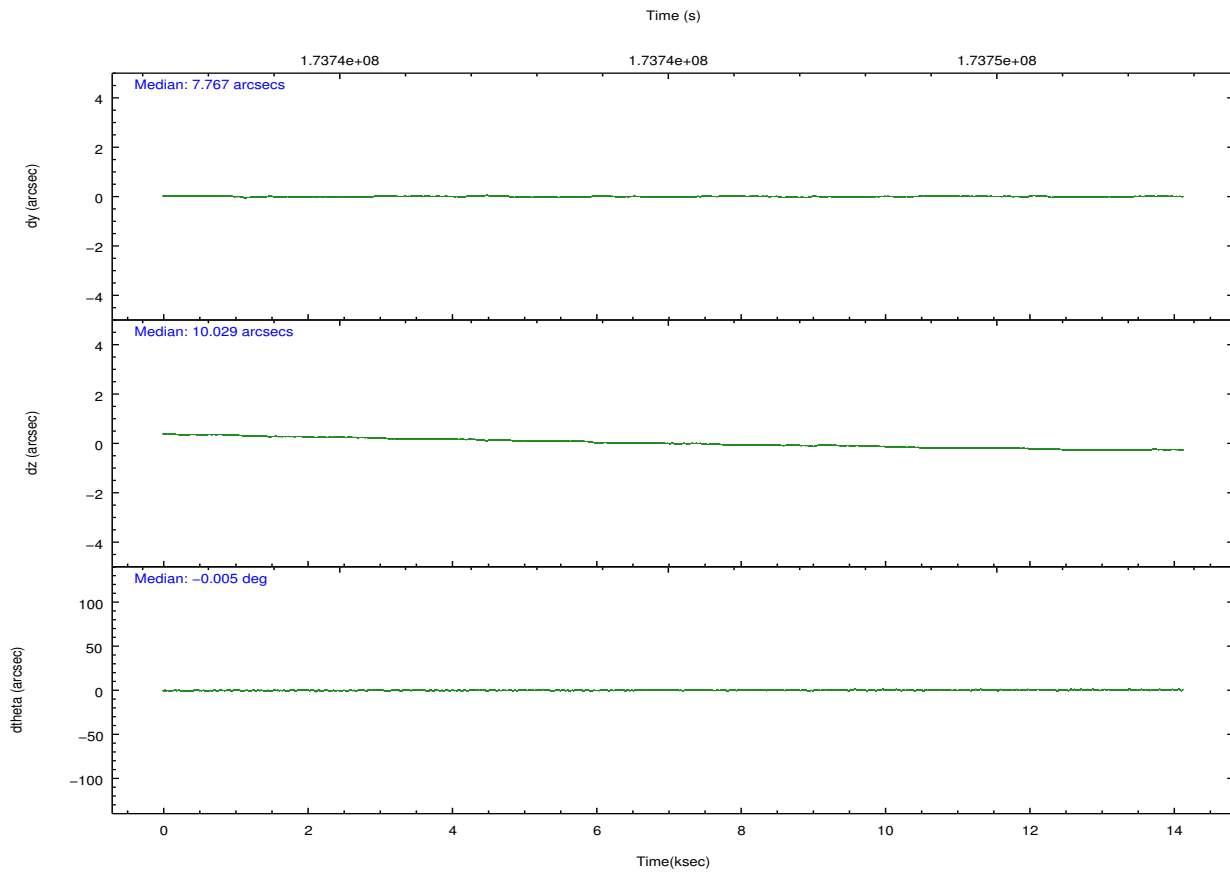
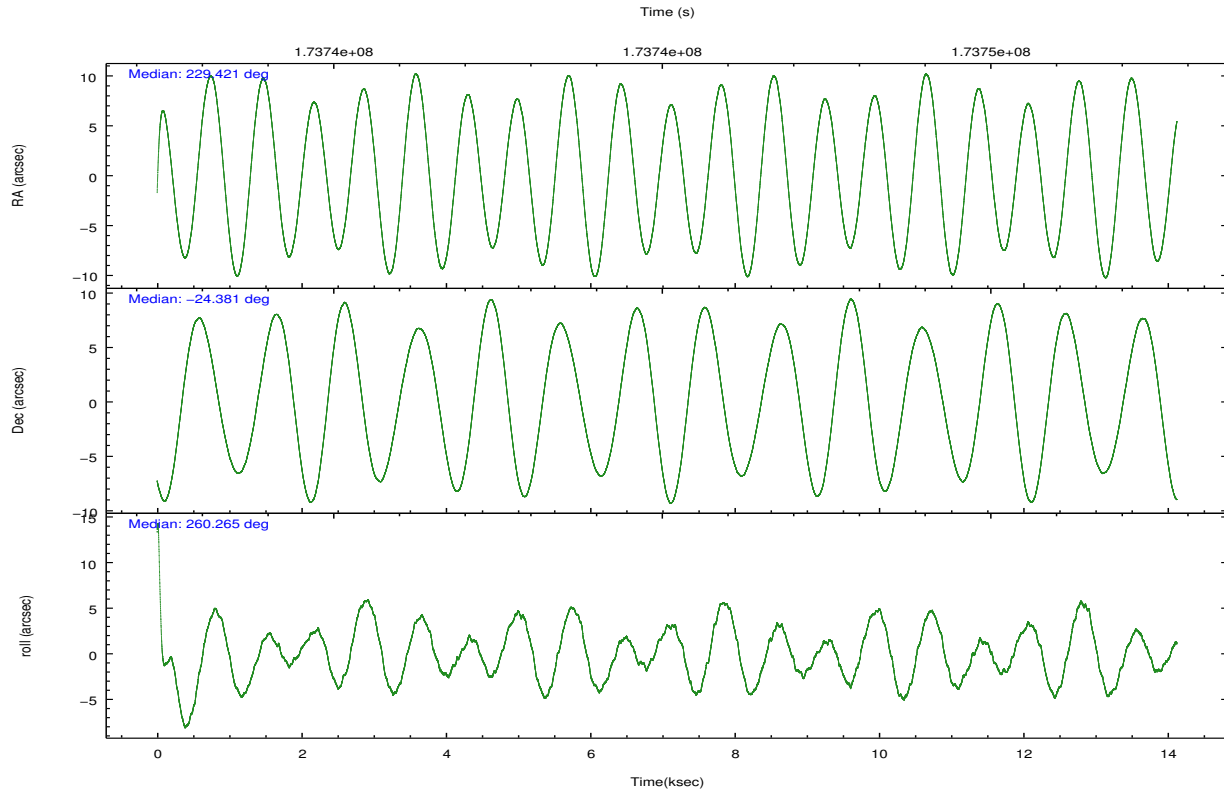
	ccd 7
grade 0 events	2826
	12%
grade 1 events	53
	0%
grade 2 events	3098
	13%
grade 3 events	1694
	7%
grade 4 events	1681
	7%
grade 5 events	1602
	6%
grade 6 events	4754
	20%
grade 7 events	7208
	31%

2.2 Compared Parameters

Parameter	Planned	Actual	Parameter	Planned	Actual
Instrument	ACIS	ACIS	Obspar format version number	7	7
Detector	ACIS-7	ACIS-7	Obspar file type	PREDICTED	ACTUAL
Grating	NONE	NONE	Obspar update status	NONE	UPDATED
Data mode	FAINT	FAINT	Number of optional ACIS chips dropped	0	0
Observation mode	POINTING	POINTING	On-chip summing requested	N	N
[deg] Pointing RA	229.409837	229.4205650025506	Subarray requested	CUSTOM	1/8
[deg] Pointing Dec	-24.355627	-24.38107043898966	Subarray start row	449	449
[deg] Pointing Roll	260.105990	260.2670670307456	Subarray row count	128	128
[mm] SIM focus pos	-0.684267	-0.6828225247311905	Alternating exposures requested	N	N
[mm] SIM defocus	0	0.001444936568705701	[s] Primary exposure time	0.000000	0.4
[mm] SIM translation stage pos	-190.132523	-190.1400660498719			
[mm] SIM translation stage offset	0	0.00754346686406393			
[s] Observation start time (MET)	173738137.184000	173736928.89101			
Observation start date	2003-07-04T20:34:33	2003-07-04T20:15:28			
[s] Observation end time (MET)	173752137.184000	173753441.64171			
Observation end date	2003-07-05T00:27:53	2003-07-05T00:50:41			
Read mode	TIMED	TIMED			

2.3 Aspect



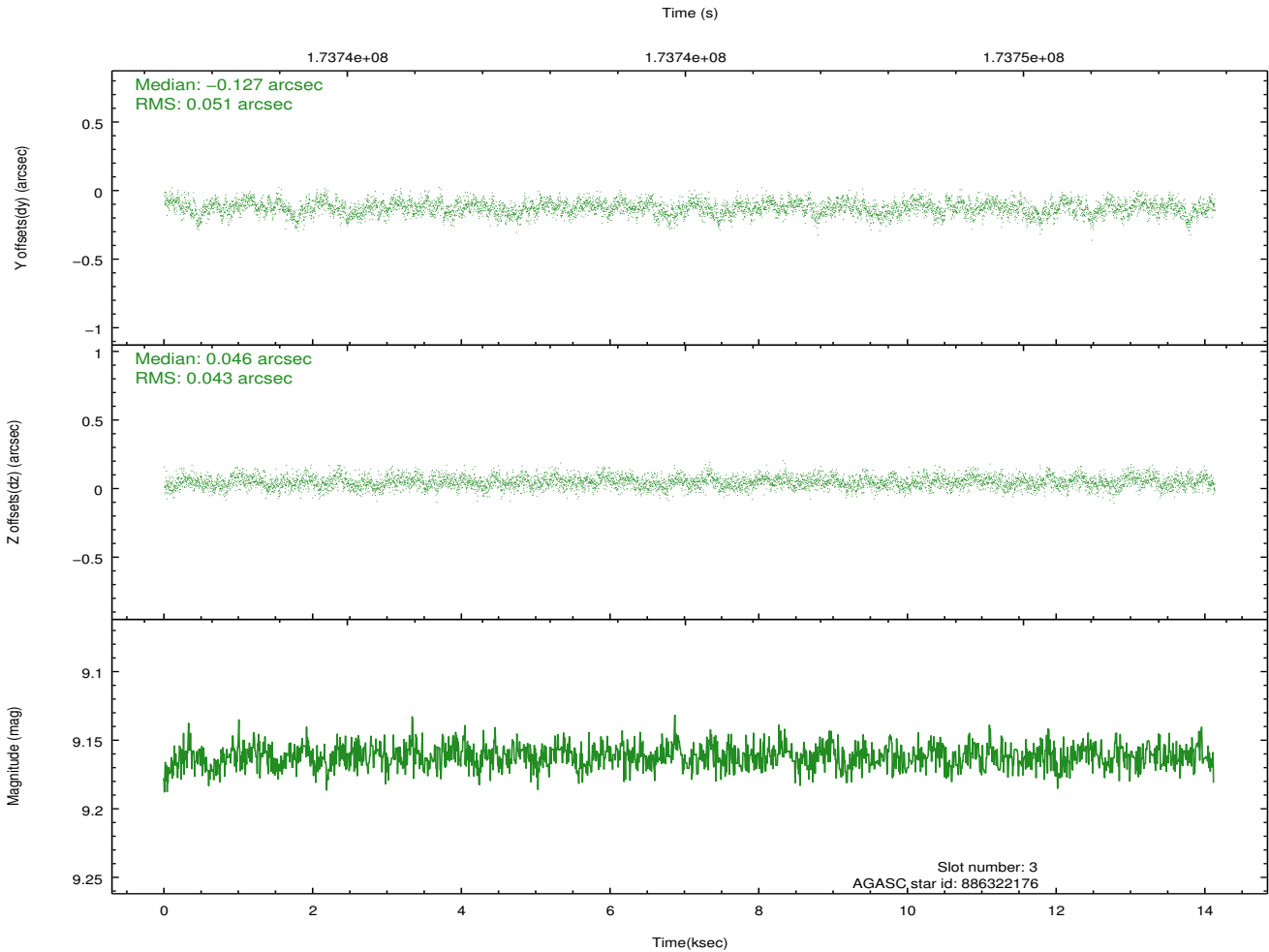
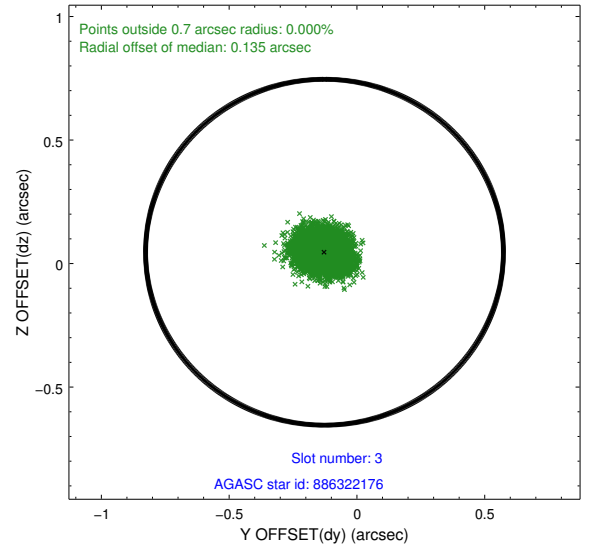
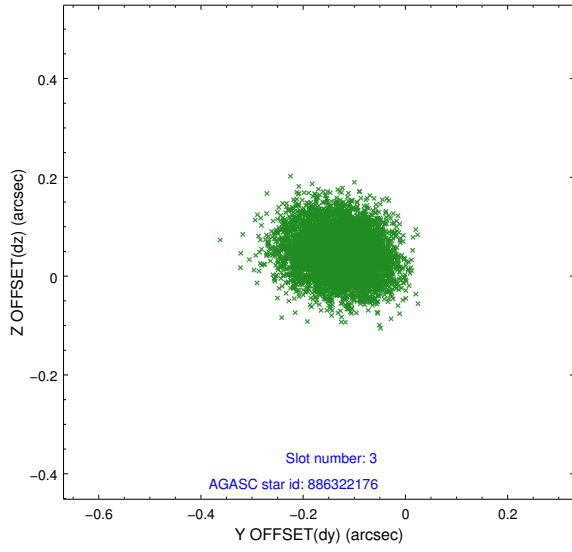


Slot Statistics

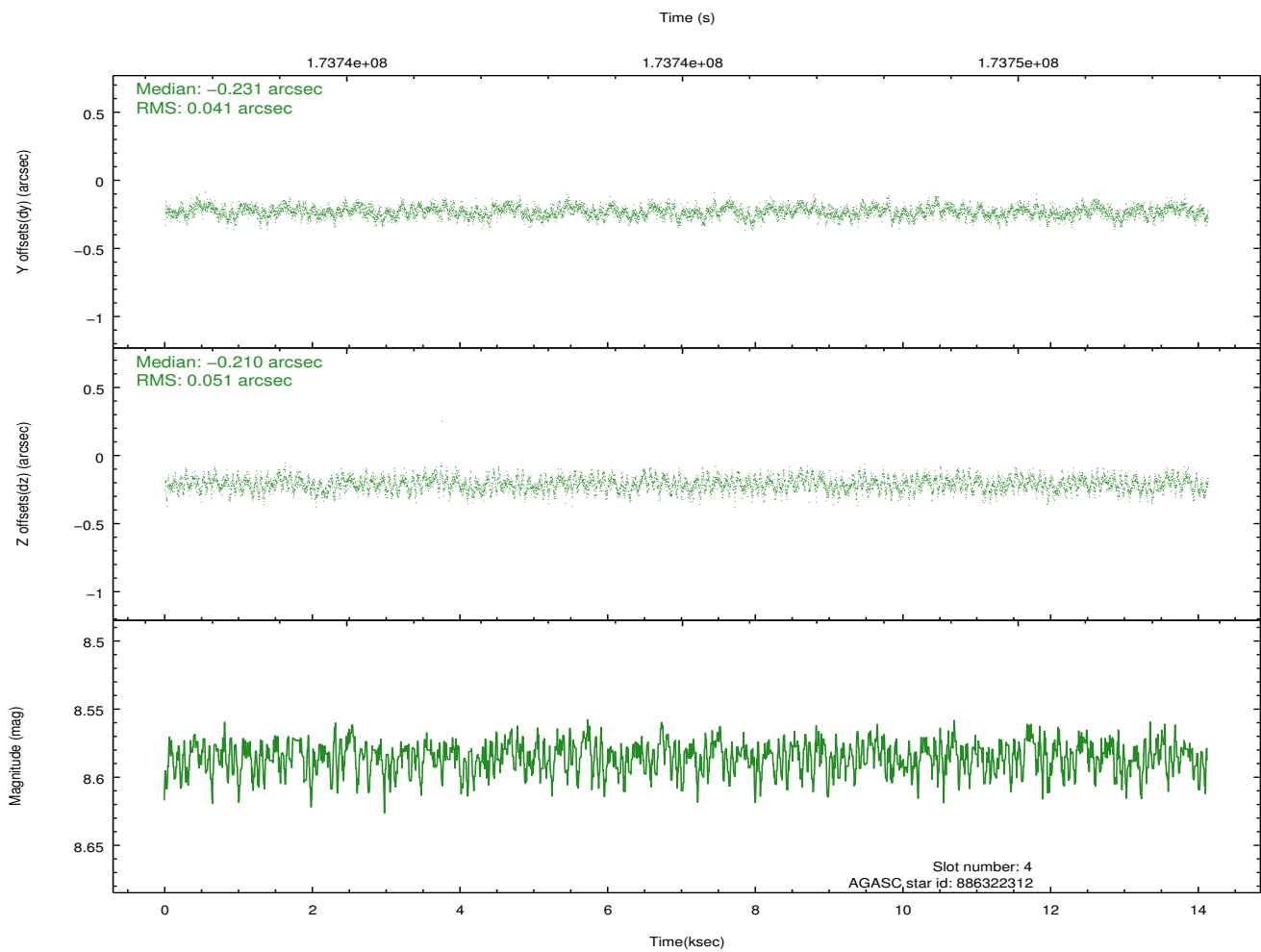
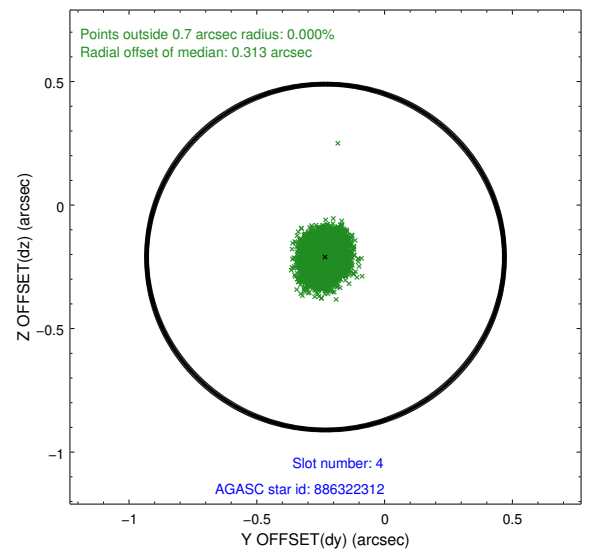
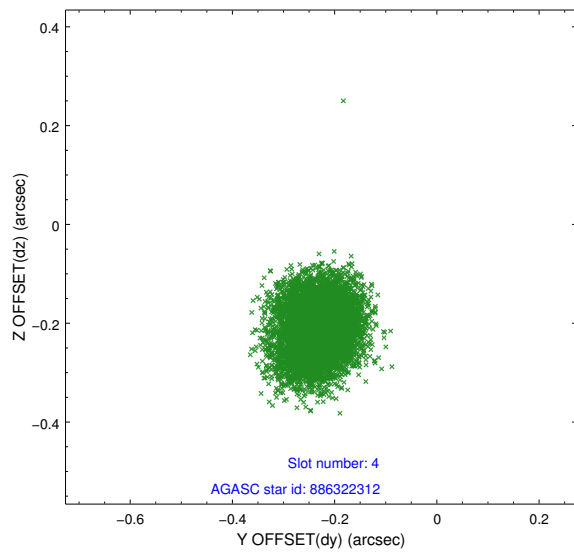
slot	status	id	mag	n_pts	med_dy	med_dz	dr1	dr2	ra	dec	mean_y	mean_z
0	FID	ACIS-S-2	7.10	3446	-0.041	-0.022	0.008	0.014	0.000000	0.000000	-760.54	-1731.33
1	FID	ACIS-S-4	7.20	3446	0.084	0.026	0.005	0.010	0.000000	0.000000	2152.67	176.93
2	FID	ACIS-S-5	7.23	3446	-0.074	0.005	0.008	0.013	0.000000	0.000000	-1813.03	170.86
3	GUIDE	886322176	9.16	6889	-0.127	0.046	0.071	0.116	229.683112	-23.823631	-2040.44	557.73
4	GUIDE	886322312	8.58	6892	-0.231	-0.210	0.070	0.111	228.881762	-23.821702	-1591.69	-2043.08
5	GUIDE	886834920	9.46	6889	0.109	-0.050	0.079	0.130	228.992313	-24.683425	1399.40	-1142.48
6	GUIDE	886842880	9.29	6889	0.045	0.166	0.091	0.143	229.919261	-24.791590	1263.53	1910.59
7	GUIDE	886845824	8.78	6891	0.205	0.050	0.070	0.112	229.471798	-24.982009	2187.42	587.18

2.4 Star Slots

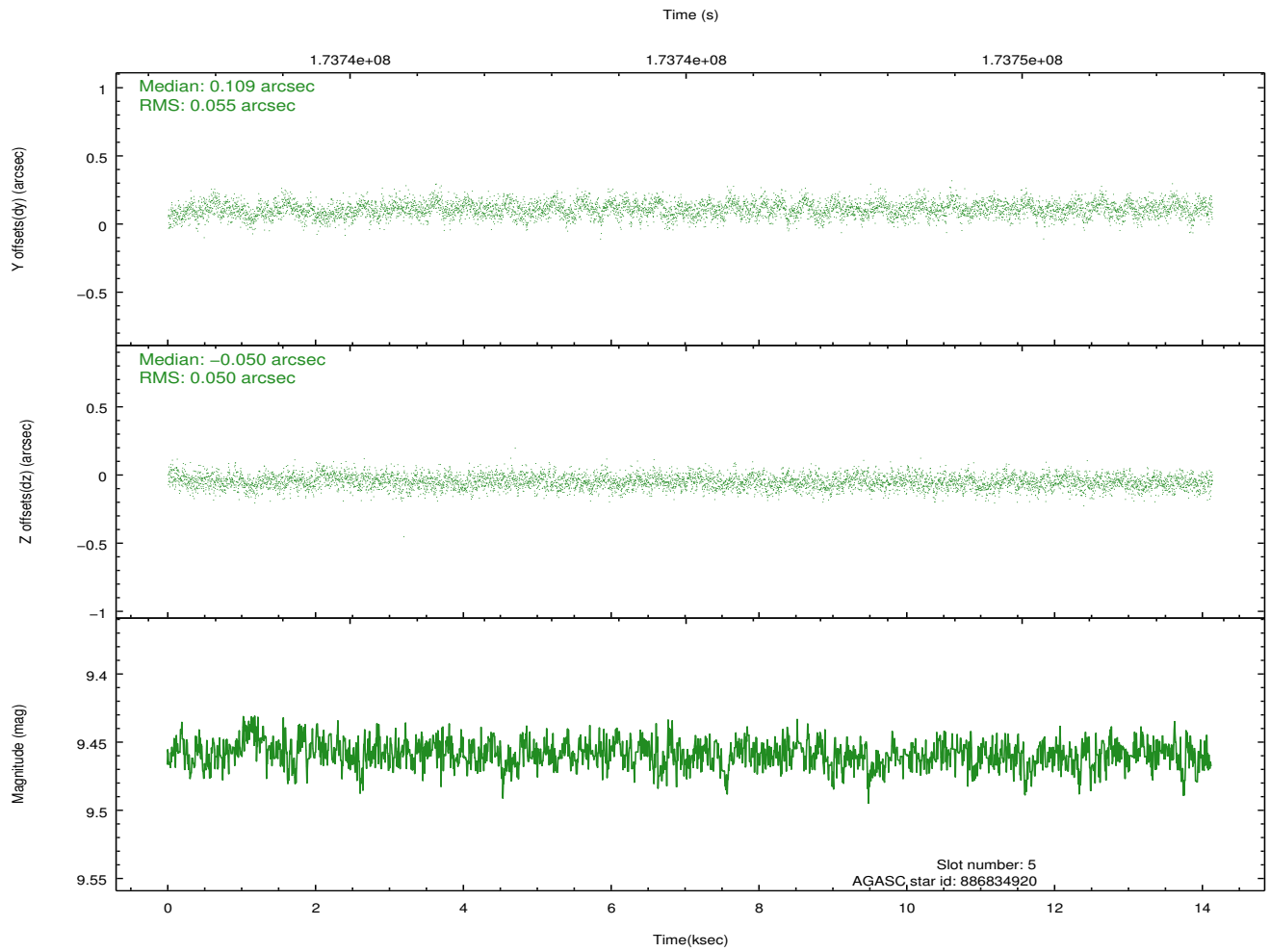
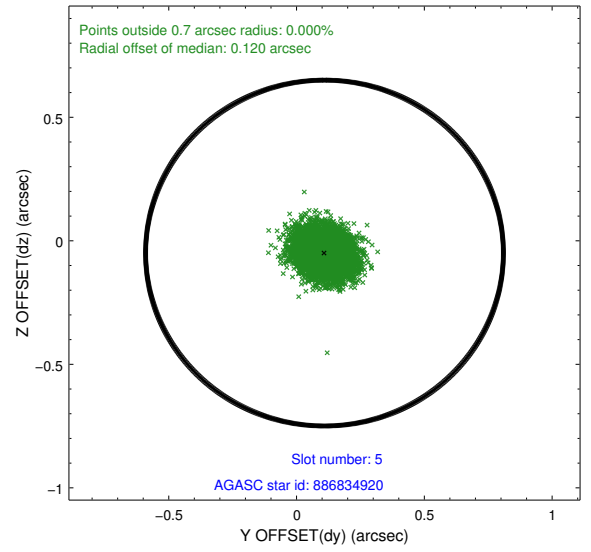
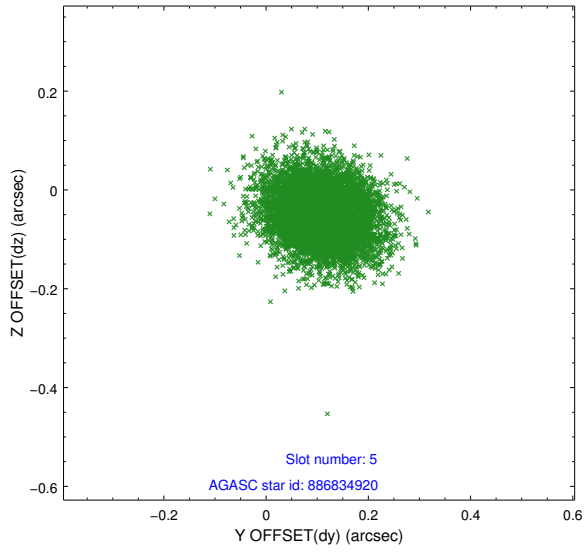
2.4.1 Slot 3



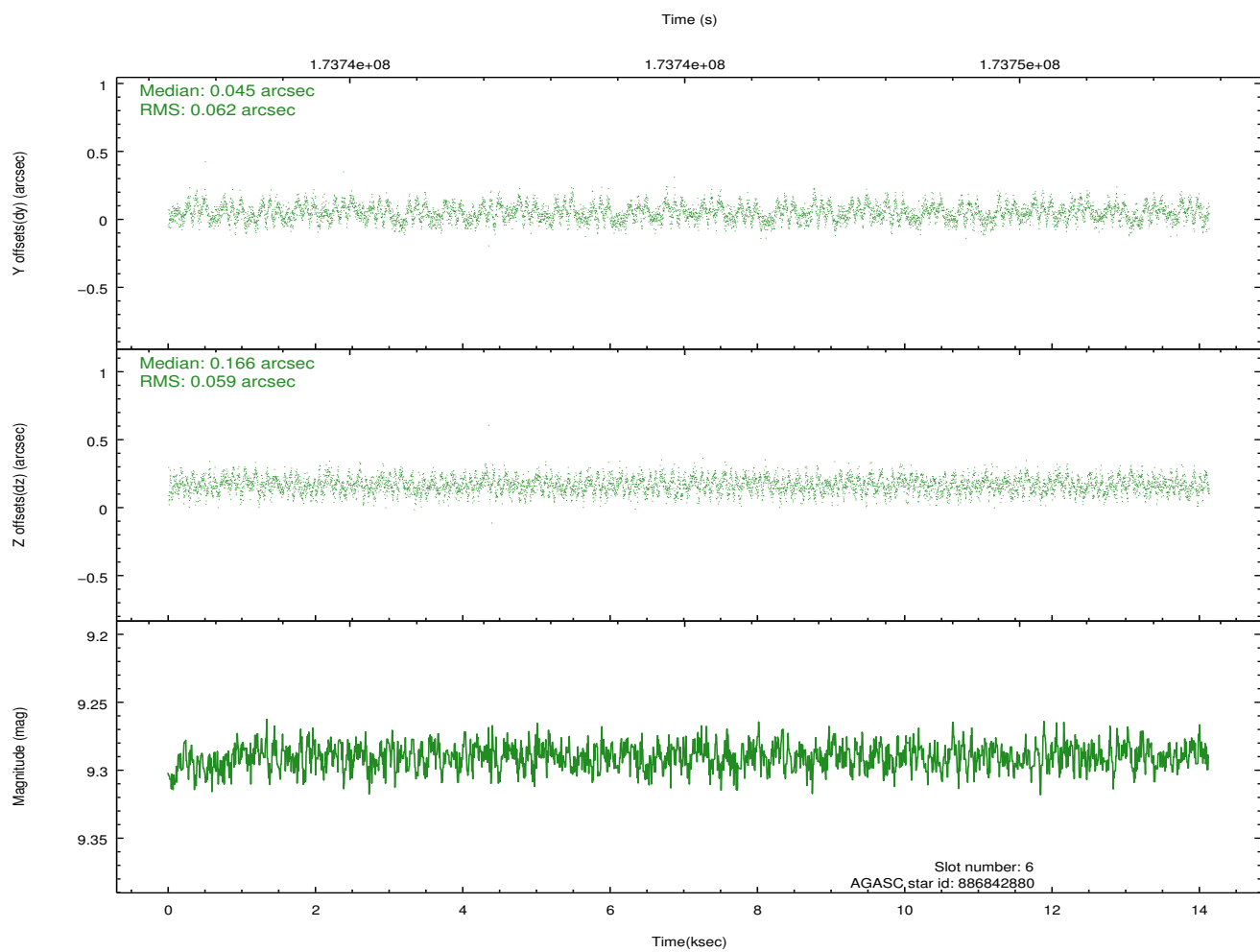
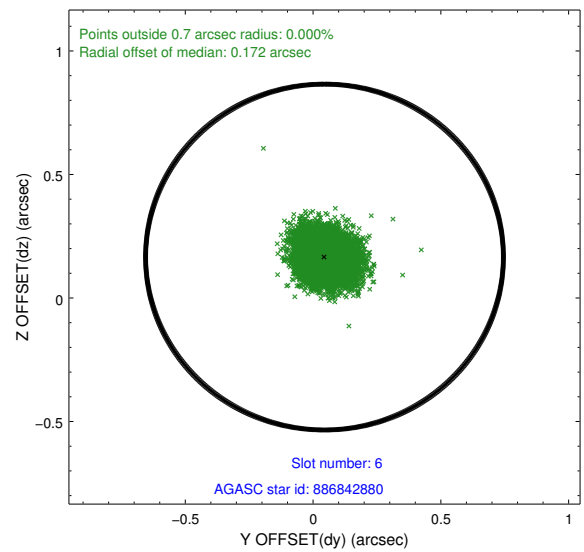
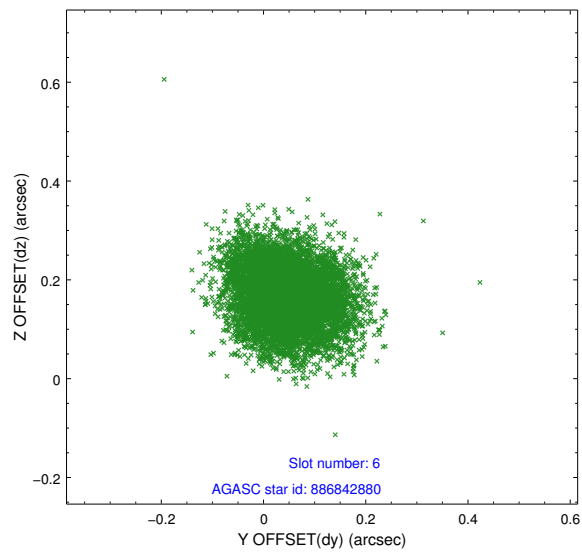
2.4.2 Slot 4



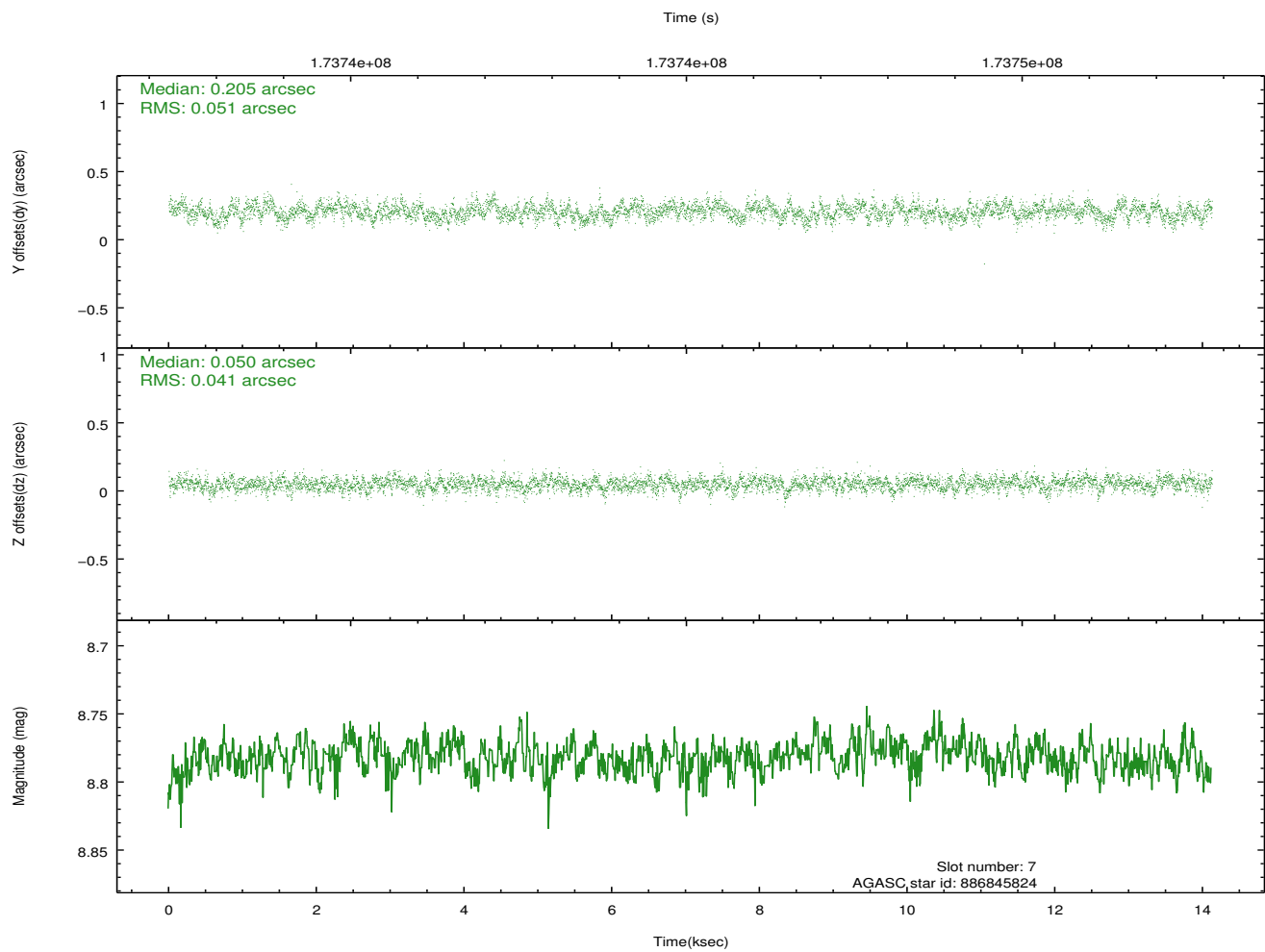
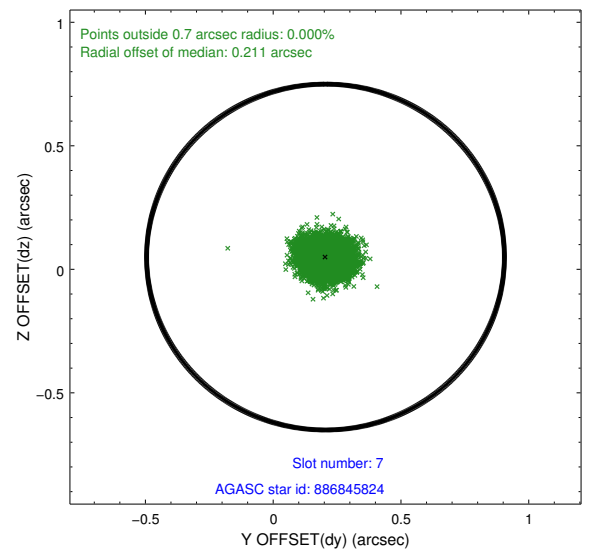
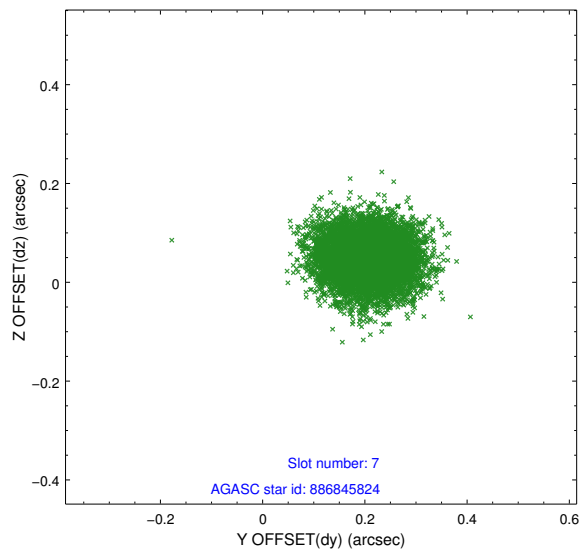
2.4.3 Slot 5



2.4.4 Slot 6

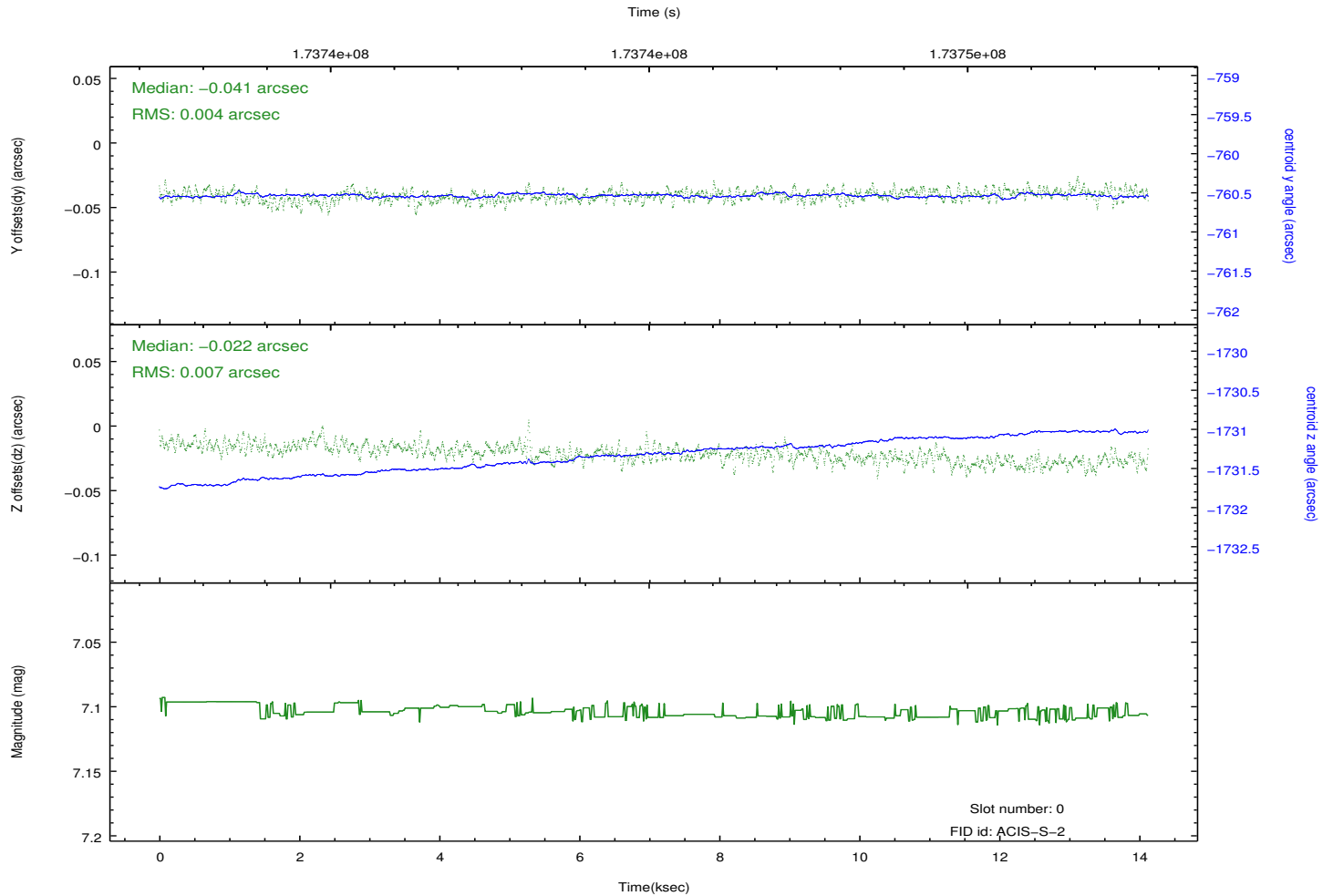
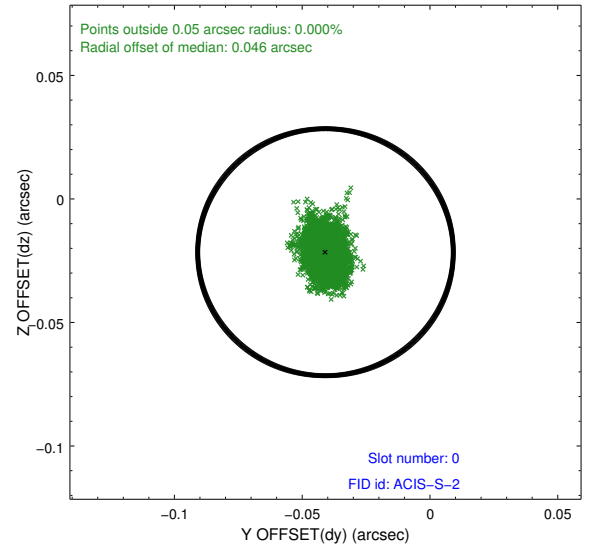
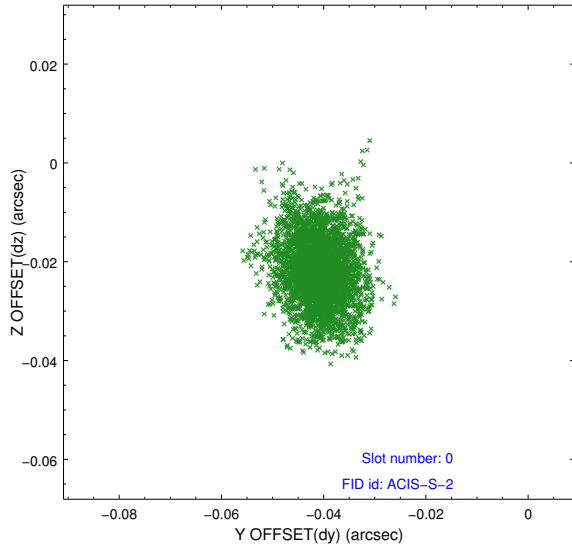


2.4.5 Slot 7

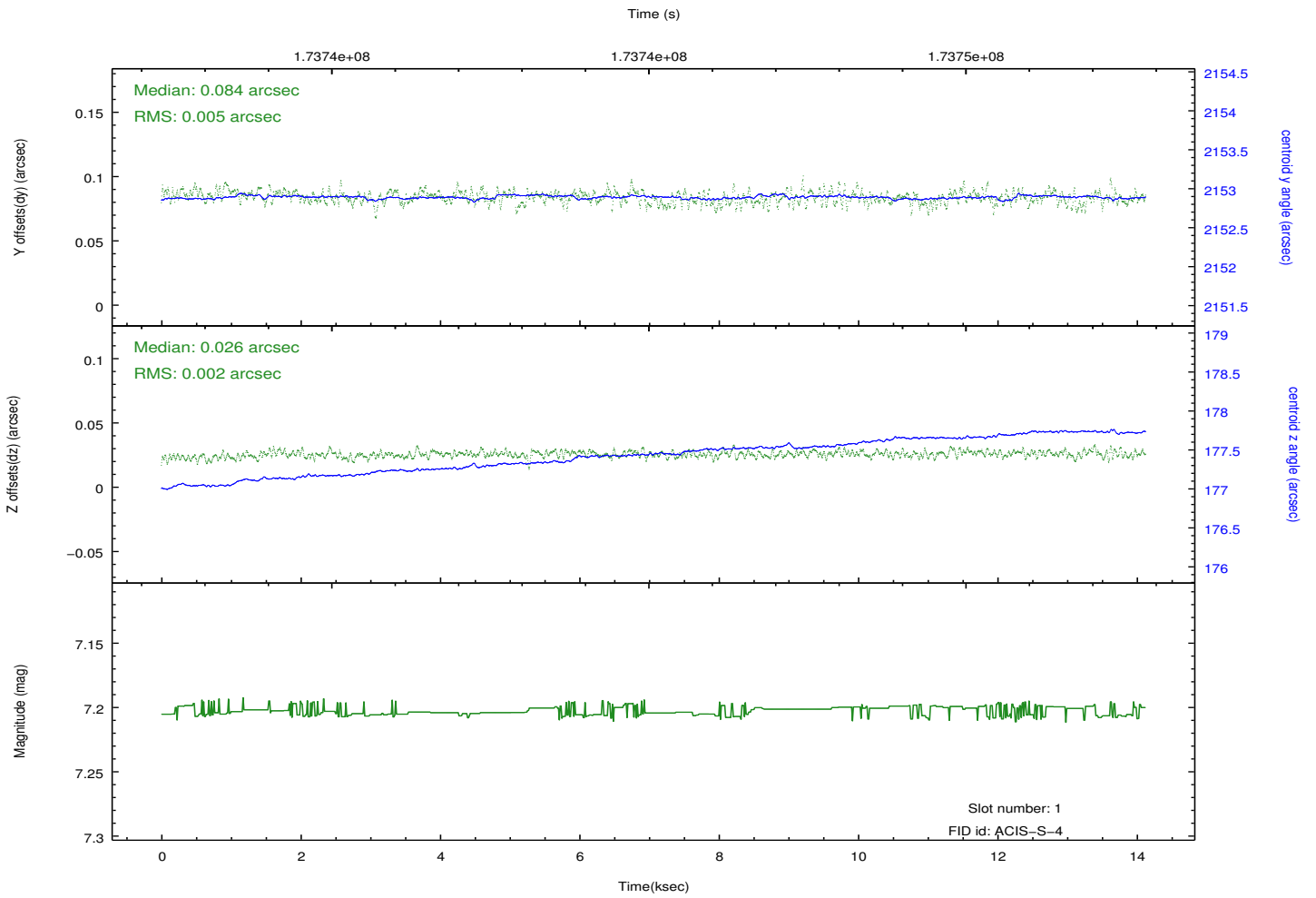
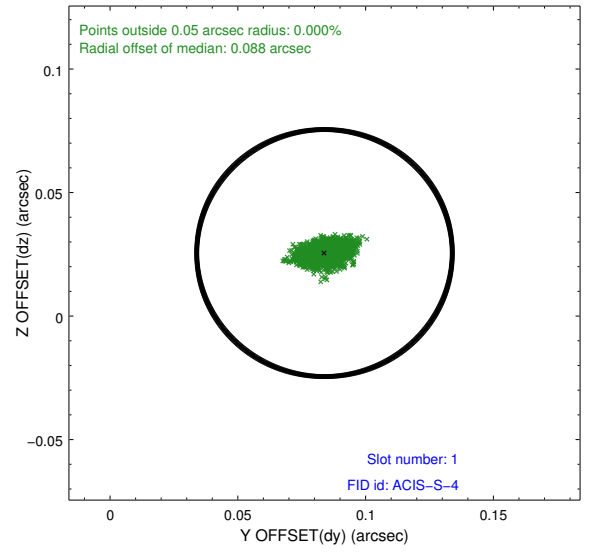
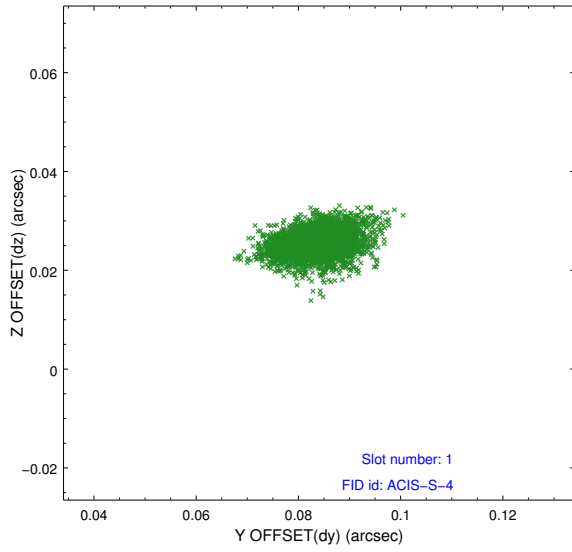


2.5 FID Slots

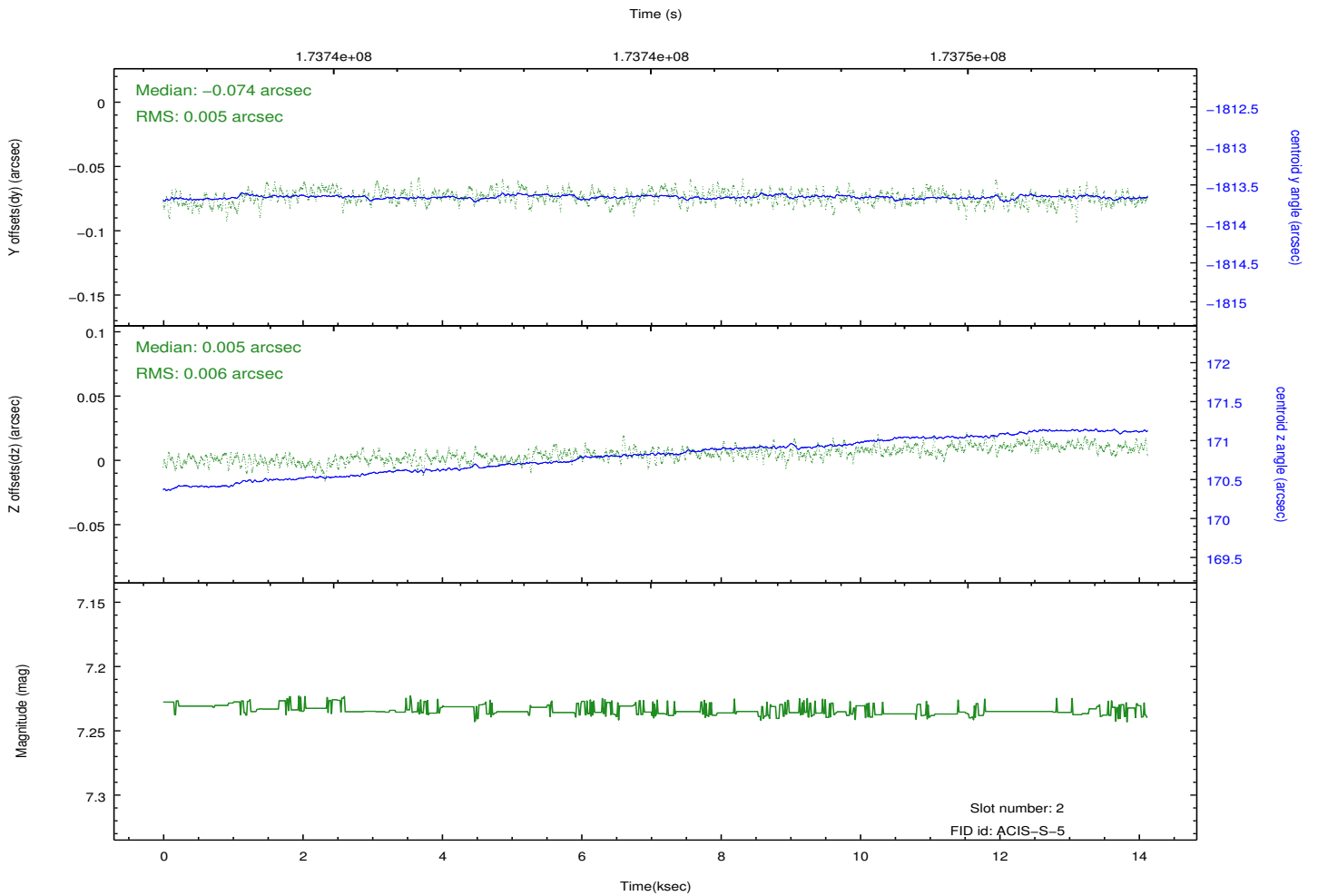
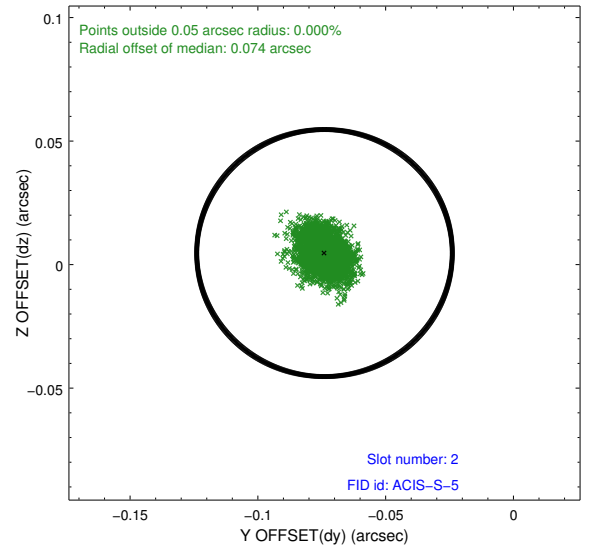
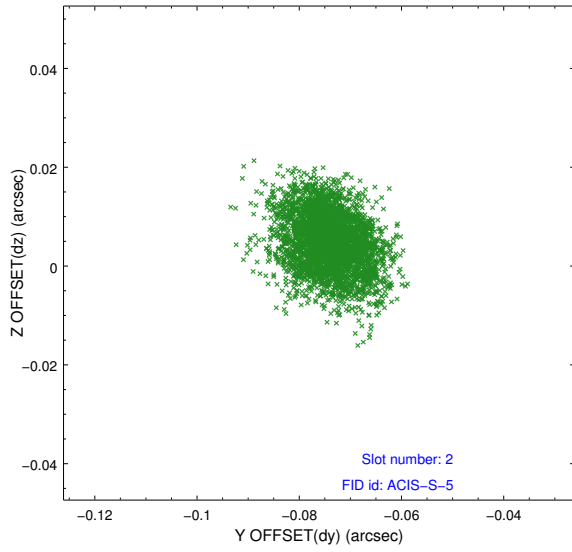
2.5.1 Slot 0



2.5.2 Slot 1



2.5.3 Slot 2



A Summary

A.1 Status

V&V Scientist	Jen Lauer
V&V Date (YYYY-MM-DD)	2012.11.16
V&V Edition	1
V&V Disposition and Status	OK
V&V Charge Time	14.127

A.2 Comments