

V&V Reference Report

L2 ASCDS Version : 8.4.5

Observation 4001 - L2 Version 3
Chandra X-Ray Center

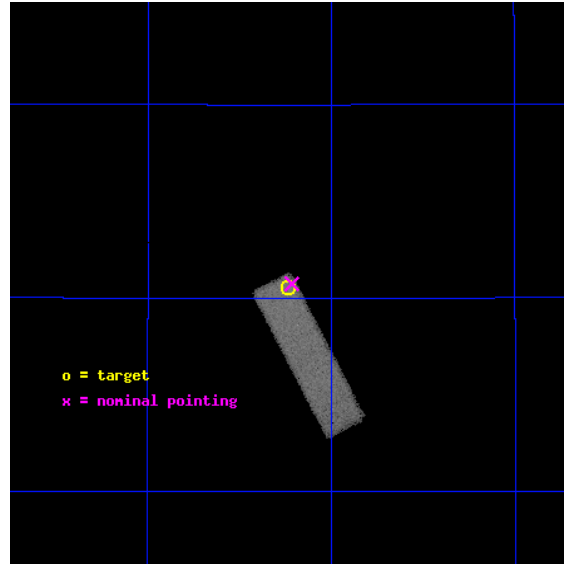
L2 Processing Date : Nov 4 2012

Contents

1	Front	2
2	OBI	3
2.1	OBI	3
2.1.1	Images	3
2.1.2	Bias	3
2.1.3	Parameters	4
2.1.4	Events	4
2.2	Compared Parameters	5
2.3	Aspect	6
2.4	Star Slots	9
2.4.1	Slot 3	9
2.4.2	Slot 4	10
2.4.3	Slot 5	11
2.4.4	Slot 6	12
2.4.5	Slot 7	13
2.5	FID Slots	14
2.5.1	Slot 0	14
2.5.2	Slot 1	15
2.5.3	Slot 2	16
A	Summary	17
A.1	Status	17
A.2	Comments	17

1 Front

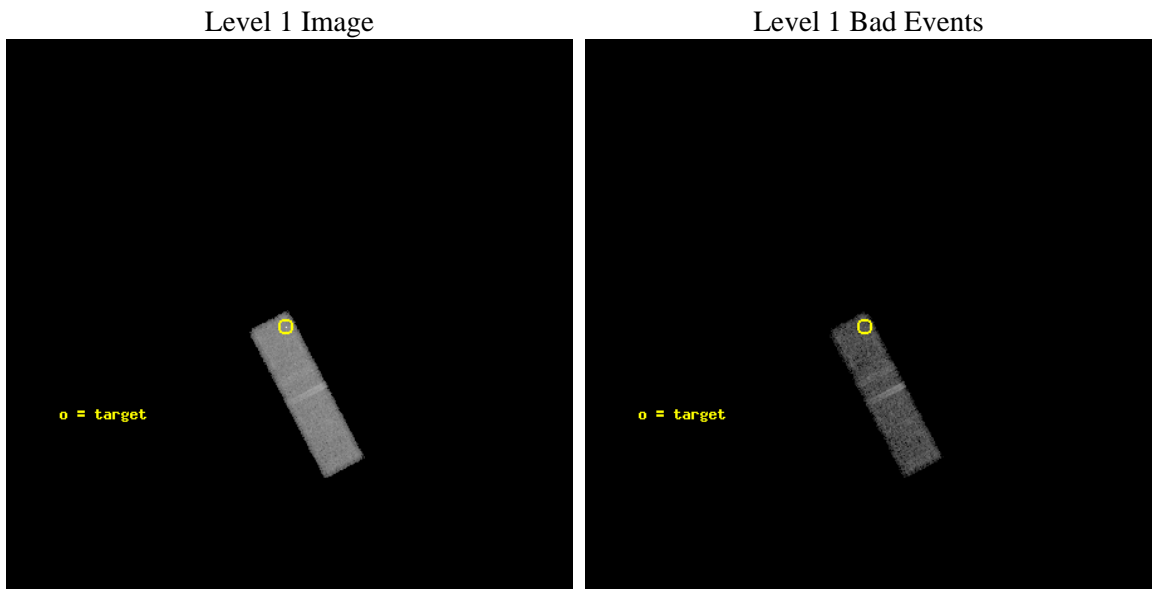
seq_num	700680	Sequence number
obs_id	4001	Observation id
title	THE NATURE OF THE ``COMPOSITE" SEYFERT/STAR-FORMING GALAXIES	Pr
observer	Dr Anna Wolter	Principal investigator
object	IRAS01072+4954	Source name
dtcycle	0	
cycle	P	events from which exps? Prim/Second/Both
ra_targ	17.55875	Observer's specified target RA [deg]
dec_targ	50.175583	Observer's specified target Dec [deg]
ra_nom	17.554123314475	Nominal RA [deg]
dec_nom	50.179172657545	Nominal Dec [deg]
roll_nom	152.5459993157	Nominal Roll [deg]
revision	3	Processing version of data
ontime	24494.359354943	Sum of GTIs [s]
liveltime	23299.114767377	Livetime [s]
ontime3	24494.359354943	Sum of GTIs [s]
l2events	38432	Number of level 2 events



2 OBI

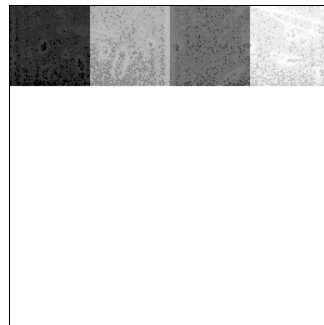
2.1 OBI

2.1.1 Images



2.1.2 Bias

Chip 3



2.1.3 Parameters

obi_num	0	Obi number	sched_exp_time	24313.909000	[s] Scheduled observation exposure time
ascdsver	8.4.5	Processing system revision	ontime	24494.359354943	Sum of GTIs [s]
caldbver	4.5.2	 	ontime3	24494.359354943	Sum of GTIs [s]
date	2012-11-04T11:21:29	Date and time of file creation	l1events	87854	Number of level 1 events
revision	3	Processing version of data			

2.1.4 Events

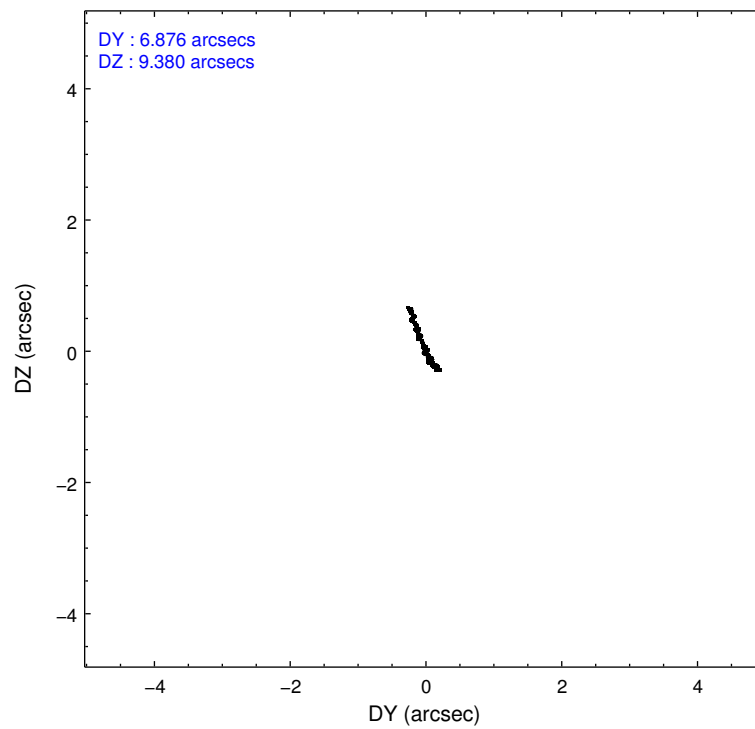
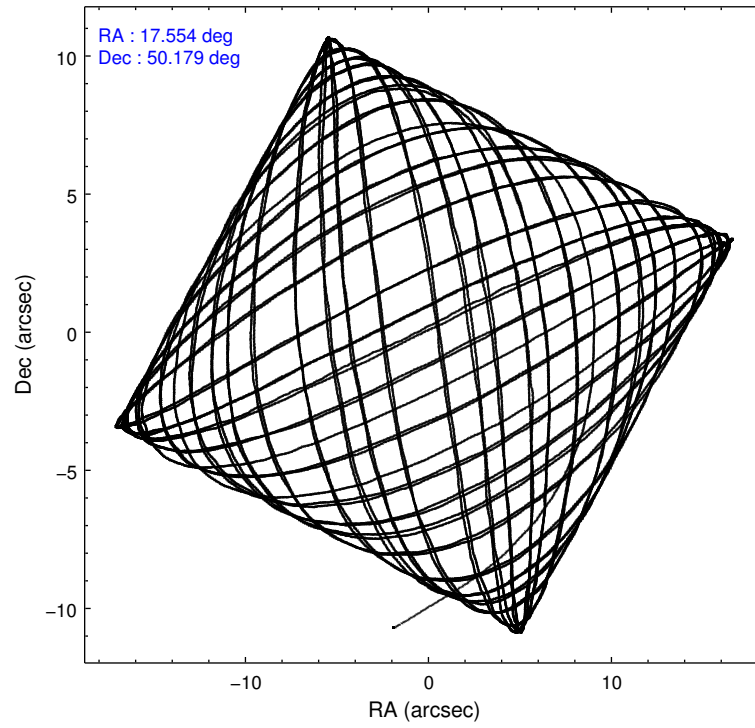
	ccd 3
level 1 events	87854
rejected events	47753
rejected %	54%

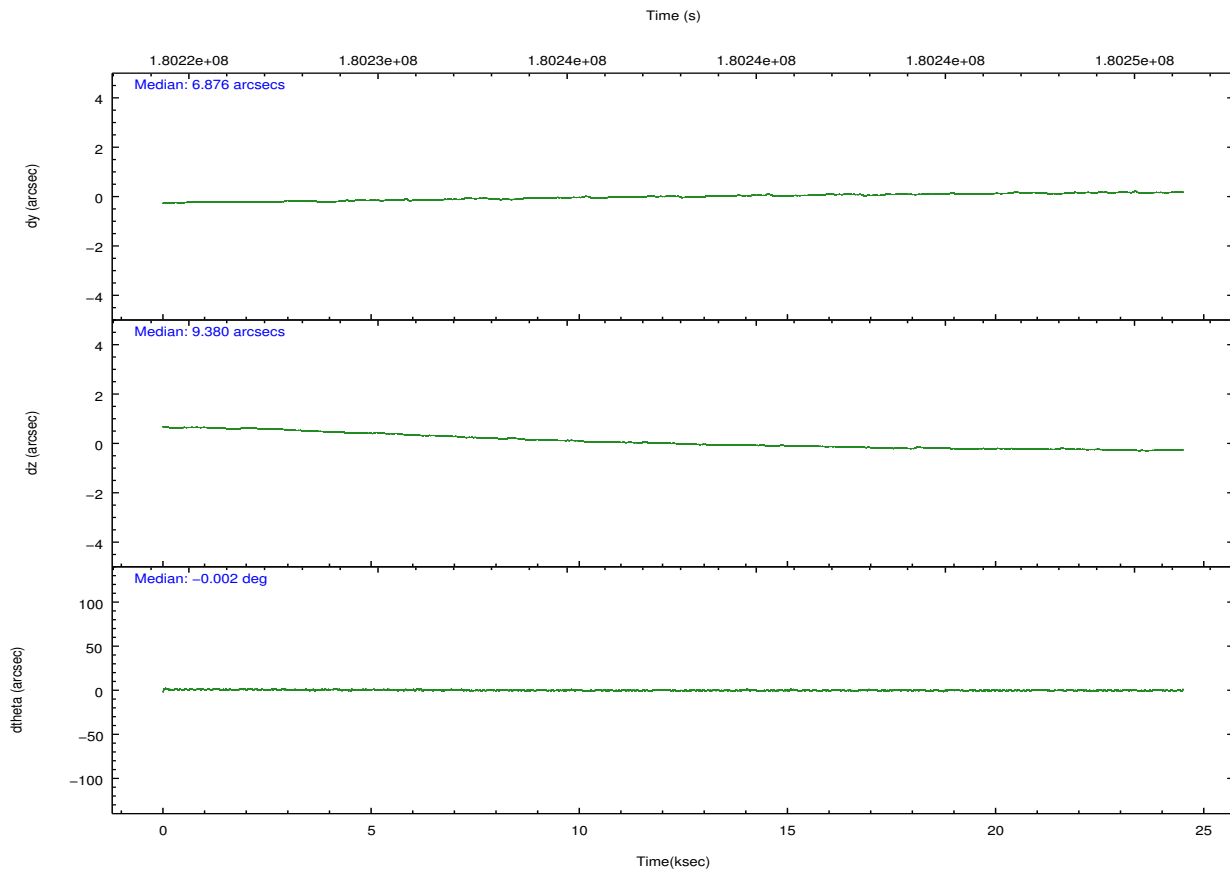
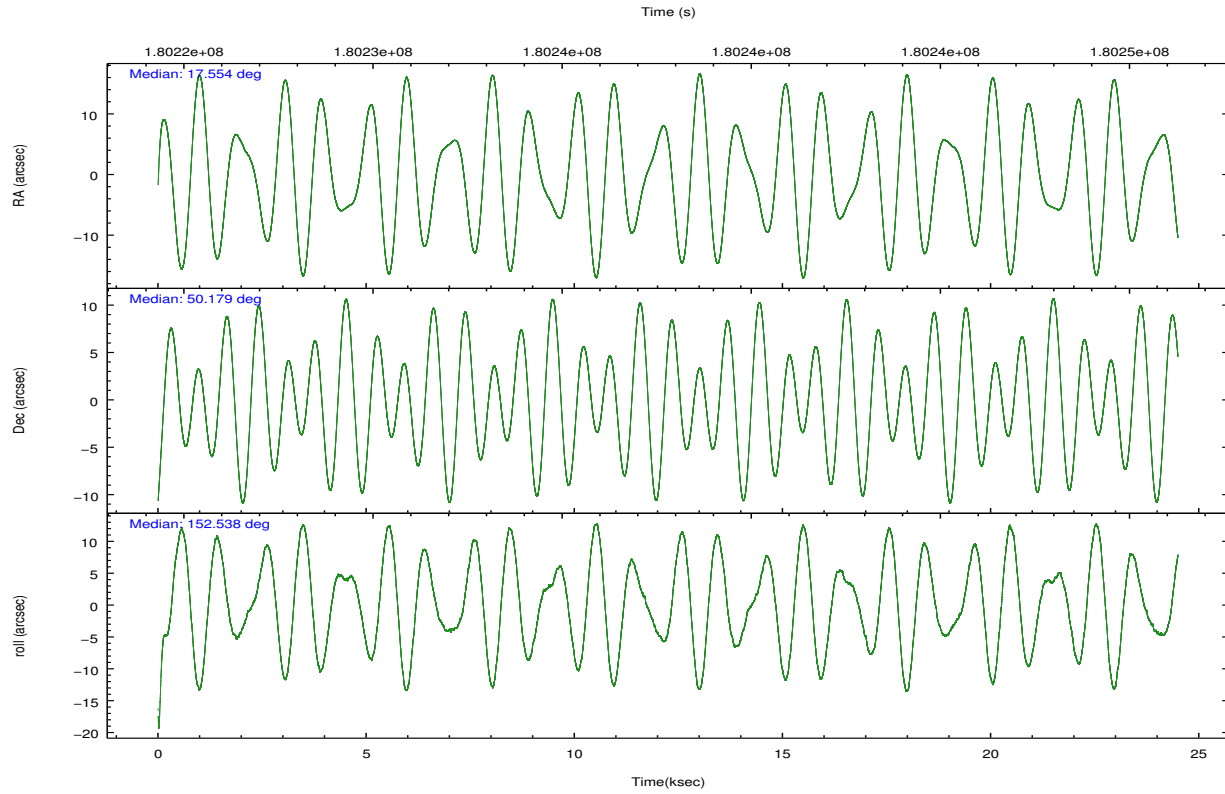
	ccd 3
grade 0 events	27083
	30%
grade 1 events	93
	0%
grade 2 events	5664
	6%
grade 3 events	2069
	2%
grade 4 events	1975
	2%
grade 5 events	1910
	2%
grade 6 events	3510
	3%
grade 7 events	45550
	51%

2.2 Compared Parameters

Parameter	Planned	Actual	Parameter	Planned	Actual
Instrument	ACIS	ACIS	Obspar format version number	7	7
Detector	ACIS-3	ACIS-3	Obspar file type	PREDICTED	ACTUAL
Grating	NONE	NONE	Obspar update status	NONE	UPDATED
Data mode	FAINT	FAINT	Number of optional ACIS chips dropped	0	0
Observation mode	POINTING	POINTING	On-chip summing requested	N	N
[deg] Pointing RA	17.596847	17.55412331447525	Subarray requested	CUSTOM	1/4
[deg] Pointing Dec	50.180468	50.17917265754526	Subarray start row	769	769
[deg] Pointing Roll	152.304502	152.5459993156964	Subarray row count	256	256
[mm] SIM focus pos	-0.782348	-0.7809083437167272	Alternating exposures requested	N	N
[mm] SIM defocus	0	0.001439871863259334	[s] Primary exposure time	0.000000	0.8
[mm] SIM translation stage pos	-233.592463	-233.5874344608287			
[mm] SIM translation stage offset	0	-0.005018542100998502			
[s] Observation start time (MET)	180225739.184000	180224735.85569			
Observation start date	2003-09-17T22:41:15	2003-09-17T22:25:35			
[s] Observation end time (MET)	180250053.184000	180250367.00679			
Observation end date	2003-09-18T05:26:29	2003-09-18T05:32:47			
Read mode	TIMED	TIMED			

2.3 Aspect



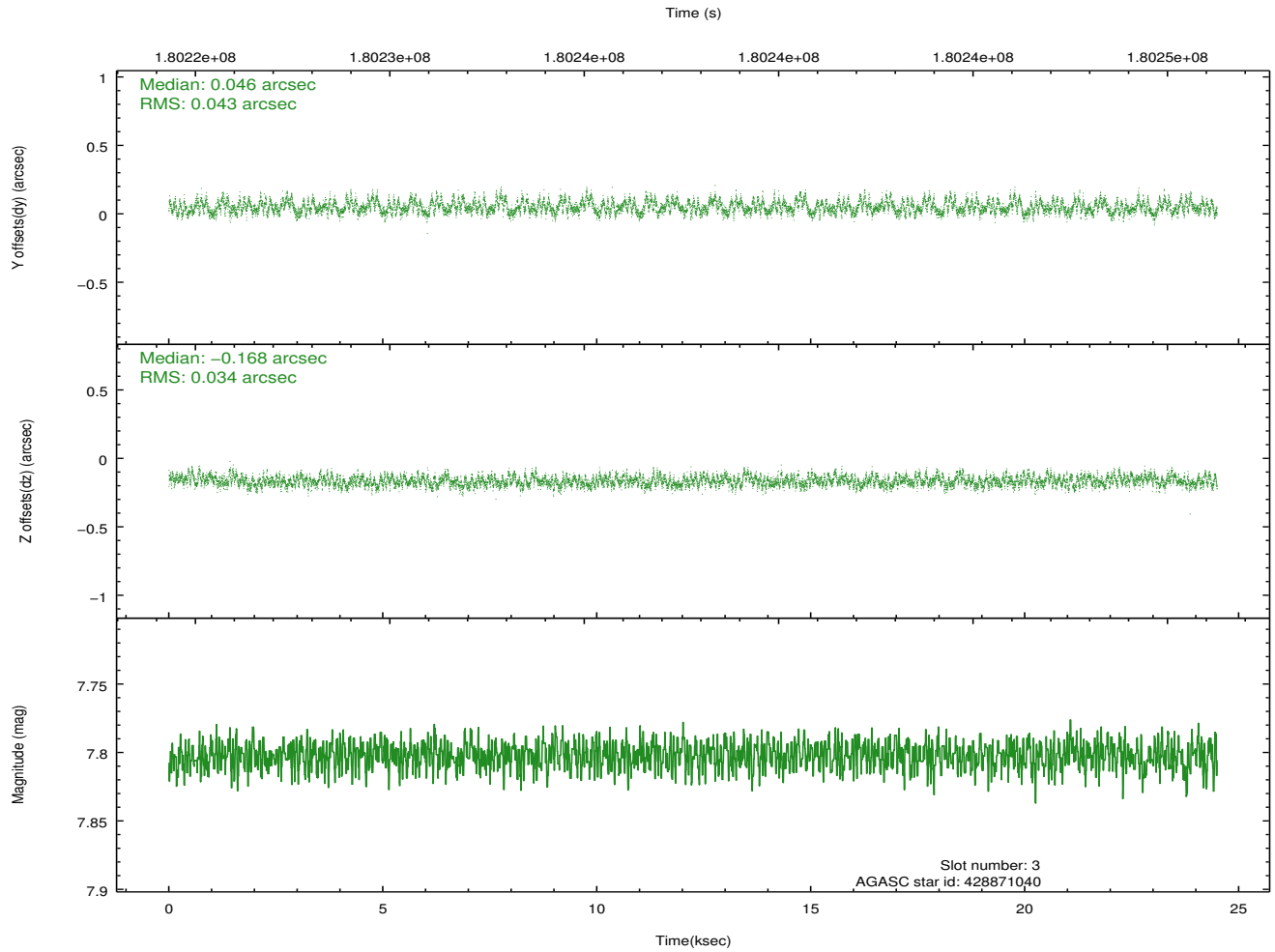
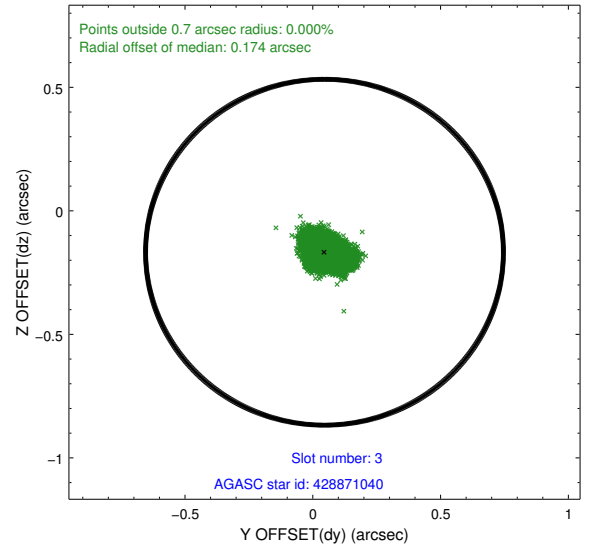
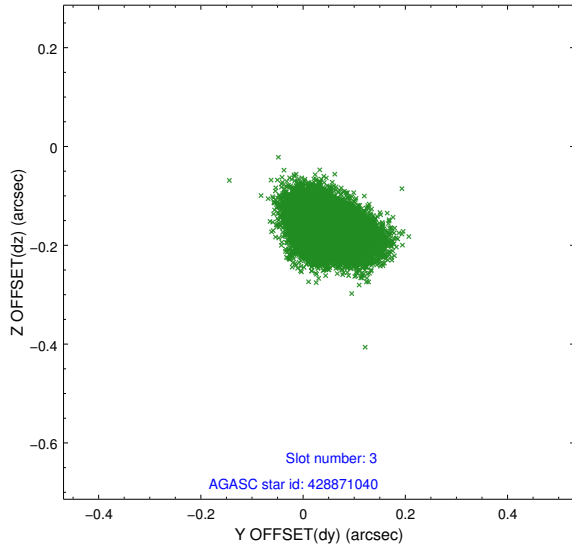


Slot Statistics

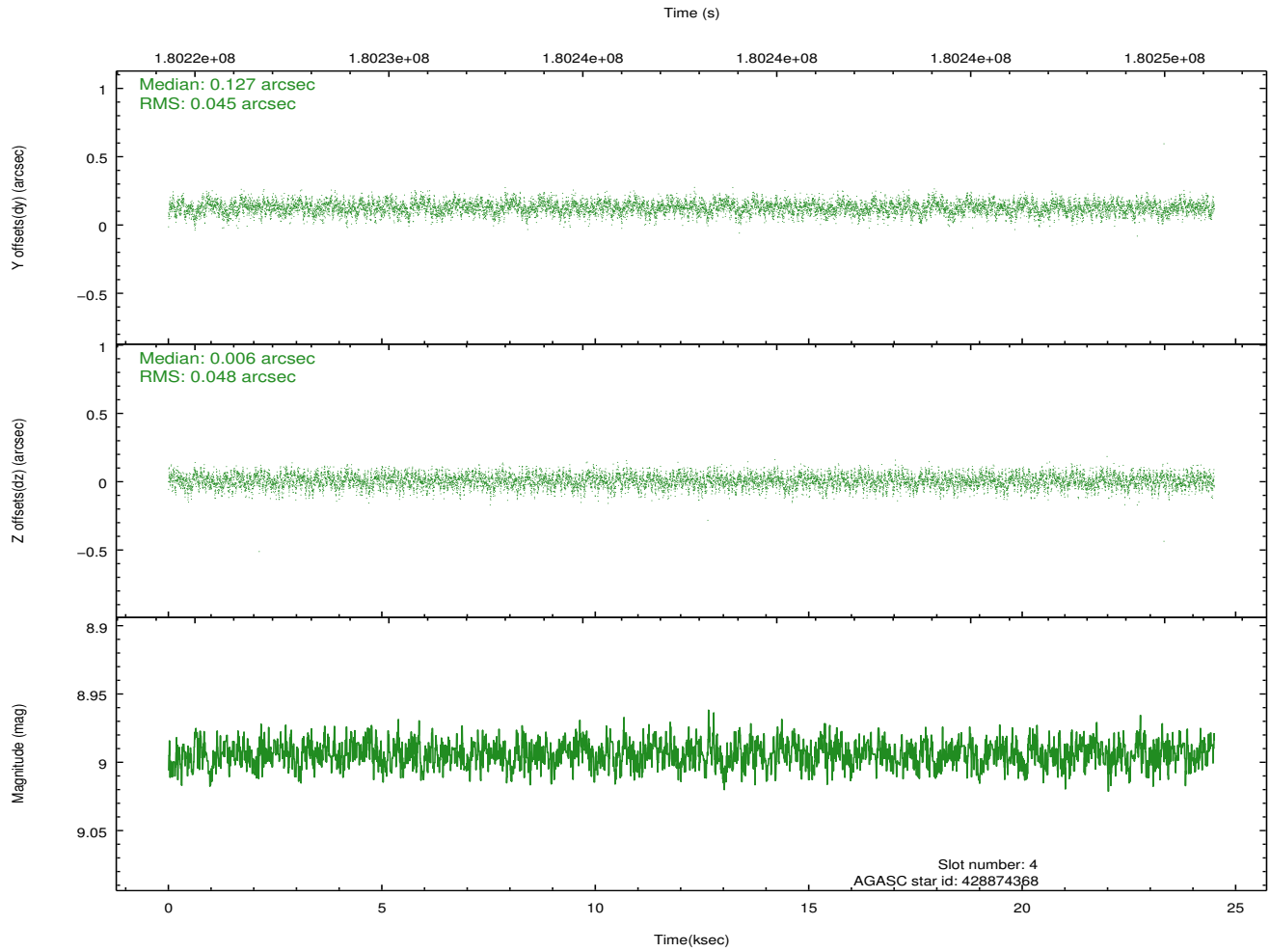
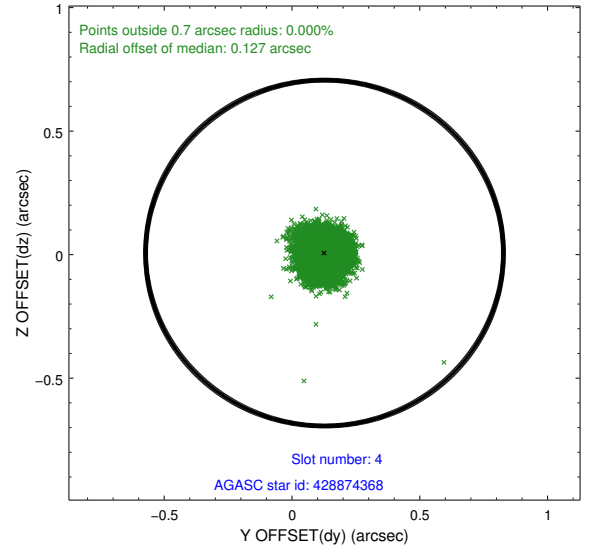
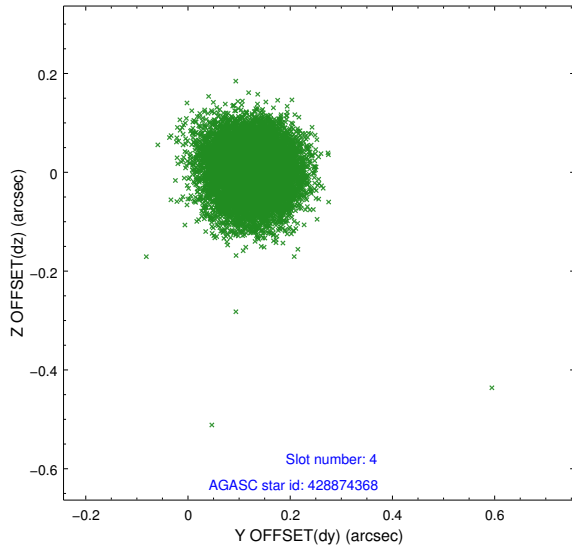
slot	status	id	mag	n_pts	med_dy	med_dz	dr1	dr2	ra	dec	mean_y	mean_z
0	FID	ACIS-I-1	7.24	5975	-0.011	0.048	0.010	0.025	0.000000	0.000000	932.82	-832.87
1	FID	ACIS-I-5	7.23	5975	-0.122	0.025	0.008	0.014	0.000000	0.000000	-1815.34	1064.53
2	FID	ACIS-I-6	7.25	5975	0.043	-0.002	0.012	0.024	0.000000	0.000000	398.27	1709.15
3	GUIDE	428871040	7.80	11950	0.046	-0.168	0.059	0.094	17.915624	49.623873	-1588.76	1427.29
4	GUIDE	428874368	8.99	11944	0.127	0.006	0.070	0.112	18.389000	50.215311	-1552.66	-967.50
5	GUIDE	428876528	8.20	11947	0.043	0.018	0.060	0.097	18.398270	50.103234	-1762.86	-622.61
6	GUIDE	429400088	8.42	11946	-0.076	0.002	0.059	0.096	17.319099	50.712834	1452.11	-1403.21
7	GUIDE	429402920	9.11	11947	-0.142	0.143	0.078	0.125	17.713346	50.809346	818.21	-2127.43

2.4 Star Slots

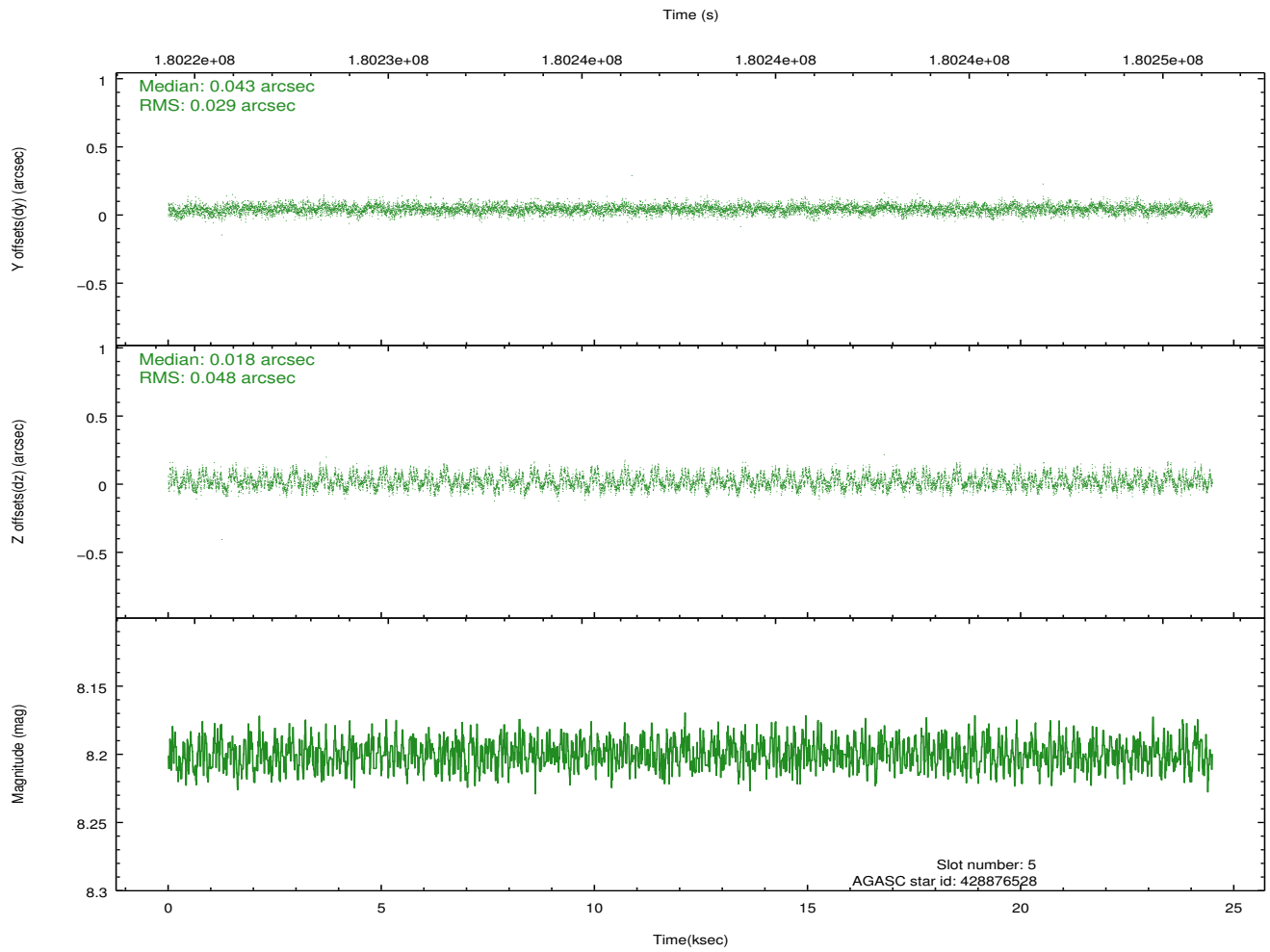
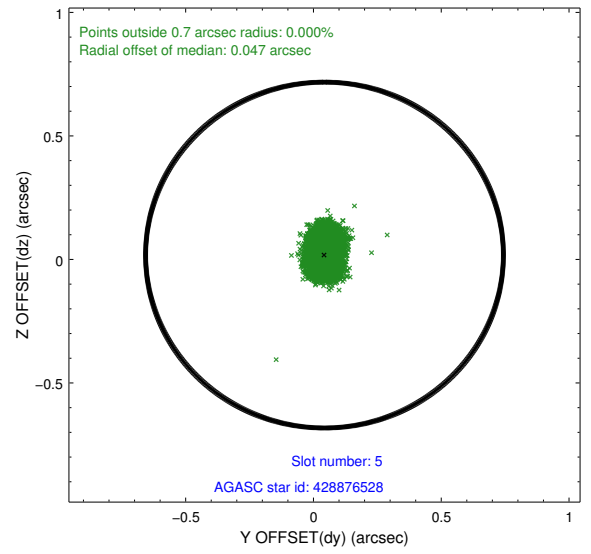
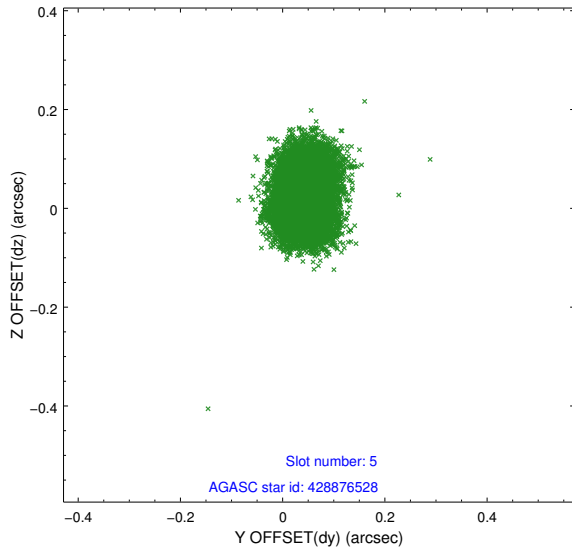
2.4.1 Slot 3



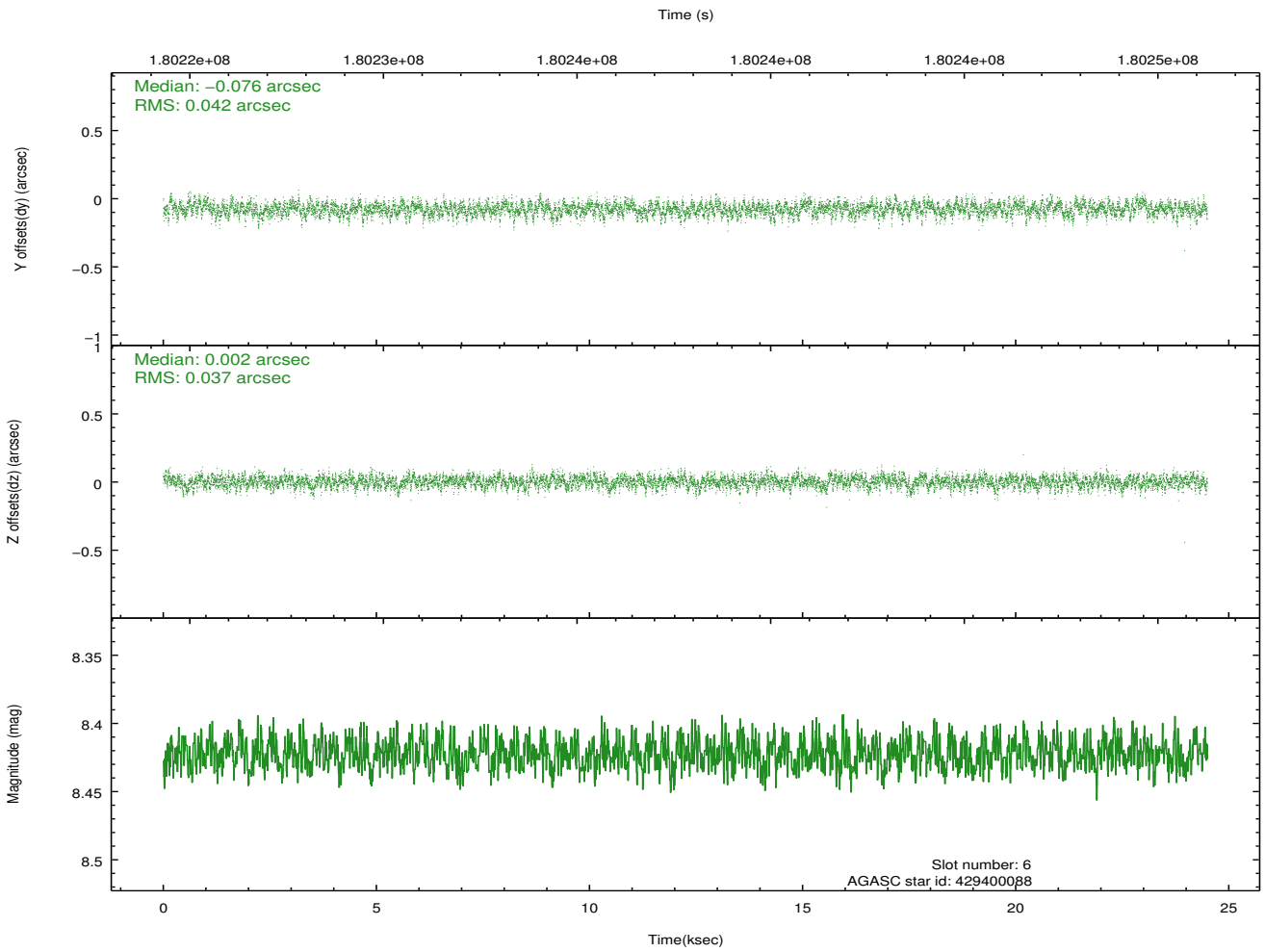
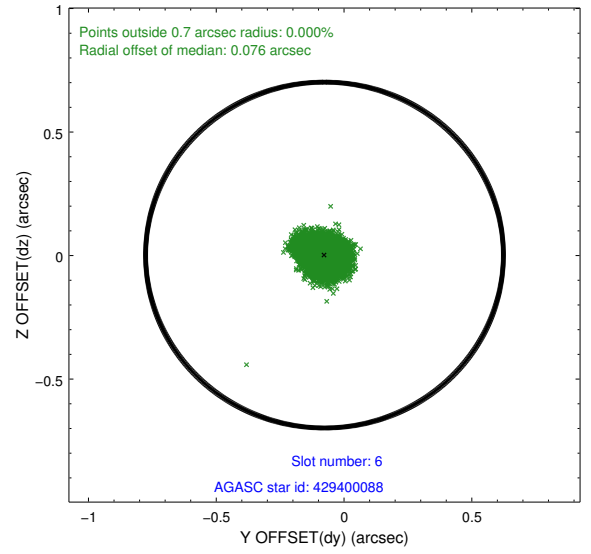
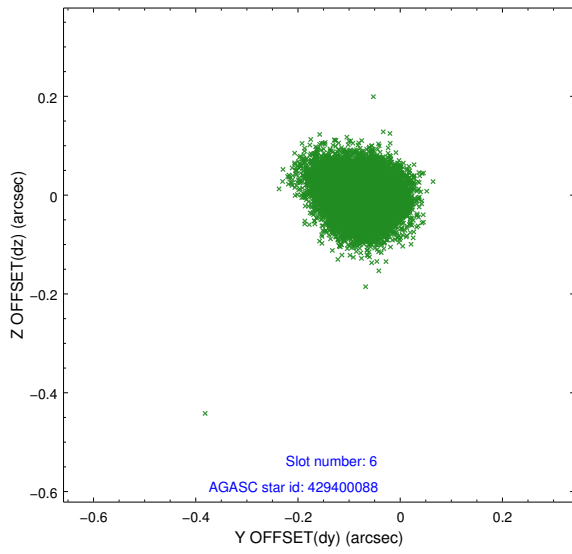
2.4.2 Slot 4



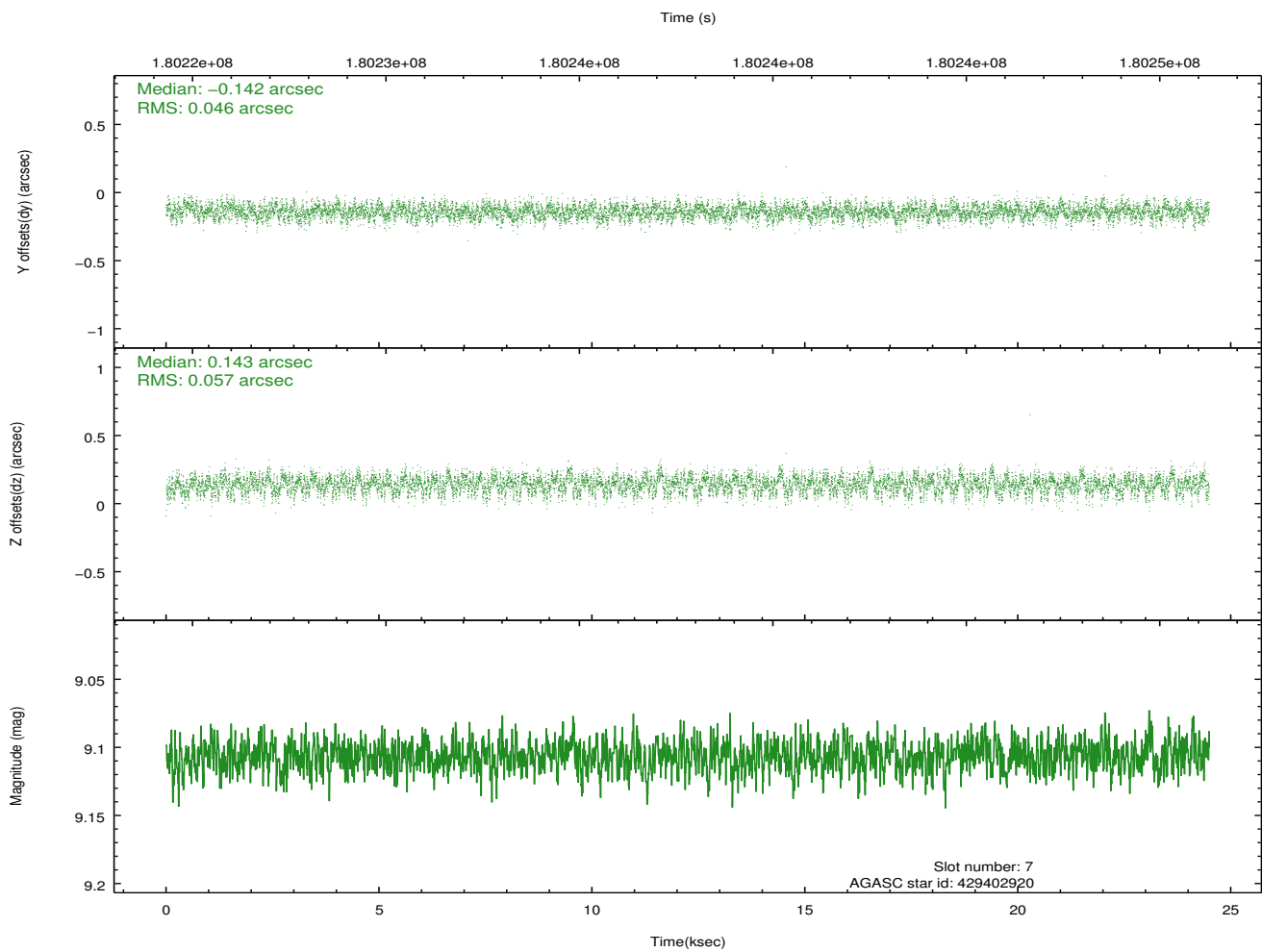
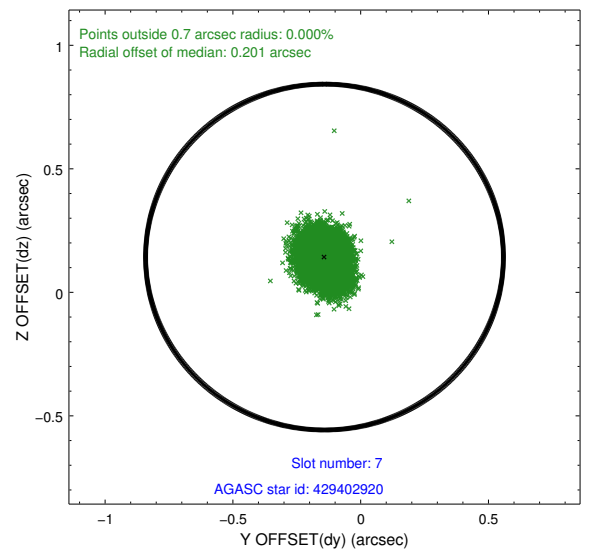
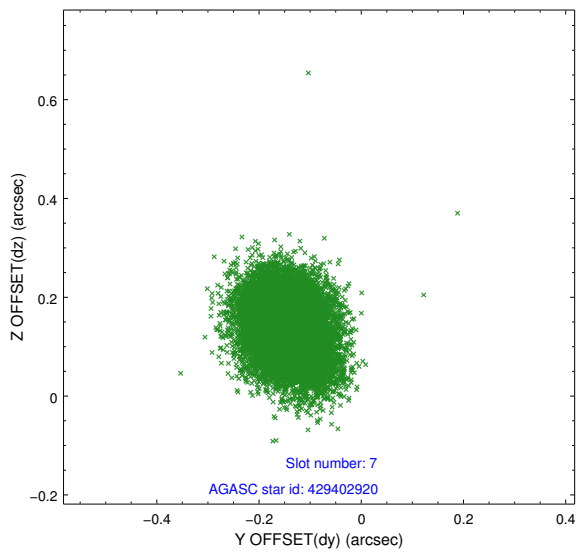
2.4.3 Slot 5



2.4.4 Slot 6

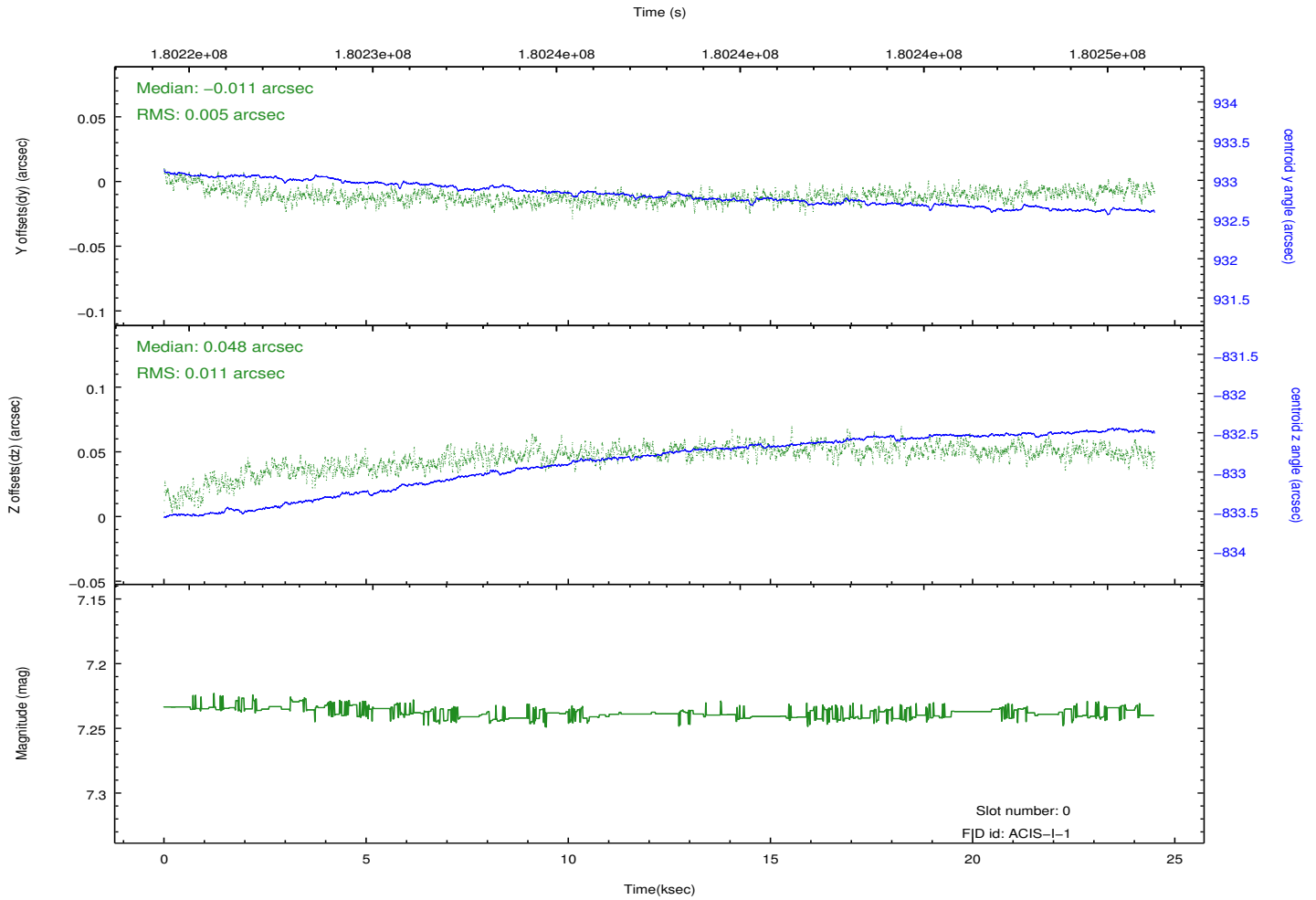
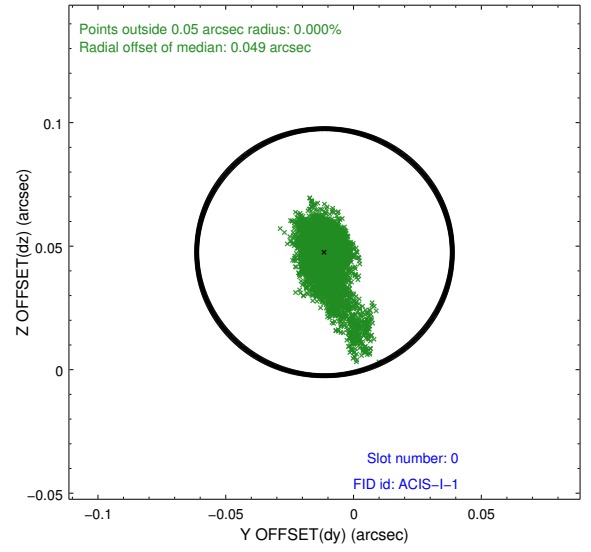
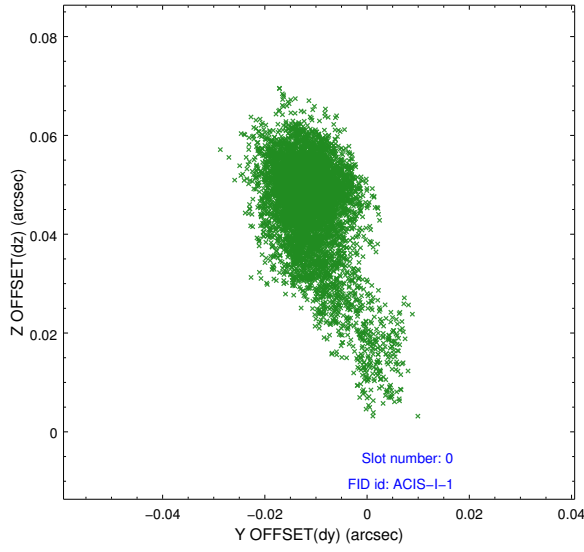


2.4.5 Slot 7

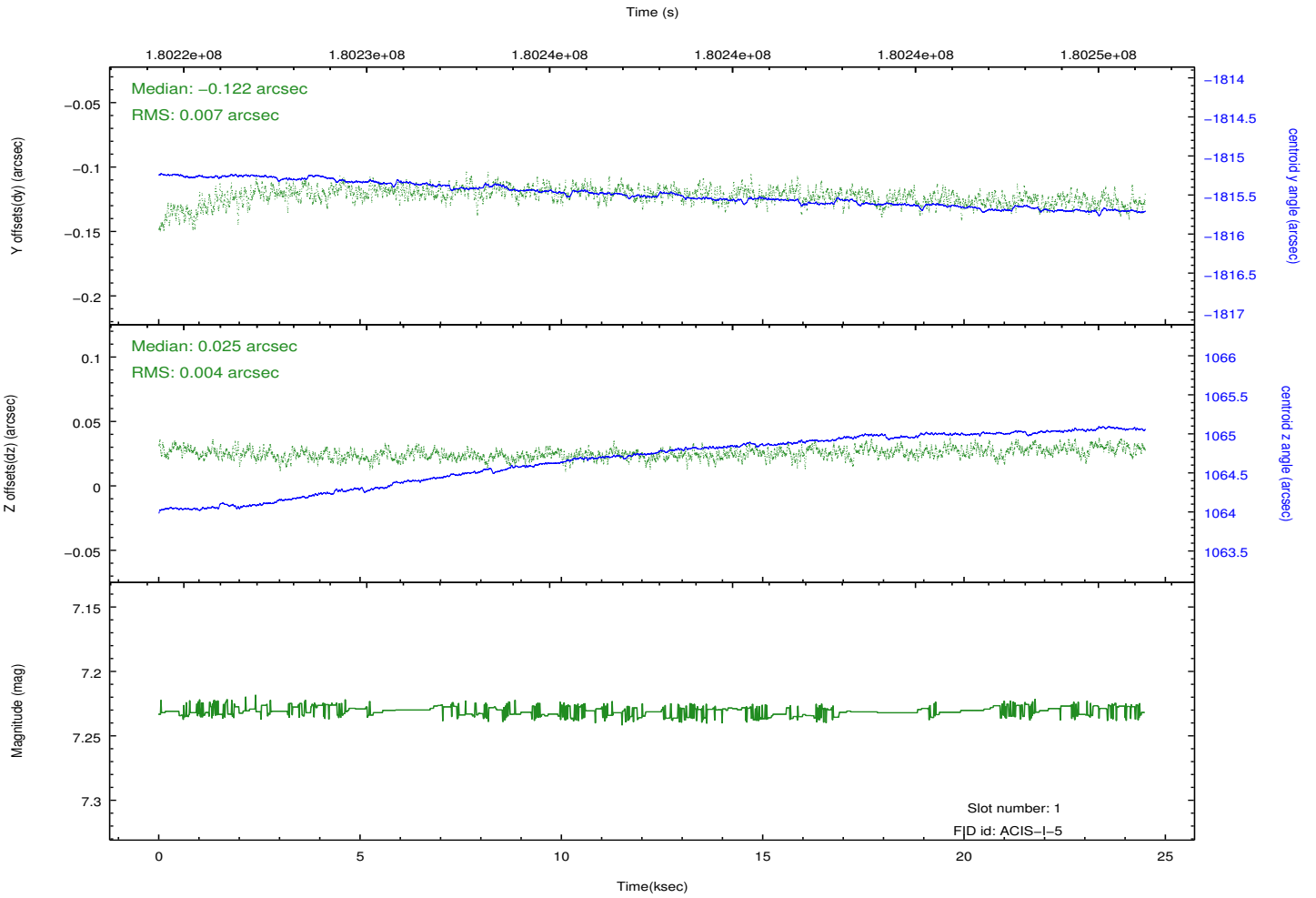
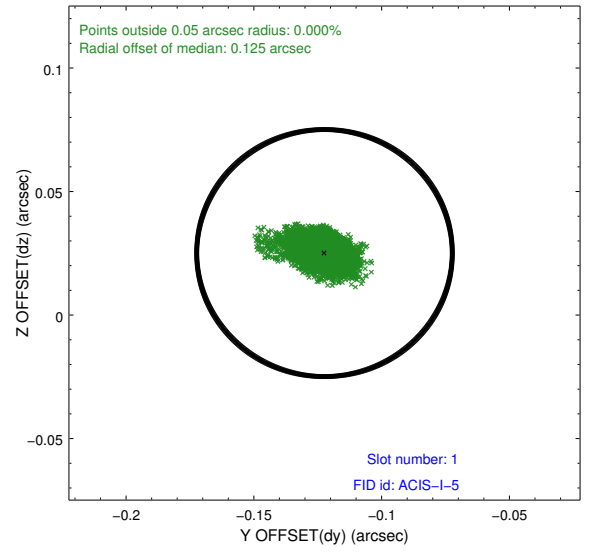
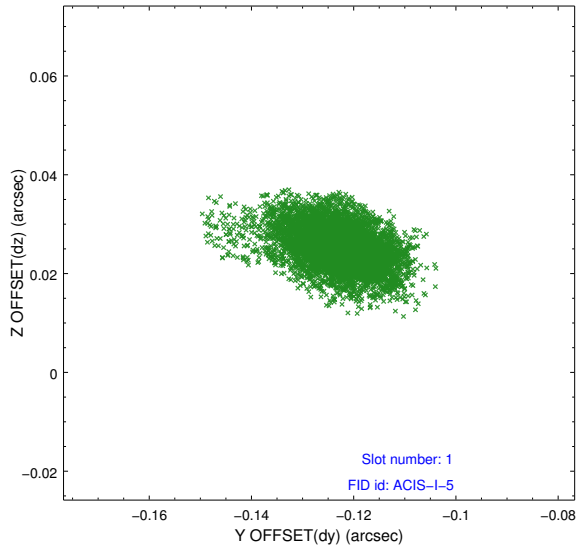


2.5 FID Slots

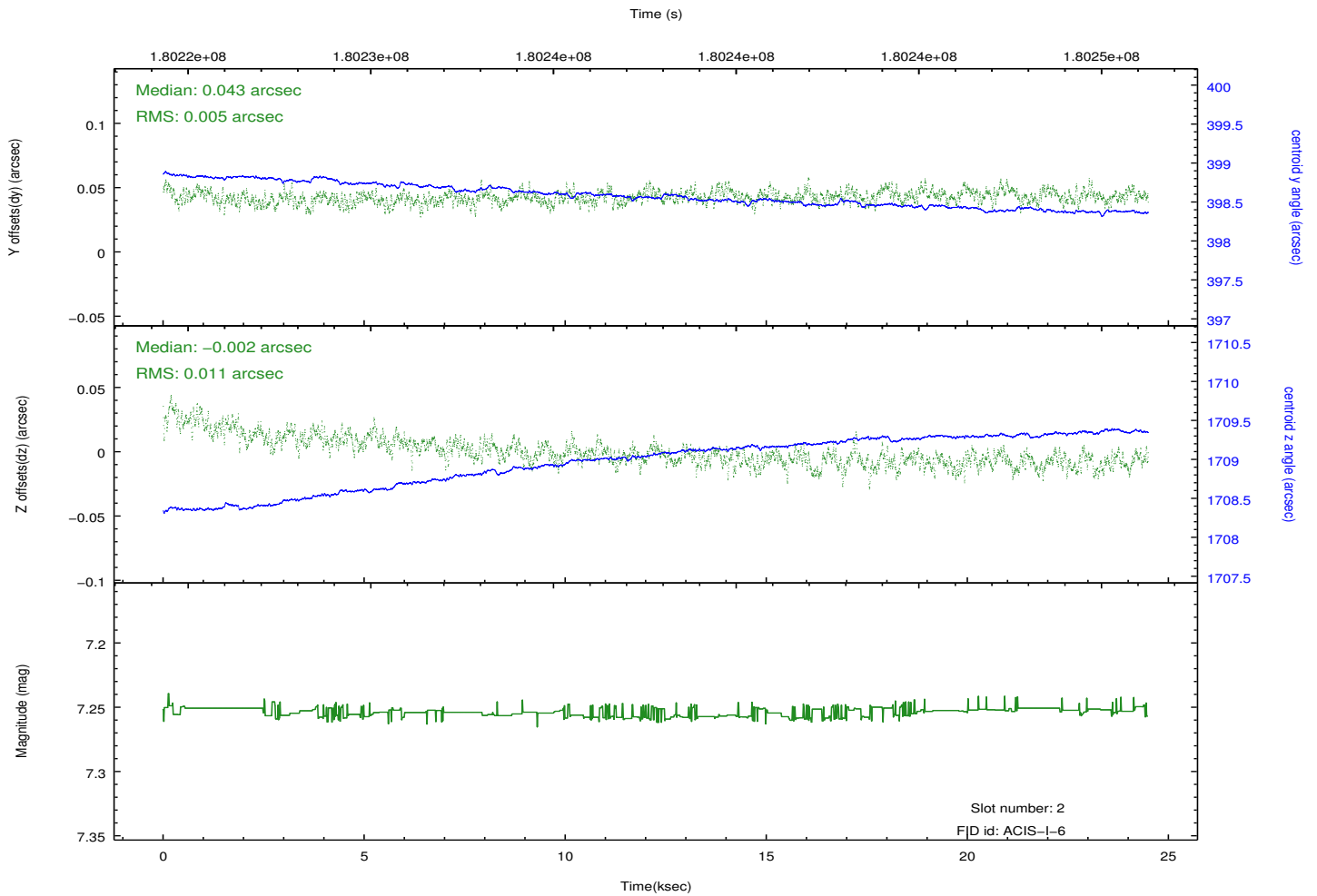
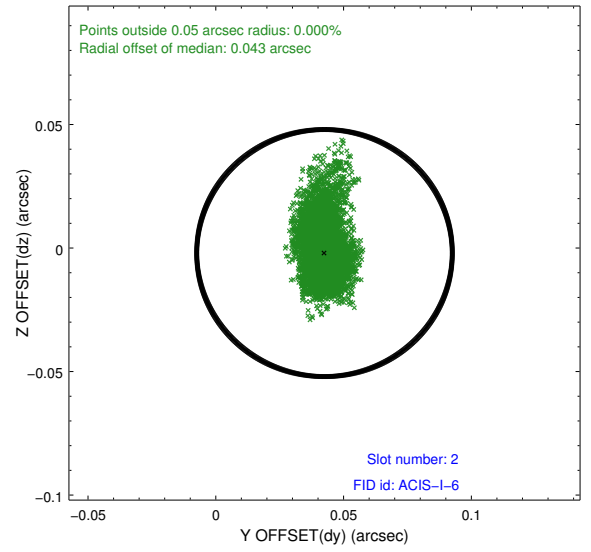
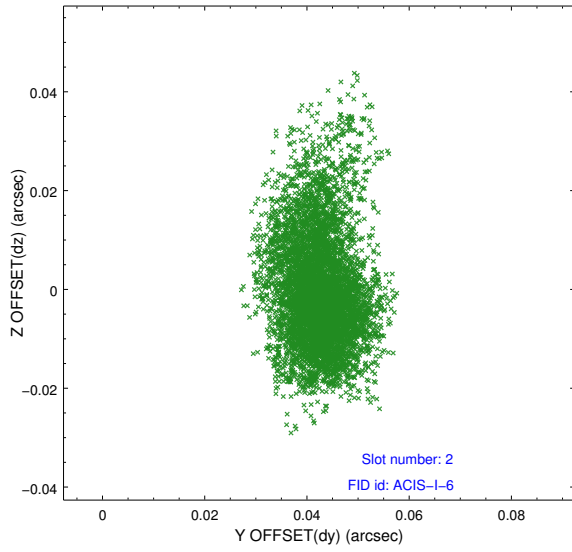
2.5.1 Slot 0



2.5.2 Slot 1



2.5.3 Slot 2



A Summary

A.1 Status

V&V Scientist	Beth Sundheim
V&V Date (YYYY-MM-DD)	2012.11.20
V&V Edition	1
V&V Disposition and Status	OK
V&V Charge Time	24.494

A.2 Comments