

V&V Reference Report

L2 ASCDS Version : 8.4.5

Observation 4161 - L2 Version 4
Chandra X-Ray Center

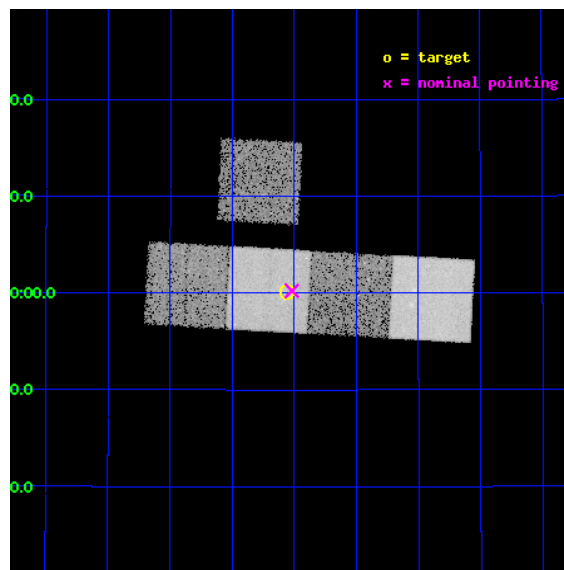
L2 Processing Date : Oct 24 2012

Contents

1	Front	2
2	OBI	3
2.1	OBI	3
2.1.1	Images	3
2.1.2	Bias	3
2.1.3	Parameters	4
2.1.4	Events	4
2.2	Compared Parameters	5
2.3	Aspect	6
2.4	Star Slots	9
2.4.1	Slot 3	9
2.4.2	Slot 4	10
2.4.3	Slot 5	11
2.4.4	Slot 6	12
2.4.5	Slot 7	13
2.5	FID Slots	14
2.5.1	Slot 0	14
2.5.2	Slot 1	15
2.5.3	Slot 2	16
A	Summary	17
A.1	Status	17
A.2	Comments	17

1 Front

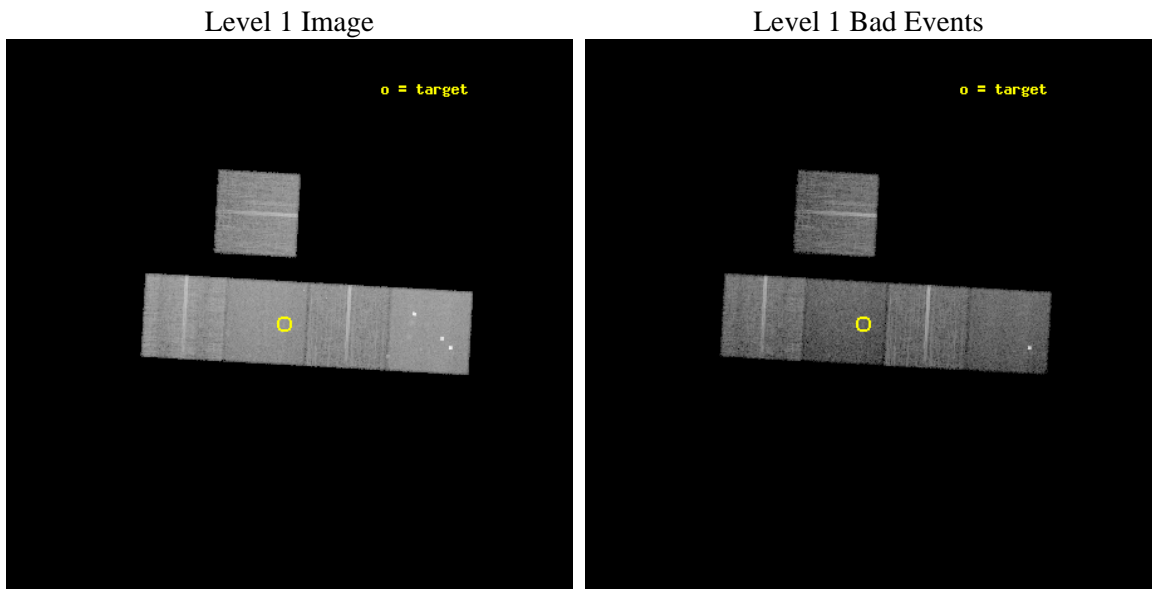
seq_num	800317	Sequence number
obs_id	4161	Observation id
title	A HIGH-REDSHIFT (Z=0.95) CLUSTER REVEALED BY A FIRST BENT-DOUBLE RADIO SOURCE	Proposal title
observer	Dr. CRAIG SARAZIN	Principal investigator
object	BD1137+3000	Source name
dtycycle	0	
cycle	P	events from which exps? Prim/Second/Both
ra_targ	174.390833	Observer's specified target RA [deg]
dec_targ	30.002778	Observer's specified target Dec [deg]
ra_nom	174.37974425605	Nominal RA [deg]
dec_nom	30.003947927973	Nominal Dec [deg]
roll_nom	183.18082664381	Nominal Roll [deg]
revision	4	Processing version of data
ontime	20103.499961317	Sum of GTIs [s]
livetime	19840.832934341	Livetime [s]
ontime3	20103.499961317	Sum of GTIs [s]
ontime5	20103.499961317	Sum of GTIs [s]
ontime6	20100.358981073	Sum of GTIs [s]
ontime7	20103.499961317	Sum of GTIs [s]
ontime8	20100.358961195	Sum of GTIs [s]
l2events	151581	Number of level 2 events



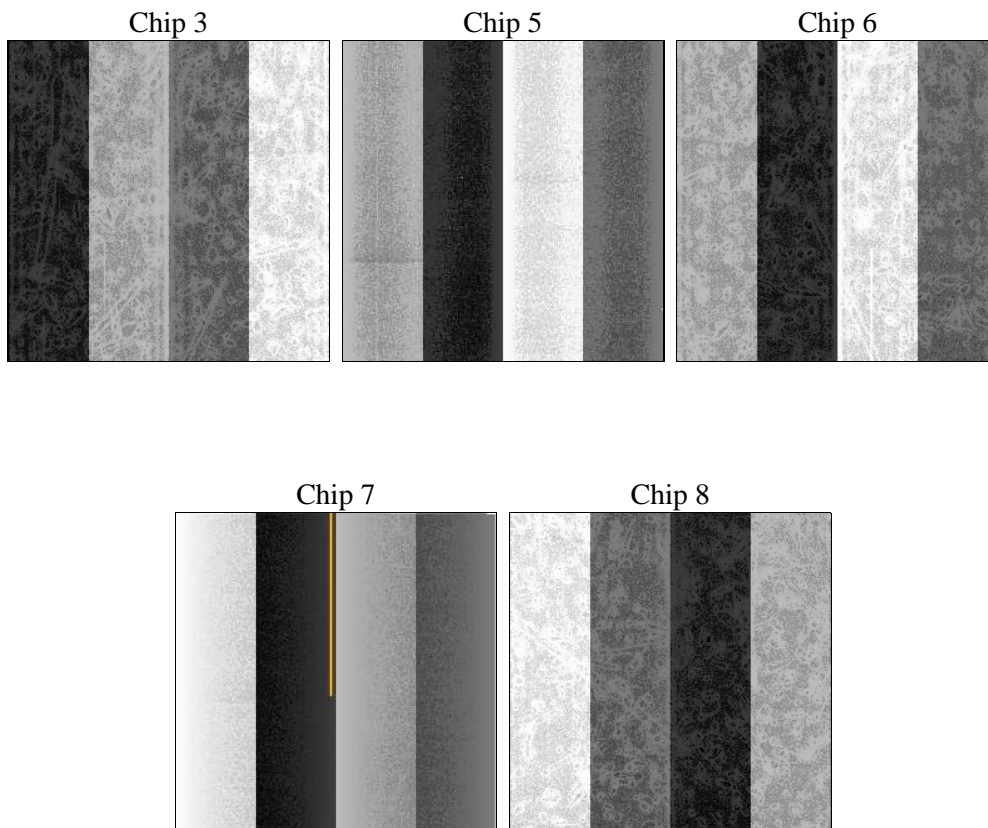
2 OBI

2.1 OBI

2.1.1 Images



2.1.2 Bias



2.1.3 Parameters

obi_num	0	Obi number	sched_exp_time	20000.000000	[s] Scheduled observation exposure time
ascdsver	8.4.5	Processing system revision	ontime	20103.499961317	Sum of GTIs [s]
caldbver	4.5.2	 	ontime3	20103.499961317	Sum of GTIs [s]
date	2012-10-24T19:21:48	Date and time of file creation	ontime5	20103.499961317	Sum of GTIs [s]
revision	4	Processing version of data	ontime6	20100.358981073	Sum of GTIs [s]
			ontime7	20103.499961317	Sum of GTIs [s]
			ontime8	20100.358961195	Sum of GTIs [s]
			l1events	627185	Number of level 1 events

2.1.4 Events

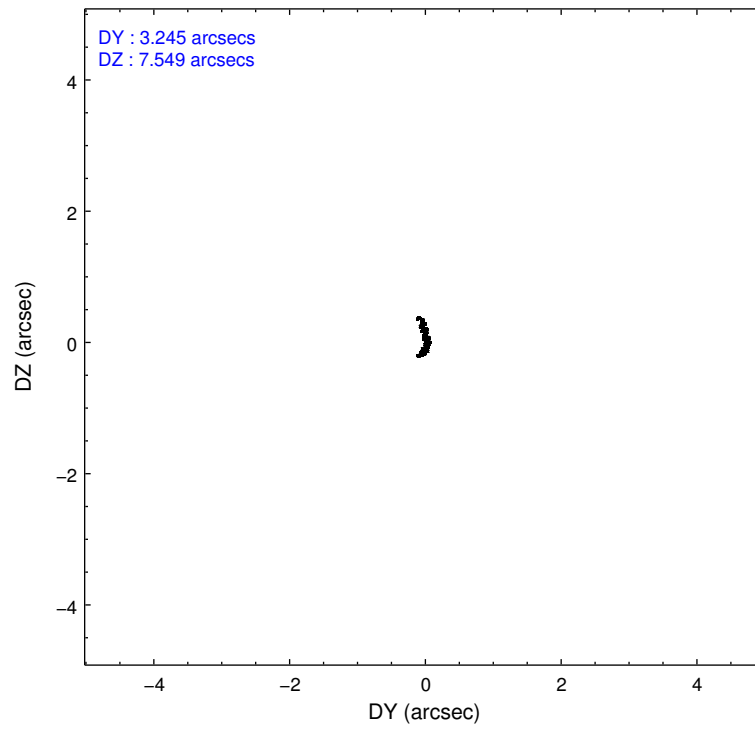
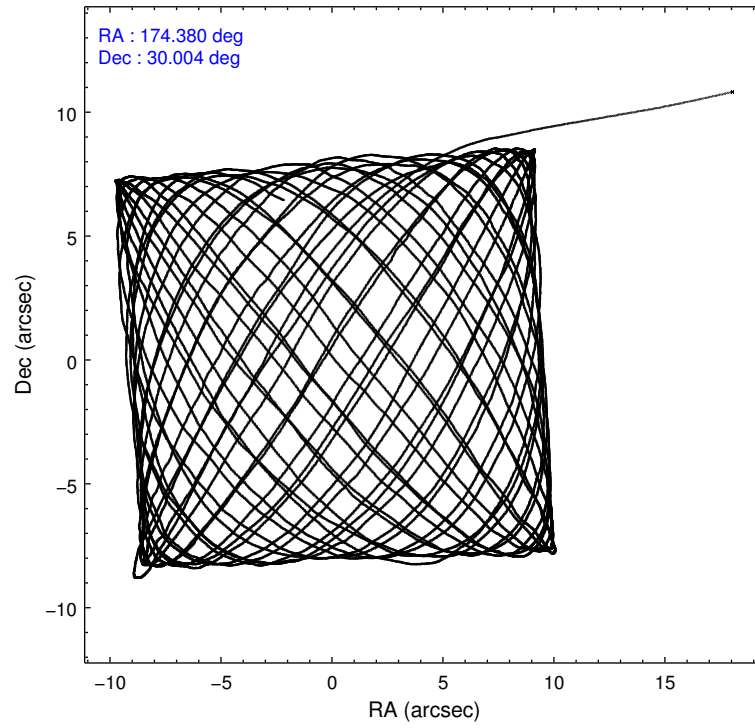
	ccd 3	ccd 5	ccd 6	ccd 7	ccd 8
level 1 events	107245	155787	109011	118441	136701
rejected events	97341	73757	97838	63738	106391
rejected %	90%	47%	89%	53%	77%

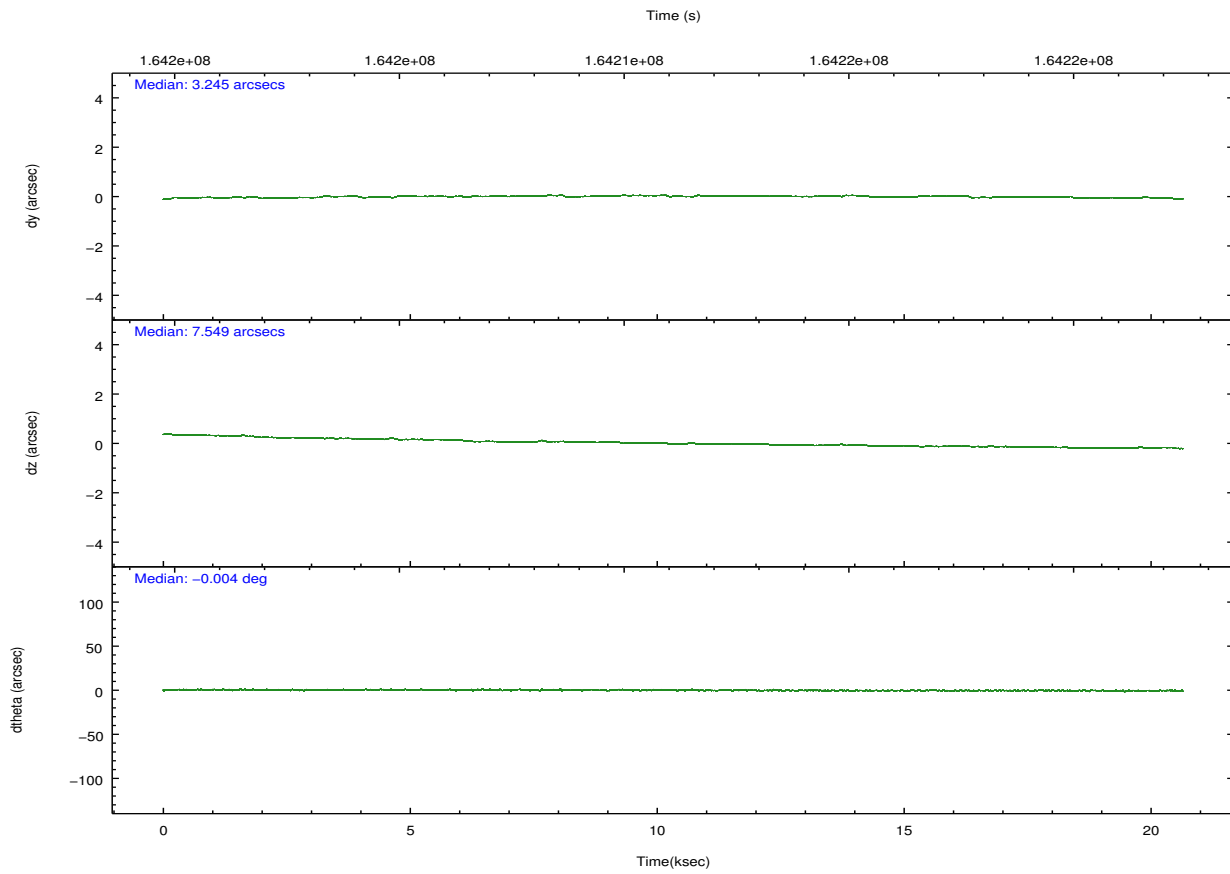
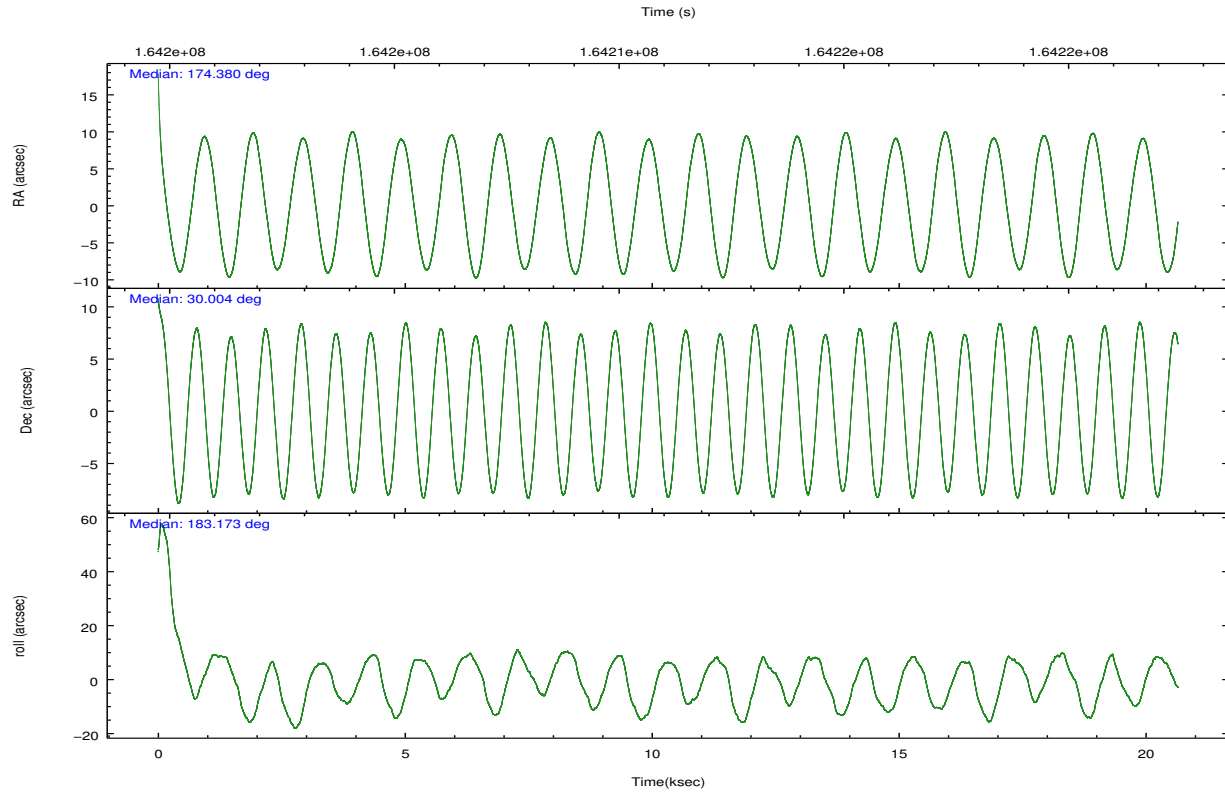
	ccd 3	ccd 5	ccd 6	ccd 7	ccd 8
grade 0 events	3535	14813	4005	5139	9170
	3%	9%	3%	4%	6%
grade 1 events	43	2866	59	102	108
	0%	1%	0%	0%	0%
grade 2 events	2114	23319	2401	10923	6616
	1%	14%	2%	9%	4%
grade 3 events	1168	3676	1285	5276	3309
	1%	2%	1%	4%	2%
grade 4 events	1161	3548	1255	5197	3169
	1%	2%	1%	4%	2%
grade 5 events	4020	11835	4118	12380	5842
	3%	7%	3%	10%	4%
grade 6 events	1929	36685	2228	28178	8049
	1%	23%	2%	23%	5%
grade 7 events	93275	59045	93660	51246	100438
	86%	37%	85%	43%	73%

2.2 Compared Parameters

Parameter	Planned	Actual	Parameter	Planned	Actual
Instrument	ACIS	ACIS	Obspar format version number	7	7
Detector	ACIS-35678	ACIS-35678	Obspar file type	PREDICTED	ACTUAL
Grating	NONE	NONE	Obspar update status	NONE	UPDATED
Data mode	VFAINT	VFAINT	Number of optional ACIS chips dropped	0	0
Observation mode	POINTING	POINTING	On-chip summing requested	N	N
[deg] Pointing RA	174.405827	174.3797442560548	Subarray requested	NONE	NONE
[deg] Pointing Dec	30.019145	30.00394792797319	Alternating exposures requested	N	N
[deg] Pointing Roll	183.011155	183.1808266438108	[s] Primary exposure time	0.000000	3.1
[mm] SIM focus pos	-0.684267	-0.6828225247311905			
[mm] SIM defocus	0	0.001444936568705701			
[mm] SIM translation stage pos	-190.132523	-190.1400660498719			
[mm] SIM translation stage offset	0	0.00754346686406393			
[s] Observation start time (MET)	164201413.184000	164200207.02478			
Observation start date	2003-03-16T11:29:09	2003-03-16T11:10:07			
[s] Observation end time (MET)	164221413.184000	164221809.41319			
Observation end date	2003-03-16T17:02:29	2003-03-16T17:10:09			
Read mode	TIMED	TIMED			

2.3 Aspect



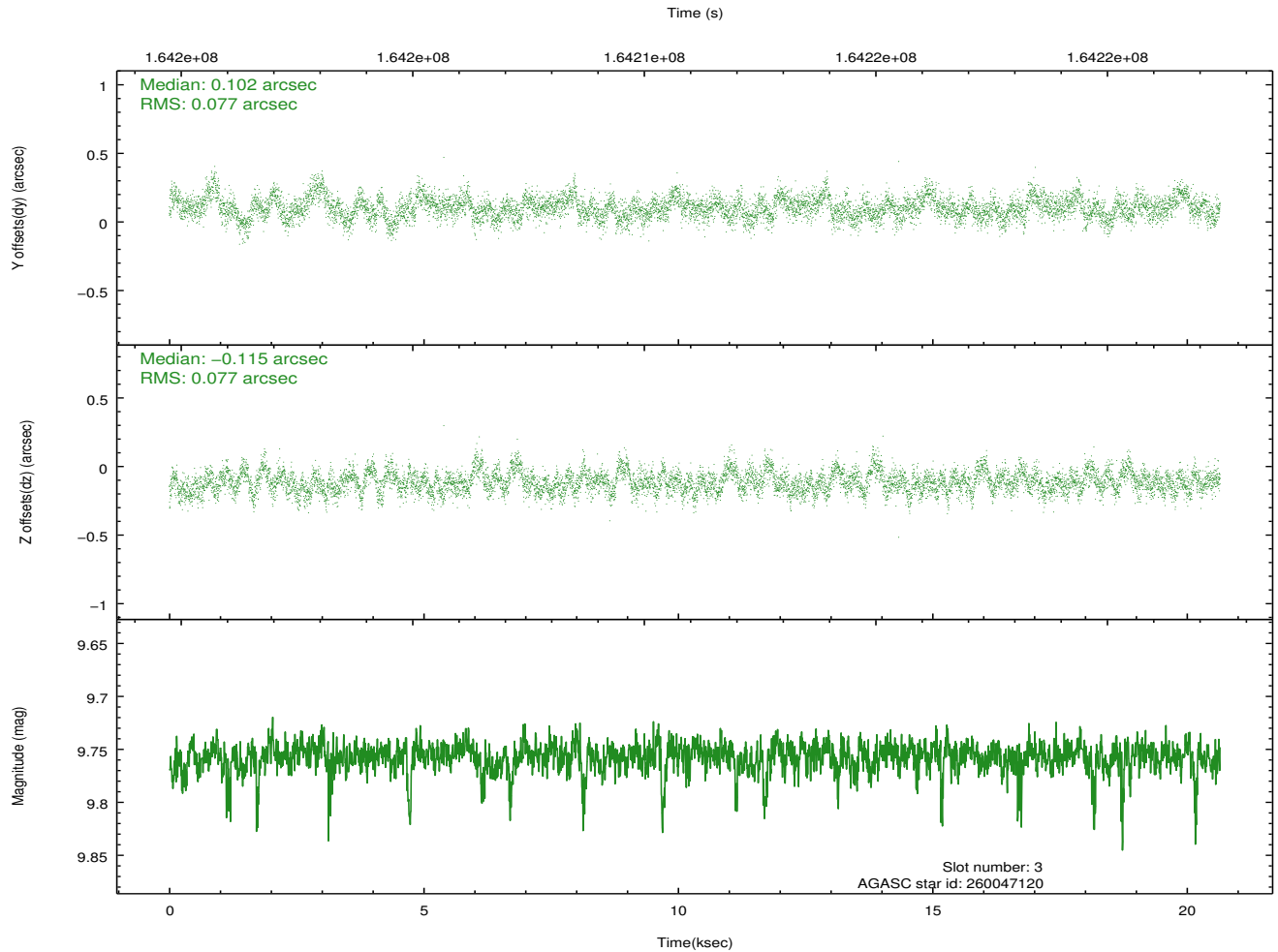
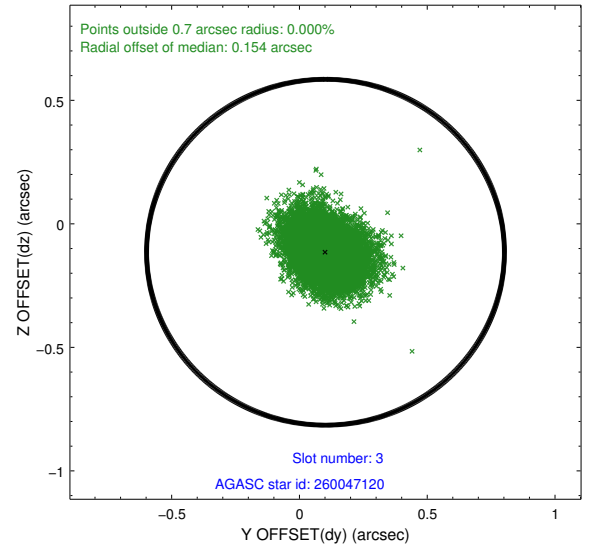
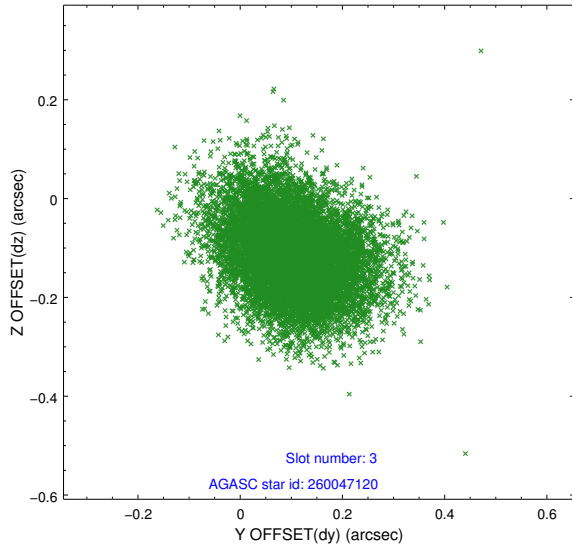


Slot Statistics

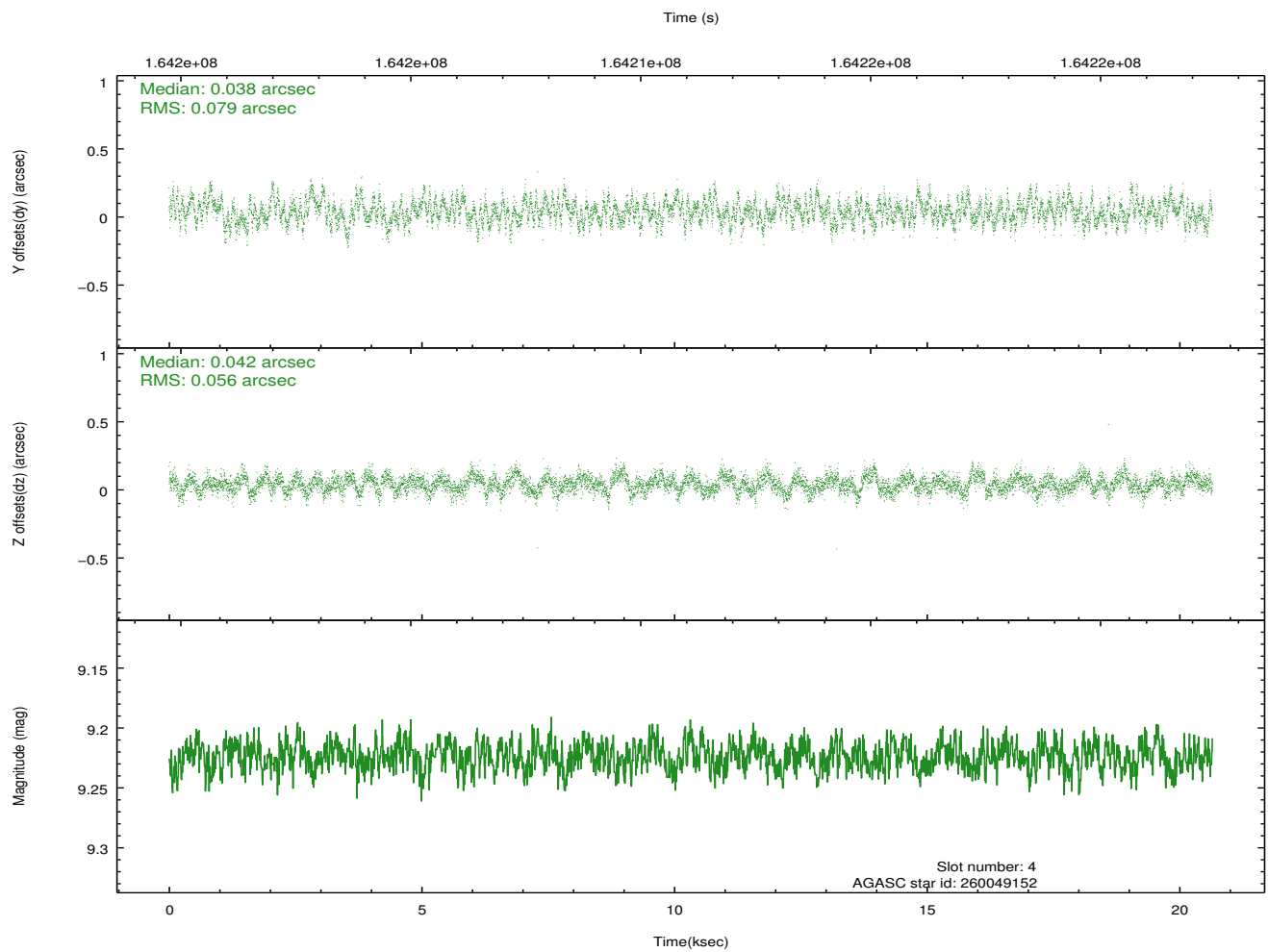
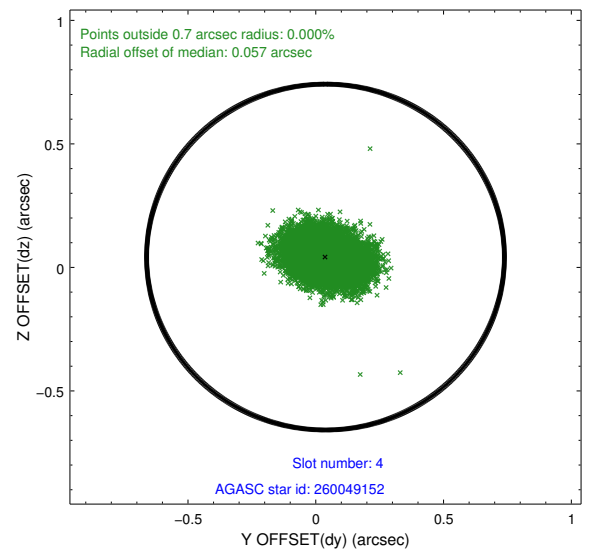
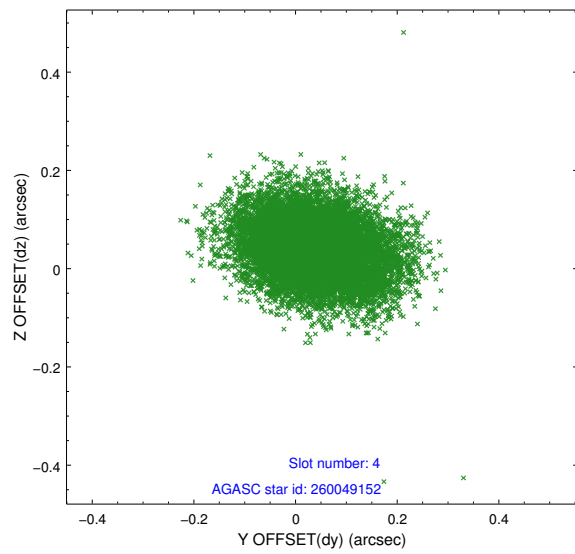
slot	status	id	mag	n_pts	med_dy	med_dz	dr1	dr2	ra	dec	mean_y	mean_z
0	FID	ACIS-S-2	7.12	5037	-0.020	-0.016	0.007	0.012	0.000000	0.000000	-755.90	-1728.77
1	FID	ACIS-S-4	7.21	5037	0.018	0.014	0.006	0.012	0.000000	0.000000	2157.33	179.56
2	FID	ACIS-S-5	7.24	5037	-0.030	0.011	0.007	0.012	0.000000	0.000000	-1808.53	173.43
3	GUIDE	260047120	9.76	10055	0.102	-0.115	0.115	0.189	173.912292	29.933667	1553.87	223.31
4	GUIDE	260049152	9.22	10064	0.038	0.042	0.103	0.170	173.769269	29.424657	2105.25	2027.55
5	GUIDE	260065288	10.44	10005	0.013	-0.031	0.289	0.462	175.033473	29.492318	-1864.65	1992.03
6	GUIDE	260066584	8.85	10068	-0.060	0.029	0.090	0.145	174.652464	29.756442	-720.22	984.33
7	GUIDE	330702192	8.96	10068	-0.071	0.083	0.090	0.142	173.840576	30.331544	1694.97	-1219.28

2.4 Star Slots

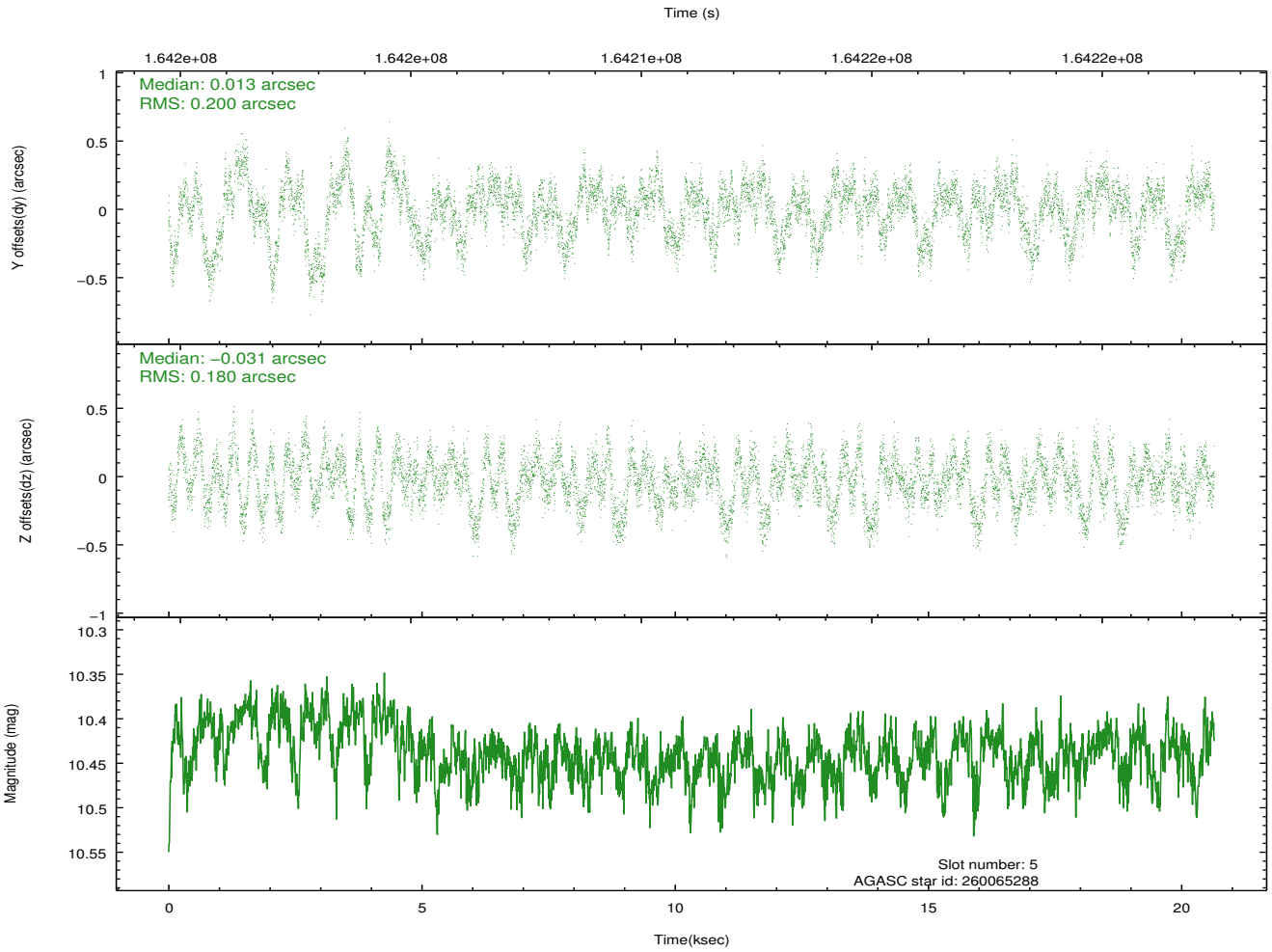
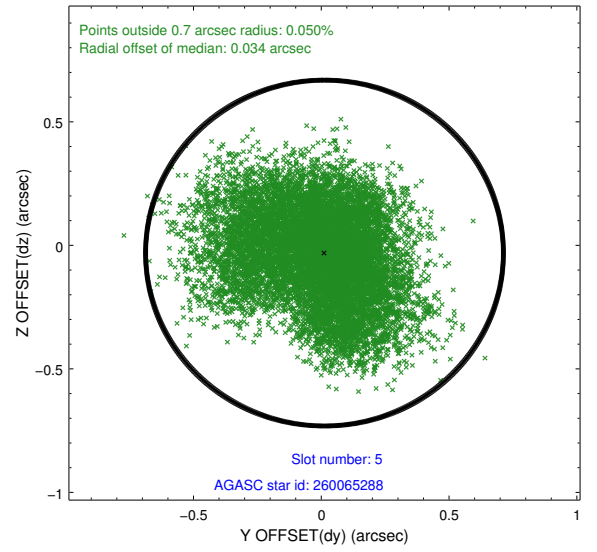
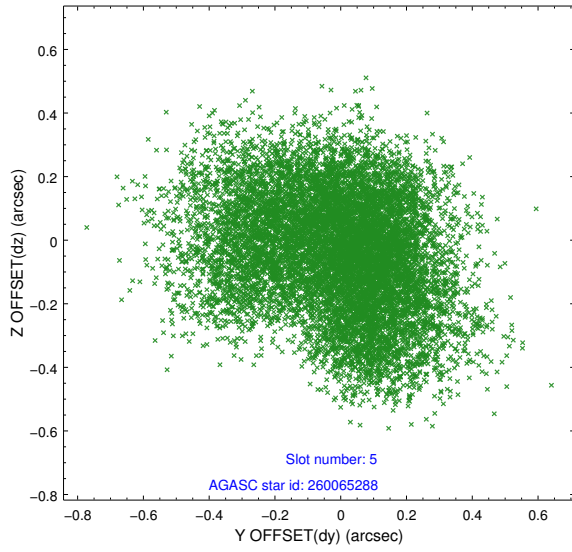
2.4.1 Slot 3



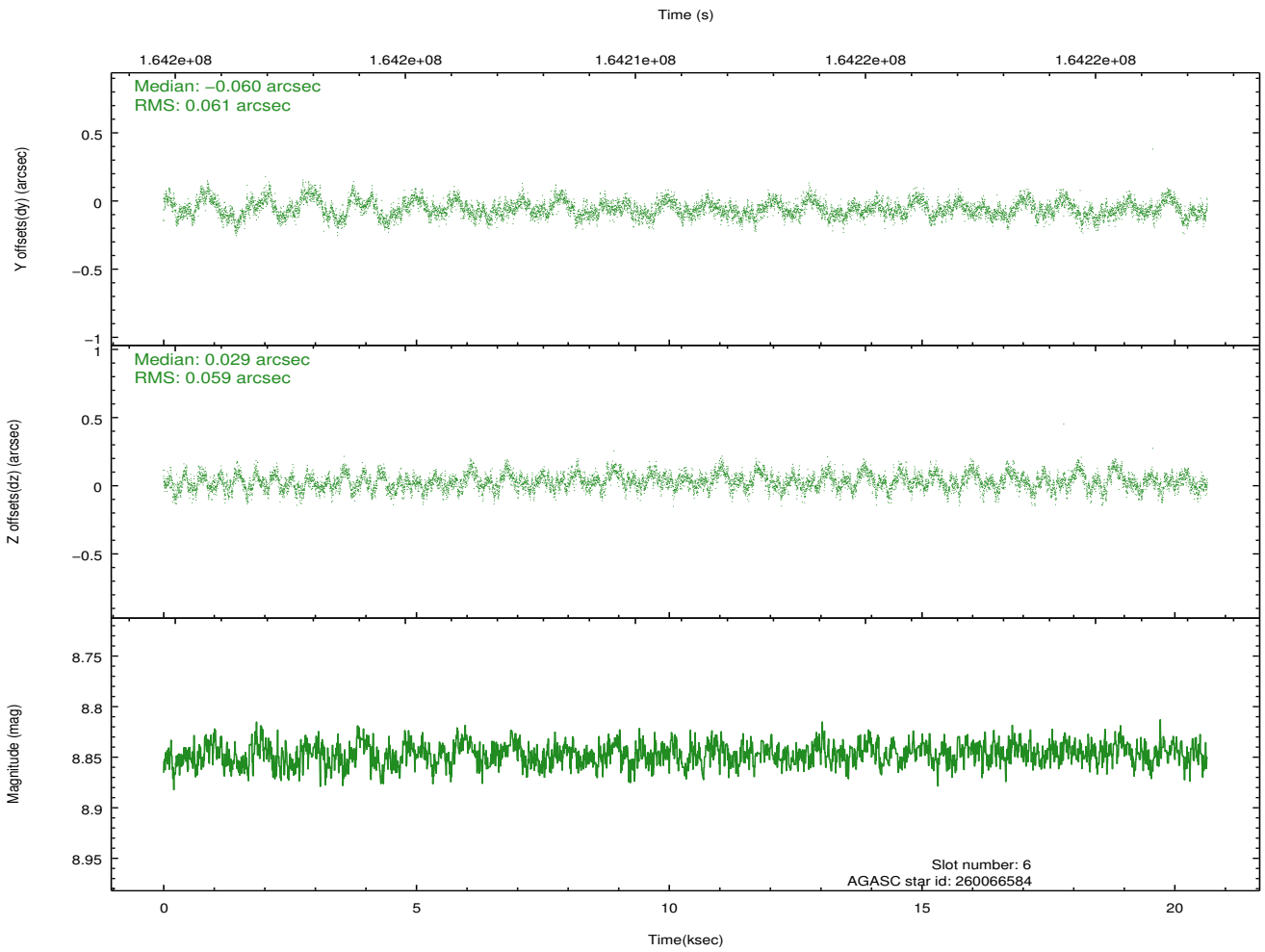
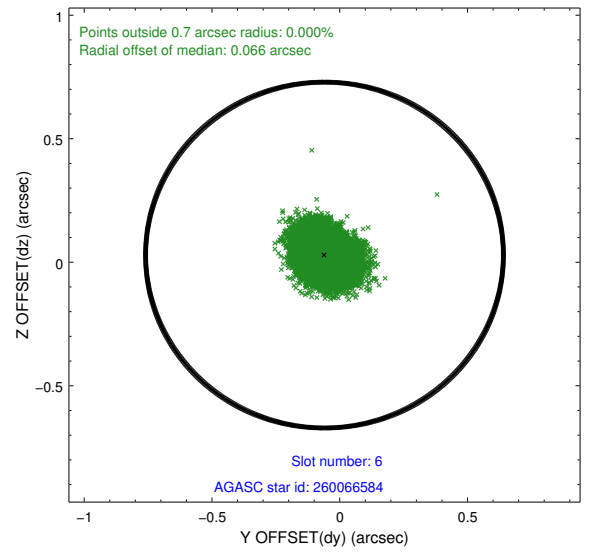
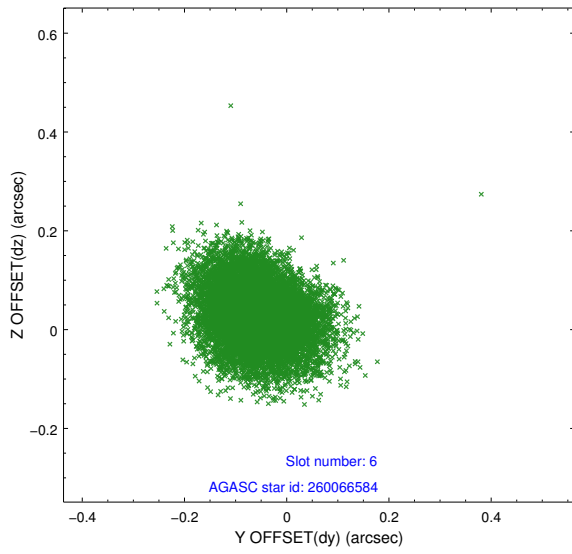
2.4.2 Slot 4



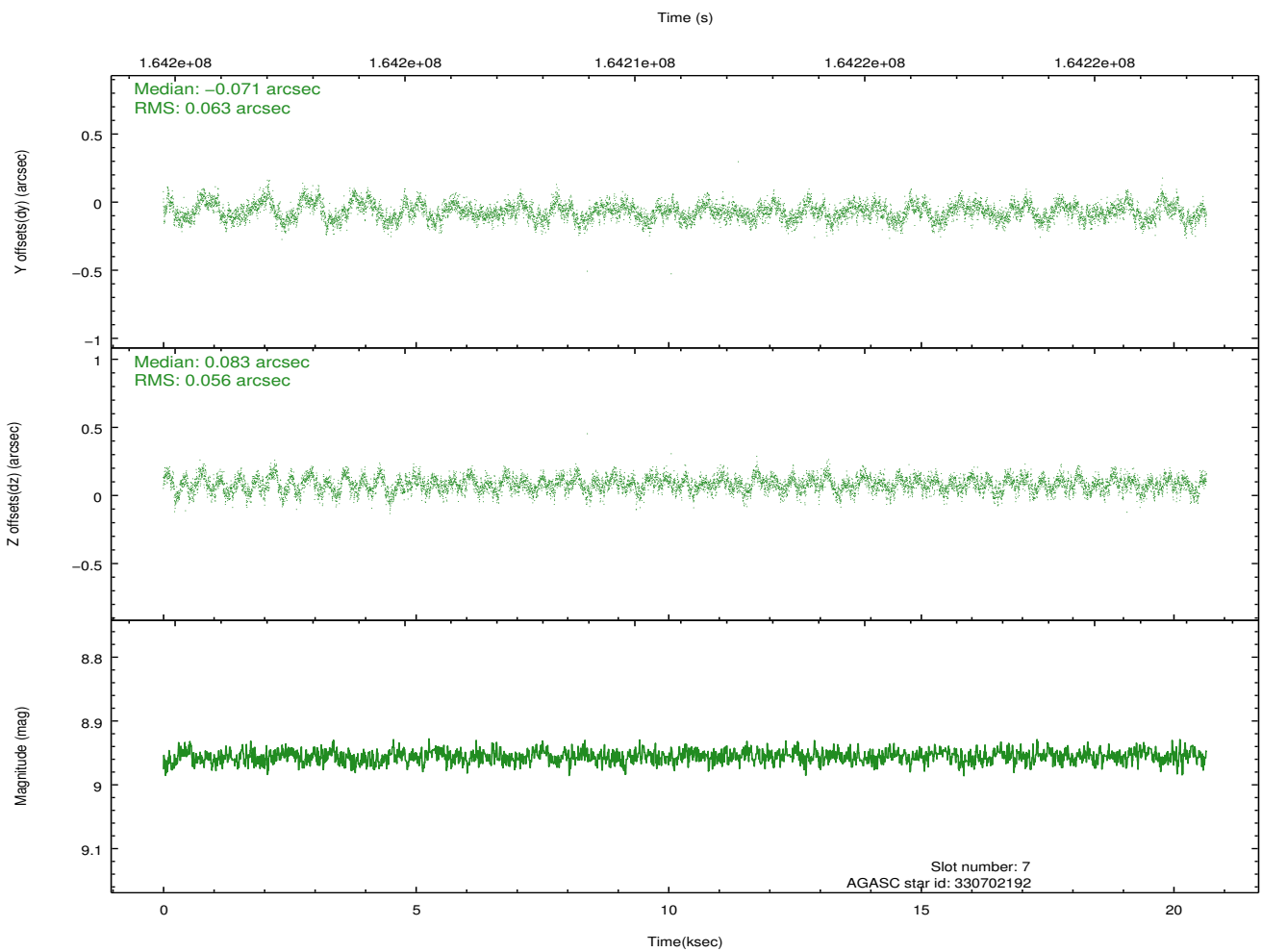
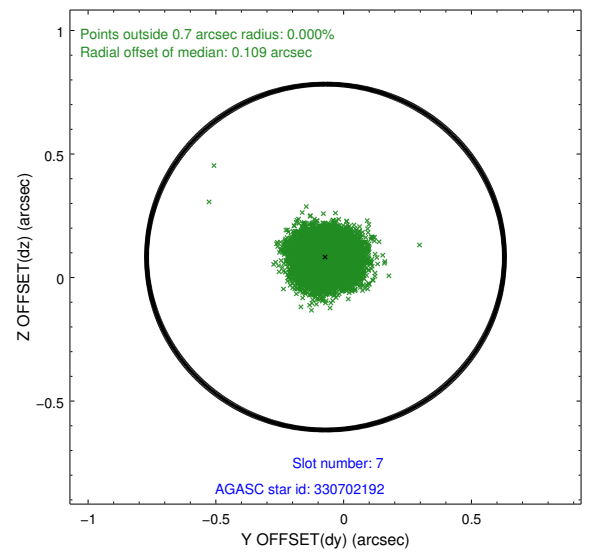
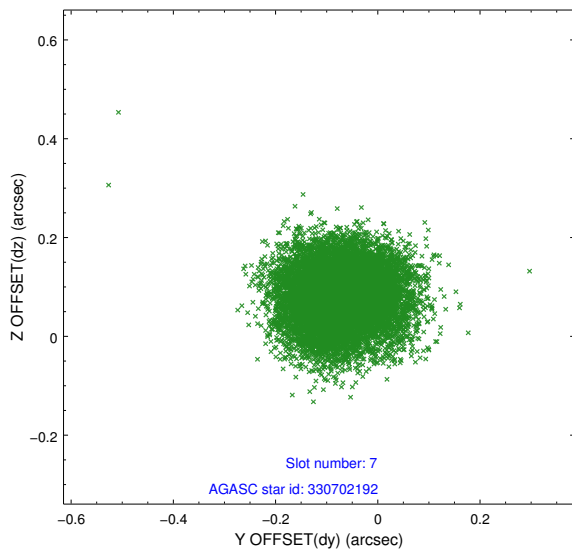
2.4.3 Slot 5



2.4.4 Slot 6

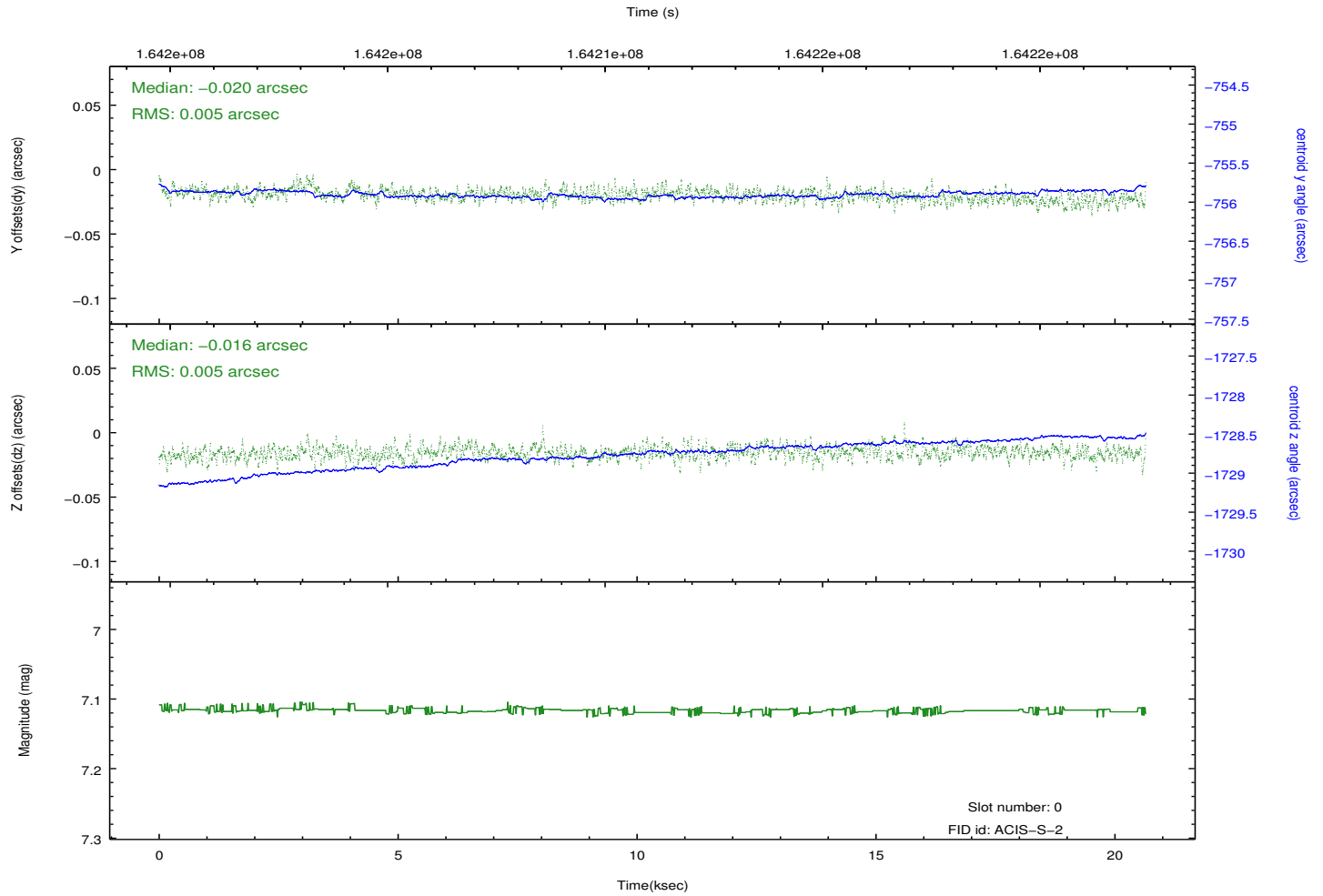
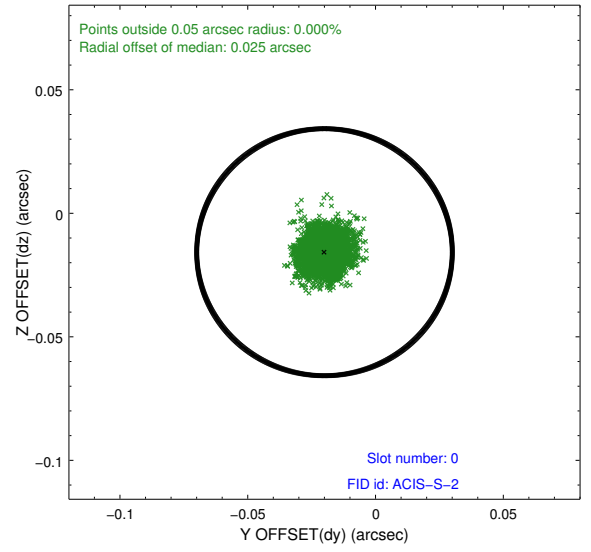
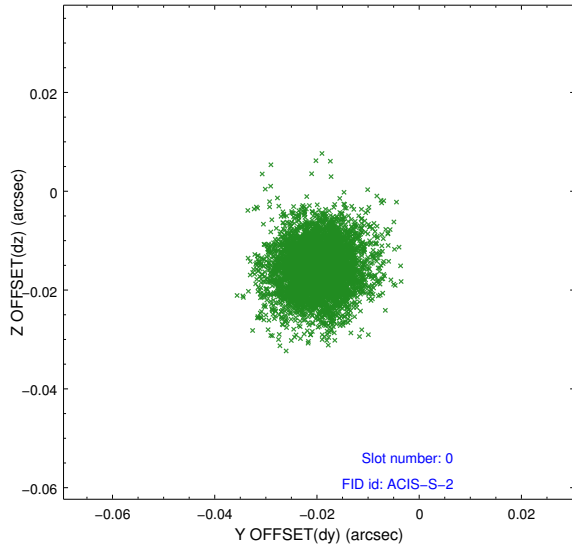


2.4.5 Slot 7

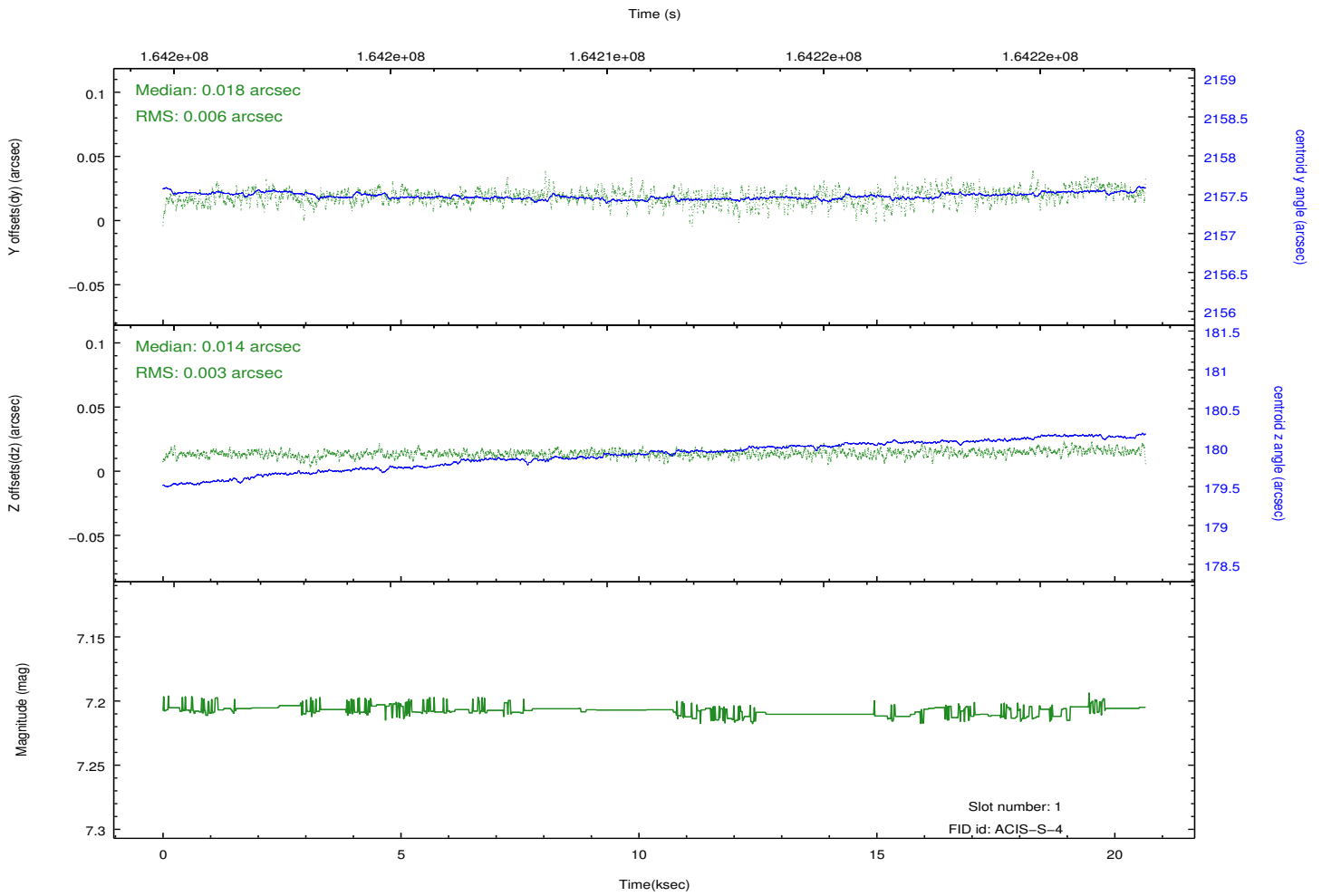
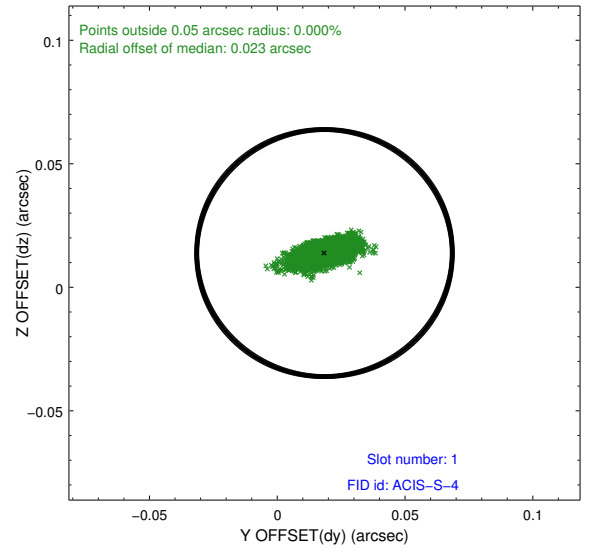
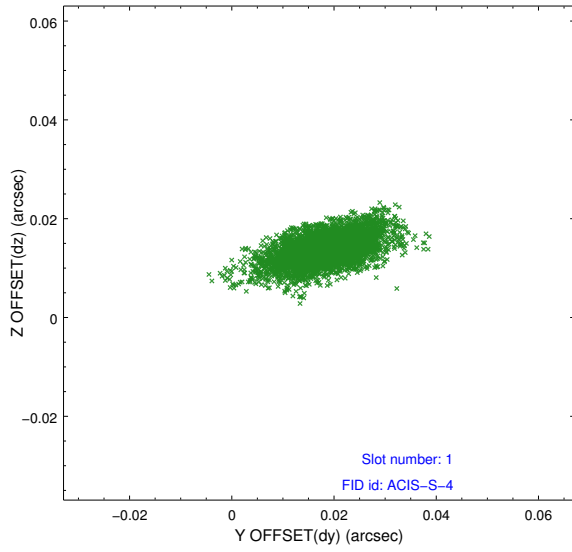


2.5 FID Slots

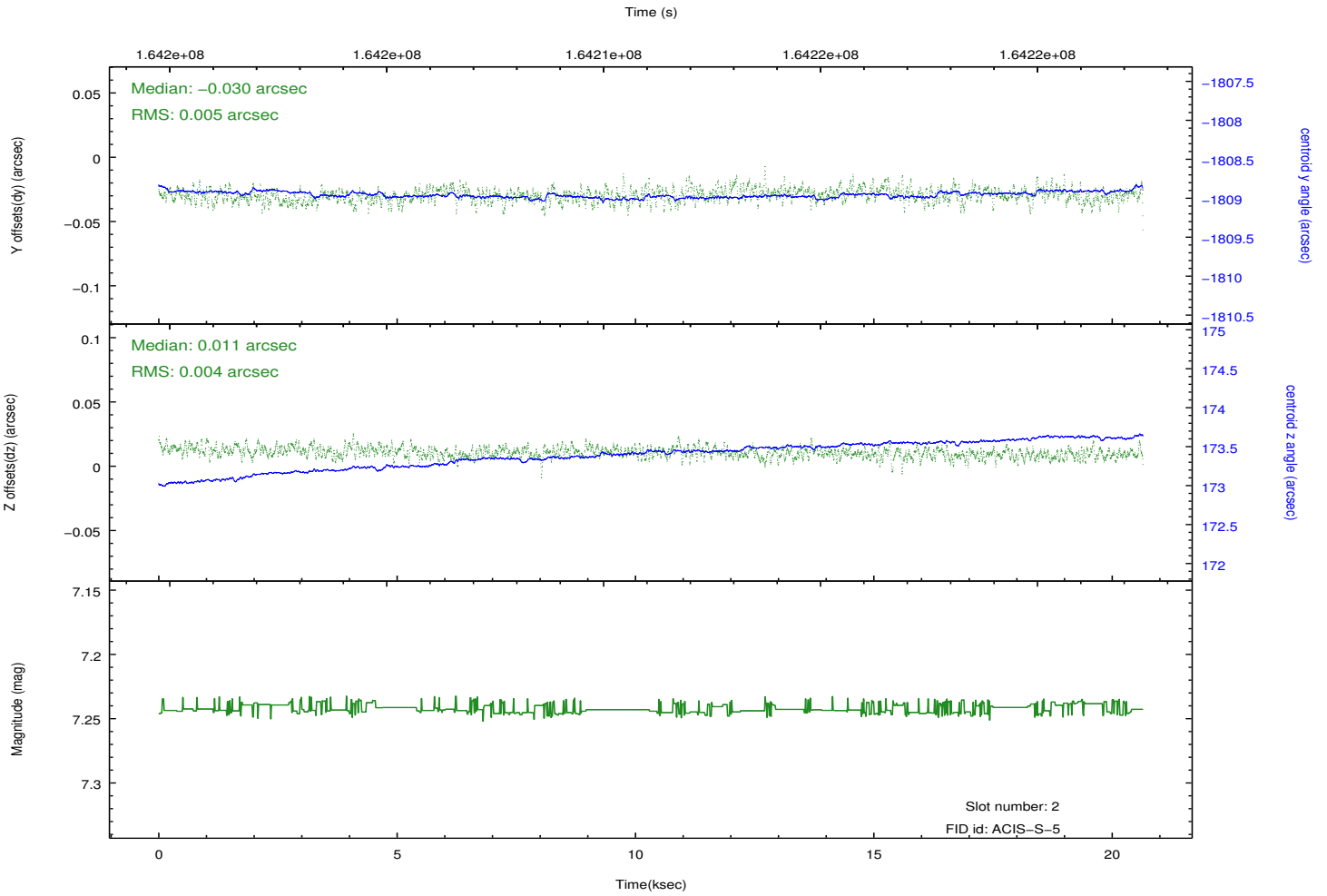
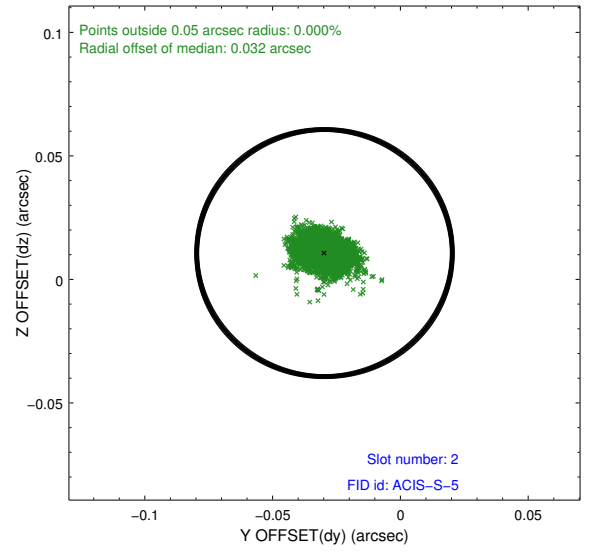
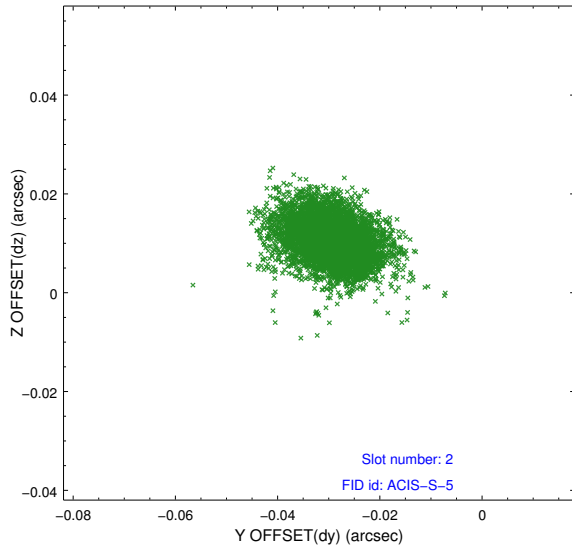
2.5.1 Slot 0



2.5.2 Slot 1



2.5.3 Slot 2



A Summary

A.1 Status

V&V Scientist	Jen Lauer
V&V Date (YYYY-MM-DD)	2012.11.08
V&V Edition	1
V&V Disposition and Status	OK
V&V Charge Time	20.106

A.2 Comments