

V&V Reference Report

L2 ASCDS Version : 8.4.5

Observation 4191 - L2 Version 3
Chandra X-Ray Center

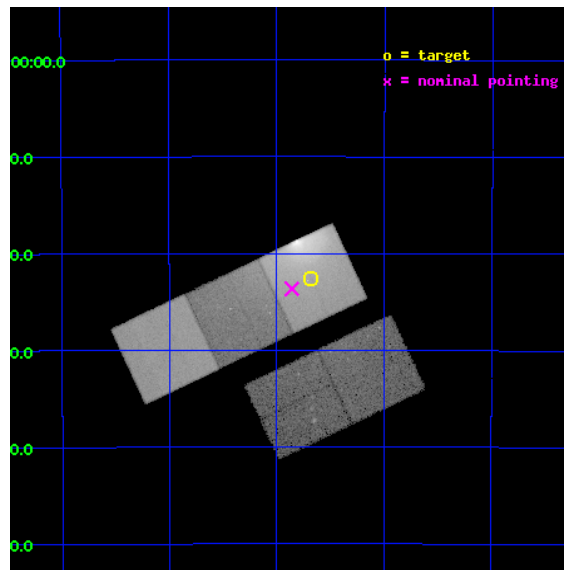
L2 Processing Date : Oct 26 2012

Contents

1	Front	2
2	OBI	3
2.1	OBI	3
2.1.1	Images	3
2.1.2	Bias	3
2.1.3	Parameters	4
2.1.4	Events	4
2.2	Compared Parameters	5
2.3	Aspect	6
2.4	Star Slots	9
2.4.1	Slot 3	9
2.4.2	Slot 4	10
2.4.3	Slot 5	11
2.4.4	Slot 6	12
2.4.5	Slot 7	13
2.5	FID Slots	14
2.5.1	Slot 0	14
2.5.2	Slot 1	15
2.5.3	Slot 2	16
A	Summary	17
A.1	Status	17
A.2	Comments	17

1 Front

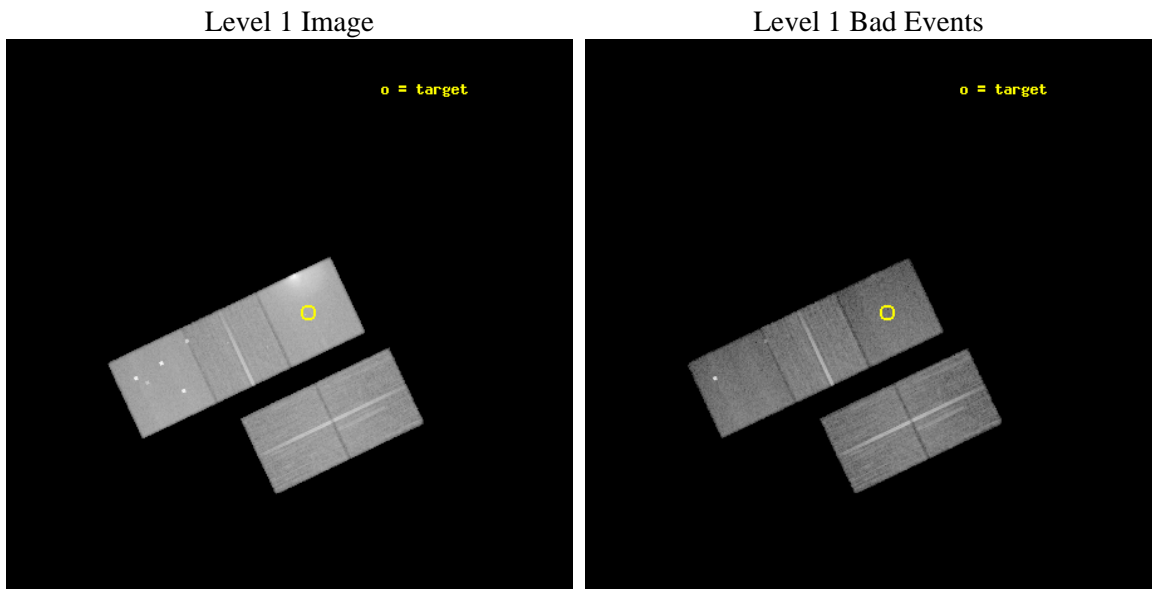
seq_num	800347	Sequence number
obs_id	4191	Observation id
title	INTRACLUSTER GAS BULK VELOCITIES IN THE CENTAURUS CLUSTER	Proposal
observer	Dr renato dupke	Principal investigator
object	ABELL 3526	Source name
dtcycle	0	
cycle	P	events from which exps? Prim/Second/Both
ra_targ	192.170833	Observer's specified target RA [deg]
dec_targ	-41.376667	Observer's specified target Dec [deg]
ra_nom	192.21479411044	Nominal RA [deg]
dec_nom	-41.394260634022	Nominal Dec [deg]
roll_nom	334.66369208759	Nominal Roll [deg]
revision	3	Processing version of data
ontime	34471.076031029	Sum of GTIs [s]
livetime	34020.686045447	Livetime [s]
ontime2	34464.629890591	Sum of GTIs [s]
ontime3	34467.812020361	Sum of GTIs [s]
ontime5	34471.034991026	Sum of GTIs [s]
ontime6	34470.993951023	Sum of GTIs [s]
ontime7	34471.076031029	Sum of GTIs [s]
l2events	555001	Number of level 2 events



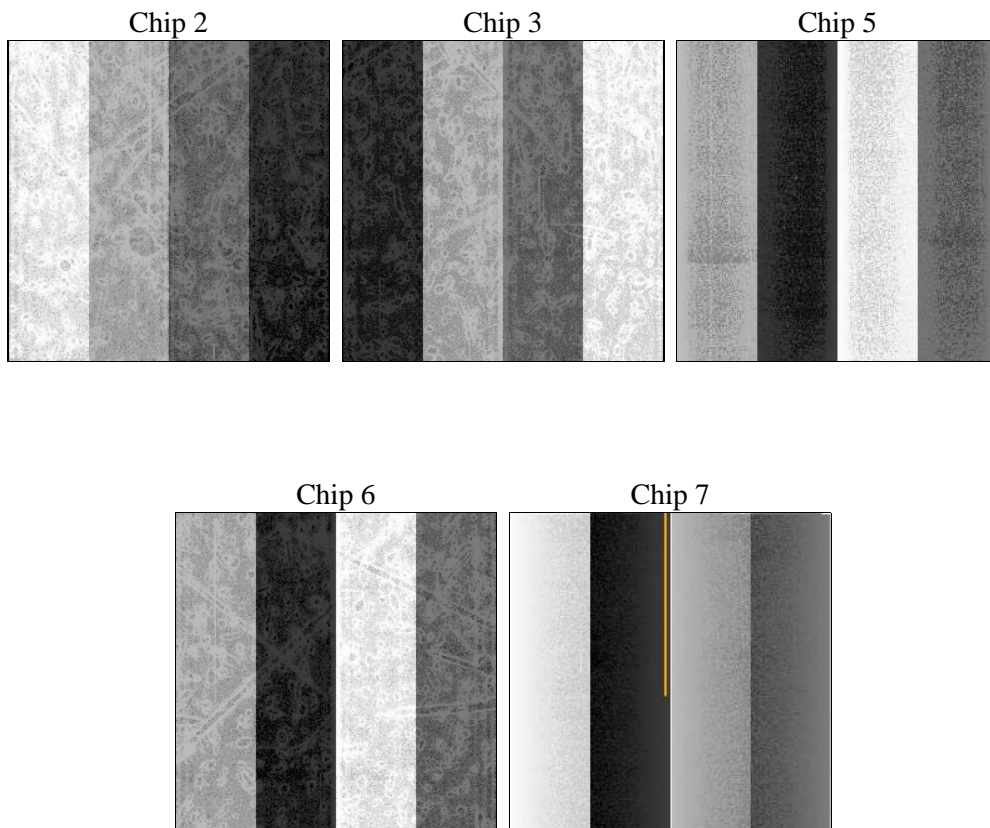
2 OBI

2.1 OBI

2.1.1 Images



2.1.2 Bias



2.1.3 Parameters

obi_num	1	Obi number	sched_exp_time	34700.000000	[s] Scheduled observation exposure time
ascdsver	8.4.5	Processing system revision	ontime	34471.076031029	Sum of GTIs [s]
caldsver	4.5.2	 	ontime2	34464.629890591	Sum of GTIs [s]
date	2012-10-26T17:45:24	Date and time of file creation	ontime3	34467.812020361	Sum of GTIs [s]
revision	3	Processing version of data	ontime5	34471.034991026	Sum of GTIs [s]
			ontime6	34470.993951023	Sum of GTIs [s]
			ontime7	34471.076031029	Sum of GTIs [s]
			l1events	1323302	Number of level 1 events

2.1.4 Events

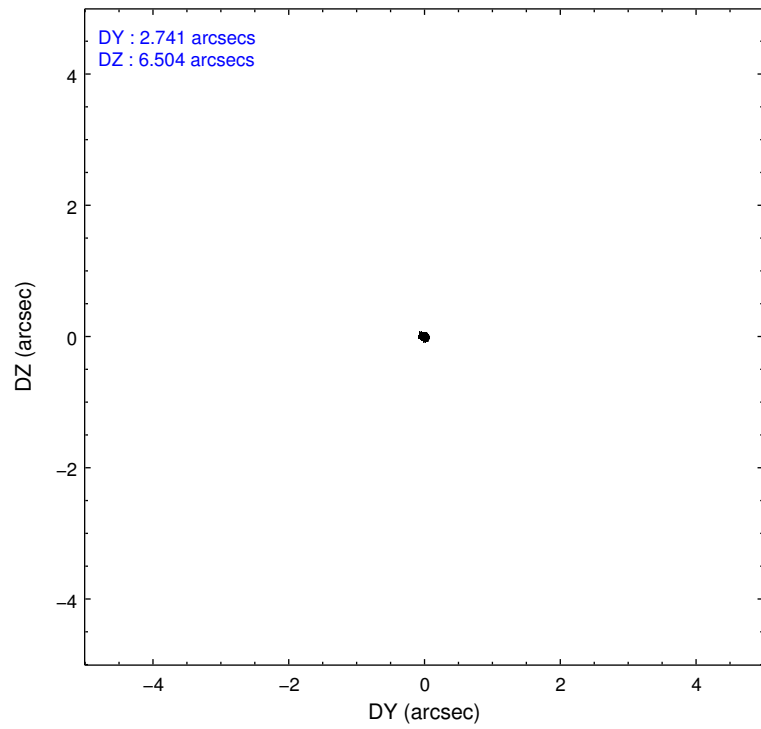
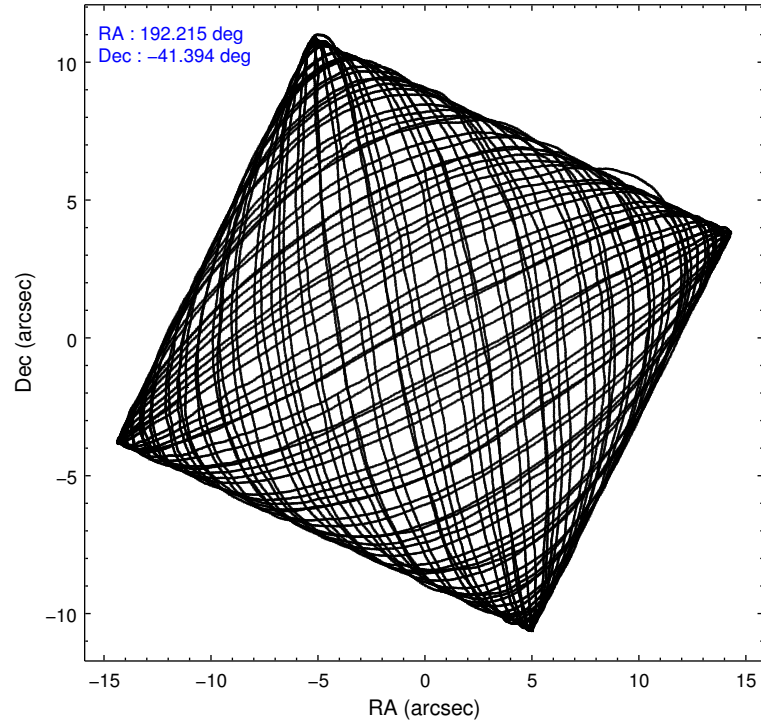
	ccd 2	ccd 3	ccd 5	ccd 6	ccd 7
level 1 events	194577	185364	282406	232363	428592
rejected events	167850	157658	126543	165842	110270
rejected %	86%	85%	44%	71%	25%

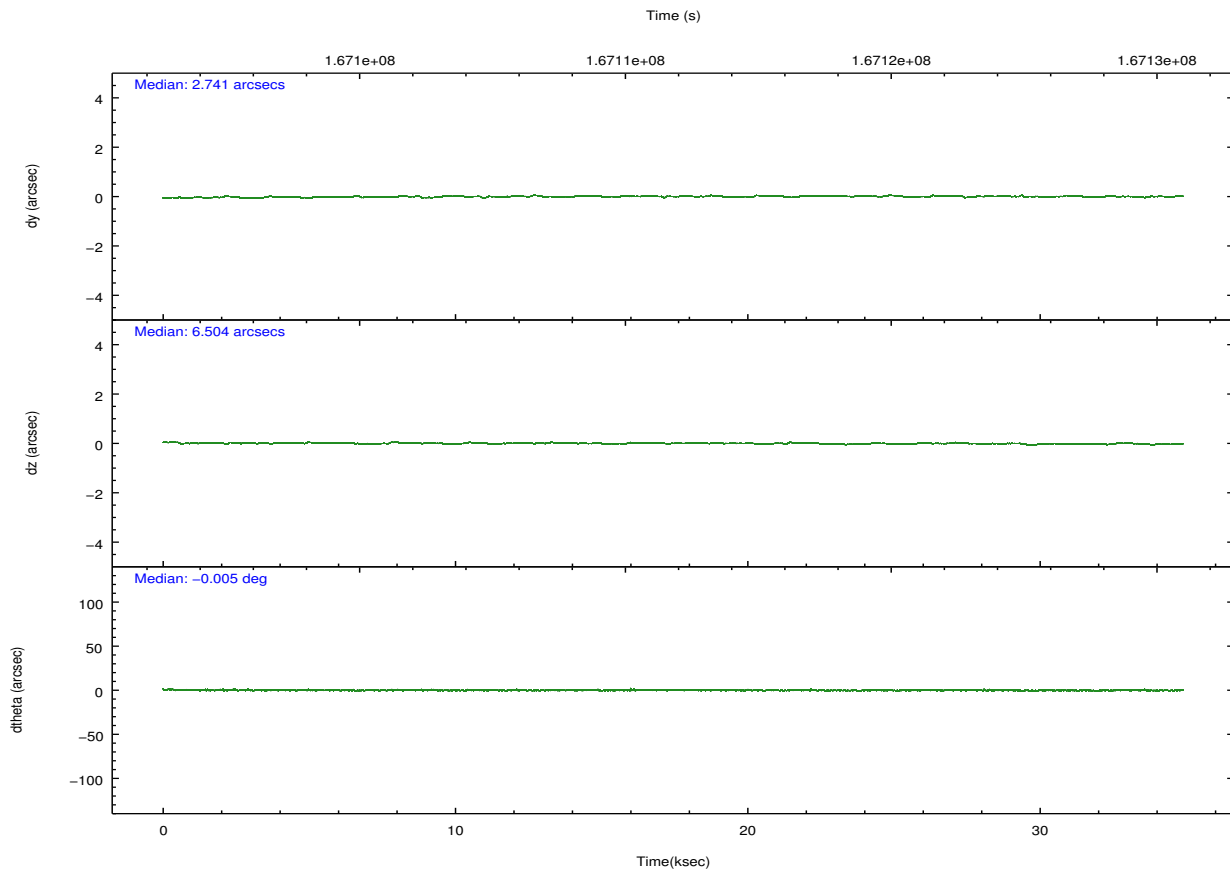
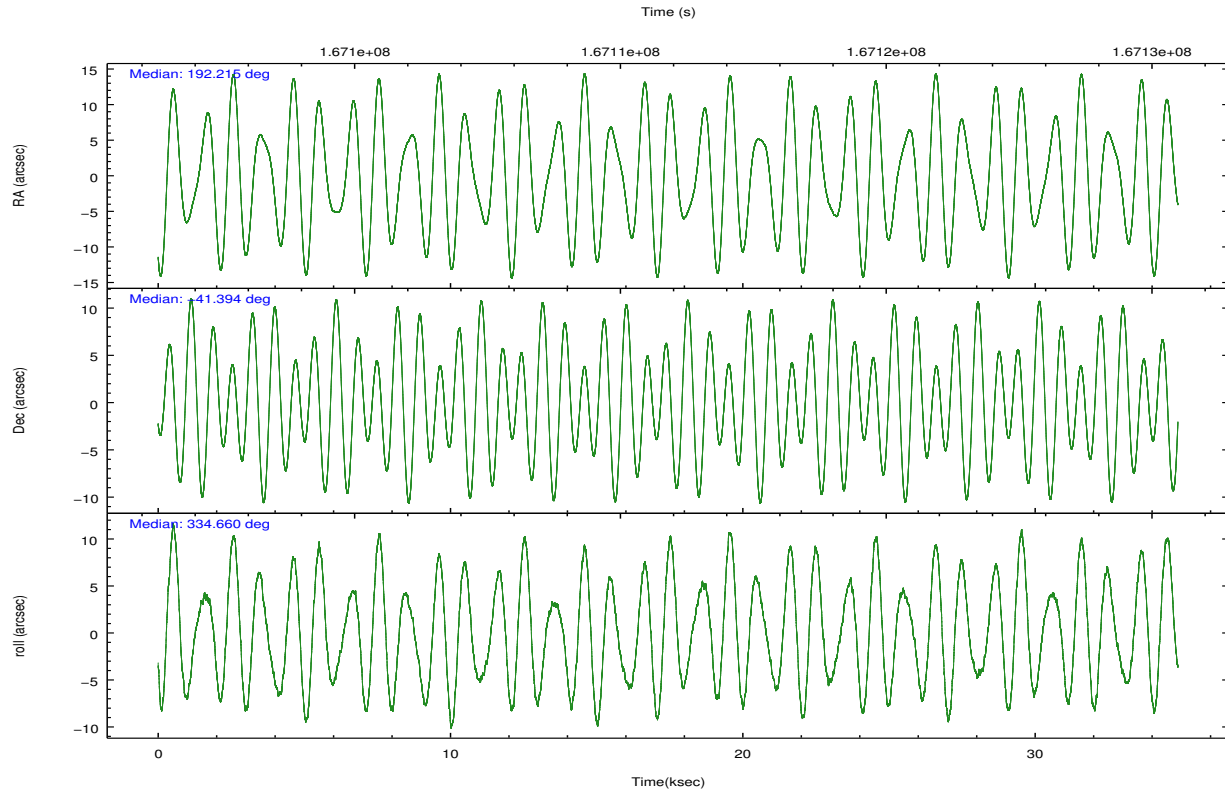
	ccd 2	ccd 3	ccd 5	ccd 6	ccd 7
grade 0 events	14172	15166	33401	45685	70759
	7%	8%	11%	19%	16%
grade 1 events	118	143	286	205	198
	0%	0%	0%	0%	0%
grade 2 events	4873	4450	42778	8688	79215
	2%	2%	15%	3%	18%
grade 3 events	2217	2298	7658	3535	36229
	1%	1%	2%	1%	8%
grade 4 events	2213	2287	7211	3517	35914
	1%	1%	2%	1%	8%
grade 5 events	5832	6781	22500	7143	22377
	2%	3%	7%	3%	5%
grade 6 events	3260	3512	64828	5113	96229
	1%	1%	22%	2%	22%
grade 7 events	161892	150727	103744	158477	87671
	83%	81%	36%	68%	20%

2.2 Compared Parameters

Parameter	Planned	Actual	Parameter	Planned	Actual
Instrument	ACIS	ACIS	Obspar format version number	7	7
Detector	ACIS-23567	ACIS-23567	Obspar file type	PREDICTED	ACTUAL
Grating	NONE	NONE	Obspar update status	NONE	UPDATED
Data mode	VFAINT	VFAINT	Number of optional ACIS chips dropped	0	0
Observation mode	POINTING	POINTING	On-chip summing requested	N	N
[deg] Pointing RA	192.178680	192.2147941104373	Subarray requested	NONE	NONE
[deg] Pointing Dec	-41.396834	-41.39426063402224	Alternating exposures requested	N	N
[deg] Pointing Roll	334.483177	334.6636920875941	[s] Primary exposure time	0.000000	3.1
[mm] SIM focus pos	-0.684267	-0.6828225247311905			
[mm] SIM defocus	0	0.001444936568705701			
[mm] SIM translation stage pos	-190.132523	-190.1400660498719			
[mm] SIM translation stage offset	0	0.00754346686406393			
[s] Observation start time (MET)	167094536.184000	167094160.37187			
Observation start date	2003-04-18T23:07:52	2003-04-18T23:02:40			
[s] Observation end time (MET)	167129236.184000	167129643.31087			
Observation end date	2003-04-19T08:46:12	2003-04-19T08:54:03			
Read mode	TIMED	TIMED			

2.3 Aspect





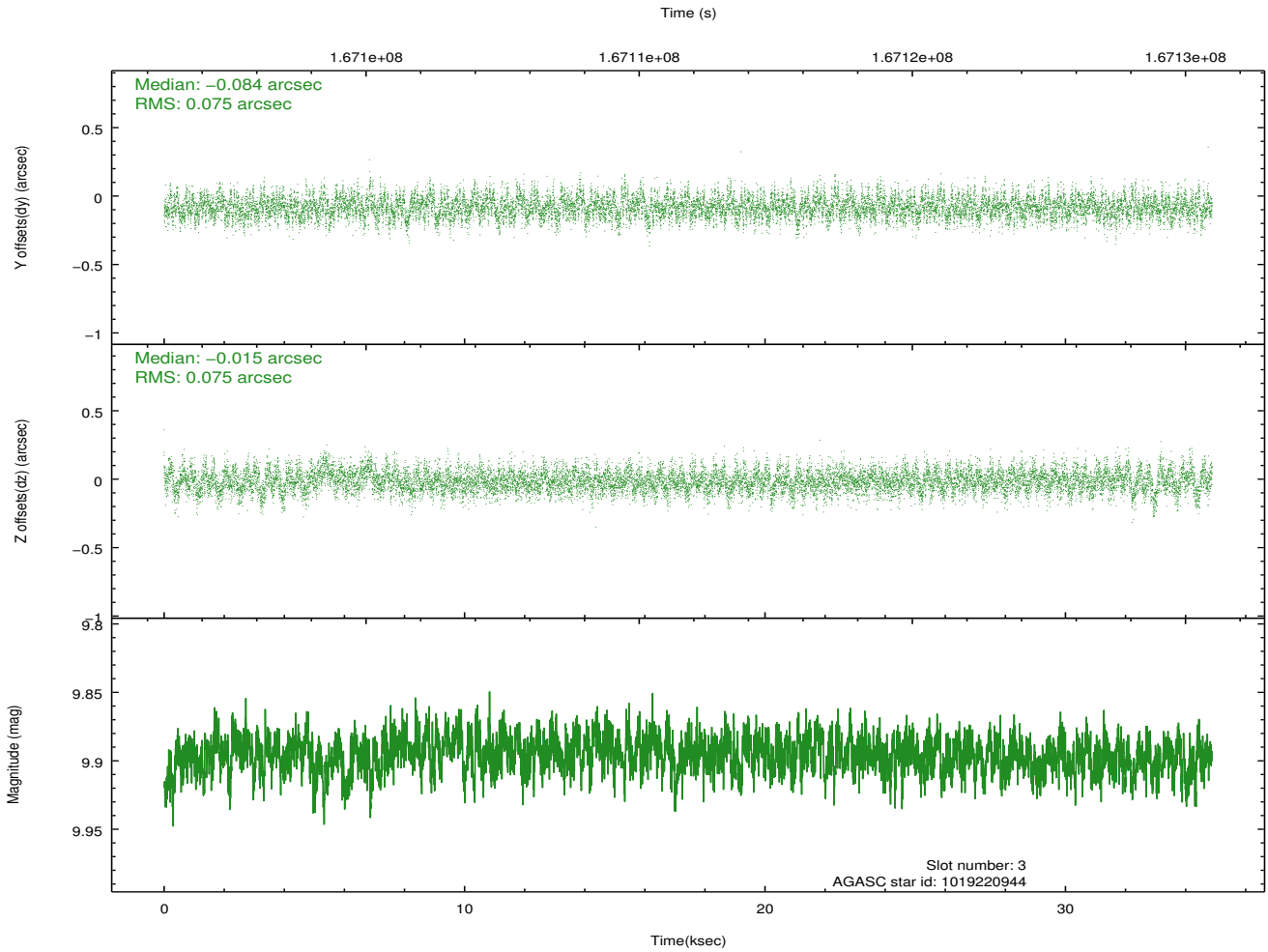
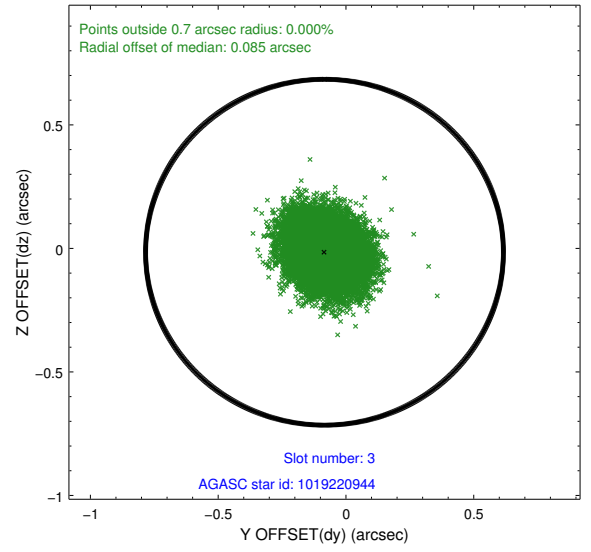
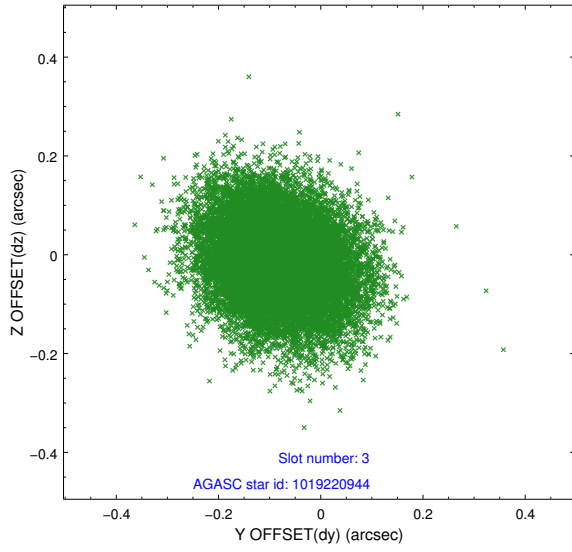
Slot Statistics

slot	status	id	mag	n_pts	med_dy	med_dz	dr1	dr2	ra	dec	mean_y	mean_z
0	FID	ACIS-S-2	7.12	8509	-0.042	-0.004	0.006	0.011	0.000000	0.000000	-755.38	-1727.67
1	FID	ACIS-S-4	7.21	8509	0.011	0.022	0.006	0.010	0.000000	0.000000	2157.89	180.85
2	FID	ACIS-S-5	7.24	8509	0.000	-0.008	0.007	0.011	0.000000	0.000000	-1808.16	174.46
3	GUIDE	1019220944	9.90	17000	-0.084	-0.015	0.114	0.184	192.806424	-41.071482	1035.66	1785.45
4	GUIDE	1019221952	9.59	17003	0.010	-0.056	0.121	0.192	192.906873	-41.032646	1223.58	2027.80
5	GUIDE	1019615024	8.47	17016	-0.014	0.018	0.068	0.109	191.349086	-41.365736	-2066.02	-874.13
6	GUIDE	1019740808	8.79	17012	0.074	-0.026	0.072	0.115	192.766173	-41.251253	1211.59	1153.14
7	GUIDE	1019743536	8.64	17012	0.012	0.083	0.075	0.123	192.632057	-41.696442	1566.21	-451.00

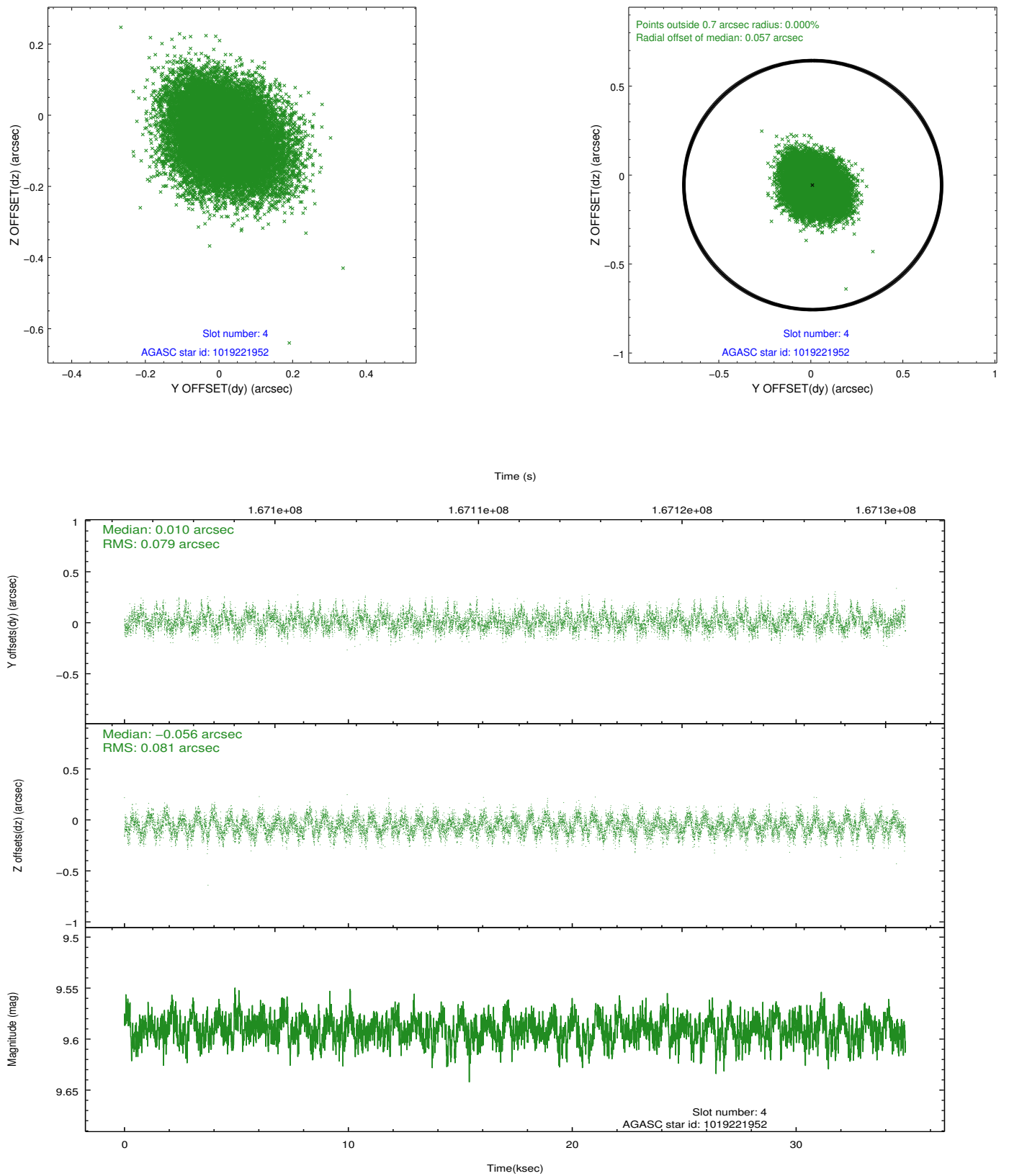
∞

2.4 Star Slots

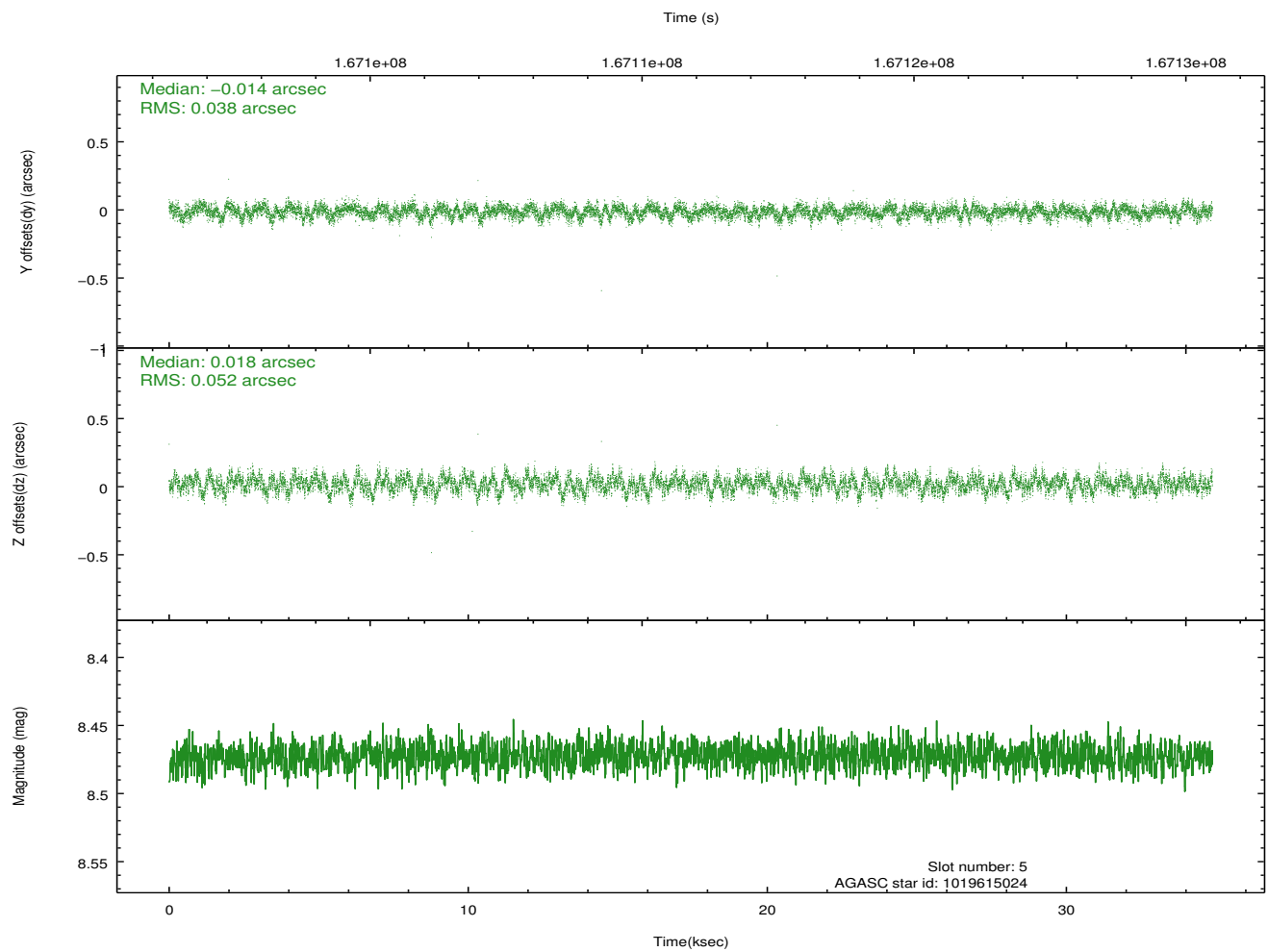
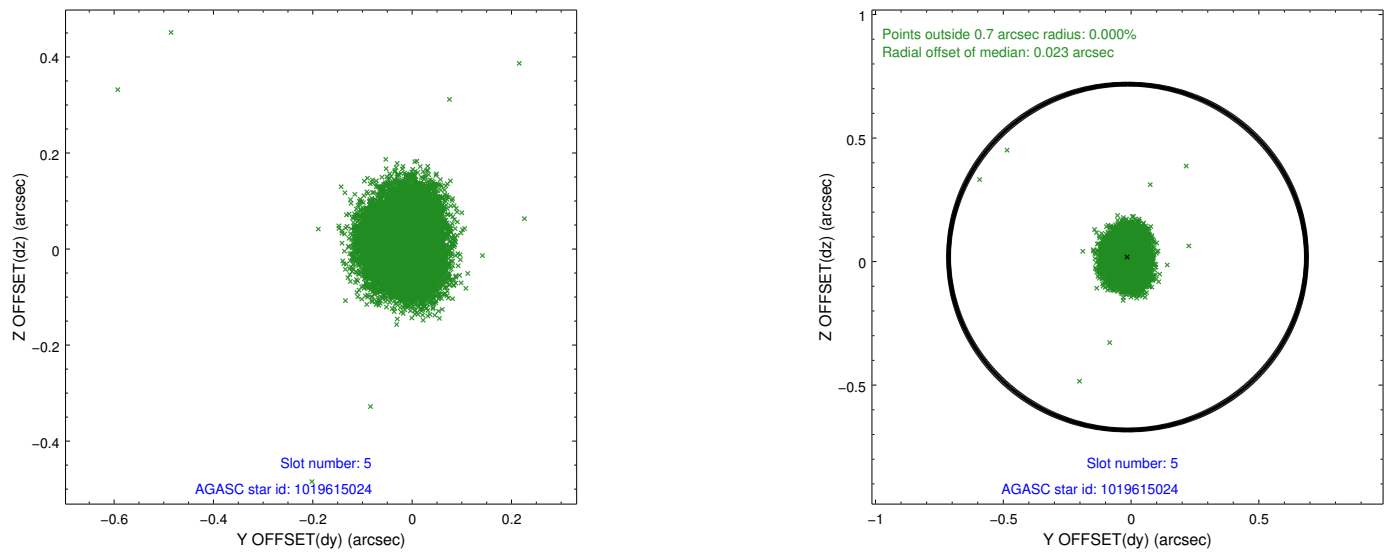
2.4.1 Slot 3



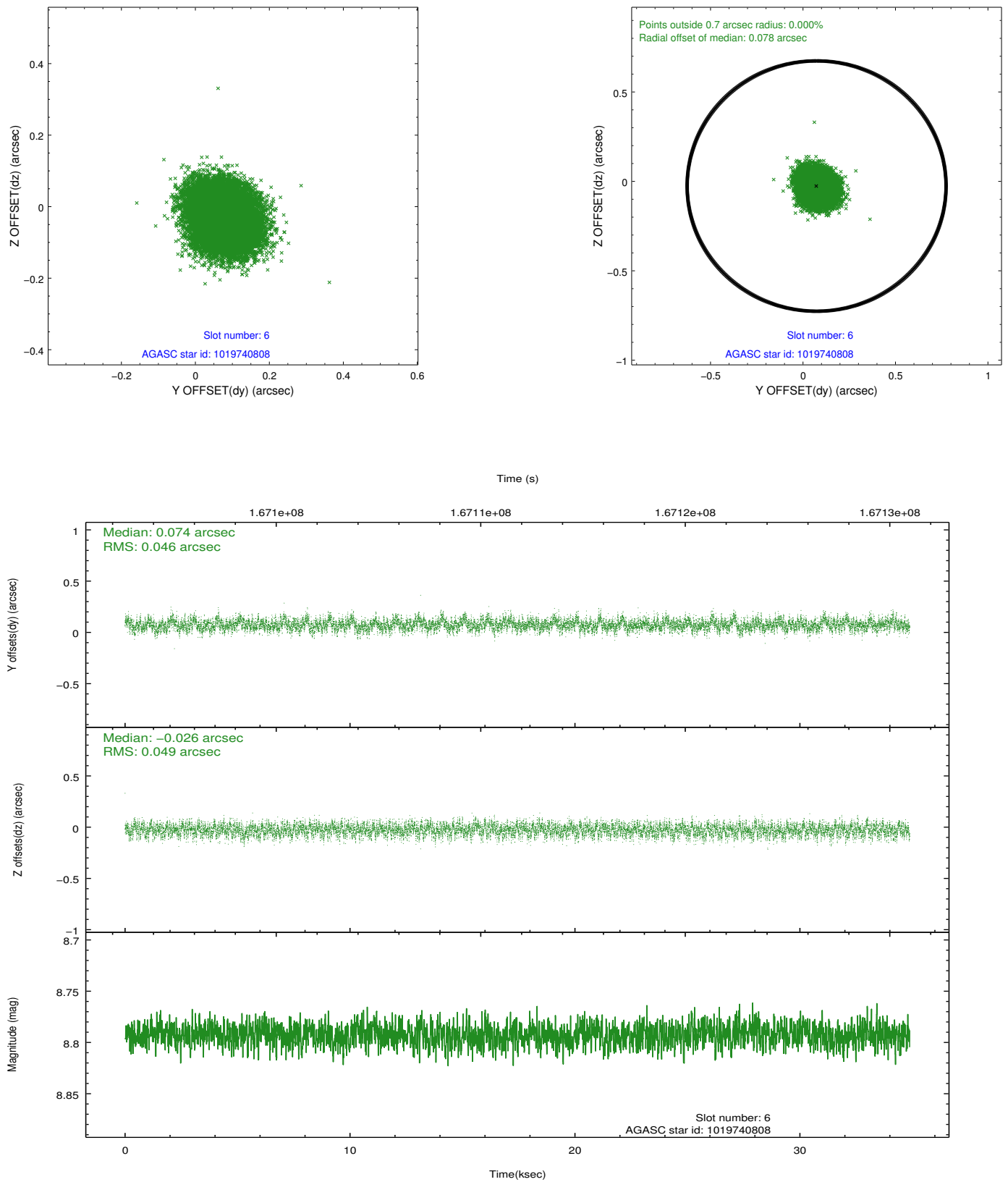
2.4.2 Slot 4



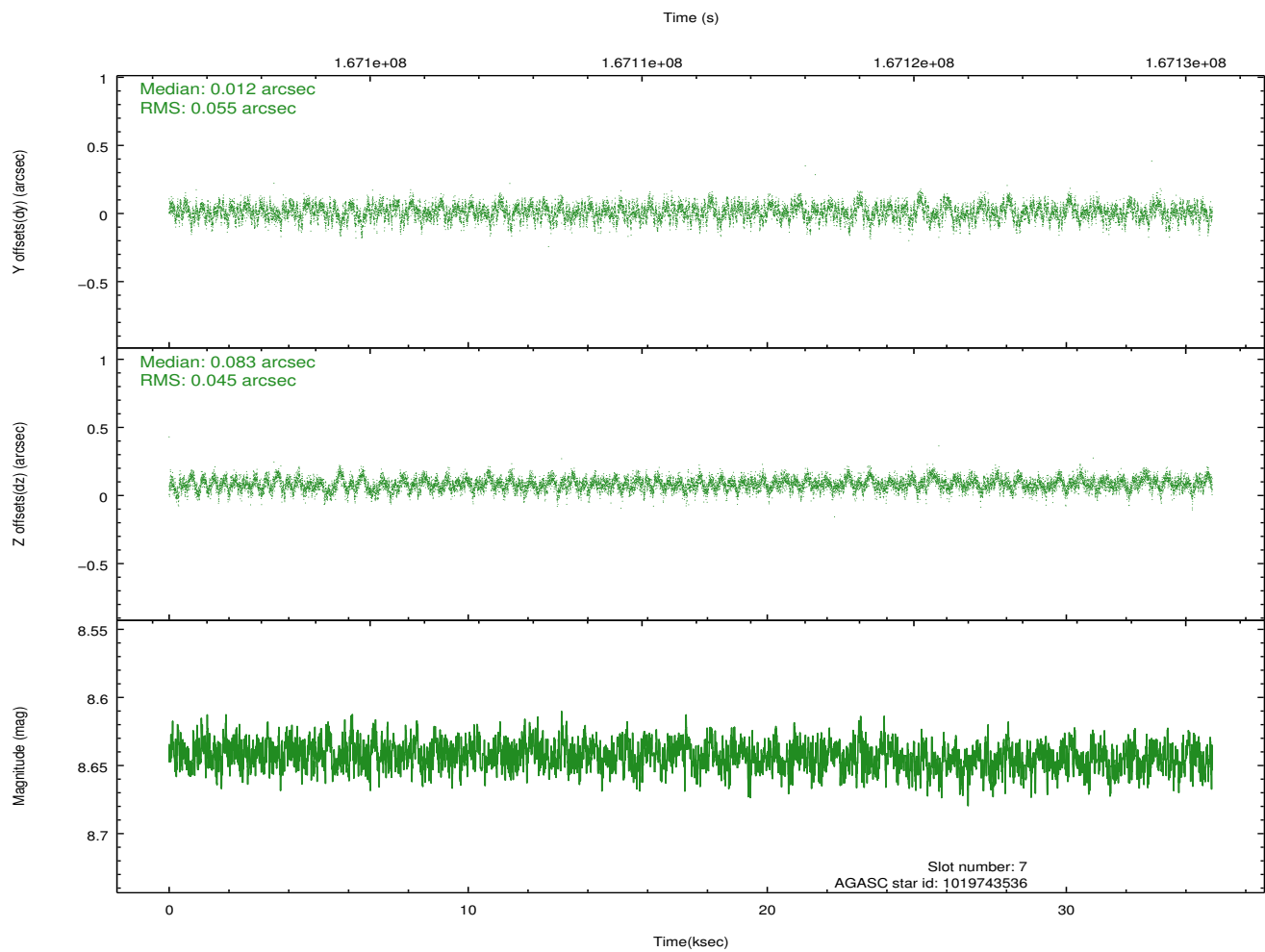
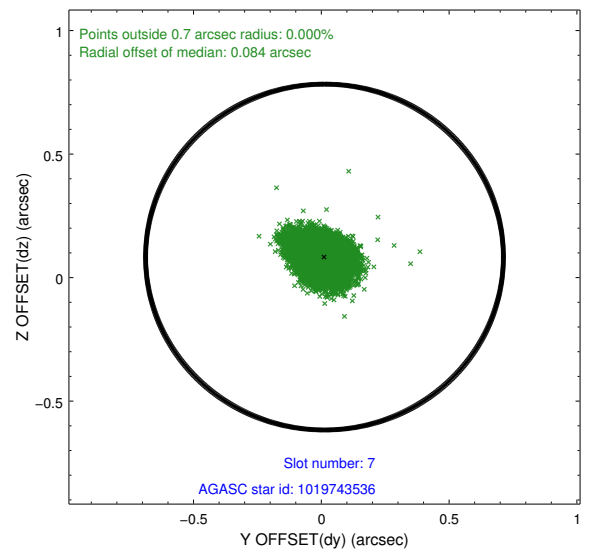
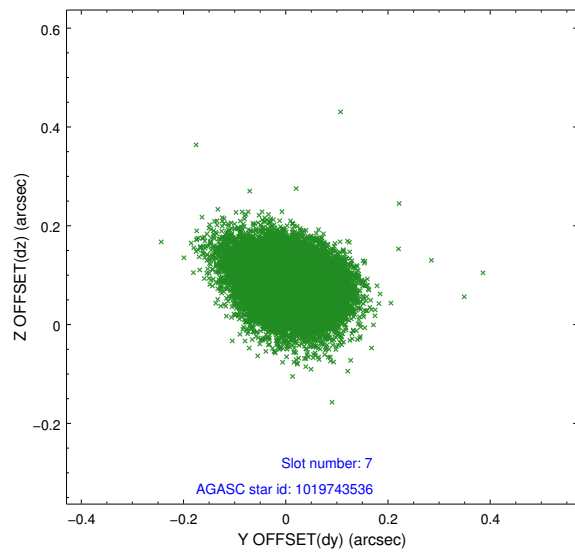
2.4.3 Slot 5



2.4.4 Slot 6

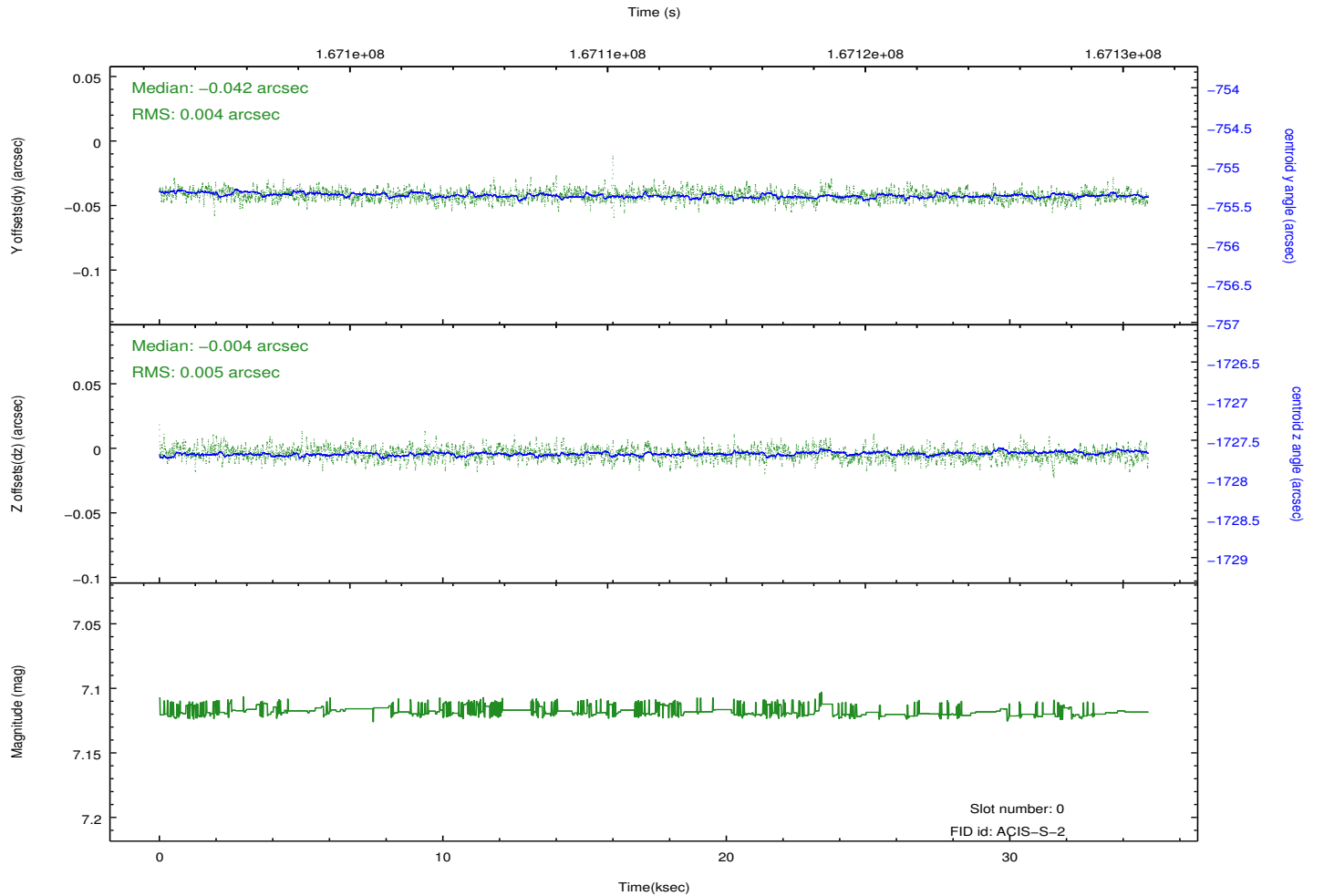
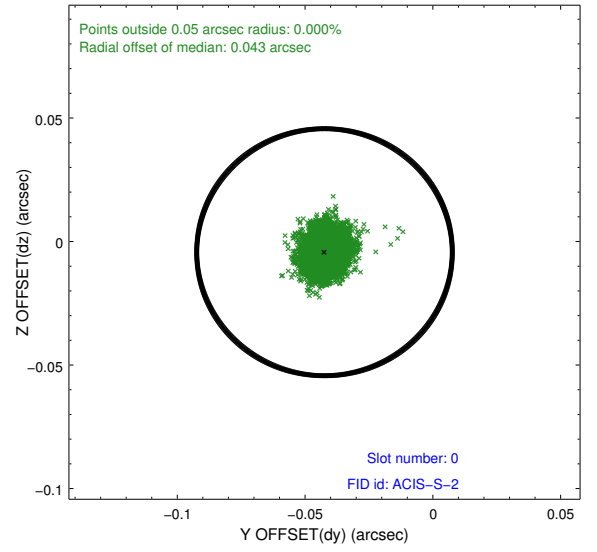
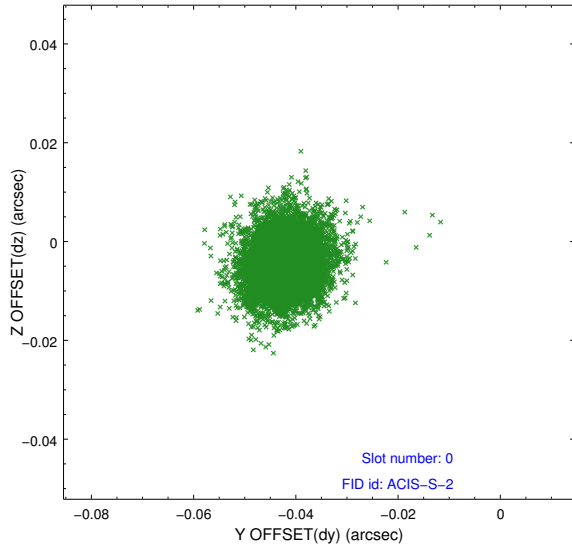


2.4.5 Slot 7

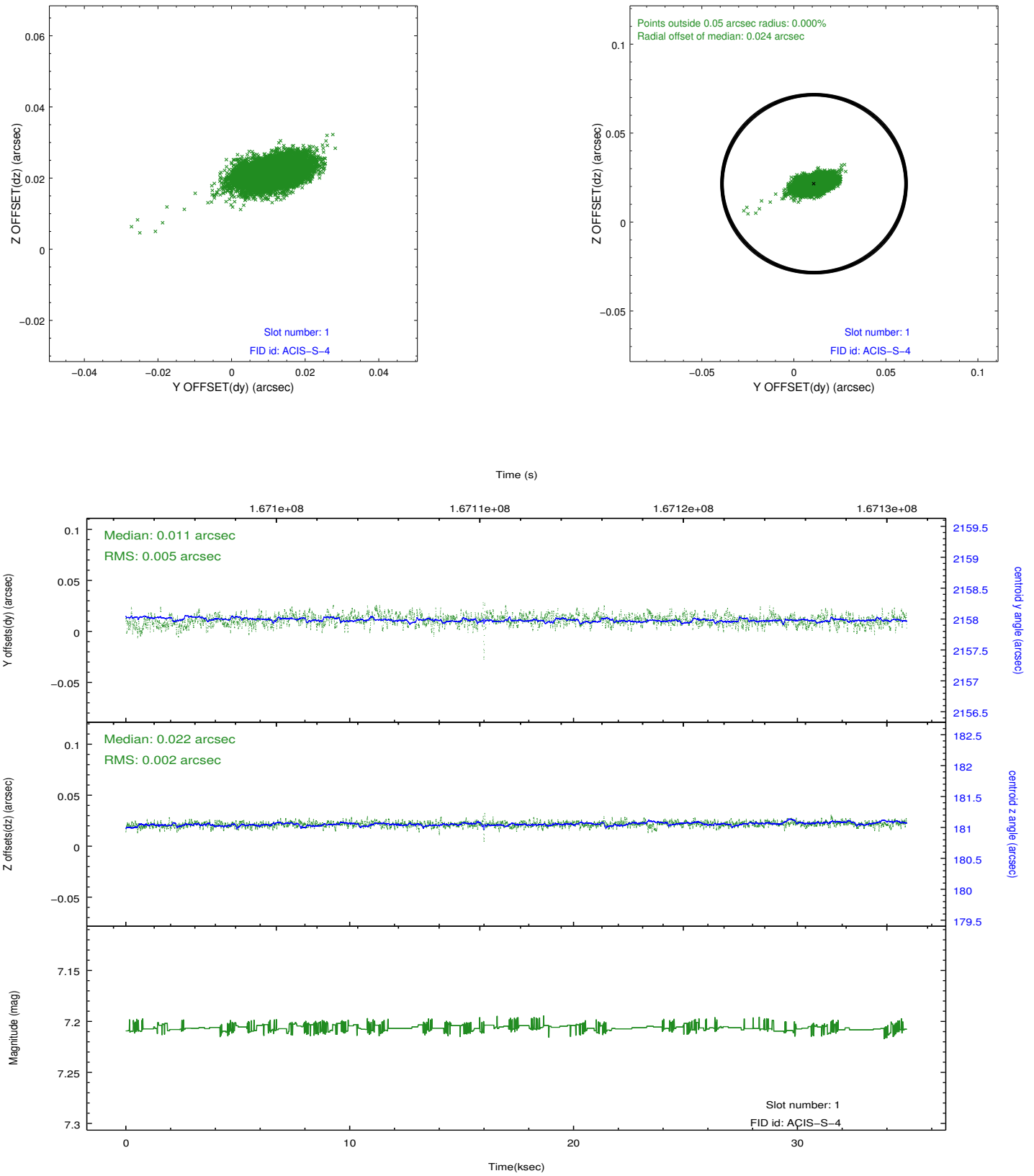


2.5 FID Slots

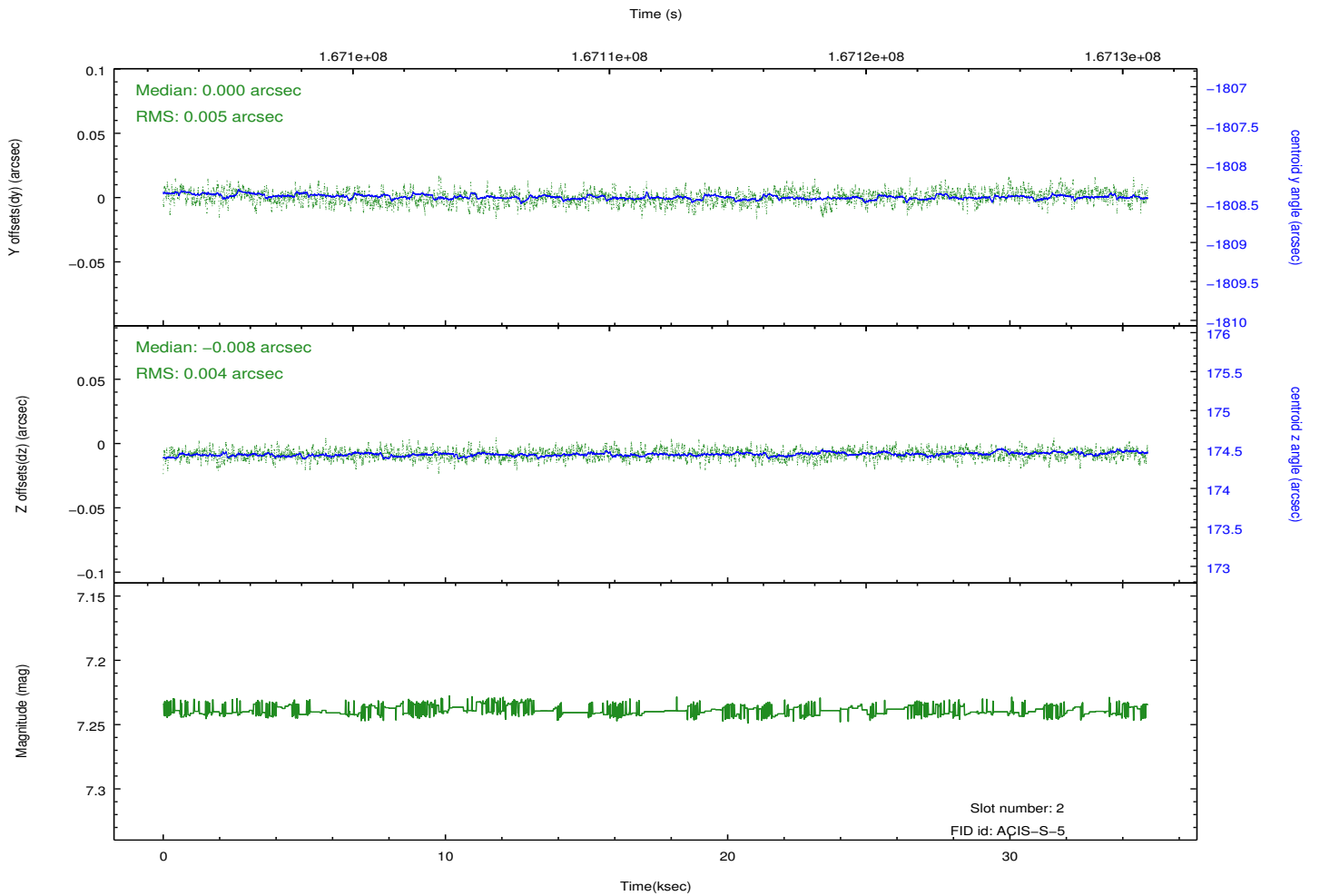
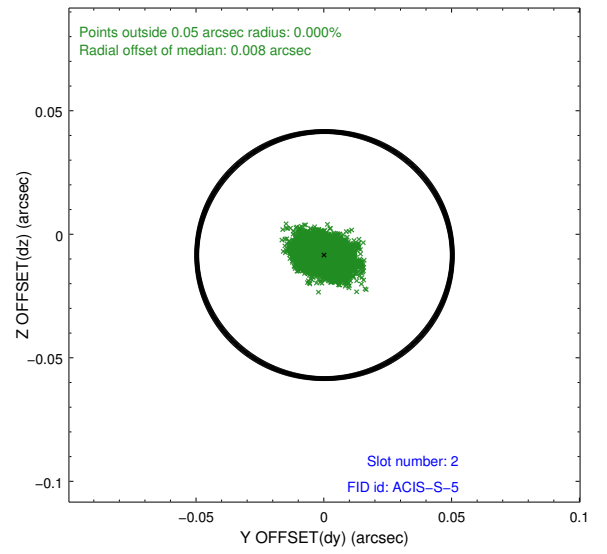
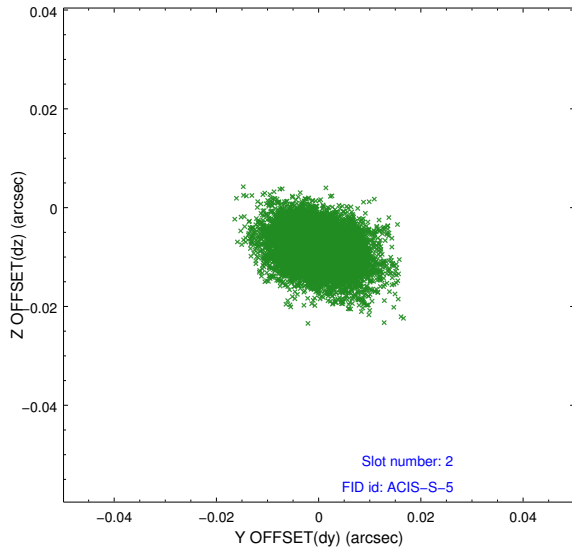
2.5.1 Slot 0



2.5.2 Slot 1



2.5.3 Slot 2



A Summary

A.1 Status

V&V Scientist	Jen Lauer
V&V Date (YYYY-MM-DD)	2012.11.14
V&V Edition	1
V&V Disposition and Status	OK
V&V Charge Time	34.471

A.2 Comments