

V&V Reference Report

L2 ASCDS Version : 8.5

Observation 4471 - L2 Version 3
Chandra X-Ray Center

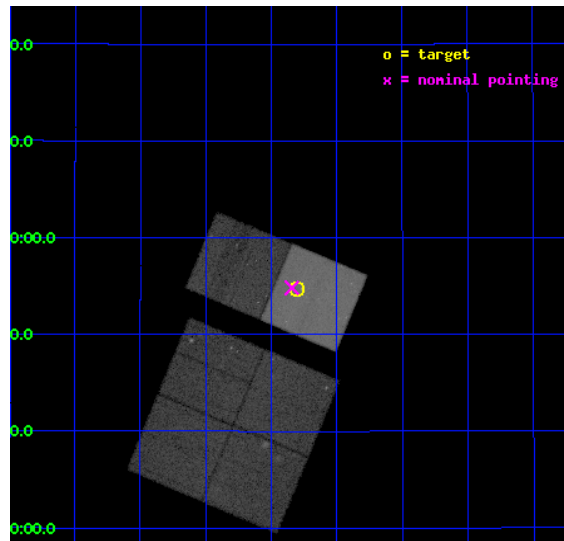
L2 Processing Date : Dec 12 2012

Contents

1	Front	2
2	OBI	3
2.1	OBI	3
2.1.1	Images	3
2.1.2	Bias	3
2.1.3	Parameters	4
2.1.4	Events	4
2.2	Compared Parameters	5
2.3	Aspect	6
2.4	Star Slots	9
2.4.1	Slot 3	9
2.4.2	Slot 4	10
2.4.3	Slot 5	11
2.4.4	Slot 6	12
2.4.5	Slot 7	13
2.5	FID Slots	14
2.5.1	Slot 0	14
2.5.2	Slot 1	15
2.5.3	Slot 2	16
A	Summary	17
A.1	Status	17
A.2	Comments	17

1 Front

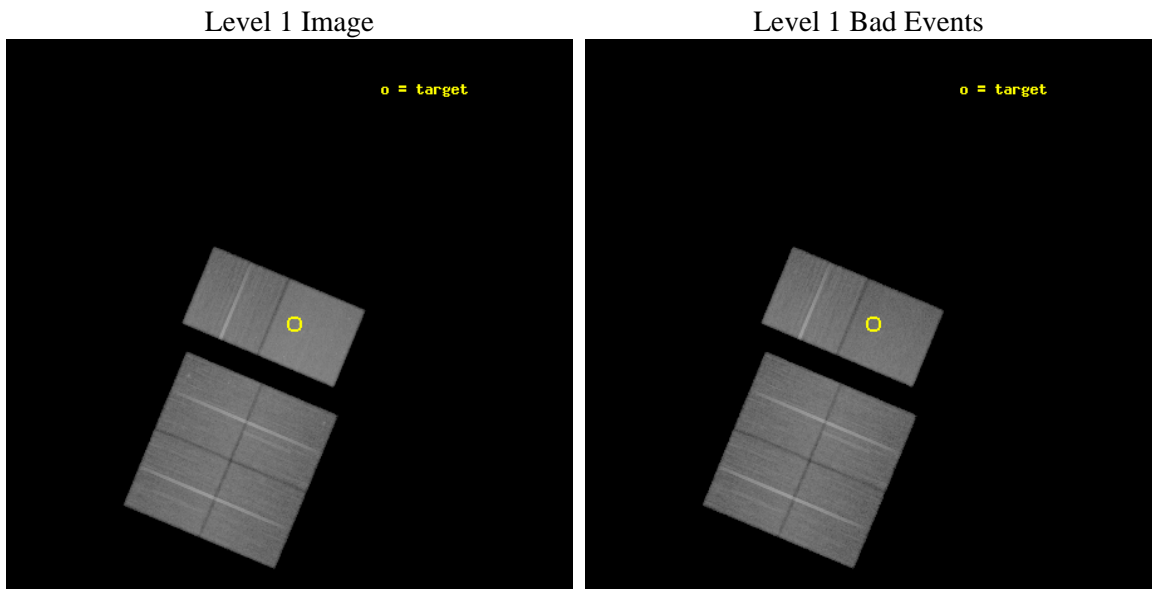
seq_num	200240	Sequence number
obs_id	4471	Observation id
title	AGE AND TEMPERATURE DEPENDENCE OF X-RAY ACTIVITY AT THE COOL END OF THE MAIN-SEQUENCE	Proposal title
observer	Dr Beate Stelzer	Principal investigator
object	HD 130948 BC	Source name
dtcycle	0	
cycle	P	events from which exps? Prim/Second/Both
ra_targ	222.575417	Observer's specified target RA [deg]
dec_targ	23.911667	Observer's specified target Dec [deg]
ra_nom	222.58574128693	Nominal RA [deg]
dec_nom	23.913771703054	Nominal Dec [deg]
roll_nom	22.652439295732	Nominal Roll [deg]
revision	3	Processing version of data
ontime	41743.999844491	Sum of GTIs [s]
livetime	41215.412183241	Livetime [s]
ontime0	41743.999844491	Sum of GTIs [s]
ontime1	41740.75898385	Sum of GTIs [s]
ontime2	41743.999844491	Sum of GTIs [s]
ontime3	41743.999844491	Sum of GTIs [s]
ontime6	41743.999844491	Sum of GTIs [s]
ontime7	41743.999844491	Sum of GTIs [s]
l2events	358231	Number of level 2 events



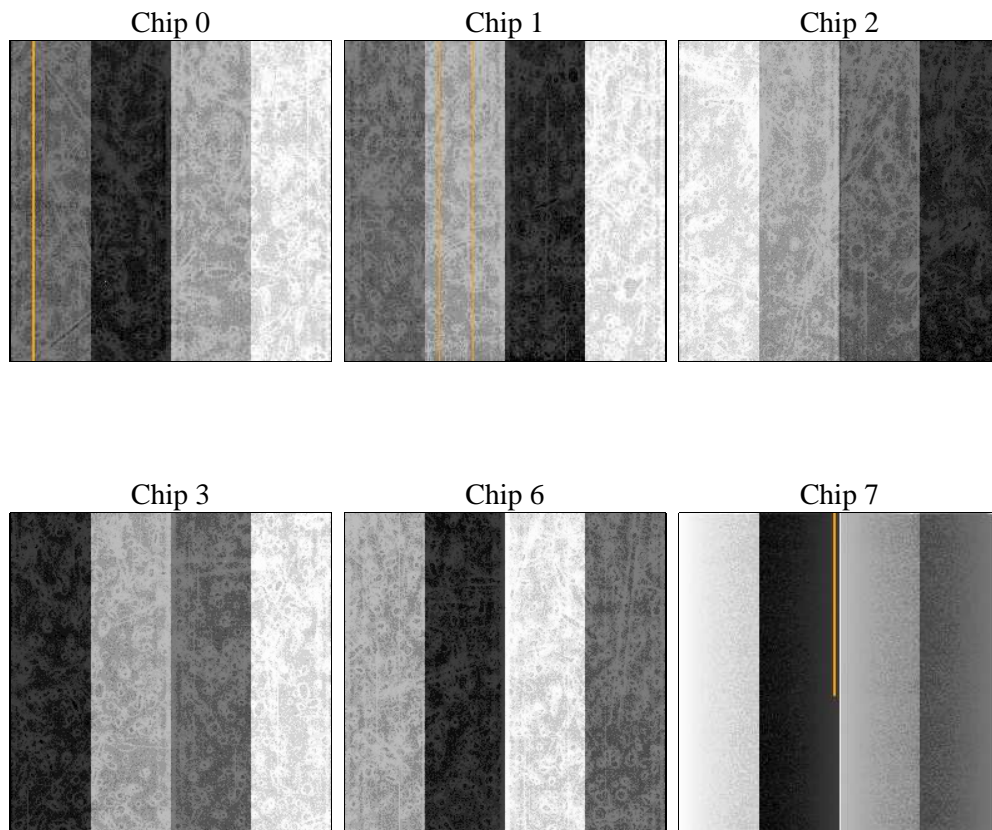
2 OBI

2.1 OBI

2.1.1 Images



2.1.2 Bias



2.1.3 Parameters

obi_num	0	Obi number	sched_exp_time	41569.118000	[s] Scheduled observation exposure time
ascdsver	8.5	Processing system revision	ontime	41743.999844491	Sum of GTIs [s]
caldbver	4.5.4	 	ontime0	41743.999844491	Sum of GTIs [s]
date	2012-12-12T03:17:28	Date and time of file creation	ontime1	41740.75898385	Sum of GTIs [s]
revision	3	Processing version of data	ontime2	41743.999844491	Sum of GTIs [s]
			ontime3	41743.999844491	Sum of GTIs [s]
			ontime6	41743.999844491	Sum of GTIs [s]
			ontime7	41743.999844491	Sum of GTIs [s]
			l1events	2093766	Number of level 1 events

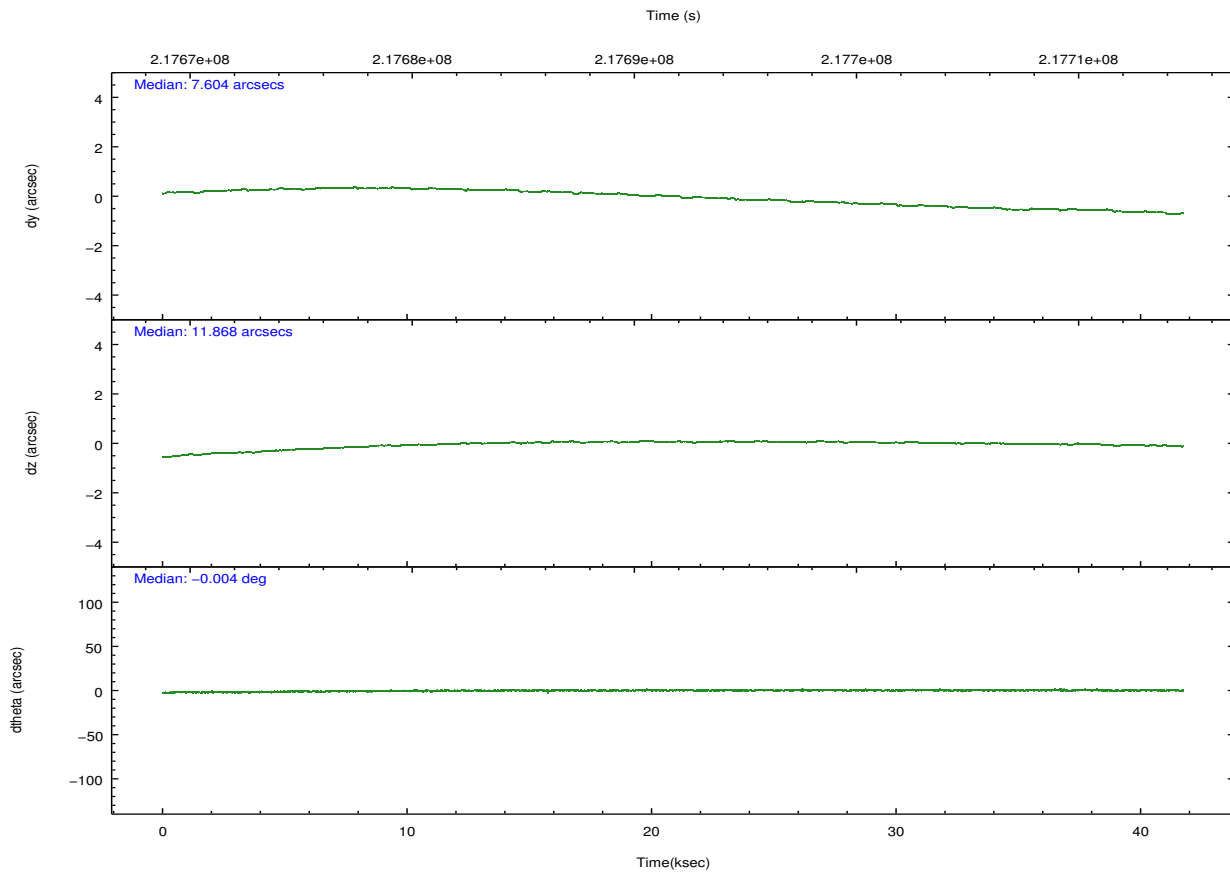
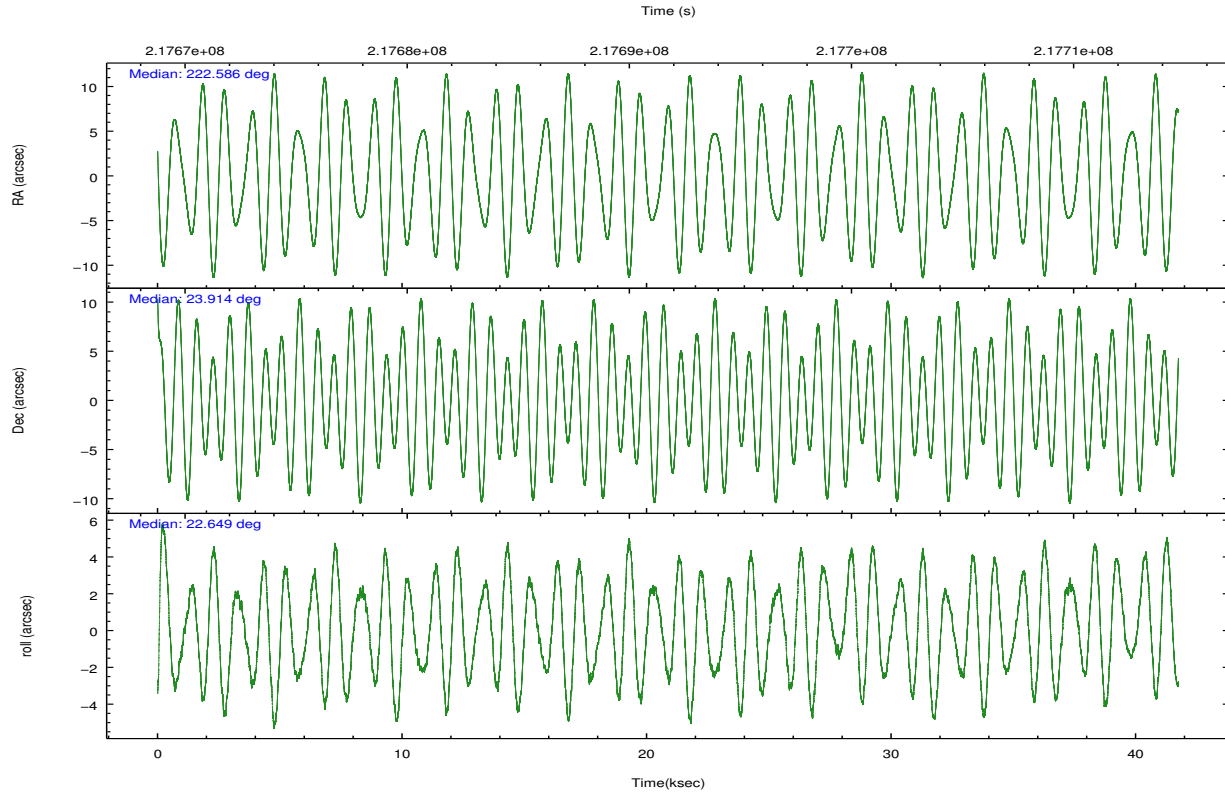
2.1.4 Events

	ccd 0	ccd 1	ccd 2	ccd 3	ccd 6	ccd 7		ccd 0	ccd 1	ccd 2	ccd 3	ccd 6	ccd 7
level 1 events	322327	304207	332441	328544	344315	461932	grade 0 events	16689	16407	18013	17151	15918	20276
rejected events	282920	263828	293508	290528	305507	267956		5%	5%	5%	5%	4%	4%
rejected %	87%	86%	88%	88%	88%	58%	grade 1 events	199	159	218	218	173	820
								0%	0%	0%	0%	0%	0%
							grade 2 events	8771	8911	7977	7203	8216	39799
								2%	2%	2%	2%	2%	8%
							grade 3 events	3987	4027	3625	3715	3776	17853
								1%	1%	1%	1%	1%	3%
							grade 4 events	3626	3974	3636	3837	3673	17608
								1%	1%	1%	1%	1%	3%
							grade 5 events	13712	13718	12510	14604	15308	44055
								4%	4%	3%	4%	4%	9%
							grade 6 events	7085	7857	6381	6844	7926	101954
								2%	2%	1%	2%	2%	22%
							grade 7 events	268258	249154	280081	274972	289325	219567
								83%	81%	84%	83%	84%	47%

2.2 Compared Parameters

Parameter	Planned	Actual	Parameter	Planned	Actual
Instrument	ACIS	ACIS	Obspar format version number	7	7
Detector	ACIS-012367	ACIS-012367	Obspar file type	PREDICTED	ACTUAL
Grating	NONE	NONE	Obspar update status	NONE	UPDATED
Data mode	FAINT	FAINT	Number of optional ACIS chips dropped	0	0
Observation mode	POINTING	POINTING	On-chip summing requested	N	N
[deg] Pointing RA	222.568003	222.5857412869296	Subarray requested	NONE	NONE
[deg] Pointing Dec	23.891896	23.91377170305361	Alternating exposures requested	N	N
[deg] Pointing Roll	22.502999	22.65243929573206	[s] Primary exposure time	0.000000	3.2
[mm] SIM focus pos	-0.684267	-0.6828225247311905			
[mm] SIM defocus	0	0.001444936568705701			
[mm] SIM translation stage pos	-190.132523	-190.1400660498719			
[mm] SIM translation stage offset	0	0.00754346686406393			
[s] Observation start time (MET)	217671051.184000	217669533.203			
Observation start date	2004-11-24T08:09:47	2004-11-24T07:45:33			
[s] Observation end time (MET)	217712620.184000	217712833.81745			
Observation end date	2004-11-24T19:42:36	2004-11-24T19:47:13			
Read mode	TIMED	TIMED			

2.3 Aspect

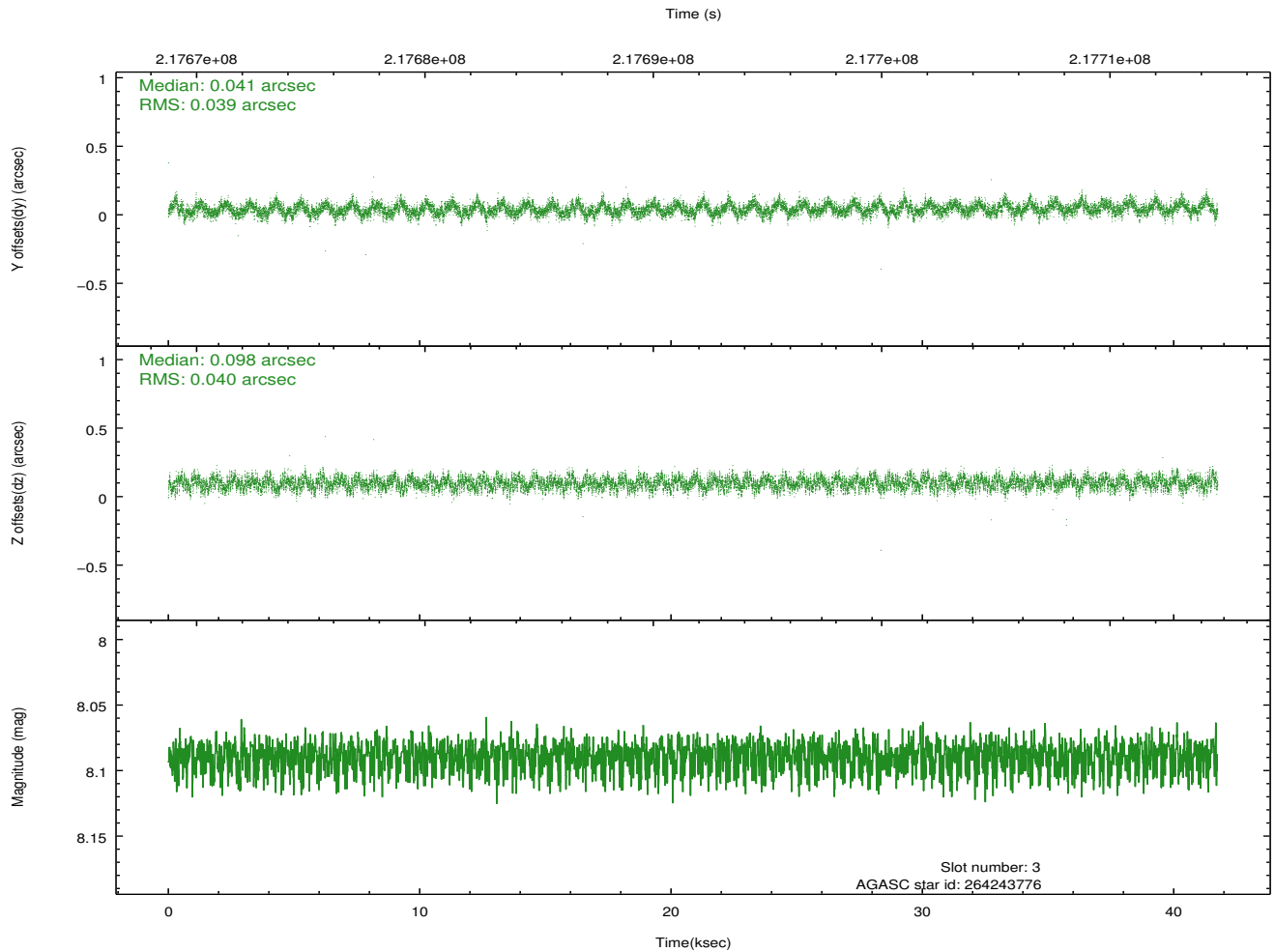
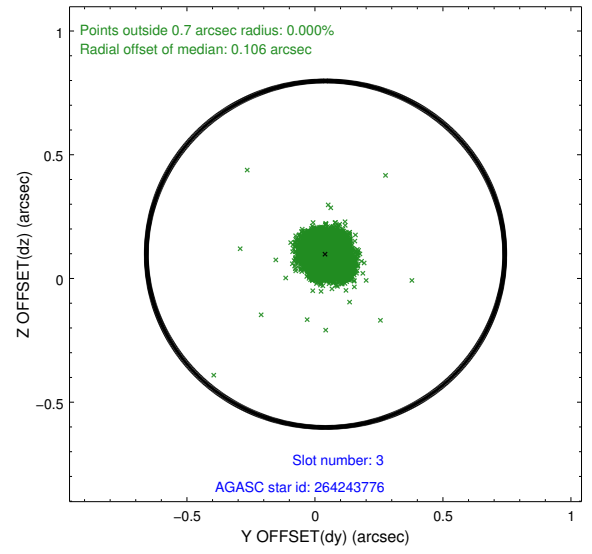
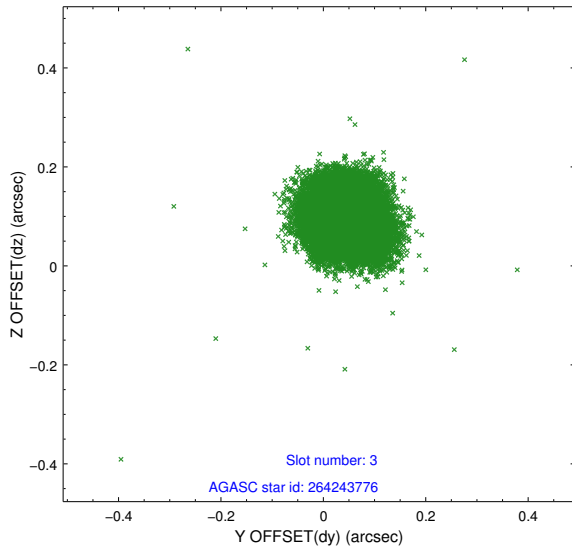


Slot Statistics

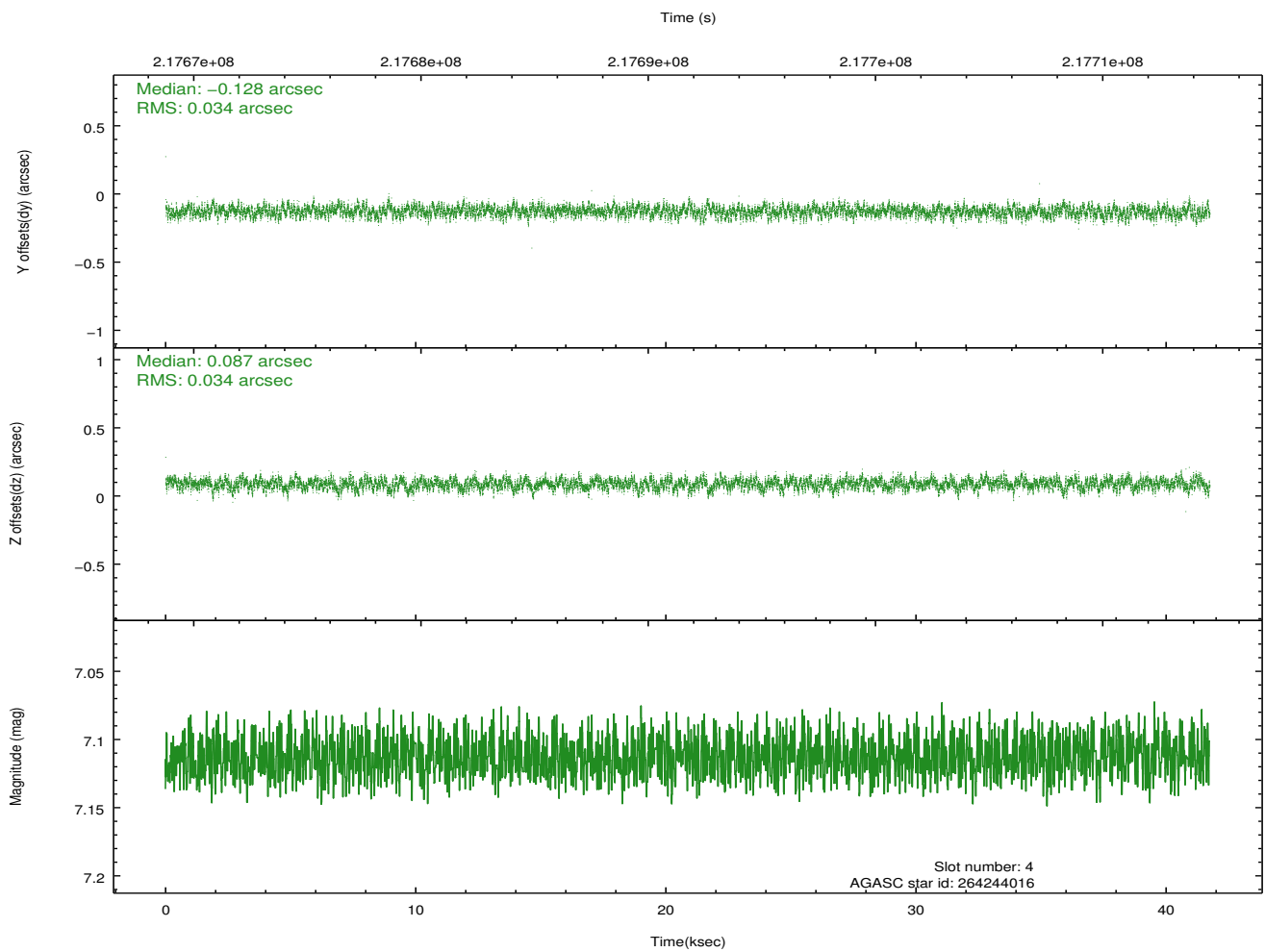
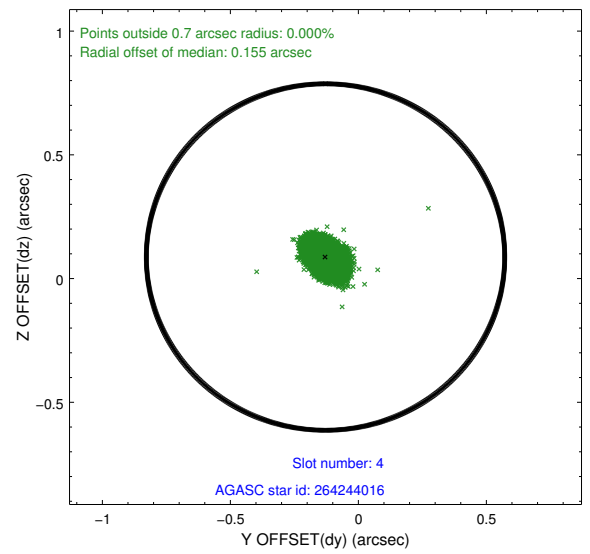
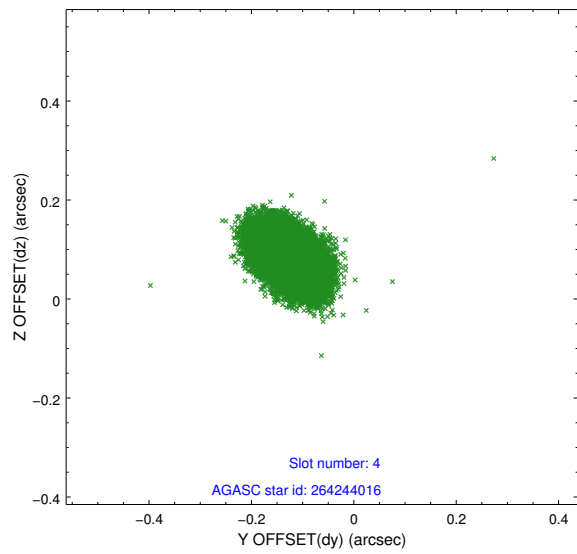
slot	status	id	mag	n_pts	med_dy	med_dz	dr1	dr2	ra	dec	mean_y	mean_z
0	FID	ACIS-S-2	7.10	10181	-0.021	-0.023	0.009	0.014	0.000000	0.000000	-760.31	-1733.13
1	FID	ACIS-S-4	7.20	10183	0.069	0.016	0.019	0.027	0.000000	0.000000	2153.05	175.39
2	FID	ACIS-S-5	7.23	10183	-0.081	0.015	0.022	0.032	0.000000	0.000000	-1813.20	169.06
3	GUIDE	264243776	8.09	20355	0.041	0.098	0.059	0.094	222.025139	23.495408	-2200.56	-629.51
4	GUIDE	264244016	7.11	20366	-0.128	0.087	0.050	0.085	223.121774	23.801362	1561.77	-995.53
5	GUIDE	264247808	8.87	20356	0.056	0.030	0.071	0.114	222.238250	23.559393	-1462.57	-688.30
6	GUIDE	264247840	7.09	20366	-0.026	-0.194	0.046	0.072	221.913453	24.097555	-1702.07	1511.90
7	GUIDE	264244712	8.90	20358	0.053	-0.021	0.069	0.113	222.948863	24.755978	2341.61	2399.38

2.4 Star Slots

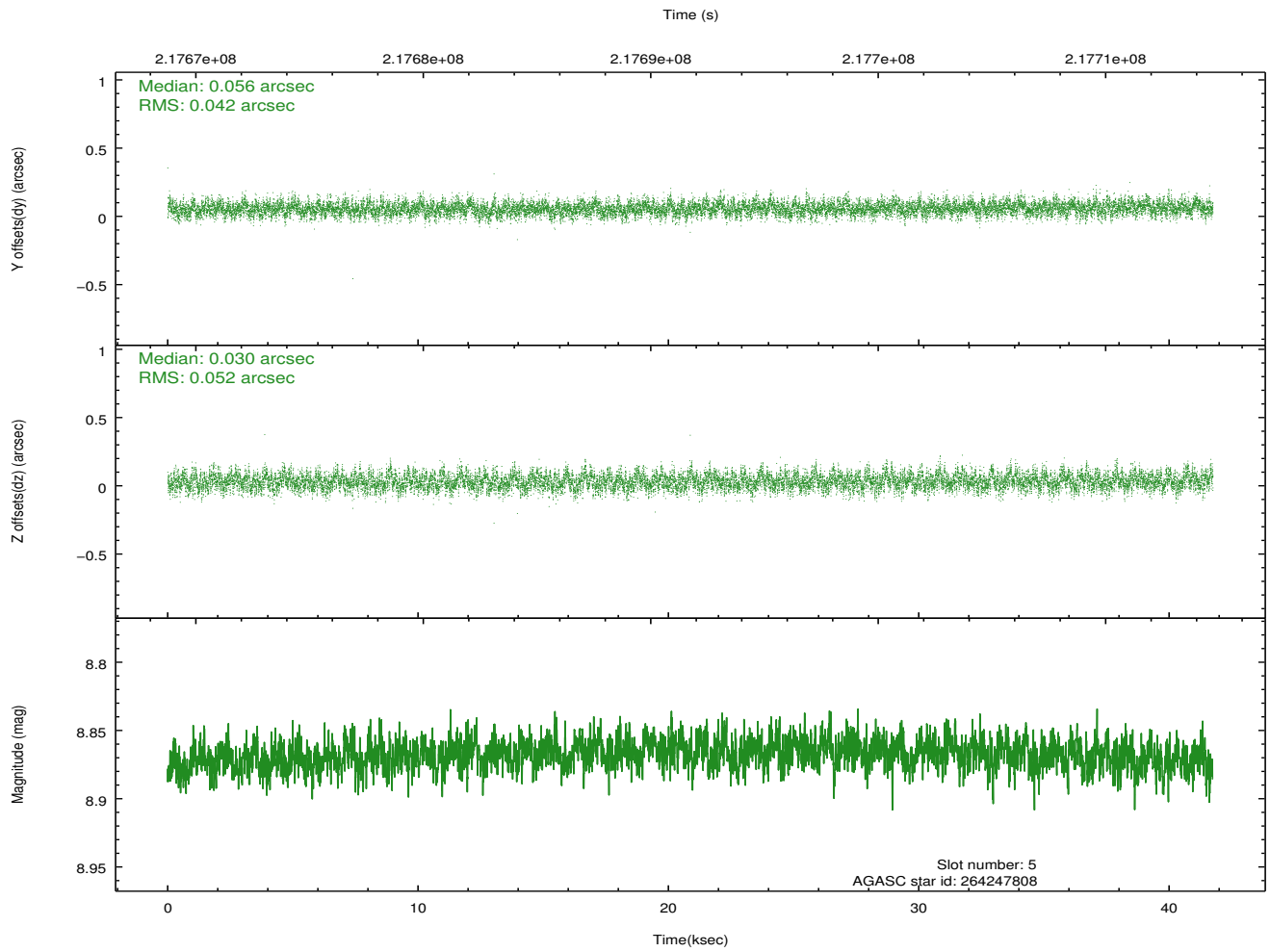
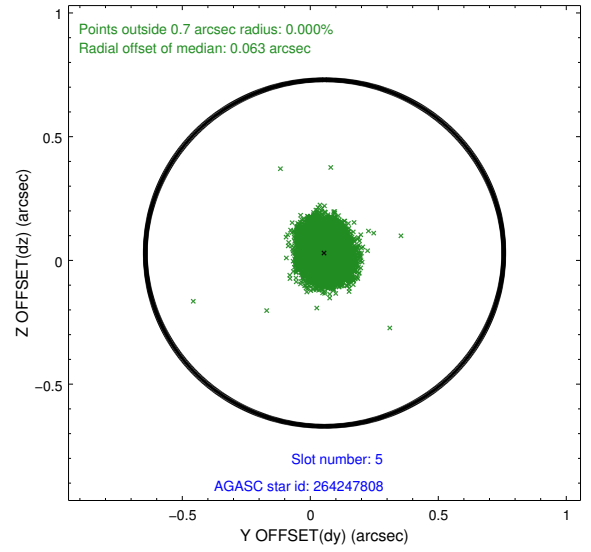
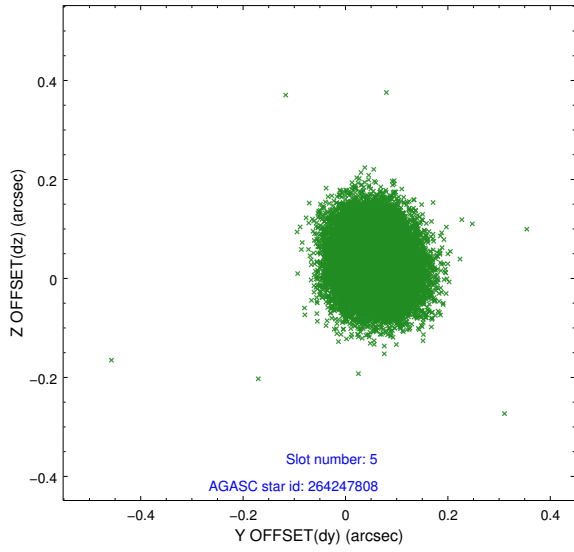
2.4.1 Slot 3



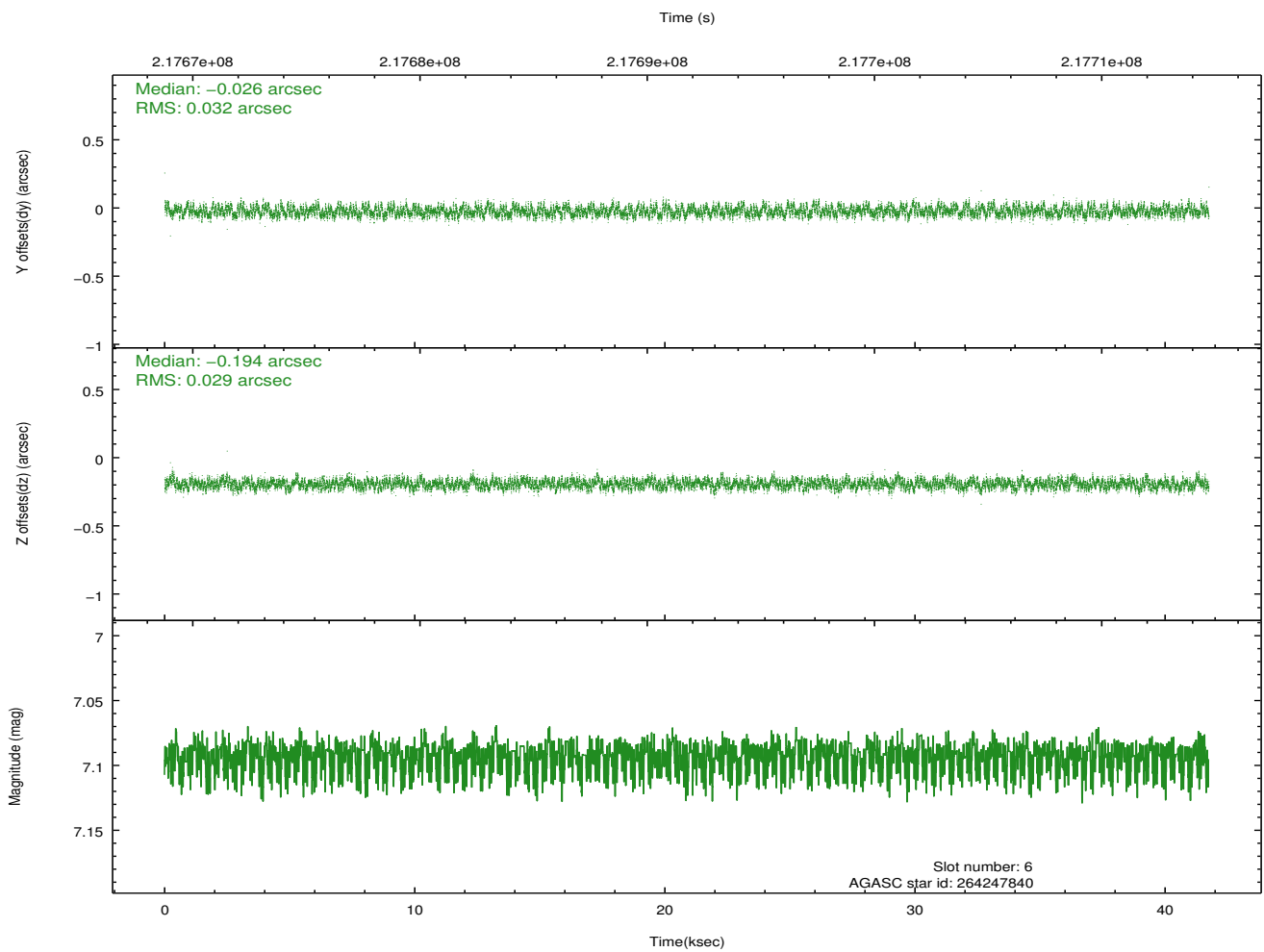
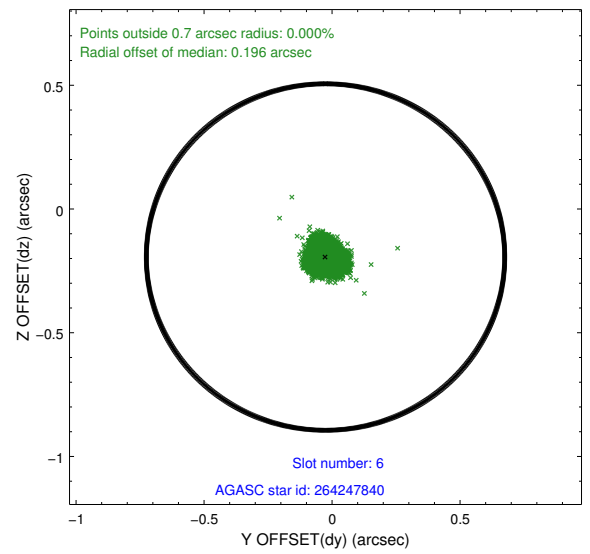
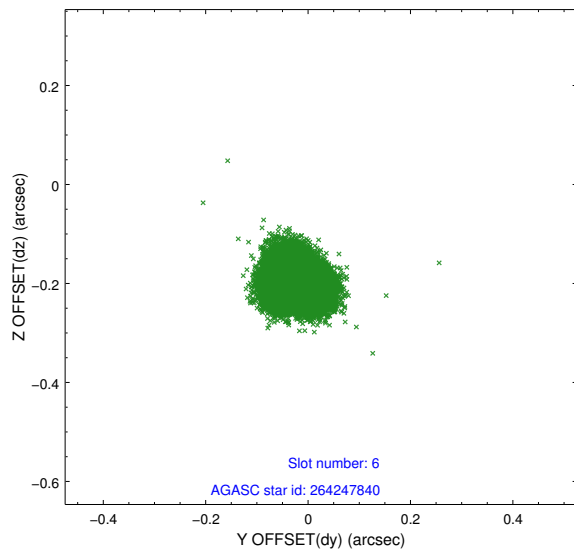
2.4.2 Slot 4



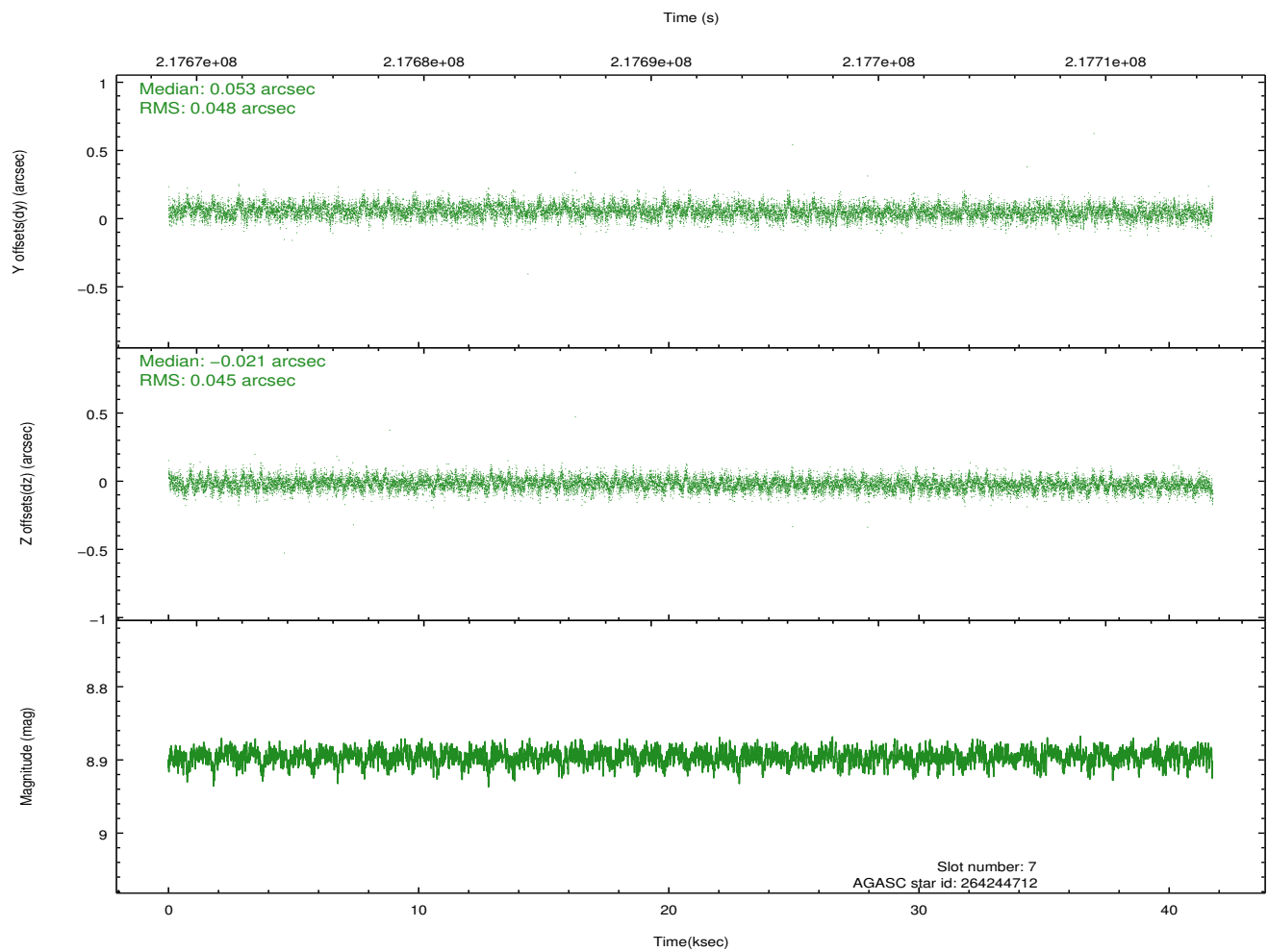
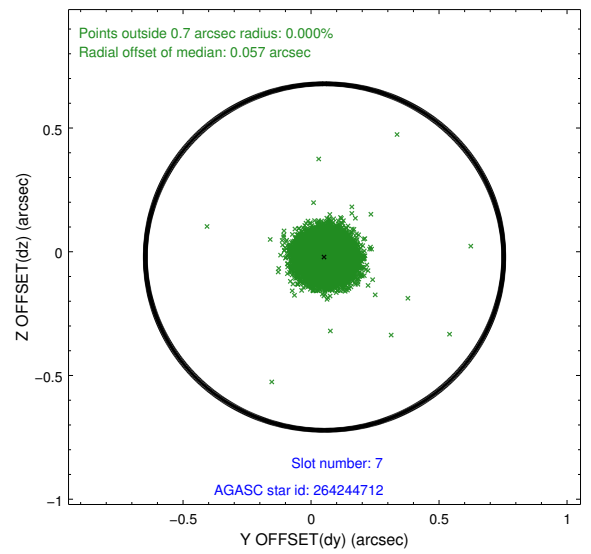
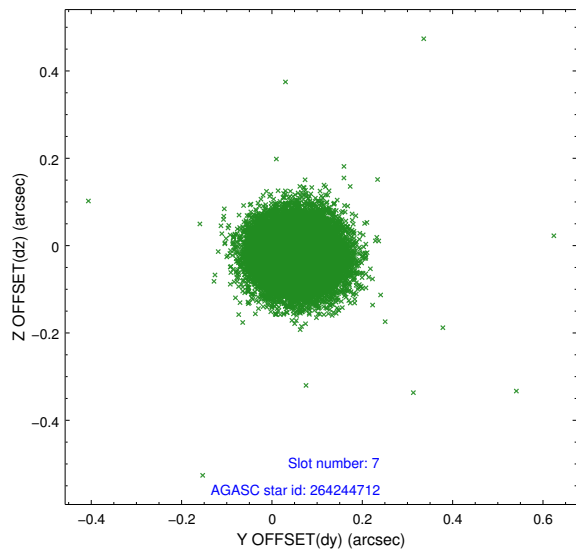
2.4.3 Slot 5



2.4.4 Slot 6

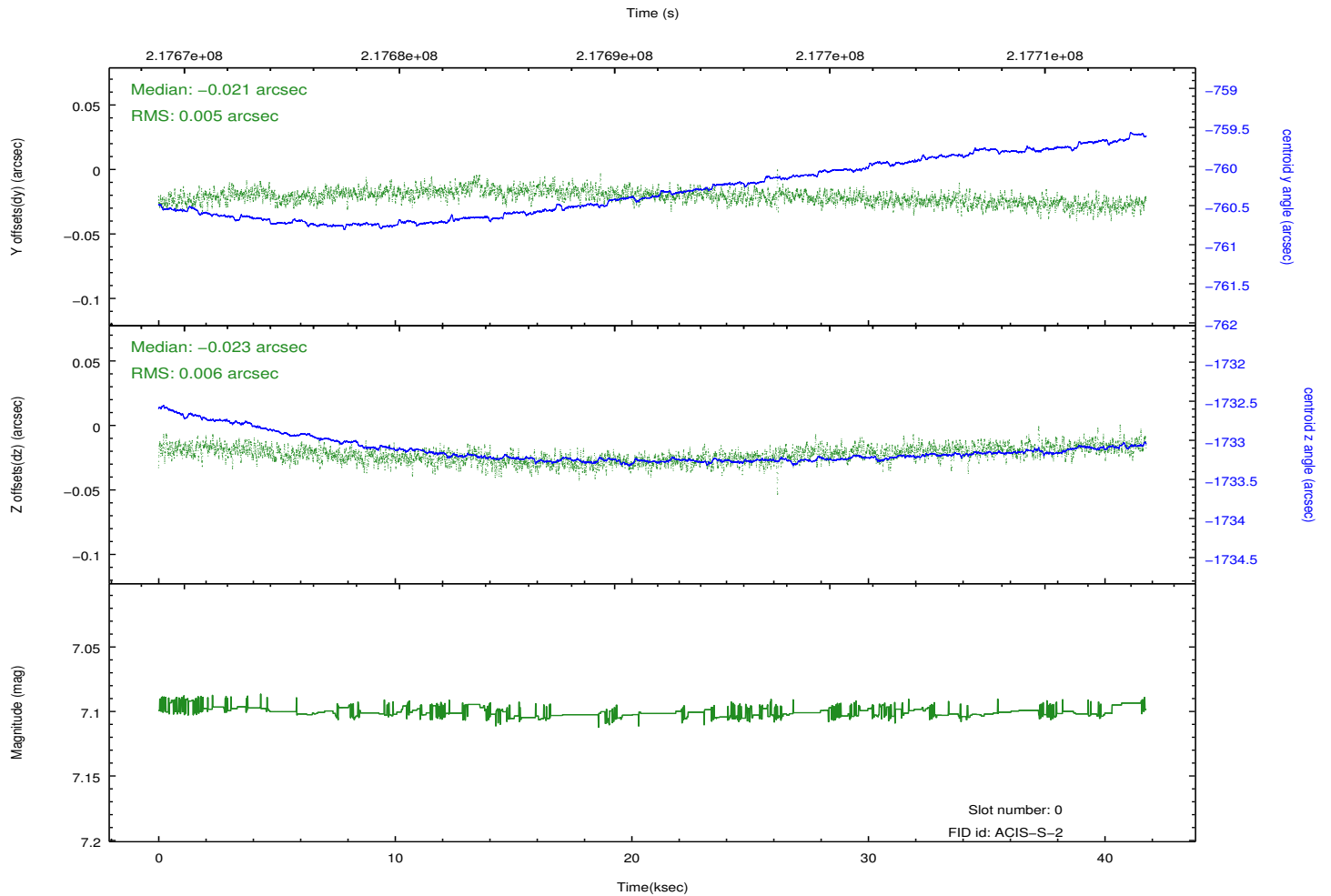
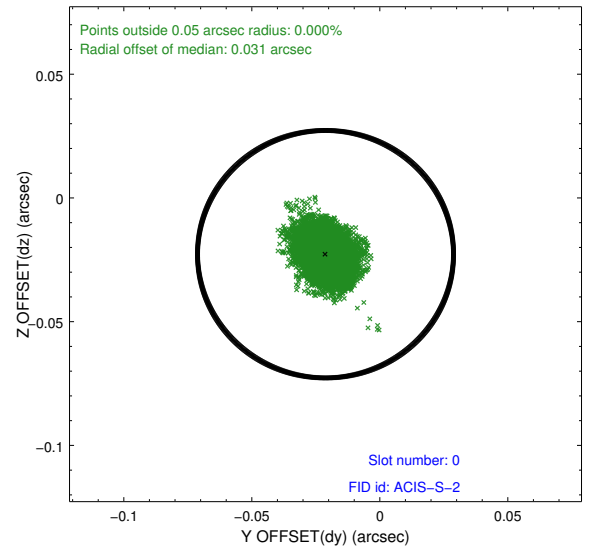
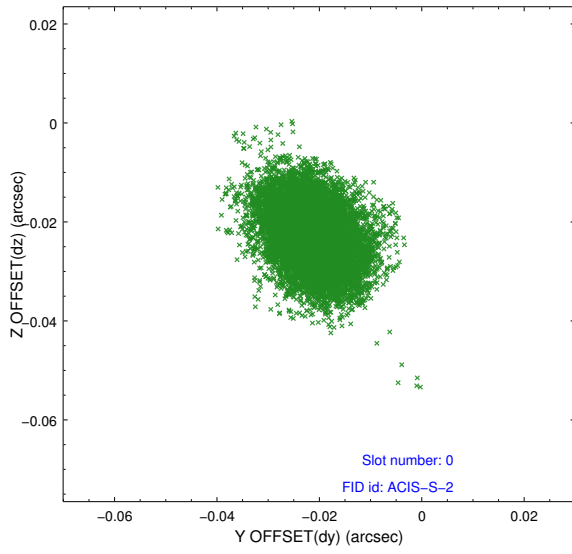


2.4.5 Slot 7

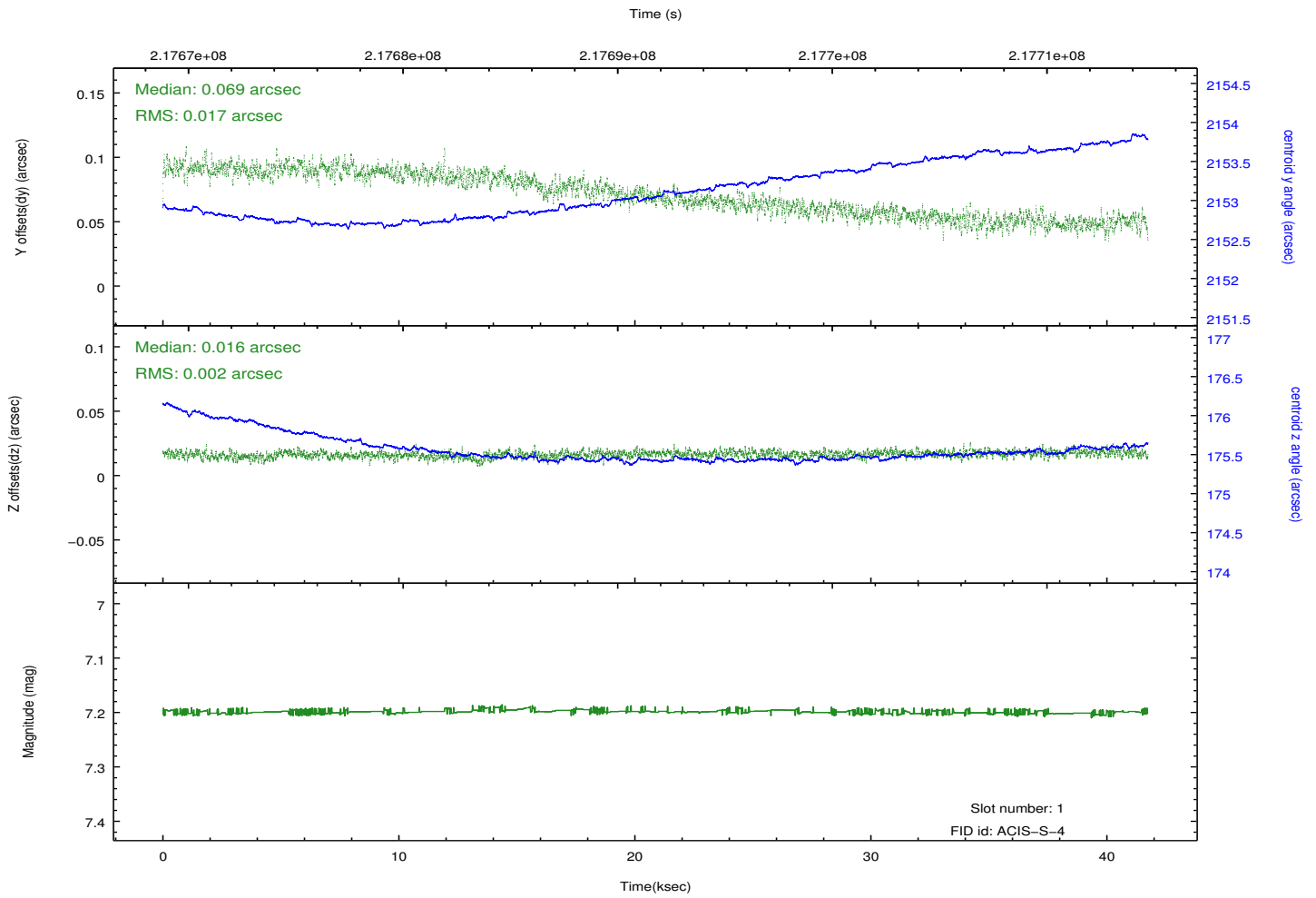
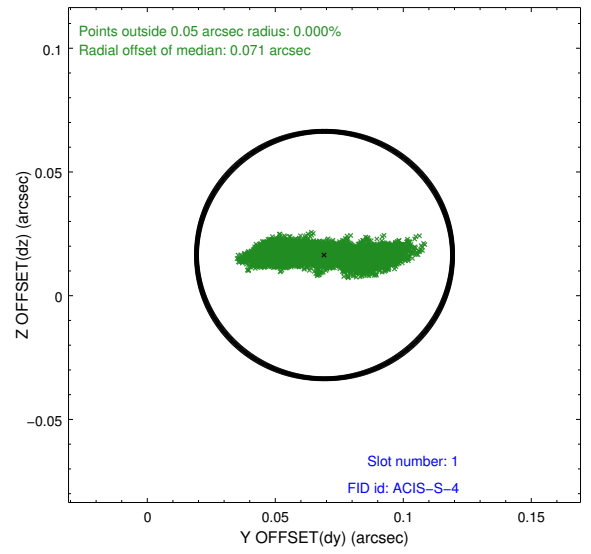
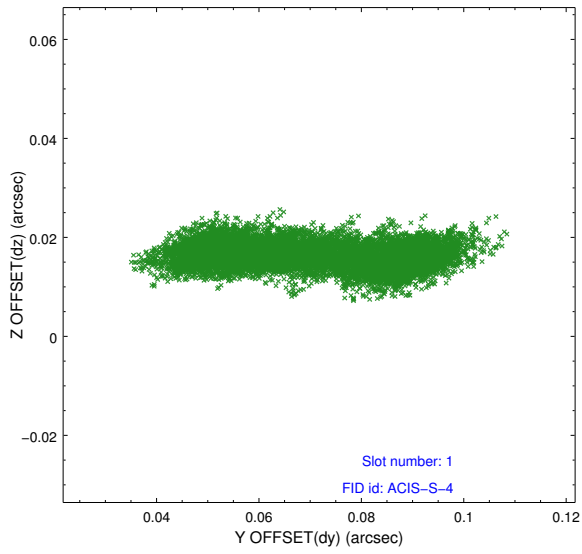


2.5 FID Slots

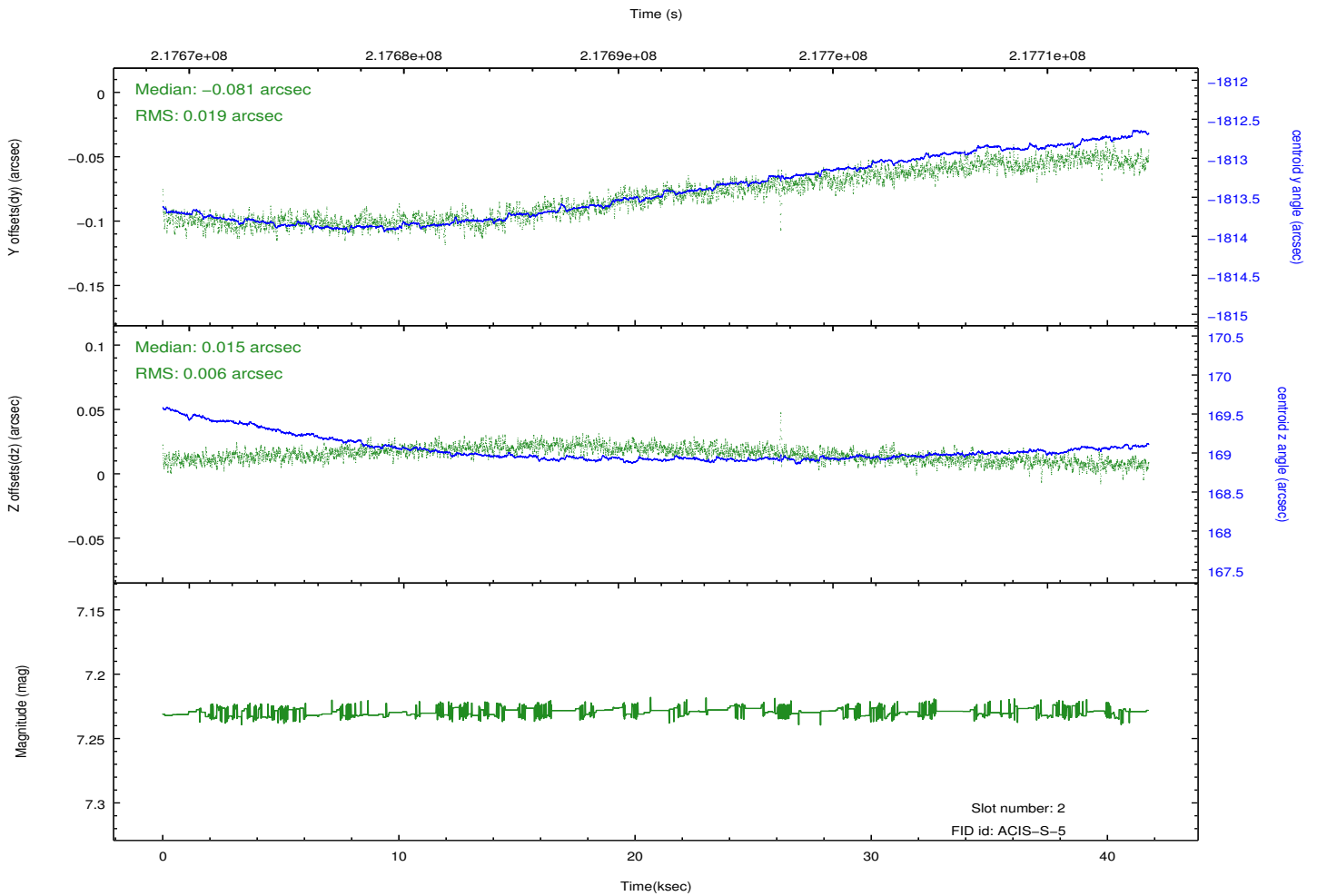
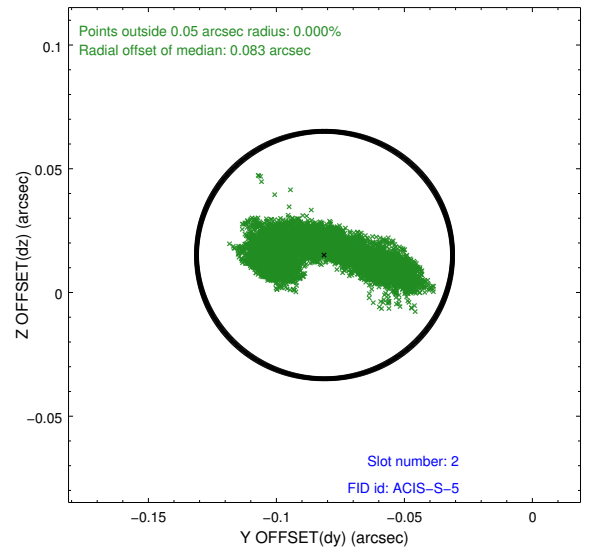
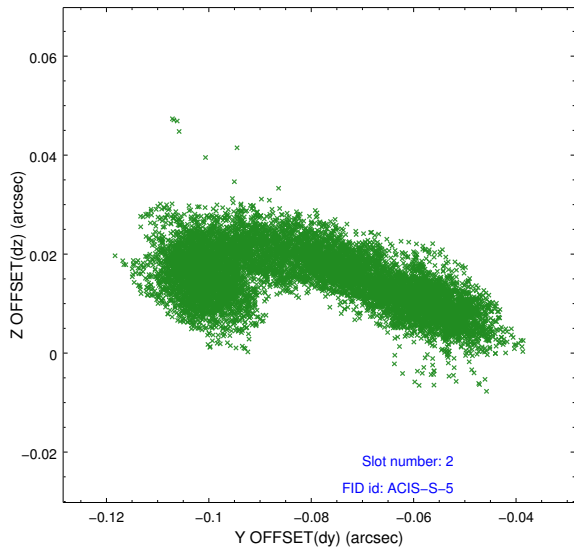
2.5.1 Slot 0



2.5.2 Slot 1



2.5.3 Slot 2



A Summary

A.1 Status

V&V Scientist	Jen Lauer
V&V Date (YYYY-MM-DD)	2013.01.04
V&V Edition	1
V&V Disposition and Status	OK
V&V Charge Time	41.74399

A.2 Comments