

V&V Reference Report

L2 ASCDS Version : 8.5

Observation 4951 - L2 Version 3
Chandra X-Ray Center

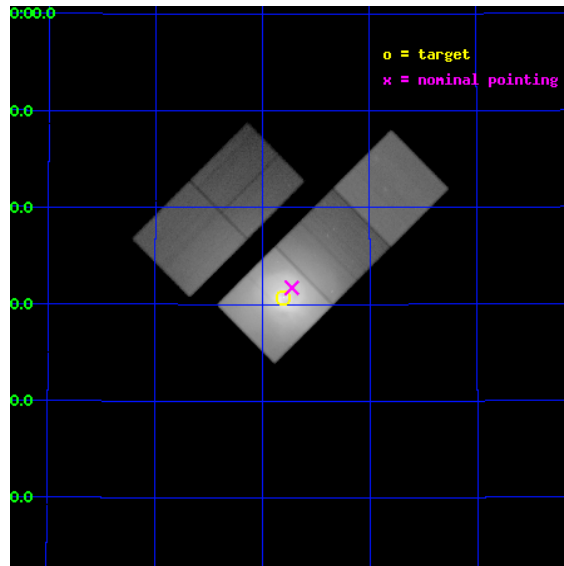
L2 Processing Date : Dec 11 2012

Contents

1	Front	2
2	OBI	3
2.1	OBI	3
2.1.1	Images	3
2.1.2	Bias	3
2.1.3	Parameters	4
2.1.4	Events	4
2.2	Compared Parameters	5
2.3	Aspect	6
2.4	Star Slots	9
2.4.1	Slot 3	9
2.4.2	Slot 4	10
2.4.3	Slot 5	11
2.4.4	Slot 6	12
2.4.5	Slot 7	13
2.5	FID Slots	14
2.5.1	Slot 0	14
2.5.2	Slot 1	15
2.5.3	Slot 2	16
A	Summary	17
A.1	Status	17
A.2	Comments	17

1 Front

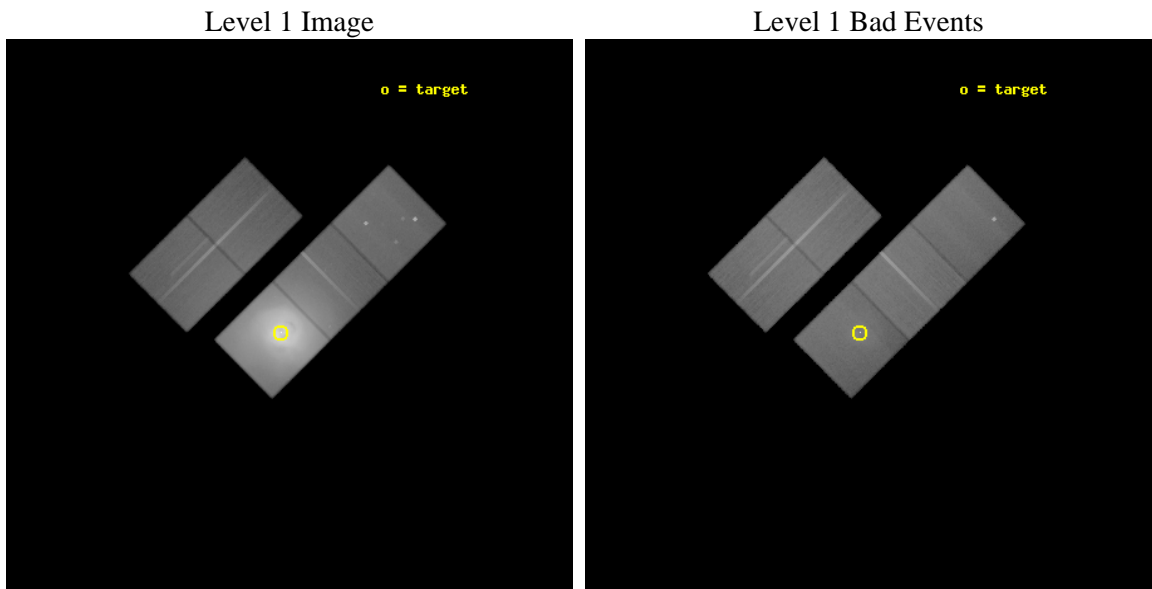
seq_num	800399	Sequence number
obs_id	4951	Observation id
title	A Megasecond Image of the Core of the Perseus Cluster	Proposal tit
observer	Professor Andrew Fabian	Principal investigator
object	Abell 426	Source name
dtcycle	0	
cycle	P	events from which exps? Prim/Second/Both
ra_targ	49.950833	Observer's specified target RA [deg]
dec_targ	41.511722	Observer's specified target Dec [deg]
ra_nom	49.931512536922	Nominal RA [deg]
dec_nom	41.528507329301	Nominal Dec [deg]
roll_nom	135.21874096975	Nominal Roll [deg]
revision	3	Processing version of data
ontime	97392.69981271	Sum of GTIs [s]
liveltime	96120.192490195	Livetime [s]
ontime2	97386.417842209	Sum of GTIs [s]
ontime3	97373.853821456	Sum of GTIs [s]
ontime5	97392.69981271	Sum of GTIs [s]
ontime6	97383.27687189	Sum of GTIs [s]
ontime7	97392.69981271	Sum of GTIs [s]
l2events	9578613	Number of level 2 events



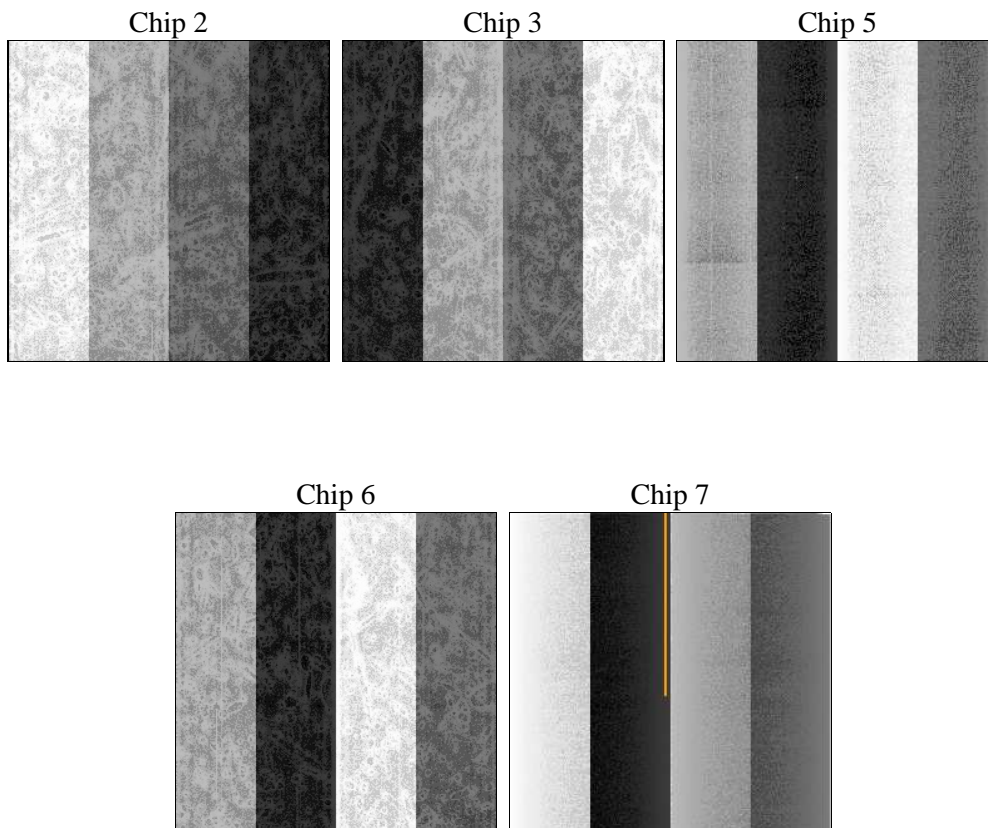
2 OBI

2.1 OBI

2.1.1 Images



2.1.2 Bias



2.1.3 Parameters

obi_num	1	Obi number	sched_exp_time	97210.000000	[s] Scheduled observation exposure time
ascdsver	8.5	Processing system revision	ontime	97392.69981271	Sum of GTIs [s]
caldbver	4.5.4	 	ontime2	97386.417842209	Sum of GTIs [s]
date	2012-12-10T17:05:25	Date and time of file creation	ontime3	97373.853821456	Sum of GTIs [s]
revision	3	Processing version of data	ontime5	97392.69981271	Sum of GTIs [s]
			ontime6	97383.27687189	Sum of GTIs [s]
			ontime7	97392.69981271	Sum of GTIs [s]
			l1events	12535203	Number of level 1 events

2.1.4 Events

	ccd 2	ccd 3	ccd 5	ccd 6	ccd 7		ccd 2	ccd 3	ccd 5	ccd 6	ccd 7
level 1 events	875237	998844	1025332	1540191	8095599	grade 0 events	177311	308662	88565	710239	2091451
rejected events	622666	584129	451044	619793	483252		20%	30%	8%	46%	25%
rejected %	71%	58%	43%	40%	5%	grade 1 events	1227	1842	776	3277	5882
							0%	0%	0%	0%	0%
						grade 2 events	33450	48853	177600	103082	2002802
							3%	4%	17%	6%	24%
						grade 3 events	13064	18451	30850	34183	888745
							1%	1%	3%	2%	10%
						grade 4 events	12974	18169	29837	34061	877504
							1%	1%	2%	2%	10%
						grade 5 events	21263	25916	69933	28463	127582
							2%	2%	6%	1%	1%
						grade 6 events	15924	20809	247724	39255	1755688
							1%	2%	24%	2%	21%
						grade 7 events	600024	556142	380047	587631	345945
							68%	55%	37%	38%	4%

2.2 Compared Parameters

Parameter	Planned	Actual	Parameter	Planned	Actual
Instrument	ACIS	ACIS	Obspar format version number	7	7
Detector	ACIS-23567	ACIS-23567	Obspar file type	PREDICTED	ACTUAL
Grating	NONE	NONE	Obspar update status	NONE	UPDATED
Data mode	FAINT	FAINT	Number of optional ACIS chips dropped	0	0
Observation mode	POINTING	POINTING	On-chip summing requested	N	N
[deg] Pointing RA	49.966822	49.931512536922	Subarray requested	NONE	NONE
[deg] Pointing Dec	41.521904	41.52850732930071	Alternating exposures requested	N	N
[deg] Pointing Roll	135.038708	135.2187409697489	[s] Primary exposure time	0.000000	3.1
[mm] SIM focus pos	-0.684267	-0.6828225247311905			
[mm] SIM defocus	0	0.001444936568705701			
[mm] SIM translation stage pos	-190.132523	-190.1425803651734			
[mm] SIM translation stage offset	0	0.01005778216563158			
[s] Observation start time (MET)	214385187.184000	214384162.56822			
Observation start date	2004-10-17T07:25:23	2004-10-17T07:09:22			
[s] Observation end time (MET)	214482397.184000	214482536.43512			
Observation end date	2004-10-18T10:25:33	2004-10-18T10:28:56			
Read mode	TIMED	TIMED			

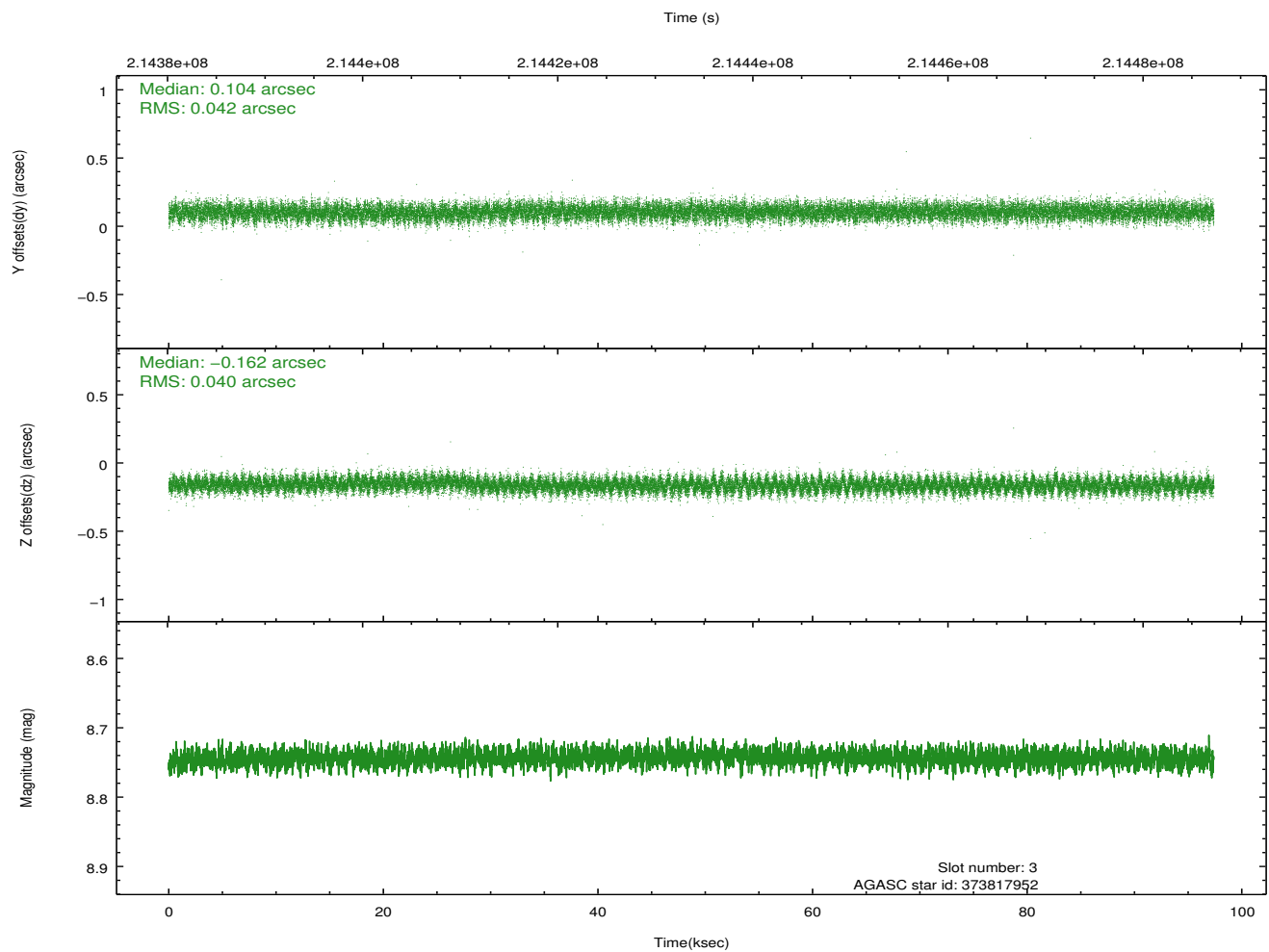
2.3 Aspect

Slot Statistics

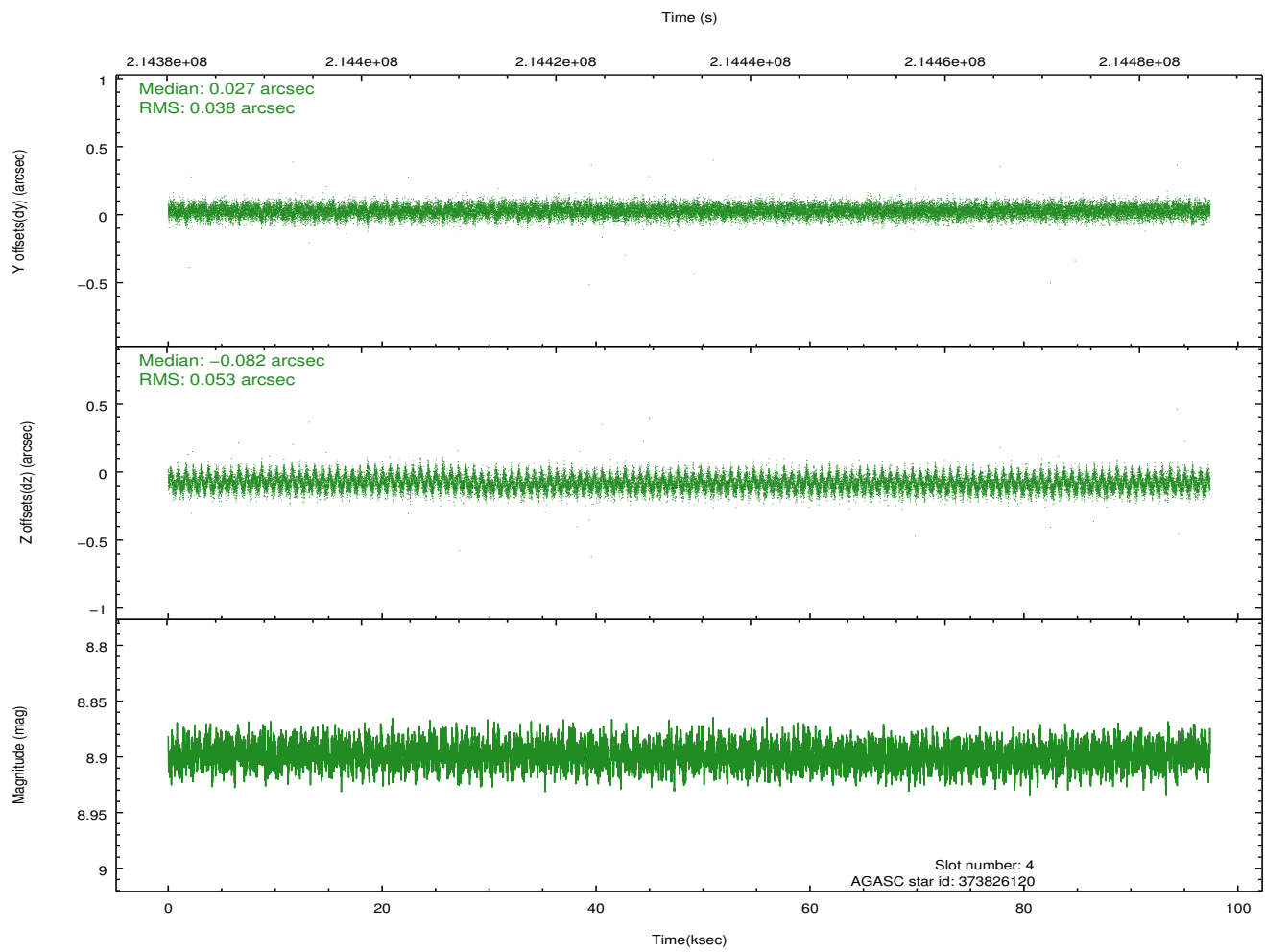
slot	status	id	mag	n_pts	med_dy	med_dz	dr1	dr2	ra	dec	mean_y	mean_z
0	FID	ACIS-S-2	7.10	23755	-0.045	-0.042	0.011	0.020	0.000000	0.000000	-759.25	-1730.21
1	FID	ACIS-S-4	7.21	23753	0.079	0.033	0.011	0.023	0.000000	0.000000	2154.19	178.44
2	FID	ACIS-S-5	7.23	23755	-0.067	0.019	0.010	0.019	0.000000	0.000000	-1812.23	171.99
3	GUIDE	373817952	8.74	47488	0.104	-0.162	0.062	0.099	49.913424	40.978510	-1279.67	1486.56
4	GUIDE	373826120	8.90	47486	0.027	-0.082	0.068	0.113	49.738165	41.186341	-414.75	1292.05
5	GUIDE	374352808	8.77	47491	-0.147	0.126	0.072	0.117	49.969955	42.208621	1741.38	-1754.49
6	GUIDE	376057824	8.35	47493	0.018	0.136	0.070	0.113	50.665569	41.926280	-289.74	-2357.60
7	GUIDE	376070040	8.41	47500	0.003	-0.016	0.071	0.114	50.072031	41.897206	755.71	-1155.03

2.4 Star Slots

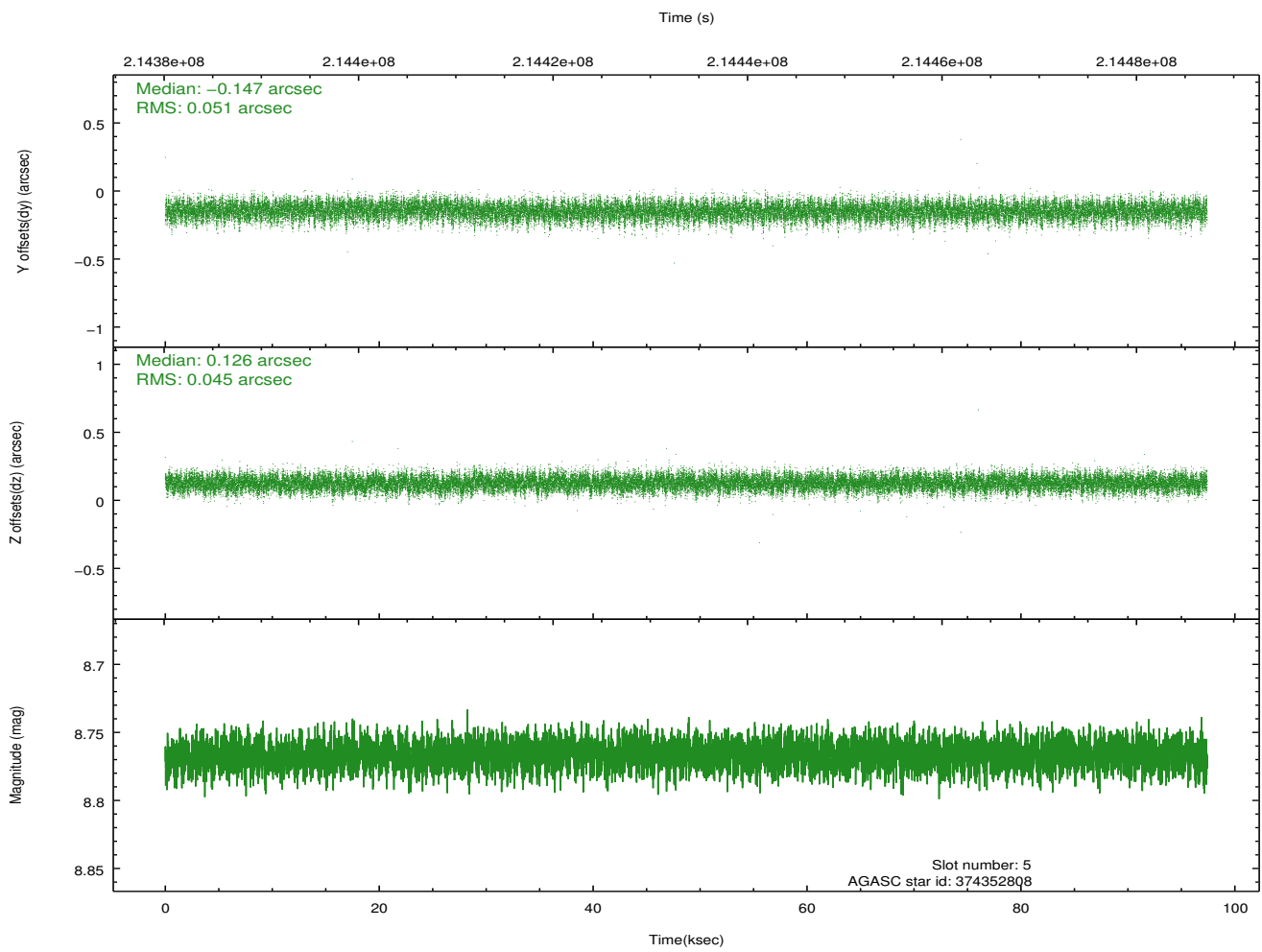
2.4.1 Slot 3



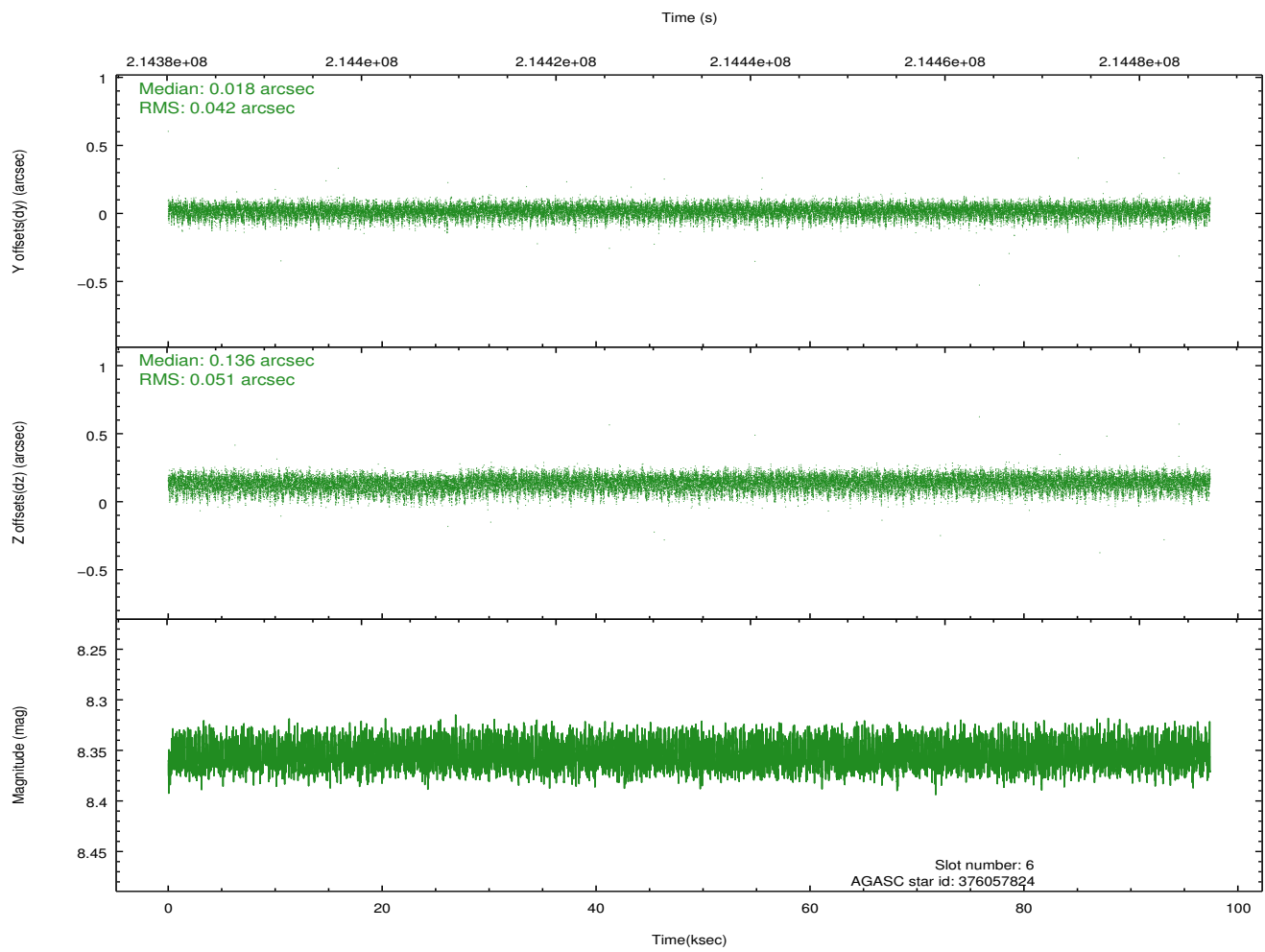
2.4.2 Slot 4



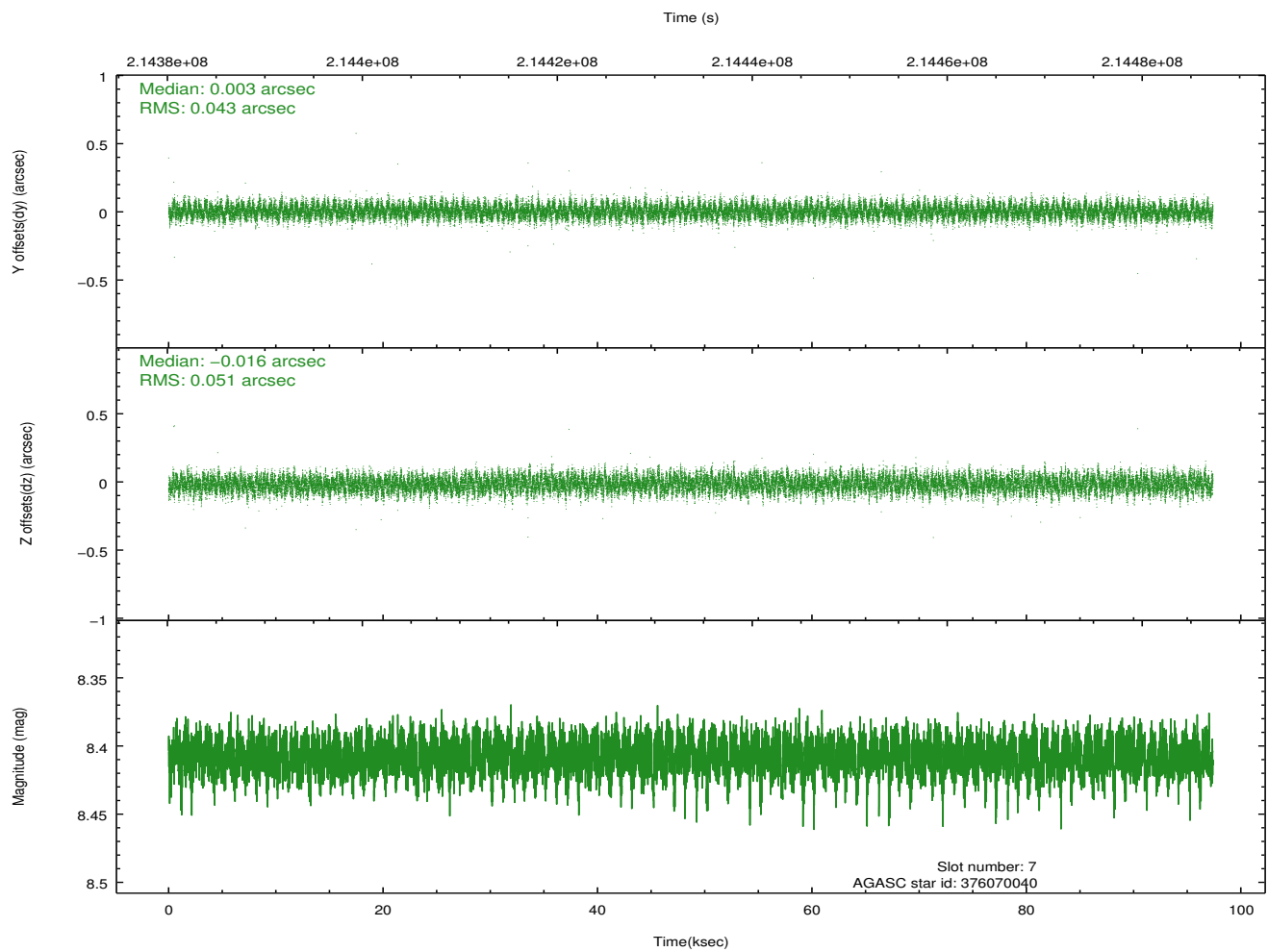
2.4.3 Slot 5



2.4.4 Slot 6

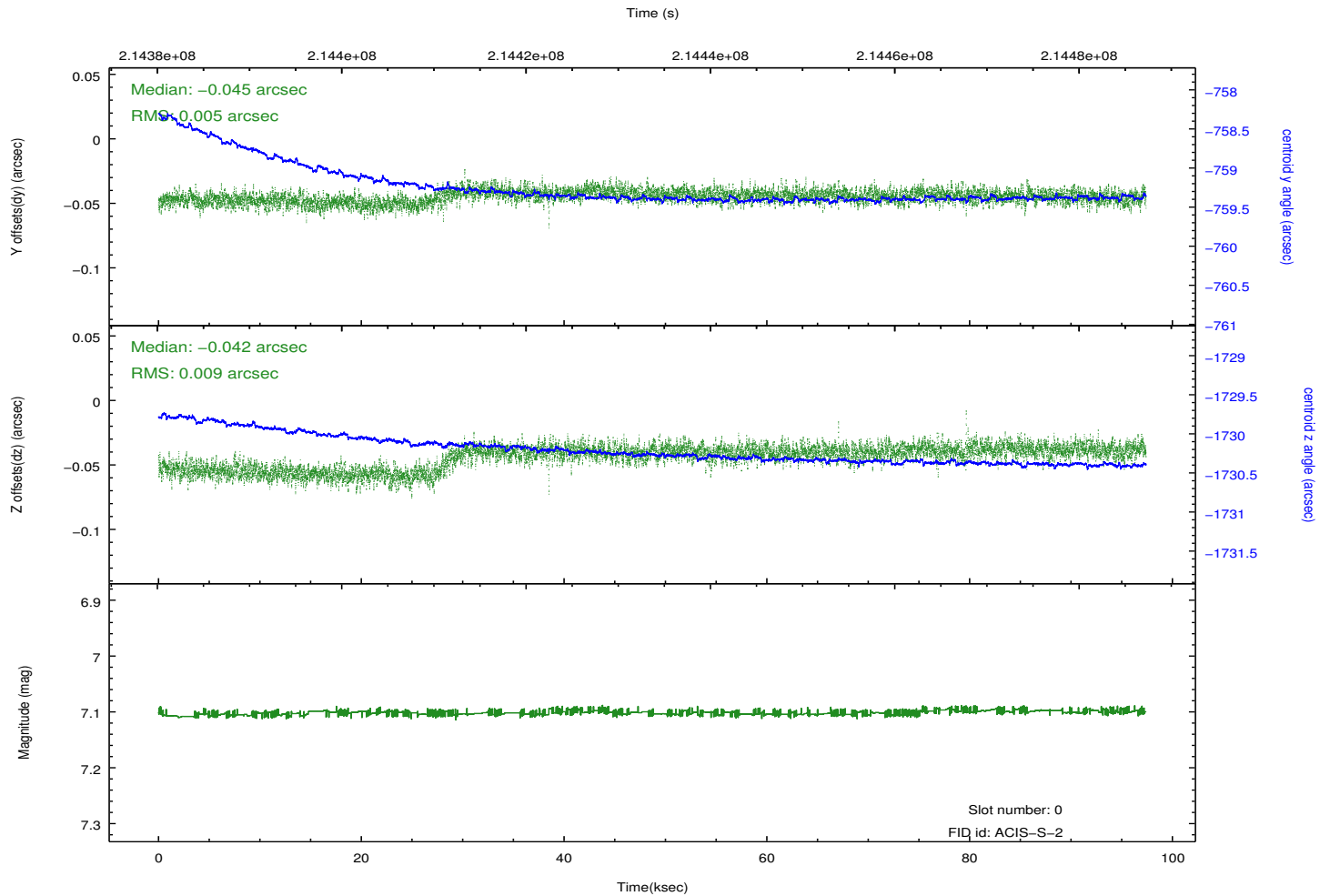
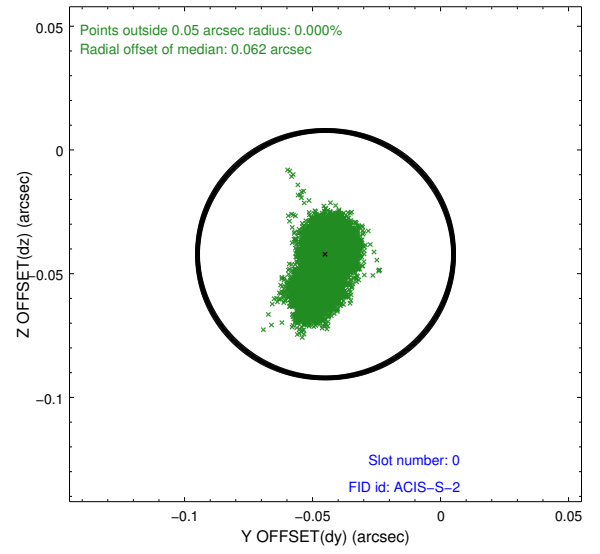
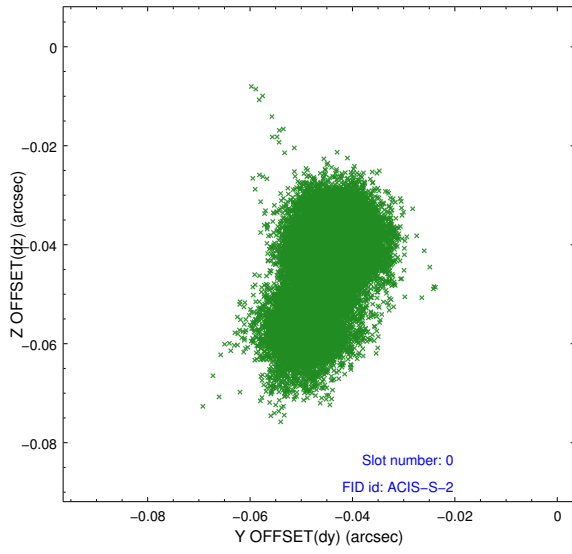


2.4.5 Slot 7

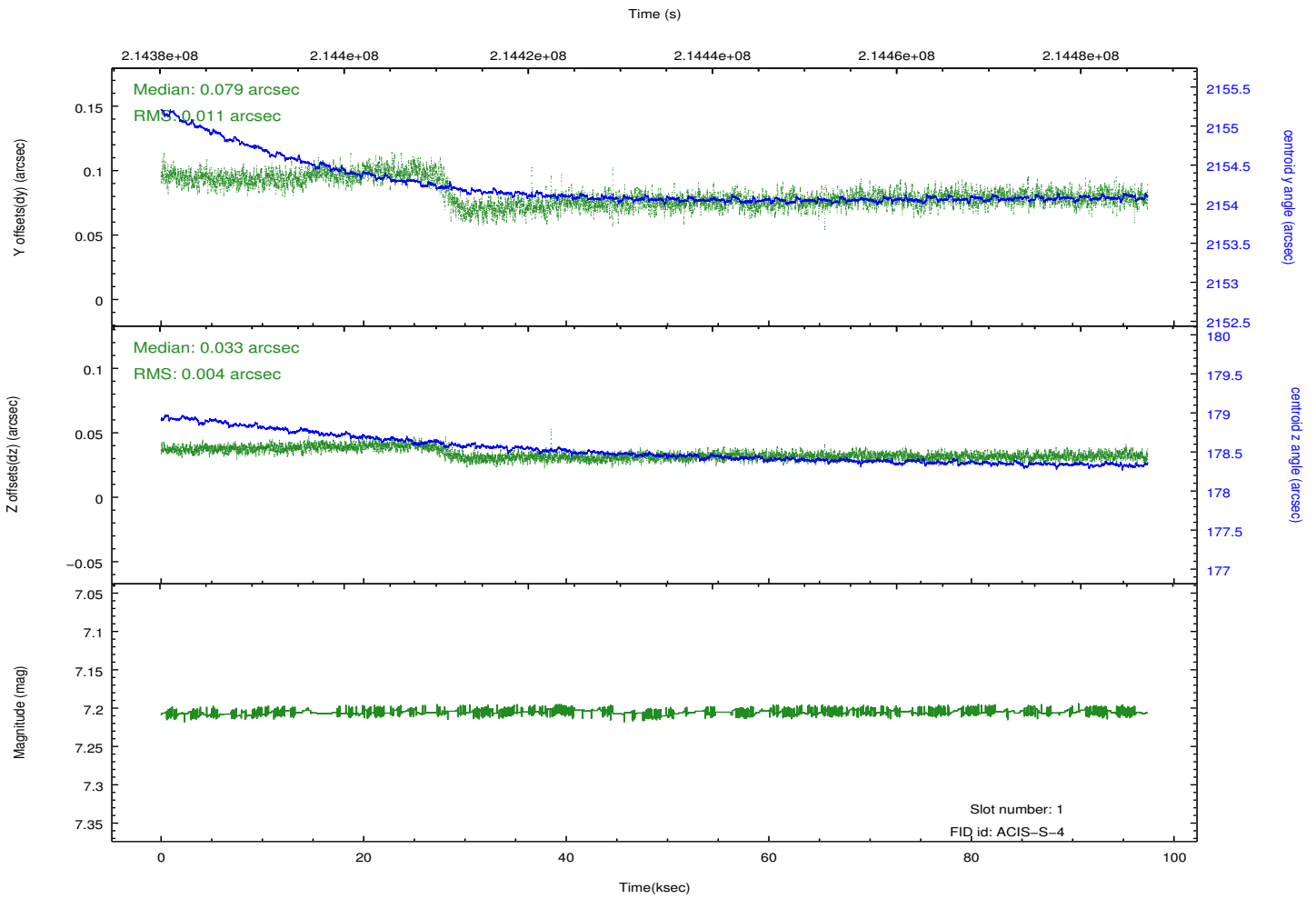
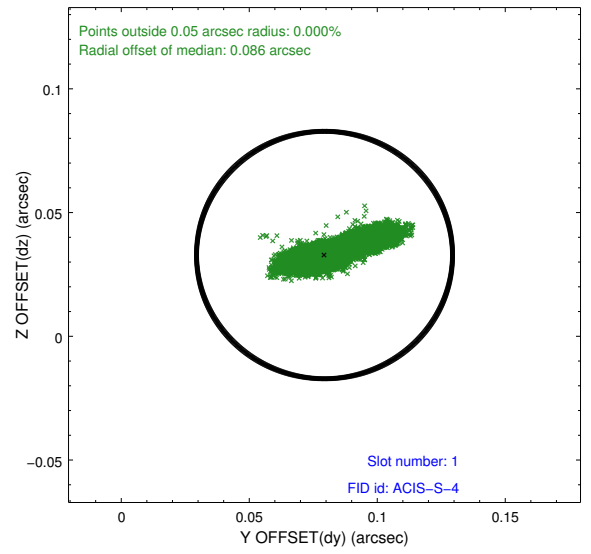
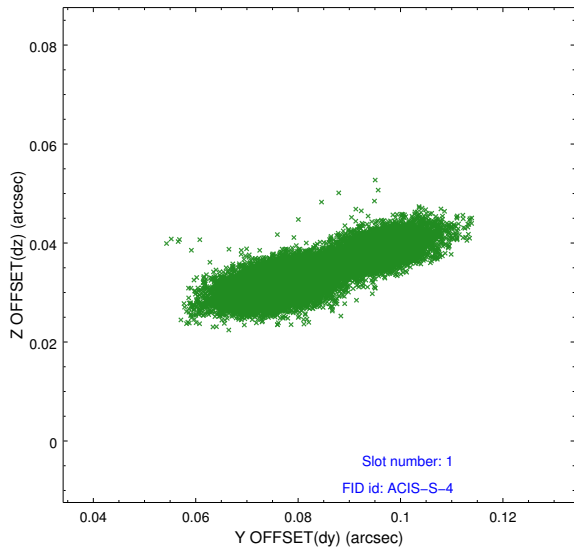


2.5 FID Slots

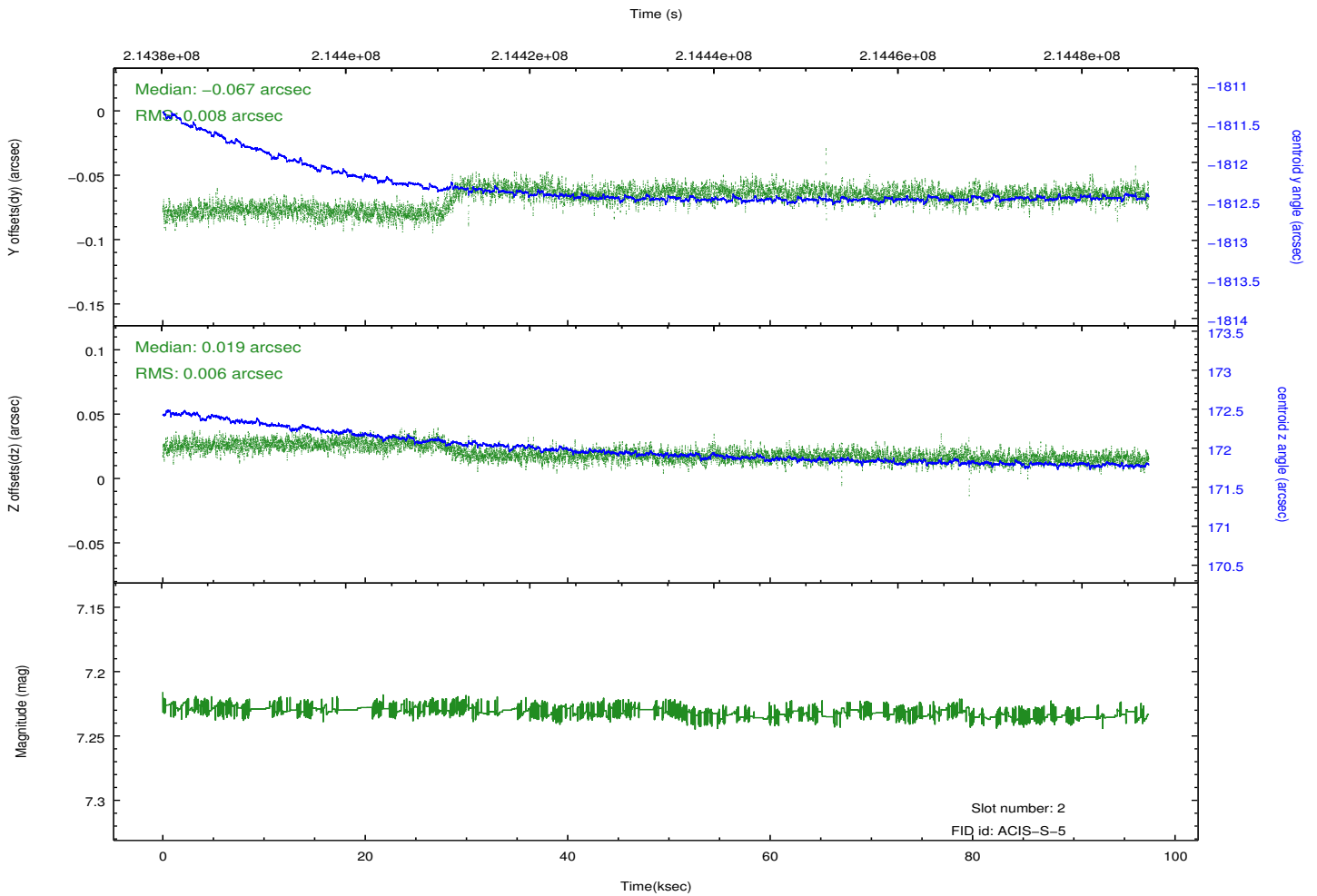
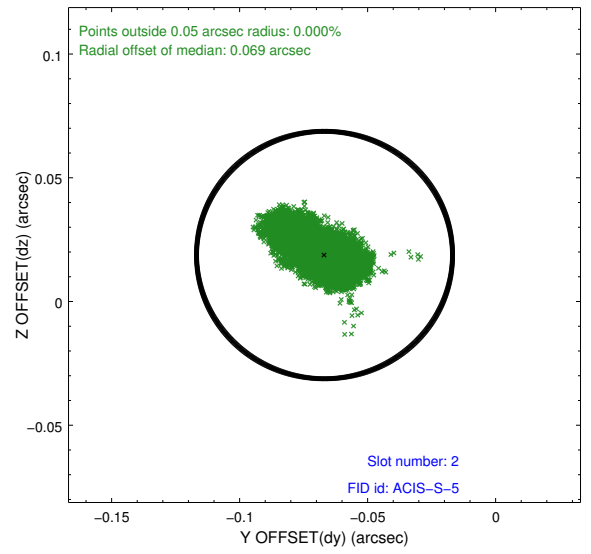
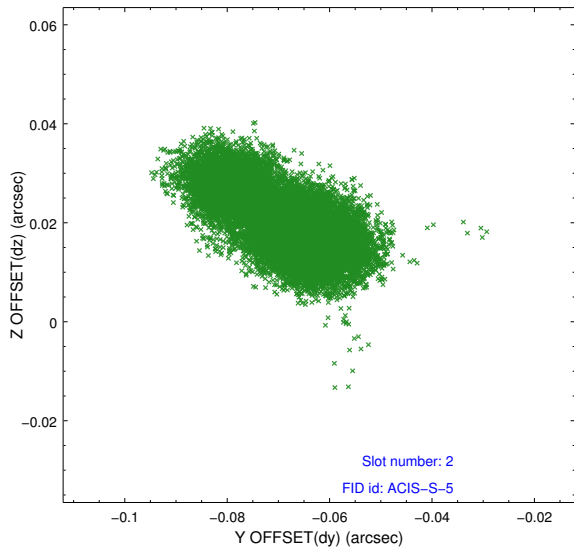
2.5.1 Slot 0



2.5.2 Slot 1



2.5.3 Slot 2



A Summary

A.1 Status

V&V Scientist	Jen Lauer
V&V Date (YYYY-MM-DD)	2013.01.02
V&V Edition	1
V&V Disposition and Status	OK
V&V Charge Time	97.392

A.2 Comments