

V&V Reference Report

L2 ASCDS Version : 10.2.4

Observation 52361 - L2 Version 1
Chandra X-Ray Center

L2 Processing Date : Oct 24 2014

Contents

1	Front	2
2	OBI	3
2.1	OBI	3
2.1.1	Images	3
2.1.2	Bias	3
2.1.3	Parameters	4
2.1.4	Events	4
2.2	Compared Parameters	5
2.3	Star Slots	6
2.4	FID Slots	6
A	Summary	7
A.1	Status	7
A.2	Comments	7

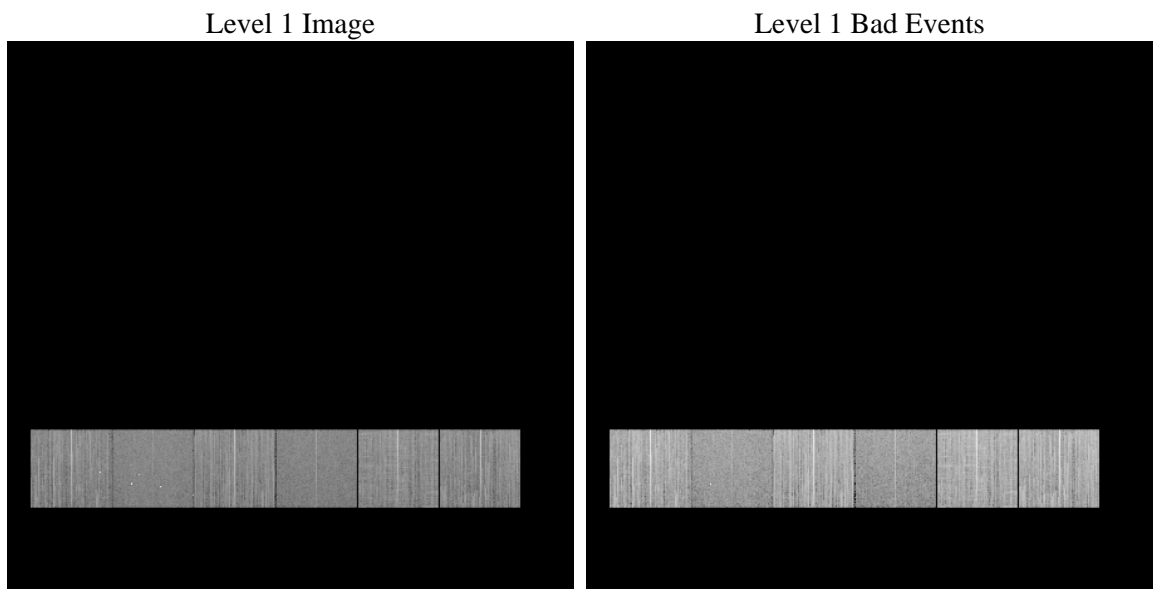
1 Front

seq_num	 	Sequence number
obs_id	52361	Observation id
title	ACIS-456789 diagnostics	Proposal title
observer	CHANDRA engineering request/realtime commanding	Principal investig
object	 	Source name
dtycle	0	
cycle	P	events from which exps? Prim/Second/Both
ra_targ	0.0	Observer's specified target RA [deg]
dec_targ	0.0	Observer's specified target Dec [deg]
ra_nom	45.784176341523	Nominal RA [deg]
dec_nom	-11.992890328264	Nominal Dec [deg]
roll_nom	36.743132539057	Nominal Roll [deg]
revision	1	Processing version of data
ontime	8169.5999696255	Sum of GTIs [s]
livetime	8066.1515756676	Livetime [s]
ontime4	8169.5999696255	Sum of GTIs [s]
ontime5	8169.5999696255	Sum of GTIs [s]
ontime6	8169.5999696255	Sum of GTIs [s]
ontime7	8169.5999696255	Sum of GTIs [s]
ontime8	8169.5999696255	Sum of GTIs [s]
ontime9	8169.5999696255	Sum of GTIs [s]
l2events	190534	Number of level 2 events

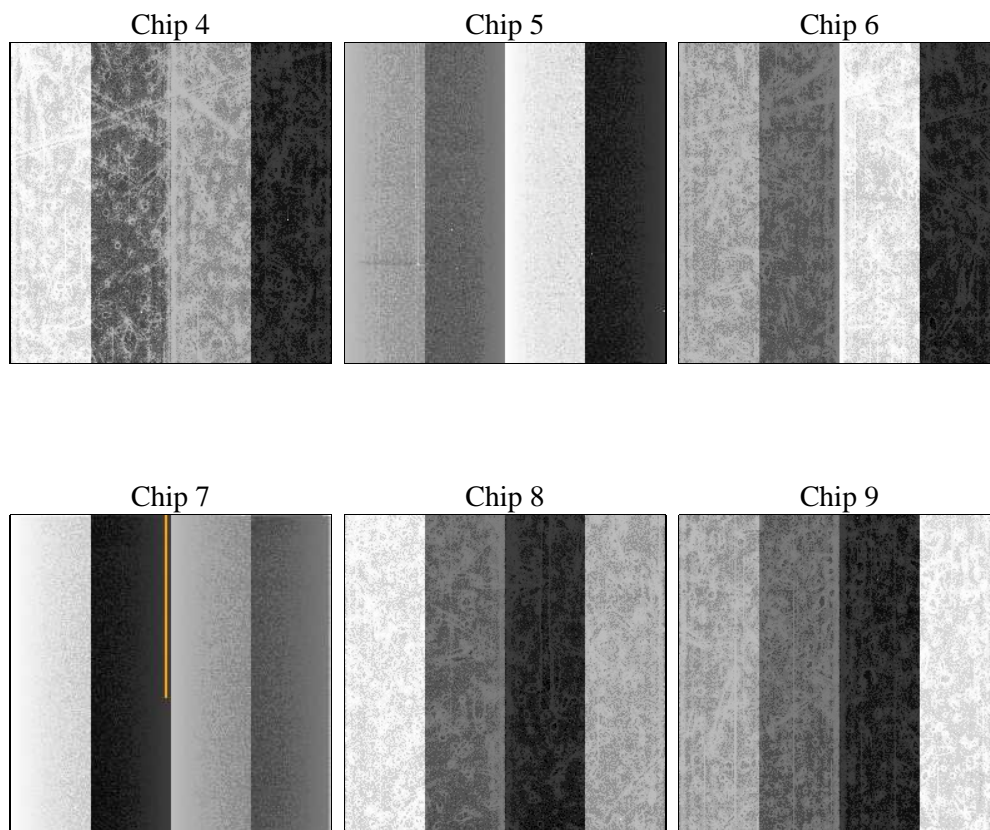
2 OBI

2.1 OBI

2.1.1 Images



2.1.2 Bias



2.1.3 Parameters

obi_num	0	Obi number	sched_exp_time	0.0	[s] Scheduled observation exposure time
ascdsver	10.2.4	Processing system revision	ontime	8169.5999696255	Sum of GTIs [s]
caldbver	4.6.3	 	ontime4	8169.5999696255	Sum of GTIs [s]
date	2014-10-24T17:22:29	Date and time of file creation	ontime5	8169.5999696255	Sum of GTIs [s]
revision	1	Processing version of data	ontime6	8169.5999696255	Sum of GTIs [s]
			ontime7	8169.5999696255	Sum of GTIs [s]
			ontime8	8169.5999696255	Sum of GTIs [s]
			ontime9	8169.5999696255	Sum of GTIs [s]
			l1events	906723	Number of level 1 events

2.1.4 Events

	ccd 4	ccd 5	ccd 6	ccd 7	ccd 8	ccd 9		ccd 4	ccd 5	ccd 6	ccd 7	ccd 8	ccd 9
level 1 events	154633	130118	160897	119348	172975	168752	grade 0 events	15444	7101	11198	6217	14630	11952
rejected events	127655	73827	136131	70149	139065	143851		9%	5%	6%	5%	8%	7%
rejected %	82%	56%	84%	58%	80%	85%	grade 1 events	116	705	46	76	83	66
								0%	0%	0%	0%	0%	0%
							grade 2 events	4826	19903	6050	12568	7625	5310
								3%	15%	3%	10%	4%	3%
							grade 3 events	1859	1618	1552	3741	2557	1733
								1%	1%	0%	3%	1%	1%
							grade 4 events	1742	1639	1533	3605	2571	1673
								1%	1%	0%	3%	1%	0%
							grade 5 events	3125	5607	2971	7092	3940	3452
								2%	4%	1%	5%	2%	2%
							grade 6 events	3460	26740	4766	23775	7013	4578
								2%	20%	2%	19%	4%	2%
							grade 7 events	124061	66805	132781	62274	134556	139988
								80%	51%	82%	52%	77%	82%

2.2 Compared Parameters

Parameter	Planned	Actual	Parameter	Planned	Actual
Instrument	ACIS	ACIS	Obspar format version number	7	7
Detector	ACIS-456789	ACIS-456789	Obspar file type	PREDICTED	ACTUAL
Grating	NONE	NONE	Obspar update status	OVERRIDE	OVERRIDE
Data mode	FAINT	FAINT	Number of optional ACIS chips dropped	0	0
Observation mode	SECONDARY	SECONDARY	On-chip summing requested	N	N
[deg] Pointing RA	0	45.78417634152289	Subarray requested	NONE	NONE
[deg] Pointing Dec	0	-11.99289032826387	Alternating exposures requested	N	N
[deg] Pointing Roll	0.0	36.74313253905687	[s] Primary exposure time	3.2	3.2
SIM focus pos (mm)	-1.4281808131	-1.4281808131			
[mm] SIM defocus	0.1051557500557434	0.1051557500557434			
SIM translation stage pos (mm)	250.4660330802	250.4660330802			
[mm] SIM translation stage offset	-0.01005726120527584	-0.01005726120527584			
[s] Observation start time (MET)	530513863.308463	530513863.308463			
Observation start date	2014-10-24T04:57:43	2014-10-24T04:57:43			
[s] Observation end time (MET)	530523411.762154	530523411.762154			
Observation end date	2014-10-24T07:36:52	2014-10-24T07:36:51			
Read mode	TIMED	TIMED			

2.3 Star Slots

2.4 FID Slots

A Summary

A.1 Status

V&V Scientist	Beth Sundheim
V&V Date (YYYY-MM-DD)	2014.10.24
V&V Edition	1
V&V Disposition and Status	OK
V&V Charge Time	8.1695999696255

A.2 Comments