

# V&V Reference Report

## L2 ASCDS Version : 8.5.1.1

Observation 5441 - L2 Version 3  
Chandra X-Ray Center

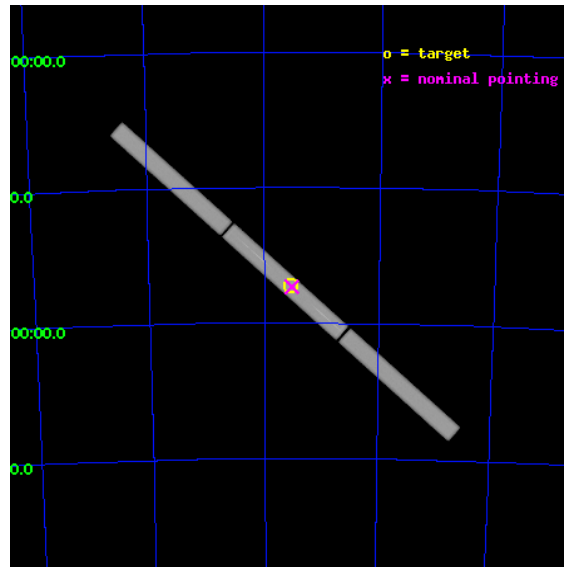
L2 Processing Date : Dec 22 2012

## Contents

<b>1</b>	<b>Front</b>	<b>2</b>
<b>2</b>	<b>OBI</b>	<b>3</b>
2.1	OBI . . . . .	3
2.1.1	Images . . . . .	3
2.1.2	Parameters . . . . .	4
2.1.3	Events . . . . .	4
2.2	Compared Parameters . . . . .	5
2.3	Aspect . . . . .	6
2.4	Star Slots . . . . .	9
2.4.1	Slot 3 . . . . .	9
2.4.2	Slot 4 . . . . .	10
2.4.3	Slot 5 . . . . .	11
2.4.4	Slot 6 . . . . .	12
2.4.5	Slot 7 . . . . .	13
2.5	FID Slots . . . . .	14
2.5.1	Slot 0 . . . . .	14
2.5.2	Slot 1 . . . . .	15
2.5.3	Slot 2 . . . . .	16
<b>3</b>	<b>Gratings</b>	<b>17</b>
3.1	LETG Arm . . . . .	17
<b>A</b>	<b>Summary</b>	<b>19</b>
A.1	Status . . . . .	19
A.2	Comments . . . . .	19

# 1 Front

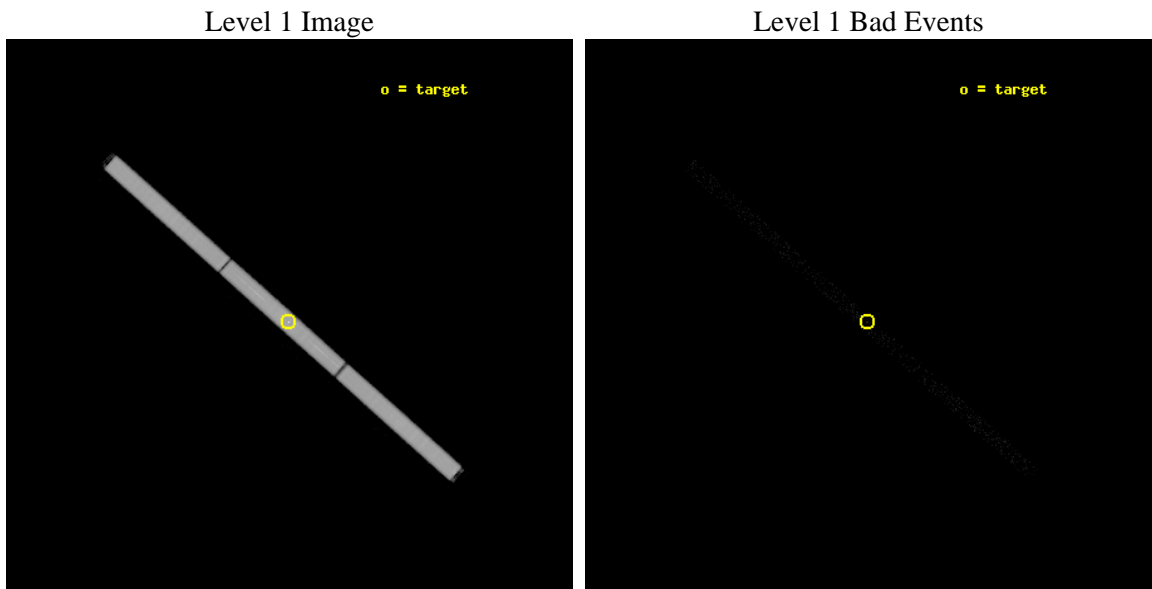
seq_num	300157	Sequence number
obs_id	5441	Observation id
title	Testing Accretion Scenarios at the Eddington Limit	Proposal title
observer	Dr. Vadim Burwitz	Principal investigator
object	RXJ0513.9-6951	Source name
ra_targ	78.461667	Observer's specified target RA [deg]
dec_targ	-69.863056	Observer's specified target Dec [deg]
ra_nom	78.451156016188	Nominal RA [deg]
dec_nom	-69.866085029406	Nominal Dec [deg]
roll_nom	221.63776801445	Nominal Roll [deg]
revision	3	Processing version of data
ontime	25185.532386154	[s]
livetime	25001.083666152	Ontime multiplied by DTCOR
l2events	1496015	Number of level 2 events



## 2 OBI

### 2.1 OBI

#### 2.1.1 Images



## 2.1.2 Parameters

obi_num	0	Obi number	sched_exp_time	25000.000000	[s] Scheduled observation exposure time
ascdsver	8.5.1.1	Processing system revision	ontime	25185.532396138	[s]
caldsver	4.5.5	&#160	l1events	2103237	Number of level 1 events
date	2012-12-22T16:26:41	Date and time of file creation			
revision	3	Processing version of data			

## 2.1.3 Events

### Level 1 Events

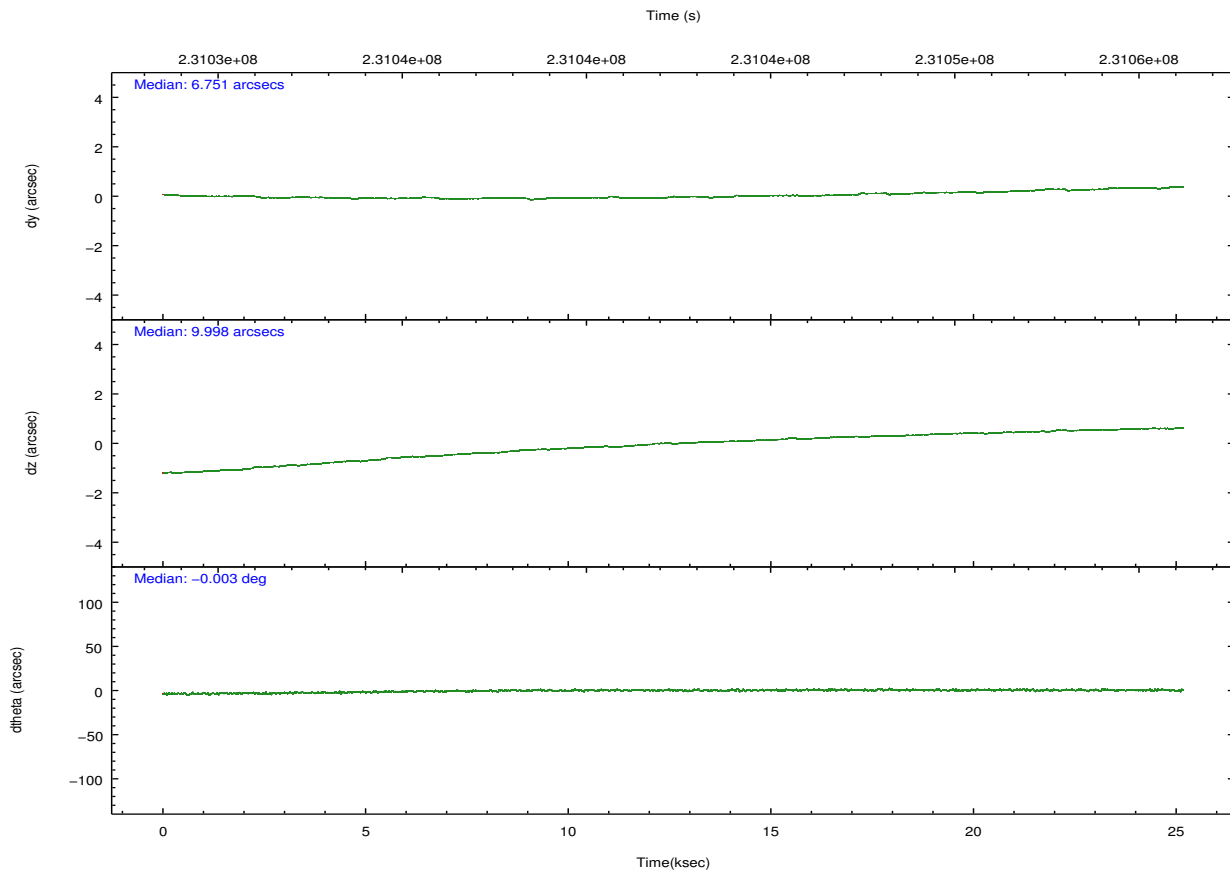
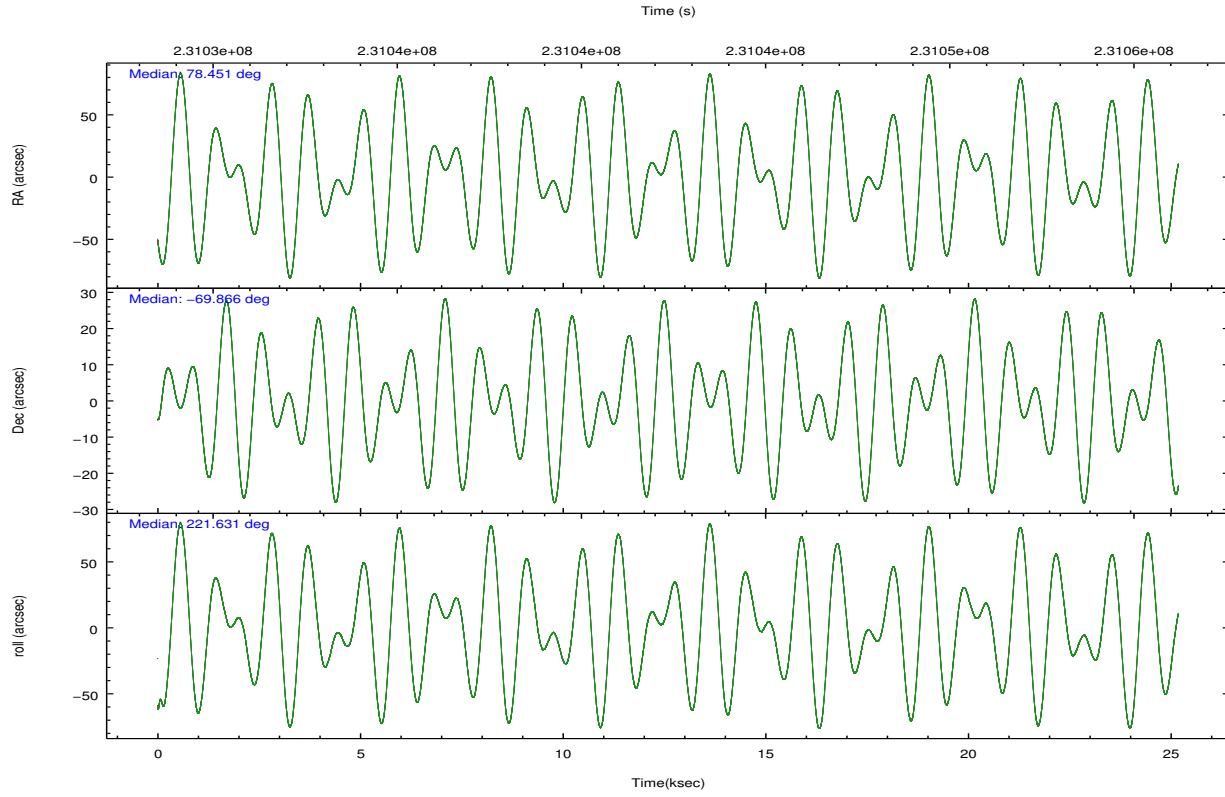
	<b>segment 1</b>	<b>segment 2</b>	<b>segment 3</b>
level 1 events	697845	706529	698863
rejected events	24793	23334	24250
rejected %	3%	3%	3%

## 2.2 Compared Parameters

Parameter	Planned	Actual
Instrument	HRC	HRC
Detector	HRC-S	HRC-S
Grating	LETG	LETG
Data mode	OBSERVING	OBSERVING
Observation mode	POINTING	POINTING
[deg] Pointing RA	78.473445	78.4511560161878
[deg] Pointing Dec	-69.838503	-69.86608502940611
[deg] Pointing Roll	221.591371	221.6377680144457
[mm] SIM focus pos	-1.429586	-1.428180813131781
[mm] SIM defocus	0.1037507710433287	0.1051558262725154
[mm] SIM translation stage pos	250.455976	250.4635187648994
[mm] SIM translation stage offset	0	-0.007540371344731511
[s] Observation start time (MET)	231029942.184000	231028923.0696
Observation start date	2005-04-27T22:57:58	2005-04-27T22:42:03
[s] Observation end time (MET)	231054942.184000	231055416.7583
Observation end date	2005-04-28T05:54:38	2005-04-28T06:03:36

Parameter	Planned	Actual
Obspar format version number	7	7
Obspar file type	PREDICTED	ACTUAL
Obspar update status	NONE	UPDATED

## 2.3 Aspect

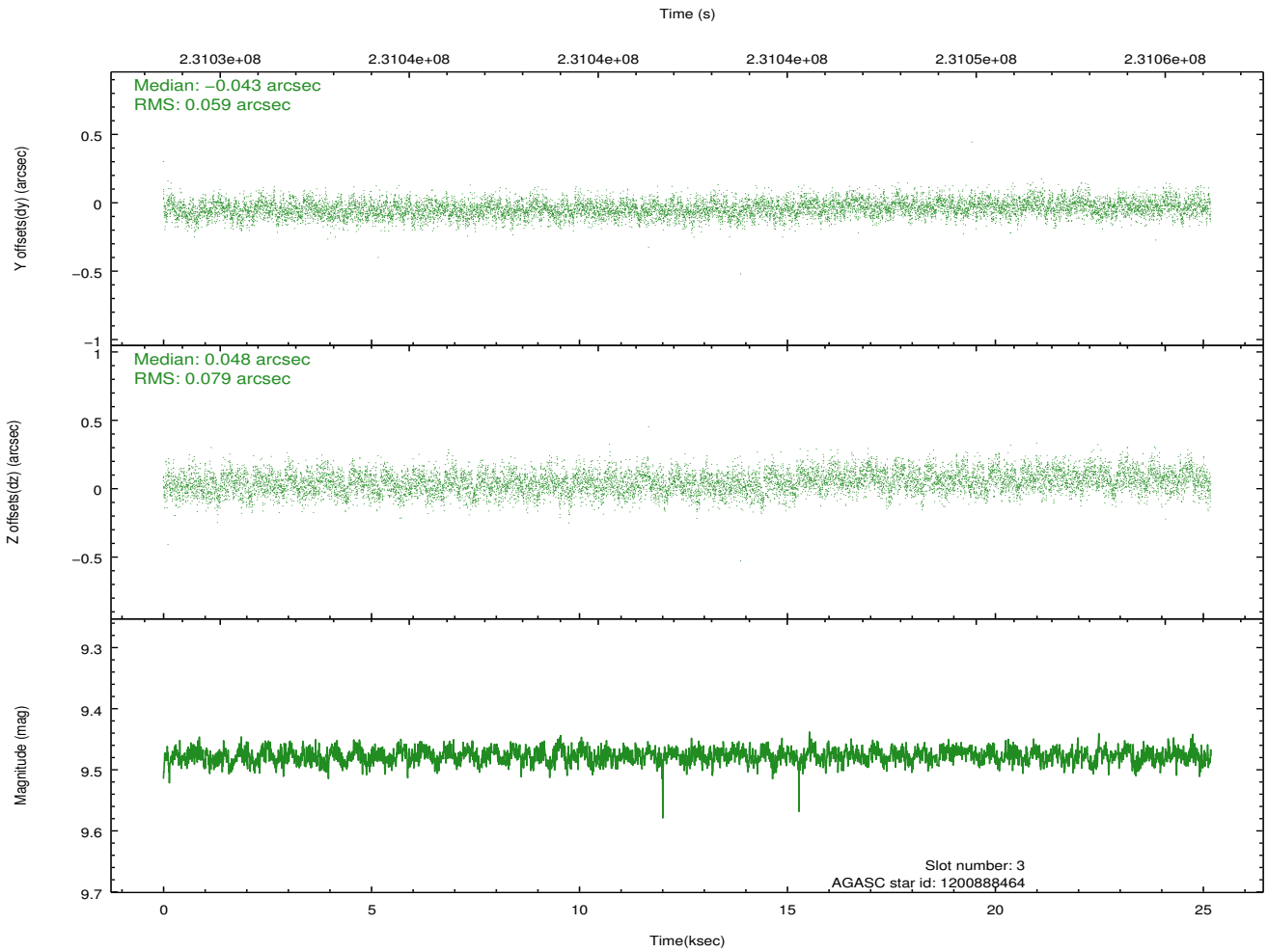
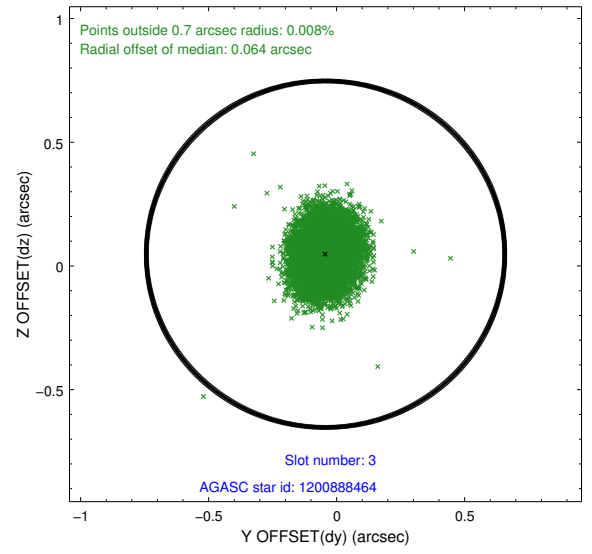
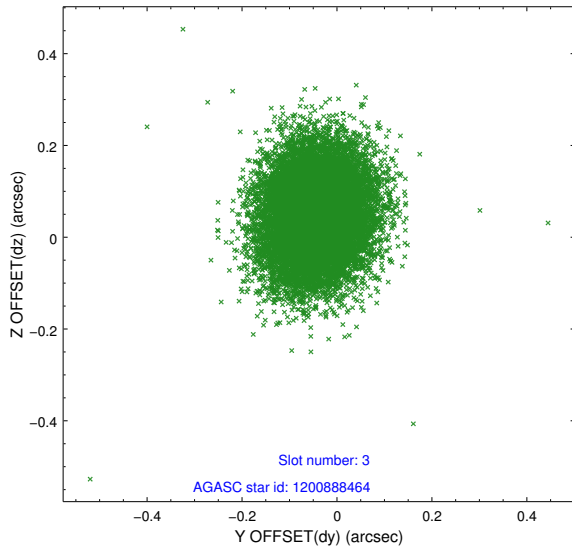


### Slot Statistics

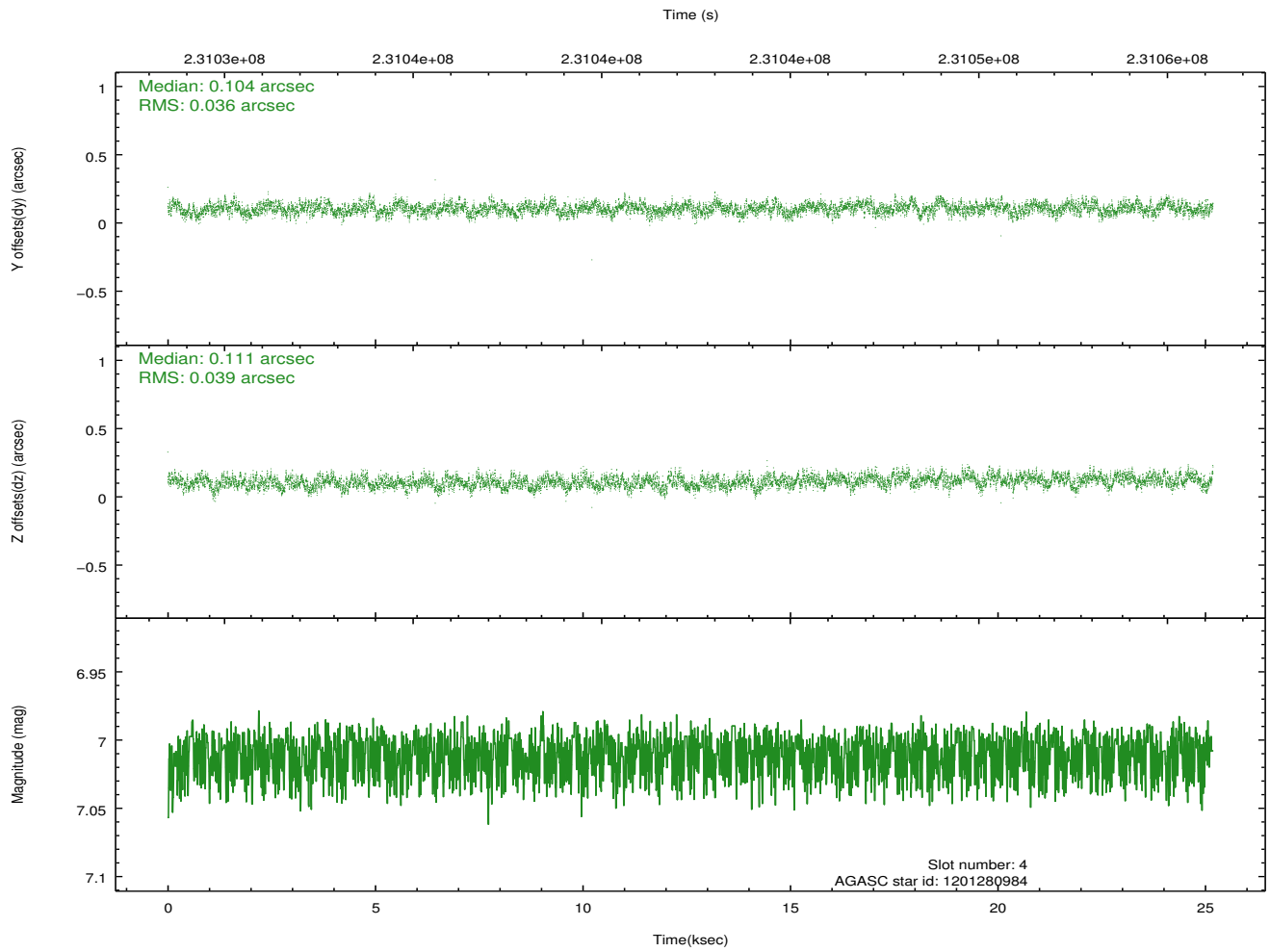
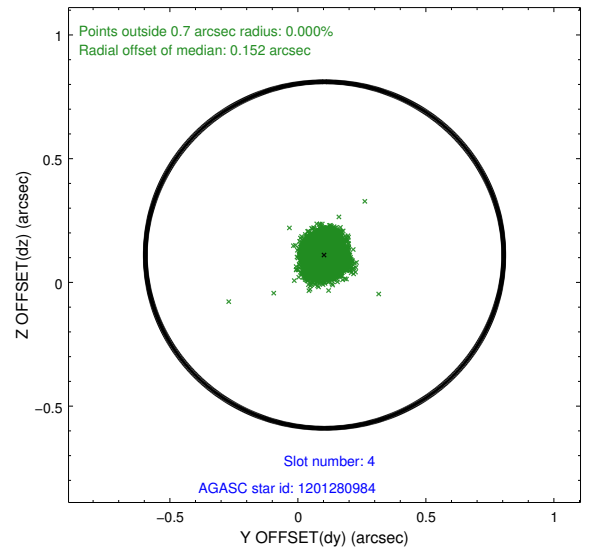
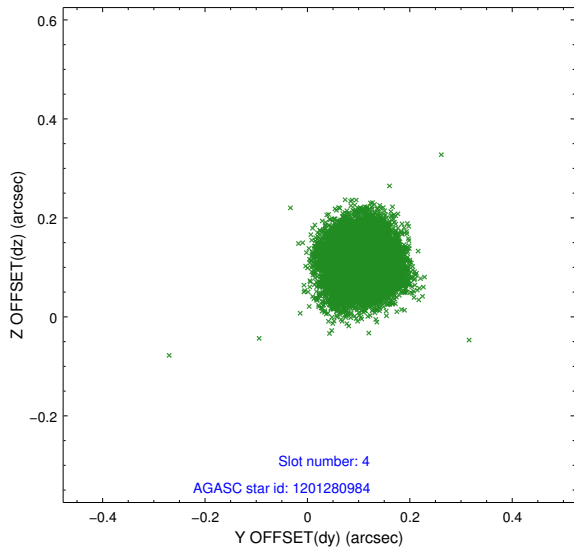
slot	status	id	mag	n_pts	med_dy	med_dz	dr1	dr2	ra	dec	mean_y	mean_z
0	FID	HRC-S-1	7.00	6143	0.110	-0.184	0.012	0.032	0.000000	0.000000	-1160.96	-458.51
1	FID	HRC-S-2	7.00	6144	0.178	-0.112	0.007	0.013	0.000000	0.000000	1238.60	-451.19
2	FID	HRC-S-3	7.02	6144	0.102	-0.005	0.011	0.033	0.000000	0.000000	-1163.48	571.12
3	GUIDE	1200888464	9.48	12283	-0.043	0.048	0.105	0.169	78.430687	-69.005633	-1948.83	-2279.19
4	GUIDE	1201280984	7.01	12287	0.104	0.111	0.058	0.090	77.867422	-69.546090	-125.89	-1290.55
5	GUIDE	1201407648	9.15	12265	0.096	0.041	0.096	0.157	78.636737	-70.585025	1638.05	2140.06
6	GUIDE	1201409432	9.03	12283	-0.180	-0.168	0.090	0.142	79.317334	-70.259796	243.94	1820.87
7	GUIDE	1201411776	8.86	12275	0.024	-0.031	0.095	0.148	79.010603	-70.456328	994.28	2095.23

## 2.4 Star Slots

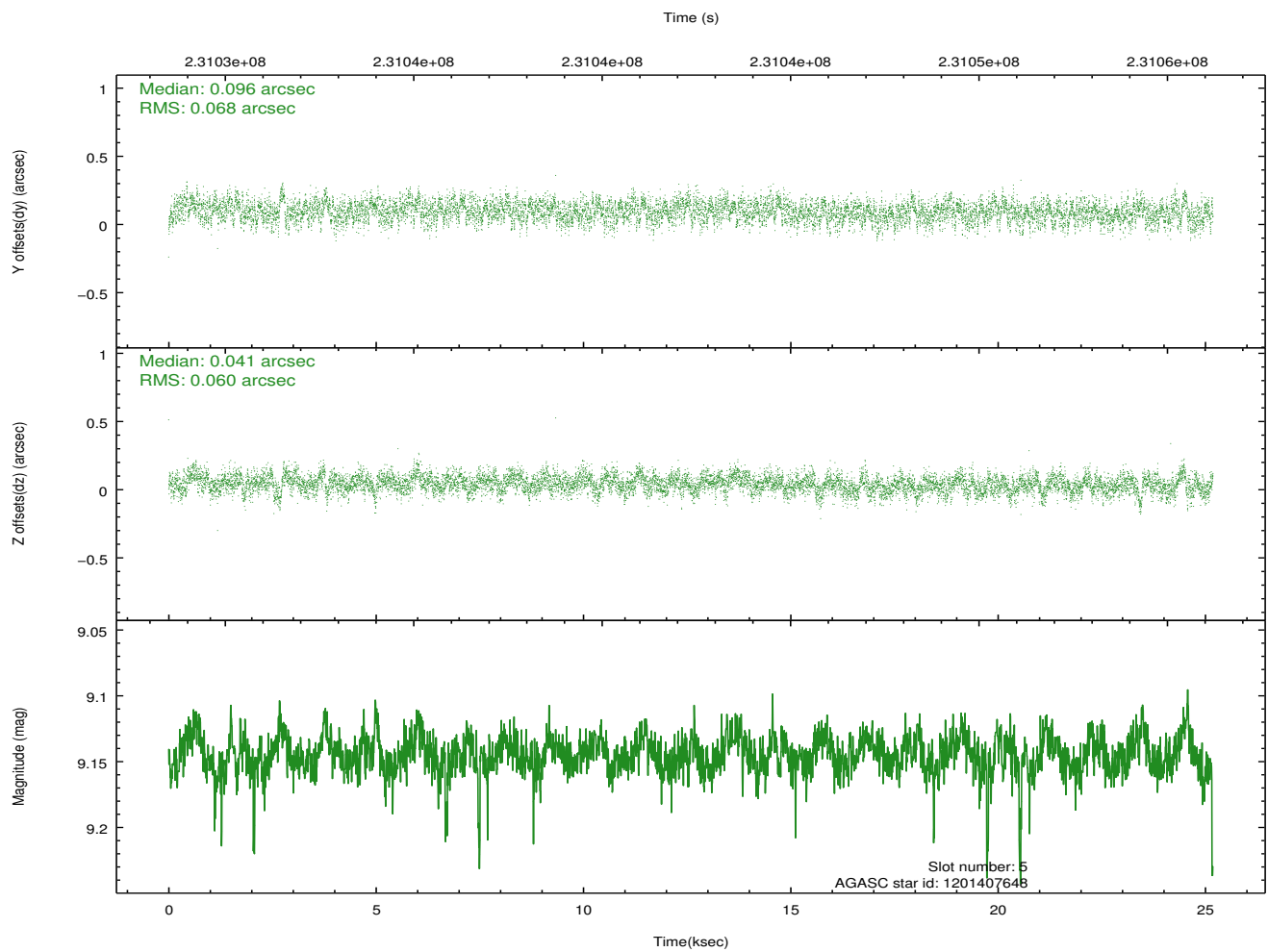
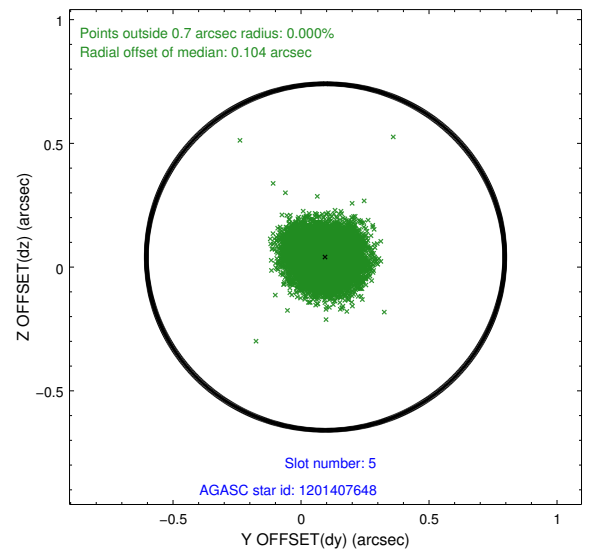
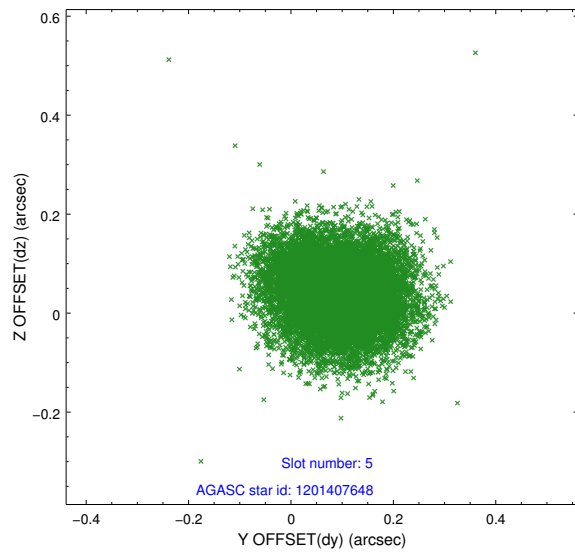
### 2.4.1 Slot 3



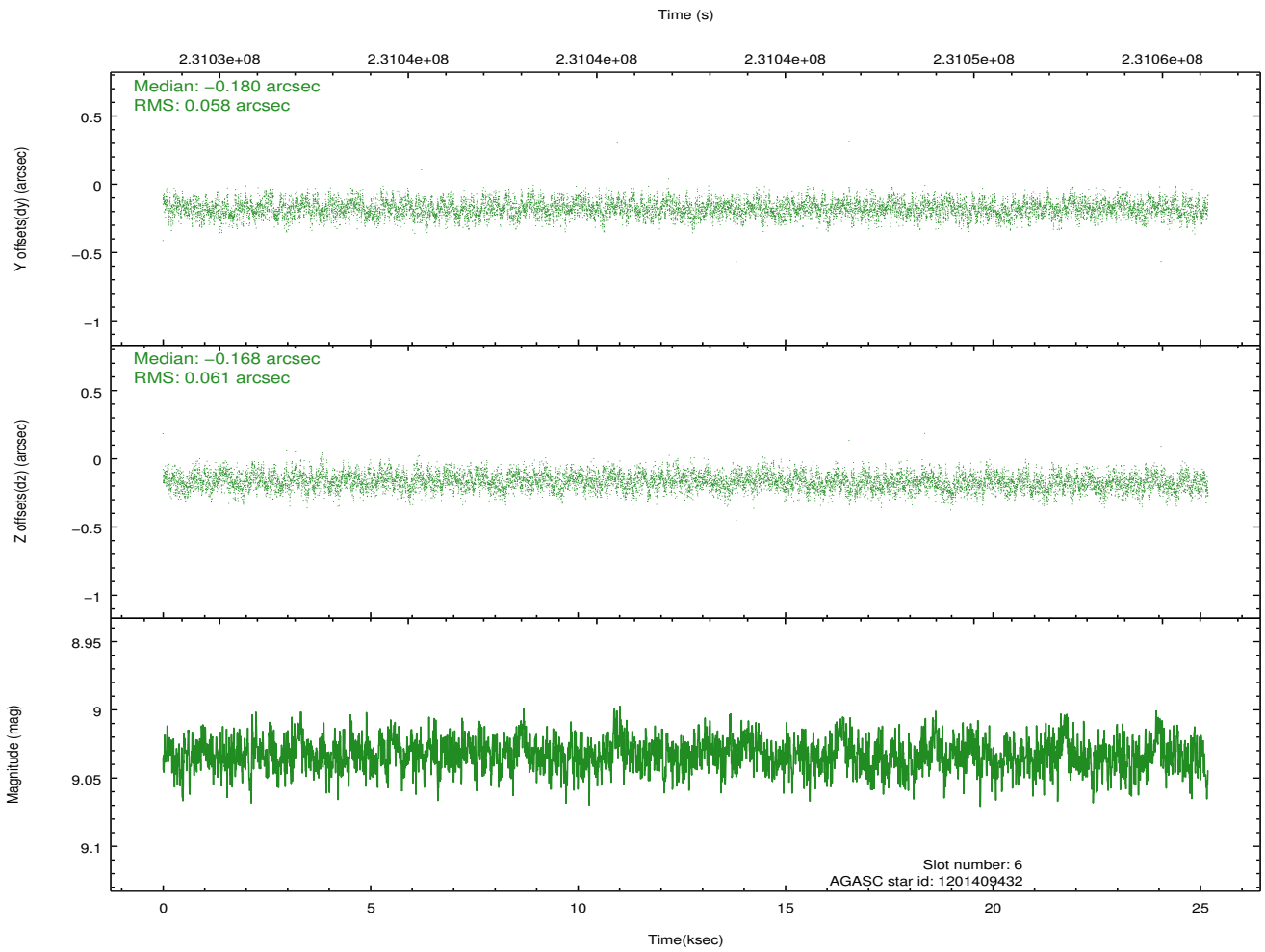
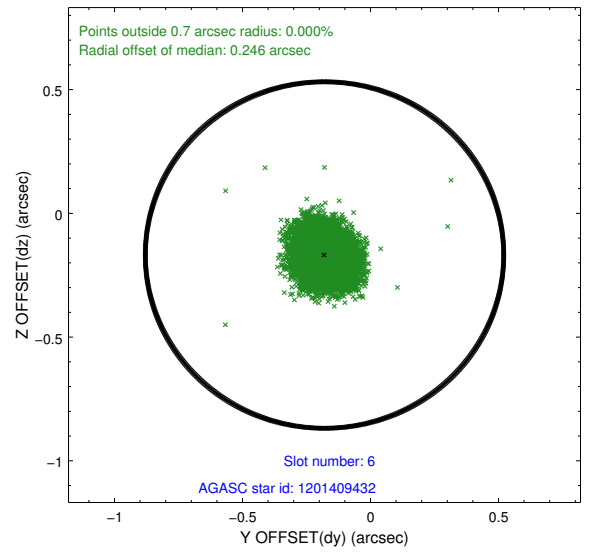
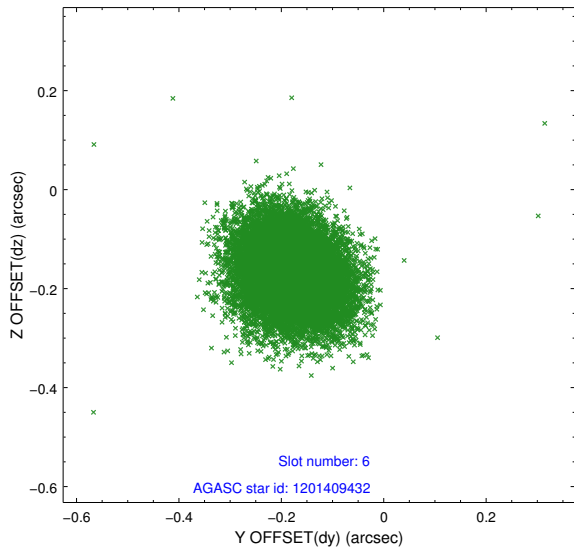
### 2.4.2 Slot 4



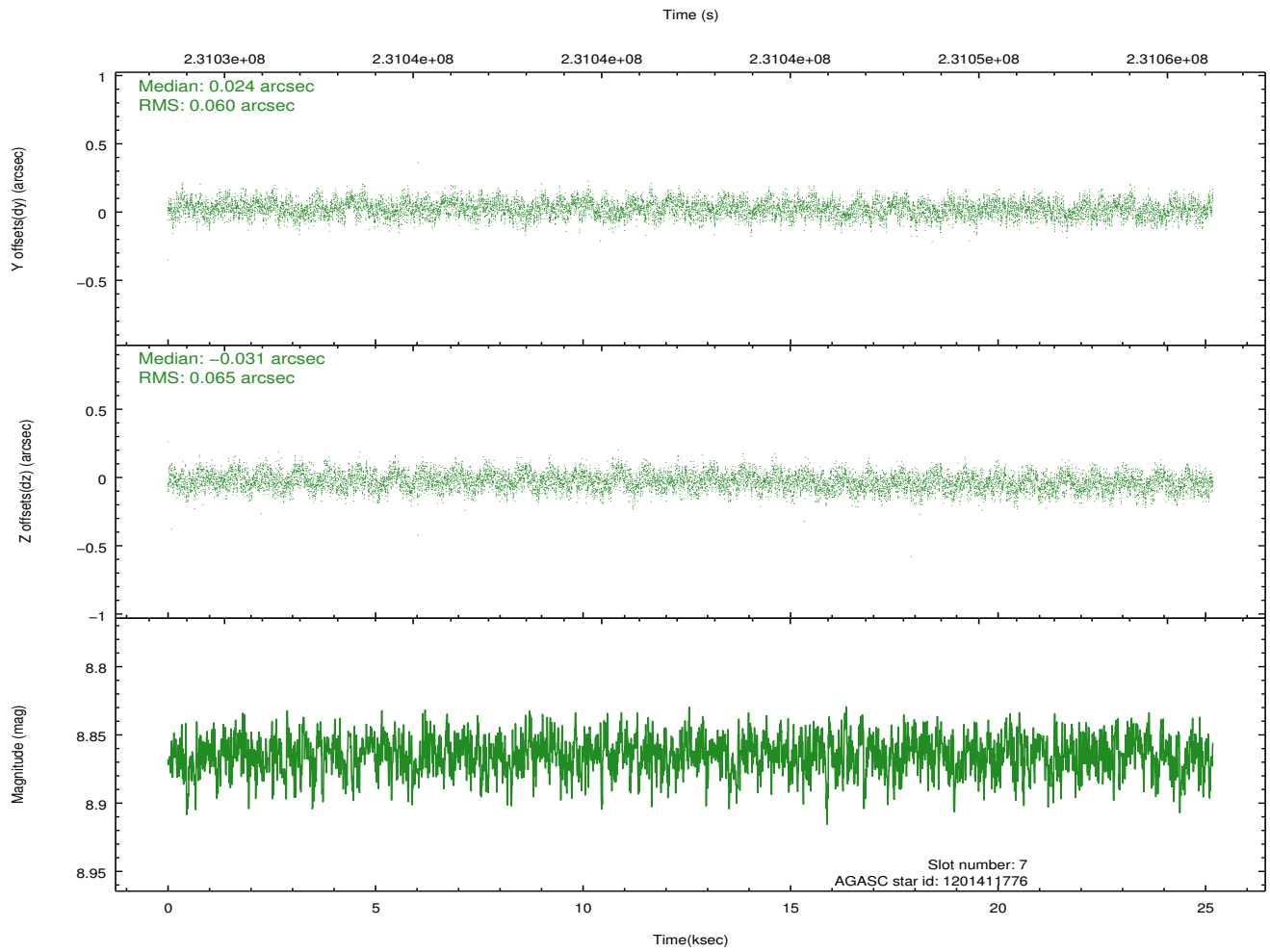
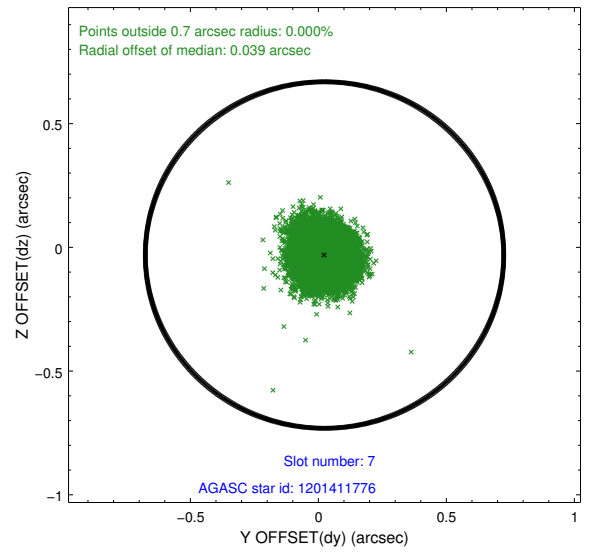
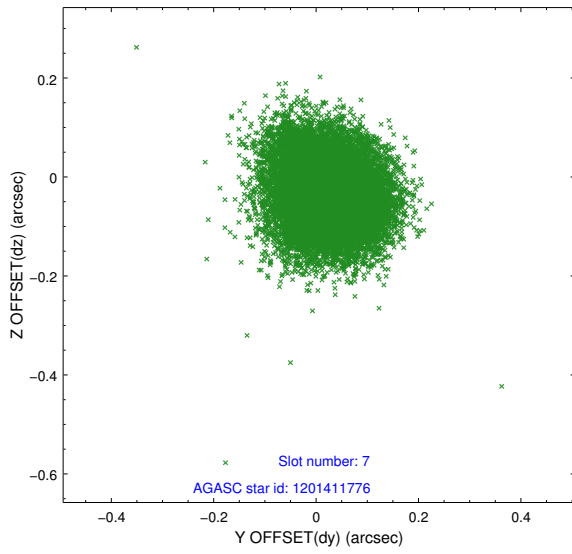
### 2.4.3 Slot 5



## 2.4.4 Slot 6

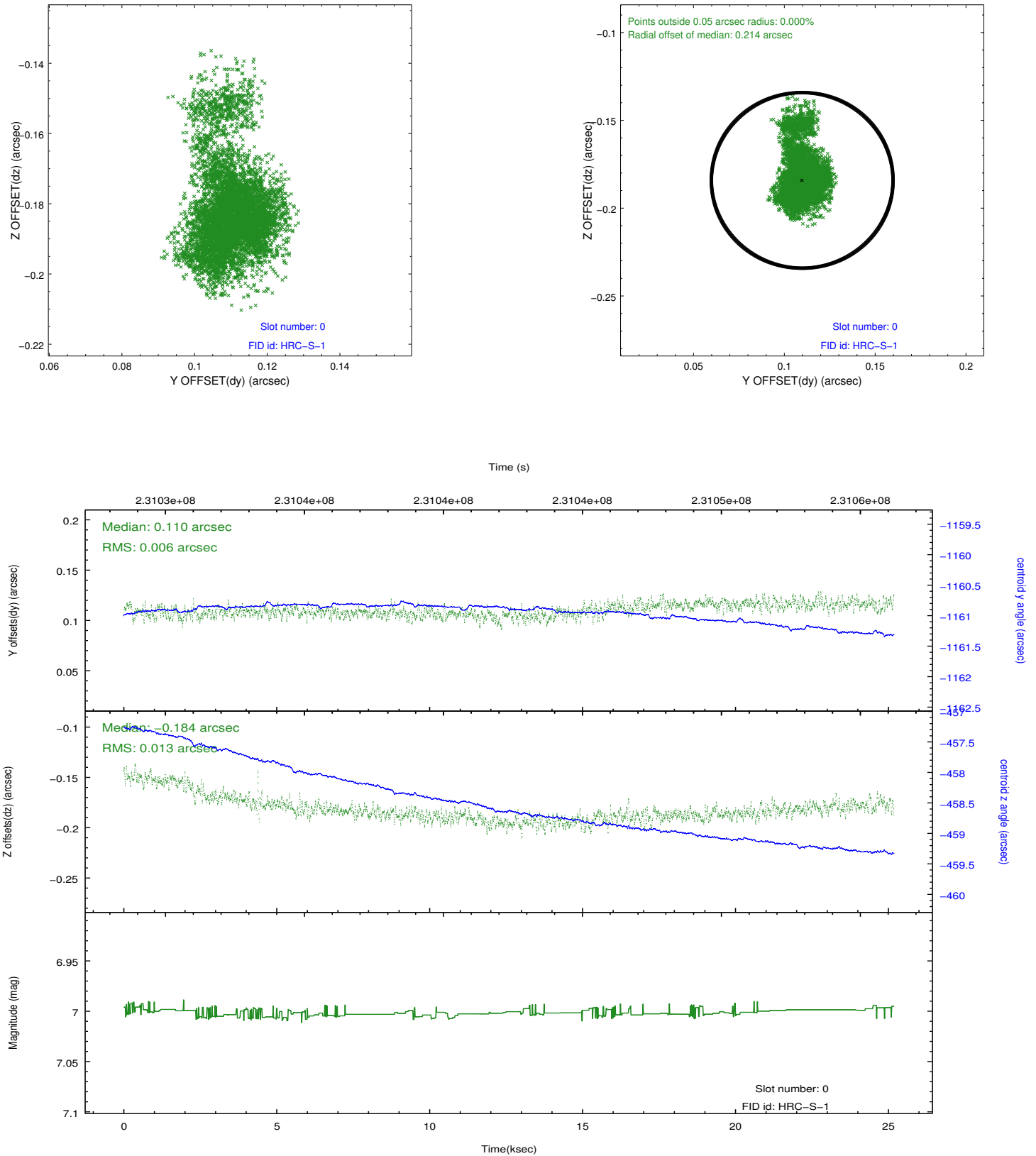


### 2.4.5 Slot 7

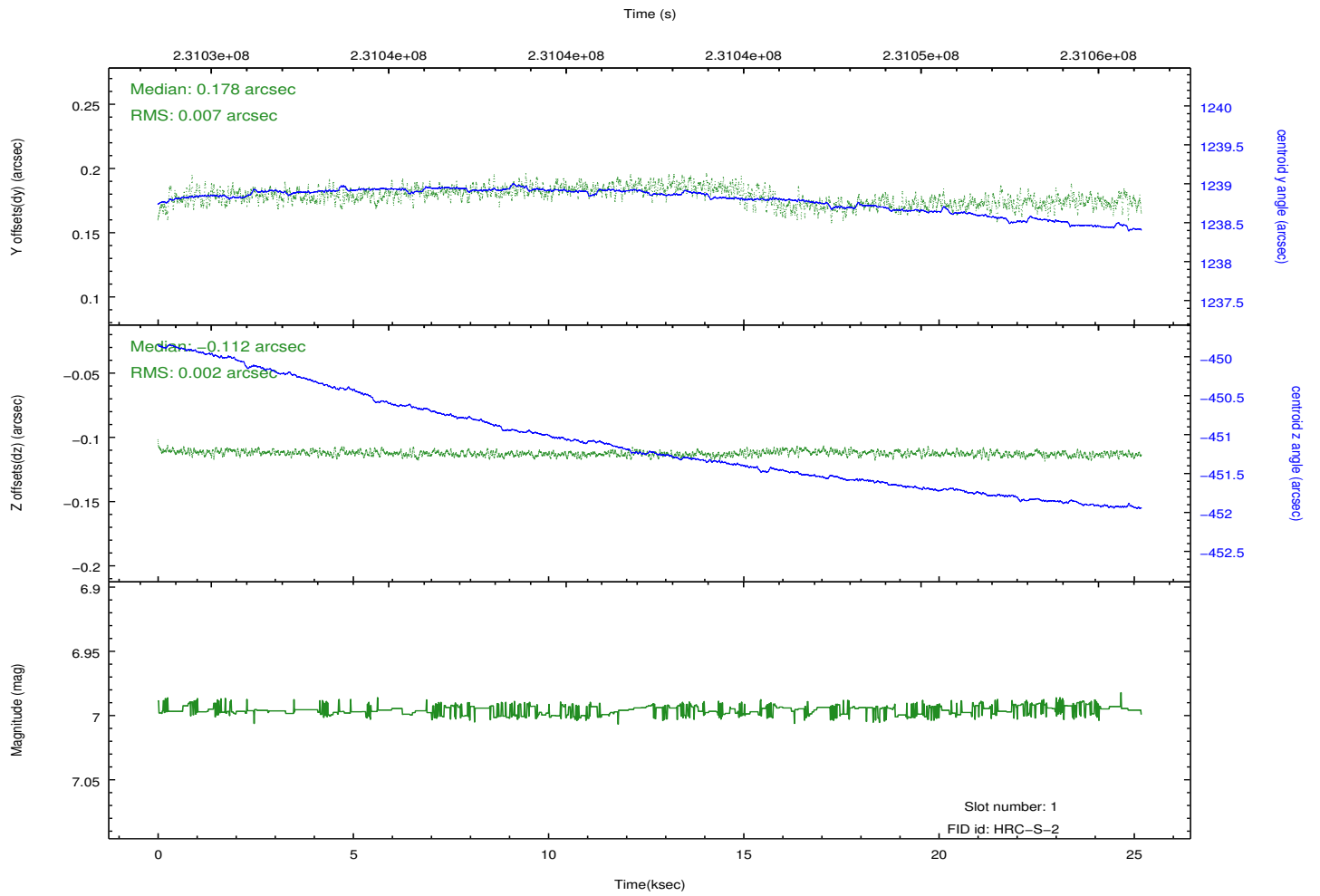
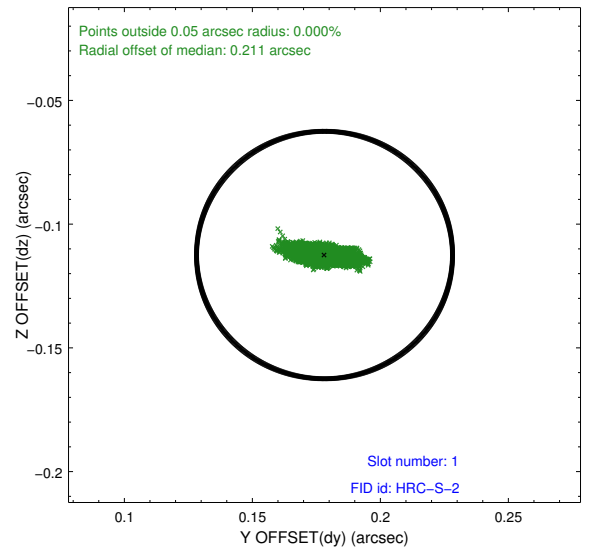
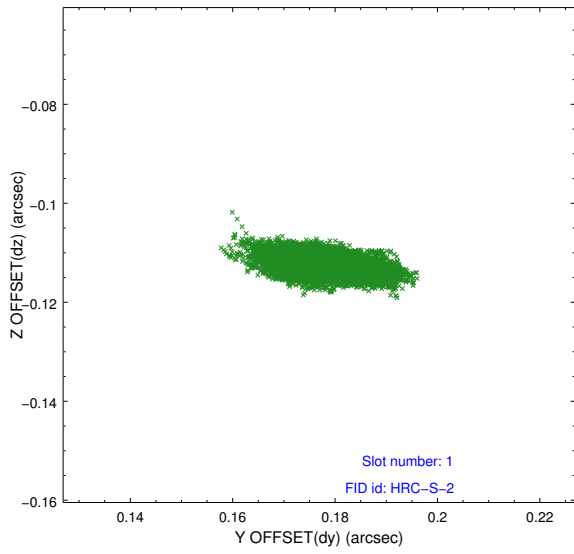


## 2.5 FID Slots

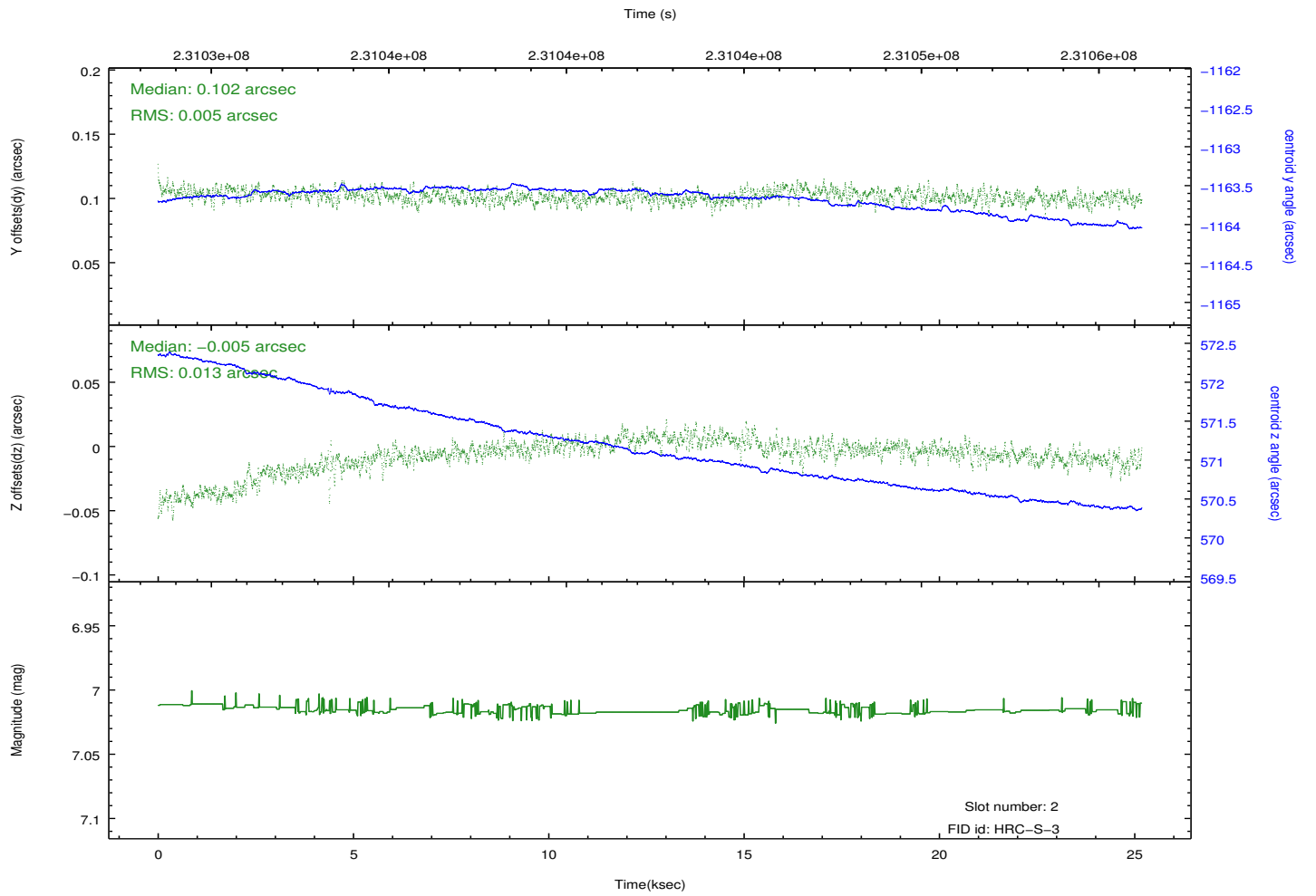
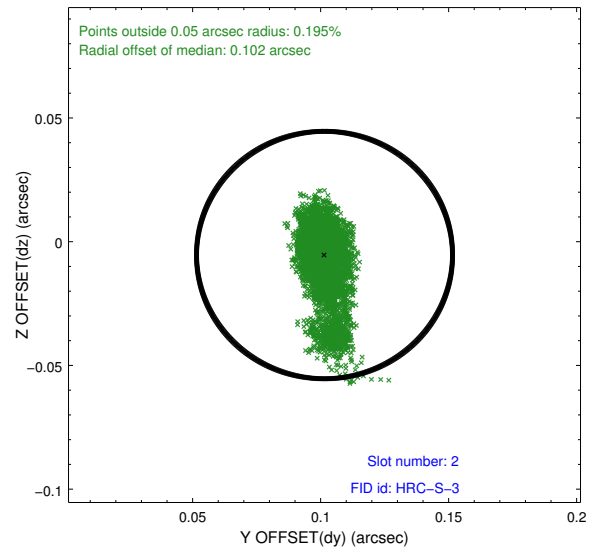
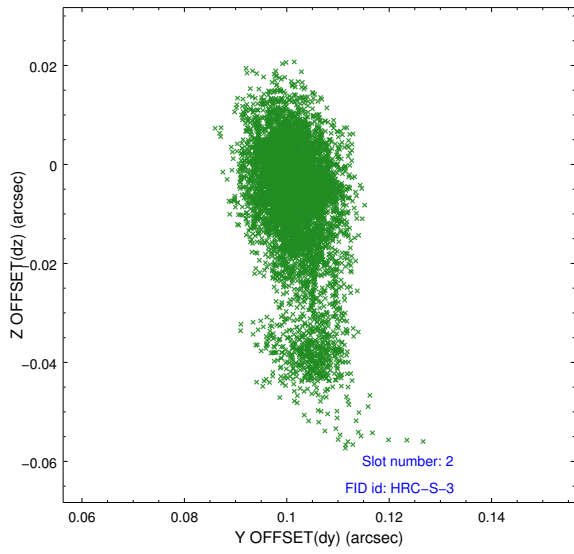
### 2.5.1 Slot 0



## 2.5.2 Slot 1

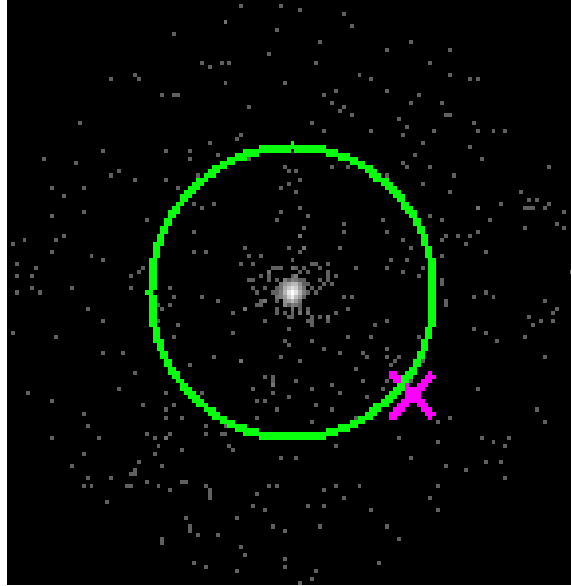


### 2.5.3 Slot 2



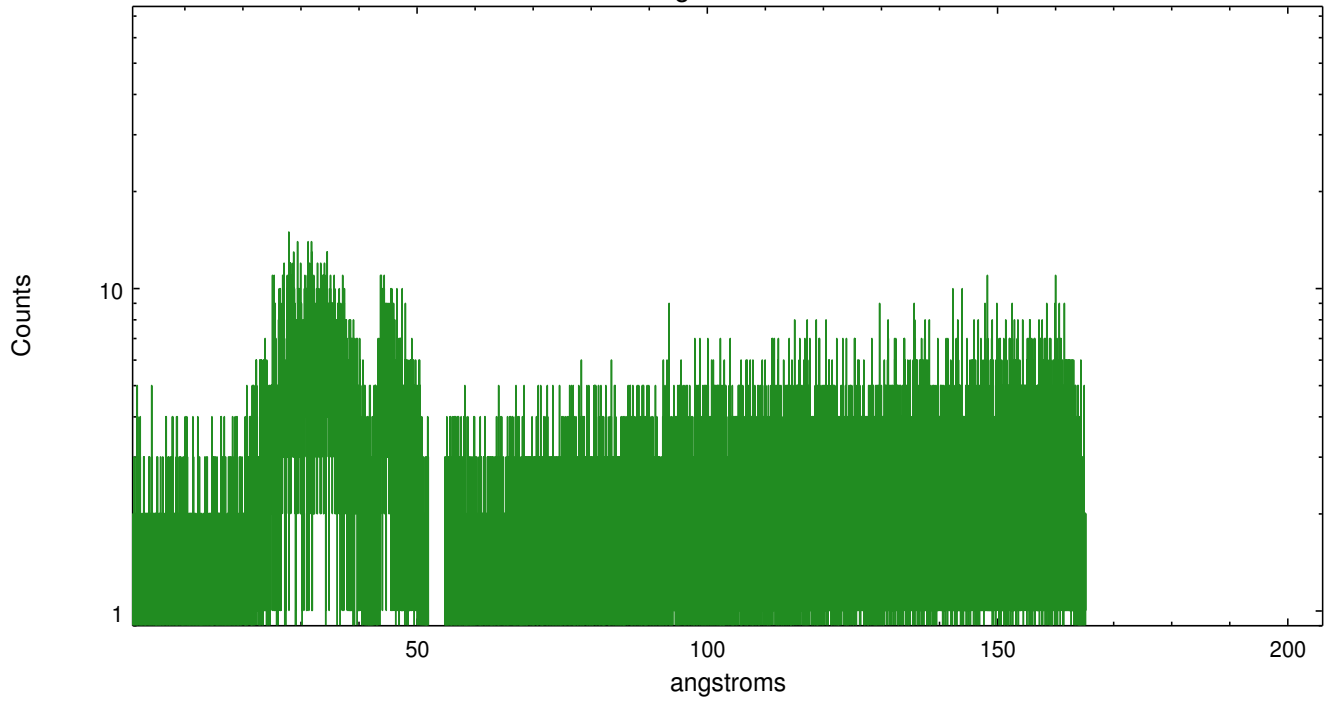
## 3 Gratings

### 3.1 LETG Arm

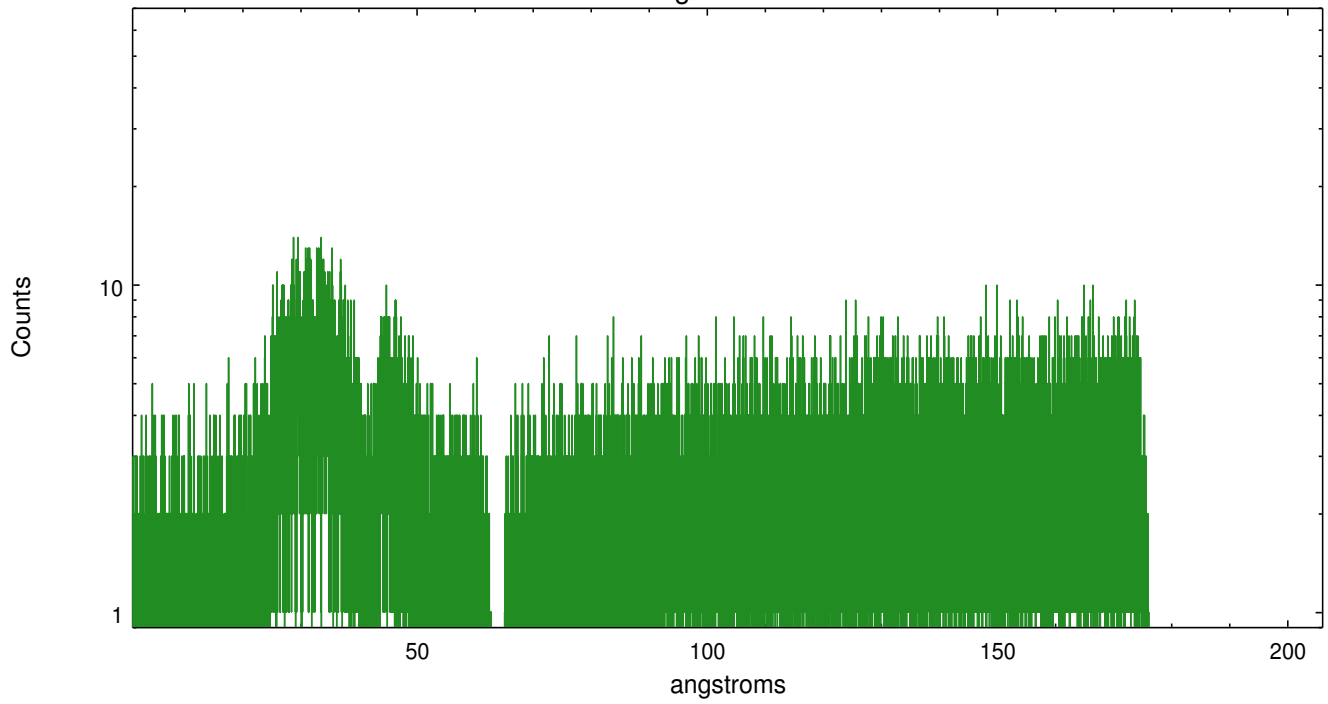


LETG Zero Order

leg order -1



leg order +1



# A Summary

## A.1 Status

V&V Scientist	Joy Nichols
V&V Date (YYYY-MM-DD)	2013.01.16
V&V Edition	1
V&V Disposition and Status	OK
V&V Charge Time	25.18553

## A.2 Comments