

V&V Reference Report

L2 ASCDS Version : 8.5.1.1

Observation 5511 - L2 Version 3
Chandra X-Ray Center

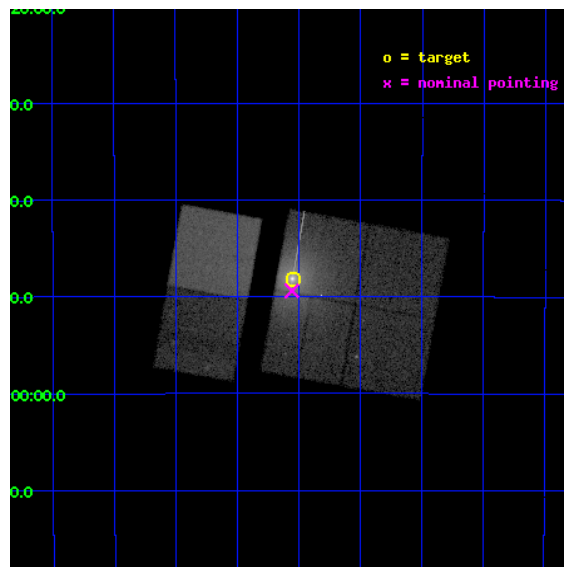
L2 Processing Date : Dec 26 2012

Contents

1	Front	2
2	OBI	3
2.1	OBI	3
2.1.1	Images	3
2.1.2	Bias	3
2.1.3	Parameters	4
2.1.4	Events	4
2.2	Compared Parameters	5
2.3	Aspect	6
2.4	Star Slots	9
2.4.1	Slot 3	9
2.4.2	Slot 4	10
2.4.3	Slot 5	11
2.4.4	Slot 6	12
2.4.5	Slot 7	13
2.5	FID Slots	14
2.5.1	Slot 0	14
2.5.2	Slot 1	15
2.5.3	Slot 2	16
A	Summary	17
A.1	Status	17
A.2	Comments	17

1 Front

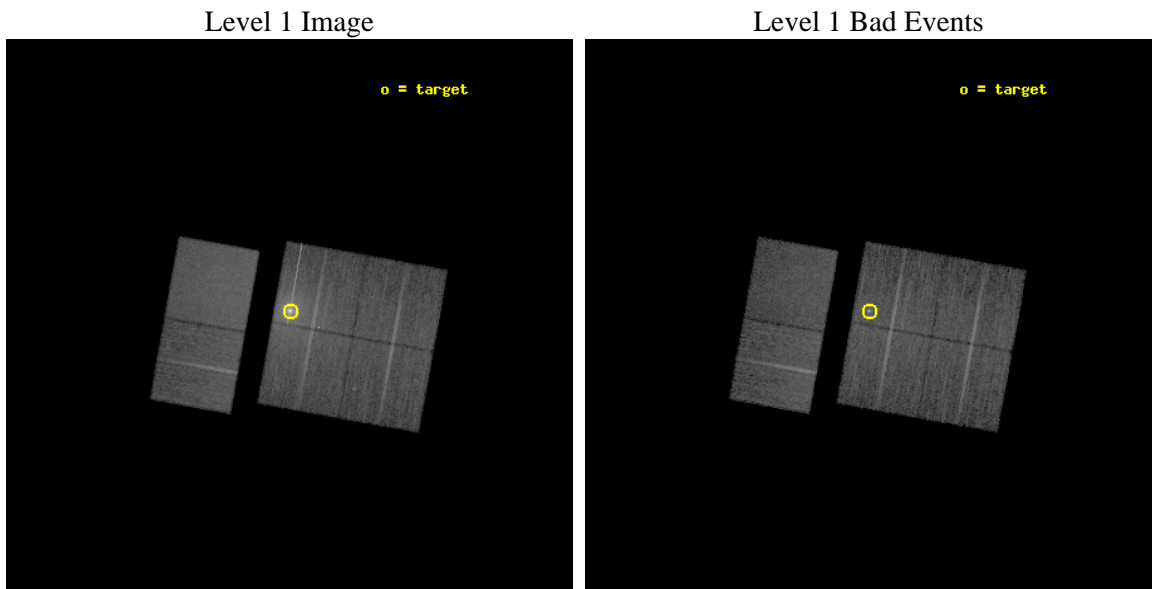
seq_num	400441	Sequence number
obs_id	5511	Observation id
title	Measuring Dense Clouds with X-rays and Millimeter Waves	Proposal t
observer	Dr. Randall Smith	Principal investigator
object	X1724-307	Source name
dtycycle	0	
cycle	P	events from which exps? Prim/Second/Both
ra_targ	261.887083	Observer's specified target RA [deg]
dec_targ	-30.8024	Observer's specified target Dec [deg]
ra_nom	261.88930709381	Nominal RA [deg]
dec_nom	-30.823332639214	Nominal Dec [deg]
roll_nom	280.2098301894	Nominal Roll [deg]
revision	3	Processing version of data
ontime	14754.282266587	Sum of GTIs [s]
livetime	14567.454660565	Livetime [s]
ontime0	14754.159146607	Sum of GTIs [s]
ontime1	14754.20018658	Sum of GTIs [s]
ontime2	14754.241226584	Sum of GTIs [s]
ontime3	14754.282266587	Sum of GTIs [s]
ontime6	14754.364346594	Sum of GTIs [s]
ontime7	14754.32330659	Sum of GTIs [s]
l2events	233564	Number of level 2 events



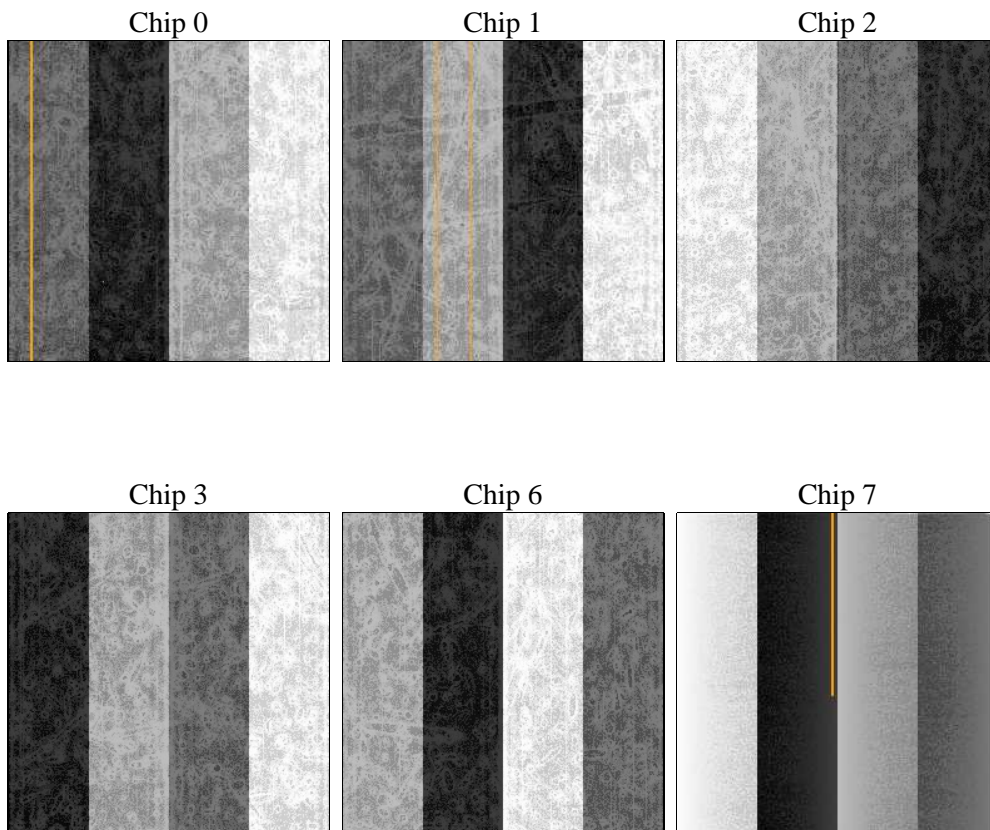
2 OBI

2.1 OBI

2.1.1 Images



2.1.2 Bias



2.1.3 Parameters

obi_num	1	Obi number	sched_exp_time	15000.000000	[s] Scheduled observation exposure time
ascdsver	8.5.1.1	Processing system revision	ontime	14754.282266587	Sum of GTIs [s]
caldsver	4.5.5	 	ontime0	14754.159146607	Sum of GTIs [s]
date	2012-12-26T13:15:41	Date and time of file creation	ontime1	14754.20018658	Sum of GTIs [s]
revision	3	Processing version of data	ontime2	14754.241226584	Sum of GTIs [s]
			ontime3	14754.282266587	Sum of GTIs [s]
			ontime6	14754.364346594	Sum of GTIs [s]
			ontime7	14754.32330659	Sum of GTIs [s]
			l1events	790199	Number of level 1 events

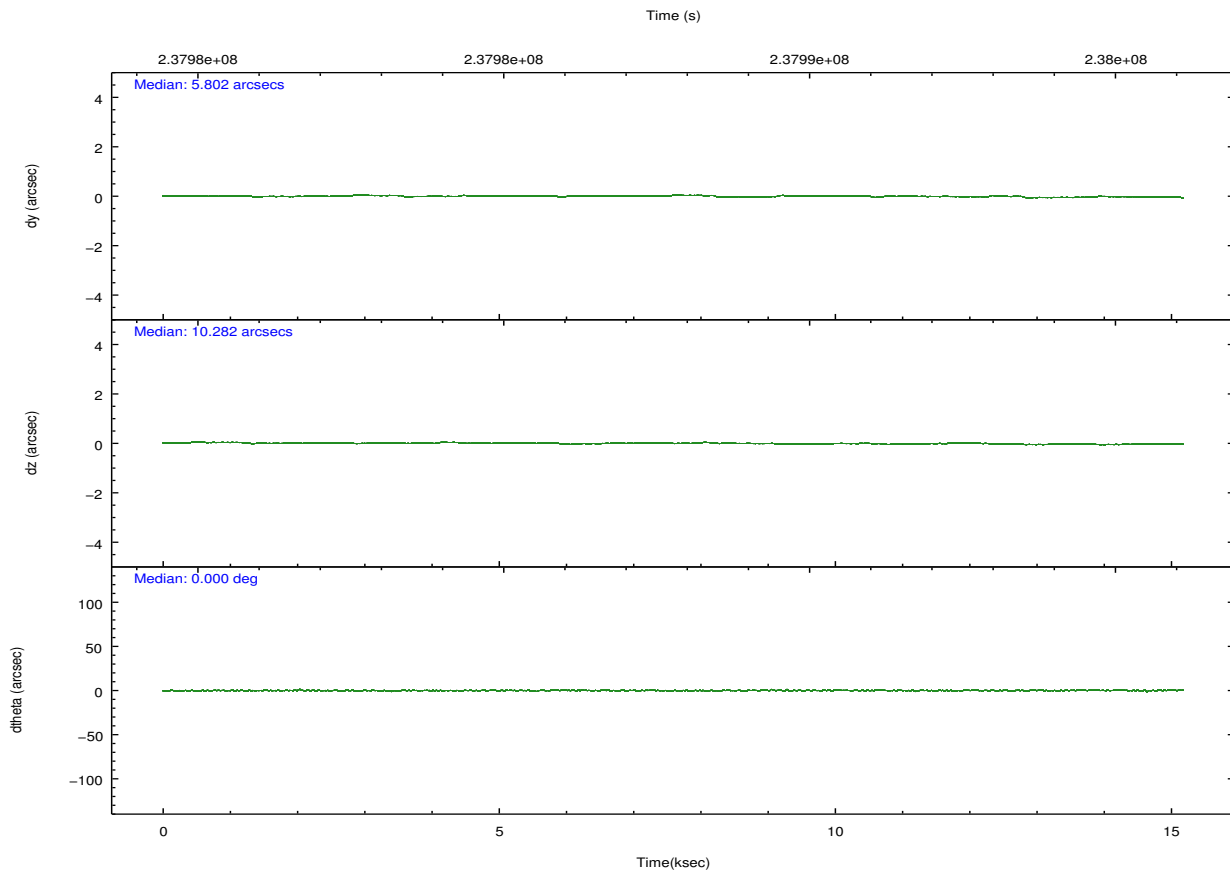
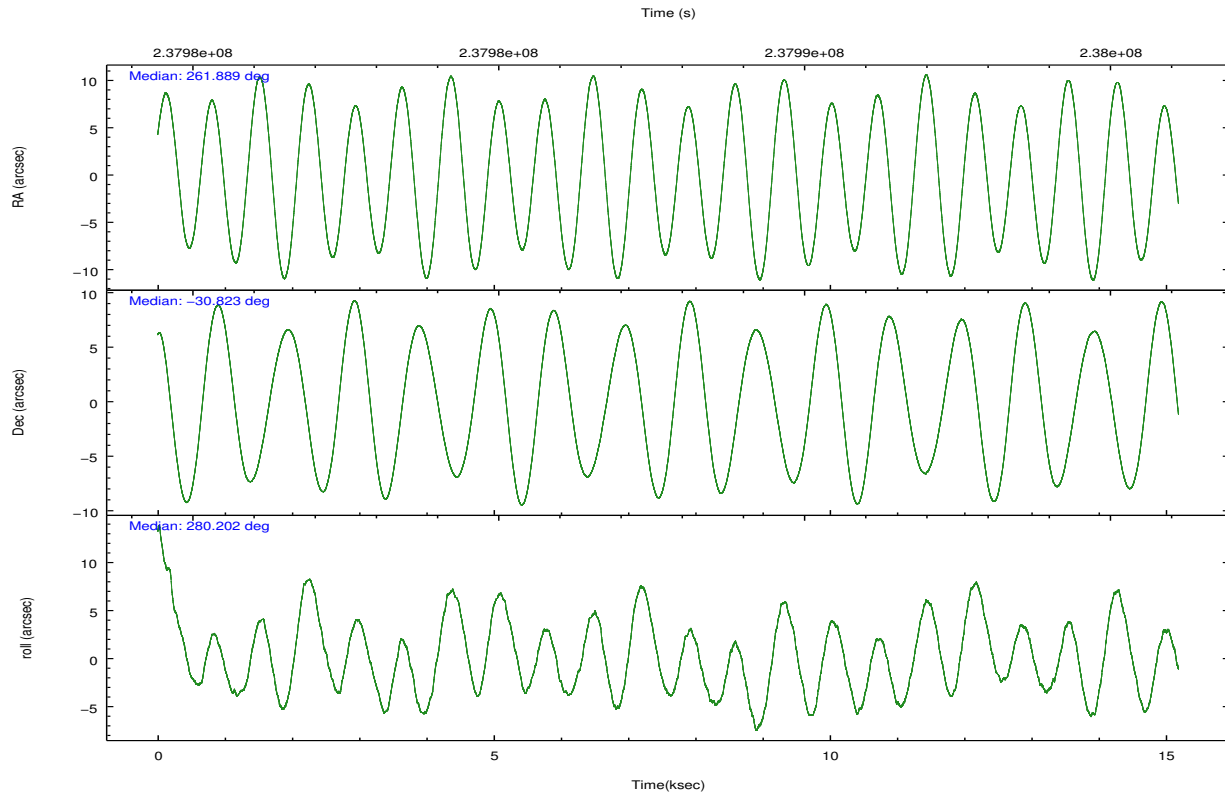
2.1.4 Events

	ccd 0	ccd 1	ccd 2	ccd 3	ccd 6	ccd 7		ccd 0	ccd 1	ccd 2	ccd 3	ccd 6	ccd 7
level 1 events	99038	103855	122397	200381	115296	149232	grade 0 events	8000	7691	18815	71262	8316	7338
rejected events	82275	86201	92385	98938	97650	82013		8%	7%	15%	35%	7%	4%
rejected %	83%	83%	75%	49%	84%	54%	grade 1 events	69	48	147	1970	79	140
								0%	0%	0%	0%	0%	0%
							grade 2 events	3583	3944	4921	13520	3819	14061
								3%	3%	4%	6%	3%	9%
							grade 3 events	1309	1370	1722	4786	1338	6089
								1%	1%	1%	2%	1%	4%
							grade 4 events	1272	1479	1835	4892	1316	6169
								1%	1%	1%	2%	1%	4%
							grade 5 events	4142	4311	4177	6499	4916	13350
								4%	4%	3%	3%	4%	8%
							grade 6 events	2606	3175	2735	7022	2870	33582
								2%	3%	2%	3%	2%	22%
							grade 7 events	78057	81837	88045	90430	92642	68503
								78%	78%	71%	45%	80%	45%

2.2 Compared Parameters

Parameter	Planned	Actual	Parameter	Planned	Actual
Instrument	ACIS	ACIS	Obspar format version number	7	7
Detector	ACIS-012367	ACIS-012367	Obspar file type	PREDICTED	ACTUAL
Grating	NONE	NONE	Obspar update status	NONE	UPDATED
Data mode	FAINT	FAINT	Number of optional ACIS chips dropped	0	0
Observation mode	POINTING	POINTING	On-chip summing requested	N	N
[deg] Pointing RA	261.868589	261.8893070938091	Subarray requested	NONE	NONE
[deg] Pointing Dec	-30.802494	-30.82333263921408	Alternating exposures requested	N	N
[deg] Pointing Roll	279.990533	280.2098301893976	[s] Primary exposure time	0.000000	3.2
[mm] SIM focus pos	-0.782348	-0.7809083437167272			
[mm] SIM defocus	0	0.001439871863259334			
[mm] SIM translation stage pos	-215.592463	-215.5874512169607			
[mm] SIM translation stage offset	-18	-18.00500178596903			
[s] Observation start time (MET)	237980354.184000	237979695.41176			
Observation start date	2005-07-17T09:38:10	2005-07-17T09:28:15			
[s] Observation end time (MET)	237995354.184000	237996675.05004			
Observation end date	2005-07-17T13:48:10	2005-07-17T14:11:15			
Read mode	TIMED	TIMED			

2.3 Aspect

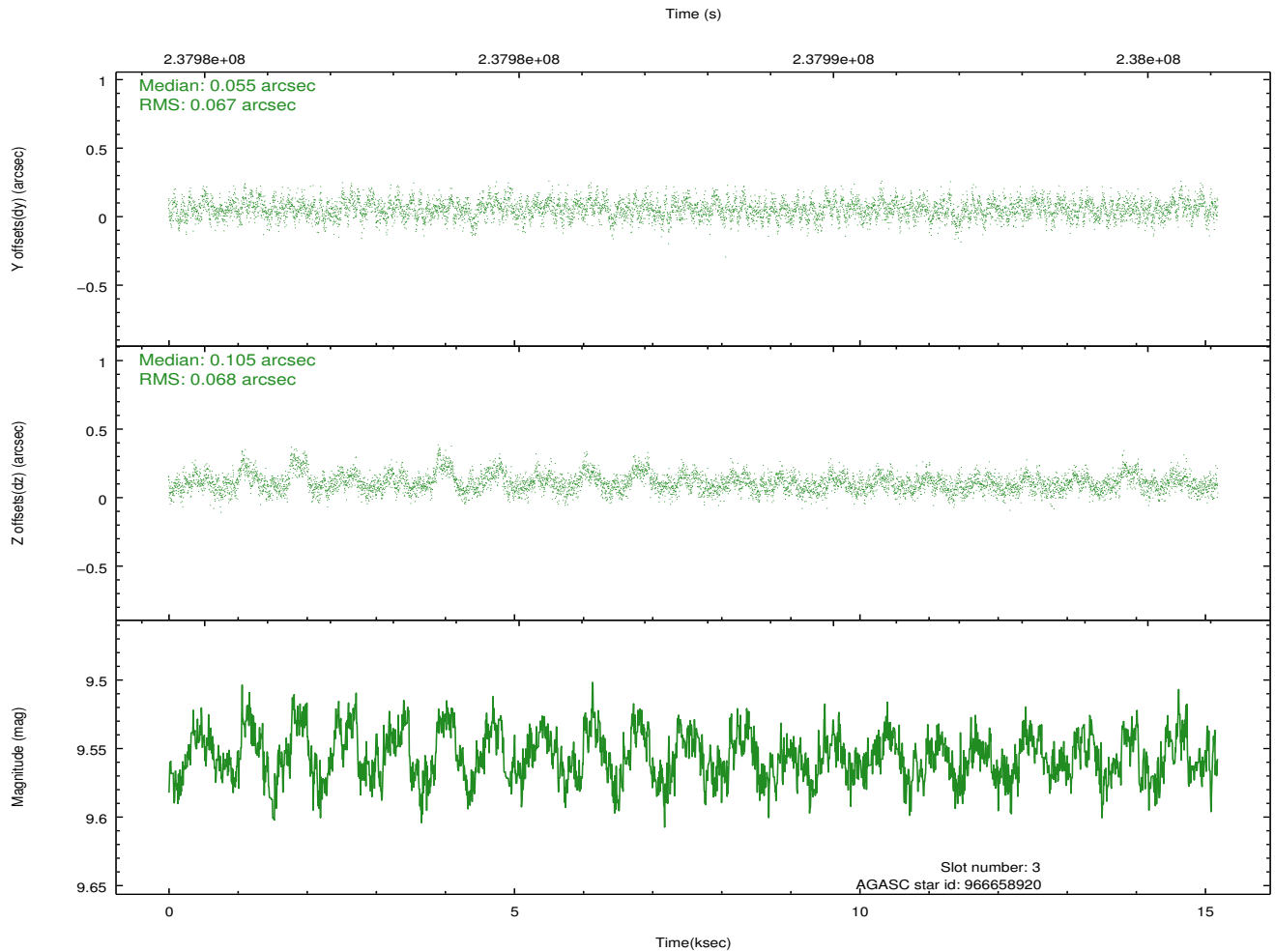
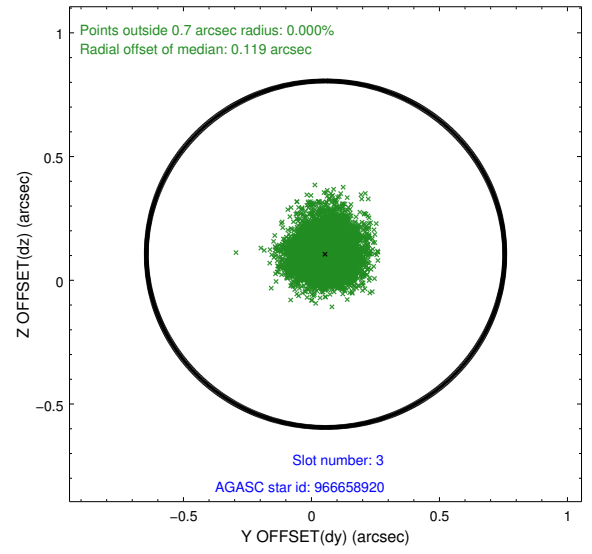
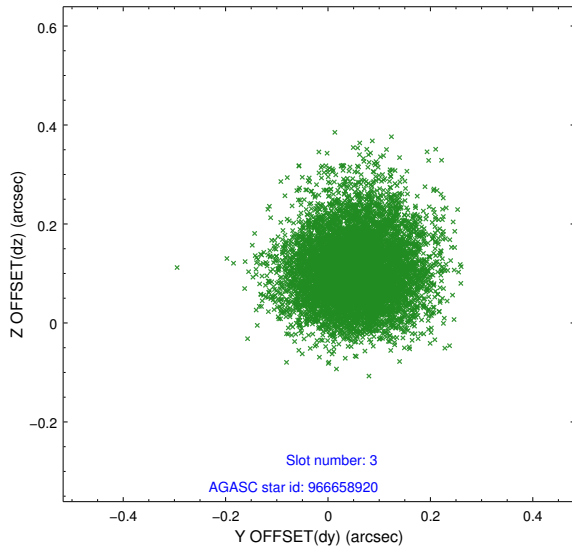


Slot Statistics

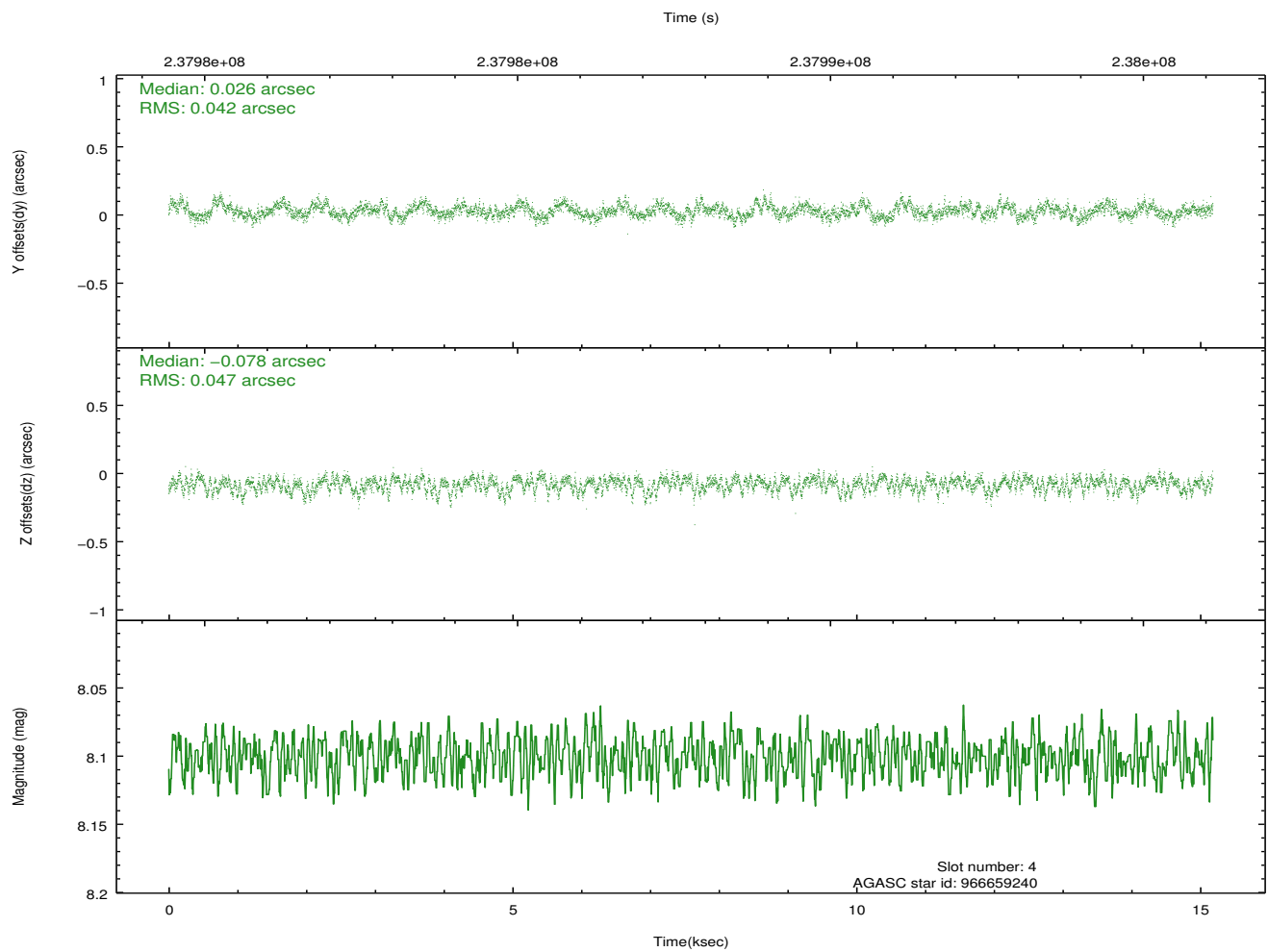
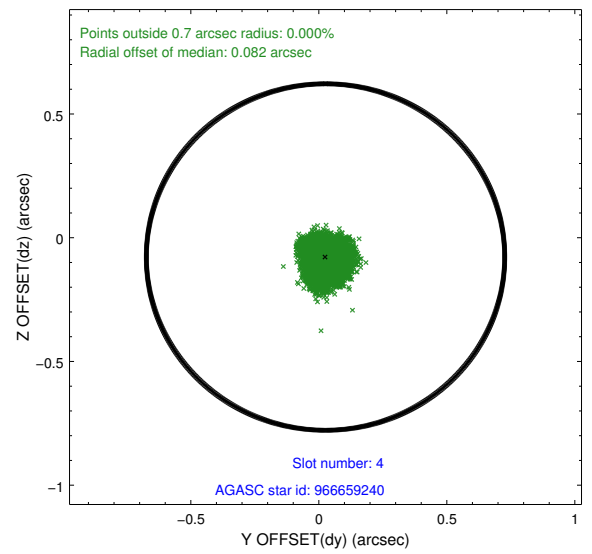
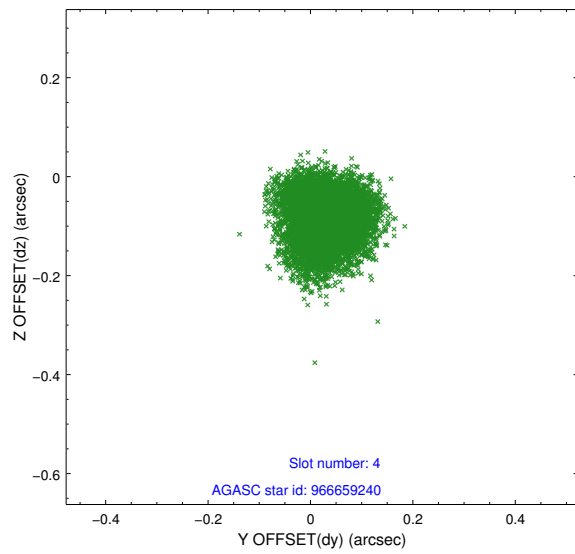
slot	status	id	mag	n_pts	med_dy	med_dz	dr1	dr2	ra	dec	mean_y	mean_z
0	FID	ACIS-I-1	7.21	3704	0.282	-0.234	0.006	0.011	0.000000	0.000000	933.82	-1203.78
1	FID	ACIS-I-5	7.22	3704	-0.406	0.212	0.006	0.011	0.000000	0.000000	-1814.74	694.01
2	FID	ACIS-I-6	7.27	3702	0.033	0.093	0.007	0.011	0.000000	0.000000	398.88	1338.66
3	GUIDE	966658920	9.56	7406	0.055	0.105	0.101	0.166	262.388325	-31.303244	2056.74	1261.16
4	GUIDE	966659240	8.10	7409	0.026	-0.078	0.067	0.108	262.189777	-30.931568	631.67	895.84
5	GUIDE	966662864	6.51	7408	-0.114	0.016	0.037	0.059	261.732957	-31.091595	953.15	-592.40
6	GUIDE	966663720	7.86	7409	-0.022	-0.022	0.053	0.087	262.170068	-31.384212	2224.92	548.73
7	GUIDE	966663784	8.73	7379	0.054	-0.022	0.077	0.124	261.636886	-31.482666	2289.74	-1125.44

2.4 Star Slots

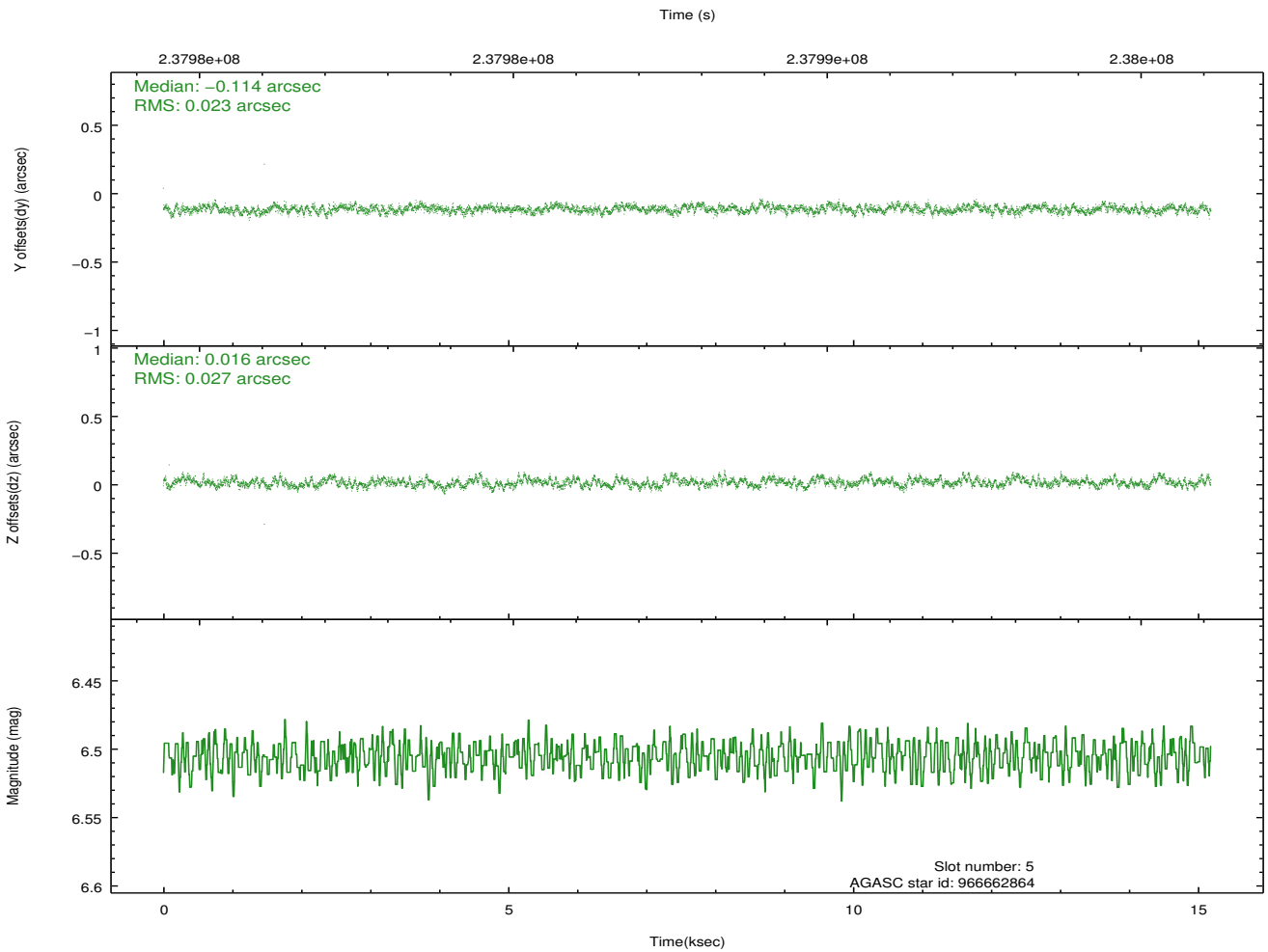
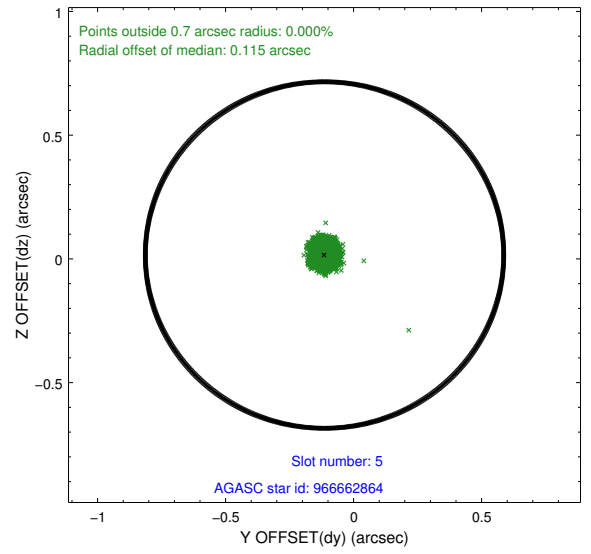
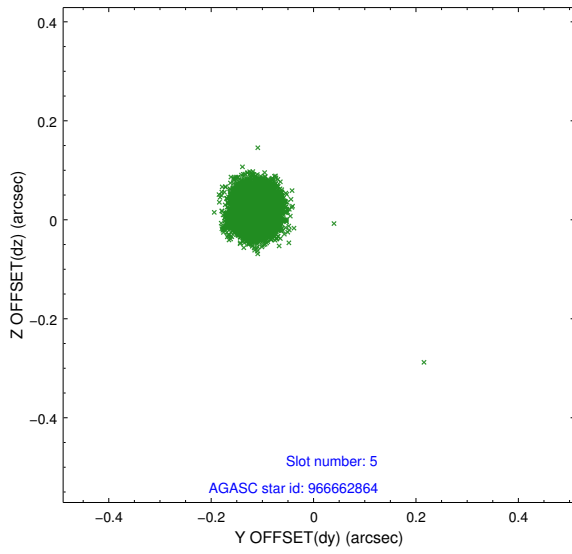
2.4.1 Slot 3



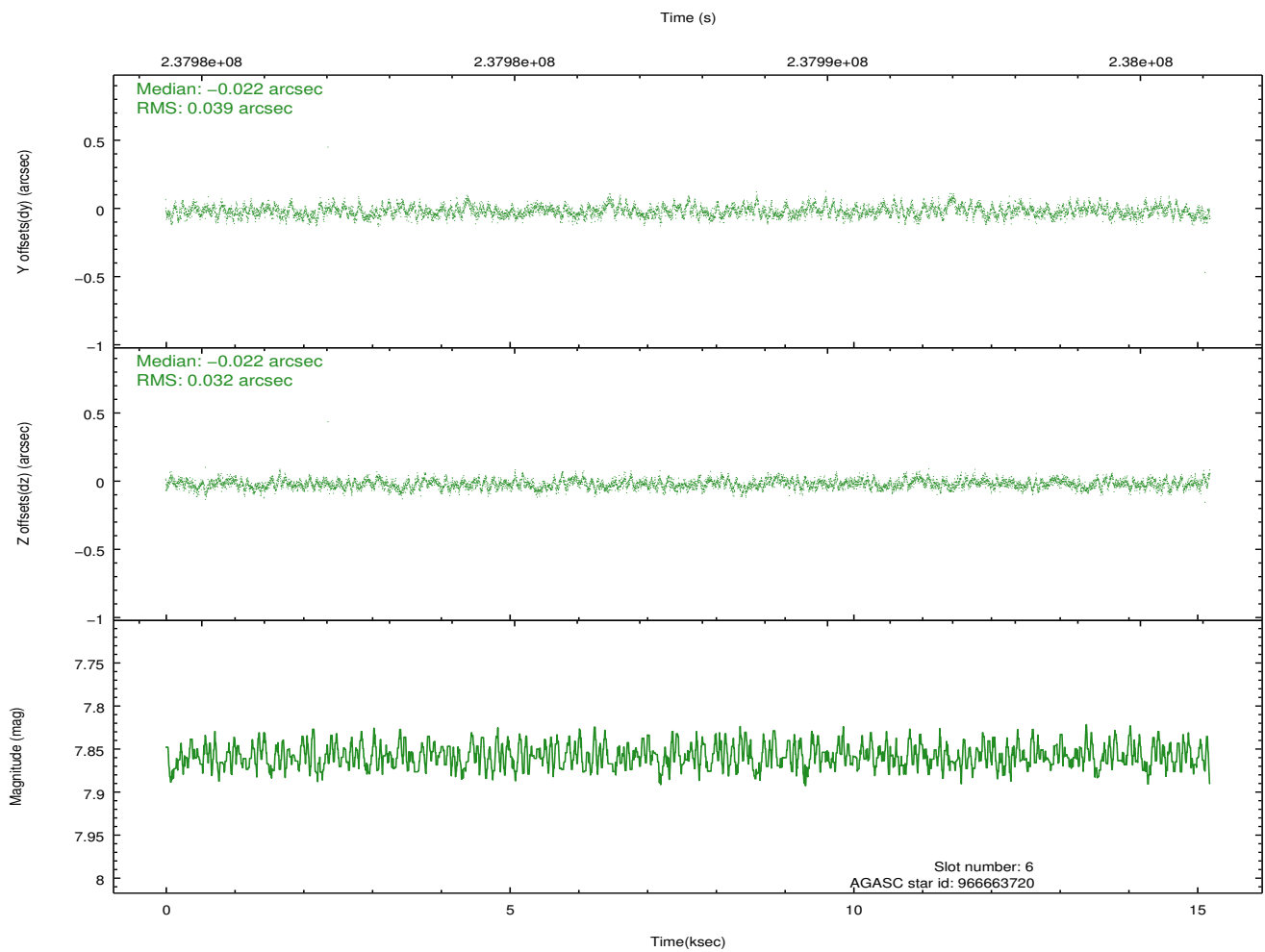
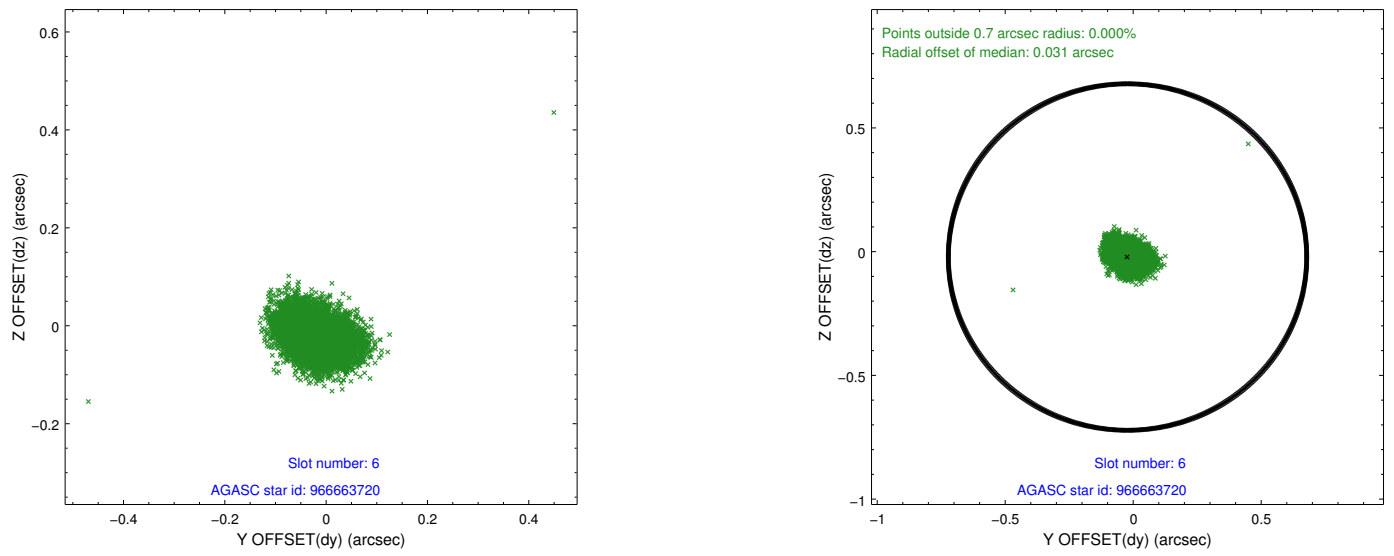
2.4.2 Slot 4



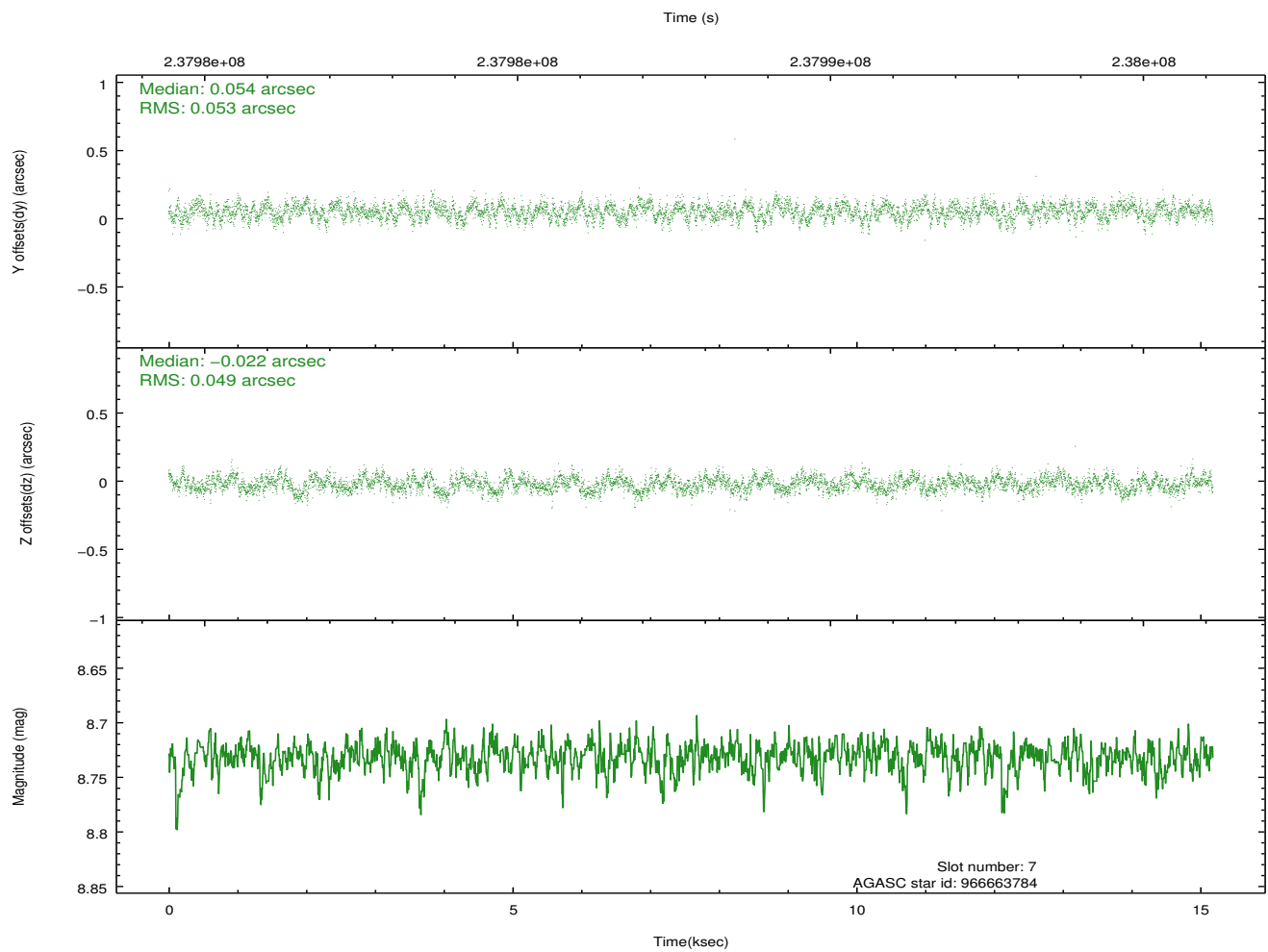
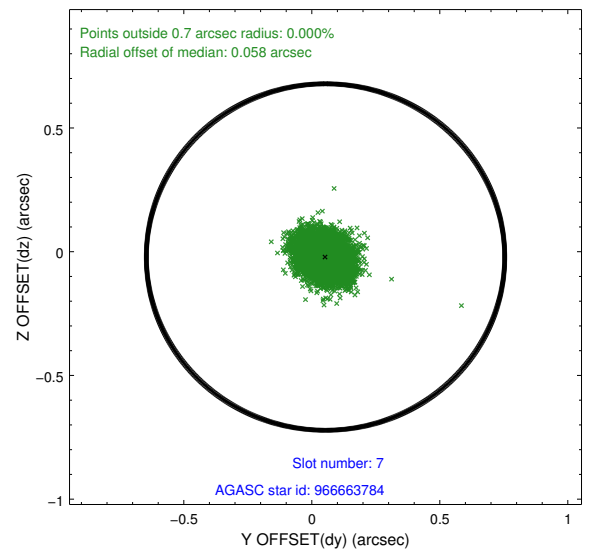
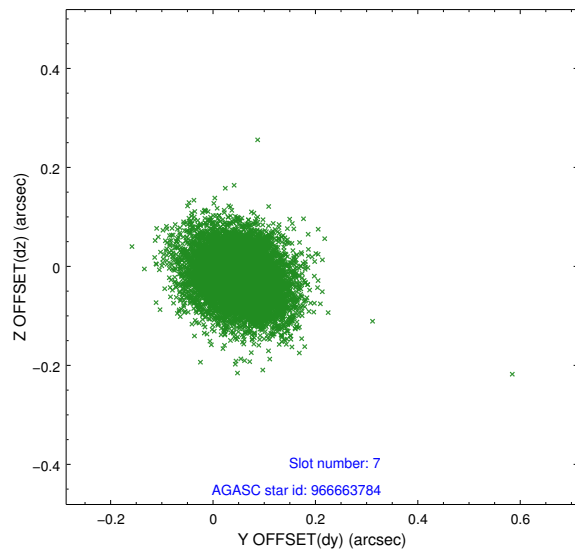
2.4.3 Slot 5



2.4.4 Slot 6

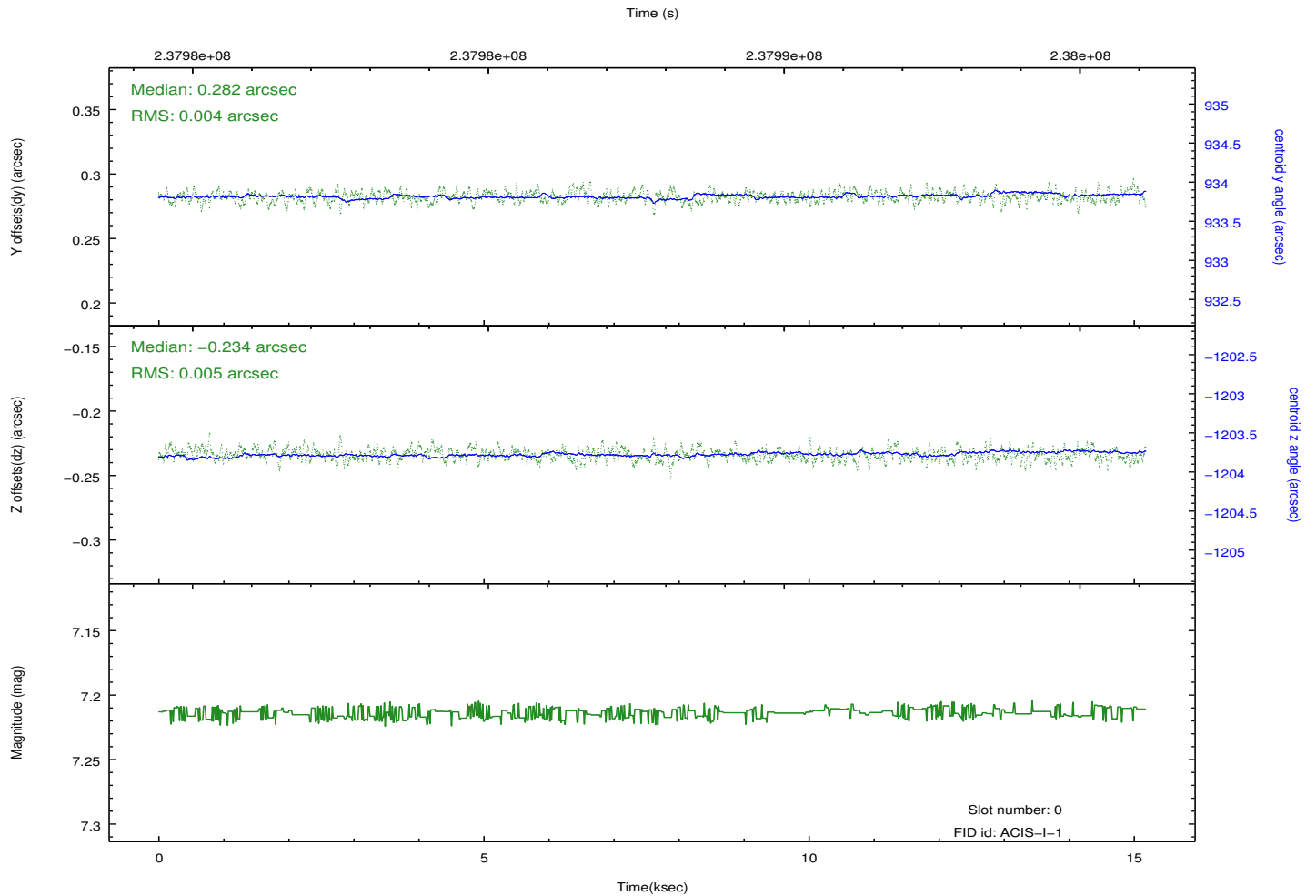
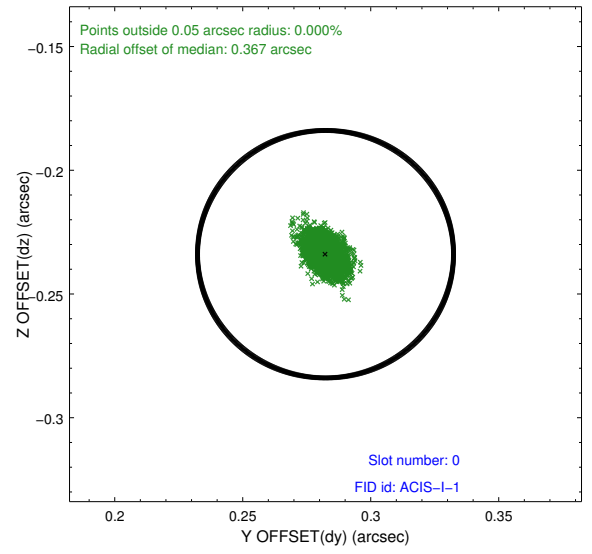
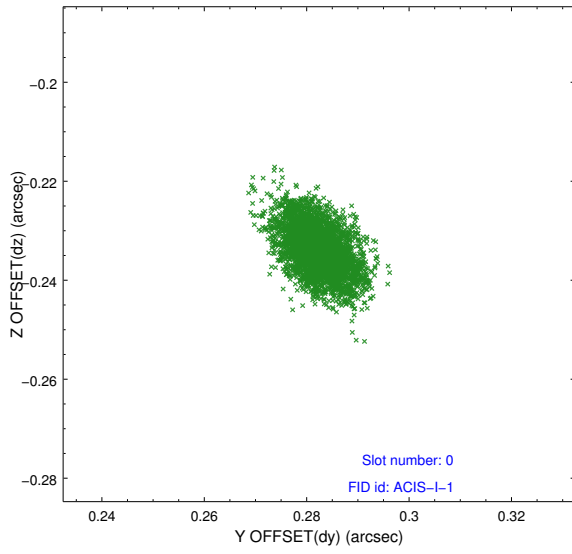


2.4.5 Slot 7

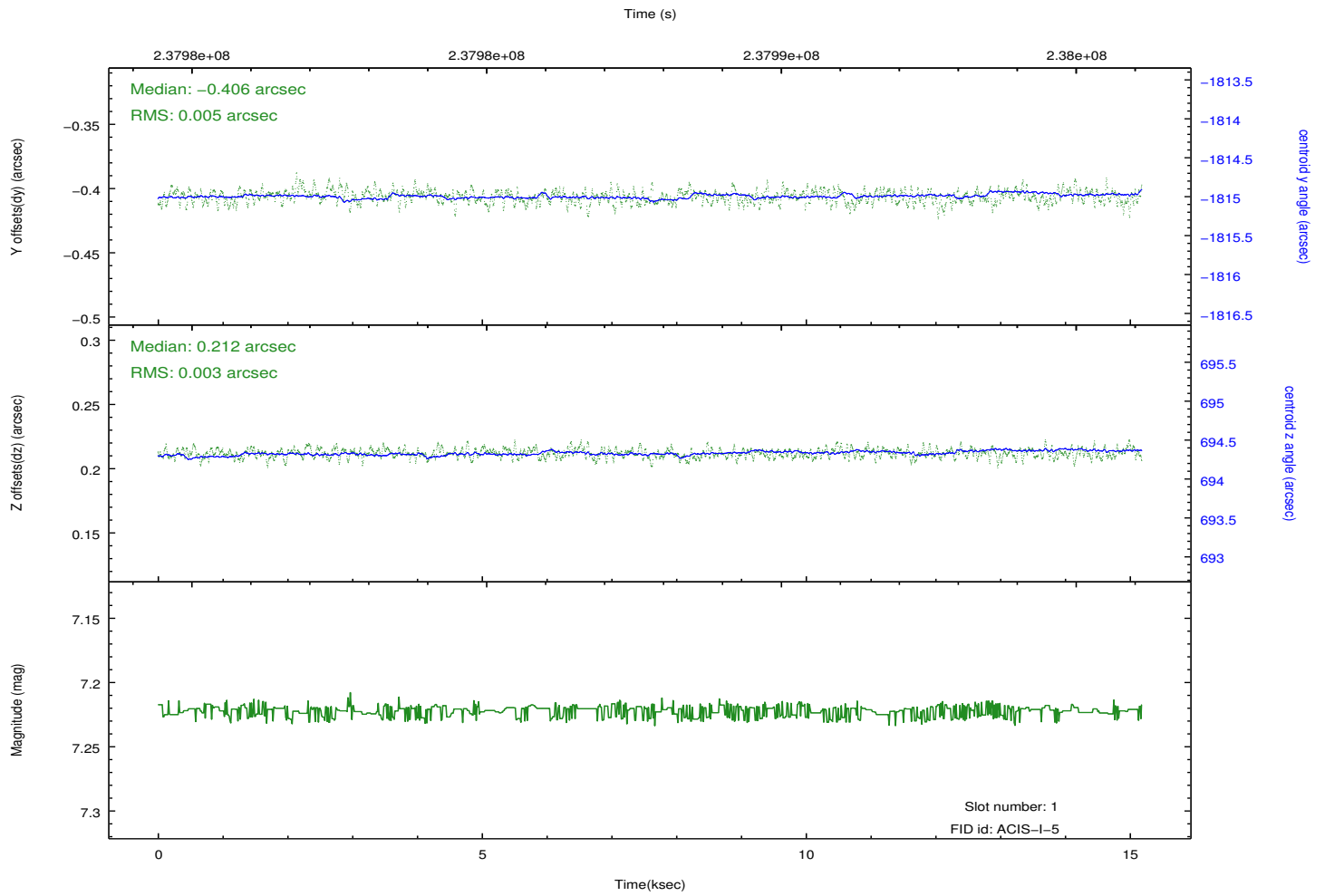
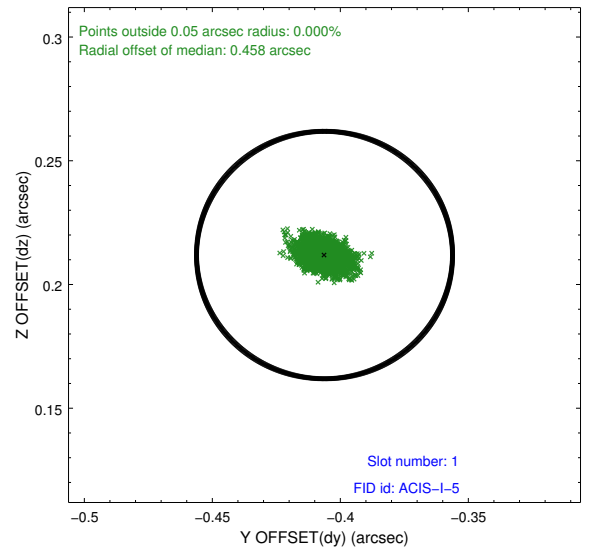
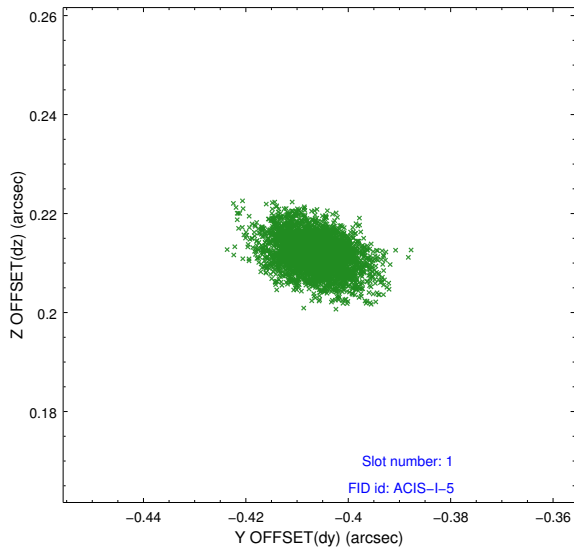


2.5 FID Slots

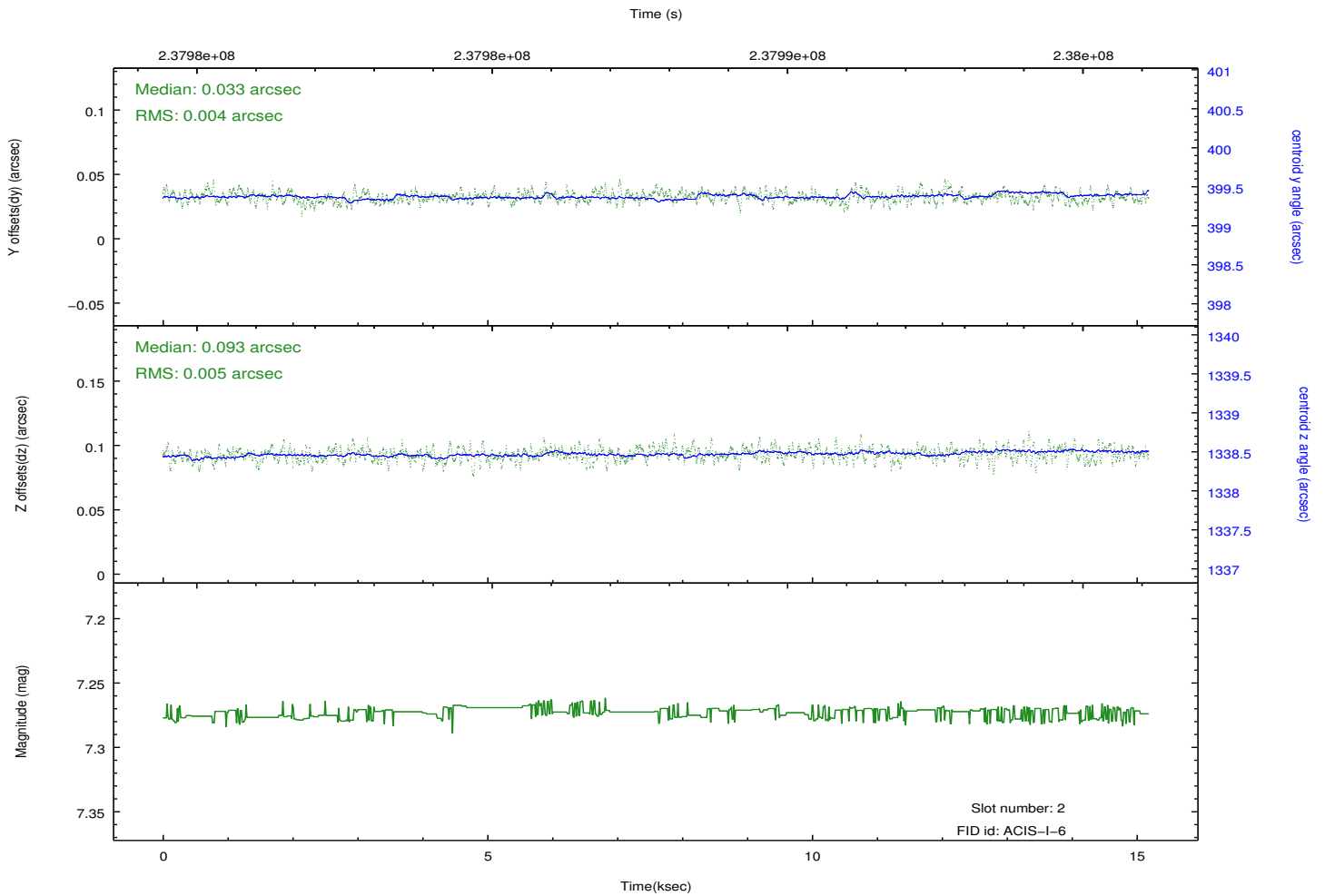
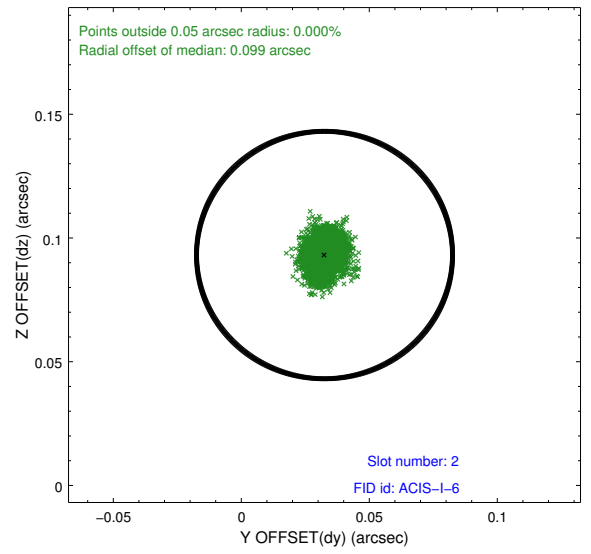
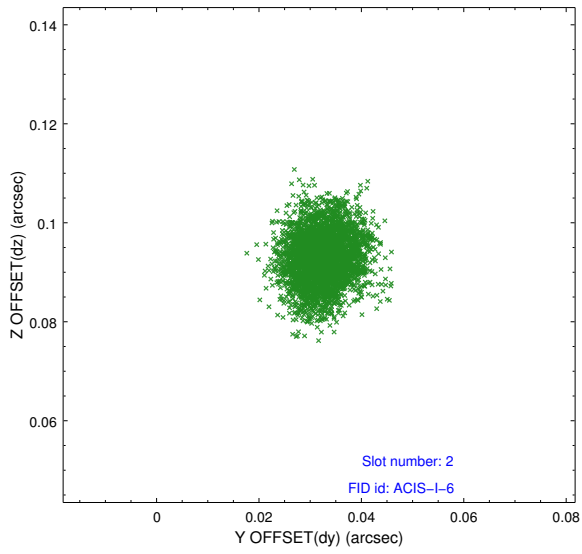
2.5.1 Slot 0



2.5.2 Slot 1



2.5.3 Slot 2



A Summary

A.1 Status

V&V Scientist	Jen Lauer
V&V Date (YYYY-MM-DD)	2013.01.25
V&V Edition	1
V&V Disposition and Status	OK
V&V Charge Time	14.75519

A.2 Comments

This observation was performed with a large SIM offset, per PI request. As a result, the fid light positions are offset beyond normally expected ranges, but the fid light position correction has compensated for this offset.