

V&V Reference Report

L2 ASCDS Version : 8.5.1.1

Observation 6121 - L2 Version 3
Chandra X-Ray Center

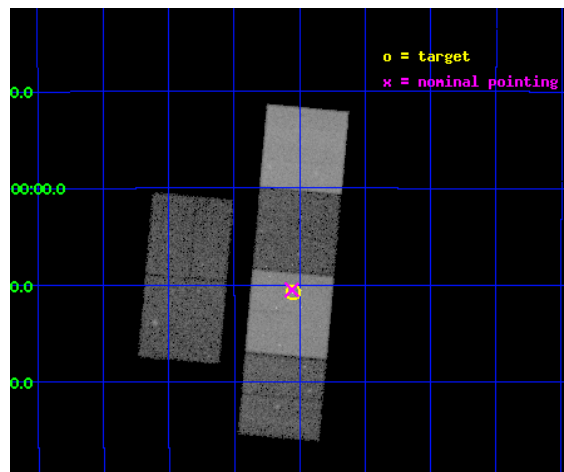
L2 Processing Date : Dec 23 2012

Contents

1	Front	2
2	OBI	3
2.1	OBI	3
2.1.1	Images	3
2.1.2	Bias	3
2.1.3	Parameters	4
2.1.4	Events	4
2.2	Compared Parameters	5
2.3	Aspect	6
2.4	Star Slots	9
2.4.1	Slot 3	9
2.4.2	Slot 4	10
2.4.3	Slot 5	11
2.4.4	Slot 6	12
2.5	FID Slots	13
2.5.1	Slot 0	13
2.5.2	Slot 1	14
2.5.3	Slot 2	15
A	Summary	16
A.1	Status	16
A.2	Comments	16

1 Front

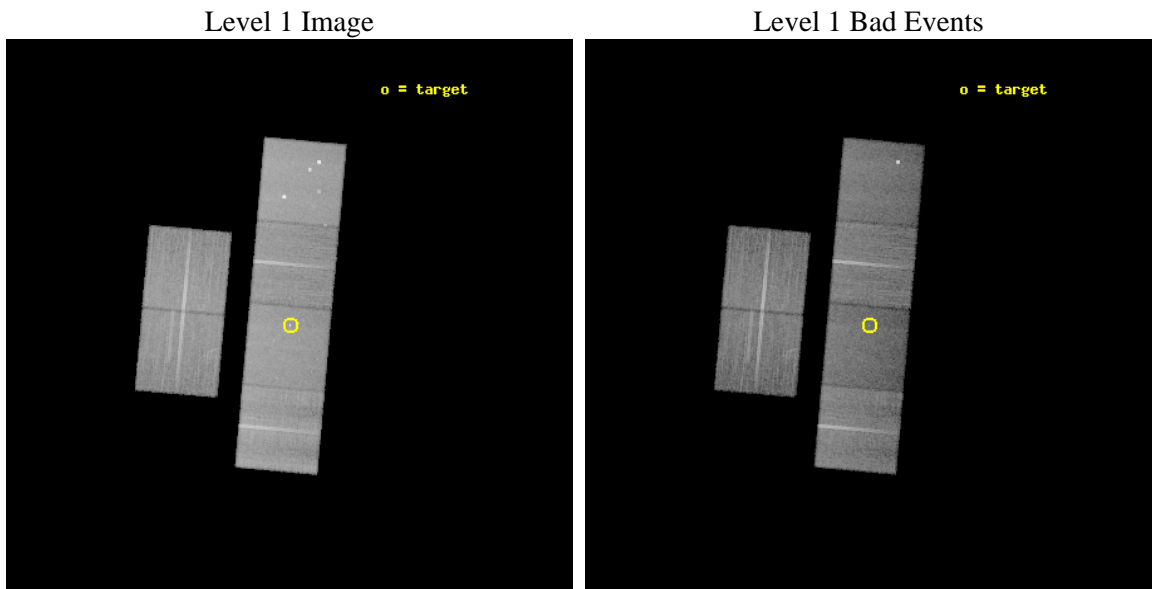
seq_num	200368	Sequence number
obs_id	6121	Observation id
title	Planet-Induced Activity Enhancements in the HD 179949 System	Propo
observer	Dr. Steven Saar	Principal investigator
object	HD 179949	Source name
dtycle	0	
cycle	P	events from which exps? Prim/Second/Both
ra_targ	288.888333	Observer's specified target RA [deg]
dec_targ	-24.179361	Observer's specified target Dec [deg]
ra_nom	288.88977796008	Nominal RA [deg]
dec_nom	-24.175197086727	Nominal Dec [deg]
roll_nom	95.120754615944	Nominal Roll [deg]
revision	3	Processing version of data
ontime	30022.358907878	Sum of GTIs [s]
livetime	29642.197722093	Livetime [s]
ontime2	30025.599888146	Sum of GTIs [s]
ontime3	30019.117937505	Sum of GTIs [s]
ontime5	30022.358907878	Sum of GTIs [s]
ontime6	30025.599888146	Sum of GTIs [s]
ontime7	30022.358907878	Sum of GTIs [s]
ontime8	30022.358917773	Sum of GTIs [s]
l2events	272485	Number of level 2 events



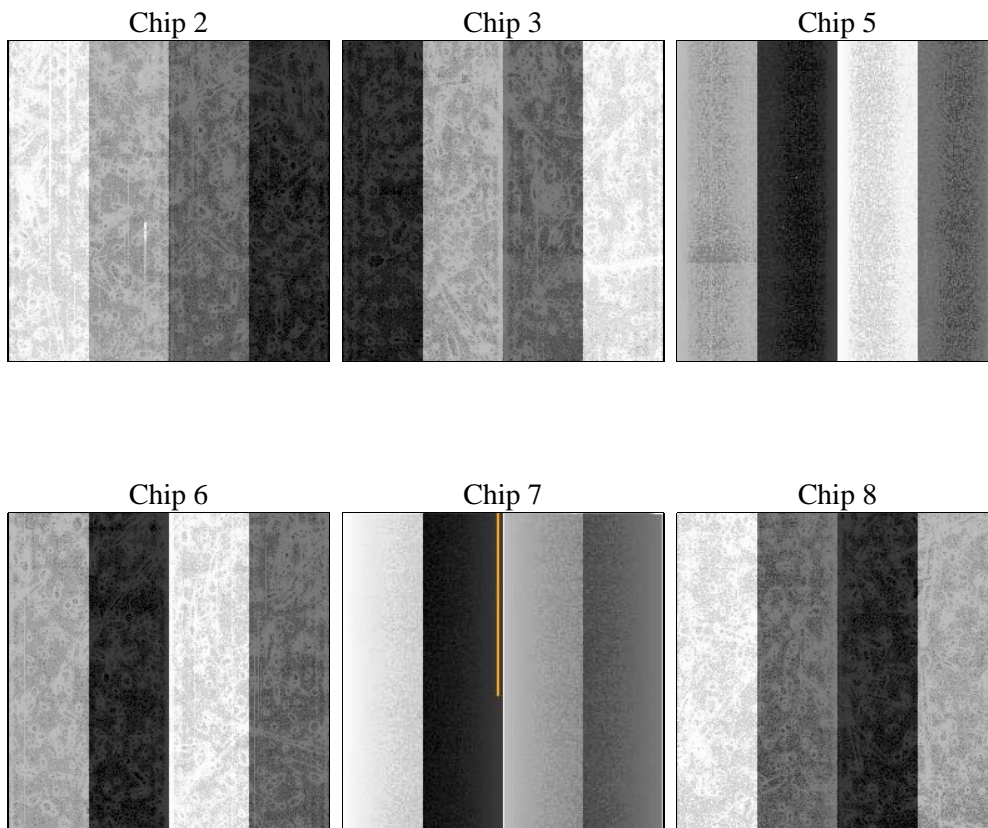
2 OBI

2.1 OBI

2.1.1 Images



2.1.2 Bias



2.1.3 Parameters

obi_num	0	Obi number	sched_exp_time	30000.000000	[s] Scheduled observation exposure time
ascdsver	8.5.1.1	Processing system revision	ontime	30022.358907878	Sum of GTIs [s]
caldsver	4.5.5	 	ontime2	30025.599888146	Sum of GTIs [s]
date	2012-12-23T19:21:04	Date and time of file creation	ontime3	30019.117937505	Sum of GTIs [s]
revision	3	Processing version of data	ontime5	30022.358907878	Sum of GTIs [s]
			ontime6	30025.599888146	Sum of GTIs [s]
			ontime7	30022.358907878	Sum of GTIs [s]
			ontime8	30022.358917773	Sum of GTIs [s]
			l1events	1222071	Number of level 1 events

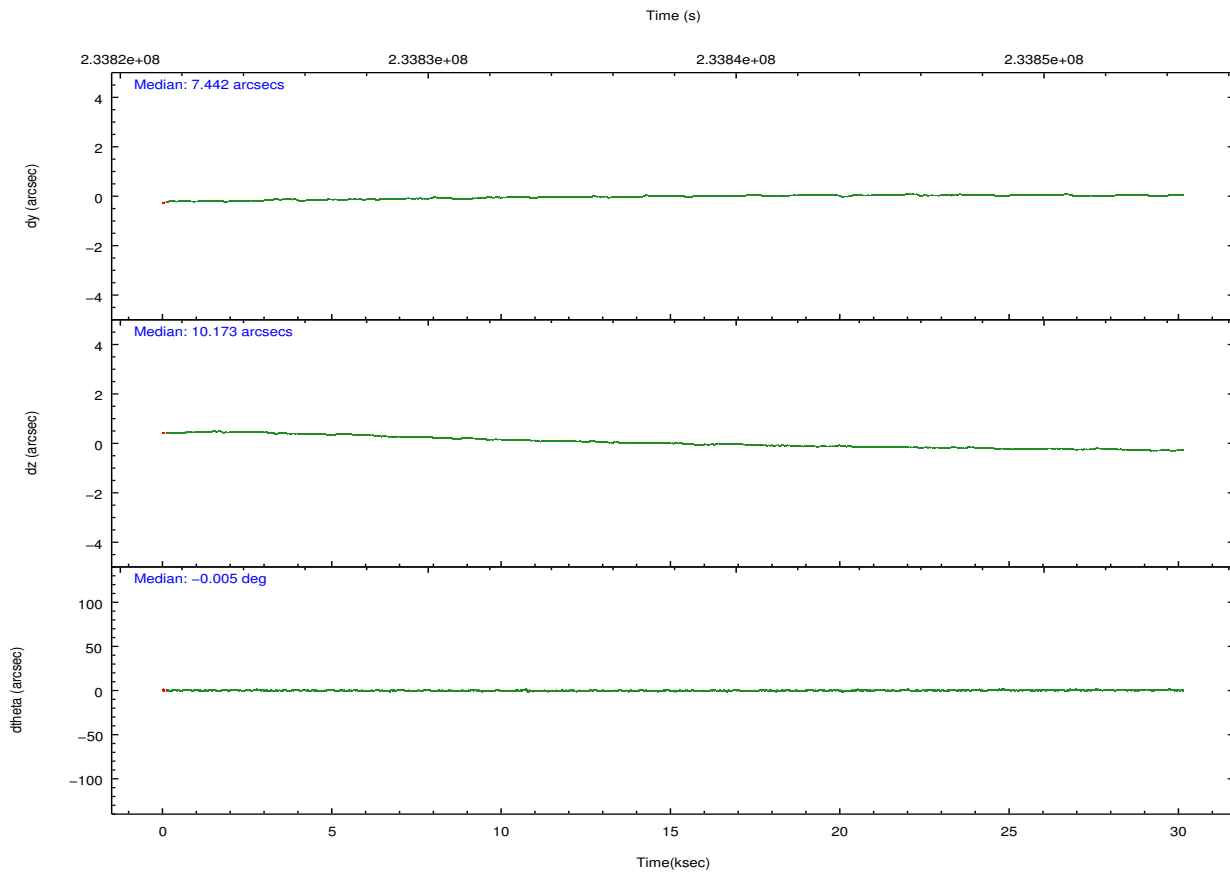
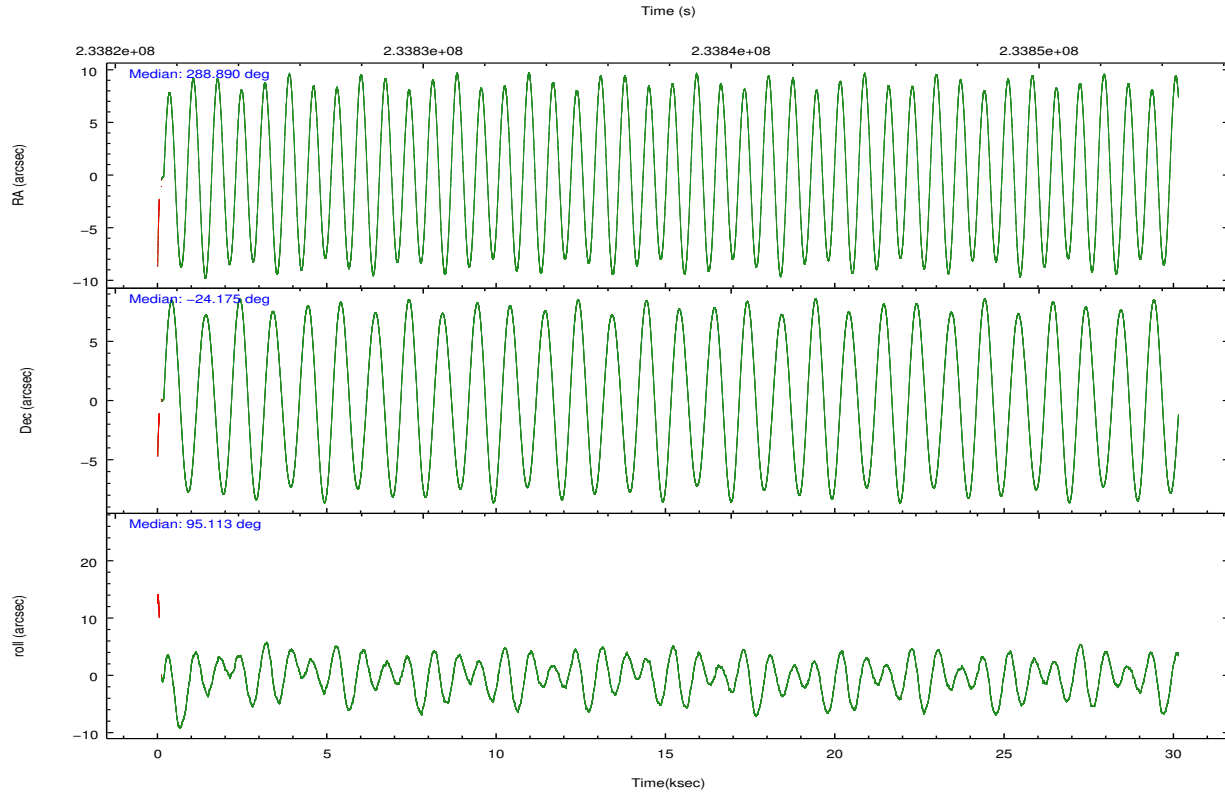
2.1.4 Events

	ccd 2	ccd 3	ccd 5	ccd 6	ccd 7	ccd 8		ccd 2	ccd 3	ccd 5	ccd 6	ccd 7	ccd 8
level 1 events	188588	171204	254761	178599	203693	225226	grade 0 events	6670	6735	16839	7347	9909	15980
rejected events	170494	153699	127353	159219	108706	172879		3%	3%	6%	4%	4%	7%
rejected %	90%	89%	49%	89%	53%	76%	grade 1 events	102	87	237	73	202	167
								0%	0%	0%	0%	0%	0%
							grade 2 events	4283	3631	37579	3940	19473	11790
								2%	2%	14%	2%	9%	5%
							grade 3 events	1940	1971	5450	2085	8970	5637
								1%	1%	2%	1%	4%	2%
							grade 4 events	1915	1916	5081	2032	8886	5295
								1%	1%	1%	1%	4%	2%
							grade 5 events	6301	6983	21680	7330	20980	10305
								3%	4%	8%	4%	10%	4%
							grade 6 events	3313	3270	62605	3999	47854	13732
								1%	1%	24%	2%	23%	6%
							grade 7 events	164064	146611	105290	151793	87419	162320
								86%	85%	41%	84%	42%	72%

2.2 Compared Parameters

Parameter	Planned	Actual	Parameter	Planned	Actual
Instrument	ACIS	ACIS	Obspar format version number	7	7
Detector	ACIS-235678	ACIS-235678	Obspar file type	PREDICTED	ACTUAL
Grating	NONE	NONE	Obspar update status	NONE	UPDATED
Data mode	VFAINT	VFAINT	Number of optional ACIS chips dropped	0	0
Observation mode	POINTING	POINTING	On-chip summing requested	N	N
[deg] Pointing RA	288.907277	288.8897779600816	Subarray requested	NONE	NONE
[deg] Pointing Dec	-24.197268	-24.17519708672693	Alternating exposures requested	N	N
[deg] Pointing Roll	94.971297	95.12075461594368	[s] Primary exposure time	0.000000	3.2
[mm] SIM focus pos	-0.684267	-0.6828225247311905			
[mm] SIM defocus	0	0.001444936568705701			
[mm] SIM translation stage pos	-190.132523	-190.1400660498719			
[mm] SIM translation stage offset	0	0.00754346686406393			
Phase constraints	Y	Y			
[d] Phase period	3.092455	3.092455			
[d] Phase epoch (MJD)	52891.020000	52891.020000			
Phase start	0.510000	0.510000			
Phase end	0.630000	0.630000			
Phase start error	0.030000	0.030000			
Phase end error	0.030000	0.030000			
[s] Observation start time (MET)	233823028.184000	233822020.52182			
Observation start date	2005-05-30T06:49:24	2005-05-30T06:33:40			
[s] Observation end time (MET)	233853028.184000	233853962.08577			
Observation end date	2005-05-30T15:09:24	2005-05-30T15:26:02			
Read mode	TIMED	TIMED			

2.3 Aspect

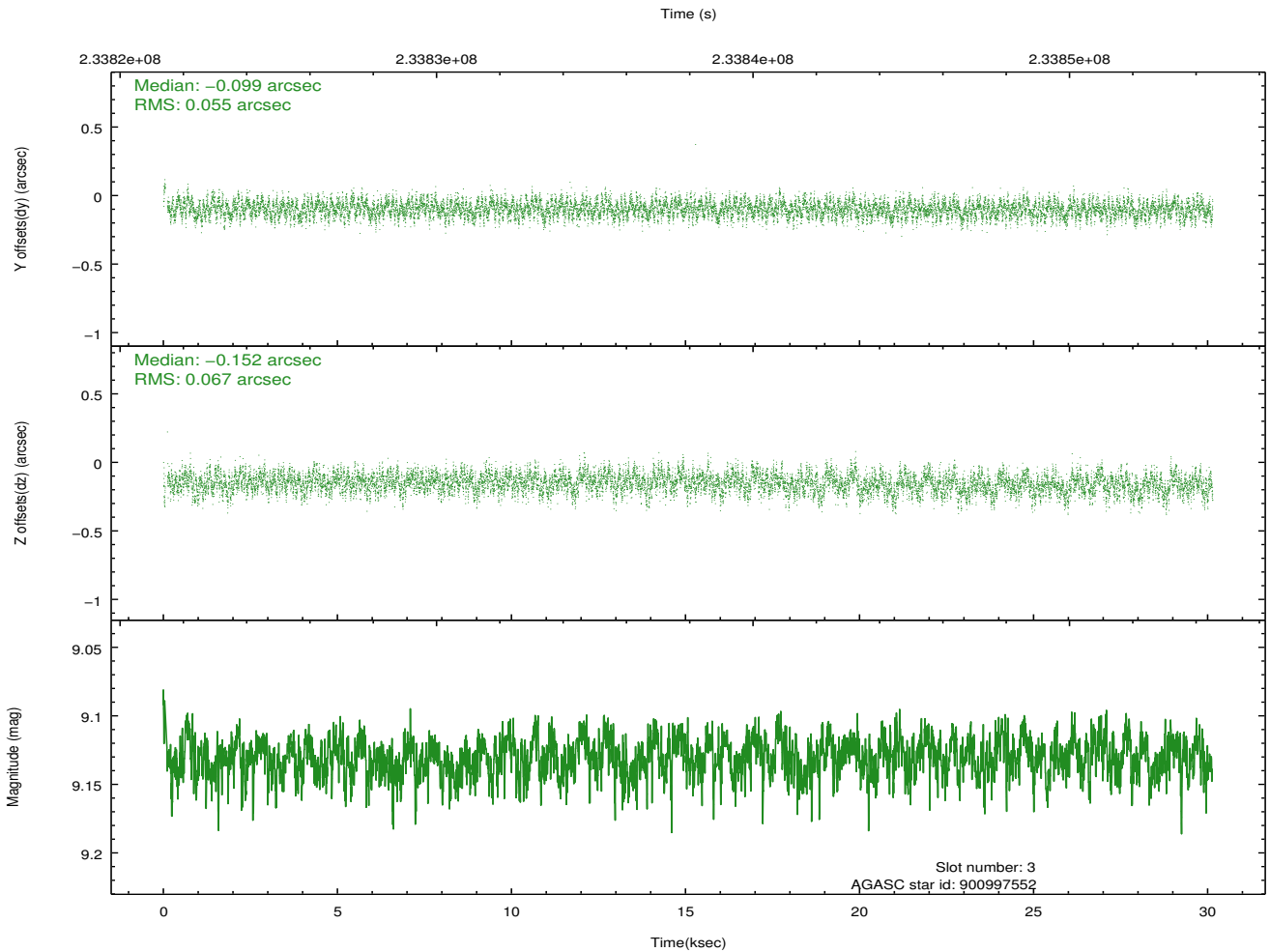
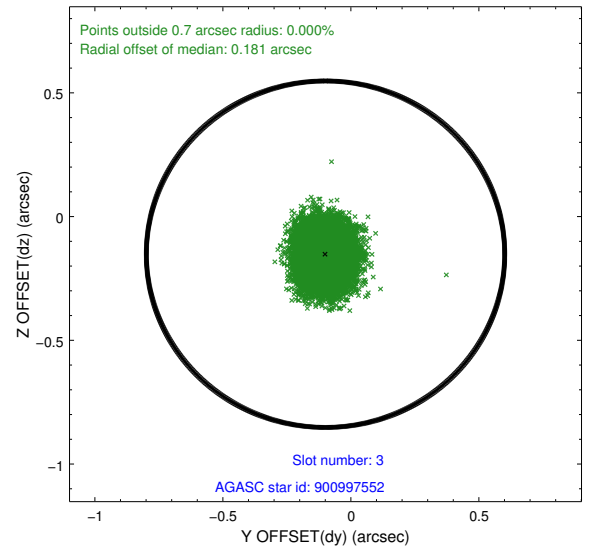
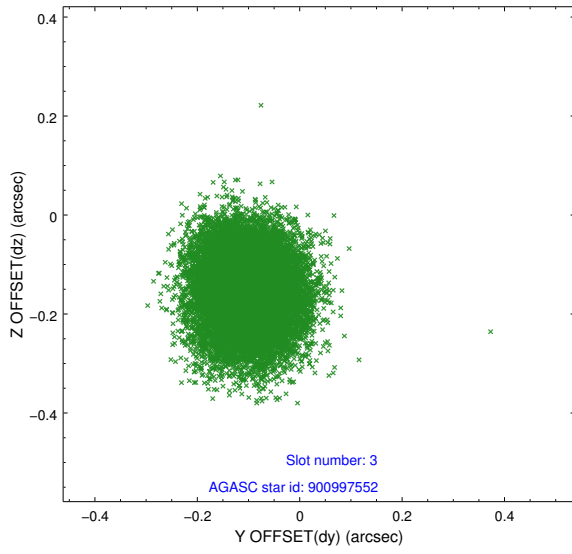


Slot Statistics

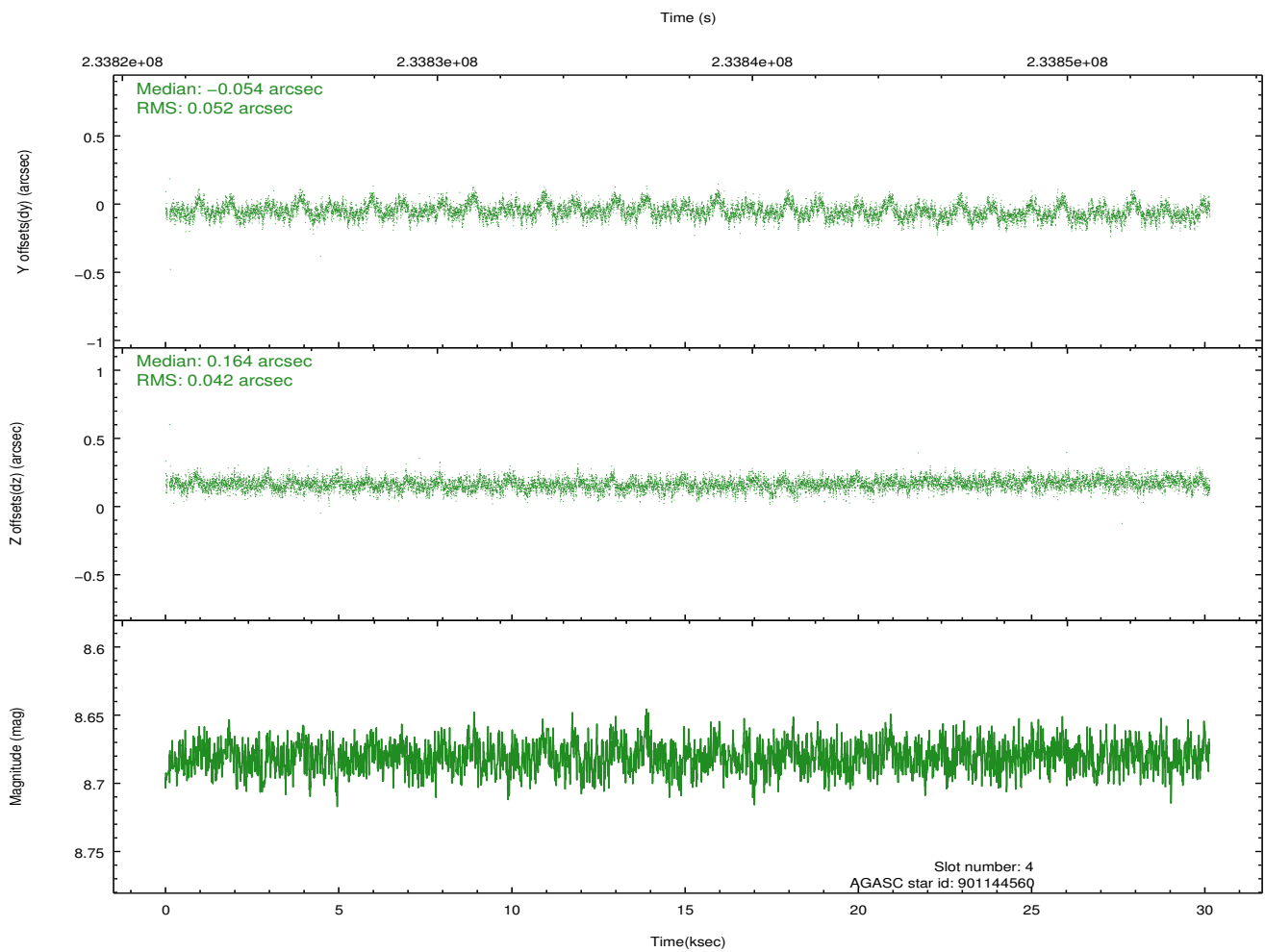
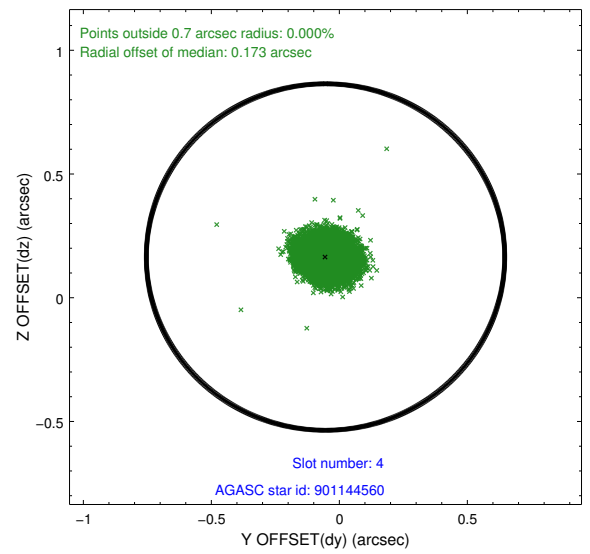
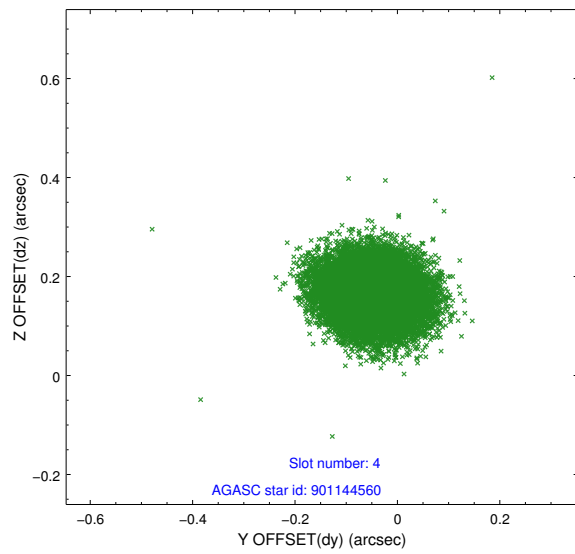
	status	id	mag	n_pts	med_dy	med_dz	dr1
	FID	ACIS-S-2	7.11	7337	-0.054	-0.029	0.011
	FID	ACIS-S-4	7.21	7336	0.106	0.034	0.014
	FID	ACIS-S-5	7.23	7337	-0.082	0.004	0.009
	GUIDE	900997552	9.13	14667	-0.099	-0.152	0.093
	GUIDE	901144560	8.68	14671	-0.054	0.164	0.072
	GUIDE	901514880	8.92	14670	0.089	-0.188	0.086
	GUIDE	901647096	9.15	14665	0.061	0.181	0.080
0.000	0.000	0.000	0.000000	0.000000	0.00	0.00	

2.4 Star Slots

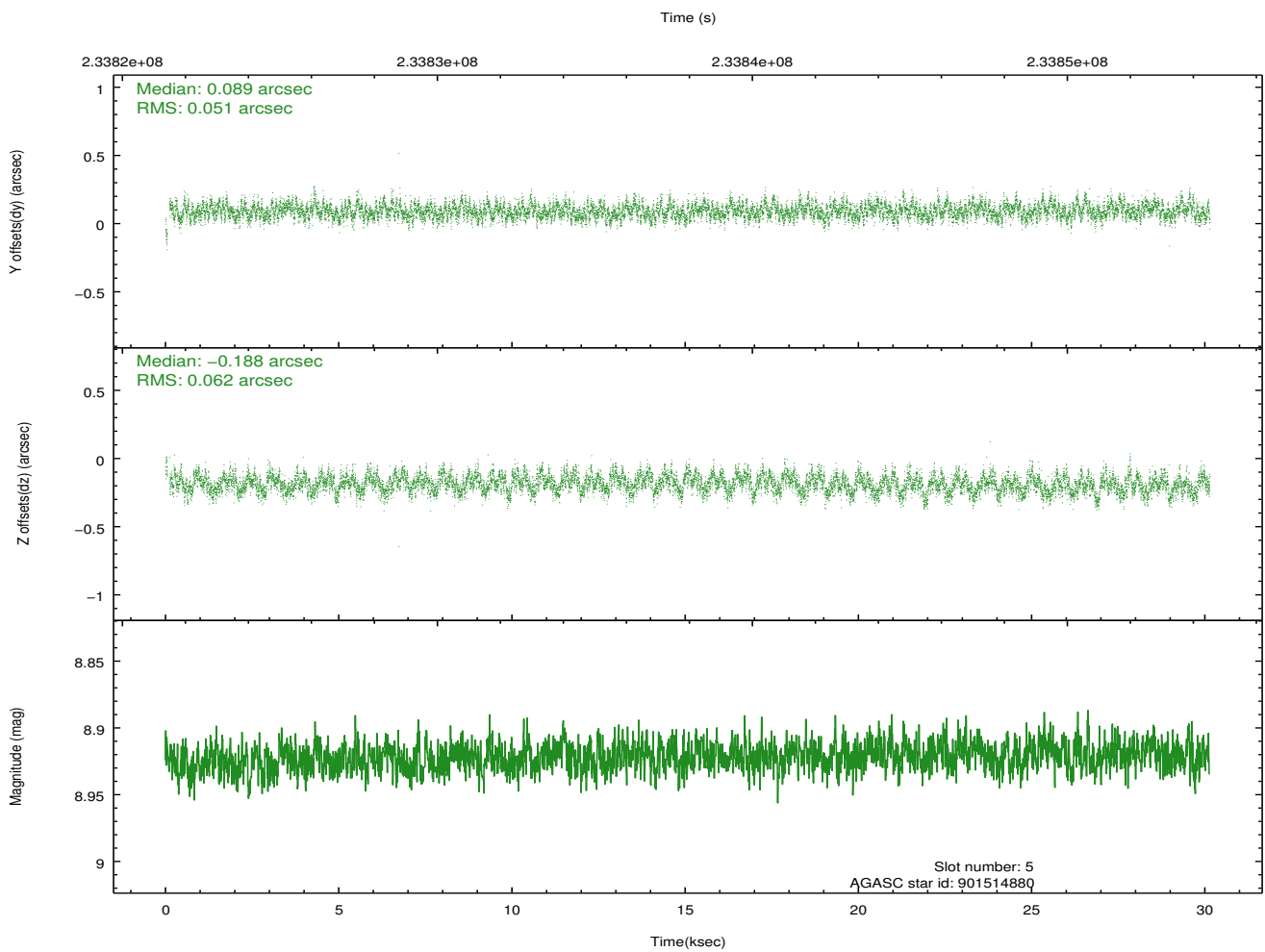
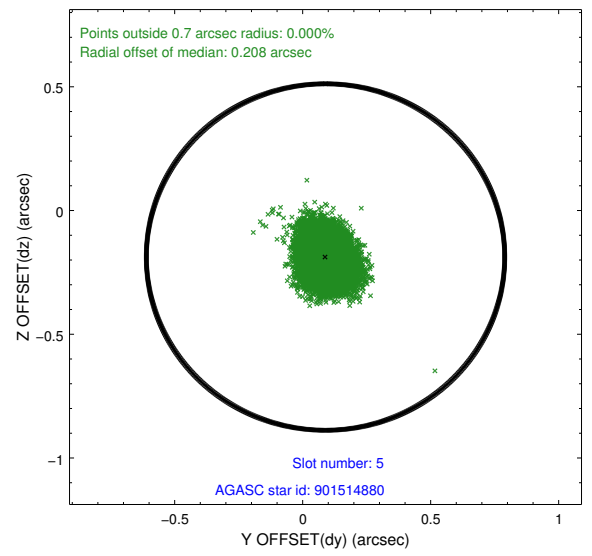
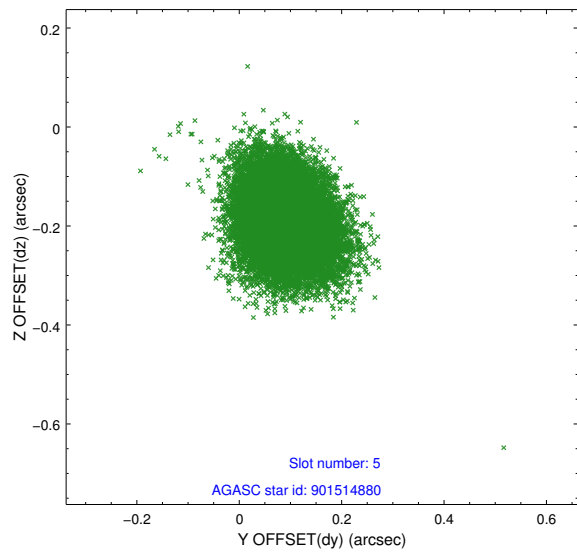
2.4.1 Slot 3



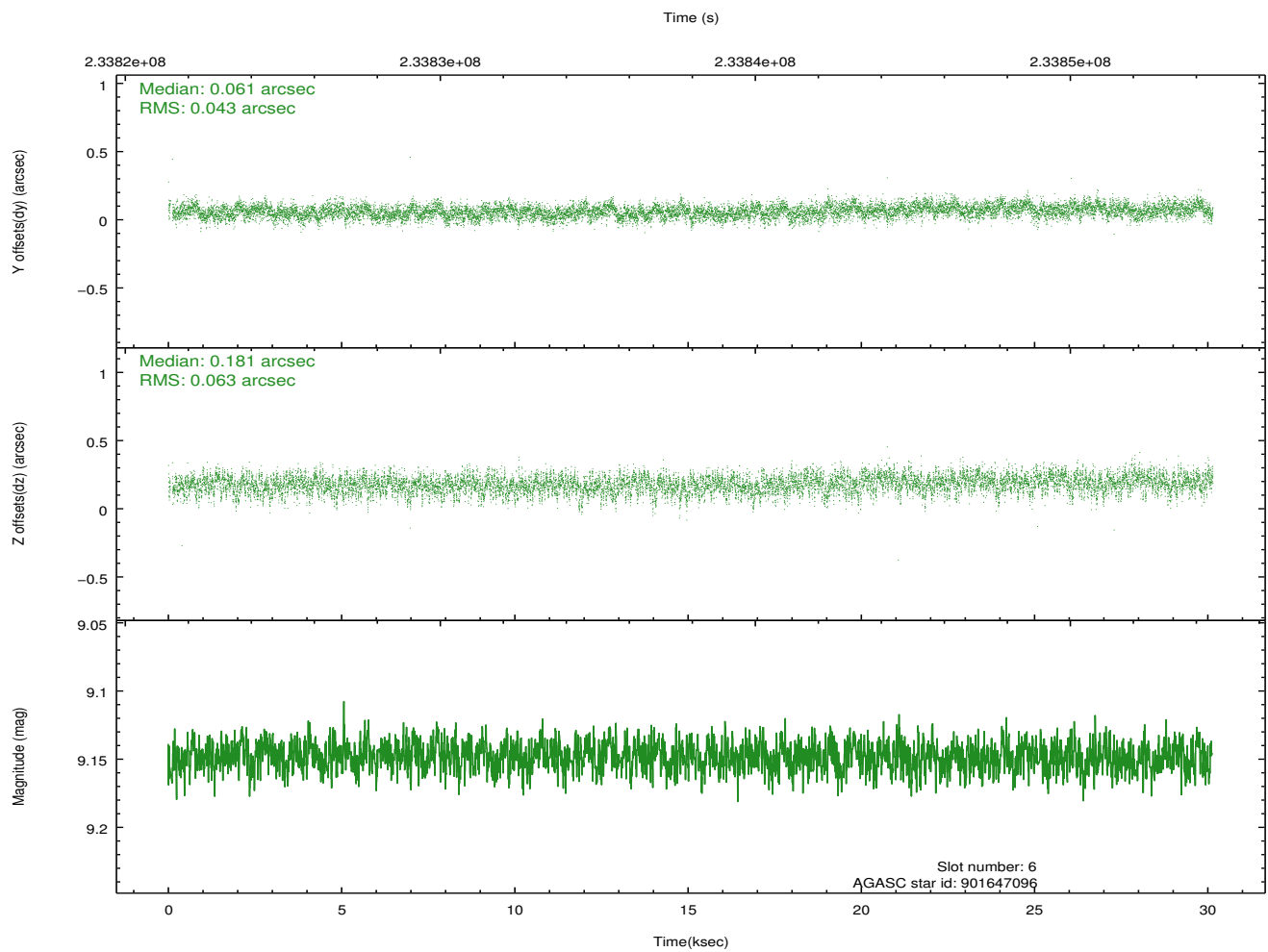
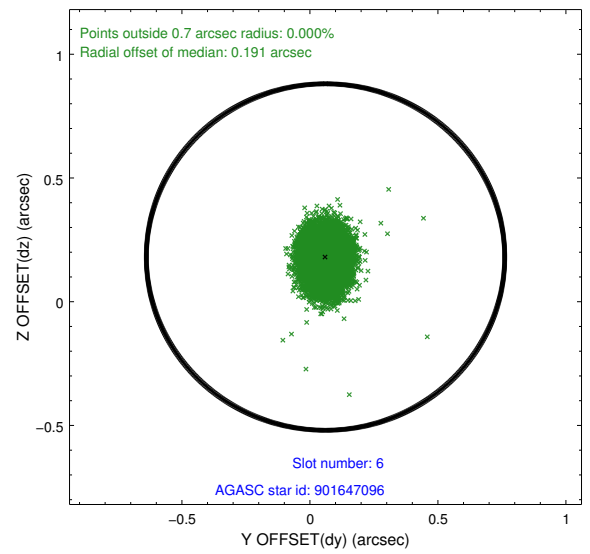
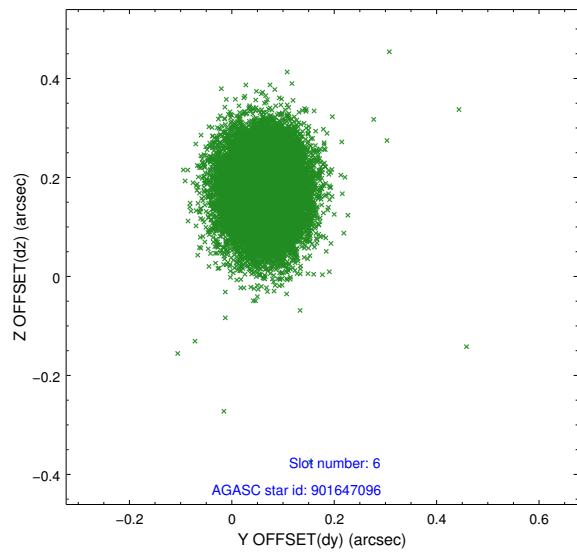
2.4.2 Slot 4



2.4.3 Slot 5

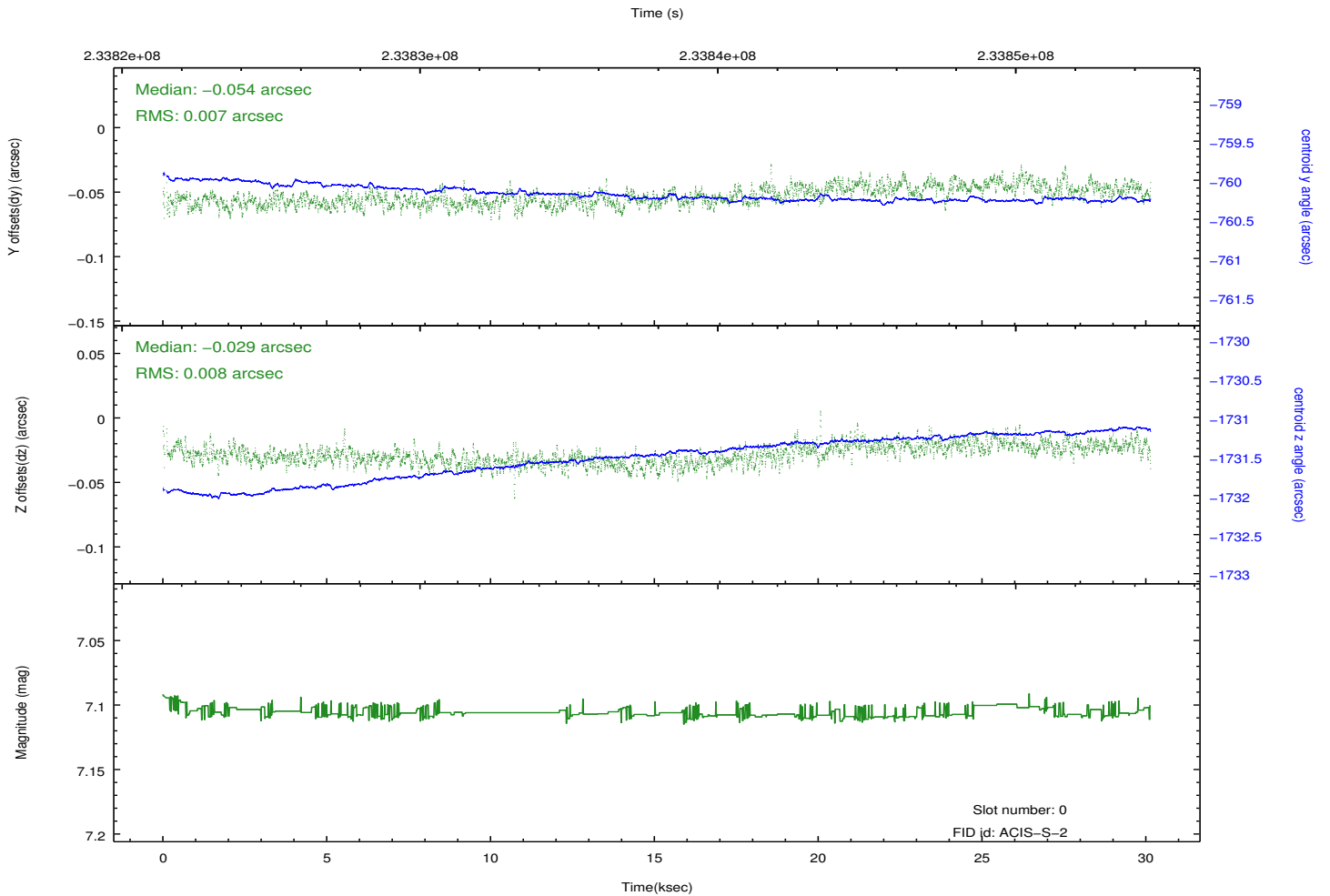
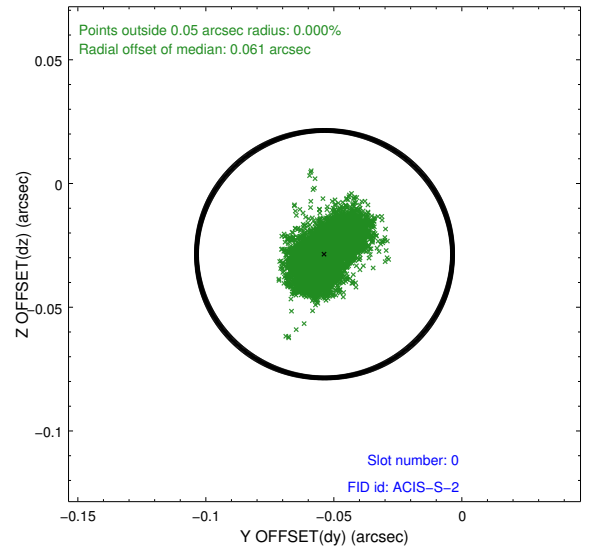
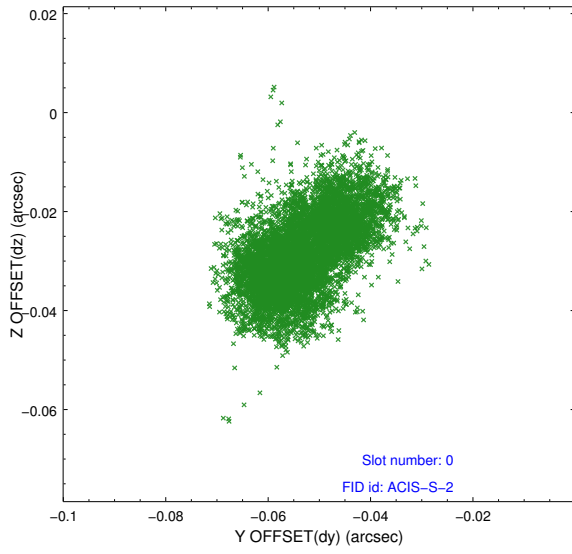


2.4.4 Slot 6

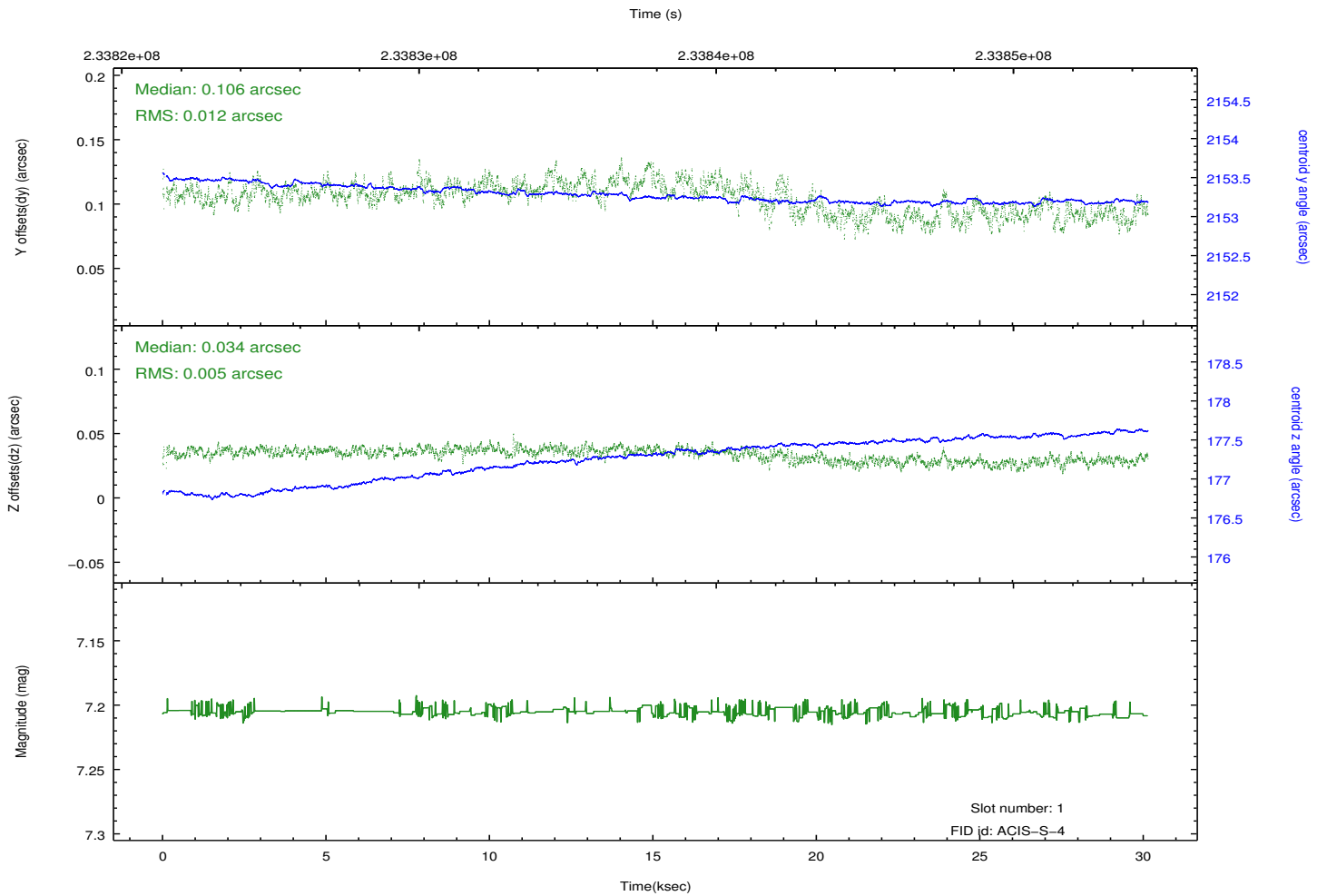
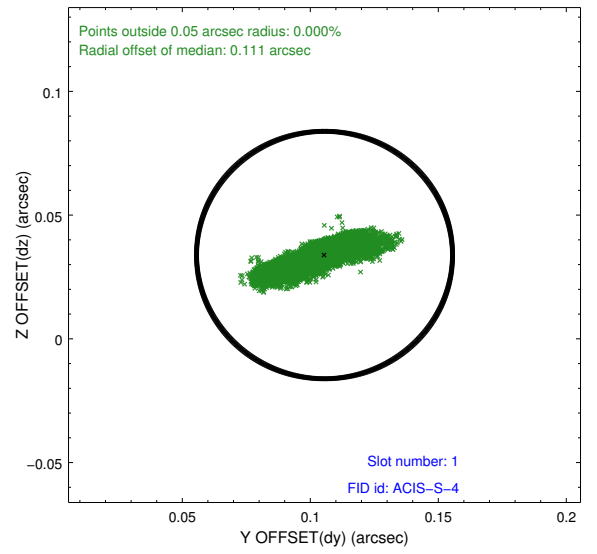
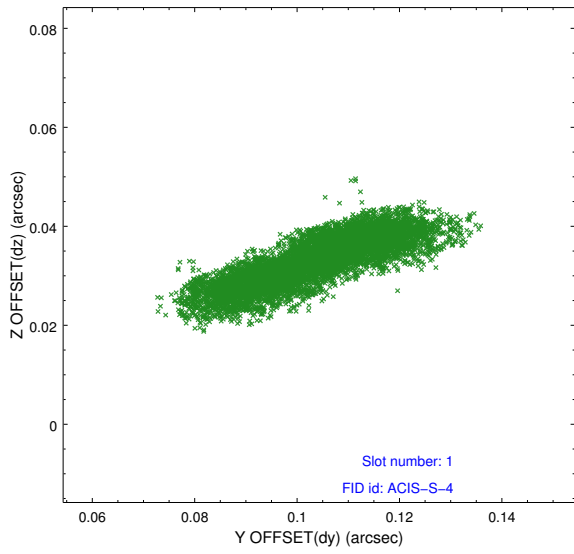


2.5 FID Slots

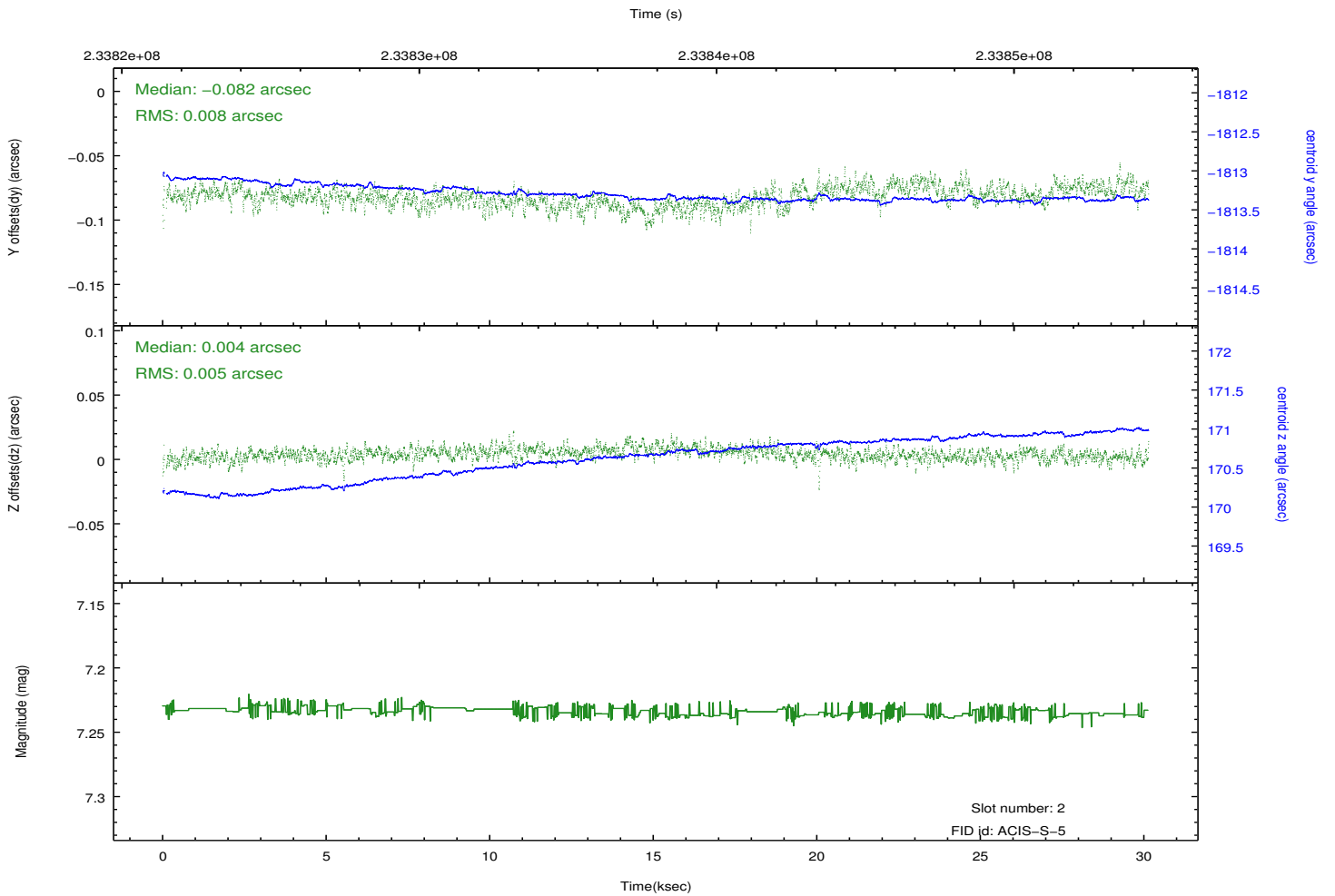
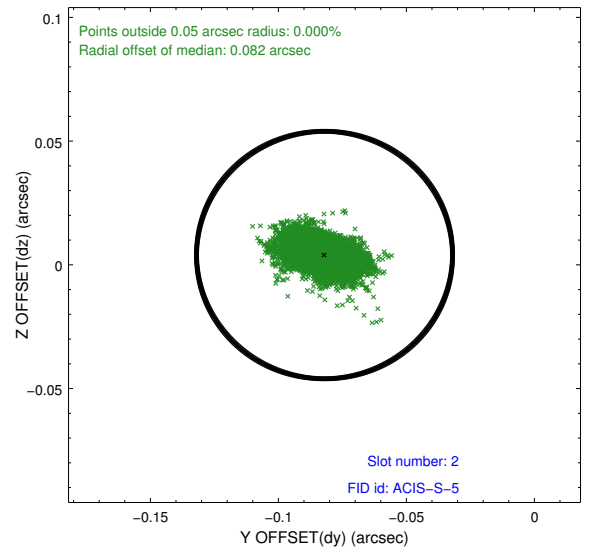
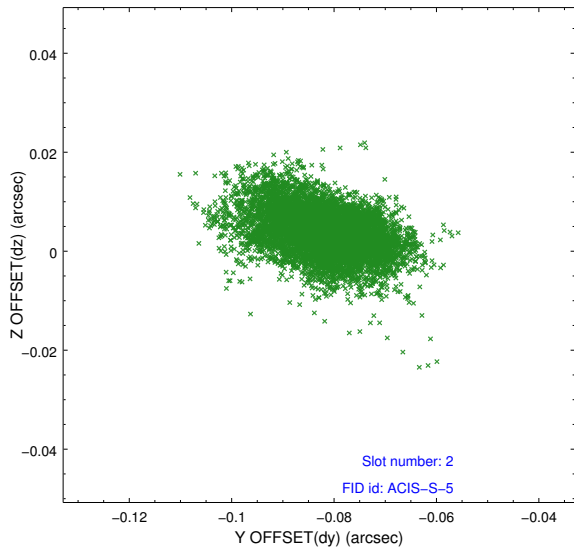
2.5.1 Slot 0



2.5.2 Slot 1



2.5.3 Slot 2



A Summary

A.1 Status

V&V Scientist	Jen Lauer
V&V Date (YYYY-MM-DD)	2013.01.16
V&V Edition	1
V&V Disposition and Status	OK
V&V Charge Time	30.02235

A.2 Comments

Monitor constraint met. Joint Proposal: HST