

V&V Reference Report

L2 ASCDS Version : 8.4.3.1

Observation 6411 - L2 Version 2
Chandra X-Ray Center

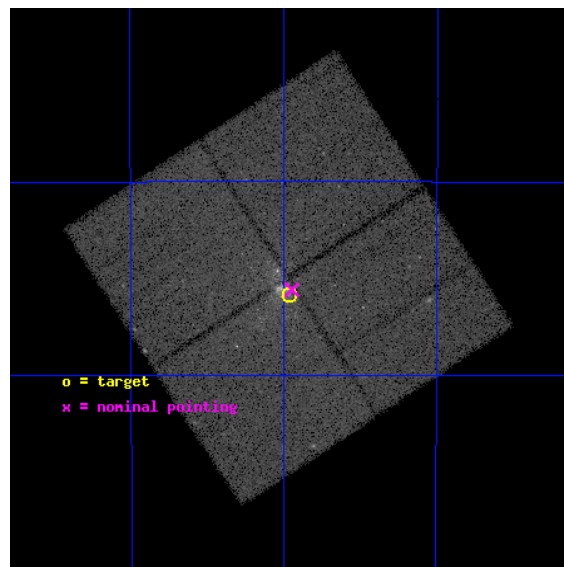
L2 Processing Date : Apr 10 2012

Contents

1	Front	2
2	OBI	3
2.1	OBI	3
2.1.1	Images	3
2.1.2	Bias	3
2.1.3	Parameters	4
2.1.4	Events	4
2.2	Compared Parameters	5
2.3	Aspect	6
2.4	Star Slots	9
2.4.1	Slot 3	9
2.4.2	Slot 4	10
2.4.3	Slot 5	11
2.4.4	Slot 6	12
2.5	FID Slots	13
2.5.1	Slot 0	13
2.5.2	Slot 1	14
2.5.3	Slot 2	15
A	Summary	16
A.1	Status	16
A.2	Comments	16

1 Front

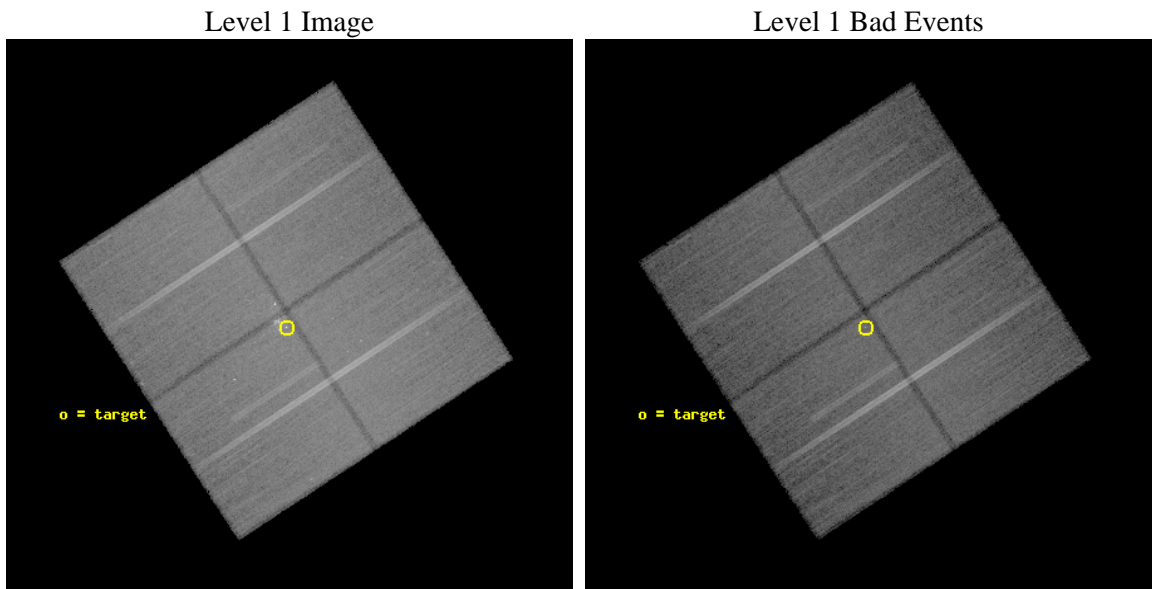
seq_num	200386	Sequence number
obs_id	6411	Observation id
title	Mapping the colliding wind region of the very massive binary WR20a	
observer	Prof. Gregor RAUW	Principal investigator
object	WR20a	Source name
dtcycle	0	
cycle	P	events from which exps? Prim/Second/Both
ra_targ	155.991667	Observer's specified target RA [deg]
dec_targ	-57.763611	Observer's specified target Dec [deg]
ra_nom	155.98683900584	Nominal RA [deg]
dec_nom	-57.759735187287	Nominal Dec [deg]
roll_nom	146.87264963633	Nominal Roll [deg]
revision	2	Processing version of data
ontime	50030.900384784	Sum of GTIs [s]
livetime	49377.209839044	Livetime [s]
ontime0	50030.900384784	Sum of GTIs [s]
ontime1	50021.477483809	Sum of GTIs [s]
ontime2	50030.900384784	Sum of GTIs [s]
ontime3	50030.900384784	Sum of GTIs [s]
l2events	218157	Number of level 2 events



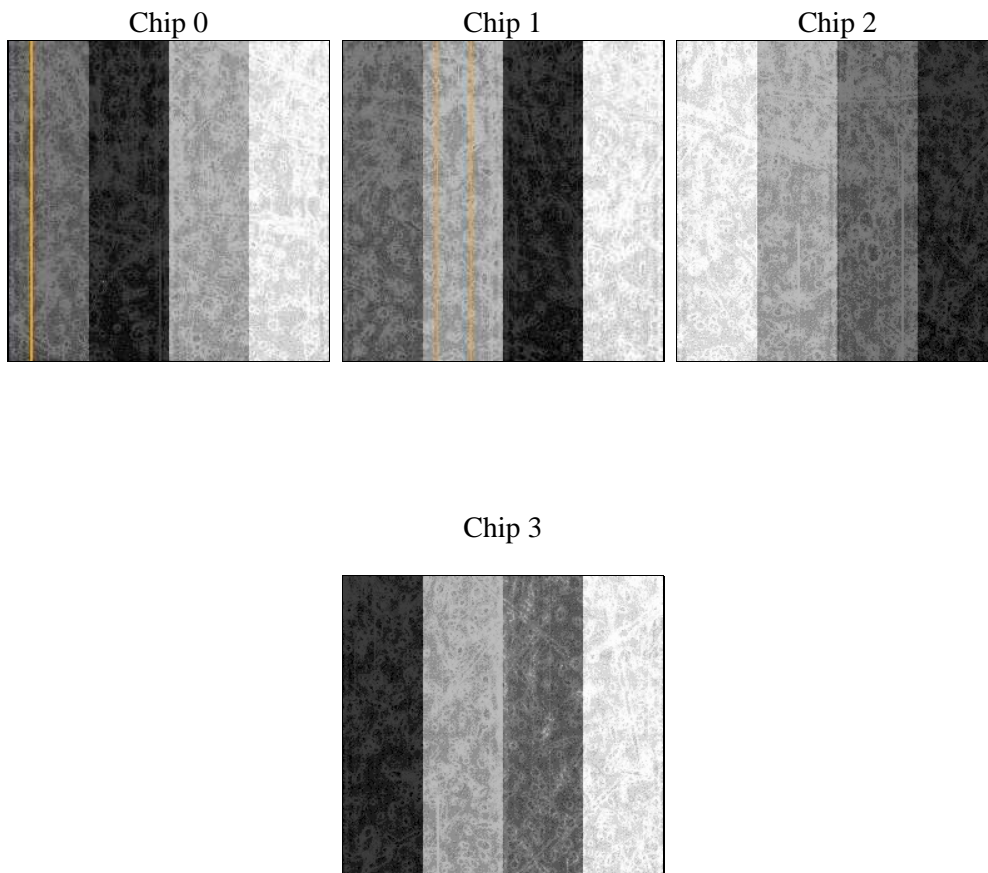
2 OBI

2.1 OBI

2.1.1 Images



2.1.2 Bias



2.1.3 Parameters

obi_num	1	Obi number	sched_exp_time	50000.000000	[s] Scheduled observation exposure time
ascdsver	8.4.3.1	Processing system revision	ontime	50030.900384784	Sum of GTIs [s]
caldbver	4.4.9	 	ontime0	50030.900384784	Sum of GTIs [s]
date	2012-04-10T10:35:40	Date and time of file creation	ontime1	50021.477483809	Sum of GTIs [s]
revision	2	Processing version of data	ontime2	50030.900384784	Sum of GTIs [s]
			ontime3	50030.900384784	Sum of GTIs [s]
			l1events	1813126	Number of level 1 events

2.1.4 Events

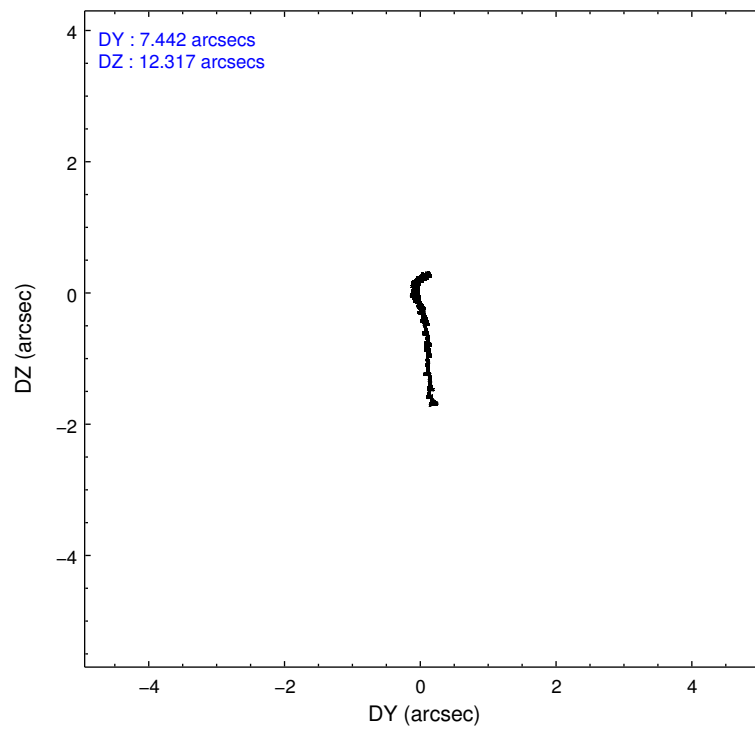
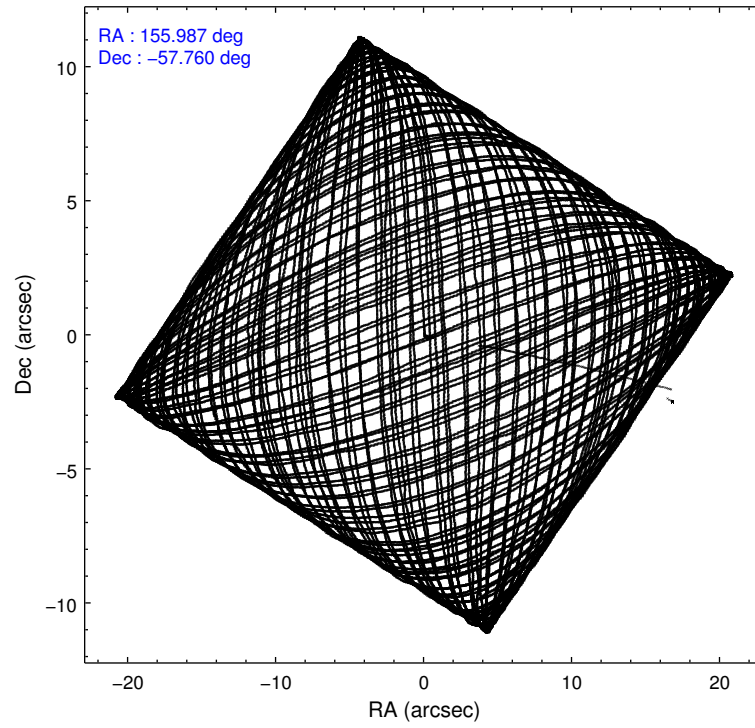
	ccd 0	ccd 1	ccd 2	ccd 3
level 1 events	425940	442840	473655	470691
rejected events	367547	376309	414558	402545
rejected %	86%	84%	87%	85%

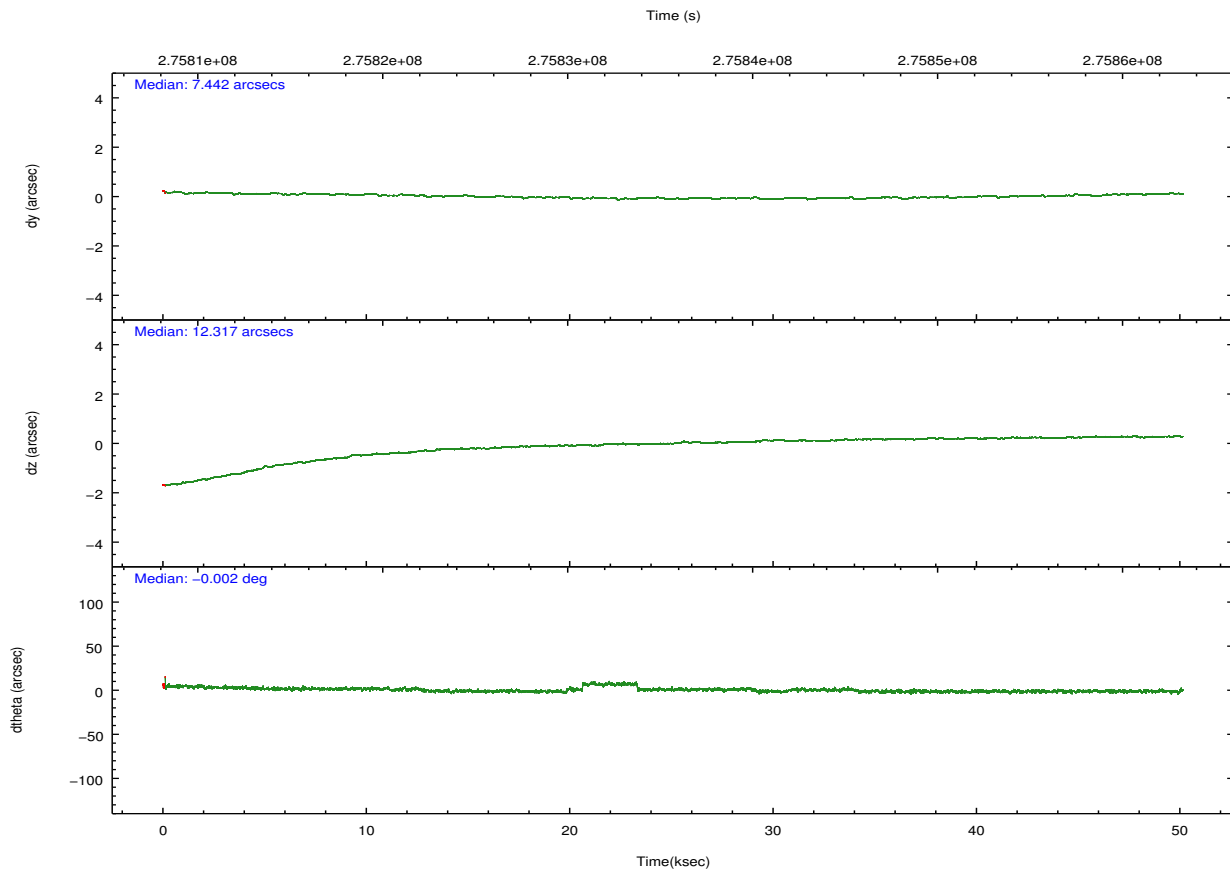
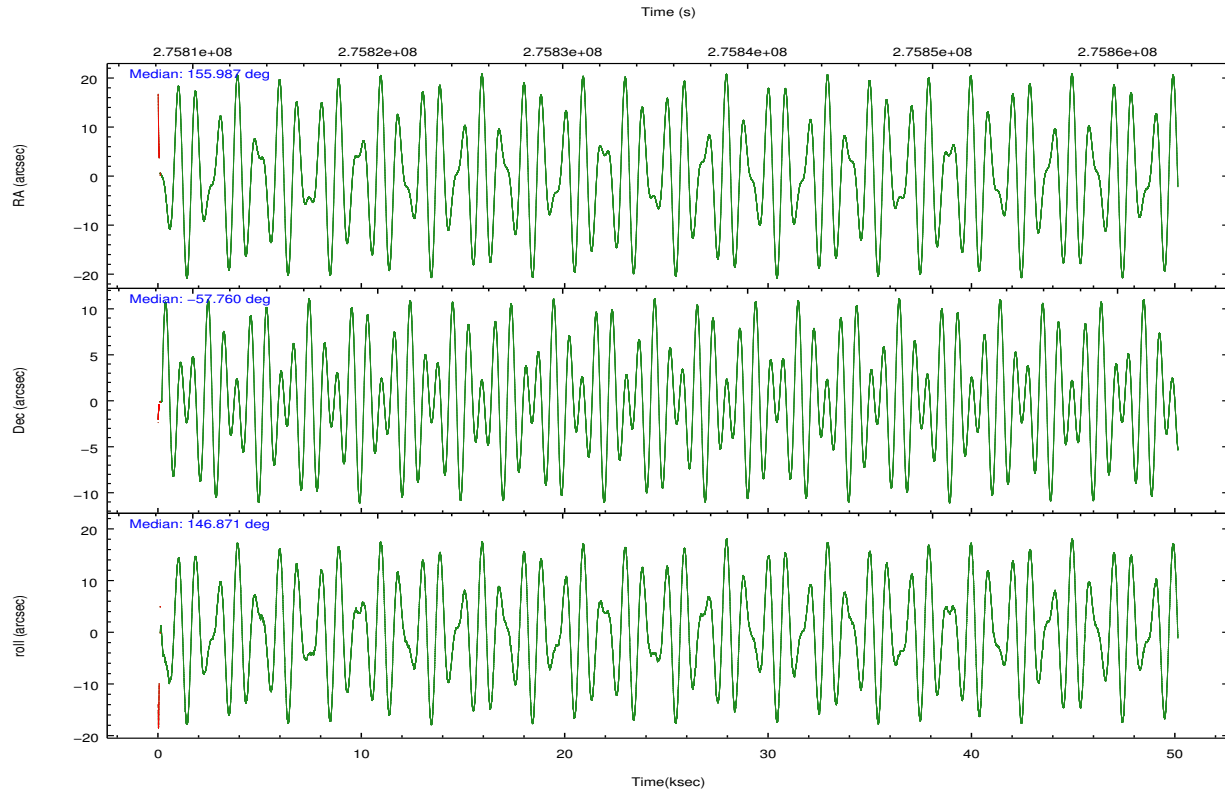
	ccd 0	ccd 1	ccd 2	ccd 3
grade 0 events	26362	29579	28354	35368
	6%	6%	5%	7%
grade 1 events	263	293	359	419
	0%	0%	0%	0%
grade 2 events	12542	14267	12114	12261
	2%	3%	2%	2%
grade 3 events	5614	5981	5144	5773
	1%	1%	1%	1%
grade 4 events	5072	5878	5185	5688
	1%	1%	1%	1%
grade 5 events	18222	19928	17259	20988
	4%	4%	3%	4%
grade 6 events	9663	11776	9223	9911
	2%	2%	1%	2%
grade 7 events	348202	355138	396017	380283
	81%	80%	83%	80%

2.2 Compared Parameters

Parameter	Planned	Actual	Parameter	Planned	Actual
Instrument	ACIS	ACIS	Obspar format version number	7	7
Detector	ACIS-0123	ACIS-0123	Obspar file type	PREDICTED	ACTUAL
Grating	NONE	NONE	Obspar update status	NONE	UPDATED
Data mode	FAINT	FAINT	Number of optional ACIS chips dropped	0	0
Observation mode	POINTING	POINTING	On-chip summing requested	N	N
[deg] Pointing RA	156.038118	155.9868390058372	Subarray requested	NONE	NONE
[deg] Pointing Dec	-57.761122	-57.75973518728691	Alternating exposures requested	N	N
[deg] Pointing Roll	146.707350	146.8726496363328	[s] Primary exposure time	0.000000	3.1
[mm] SIM focus pos	-0.782348	-0.7809083437167272			
[mm] SIM defocus	0	0.001439871863259334			
[mm] SIM translation stage pos	-233.592463	-233.5874344608287			
[mm] SIM translation stage offset	0	-0.005018542100998502			
Phase constraints	Y	Y			
[d] Phase period	3.686000	3.686000			
[d] Phase epoch (MJD)	53124.069000	53124.069000			
Phase start	0.350000	0.350000			
Phase end	0.500000	0.500000			
Phase start error	0.030000	0.030000			
Phase end error	0.030000	0.030000			
[s] Observation start time (MET)	275810776.184000	275809580.75594			
Observation start date	2006-09-28T06:05:11	2006-09-28T05:46:20			
[s] Observation end time (MET)	275860776.184000	275861683.0459			
Observation end date	2006-09-28T19:58:31	2006-09-28T20:14:43			
Read mode	TIMED	TIMED			

2.3 Aspect



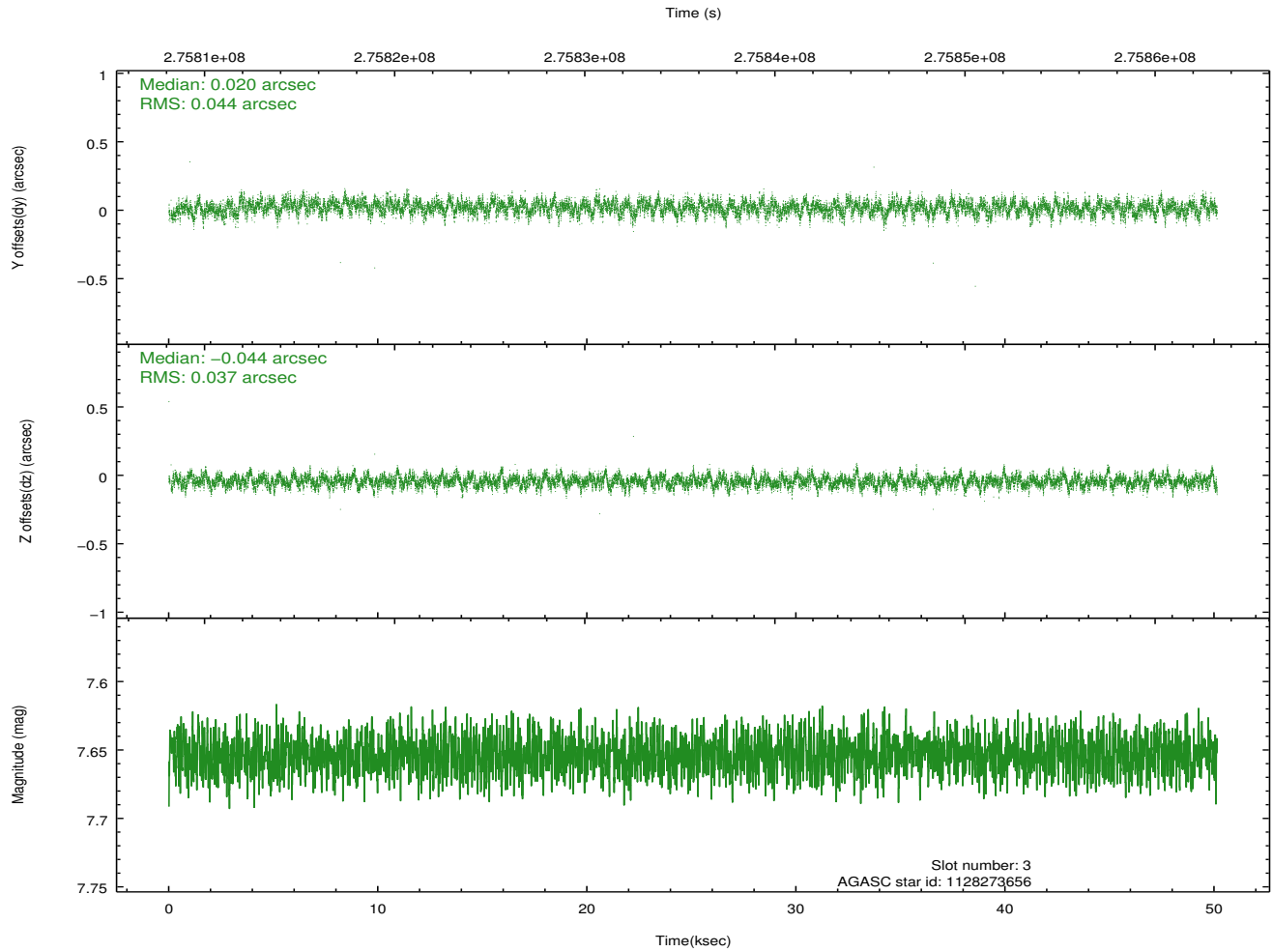
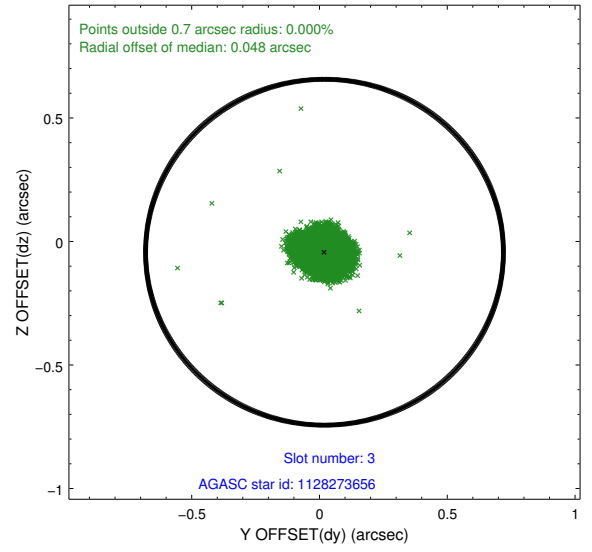
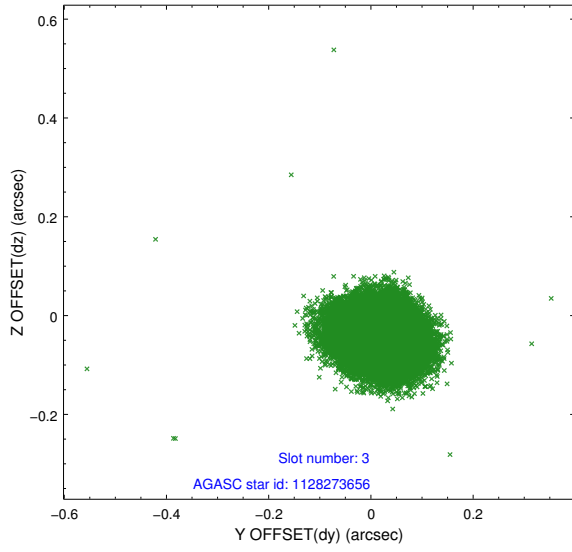


Slot Statistics

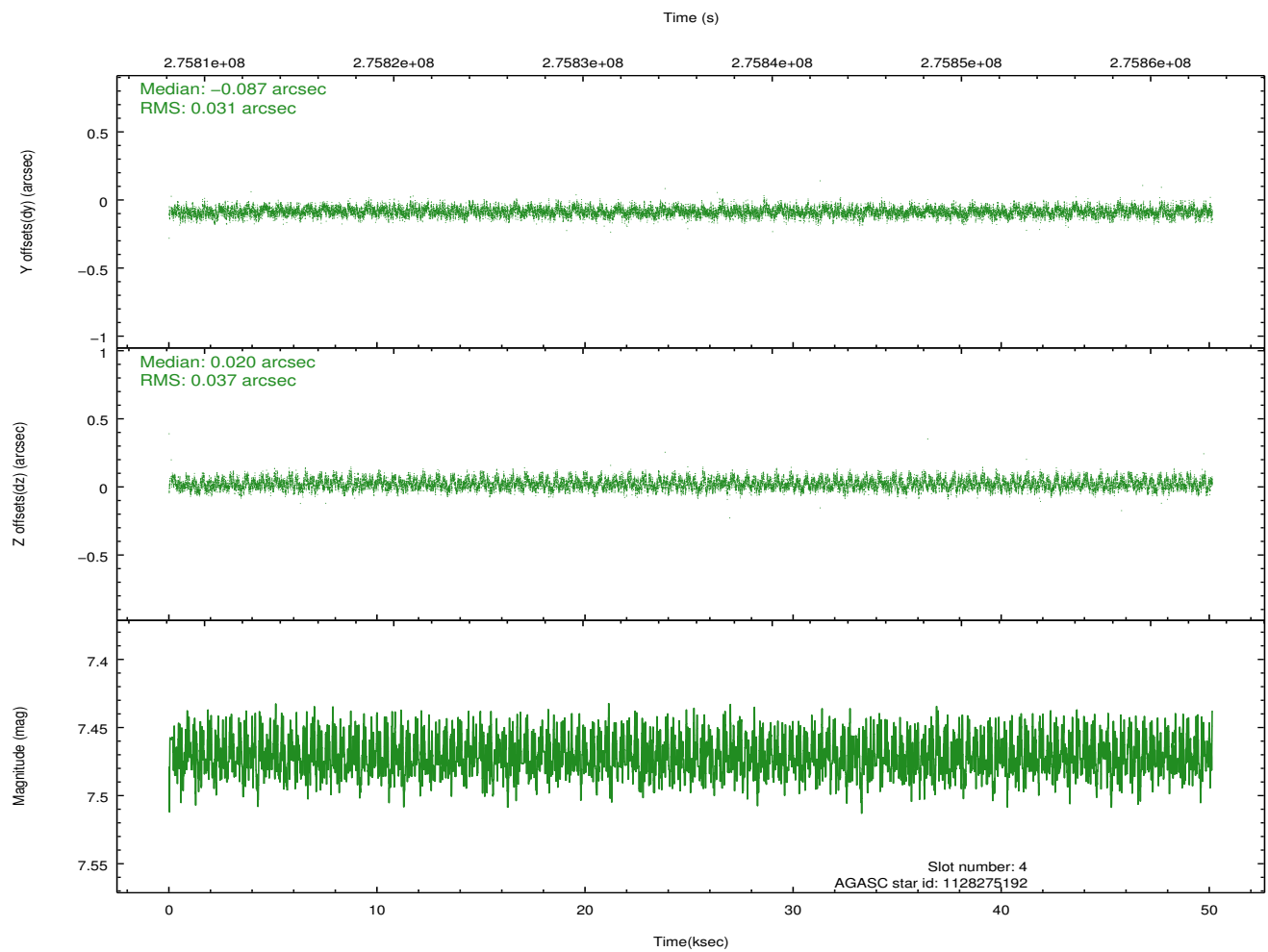
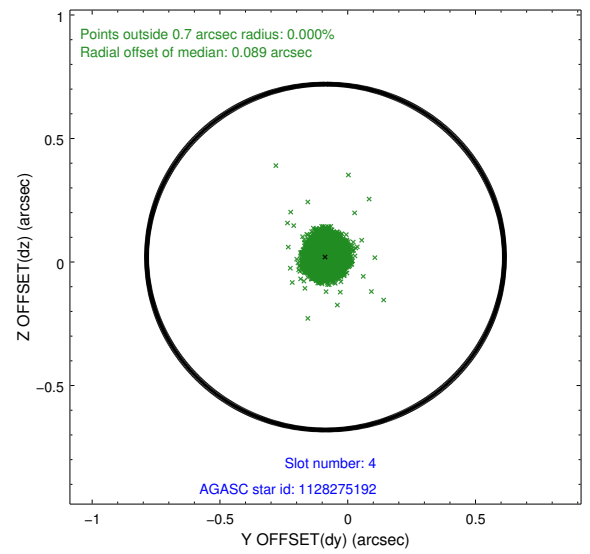
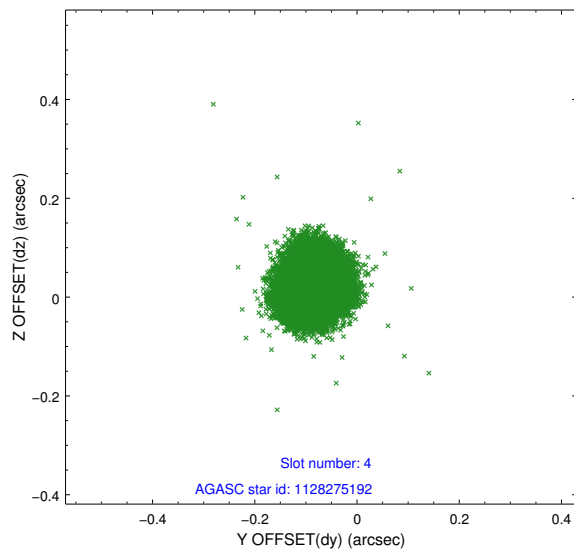
	status	id	mag	n_pts	med_dy	med_dz	dr1
	FID	ACIS-I-1	7.24	12216	-0.053	-0.007	0.016
	FID	ACIS-I-2	7.15	12217	-0.158	-0.065	0.013
	FID	ACIS-I-4	7.17	12217	0.114	0.137	0.016
	GUIDE	1128273656	7.65	24430	0.020	-0.044	0.061
	GUIDE	1128275192	7.47	24425	-0.087	0.020	0.052
	GUIDE	1128406664	7.20	24433	0.059	-0.027	0.052
	GUIDE	1128797648	8.27	24426	0.008	0.047	0.063
0.000	0.000	0.000	0.000000	0.000000	0.00	0.00	

2.4 Star Slots

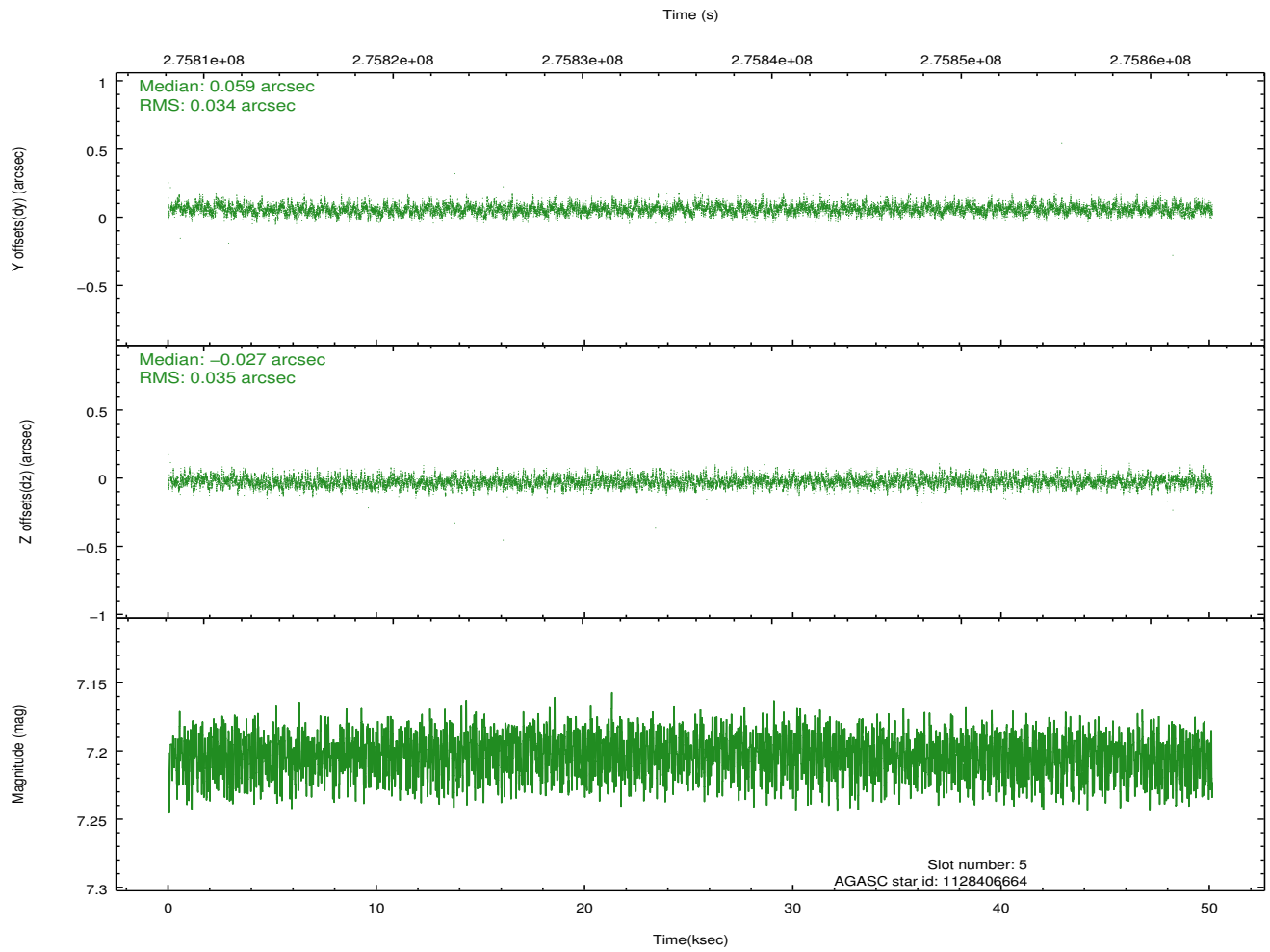
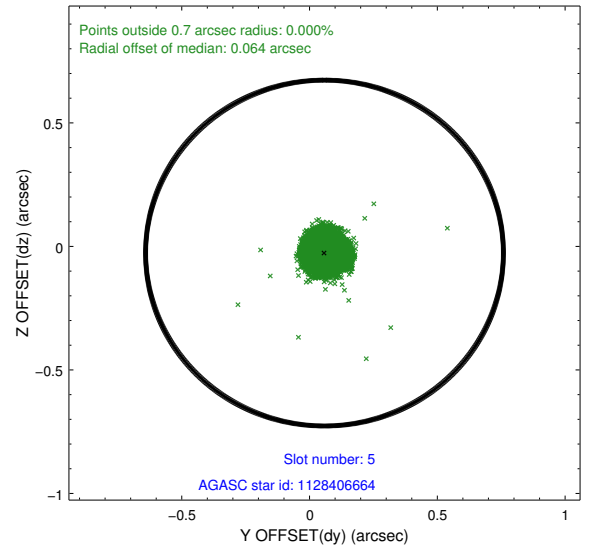
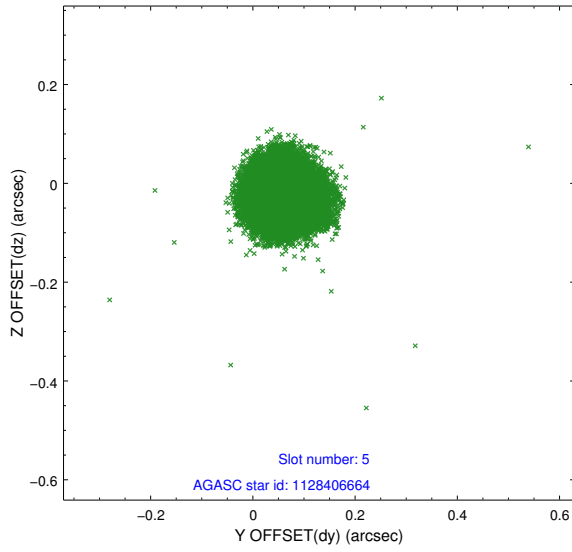
2.4.1 Slot 3



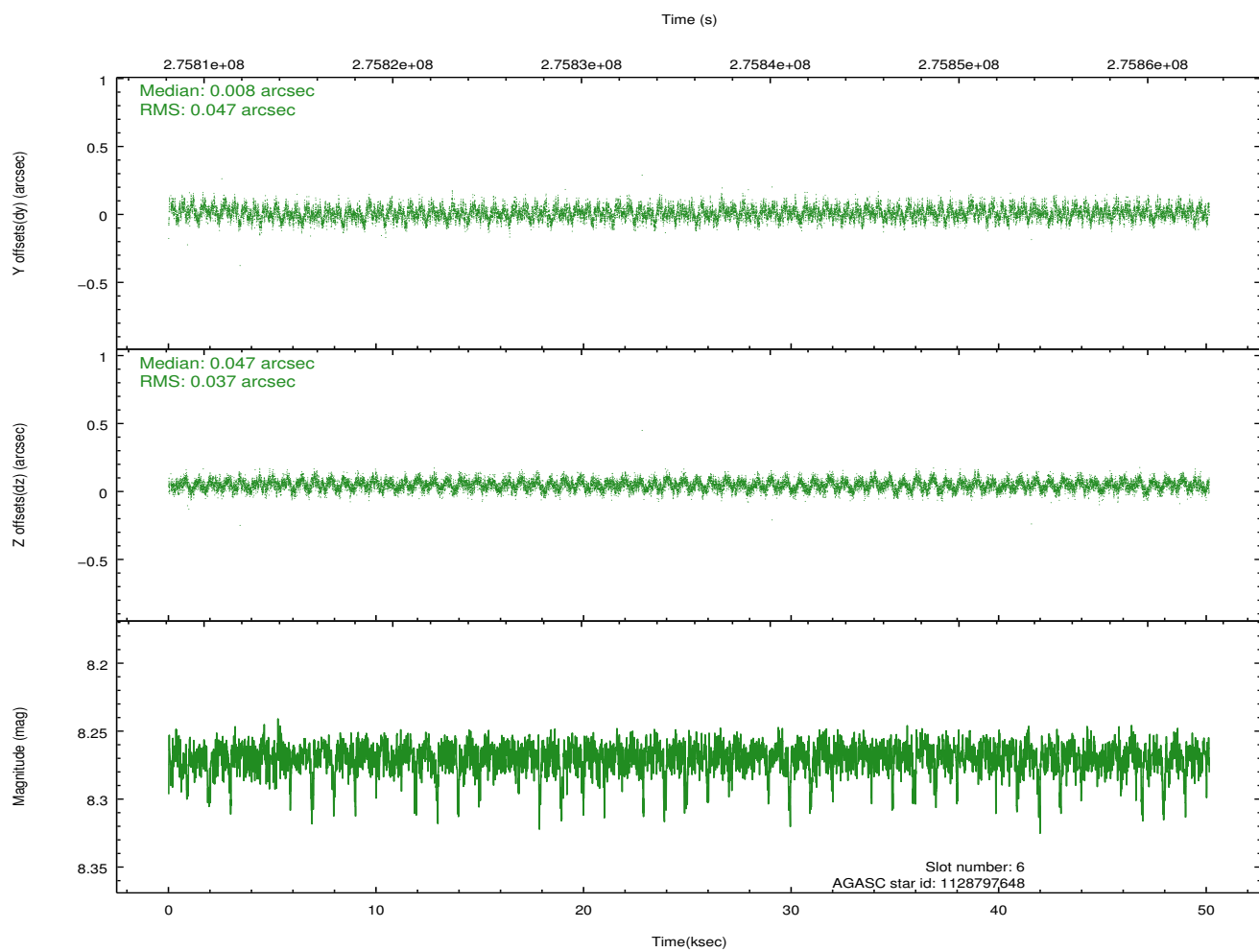
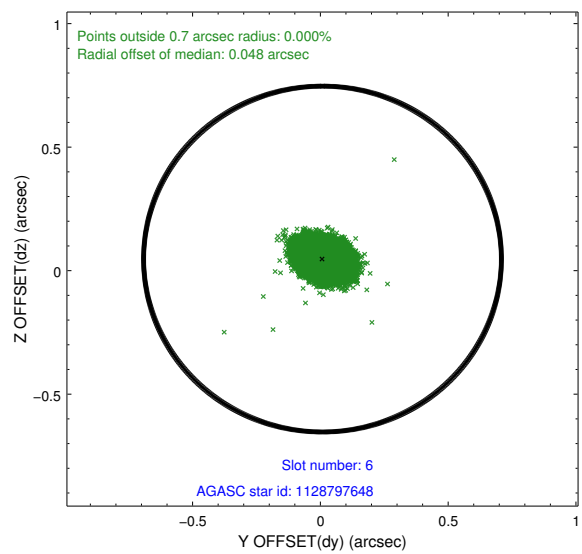
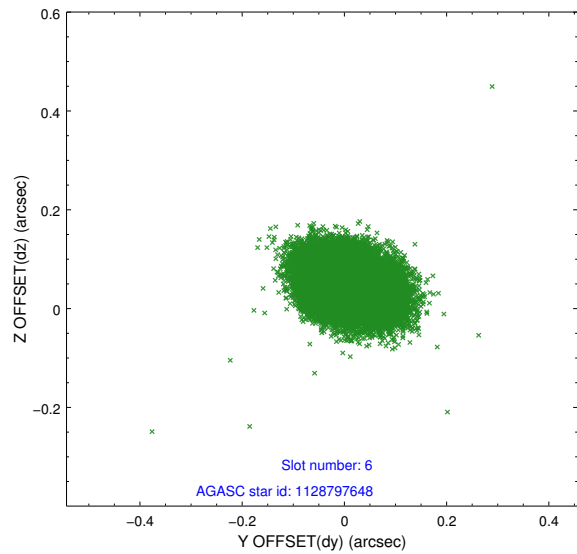
2.4.2 Slot 4



2.4.3 Slot 5

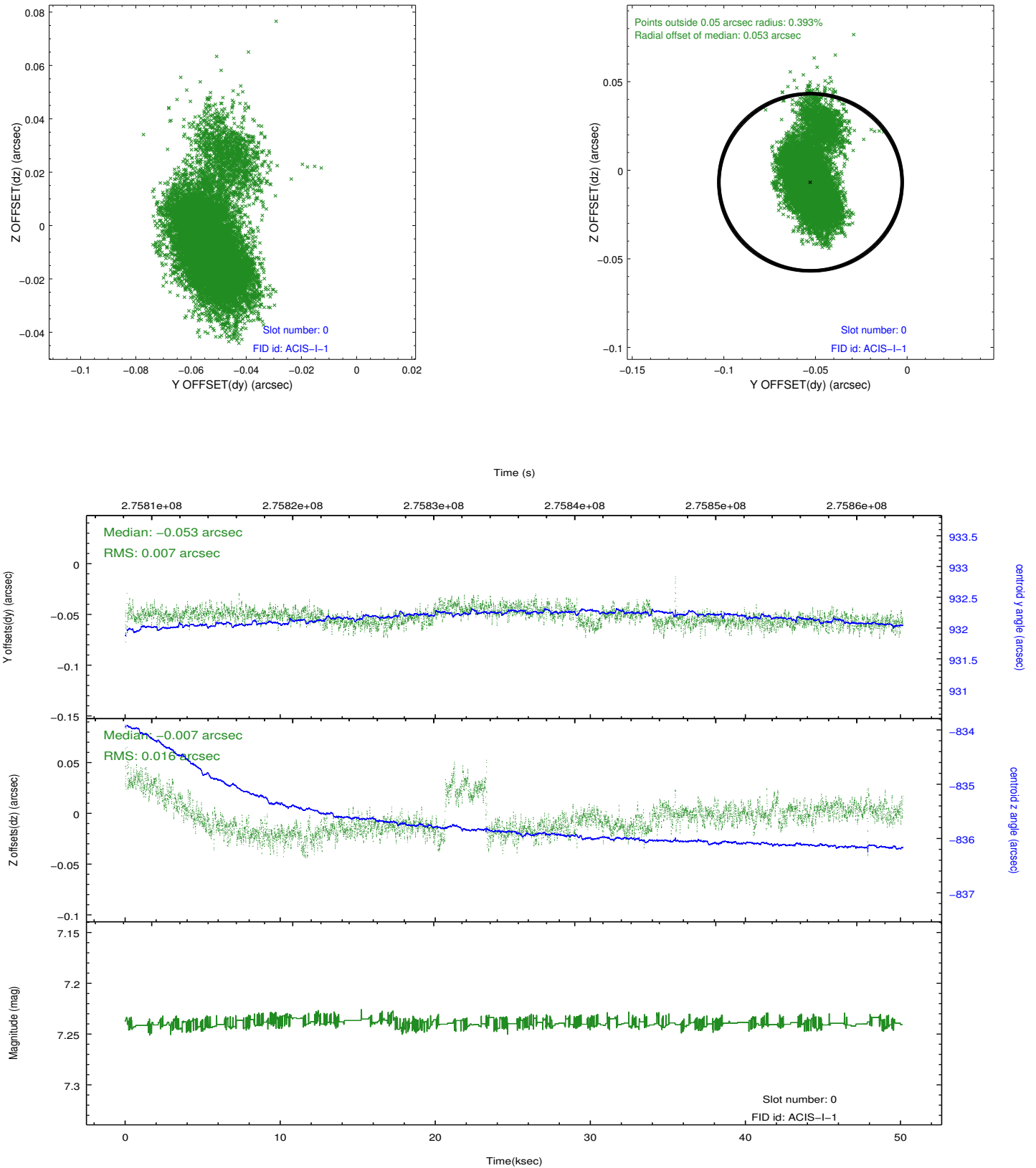


2.4.4 Slot 6

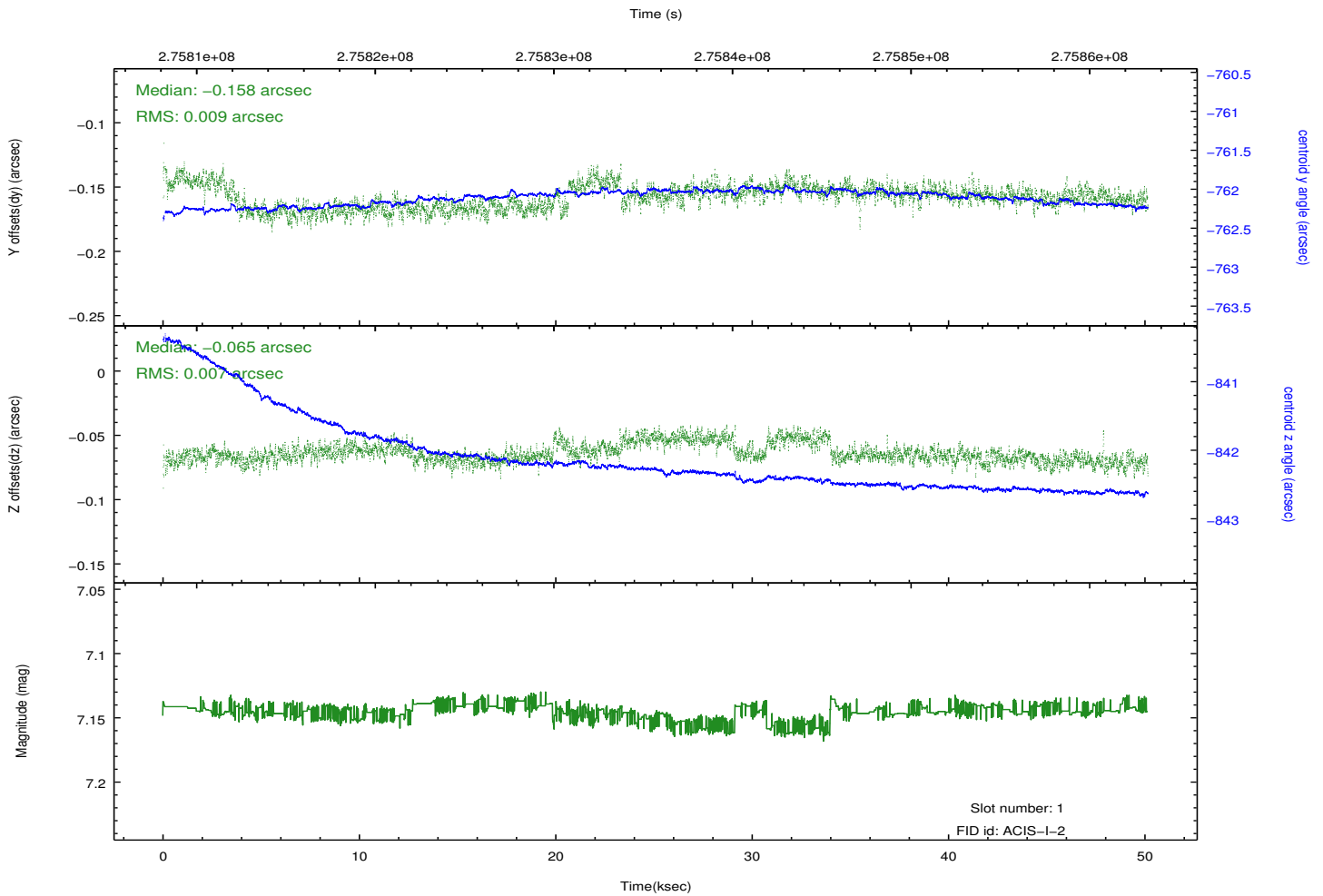
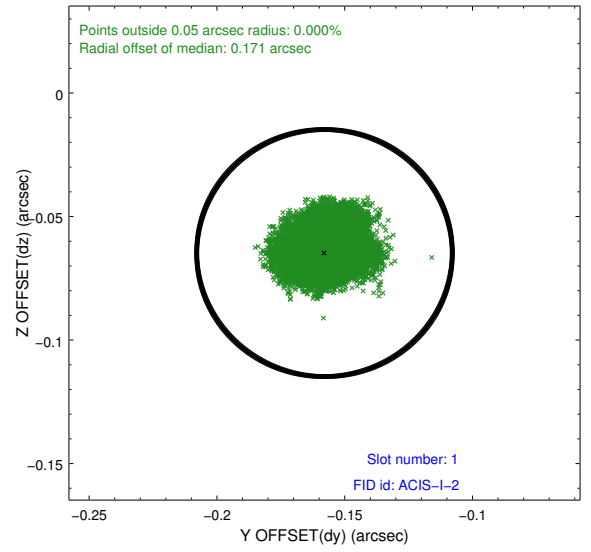
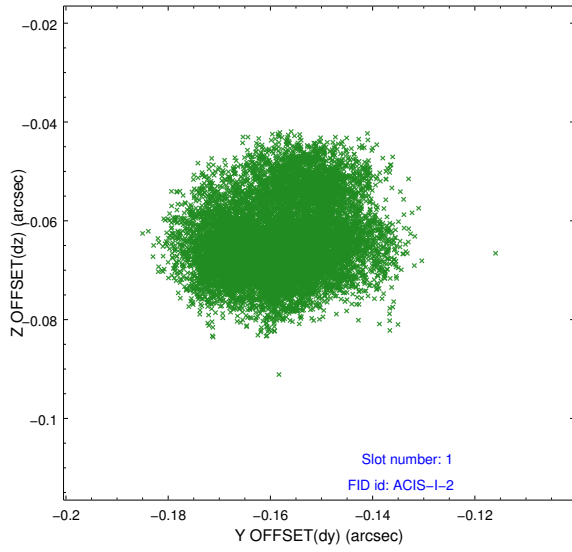


2.5 FID Slots

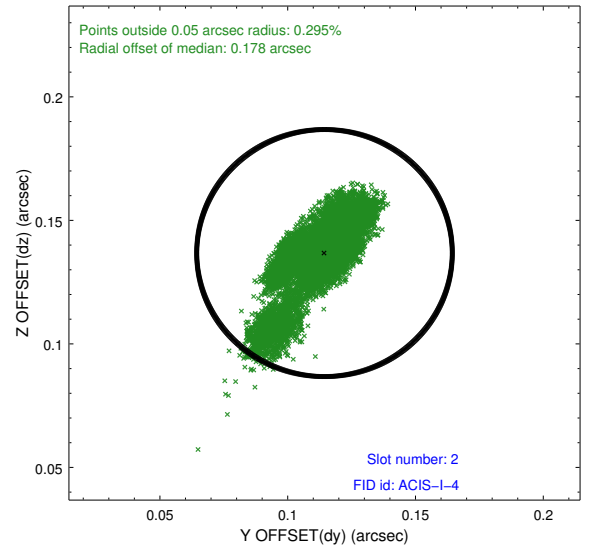
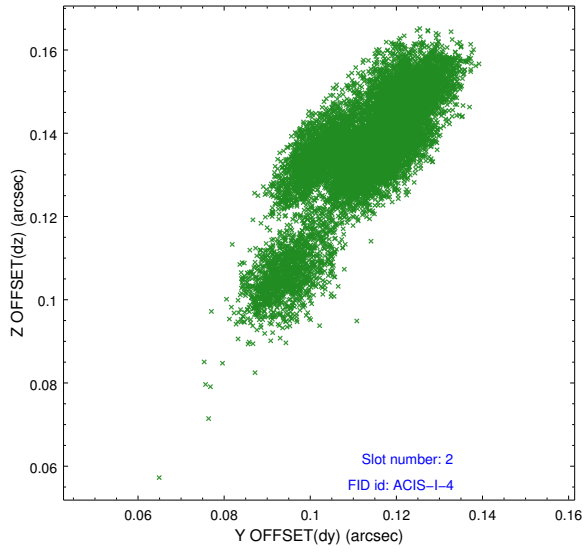
2.5.1 Slot 0



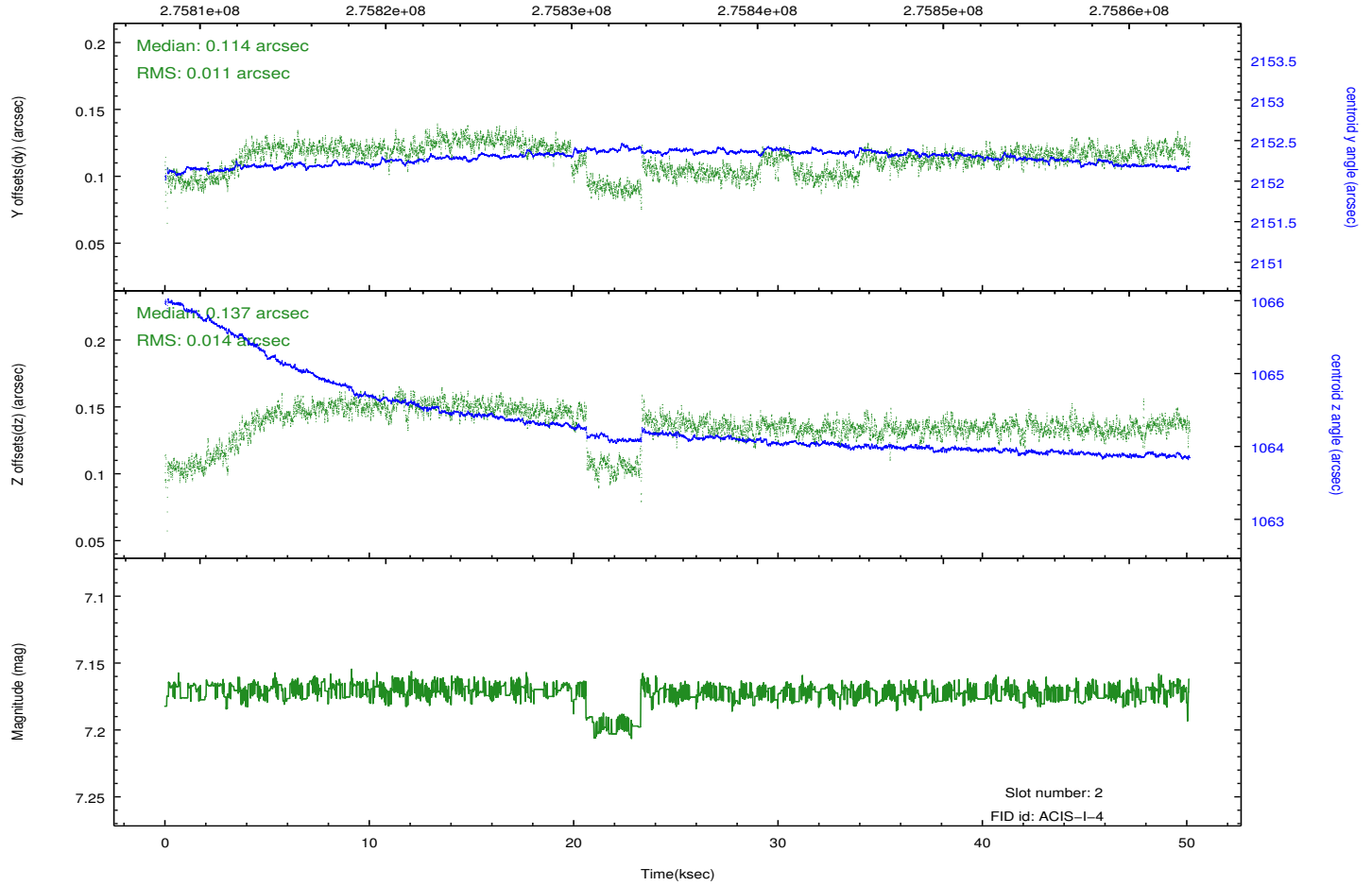
2.5.2 Slot 1



2.5.3 Slot 2



Time (s)



A Summary

A.1 Status

V&V Scientist	Jen Lauer
V&V Date (YYYY-MM-DD)	2012.04.10
V&V Edition	1
V&V Disposition and Status	OK
V&V Charge Time	50.0309003

A.2 Comments

Monitor constraint met. Phase constraint met.