

V&V Reference Report

L2 ASCDS Version : 8.4.3

Observation 6911 - L2 Version 2
Chandra X-Ray Center

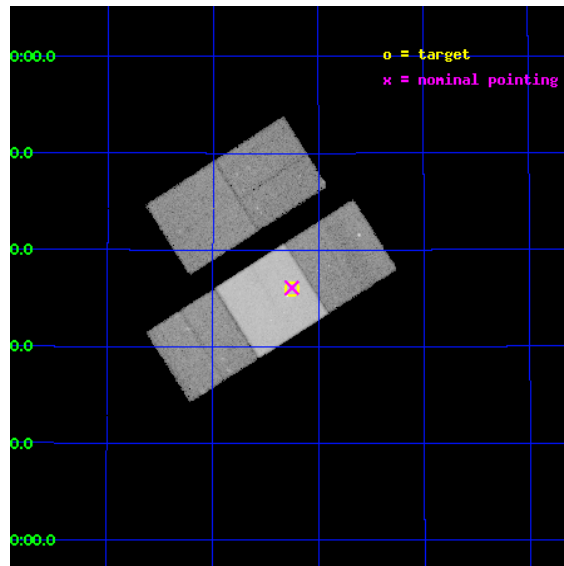
L2 Processing Date : Mar 28 2012

Contents

1	Front	2
2	OBI	3
2.1	OBI	3
2.1.1	Images	3
2.1.2	Bias	3
2.1.3	Parameters	4
2.1.4	Events	4
2.2	Compared Parameters	5
2.3	Aspect	6
2.4	Star Slots	9
2.4.1	Slot 3	9
2.4.2	Slot 4	10
2.4.3	Slot 5	11
2.4.4	Slot 6	12
2.4.5	Slot 7	13
2.5	FID Slots	14
2.5.1	Slot 0	14
2.5.2	Slot 1	15
2.5.3	Slot 2	16
A	Summary	17
A.1	Status	17
A.2	Comments	17

1 Front

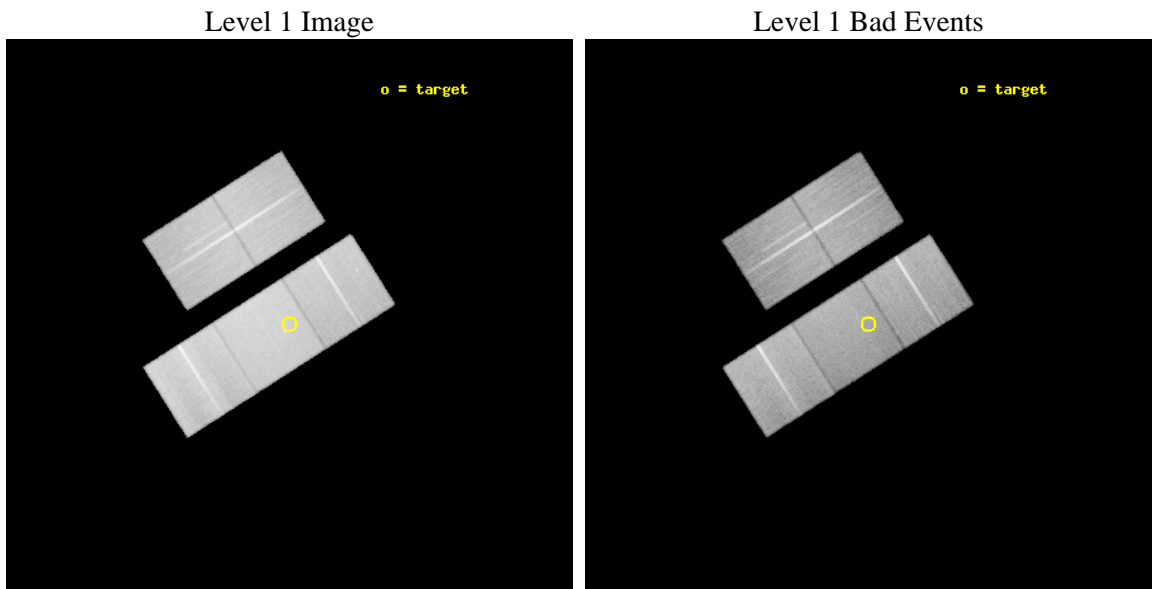
seq_num	701326	Sequence number
obs_id	6911	Observation id
title	A Chandra Study of Optical Hot-Spots in Two Nearby FR II Radio Galaxies	Proposal title
observer	Dr Stephen Murray	Principal investigator
object	3C 285	Source name
dtycycle	0	
cycle	P	events from which exps? Prim/Second/Both
ra_targ	200.31302	Observer's specified target RA [deg]
dec_targ	42.599619	Observer's specified target Dec [deg]
ra_nom	200.31280119887	Nominal RA [deg]
dec_nom	42.601690499544	Nominal Dec [deg]
roll_nom	147.57532552317	Nominal Roll [deg]
revision	2	Processing version of data
ontime	40148.099922776	Sum of GTIs [s]
livetime	39623.535440684	Livetime [s]
ontime2	40138.676941991	Sum of GTIs [s]
ontime3	40141.817942262	Sum of GTIs [s]
ontime6	40148.099922776	Sum of GTIs [s]
ontime7	40148.099922776	Sum of GTIs [s]
ontime8	40144.958922535	Sum of GTIs [s]
l2events	338450	Number of level 2 events



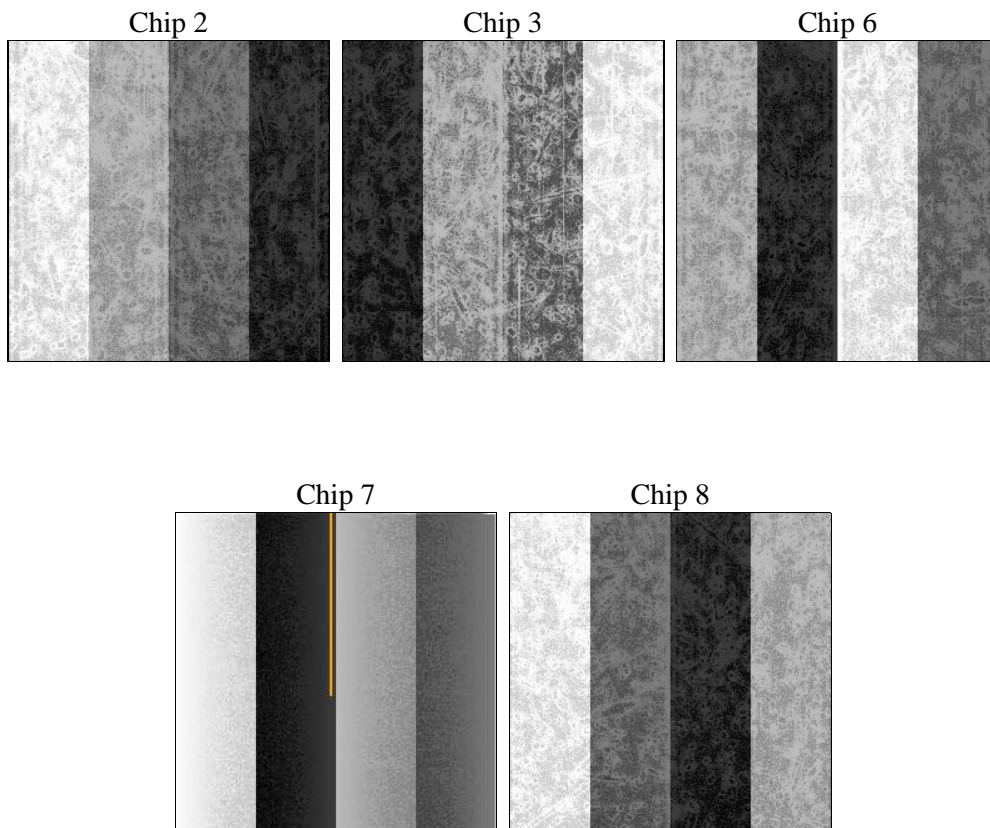
2 OBI

2.1 OBI

2.1.1 Images



2.1.2 Bias



2.1.3 Parameters

obi_num	0	Obi number	sched_exp_time	39997.935000	[s] Scheduled observation exposure time
ascdsver	8.4.3	Processing system revision	ontime	40148.099922776	Sum of GTIs [s]
caldsver	4.4.8	 	ontime2	40138.676941991	Sum of GTIs [s]
date	2012-03-28T06:38:09	Date and time of file creation	ontime3	40141.817942262	Sum of GTIs [s]
revision	2	Processing version of data	ontime6	40148.099922776	Sum of GTIs [s]
			ontime7	40148.099922776	Sum of GTIs [s]
			ontime8	40144.958922535	Sum of GTIs [s]
			l1events	2013912	Number of level 1 events

2.1.4 Events

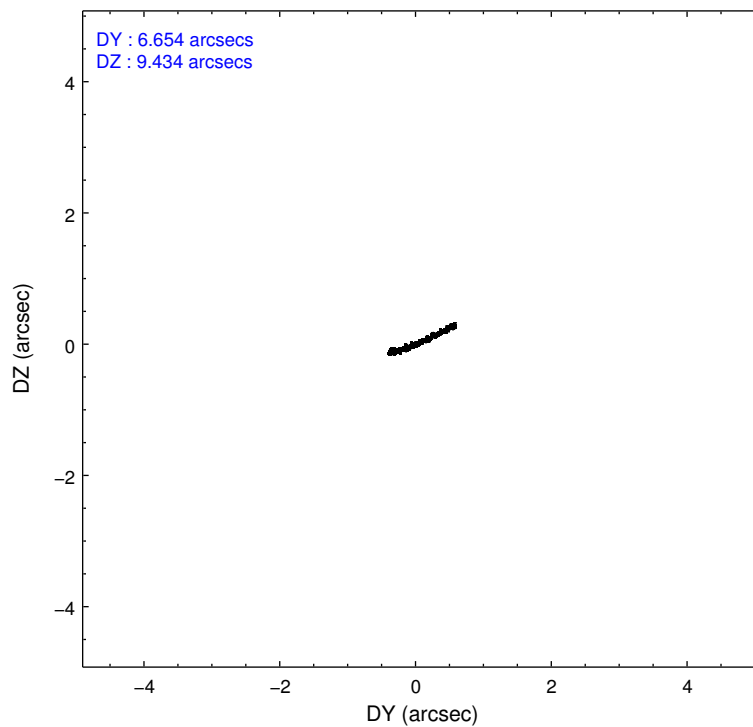
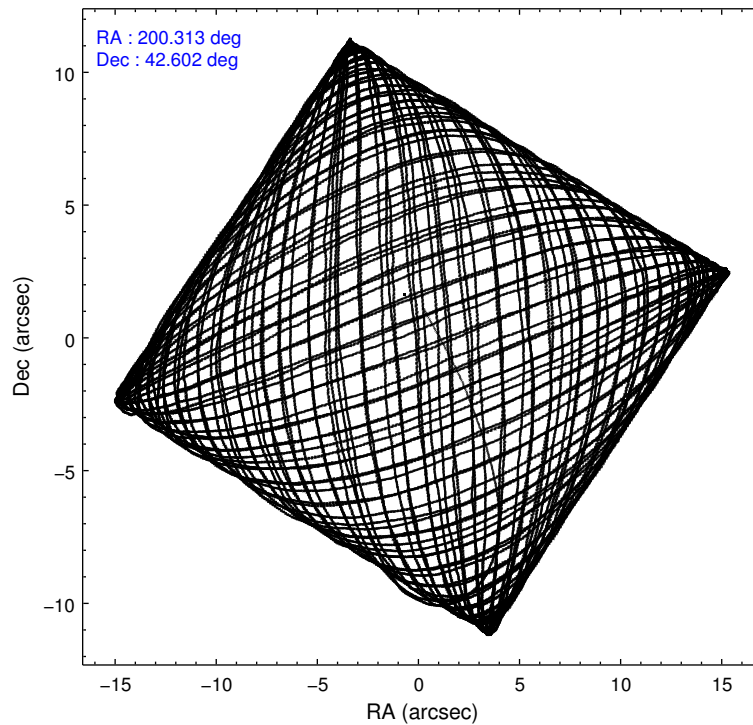
	ccd 2	ccd 3	ccd 6	ccd 7	ccd 8
level 1 events	355227	348118	368559	485088	456920
rejected events	315888	308201	327099	289065	361018
rejected %	88%	88%	88%	59%	79%

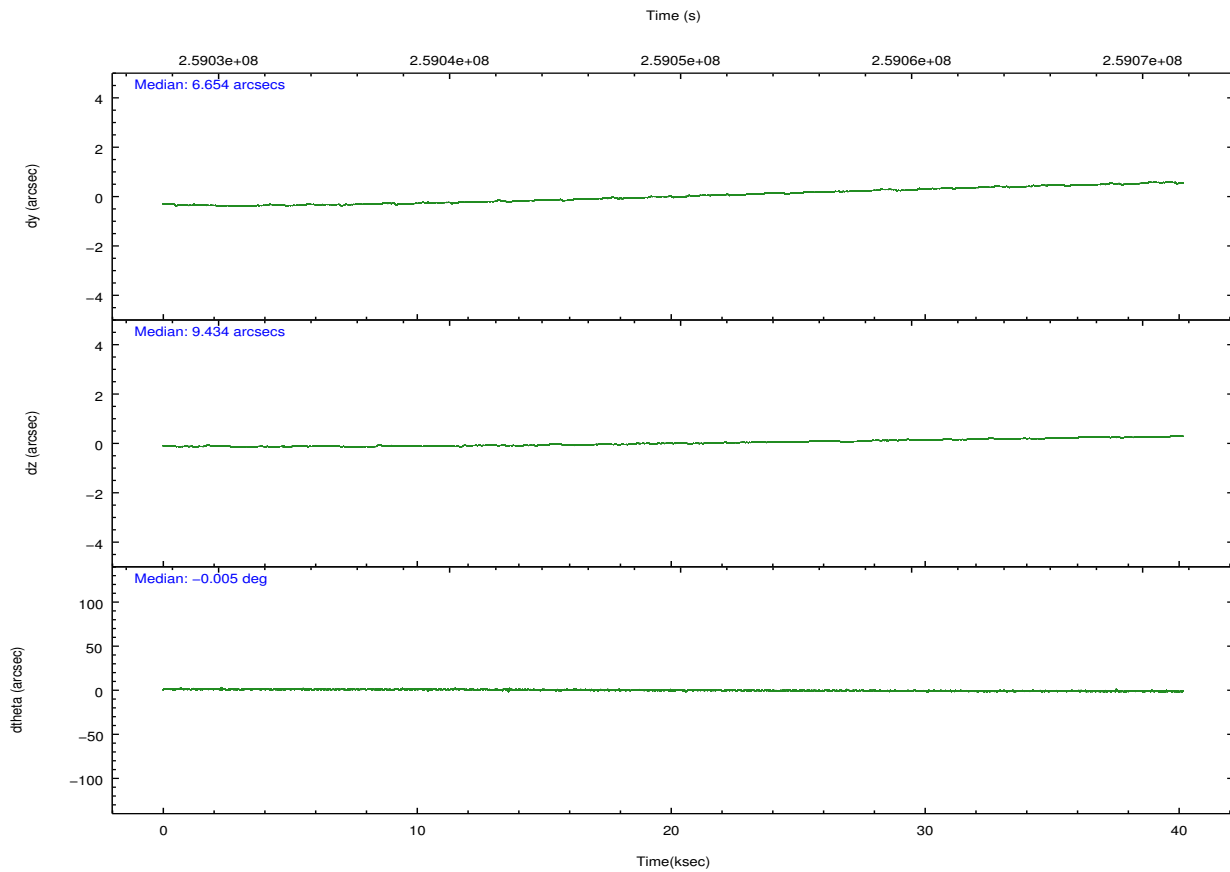
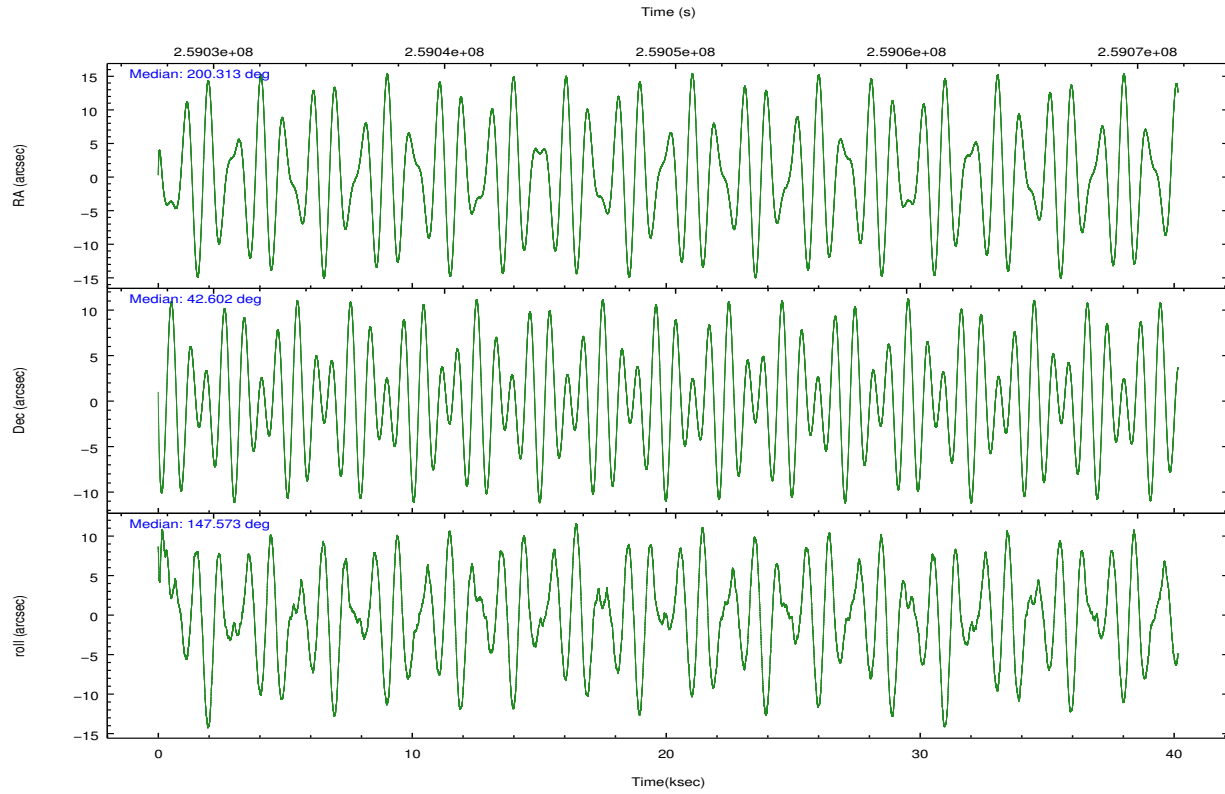
	ccd 2	ccd 3	ccd 6	ccd 7	ccd 8
grade 0 events	17749	17337	16228	17599	30549
	4%	4%	4%	3%	6%
grade 1 events	194	236	167	465	322
	0%	0%	0%	0%	0%
grade 2 events	8150	8010	9378	40005	21728
	2%	2%	2%	8%	4%
grade 3 events	3824	4065	3985	17080	10270
	1%	1%	1%	3%	2%
grade 4 events	3772	3906	3964	16947	9654
	1%	1%	1%	3%	2%
grade 5 events	13148	15834	16524	45487	22073
	3%	4%	4%	9%	4%
grade 6 events	6534	7264	8609	107940	25291
	1%	2%	2%	22%	5%
grade 7 events	301856	291466	309704	239565	337033
	84%	83%	84%	49%	73%

2.2 Compared Parameters

Parameter	Planned	Actual	Parameter	Planned	Actual
Instrument	ACIS	ACIS	Obspar format version number	7	7
Detector	ACIS-23678	ACIS-23678	Obspar file type	PREDICTED	ACTUAL
Grating	NONE	NONE	Obspar update status	NONE	UPDATED
Data mode	VFAINT	VFAINT	Number of optional ACIS chips dropped	0	0
Observation mode	POINTING	POINTING	On-chip summing requested	N	N
[deg] Pointing RA	200.349787	200.3128011988698	Subarray requested	NONE	NONE
[deg] Pointing Dec	42.600903	42.60169049954352	Alternating exposures requested	N	N
[deg] Pointing Roll	147.393667	147.5753255231724	[s] Primary exposure time	0.000000	3.1
[mm] SIM focus pos	-0.684267	-0.6828225247311905			
[mm] SIM defocus	0	0.001444936568705701			
[mm] SIM translation stage pos	-190.132523	-190.1400660498719			
[mm] SIM translation stage offset	0	0.00754346686406393			
[s] Observation start time (MET)	259029750.184000	259028404.50831			
Observation start date	2006-03-18T00:41:25	2006-03-18T00:20:04			
[s] Observation end time (MET)	259069748.184000	259069962.11024			
Observation end date	2006-03-18T11:48:03	2006-03-18T11:52:42			
Read mode	TIMED	TIMED			

2.3 Aspect



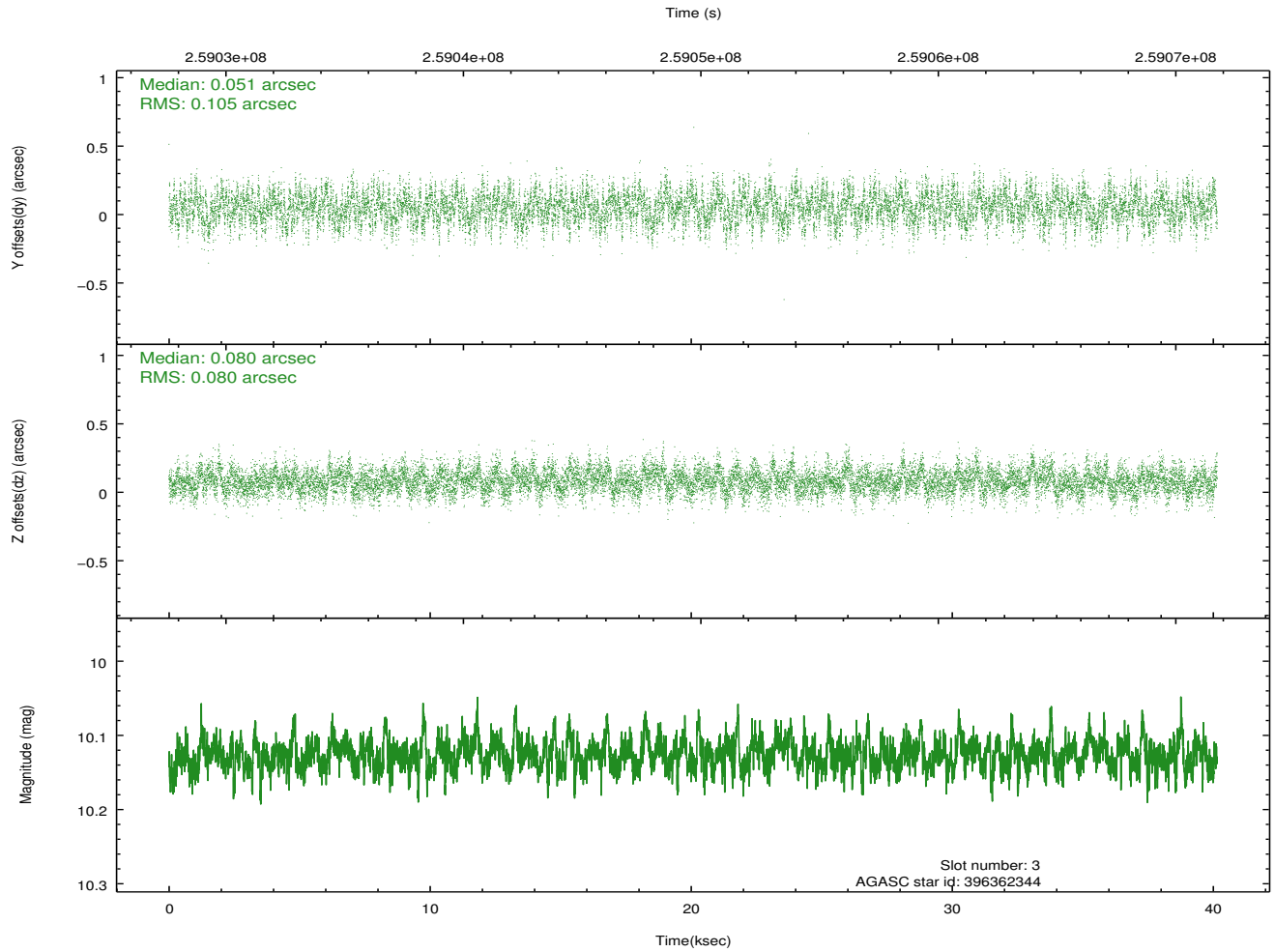
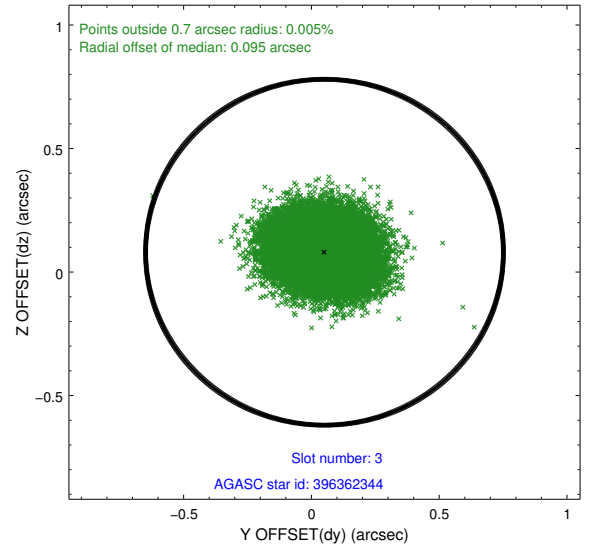
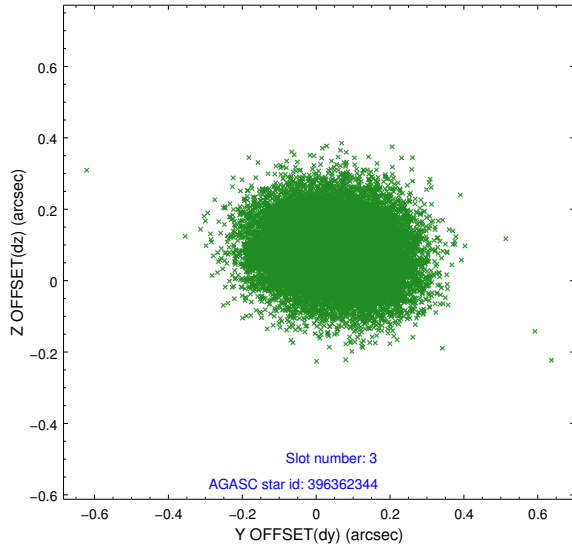


Slot Statistics

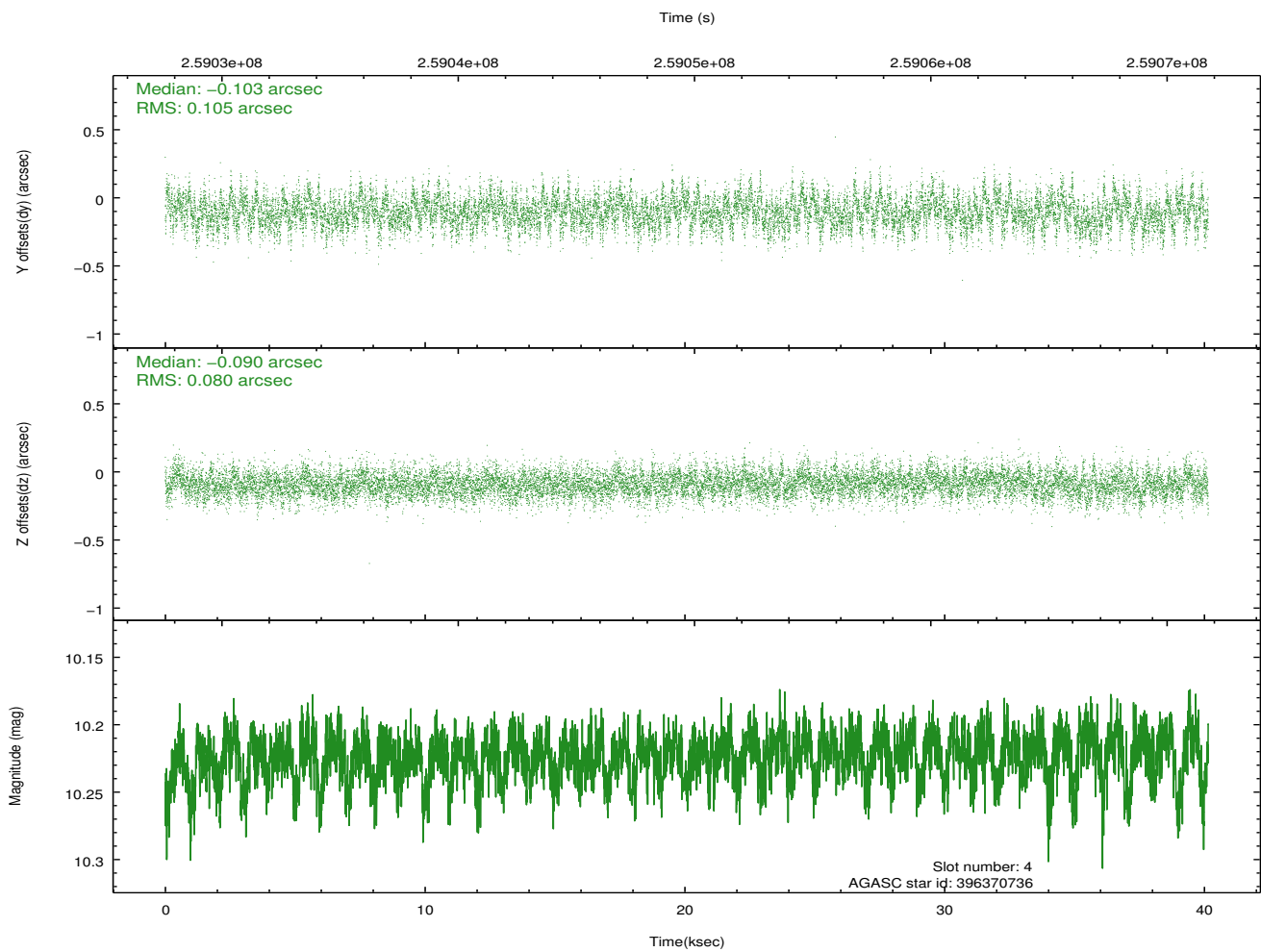
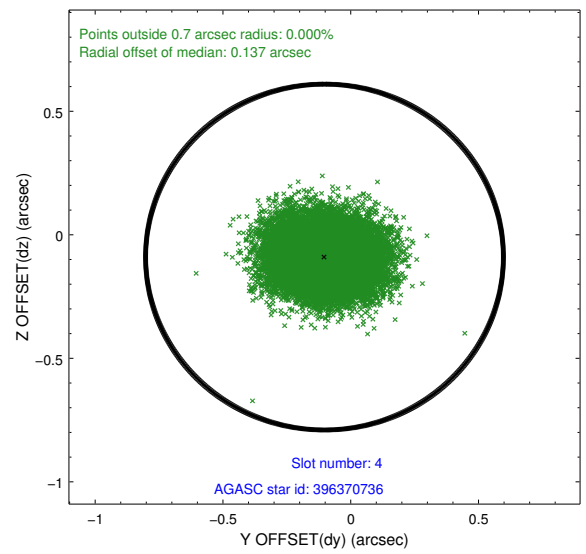
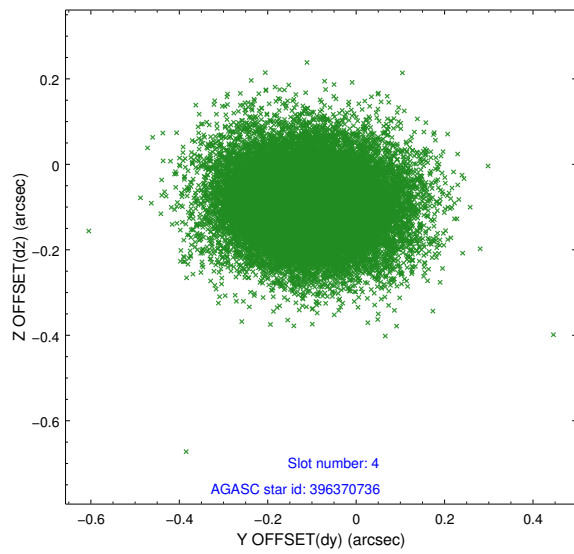
slot	status	id	mag	n_pts	med_dy	med_dz	dr1	dr2	ra	dec	mean_y	mean_z
0	FID	ACIS-S-2	7.10	9793	-0.060	-0.049	0.009	0.024	0.000000	0.000000	-759.46	-1730.75
1	FID	ACIS-S-4	7.21	9794	0.119	0.042	0.007	0.025	0.000000	0.000000	2153.96	177.85
2	FID	ACIS-S-5	7.24	9793	-0.089	0.015	0.008	0.015	0.000000	0.000000	-1812.34	171.45
3	GUIDE	396362344	10.13	19560	0.051	0.080	0.141	0.226	199.300463	42.355437	1884.91	2234.40
4	GUIDE	396370736	10.22	19562	-0.103	-0.090	0.140	0.229	199.463639	42.354407	1514.55	2007.63
5	GUIDE	397279560	9.53	19569	0.116	0.084	0.119	0.196	200.671510	42.519684	-875.35	-214.70
6	GUIDE	397281448	8.11	19589	-0.037	-0.031	0.065	0.104	200.111625	43.111167	1519.76	-1208.91
7	GUIDE	397283920	9.28	19498	-0.031	-0.042	0.089	0.141	201.322581	42.699311	-1969.26	-1697.65

2.4 Star Slots

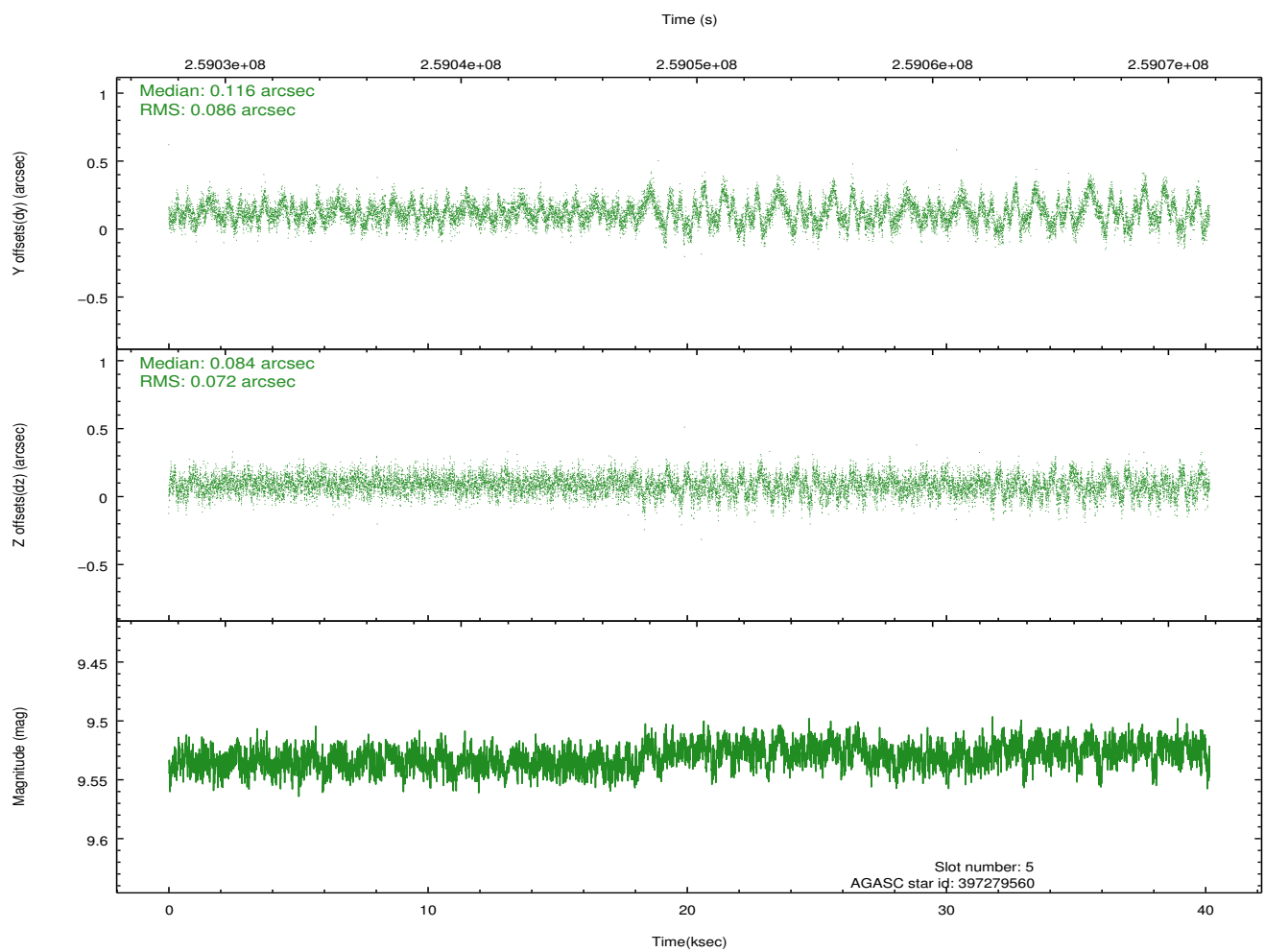
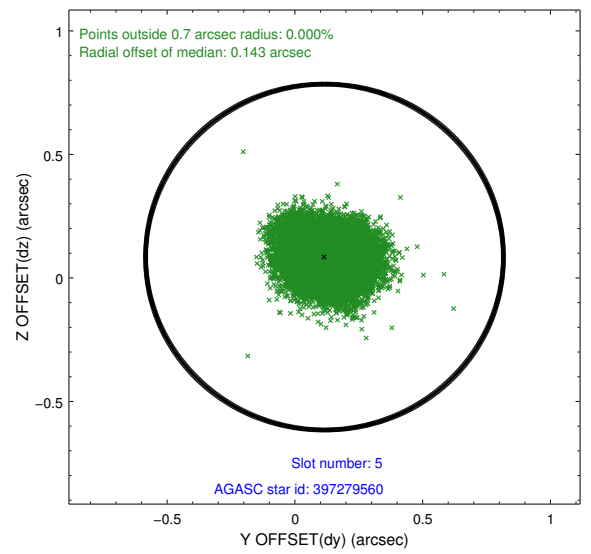
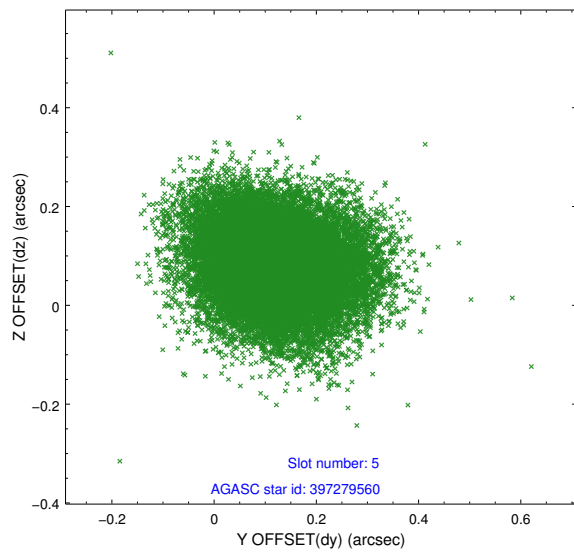
2.4.1 Slot 3



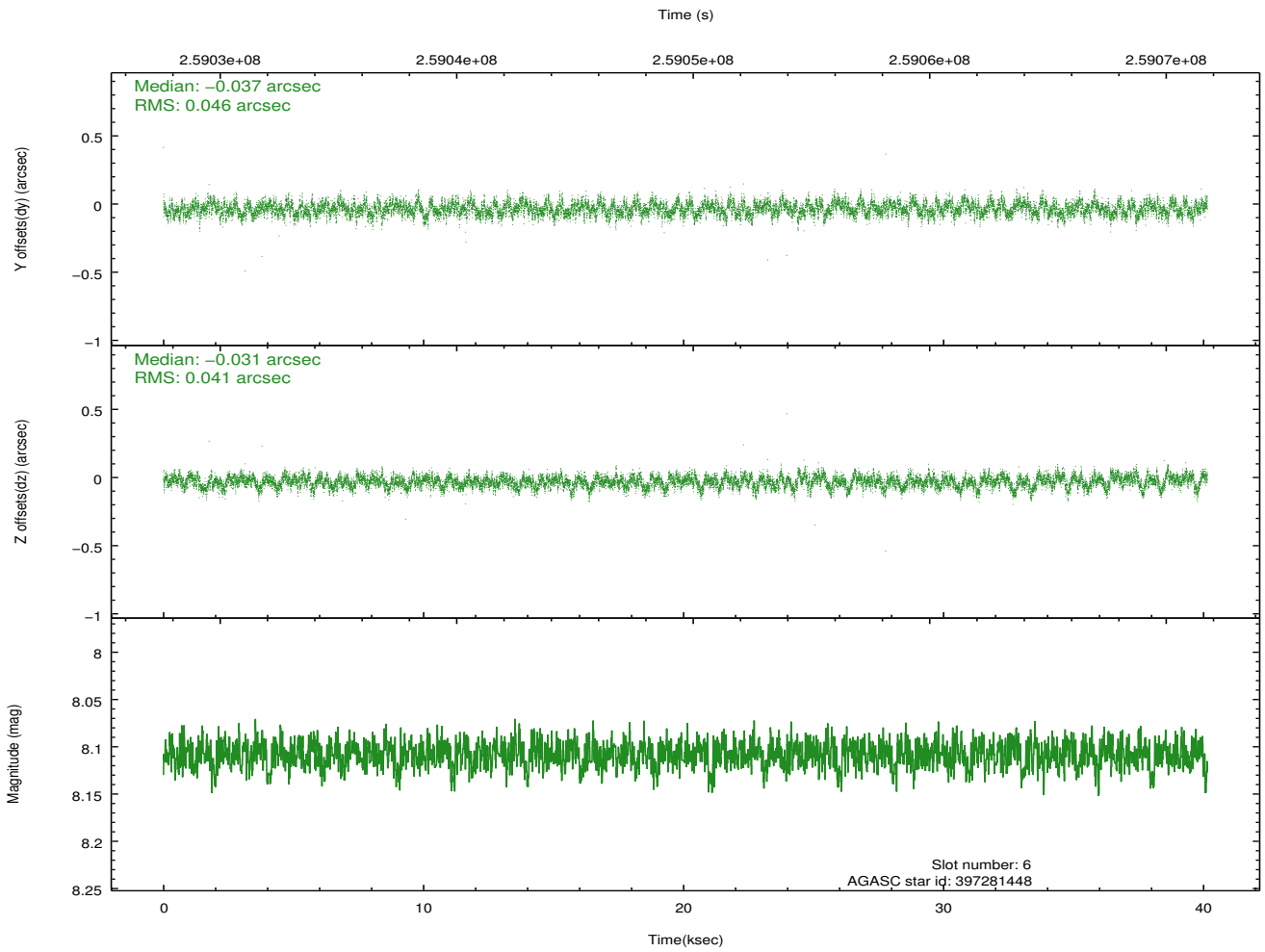
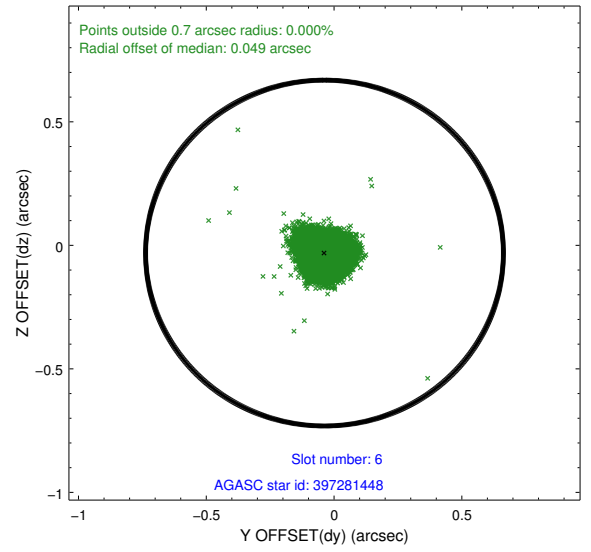
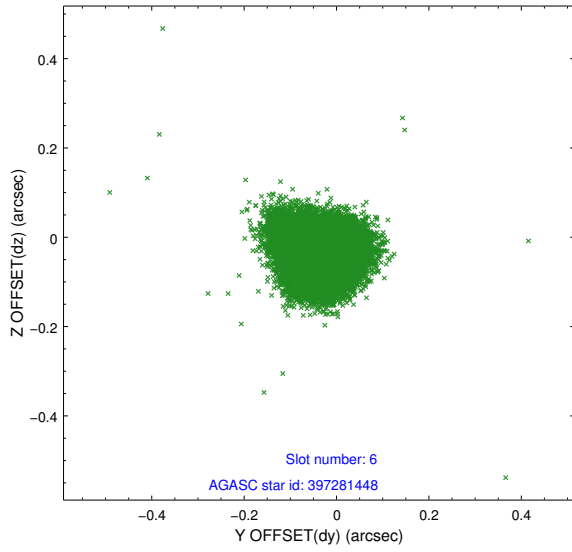
2.4.2 Slot 4



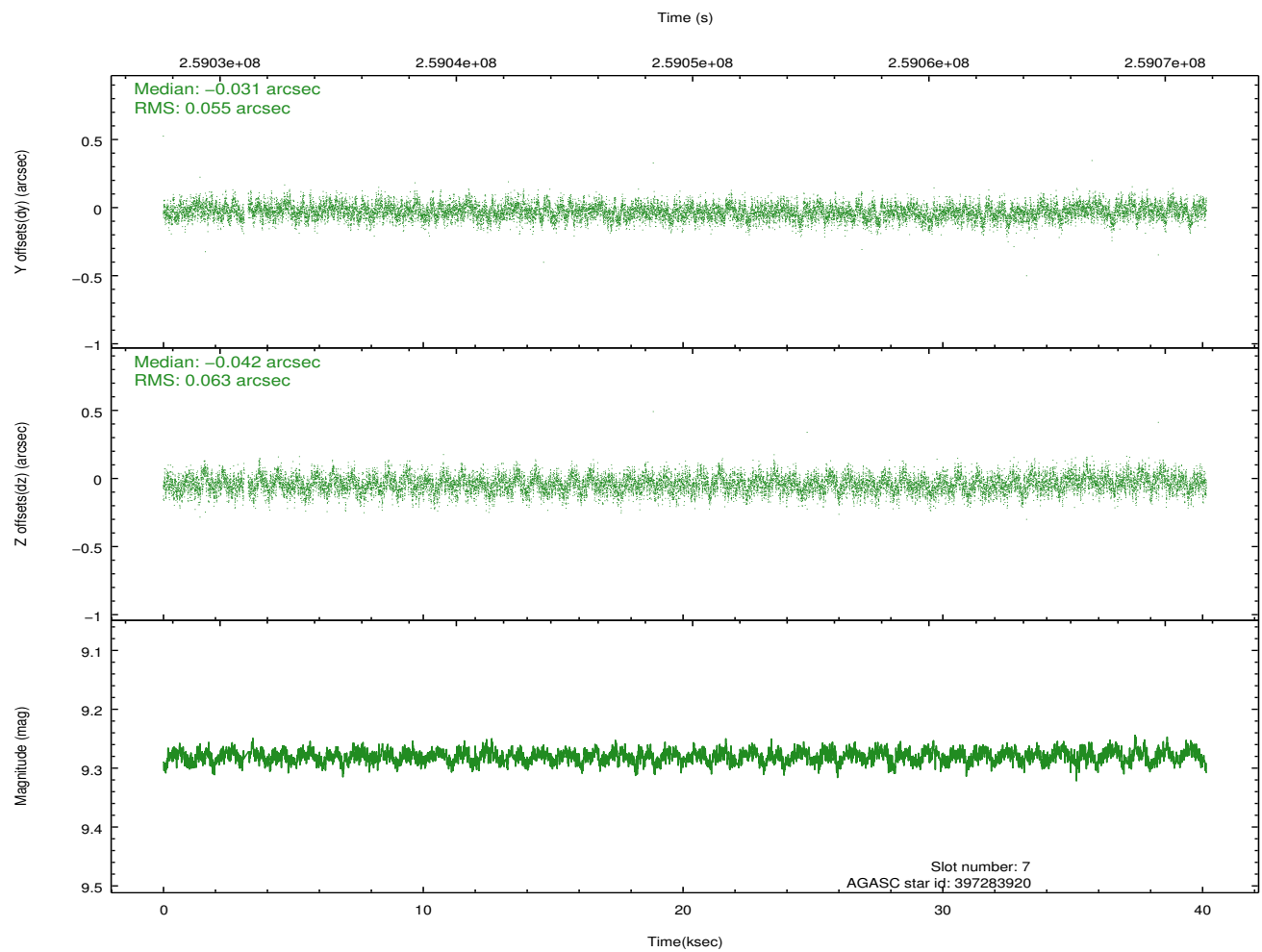
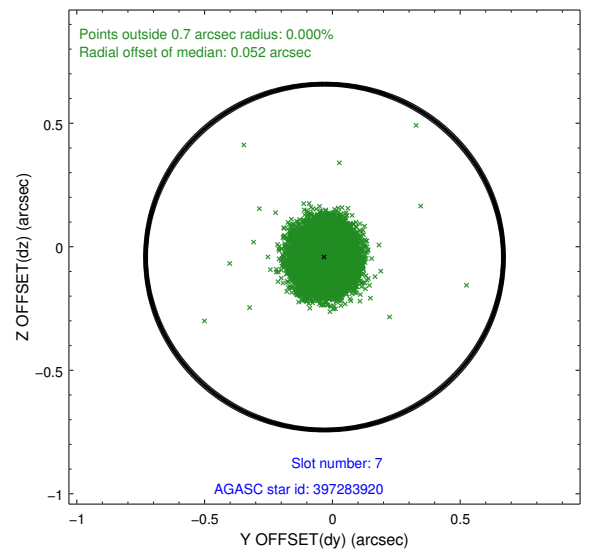
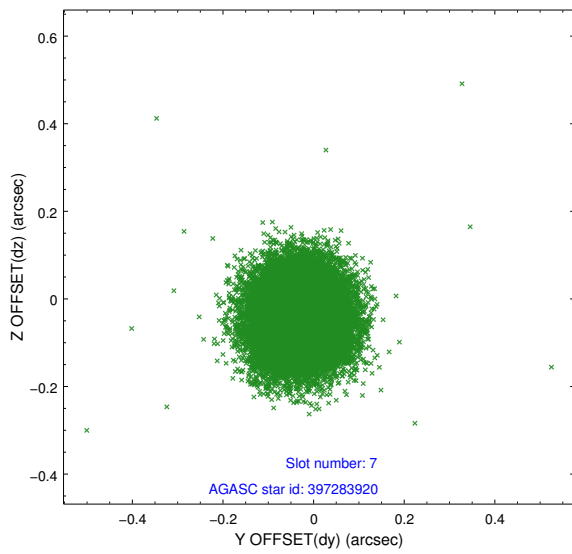
2.4.3 Slot 5



2.4.4 Slot 6

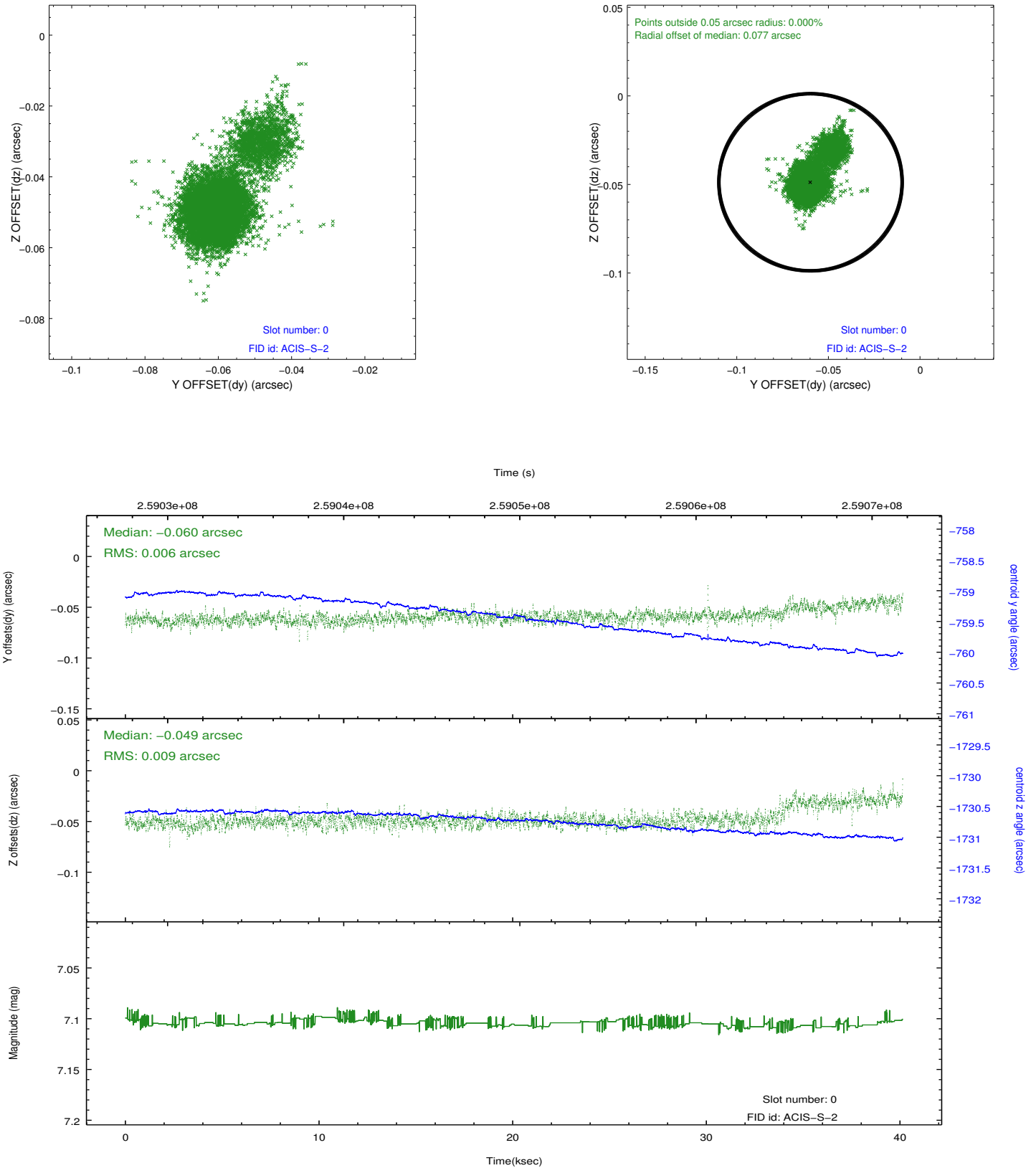


2.4.5 Slot 7

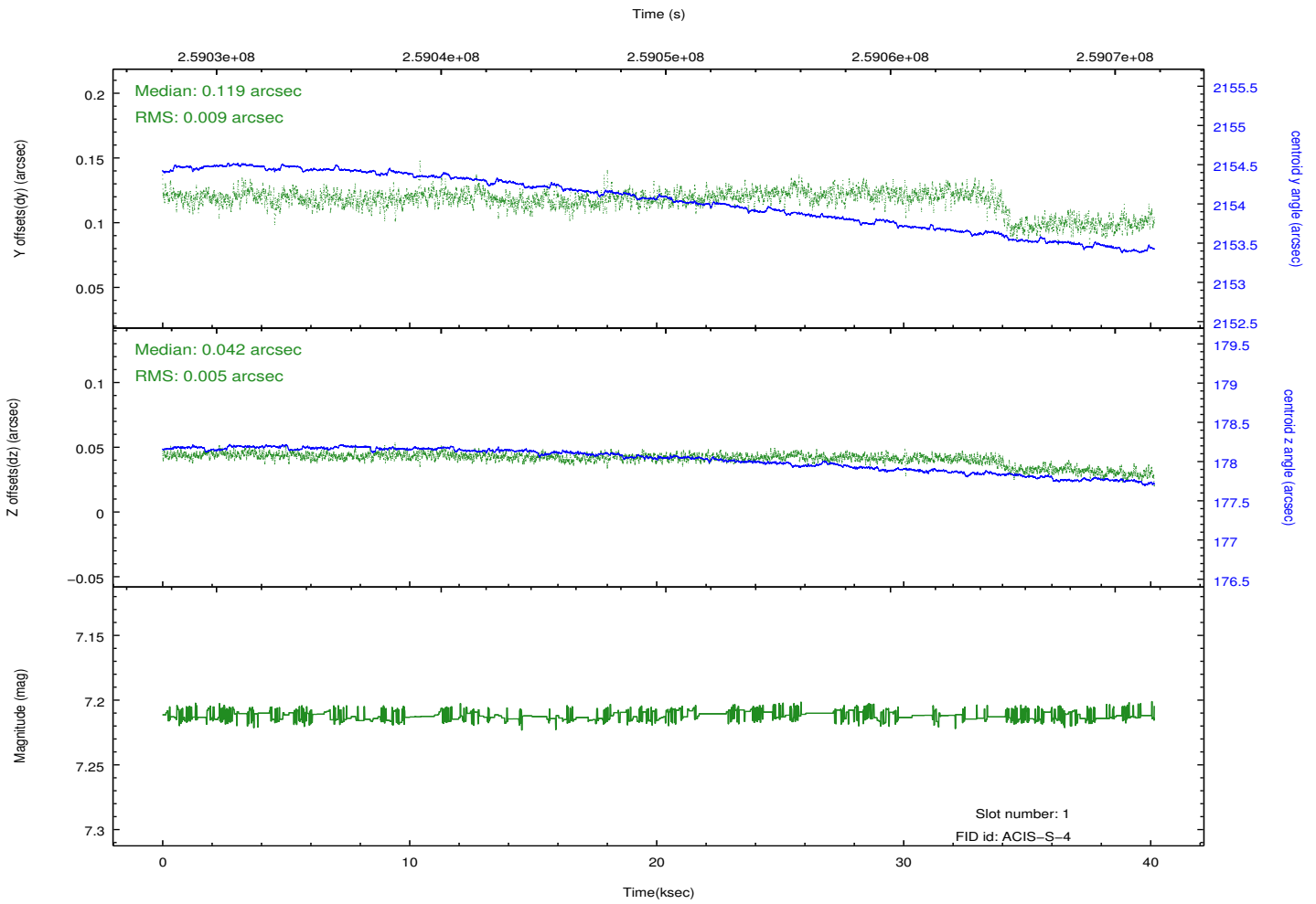
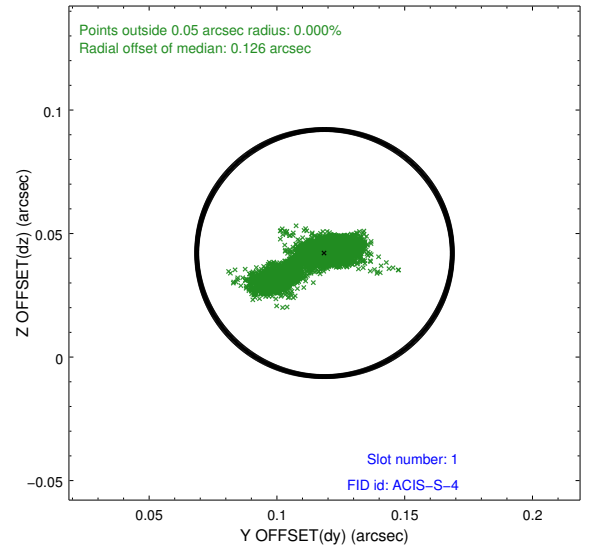
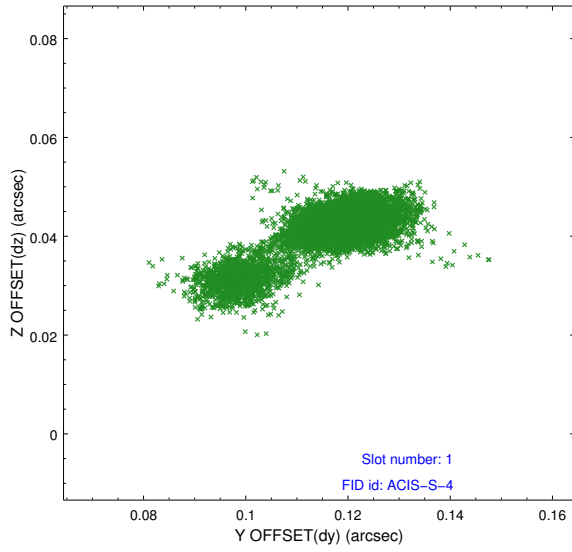


2.5 FID Slots

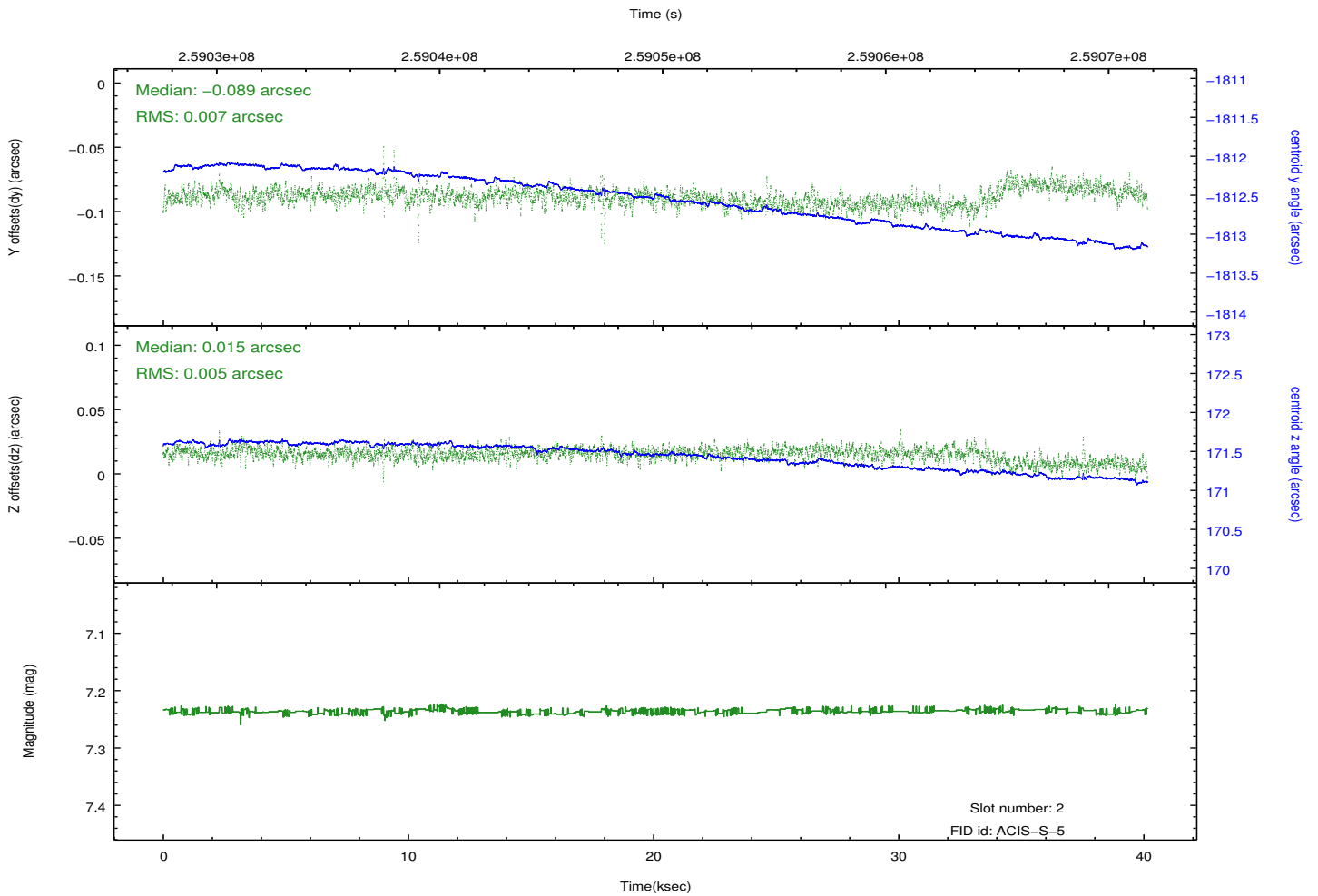
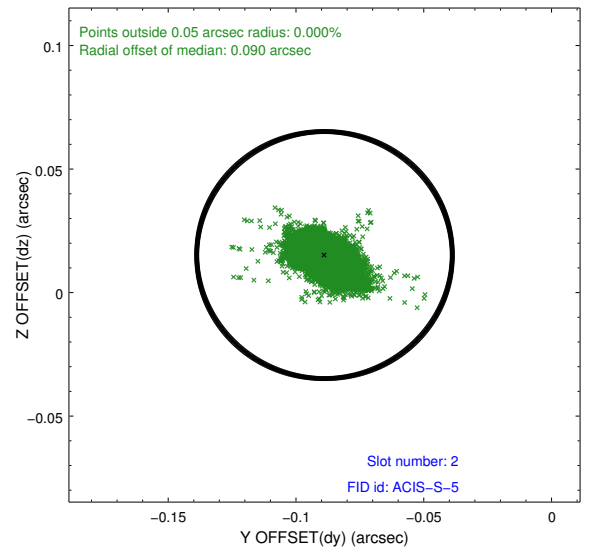
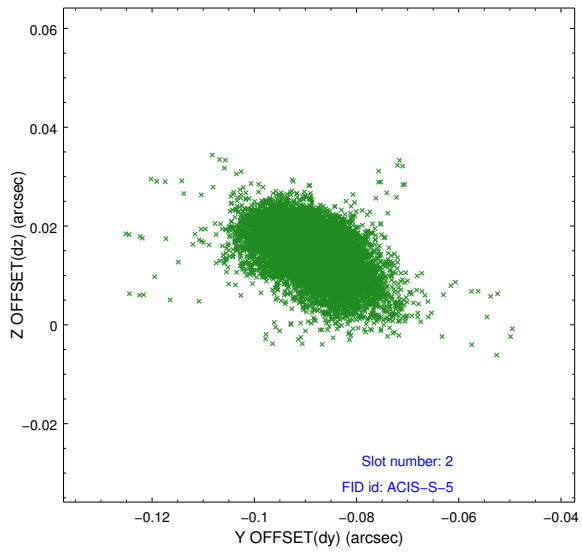
2.5.1 Slot 0



2.5.2 Slot 1



2.5.3 Slot 2



A Summary

A.1 Status

V&V Scientist	Beth Sundheim
V&V Date (YYYY-MM-DD)	2012.03.29
V&V Edition	1
V&V Disposition and Status	OK
V&V Charge Time	40.1480999

A.2 Comments