

V&V Reference Report

L2 ASCDS Version : 8.5.1.1

Observation 6941 - L2 Version 3
Chandra X-Ray Center

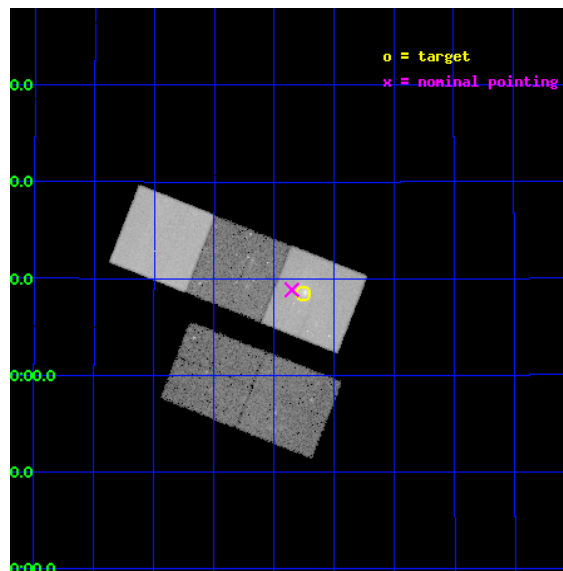
L2 Processing Date : Dec 31 2012

Contents

1	Front	2
2	OBI	3
2.1	OBI	3
2.1.1	Images	3
2.1.2	Bias	3
2.1.3	Parameters	4
2.1.4	Events	4
2.2	Compared Parameters	5
2.3	Aspect	6
2.4	Star Slots	9
2.4.1	Slot 3	9
2.4.2	Slot 4	10
2.4.3	Slot 5	11
2.4.4	Slot 6	12
2.4.5	Slot 7	13
2.5	FID Slots	14
2.5.1	Slot 0	14
2.5.2	Slot 1	15
2.5.3	Slot 2	16
A	Summary	17
A.1	Status	17
A.2	Comments	17

1 Front

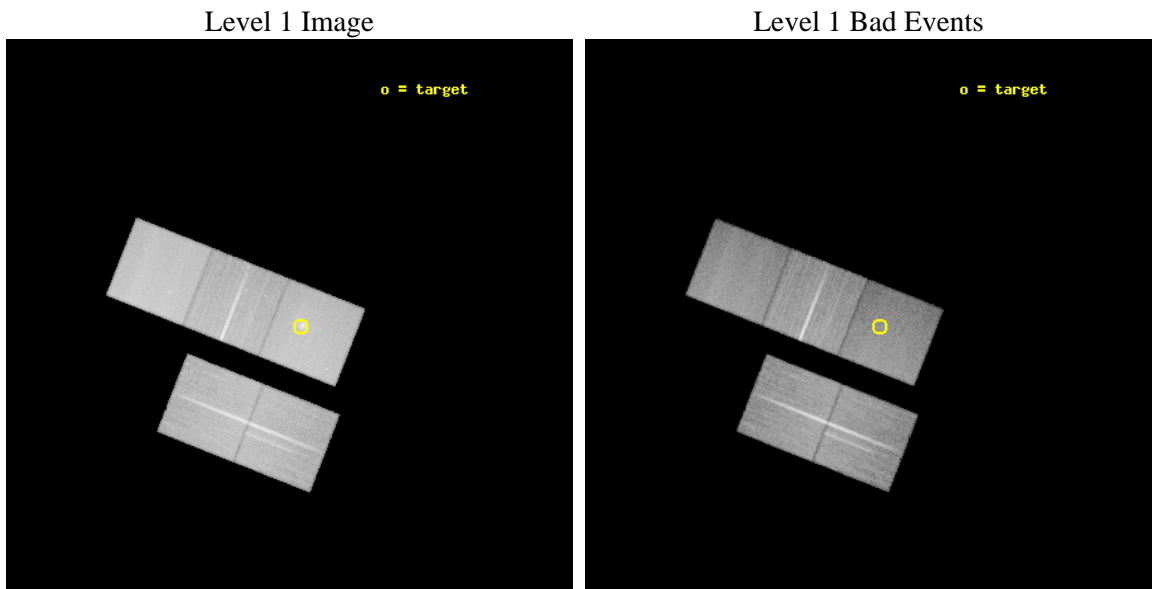
seq_num	800574	Sequence number
obs_id	6941	Observation id
title	The Cosmological Formation of Galaxy Groups	Proposal title
observer	Dr. DAVID BUOTE	Principal investigator
object	RXC J1320.2+3308	Source name
dtcycle	0	
cycle	P	events from which exps? Prim/Second/Both
ra_targ	200.064167	Observer's specified target RA [deg]
dec_targ	33.141667	Observer's specified target Dec [deg]
ra_nom	200.08792408977	Nominal RA [deg]
dec_nom	33.147655710836	Nominal Dec [deg]
roll_nom	21.511233731585	Nominal Roll [deg]
revision	3	Processing version of data
ontime	39134.399924725	Sum of GTIs [s]
livetime	38623.080179383	Livetime [s]
ontime2	39134.399924725	Sum of GTIs [s]
ontime3	39121.836123437	Sum of GTIs [s]
ontime5	39134.399924725	Sum of GTIs [s]
ontime6	39134.399924725	Sum of GTIs [s]
ontime7	39134.399924725	Sum of GTIs [s]
l2events	376937	Number of level 2 events



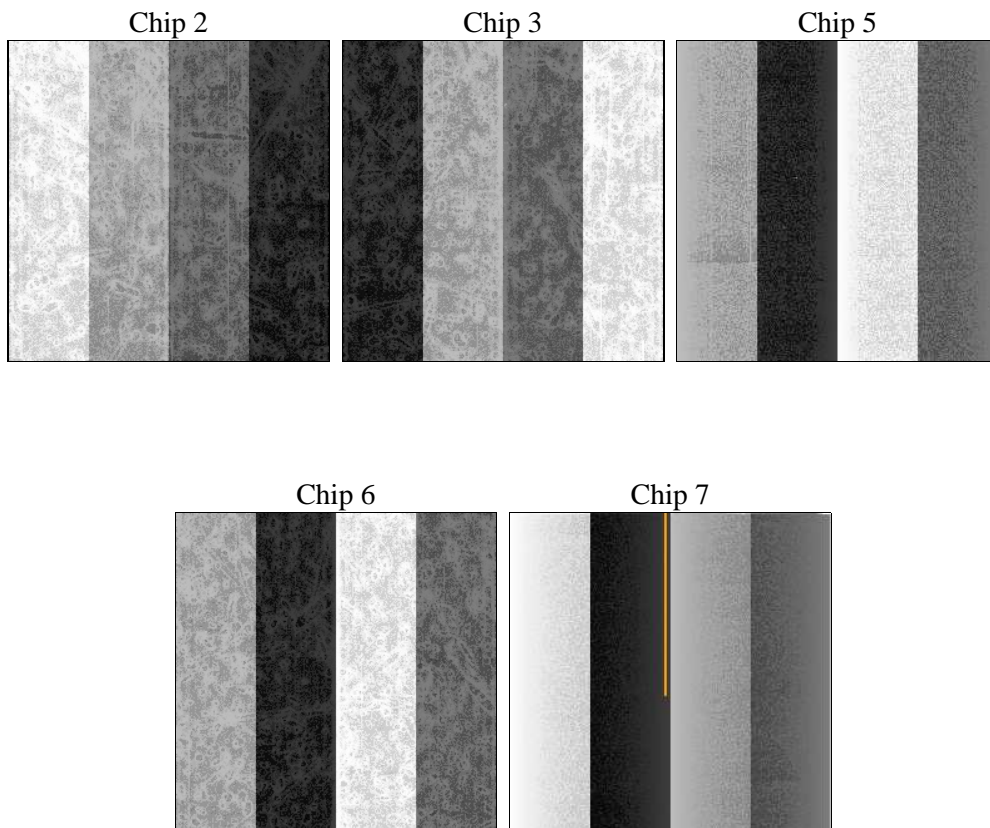
2 OBI

2.1 OBI

2.1.1 Images



2.1.2 Bias



2.1.3 Parameters

obi_num	0	Obi number	sched_exp_time	39000.000000	[s] Scheduled observation exposure time
ascdsver	8.5.1.1	Processing system revision	ontime	39134.399924725	Sum of GTIs [s]
caldsver	4.5.5	 	ontime2	39134.399924725	Sum of GTIs [s]
date	2012-12-31T10:28:40	Date and time of file creation	ontime3	39121.836123437	Sum of GTIs [s]
revision	3	Processing version of data	ontime5	39134.399924725	Sum of GTIs [s]
			ontime6	39134.399924725	Sum of GTIs [s]
			ontime7	39134.399924725	Sum of GTIs [s]
			l1events	1449066	Number of level 1 events

2.1.4 Events

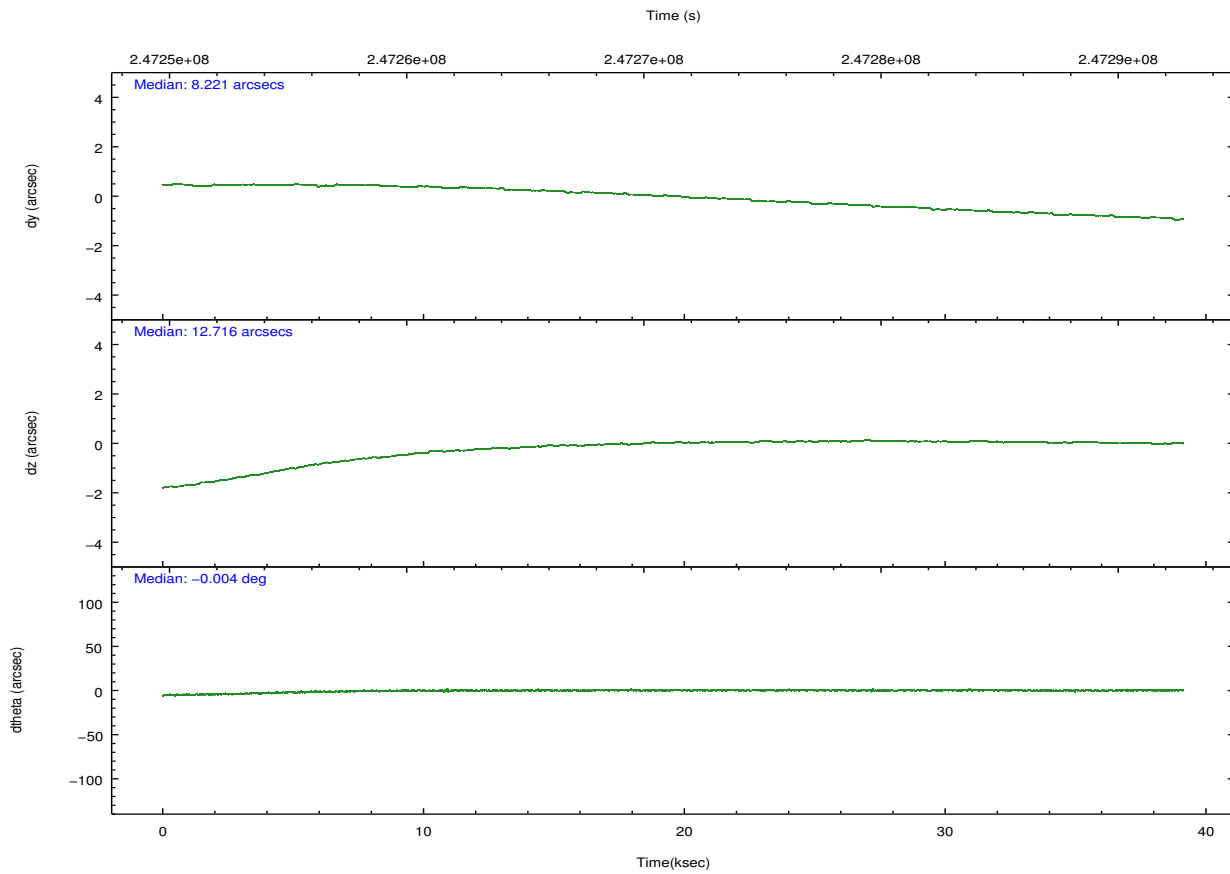
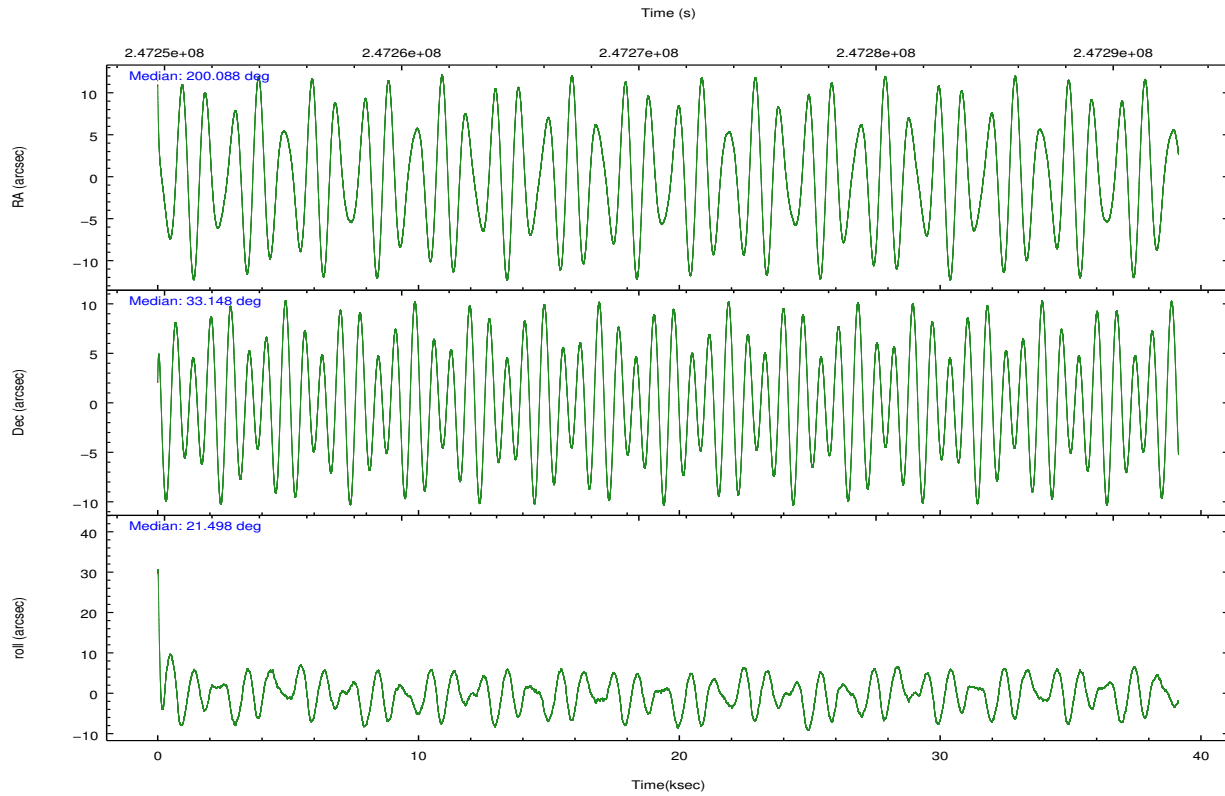
	ccd 2	ccd 3	ccd 5	ccd 6	ccd 7
level 1 events	272089	255061	349052	262840	310024
rejected events	247320	230862	181475	233168	160401
rejected %	90%	90%	51%	88%	51%

	ccd 2	ccd 3	ccd 5	ccd 6	ccd 7
grade 0 events	8915	8715	11291	11790	18494
	3%	3%	3%	4%	5%
grade 1 events	143	139	298	126	274
	0%	0%	0%	0%	0%
grade 2 events	5931	5178	50381	6152	31541
	2%	2%	14%	2%	10%
grade 3 events	2838	2892	7984	3103	14961
	1%	1%	2%	1%	4%
grade 4 events	2765	2811	7826	3114	14455
	1%	1%	2%	1%	4%
grade 5 events	8173	10150	28967	10543	31134
	3%	3%	8%	4%	10%
grade 6 events	4566	4866	92151	5794	71708
	1%	1%	26%	2%	23%
grade 7 events	238758	220310	150154	222218	127457
	87%	86%	43%	84%	41%

2.2 Compared Parameters

Parameter	Planned	Actual	Parameter	Planned	Actual
Instrument	ACIS	ACIS	Obspar format version number	7	7
Detector	ACIS-23567	ACIS-23567	Obspar file type	PREDICTED	ACTUAL
Grating	NONE	NONE	Obspar update status	NONE	UPDATED
Data mode	VFAINT	VFAINT	Number of optional ACIS chips dropped	0	0
Observation mode	POINTING	POINTING	On-chip summing requested	N	N
[deg] Pointing RA	200.068019	200.0879240897721	Subarray requested	NONE	NONE
[deg] Pointing Dec	33.126108	33.14765571083631	Alternating exposures requested	N	N
[deg] Pointing Roll	21.365478	21.51123373158498	[s] Primary exposure time	0.000000	3.1
[mm] SIM focus pos	-0.684267	-0.6828225247311905			
[mm] SIM defocus	0	0.001444936568705701			
[mm] SIM translation stage pos	-190.132523	-190.1400660498719			
[mm] SIM translation stage offset	0	0.00754346686406393			
[s] Observation start time (MET)	247251802.184000	247250559.46262			
Observation start date	2005-11-01T17:02:18	2005-11-01T16:42:39			
[s] Observation end time (MET)	247290802.184000	247291233.5145			
Observation end date	2005-11-02T03:52:18	2005-11-02T04:00:33			
Read mode	TIMED	TIMED			

2.3 Aspect

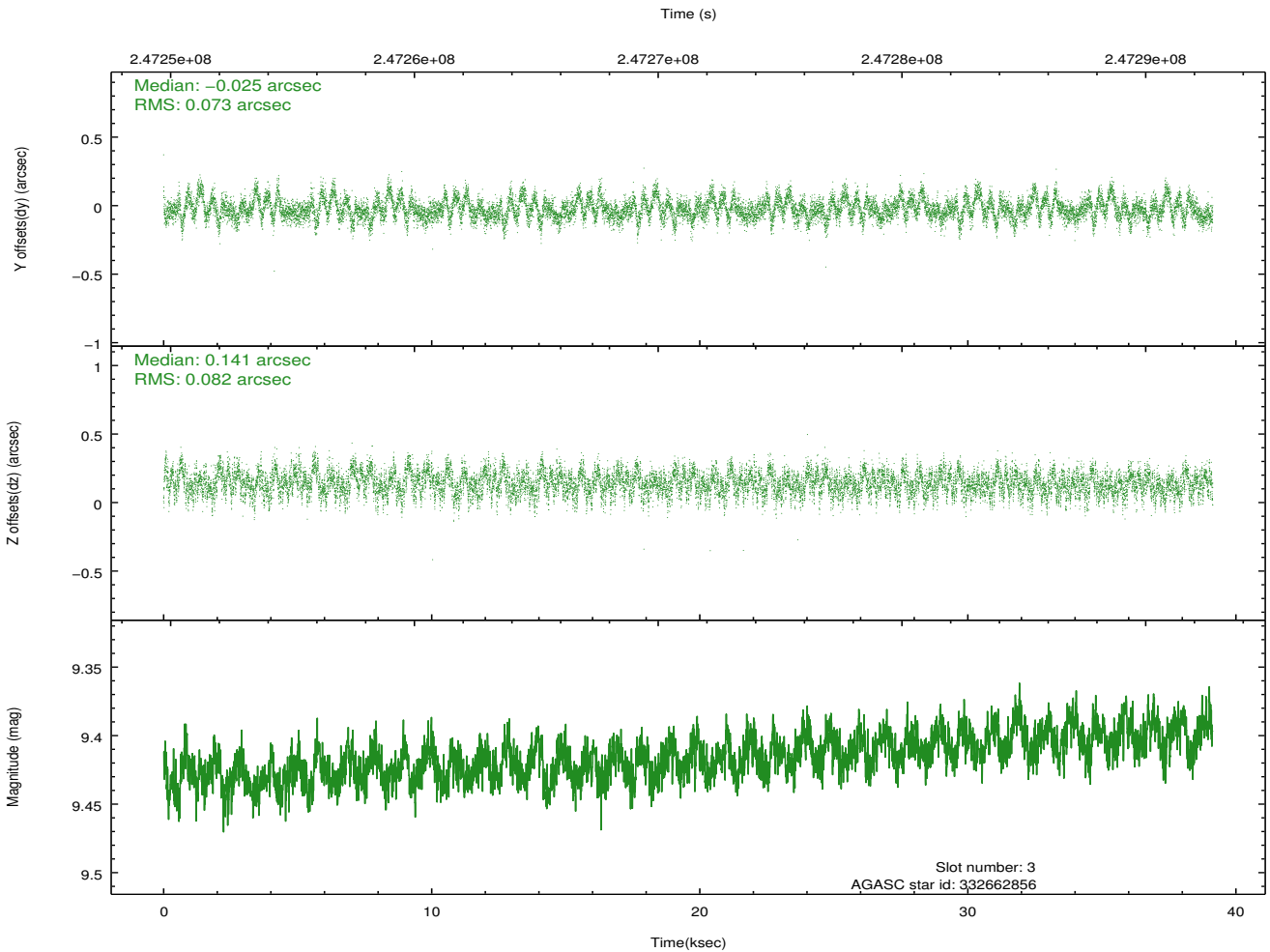
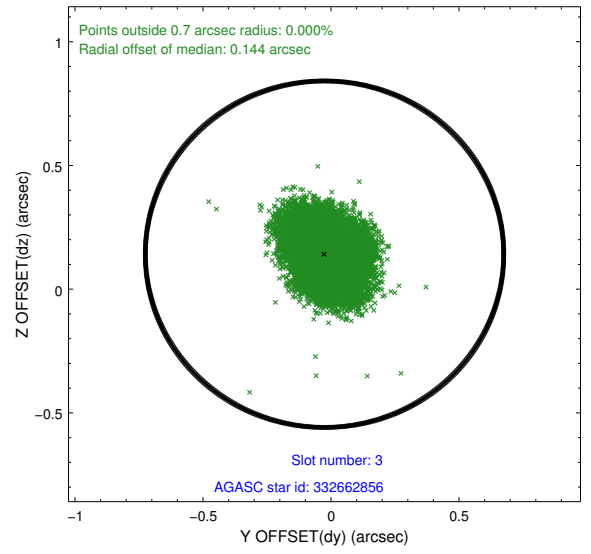
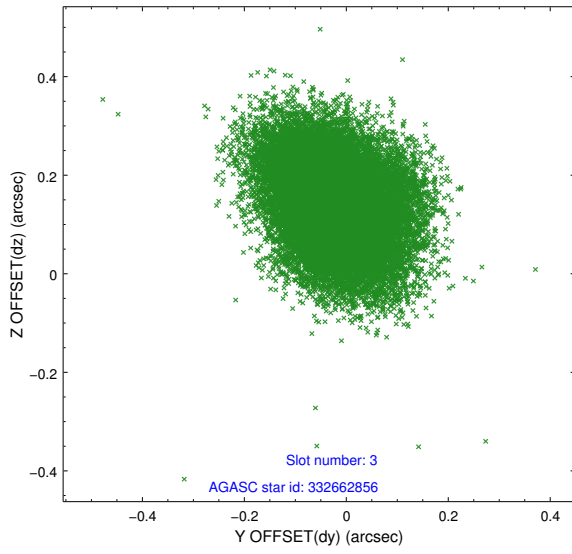


Slot Statistics

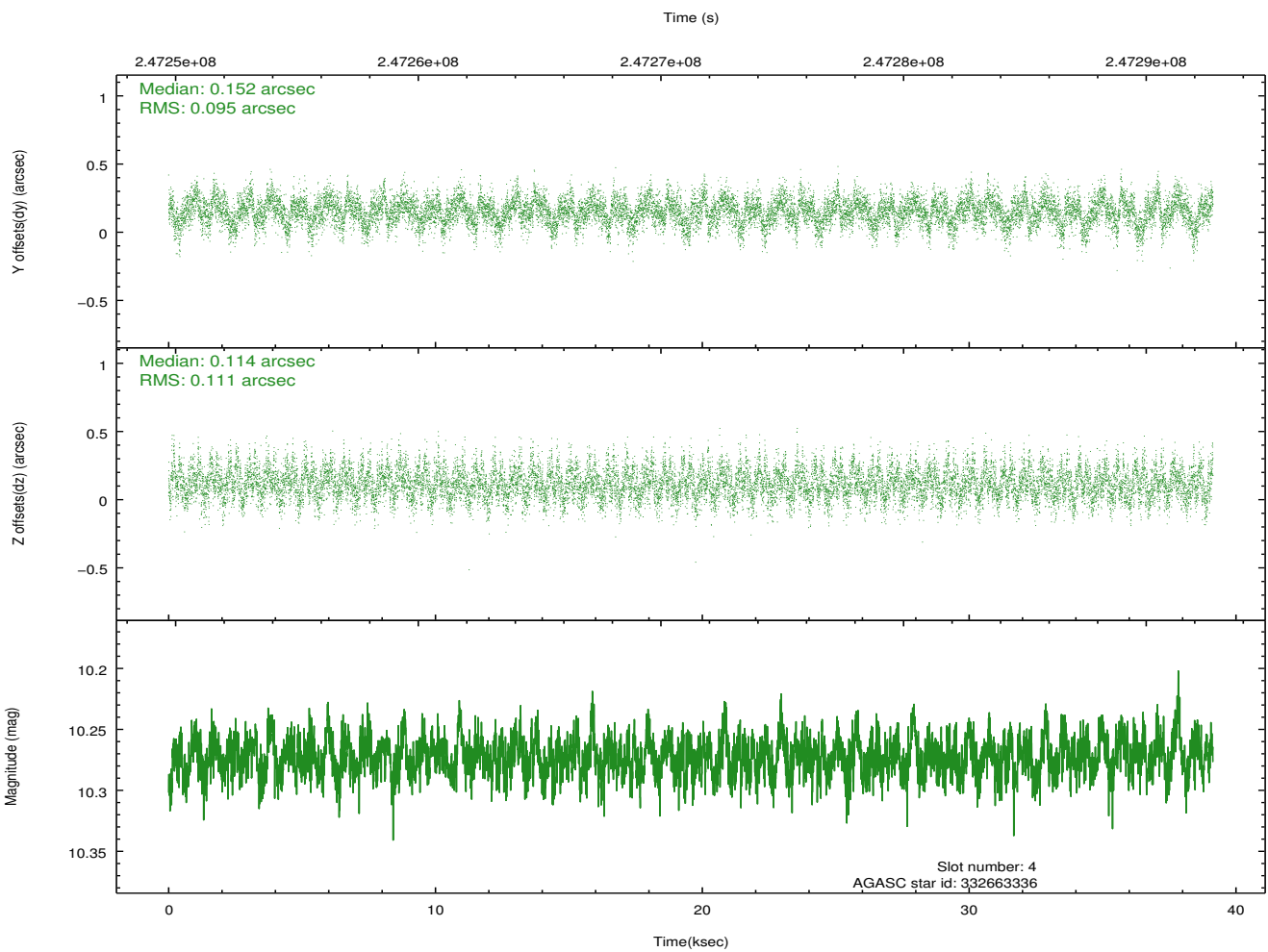
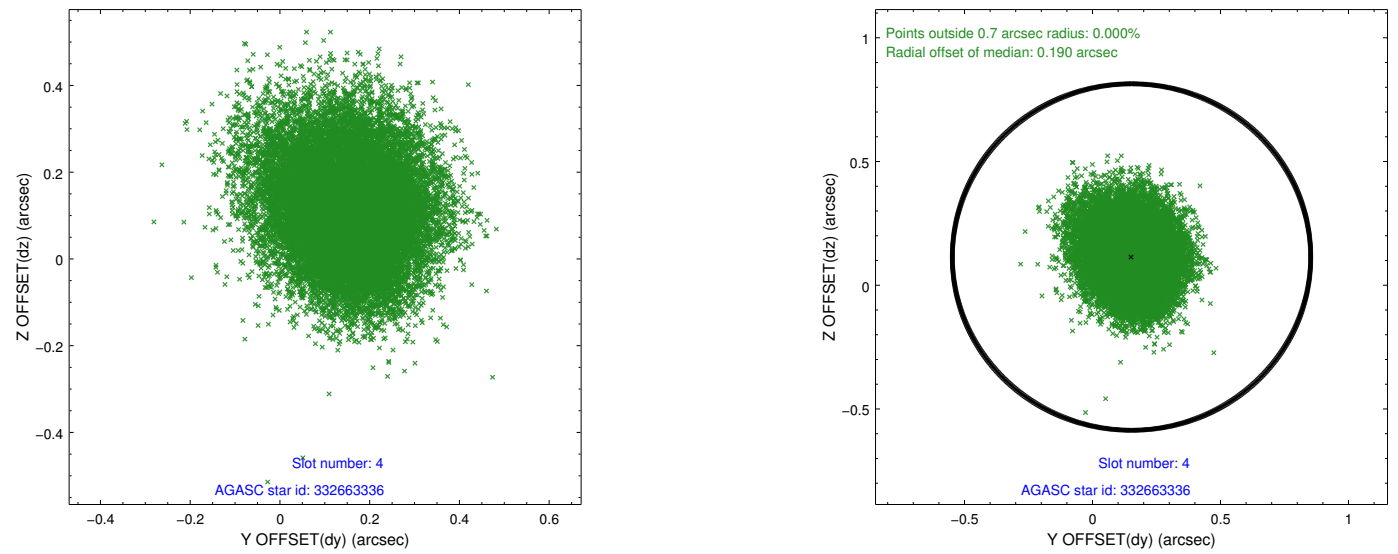
slot	status	id	mag	n_pts	med_dy	med_dz	dr1	dr2	ra	dec	mean_y	mean_z
0	FID	ACIS-S-2	7.10	9547	-0.010	-0.040	0.014	0.039	0.000000	0.000000	-760.94	-1733.79
1	FID	ACIS-S-4	7.20	9547	0.101	0.015	0.021	0.034	0.000000	0.000000	2152.44	174.72
2	FID	ACIS-S-5	7.23	9547	-0.122	0.033	0.024	0.037	0.000000	0.000000	-1813.86	168.44
3	GUIDE	332662856	9.42	19073	-0.025	0.141	0.117	0.189	200.000182	32.747147	-687.60	-1195.46
4	GUIDE	332663336	10.27	19066	0.152	0.114	0.155	0.252	200.152981	32.741672	-264.37	-1382.34
5	GUIDE	332666152	7.92	19086	-0.021	-0.077	0.068	0.109	199.716427	33.438695	-572.99	1434.39
6	GUIDE	332666552	9.92	19074	-0.117	-0.211	0.109	0.178	200.269618	33.352698	862.18	539.47
7	GUIDE	332668216	9.85	19061	0.012	0.029	0.123	0.198	200.013897	33.038163	-266.92	-235.07

2.4 Star Slots

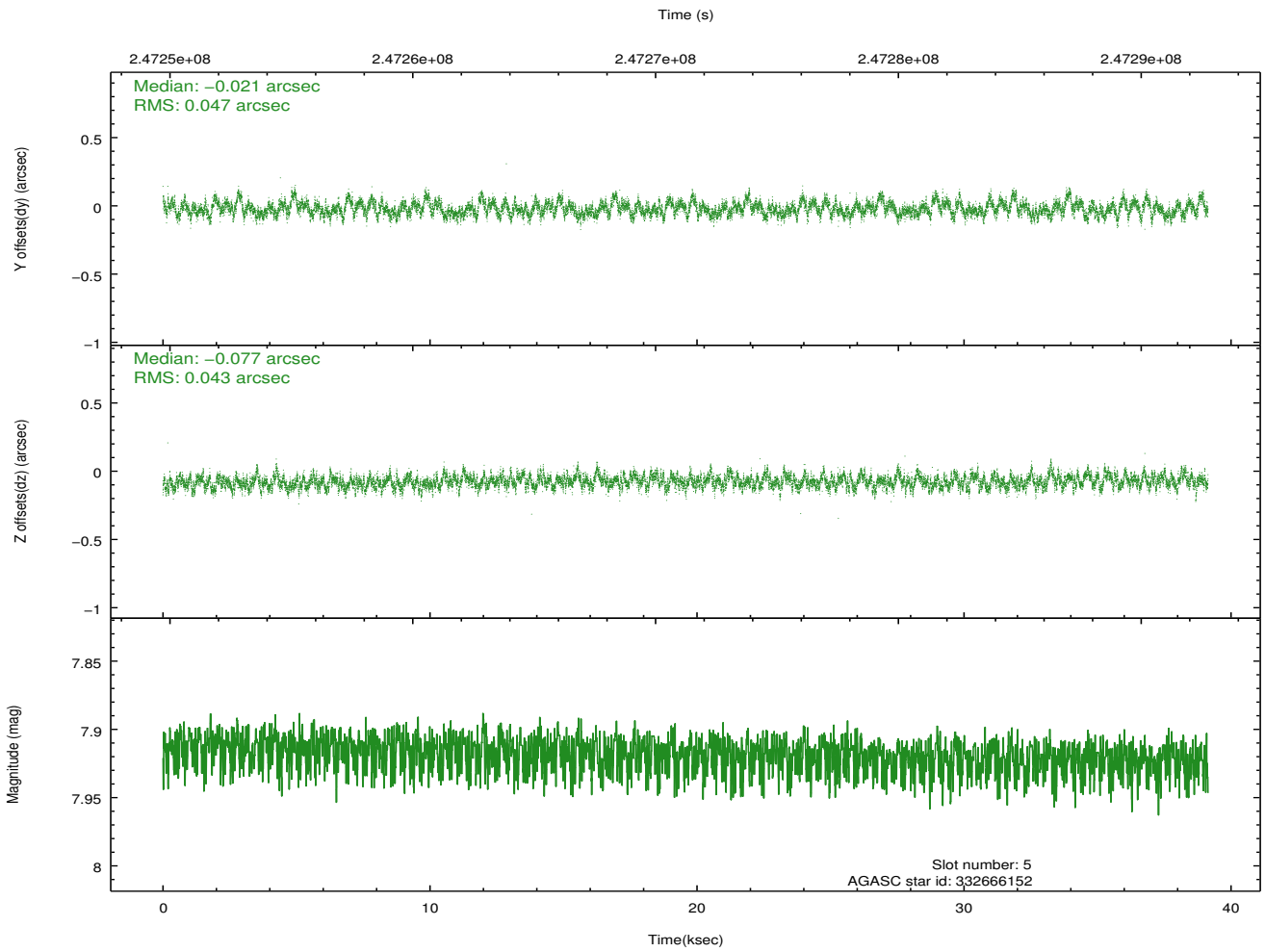
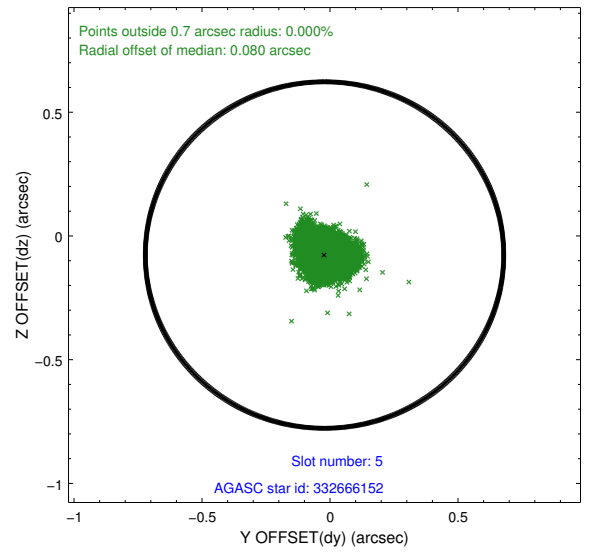
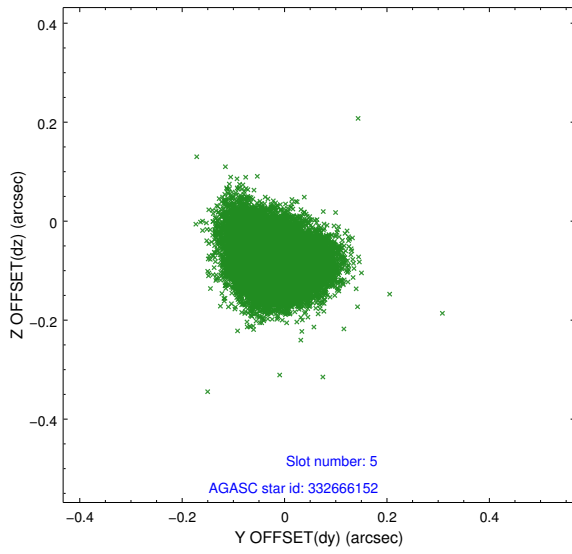
2.4.1 Slot 3



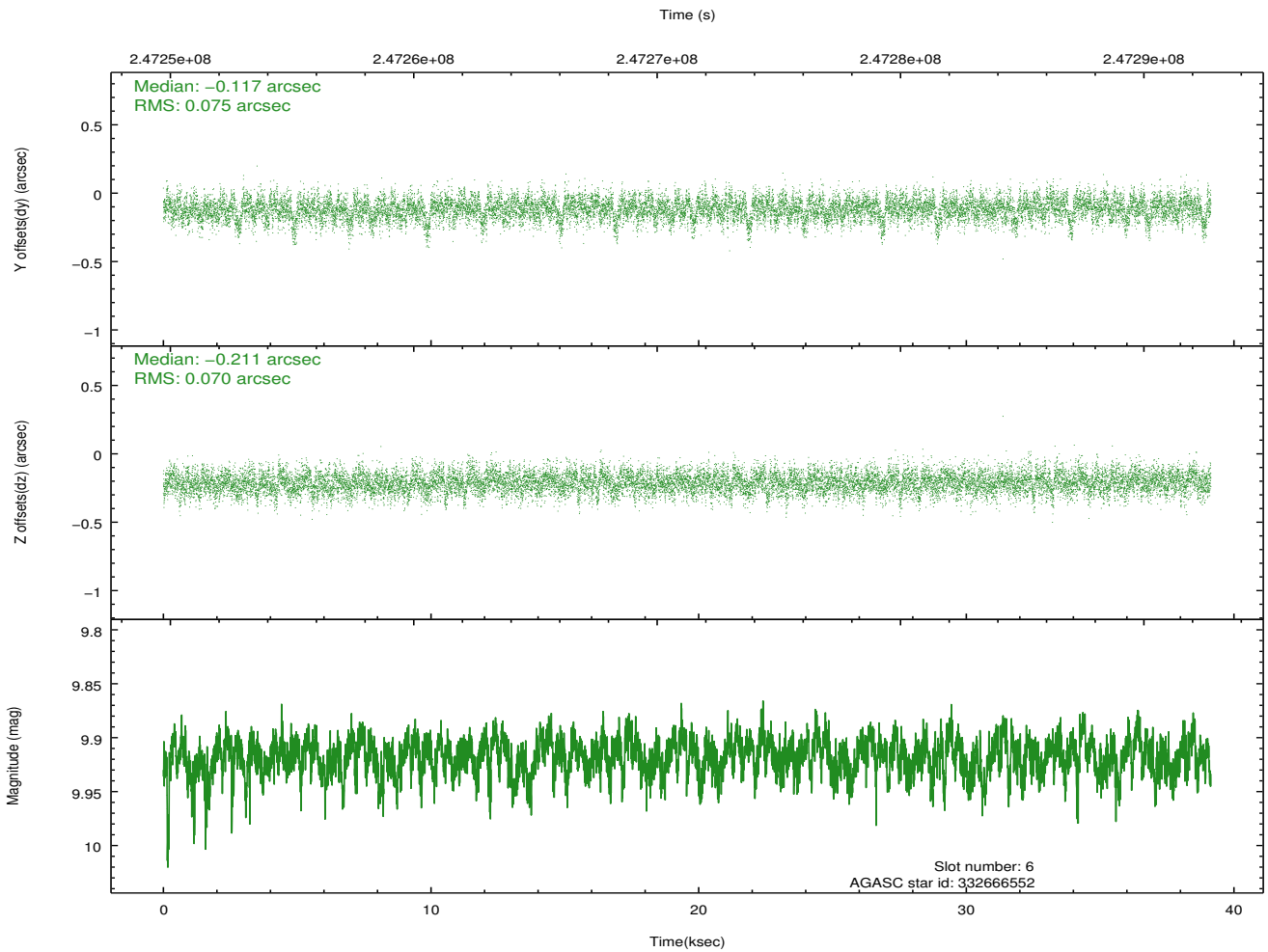
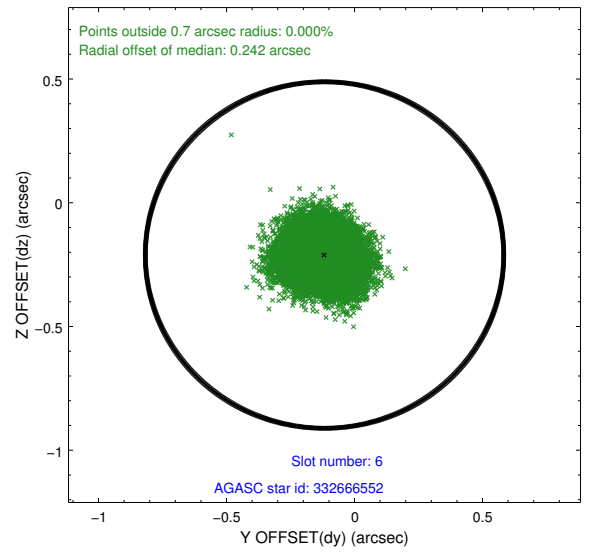
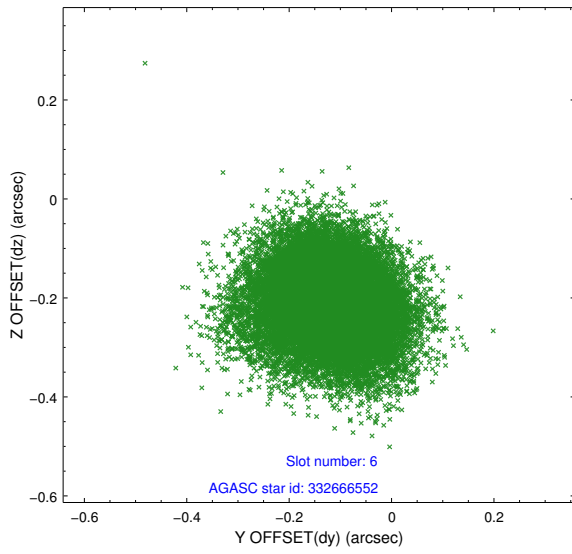
2.4.2 Slot 4



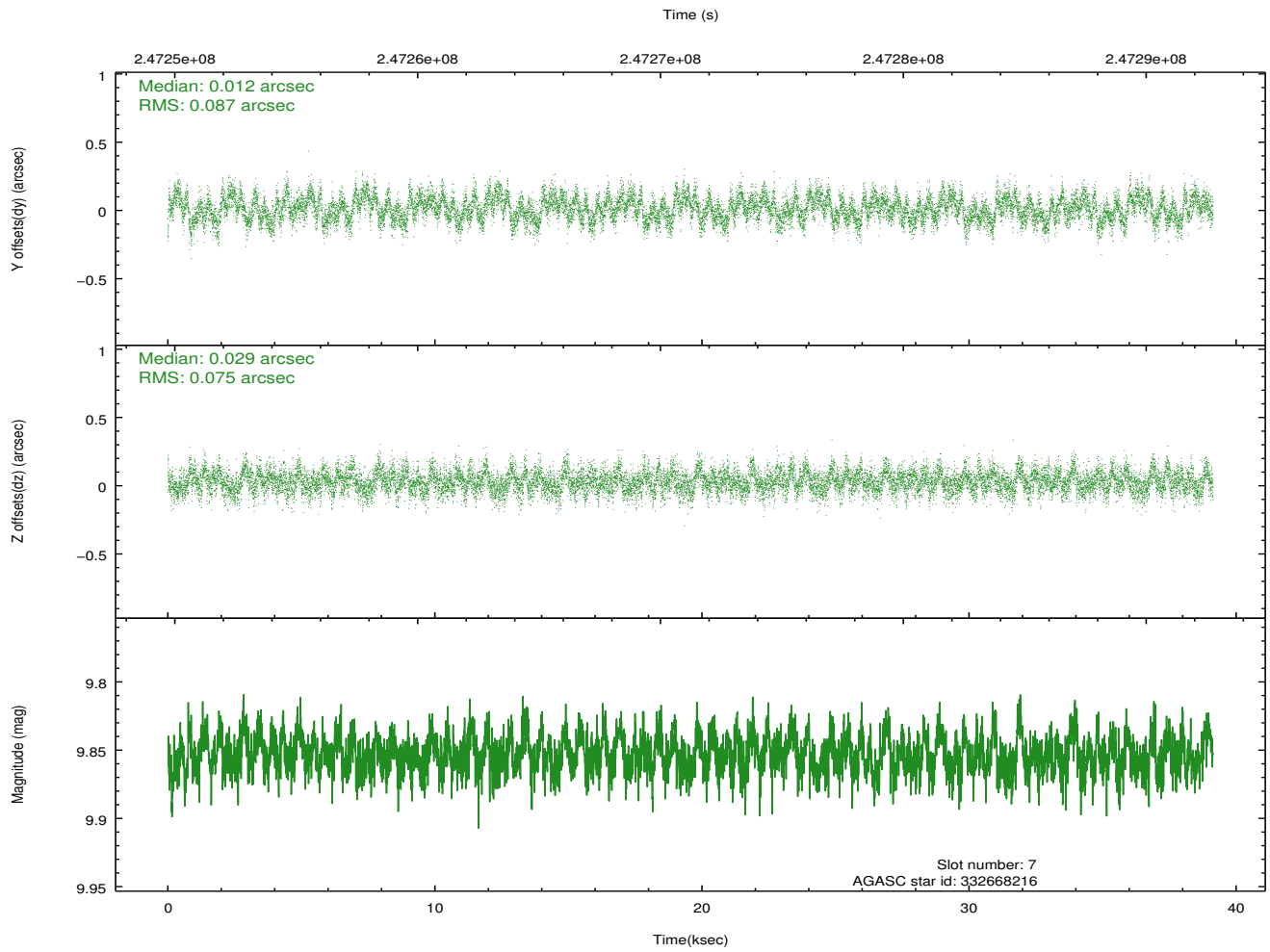
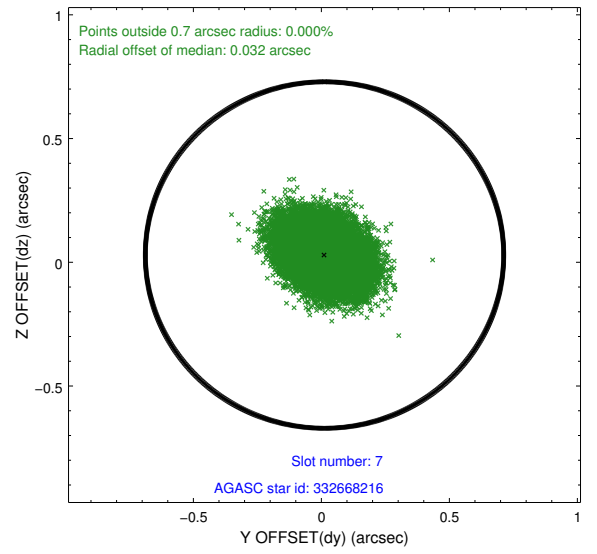
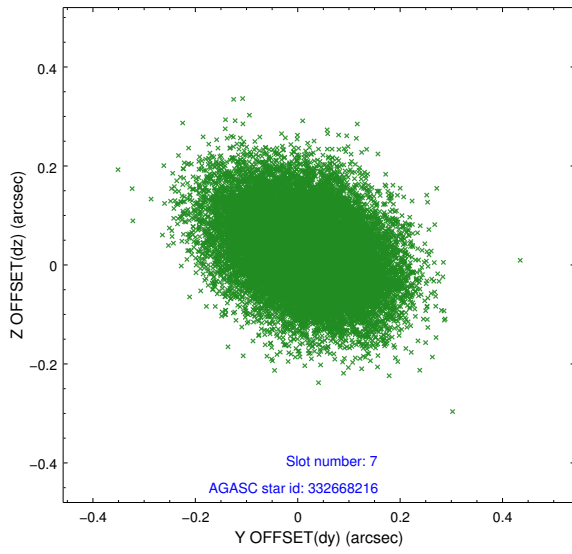
2.4.3 Slot 5



2.4.4 Slot 6

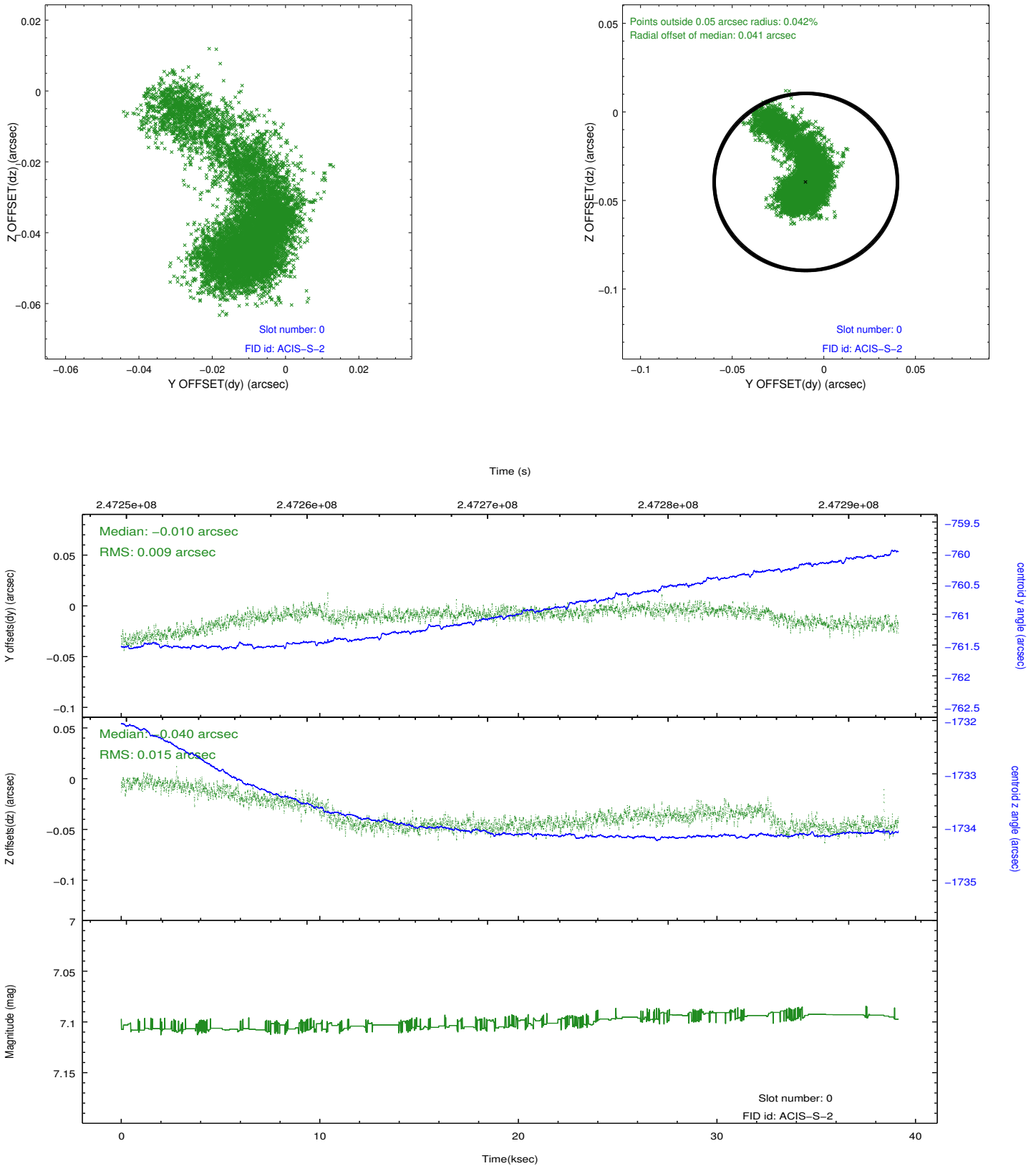


2.4.5 Slot 7

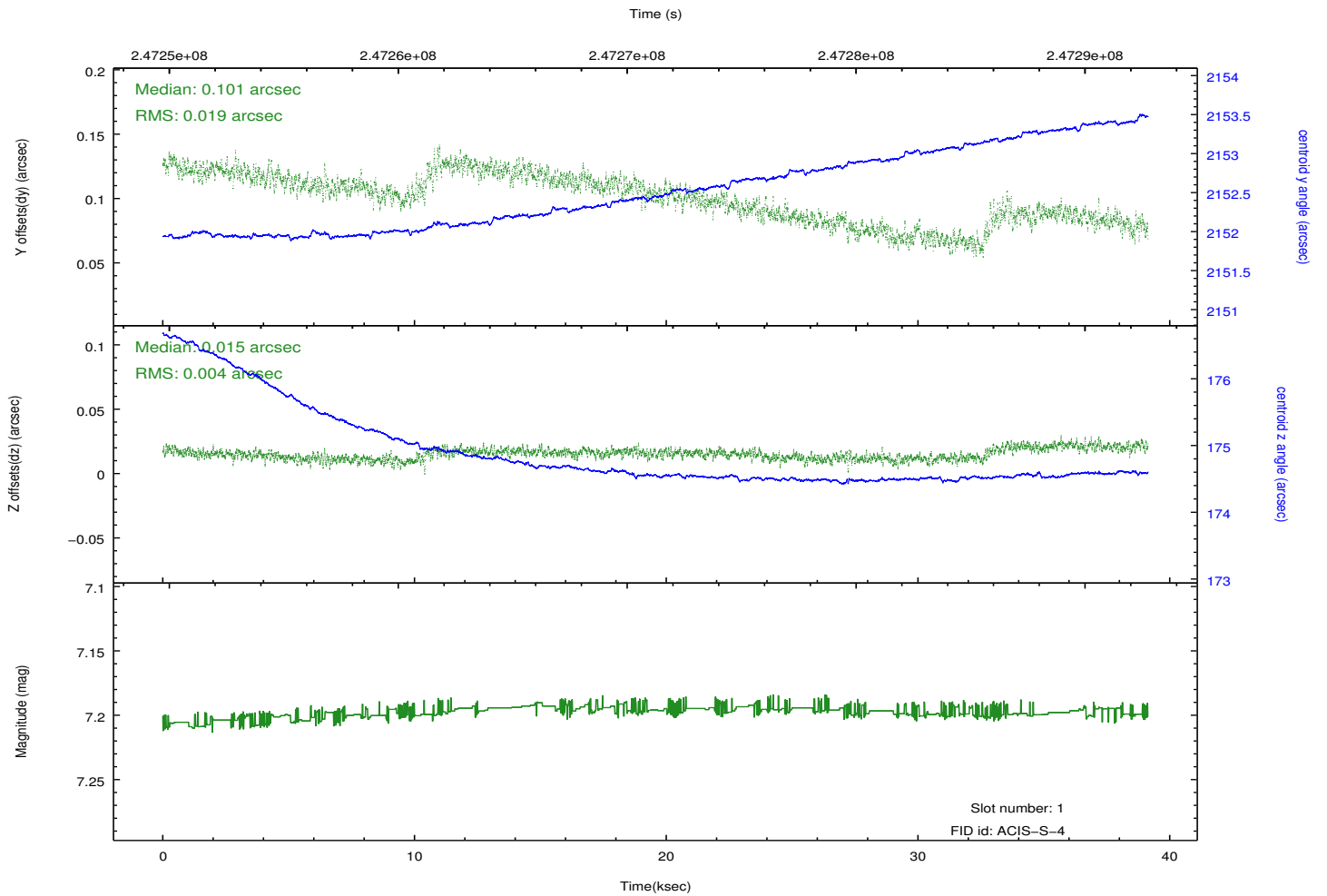
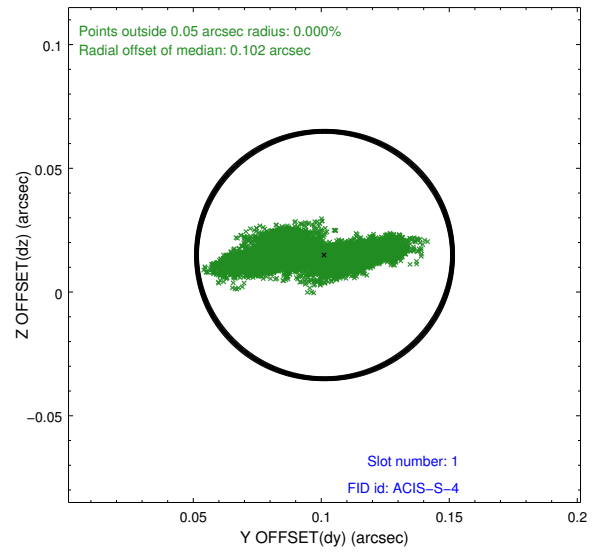
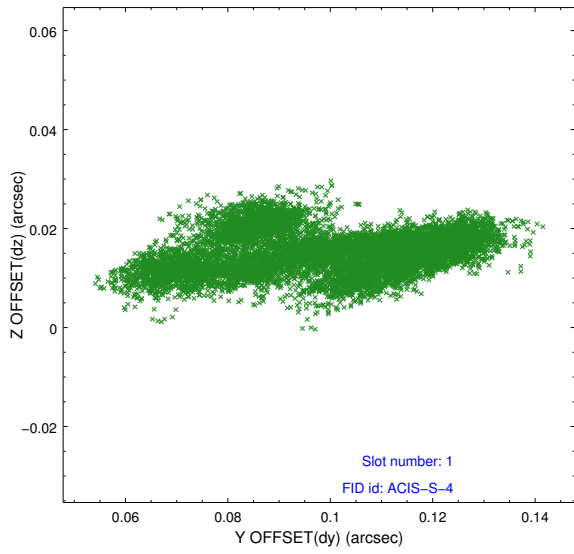


2.5 FID Slots

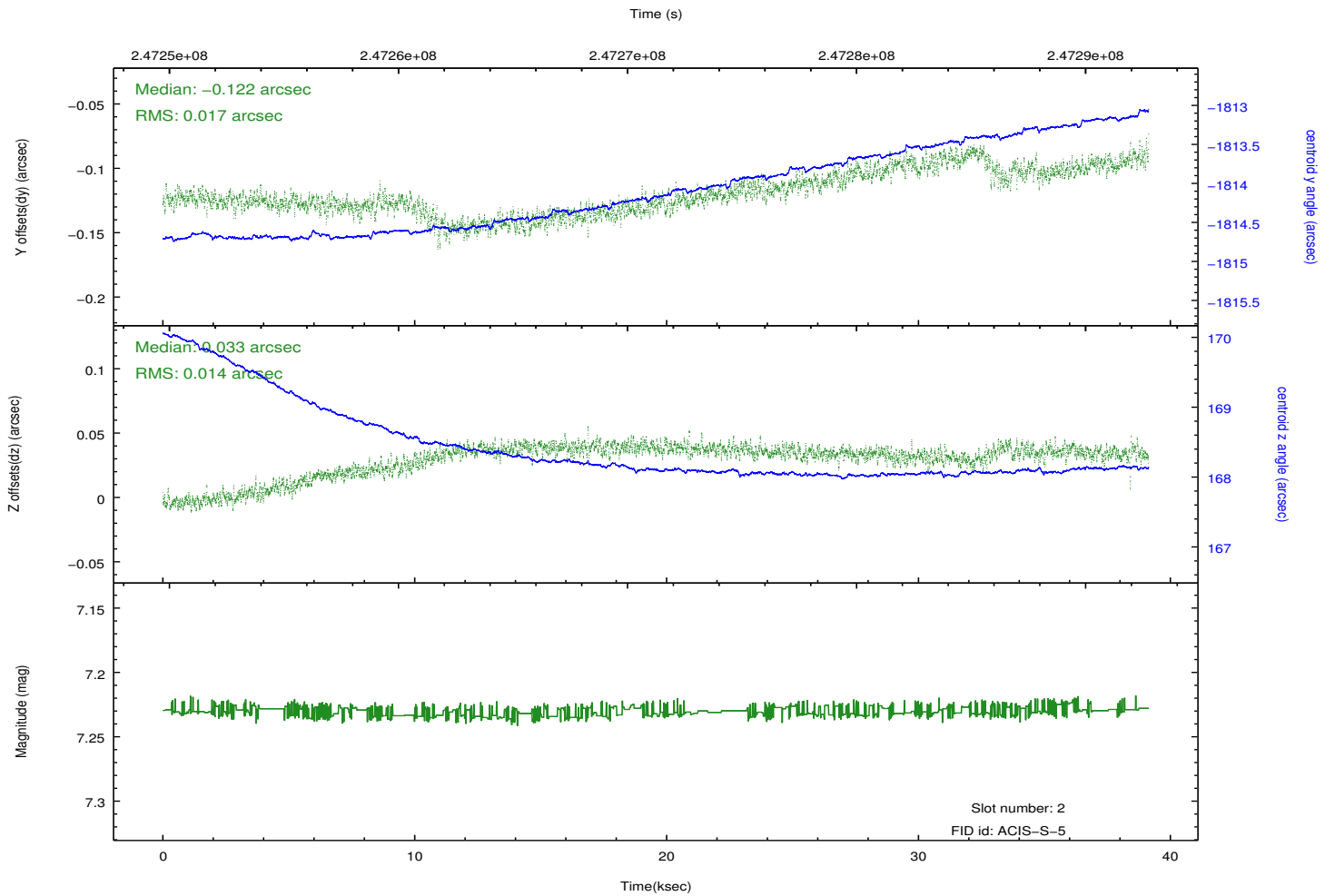
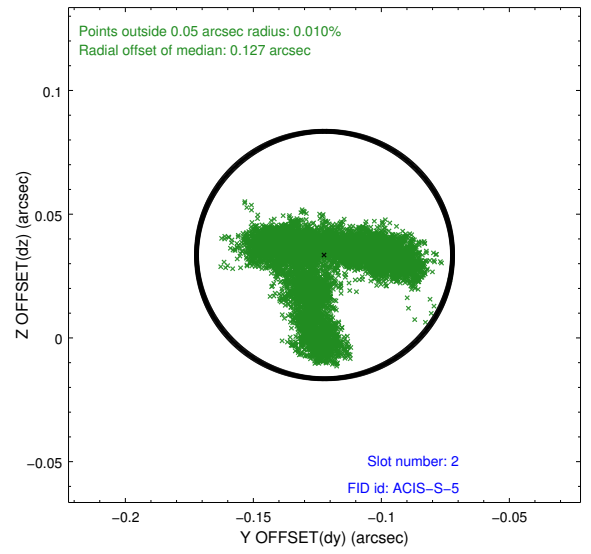
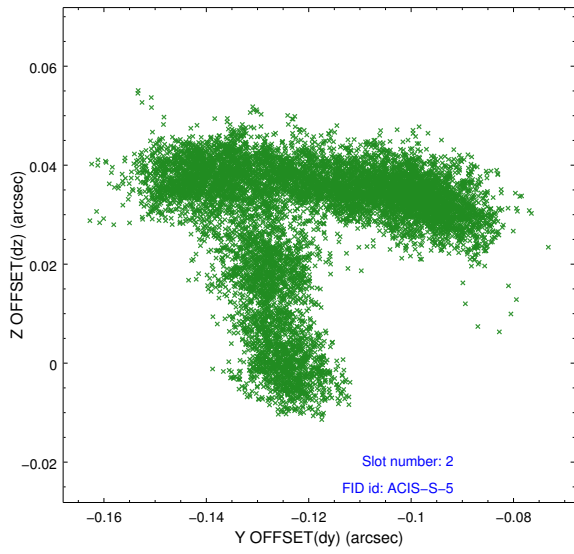
2.5.1 Slot 0



2.5.2 Slot 1



2.5.3 Slot 2



A Summary

A.1 Status

V&V Scientist	Jen Lauer
V&V Date (YYYY-MM-DD)	2013.01.28
V&V Edition	1
V&V Disposition and Status	OK
V&V Charge Time	39.13439

A.2 Comments