

V&V Reference Report

L2 ASCDS Version : 8.4.4

Observation 8251 - L2 Version 4
Chandra X-Ray Center

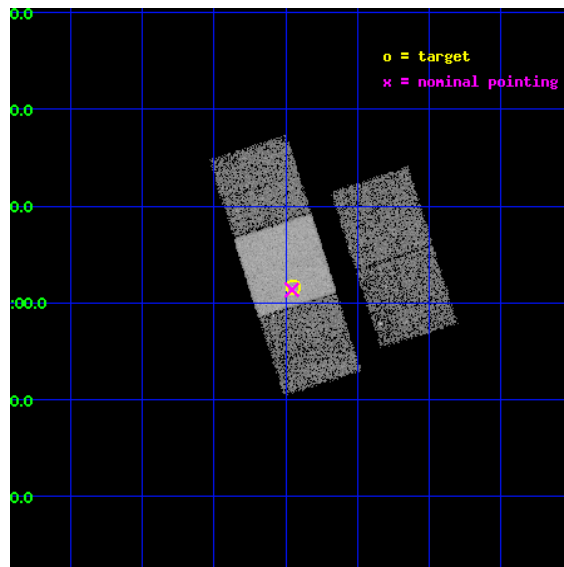
L2 Processing Date : Apr 23 2012

Contents

1	Front	2
2	OBI	3
2.1	OBI	3
2.1.1	Images	3
2.1.2	Bias	3
2.1.3	Parameters	4
2.1.4	Events	4
2.2	Compared Parameters	5
2.3	Aspect	6
2.4	Star Slots	9
2.4.1	Slot 4	9
2.4.2	Slot 5	10
2.4.3	Slot 6	11
2.4.4	Slot 7	12
2.5	FID Slots	13
2.5.1	Slot 0	13
2.5.2	Slot 1	14
2.5.3	Slot 2	15
A	Summary	16
A.1	Status	16
A.2	Comments	16

1 Front

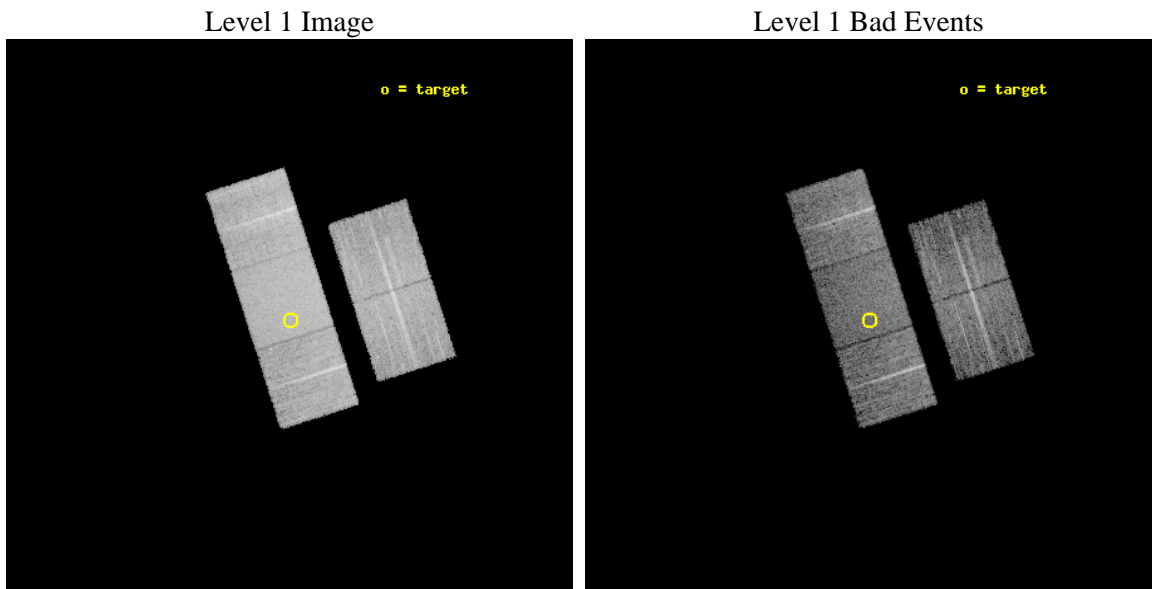
seq_num	701566	Sequence number
obs_id	8251	Observation id
title	A snapshot X-ray/radio survey of AGNs selected from the long menu of SDSS galaxies	Proposal title
observer	Dr. Sebastian Heinz	Principal investigator
object	2MASX J110957+020138	Source name
dtcycle	0	
cycle	P	events from which exps? Prim/Second/Both
ra_targ	167.488083	Observer's specified target RA [deg]
dec_targ	2.0274	Observer's specified target Dec [deg]
ra_nom	167.48925290004	Nominal RA [deg]
dec_nom	2.0226884328224	Nominal Dec [deg]
roll_nom	252.16262935595	Nominal Roll [deg]
revision	4	Processing version of data
ontime	7030.8000540733	Sum of GTIs [s]
livetime	6938.9374753672	Livetime [s]
ontime2	7030.8000540733	Sum of GTIs [s]
ontime3	7030.8000540733	Sum of GTIs [s]
ontime6	7030.8000540733	Sum of GTIs [s]
ontime7	7030.8000540733	Sum of GTIs [s]
ontime8	7030.8000540733	Sum of GTIs [s]
l2events	65404	Number of level 2 events



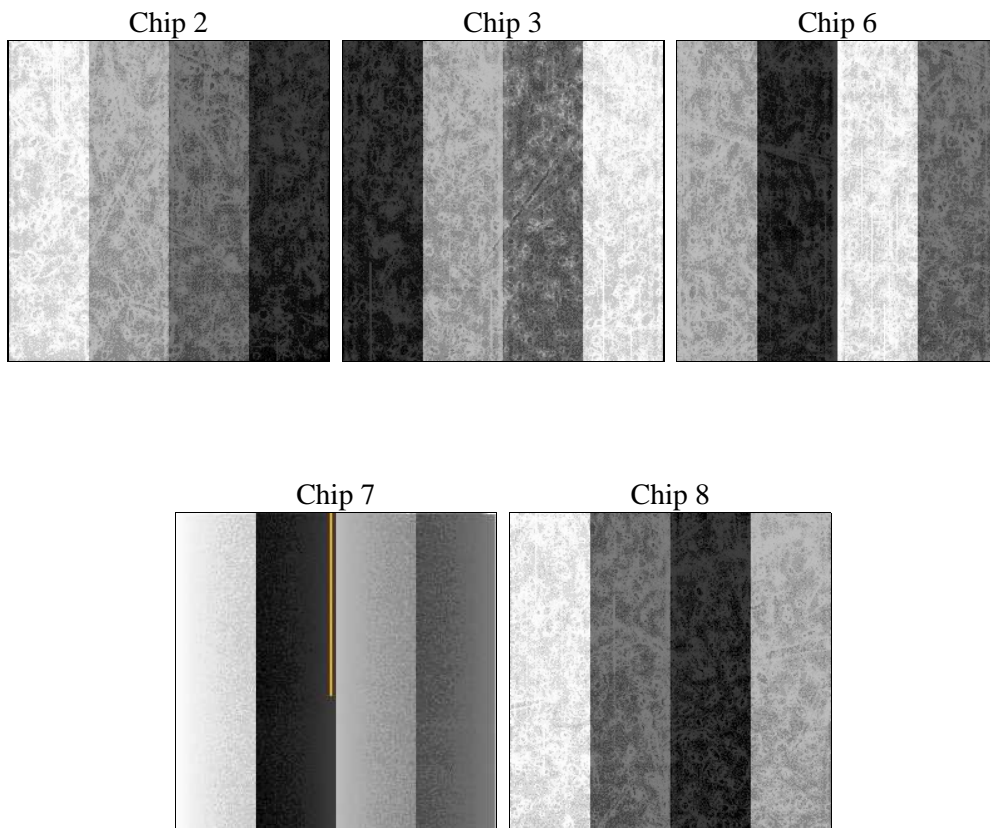
2 OBI

2.1 OBI

2.1.1 Images



2.1.2 Bias



2.1.3 Parameters

obi_num	0	Obi number	sched_exp_time	7000.000000	[s] Scheduled observation exposure time
ascdsver	8.4.4	Processing system revision	ontime	7030.8000540733	Sum of GTIs [s]
caldbver	4.4.9	 	ontime2	7030.8000540733	Sum of GTIs [s]
date	2012-04-23T18:32:42	Date and time of file creation	ontime3	7030.8000540733	Sum of GTIs [s]
revision	4	Processing version of data	ontime6	7030.8000540733	Sum of GTIs [s]
			ontime7	7030.8000540733	Sum of GTIs [s]
			ontime8	7030.8000540733	Sum of GTIs [s]
			l1events	377155	Number of level 1 events

2.1.4 Events

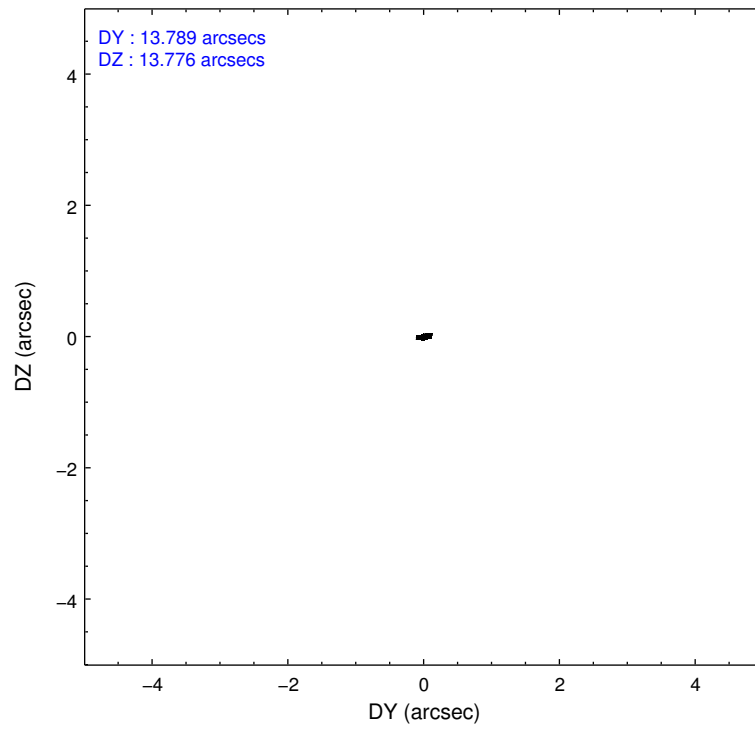
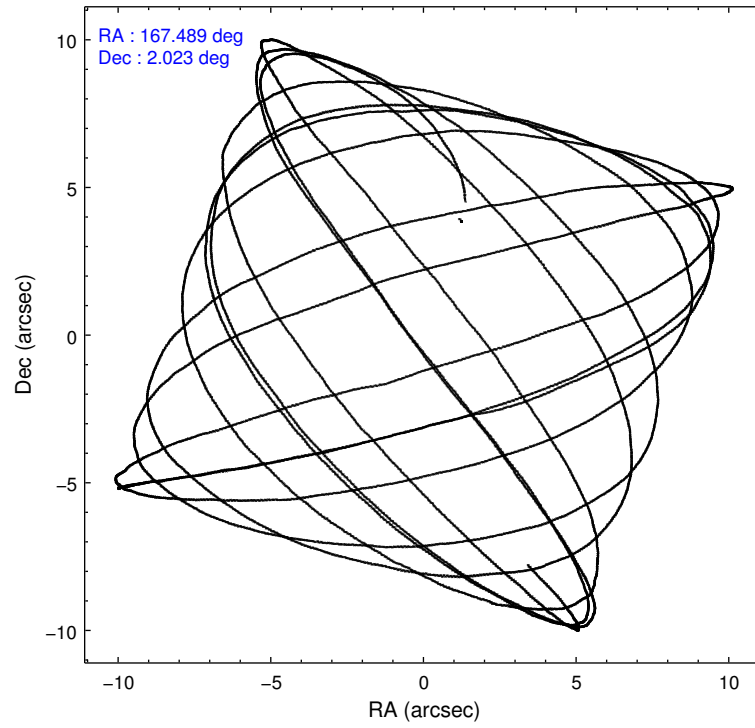
	ccd 2	ccd 3	ccd 6	ccd 7	ccd 8
level 1 events	65992	64198	67933	91048	87984
rejected events	58375	56397	59658	53428	68851
rejected %	88%	87%	87%	58%	78%

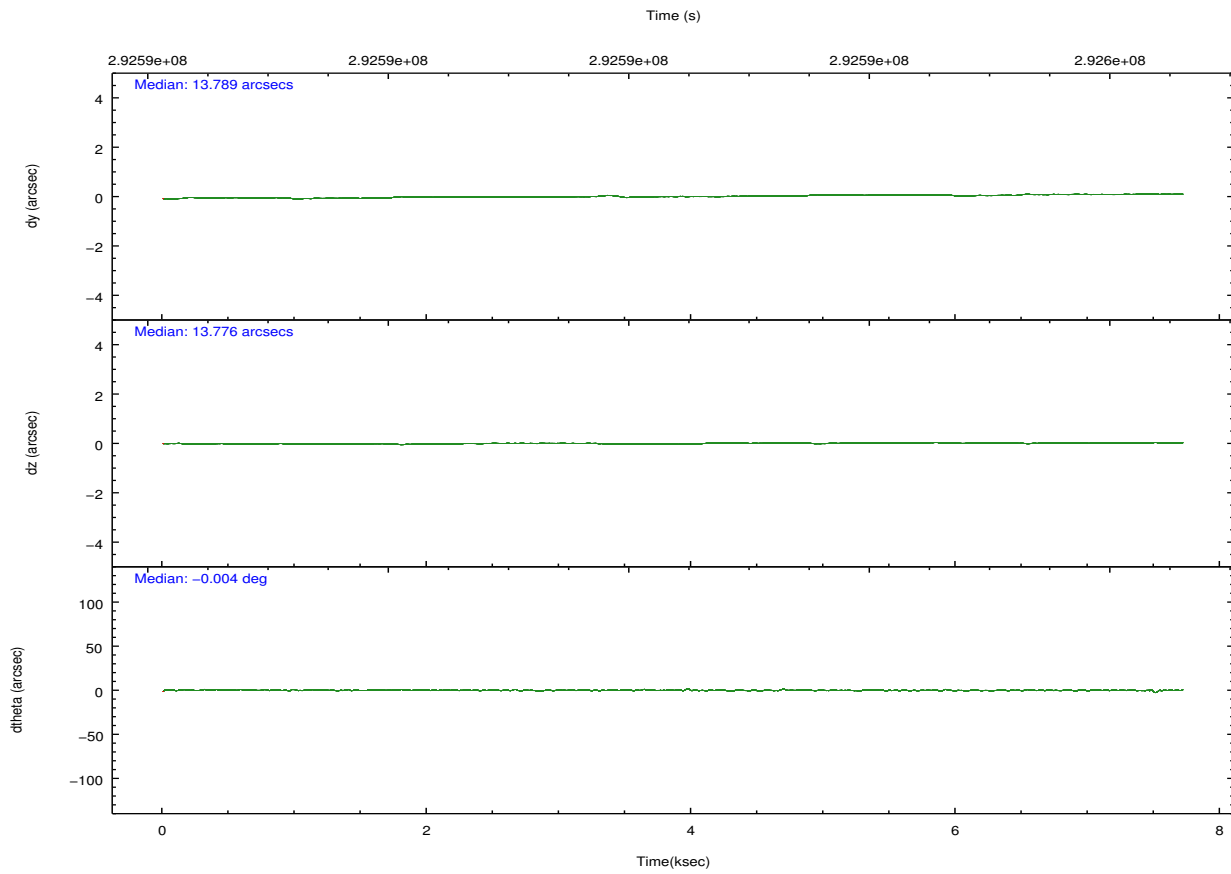
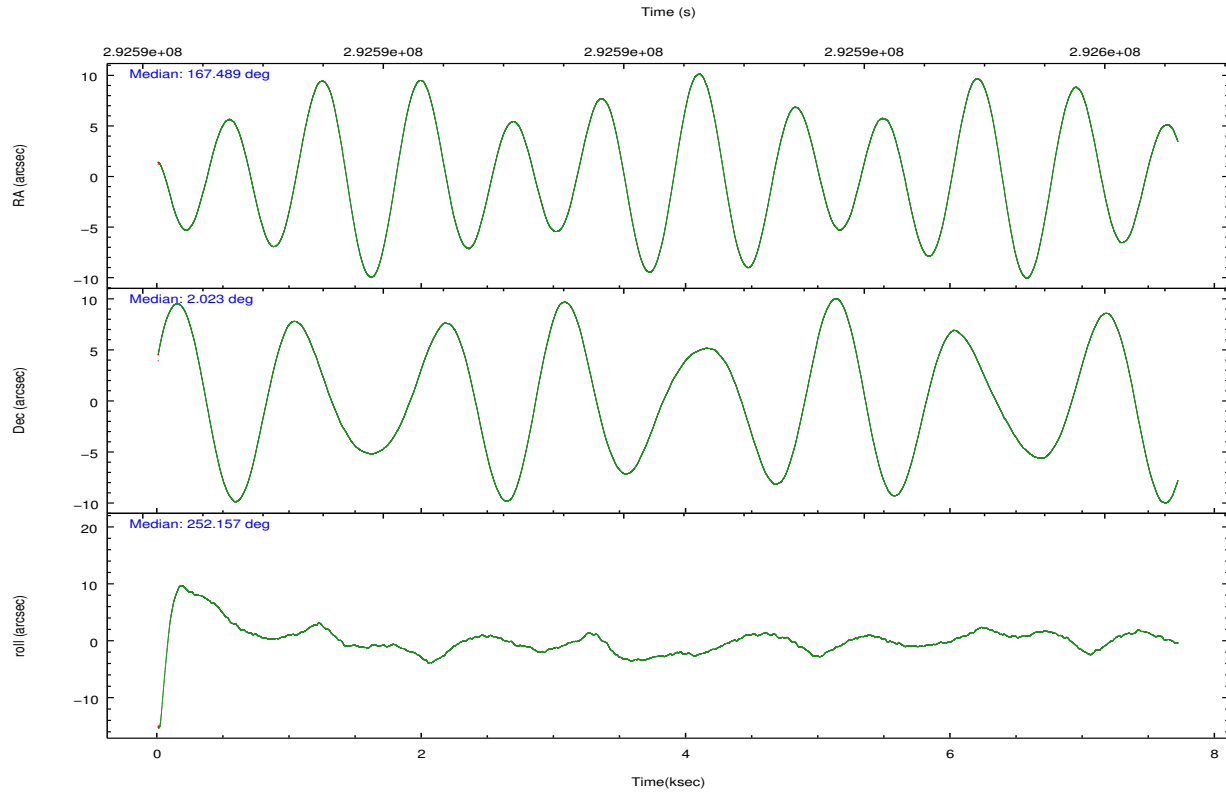
	ccd 2	ccd 3	ccd 6	ccd 7	ccd 8
grade 0 events	3228	3321	3313	3192	5708
	4%	5%	4%	3%	6%
grade 1 events	41	41	32	97	69
	0%	0%	0%	0%	0%
grade 2 events	1628	1528	1760	7624	4349
	2%	2%	2%	8%	4%
grade 3 events	758	770	798	3317	2098
	1%	1%	1%	3%	2%
grade 4 events	728	756	729	3224	1929
	1%	1%	1%	3%	2%
grade 5 events	2541	3058	3150	8693	4181
	3%	4%	4%	9%	4%
grade 6 events	1278	1431	1678	20281	5051
	1%	2%	2%	22%	5%
grade 7 events	55790	53293	56473	44620	64599
	84%	83%	83%	49%	73%

2.2 Compared Parameters

Parameter	Planned	Actual	Parameter	Planned	Actual
Instrument	ACIS	ACIS	Obspar format version number	7	7
Detector	ACIS-23678	ACIS-23678	Obspar file type	PREDICTED	ACTUAL
Grating	NONE	NONE	Obspar update status	NONE	UPDATED
Data mode	VFAINT	VFAINT	CCD I0 on	N	N
Observation mode	POINTING	POINTING	CCD I1 on	N	N
[deg] Pointing RA	167.483114	167.4892529000433	CCD I2 on	O1	Y
[deg] Pointing Dec	2.049342	2.02268843282245	CCD I3 on	O2	Y
[deg] Pointing Roll	252.006245	252.16262935595	CCD S0 on	N	N
[mm] SIM focus pos	-0.684267	-0.6828225247311905	CCD S1 on	N	N
[mm] SIM defocus	0	0.001444936568705701	CCD S2 on	O4	Y
[mm] SIM translation stage pos	-190.132523	-190.1425803651734	CCD S3 on	Y	Y
[mm] SIM translation stage offset	0	0.01005778216563158	CCD S4 on	O3	Y
[s] Observation start time (MET)	292589237.184000	292588045.37572	CCD S5 on	N	N
Observation start date	2007-04-10T10:46:12	2007-04-10T10:27:25	Number of optional ACIS chips dropped	0	0
[s] Observation end time (MET)	292596237.184000	292596656.40113	On-chip summing requested	N	N
Observation end date	2007-04-10T12:42:52	2007-04-10T12:50:56	Subarray requested	NONE	NONE
Read mode	TIMED	TIMED	Alternating exposures requested	N	N
			[s] Primary exposure time	0.000000	3.1

2.3 Aspect



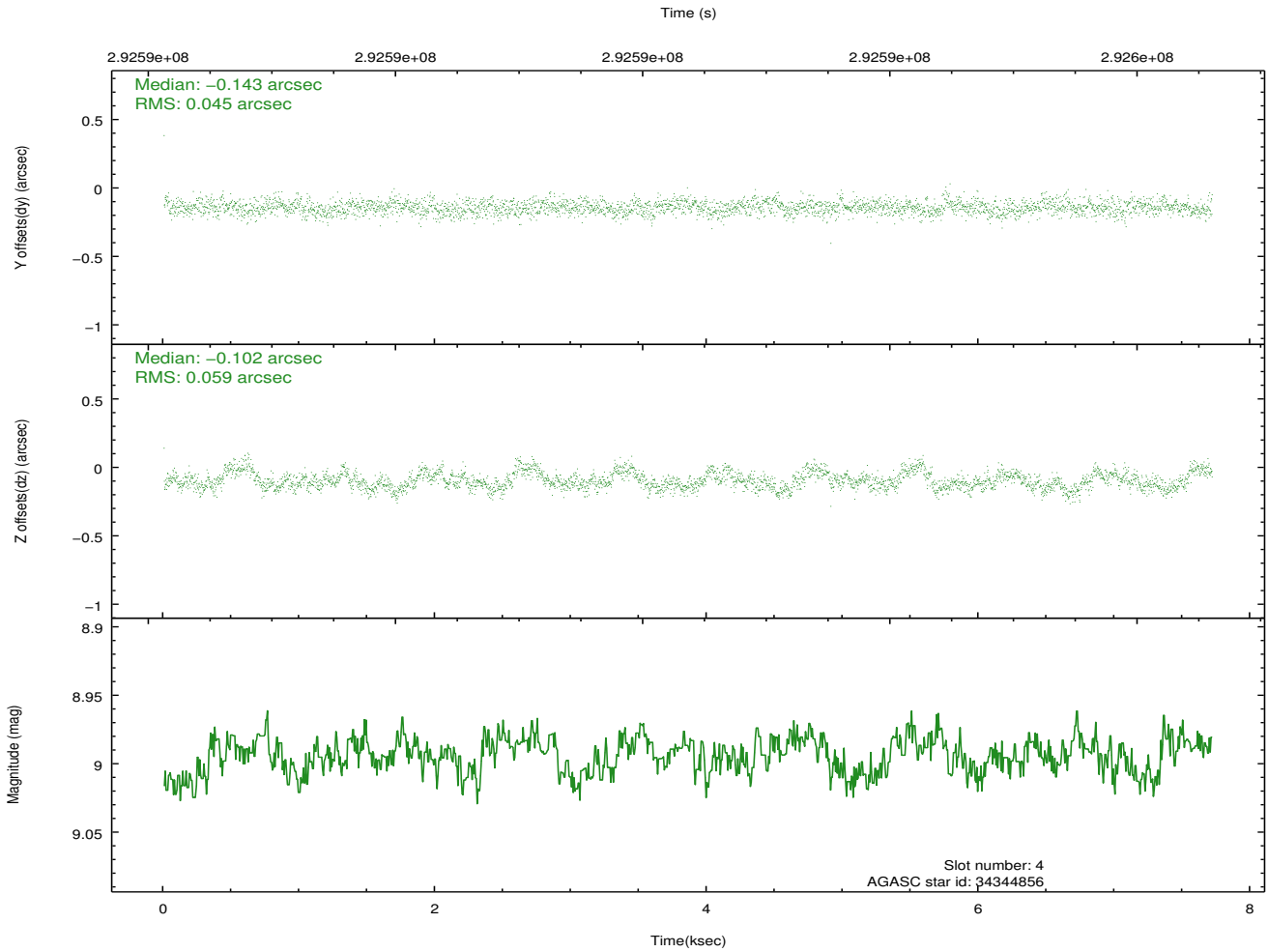
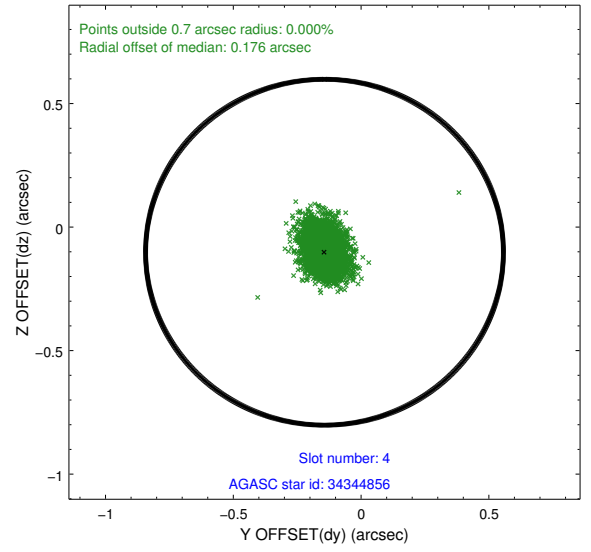
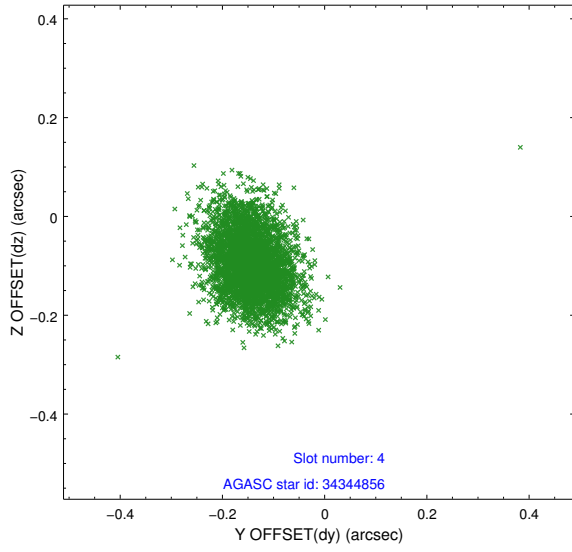


Slot Statistics

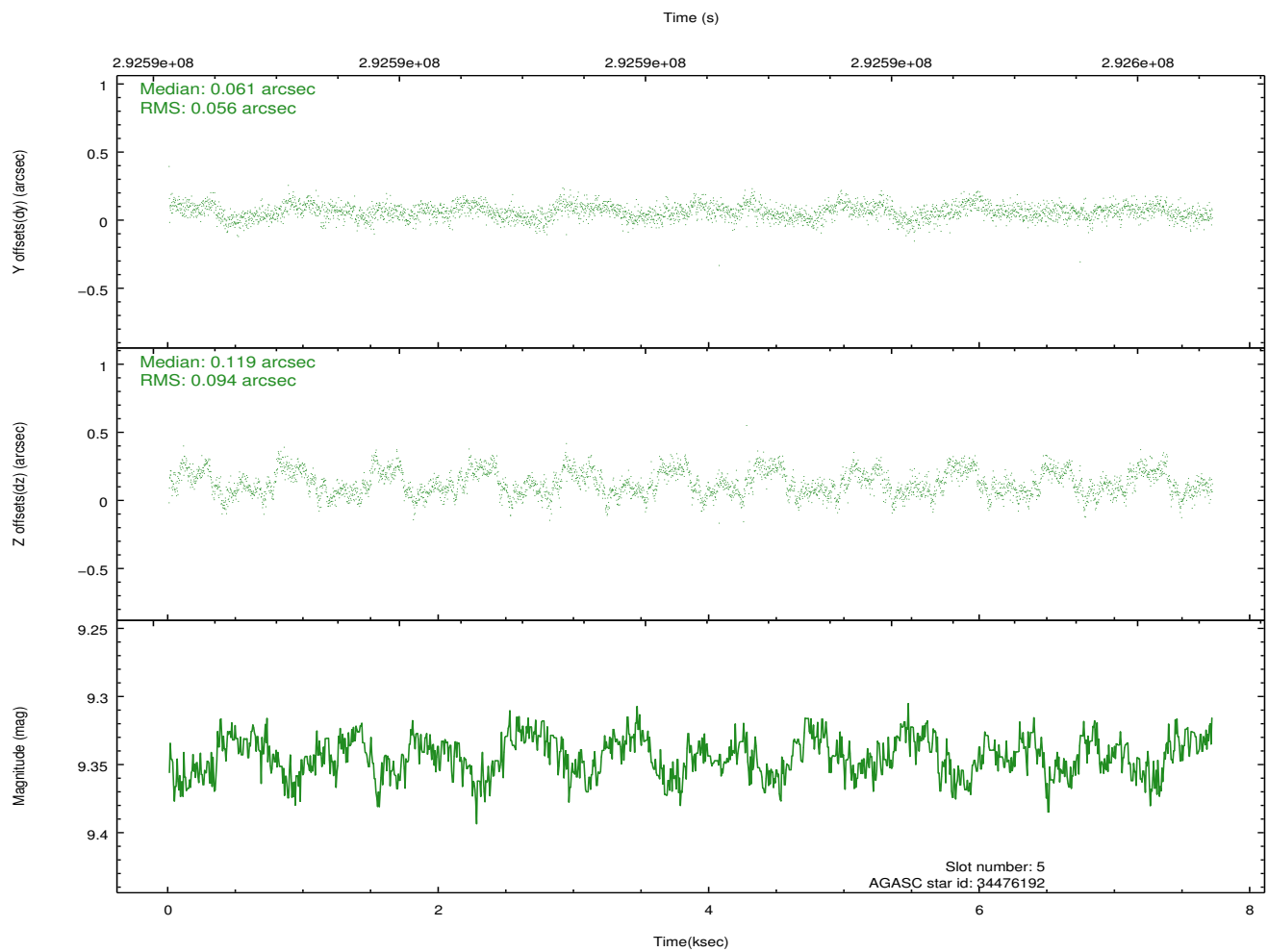
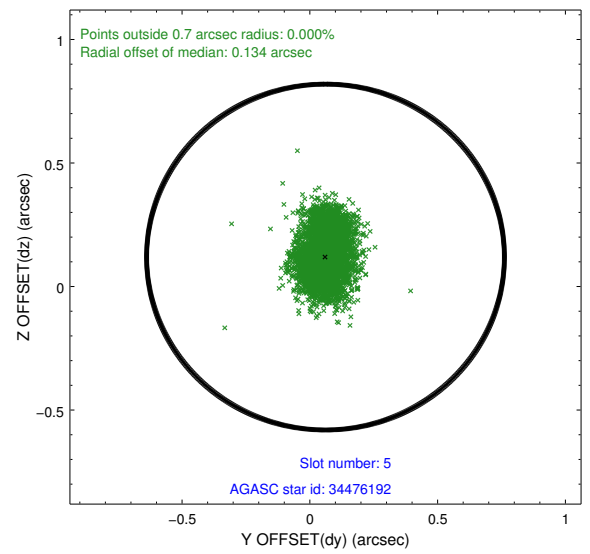
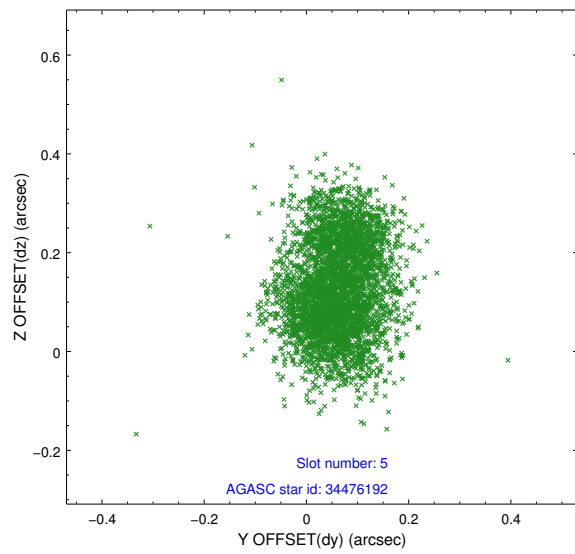
slot	status	id	mag	n_pts	med_dy	med_dz	dr1	dr2	ra	dec	mean_y	mean_z
0	FID	ACIS-S-2	7.10	1881	-0.049	-0.061	0.007	0.012	0.000000	0.000000	-766.79	-1735.12
1	FID	ACIS-S-4	7.19	1882	0.190	0.040	0.006	0.011	0.000000	0.000000	2146.40	172.69
2	FID	ACIS-S-5	7.23	1882	-0.173	0.030	0.007	0.013	0.000000	0.000000	-1818.81	167.20
3	OMITTED		0.00	0	0.000	0.000	0.000	0.000	0.000000	0.000000	0.00	0.00
4	GUIDE	34344856	8.99	3762	-0.143	-0.102	0.078	0.128	167.129021	1.539028	2141.04	-644.37
5	GUIDE	34476192	9.34	3760	0.061	0.119	0.118	0.187	167.880811	2.061494	-482.83	1347.54
6	GUIDE	34873328	8.92	3699	-0.003	-0.125	0.076	0.124	167.890264	2.536951	-2122.09	850.59
7	GUIDE	34343904	9.94	3759	0.082	0.086	0.120	0.194	167.254051	1.596077	1806.45	-279.08

2.4 Star Slots

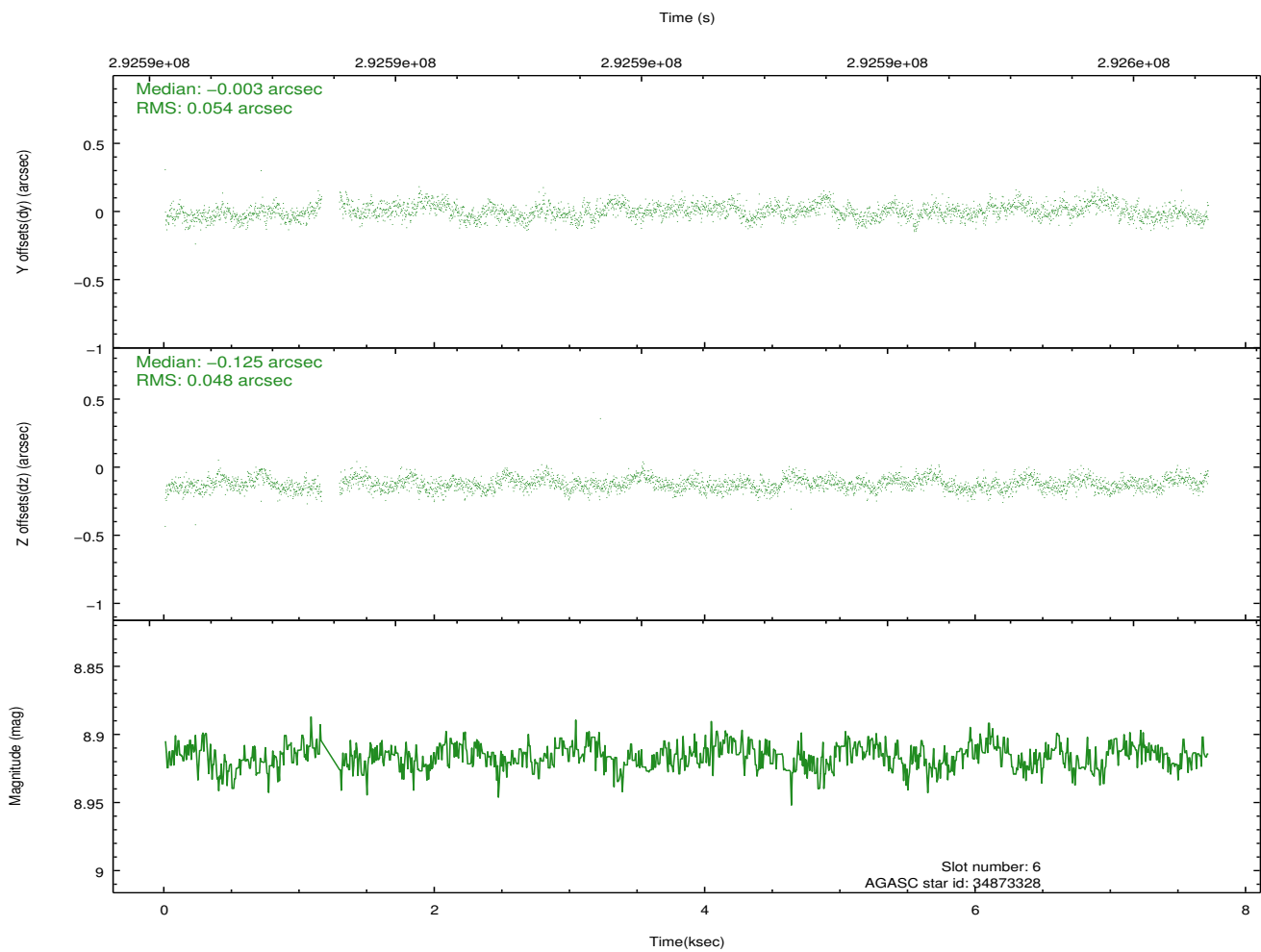
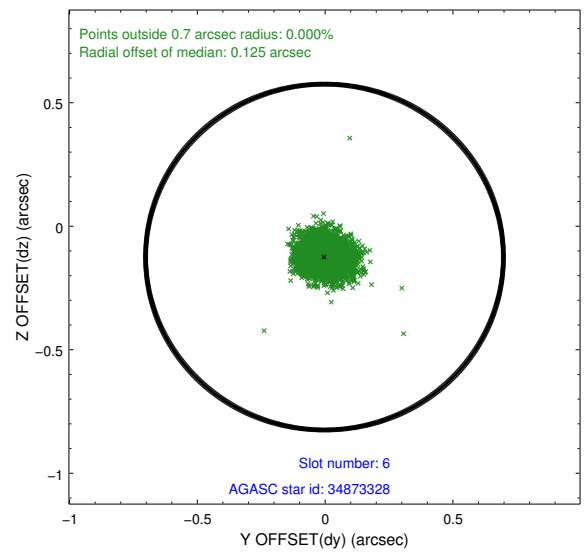
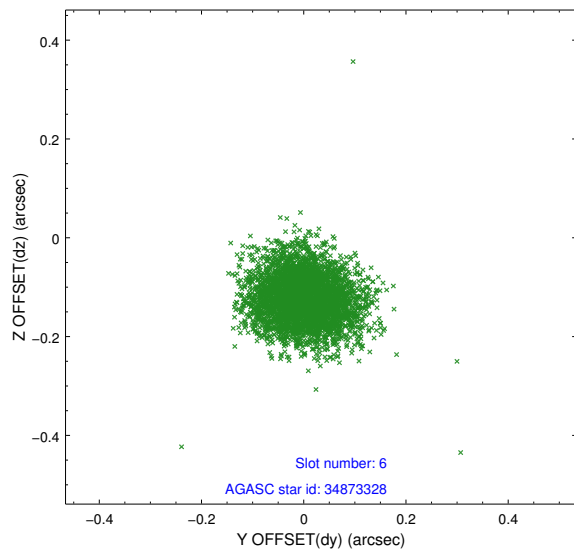
2.4.1 Slot 4



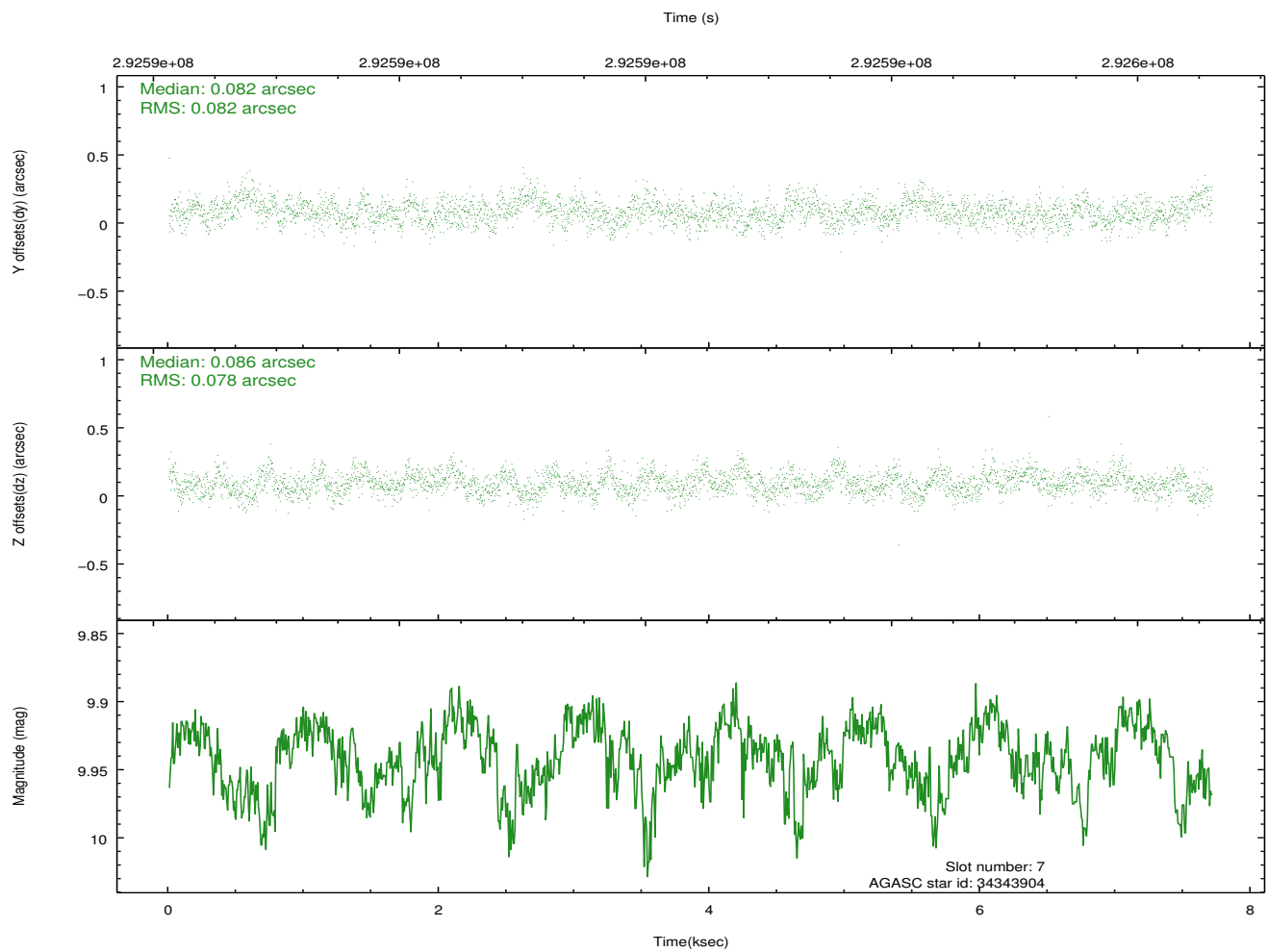
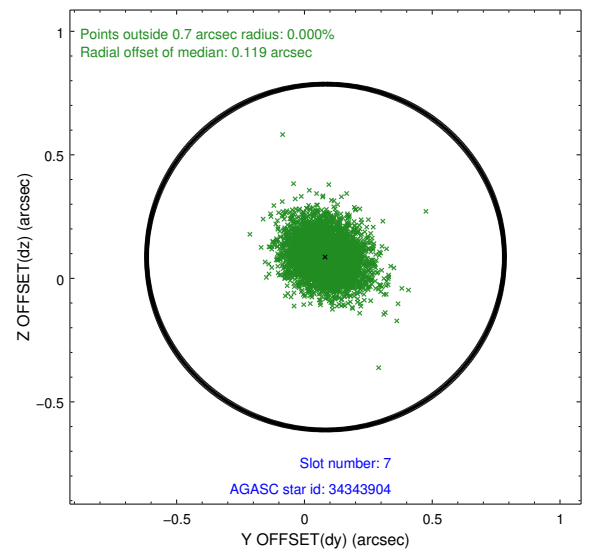
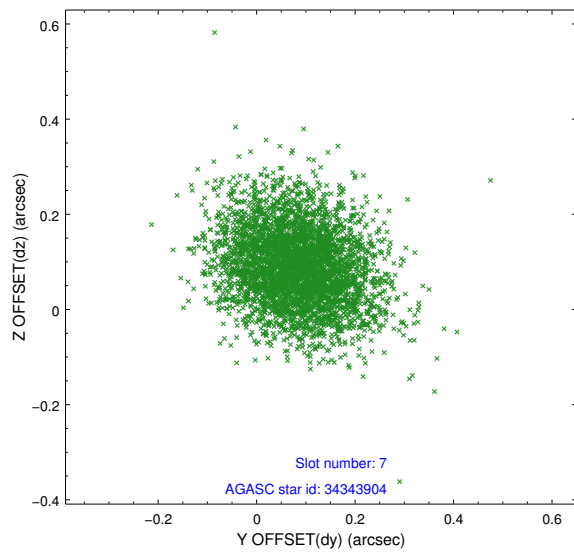
2.4.2 Slot 5



2.4.3 Slot 6

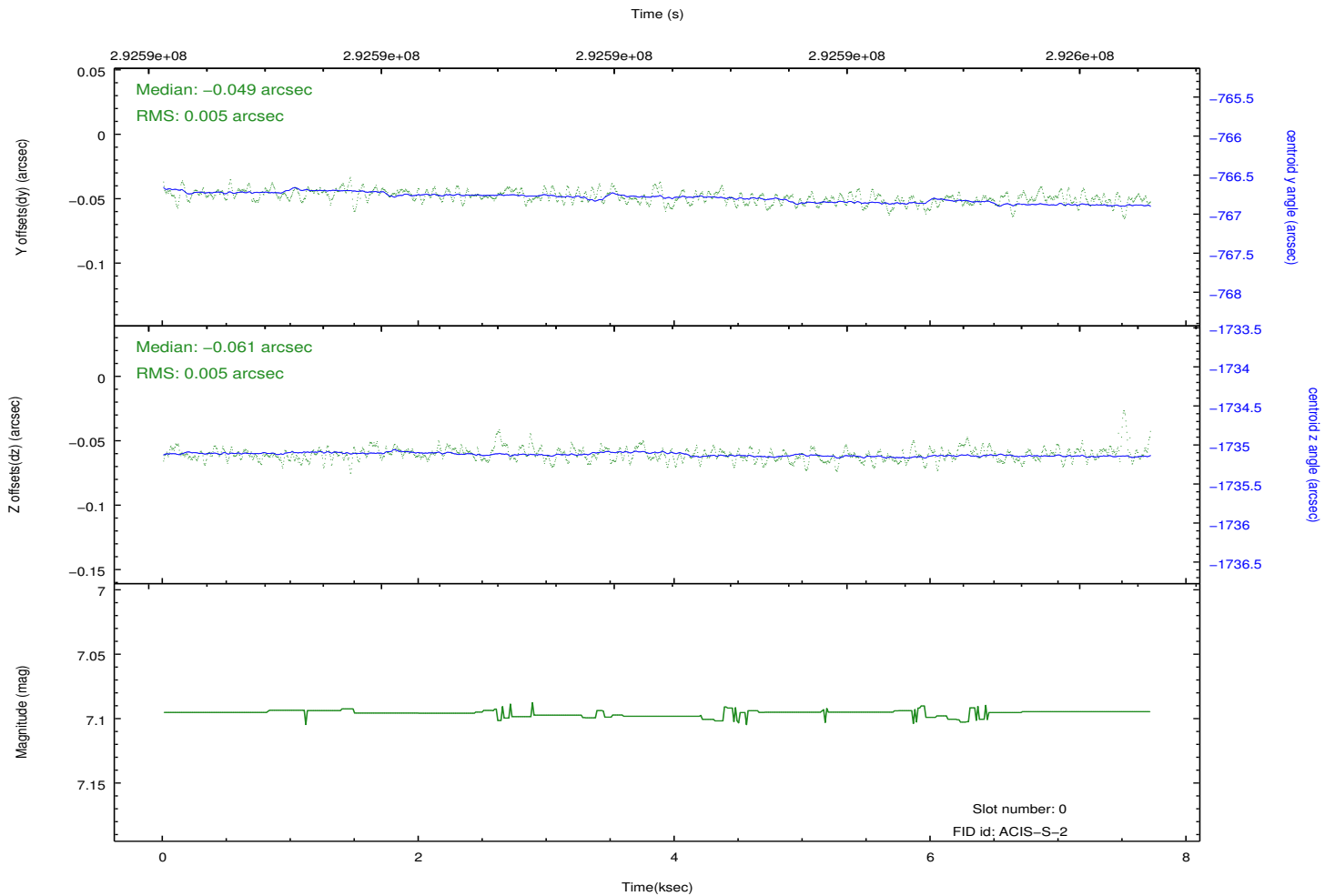
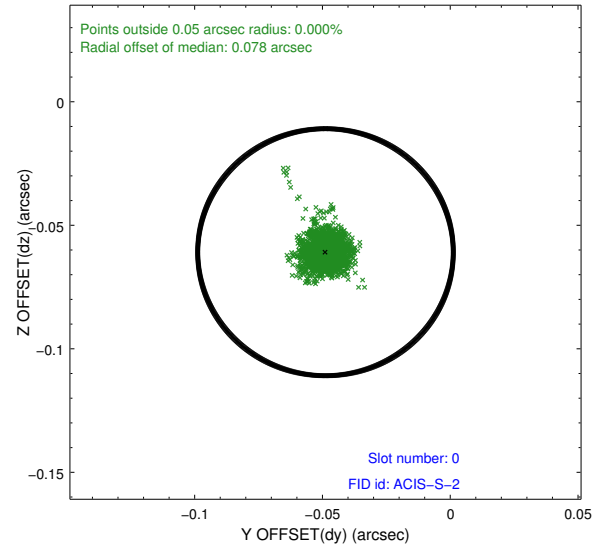
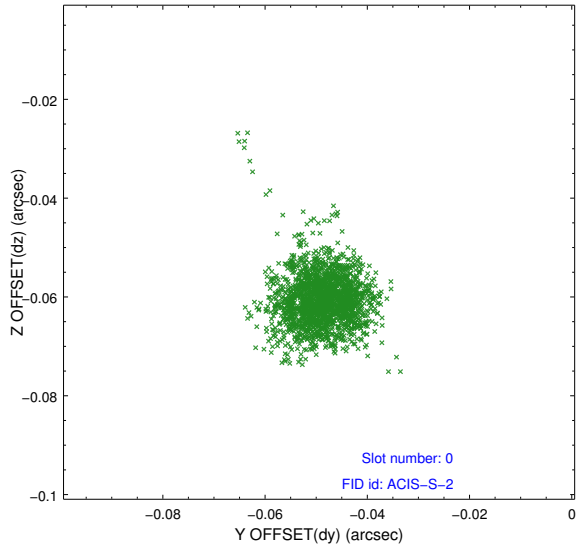


2.4.4 Slot 7

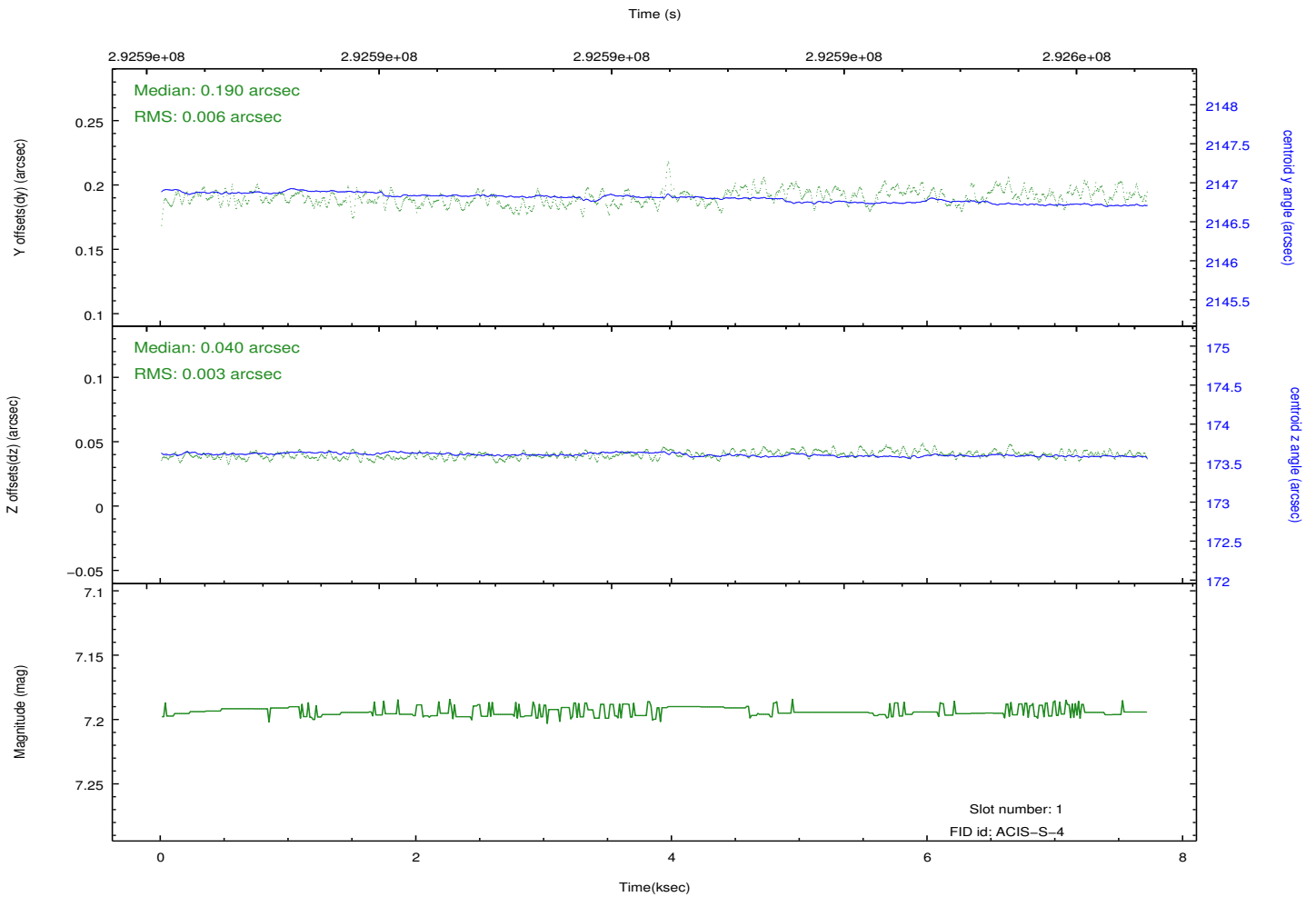
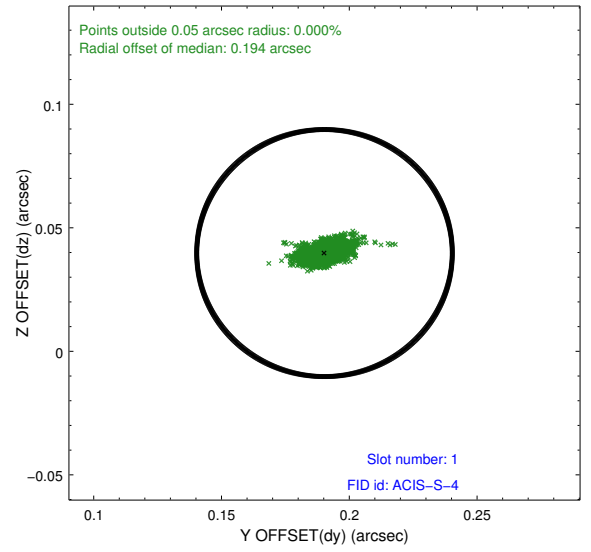
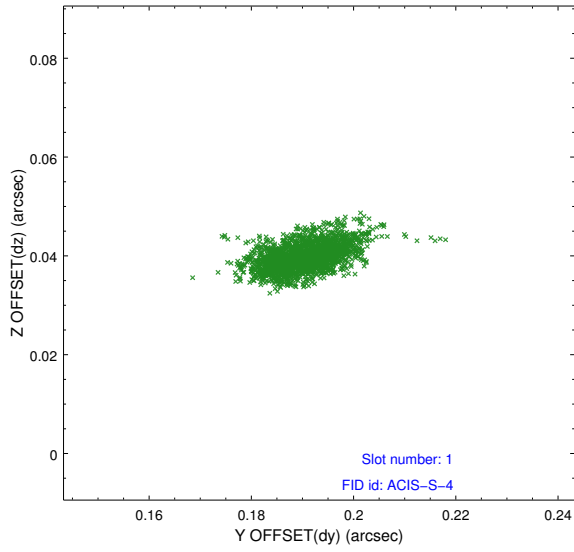


2.5 FID Slots

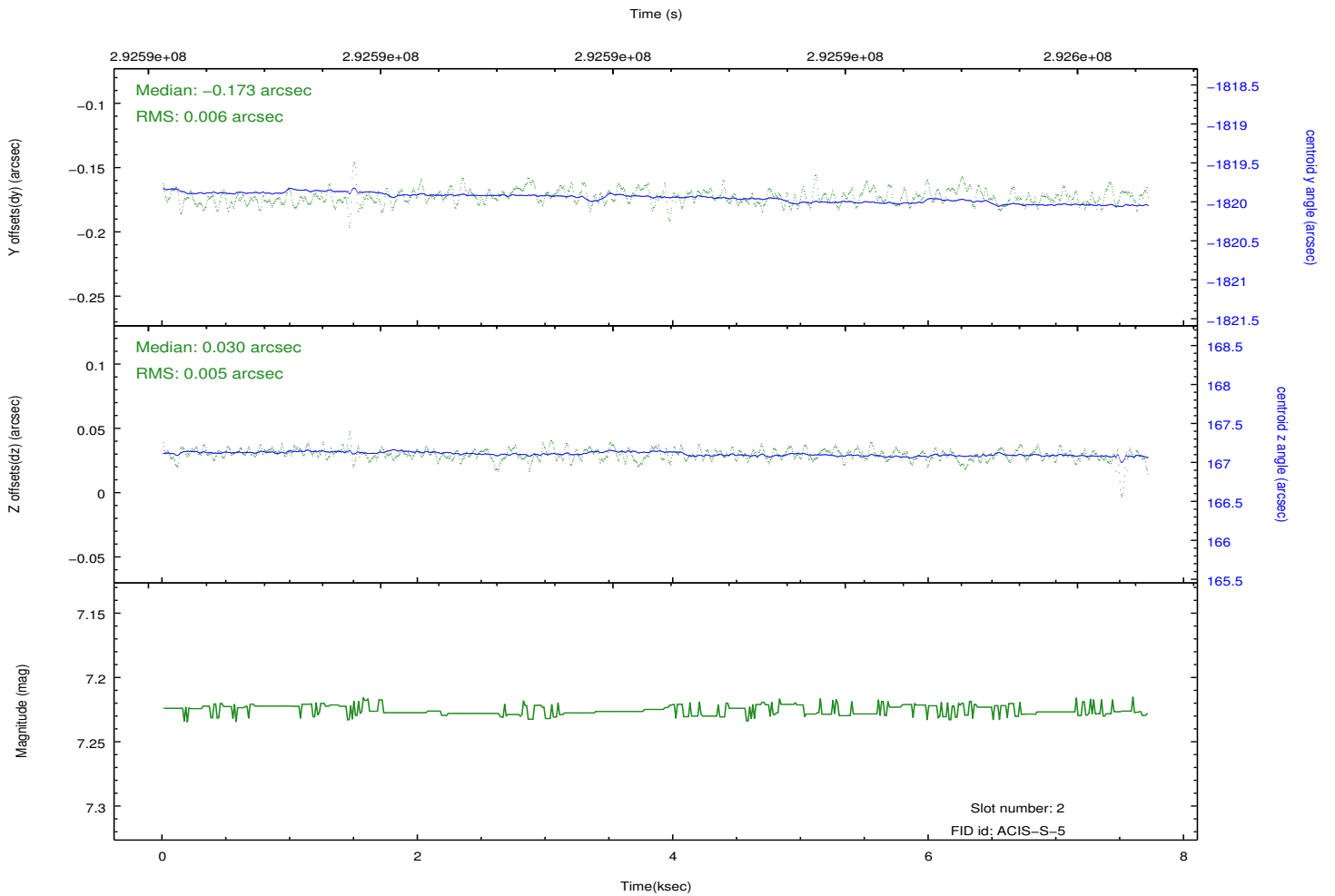
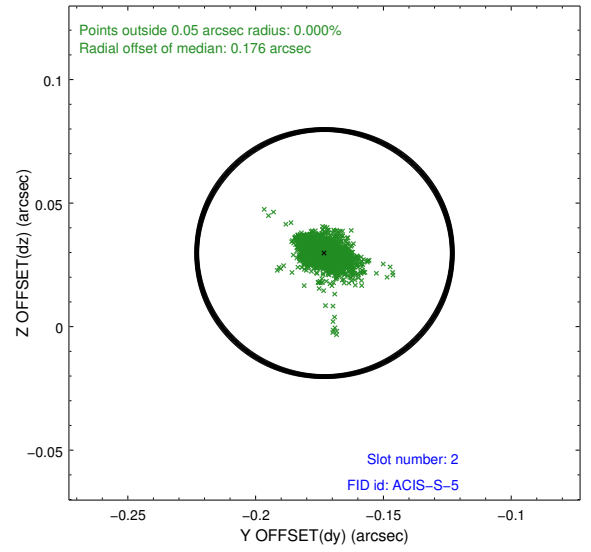
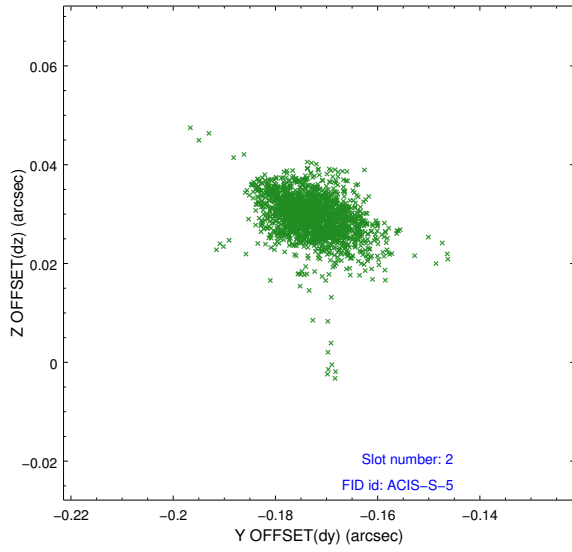
2.5.1 Slot 0



2.5.2 Slot 1



2.5.3 Slot 2



A Summary

A.1 Status

V&V Scientist	Beth Sundheim
V&V Date (YYYY-MM-DD)	2012.04.24
V&V Edition	1
V&V Disposition and Status	OK
V&V Charge Time	7.03080005

A.2 Comments

Joint proposal with NRAO.

The guide star in slot 3 was removed from the aspect solution due to poor data quality. The aspect solution is improved by the removal of this star from the solution.