

# V&V Reference Report

## L2 ASCDS Version : 8.4.4

Observation 8521 - L2 Version 3  
Chandra X-Ray Center

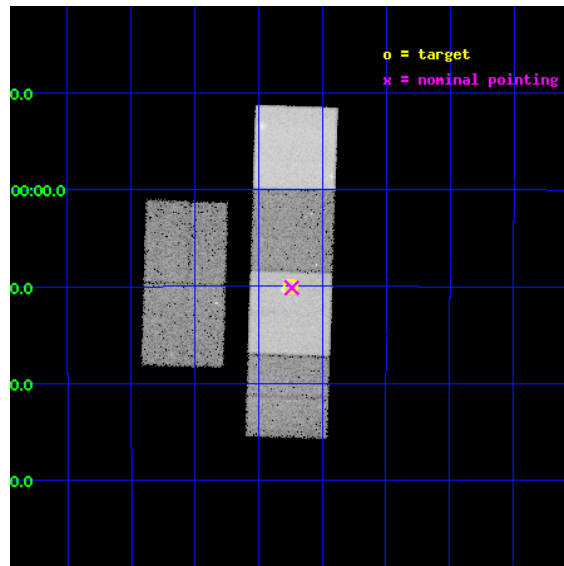
L2 Processing Date : Apr 21 2012

## Contents

<b>1</b>	<b>Front</b>	<b>2</b>
<b>2</b>	<b>OBI</b>	<b>3</b>
2.1	OBI . . . . .	3
2.1.1	Images . . . . .	3
2.1.2	Bias . . . . .	3
2.1.3	Parameters . . . . .	4
2.1.4	Events . . . . .	4
2.2	Compared Parameters . . . . .	5
2.3	Aspect . . . . .	6
2.4	Star Slots . . . . .	9
2.4.1	Slot 3 . . . . .	9
2.4.2	Slot 4 . . . . .	10
2.4.3	Slot 5 . . . . .	11
2.4.4	Slot 6 . . . . .	12
2.4.5	Slot 7 . . . . .	13
2.5	FID Slots . . . . .	14
2.5.1	Slot 0 . . . . .	14
2.5.2	Slot 1 . . . . .	15
2.5.3	Slot 2 . . . . .	16
<b>A</b>	<b>Summary</b>	<b>17</b>
A.1	Status . . . . .	17
A.2	Comments . . . . .	17

# 1 Front

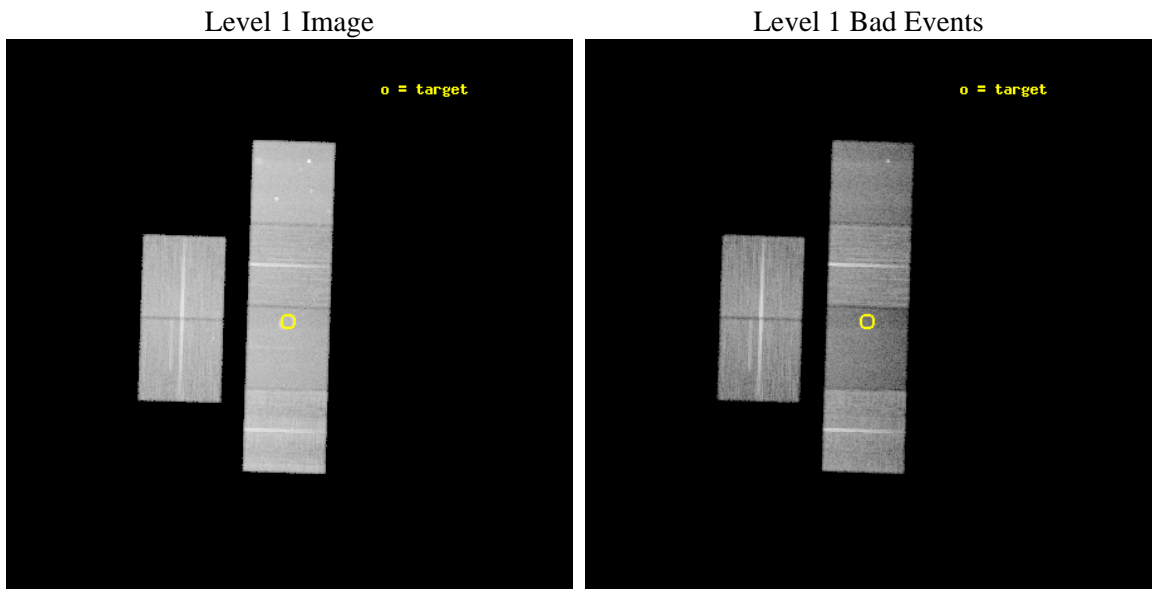
seq_num	500659	Sequence number
obs_id	8521	Observation id
title	Small-Diameter Galactic Supernova Remnants: The Missing Young Remnants?	Proposal title
observer	Dr. Stephen Reynolds	Principal investigator
object	G1.9+0.3	Source name
dtcycle	0	&#160
cycle	P	events from which exps? Prim/Second/Both
ra_targ	267.1875	Observer's specified target RA [deg]
dec_targ	-27.166667	Observer's specified target Dec [deg]
ra_nom	267.18470958349	Nominal RA [deg]
dec_nom	-27.169148518204	Nominal Dec [deg]
roll_nom	91.785368025223	Nominal Roll [deg]
revision	3	Processing version of data
ontime	26057.449217737	Sum of GTIs [s]
livetime	25727.49410583	Livetime [s]
ontime2	26057.49025774	Sum of GTIs [s]
ontime3	26054.085107565	Sum of GTIs [s]
ontime5	26057.408177733	Sum of GTIs [s]
ontime6	26057.36713773	Sum of GTIs [s]
ontime7	26057.449217737	Sum of GTIs [s]
ontime8	26057.285057724	Sum of GTIs [s]
l2events	286389	Number of level 2 events



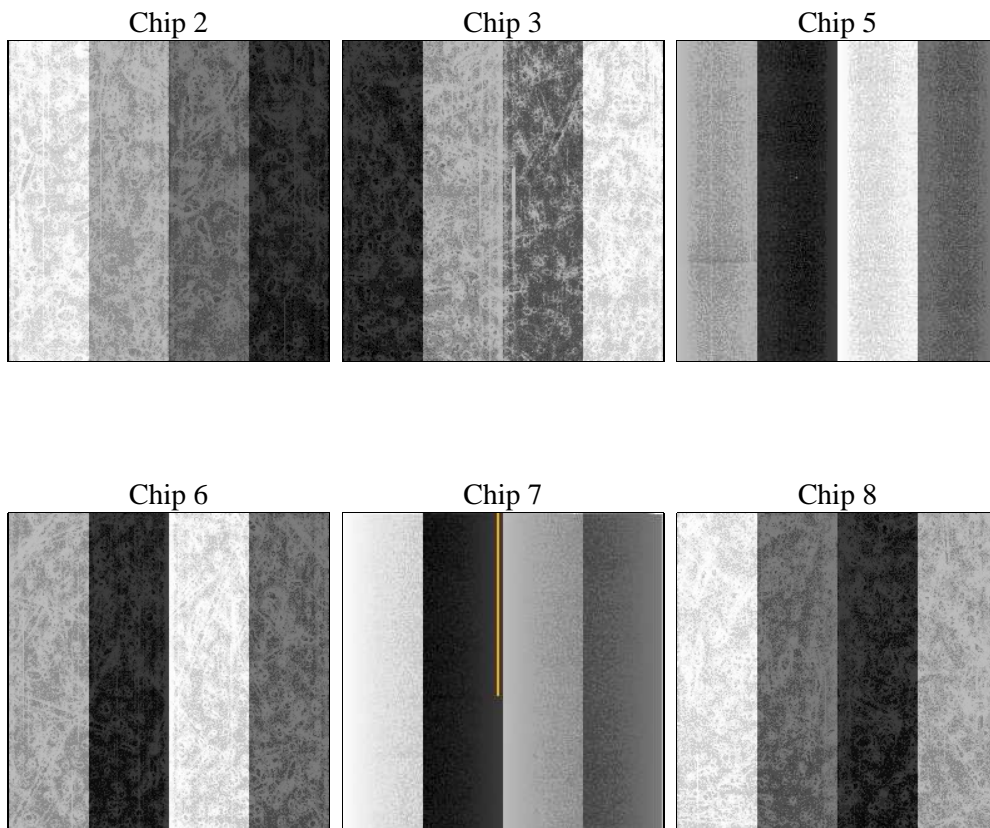
## 2 OBI

### 2.1 OBI

#### 2.1.1 Images



#### 2.1.2 Bias



### 2.1.3 Parameters

obi_num	0	Obi number	sched_exp_time	26000.000000	[s] Scheduled observation exposure time
ascdsver	8.4.4	Processing system revision	ontime	26057.449217737	Sum of GTIs [s]
caldbver	4.4.9	&#160	ontime2	26057.49025774	Sum of GTIs [s]
date	2012-04-21T01:31:56	Date and time of file creation	ontime3	26054.085107565	Sum of GTIs [s]
revision	3	Processing version of data	ontime5	26057.408177733	Sum of GTIs [s]
			ontime6	26057.36713773	Sum of GTIs [s]
			ontime7	26057.449217737	Sum of GTIs [s]
			ontime8	26057.285057724	Sum of GTIs [s]
			l1events	1234316	Number of level 1 events

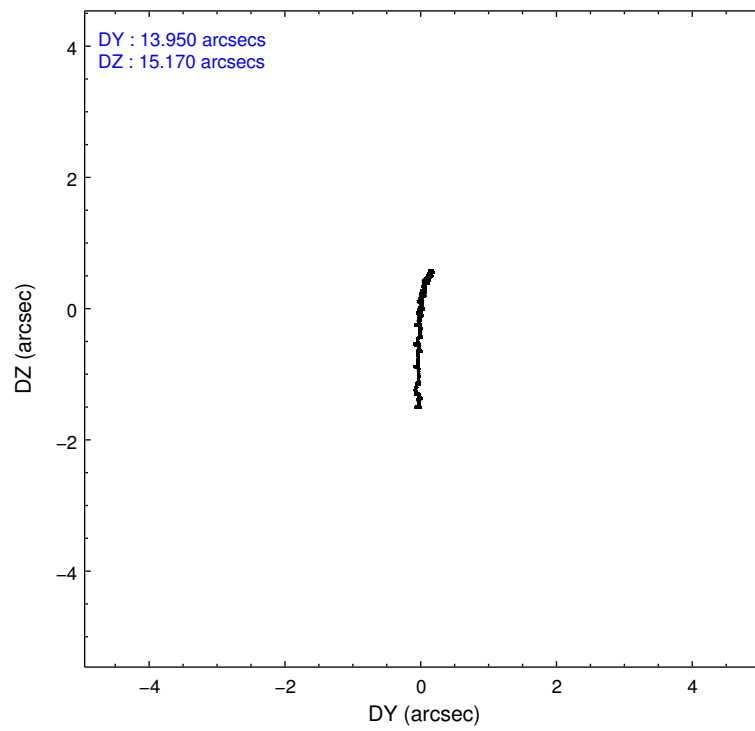
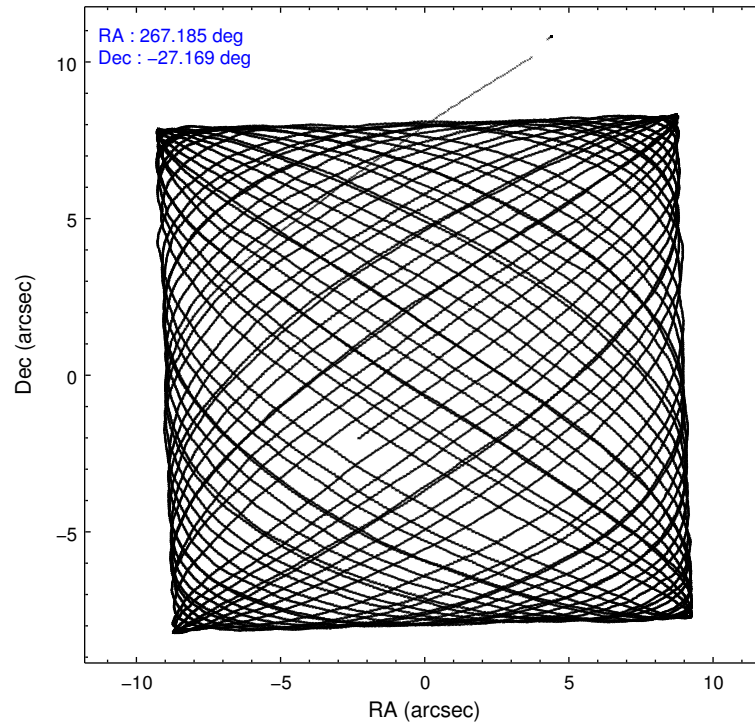
### 2.1.4 Events

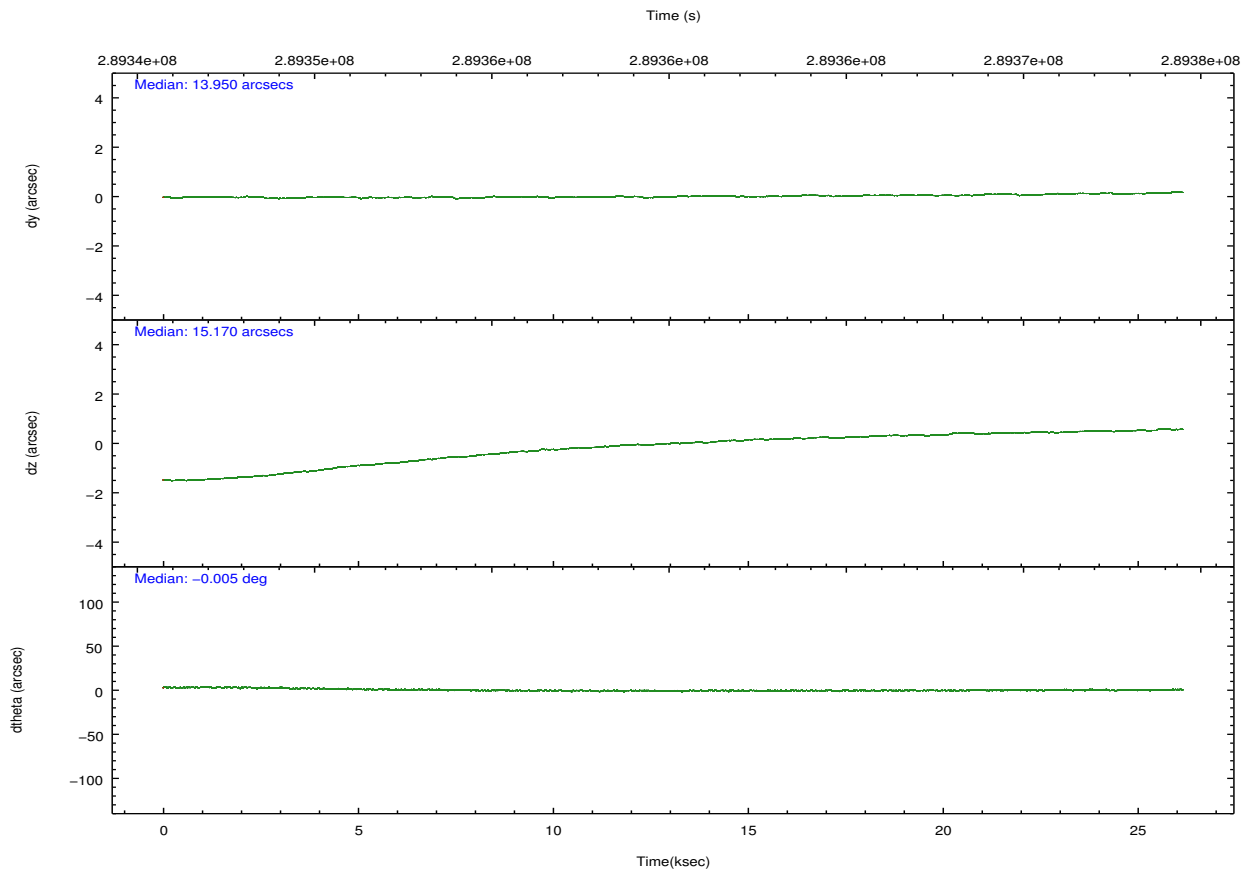
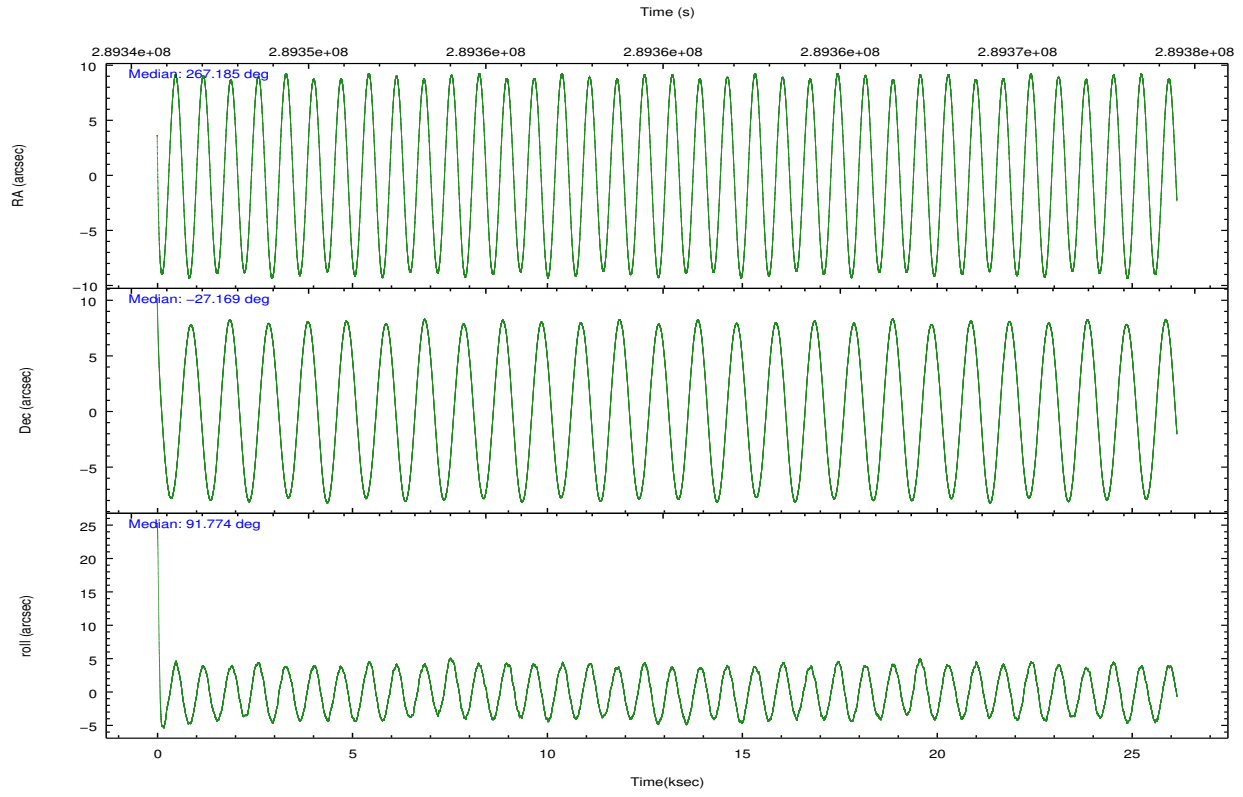
	ccd 2	ccd 3	ccd 5	ccd 6	ccd 7	ccd 8		ccd 2	ccd 3	ccd 5	ccd 6	ccd 7	ccd 8
level 1 events	201540	183040	239354	191394	184961	234027	grade 0 events	7971	7422	14334	9423	10412	16904
rejected events	181584	164283	110170	168966	90226	174134		3%	4%	5%	4%	5%	7%
rejected %	90%	89%	46%	88%	48%	74%	grade 1 events	119	103	975	98	278	173
								0%	0%	0%	0%	0%	0%
							grade 2 events	4619	3823	39066	4677	20245	14298
								2%	2%	16%	2%	10%	6%
							grade 3 events	2013	2104	6167	2144	9076	6567
								0%	1%	2%	1%	4%	2%
							grade 4 events	2054	2072	6132	2206	9100	6003
								1%	1%	2%	1%	4%	2%
							grade 5 events	5371	6105	19347	6429	19178	9921
								2%	3%	8%	3%	10%	4%
							grade 6 events	3299	3336	63499	3980	45914	16123
								1%	1%	26%	2%	24%	6%
							grade 7 events	176094	158075	89834	162437	70758	164038
								87%	86%	37%	84%	38%	70%

## 2.2 Compared Parameters

Parameter	Planned	Actual	Parameter	Planned	Actual
Instrument	ACIS	ACIS	Obspar format version number	7	7
Detector	ACIS-235678	ACIS-235678	Obspar file type	PREDICTED	ACTUAL
Grating	NONE	NONE	Obspar update status	NONE	UPDATED
Data mode	VFAINT	VFAINT	CCD I0 on	N	N
Observation mode	POINTING	POINTING	CCD I1 on	N	N
[deg] Pointing RA	267.201262	267.1847095834856	CCD I2 on	Y	Y
[deg] Pointing Dec	-27.192194	-27.16914851820351	CCD I3 on	Y	Y
[deg] Pointing Roll	91.636289	91.78536802522308	CCD S0 on	N	N
[mm] SIM focus pos	-0.684267	-0.6828225247311905	CCD S1 on	O1	Y
[mm] SIM defocus	0	0.001444936568705701	CCD S2 on	Y	Y
[mm] SIM translation stage pos	-190.132523	-190.1425803651734	CCD S3 on	Y	Y
[mm] SIM translation stage offset	0	0.01005778216563158	CCD S4 on	Y	Y
[s] Observation start time (MET)	289347188.184000	289346028.6464	CCD S5 on	N	N
Observation start date	2007-03-03T22:12:03	2007-03-03T21:53:48	Number of optional ACIS chips dropped	0	0
[s] Observation end time (MET)	289373188.184000	289374049.07273	On-chip summing requested	N	N
Observation end date	2007-03-04T05:25:23	2007-03-04T05:40:49	Subarray requested	NONE	NONE
Read mode	TIMED	TIMED	Alternating exposures requested	N	N
			[s] Primary exposure time	0.000000	3.2

## 2.3 Aspect



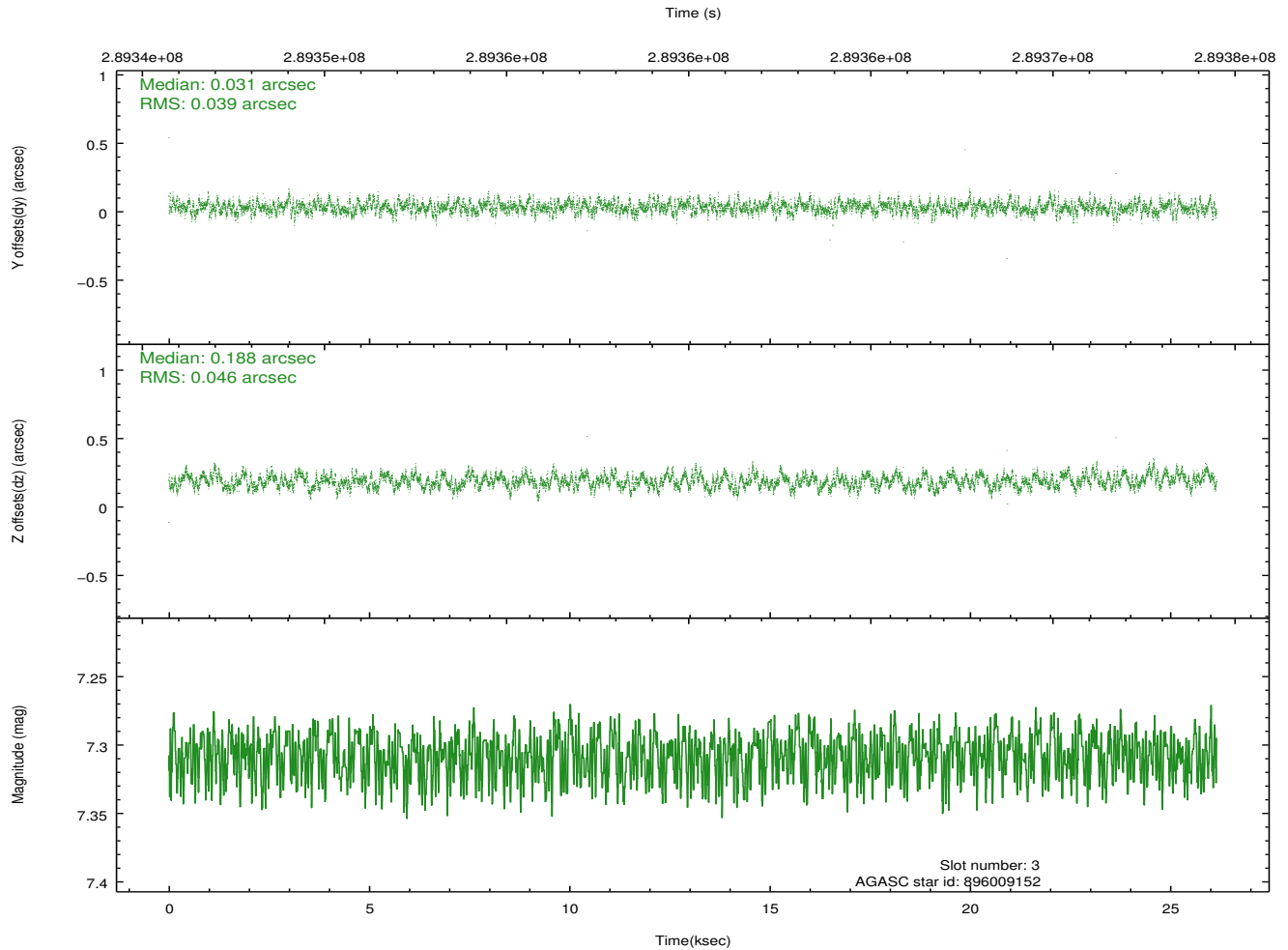
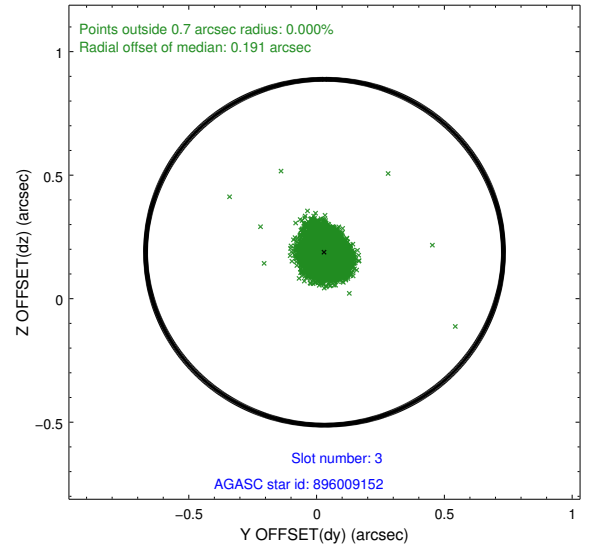
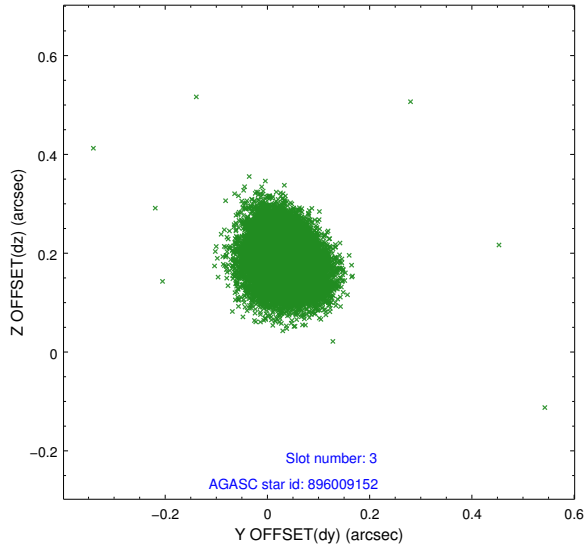


### Slot Statistics

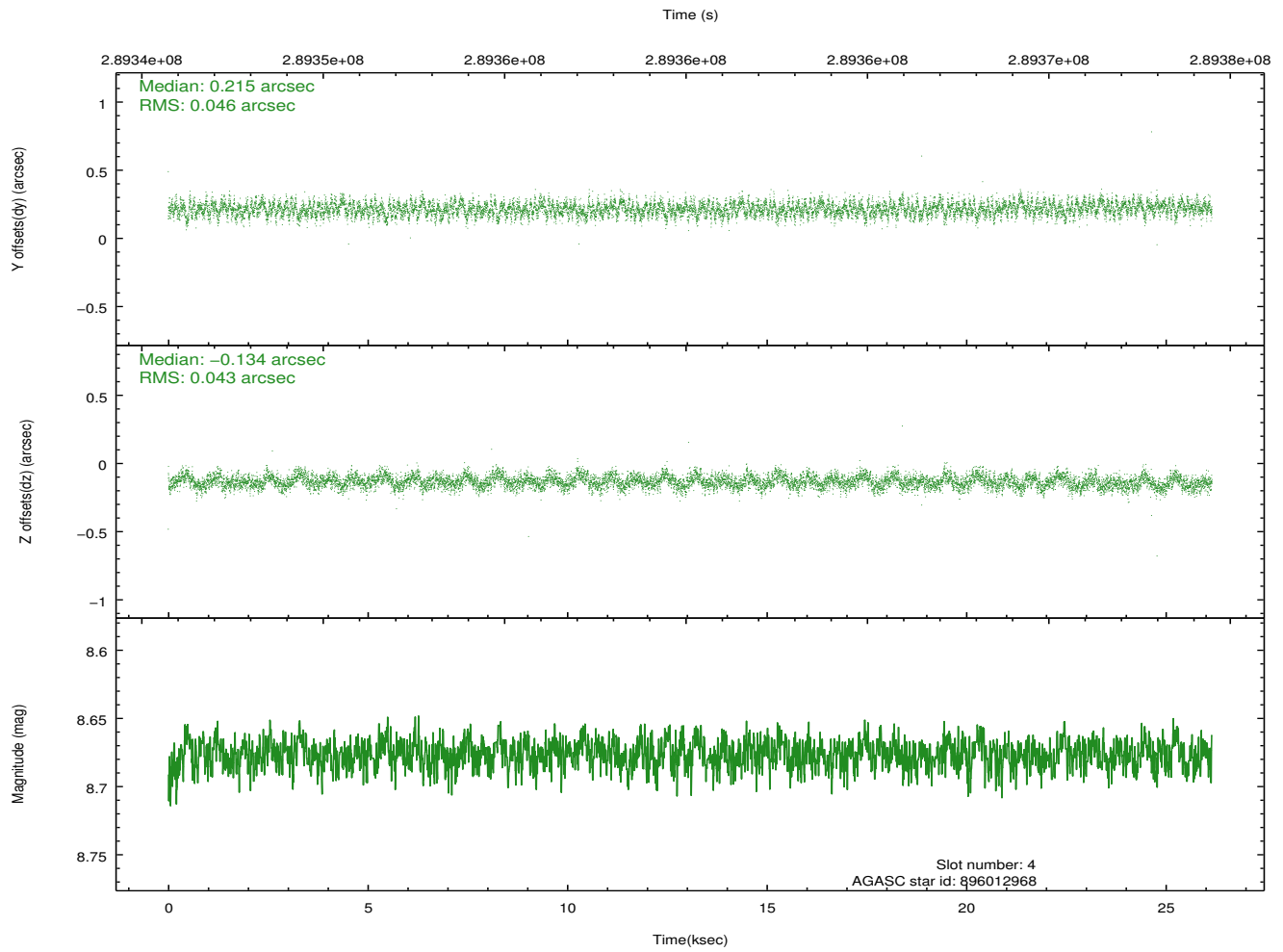
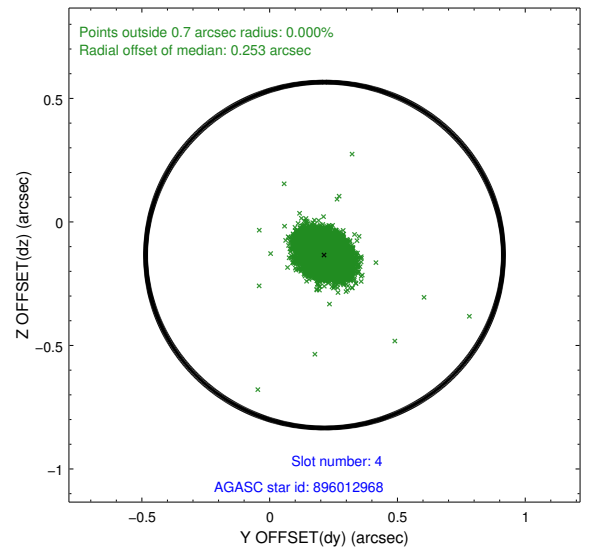
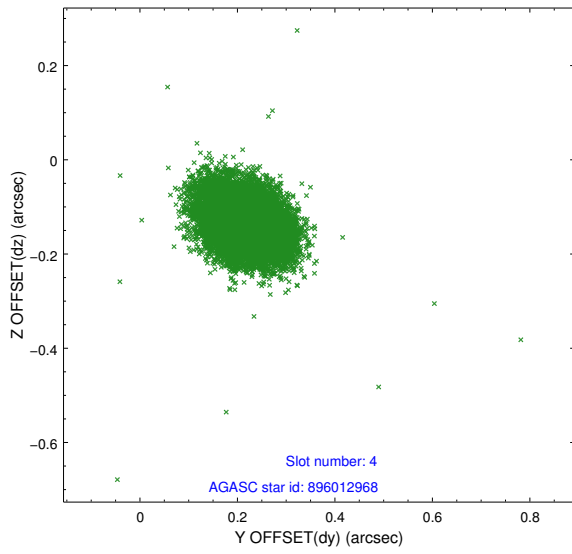
slot	status	id	mag	n_pts	med_dy	med_dz	dr1	dr2	ra	dec	mean_y	mean_z
0	FID	ACIS-S-1	7.19	6380	0.040	-0.057	0.024	0.039	0.000000	0.000000	929.17	-1731.98
1	FID	ACIS-S-4	7.20	6380	0.163	0.026	0.018	0.037	0.000000	0.000000	2146.75	172.15
2	FID	ACIS-S-5	7.22	6381	-0.230	0.044	0.010	0.017	0.000000	0.000000	-1819.84	165.87
3	GUIDE	896009152	7.31	12760	0.031	0.188	0.064	0.101	267.588100	-27.061669	432.55	-1252.44
4	GUIDE	896012968	8.68	12756	0.215	-0.134	0.066	0.108	266.634547	-27.600471	-1421.64	1849.03
5	GUIDE	896014528	7.67	12754	-0.053	-0.247	0.058	0.091	266.628858	-27.438607	-839.05	1853.45
6	GUIDE	897717296	8.25	12759	-0.260	0.504	0.055	0.089	267.921819	-26.875322	1067.97	-2344.27
7	GUIDE	896014680	8.77	12747	0.066	-0.315	0.087	0.140	266.460330	-27.216583	-27.18	2373.42

## 2.4 Star Slots

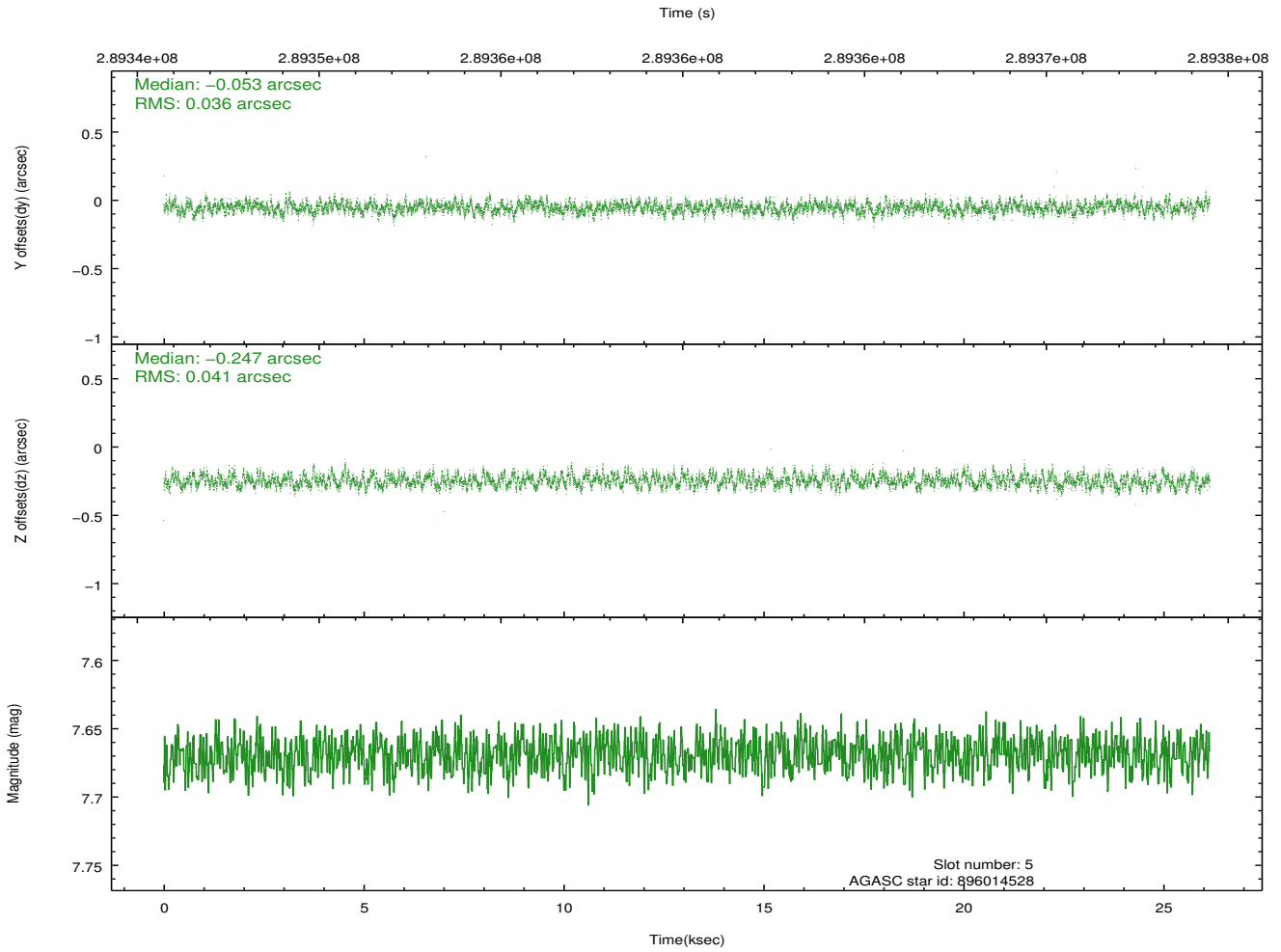
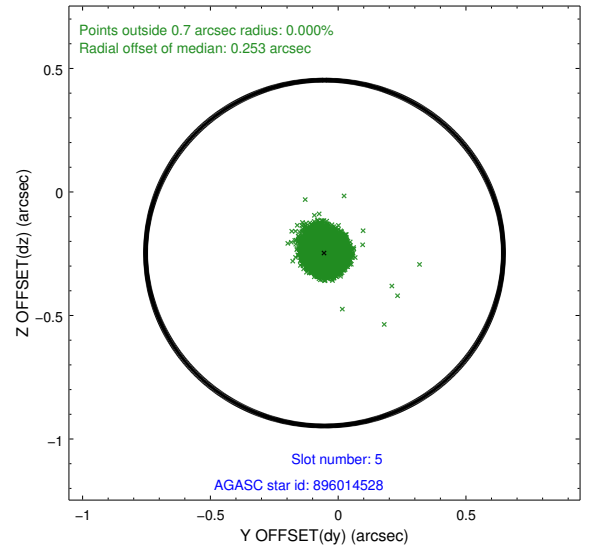
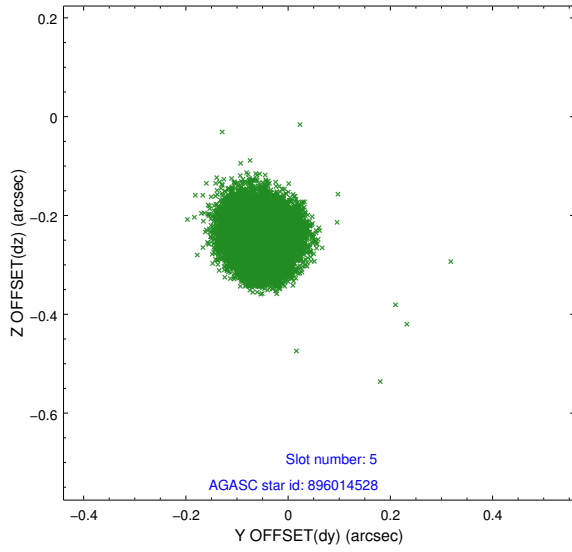
### 2.4.1 Slot 3



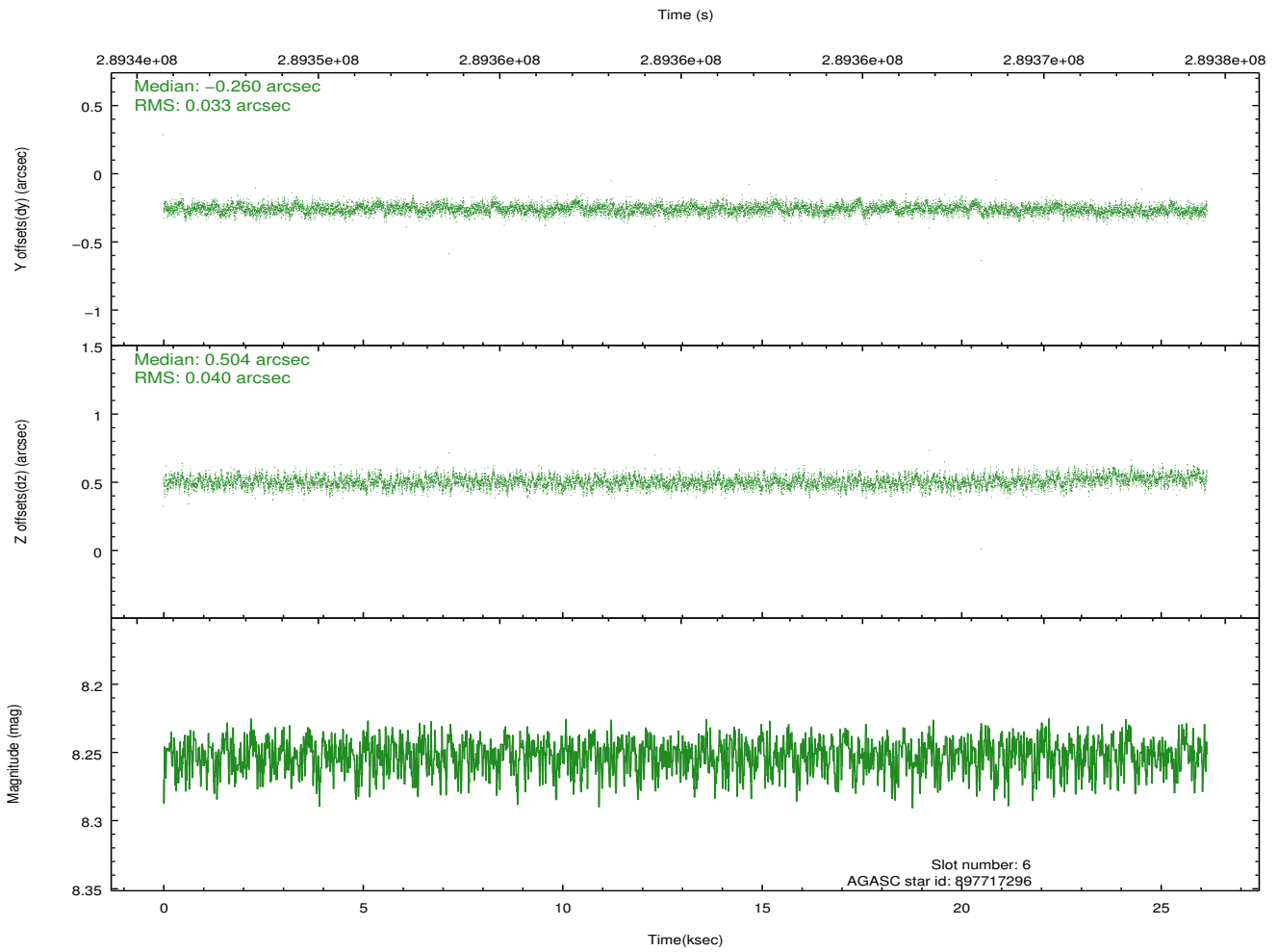
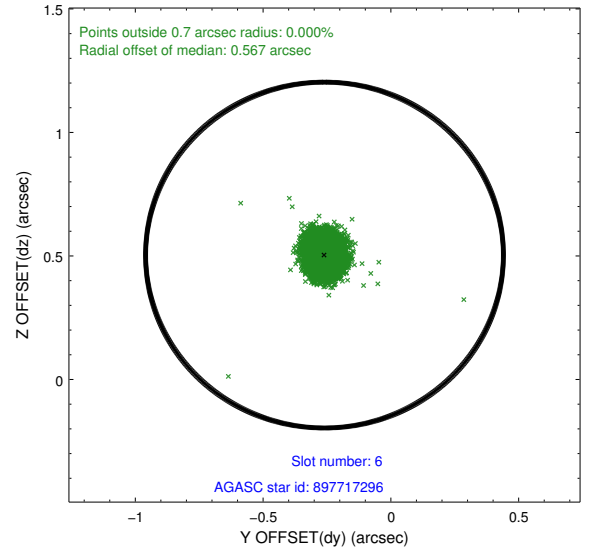
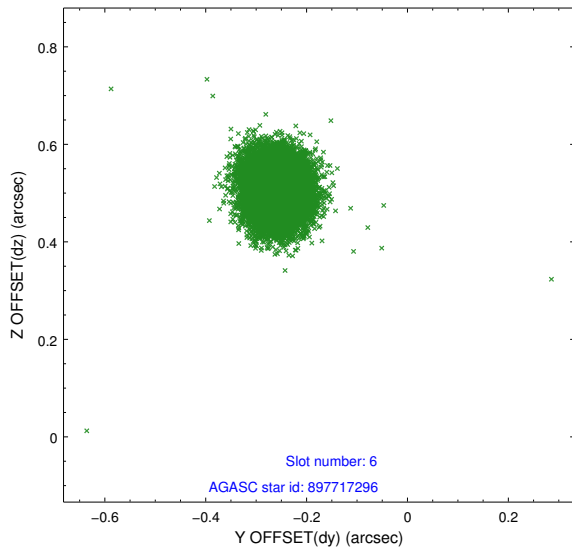
## 2.4.2 Slot 4



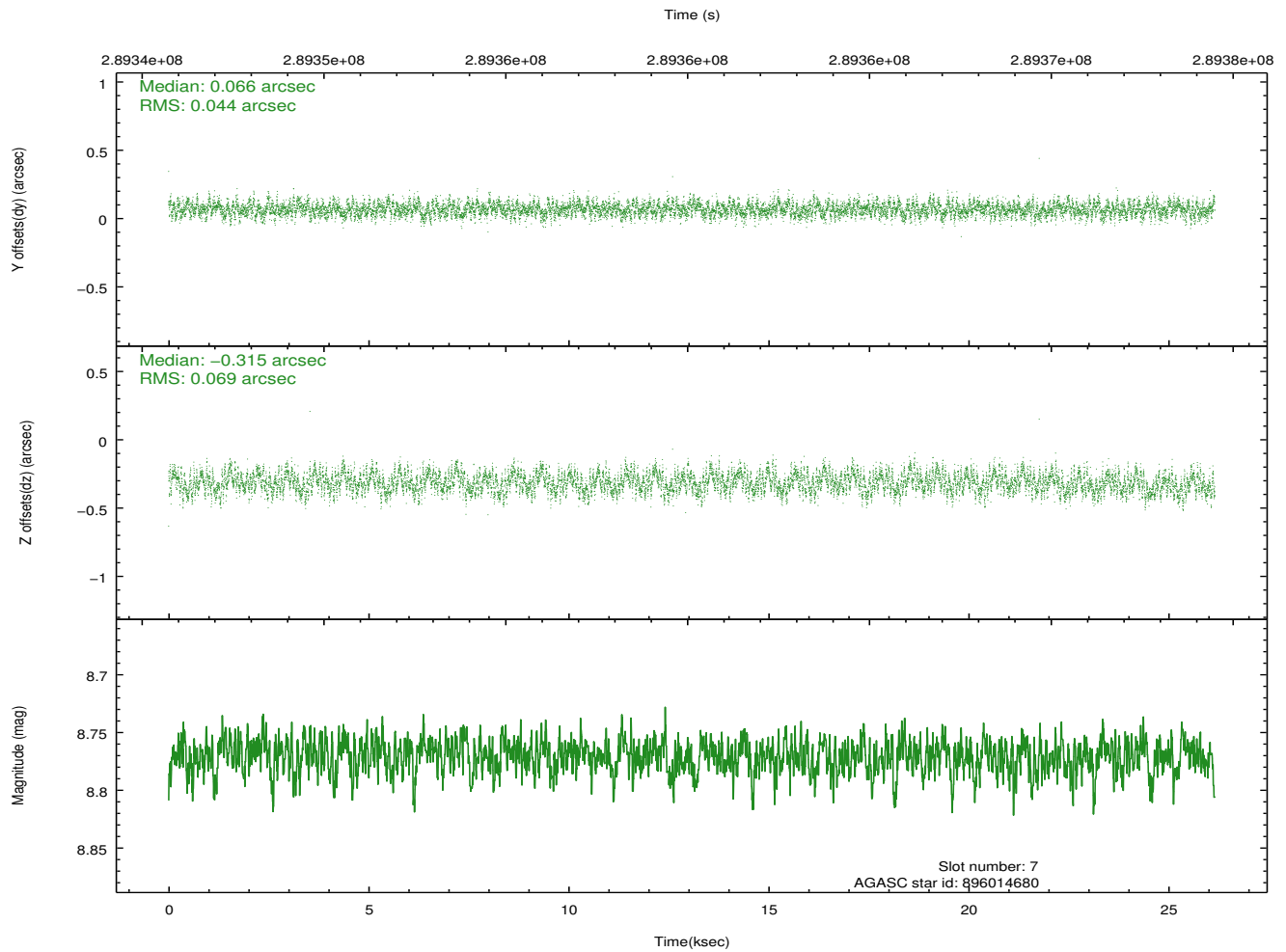
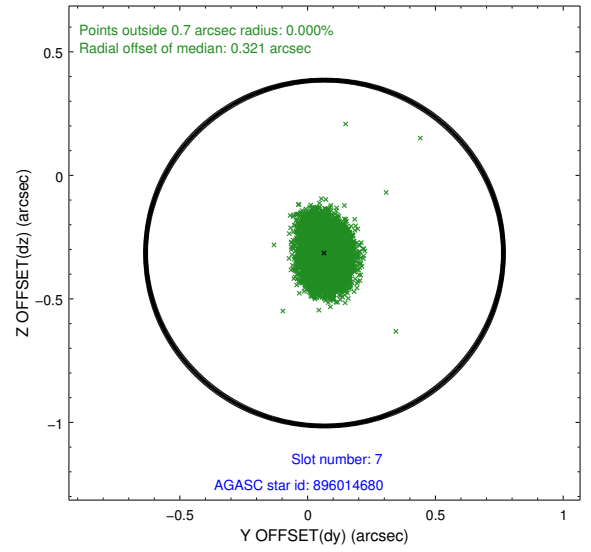
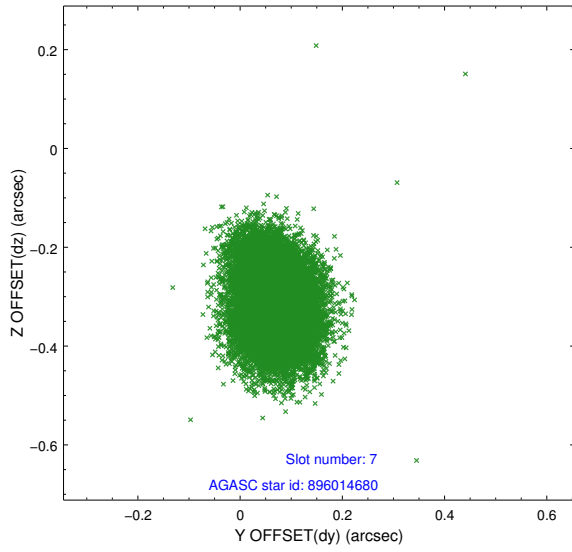
### 2.4.3 Slot 5



### 2.4.4 Slot 6

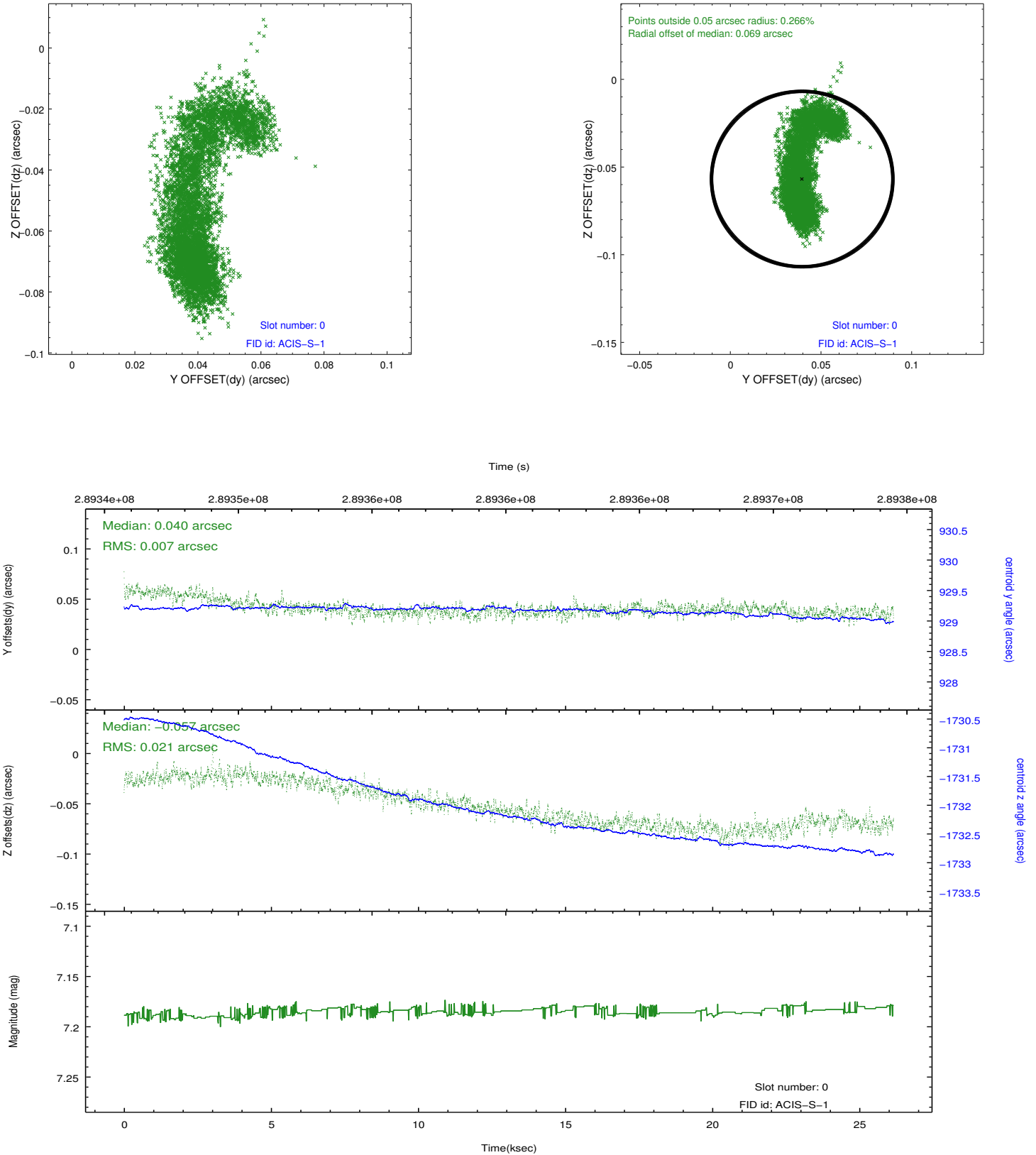


## 2.4.5 Slot 7

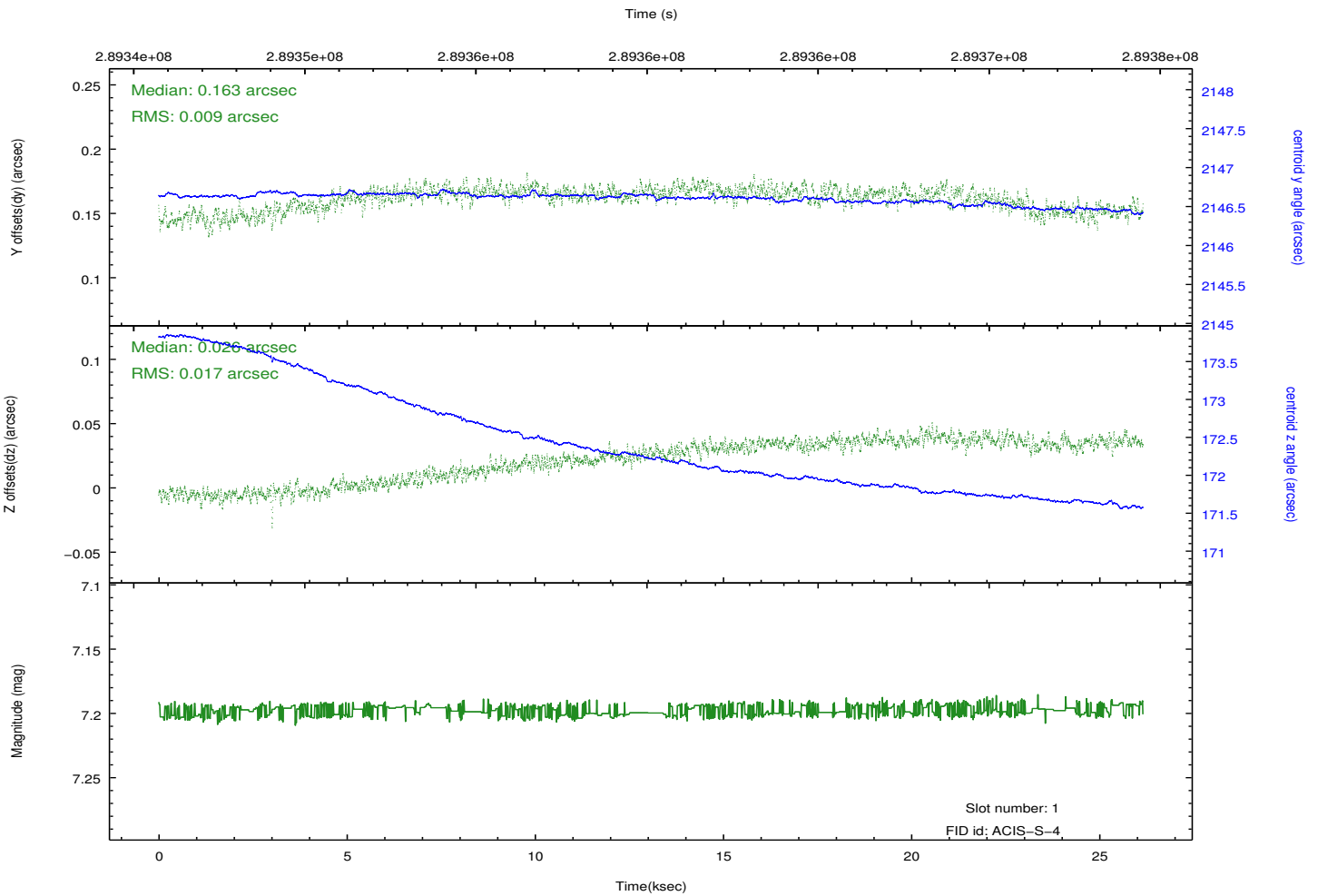
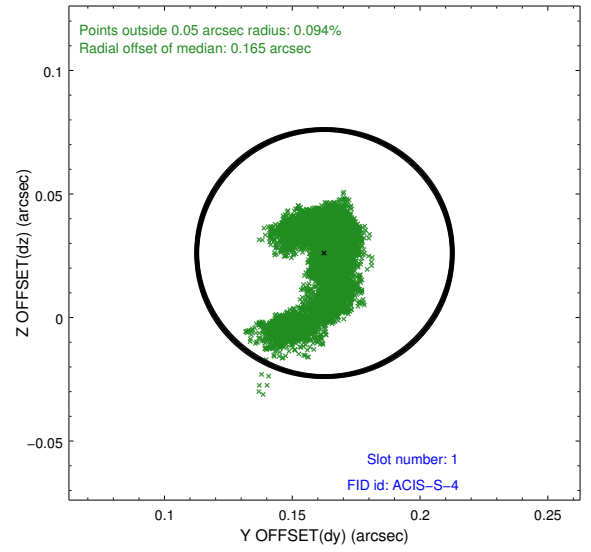
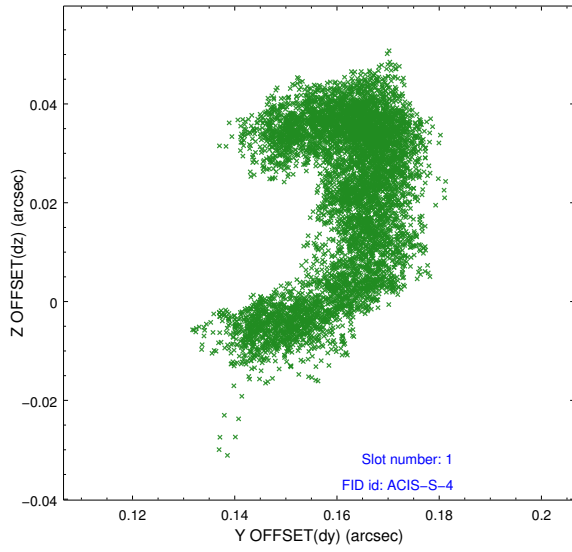


## 2.5 FID Slots

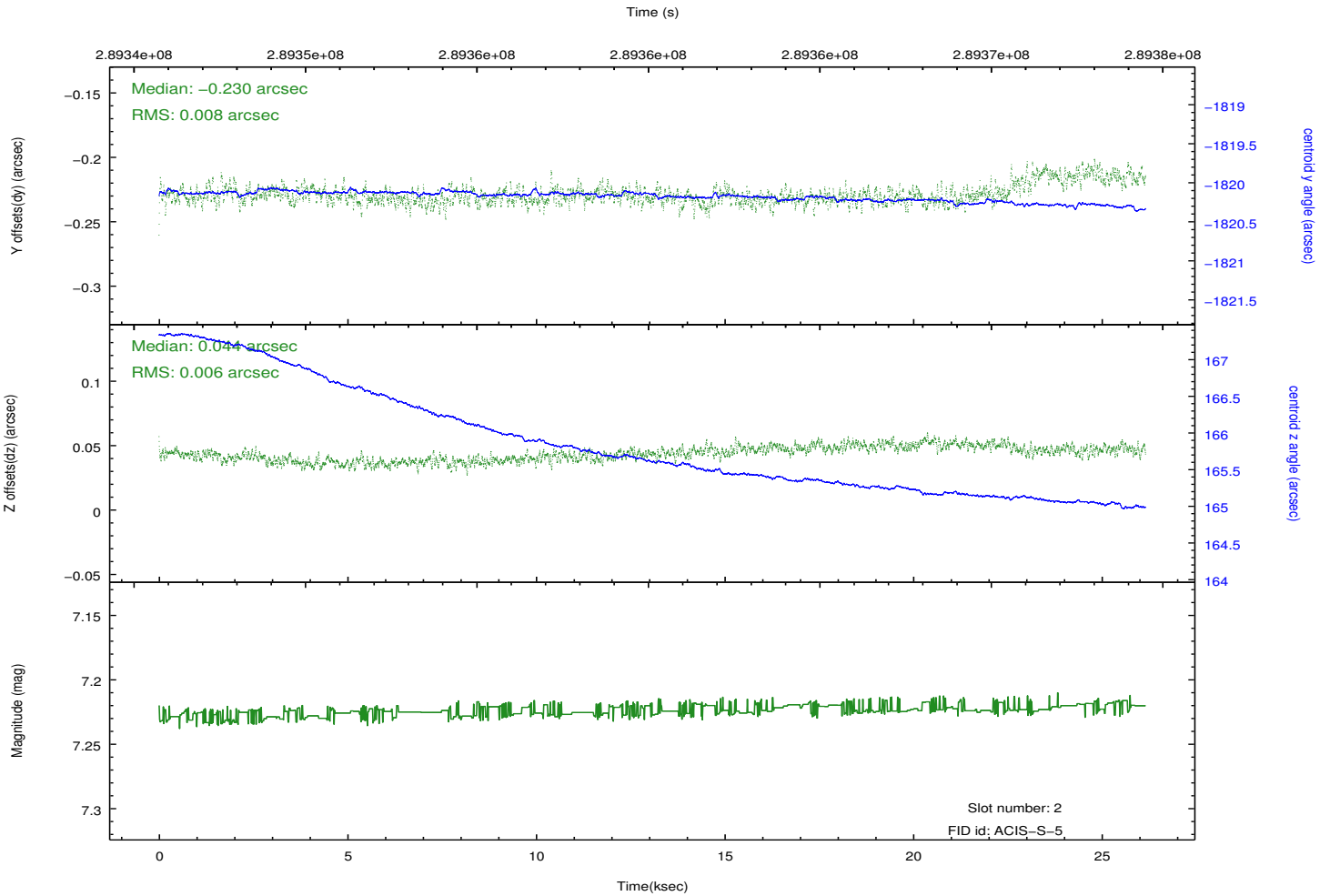
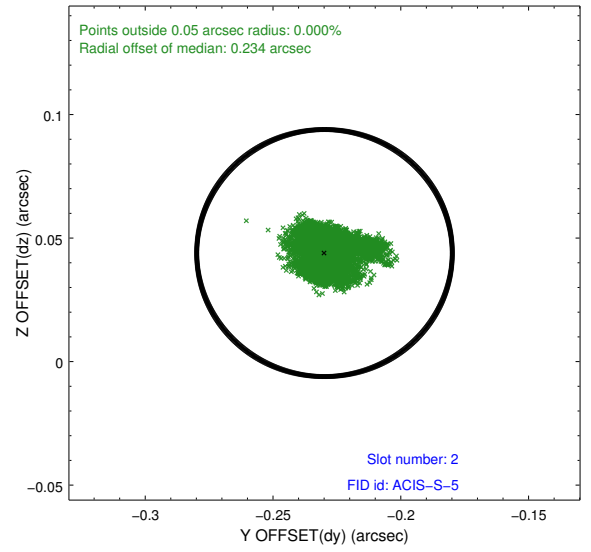
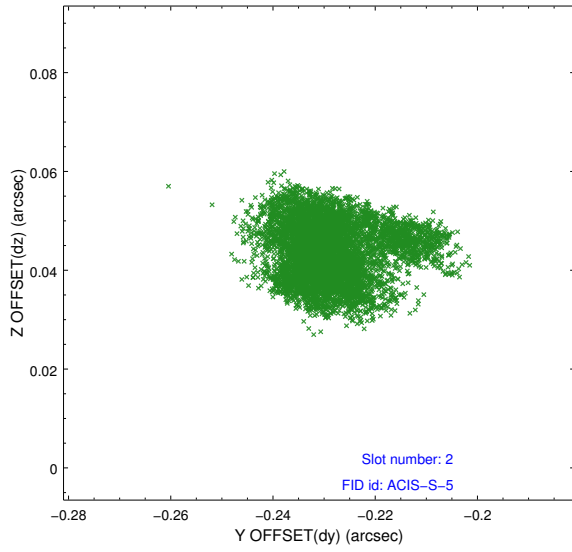
### 2.5.1 Slot 0



## 2.5.2 Slot 1



### 2.5.3 Slot 2



# A Summary

## A.1 Status

V&V Scientist	Beth Sundheim
V&V Date (YYYY-MM-DD)	2012.04.22
V&V Edition	1
V&V Disposition and Status	OK
V&V Charge Time	26.0575999

## A.2 Comments