

V&V Reference Report

L2 ASCDS Version : 8.4.4

Observation 9121 - L2 Version 2
Chandra X-Ray Center

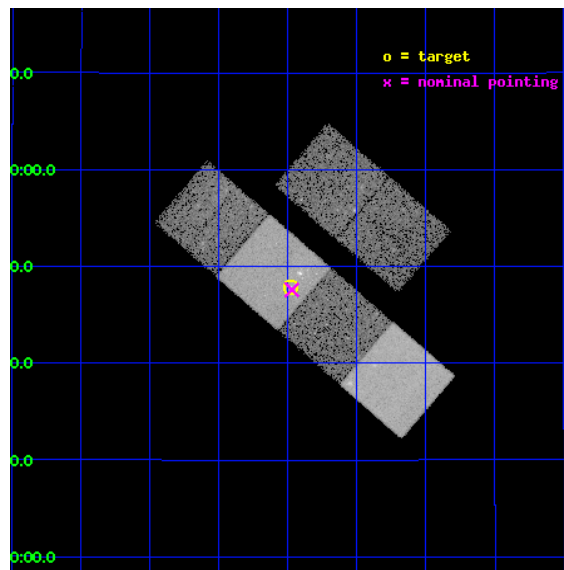
L2 Processing Date : May 13 2012

Contents

1	Front	2
2	OBI	3
2.1	OBI	3
2.1.1	Images	3
2.1.2	Bias	3
2.1.3	Parameters	4
2.1.4	Events	4
2.2	Compared Parameters	5
2.3	Aspect	6
2.4	Star Slots	9
2.4.1	Slot 3	9
2.4.2	Slot 4	10
2.4.3	Slot 5	11
2.4.4	Slot 6	12
2.4.5	Slot 7	13
2.5	FID Slots	14
2.5.1	Slot 0	14
2.5.2	Slot 1	15
2.5.3	Slot 2	16
A	Summary	17
A.1	Status	17
A.2	Comments	17

1 Front

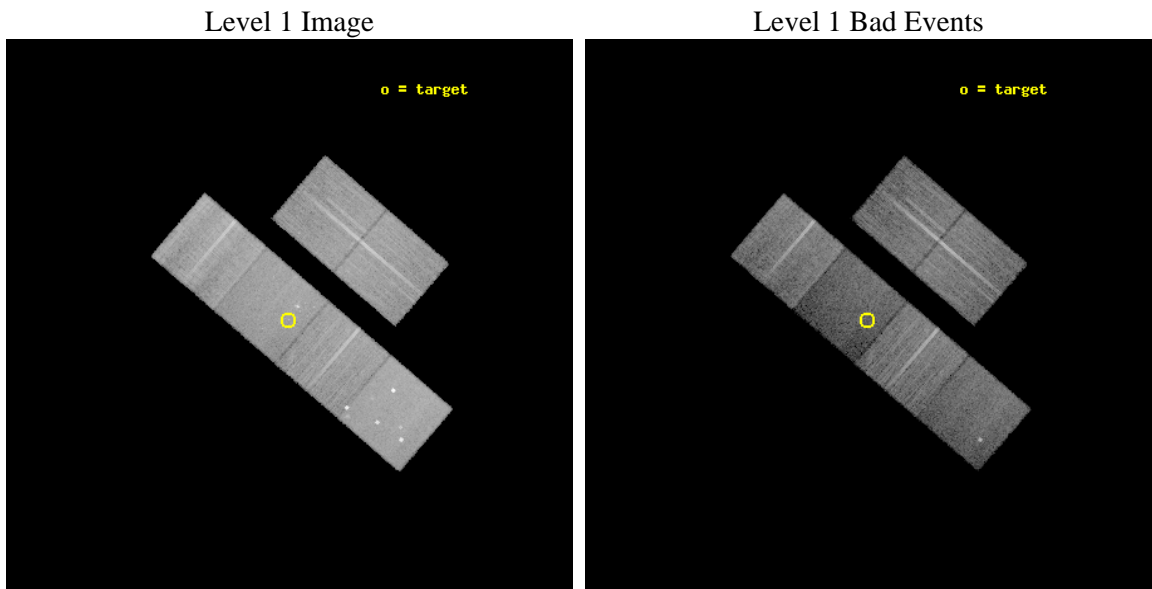
seq_num	500983	Sequence number
obs_id	9121	Observation id
title	The Peculiar X-Ray Evolution of Supernovae 1978K, 1979C and 1993J	
observer	Dr Stefan Immler	Principal investigator
object	SN 1979C	Source name
dtcycle	0	
cycle	P	events from which exps? Prim/Second/Both
ra_targ	185.744167	Observer's specified target RA [deg]
dec_targ	15.797694	Observer's specified target Dec [deg]
ra_nom	185.74262633793	Nominal RA [deg]
dec_nom	15.793065796229	Nominal Dec [deg]
roll_nom	220.72575329532	Nominal Roll [deg]
revision	2	Processing version of data
ontime	15107.199943781	Sum of GTIs [s]
livetime	14915.903481629	Livetime [s]
ontime2	15107.199943781	Sum of GTIs [s]
ontime3	15107.199943781	Sum of GTIs [s]
ontime5	15107.199943781	Sum of GTIs [s]
ontime6	15094.236022294	Sum of GTIs [s]
ontime7	15107.199943781	Sum of GTIs [s]
ontime8	15103.959013045	Sum of GTIs [s]
l2events	166071	Number of level 2 events



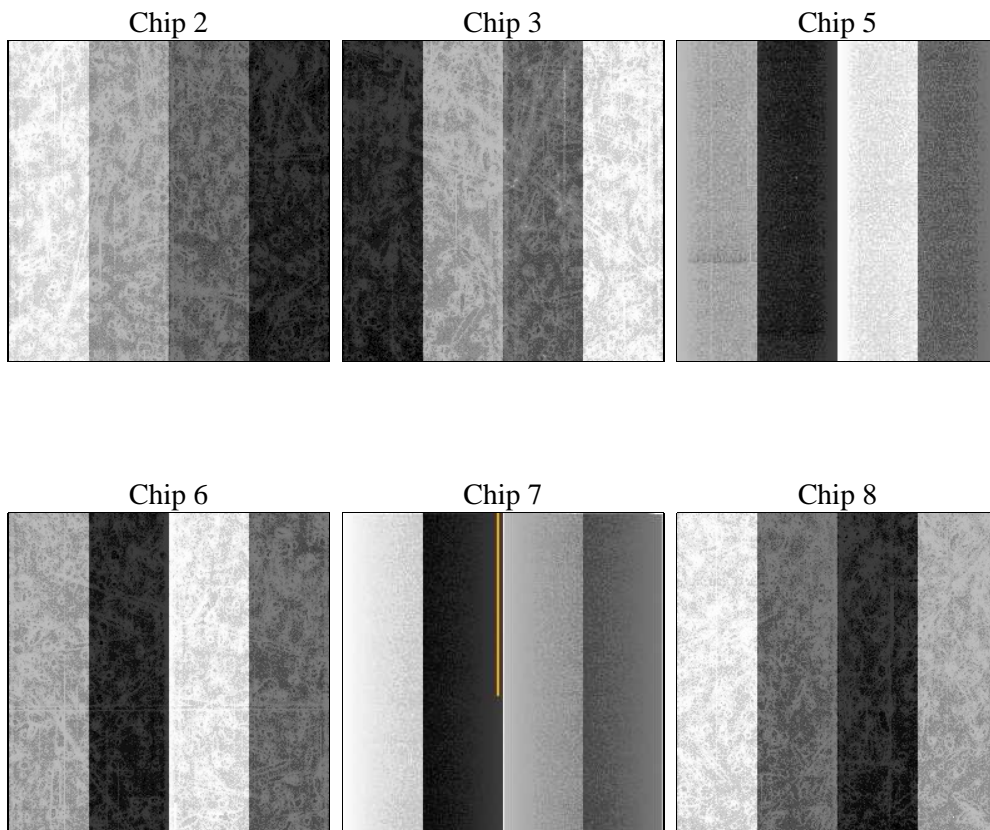
2 OBI

2.1 OBI

2.1.1 Images



2.1.2 Bias



2.1.3 Parameters

obi_num	0	Obi number	sched_exp_time	15000.000000	[s] Scheduled observation exposure time
ascdsver	8.4.4	Processing system revision	ontime	15107.199943781	Sum of GTIs [s]
caldbver	4.4.9	 	ontime2	15107.199943781	Sum of GTIs [s]
date	2012-05-13T01:33:24	Date and time of file creation	ontime3	15107.199943781	Sum of GTIs [s]
revision	2	Processing version of data	ontime5	15107.199943781	Sum of GTIs [s]
			ontime6	15094.236022294	Sum of GTIs [s]
			ontime7	15107.199943781	Sum of GTIs [s]
			ontime8	15103.959013045	Sum of GTIs [s]
			l1events	742114	Number of level 1 events

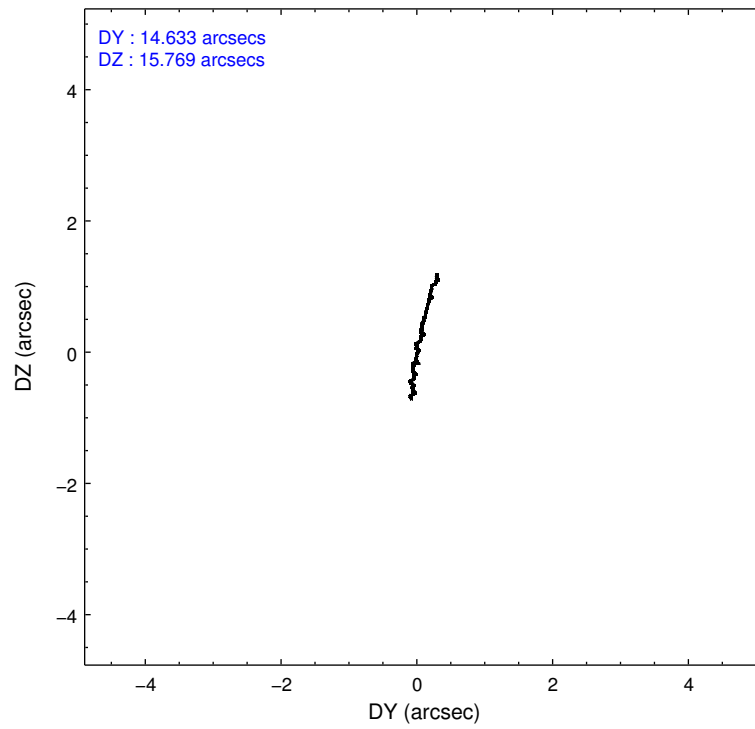
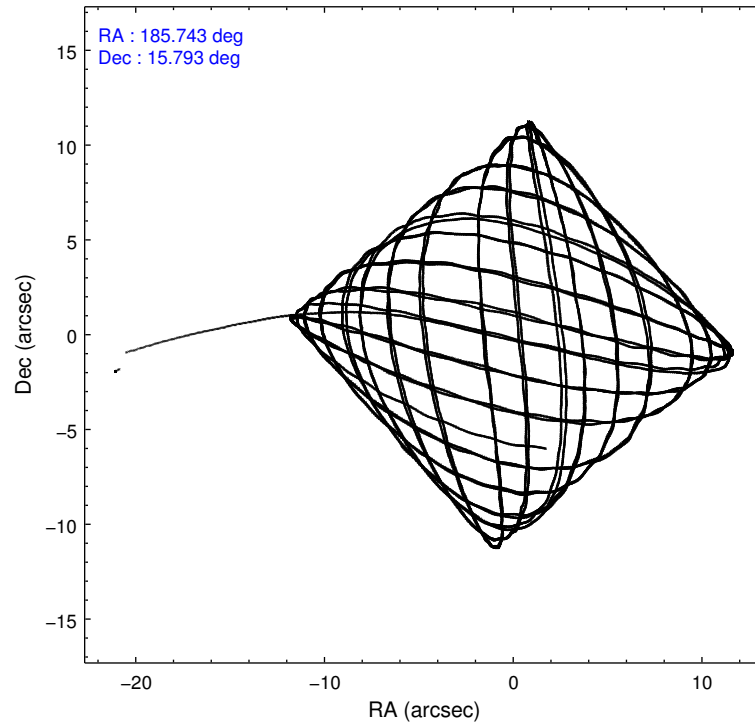
2.1.4 Events

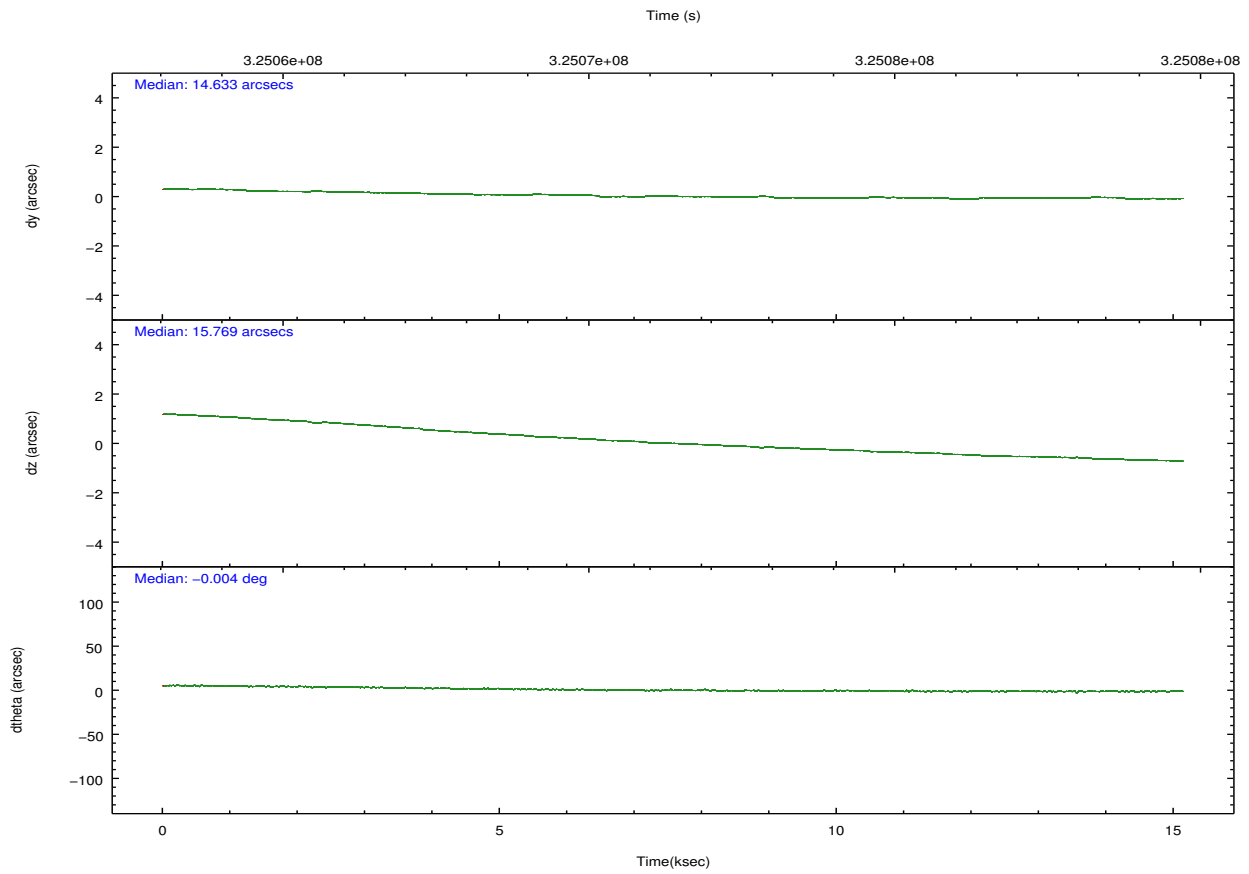
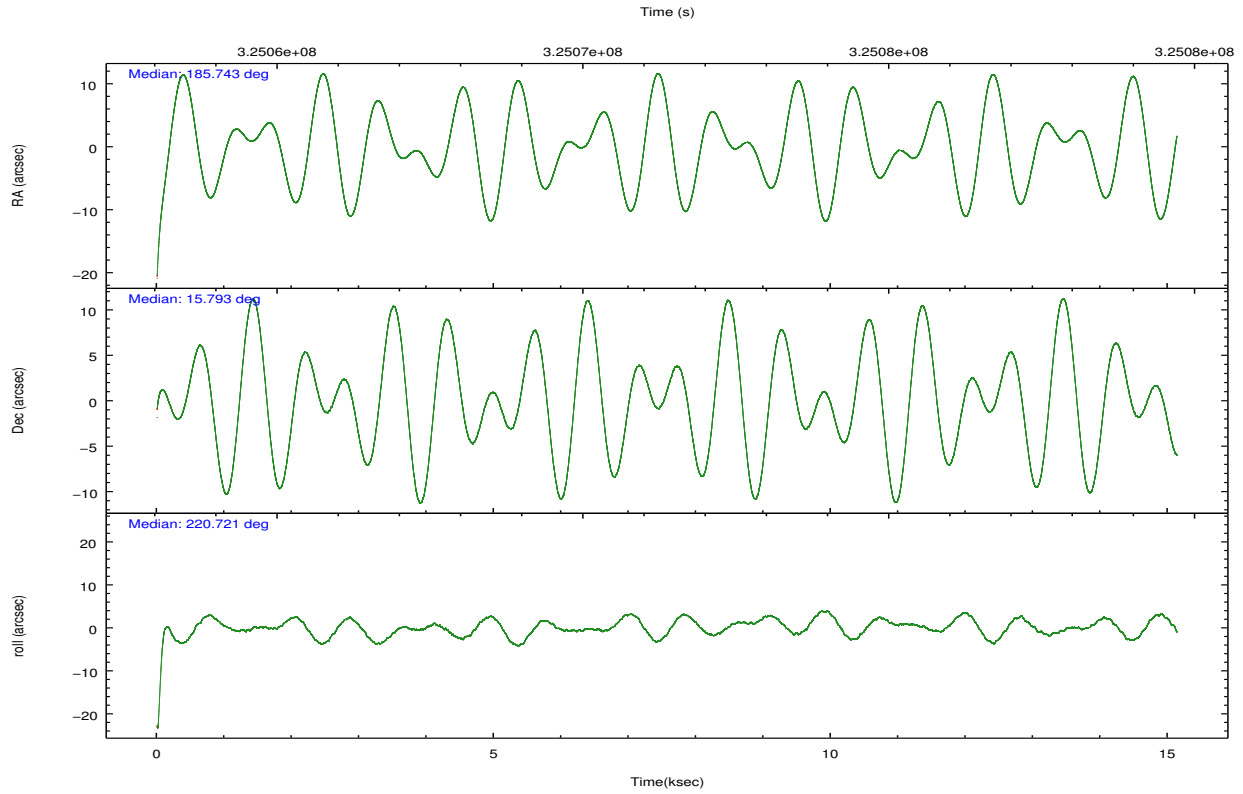
	ccd 2	ccd 3	ccd 5	ccd 6	ccd 7	ccd 8		ccd 2	ccd 3	ccd 5	ccd 6	ccd 7	ccd 8
level 1 events	117482	108785	152663	112547	110885	139752	grade 0 events	4175	4091	15349	4593	6599	10047
rejected events	106234	98007	67910	100660	54798	104093		3%	3%	10%	4%	5%	7%
rejected %	90%	90%	44%	89%	49%	74%	grade 1 events	72	71	318	59	168	116
								0%	0%	0%	0%	0%	0%
							grade 2 events	2648	2333	24682	2560	11989	8332
								2%	2%	16%	2%	10%	5%
							grade 3 events	1180	1243	3581	1187	5465	3961
								1%	1%	2%	1%	4%	2%
							grade 4 events	1251	1190	3368	1280	5188	3750
								1%	1%	2%	1%	4%	2%
							grade 5 events	3242	3927	12019	3949	11591	5933
								2%	3%	7%	3%	10%	4%
							grade 6 events	1999	1926	37811	2275	26870	9579
								1%	1%	24%	2%	24%	6%
							grade 7 events	102915	94004	55535	96644	43015	98034
								87%	86%	36%	85%	38%	70%

2.2 Compared Parameters

Parameter	Planned	Actual	Parameter	Planned	Actual
Instrument	ACIS	ACIS	Obspar format version number	7	7
Detector	ACIS-235678	ACIS-235678	Obspar file type	PREDICTED	ACTUAL
Grating	NONE	NONE	Obspar update status	NONE	UPDATED
Data mode	VFAINT	VFAINT	CCD I0 on	N	N
Observation mode	POINTING	POINTING	CCD I1 on	N	N
[deg] Pointing RA	185.751653	185.7426263379327	CCD I2 on	O2	Y
[deg] Pointing Dec	15.818999	15.79306579622902	CCD I3 on	O1	Y
[deg] Pointing Roll	220.566681	220.7257532953187	CCD S0 on	N	N
[mm] SIM focus pos	-0.684267	-0.6828225247311905	CCD S1 on	Y	Y
[mm] SIM defocus	0	0.001444936568705701	CCD S2 on	Y	Y
[mm] SIM translation stage pos	-190.132523	-190.1400660498719	CCD S3 on	Y	Y
[mm] SIM translation stage offset	0	0.00754346686406393	CCD S4 on	Y	Y
[s] Observation start time (MET)	325063954.184000	325062770.87824	CCD S5 on	N	N
Observation start date	2008-04-20T07:31:29	2008-04-20T07:12:50	Number of optional ACIS chips dropped	0	0
[s] Observation end time (MET)	325078954.184000	325079847.37907	On-chip summing requested	N	N
Observation end date	2008-04-20T11:41:29	2008-04-20T11:57:27	Subarray requested	NONE	NONE
Read mode	TIMED	TIMED	Alternating exposures requested	N	N
			[s] Primary exposure time	0.000000	3.2

2.3 Aspect



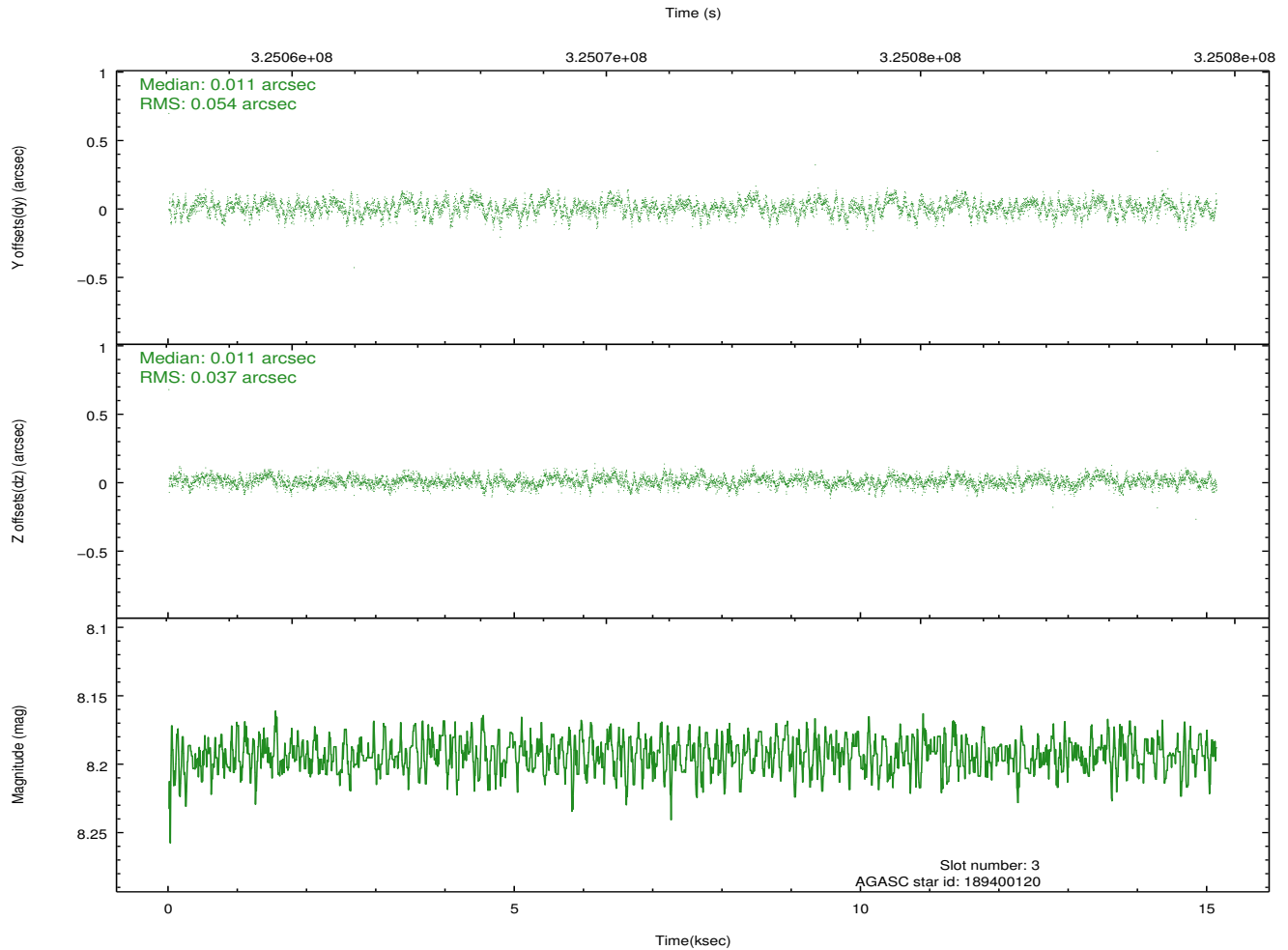
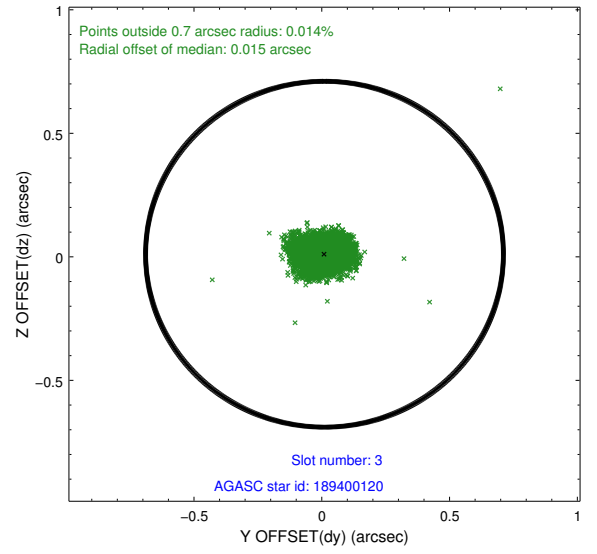


Slot Statistics

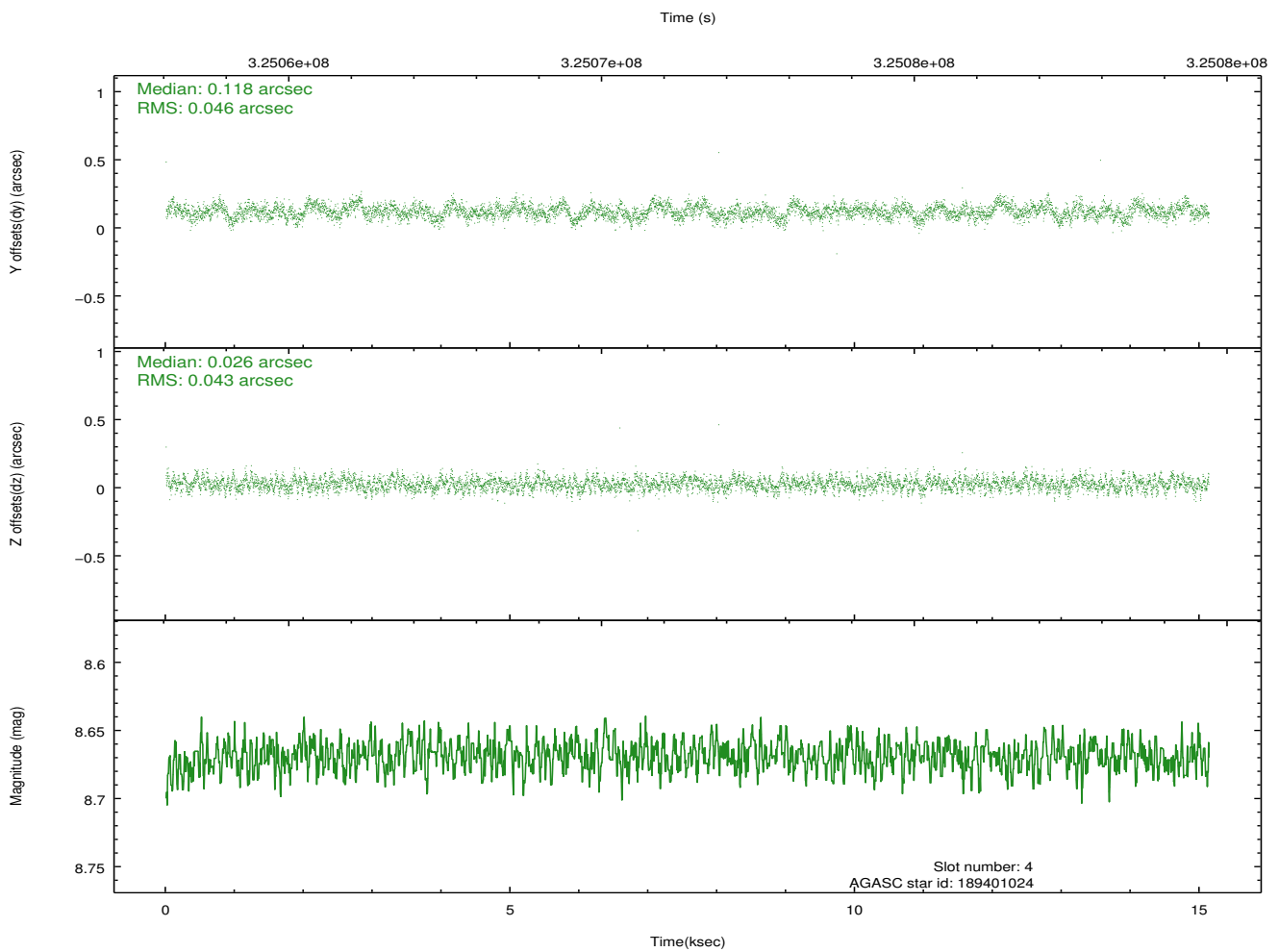
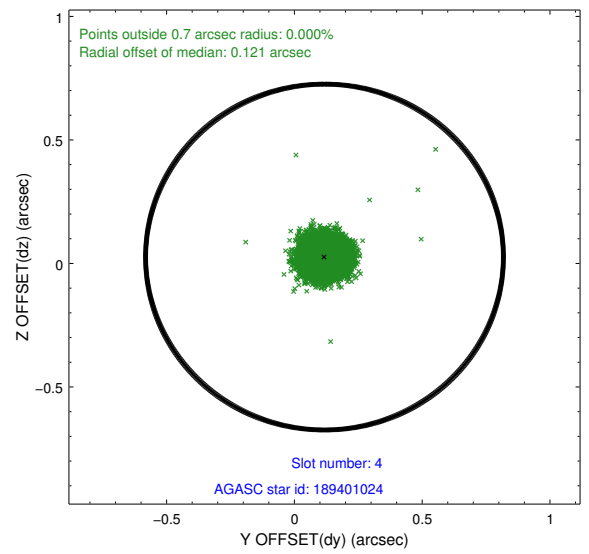
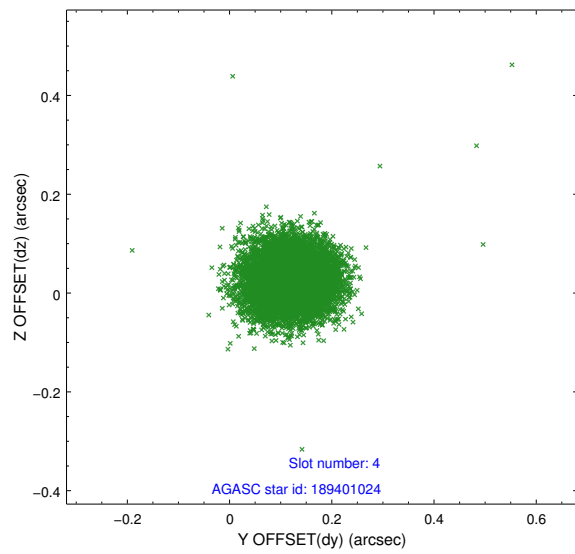
slot	status	id	mag	n_pts	med_dy	med_dz	dr1	dr2	ra	dec	mean_y	mean_z
0	FID	ACIS-S-2	6.87	3692	-0.073	-0.003	0.010	0.021	0.000000	0.000000	-767.71	-1737.28
1	FID	ACIS-S-4	6.96	3692	0.158	0.036	0.008	0.014	0.000000	0.000000	2145.66	170.93
2	FID	ACIS-S-5	6.98	3692	-0.118	-0.025	0.009	0.020	0.000000	0.000000	-1820.22	164.88
3	GUIDE	189400120	8.19	7382	0.011	0.011	0.068	0.111	185.025387	15.714800	2154.37	-1354.69
4	GUIDE	189401024	8.67	7382	0.118	0.026	0.066	0.105	185.977630	15.617765	-123.60	1059.63
5	GUIDE	189409936	8.82	7378	0.156	-0.018	0.062	0.098	186.093063	16.342557	-2121.75	-665.32
6	GUIDE	189410648	8.12	7383	-0.192	0.118	0.071	0.113	185.747145	16.243433	-981.83	-1170.42
7	GUIDE	189411792	7.90	7379	-0.091	-0.135	0.057	0.088	186.226855	16.194788	-2128.83	39.08

2.4 Star Slots

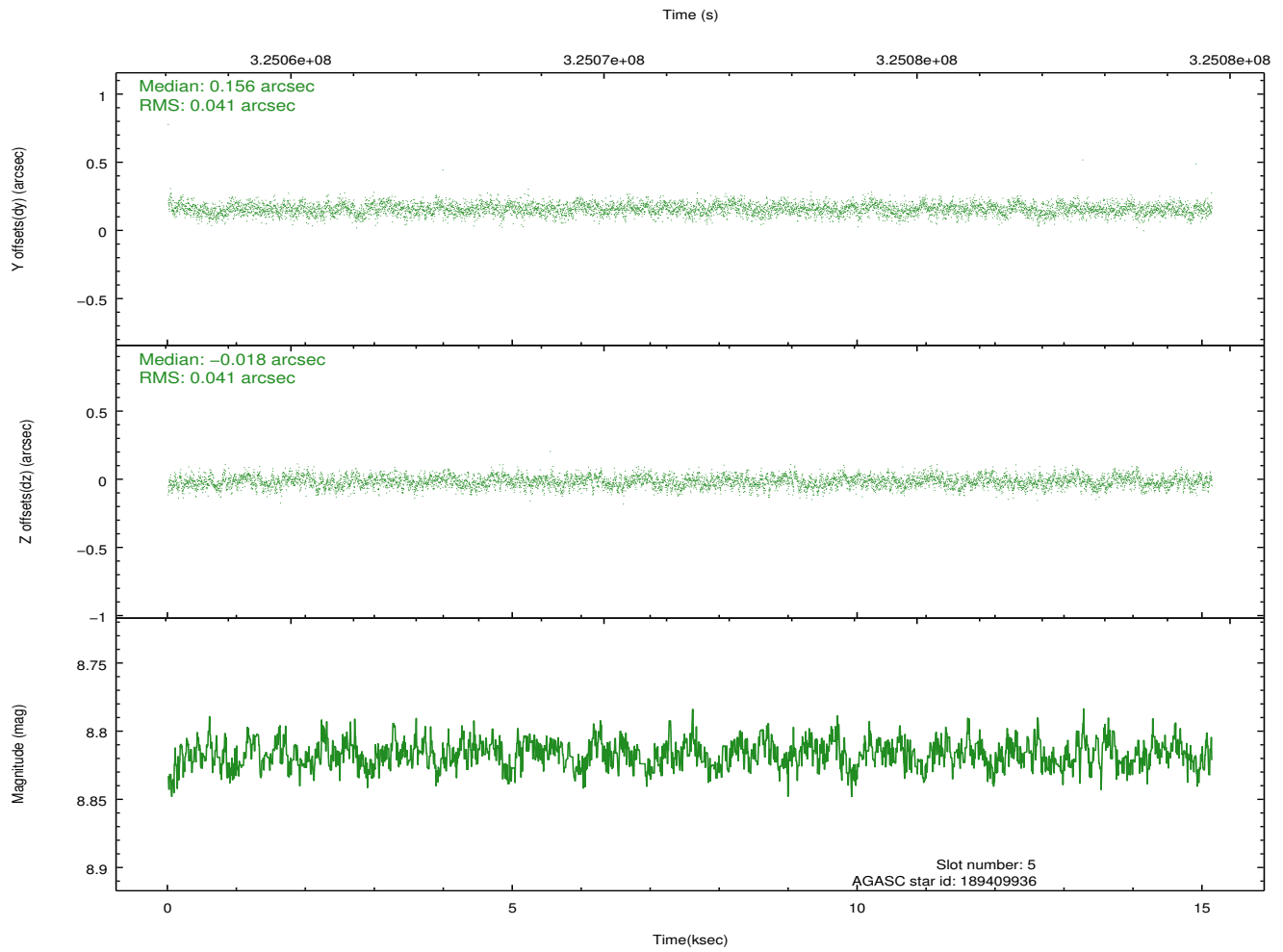
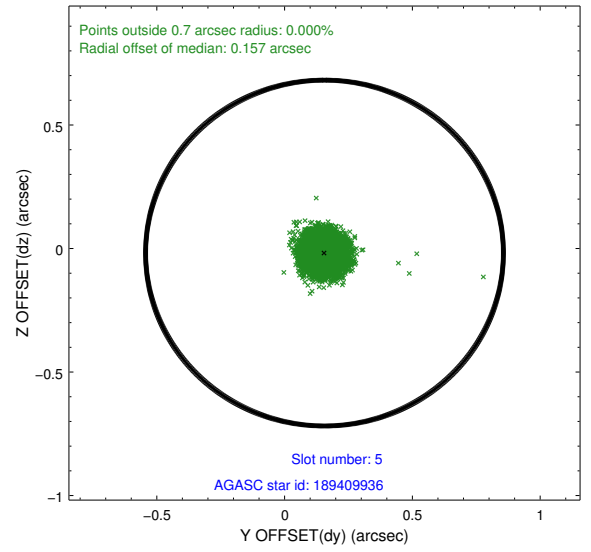
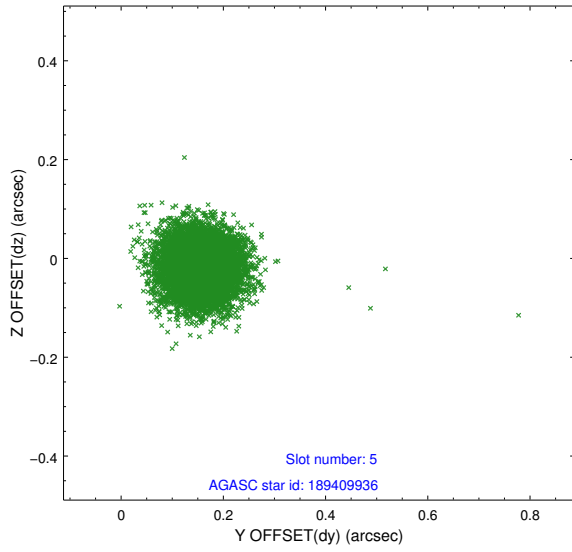
2.4.1 Slot 3



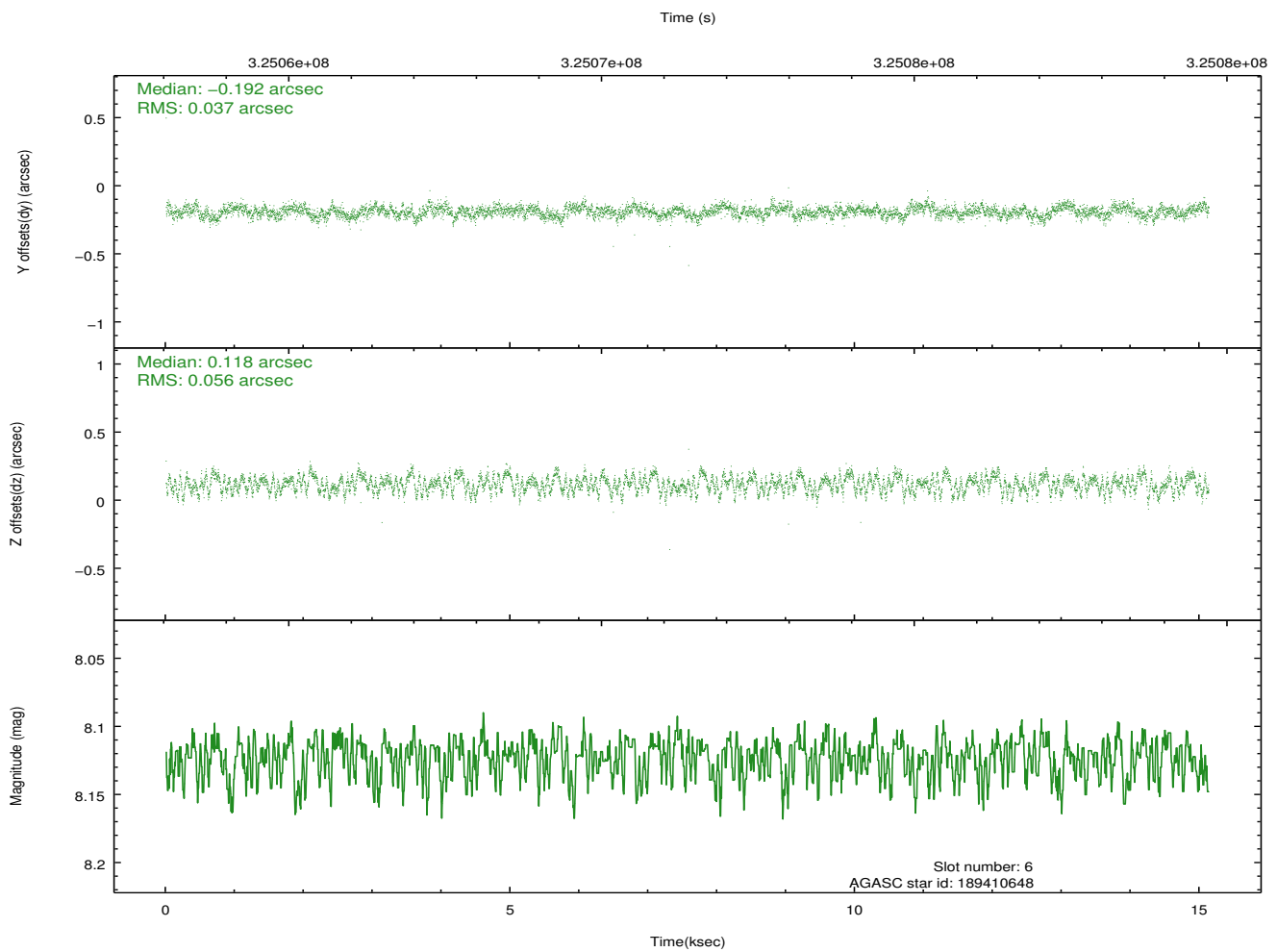
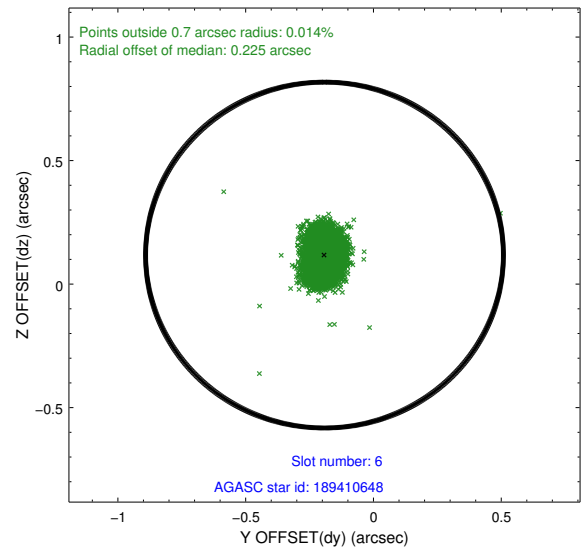
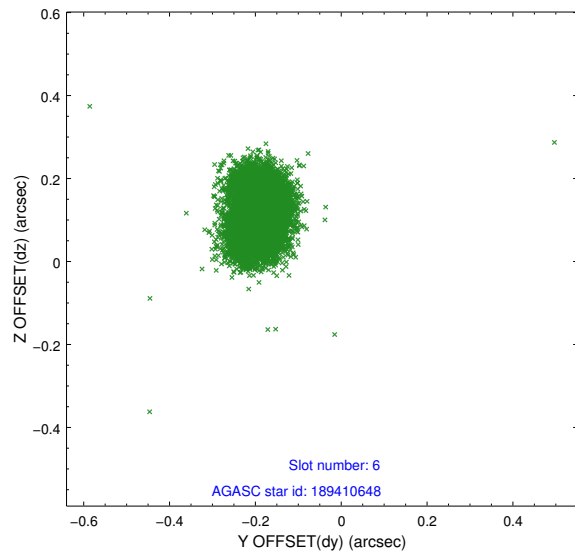
2.4.2 Slot 4



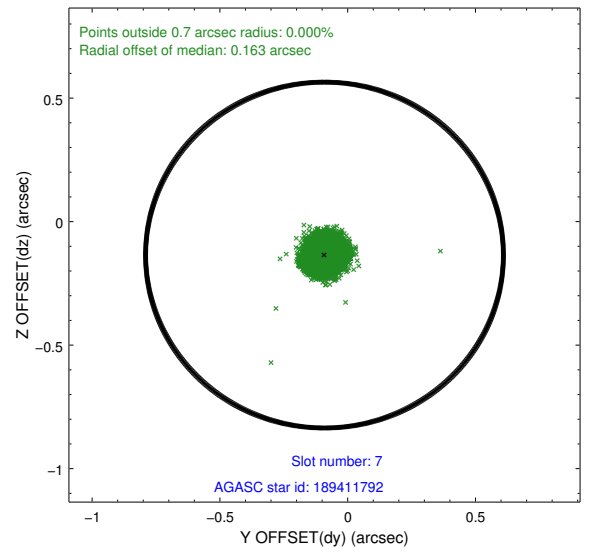
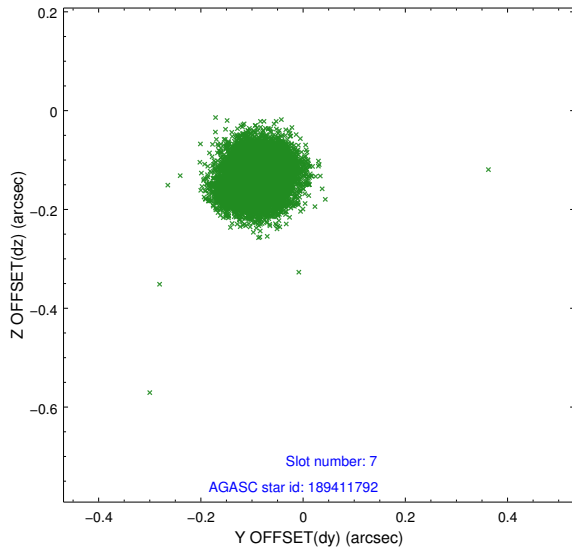
2.4.3 Slot 5



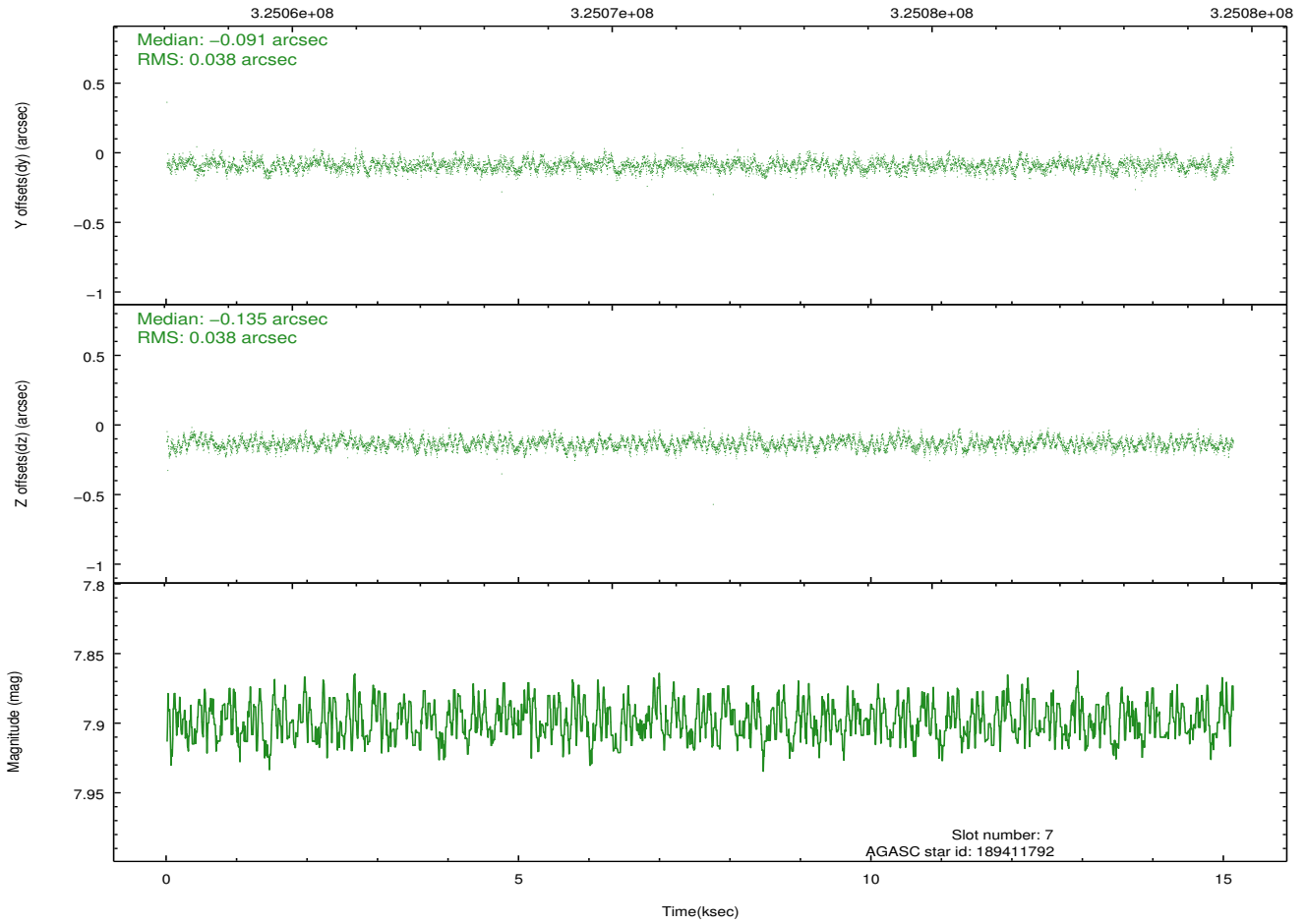
2.4.4 Slot 6



2.4.5 Slot 7

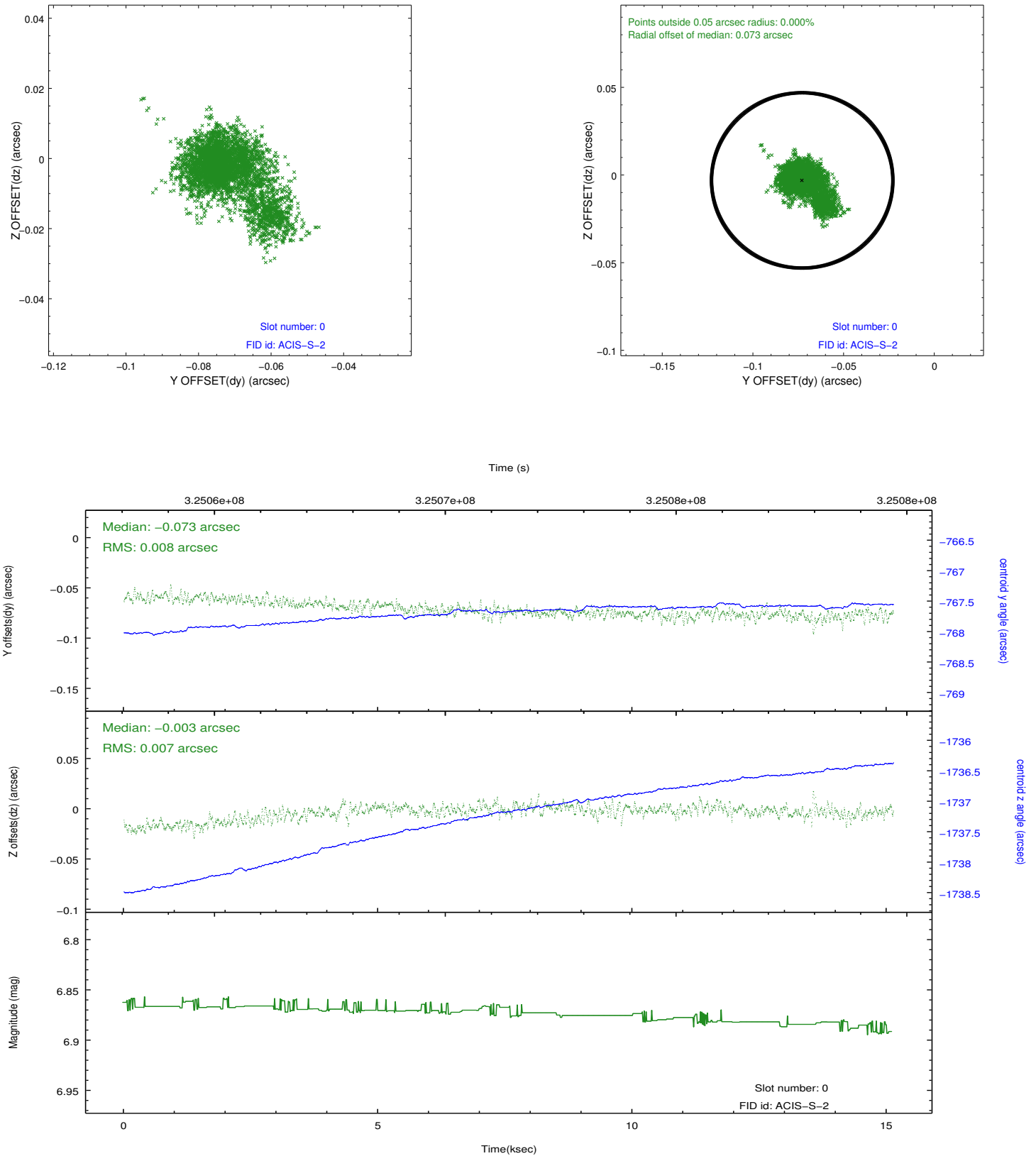


Time (s)

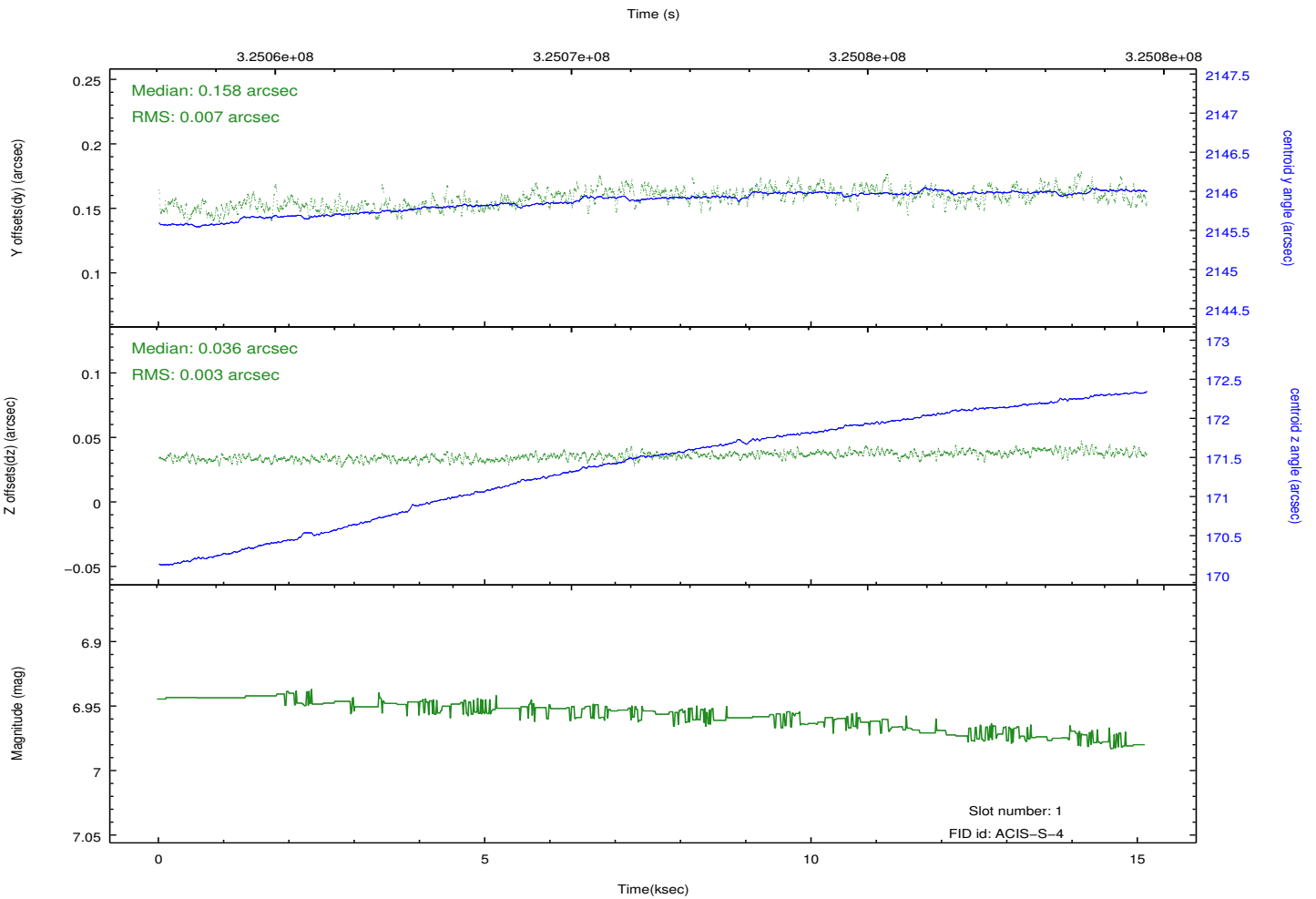
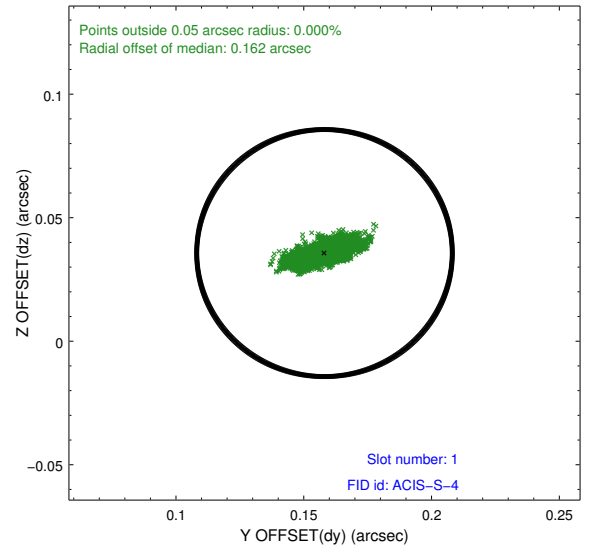
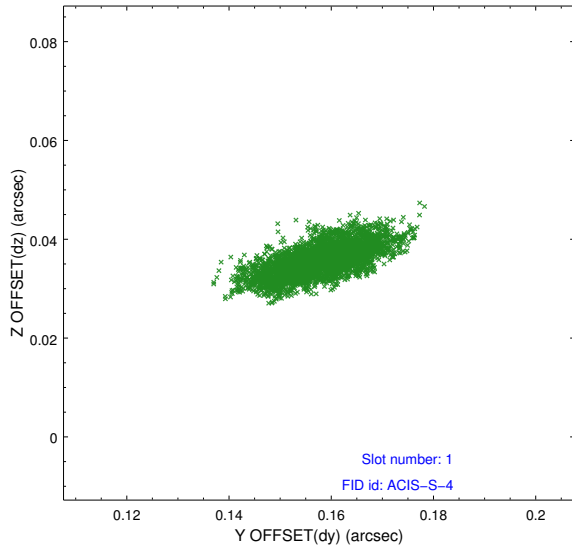


2.5 FID Slots

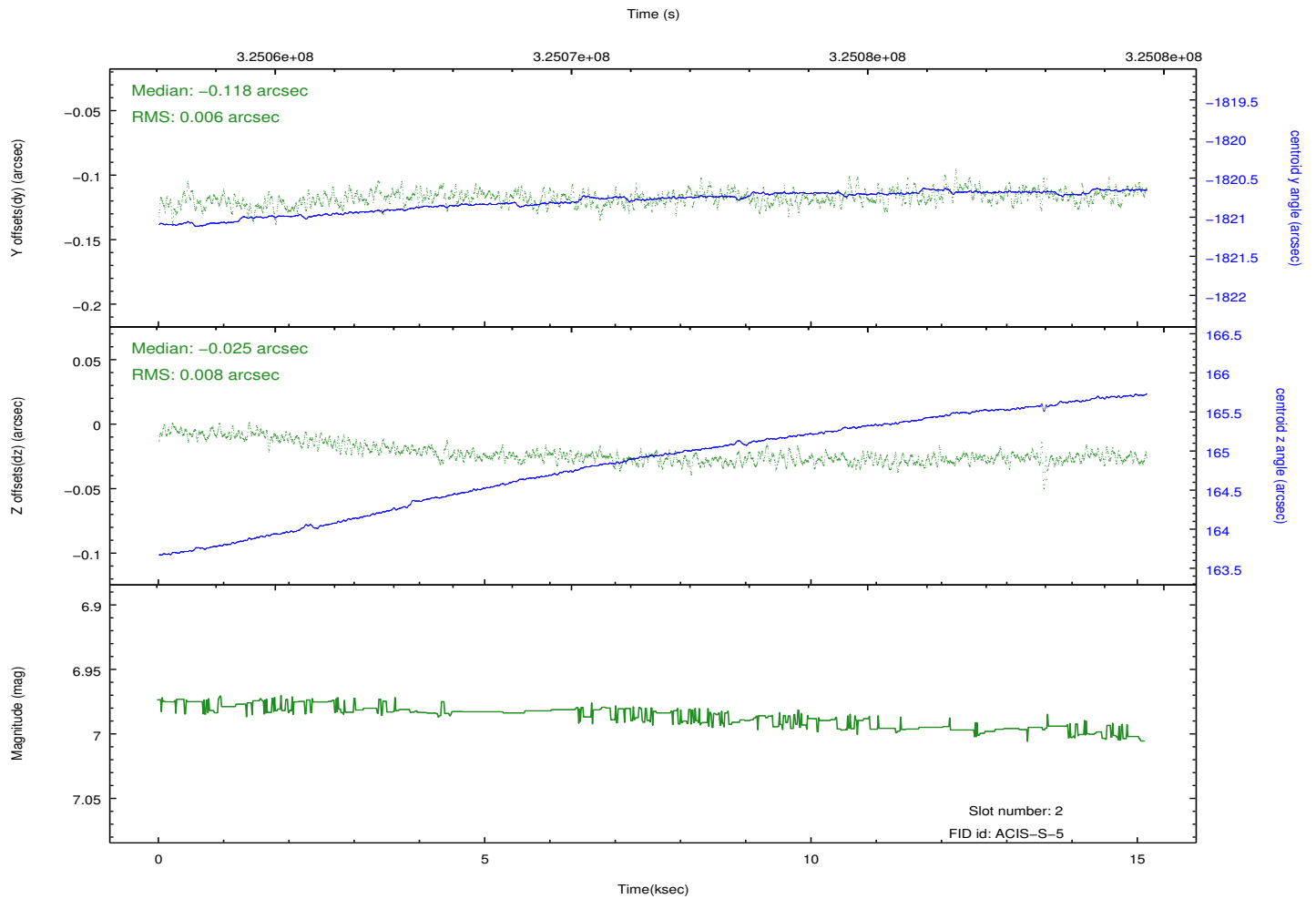
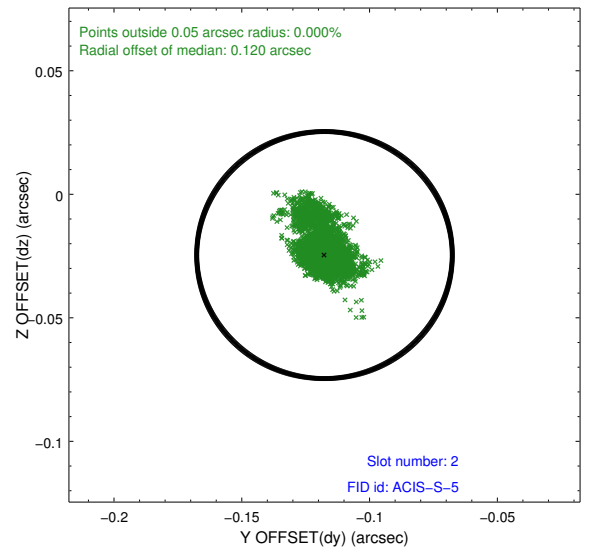
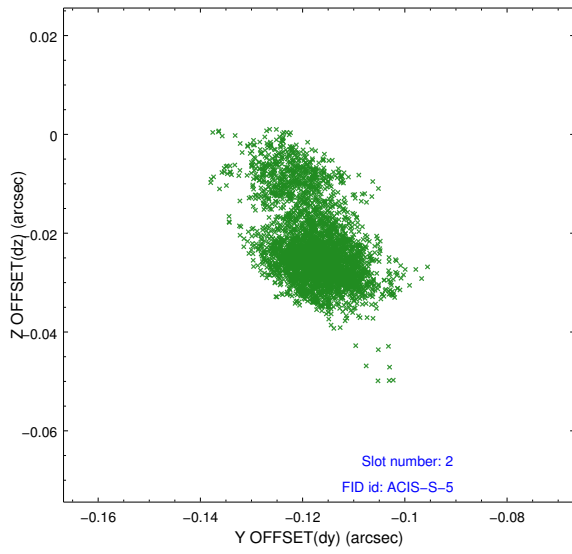
2.5.1 Slot 0



2.5.2 Slot 1



2.5.3 Slot 2



A Summary

A.1 Status

V&V Scientist	Jen Lauer
V&V Date (YYYY-MM-DD)	2012.05.15
V&V Edition	1
V&V Disposition and Status	OK
V&V Charge Time	15.1071999

A.2 Comments