

V&V Reference Report

L2 ASCDS Version : 8.4.4

Observation 9231 - L2 Version 2
Chandra X-Ray Center

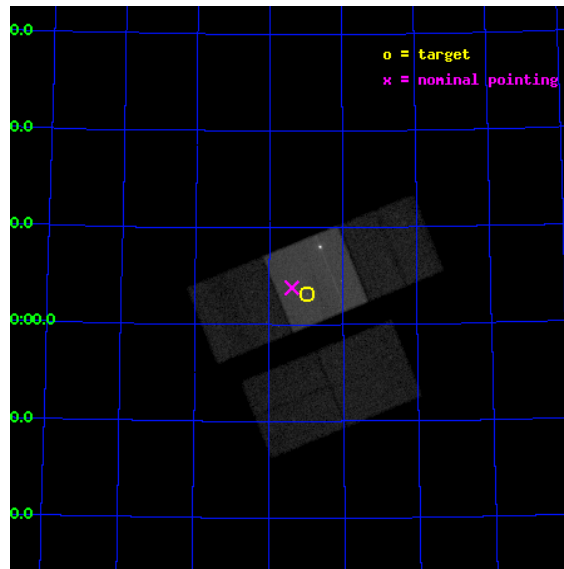
L2 Processing Date : May 7 2012

Contents

1	Front	2
2	OBI	3
2.1	OBI	3
2.1.1	Images	3
2.1.2	Bias	3
2.1.3	Parameters	4
2.1.4	Events	4
2.2	Compared Parameters	5
2.3	Aspect	6
2.4	Star Slots	9
2.4.1	Slot 3	9
2.4.2	Slot 4	10
2.4.3	Slot 5	11
2.4.4	Slot 6	12
2.4.5	Slot 7	13
2.5	FID Slots	14
2.5.1	Slot 0	14
2.5.2	Slot 1	15
2.5.3	Slot 2	16
A	Summary	17
A.1	Status	17
A.2	Comments	17

1 Front

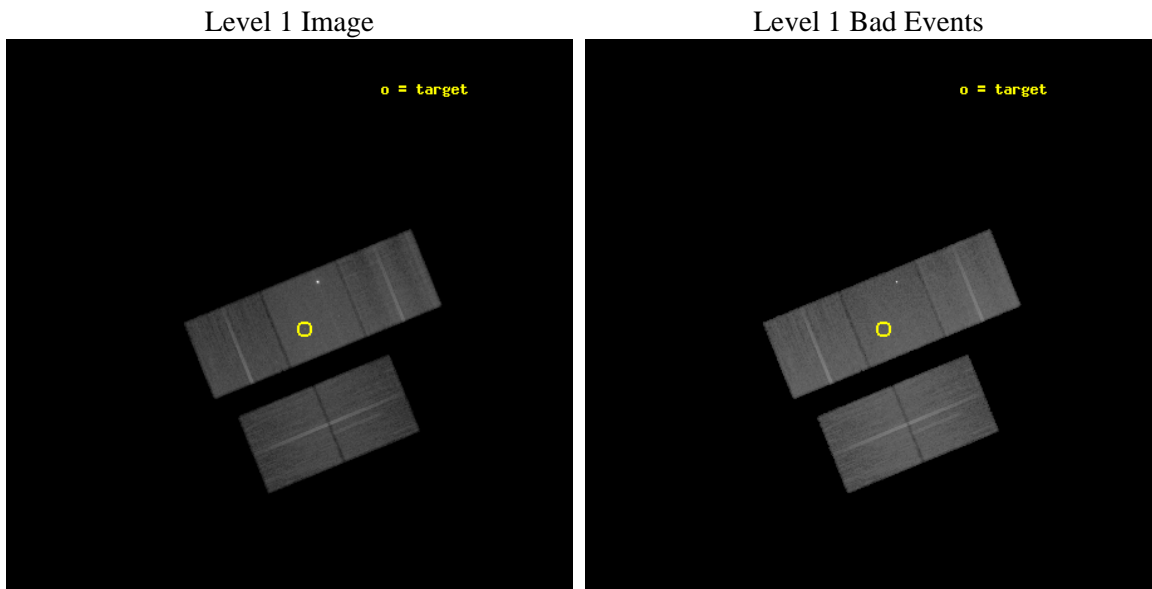
seq_num	701672	Sequence number
obs_id	9231	Observation id
title	Investigating the physics behind the X-ray / radio offset in 4C 74.26	Proposal title
observer	Ms Mary Erlund	Principal investigator
object	4C 74.26 Southern Hotspot	Source name
dtcycle	0	
cycle	P	events from which exps? Prim/Second/Both
ra_targ	310.744583	Observer's specified target RA [deg]
dec_targ	75.053611	Observer's specified target Dec [deg]
ra_nom	310.84744881625	Nominal RA [deg]
dec_nom	75.063534743713	Nominal Dec [deg]
roll_nom	337.84026814799	Nominal Roll [deg]
revision	2	Processing version of data
ontime	24087.000185251	Sum of GTIs [s]
livetime	23772.285795239	Livetime [s]
ontime2	24077.577254415	Sum of GTIs [s]
ontime3	24077.577264309	Sum of GTIs [s]
ontime6	24087.000185251	Sum of GTIs [s]
ontime7	24087.000185251	Sum of GTIs [s]
ontime8	24080.718274295	Sum of GTIs [s]
l2events	279741	Number of level 2 events



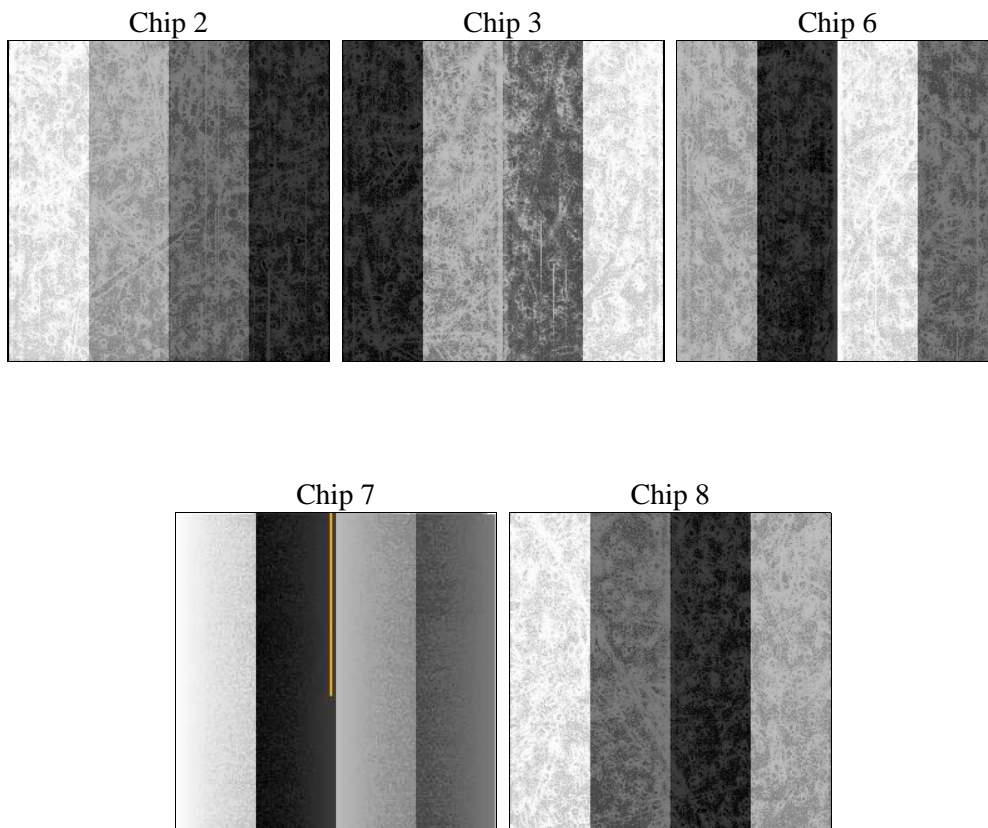
2 OBI

2.1 OBI

2.1.1 Images



2.1.2 Bias



2.1.3 Parameters

obi_num	0	Obi number	sched_exp_time	24000.000000	[s] Scheduled observation exposure time
ascdsver	8.4.4	Processing system revision	ontime	24087.000185251	Sum of GTIs [s]
caldbver	4.4.9	 	ontime2	24077.577254415	Sum of GTIs [s]
date	2012-05-07T16:42:17	Date and time of file creation	ontime3	24077.577264309	Sum of GTIs [s]
revision	2	Processing version of data	ontime6	24087.000185251	Sum of GTIs [s]
			ontime7	24087.000185251	Sum of GTIs [s]
			ontime8	24080.718274295	Sum of GTIs [s]
			l1events	1377760	Number of level 1 events

2.1.4 Events

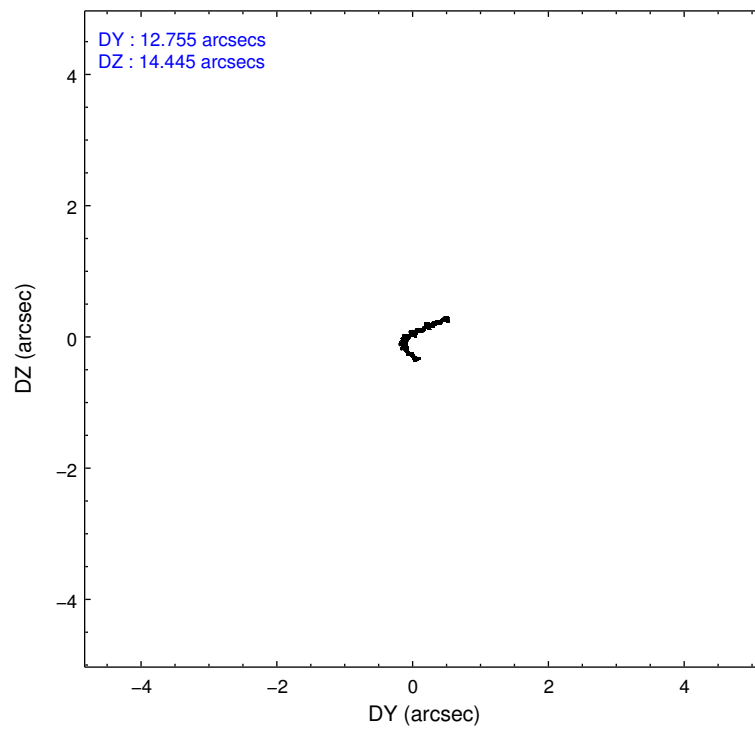
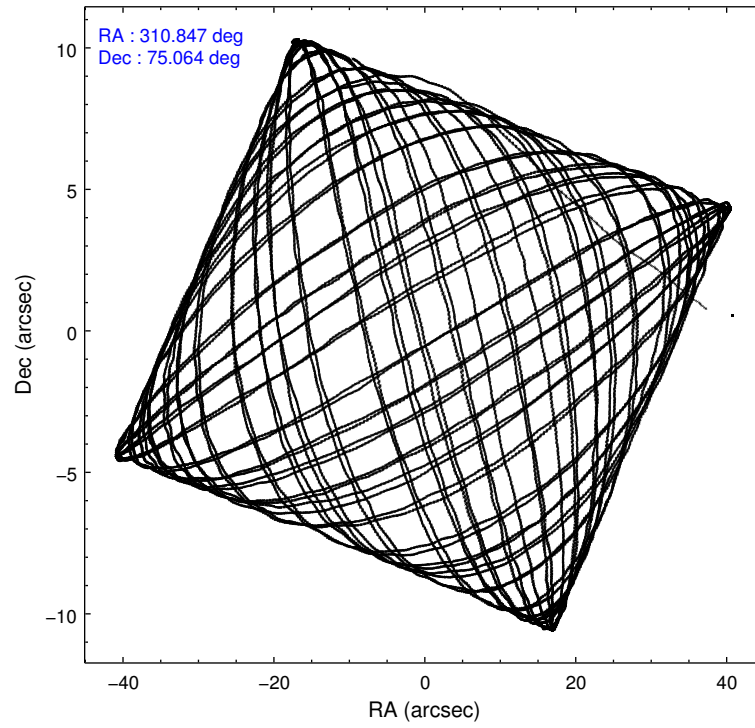
	ccd 2	ccd 3	ccd 6	ccd 7	ccd 8
level 1 events	231607	224524	236329	382400	302900
rejected events	202761	195471	207101	204422	231464
rejected %	87%	87%	87%	53%	76%

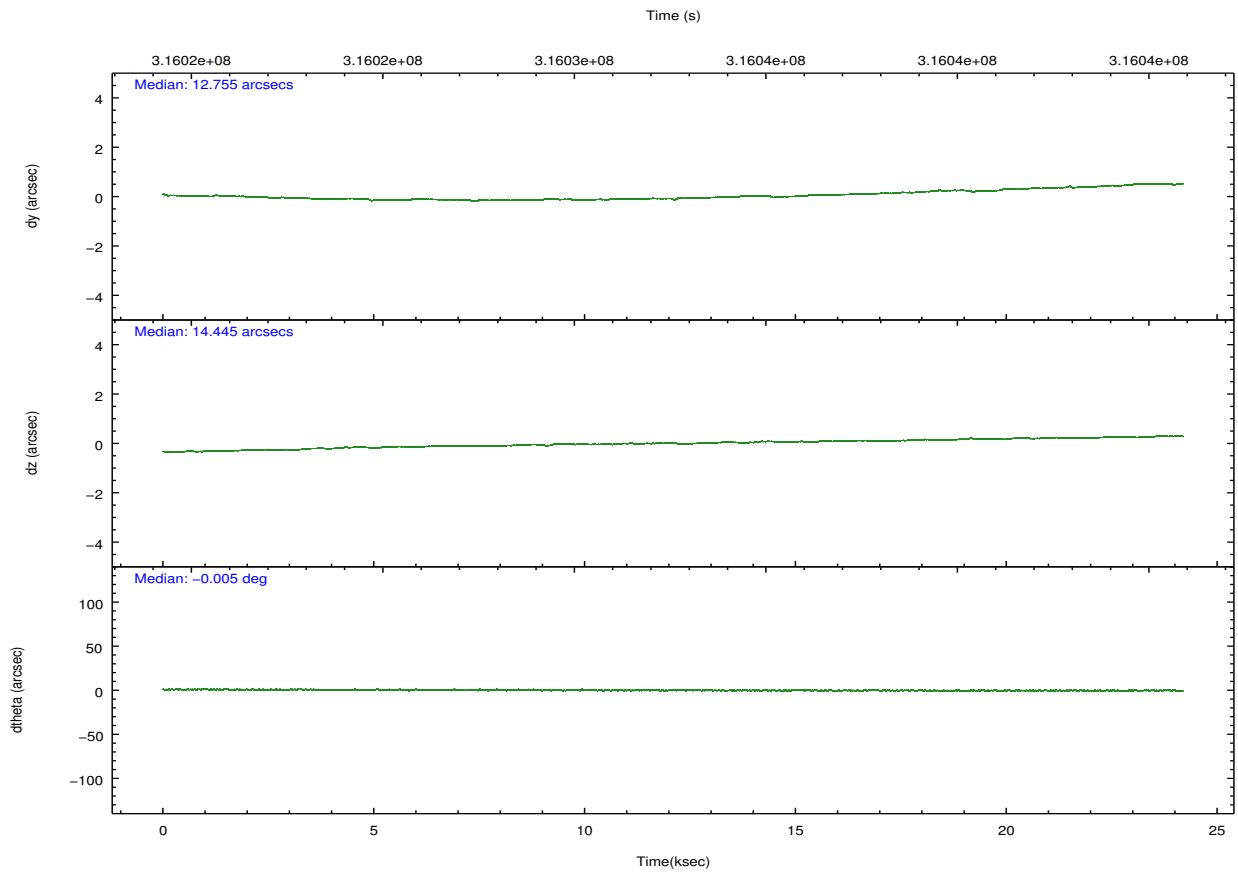
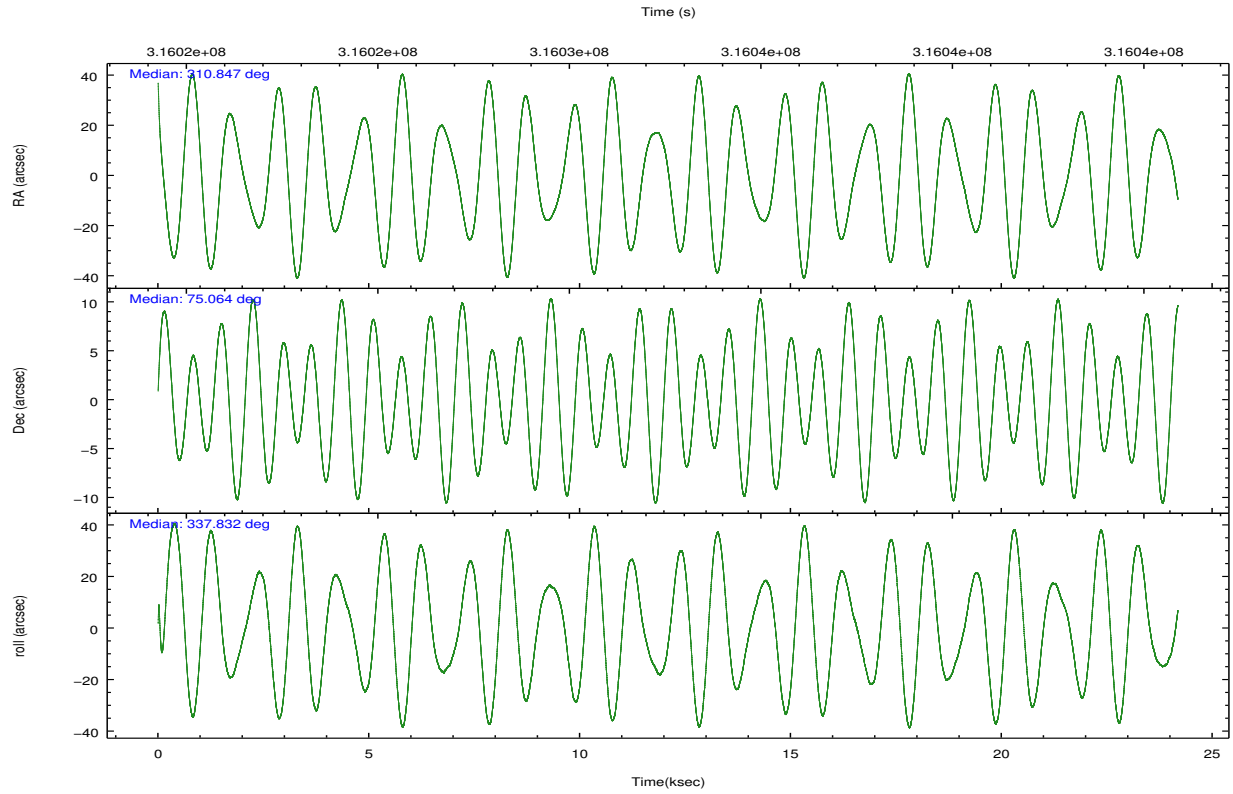
	ccd 2	ccd 3	ccd 6	ccd 7	ccd 8
grade 0 events	13070	12924	11694	20460	23227
	5%	5%	4%	5%	7%
grade 1 events	149	151	129	2041	241
	0%	0%	0%	0%	0%
grade 2 events	6005	5871	6236	38478	15702
	2%	2%	2%	10%	5%
grade 3 events	2530	2609	2805	16402	7522
	1%	1%	1%	4%	2%
grade 4 events	2609	2675	2584	16221	7020
	1%	1%	1%	4%	2%
grade 5 events	9190	10684	11018	34954	14714
	3%	4%	4%	9%	4%
grade 6 events	4640	4978	5910	86441	17987
	2%	2%	2%	22%	5%
grade 7 events	193414	184632	195953	167403	216487
	83%	82%	82%	43%	71%

2.2 Compared Parameters

Parameter	Planned	Actual	Parameter	Planned	Actual
Instrument	ACIS	ACIS	Obspar format version number	7	7
Detector	ACIS-23678	ACIS-23678	Obspar file type	PREDICTED	ACTUAL
Grating	NONE	NONE	Obspar update status	NONE	UPDATED
Data mode	VFAINT	VFAINT	CCD I0 on	N	N
Observation mode	POINTING	POINTING	CCD I1 on	N	N
[deg] Pointing RA	310.742592	310.8474488162494	CCD I2 on	O1	Y
[deg] Pointing Dec	75.059369	75.06353474371294	CCD I3 on	Y	Y
[deg] Pointing Roll	337.784928	337.8402681479924	CCD S0 on	N	N
[mm] SIM focus pos	-0.684267	-0.6828225247311905	CCD S1 on	N	N
[mm] SIM defocus	0	0.001444936568705701	CCD S2 on	Y	Y
[mm] SIM translation stage pos	-190.132523	-190.1400660498719	CCD S3 on	Y	Y
[mm] SIM translation stage offset	0	0.00754346686406393	CCD S4 on	Y	Y
[s] Observation start time (MET)	316020670.184000	316019713.57646	CCD S5 on	N	N
Observation start date	2008-01-06T15:30:05	2008-01-06T15:15:13	Number of optional ACIS chips dropped	0	0
[s] Observation end time (MET)	316044670.184000	316045274.5152	On-chip summing requested	N	N
Observation end date	2008-01-06T22:10:05	2008-01-06T22:21:14	Subarray requested	NONE	NONE
Read mode	TIMED	TIMED	Alternating exposures requested	N	N
			[s] Primary exposure time	0.000000	3.1

2.3 Aspect



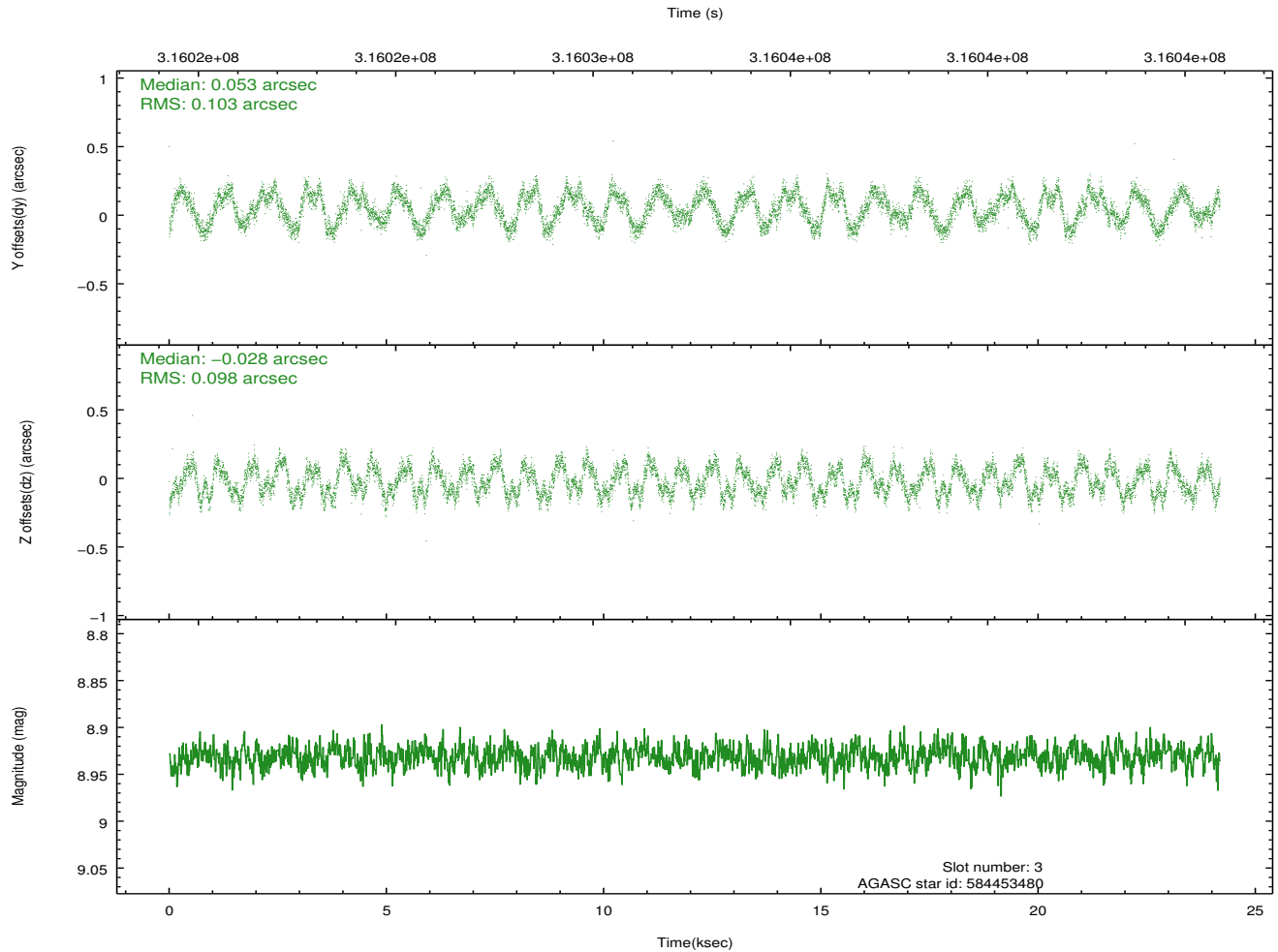
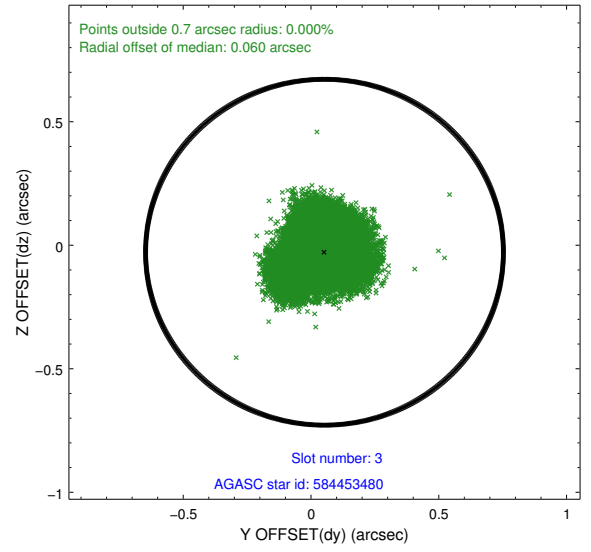
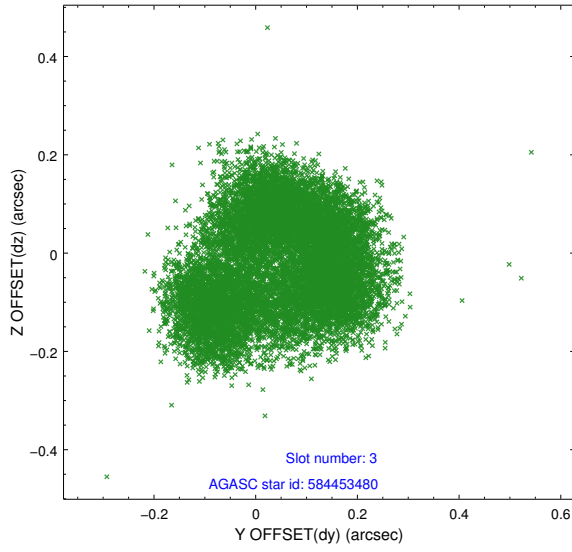


Slot Statistics

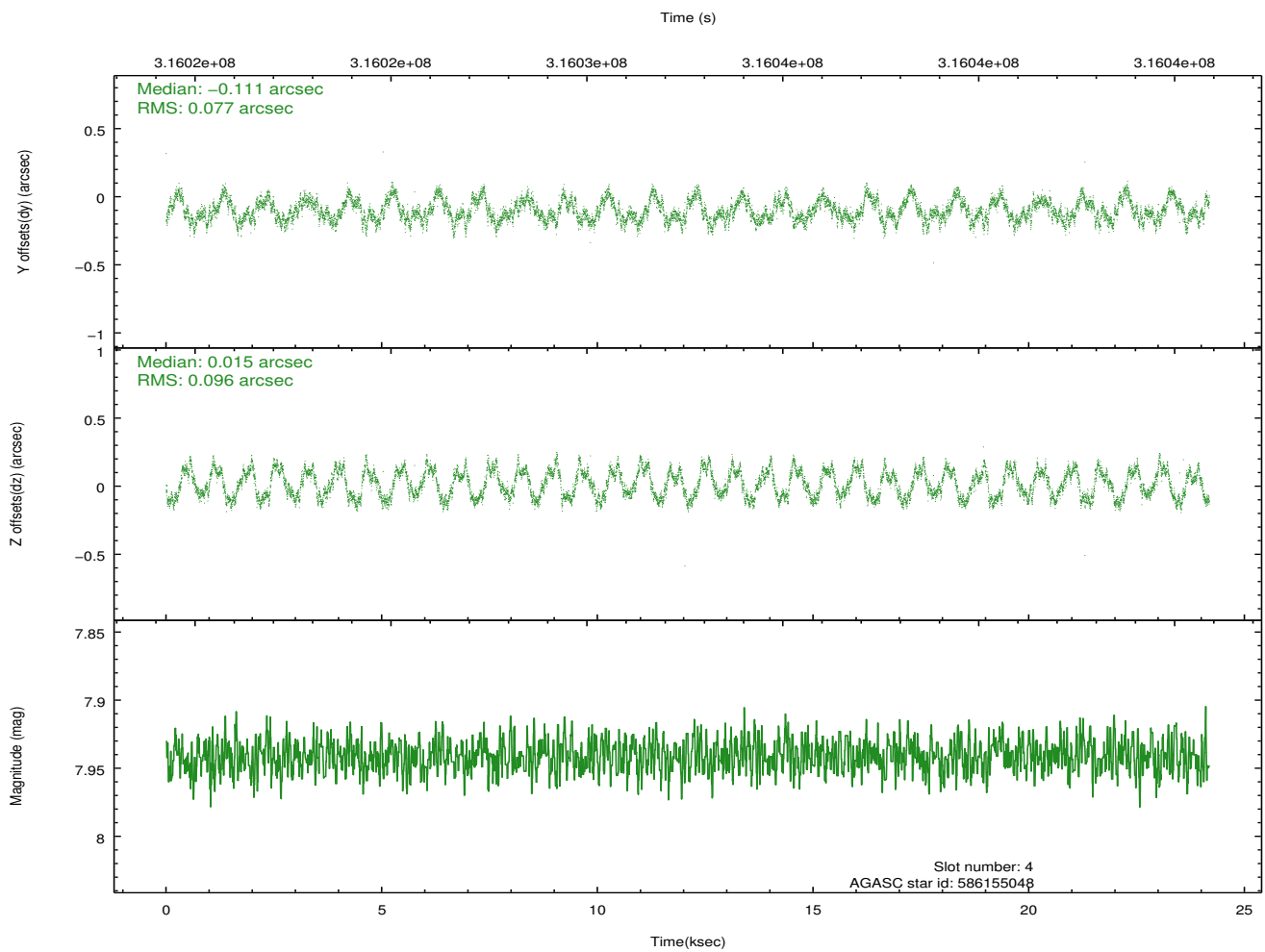
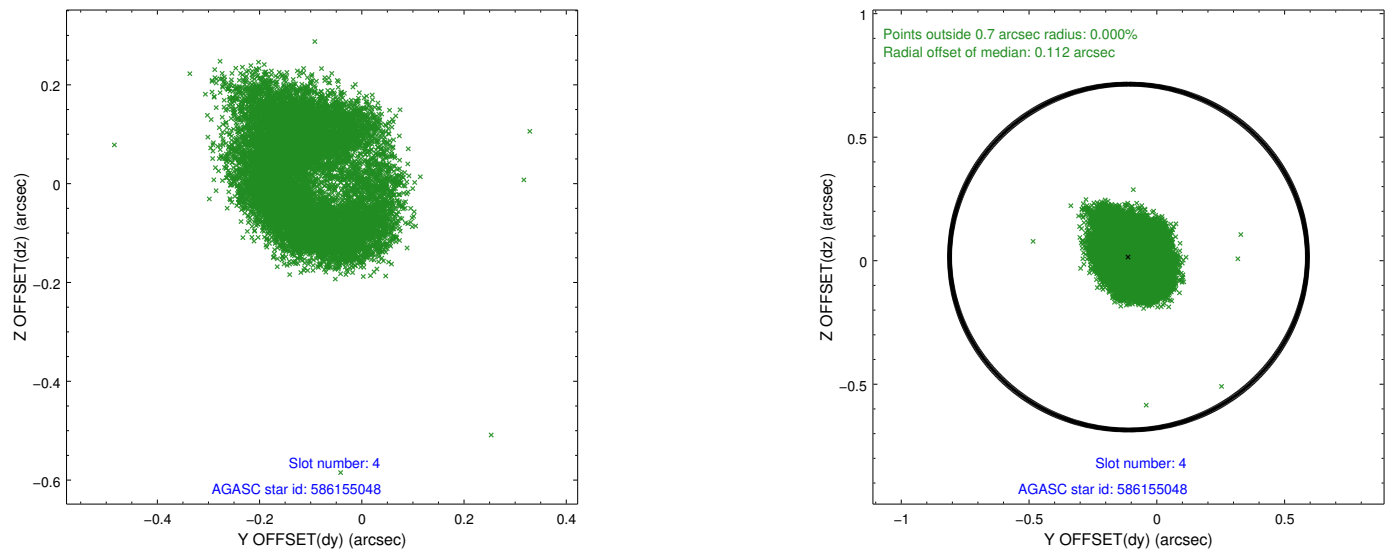
slot	status	id	mag	n_pts	med_dy	med_dz	dr1	dr2	ra	dec	mean_y	mean_z
0	FID	ACIS-S-2	7.09	5899	-0.048	-0.041	0.008	0.013	0.000000	0.000000	-765.75	-1735.86
1	FID	ACIS-S-4	7.19	5898	0.160	0.034	0.012	0.029	0.000000	0.000000	2147.66	172.60
2	FID	ACIS-S-5	7.23	5898	-0.145	0.015	0.010	0.020	0.000000	0.000000	-1818.55	166.36
3	GUIDE	584453480	8.93	11791	0.053	-0.028	0.157	0.218	311.245727	74.720187	903.40	-948.04
4	GUIDE	586155048	7.94	11797	-0.111	0.015	0.135	0.189	312.135794	74.489876	2011.37	-1375.86
5	GUIDE	601098528	9.11	11782	0.066	0.047	0.133	0.194	310.058226	75.008164	-521.00	-408.44
6	GUIDE	601099480	9.89	11736	0.012	0.128	0.344	0.457	313.504982	75.400753	1833.12	2139.83
7	GUIDE	601098920	9.89	11774	0.011	-0.142	0.136	0.218	312.140939	75.193994	1002.25	949.04

2.4 Star Slots

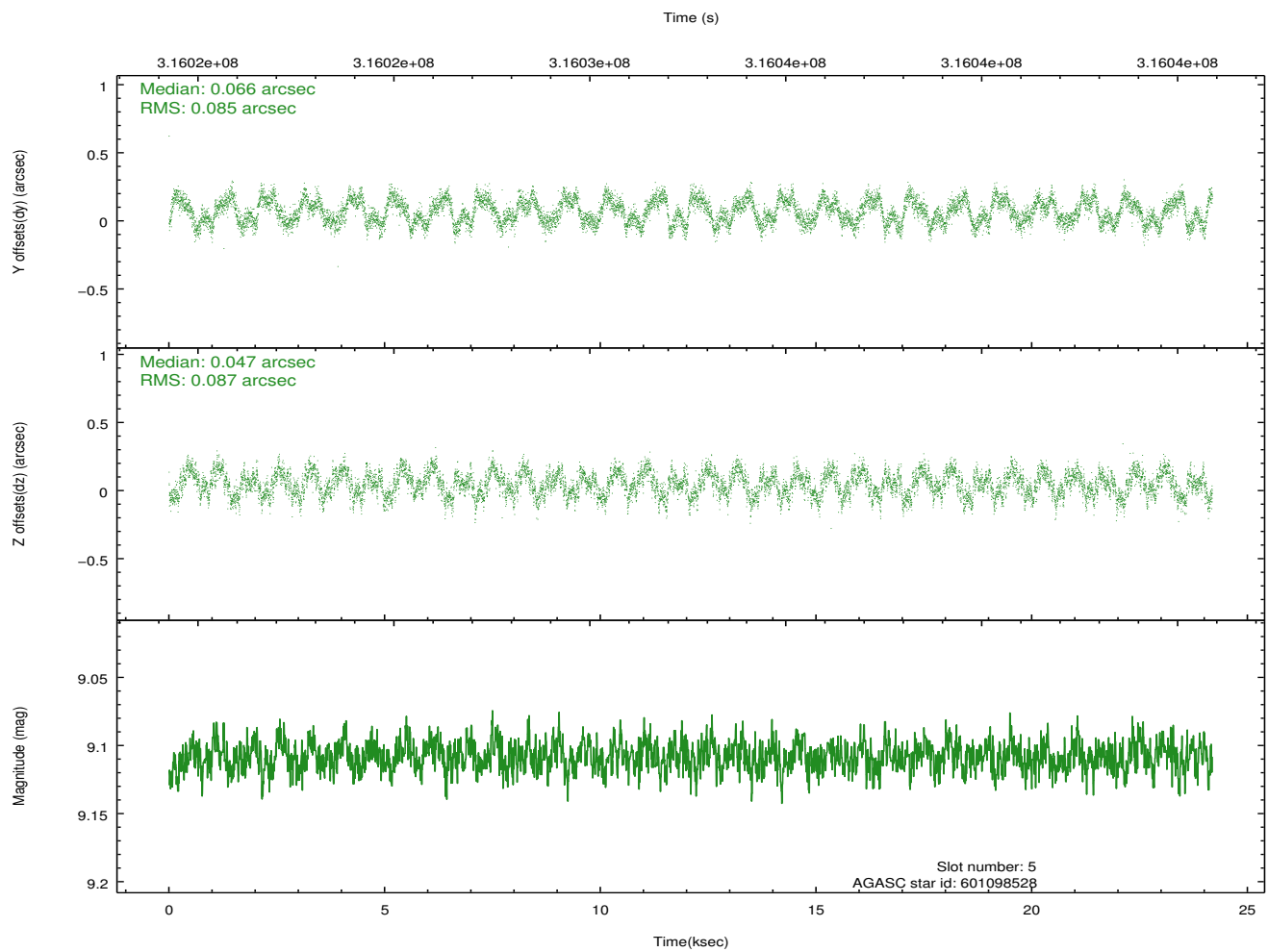
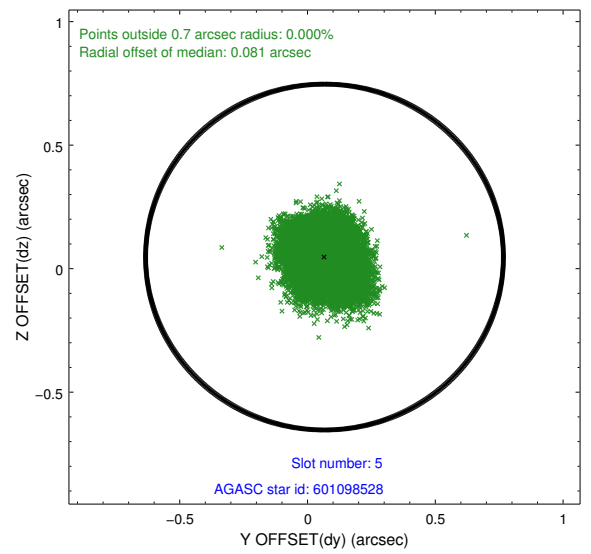
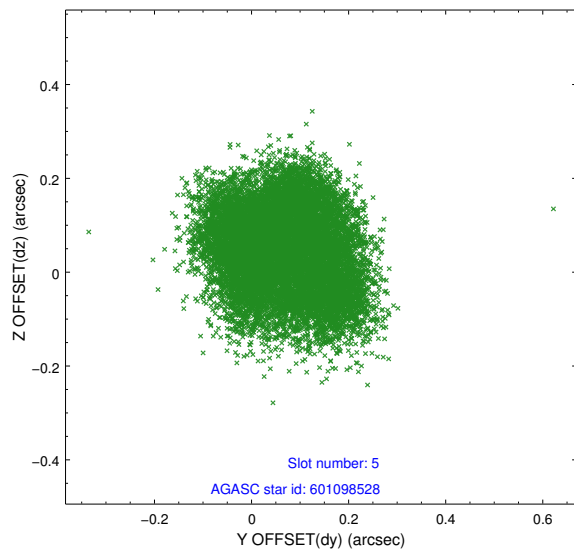
2.4.1 Slot 3



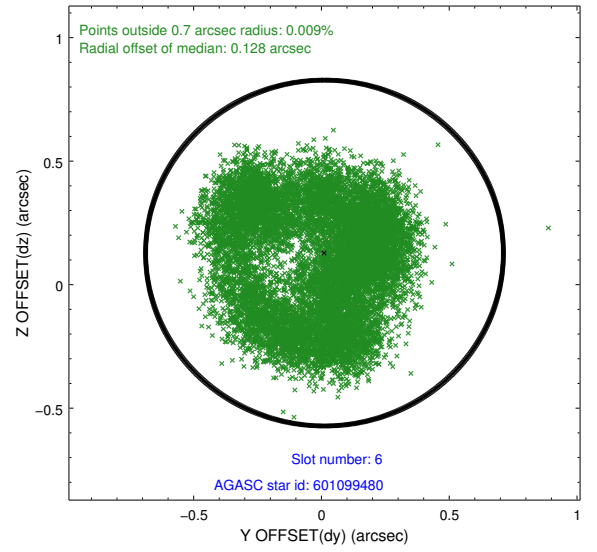
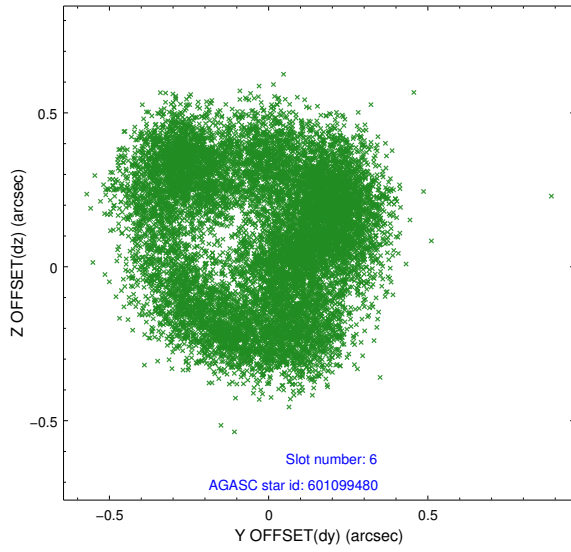
2.4.2 Slot 4



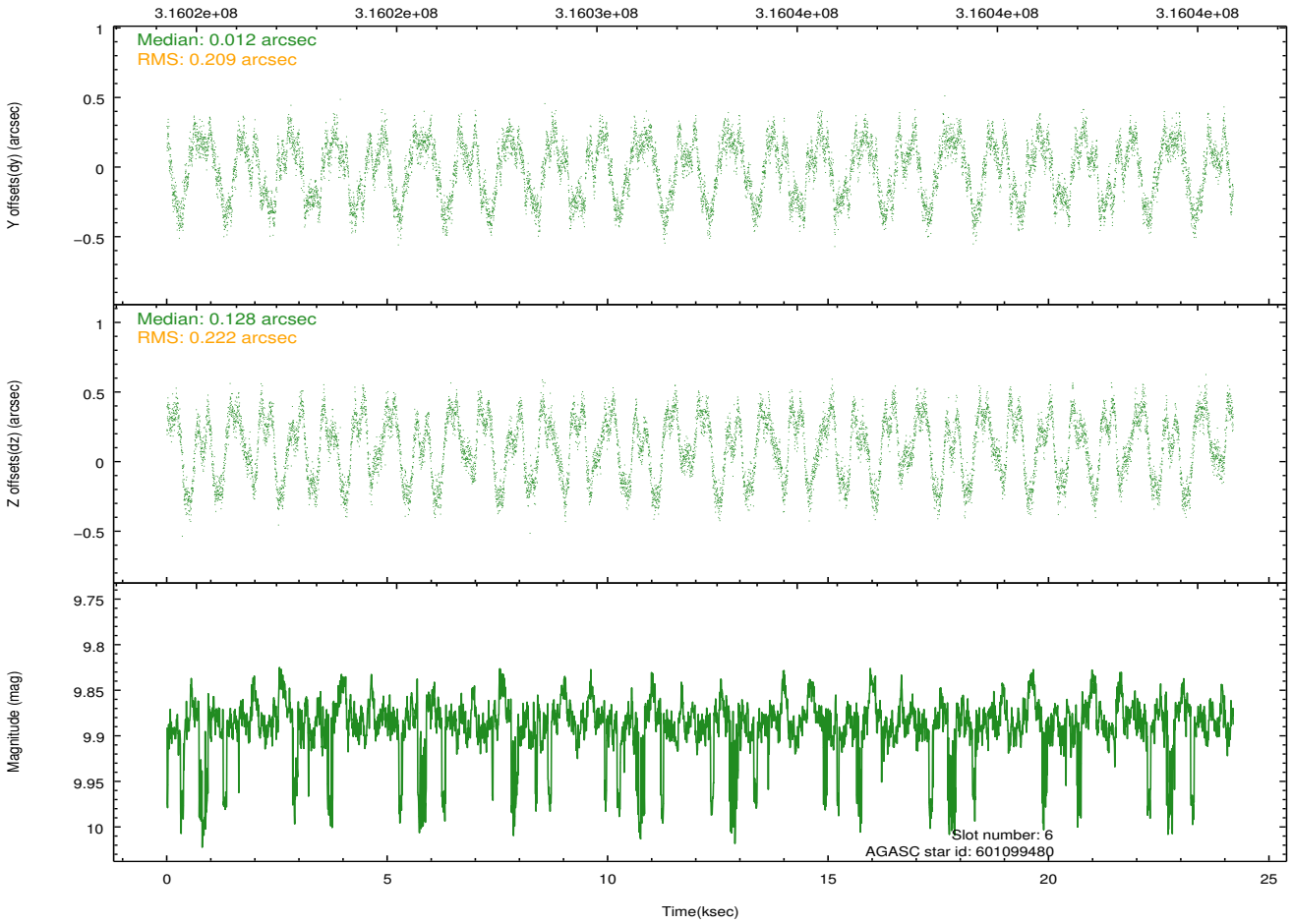
2.4.3 Slot 5



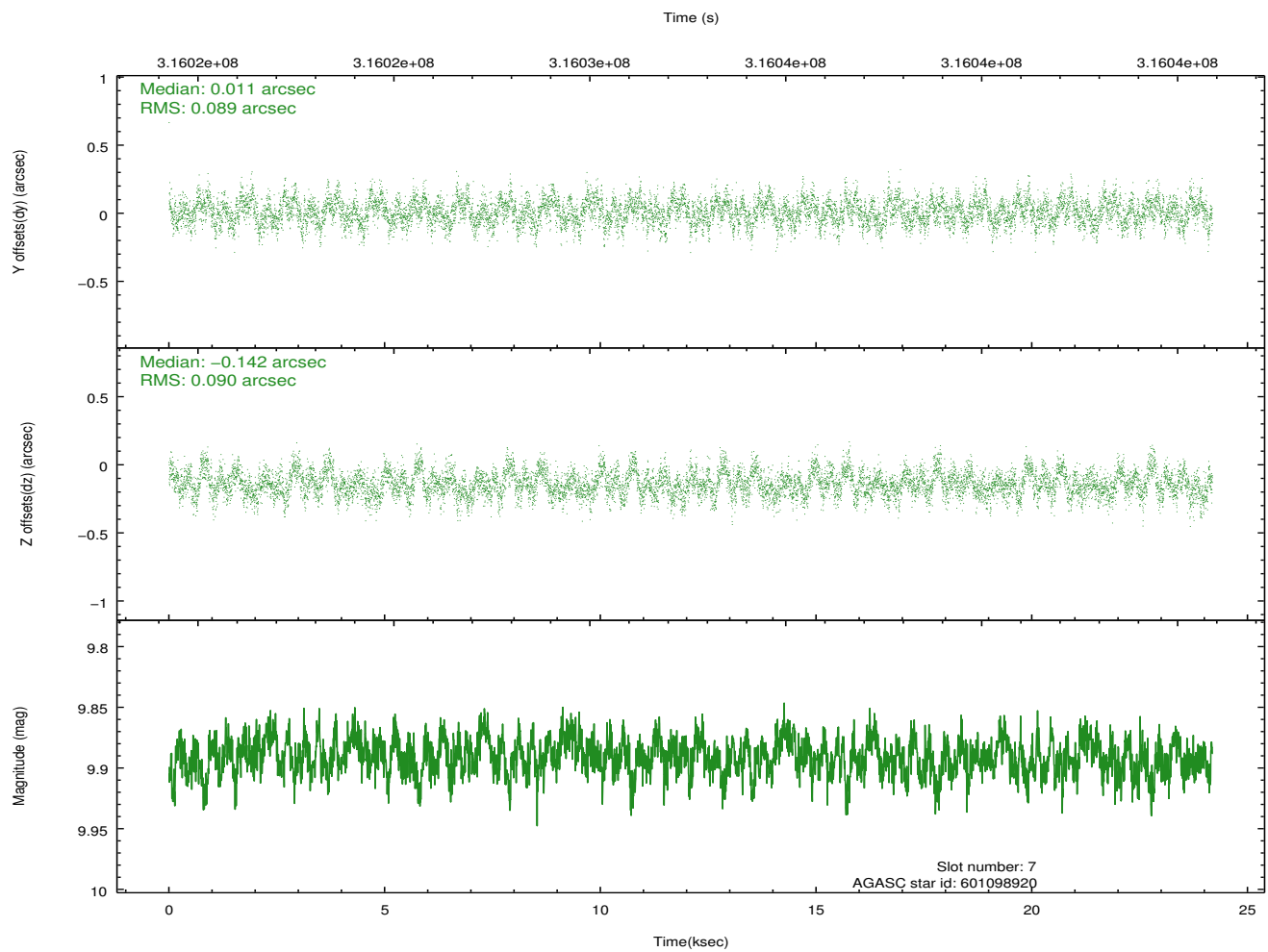
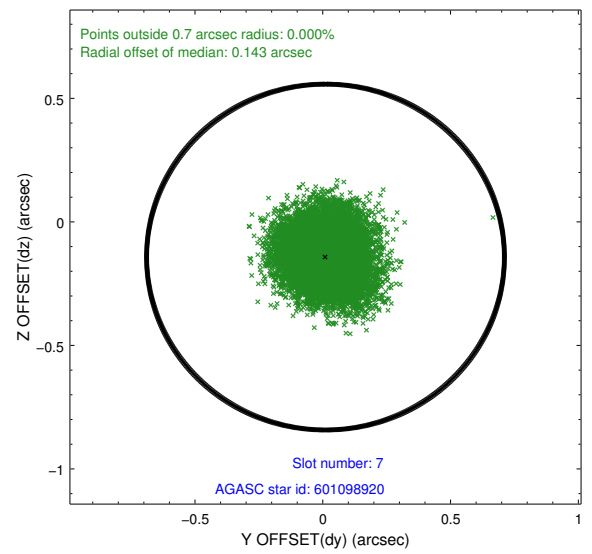
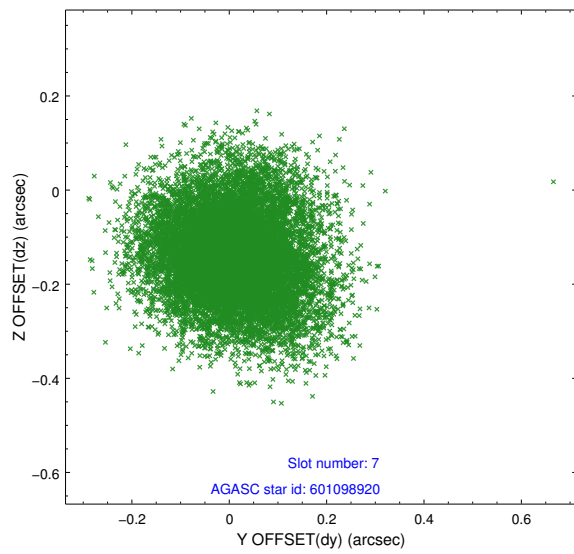
2.4.4 Slot 6



Time (s)

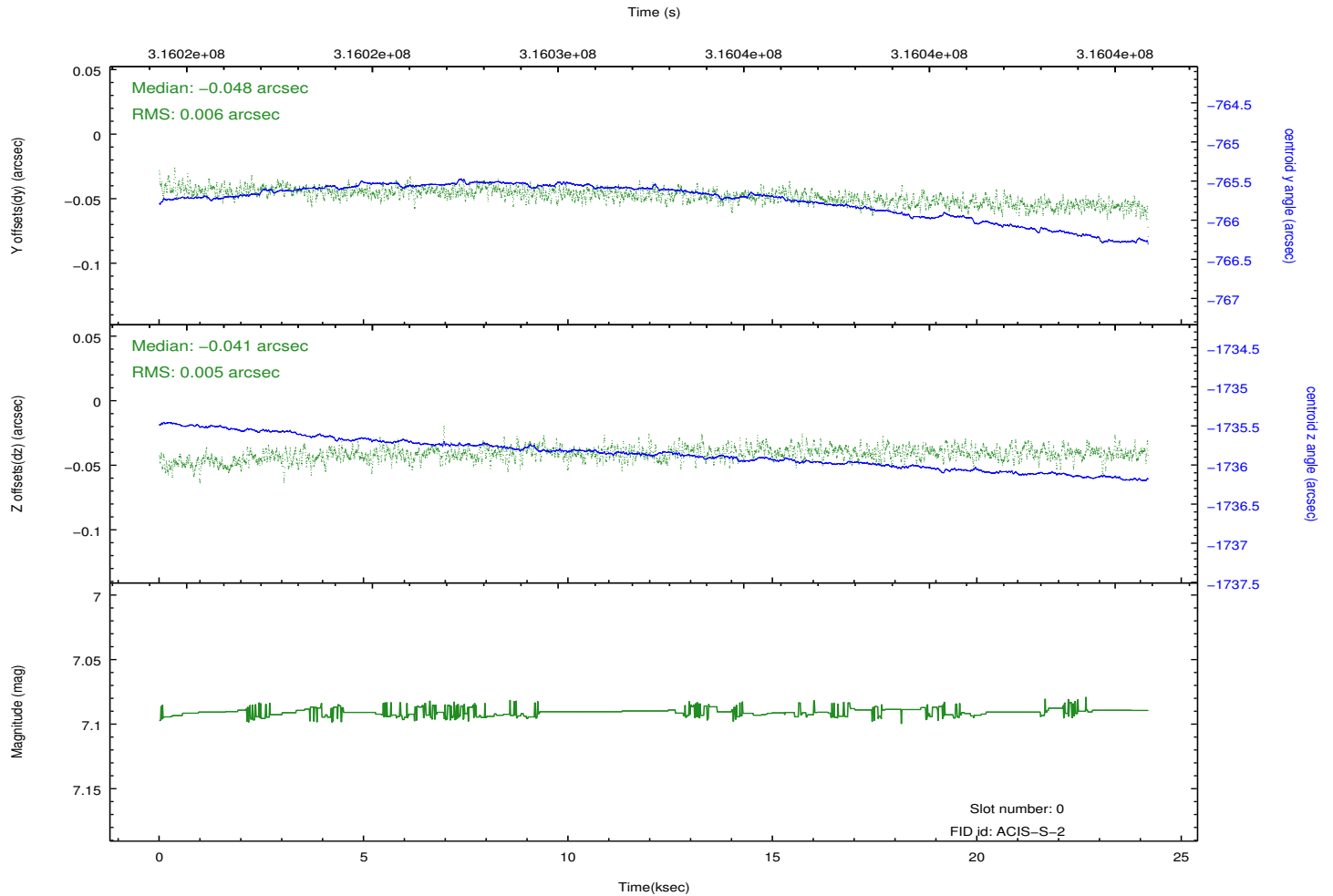
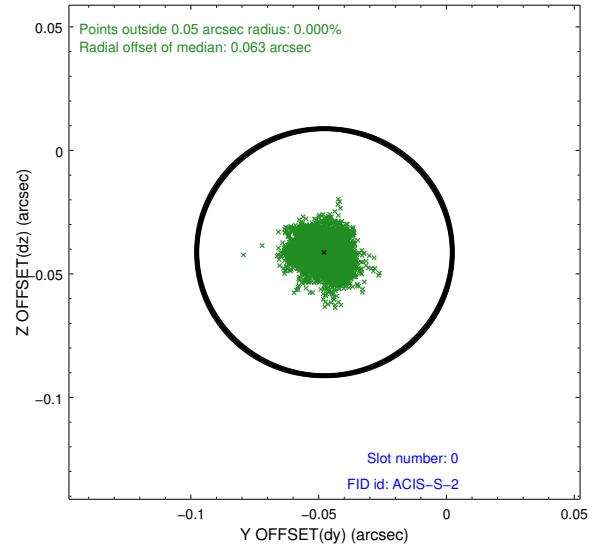
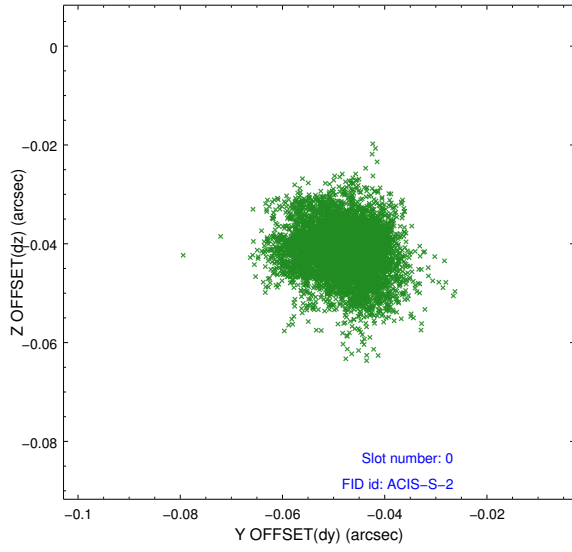


2.4.5 Slot 7

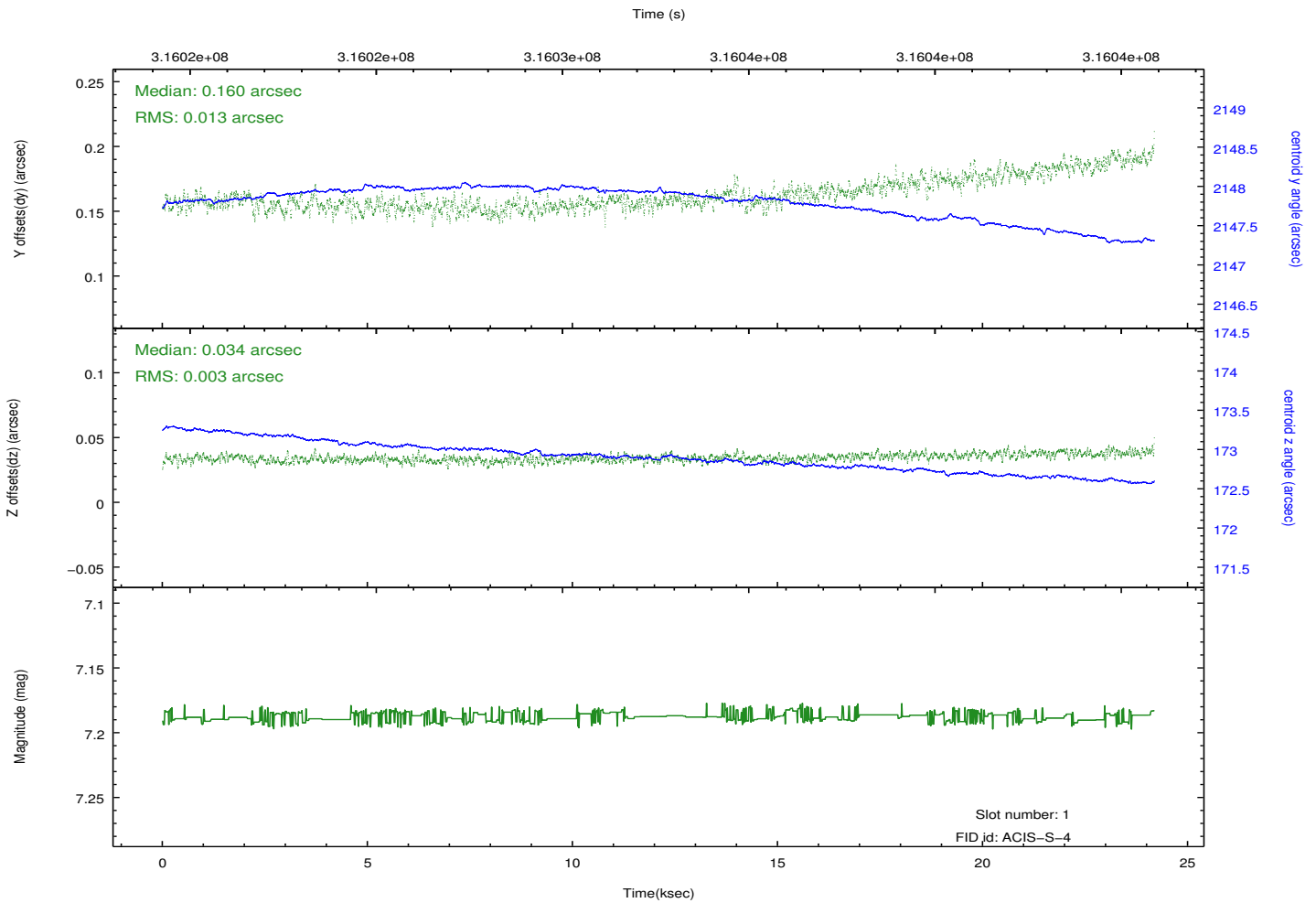
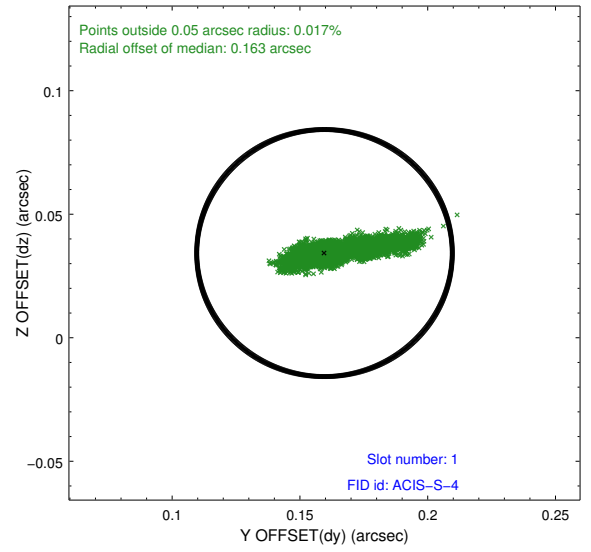
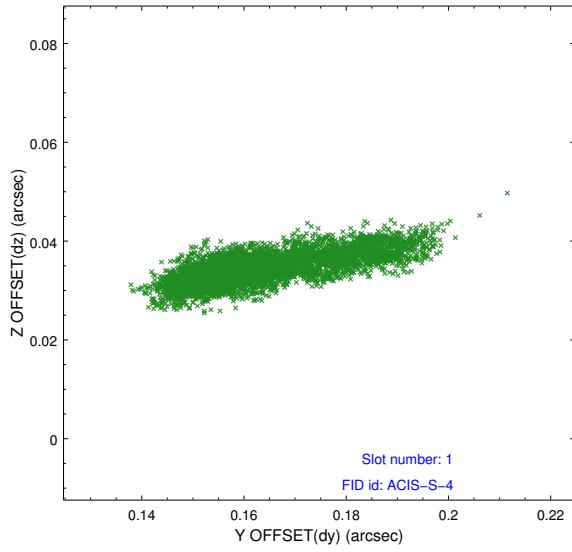


2.5 FID Slots

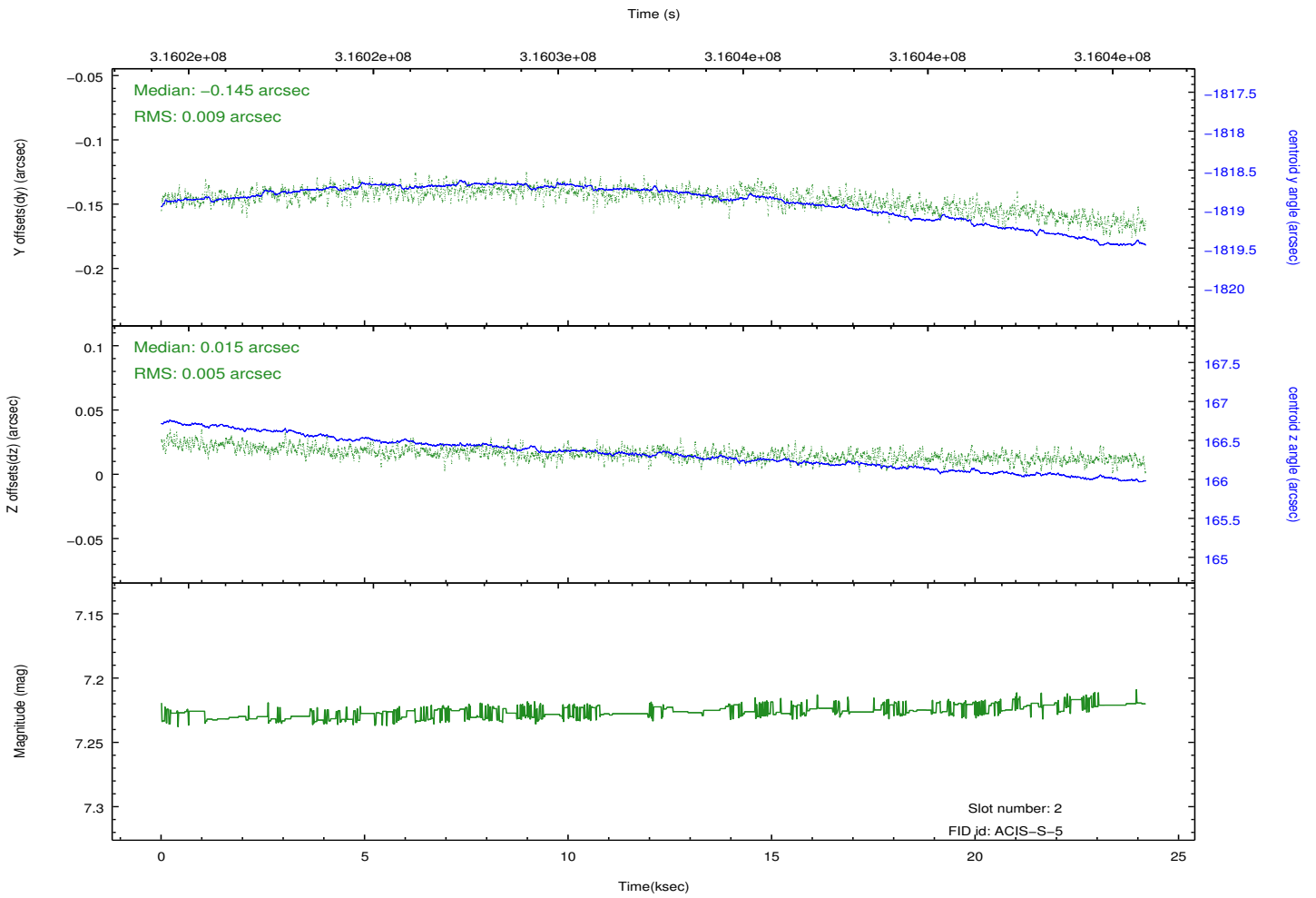
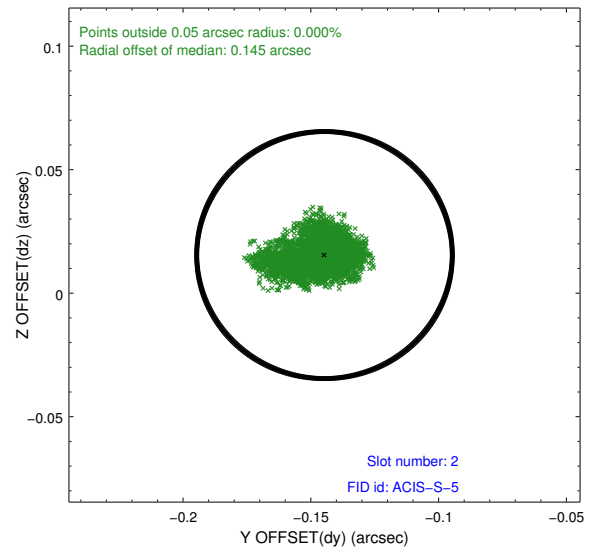
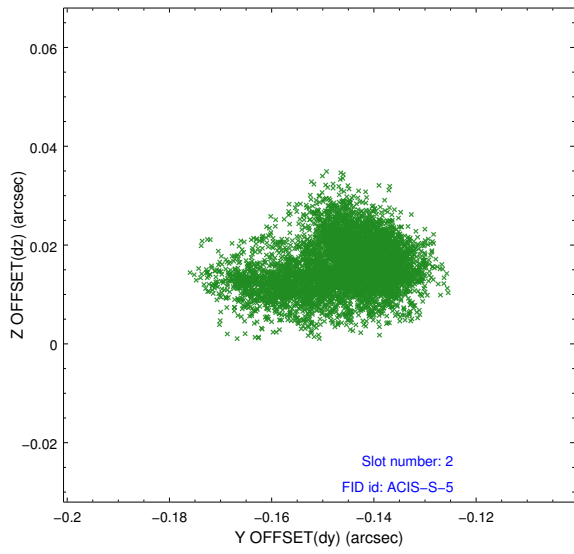
2.5.1 Slot 0



2.5.2 Slot 1



2.5.3 Slot 2



A Summary

A.1 Status

V&V Scientist	Joy Nichols
V&V Date (YYYY-MM-DD)	2012.05.30
V&V Edition	1
V&V Disposition and Status	OK
V&V Charge Time	24.0870001

A.2 Comments