

V&V Reference Report

L2 ASCDS Version : 8.4.4

Observation 9371 - L2 Version 2
Chandra X-Ray Center

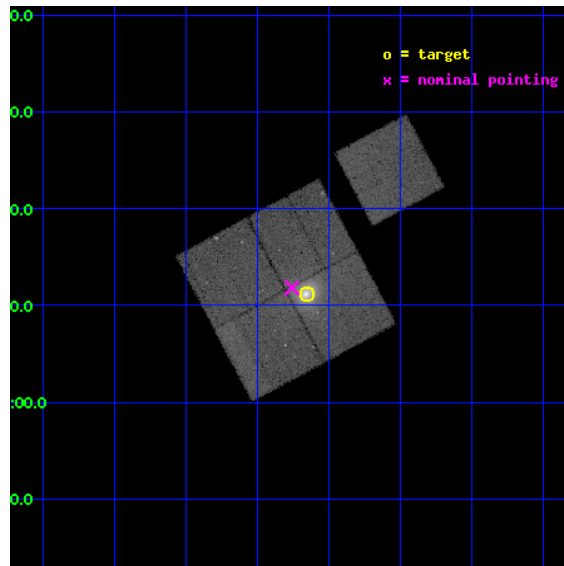
L2 Processing Date : May 8 2012

Contents

1	Front	2
2	OBI	3
2.1	OBI	3
2.1.1	Images	3
2.1.2	Bias	3
2.1.3	Parameters	4
2.1.4	Events	4
2.2	Compared Parameters	5
2.3	Aspect	6
2.4	Star Slots	9
2.4.1	Slot 3	9
2.4.2	Slot 4	10
2.4.3	Slot 5	11
2.4.4	Slot 6	12
2.4.5	Slot 7	13
2.5	FID Slots	14
2.5.1	Slot 0	14
2.5.2	Slot 1	15
2.5.3	Slot 2	16
A	Summary	17
A.1	Status	17
A.2	Comments	17

1 Front

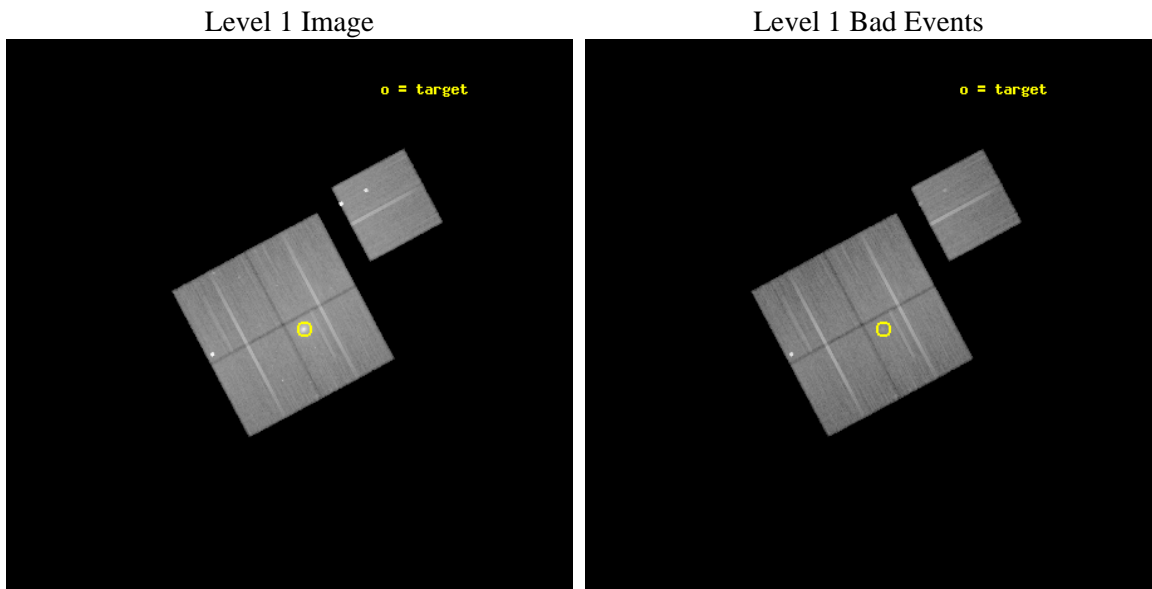
seq_num	800708	Sequence number
obs_id	9371	Observation id
title	Probing Dark Energy with Relaxed Galaxy Clusters	Proposal title
observer	Prof. Steven Allen	Principal investigator
object	Zwicky 3146	Source name
dtcycle	0	
cycle	P	events from which exps? Prim/Second/Both
ra_targ	155.914167	Observer's specified target RA [deg]
dec_targ	4.187306	Observer's specified target Dec [deg]
ra_nom	155.9404248979	Nominal RA [deg]
dec_nom	4.1971042965249	Nominal Dec [deg]
roll_nom	61.902776564247	Nominal Roll [deg]
revision	2	Processing version of data
ontime	40693.495301485	Sum of GTIs [s]
livetime	40161.804827256	Livetime [s]
ontime0	40706.059302807	Sum of GTIs [s]
ontime1	40696.636262119	Sum of GTIs [s]
ontime2	40702.918302536	Sum of GTIs [s]
ontime3	40693.495301485	Sum of GTIs [s]
ontime6	40702.918292642	Sum of GTIs [s]
l2events	190074	Number of level 2 events



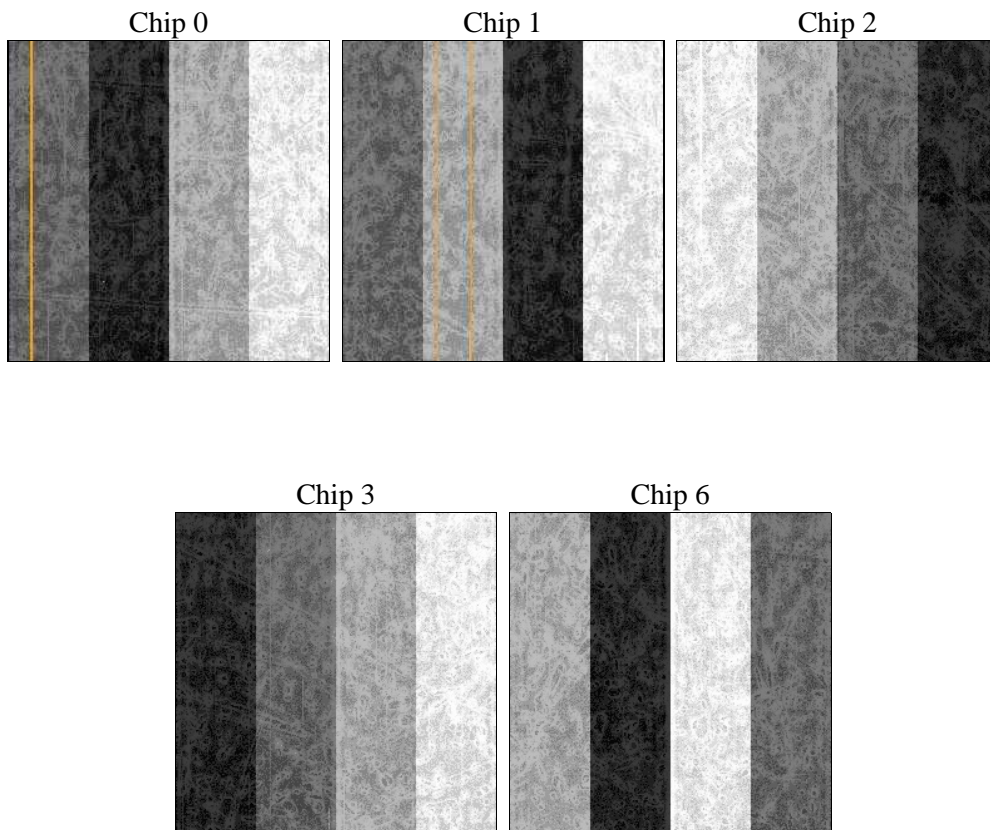
2 OBI

2.1 OBI

2.1.1 Images



2.1.2 Bias



2.1.3 Parameters

obi_num	0	Obi number	sched_exp_time	40578.227000	[s] Scheduled observation exposure time
ascdsver	8.4.4	Processing system revision	ontime	40693.495301485	Sum of GTIs [s]
caldsver	4.4.9	 	ontime0	40706.059302807	Sum of GTIs [s]
date	2012-05-08T04:06:53	Date and time of file creation	ontime1	40696.636262119	Sum of GTIs [s]
revision	2	Processing version of data	ontime2	40702.918302536	Sum of GTIs [s]
			ontime3	40693.495301485	Sum of GTIs [s]
			ontime6	40702.918292642	Sum of GTIs [s]
			l1events	1751729	Number of level 1 events

2.1.4 Events

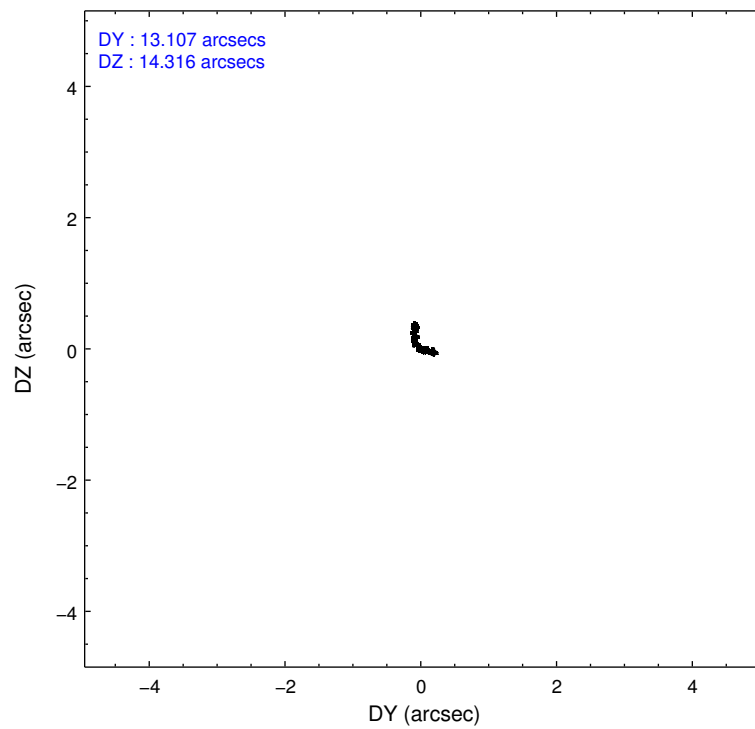
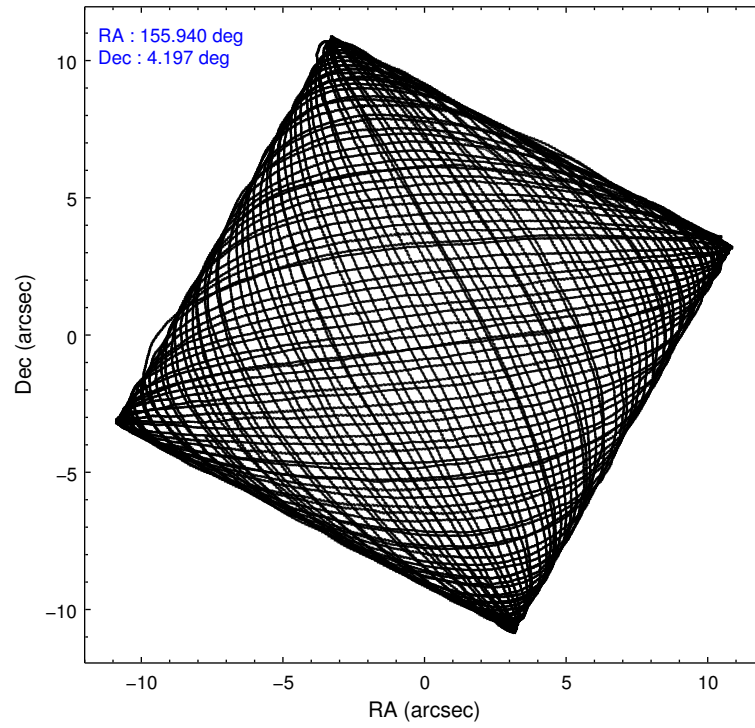
	ccd 0	ccd 1	ccd 2	ccd 3	ccd 6
level 1 events	334273	312507	351052	384458	369439
rejected events	288269	273806	317303	305575	299496
rejected %	86%	87%	90%	79%	81%

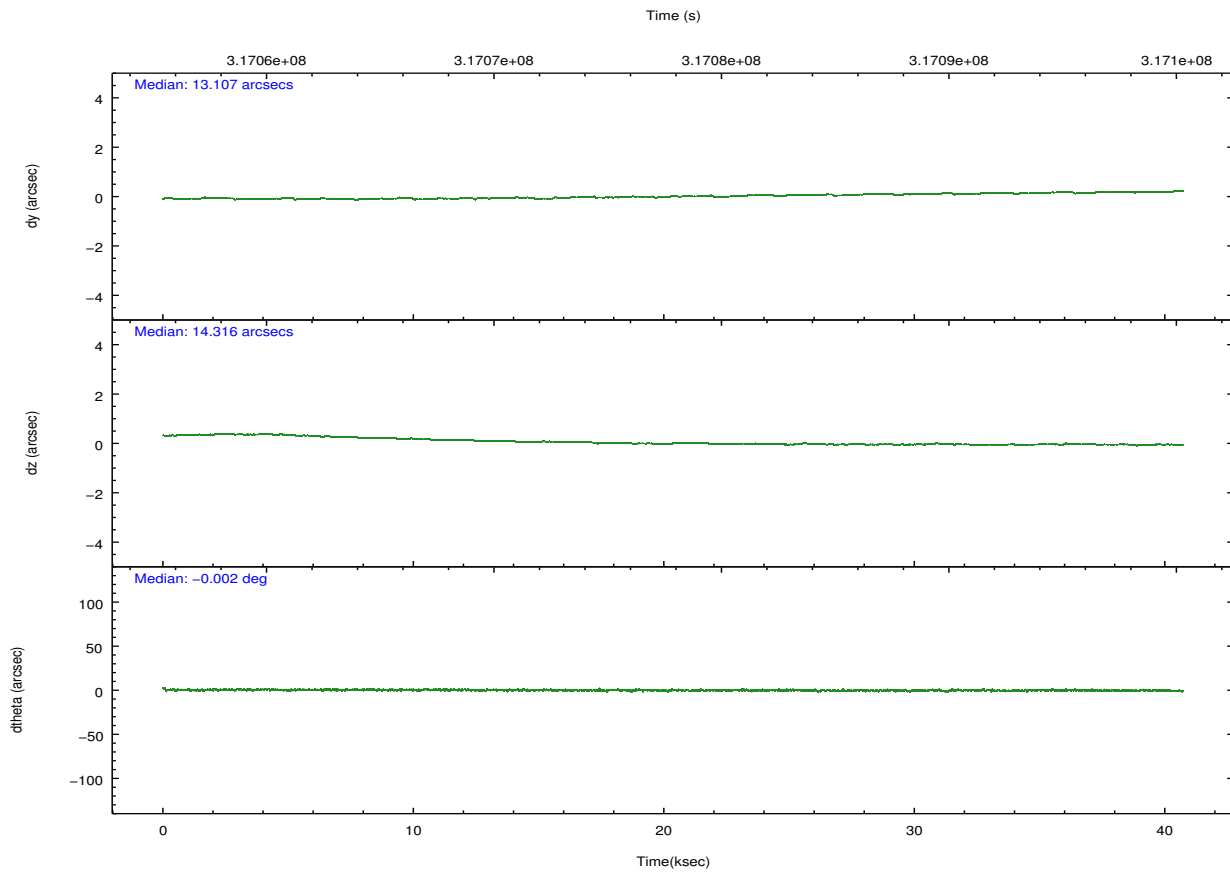
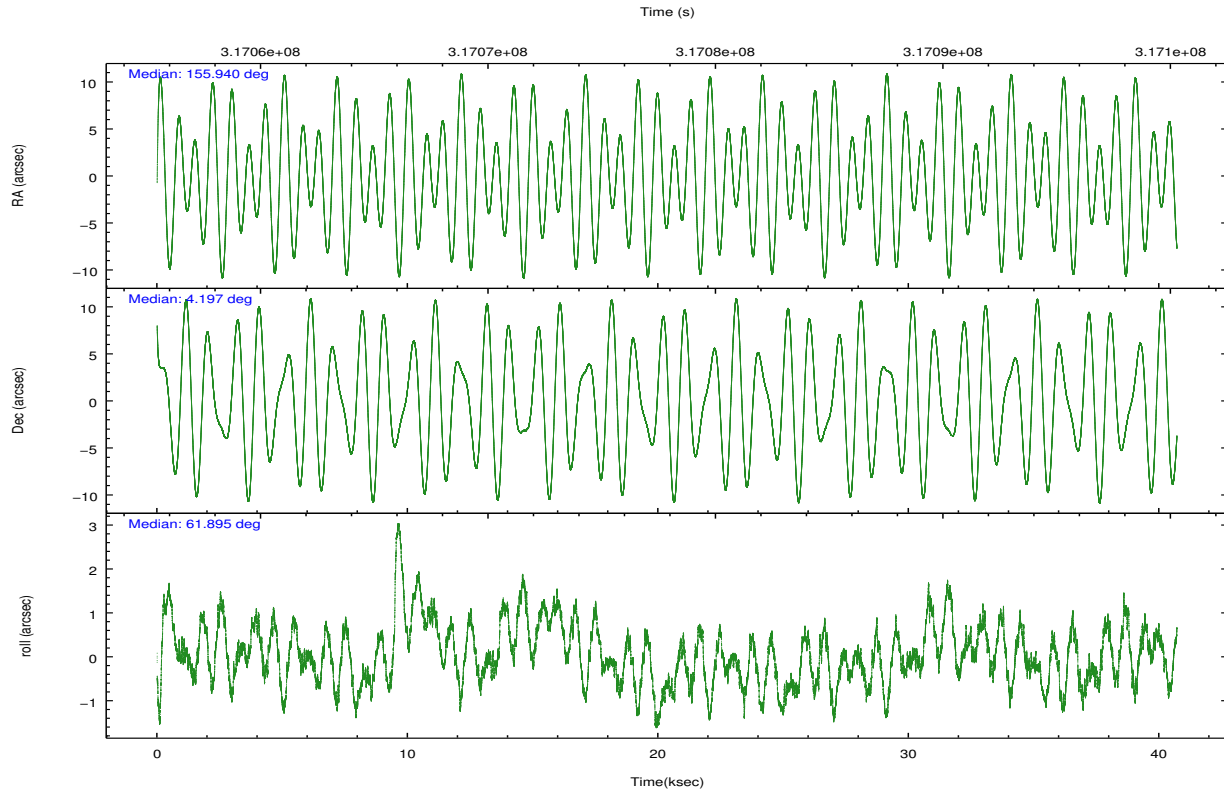
	ccd 0	ccd 1	ccd 2	ccd 3	ccd 6
grade 0 events	24530	14940	13203	50440	48406
	7%	4%	3%	13%	13%
grade 1 events	12601	213	218	480	688
	3%	0%	0%	0%	0%
grade 2 events	8120	8644	7781	11743	7456
	2%	2%	2%	3%	2%
grade 3 events	3796	3900	3540	4884	3777
	1%	1%	1%	1%	1%
grade 4 events	3485	3948	3524	4812	3658
	1%	1%	1%	1%	0%
grade 5 events	11544	12478	10967	13579	13078
	3%	3%	3%	3%	3%
grade 6 events	6517	7674	6045	7544	7362
	1%	2%	1%	1%	1%
grade 7 events	263680	260710	305774	290976	285014
	78%	83%	87%	75%	77%

2.2 Compared Parameters

Parameter	Planned	Actual	Parameter	Planned	Actual
Instrument	ACIS	ACIS	Obspar format version number	7	7
Detector	ACIS-01236	ACIS-01236	Obspar file type	PREDICTED	ACTUAL
Grating	NONE	NONE	Obspar update status	NONE	UPDATED
Data mode	VFAINT	VFAINT	CCD I0 on	Y	Y
Observation mode	POINTING	POINTING	CCD I1 on	Y	Y
[deg] Pointing RA	155.941443	155.9404248978981	CCD I2 on	Y	Y
[deg] Pointing Dec	4.169633	4.197104296524946	CCD I3 on	Y	Y
[deg] Pointing Roll	61.694012	61.90277656424673	CCD S0 on	N	N
[mm] SIM focus pos	-0.782348	-0.7809083437167272	CCD S1 on	N	N
[mm] SIM defocus	0	0.001439871863259334	CCD S2 on	O1	Y
[mm] SIM translation stage pos	-233.592463	-233.5874344608287	CCD S3 on	N	N
[mm] SIM translation stage offset	0	-0.005018542100998502	CCD S4 on	N	N
[s] Observation start time (MET)	317057650.184000	317056457.05168	CCD S5 on	N	N
Observation start date	2008-01-18T15:33:05	2008-01-18T15:14:17	Number of optional ACIS chips dropped	0	0
[s] Observation end time (MET)	317098228.184000	317098462.06622	On-chip summing requested	N	N
Observation end date	2008-01-19T02:49:23	2008-01-19T02:54:22	Subarray requested	NONE	NONE
Read mode	TIMED	TIMED	Alternating exposures requested	N	N
			[s] Primary exposure time	0.000000	3.1

2.3 Aspect



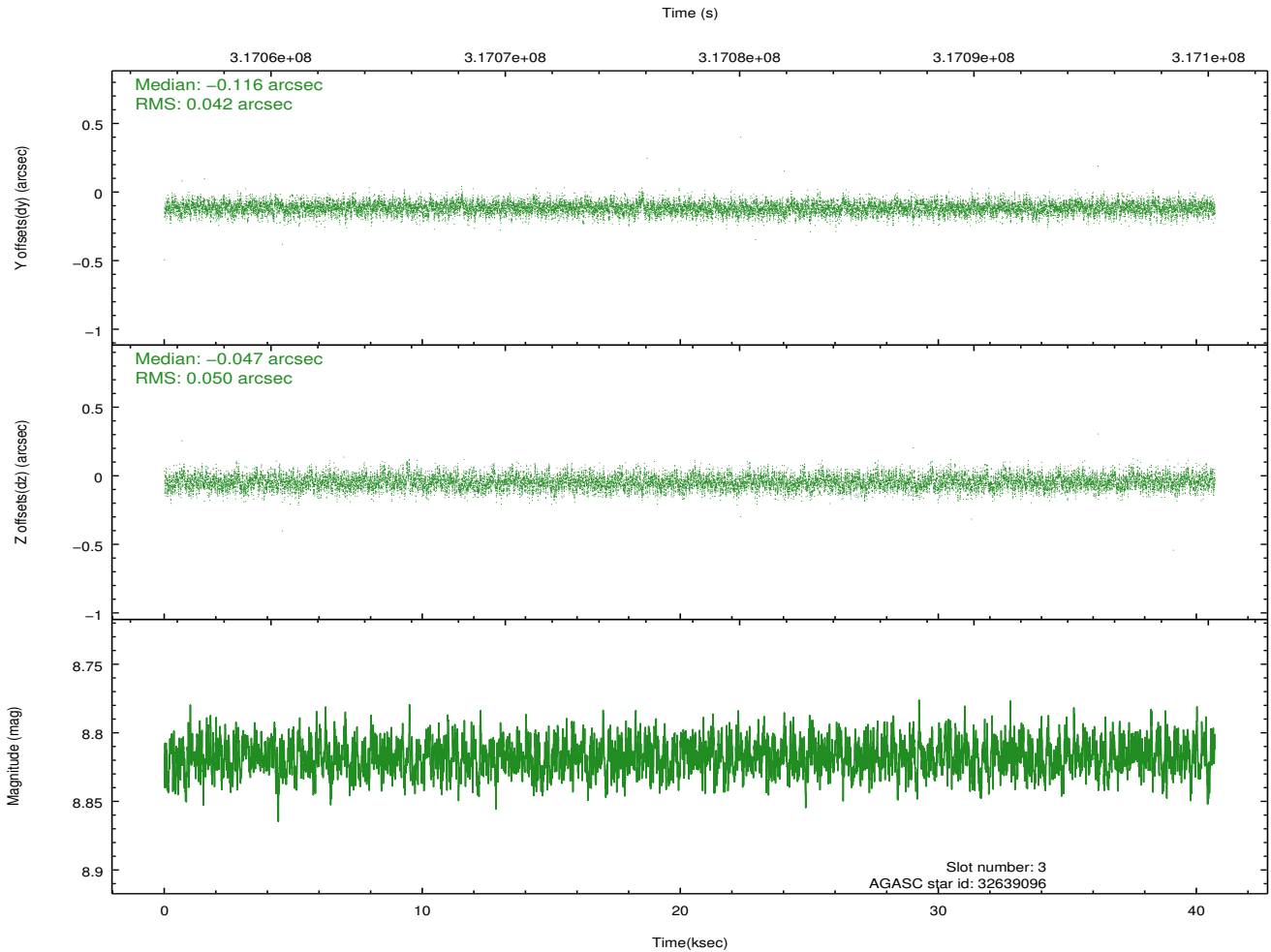
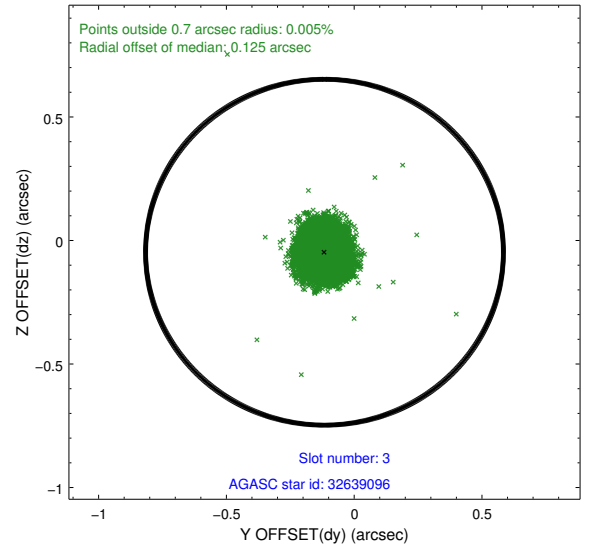
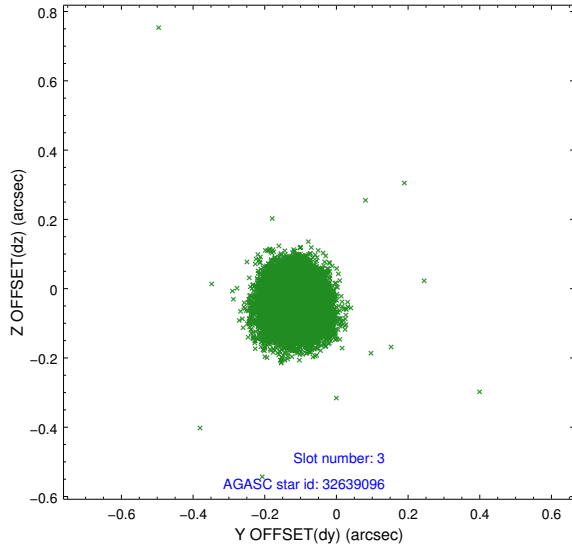


Slot Statistics

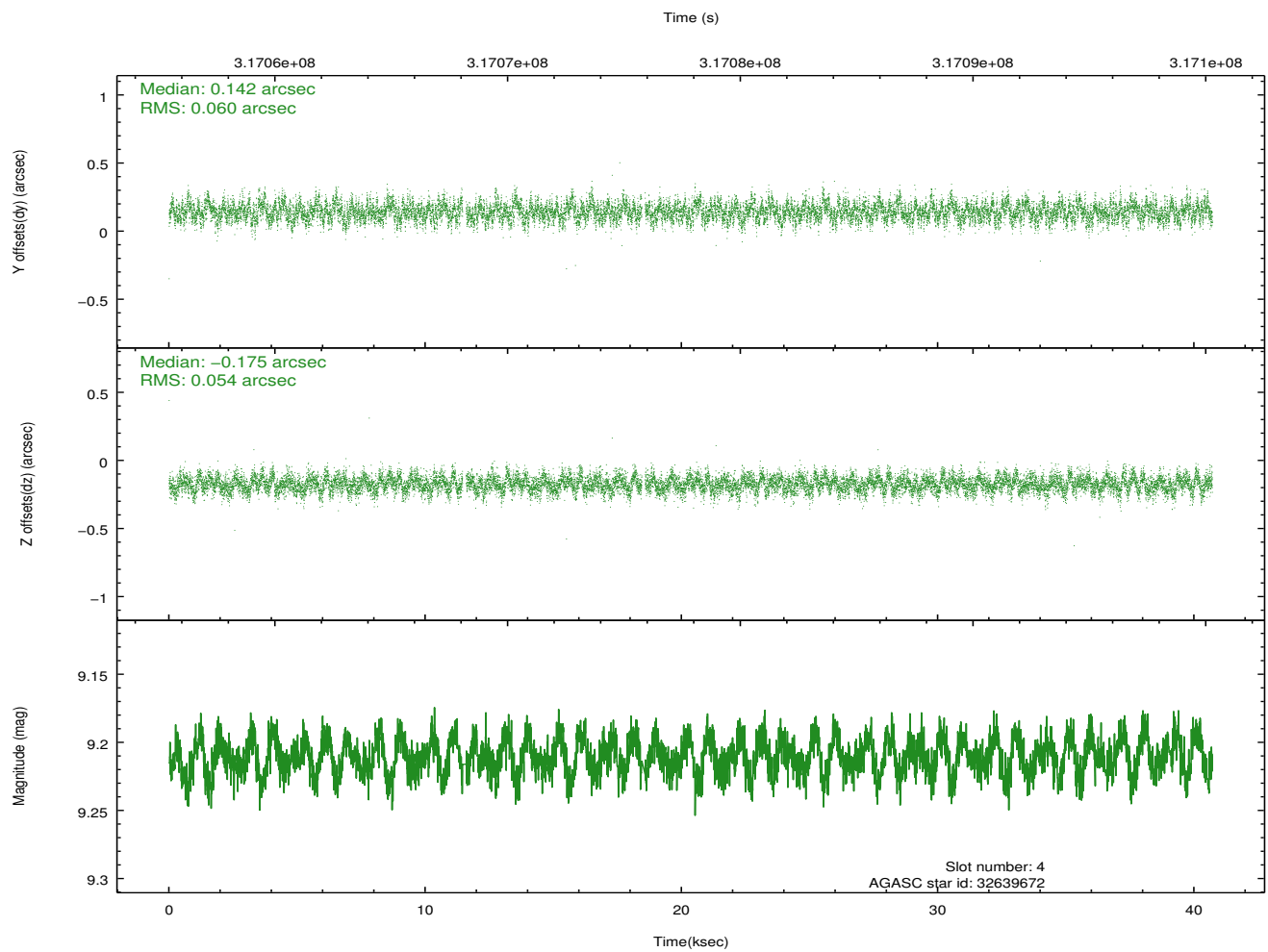
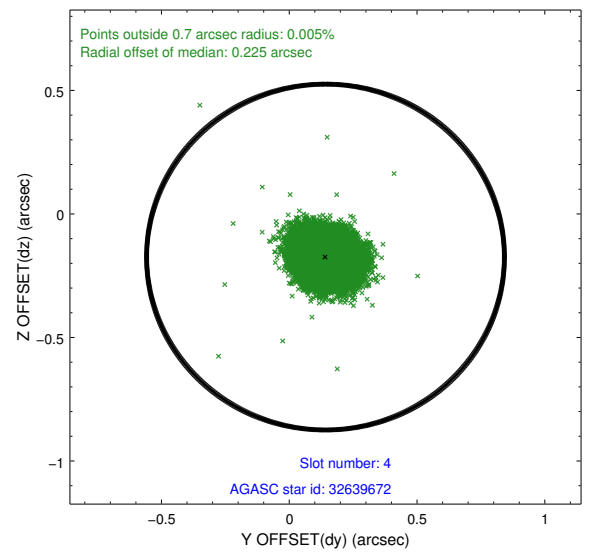
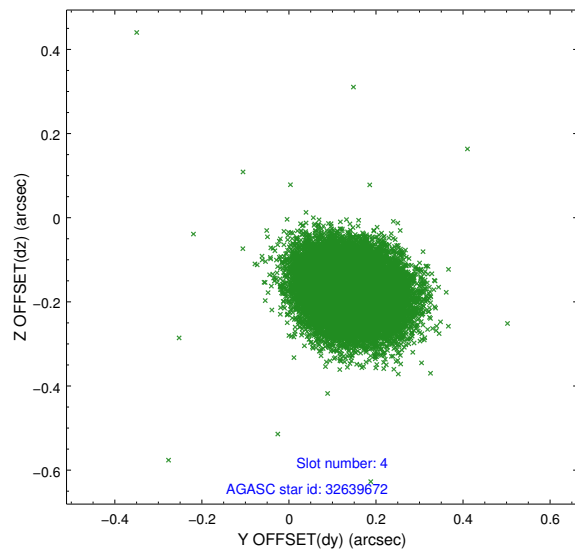
slot	status	id	mag	n_pts	med_dy	med_dz	dr1	dr2	ra	dec	mean_y	mean_z
0	FID	ACIS-I-1	7.23	9929	-0.019	0.026	0.009	0.017	0.000000	0.000000	926.37	-837.94
1	FID	ACIS-I-4	7.16	9929	0.189	0.015	0.008	0.014	0.000000	0.000000	2146.63	1061.85
2	FID	ACIS-I-5	7.22	9930	-0.268	0.030	0.008	0.014	0.000000	0.000000	-1821.86	1059.72
3	GUIDE	32639096	8.82	19850	-0.116	-0.047	0.069	0.113	155.596152	4.431941	243.79	1539.49
4	GUIDE	32639672	9.21	19712	0.142	-0.175	0.086	0.138	155.236225	3.954176	-1883.11	1862.77
5	GUIDE	32640976	9.22	19849	0.057	0.147	0.093	0.156	155.221826	3.864945	-2190.53	1756.49
6	GUIDE	32645952	7.79	19859	-0.046	-0.225	0.065	0.105	155.433347	4.300135	-451.22	1829.34
7	GUIDE	32649208	7.07	19792	-0.037	0.296	0.077	0.127	156.538344	3.932532	266.11	-2291.05

2.4 Star Slots

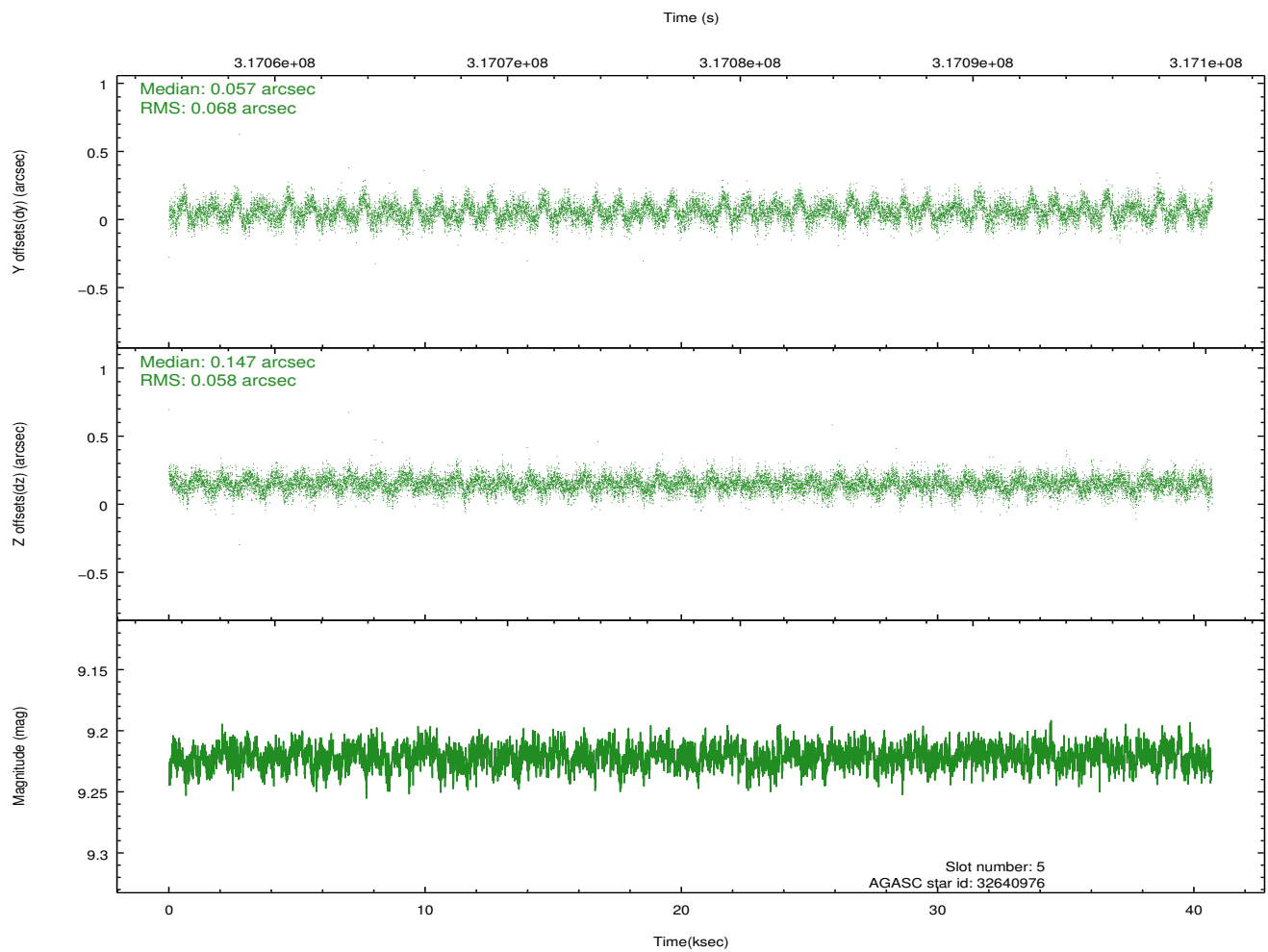
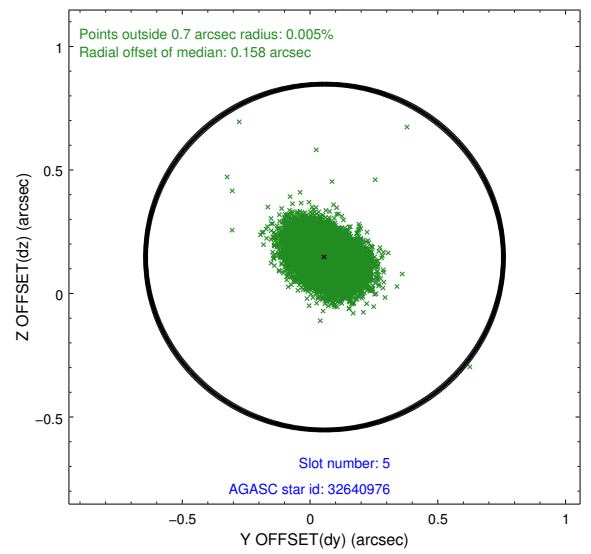
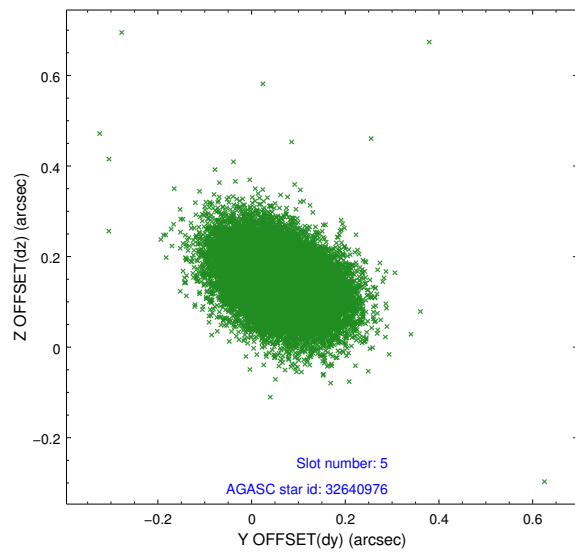
2.4.1 Slot 3



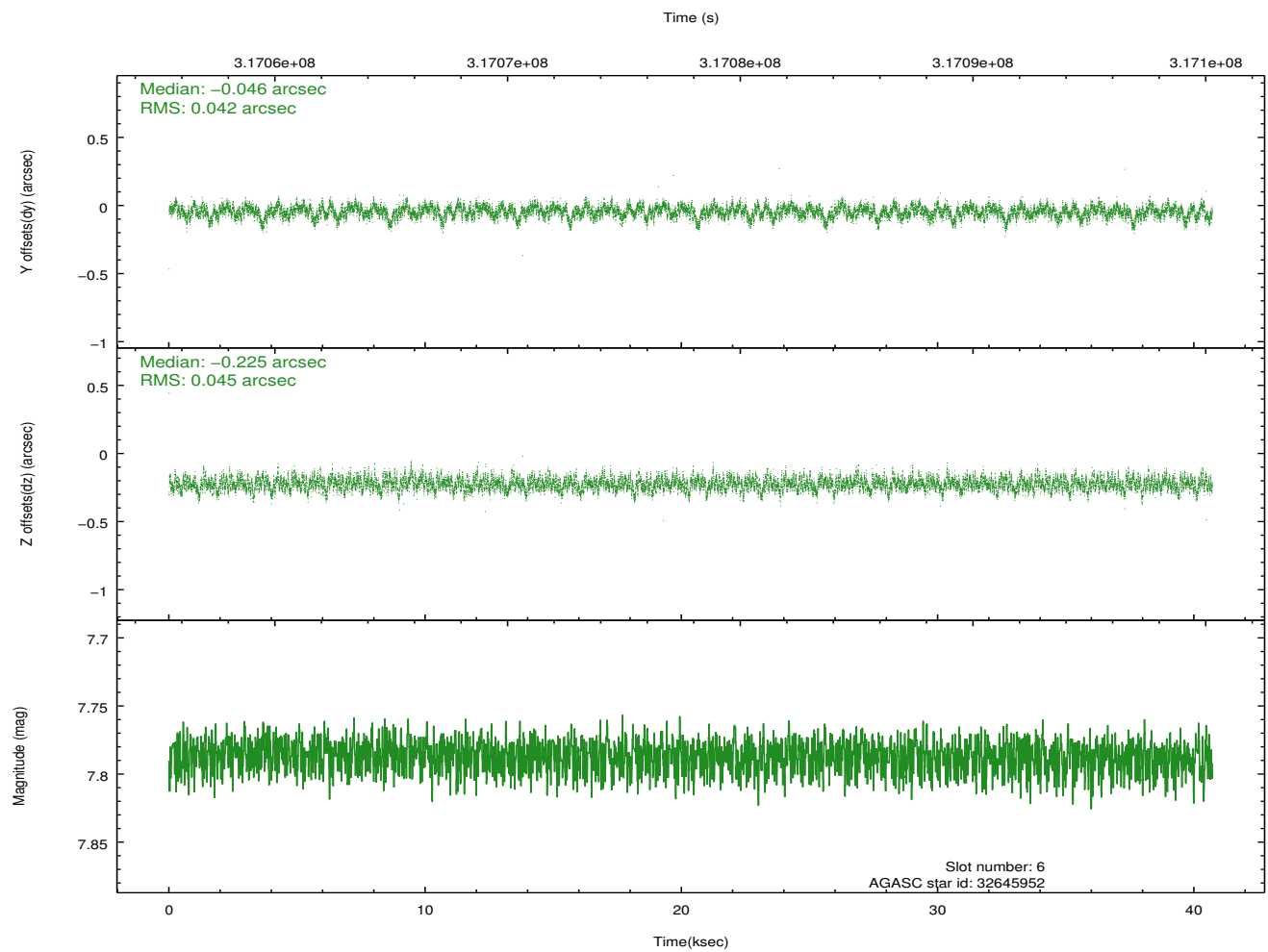
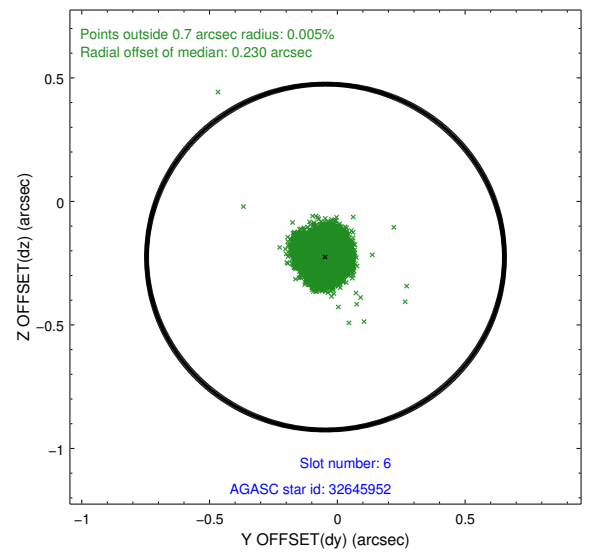
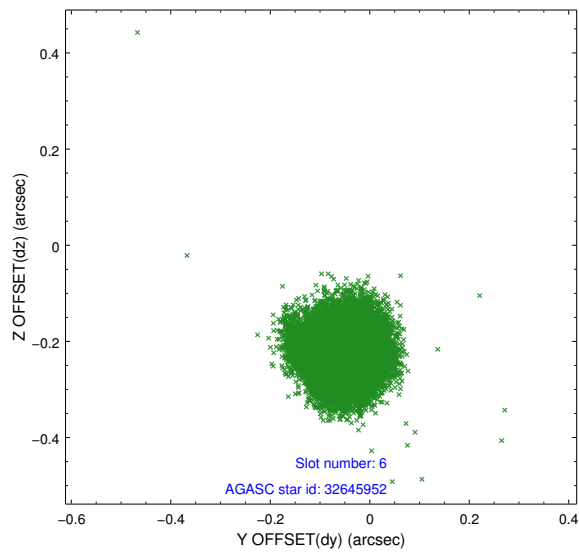
2.4.2 Slot 4



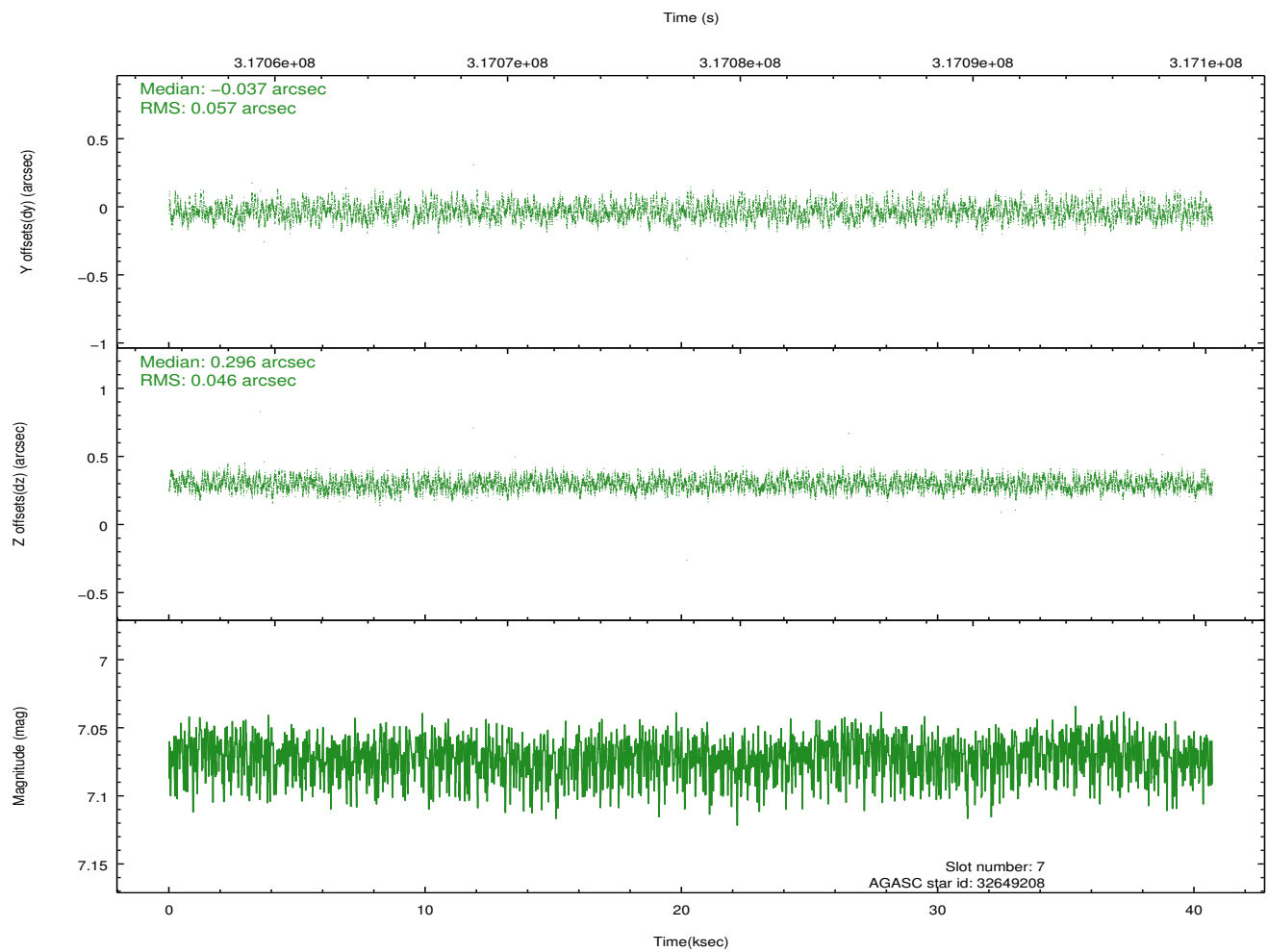
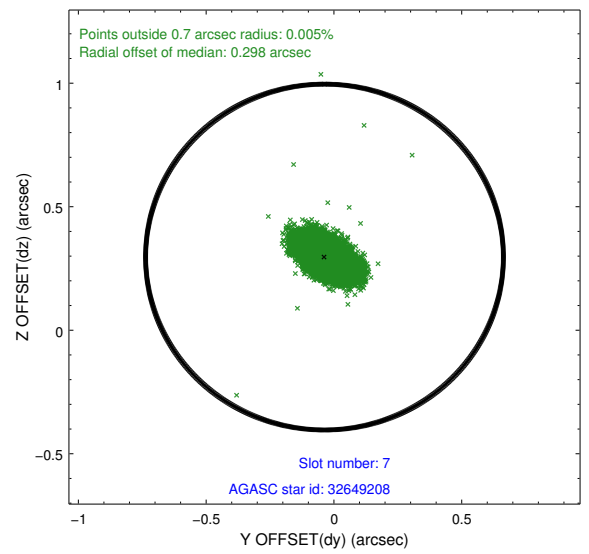
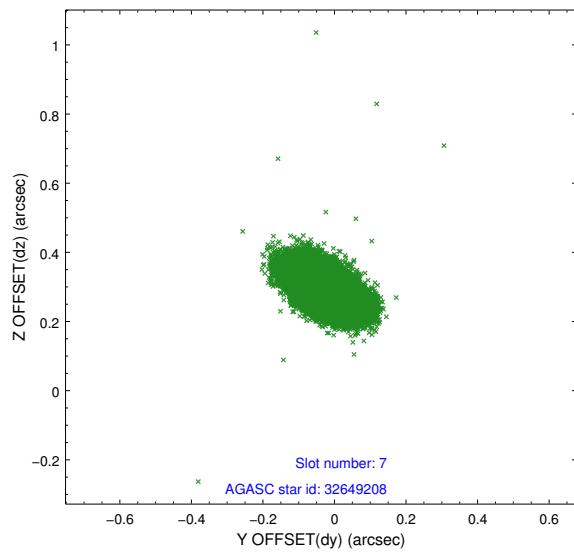
2.4.3 Slot 5



2.4.4 Slot 6

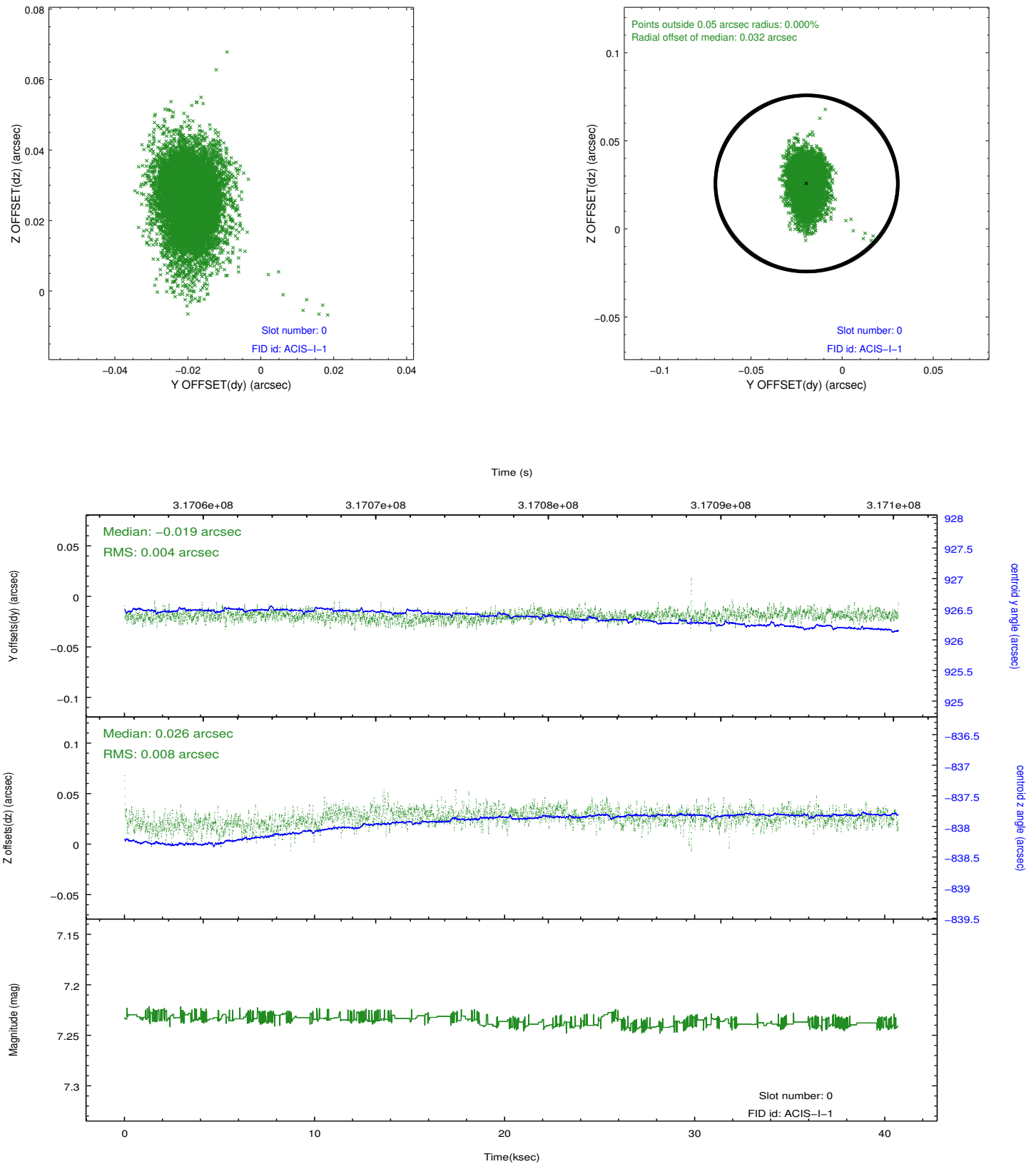


2.4.5 Slot 7

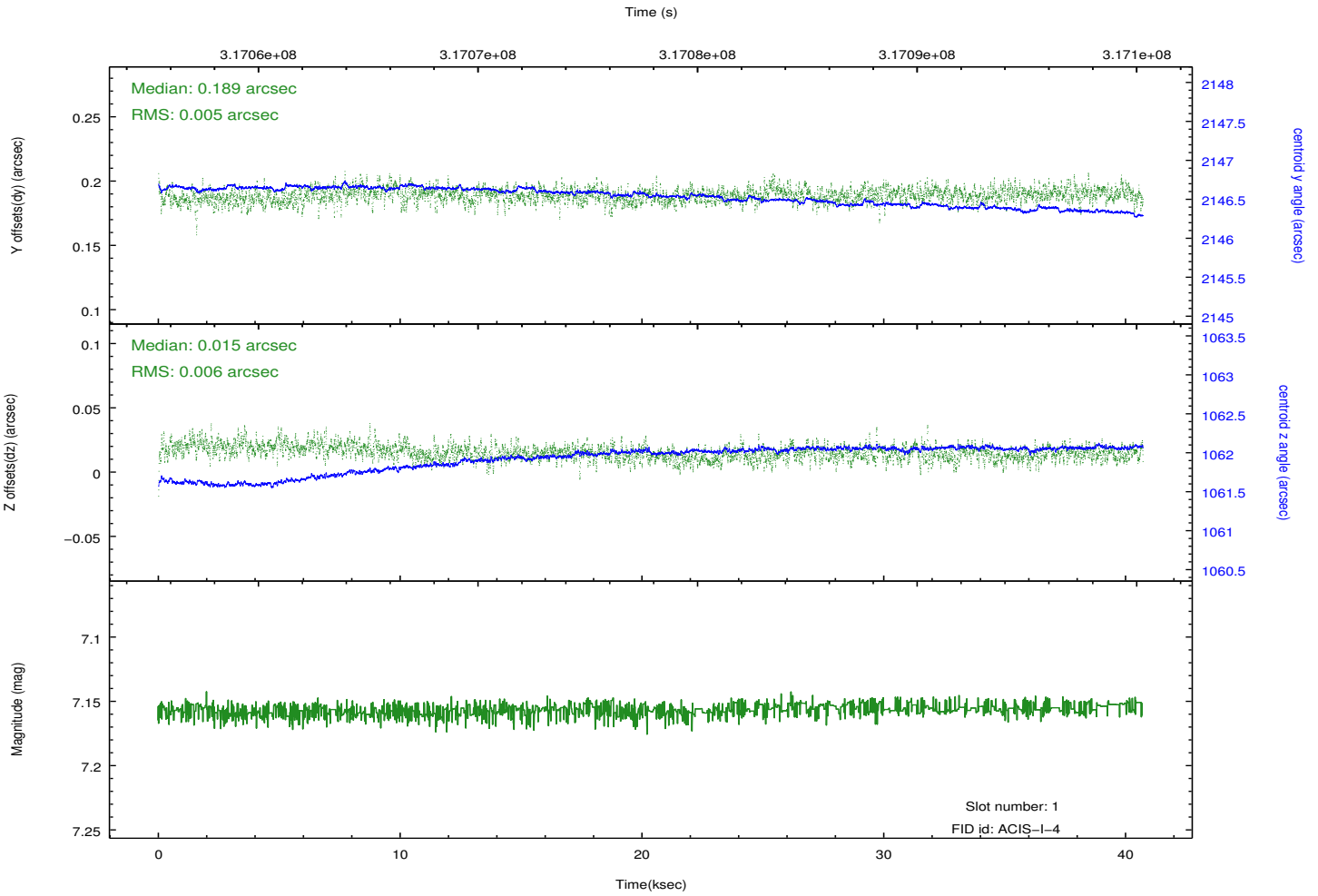
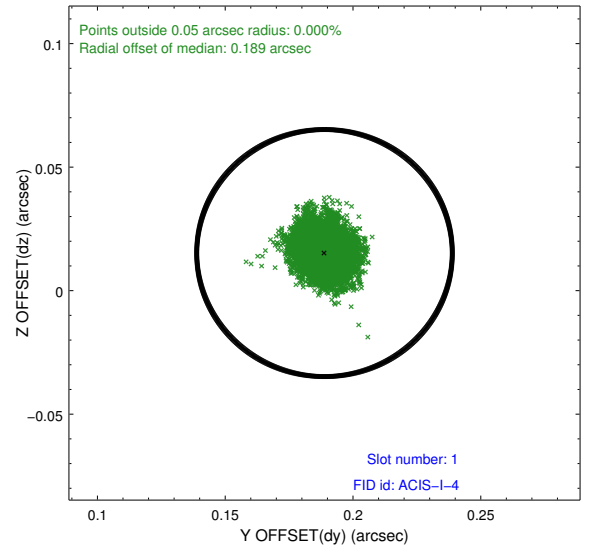
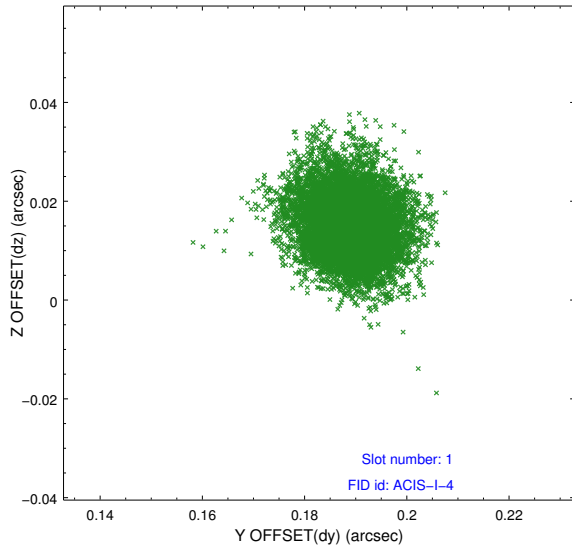


2.5 FID Slots

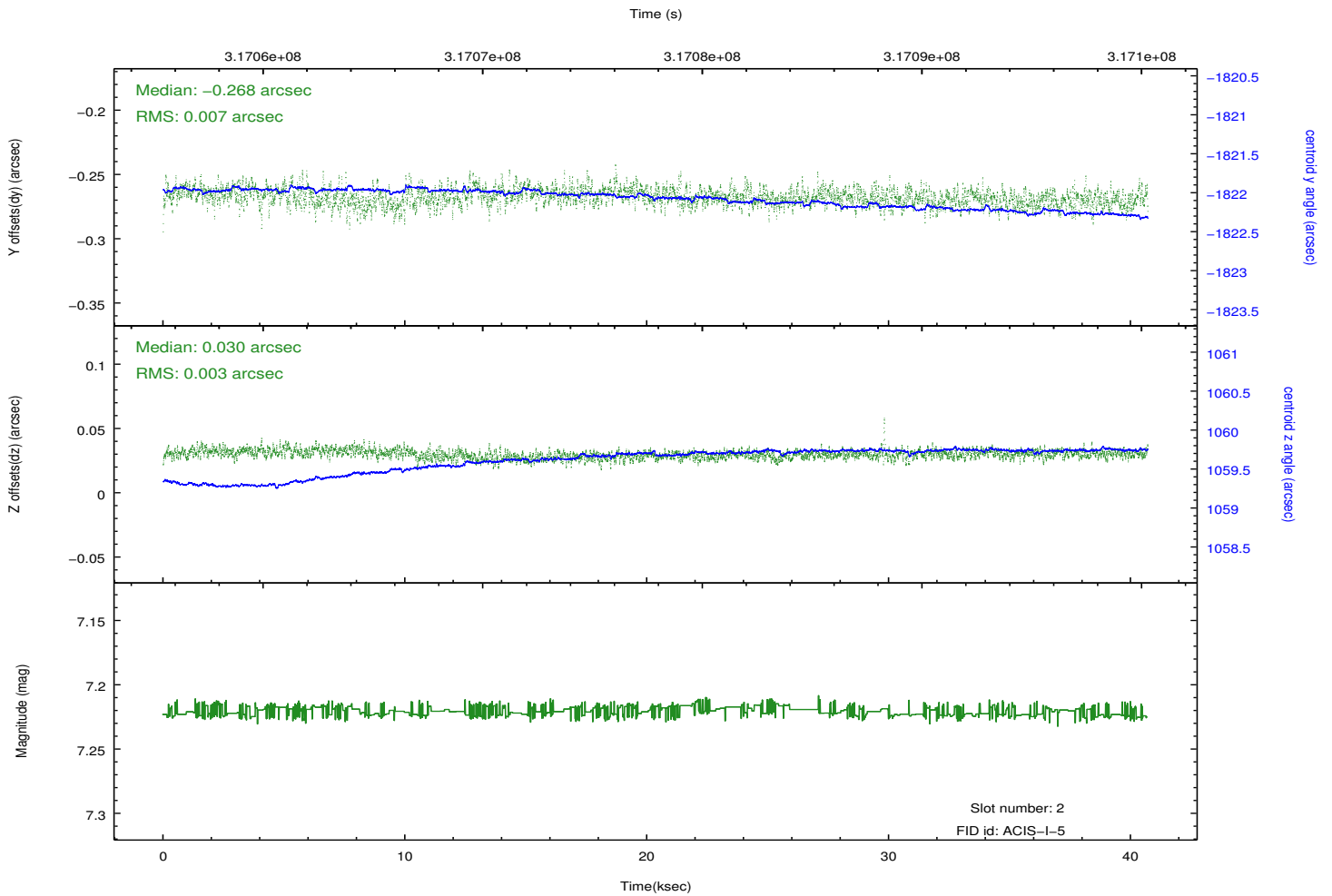
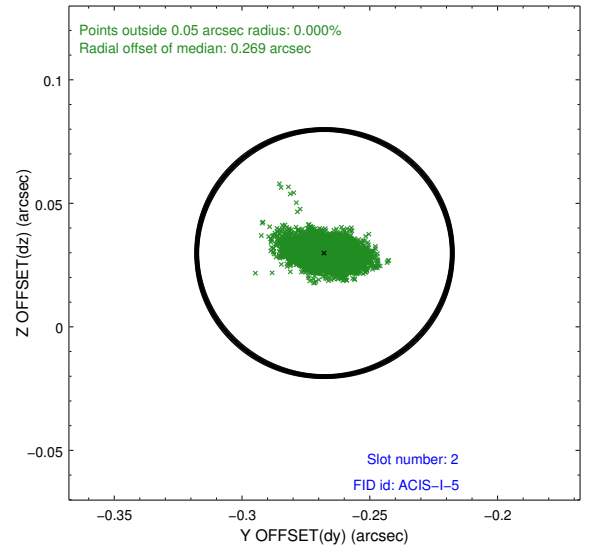
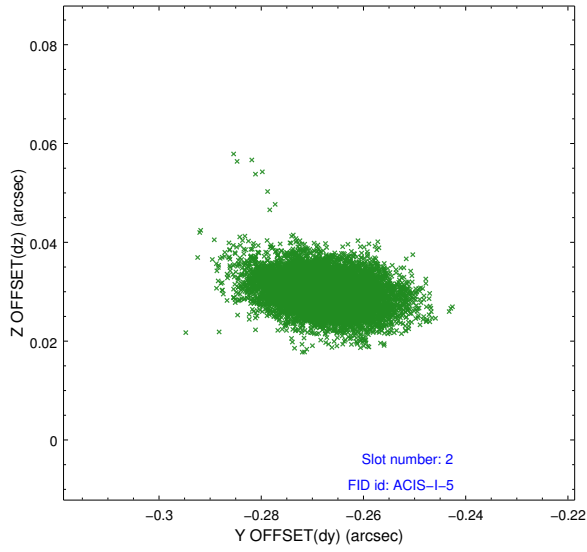
2.5.1 Slot 0



2.5.2 Slot 1



2.5.3 Slot 2



A Summary

A.1 Status

V&V Scientist	Jen Lauer
V&V Date (YYYY-MM-DD)	2012.05.10
V&V Edition	1
V&V Disposition and Status	OK
V&V Charge Time	40.6934953

A.2 Comments