

V&V Reference Report

L2 ASCDS Version : 8.4.4

Observation 9701 - L2 Version 3
Chandra X-Ray Center

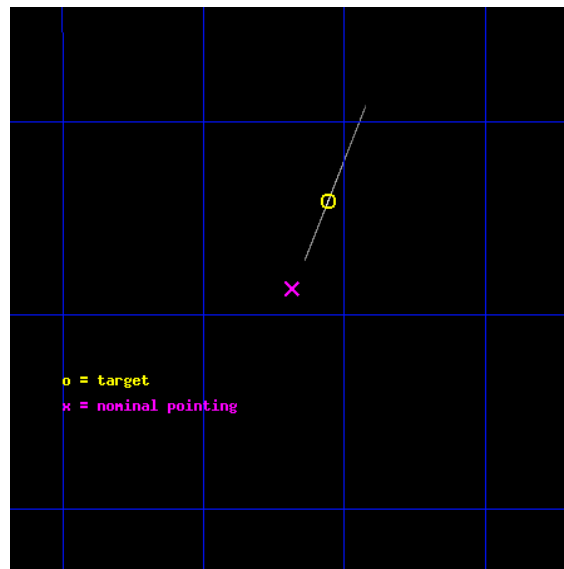
L2 Processing Date : May 21 2012

Contents

1	Front	2
2	OBI	3
2.1	OBI	3
2.1.1	Images	3
2.1.2	Bias	3
2.1.3	Parameters	4
2.1.4	Events	4
2.2	Compared Parameters	5
2.3	Aspect	6
2.4	Star Slots	9
2.4.1	Slot 3	9
2.4.2	Slot 4	10
2.4.3	Slot 5	11
2.4.4	Slot 6	12
2.4.5	Slot 7	13
2.5	FID Slots	14
2.5.1	Slot 0	14
2.5.2	Slot 1	15
2.5.3	Slot 2	16
A	Summary	17
A.1	Status	17
A.2	Comments	17

1 Front

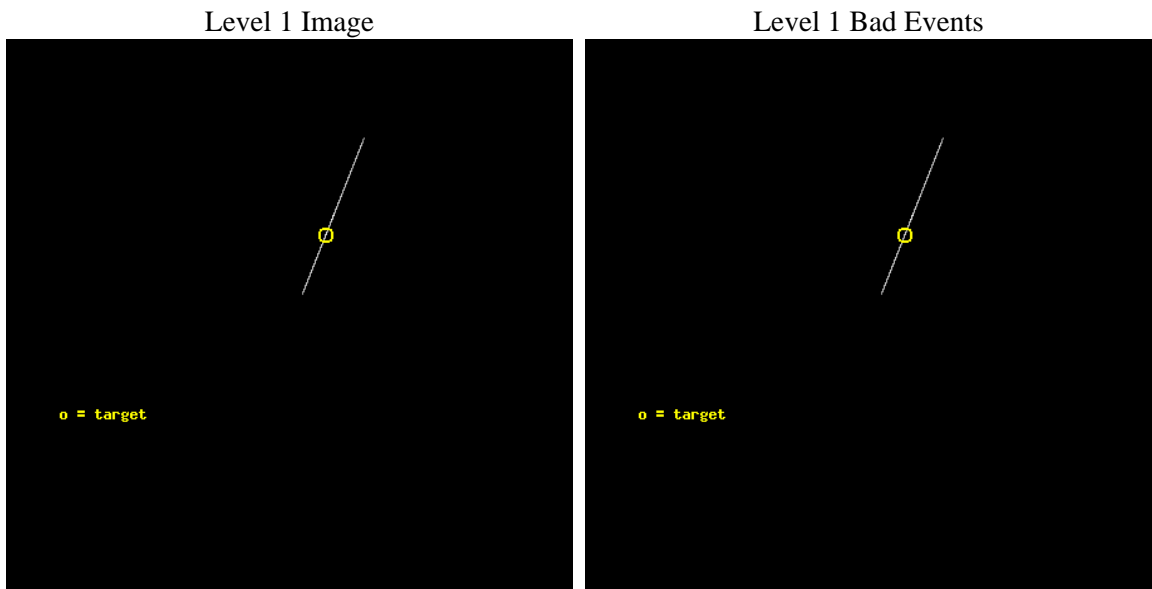
seq_num	590479	Sequence number
obs_id	9701	Observation id
title	AO9 Observations of the Standard Candles Cas A and G21.5-09.	Propo
observer	Dr. CXC Calibration	Principal investigator
object	G21.5-09[S2,-120,5.15,0,10.0]	Source name
ra_targ	278.389583	Observer's specified target RA [deg]
dec_targ	-10.568528	Observer's specified target Dec [deg]
ra_nom	278.4216554209	Nominal RA [deg]
dec_nom	-10.643918122712	Nominal Dec [deg]
roll_nom	111.74564499371	Nominal Roll [deg]
revision	3	Processing version of data
ontime	10136.75	Sum of GTIs [s]
livetime	10097.153320312	Livetime [s]
ontime6	10136.75	Sum of GTIs [s]
l2events	37299	Number of level 2 events



2 OBI

2.1 OBI

2.1.1 Images



2.1.2 Bias

Chip 6



2.1.3 Parameters

obi_num	0	Obi number	sched_exp_time	10000.000000	[s] Scheduled observation exposure time
ascdsver	8.4.4	Processing system revision	ontime	10136.75	Sum of GTIs [s]
caldbver	4.4.9	 	ontime6	10136.75	Sum of GTIs [s]
date	2012-05-21T14:19:58	Date and time of file creation	l1events	308007	Number of level 1 events
revision	3	Processing version of data			

2.1.4 Events

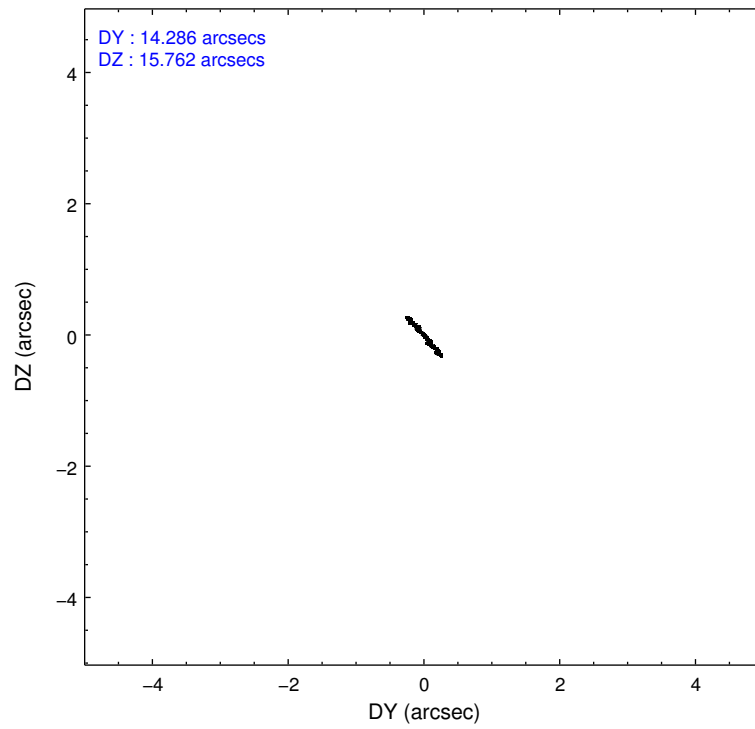
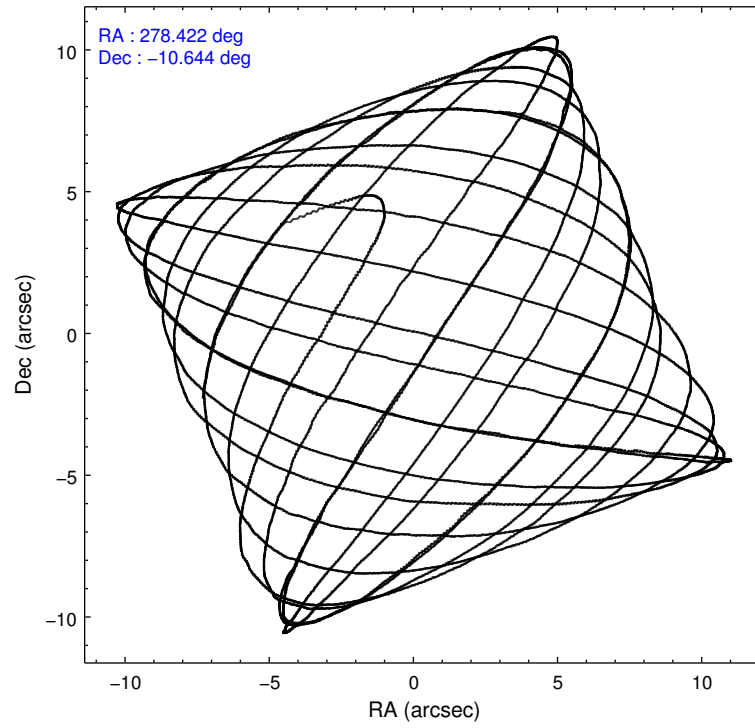
	ccd 6
level 1 events	308007
rejected events	268035
rejected %	87%

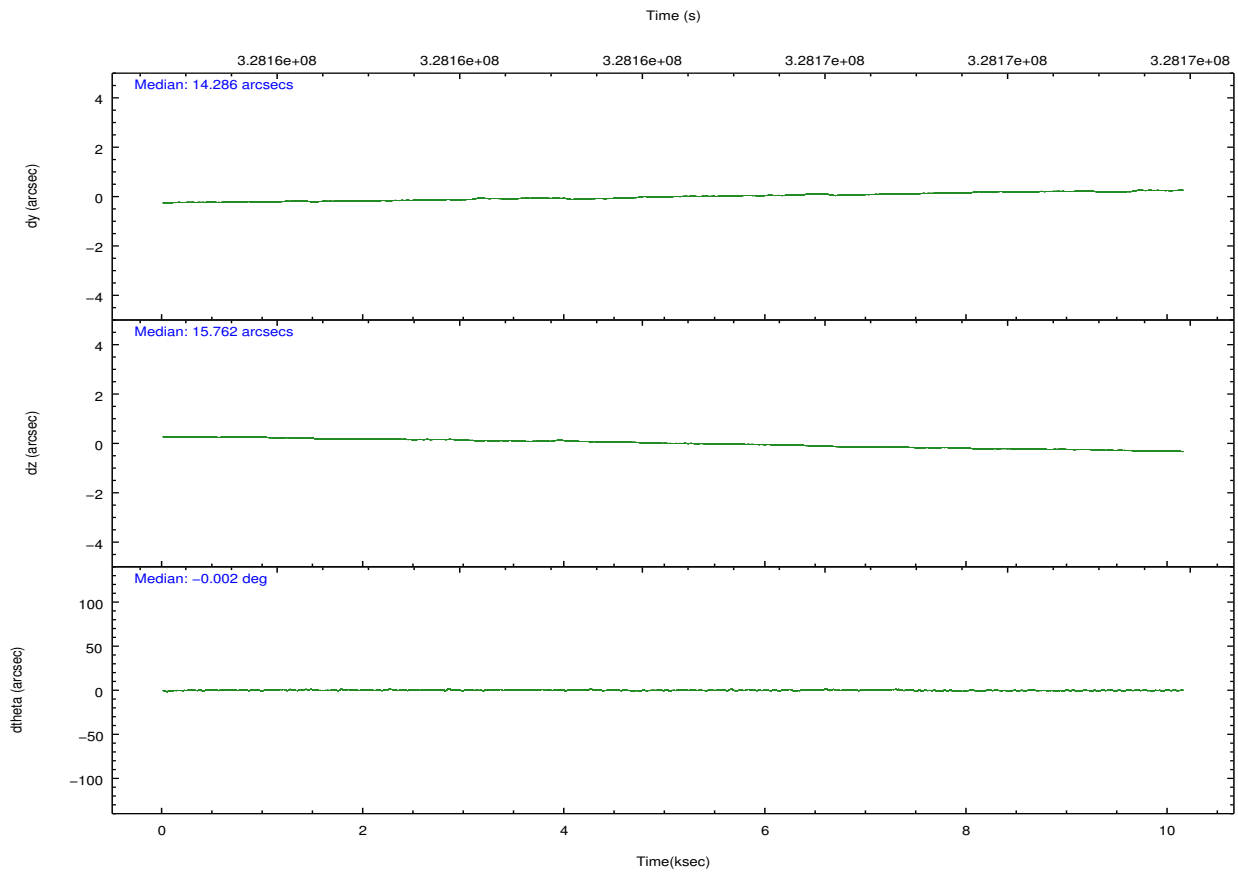
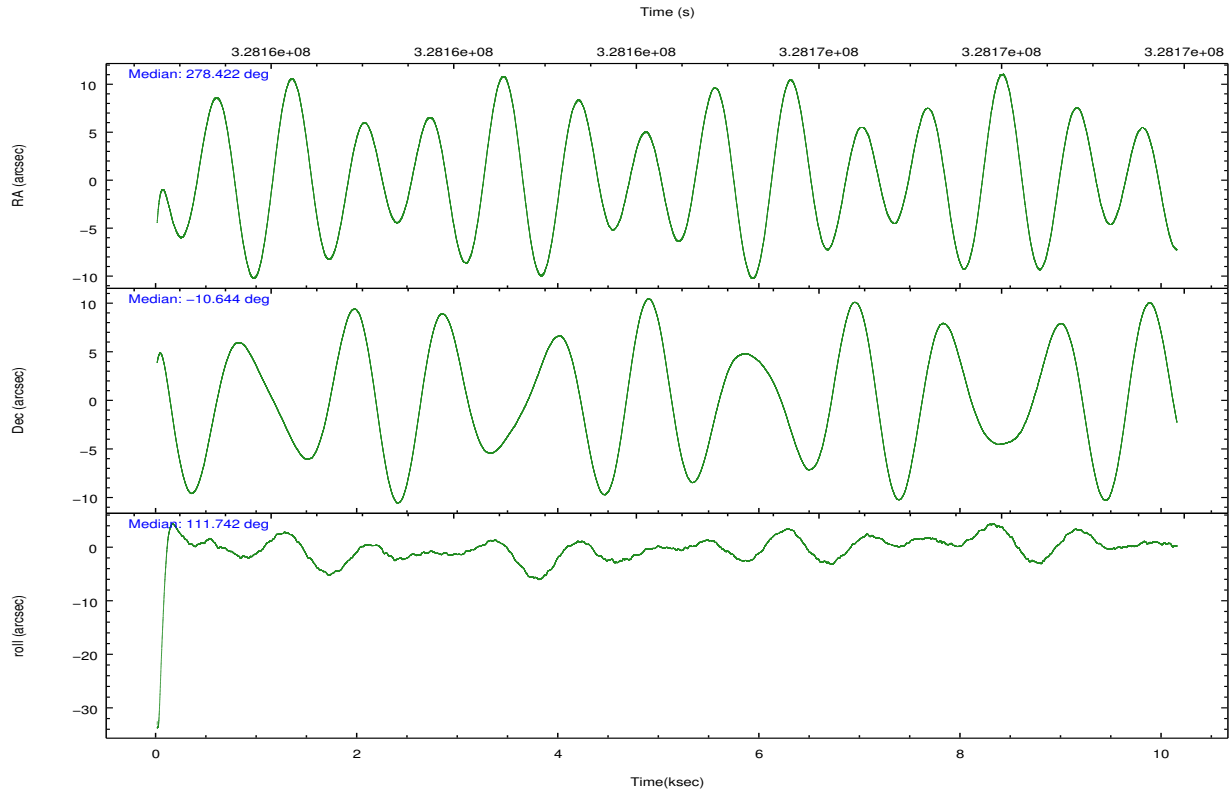
	ccd 6
grade 0 events	1827
	0%
grade 1 events	66
	0%
grade 2 events	29847
	9%
grade 3 events	2252
	0%
grade 4 events	2164
	0%
grade 5 events	3531
	1%
grade 6 events	5692
	1%
grade 7 events	262628
	85%

2.2 Compared Parameters

Parameter	Planned	Actual	Parameter	Planned	Actual
Instrument	ACIS	ACIS	Obspar format version number	7	7
Detector	ACIS-6	ACIS-6	Obspar file type	PREDICTED	ACTUAL
Grating	NONE	NONE	Obspar update status	NONE	UPDATED
Data mode	CC33_FAINT	CC33_FAINT	Number of optional ACIS chips dropped	0	0
Observation mode	POINTING	POINTING	On-chip summing requested	N	N
[deg] Pointing RA	278.443770	278.4216554208985	Subarray requested	NONE	NONE
[deg] Pointing Dec	-10.660553	-10.64391812271168	Alternating exposures requested	N	N
[deg] Pointing Roll	111.593158	111.745644993711	[s] Primary exposure time	0.000000	0
[s] Window start time (MET)	318211265.184000	318211265.184000			
[s] Window stop time (MET)	328579265.184000	328579265.184000			
[mm] SIM focus pos	-0.684267	-0.6828225247311905			
[mm] SIM defocus	0	0.001444936568705701			
[mm] SIM translation stage pos	-198.132523	-198.1255314476265			
[mm] SIM translation stage offset	8	7.993008864618645			
[s] Observation start time (MET)	328159423.184000	328158268.46662			
Observation start date	2008-05-26T03:22:38	2008-05-26T03:04:28			
[s] Observation end time (MET)	328169423.184000	328170395.24221			
Observation end date	2008-05-26T06:09:18	2008-05-26T06:26:35			
Read mode	CONTINUOUS	CONTINUOUS			

2.3 Aspect



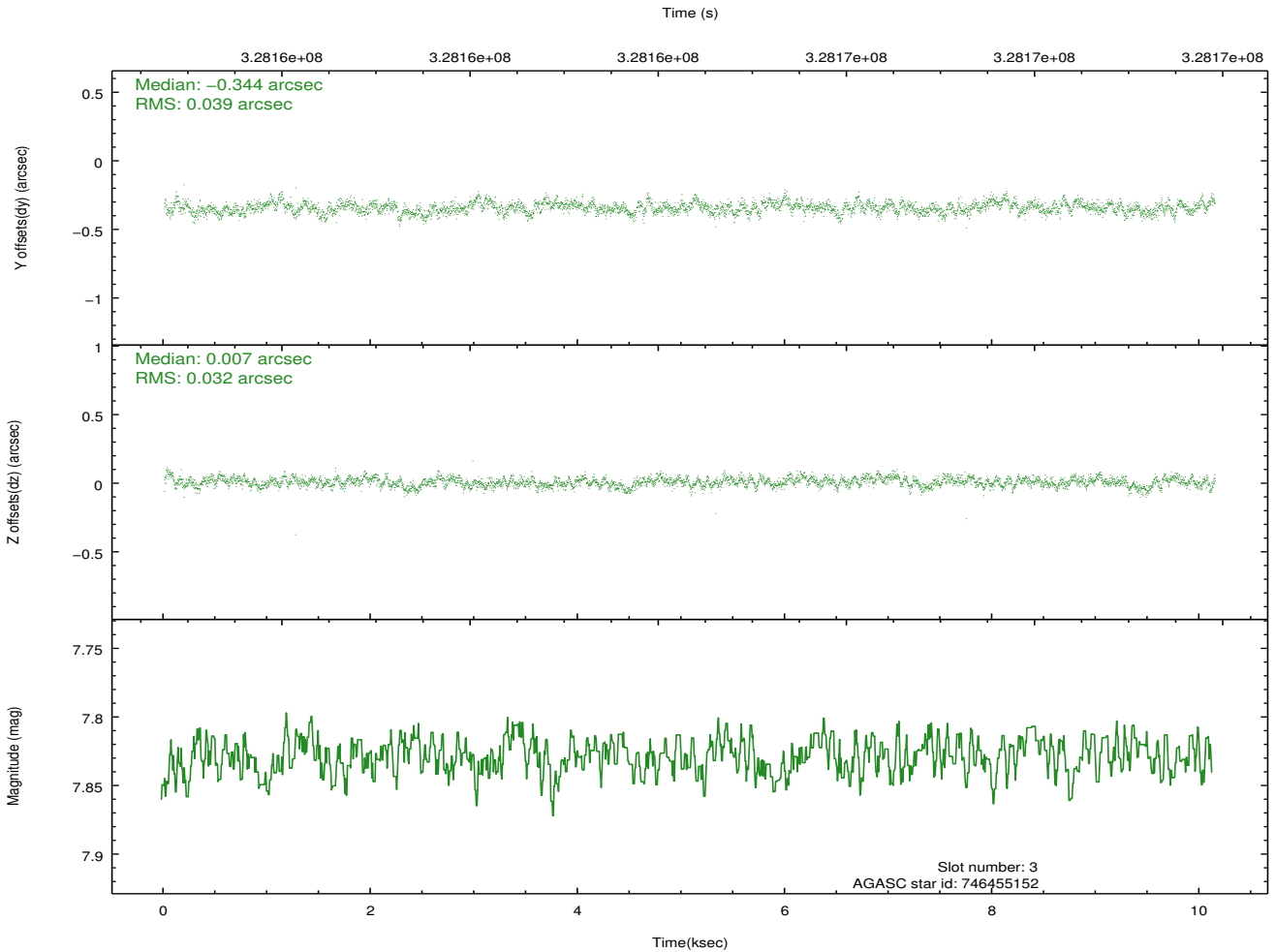
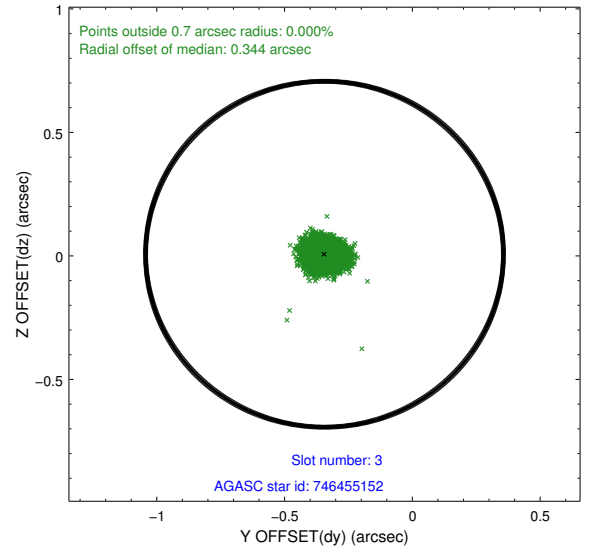
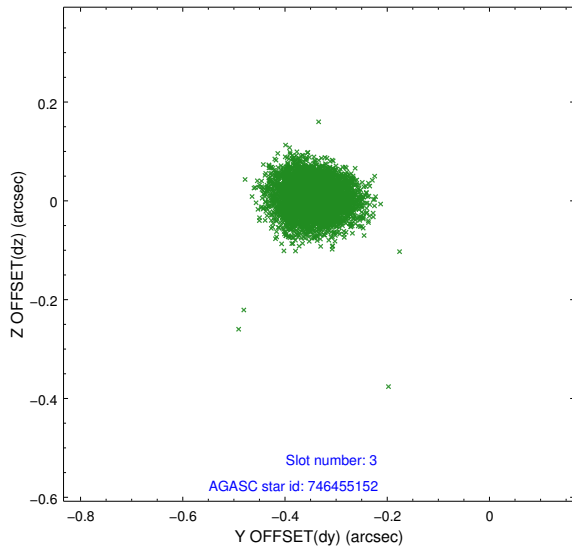


Slot Statistics

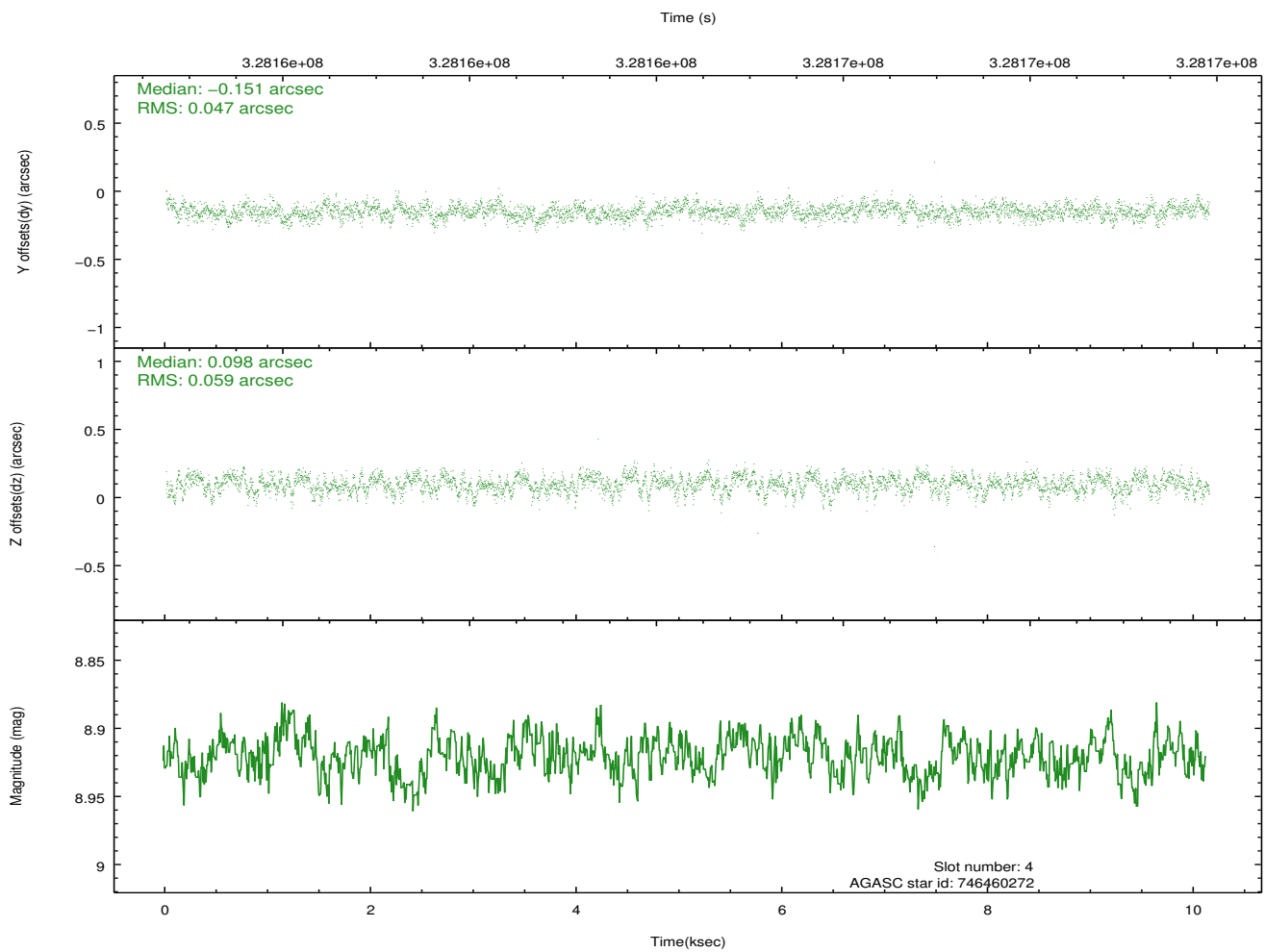
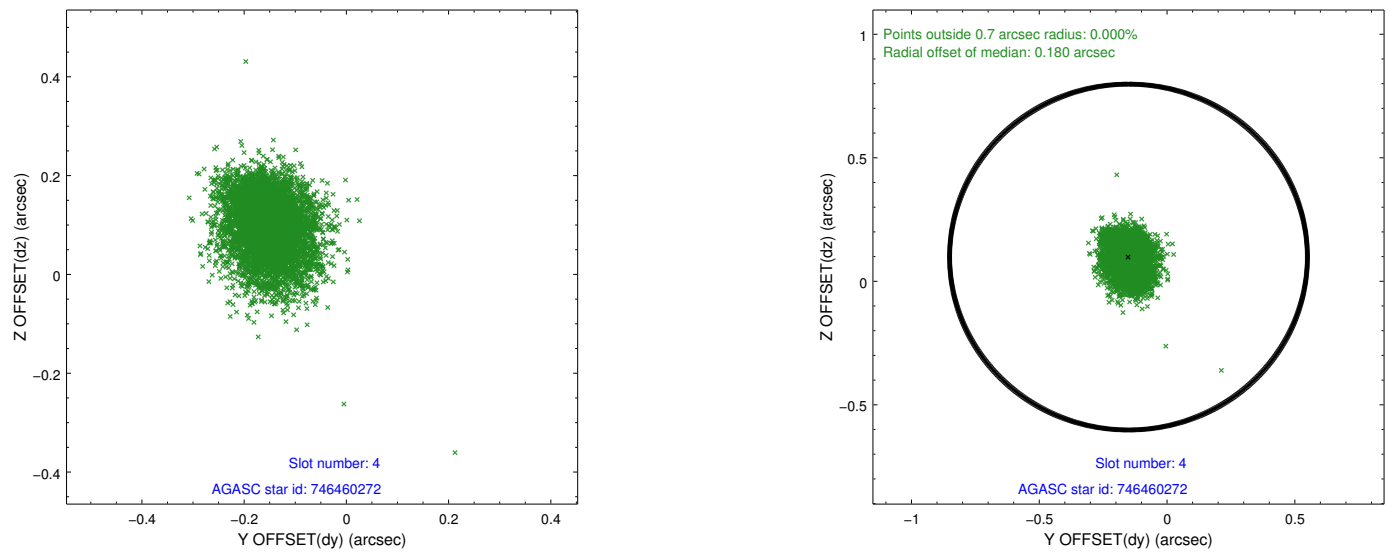
slot	status	id	mag	n_pts	med_dy	med_dz	dr1	dr2	ra	dec	mean_y	mean_z
0	FID	ACIS-S-2	6.89	2474	0.034	0.122	0.009	0.013	0.000000	0.000000	-767.74	-1572.32
1	FID	ACIS-S-4	6.98	2474	0.095	-0.048	0.007	0.011	0.000000	0.000000	2145.43	335.43
2	FID	ACIS-S-5	6.97	2474	-0.161	-0.064	0.009	0.016	0.000000	0.000000	-1820.04	329.82
3	GUIDE	746455152	7.83	4947	-0.344	0.007	0.053	0.087	278.447893	-9.976732	2283.73	-919.27
4	GUIDE	746460272	8.92	4947	-0.151	0.098	0.080	0.129	278.847488	-10.152127	1175.40	-2003.37
5	GUIDE	746462392	8.54	4947	0.190	-0.016	0.082	0.131	279.038421	-10.890715	-1546.98	-1649.77
6	GUIDE	746462456	8.38	4947	0.080	-0.116	0.060	0.099	278.652171	-10.530173	163.82	-858.57
7	GUIDE	746462680	9.01	4945	0.226	0.042	0.088	0.146	278.660755	-10.782756	-691.02	-551.52

2.4 Star Slots

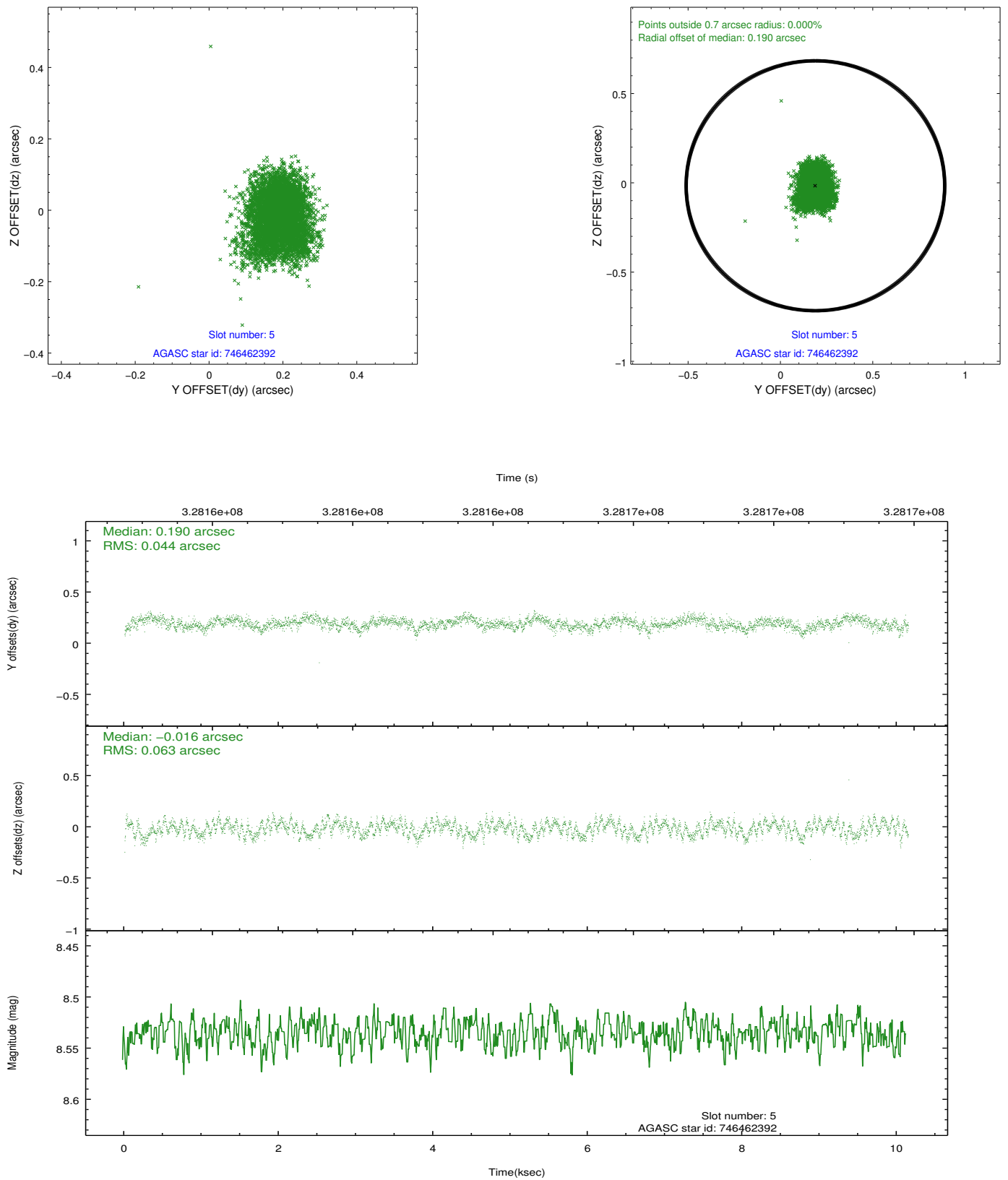
2.4.1 Slot 3



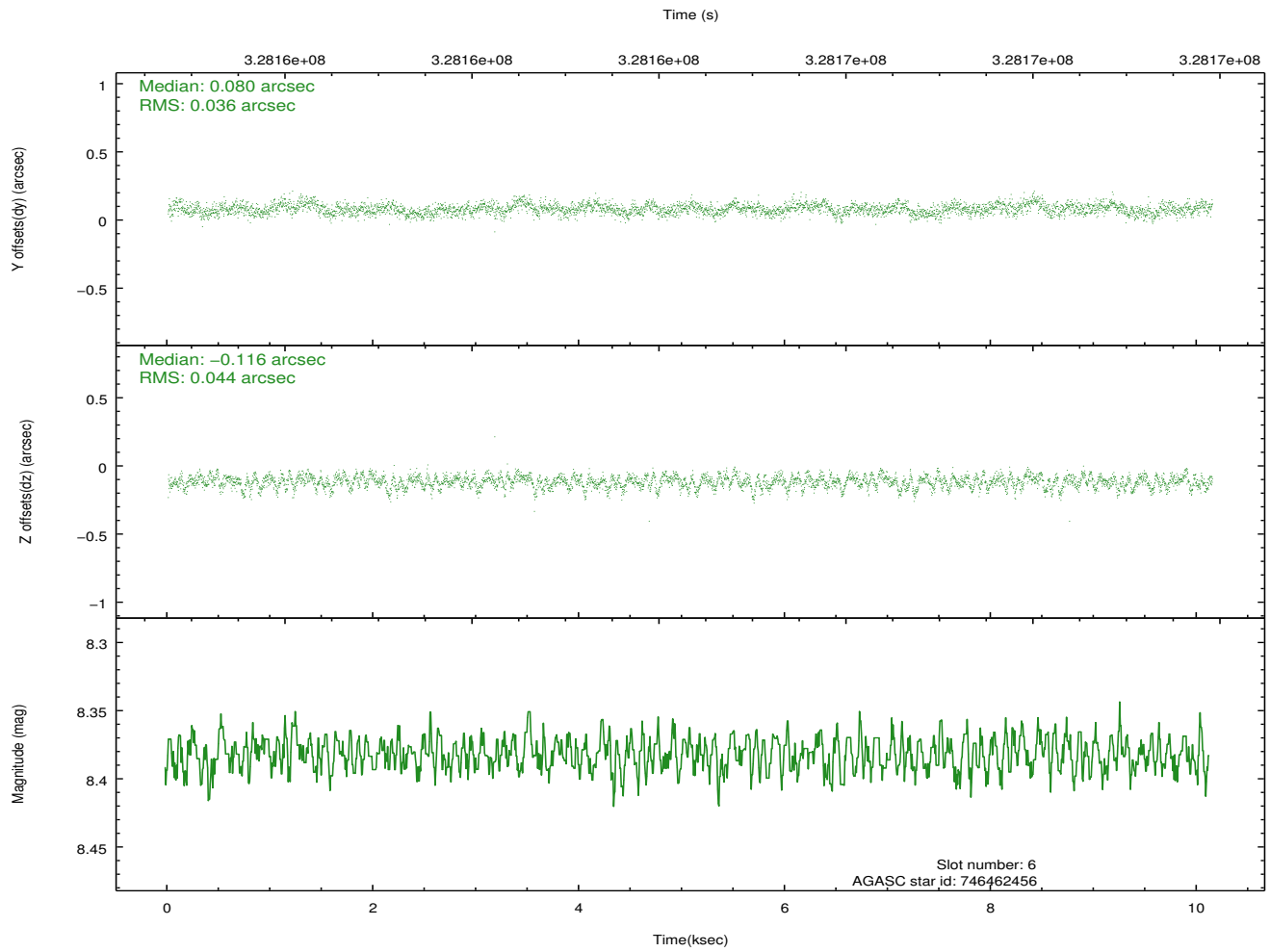
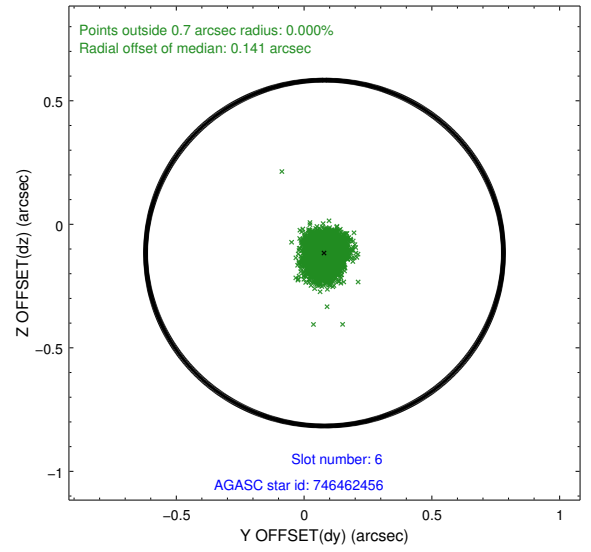
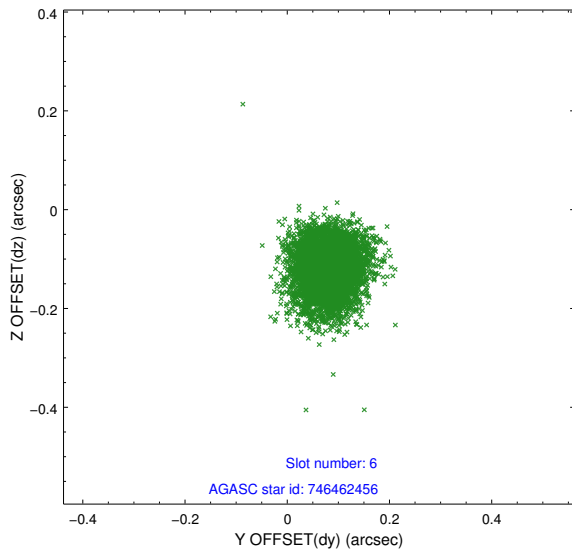
2.4.2 Slot 4



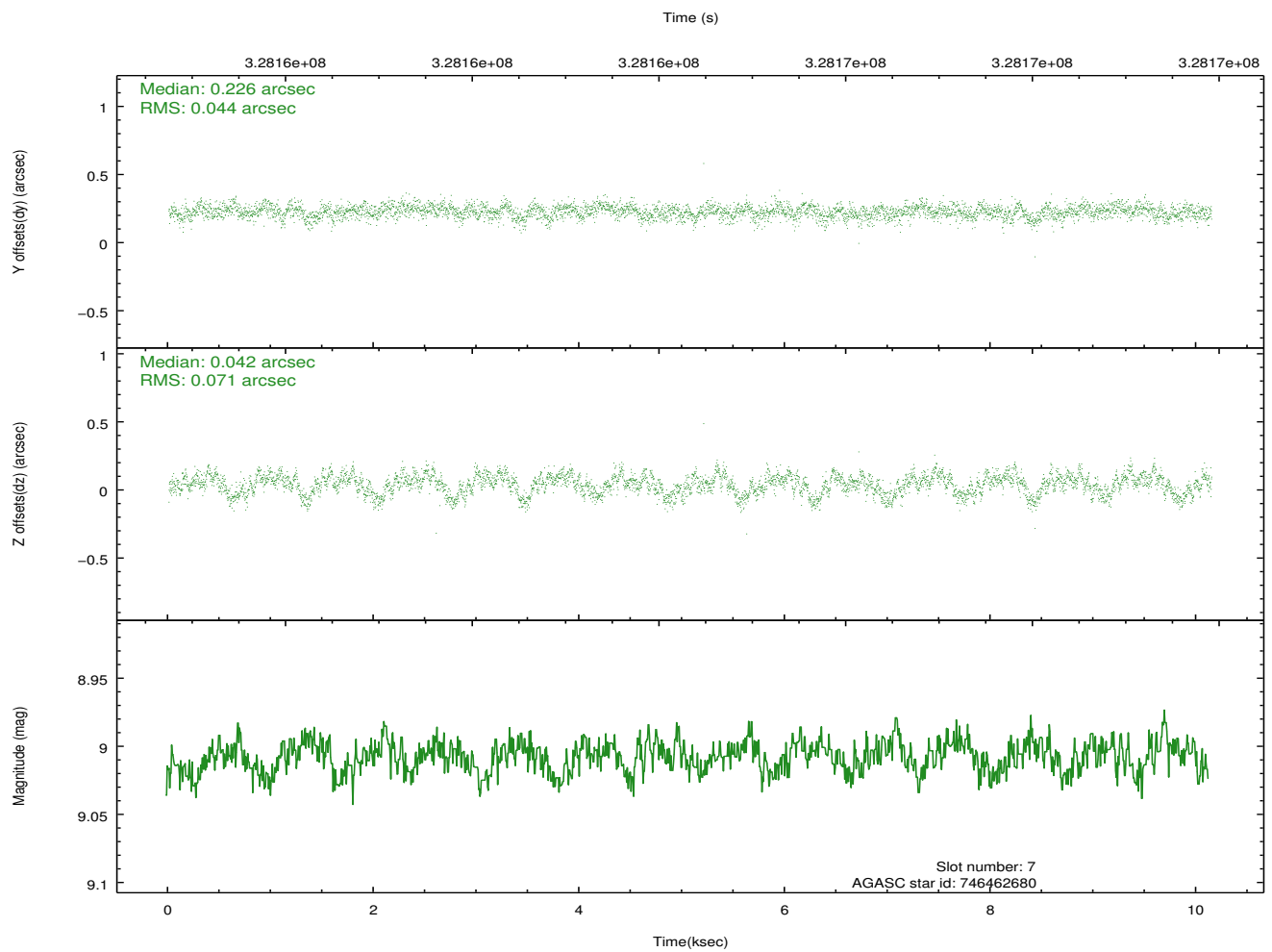
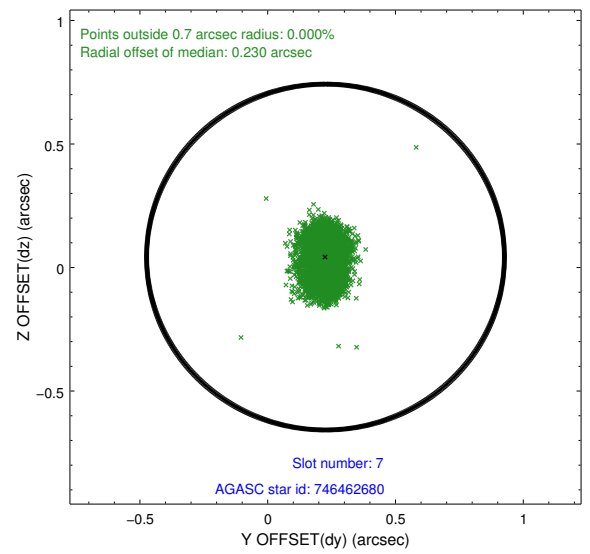
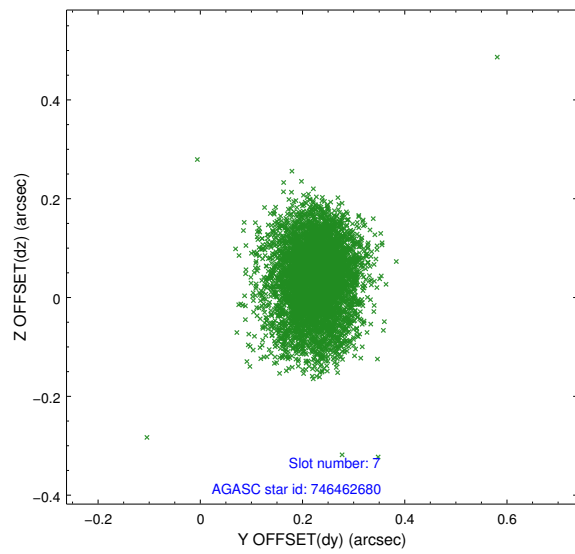
2.4.3 Slot 5



2.4.4 Slot 6

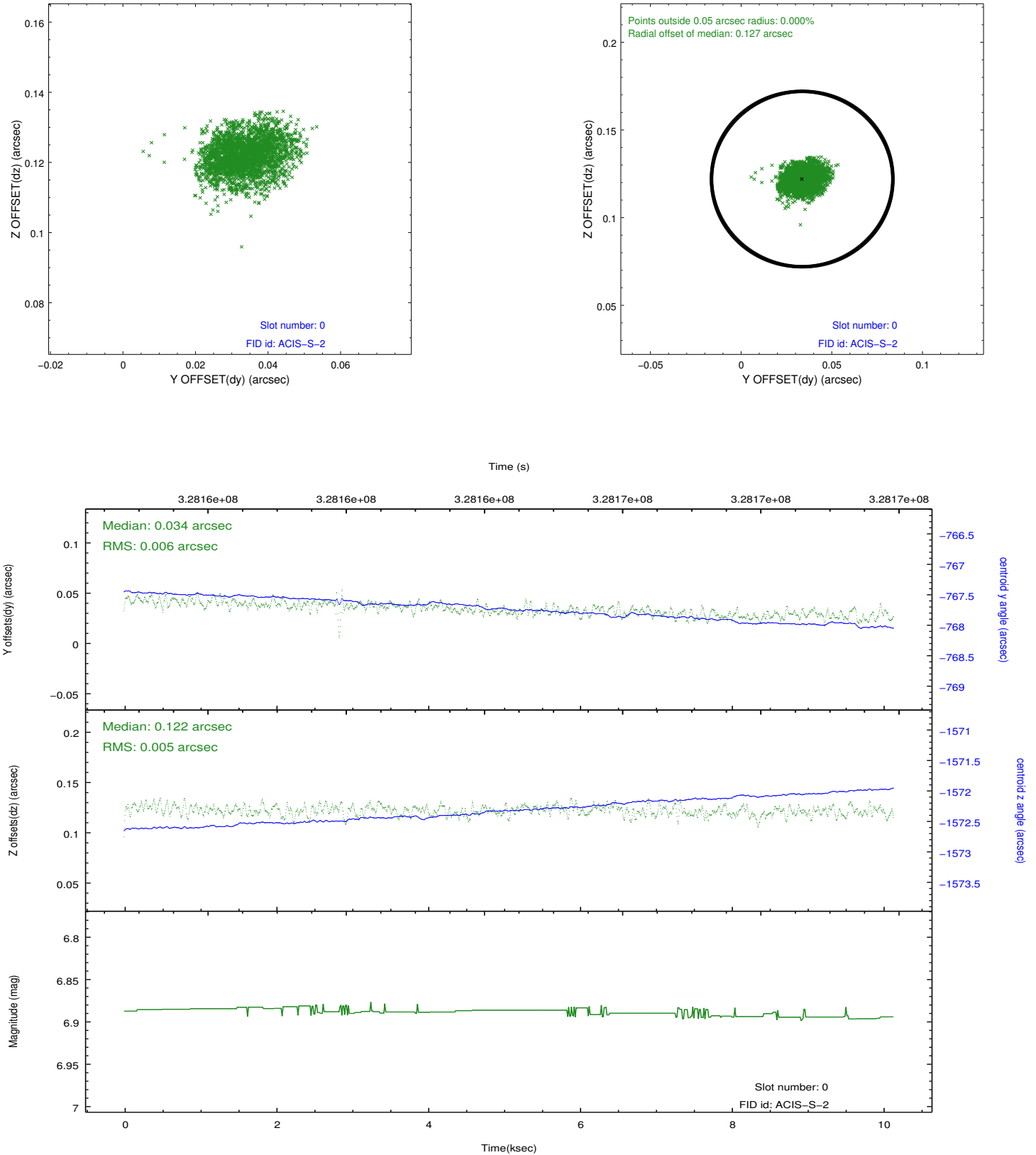


2.4.5 Slot 7

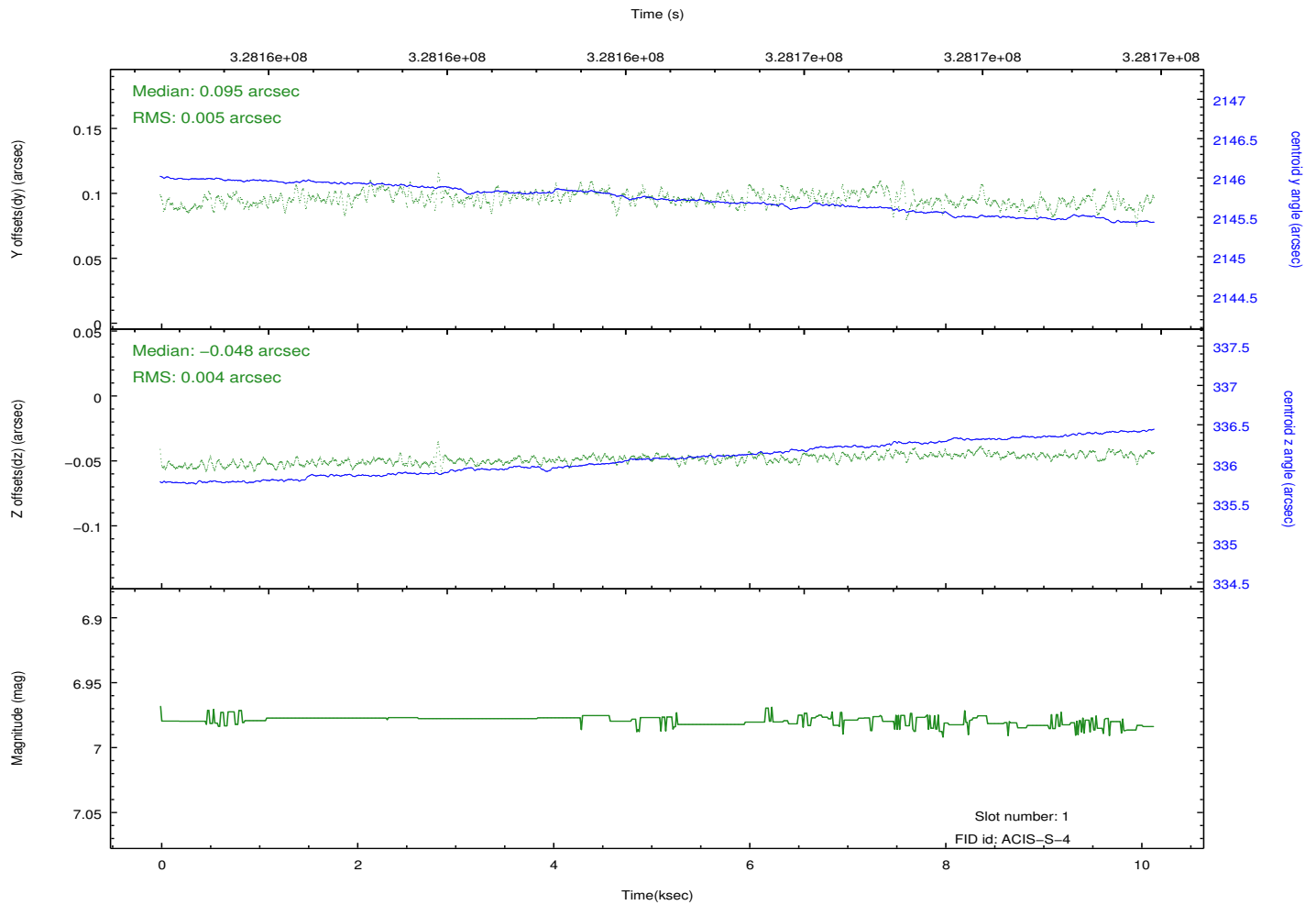
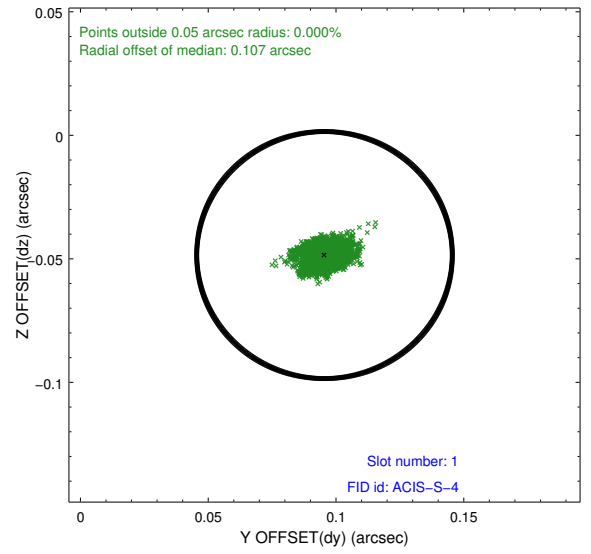
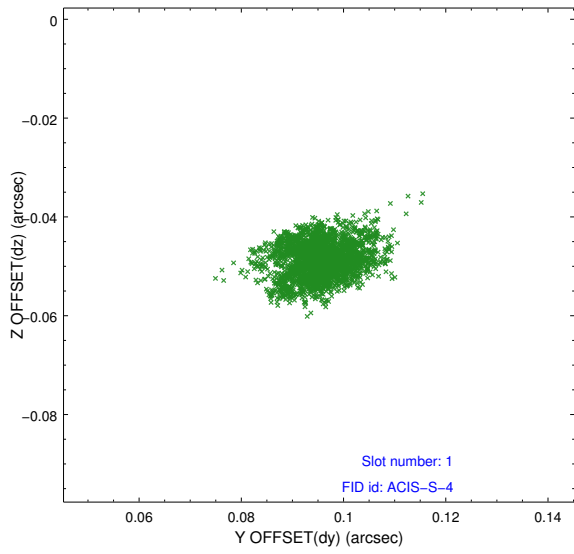


2.5 FID Slots

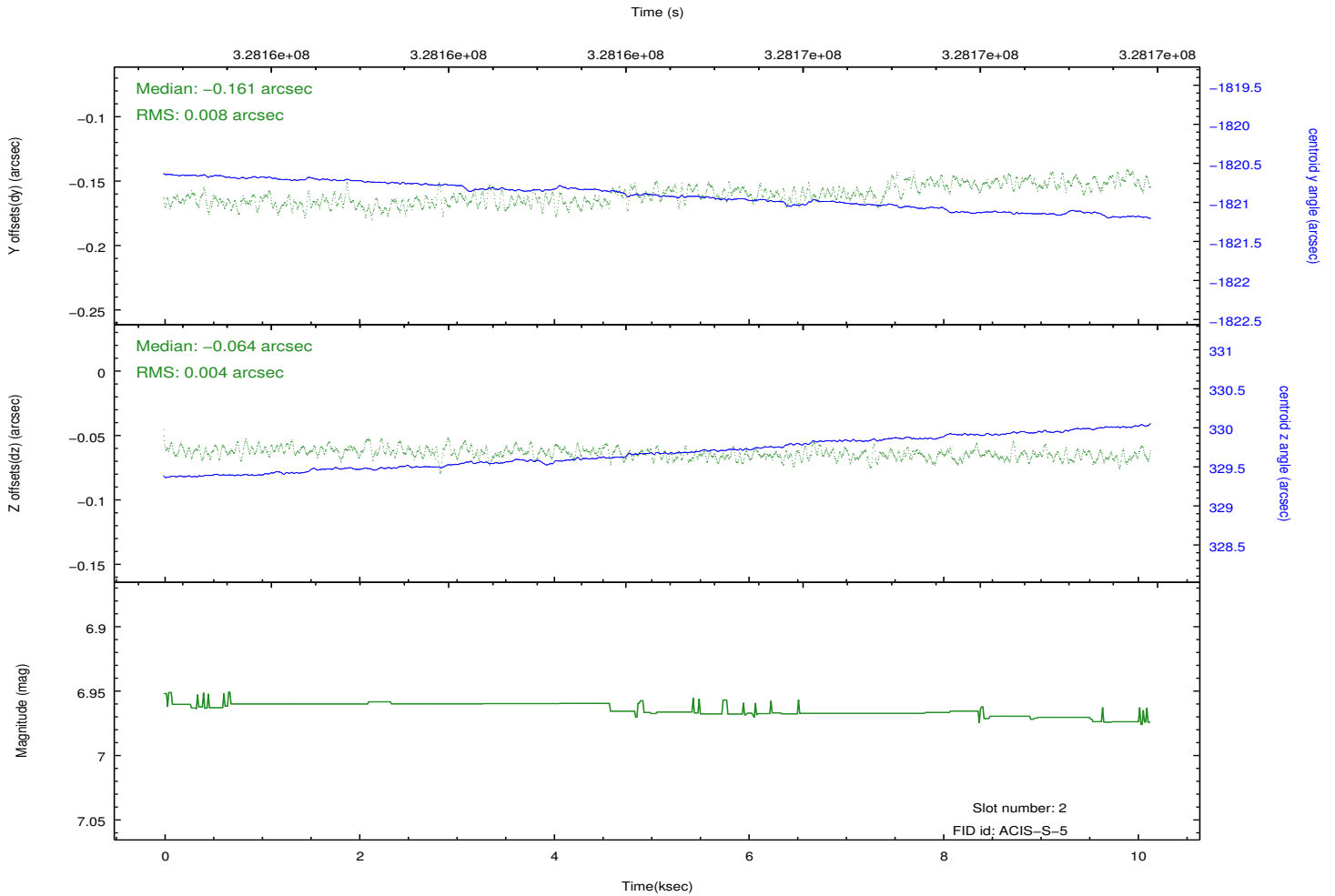
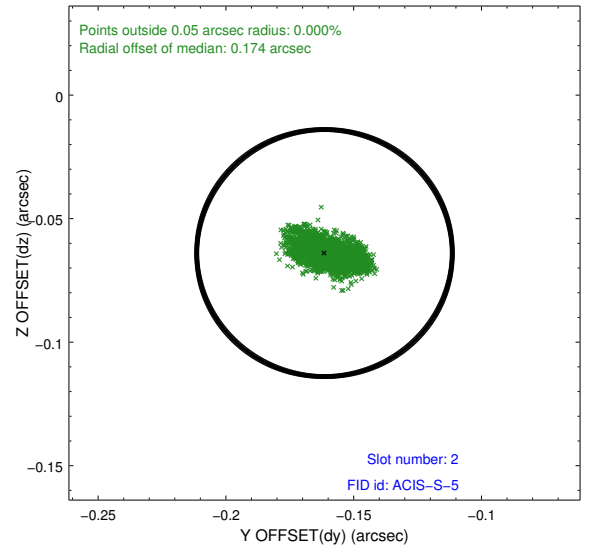
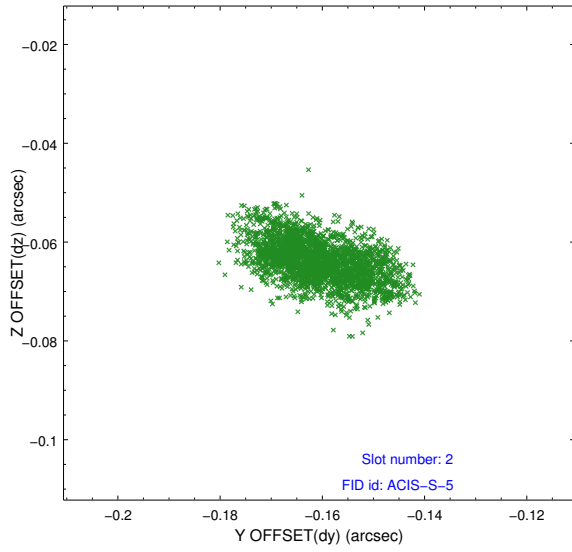
2.5.1 Slot 0



2.5.2 Slot 1



2.5.3 Slot 2



A Summary

A.1 Status

V&V Scientist	Joy Nichols
V&V Date (YYYY-MM-DD)	2012.05.22
V&V Edition	1
V&V Disposition and Status	OK
V&V Charge Time	10.13675

A.2 Comments

Target is off-axis. All flight grades except 255 were telemetered.