

V&V Reference Report

L2 ASCDS Version : 8.4.5

Observation 10332 - L2 Version 2
Chandra X-Ray Center

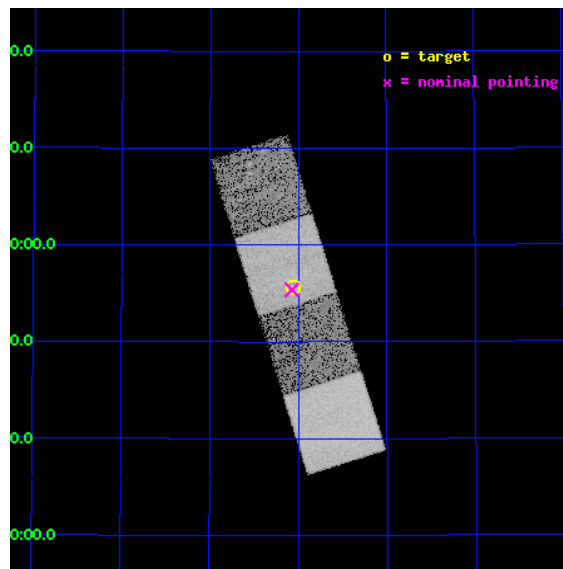
L2 Processing Date : Jun 10 2012

Contents

1	Front	2
2	OBI	3
2.1	OBI	3
2.1.1	Images	3
2.1.2	Bias	3
2.1.3	Parameters	4
2.1.4	Events	4
2.2	Compared Parameters	5
2.3	Aspect	6
2.4	Star Slots	9
2.4.1	Slot 3	9
2.4.2	Slot 4	10
2.4.3	Slot 5	11
2.4.4	Slot 6	12
2.4.5	Slot 7	13
2.5	FID Slots	14
2.5.1	Slot 0	14
2.5.2	Slot 1	15
2.5.3	Slot 2	16
A	Summary	17
A.1	Status	17
A.2	Comments	17

1 Front

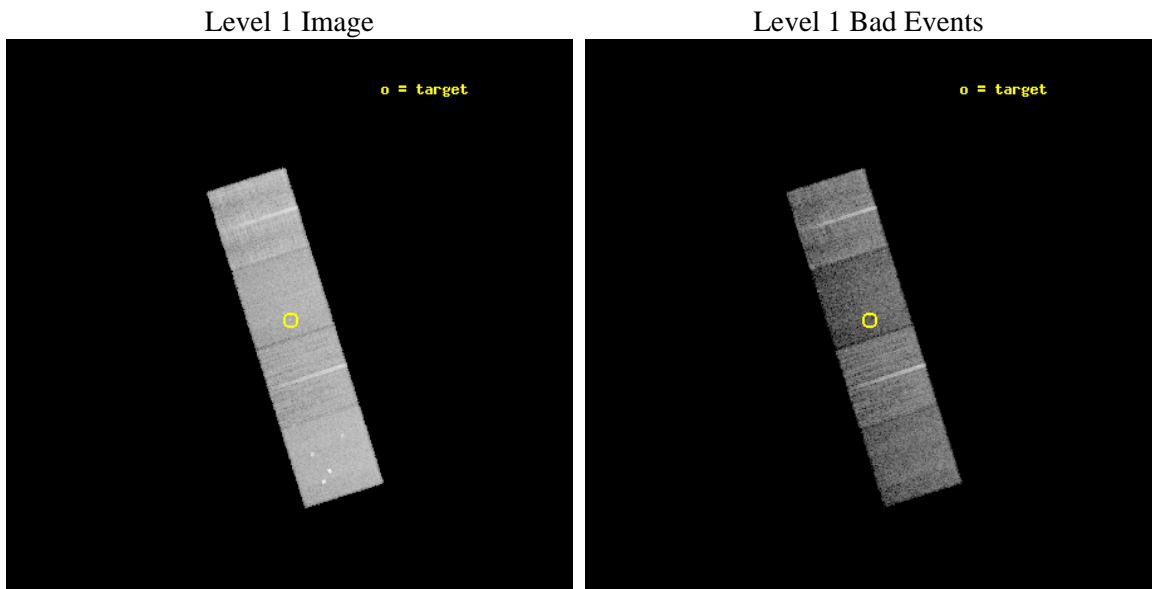
seq_num	701875	Sequence number
obs_id	10332	Observation id
title	Luminous Compton-thick QSOs at z~1	Proposal title
observer	Dr. Roberto Gilli	Principal investigator
object	SDSS J145503.94+515539.9	Source name
dtcycle	0	
cycle	P	events from which exps? Prim/Second/Both
ra_targ	223.76625	Observer's specified target RA [deg]
dec_targ	51.92775	Observer's specified target Dec [deg]
ra_nom	223.7682101067	Nominal RA [deg]
dec_nom	51.92299650266	Nominal Dec [deg]
roll_nom	252.46243067219	Nominal Roll [deg]
revision	2	Processing version of data
ontime	10158.70007813	Sum of GTIs [s]
livetime	10025.969182883	Livetime [s]
ontime5	10158.70007813	Sum of GTIs [s]
ontime6	10155.559067845	Sum of GTIs [s]
ontime7	10158.70007813	Sum of GTIs [s]
ontime8	10155.559067905	Sum of GTIs [s]
l2events	106624	Number of level 2 events



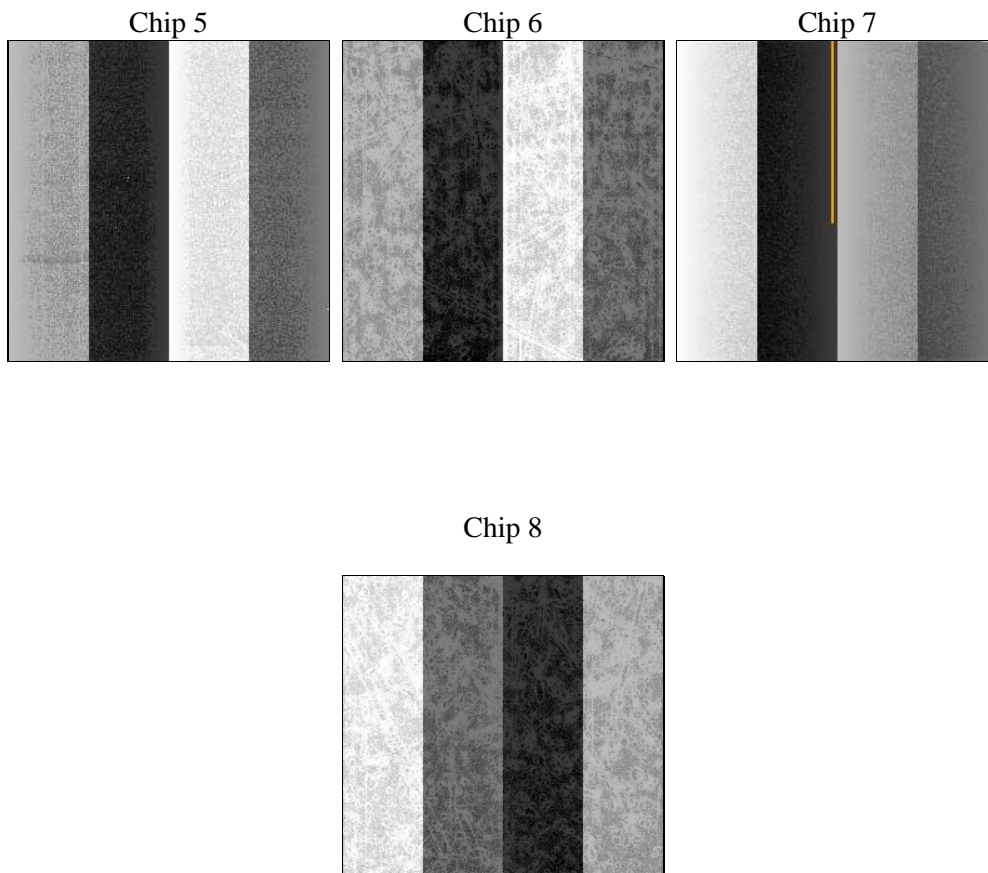
2 OBI

2.1 OBI

2.1.1 Images



2.1.2 Bias



2.1.3 Parameters

obi_num	0	Obi number	sched_exp_time	10000.000000	[s] Scheduled observation exposure time
ascdsver	8.4.5	Processing system revision	ontime	10158.70007813	Sum of GTIs [s]
caldsver	4.4.10	 	ontime5	10158.70007813	Sum of GTIs [s]
date	2012-06-11T00:33:10	Date and time of file creation	ontime6	10155.559067845	Sum of GTIs [s]
revision	2	Processing version of data	ontime7	10158.70007813	Sum of GTIs [s]
			ontime8	10155.559067905	Sum of GTIs [s]
			l1events	393271	Number of level 1 events

2.1.4 Events

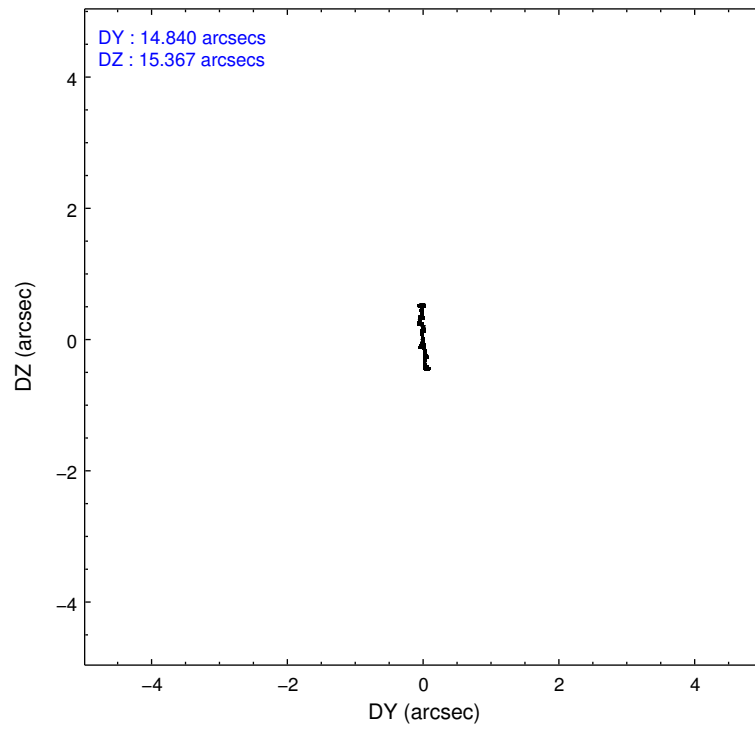
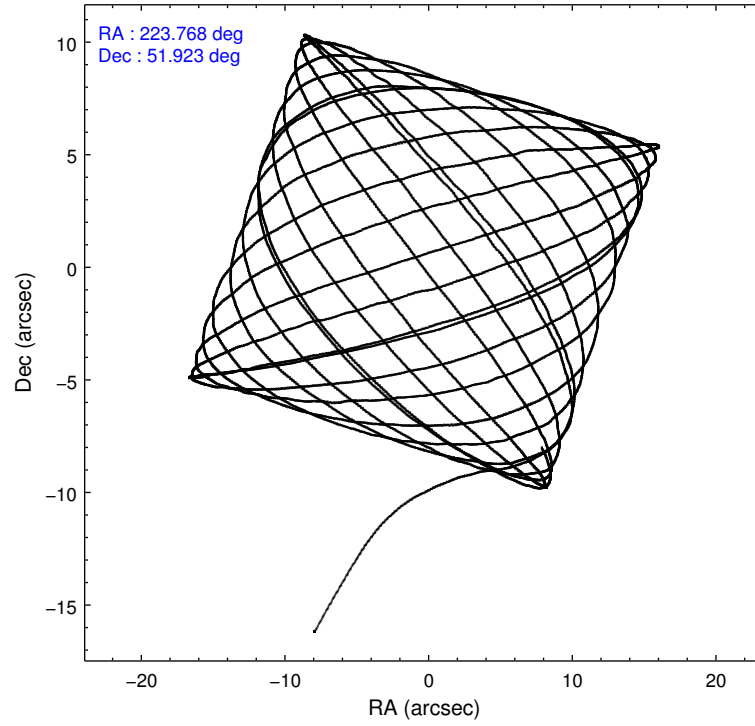
	ccd 5	ccd 6	ccd 7	ccd 8
level 1 events	113588	86740	85827	107116
rejected events	56375	78174	45999	81134
rejected %	49%	90%	53%	75%

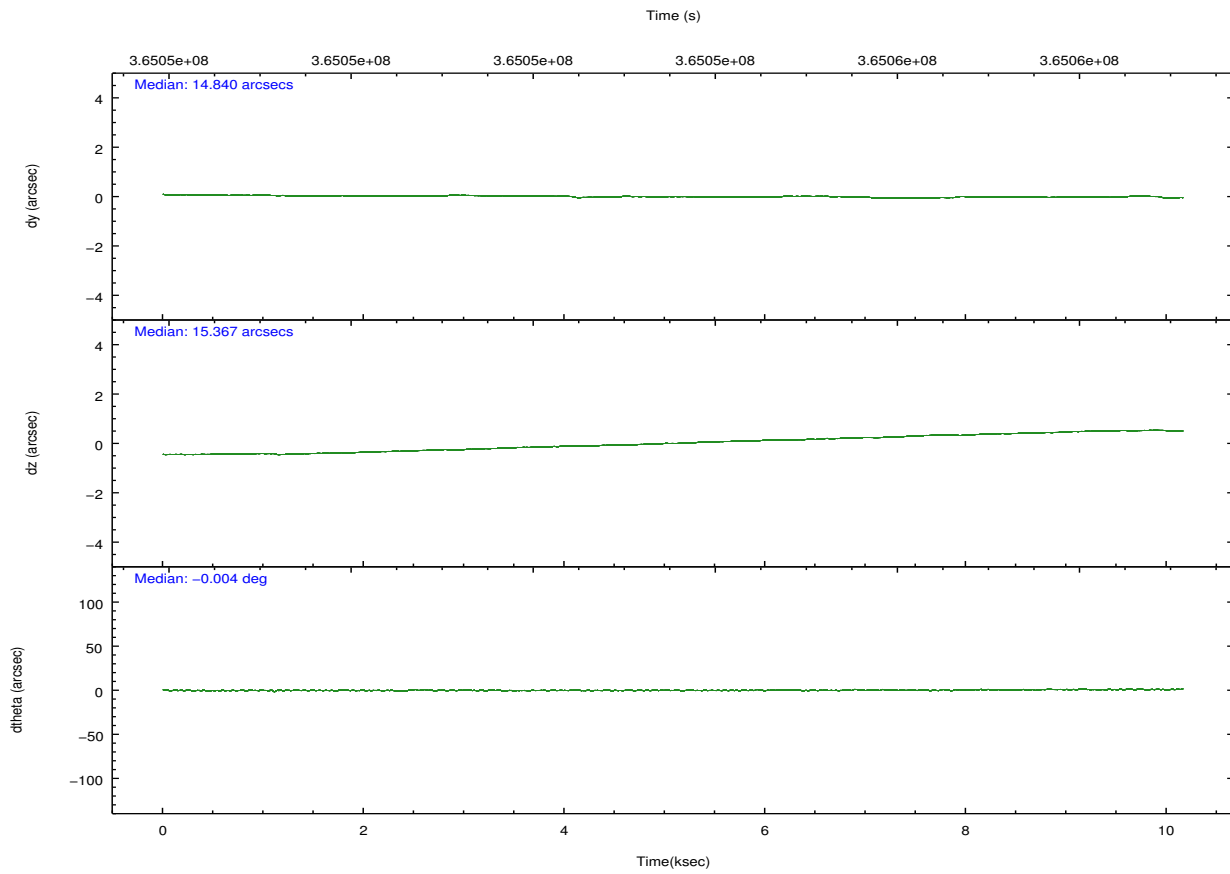
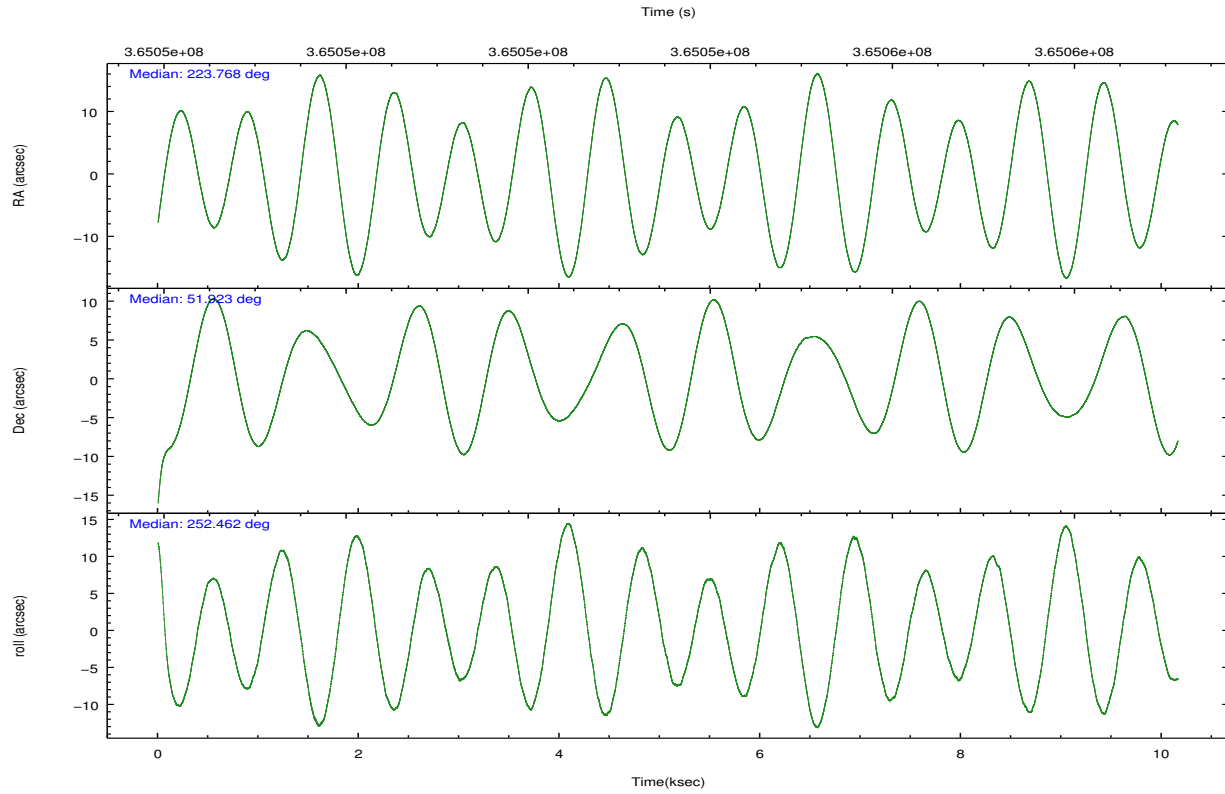
	ccd 5	ccd 6	ccd 7	ccd 8
grade 0 events	7603	3249	4188	7830
	6%	3%	4%	7%
grade 1 events	280	43	152	97
	0%	0%	0%	0%
grade 2 events	18202	2018	8937	6352
	16%	2%	10%	5%
grade 3 events	2327	1000	3917	3013
	2%	1%	4%	2%
grade 4 events	2312	928	3885	2783
	2%	1%	4%	2%
grade 5 events	8886	3159	9181	4593
	7%	3%	10%	4%
grade 6 events	30113	1810	20989	7559
	26%	2%	24%	7%
grade 7 events	43865	74533	34578	74889
	38%	85%	40%	69%

2.2 Compared Parameters

Parameter	Planned	Actual	Parameter	Planned	Actual
Instrument	ACIS	ACIS	Obspar format version number	7	7
Detector	ACIS-5678	ACIS-5678	Obspar file type	PREDICTED	ACTUAL
Grating	NONE	NONE	Obspar update status	NONE	UPDATED
Data mode	VFAINT	VFAINT	Number of optional ACIS chips dropped	0	0
Observation mode	POINTING	POINTING	On-chip summing requested	N	N
[deg] Pointing RA	223.758000	223.7682101067004	Subarray requested	NONE	NONE
[deg] Pointing Dec	51.949663	51.92299650266001	Alternating exposures requested	N	N
[deg] Pointing Roll	252.313839	252.46243067219	[s] Primary exposure time	0.000000	3.1
[mm] SIM focus pos	-0.684267	-0.6828225247311905			
[mm] SIM defocus	0	0.001444936568705701			
[mm] SIM translation stage pos	-190.132523	-190.1425803651734			
[mm] SIM translation stage offset	0	0.01005778216563158			
[s] Observation start time (MET)	365048615.184000	365047416.33795			
Observation start date	2009-07-27T02:22:29	2009-07-27T02:03:36			
[s] Observation end time (MET)	365058615.184000	365059678.92606			
Observation end date	2009-07-27T05:09:09	2009-07-27T05:27:58			
Read mode	TIMED	TIMED			

2.3 Aspect



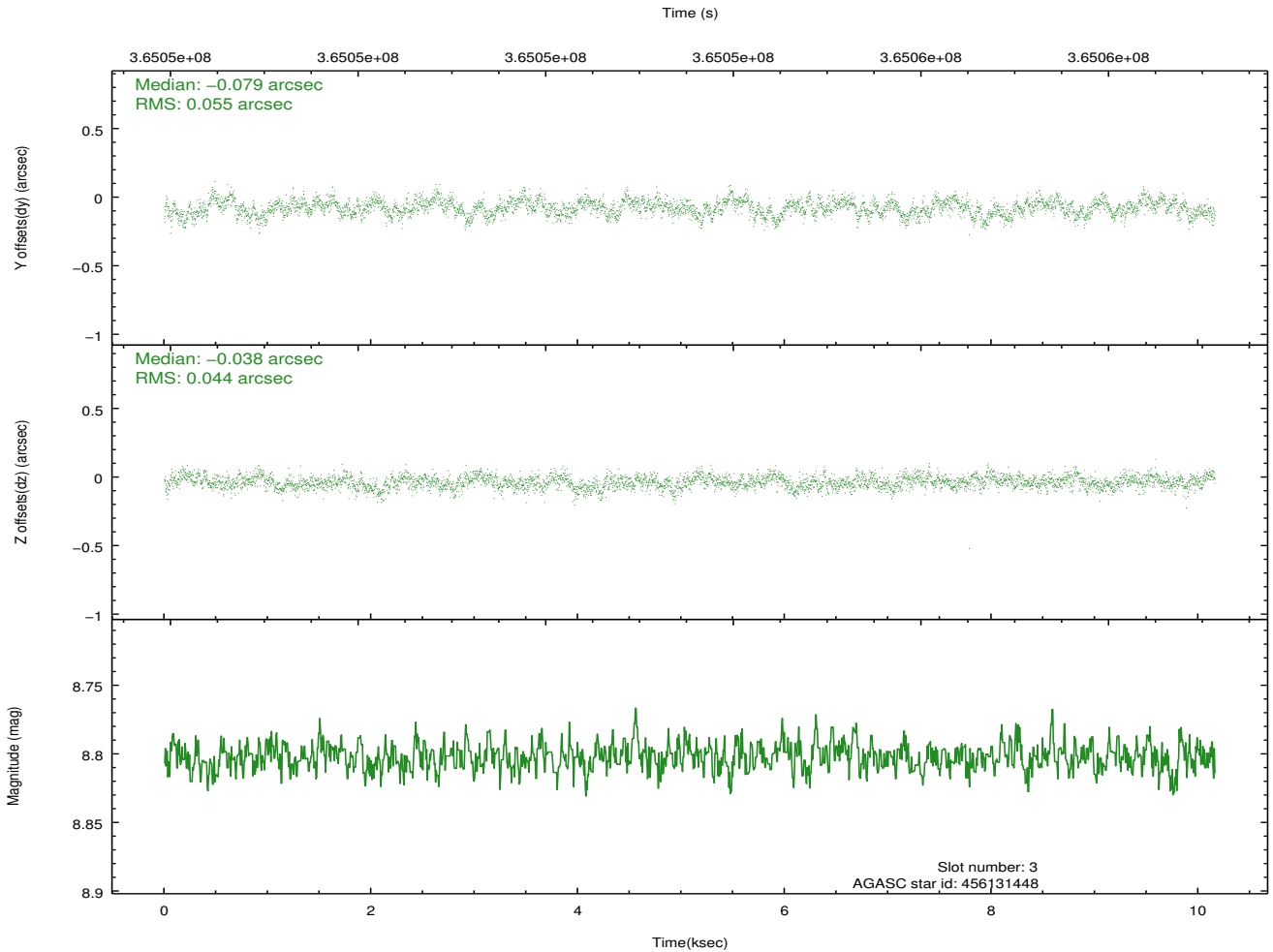
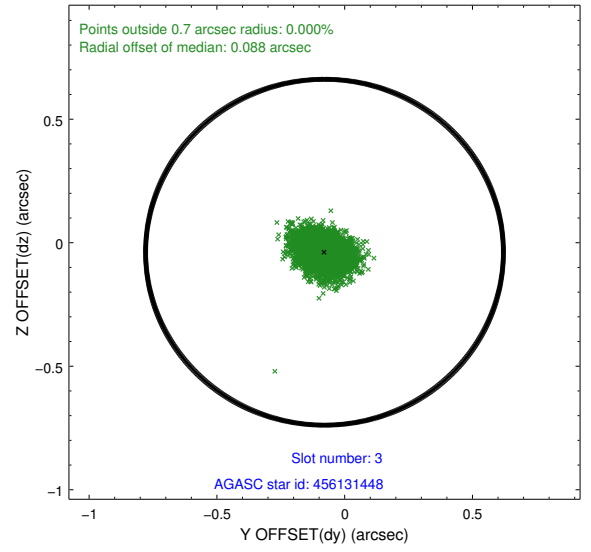
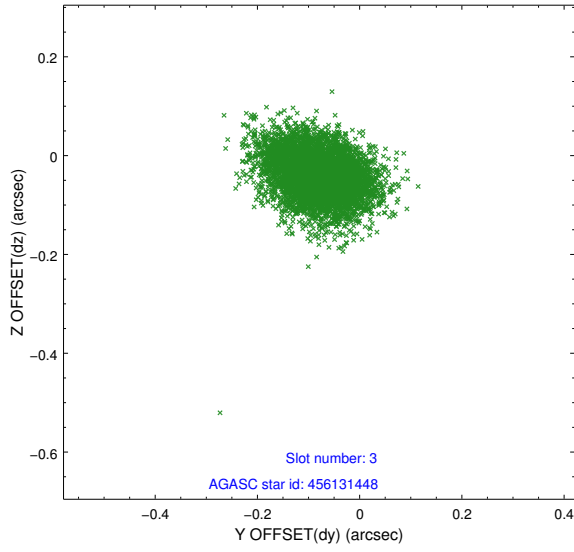


Slot Statistics

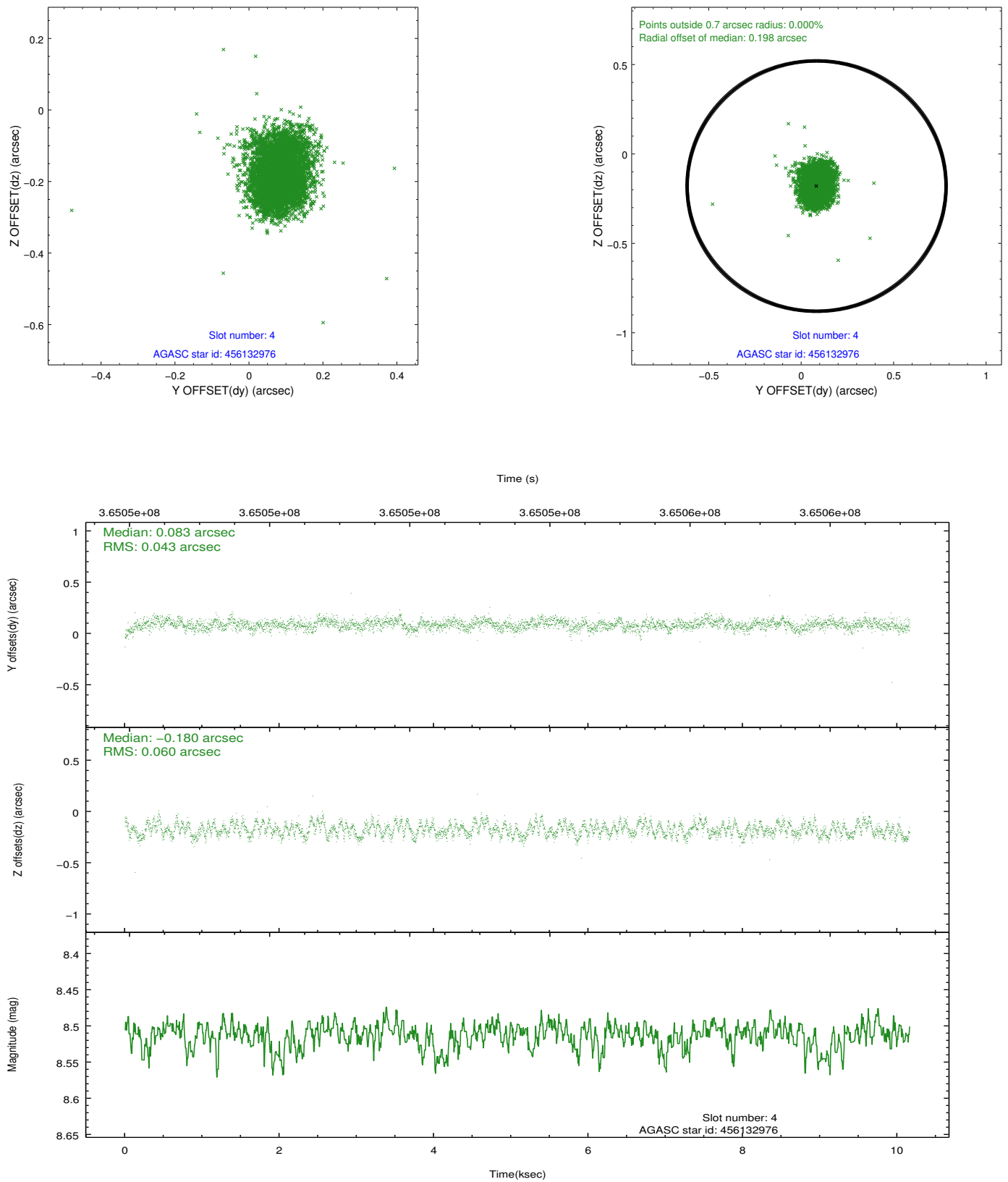
slot	status	id	mag	n_pts	med_dy	med_dz	dr1	dr2	ra	dec	mean_y	mean_z
0	FID	ACIS-S-2	7.00	2479	-0.099	-0.034	0.008	0.012	0.000000	0.000000	-767.90	-1736.76
1	FID	ACIS-S-4	7.10	2479	0.222	0.057	0.006	0.011	0.000000	0.000000	2145.45	171.30
2	FID	ACIS-S-5	7.13	2479	-0.154	-0.015	0.007	0.012	0.000000	0.000000	-1820.14	165.46
3	GUIDE	456131448	8.80	4950	-0.079	-0.038	0.074	0.122	224.726970	52.184757	-1469.45	1776.40
4	GUIDE	456132976	8.51	4935	0.083	-0.180	0.077	0.121	223.690790	51.749836	730.62	76.19
5	GUIDE	456137896	7.50	4956	0.079	0.083	0.053	0.087	222.694463	51.528719	2151.55	-1813.67
6	GUIDE	506071024	7.73	4958	-0.056	0.135	0.057	0.093	223.906104	52.567262	-2215.65	-369.05
7	GUIDE	506079216	7.97	4957	-0.028	0.002	0.067	0.106	223.023700	52.589114	-1713.69	-2232.34

2.4 Star Slots

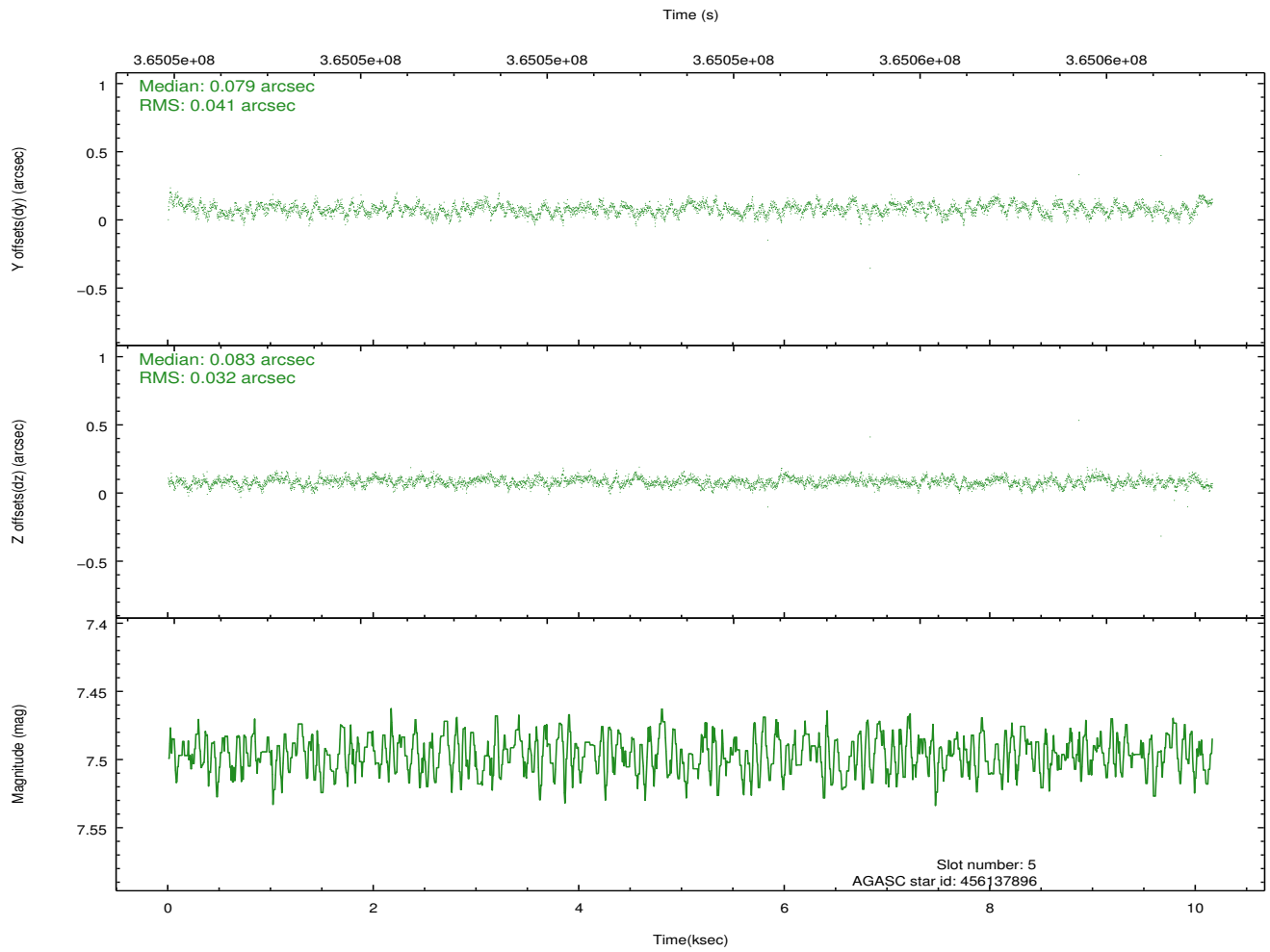
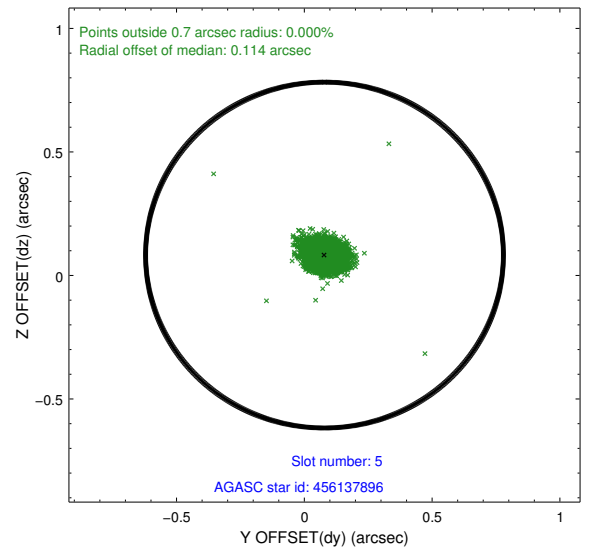
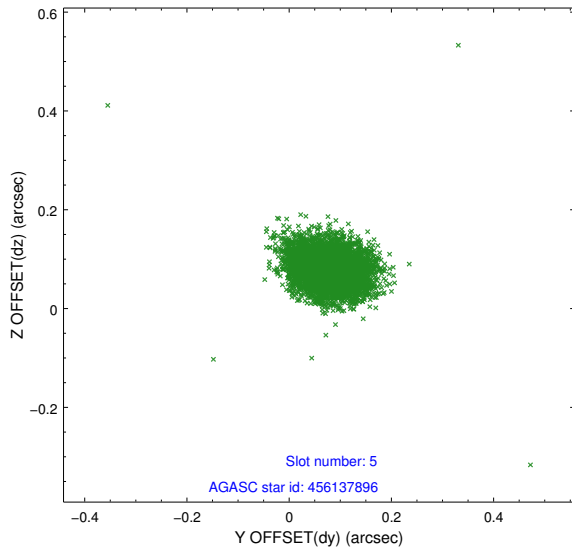
2.4.1 Slot 3



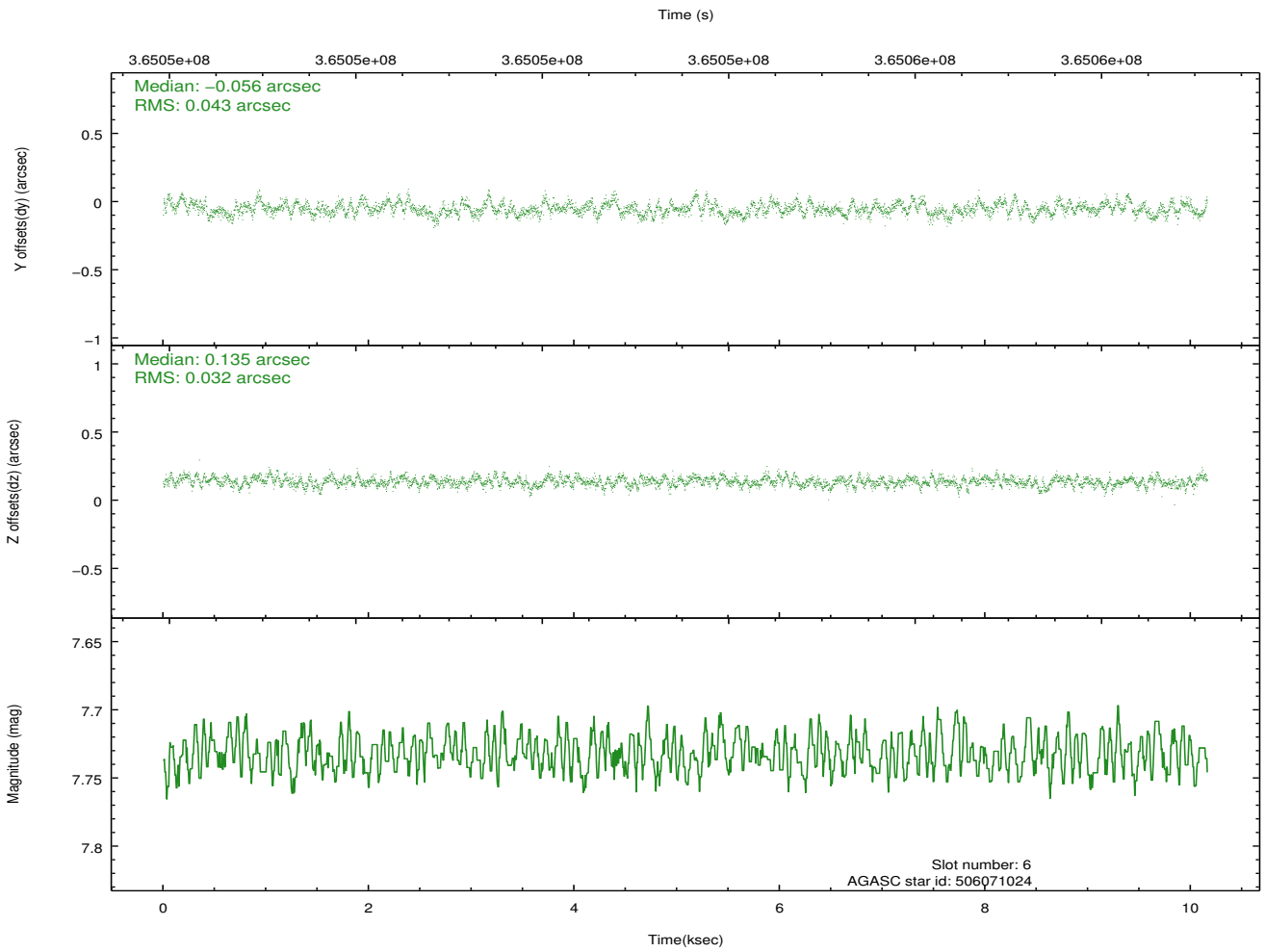
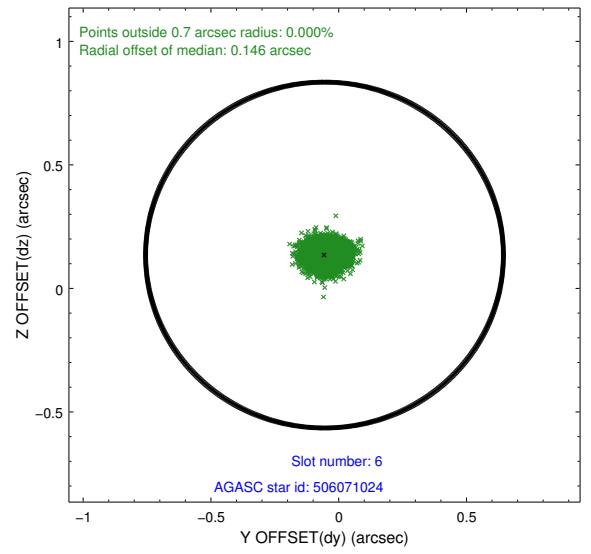
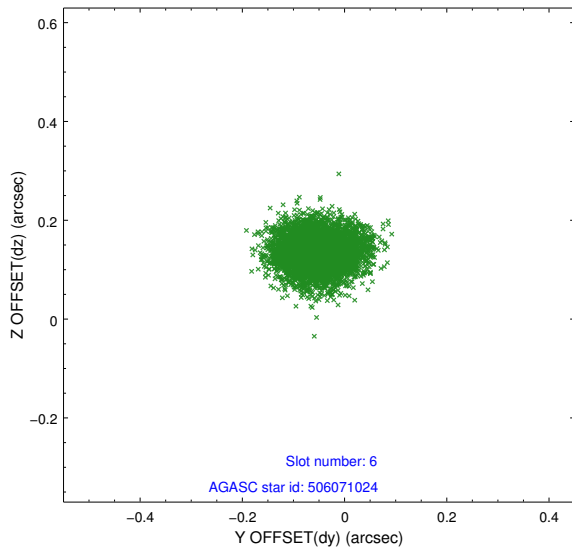
2.4.2 Slot 4



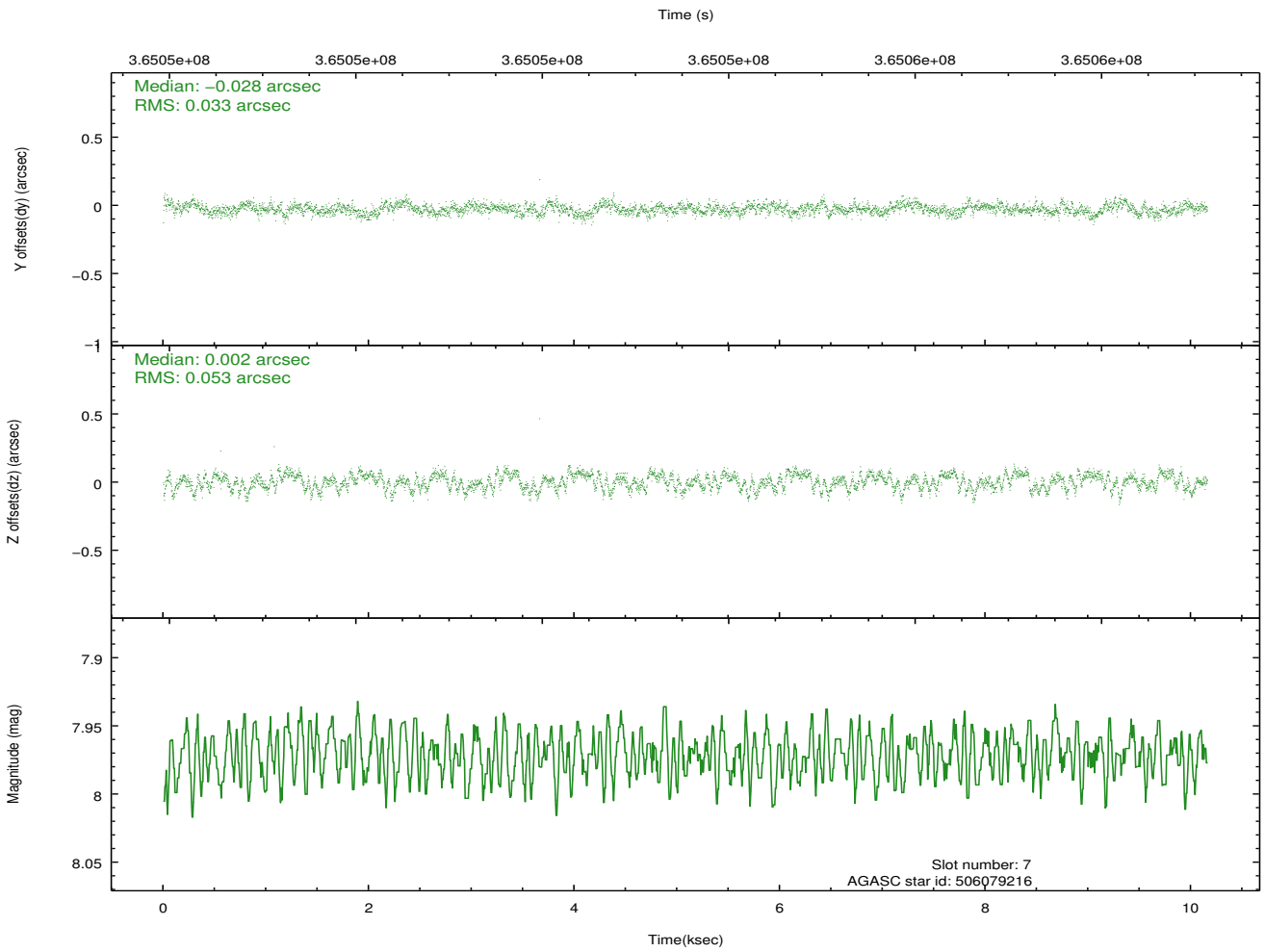
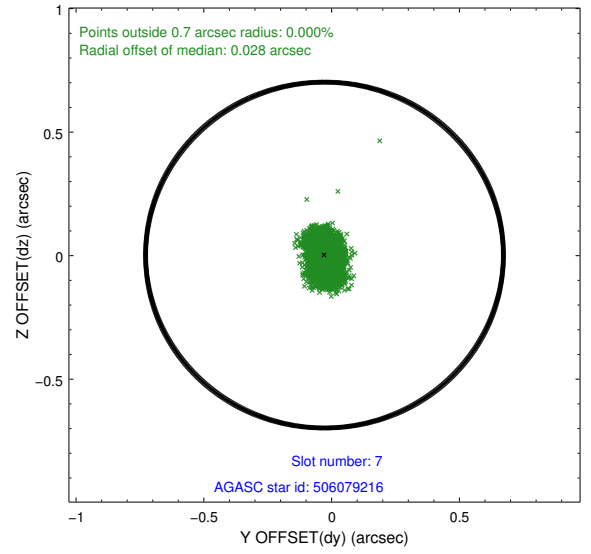
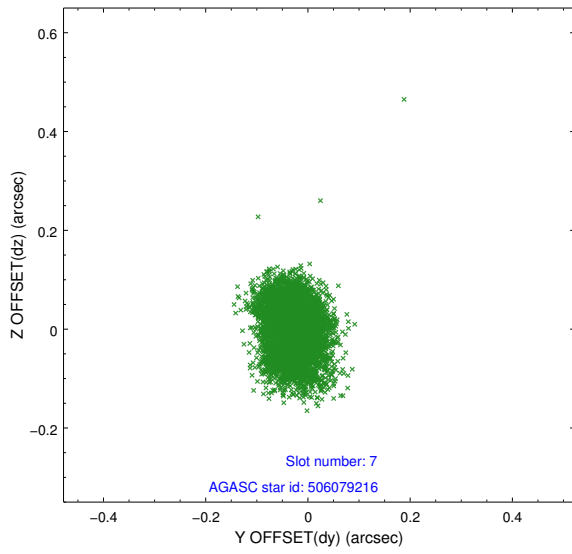
2.4.3 Slot 5



2.4.4 Slot 6

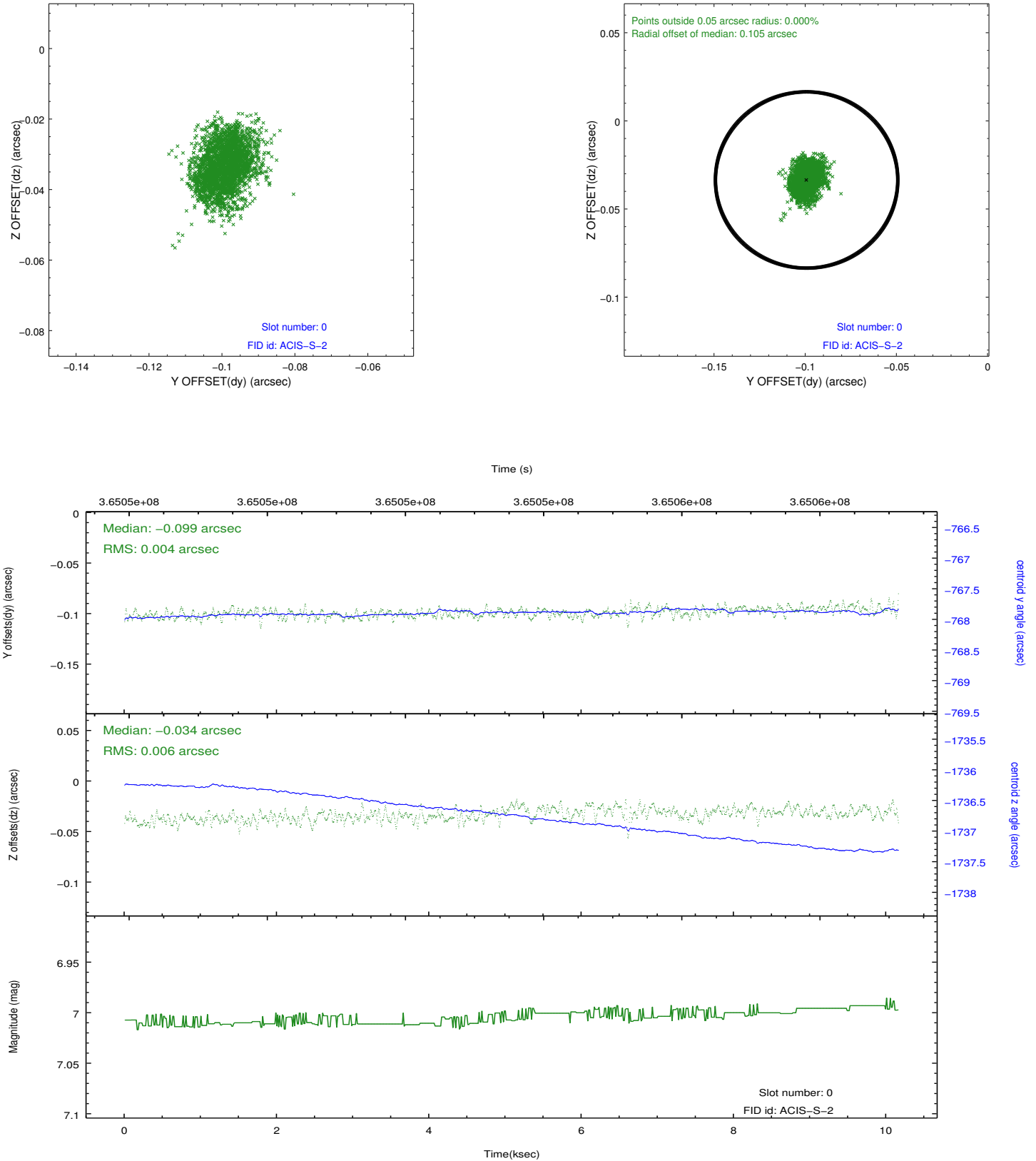


2.4.5 Slot 7

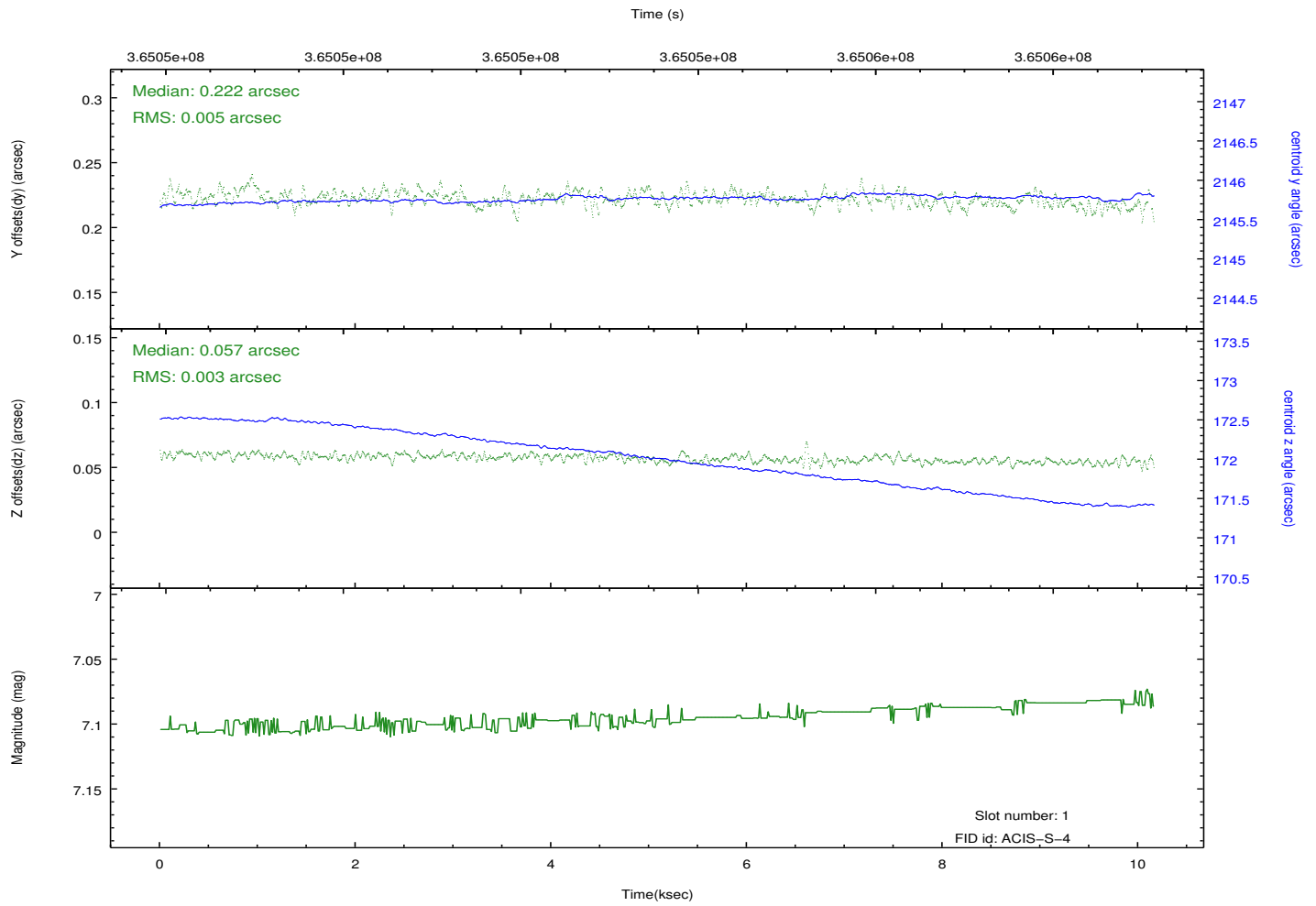
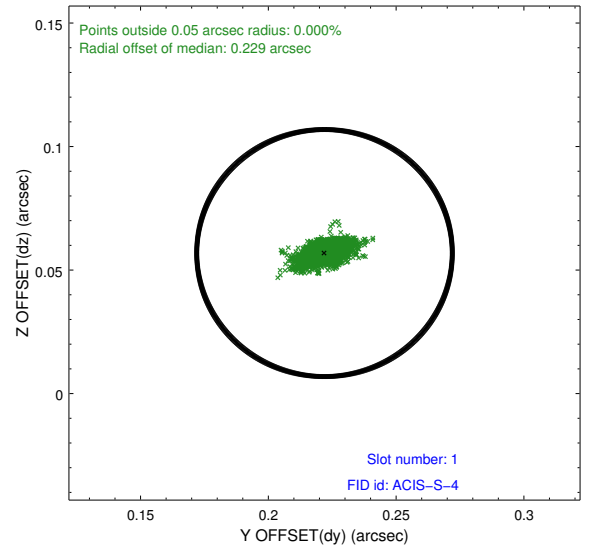
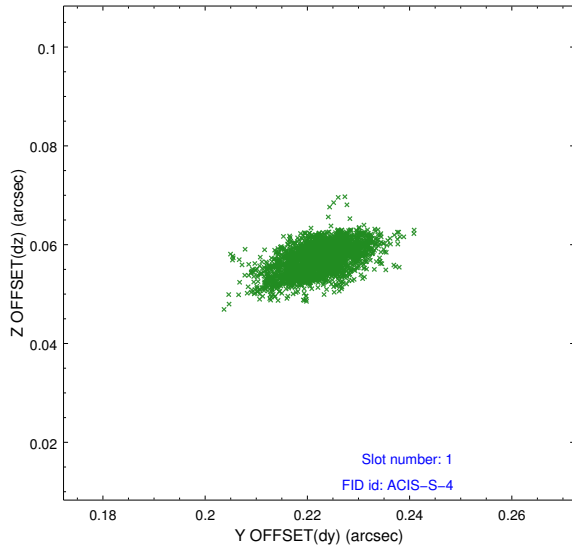


2.5 FID Slots

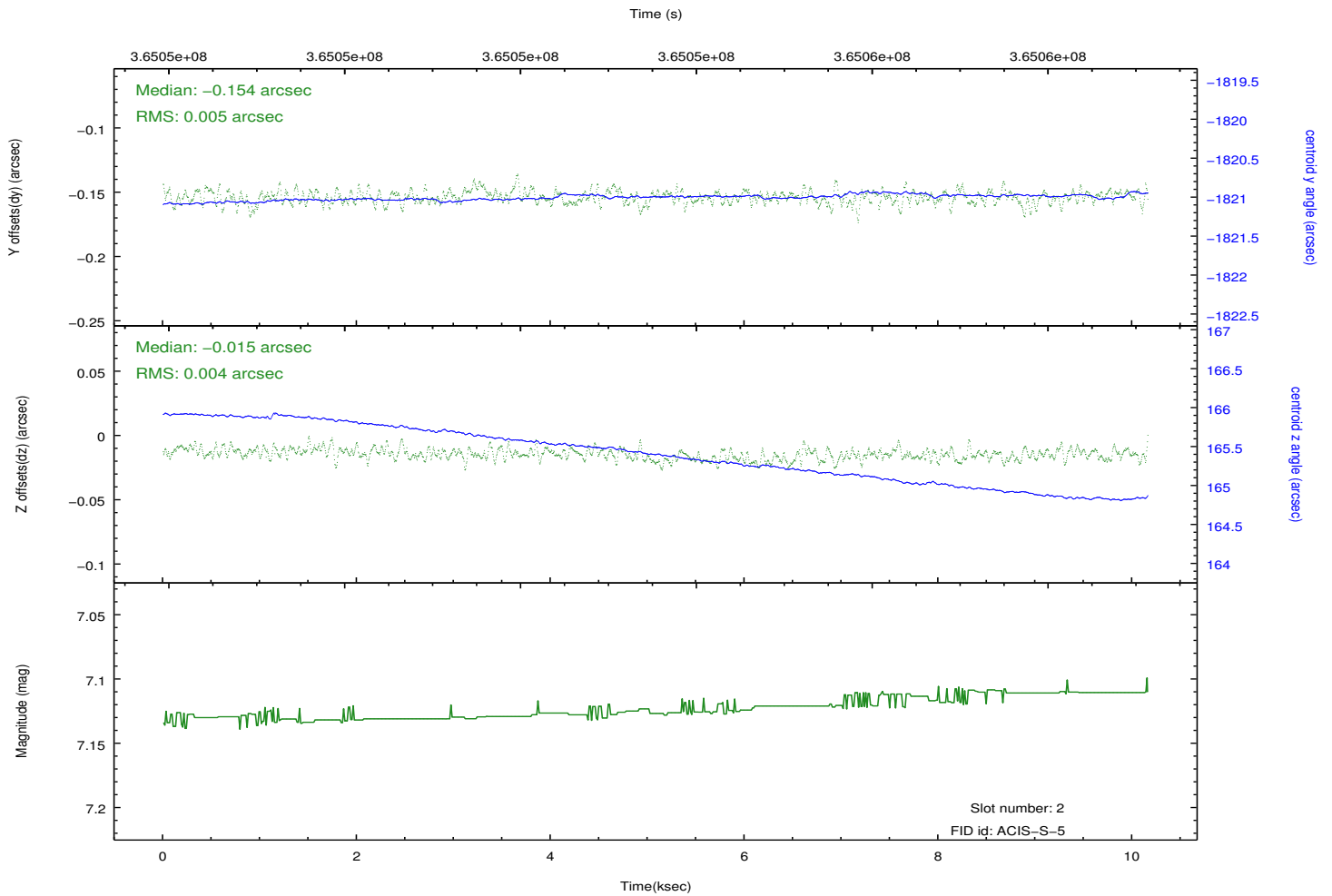
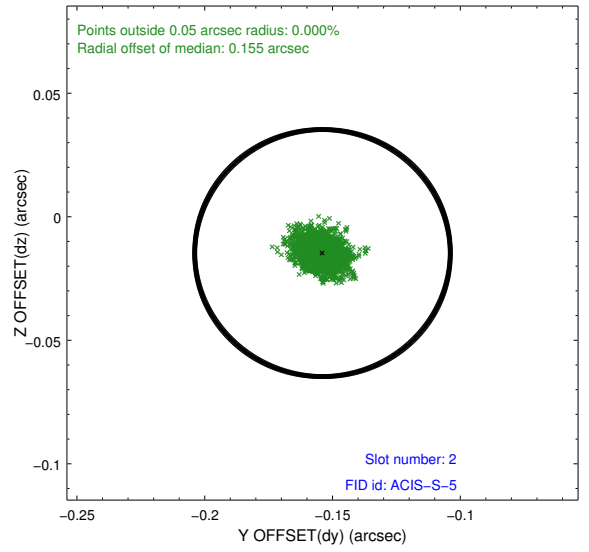
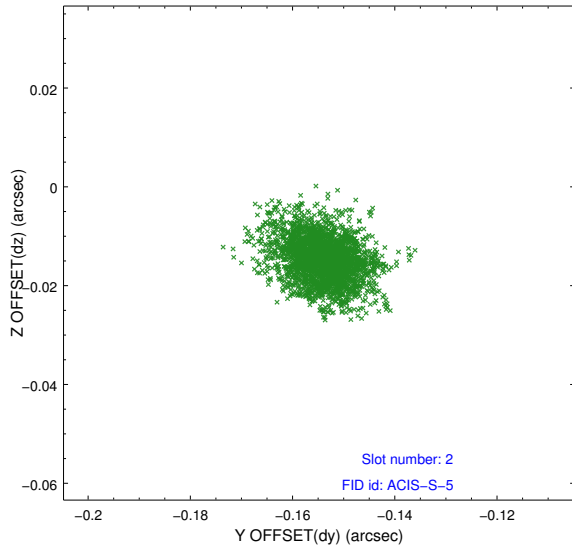
2.5.1 Slot 0



2.5.2 Slot 1



2.5.3 Slot 2



A Summary

A.1 Status

V&V Scientist	Jen Lauer
V&V Date (YYYY-MM-DD)	2012.06.14
V&V Edition	1
V&V Disposition and Status	OK
V&V Charge Time	10.1587

A.2 Comments