

V&V Reference Report

L2 ASCDS Version : 8.4.4

Observation 10672 - L2 Version 2
Chandra X-Ray Center

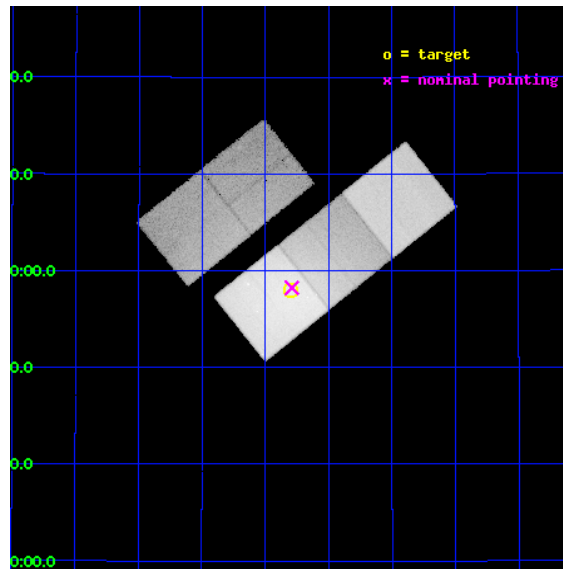
L2 Processing Date : Jun 2 2012

Contents

1	Front	2
2	OBI	3
2.1	OBI	3
2.1.1	Images	3
2.1.2	Bias	3
2.1.3	Parameters	4
2.1.4	Events	4
2.2	Compared Parameters	5
2.3	Aspect	6
2.4	Star Slots	9
2.4.1	Slot 3	9
2.4.2	Slot 4	10
2.4.3	Slot 5	11
2.4.4	Slot 6	12
2.4.5	Slot 7	13
2.5	FID Slots	14
2.5.1	Slot 0	14
2.5.2	Slot 1	15
2.5.3	Slot 2	16
A	Summary	17
A.1	Status	17
A.2	Comments	17

1 Front

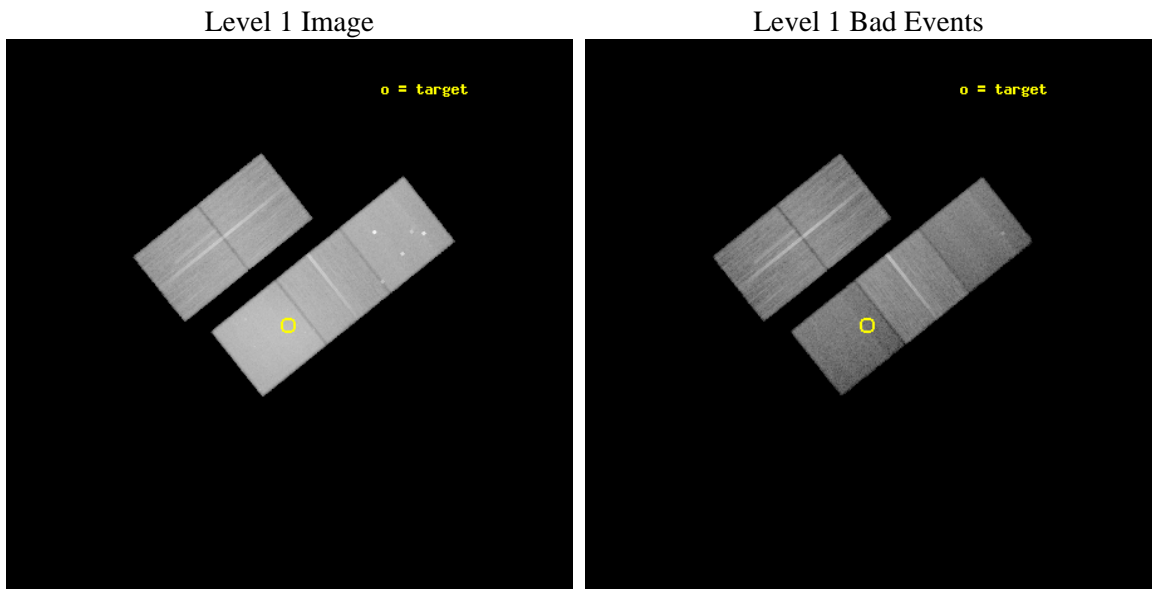
seq_num	890037	Sequence number
obs_id	10672	Observation id
title	Calibration Observation of the Coma Cluster	Proposal title
observer	Dr. CXC Calibration	Principal investigator
object	Coma Cluster	Source name
dtcycle	0	
cycle	P	events from which exps? Prim/Second/Both
ra_targ	194.95	Observer's specified target RA [deg]
dec_targ	27.966667	Observer's specified target Dec [deg]
ra_nom	194.94750780995	Nominal RA [deg]
dec_nom	27.970489328931	Nominal Dec [deg]
roll_nom	141.33191460555	Nominal Roll [deg]
revision	2	Processing version of data
ontime	28910.600222349	Sum of GTIs [s]
livetime	28532.86194677	Livetime [s]
ontime2	28907.459191978	Sum of GTIs [s]
ontime3	28910.600222349	Sum of GTIs [s]
ontime5	28910.600222349	Sum of GTIs [s]
ontime6	28907.459202051	Sum of GTIs [s]
ontime7	28910.600222349	Sum of GTIs [s]
l2events	784865	Number of level 2 events



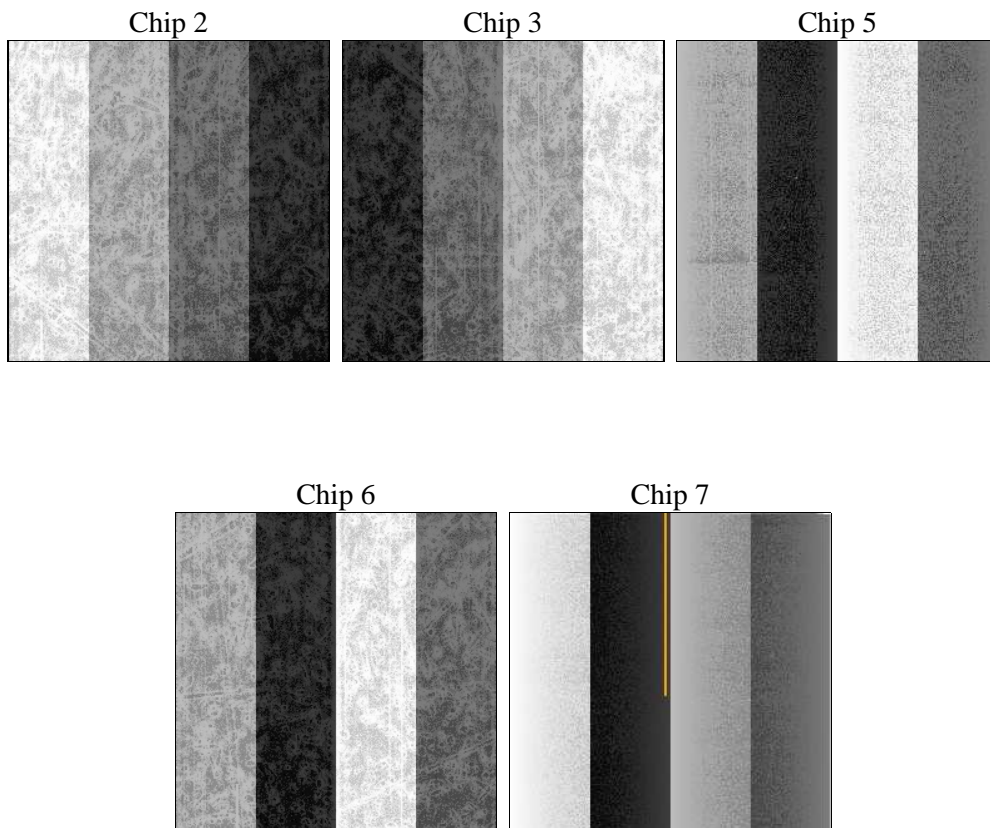
2 OBI

2.1 OBI

2.1.1 Images



2.1.2 Bias



2.1.3 Parameters

obi_num	0	Obi number	sched_exp_time	28750.000000	[s] Scheduled observation exposure time
ascdsver	8.4.4	Processing system revision	ontime	28910.600222349	Sum of GTIs [s]
caldbver	4.4.9	 	ontime2	28907.459191978	Sum of GTIs [s]
date	2012-06-02T15:35:17	Date and time of file creation	ontime3	28910.600222349	Sum of GTIs [s]
revision	2	Processing version of data	ontime5	28910.600222349	Sum of GTIs [s]
			ontime6	28907.459202051	Sum of GTIs [s]
			ontime7	28910.600222349	Sum of GTIs [s]
			l1events	1750457	Number of level 1 events

2.1.4 Events

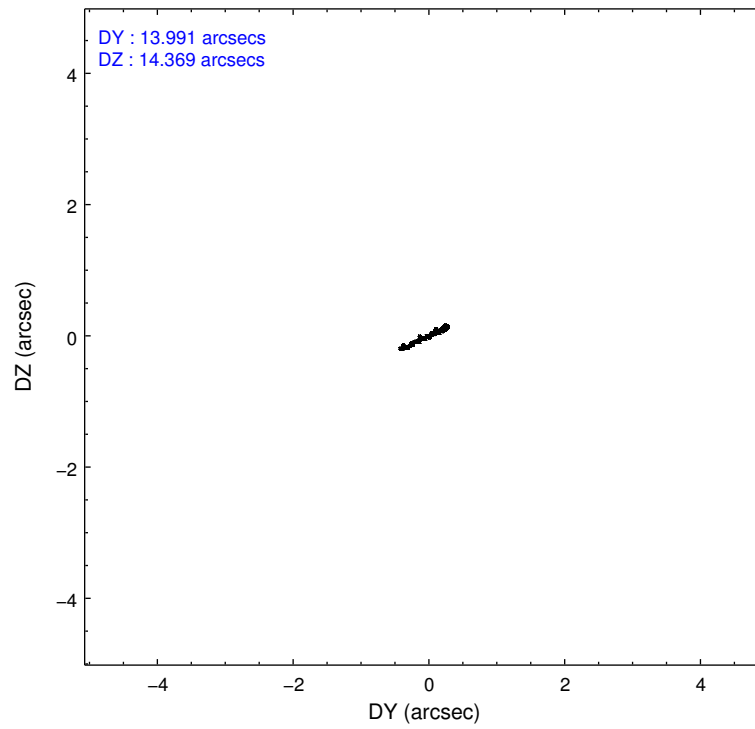
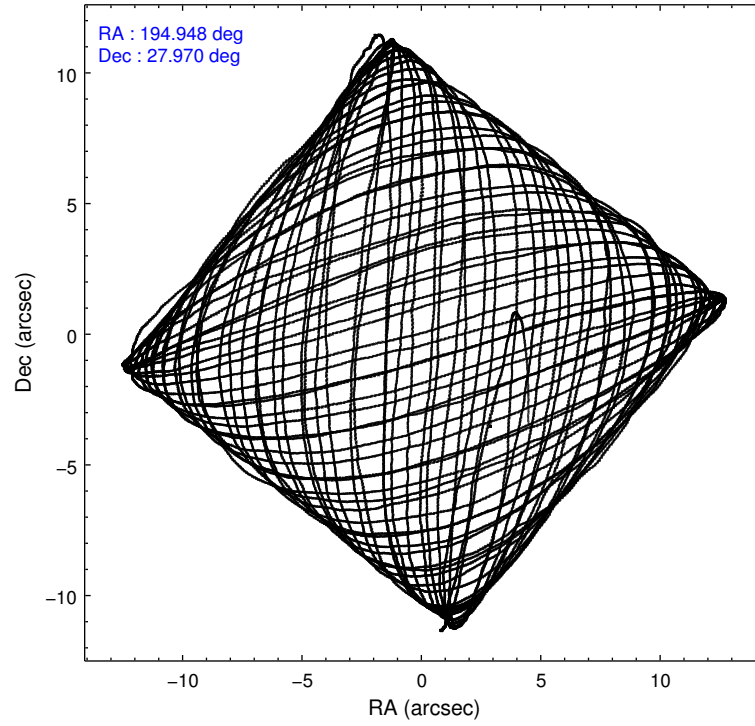
	ccd 2	ccd 3	ccd 5	ccd 6	ccd 7
level 1 events	266943	264083	347425	357744	514262
rejected events	221359	211160	144006	224245	122240
rejected %	82%	79%	41%	62%	23%

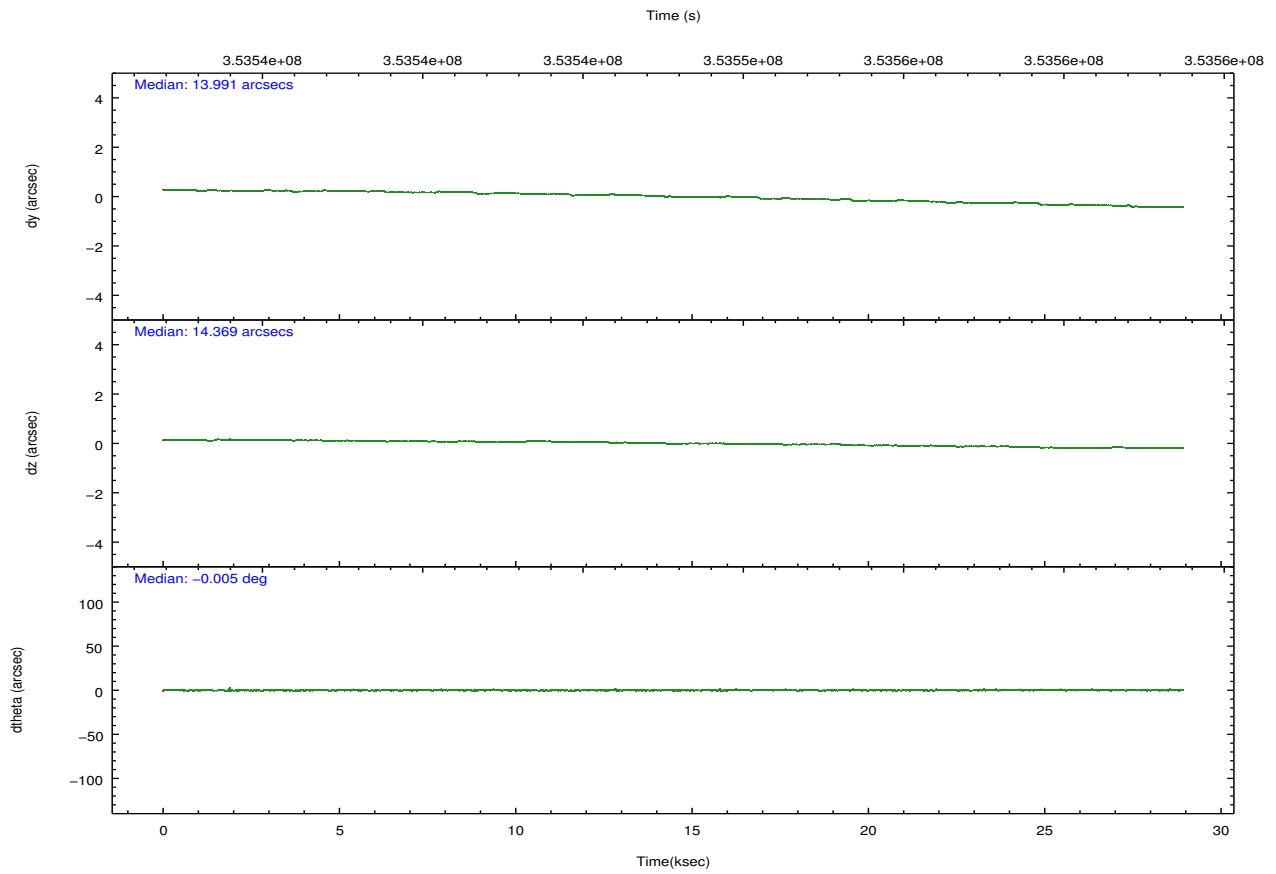
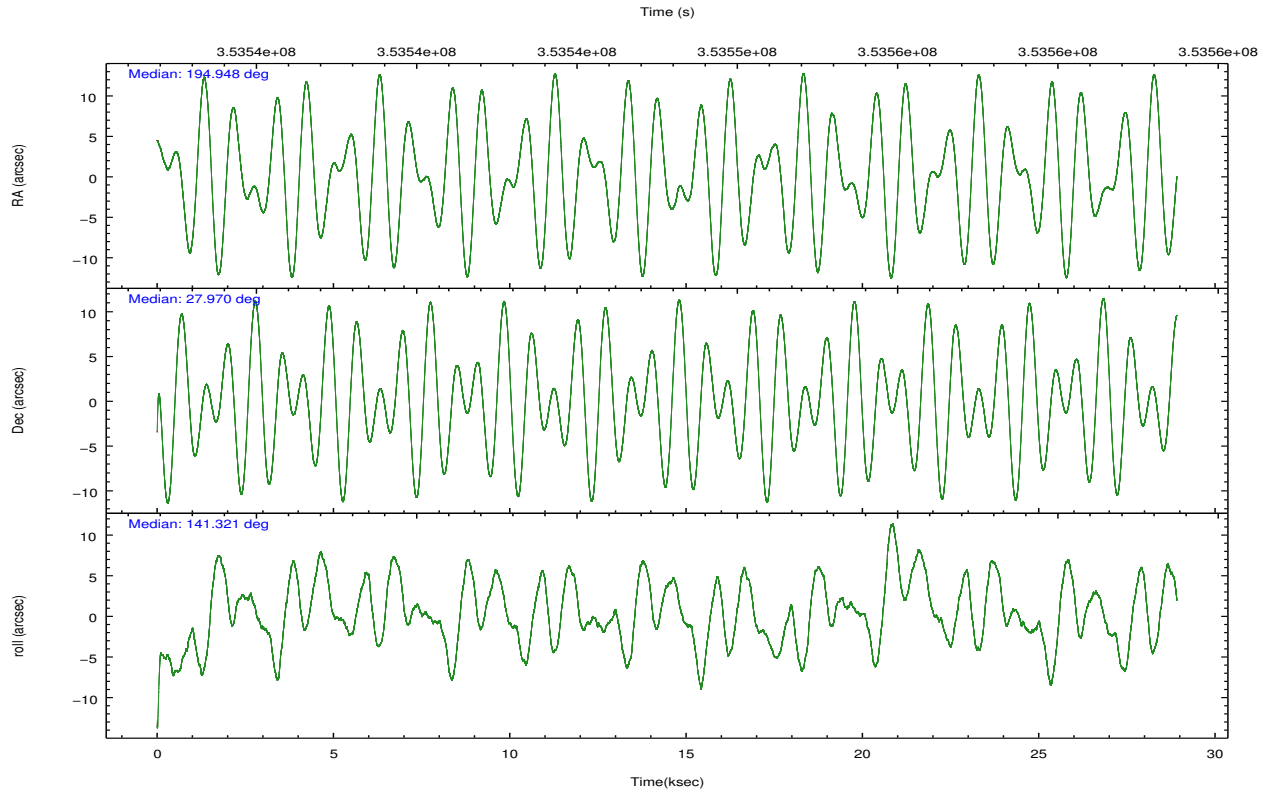
	ccd 2	ccd 3	ccd 5	ccd 6	ccd 7
grade 0 events	27229	33509	39976	97595	96886
	10%	12%	11%	27%	18%
grade 1 events	274	291	1023	584	395
	0%	0%	0%	0%	0%
grade 2 events	7634	8071	59710	16544	97272
	2%	3%	17%	4%	18%
grade 3 events	3214	3511	10222	6175	42449
	1%	1%	2%	1%	8%
grade 4 events	3270	3346	9984	5964	42108
	1%	1%	2%	1%	8%
grade 5 events	6771	8286	24418	8773	26094
	2%	3%	7%	2%	5%
grade 6 events	4614	4972	85677	8203	116446
	1%	1%	24%	2%	22%
grade 7 events	213937	202097	116415	213906	92612
	80%	76%	33%	59%	18%

2.2 Compared Parameters

Parameter	Planned	Actual	Parameter	Planned	Actual
Instrument	ACIS	ACIS	Obspar format version number	7	7
Detector	ACIS-23567	ACIS-23567	Obspar file type	PREDICTED	ACTUAL
Grating	NONE	NONE	Obspar update status	NONE	UPDATED
Data mode	VFAINT	VFAINT	Number of optional ACIS chips dropped	0	0
Observation mode	POINTING	POINTING	On-chip summing requested	N	N
[deg] Pointing RA	194.978169	194.9475078099519	Subarray requested	NONE	NONE
[deg] Pointing Dec	27.966753	27.97048932893143	Alternating exposures requested	N	N
[deg] Pointing Roll	141.160913	141.3319146055453	[s] Primary exposure time	0.000000	3.1
[s] Window start time (MET)	349833666.184000	349833666.184000			
[s] Window stop time (MET)	357436866.184000	357436866.184000			
[mm] SIM focus pos	-0.684267	-0.6828225247311905			
[mm] SIM defocus	0	0.001444936568705701			
[mm] SIM translation stage pos	-190.132523	-190.1400660498719			
[mm] SIM translation stage offset	0	0.00754346686406393			
[s] Observation start time (MET)	353533513.184000	353532360.25126			
Observation start date	2009-03-15T19:44:07	2009-03-15T19:26:00			
[s] Observation end time (MET)	353562263.184000	353563175.34029			
Observation end date	2009-03-16T03:43:17	2009-03-16T03:59:35			
Read mode	TIMED	TIMED			

2.3 Aspect



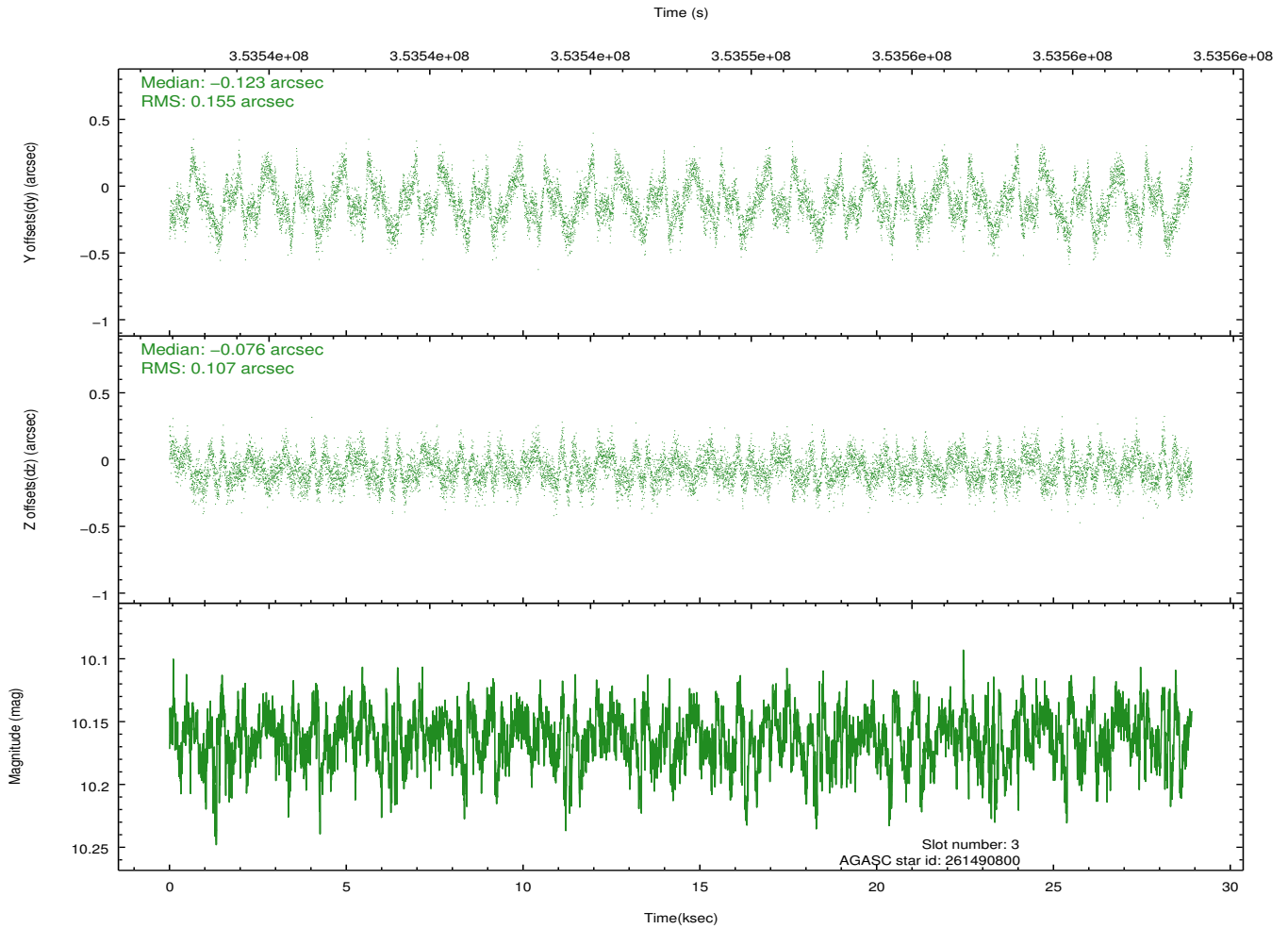
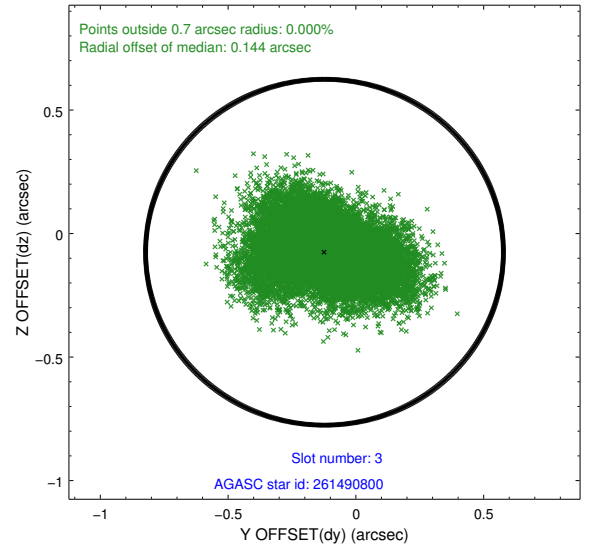
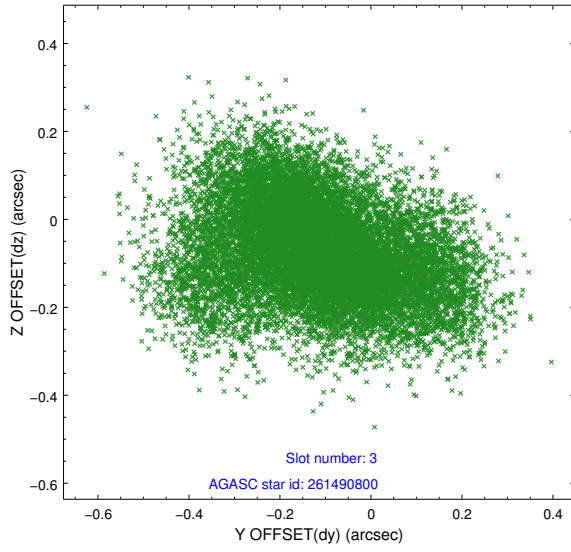


Slot Statistics

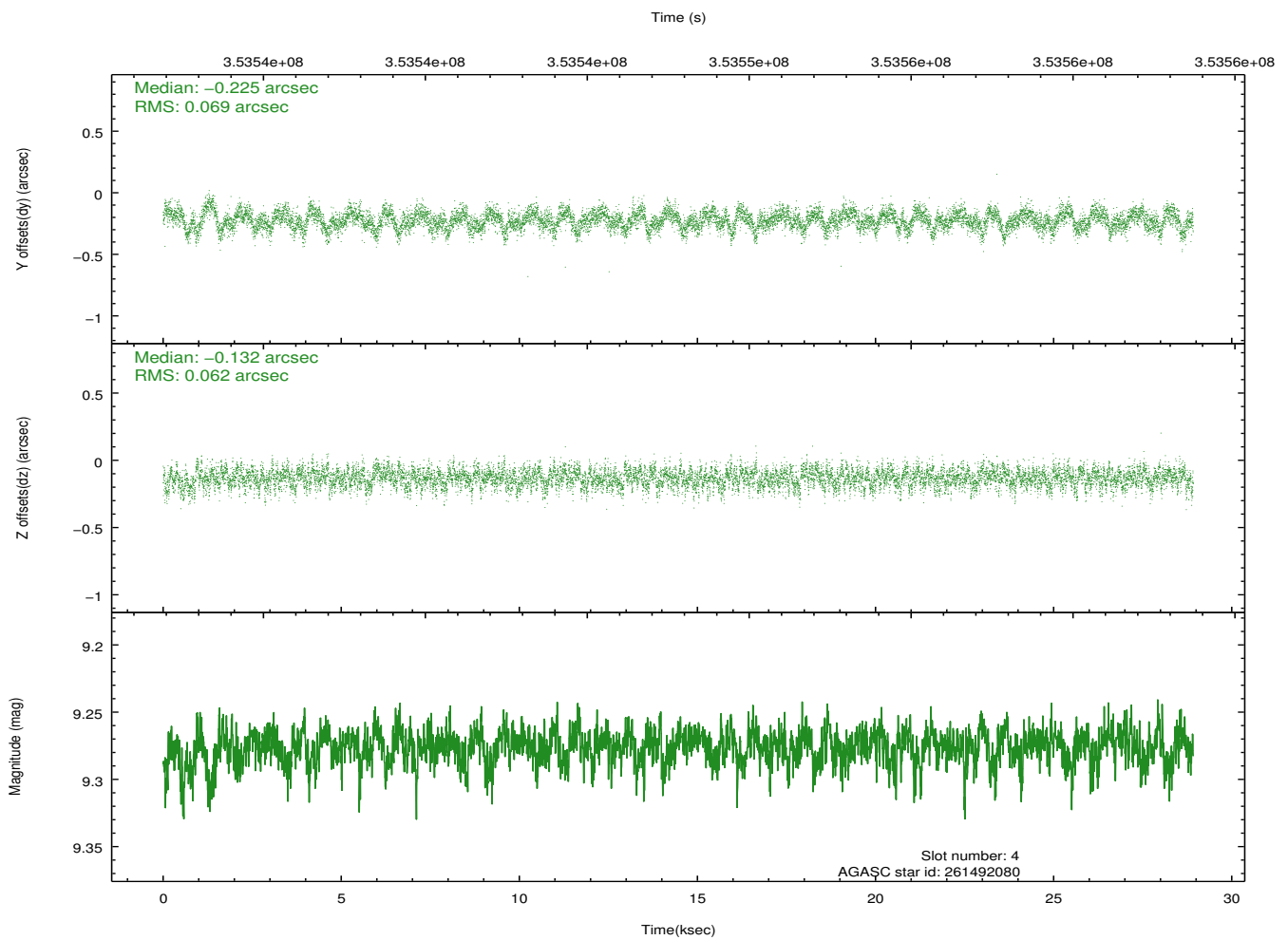
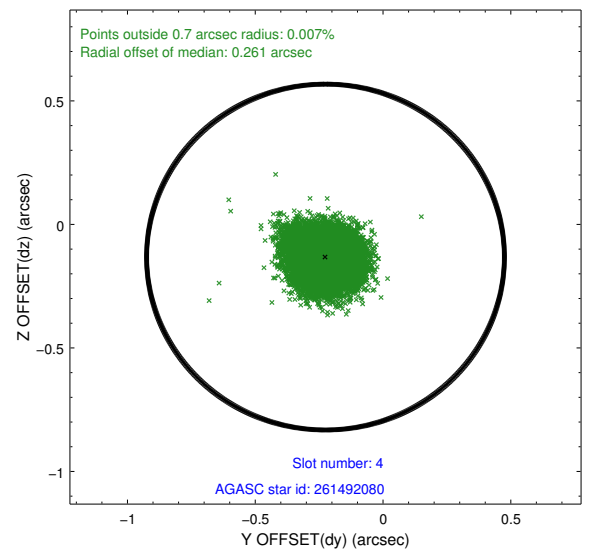
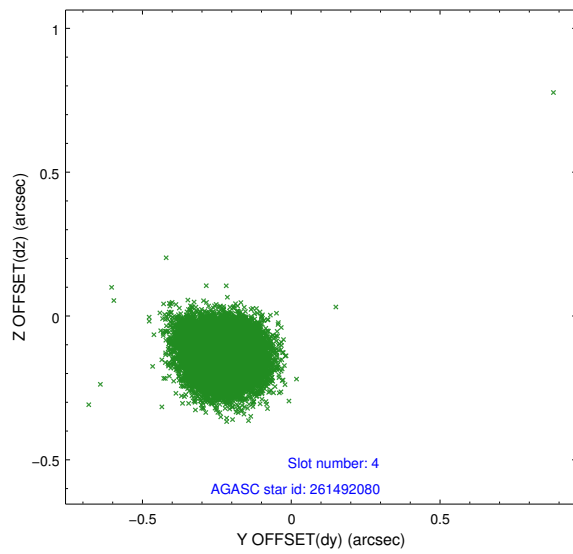
slot	status	id	mag	n_pts	med_dy	med_dz	dr1	dr2	ra	dec	mean_y	mean_z
0	FID	ACIS-S-2	6.98	7054	-0.071	-0.050	0.012	0.019	0.000000	0.000000	-766.96	-1735.78
1	FID	ACIS-S-4	7.07	7054	0.211	0.048	0.011	0.021	0.000000	0.000000	2146.54	172.74
2	FID	ACIS-S-5	7.09	7054	-0.171	0.011	0.009	0.015	0.000000	0.000000	-1819.82	166.43
3	GUIDE	261490800	10.16	14080	-0.123	-0.076	0.203	0.327	195.029641	27.224508	-1803.86	1977.96
4	GUIDE	261492080	9.28	14094	-0.225	-0.132	0.098	0.159	194.976344	28.631585	1506.00	-1860.05
5	GUIDE	261498392	8.31	14102	0.622	0.517	0.074	0.118	194.888587	28.238913	837.14	-584.21
6	GUIDE	261502496	7.35	14105	-0.347	-0.098	0.065	0.106	194.887297	28.065668	448.44	-96.16
7	GUIDE	261505232	9.77	14030	0.077	-0.215	0.138	0.249	194.216553	27.802521	1522.40	1976.43

2.4 Star Slots

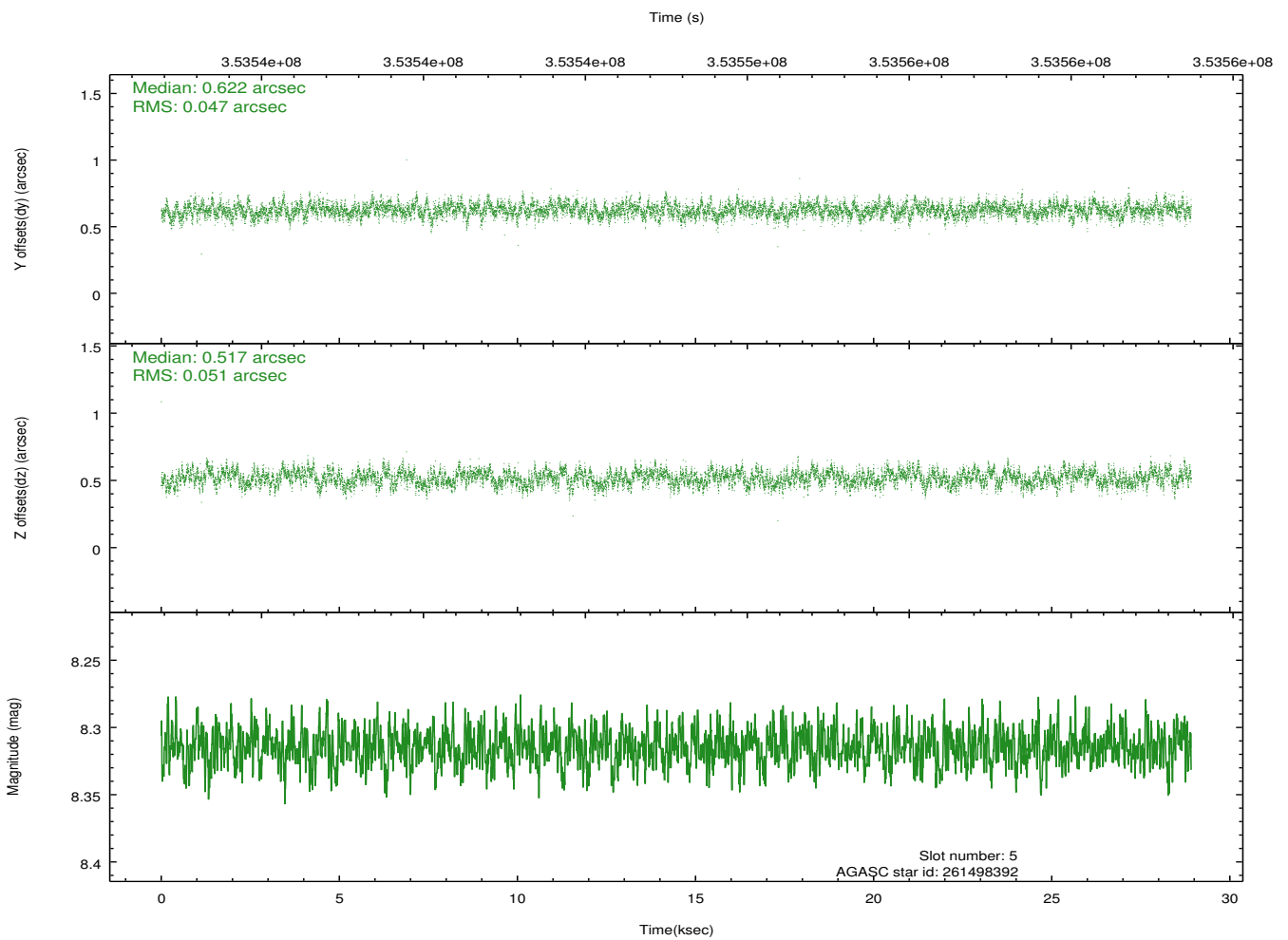
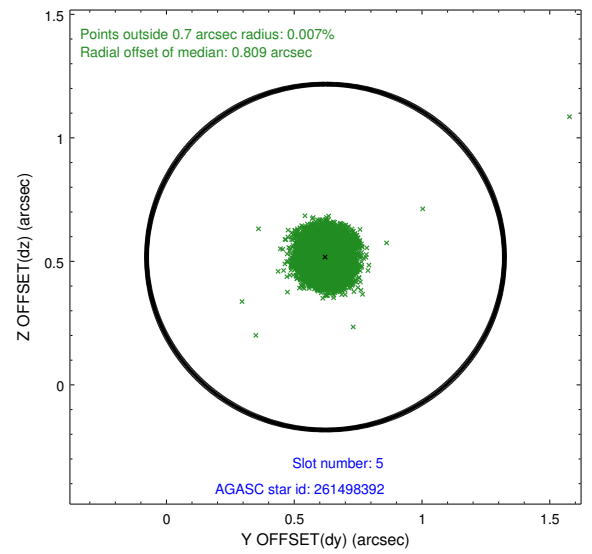
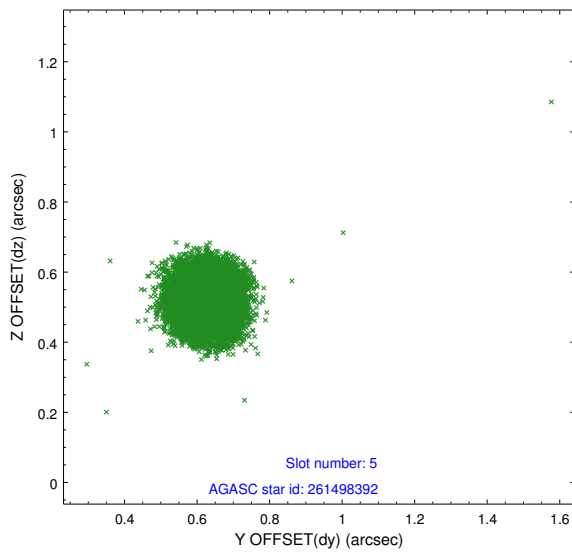
2.4.1 Slot 3



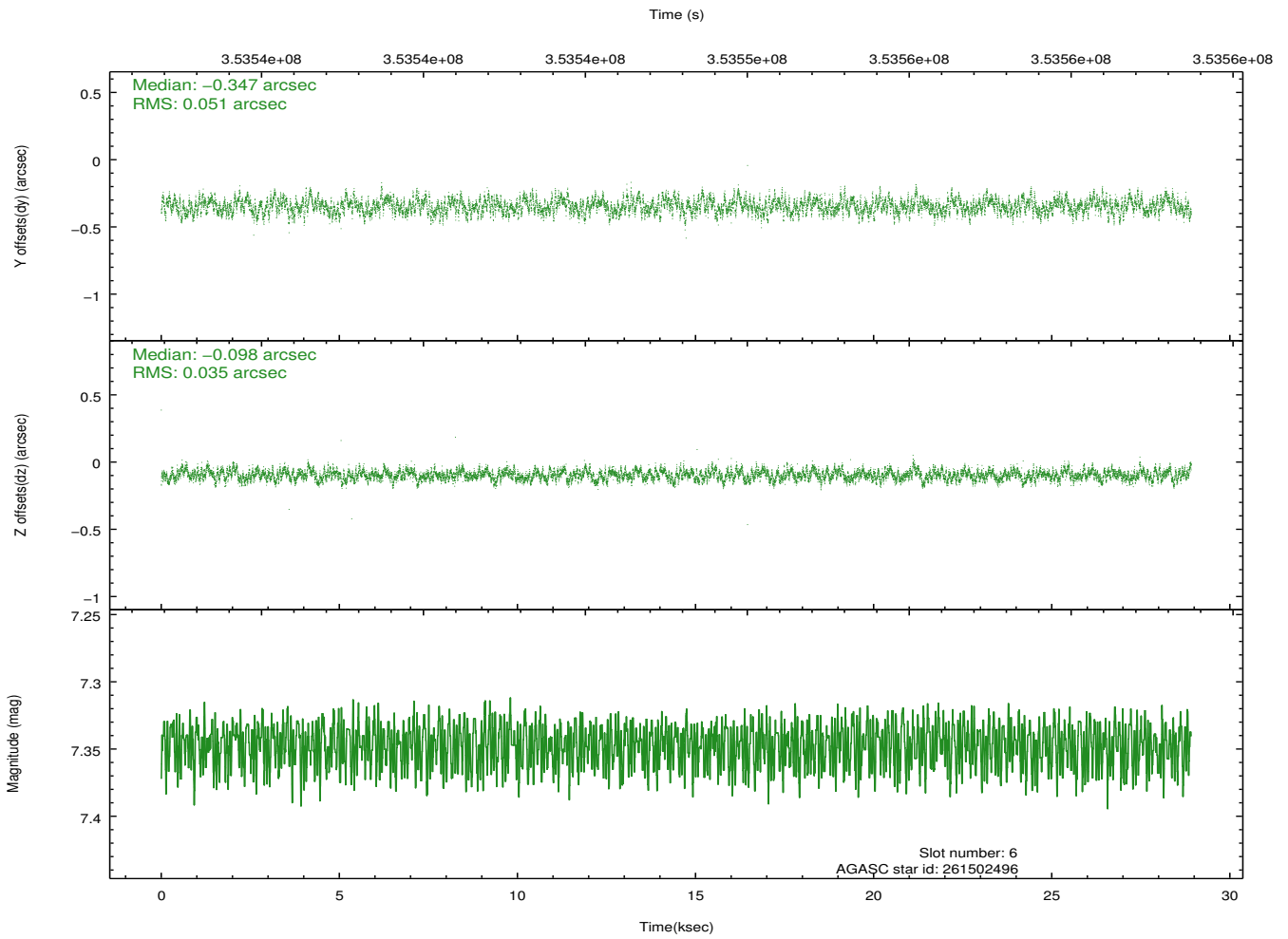
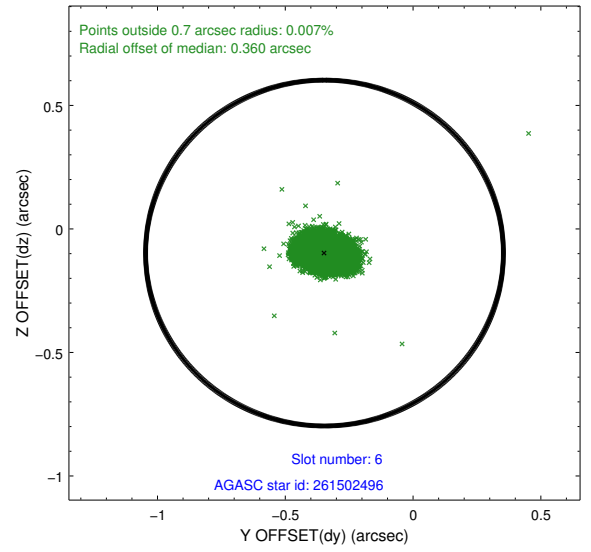
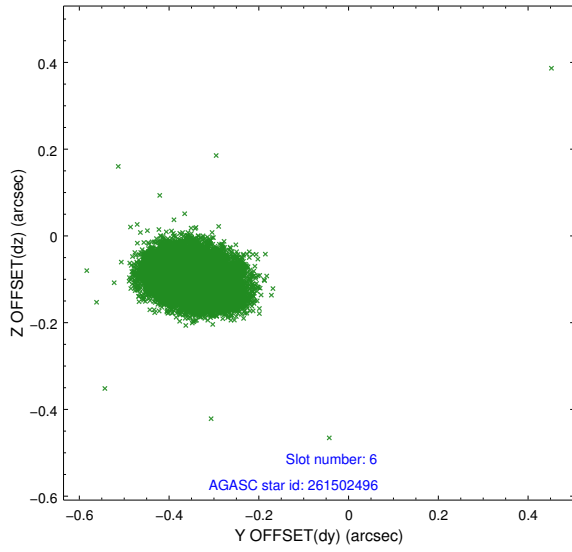
2.4.2 Slot 4



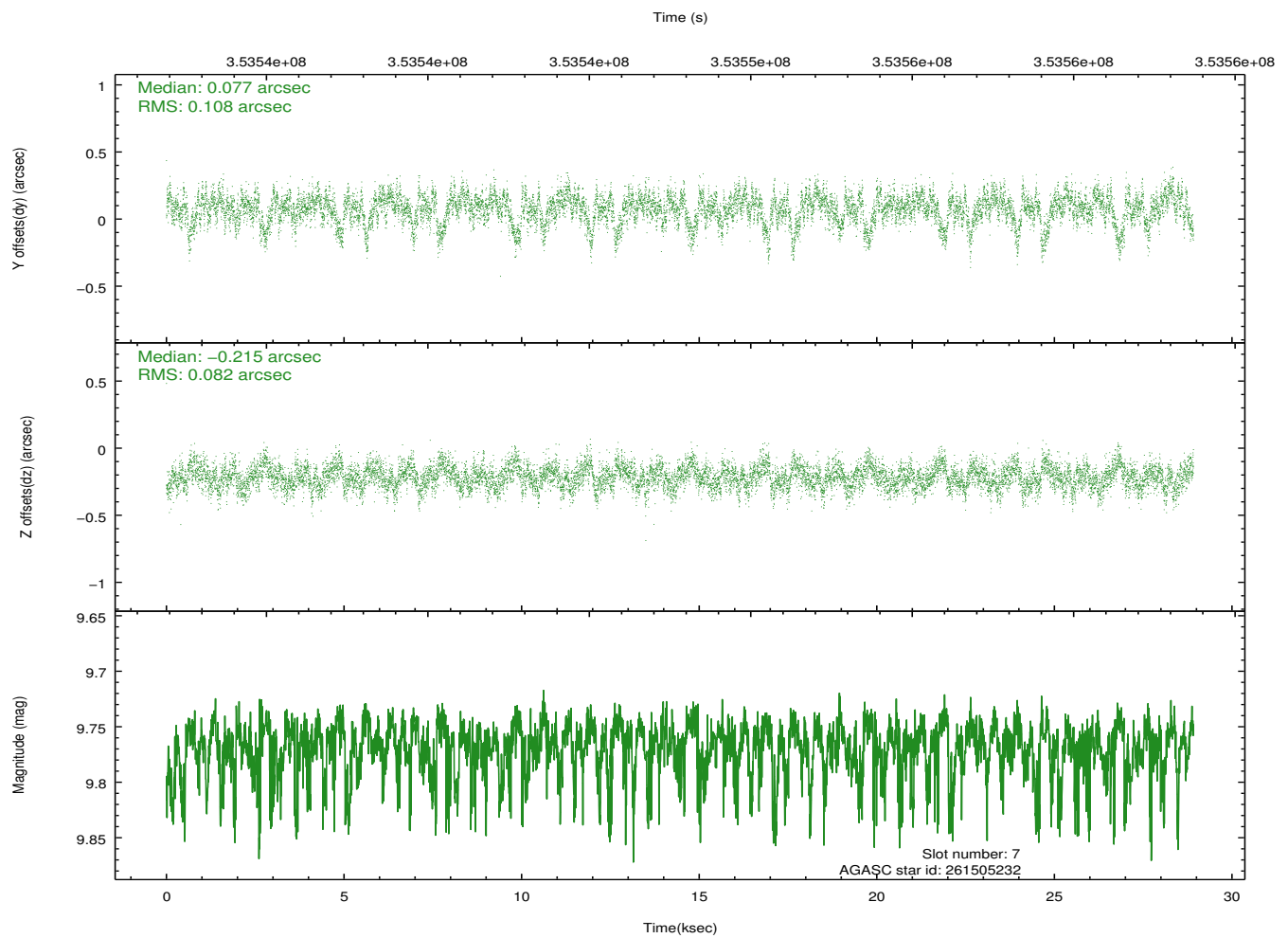
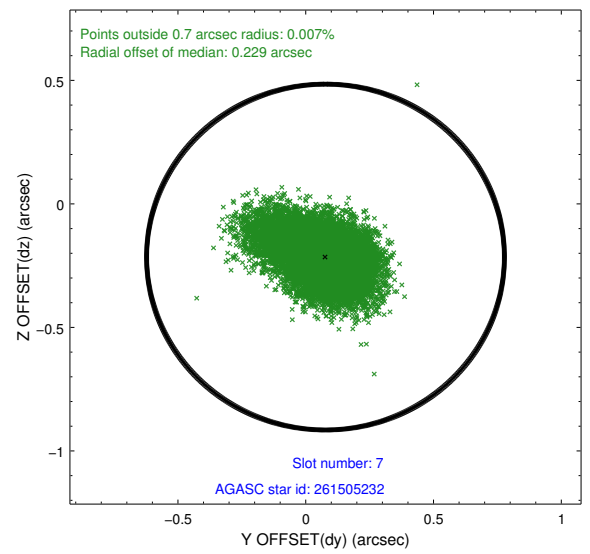
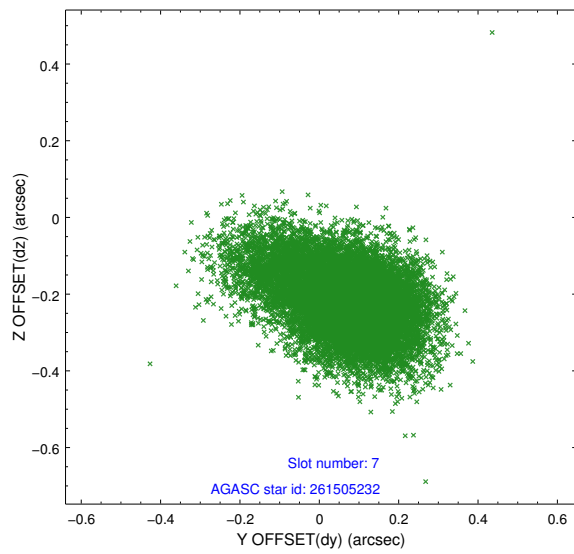
2.4.3 Slot 5



2.4.4 Slot 6

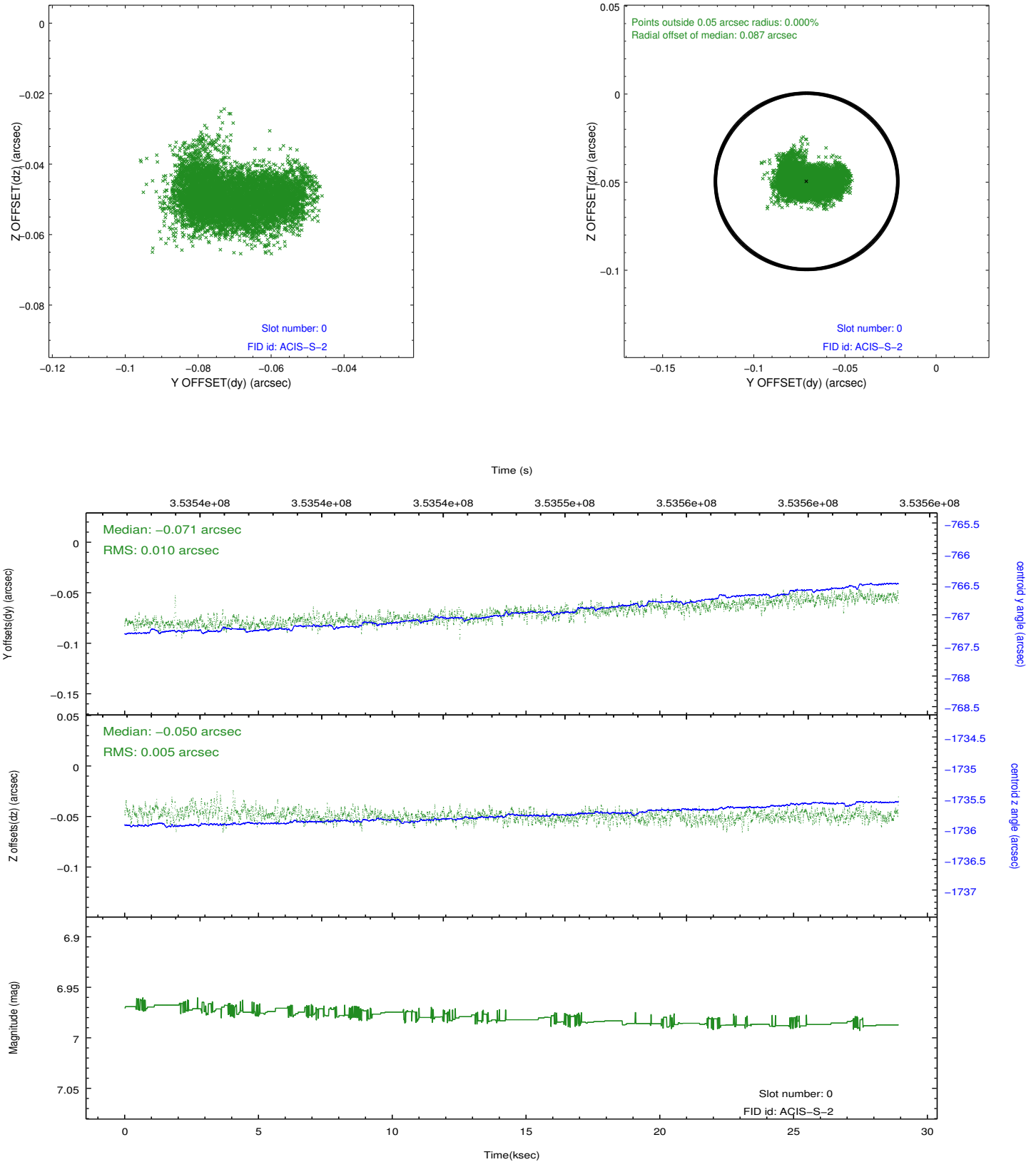


2.4.5 Slot 7

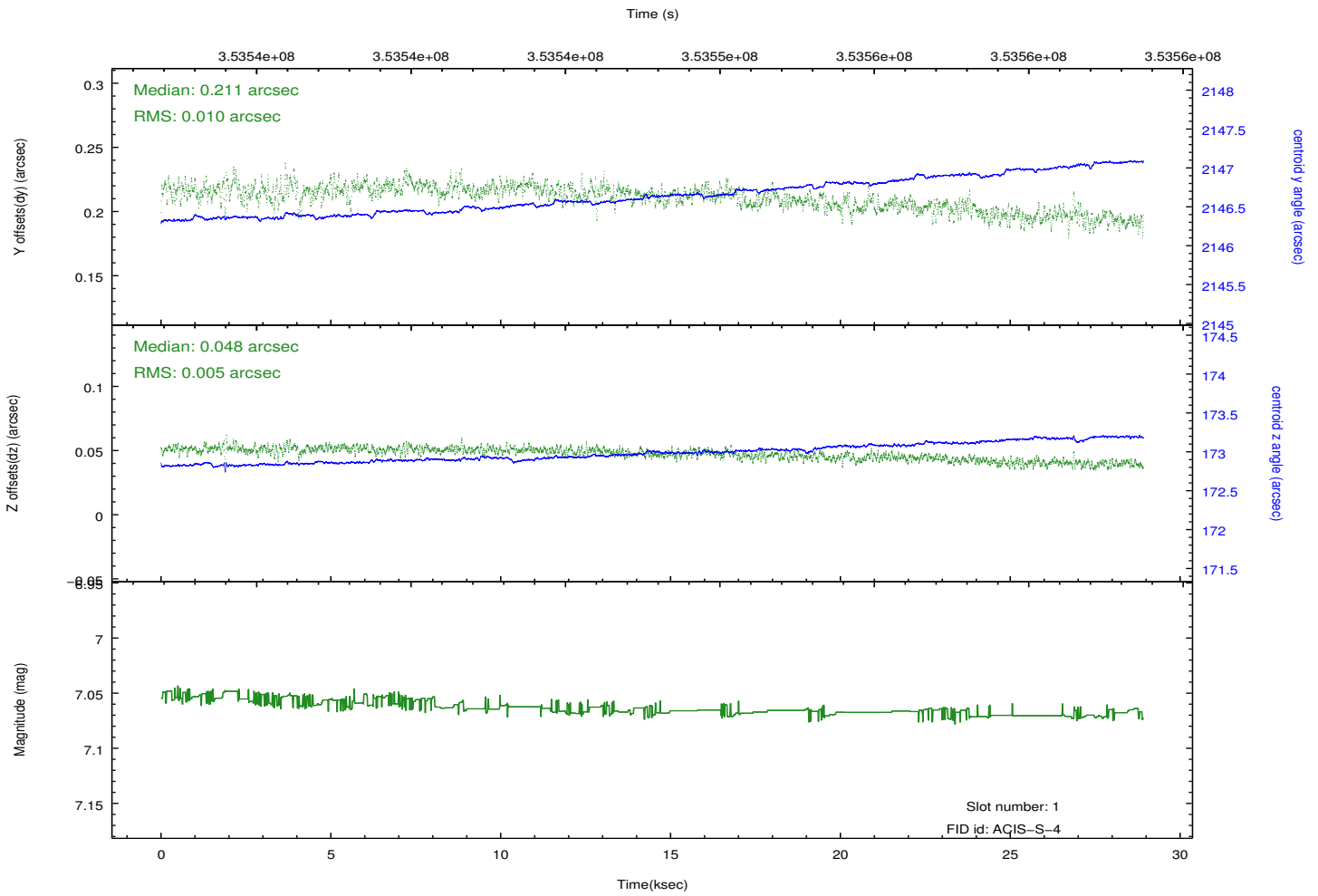
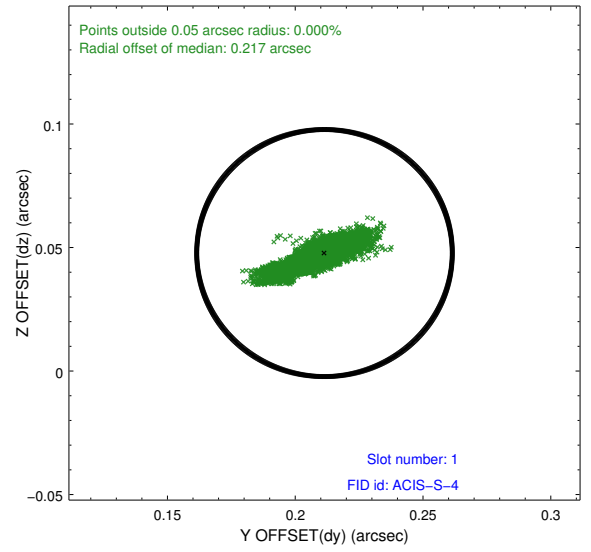
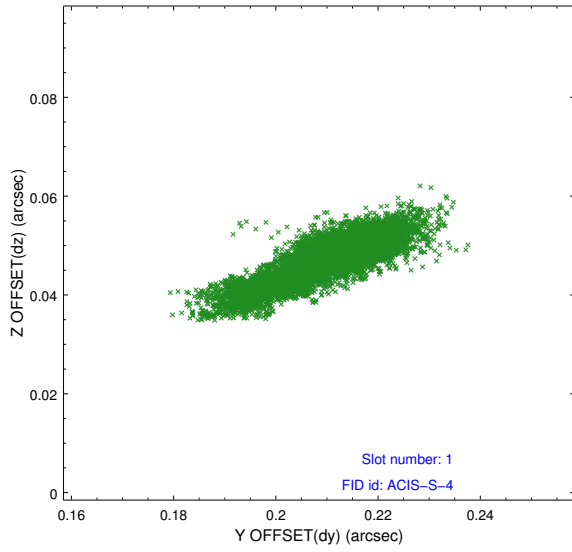


2.5 FID Slots

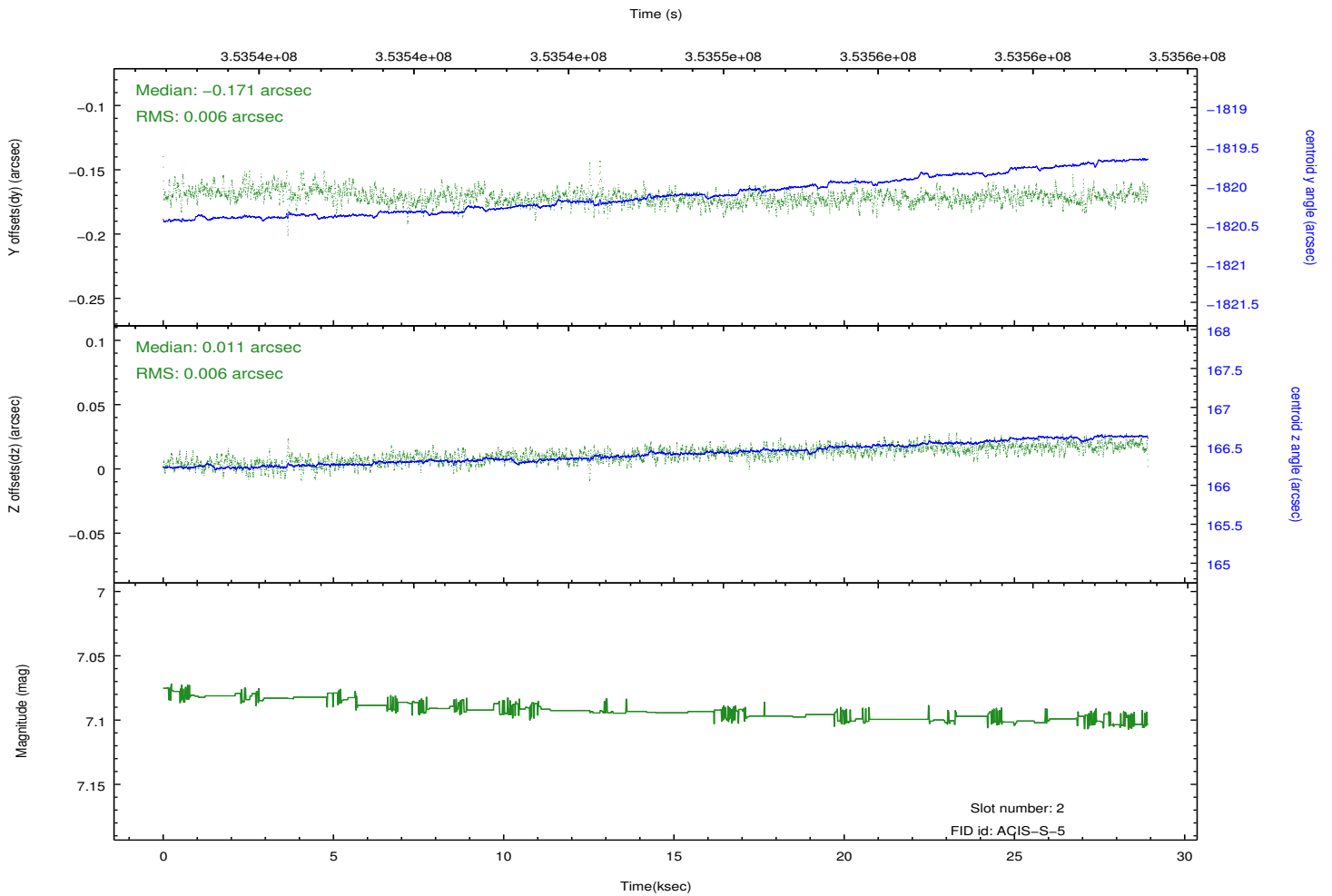
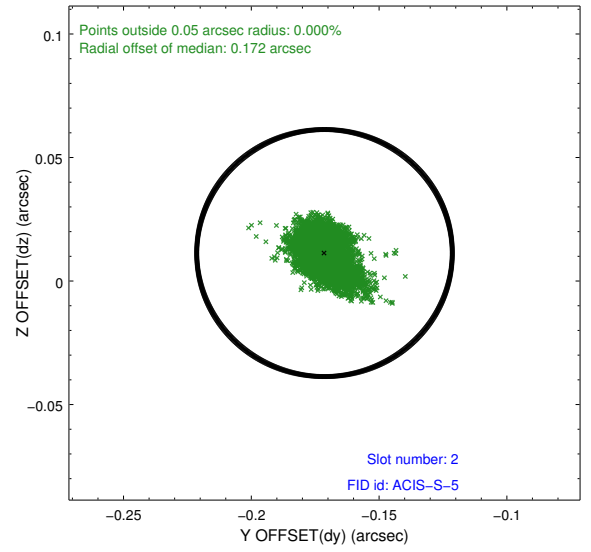
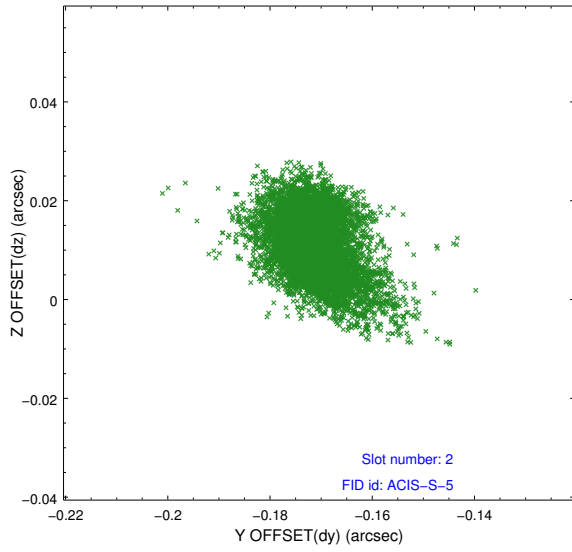
2.5.1 Slot 0



2.5.2 Slot 1



2.5.3 Slot 2



A Summary

A.1 Status

V&V Scientist	Beth Sundheim
V&V Date (YYYY-MM-DD)	2012.06.07
V&V Edition	1
V&V Disposition and Status	OK
V&V Charge Time	28.9106002

A.2 Comments

Window preference met.