

V&V Reference Report

L2 ASCDS Version : 8.4.5

Observation 11102 - L2 Version 2
Chandra X-Ray Center

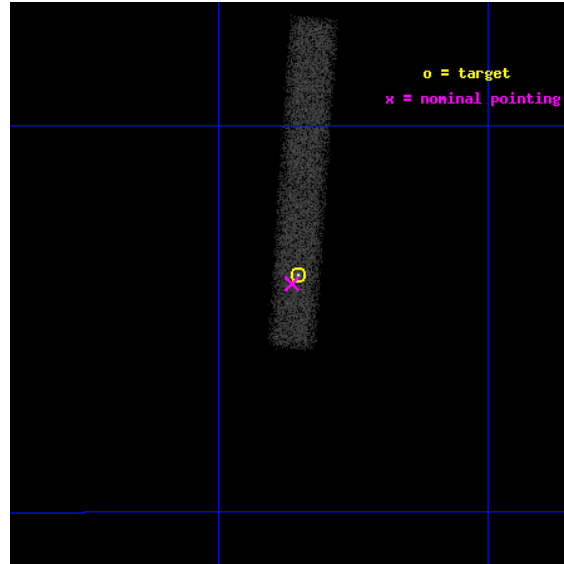
L2 Processing Date : Jun 16 2012

Contents

1	Front	2
2	OBI	3
2.1	OBI	3
2.1.1	Images	3
2.1.2	Bias	3
2.1.3	Parameters	4
2.1.4	Events	4
2.2	Compared Parameters	5
2.3	Aspect	6
2.4	Star Slots	9
2.4.1	Slot 3	9
2.4.2	Slot 4	10
2.4.3	Slot 5	11
2.4.4	Slot 6	12
2.4.5	Slot 7	13
2.5	FID Slots	14
2.5.1	Slot 0	14
2.5.2	Slot 1	15
2.5.3	Slot 2	16
A	Summary	17
A.1	Status	17
A.2	Comments	17

1 Front

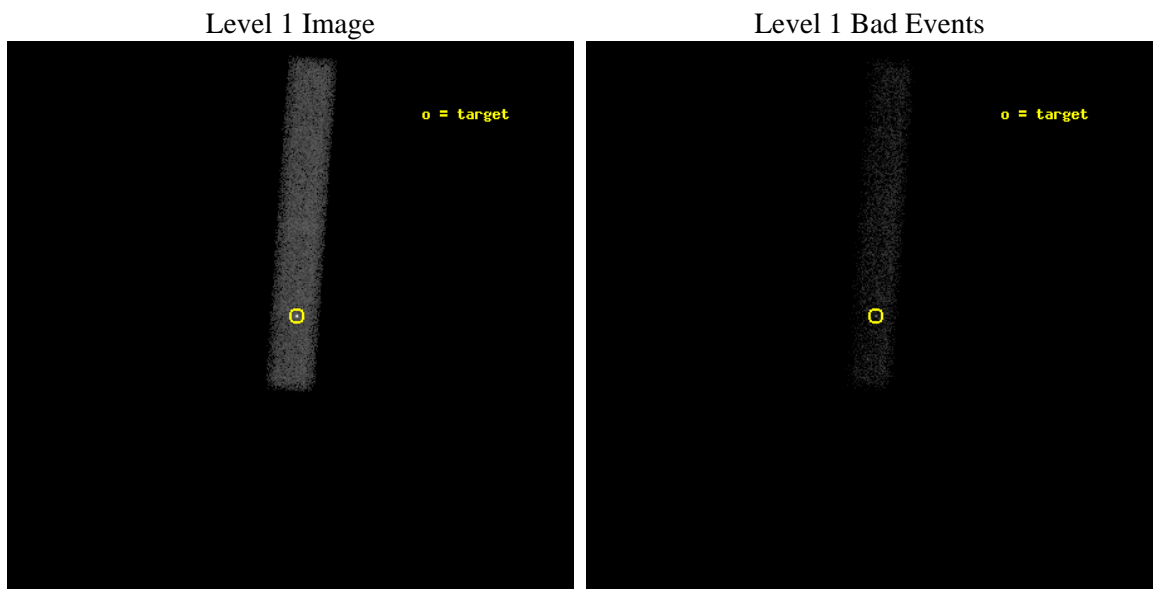
seq_num	501187	Sequence number
obs_id	11102	Observation id
title	Unveiling the nature of cyclic behavior in the period evolution of the Anomalous X ray Pulsar XTE j1810-197	Proposal title
observer	Dr. Federico Bernardini	Principal investigator
object	XTE J1810-197	Source name
dtcycle	0	
cycle	P	events from which exps? Prim/Second/Both
ra_targ	272.462917	Observer's specified target RA [deg]
dec_targ	-19.731083	Observer's specified target Dec [deg]
ra_nom	272.46590159088	Nominal RA [deg]
dec_nom	-19.735025688278	Nominal Dec [deg]
roll_nom	273.97439206343	Nominal Roll [deg]
revision	2	Processing version of data
ontime	25129.998502135	Sum of GTIs [s]
livetime	22791.582171354	Livetime [s]
ontime7	25129.998502135	Sum of GTIs [s]
l2events	21811	Number of level 2 events



2 OBI

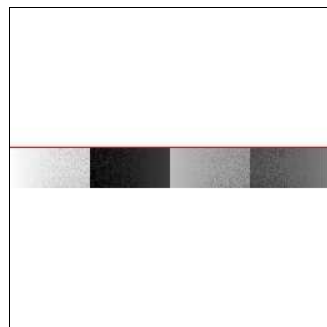
2.1 OBI

2.1.1 Images



2.1.2 Bias

Chip 7



2.1.3 Parameters

obi_num	0	Obi number	sched_exp_time	25000.000000	[s] Scheduled observation exposure time
ascdsver	8.4.5	Processing system revision	ontime	25129.998502135	Sum of GTIs [s]
caldbver	4.4.10	 	ontime7	25129.998502135	Sum of GTIs [s]
date	2012-06-16T01:56:27	Date and time of file creation	l1events	41055	Number of level 1 events
revision	2	Processing version of data			

2.1.4 Events

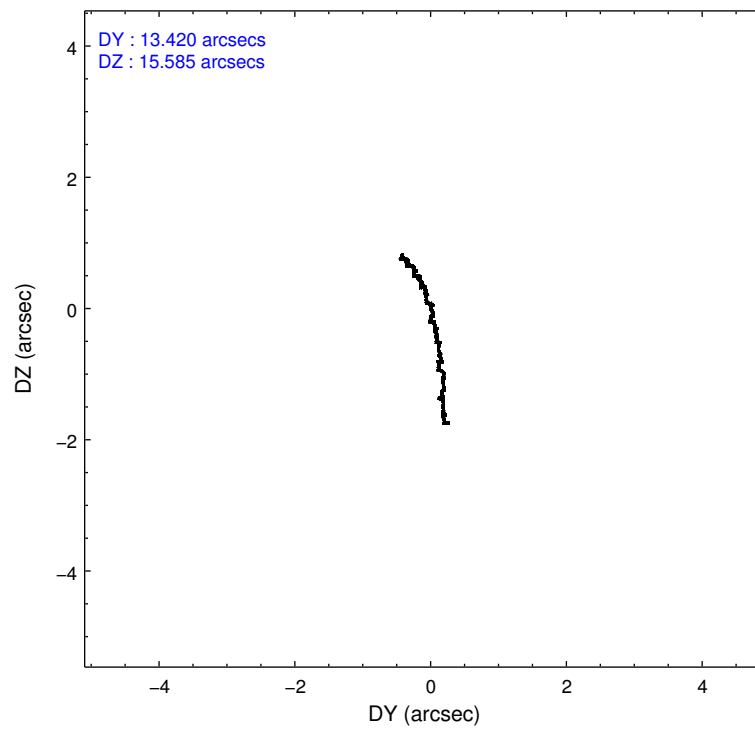
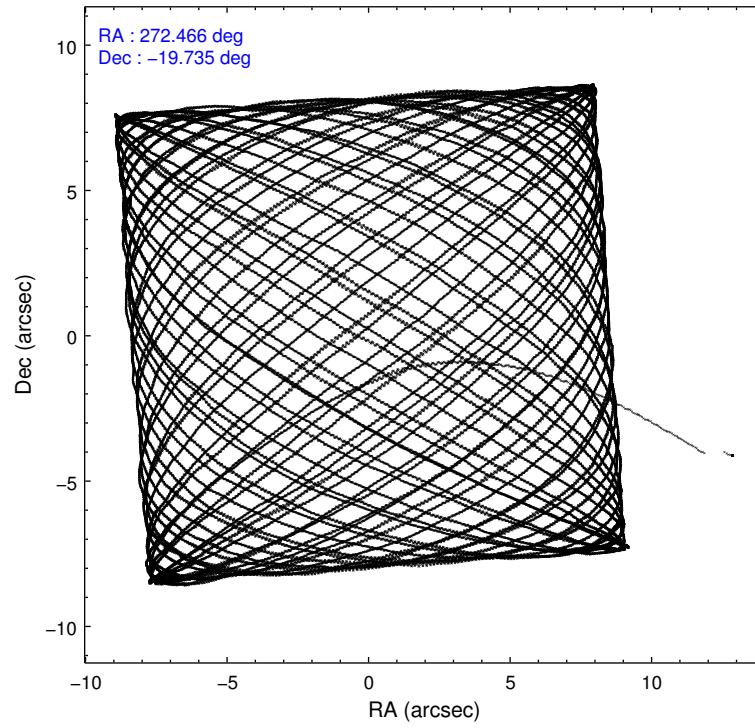
	ccd 7
level 1 events	41055
rejected events	18427
rejected %	44%

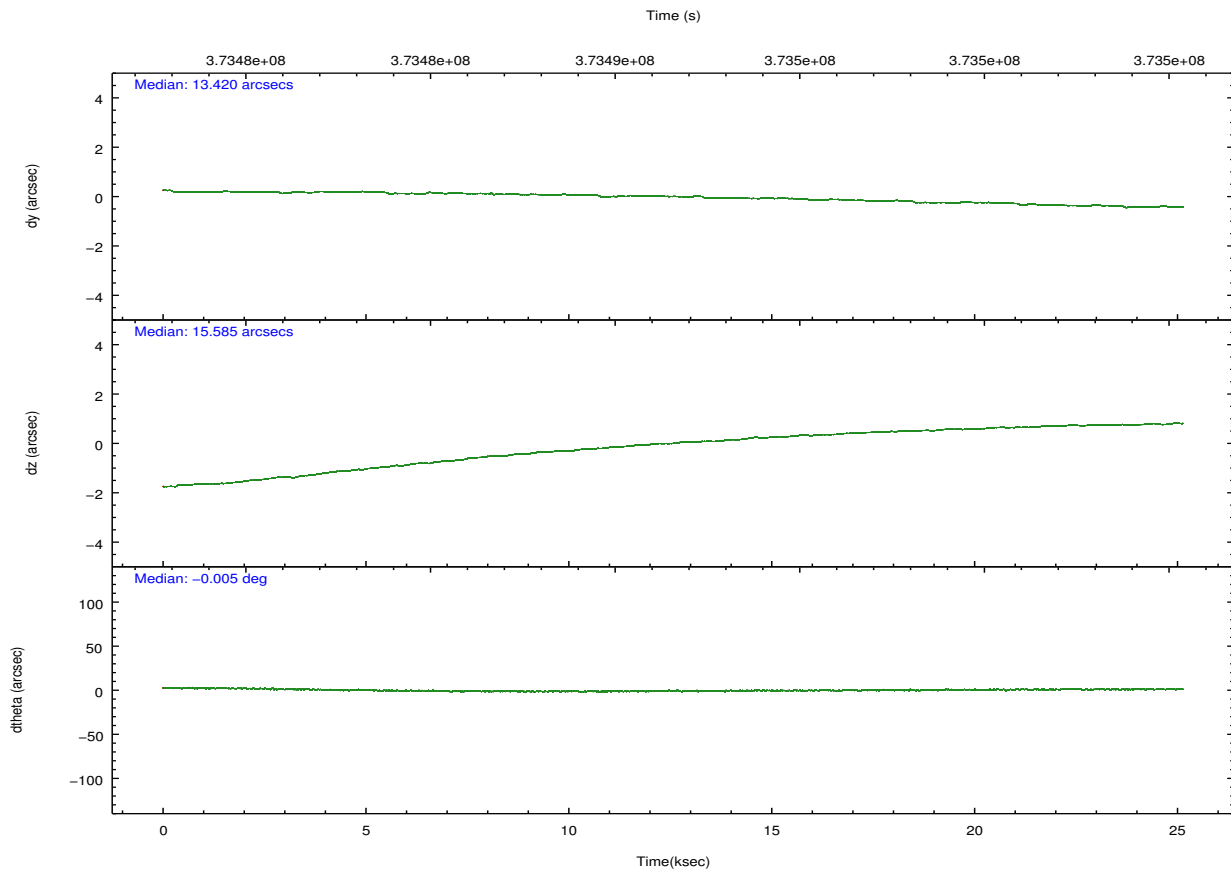
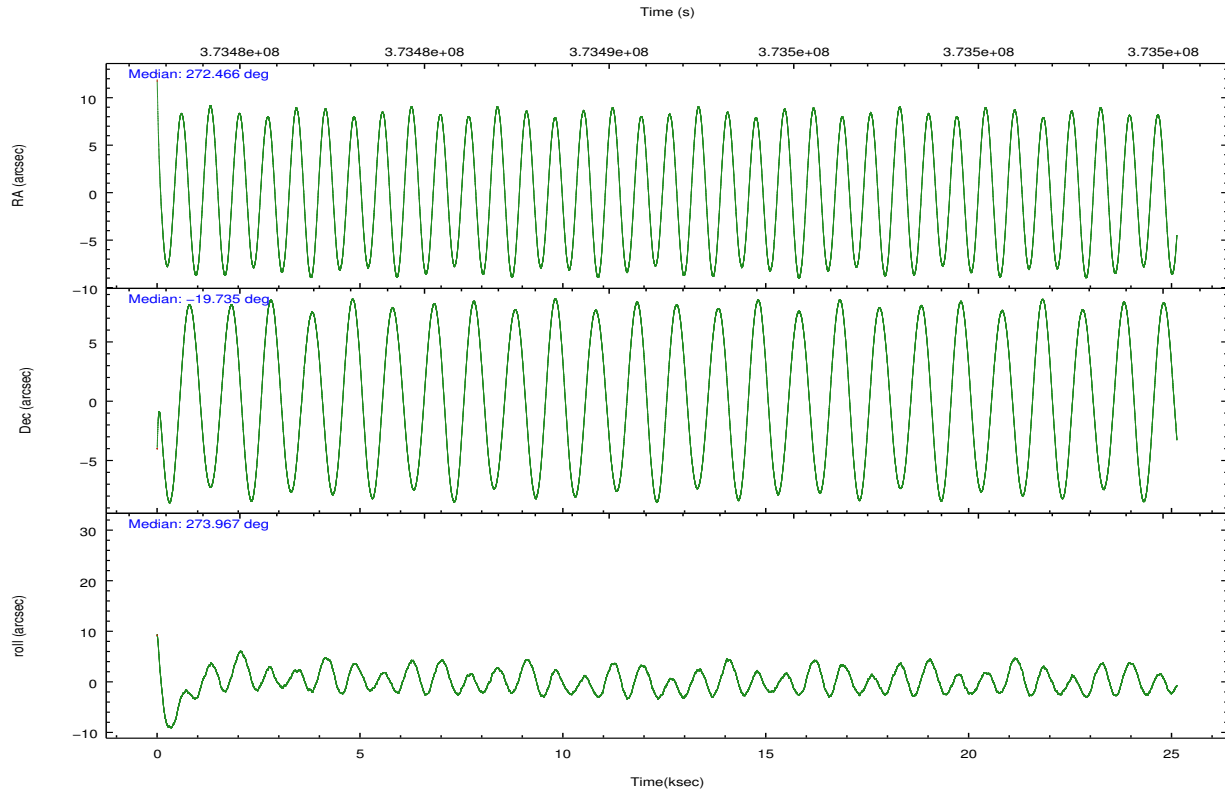
	ccd 7
grade 0 events	3436
	8%
grade 1 events	71
	0%
grade 2 events	4911
	11%
grade 3 events	3155
	7%
grade 4 events	3101
	7%
grade 5 events	3770
	9%
grade 6 events	8860
	21%
grade 7 events	13751
	33%

2.2 Compared Parameters

Parameter	Planned	Actual	Parameter	Planned	Actual
Instrument	ACIS	ACIS	Obspar format version number	7	7
Detector	ACIS-7	ACIS-7	Obspar file type	PREDICTED	ACTUAL
Grating	NONE	NONE	Obspar update status	NONE	UPDATED
Data mode	VFAINT	VFAINT	Number of optional ACIS chips dropped	0	0
Observation mode	POINTING	POINTING	On-chip summing requested	N	N
[deg] Pointing RA	272.449371	272.4659015908824	Subarray requested	CUSTOM	1/8
[deg] Pointing Dec	-19.712558	-19.735025688278	Subarray start row	449	449
[deg] Pointing Roll	273.812184	273.9743920634259	Subarray row count	128	128
[mm] SIM focus pos	-0.684267	-0.6828225247311905	Alternating exposures requested	N	N
[mm] SIM defocus	0	0.001444936568705701	[s] Primary exposure time	0.000000	0.4
[mm] SIM translation stage pos	-190.132523	-190.145094680475			
[mm] SIM translation stage offset	0	0.01257209746719923			
[s] Observation start time (MET)	373479142.184000	373477870.07363			
Observation start date	2009-11-01T16:11:16	2009-11-01T15:51:10			
[s] Observation end time (MET)	373504142.184000	373504393.48747			
Observation end date	2009-11-01T23:07:56	2009-11-01T23:13:13			
Read mode	TIMED	TIMED			

2.3 Aspect



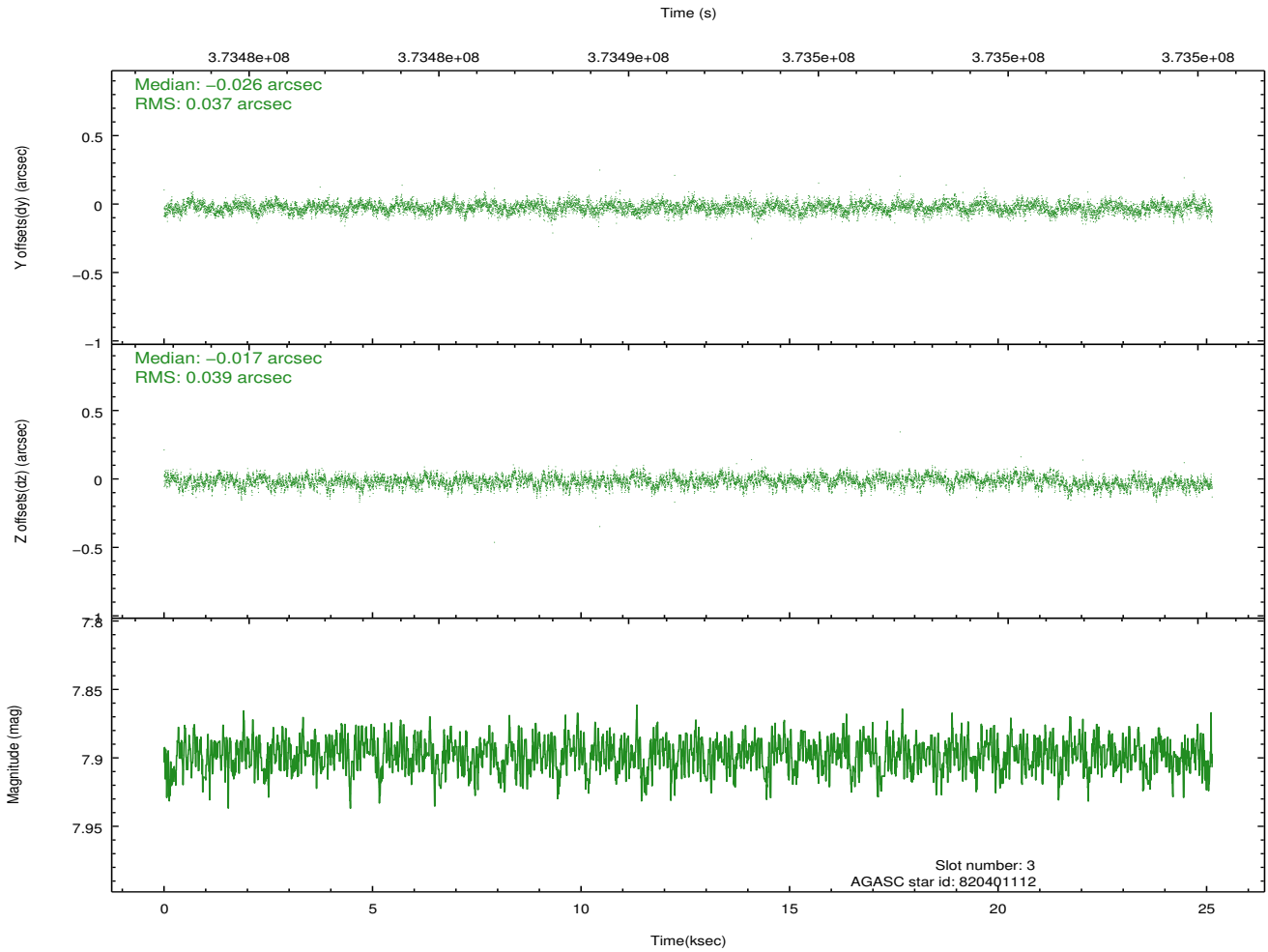
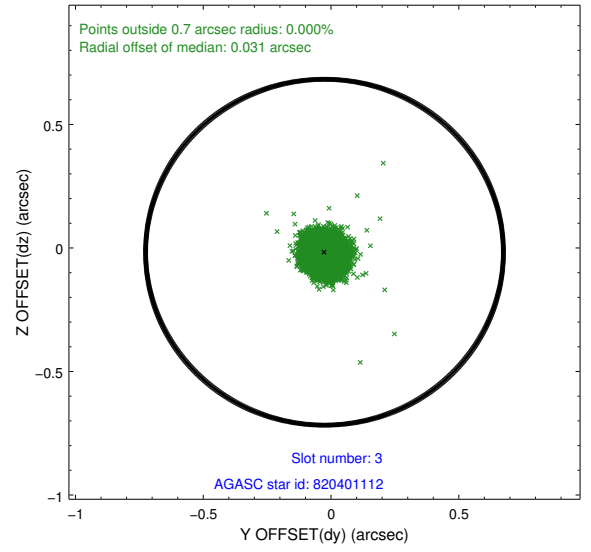
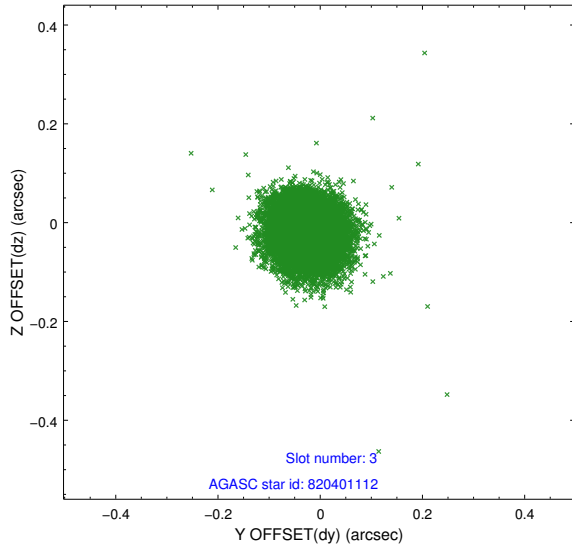


Slot Statistics

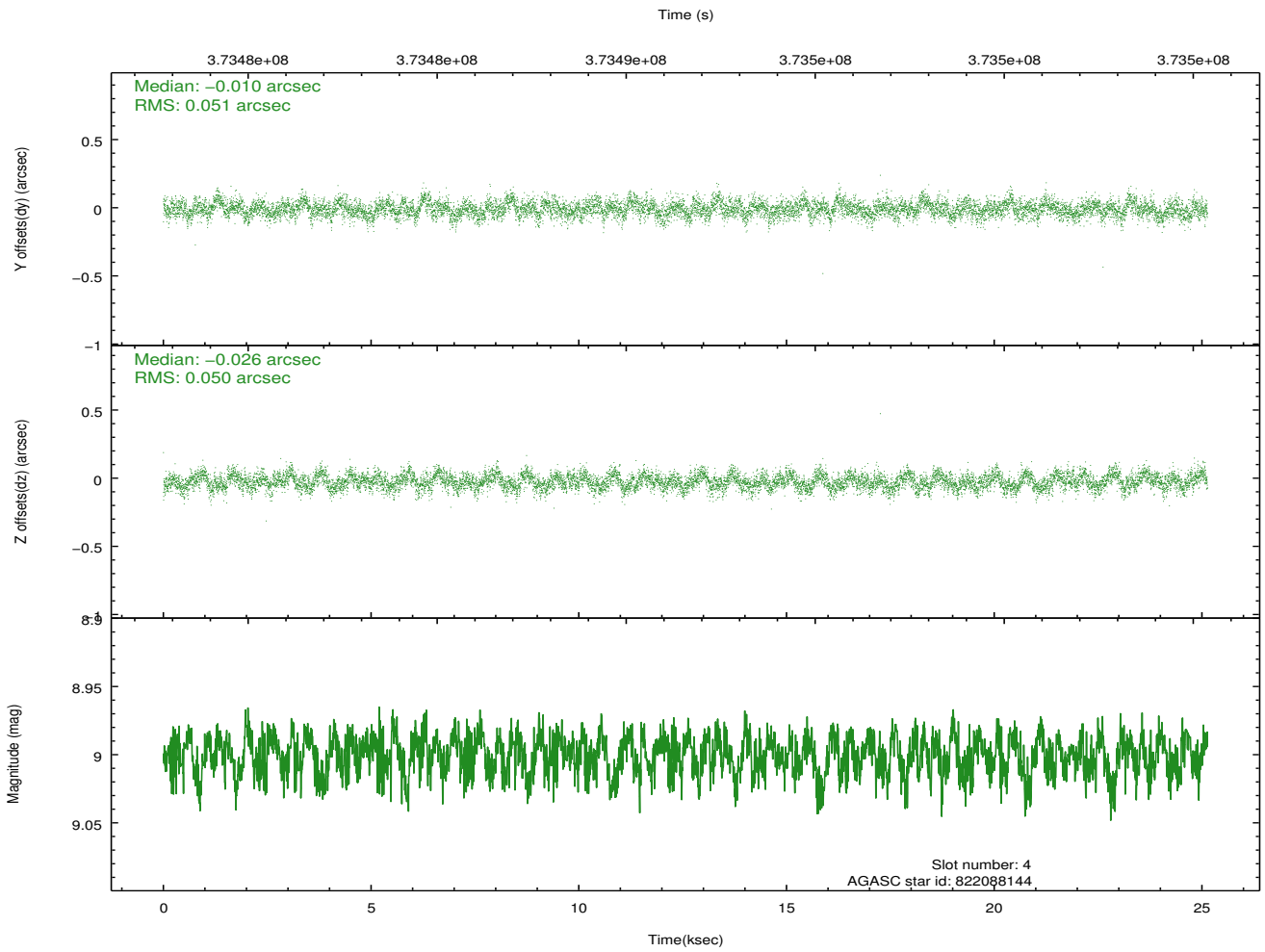
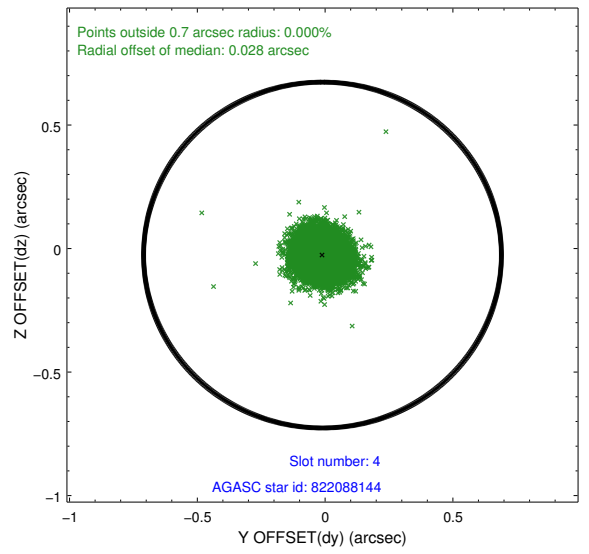
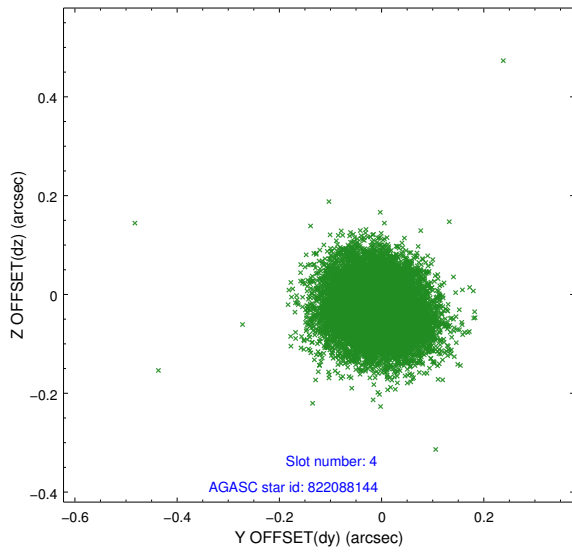
slot	status	id	mag	n_pts	med_dy	med_dz	dr1	dr2	ra	dec	mean_y	mean_z
0	FID	ACIS-S-2	6.90	6130	-0.050	-0.025	0.017	0.026	0.000000	0.000000	-766.33	-1736.73
1	FID	ACIS-S-4	6.99	6129	0.183	0.032	0.012	0.021	0.000000	0.000000	2147.11	171.73
2	FID	ACIS-S-5	7.01	6130	-0.163	0.001	0.012	0.024	0.000000	0.000000	-1819.15	165.46
3	GUIDE	820401112	7.90	12257	-0.026	-0.017	0.056	0.091	271.884761	-19.293988	-1627.56	-1814.08
4	GUIDE	822088144	9.00	12250	-0.010	-0.026	0.076	0.123	272.849323	-19.208046	-1720.43	1477.39
5	GUIDE	822096760	8.07	12255	-0.011	-0.003	0.053	0.086	272.830526	-19.438690	-896.44	1356.97
6	GUIDE	822102416	7.50	12259	0.142	-0.084	0.062	0.103	272.173216	-20.087156	1284.65	-1020.73
7	GUIDE	822085152	9.01	12254	-0.097	0.132	0.085	0.138	272.974056	-19.057083	-2233.20	1938.38

2.4 Star Slots

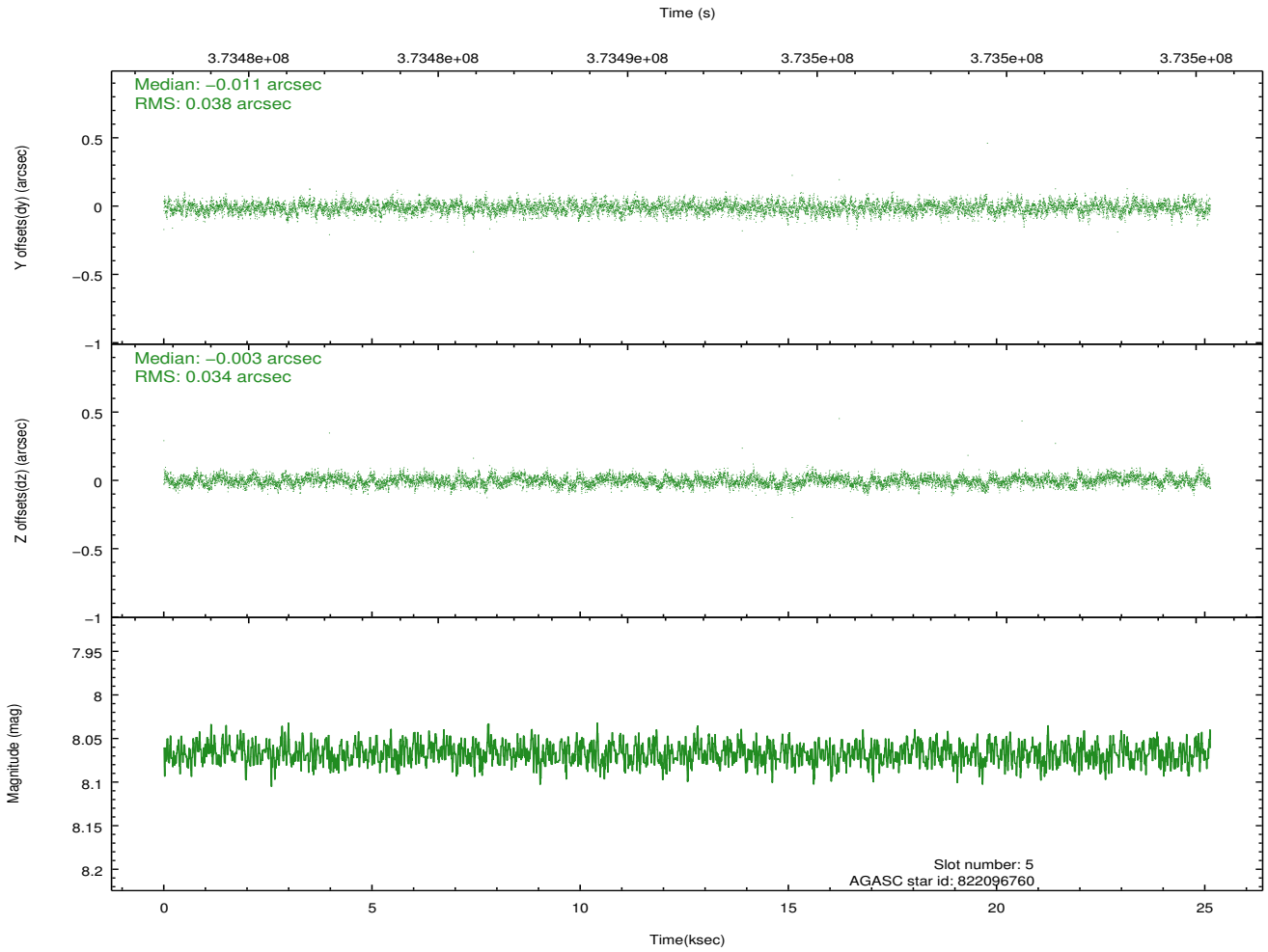
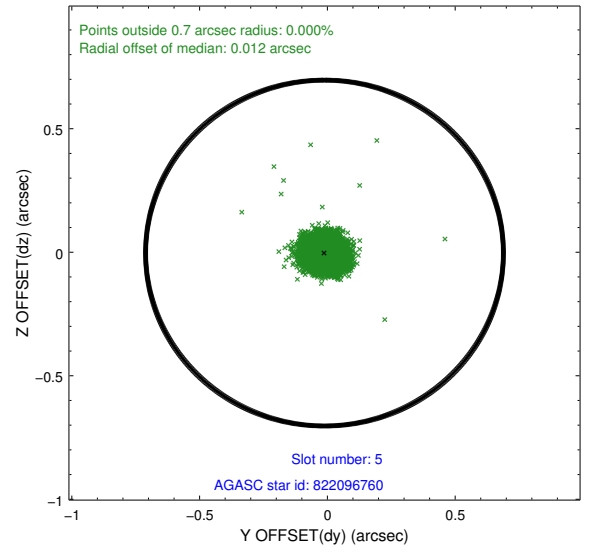
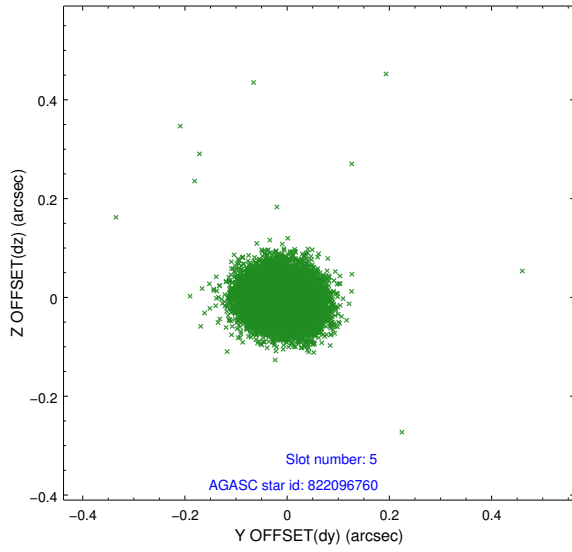
2.4.1 Slot 3



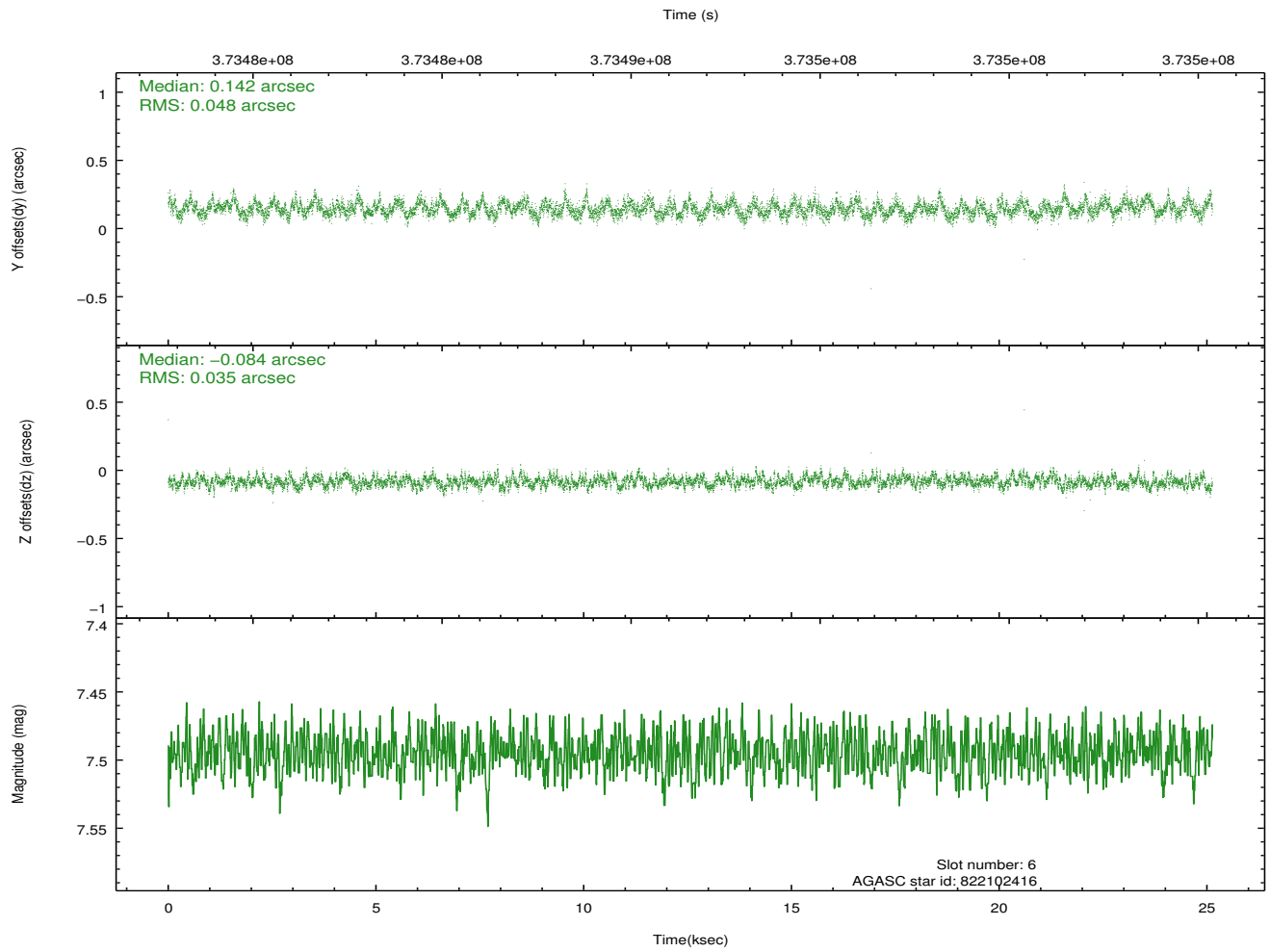
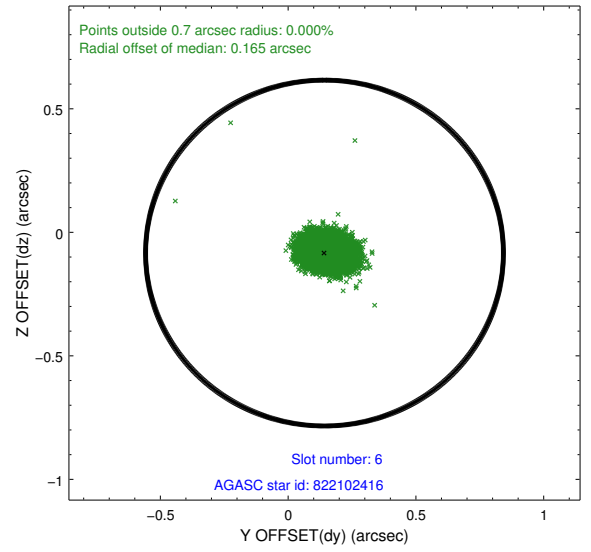
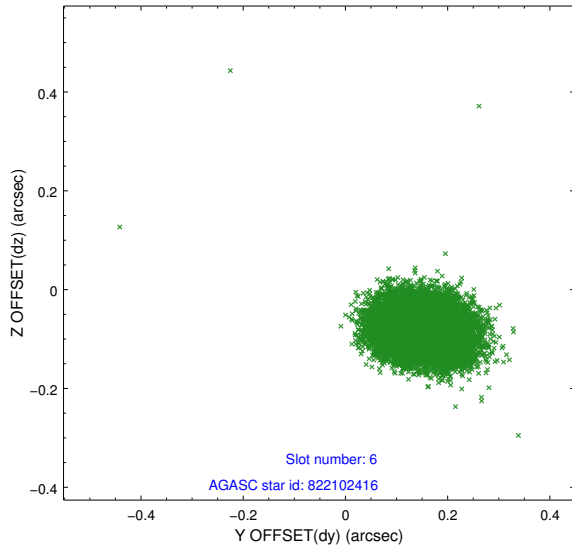
2.4.2 Slot 4



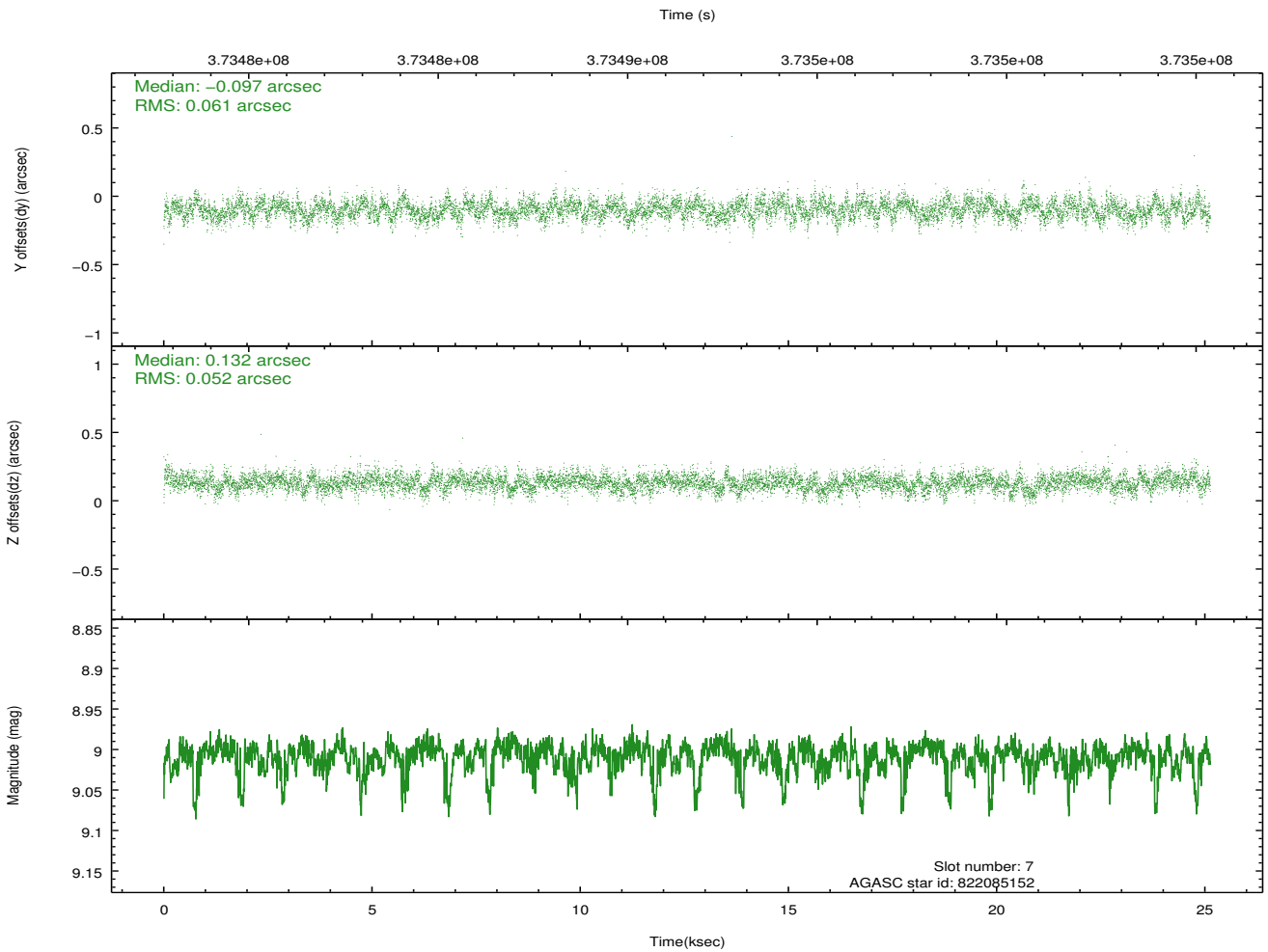
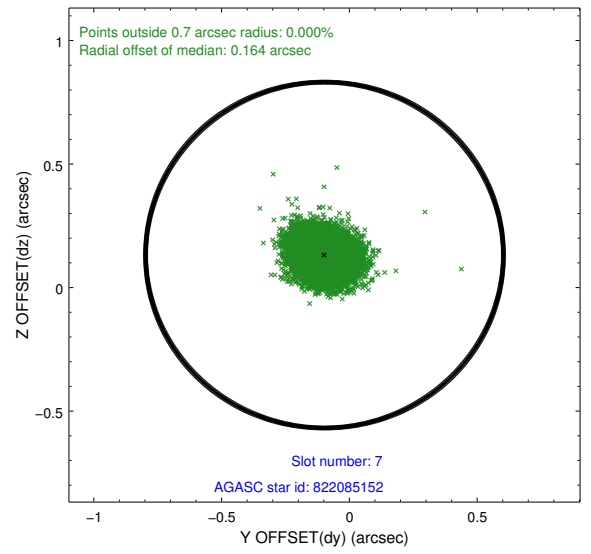
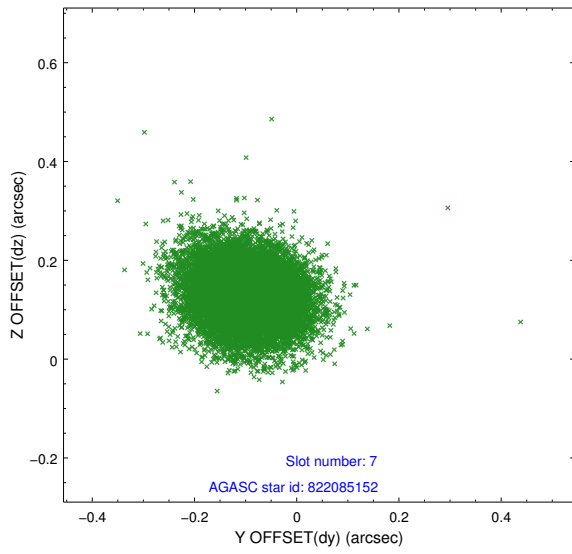
2.4.3 Slot 5



2.4.4 Slot 6

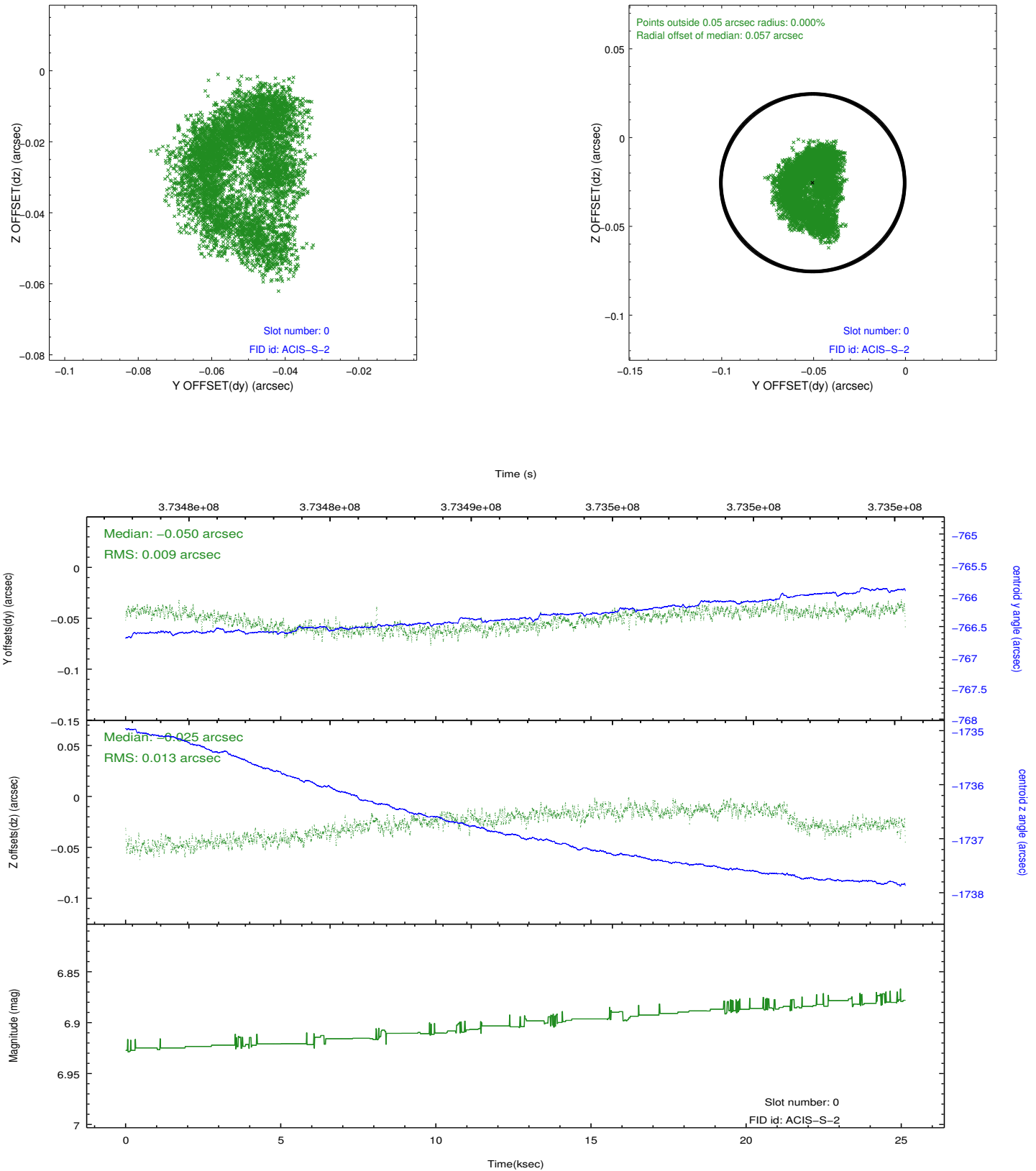


2.4.5 Slot 7

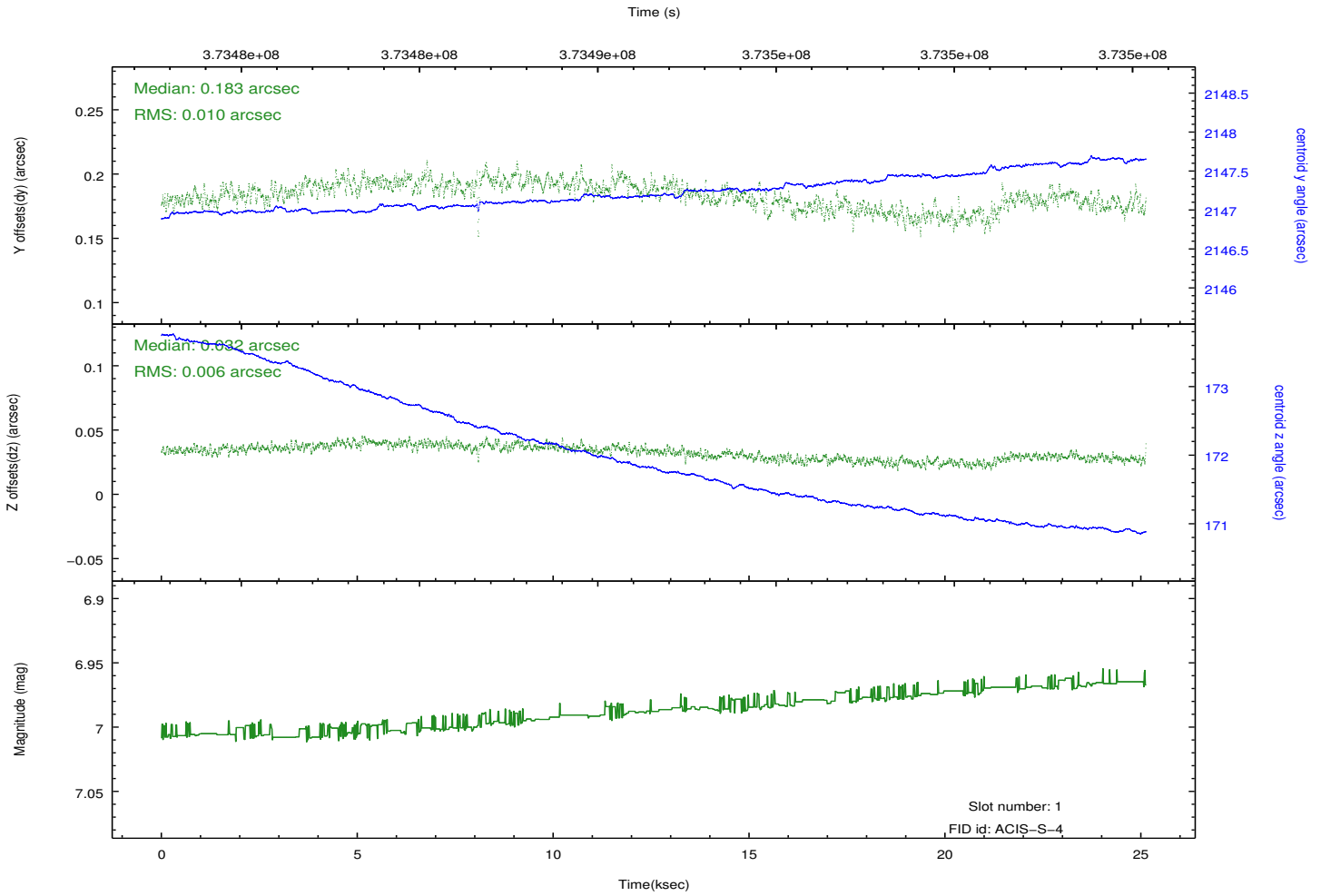
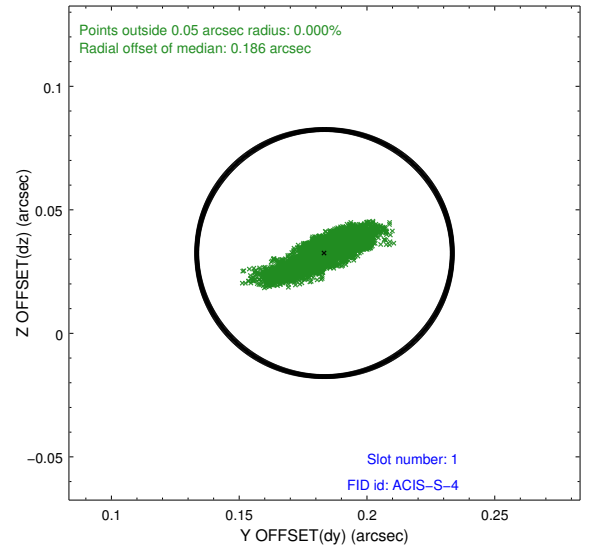
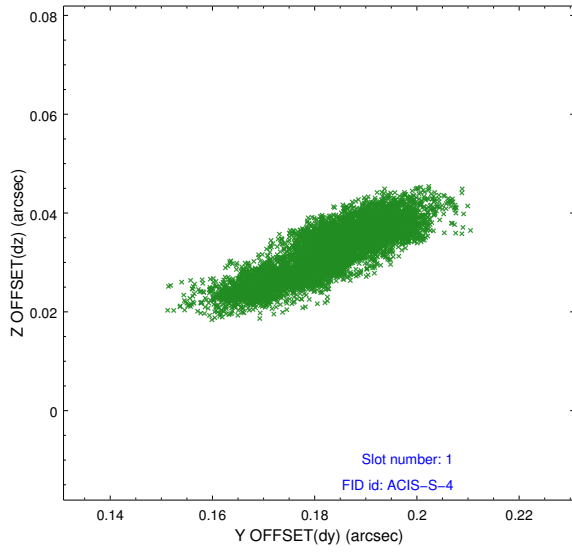


2.5 FID Slots

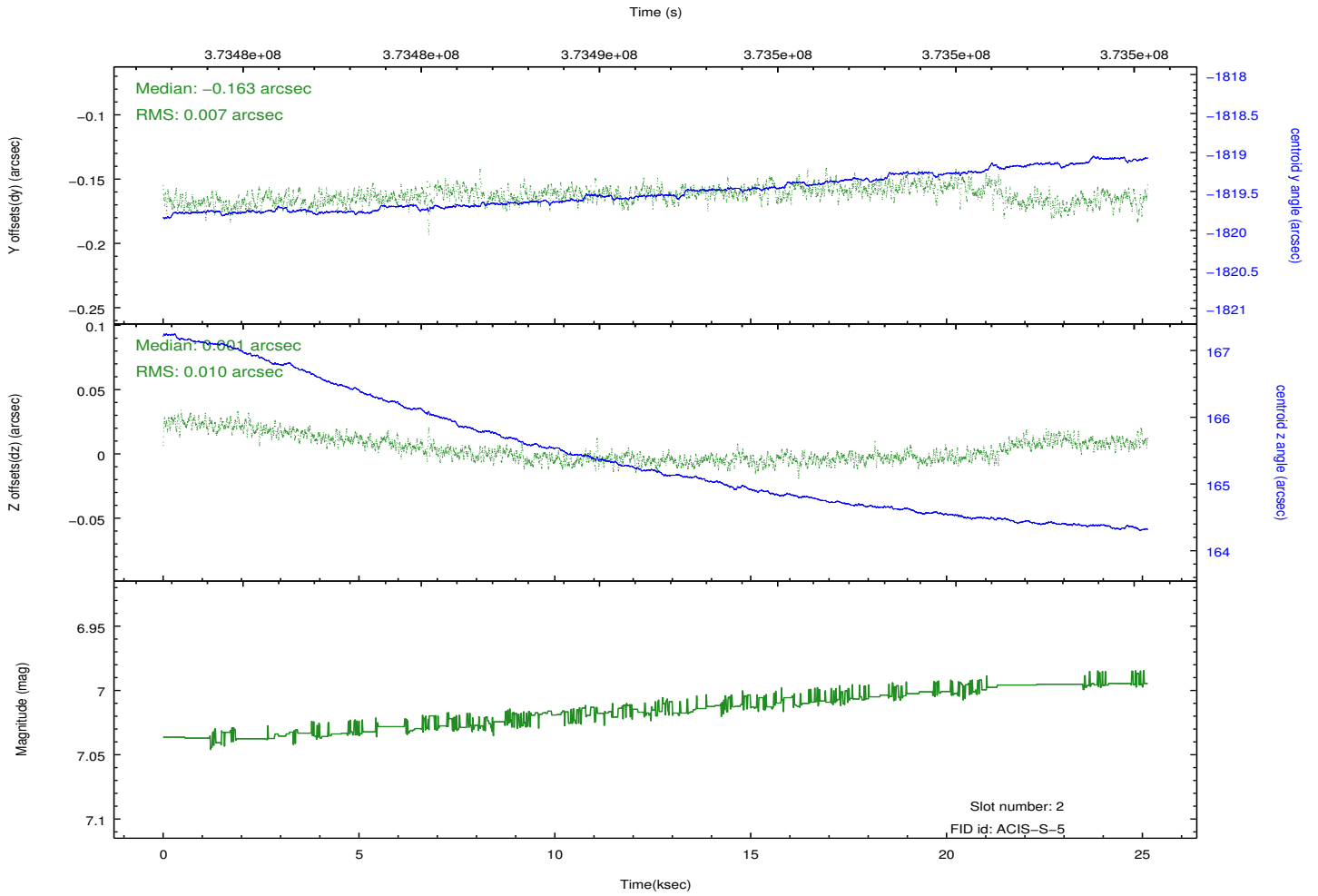
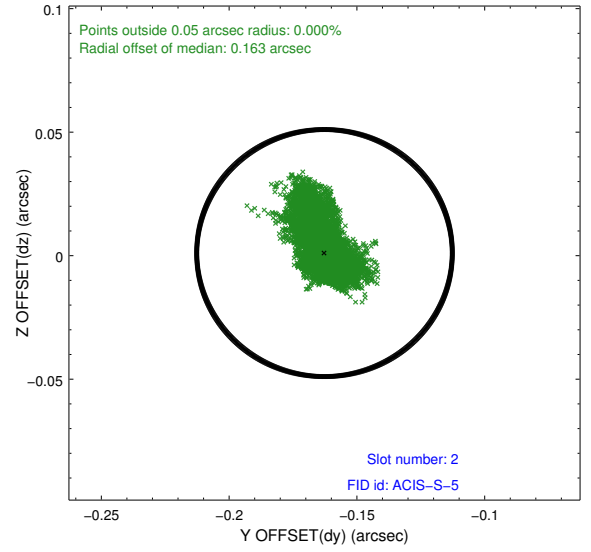
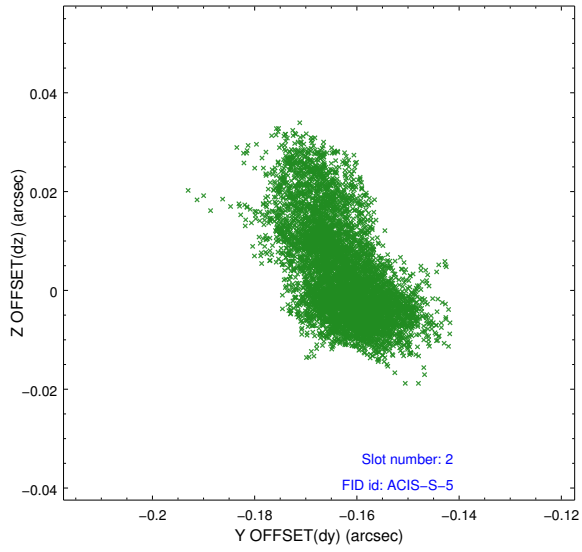
2.5.1 Slot 0



2.5.2 Slot 1



2.5.3 Slot 2



A Summary

A.1 Status

V&V Scientist	Jen Lauer
V&V Date (YYYY-MM-DD)	2012.06.20
V&V Edition	1
V&V Disposition and Status	OK
V&V Charge Time	25.129998502135

A.2 Comments