

# V&V Reference Report

## L2 ASCDS Version : 8.4.5

Observation 11492 - L2 Version 2  
Chandra X-Ray Center

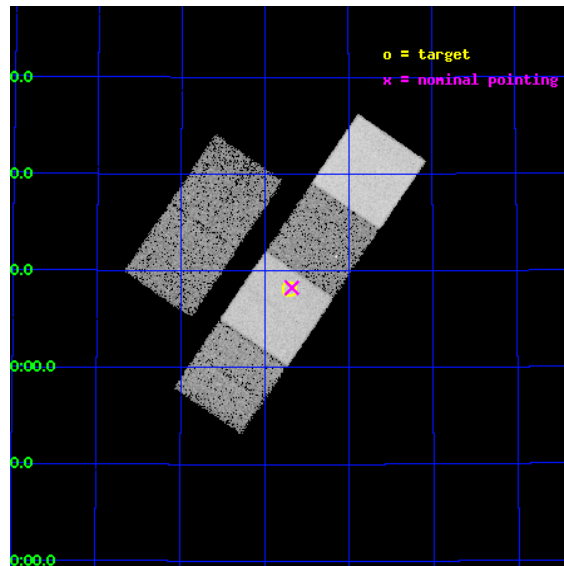
L2 Processing Date : Jun 18 2012

## Contents

<b>1</b>	<b>Front</b>	<b>2</b>
<b>2</b>	<b>OBI</b>	<b>3</b>
2.1	OBI . . . . .	3
2.1.1	Images . . . . .	3
2.1.2	Bias . . . . .	3
2.1.3	Parameters . . . . .	4
2.1.4	Events . . . . .	4
2.2	Compared Parameters . . . . .	5
2.3	Aspect . . . . .	6
2.4	Star Slots . . . . .	9
2.4.1	Slot 3 . . . . .	9
2.4.2	Slot 4 . . . . .	10
2.4.3	Slot 5 . . . . .	11
2.4.4	Slot 6 . . . . .	12
2.4.5	Slot 7 . . . . .	13
2.5	FID Slots . . . . .	14
2.5.1	Slot 0 . . . . .	14
2.5.2	Slot 1 . . . . .	15
2.5.3	Slot 2 . . . . .	16
<b>A</b>	<b>Summary</b>	<b>17</b>
A.1	Status . . . . .	17
A.2	Comments . . . . .	17

# 1 Front

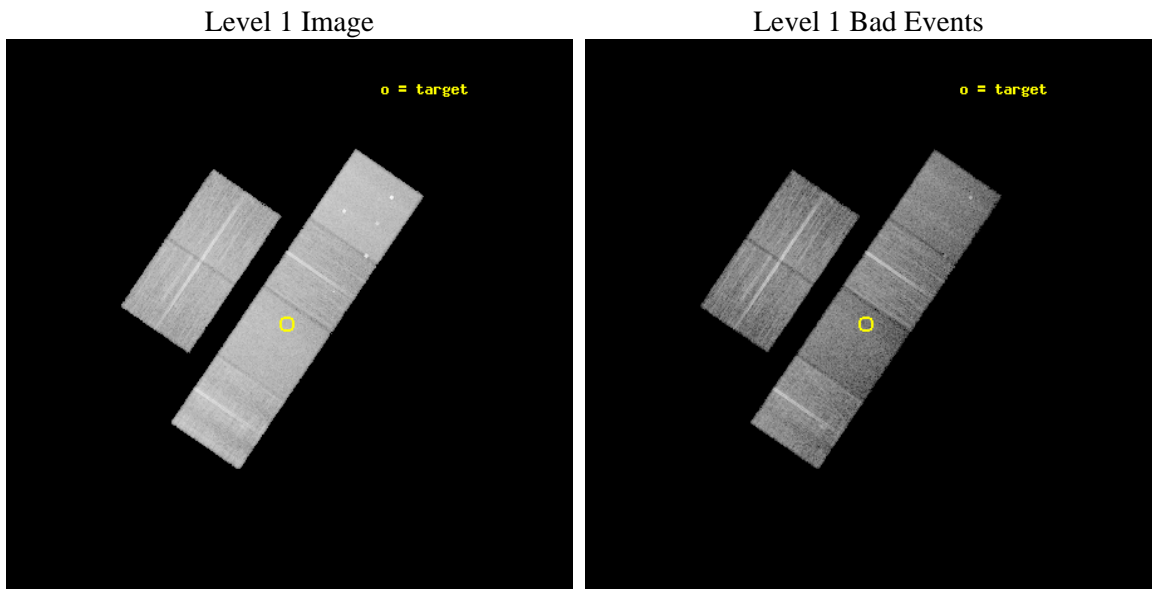
seq_num	702078	Sequence number
obs_id	11492	Observation id
title	Hunting for Intrinsically X-ray Weak Quasars: The Case of PHL 1811 Analogs	Proposal title
observer	Prof. William Brandt	Principal investigator
object	SDSS J0848+5408	Source name
dtcycle	0	&#160
cycle	P	events from which exps? Prim/Second/Both
ra_targ	132.1775	Observer's specified target RA [deg]
dec_targ	54.135611	Observer's specified target Dec [deg]
ra_nom	132.16988626597	Nominal RA [deg]
dec_nom	54.137563810142	Nominal Dec [deg]
roll_nom	124.27291402197	Nominal Roll [deg]
revision	2	Processing version of data
ontime	13241.599950731	Sum of GTIs [s]
livetime	13073.92683902	Livetime [s]
ontime2	13238.358950436	Sum of GTIs [s]
ontime3	13241.599950731	Sum of GTIs [s]
ontime5	13241.599950731	Sum of GTIs [s]
ontime6	13241.599950731	Sum of GTIs [s]
ontime7	13241.599950731	Sum of GTIs [s]
ontime8	13241.599950731	Sum of GTIs [s]
l2events	177300	Number of level 2 events



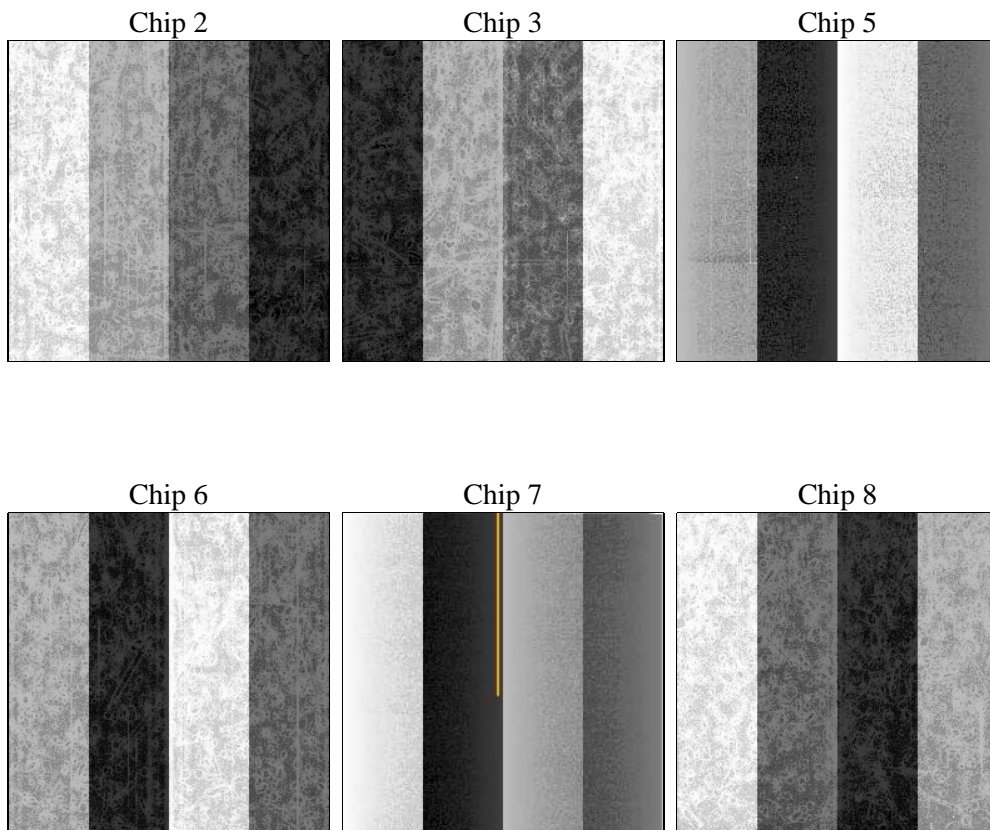
## 2 OBI

### 2.1 OBI

#### 2.1.1 Images



#### 2.1.2 Bias



### 2.1.3 Parameters

obi_num	0	Obi number	sched_exp_time	13200.000000	[s] Scheduled observation exposure time
ascdsver	8.4.5	Processing system revision	ontime	13241.599950731	Sum of GTIs [s]
caldbver	4.4.10	&#160	ontime2	13238.358950436	Sum of GTIs [s]
date	2012-06-18T19:31:04	Date and time of file creation	ontime3	13241.599950731	Sum of GTIs [s]
revision	2	Processing version of data	ontime5	13241.599950731	Sum of GTIs [s]
			ontime6	13241.599950731	Sum of GTIs [s]
			ontime7	13241.599950731	Sum of GTIs [s]
			ontime8	13241.599950731	Sum of GTIs [s]
			l1events	786232	Number of level 1 events

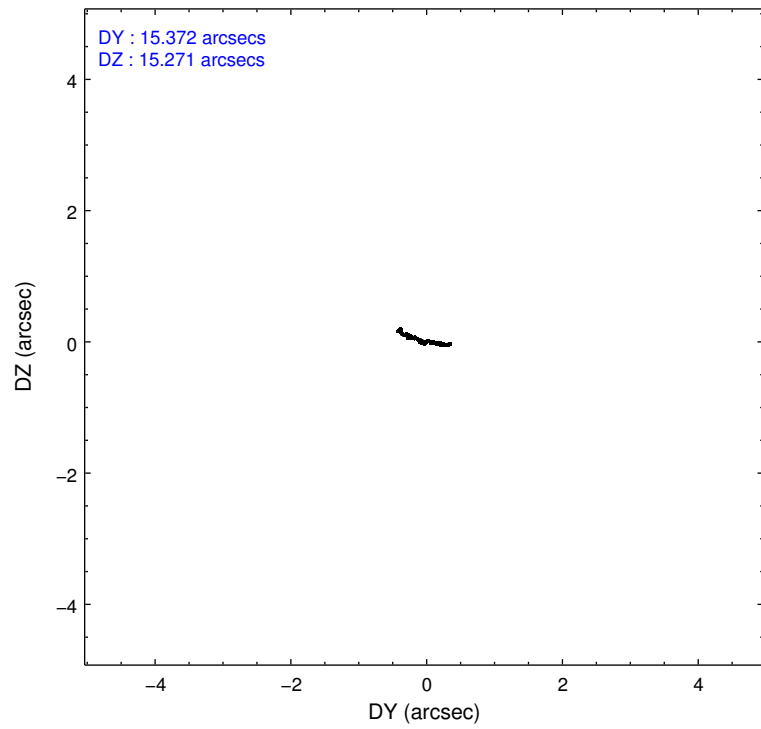
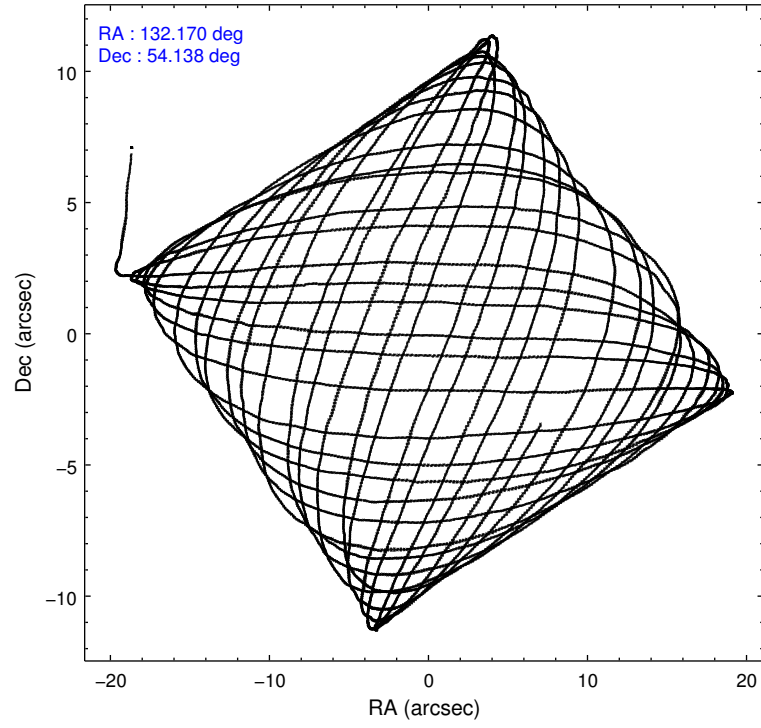
### 2.1.4 Events

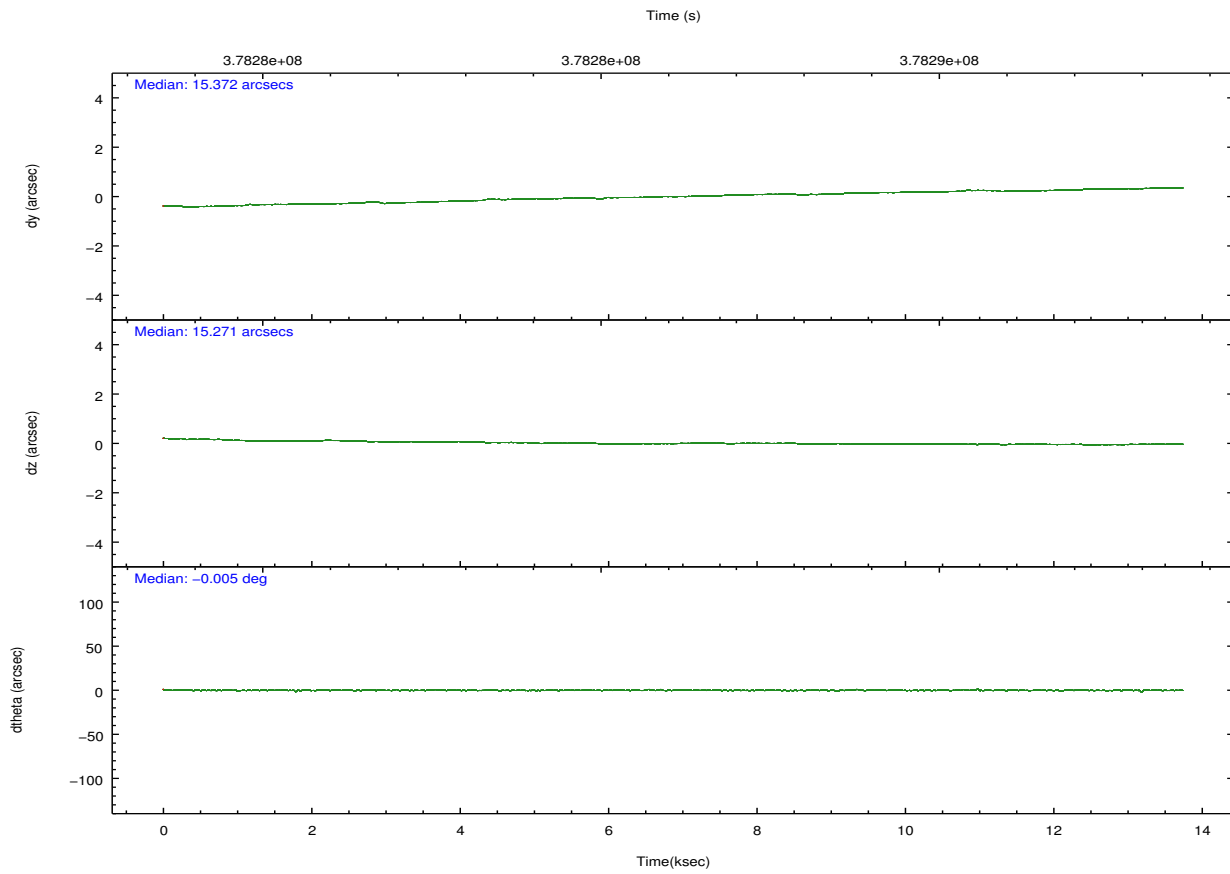
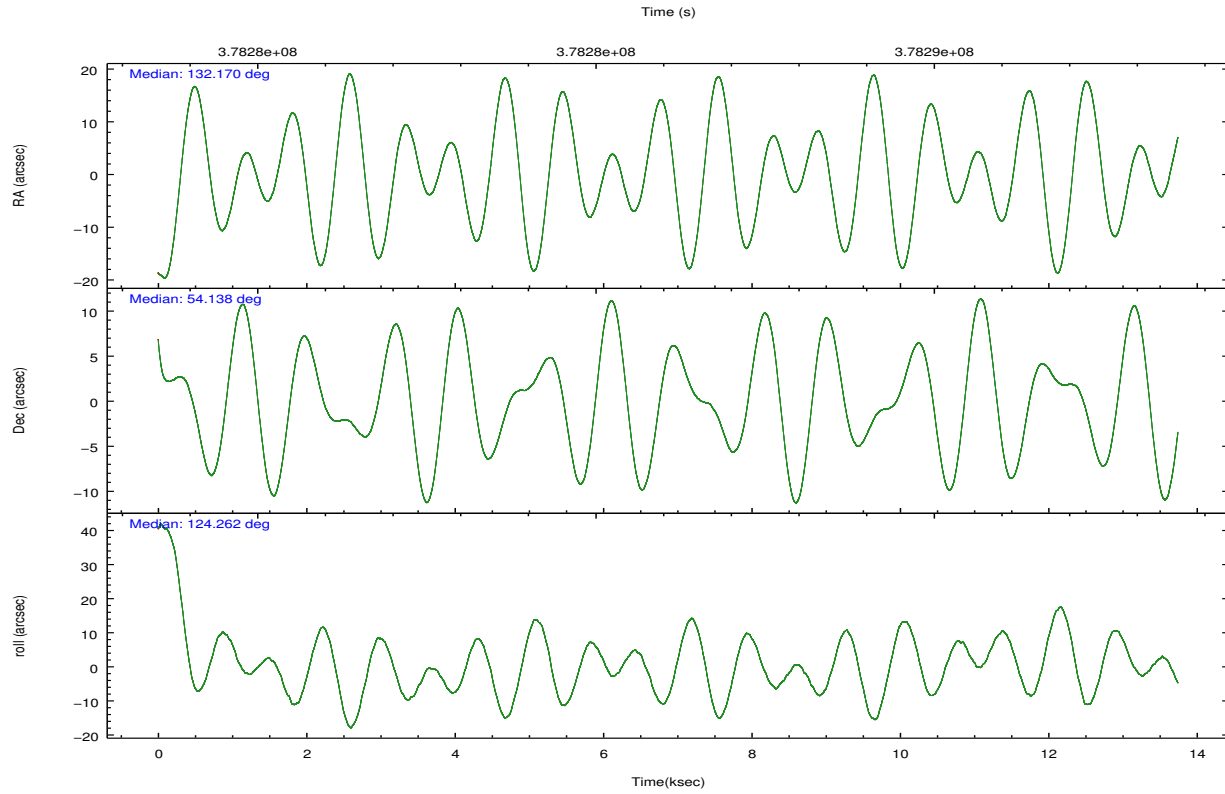
	ccd 2	ccd 3	ccd 5	ccd 6	ccd 7	ccd 8		ccd 2	ccd 3	ccd 5	ccd 6	ccd 7	ccd 8
level 1 events	117097	113490	166438	113801	130502	144904	grade 0 events	4225	3895	8142	4384	5566	10907
rejected events	105630	102530	83522	101438	70986	107649		3%	3%	4%	3%	4%	7%
rejected %	90%	90%	50%	89%	54%	74%	grade 1 events	66	60	352	62	176	105
								0%	0%	0%	0%	0%	0%
							grade 2 events	2751	2443	25230	2725	11951	8802
								2%	2%	15%	2%	9%	6%
							grade 3 events	1168	1236	3253	1294	5352	4037
								0%	1%	1%	1%	4%	2%
							grade 4 events	1149	1228	3182	1305	5404	3698
								0%	1%	1%	1%	4%	2%
							grade 5 events	4166	4664	13019	4670	13852	7010
								3%	4%	7%	4%	10%	4%
							grade 6 events	2176	2160	43143	2656	31260	9813
								1%	1%	25%	2%	23%	6%
							grade 7 events	101396	97804	70117	96705	56941	100532
								86%	86%	42%	84%	43%	69%

## 2.2 Compared Parameters

Parameter	Planned	Actual	Parameter	Planned	Actual
Instrument	ACIS	ACIS	Obspar format version number	7	7
Detector	ACIS-235678	ACIS-235678	Obspar file type	PREDICTED	ACTUAL
Grating	NONE	NONE	Obspar update status	NONE	UPDATED
Data mode	FAINT	FAINT	CCD I0 on	N	N
Observation mode	POINTING	POINTING	CCD I1 on	N	N
[deg] Pointing RA	132.212253	132.16988626597	CCD I2 on	O2	Y
[deg] Pointing Dec	54.126057	54.13756381014171	CCD I3 on	O1	Y
[deg] Pointing Roll	124.081950	124.2729140219705	CCD S0 on	N	N
[mm] SIM focus pos	-0.684267	-0.6828225247311905	CCD S1 on	Y	Y
[mm] SIM defocus	0	0.001444936568705701	CCD S2 on	Y	Y
[mm] SIM translation stage pos	-190.132523	-190.1400660498719	CCD S3 on	Y	Y
[mm] SIM translation stage offset	0	0.00754346686406393	CCD S4 on	Y	Y
[s] Observation start time (MET)	378279739.184000	378278552.62834	CCD S5 on	N	N
Observation start date	2009-12-27T05:41:13	2009-12-27T05:22:32	Number of optional ACIS chips dropped	0	0
[s] Observation end time (MET)	378292939.184000	378294057.29162	On-chip summing requested	N	N
Observation end date	2009-12-27T09:21:13	2009-12-27T09:40:57	Subarray requested	NONE	NONE
Read mode	TIMED	TIMED	Alternating exposures requested	N	N
			[s] Primary exposure time	0.000000	3.2

## 2.3 Aspect



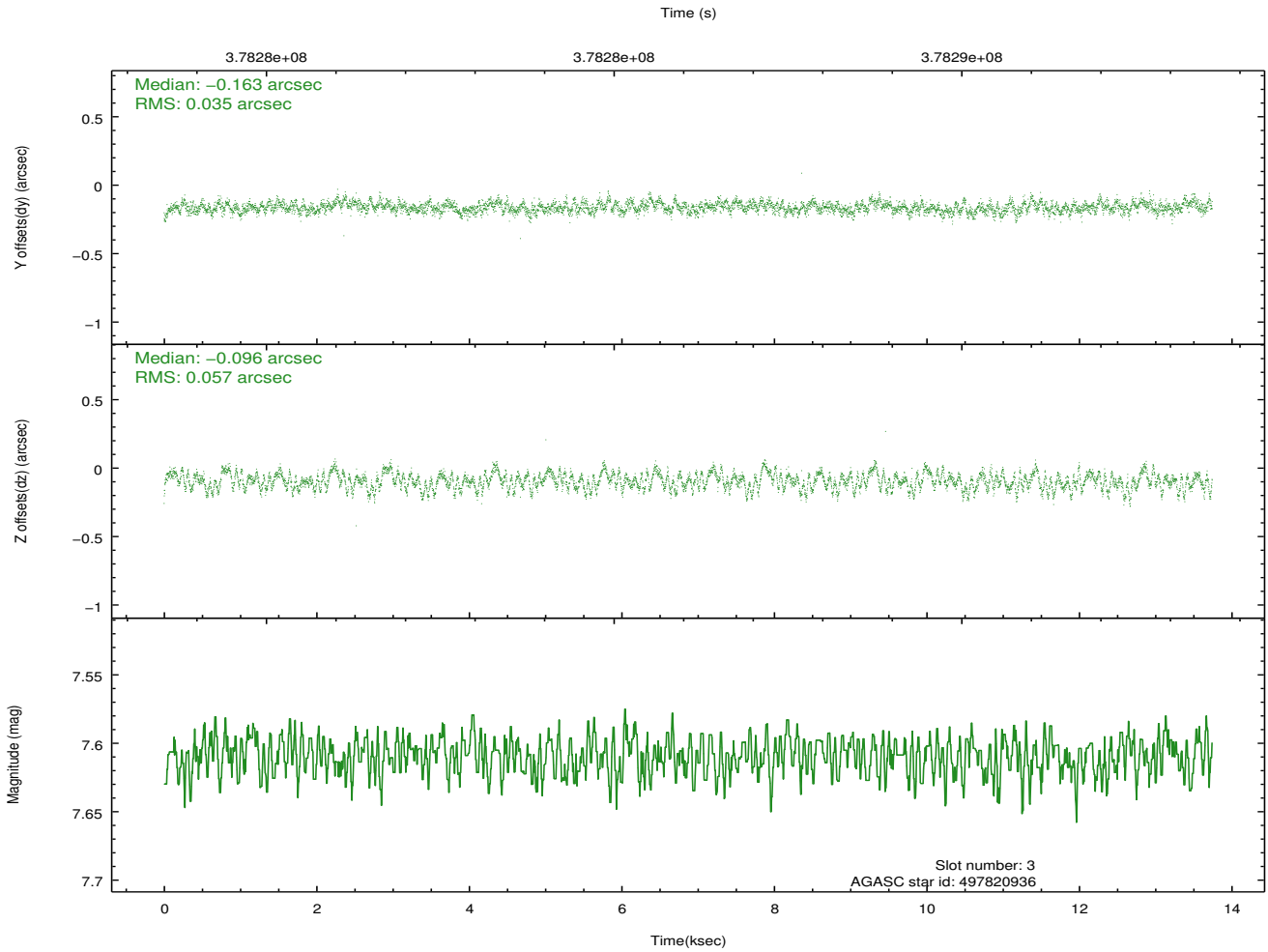
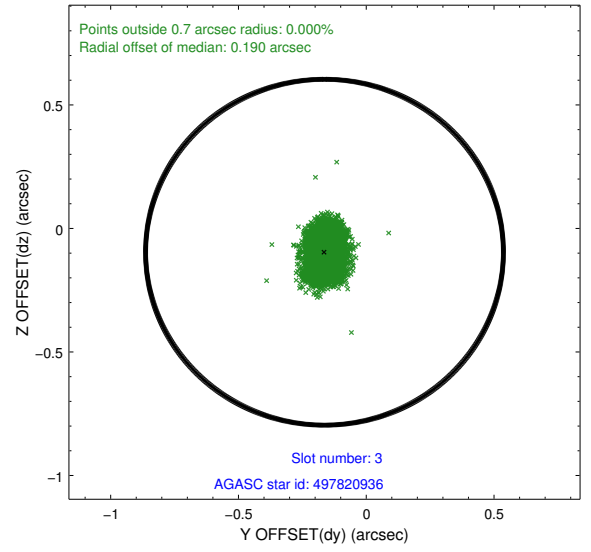
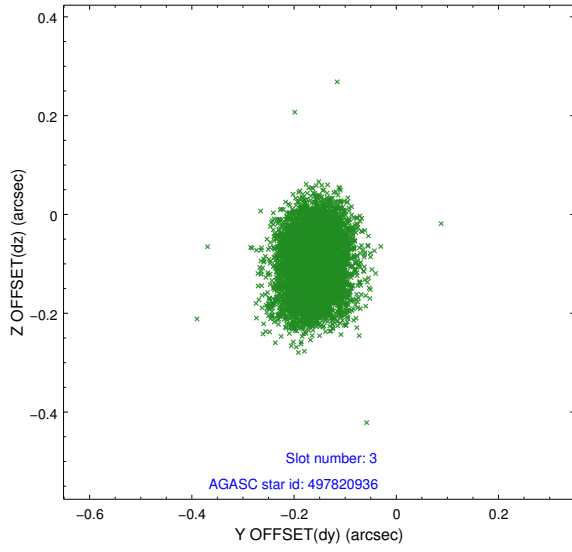


### Slot Statistics

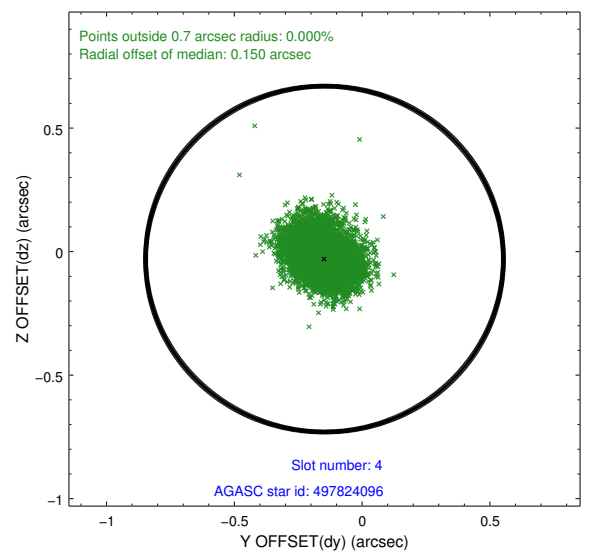
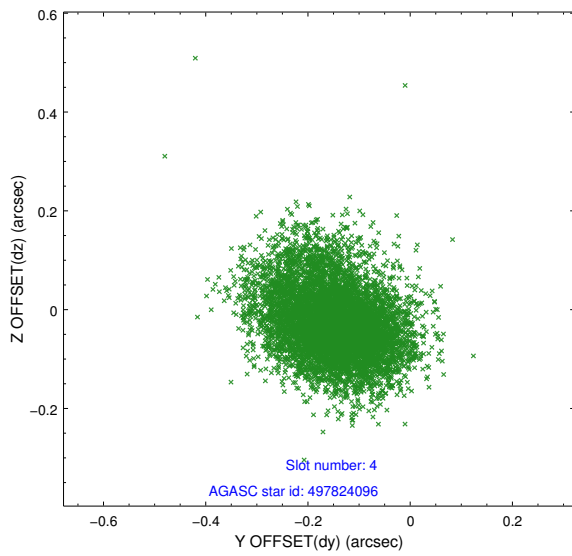
slot	status	id	mag	n_pts	med_dy	med_dz	dr1	dr2	ra	dec	mean_y	mean_z
0	FID	ACIS-S-2	6.89	3353	-0.102	-0.029	0.009	0.015	0.000000	0.000000	-768.42	-1736.72
1	FID	ACIS-S-4	6.98	3353	0.210	0.057	0.010	0.028	0.000000	0.000000	2144.99	171.53
2	FID	ACIS-S-5	7.00	3353	-0.139	-0.019	0.013	0.028	0.000000	0.000000	-1820.88	165.47
3	GUIDE	497820936	7.61	6705	-0.163	-0.096	0.070	0.118	131.493181	53.916367	235.41	1681.42
4	GUIDE	497824096	9.22	6687	-0.147	-0.030	0.105	0.175	132.525022	54.722562	1415.93	-1742.25
5	GUIDE	497825920	8.65	6704	0.038	0.201	0.074	0.118	132.363960	54.104670	-242.30	-222.31
6	GUIDE	497826112	9.08	6682	0.123	0.080	0.113	0.170	131.956534	54.397420	1110.69	-103.80
7	GUIDE	497828720	9.49	6689	0.149	-0.154	0.094	0.151	131.913593	53.354801	-1938.70	2086.24

## 2.4 Star Slots

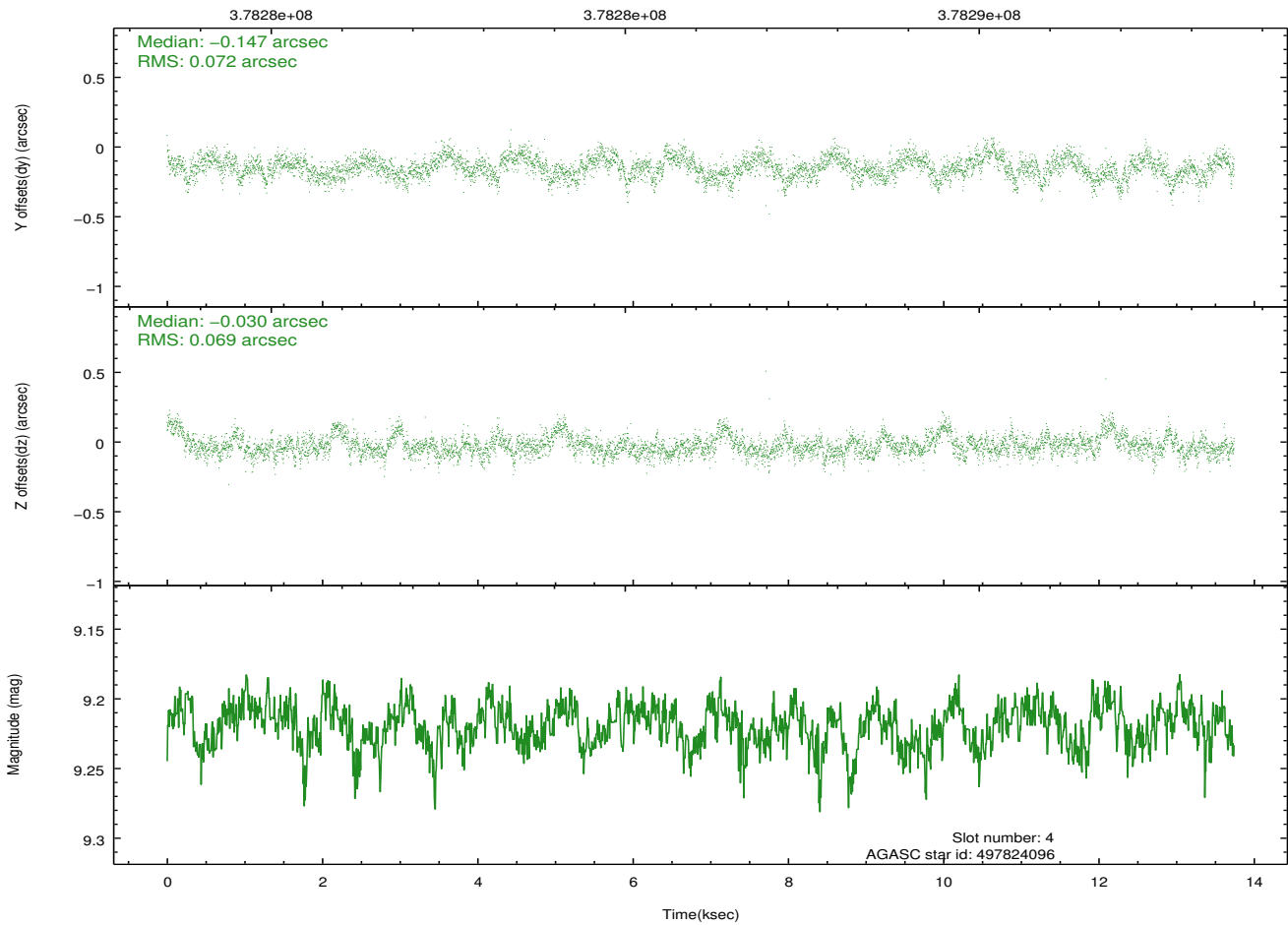
### 2.4.1 Slot 3



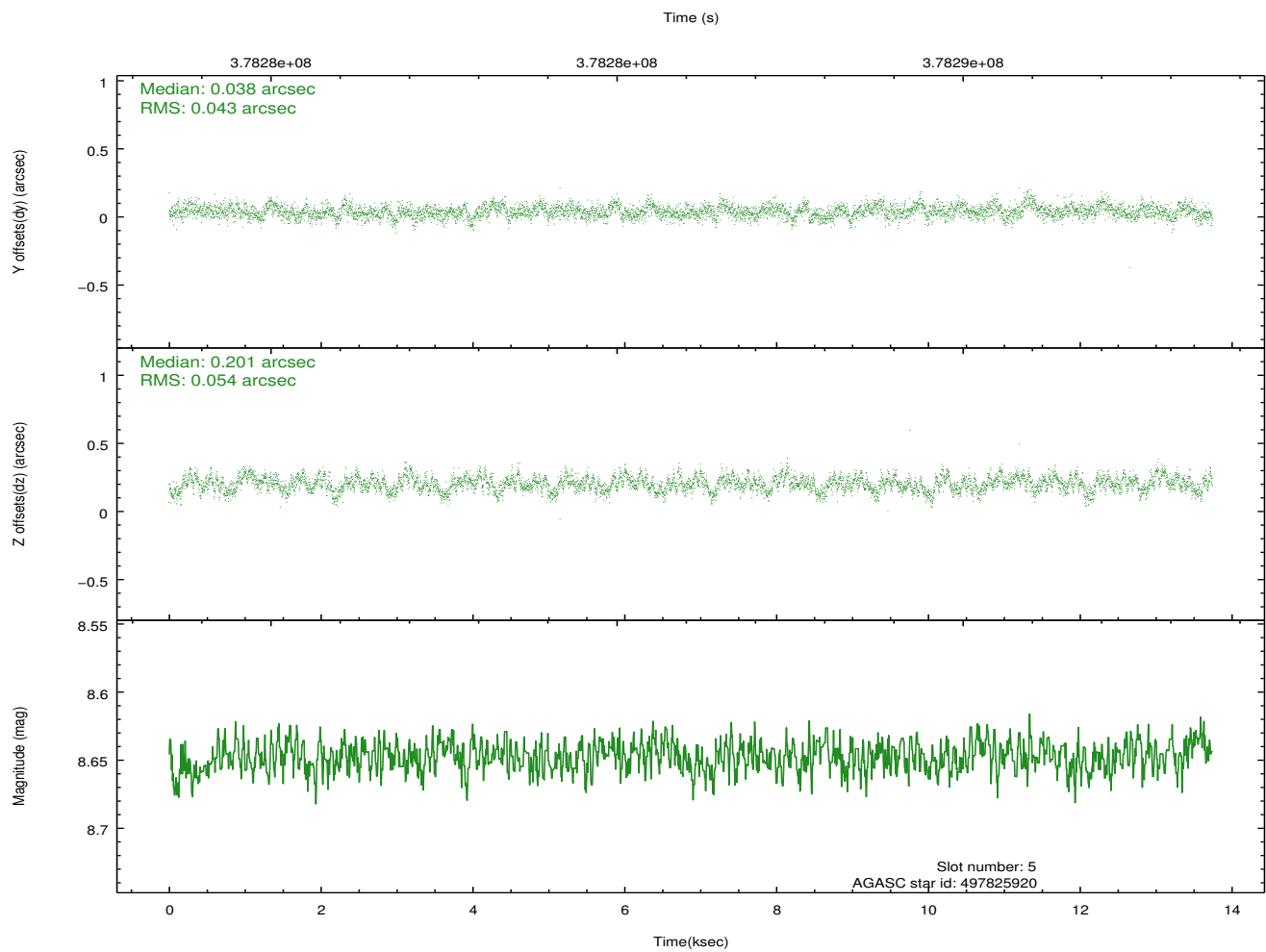
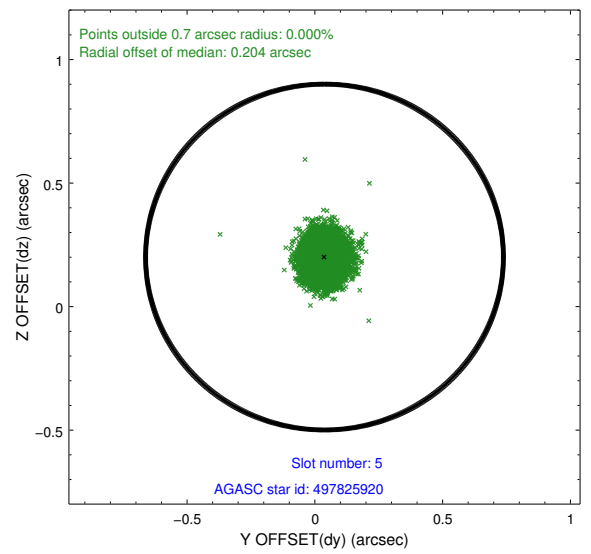
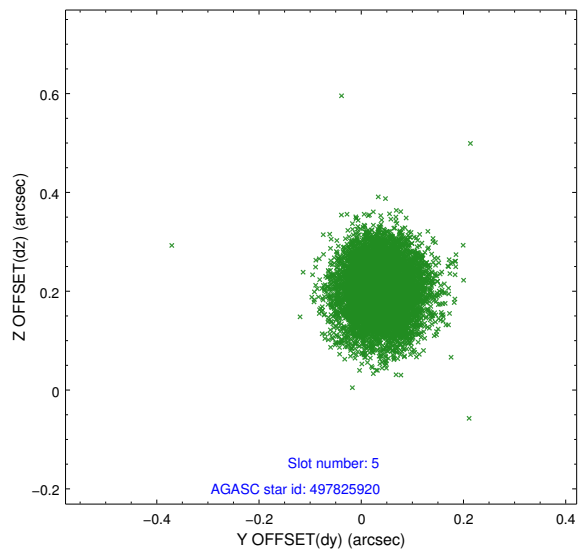
## 2.4.2 Slot 4



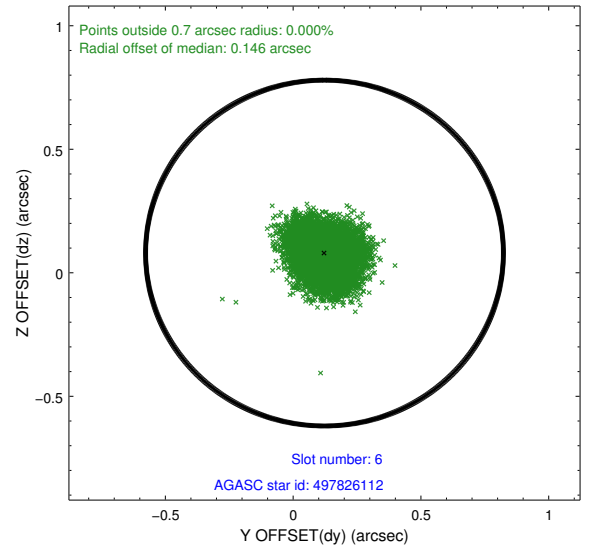
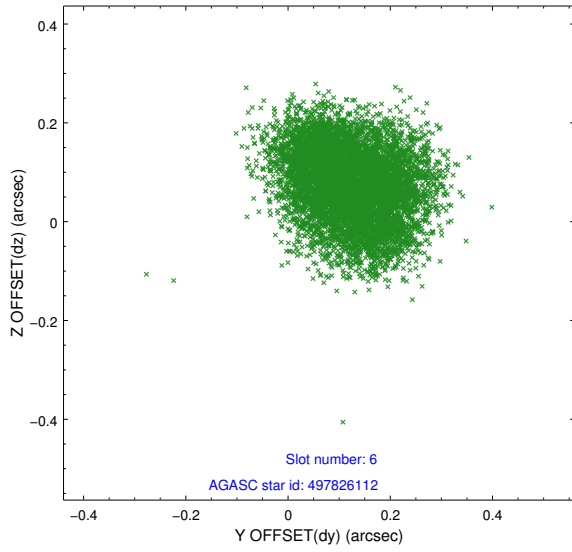
Time (s)



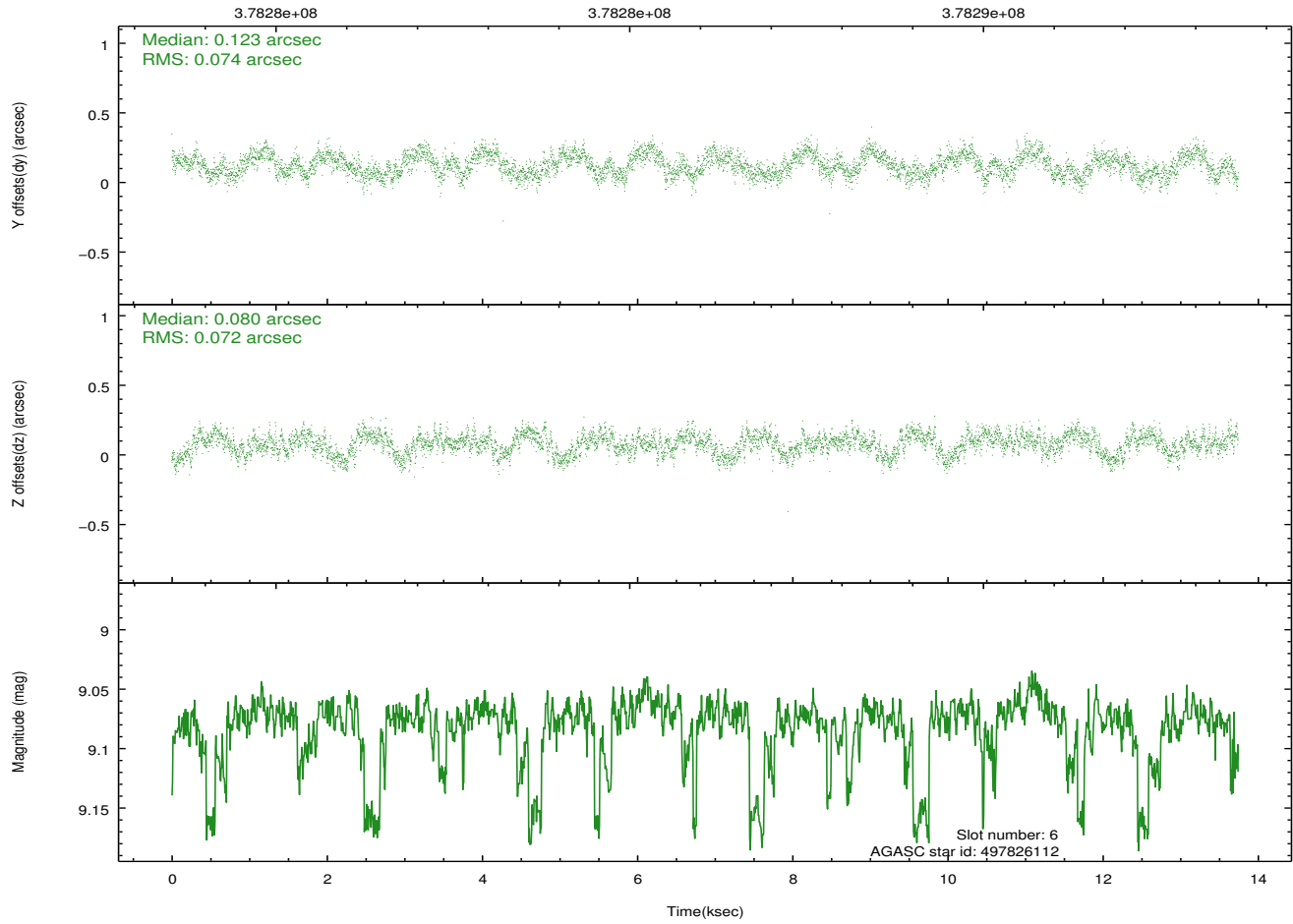
### 2.4.3 Slot 5



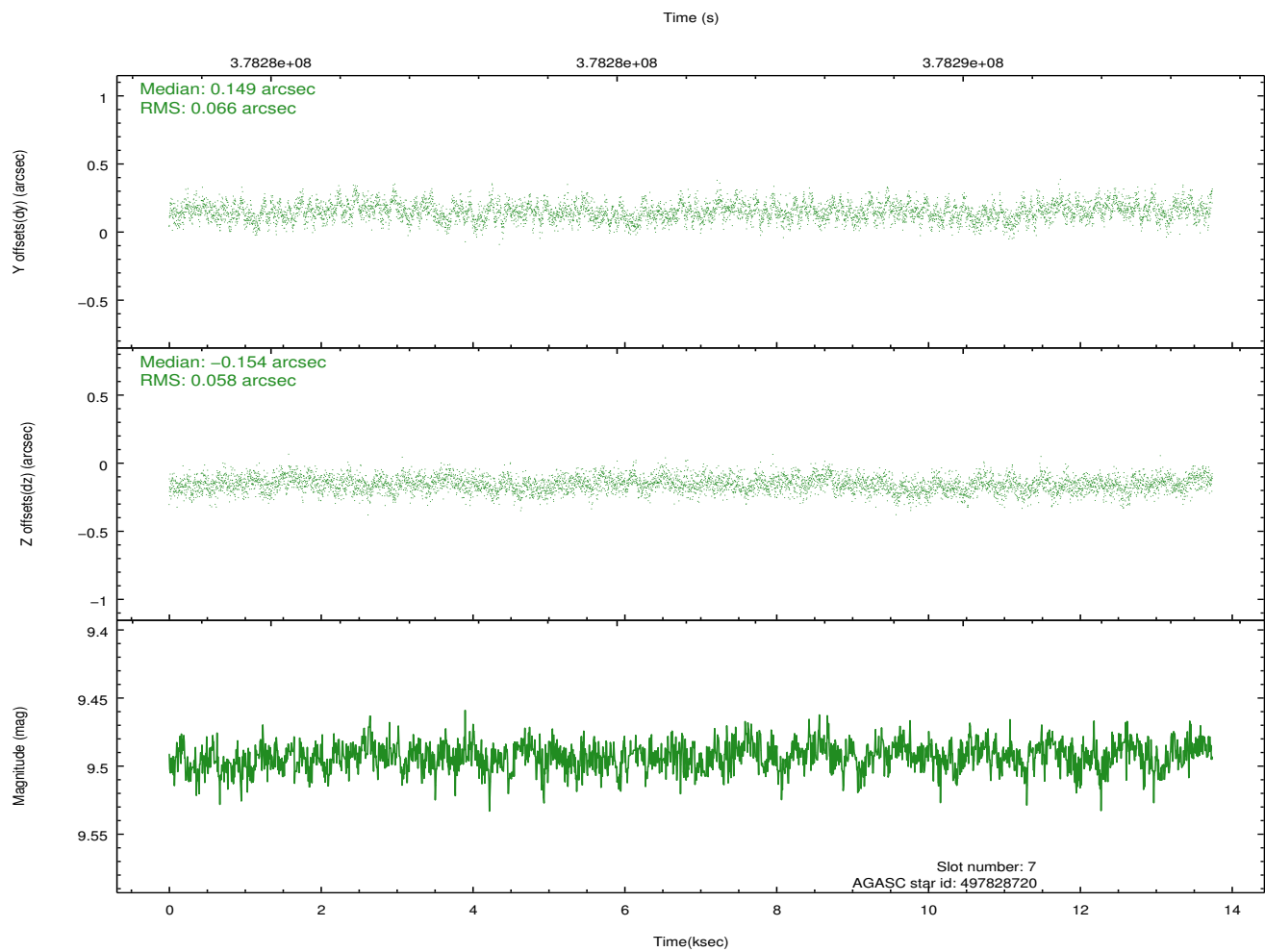
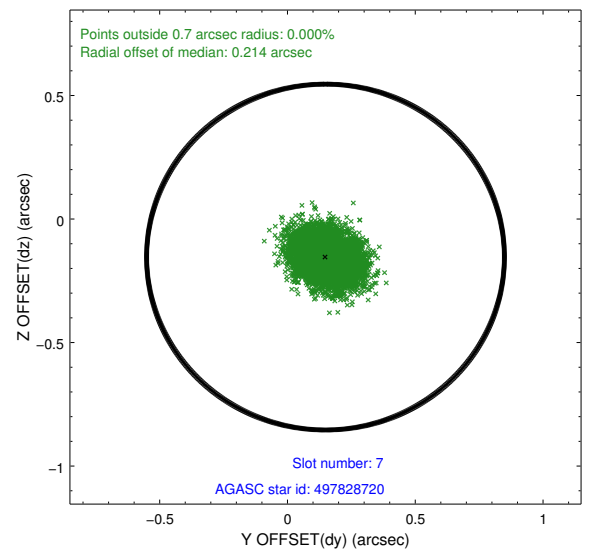
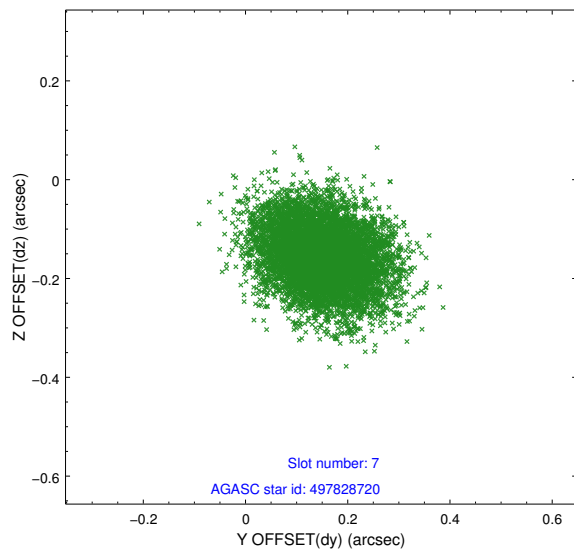
### 2.4.4 Slot 6



Time (s)

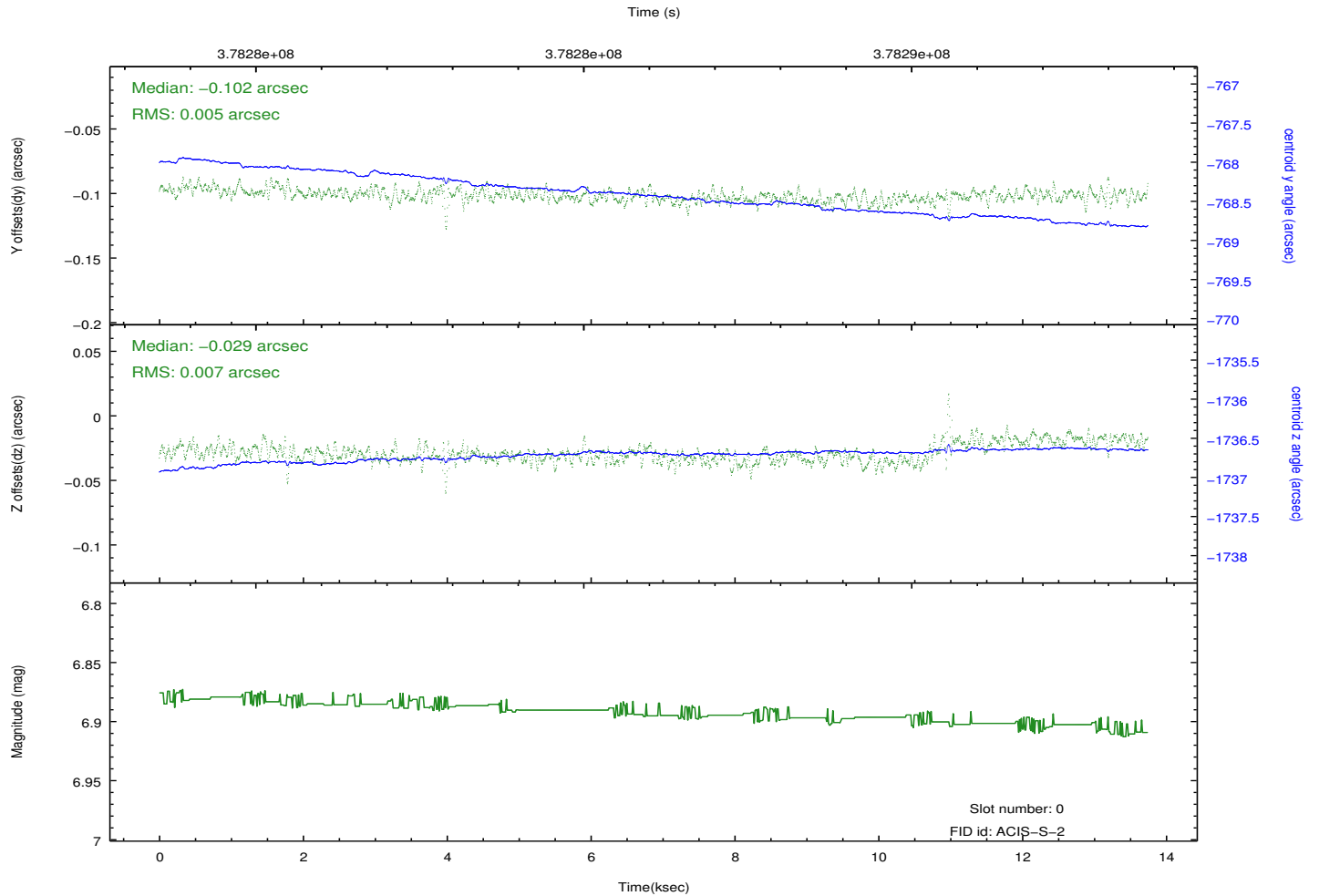
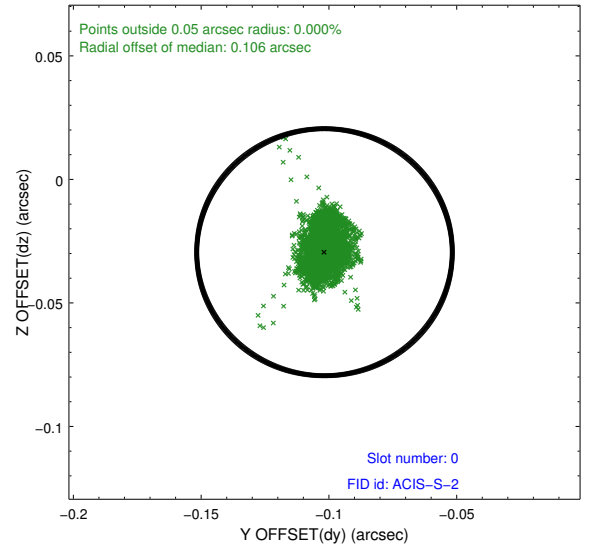
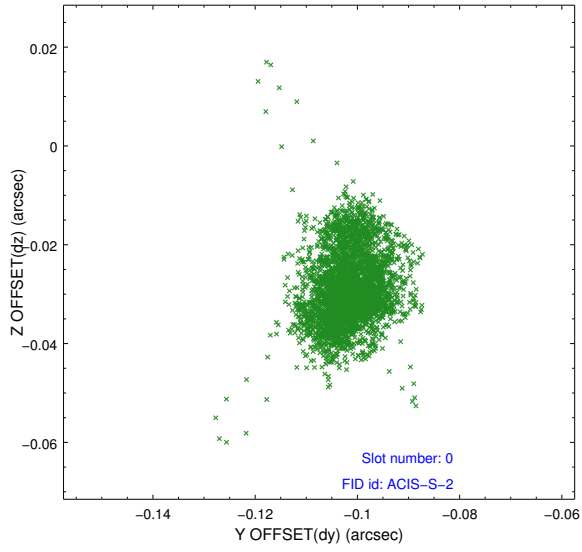


## 2.4.5 Slot 7

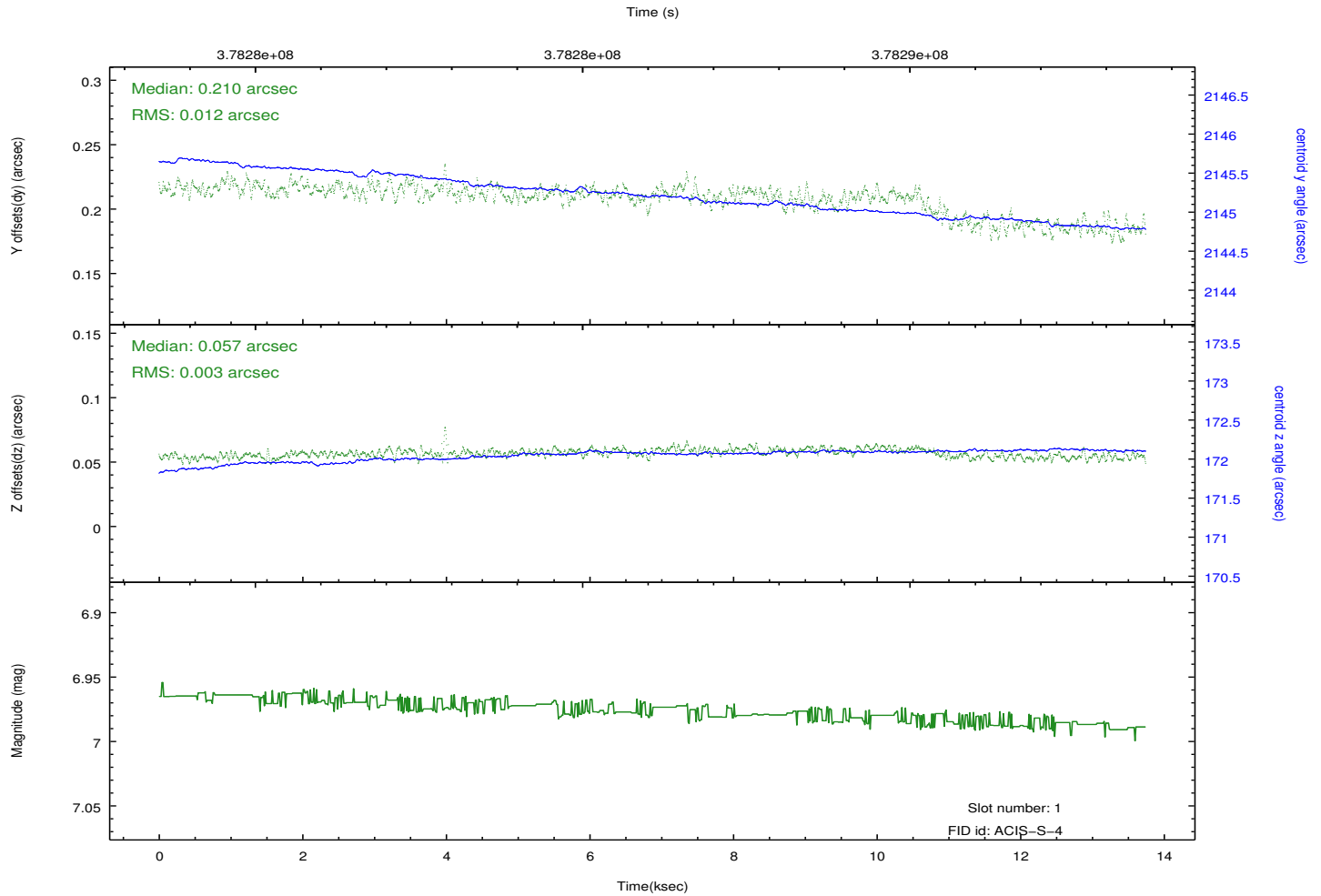
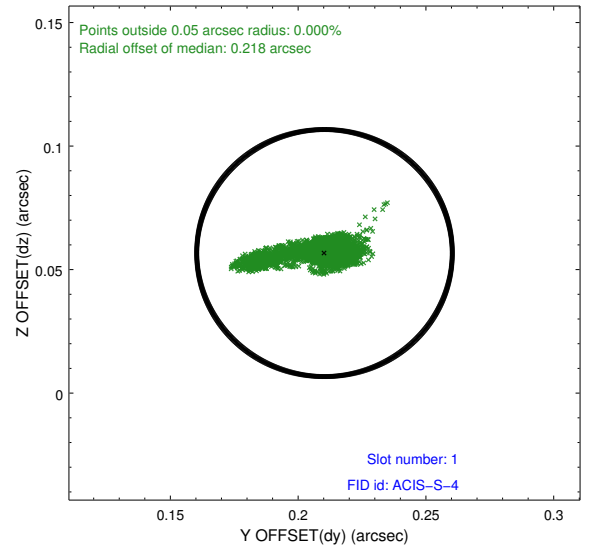
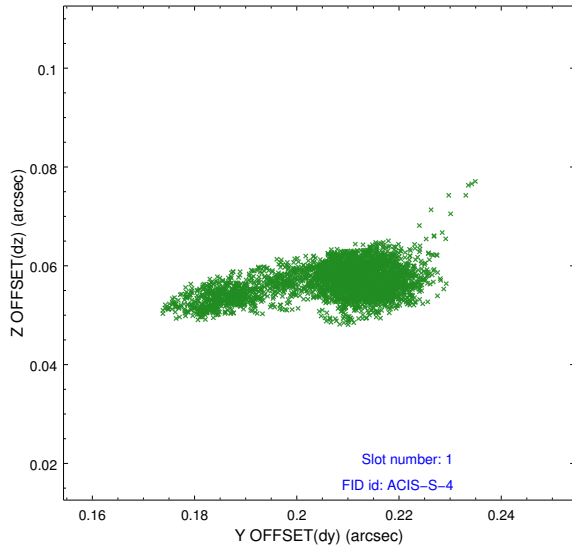


## 2.5 FID Slots

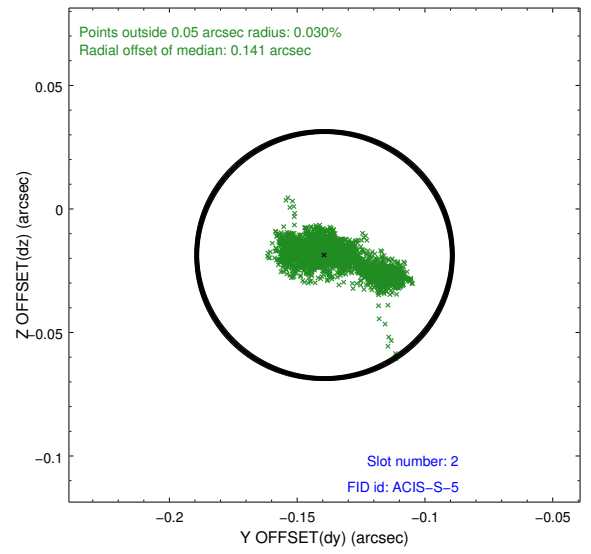
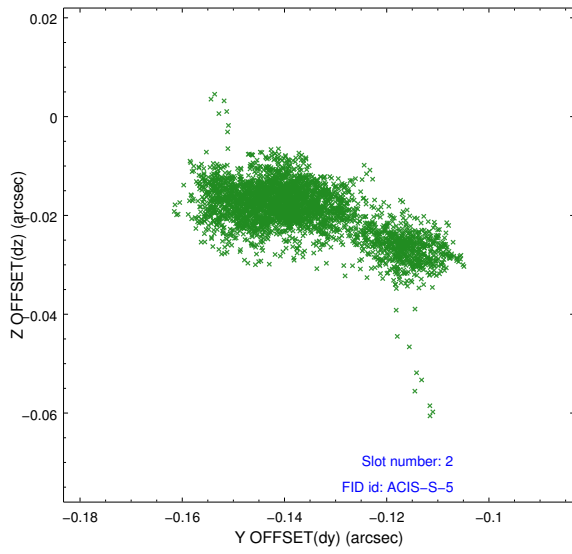
### 2.5.1 Slot 0



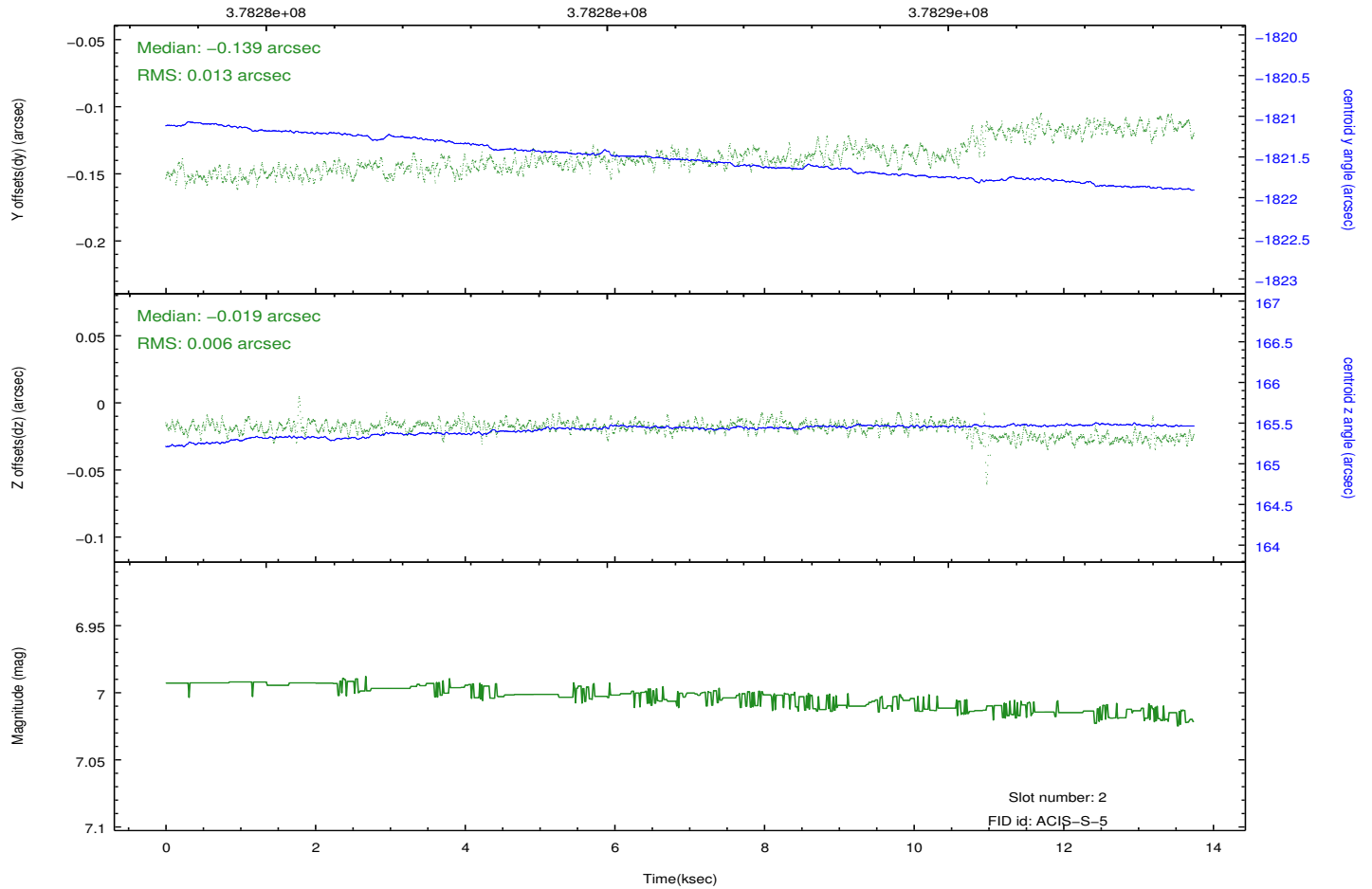
## 2.5.2 Slot 1



### 2.5.3 Slot 2



Time (s)



# A Summary

## A.1 Status

V&V Scientist	Beth Sundheim
V&V Date (YYYY-MM-DD)	2012.06.22
V&V Edition	1
V&V Disposition and Status	OK
V&V Charge Time	13.241599950731

## A.2 Comments