

# V&V Reference Report

## L2 ASCDS Version : 8.4.5

Observation 11532 - L2 Version 2  
Chandra X-Ray Center

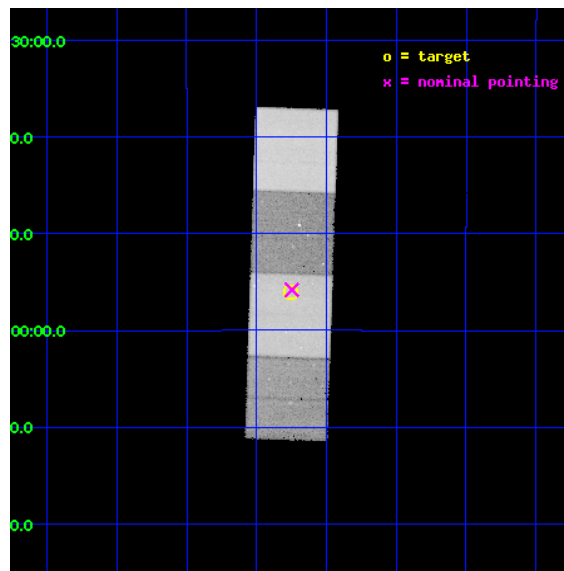
L2 Processing Date : Jun 12 2012

## Contents

<b>1</b>	<b>Front</b>	<b>2</b>
<b>2</b>	<b>OBI</b>	<b>3</b>
2.1	OBI . . . . .	3
2.1.1	Images . . . . .	3
2.1.2	Bias . . . . .	3
2.1.3	Parameters . . . . .	4
2.1.4	Events . . . . .	4
2.2	Compared Parameters . . . . .	5
2.3	Aspect . . . . .	6
2.4	Star Slots . . . . .	9
2.4.1	Slot 3 . . . . .	9
2.4.2	Slot 4 . . . . .	10
2.4.3	Slot 5 . . . . .	11
2.4.4	Slot 6 . . . . .	12
2.4.5	Slot 7 . . . . .	13
2.5	FID Slots . . . . .	14
2.5.1	Slot 0 . . . . .	14
2.5.2	Slot 1 . . . . .	15
2.5.3	Slot 2 . . . . .	16
<b>A</b>	<b>Summary</b>	<b>17</b>
A.1	Status . . . . .	17
A.2	Comments . . . . .	17

# 1 Front

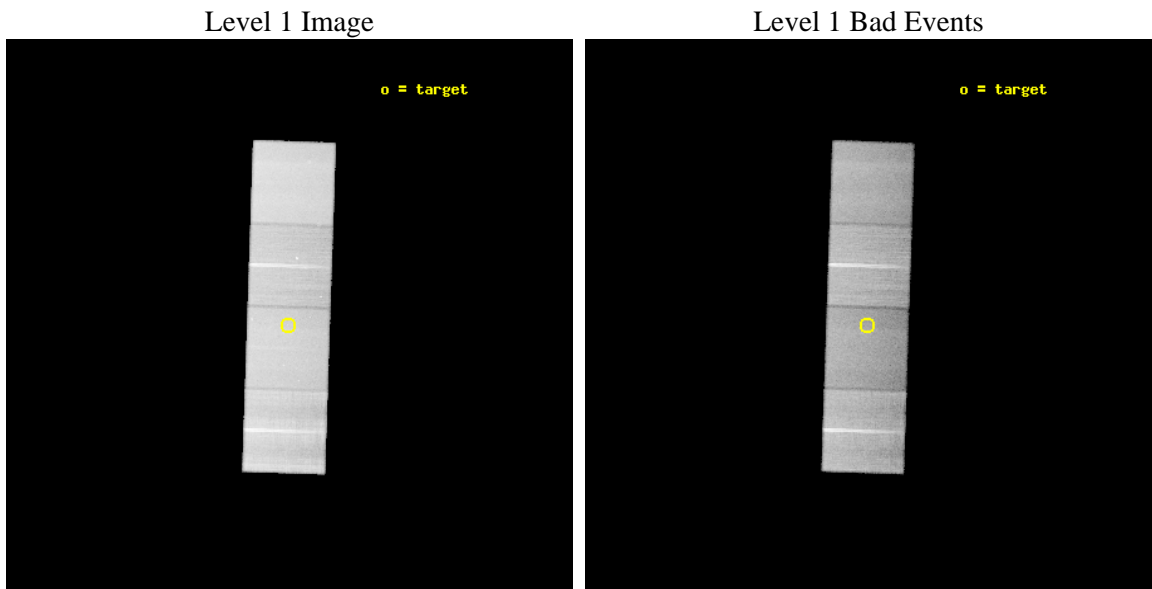
seq_num	702118	Sequence number
obs_id	11532	Observation id
title	Deeply embedded AGNs in infrared ultraluminous starbursts	Proposal
observer	Dr Guido Risaliti	Principal investigator
object	IRAS 00397-1312	Source name
dtcycle	0	&#160
cycle	P	events from which exps? Prim/Second/Both
ra_targ	10.564583	Observer's specified target RA [deg]
dec_targ	-12.934167	Observer's specified target Dec [deg]
ra_nom	10.561831906095	Nominal RA [deg]
dec_nom	-12.93012659363	Nominal Dec [deg]
roll_nom	91.882742679988	Nominal Roll [deg]
revision	2	Processing version of data
ontime	45043.000346422	Sum of GTIs [s]
livetime	44454.480386722	Livetime [s]
ontime5	45043.000346422	Sum of GTIs [s]
ontime6	45036.718375683	Sum of GTIs [s]
ontime7	45043.000346422	Sum of GTIs [s]
ontime8	45033.577444971	Sum of GTIs [s]
l2events	541674	Number of level 2 events



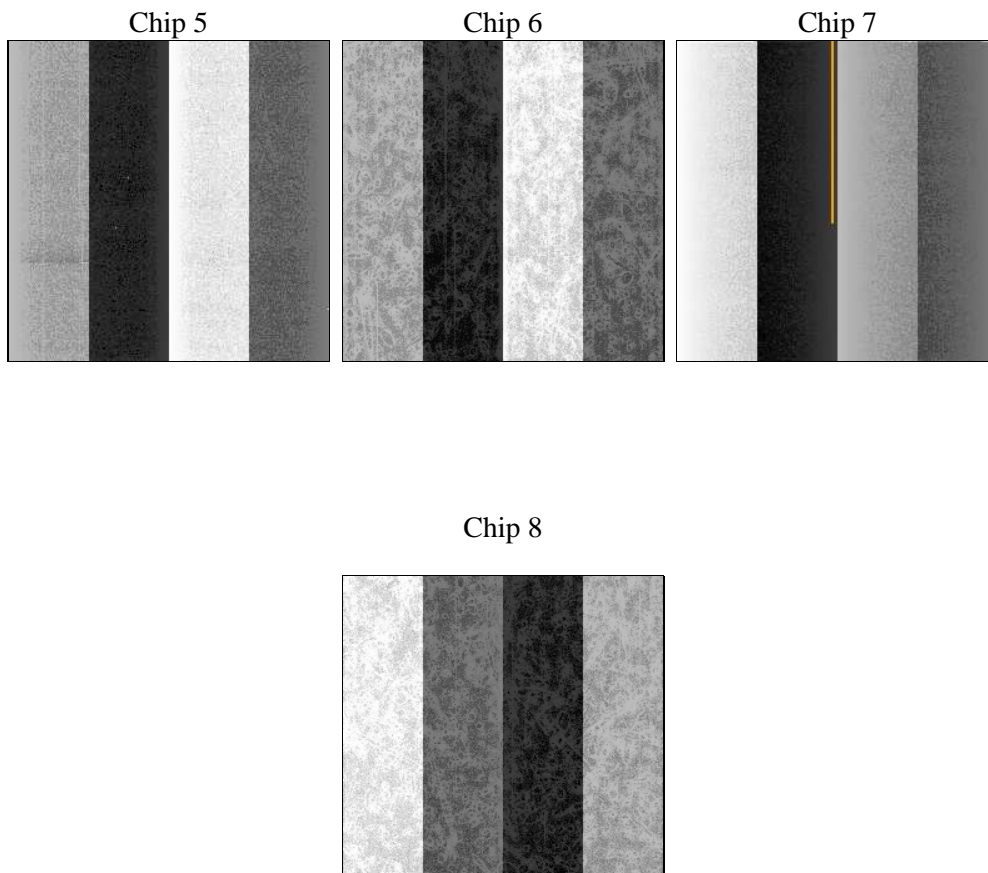
## 2 OBI

### 2.1 OBI

#### 2.1.1 Images



#### 2.1.2 Bias



### 2.1.3 Parameters

obi_num	0	Obi number	sched_exp_time	45000.000000	[s] Scheduled observation exposure time
ascdsver	8.4.5	Processing system revision	ontime	45043.000346422	Sum of GTIs [s]
caldsver	4.4.10	&#160	ontime5	45043.000346422	Sum of GTIs [s]
date	2012-06-12T05:08:09	Date and time of file creation	ontime6	45036.718375683	Sum of GTIs [s]
revision	2	Processing version of data	ontime7	45043.000346422	Sum of GTIs [s]
			ontime8	45033.577444971	Sum of GTIs [s]
			l1events	1889141	Number of level 1 events

### 2.1.4 Events

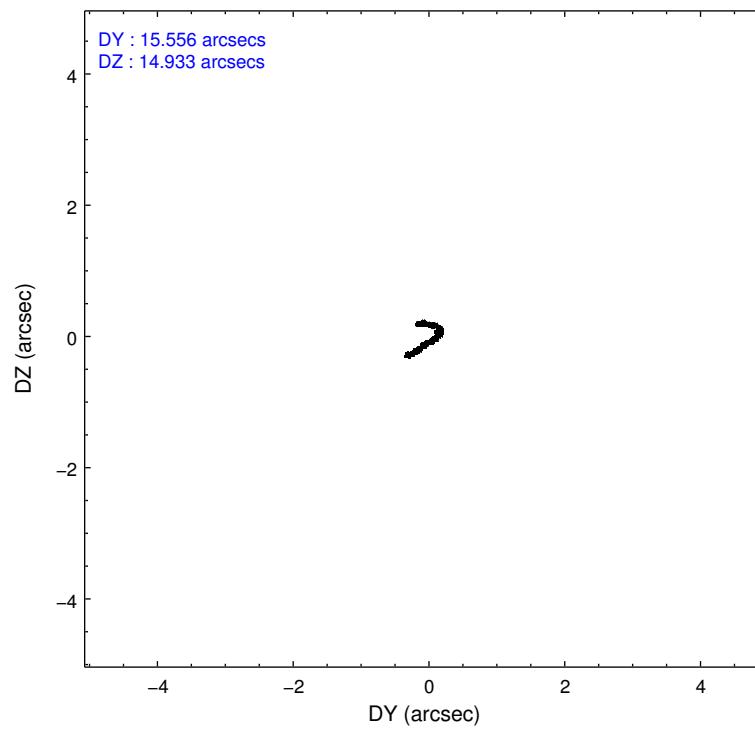
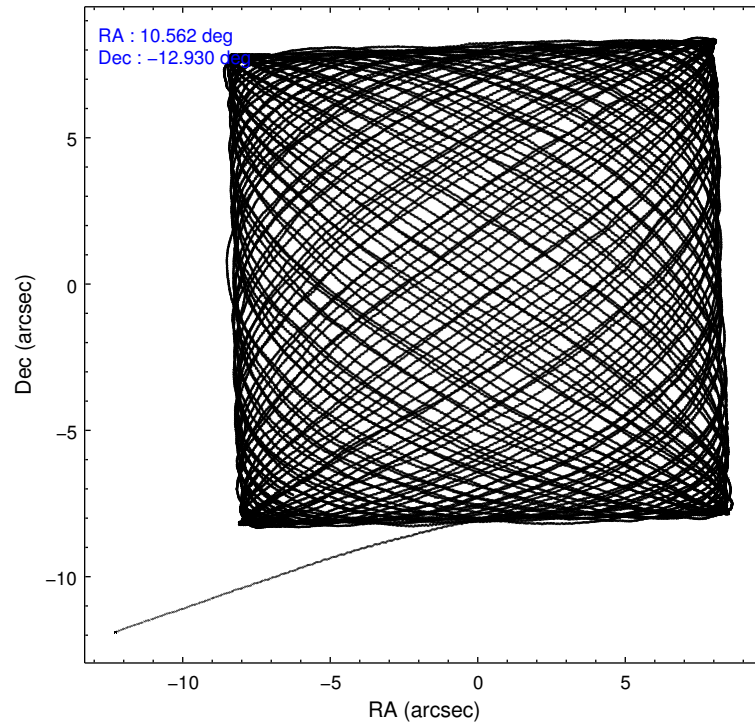
	ccd 5	ccd 6	ccd 7	ccd 8
level 1 events	545923	397536	450816	494866
rejected events	279990	354901	244052	369584
rejected %	51%	89%	54%	74%

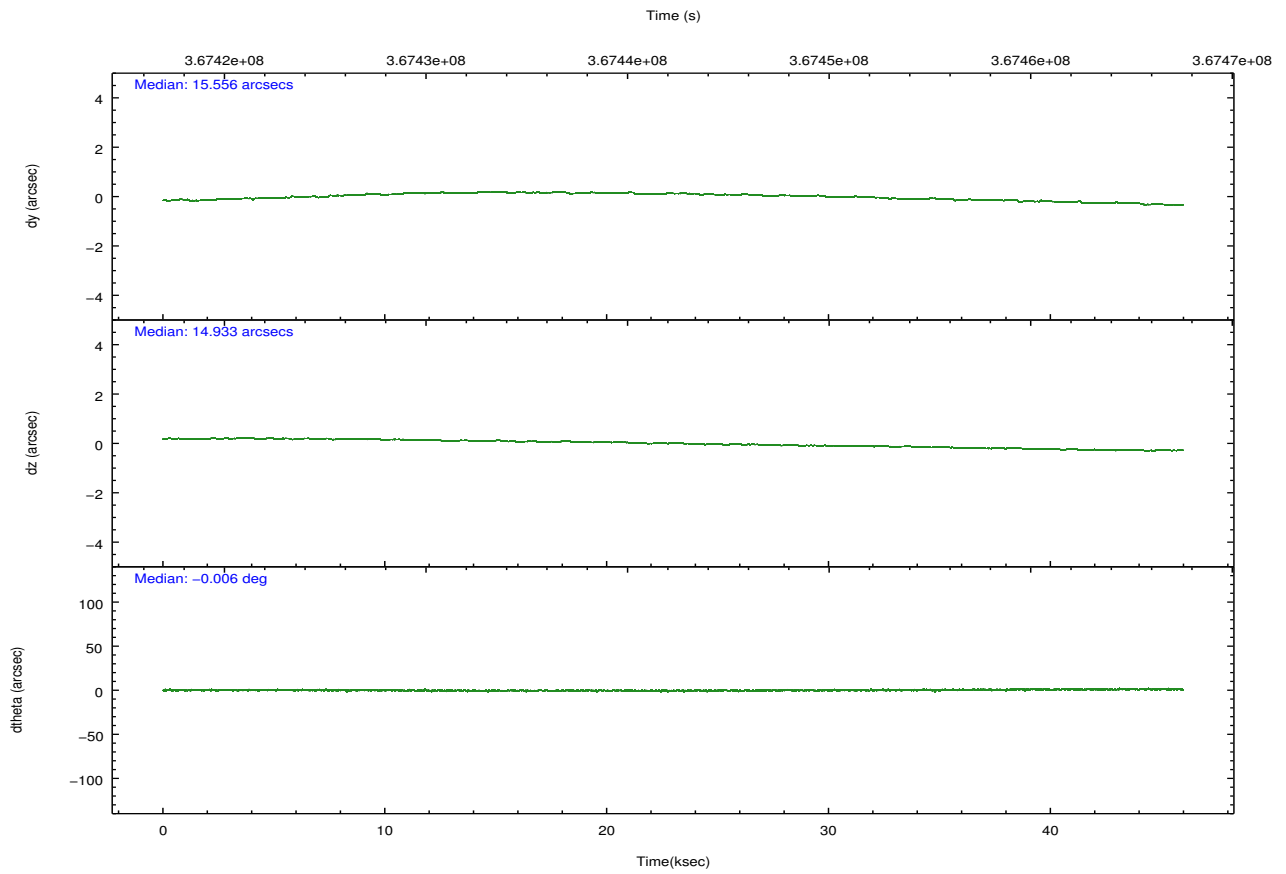
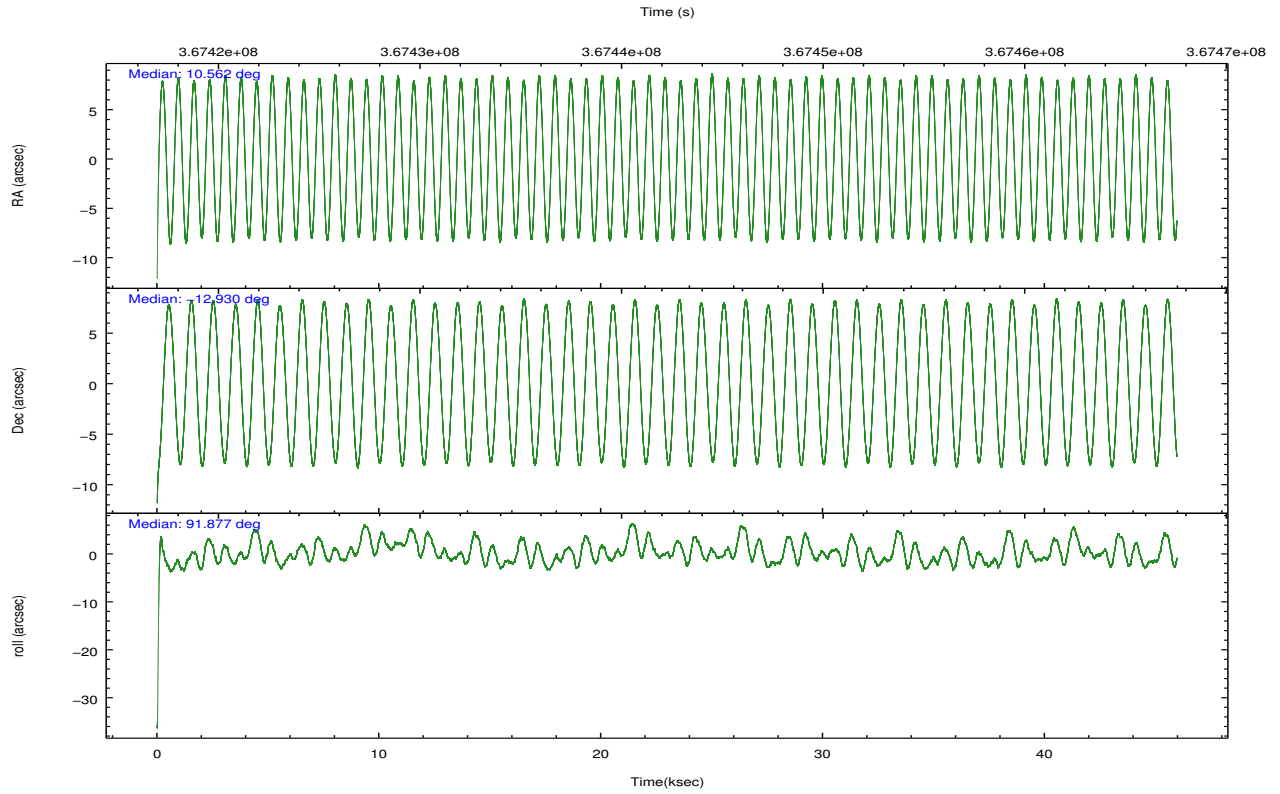
	ccd 5	ccd 6	ccd 7	ccd 8
grade 0 events	17575	15165	19429	37412
	3%	3%	4%	7%
grade 1 events	1072	198	592	420
	0%	0%	0%	0%
grade 2 events	81990	9571	42516	28858
	15%	2%	9%	5%
grade 3 events	10978	4502	18700	13500
	2%	1%	4%	2%
grade 4 events	10636	4474	18758	12422
	1%	1%	4%	2%
grade 5 events	43081	16463	47392	23472
	7%	4%	10%	4%
grade 6 events	144778	8926	107389	33094
	26%	2%	23%	6%
grade 7 events	235813	338237	196040	345688
	43%	85%	43%	69%

## 2.2 Compared Parameters

Parameter	Planned	Actual	Parameter	Planned	Actual
Instrument	ACIS	ACIS	Obspar format version number	7	7
Detector	ACIS-5678	ACIS-5678	Obspar file type	PREDICTED	ACTUAL
Grating	NONE	NONE	Obspar update status	NONE	UPDATED
Data mode	VFAINT	VFAINT	Number of optional ACIS chips dropped	0	0
Observation mode	POINTING	POINTING	On-chip summing requested	N	N
[deg] Pointing RA	10.576974	10.56183190609491	Subarray requested	NONE	NONE
[deg] Pointing Dec	-12.953141	-12.9301265936302	Alternating exposures requested	N	N
[deg] Pointing Roll	91.729517	91.88274267998791	[s] Primary exposure time	0.000000	3.1
[mm] SIM focus pos	-0.684267	-0.6828225247311905			
[mm] SIM defocus	0	0.001444936568705701			
[mm] SIM translation stage pos	-190.132523	-190.1400660498719			
[mm] SIM translation stage offset	0	0.00754346686406393			
[s] Observation start time (MET)	367420240.184000	367418465.41917			
Observation start date	2009-08-23T13:09:34	2009-08-23T12:41:05			
[s] Observation end time (MET)	367465240.184000	367466005.43405			
Observation end date	2009-08-24T01:39:34	2009-08-24T01:53:25			
Read mode	TIMED	TIMED			

## 2.3 Aspect



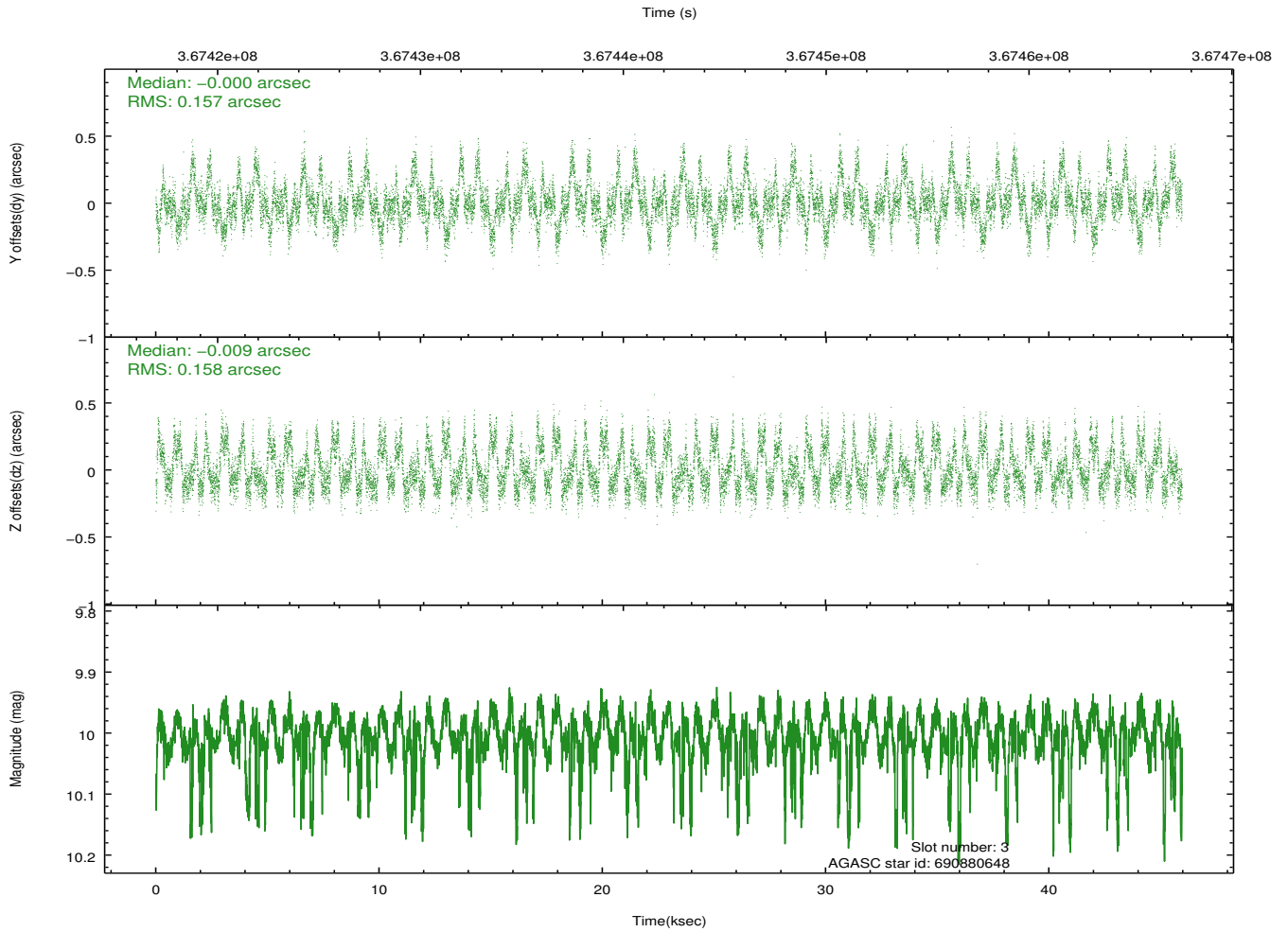
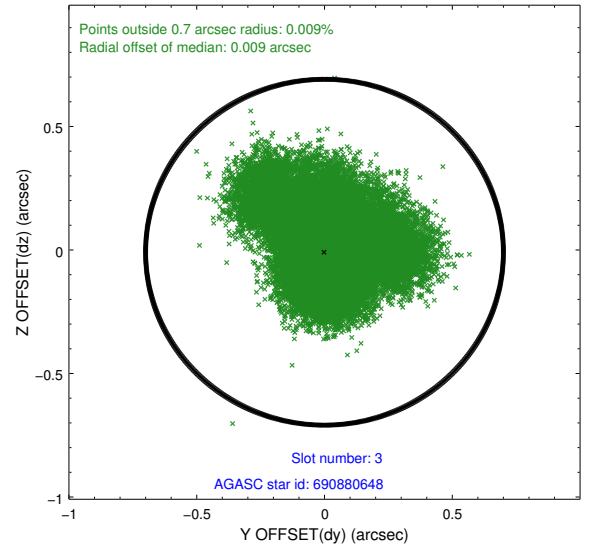
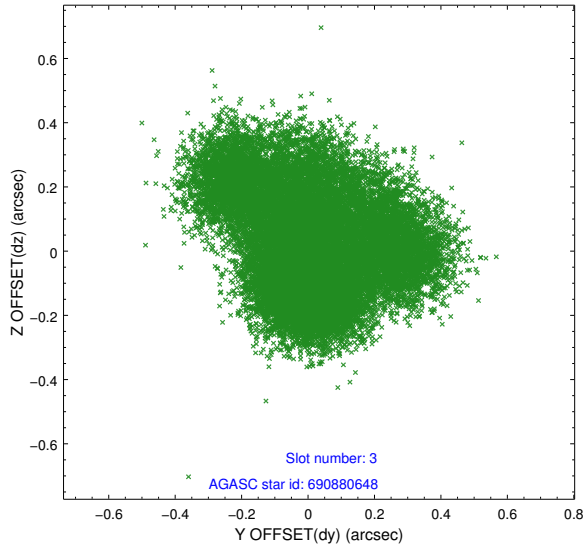


### Slot Statistics

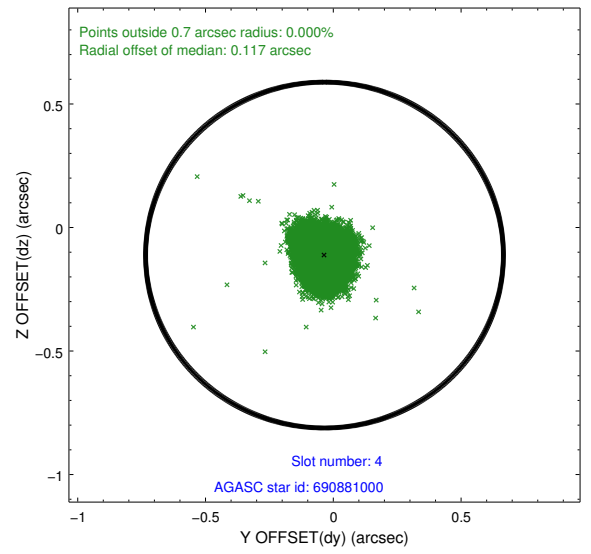
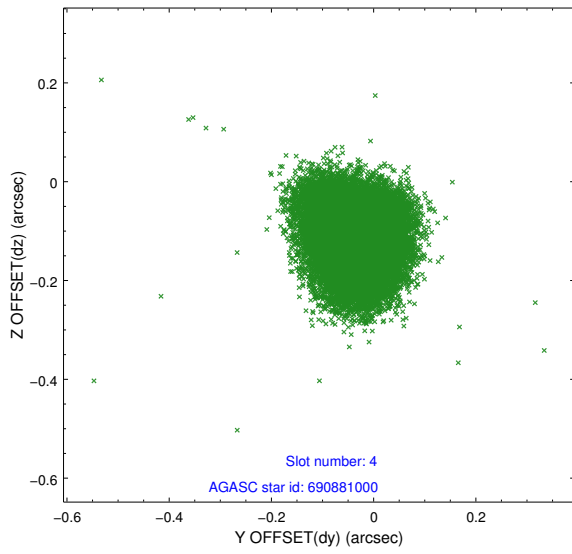
slot	status	id	mag	n_pts	med_dy	med_dz	dr1	dr2	ra	dec	mean_y	mean_z
0	FID	ACIS-S-1	6.98	11211	0.055	-0.041	0.012	0.022	0.000000	0.000000	927.59	-1731.96
1	FID	ACIS-S-5	7.03	11209	-0.130	0.028	0.014	0.021	0.000000	0.000000	-1821.62	165.64
2	FID	ACIS-S-6	7.14	11208	0.055	0.025	0.014	0.022	0.000000	0.000000	393.12	809.62
3	GUIDE	690880648	10.00	22312	-0.000	-0.009	0.241	0.384	10.468723	-12.648792	1106.47	346.88
4	GUIDE	690881000	8.69	22404	-0.034	-0.112	0.079	0.127	10.369276	-12.690399	967.40	700.47
5	GUIDE	690881632	7.72	22415	0.062	0.230	0.075	0.124	11.115356	-13.415818	-1723.63	-1834.73
6	GUIDE	690894896	8.27	22366	-0.024	-0.257	0.076	0.120	9.984413	-13.079708	-395.34	2090.52
7	GUIDE	690895480	9.99	22251	-0.019	0.136	0.208	0.336	11.261733	-12.431501	1801.74	-2462.45

## 2.4 Star Slots

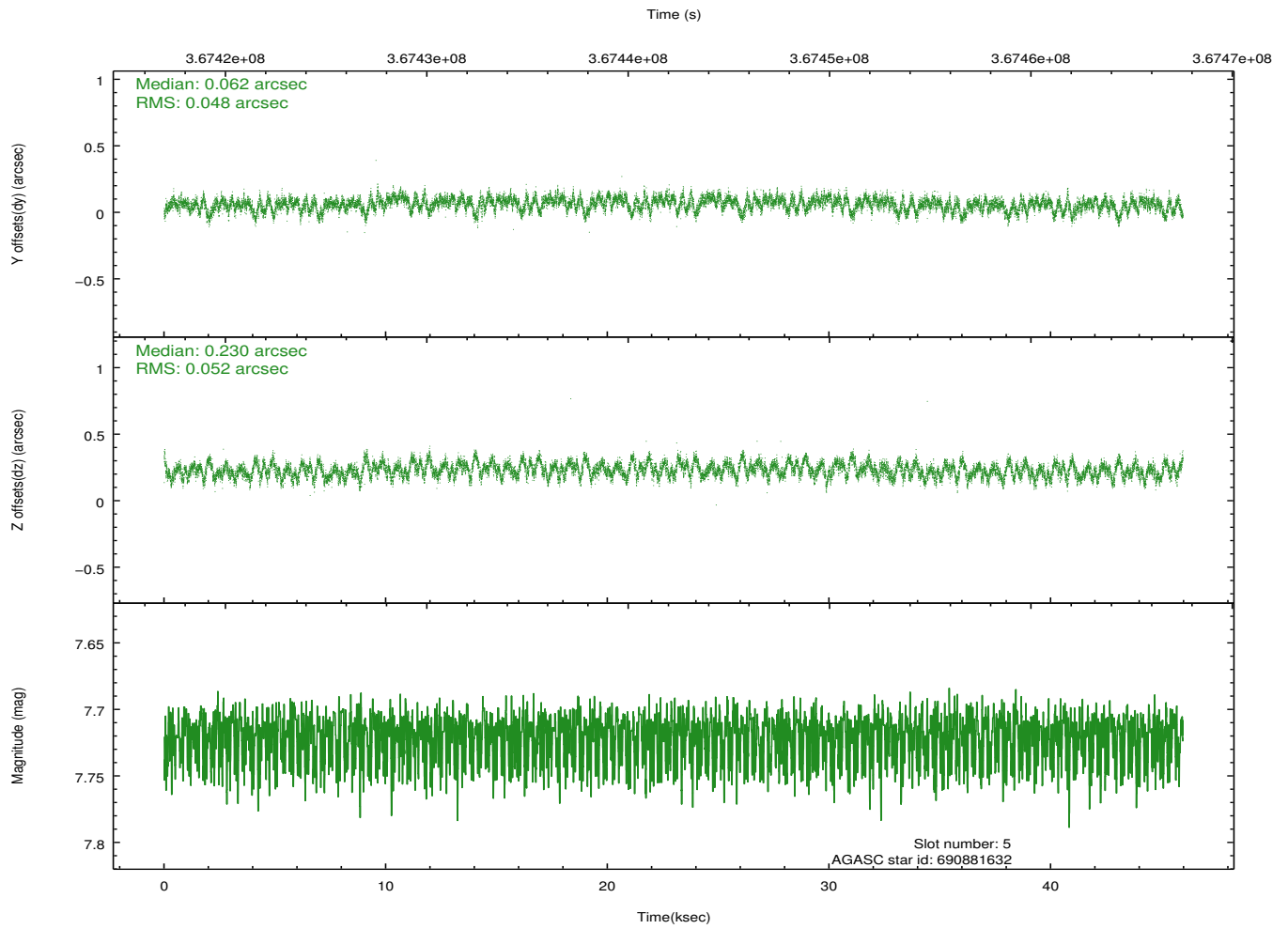
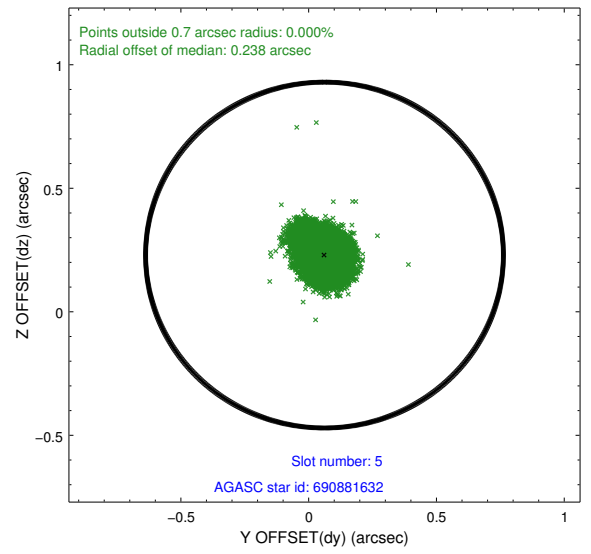
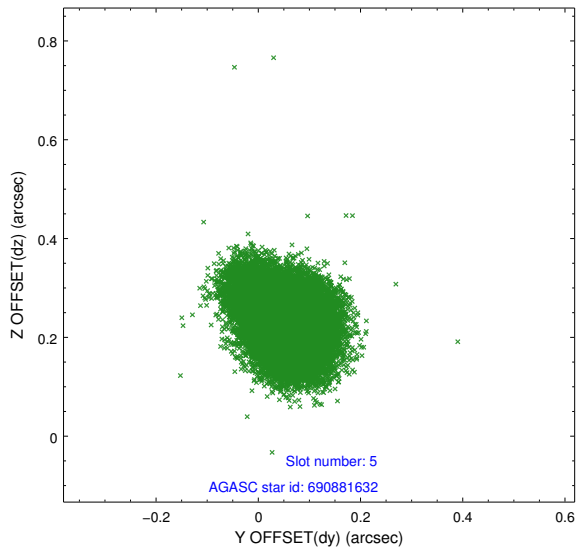
### 2.4.1 Slot 3



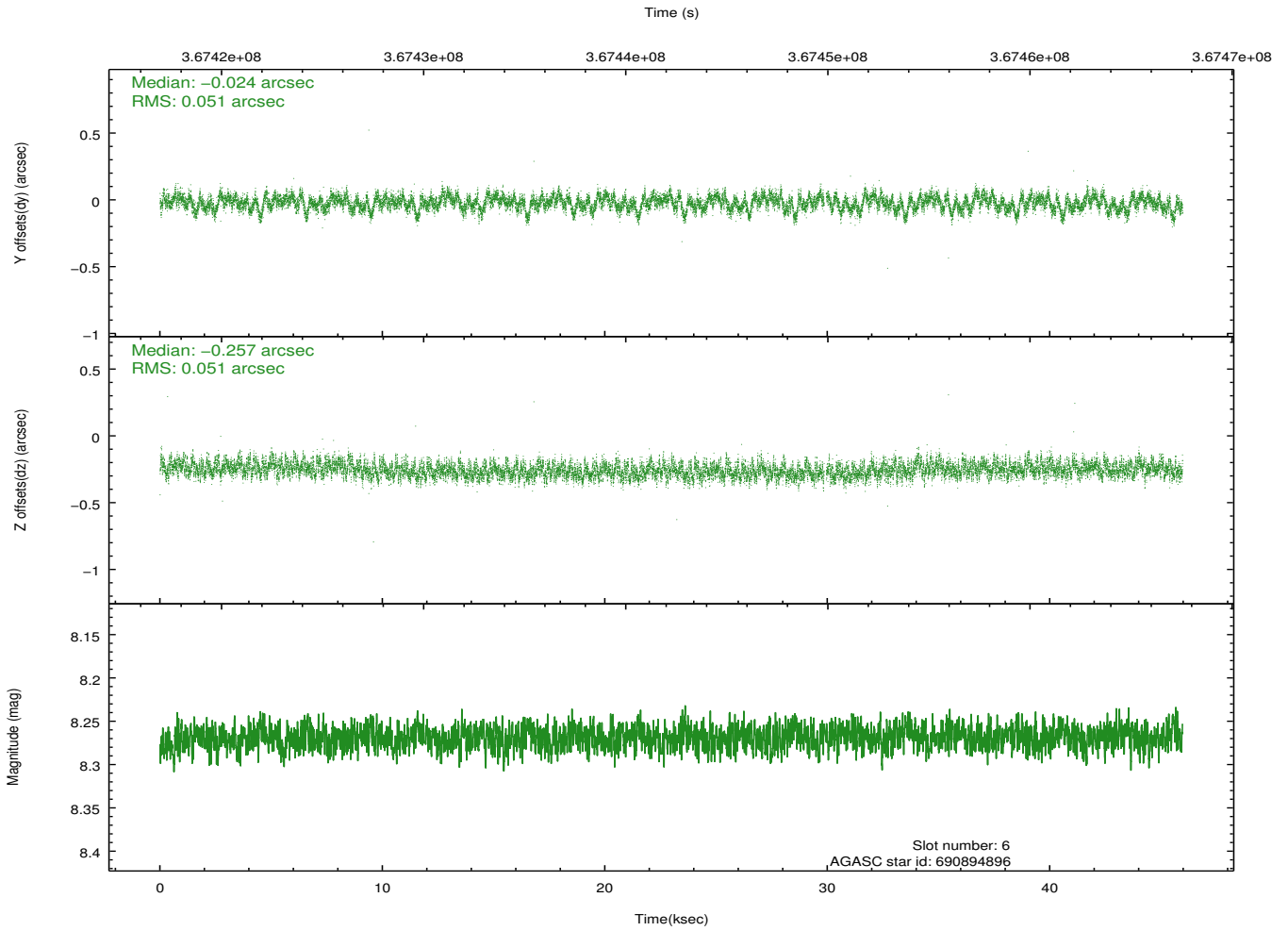
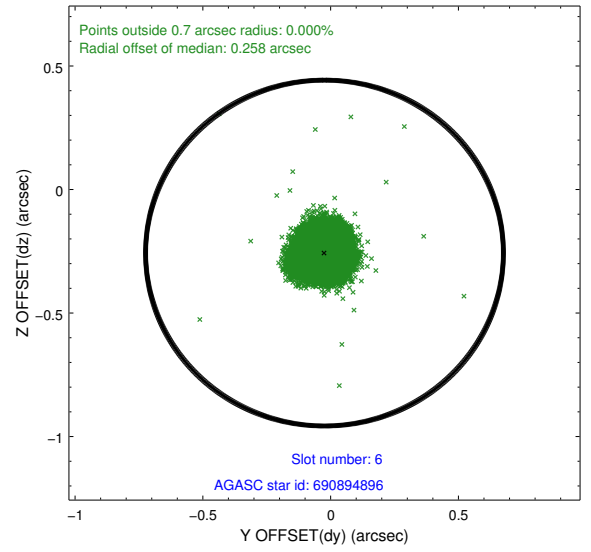
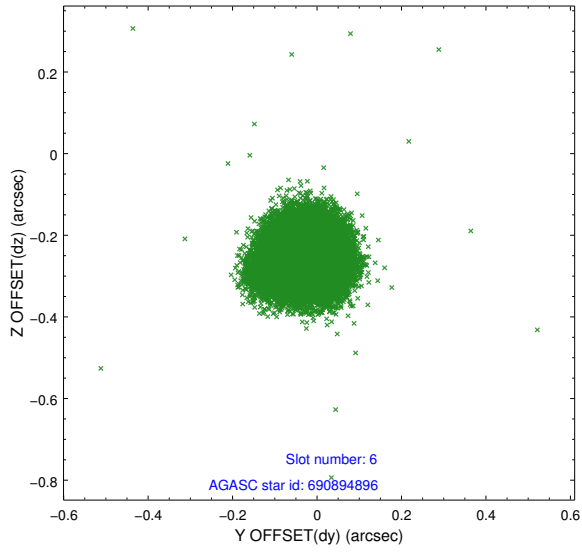
## 2.4.2 Slot 4



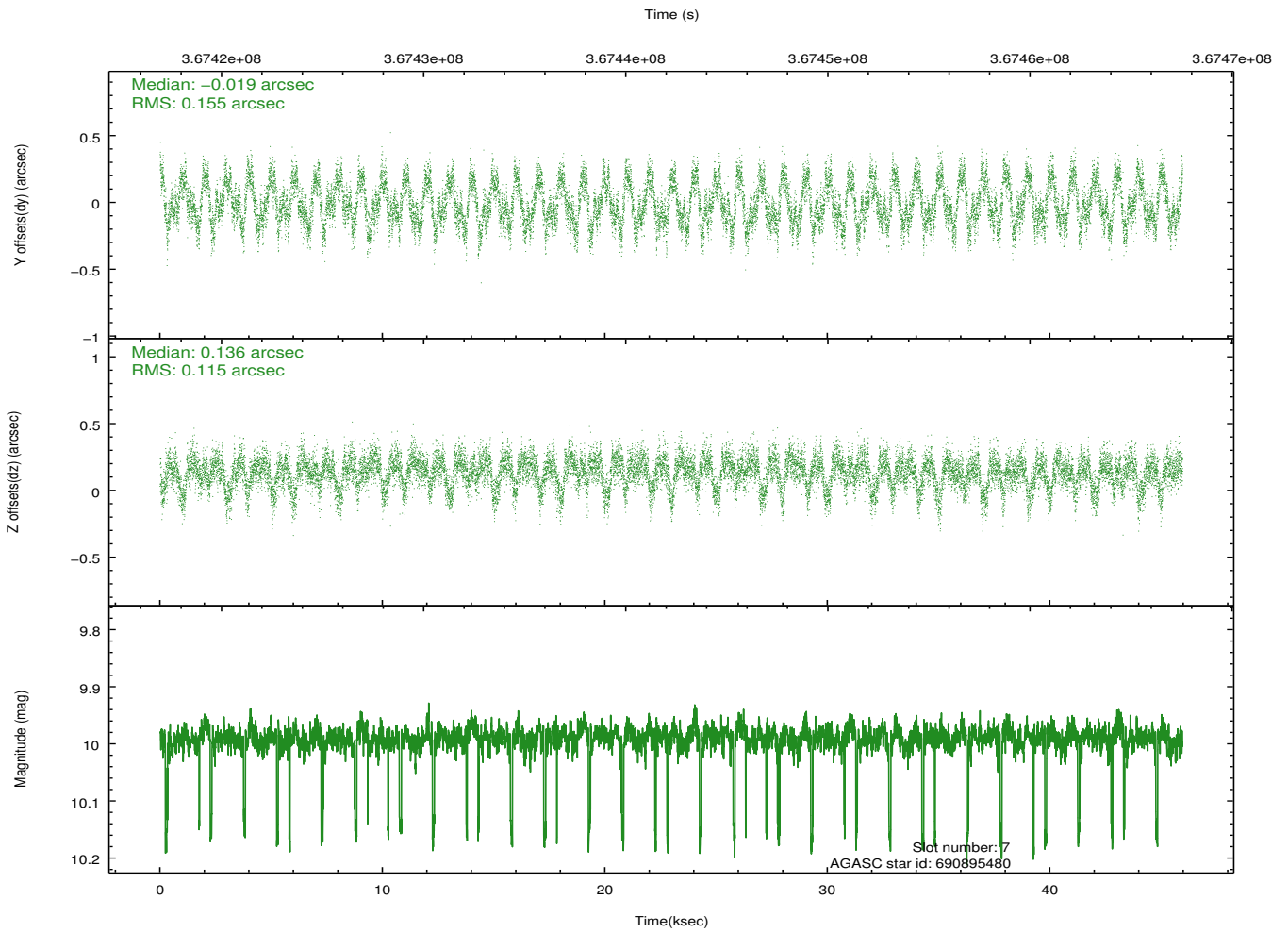
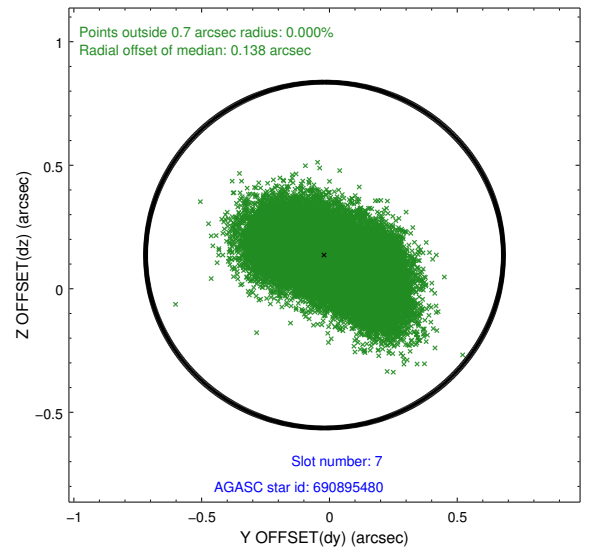
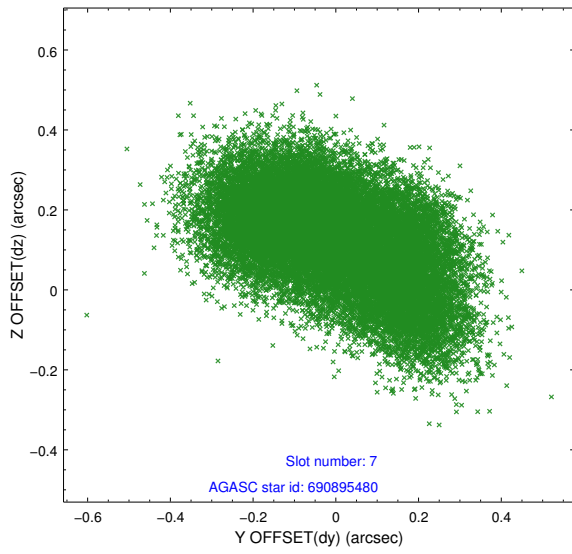
### 2.4.3 Slot 5



### 2.4.4 Slot 6

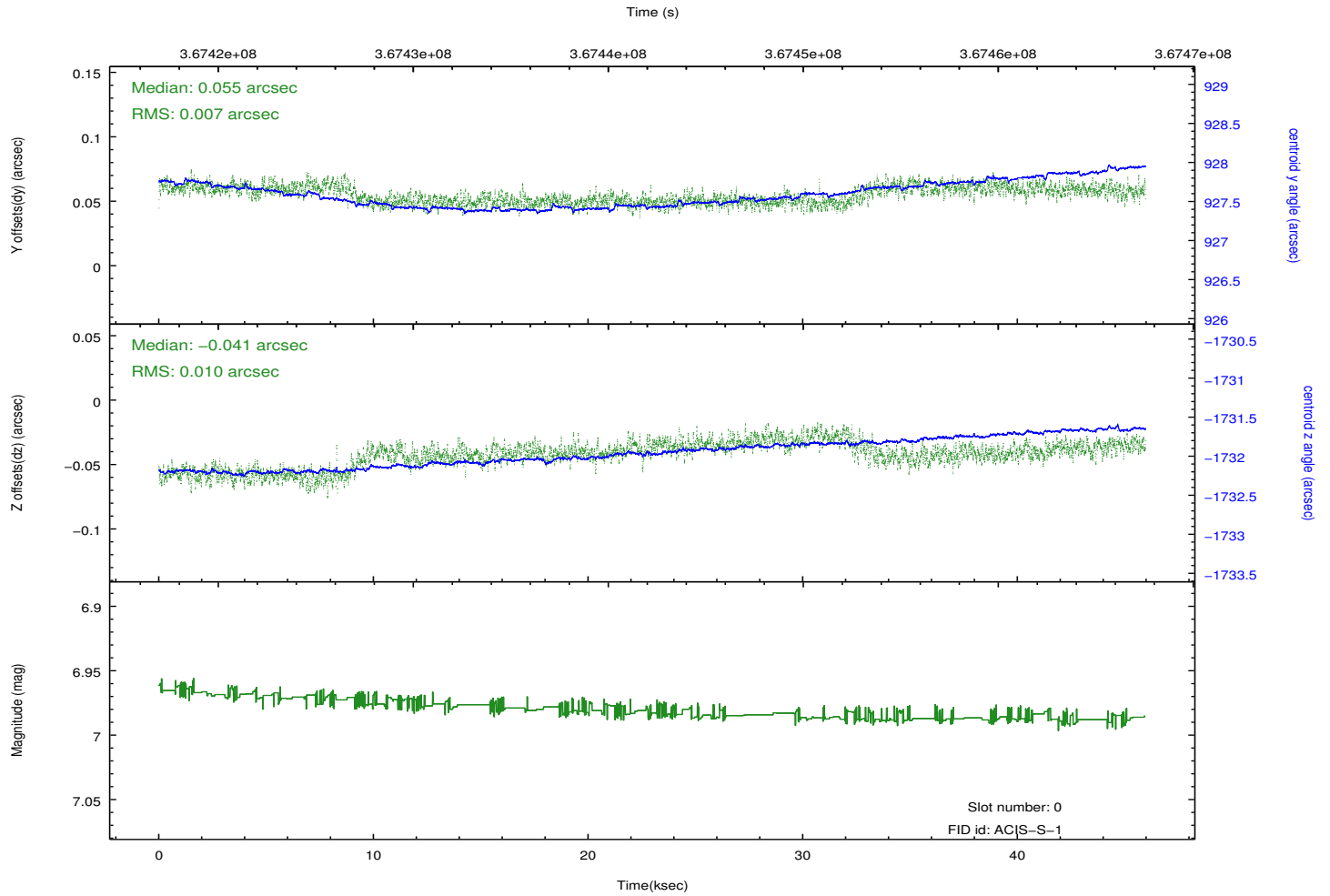
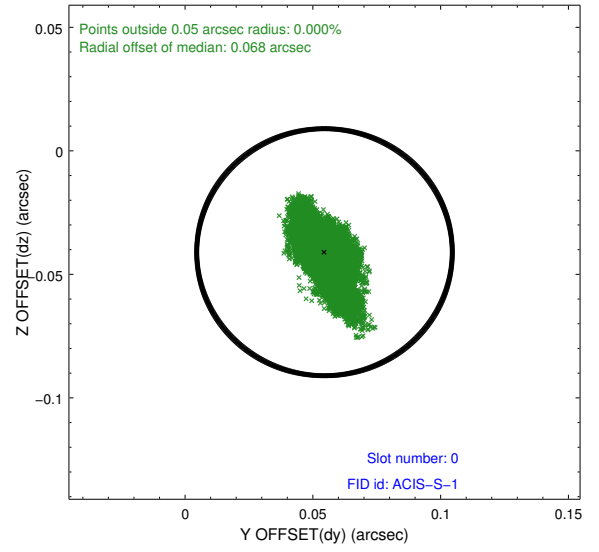
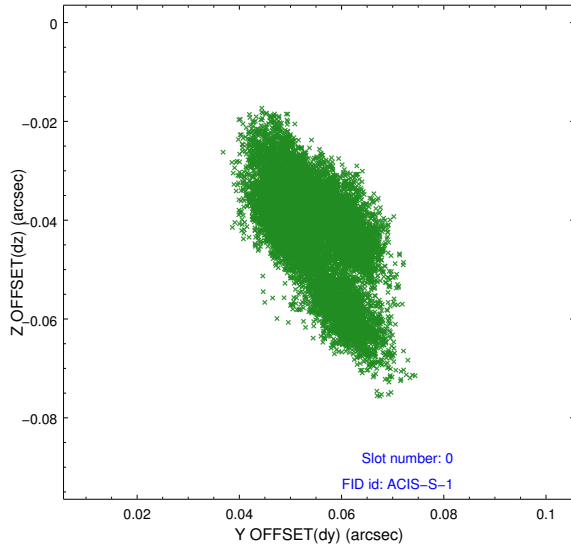


### 2.4.5 Slot 7

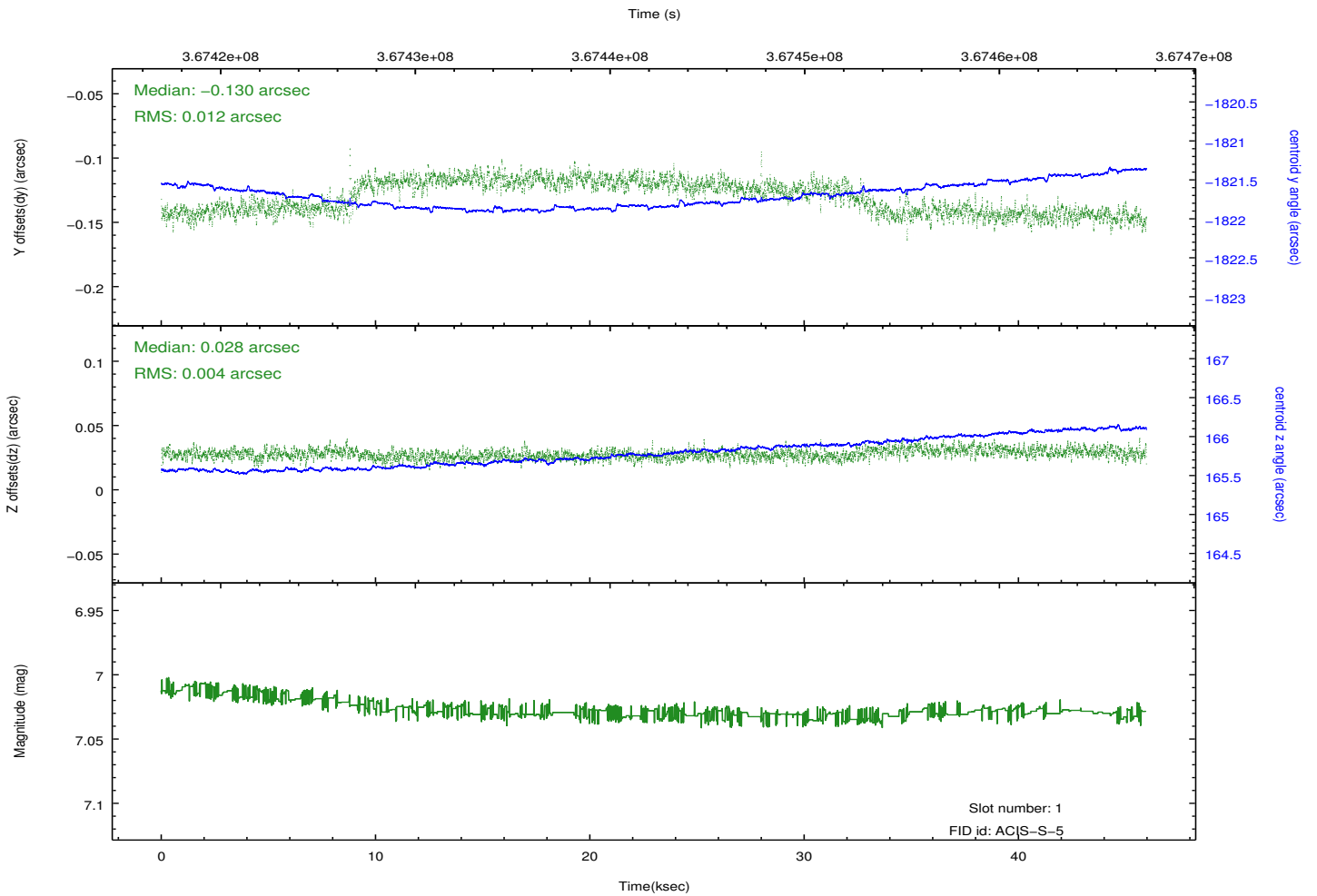
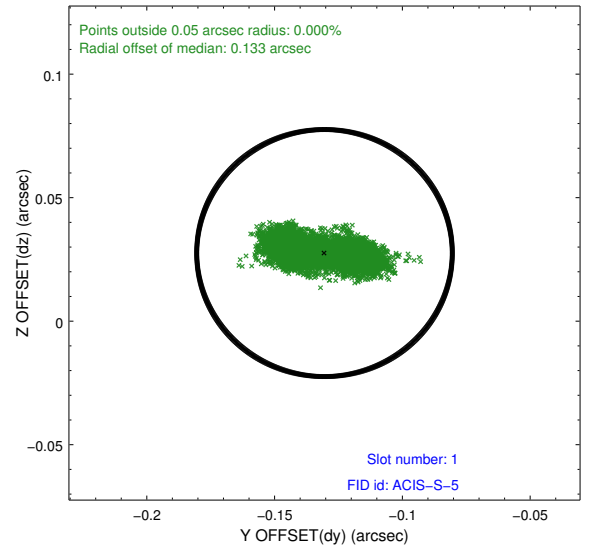
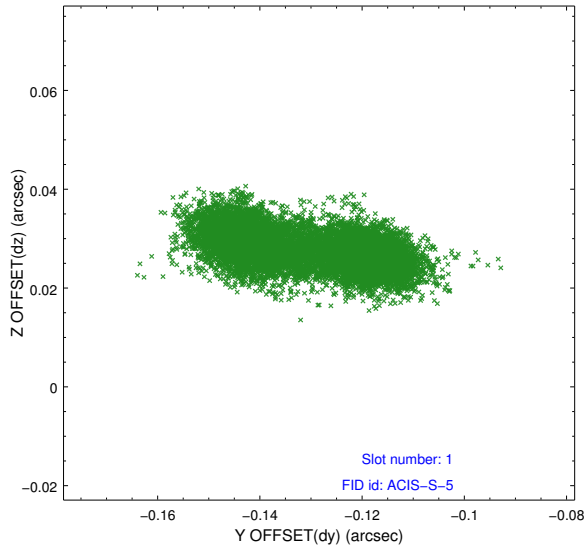


## 2.5 FID Slots

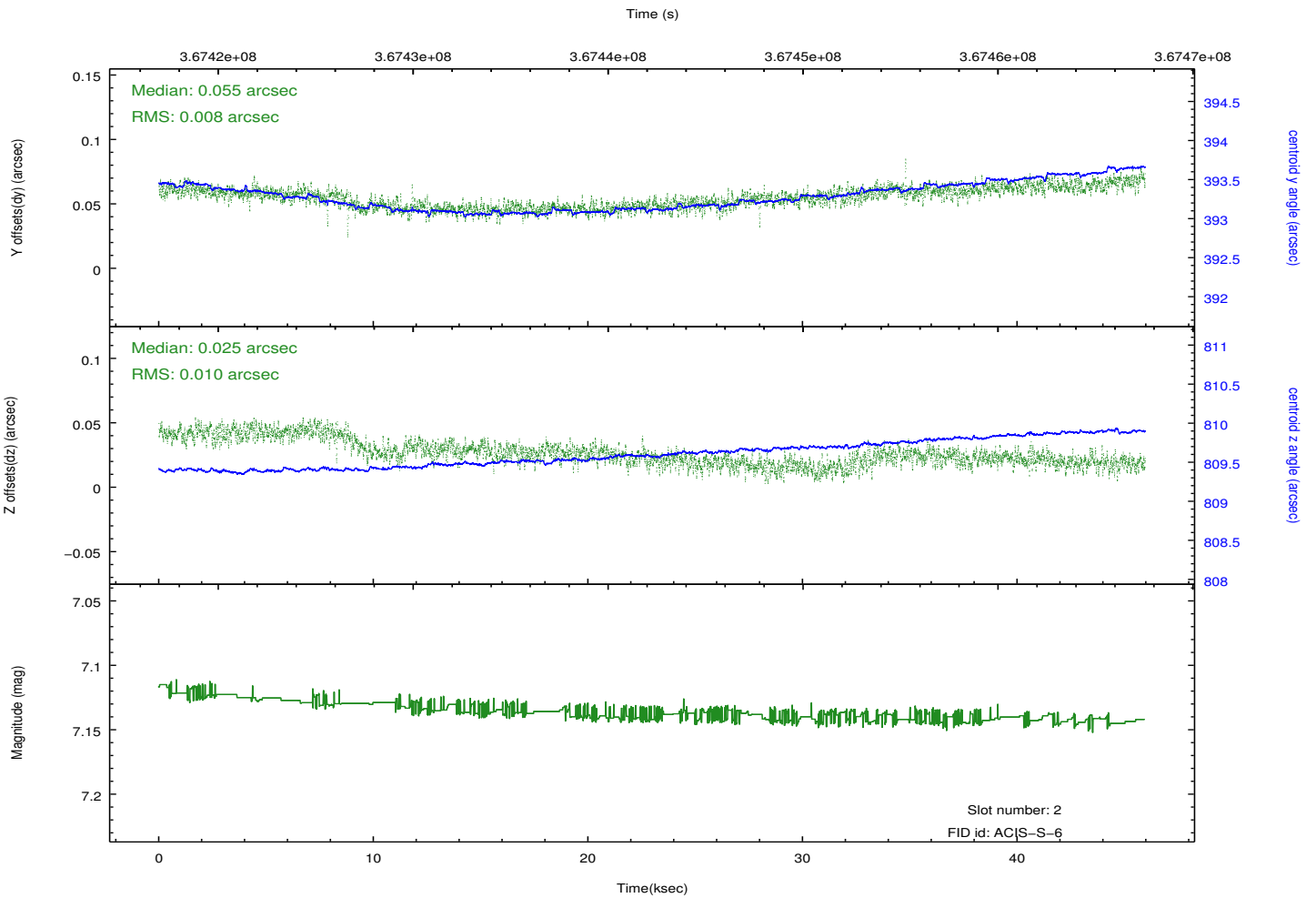
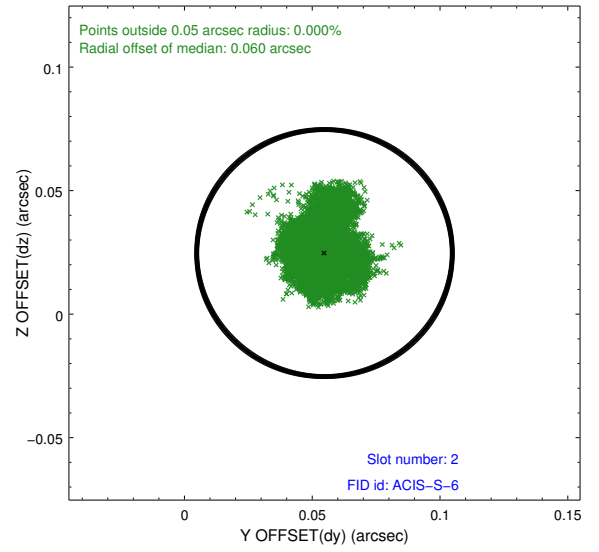
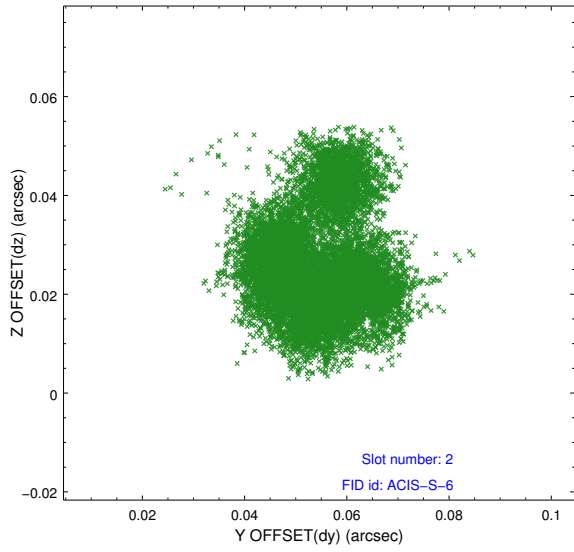
### 2.5.1 Slot 0



## 2.5.2 Slot 1



### 2.5.3 Slot 2



## A Summary

### A.1 Status

V&V Scientist	Jen Lauer
V&V Date (YYYY-MM-DD)	2012.06.14
V&V Edition	1
V&V Disposition and Status	OK
V&V Charge Time	45.045003861368

### A.2 Comments