

V&V Reference Report

L2 ASCDS Version : 8.4.5

Observation 11742 - L2 Version 2
Chandra X-Ray Center

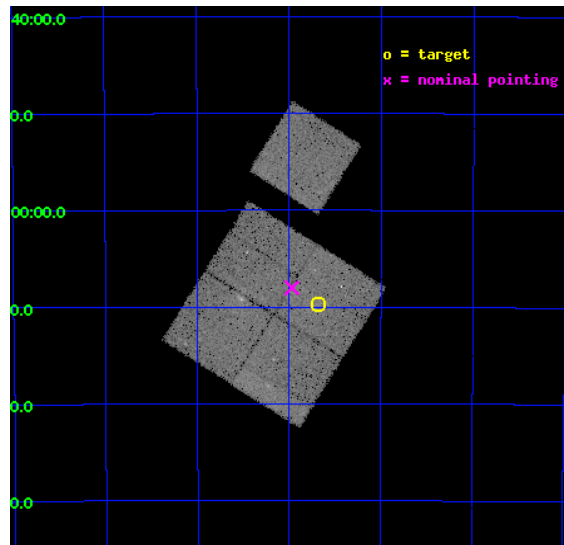
L2 Processing Date : Jun 12 2012

Contents

1	Front	2
2	OBI	3
2.1	OBI	3
2.1.1	Images	3
2.1.2	Bias	3
2.1.3	Parameters	4
2.1.4	Events	4
2.2	Compared Parameters	5
2.3	Aspect	6
2.4	Star Slots	9
2.4.1	Slot 3	9
2.4.2	Slot 4	10
2.4.3	Slot 5	11
2.4.4	Slot 6	12
2.4.5	Slot 7	13
2.5	FID Slots	14
2.5.1	Slot 0	14
2.5.2	Slot 1	15
2.5.3	Slot 2	16
A	Summary	17
A.1	Status	17
A.2	Comments	17

1 Front

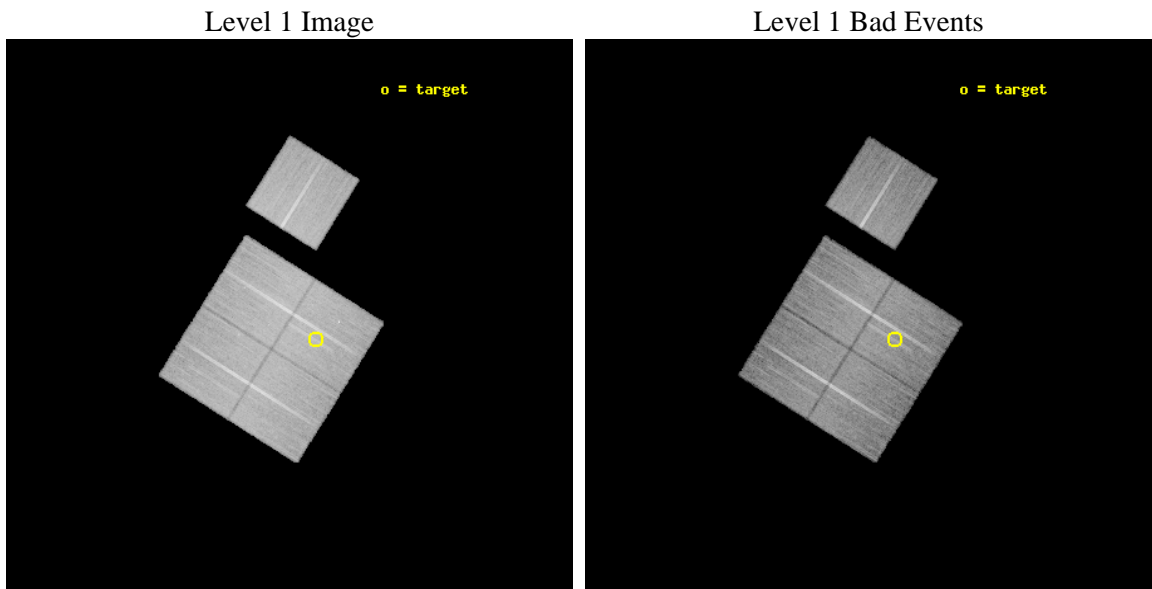
seq_num	800882	Sequence number
obs_id	11742	Observation id
title	Chandra Observations of a Complete Sample of SZE Selected Galaxy Clusters	Proposal title
observer	Dr Joseph Mohr	Principal investigator
object	SPT-CL 0000-5010	Source name
dtcycle	0	
cycle	P	events from which exps? Prim/Second/Both
ra_targ	359.919167	Observer's specified target RA [deg]
dec_targ	-50.161	Observer's specified target Dec [deg]
ra_nom	359.99255948969	Nominal RA [deg]
dec_nom	-50.133695161954	Nominal Dec [deg]
roll_nom	32.181536477986	Nominal Roll [deg]
revision	2	Processing version of data
ontime	22766.359174788	Sum of GTIs [s]
livetime	22468.89993182	Livetime [s]
ontime0	22763.21815449	Sum of GTIs [s]
ontime1	22766.35915488	Sum of GTIs [s]
ontime2	22766.359174788	Sum of GTIs [s]
ontime3	22766.359174788	Sum of GTIs [s]
ontime6	22760.077164114	Sum of GTIs [s]
l2events	88535	Number of level 2 events



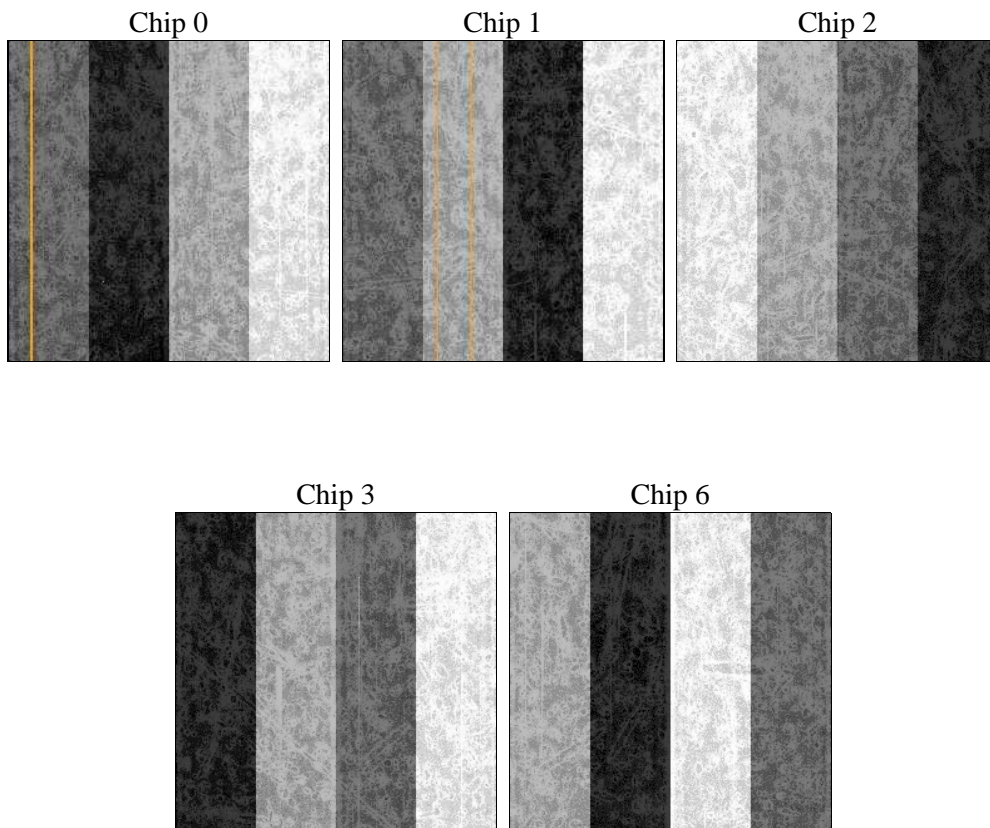
2 OBI

2.1 OBI

2.1.1 Images



2.1.2 Bias



2.1.3 Parameters

obi_num	2	Obi number	sched_exp_time	23000.000000	[s] Scheduled observation exposure time
ascdsver	8.4.5	Processing system revision	ontime	22766.359174788	Sum of GTIs [s]
caldbver	4.4.10	 	ontime0	22763.21815449	Sum of GTIs [s]
date	2012-06-12T14:14:03	Date and time of file creation	ontime1	22766.35915488	Sum of GTIs [s]
revision	2	Processing version of data	ontime2	22766.359174788	Sum of GTIs [s]
			ontime3	22766.359174788	Sum of GTIs [s]
			ontime6	22760.077164114	Sum of GTIs [s]
			l1events	982139	Number of level 1 events

2.1.4 Events

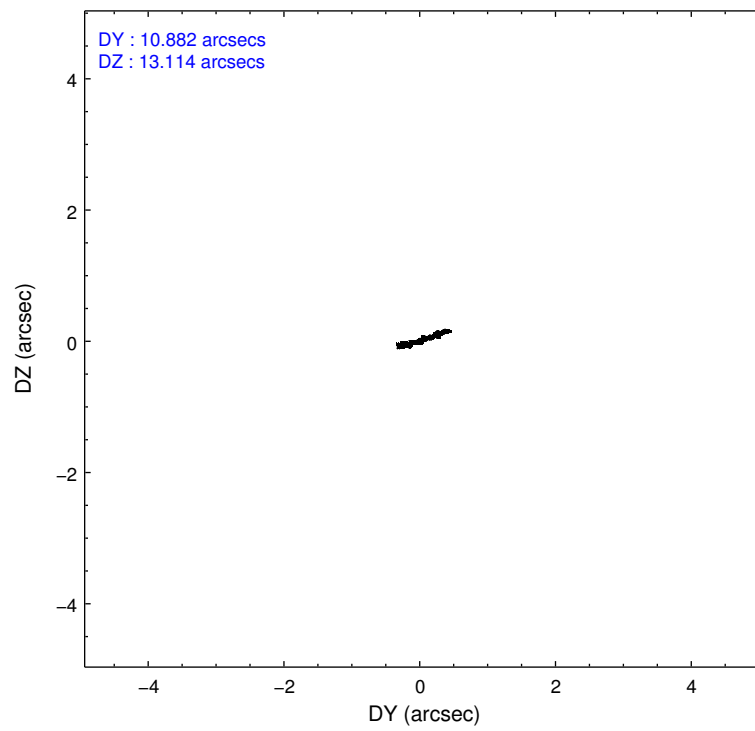
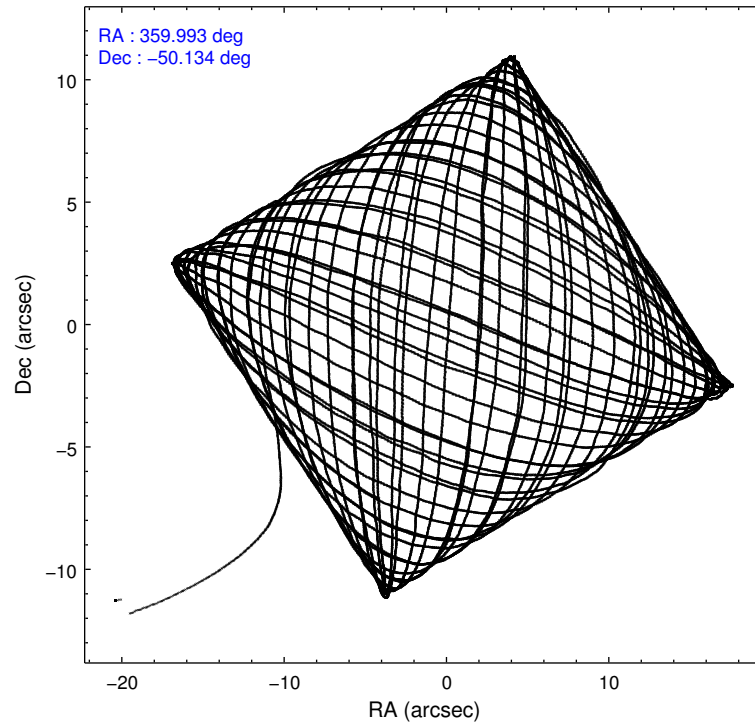
	ccd 0	ccd 1	ccd 2	ccd 3	ccd 6
level 1 events	185517	186534	213111	198182	198795
rejected events	164011	163766	192443	177774	178131
rejected %	88%	87%	90%	89%	89%

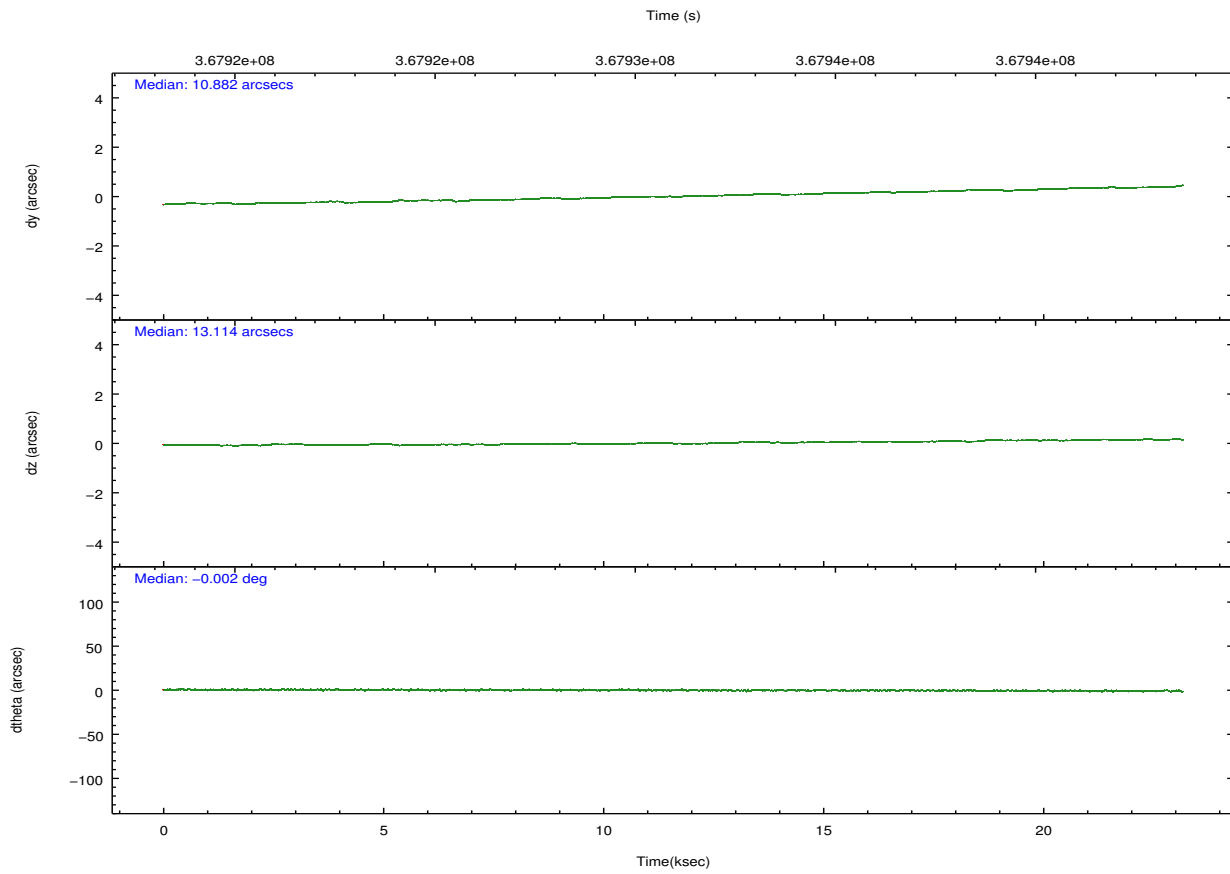
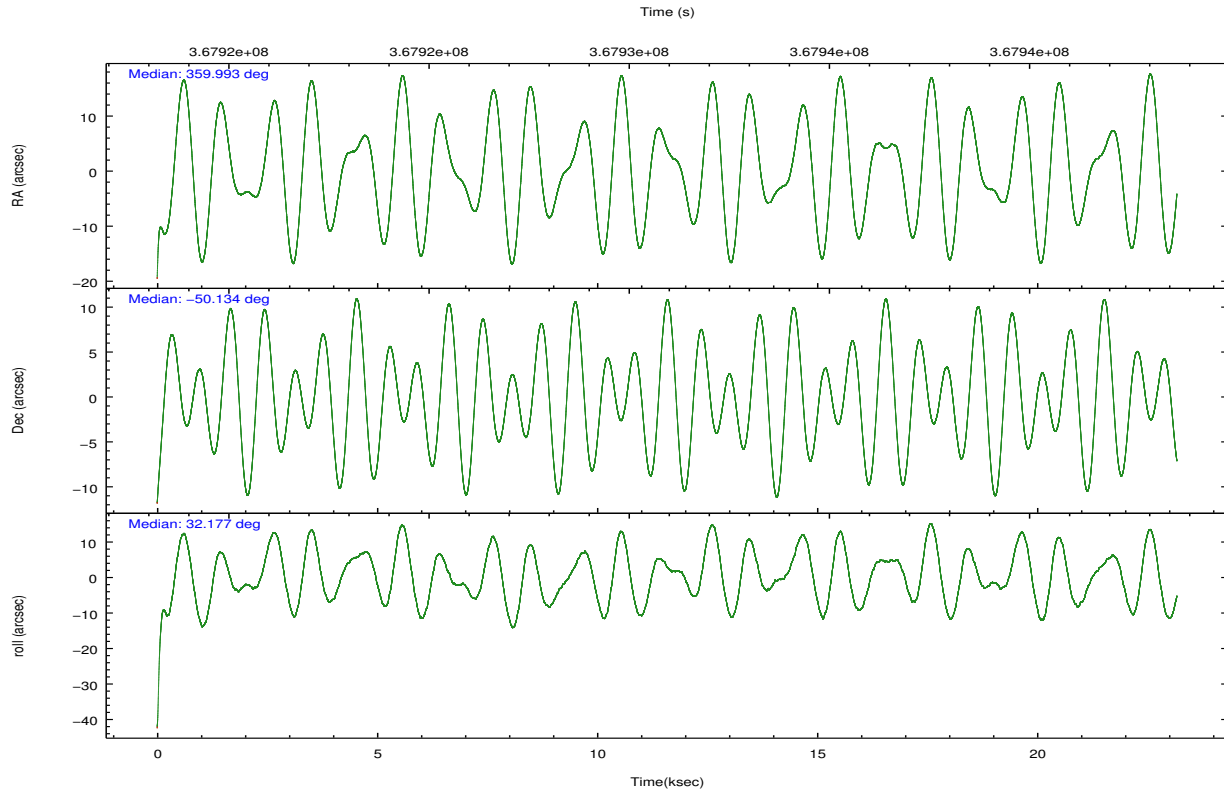
	ccd 0	ccd 1	ccd 2	ccd 3	ccd 6
grade 0 events	8019	8118	7693	7798	7011
	4%	4%	3%	3%	3%
grade 1 events	124	115	134	133	110
	0%	0%	0%	0%	0%
grade 2 events	5015	5232	4944	4295	4549
	2%	2%	2%	2%	2%
grade 3 events	2212	2413	2122	2217	2265
	1%	1%	0%	1%	1%
grade 4 events	2186	2386	2201	2140	2271
	1%	1%	1%	1%	1%
grade 5 events	7222	7938	6797	8190	7794
	3%	4%	3%	4%	3%
grade 6 events	4081	4623	3717	3969	4579
	2%	2%	1%	2%	2%
grade 7 events	156658	155709	185503	169440	170216
	84%	83%	87%	85%	85%

2.2 Compared Parameters

Parameter	Planned	Actual	Parameter	Planned	Actual
Instrument	ACIS	ACIS	Obspar format version number	7	7
Detector	ACIS-01236	ACIS-01236	Obspar file type	PREDICTED	ACTUAL
Grating	NONE	NONE	Obspar update status	NONE	UPDATED
Data mode	VFAINT	VFAINT	CCD I0 on	Y	Y
Observation mode	POINTING	POINTING	CCD I1 on	Y	Y
[deg] Pointing RA	359.972716	359.9925594896857	CCD I2 on	Y	Y
[deg] Pointing Dec	-50.158068	-50.1336951619537	CCD I3 on	Y	Y
[deg] Pointing Roll	31.957625	32.18153647798603	CCD S0 on	N	N
[mm] SIM focus pos	-0.782348	-0.7809083437167272	CCD S1 on	N	N
[mm] SIM defocus	0	0.001439871863259334	CCD S2 on	O1	Y
[mm] SIM translation stage pos	-225.840463	-225.8458576473255	CCD S3 on	N	N
[mm] SIM translation stage offset	-7.752	-7.746595355604228	CCD S4 on	N	N
[s] Observation start time (MET)	367919523.184000	367918392.79422	CCD S5 on	N	N
Observation start date	2009-08-29T07:50:57	2009-08-29T07:33:12	Number of optional ACIS chips dropped	0	0
[s] Observation end time (MET)	367942523.184000	367944013.6955	On-chip summing requested	N	N
Observation end date	2009-08-29T14:14:17	2009-08-29T14:40:13	Subarray requested	NONE	NONE
Read mode	TIMED	TIMED	Alternating exposures requested	N	N
			[s] Primary exposure time	0.000000	3.1

2.3 Aspect



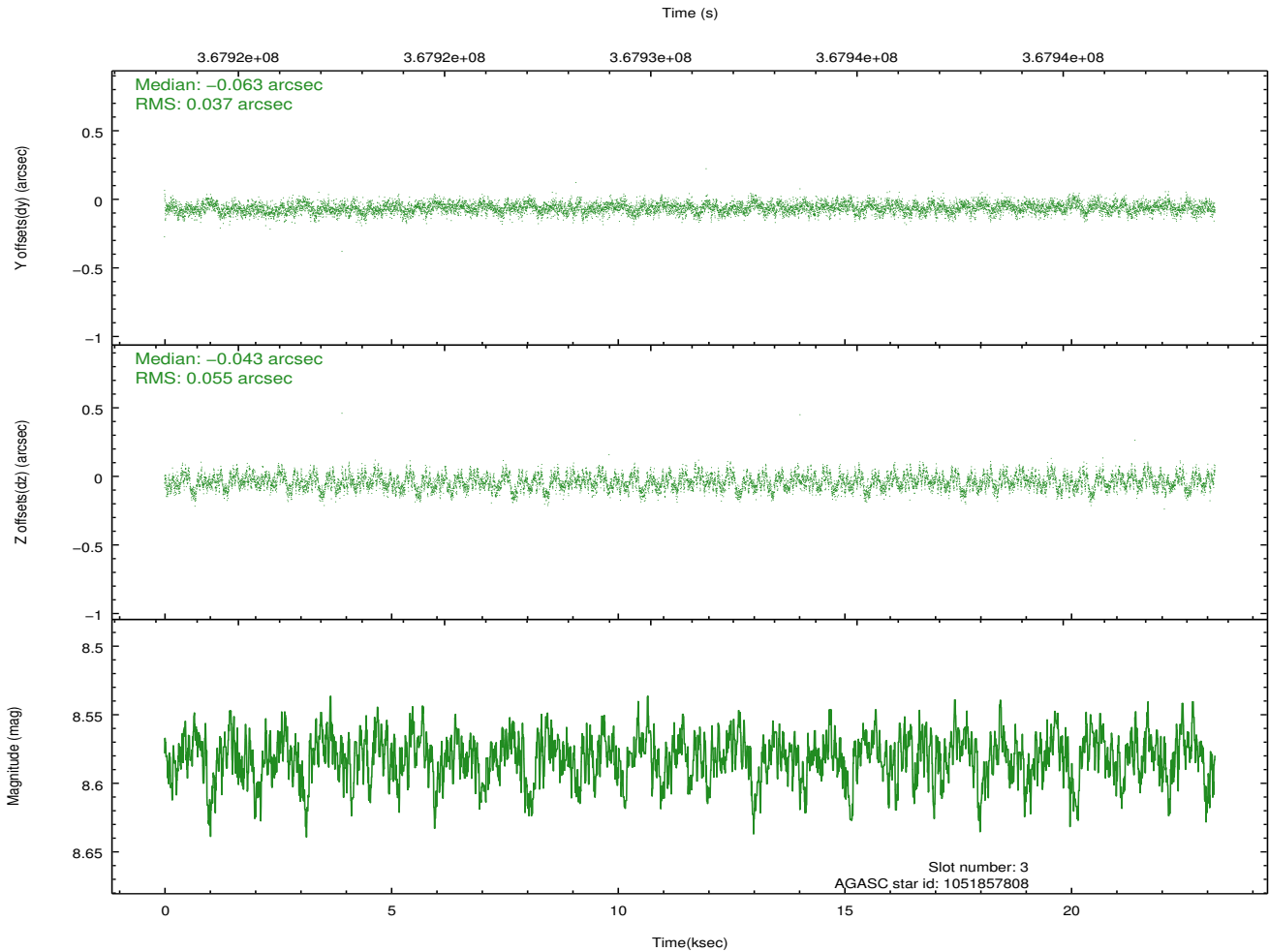
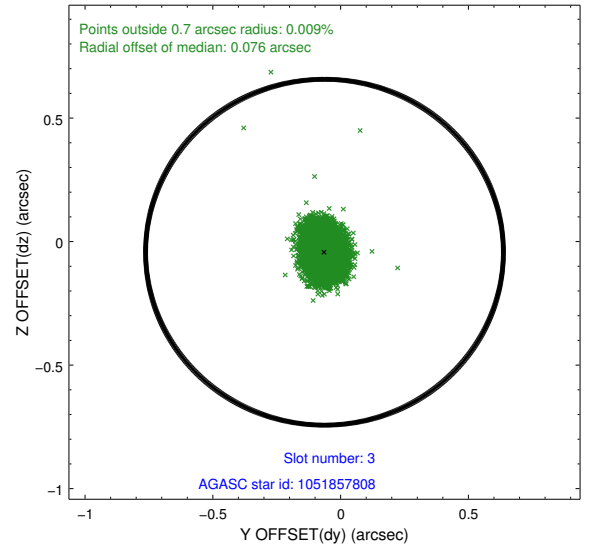
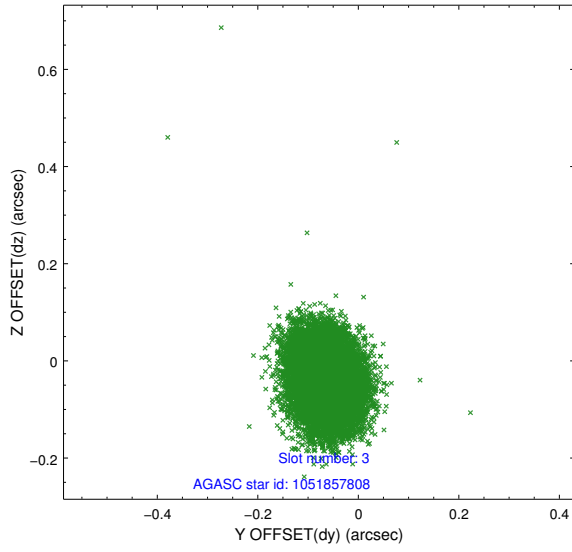


Slot Statistics

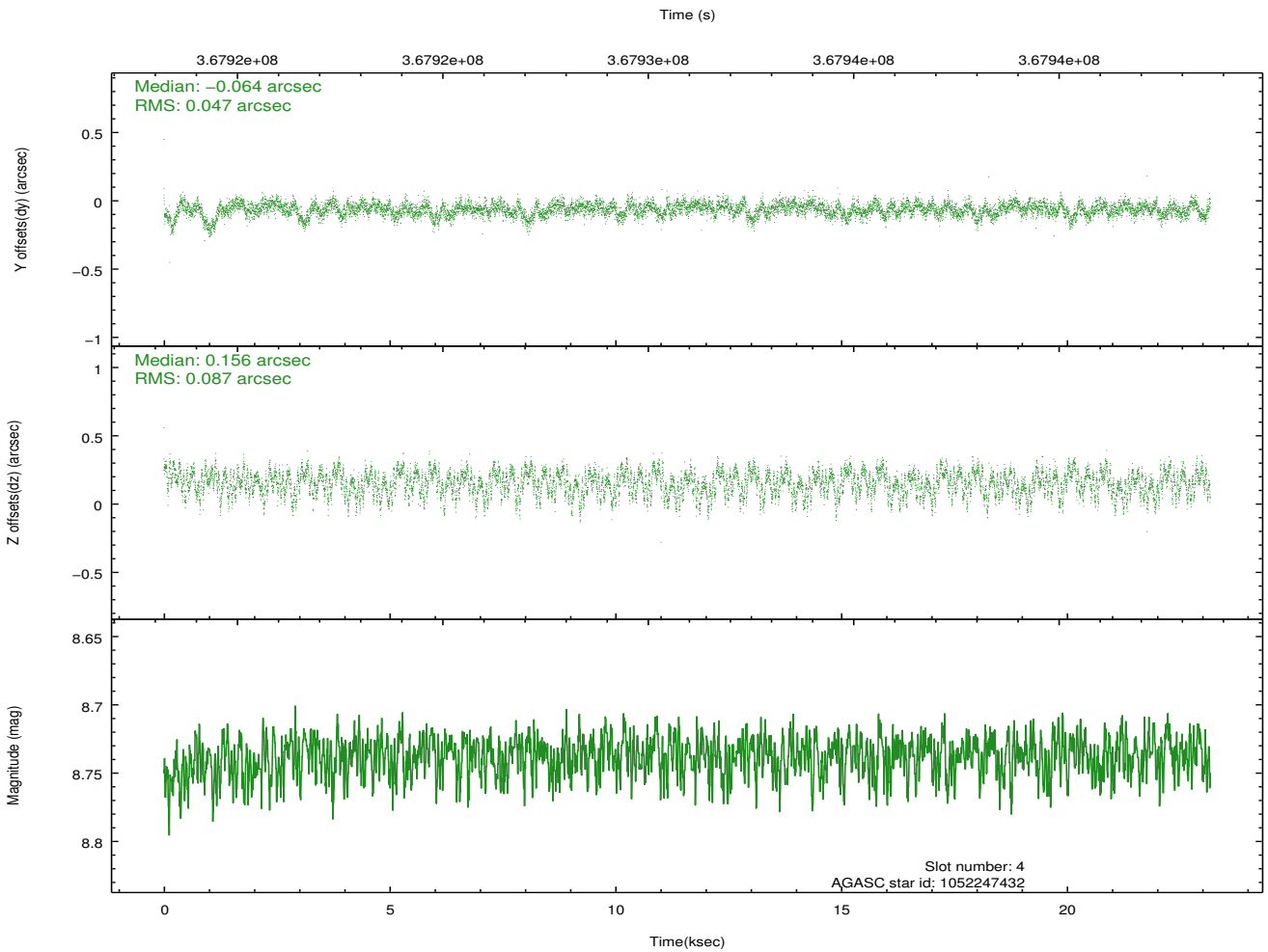
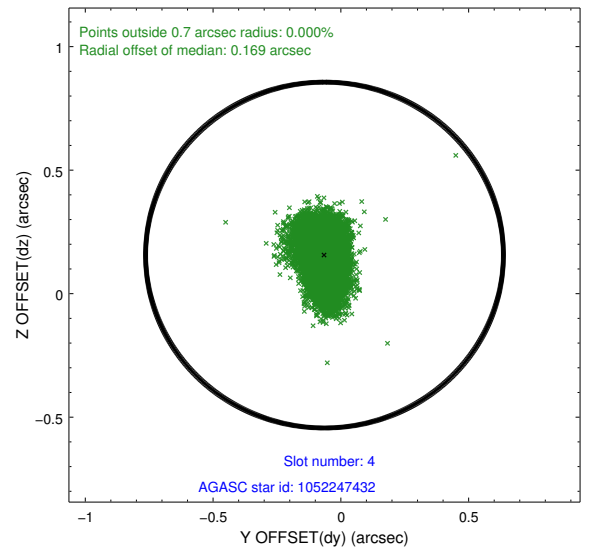
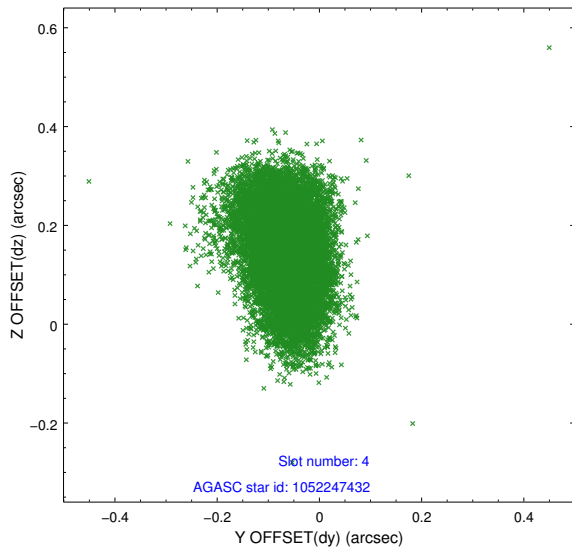
slot	status	id	mag	n_pts	med_dy	med_dz	dr1	dr2	ra	dec	mean_y	mean_z
0	FID	ACIS-I-1	7.02	5653	0.128	-0.100	0.007	0.013	0.000000	0.000000	928.67	-995.81
1	FID	ACIS-I-5	7.00	5651	-0.265	0.109	0.009	0.016	0.000000	0.000000	-1819.78	901.77
2	FID	ACIS-I-6	7.03	5653	0.046	0.063	0.007	0.011	0.000000	0.000000	393.95	1546.41
3	GUIDE	1051857808	8.58	11303	-0.063	-0.043	0.069	0.113	0.070117	-49.352265	1729.09	2340.47
4	GUIDE	1052247432	8.74	11300	-0.064	0.156	0.104	0.175	0.036415	-50.866976	-1227.15	-2241.44
5	GUIDE	1052249696	6.91	11306	0.197	-0.132	0.055	0.086	0.223276	-50.446456	-62.39	-1185.90
6	GUIDE	1109269688	7.60	11304	-0.055	0.044	0.065	0.107	358.848458	-50.113922	-2128.40	1491.90
7	GUIDE	1109269904	8.41	11294	-0.014	-0.018	0.063	0.101	359.567113	-50.130971	-743.33	575.48

2.4 Star Slots

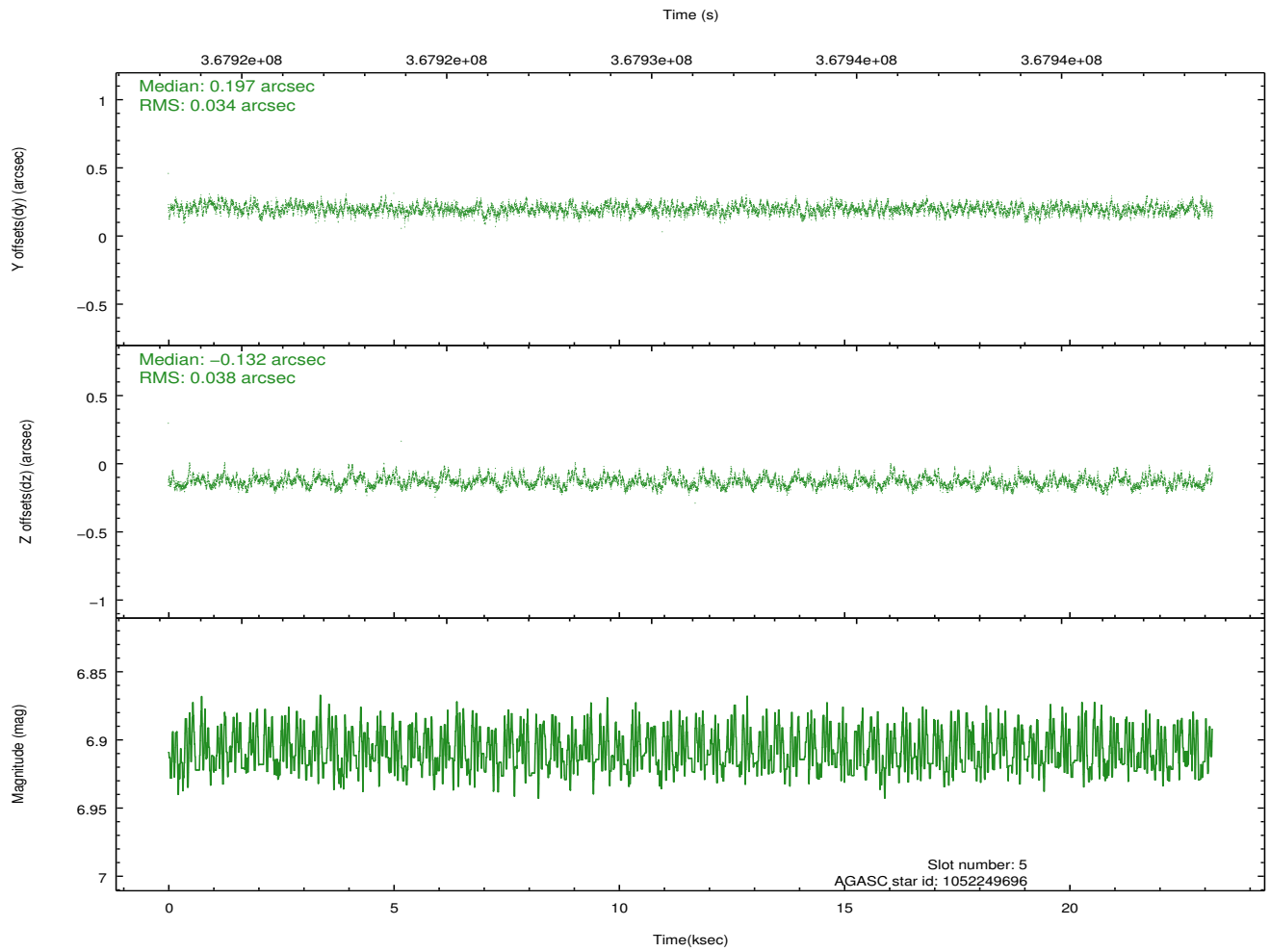
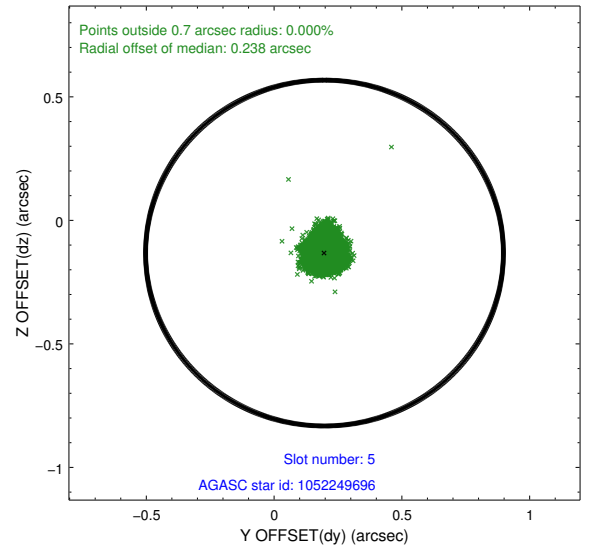
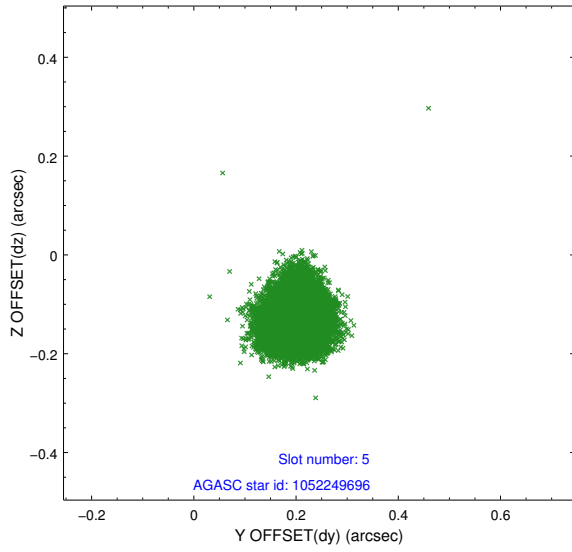
2.4.1 Slot 3



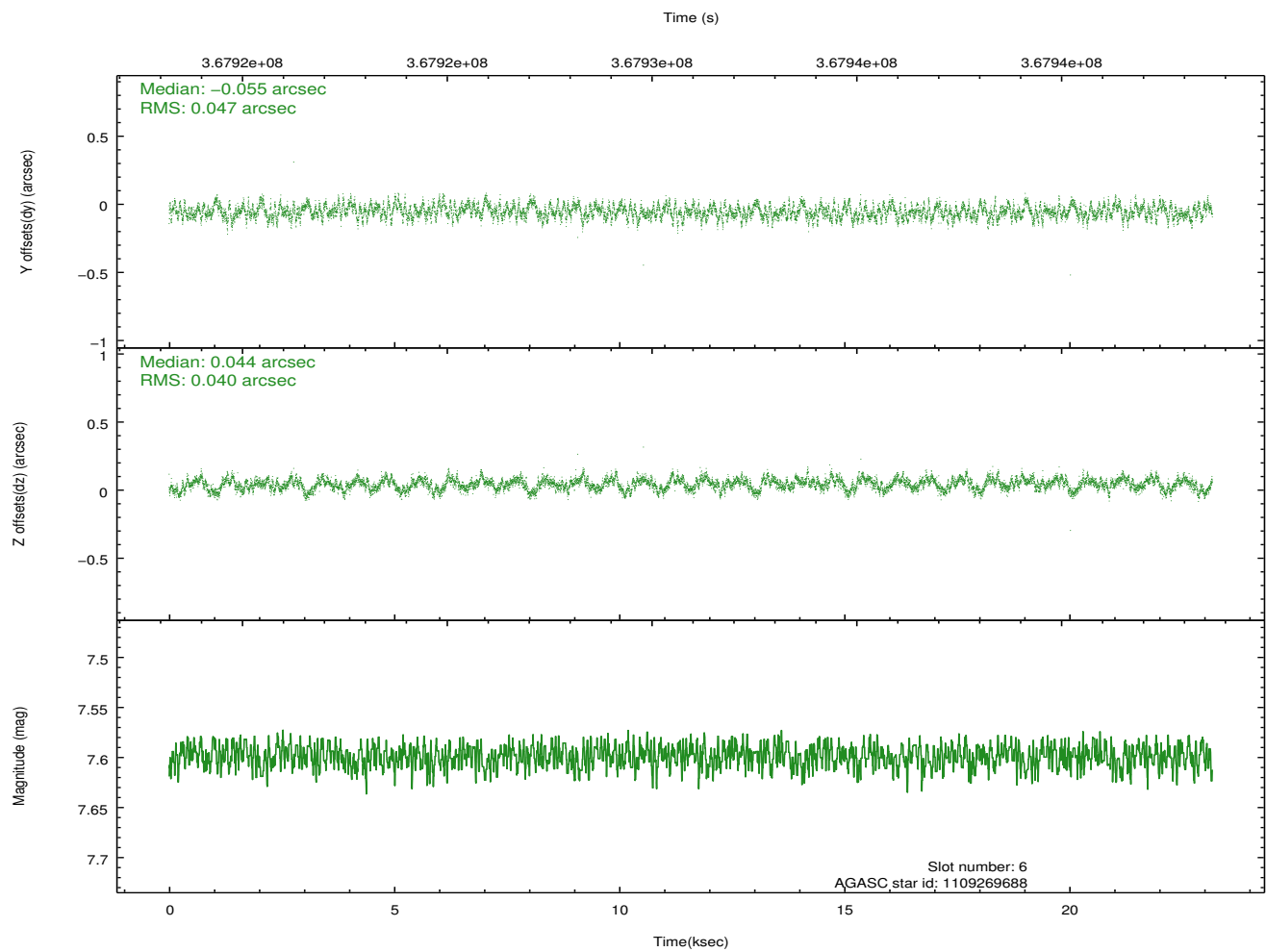
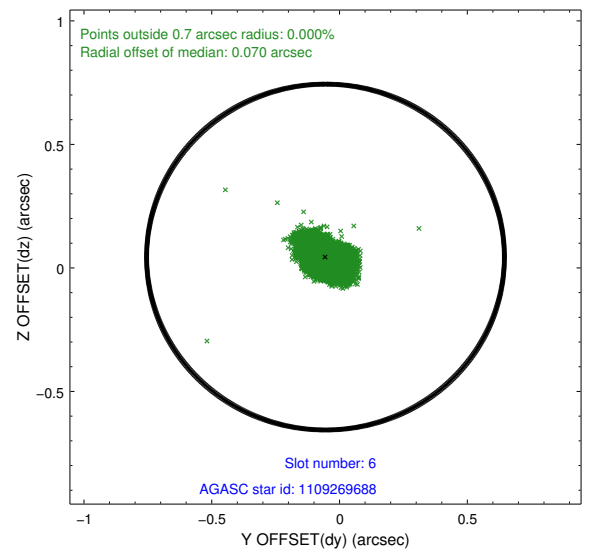
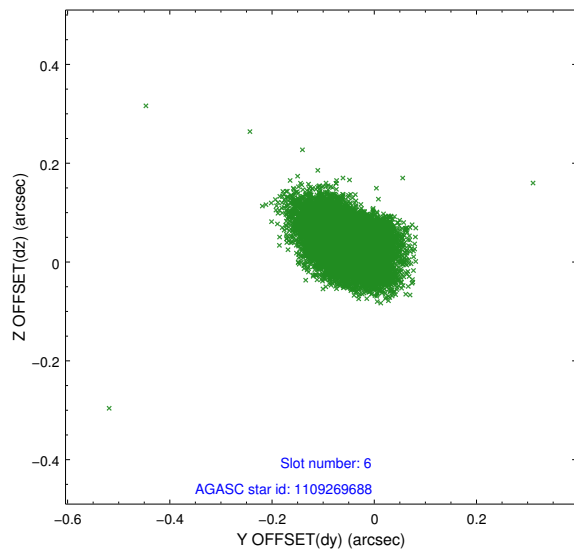
2.4.2 Slot 4



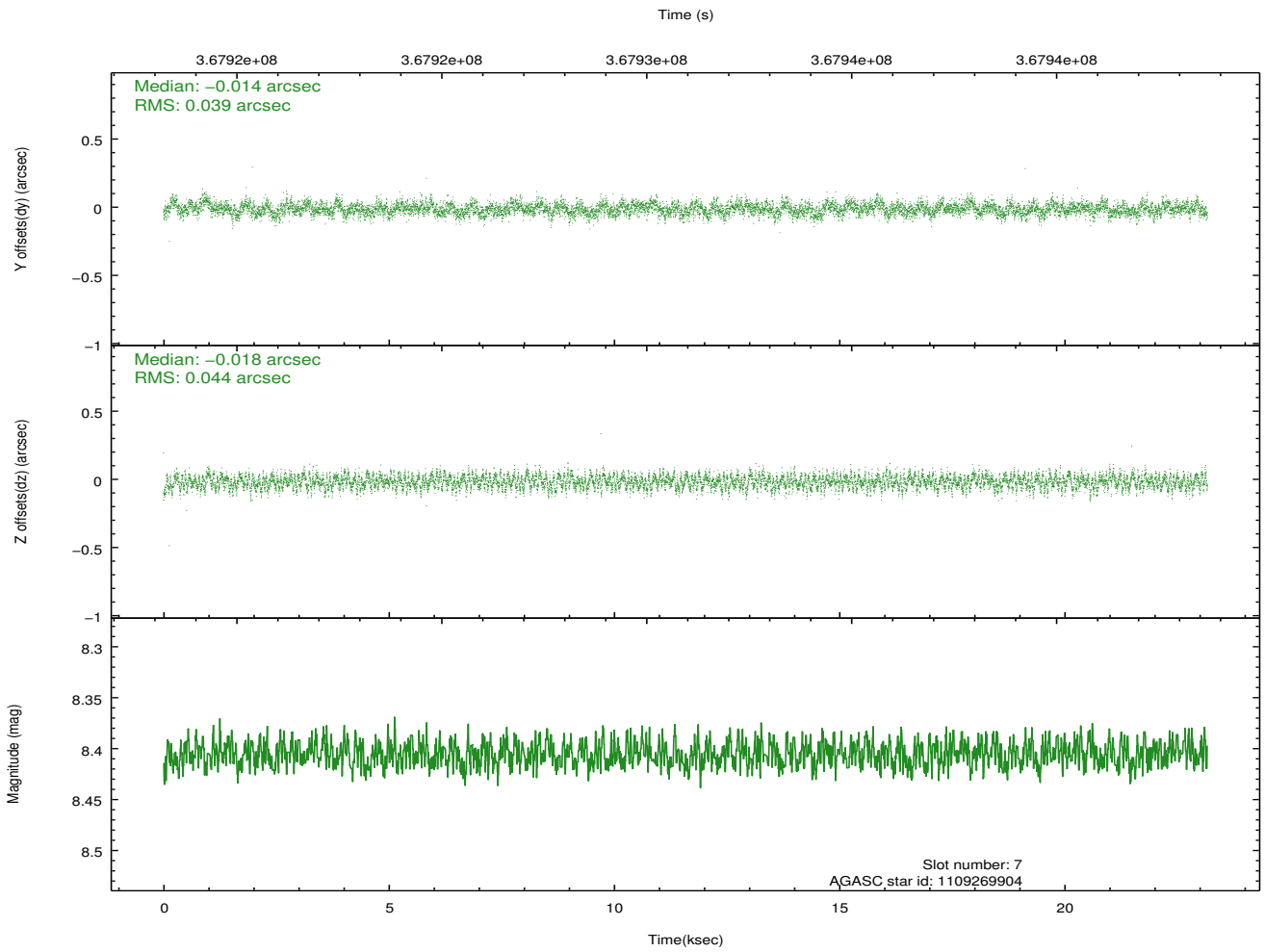
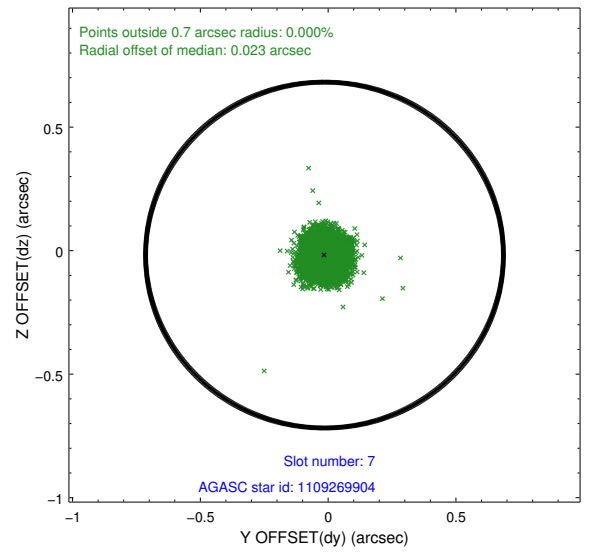
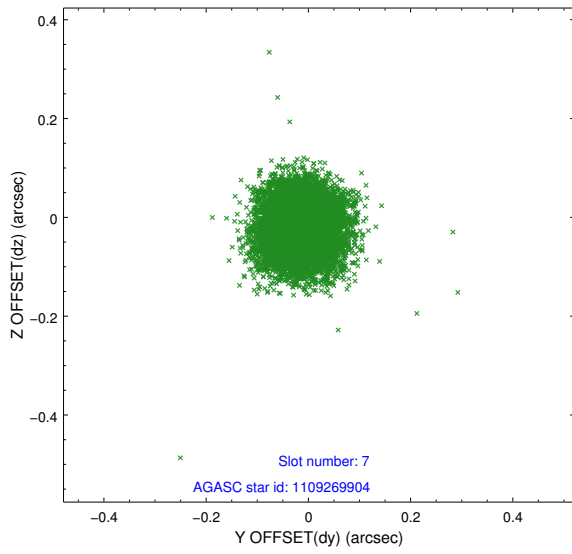
2.4.3 Slot 5



2.4.4 Slot 6

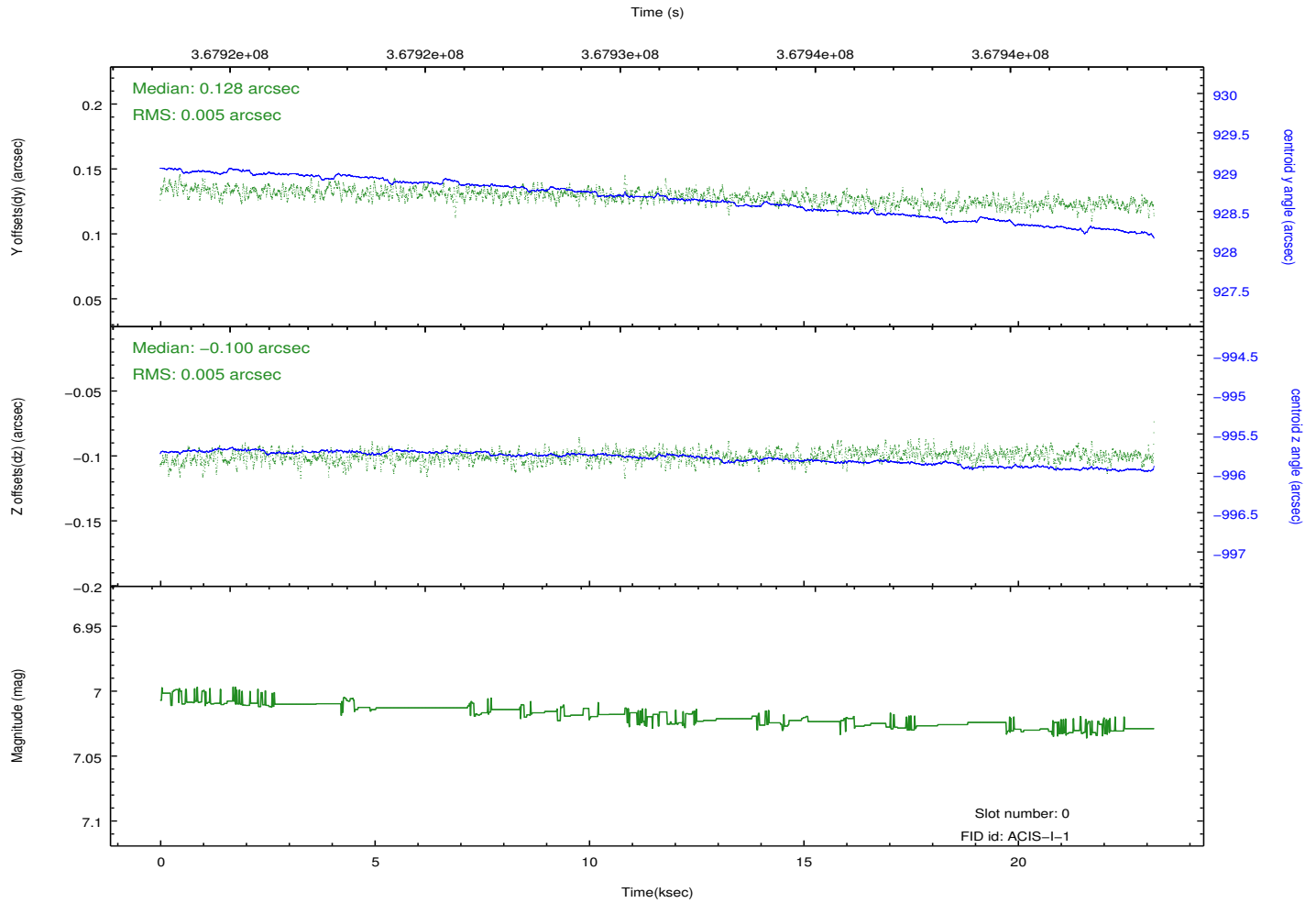
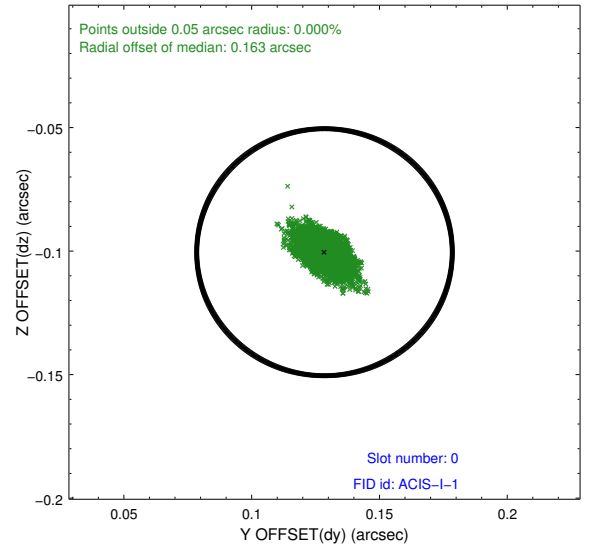
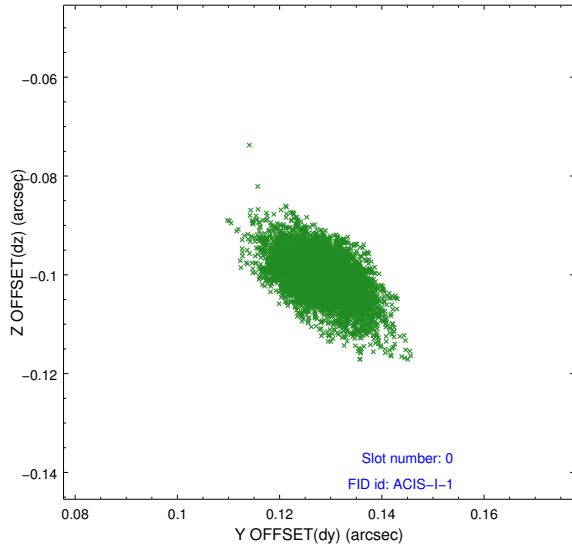


2.4.5 Slot 7

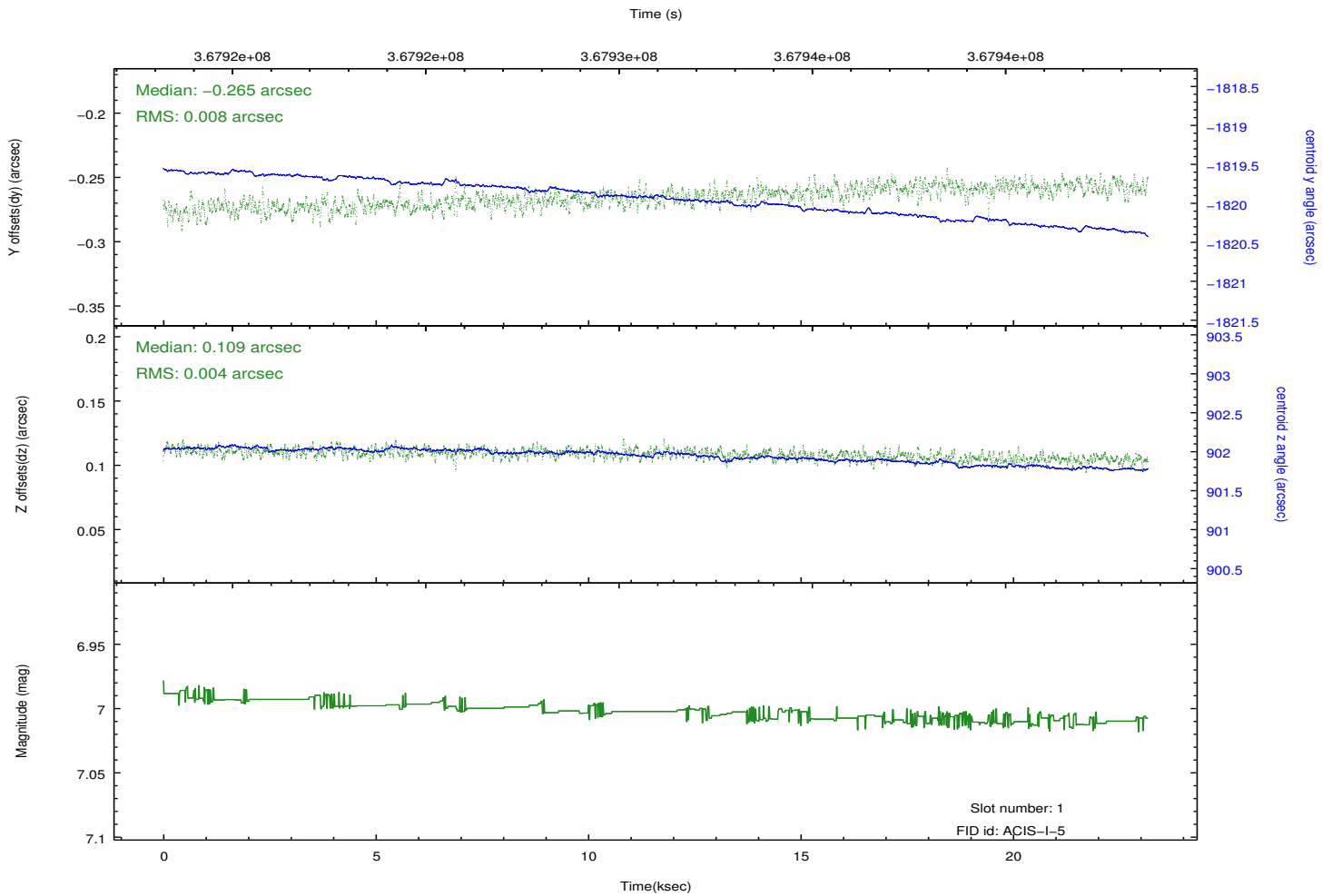
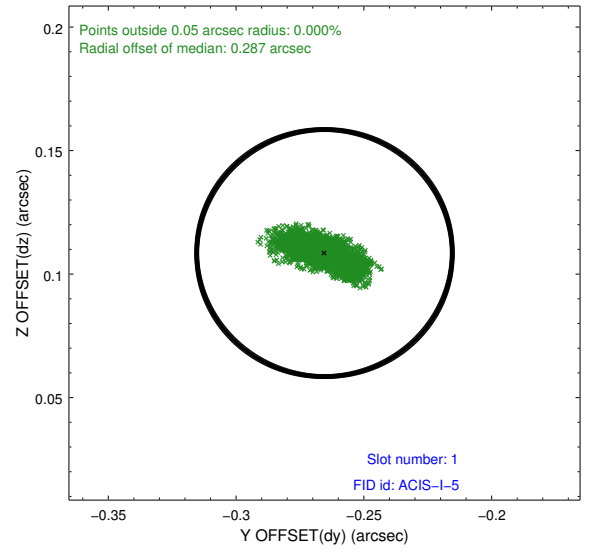
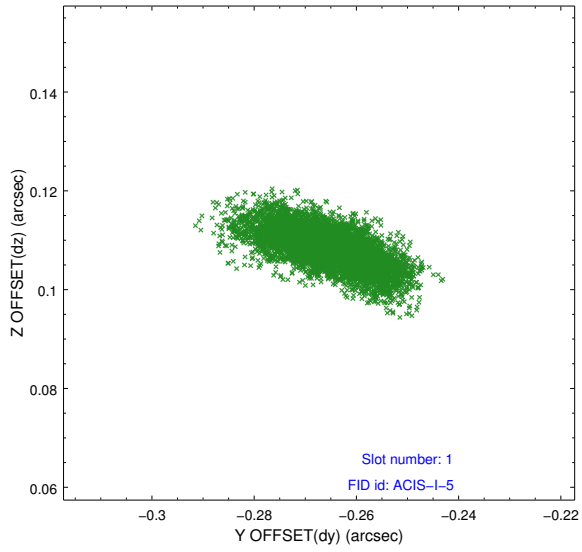


2.5 FID Slots

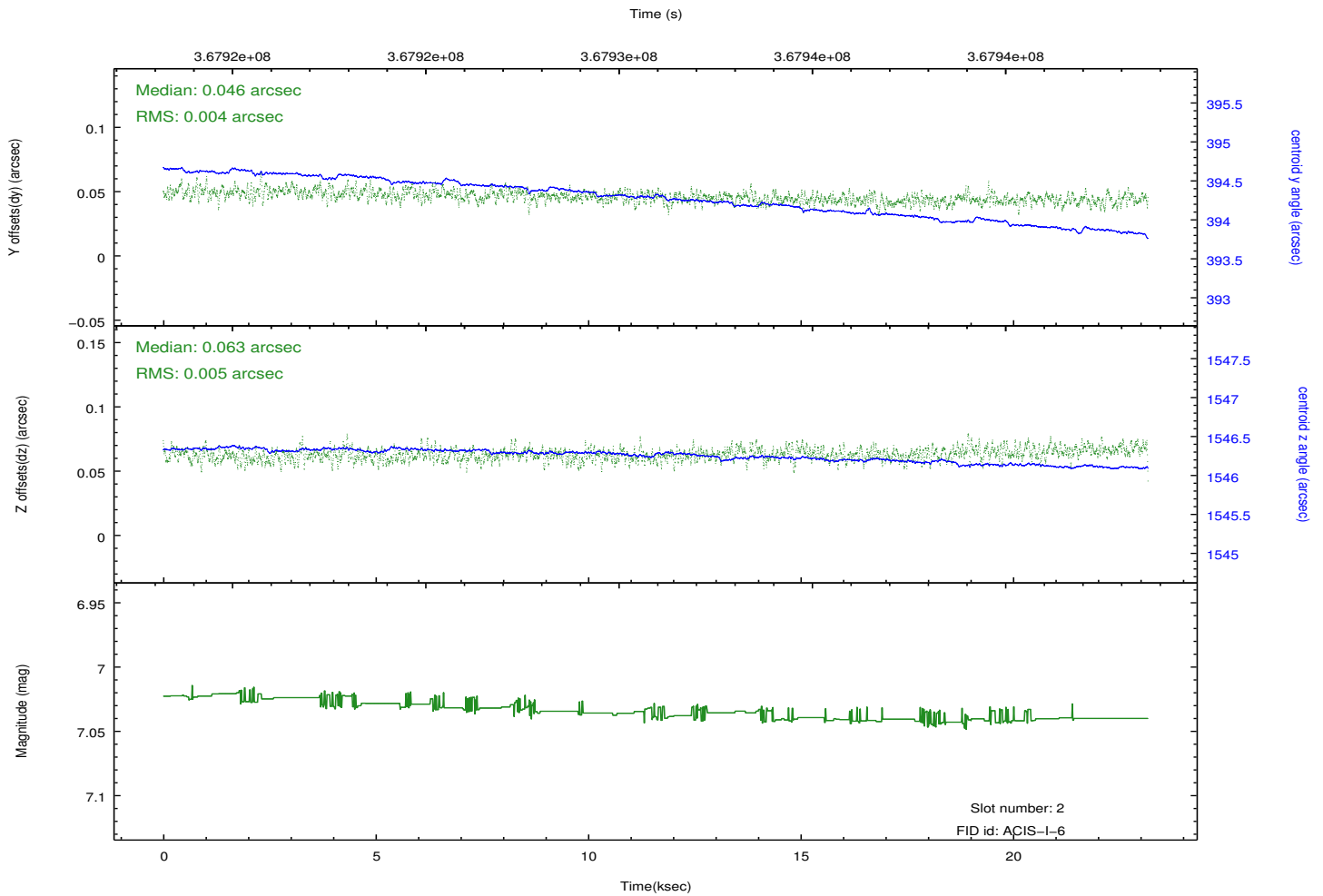
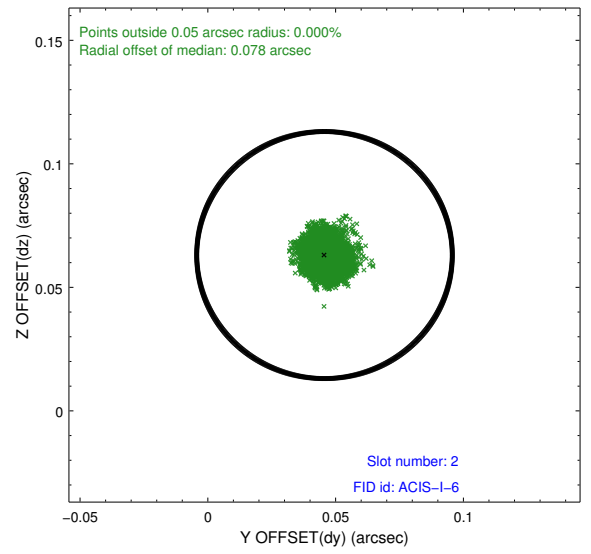
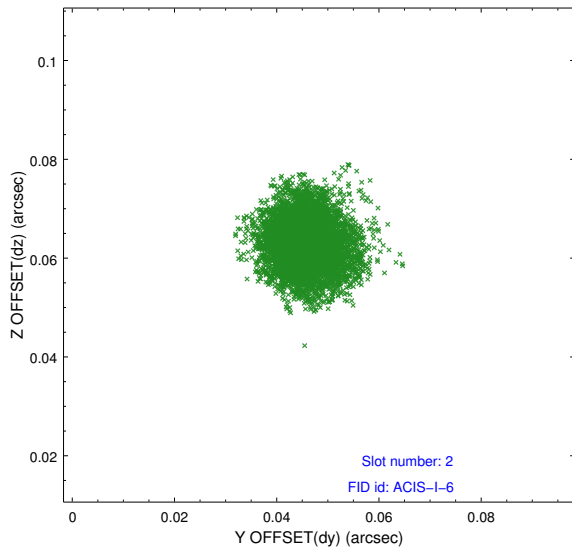
2.5.1 Slot 0



2.5.2 Slot 1



2.5.3 Slot 2



A Summary

A.1 Status

V&V Scientist	Jen Lauer
V&V Date (YYYY-MM-DD)	2012.06.15
V&V Edition	1
V&V Disposition and Status	OK
V&V Charge Time	22.766359174788

A.2 Comments